



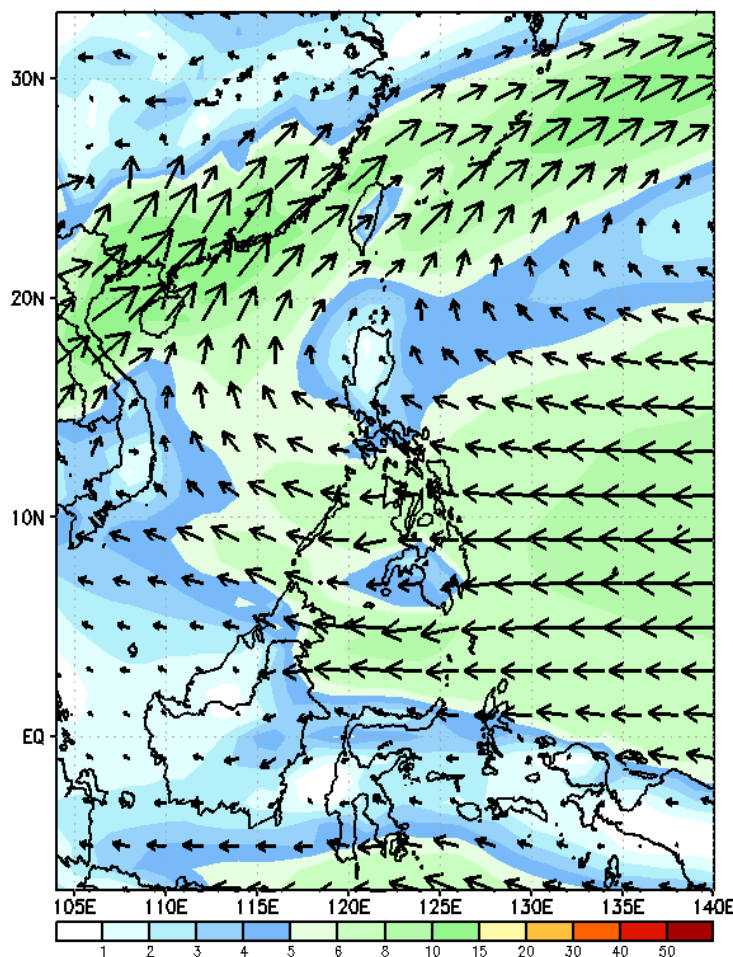
Week 1 & Week 2 Forecast for the Philippines using GEFS Model



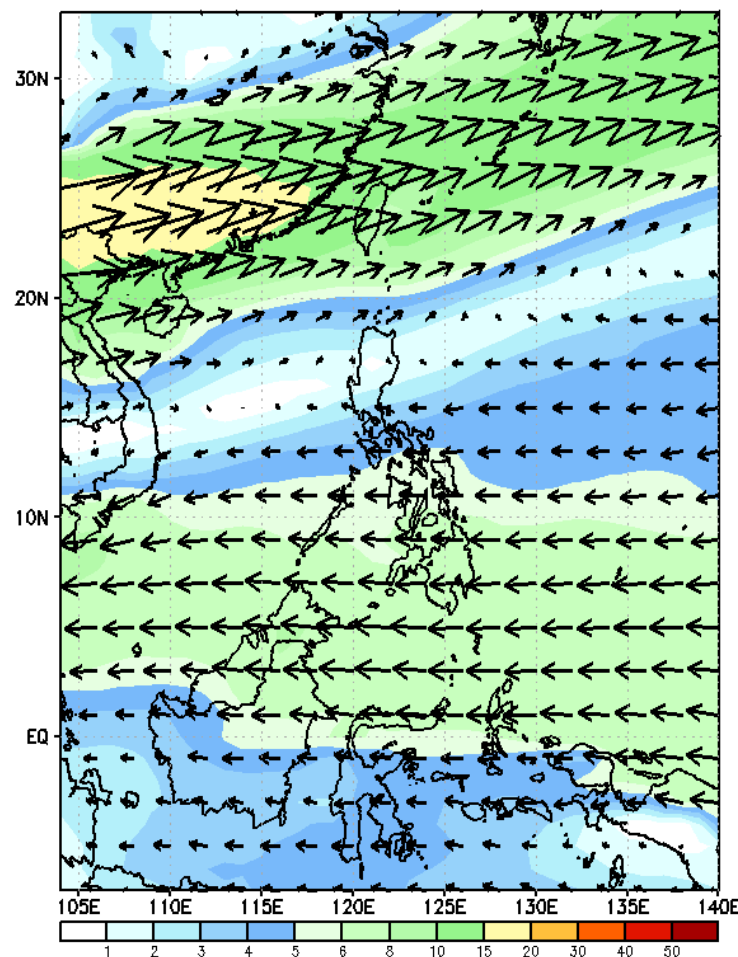
GEFS Week-1 Wind Forecasts:

Week 1: April 24-30, 2024

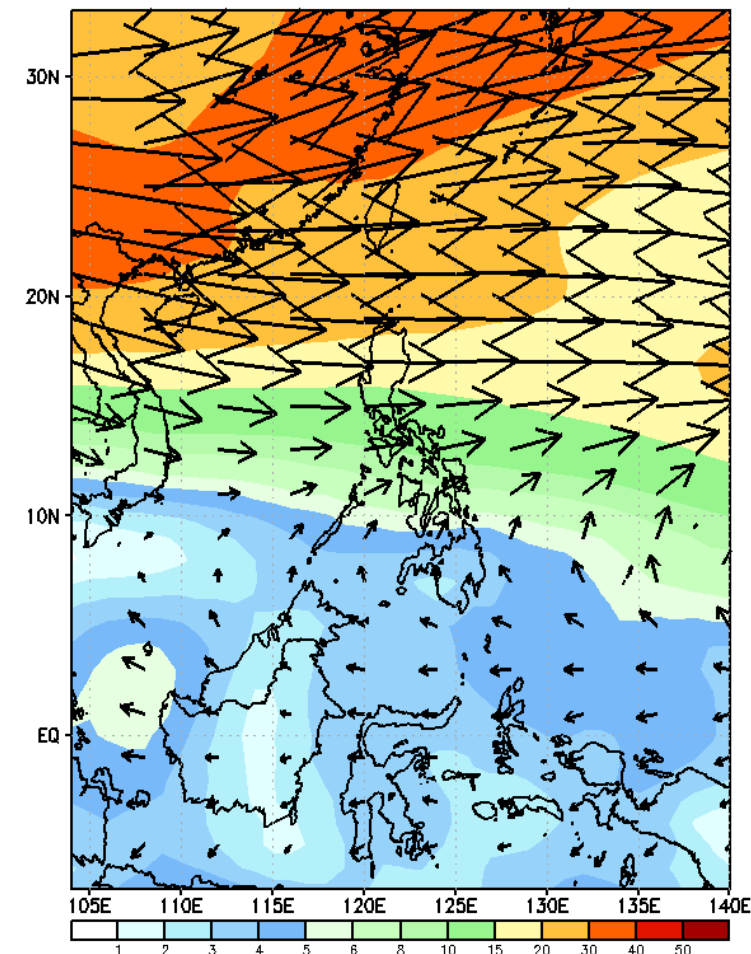
GEFS Week-1 850-hPa Wind Total
Valid: 20240424 - 20240430



GEFS Week-1 700-hPa Wind Total
Valid: 20240424 - 20240430



GEFS Week-1 200-hPa Wind Total
Valid: 20240424 - 20240430



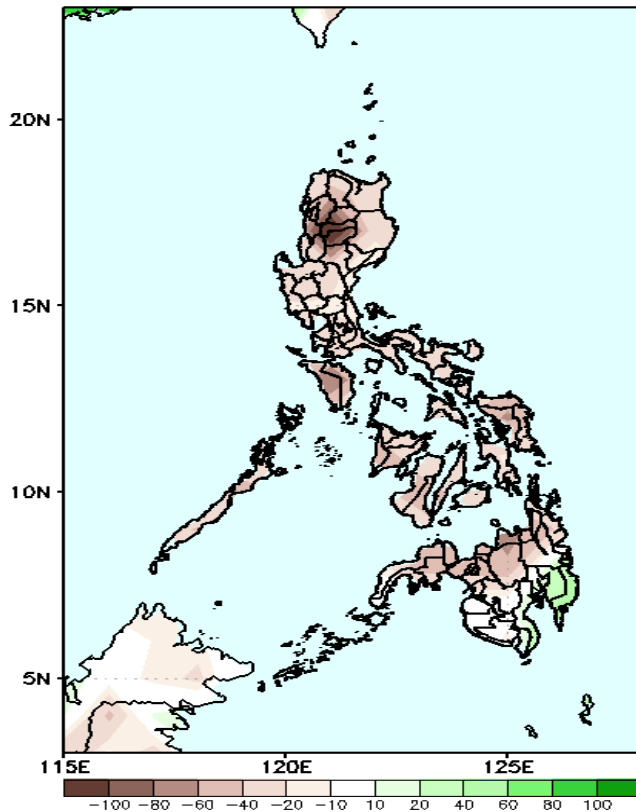
Easterlies continuously affect most parts of the country. Expect dry and warm days during the forecast period.

Precipitation Anomaly and Exceedance Probability > 25/50 mm



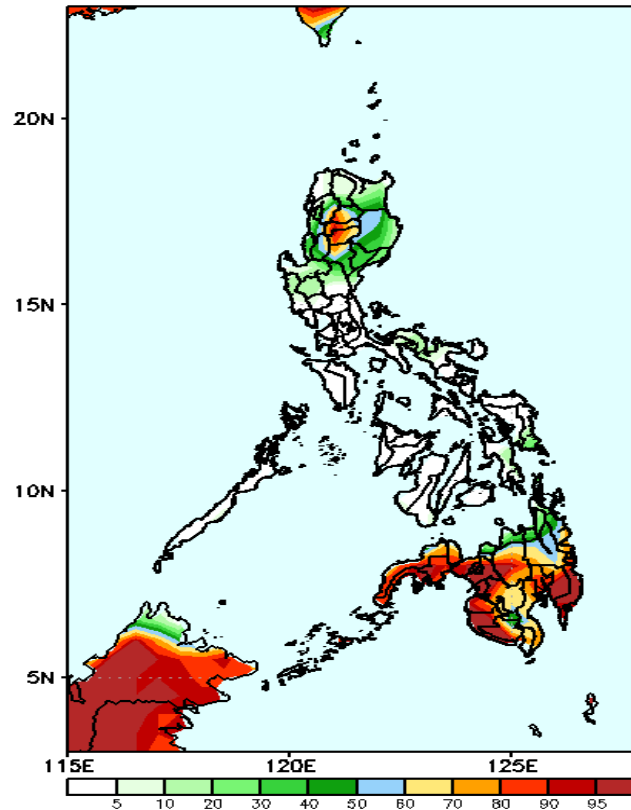
Week 1: April 24-30, 2024

GEFS Week-1 Precip Anomaly
Valid: 20240424 - 20240430



Rainfall deficit of 40-80mm in CAR; 20-60mm in most parts of the country while an increase of 20-40mm of rainfall will be likely over most of Davao Region.

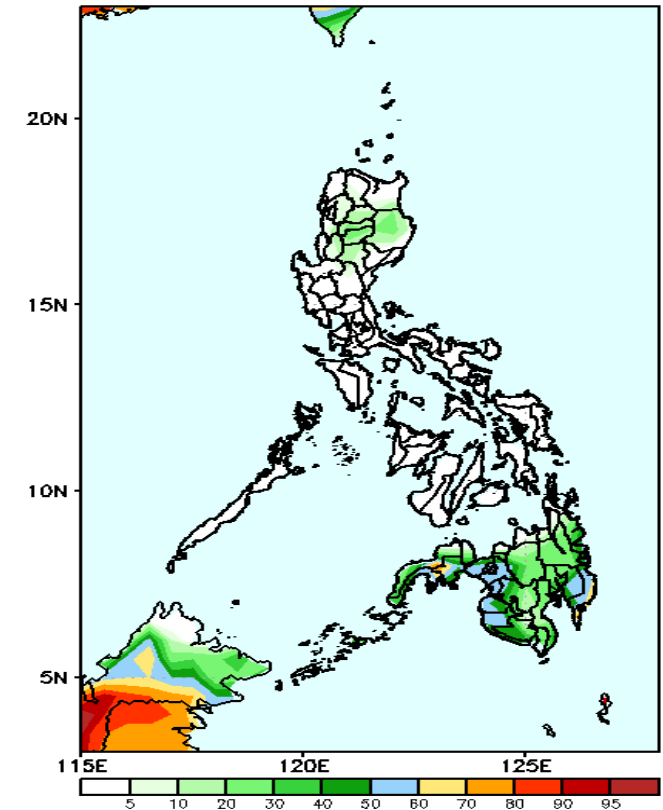
GEFS Week-1 Exceedance Prob. > 25mm
Valid: 20240424 - 20240430



Probability to Exceed 25mm

- High to very high over Western Mindanao, Davao de Oro and Davao Oriental;
- Moderate to high over most of CAR, Nueva Vizcaya and the rest of Mindanao;
- Low to moderate over the rest of Luzon;
- Low over Visayas.

GEFS Week-1 Exceedance Prob. > 50mm
Valid: 20240424 - 20240430

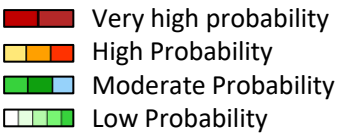


Probability to Exceed 50mm

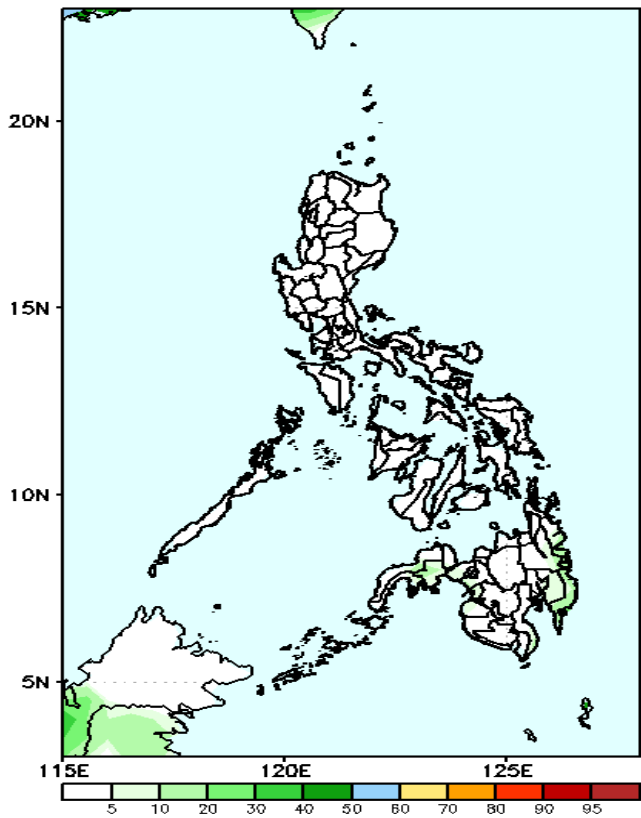
- Moderate to high over some parts of Zamboanga peninsula;
- Low to moderate over the rest of Mindanao;
- Low over the rest of the country.

Exceedance Probability > 100/150/200 mm

Week 1: April 24-30, 2024



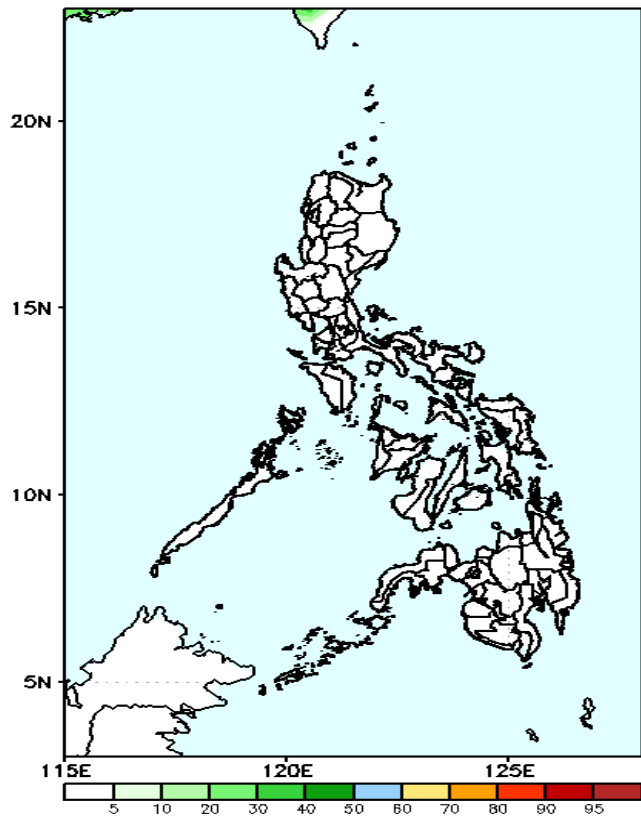
GEFS Week-1 Exceedance Prob. > 100mm
Valid: 20240424 – 20240430



Probability to Exceed 100mm

- Low across the country.

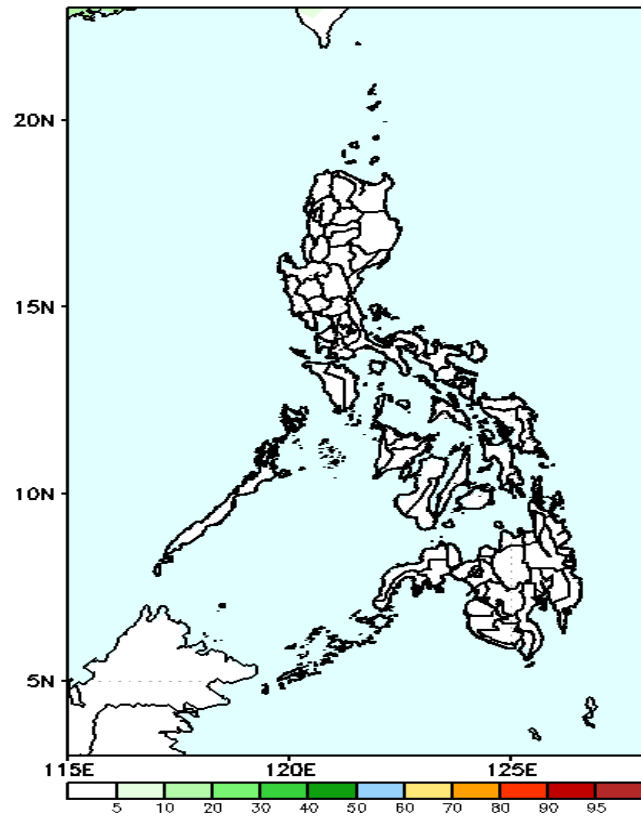
GEFS Week-1 Exceedance Prob. > 150mm
Valid: 20240424 – 20240430



Probability to Exceed 150mm

- Low across the country.

GEFS Week-1 Exceedance Prob. > 200mm
Valid: 20240424 – 20240430



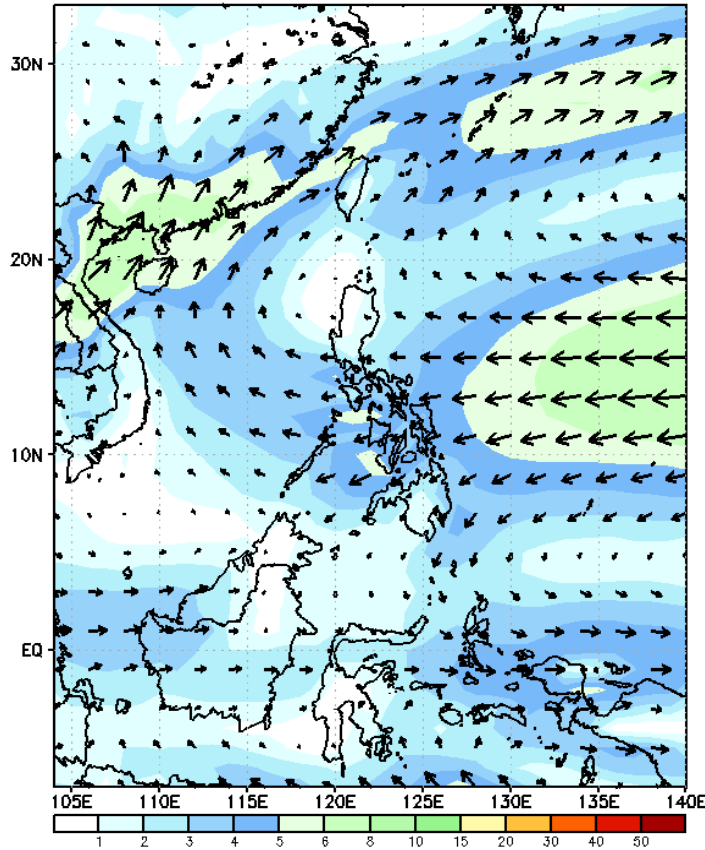
Probability to Exceed 200mm

- Low across the country.

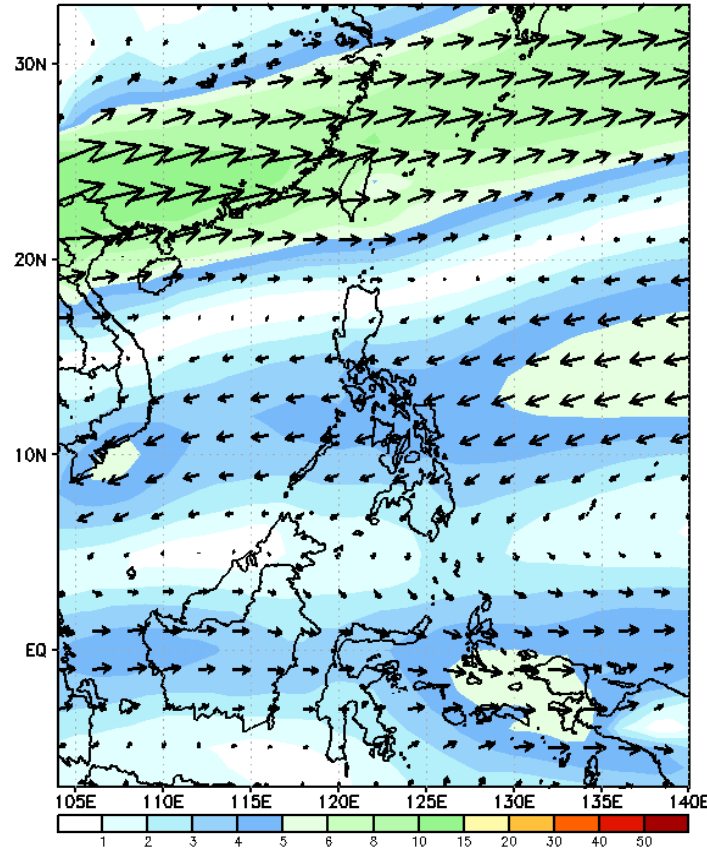
GEFS Week-2 Wind Forecasts:

Week 2: May 01-07, 2024

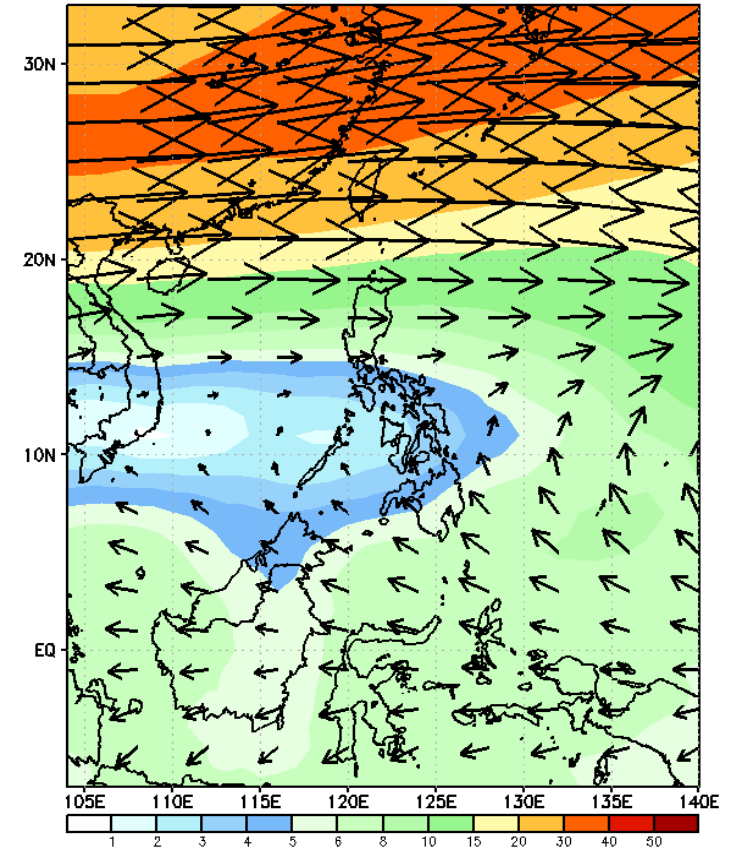
GEFS Week-2 850-hPa Wind Total
Valid: 20240501 - 20240507



GEFS Week-2 700-hPa Wind Total
Valid: 20240501 - 20240507



GEFS Week-2 200-hPa Wind Total
Valid: 20240501 - 20240507



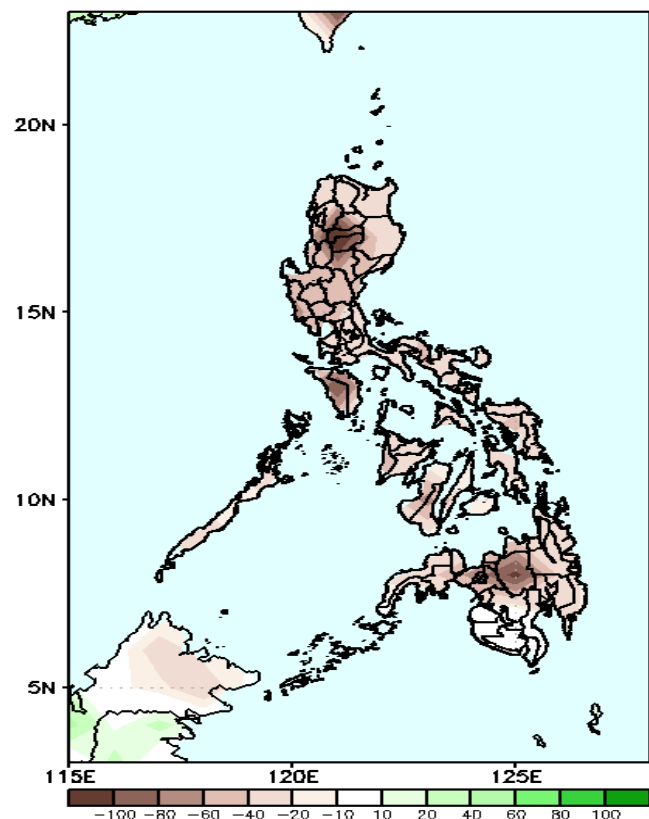
Easterlies will likely prevail in most parts of the country. Expect dry and warm days during the forecast period.

Precipitation Anomaly and Exceedance Probability > 25/50 mm



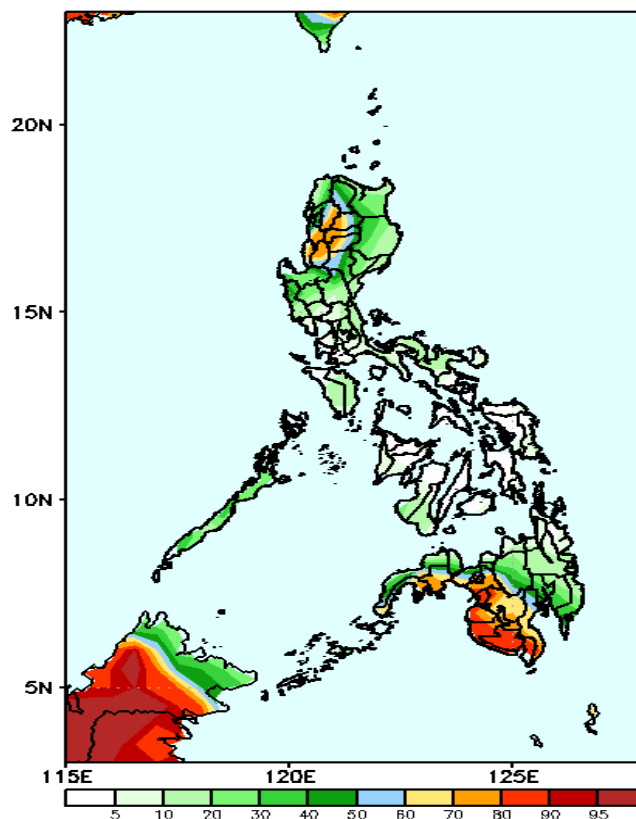
Week 2: May 01-07, 2024

GEFS Week-2 Precip Anomaly
Valid: 20240501 - 20240507



Rainfall deficit of 40-80mm in CAR and 20-60mm in most parts of the country.

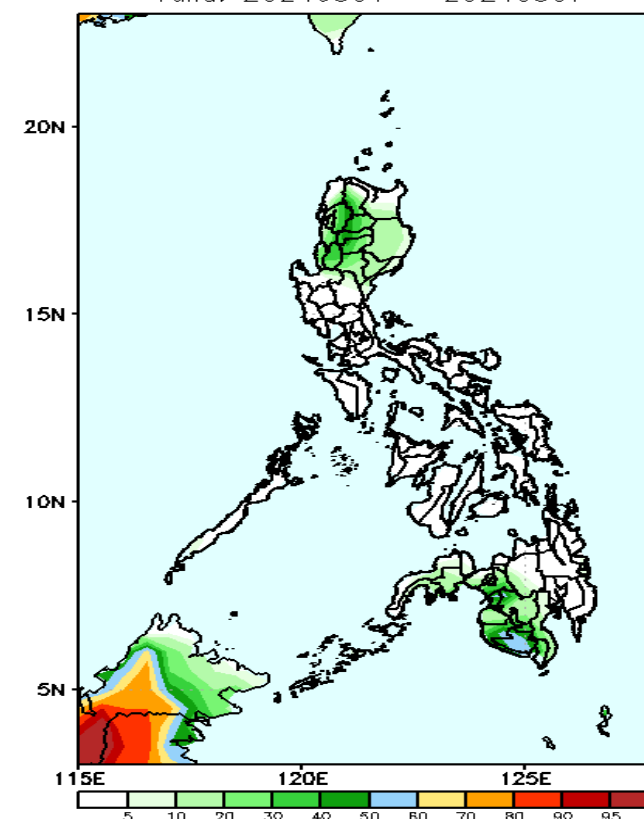
GEFS Week-2 Exceedance Prob. > 25mm
Valid: 20240501 - 20240507



Probability to Exceed 25mm

- Moderate to high over most of Northern Luzon and Mindanao;
- Low to moderate over the rest of the country.

GEFS Week-2 Exceedance Prob. > 50mm
Valid: 20240501 - 20240507



Probability to Exceed 50mm

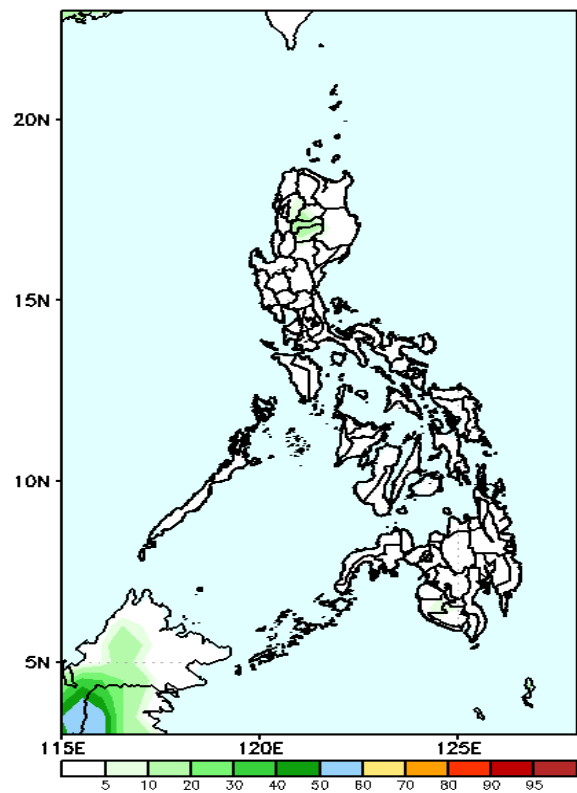
- Low to moderate over some parts of CAR and southwestern Mindanao;
- Low over the rest of the country.

Exceedance Probability > 100/150/200 mm

Week 2: May 01-07, 2024

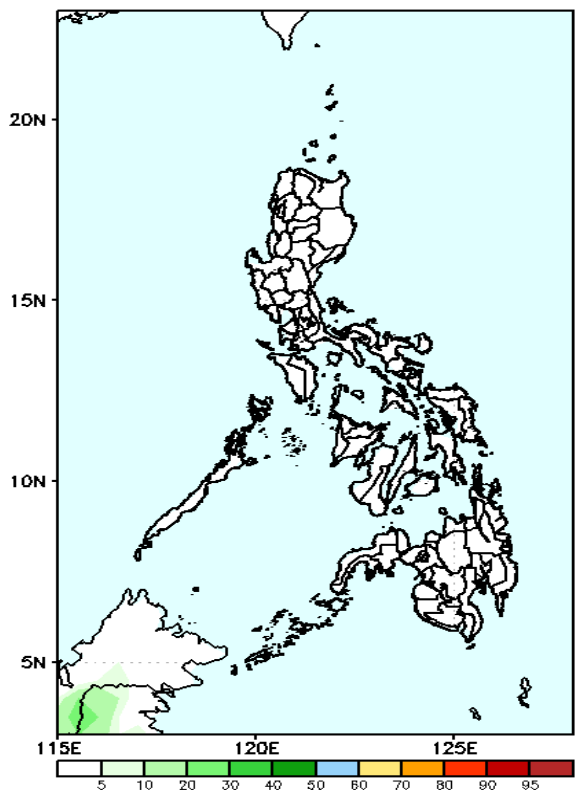
- Very high probability
- High Probability
- Moderate Probability
- Low Probability

GEFS Week-2 Exceedance Prob. > 100mm
Valid: 20240501 – 20240507



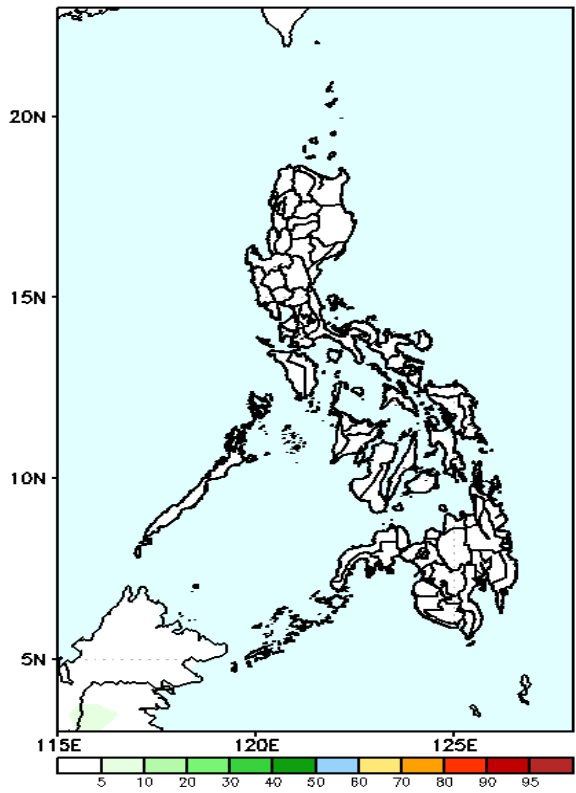
Probability to Exceed 100mm
• Low across the country.

GEFS Week-2 Exceedance Prob. > 150mm
Valid: 20240501 – 20240507



Probability to Exceed 150mm
• Low across the country.

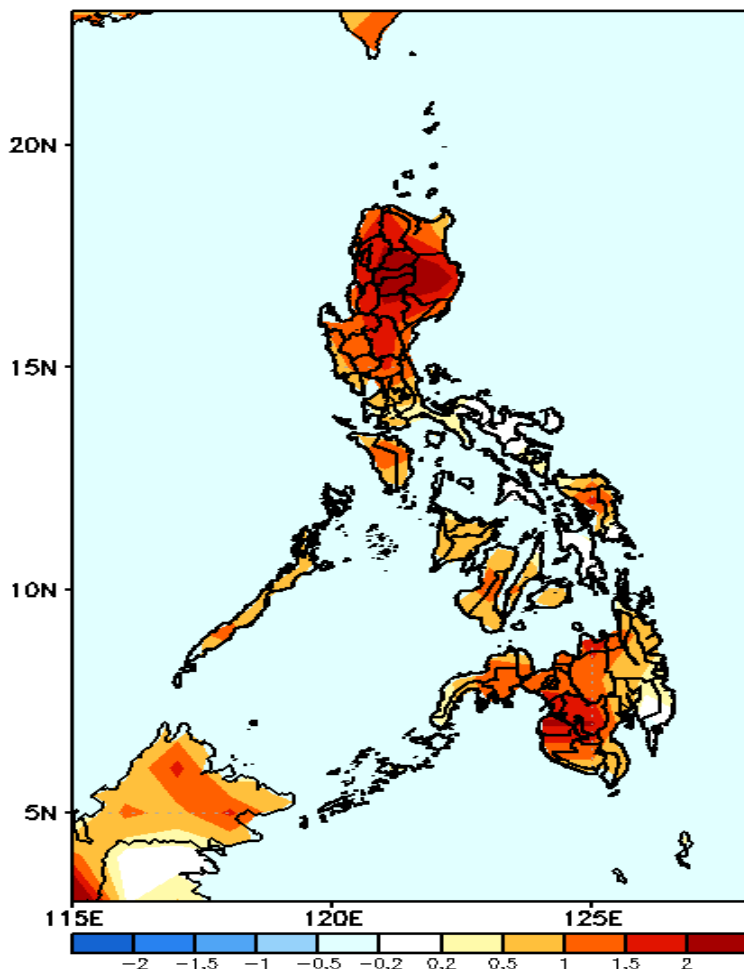
GEFS Week-2 Exceedance Prob. > 200mm
Valid: 20240501 – 20240507



Probability to Exceed 200mm
• Low across the country.

GEFS Week-1 & 2 Forecasts: T2m Anomaly

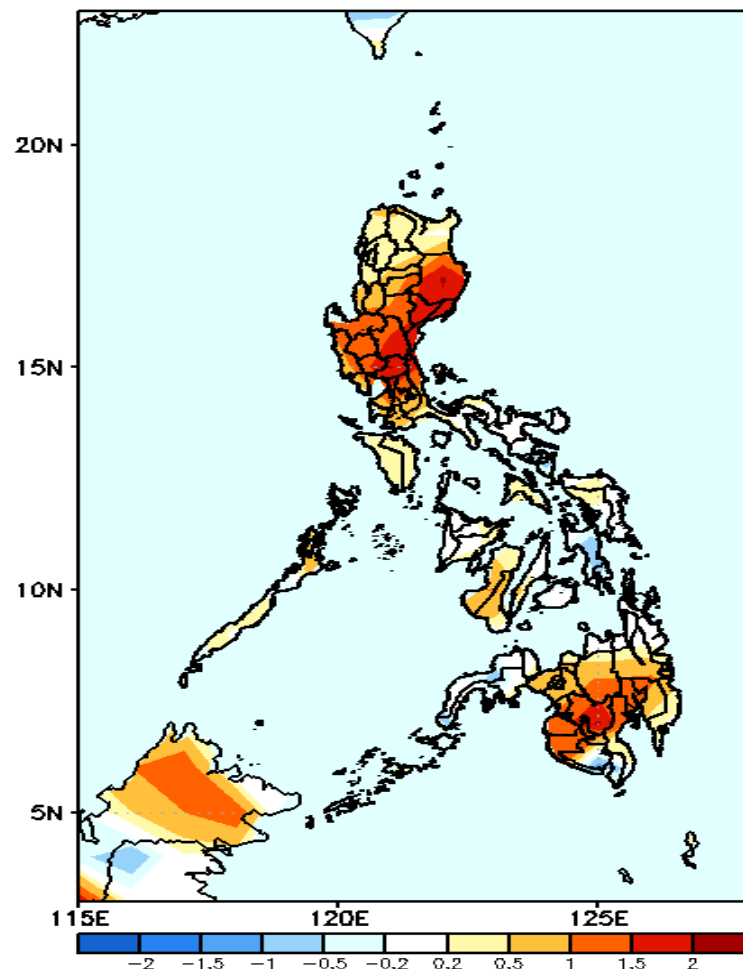
GEFS Week-1 T2m Anomaly
Valid: 20240424 – 20240430



2m Temperature Week 1: April 24-30, 2024

Slightly warmer to warmer than average surface air temperature will likely be experienced in most parts of the country.

GEFS Week-2 T2m Anomaly
Valid: 20240501 – 20240507



2m Temperature Week 2: May 01-07, 2024

Slightly warmer to warmer than average surface air temperature will likely be experienced in most parts of the country except Leyte provinces and Zamboanga Peninsula were near to slightly cooler than average surface air temperature is likely.