



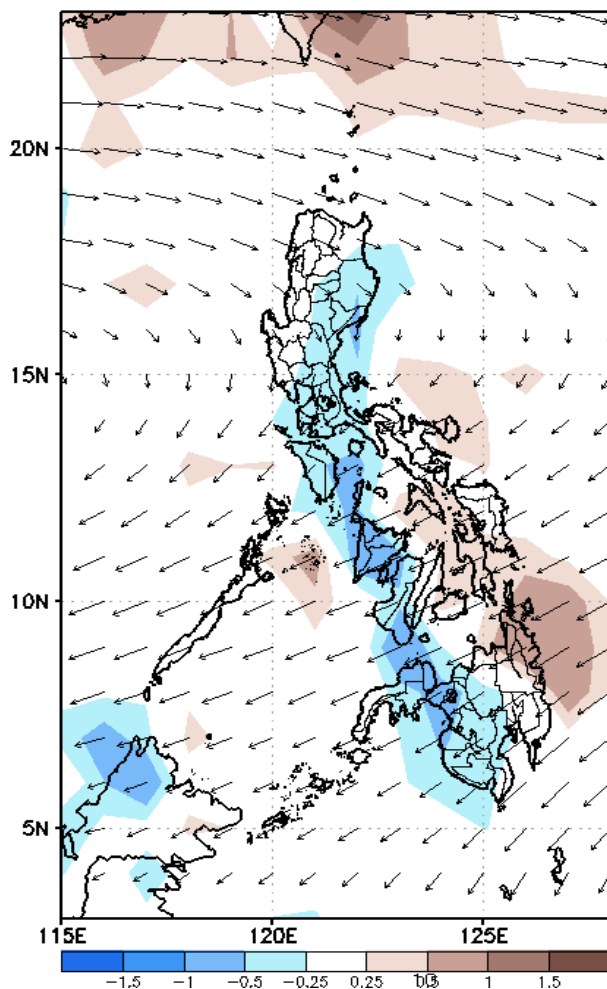
Week 1 & Week 2 Forecast for the Philippines using GEFS Model



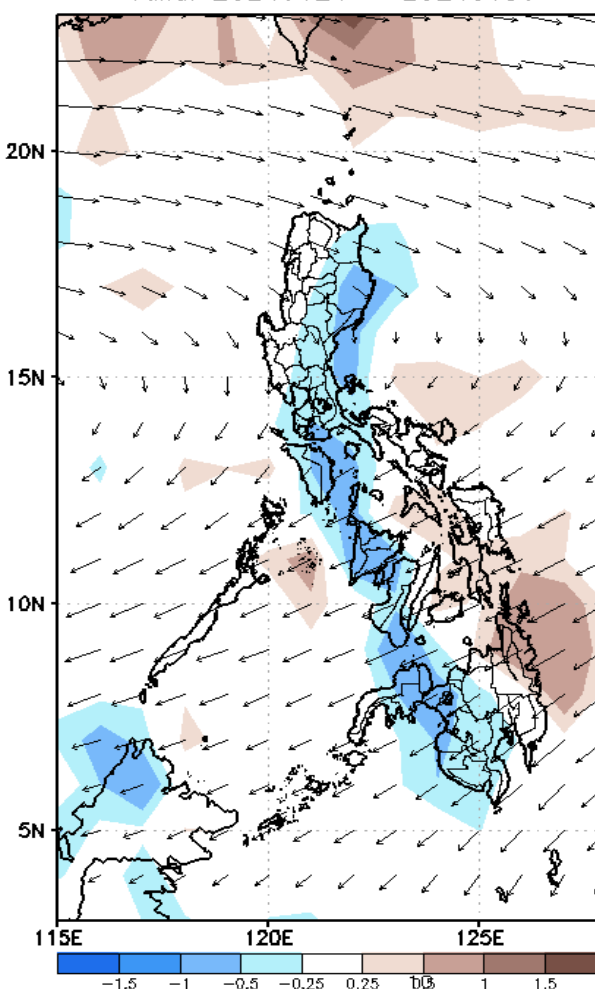
GEFS Week-1 Forecasts: Wind Forecast

Week 1: January 2-28, 2024

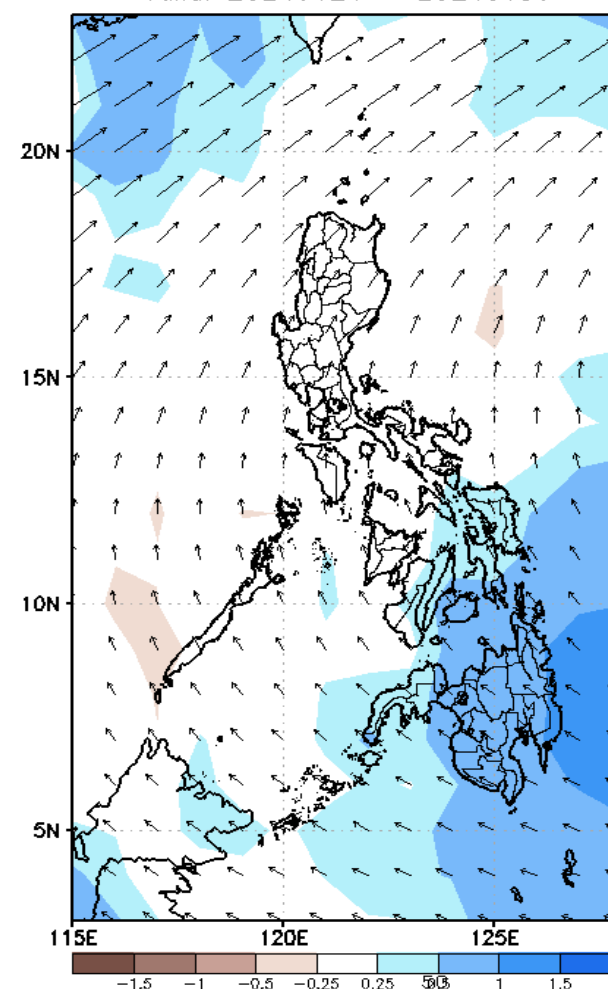
GEFS Week-1 850-hPa Divergence and Wind Anomaly
Valid: 20240124 - 20240130



GEFS Week-1 700-hPa Divergence and Wind Anomaly
Valid: 20240124 - 20240130



GEFS Week-1 200-hPa Divergence and Wind Anomaly
Valid: 20240124 - 20240130



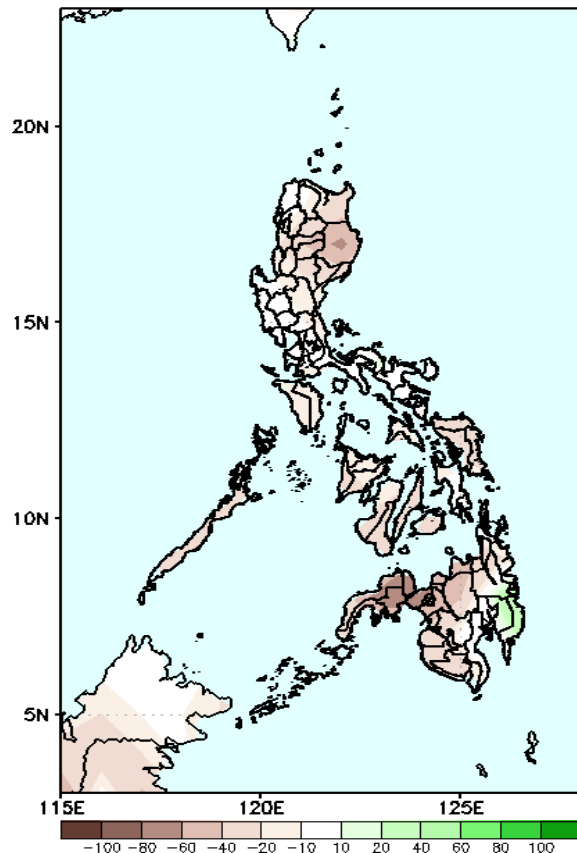
Northeast Monsoon will likely affect eastern sections of Luzon and Visayas, Easterlies affecting Mindanao.

Precipitation Anomaly and Exceedance Probability > 25/50 mm



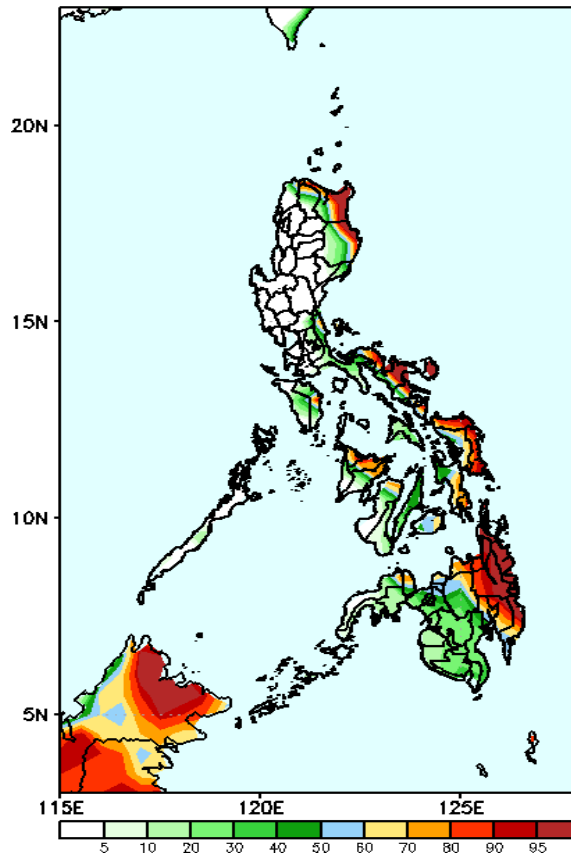
Week 1: January 22-28, 2024

GEFS Week-1 Precip Anomaly
Valid: 20240124 - 20240130



Rainfall deficit of 40-80mm in most parts of the country except in Davao de Oro and Davao Oriental where an increase of 20-40mm of rainfall is likely.

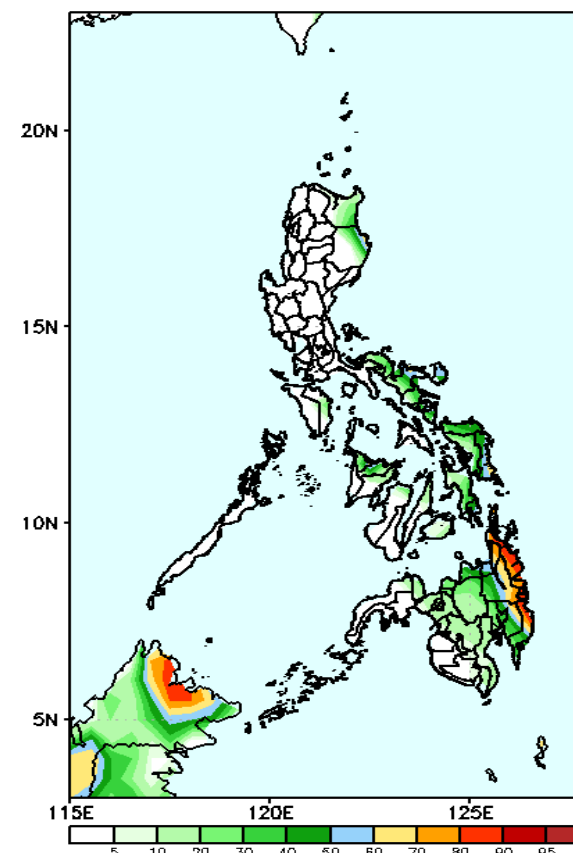
GEFS Week-1 Exceedance Prob. > 25mm
Valid: 20240124 - 20240130



Probability to Exceed 25mm

- High to very high over the eastern portions of Cagayan and Isabela, some parts of the Bicol Region, Northern and Eastern Samar, Caraga, and the eastern part of the Davao Region ;
- Moderate to high over the rest of Cagayan, Isabela, and Bicol region, Quezon, Oriental Mindoro, the rest of Visayas, and most parts of Mindanao;
- Low to moderate over the rest of the country.

GEFS Week-1 Exceedance Prob. > 50mm
Valid: 20240124 - 20240130

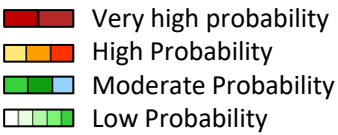


Probability to Exceed 50 mm

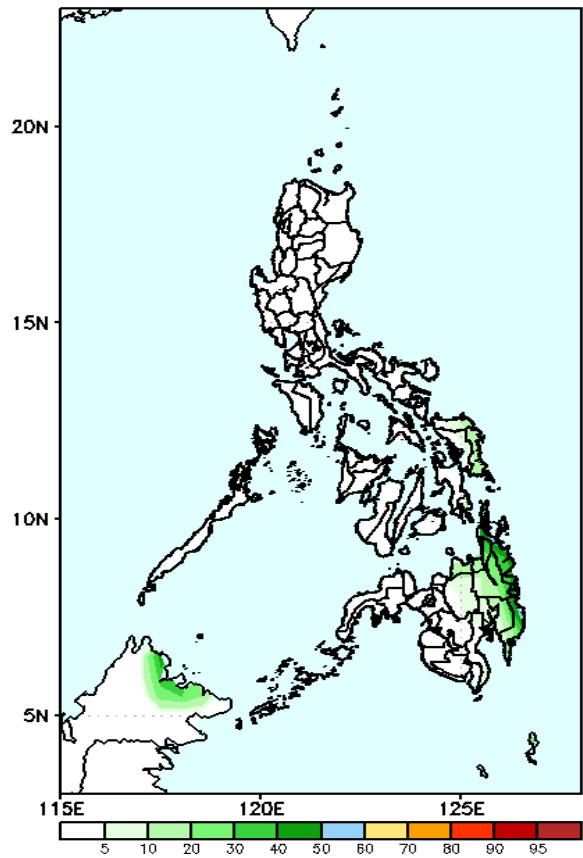
- Moderate to high over the eastern part of Isabela, Eastern Samar and eastern Mindanao;
- Low to moderate over the Bicol Region, Aklan, Capiz, and Northern Samar;
- Low over the rest of the country.

Exceedance Probability > 100/150/200 mm

Week 1: January 22-28, 2024

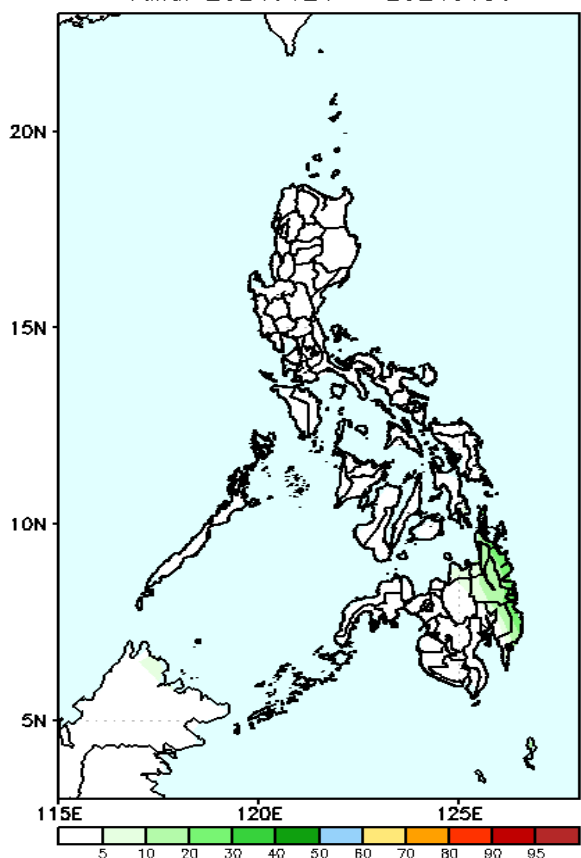


GEFS Week-1 Exceedance Prob. > 100mm
Valid: 20240124 – 20240130



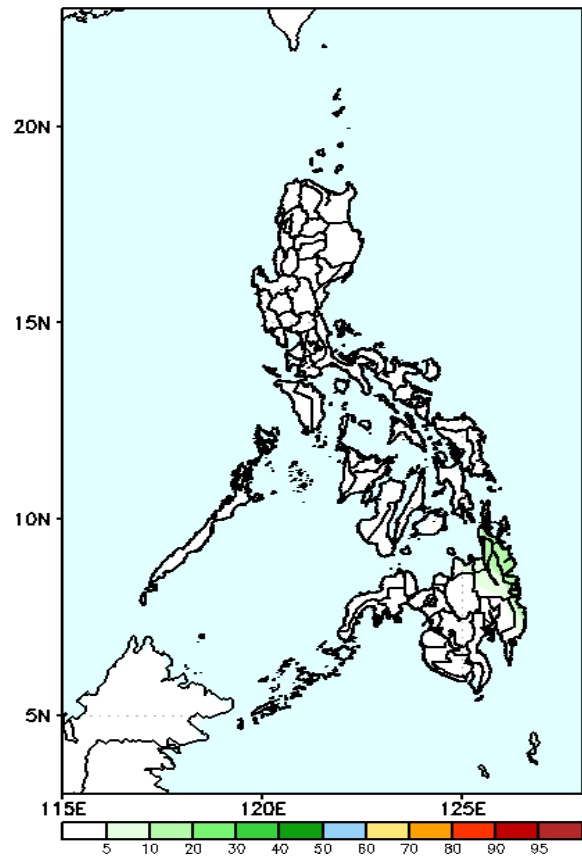
- Probability to Exceed 100mm**
- Low to moderate over eastern Mindanao;
 - Low over the rest of the country.

GEFS Week-1 Exceedance Prob. > 150mm
Valid: 20240124 – 20240130



- Probability to Exceed 150mm**
- Low across the country.

GEFS Week-1 Exceedance Prob. > 200mm
Valid: 20240124 – 20240130

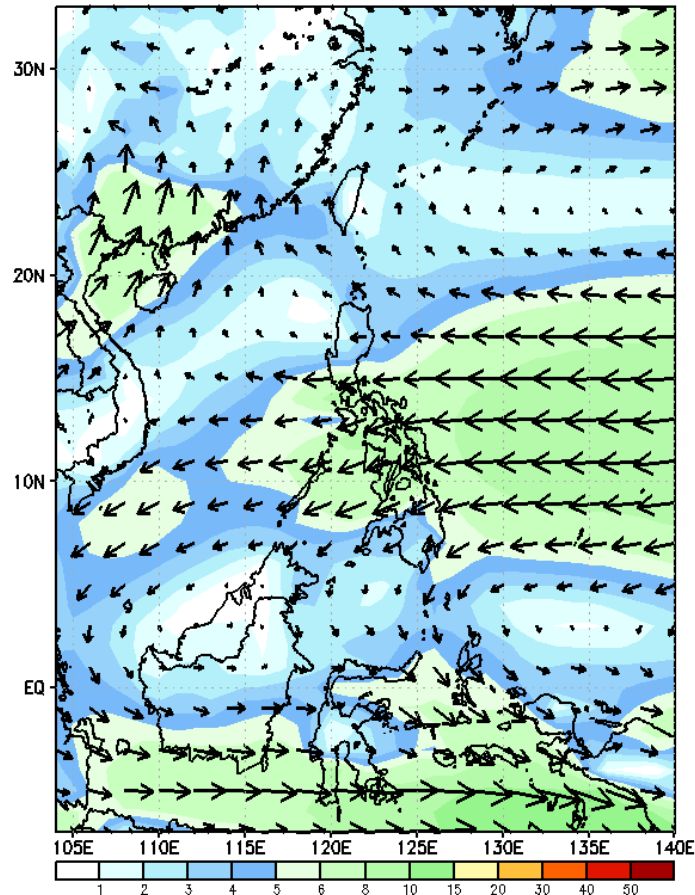


- Probability to Exceed 200mm**
- Low across the country.

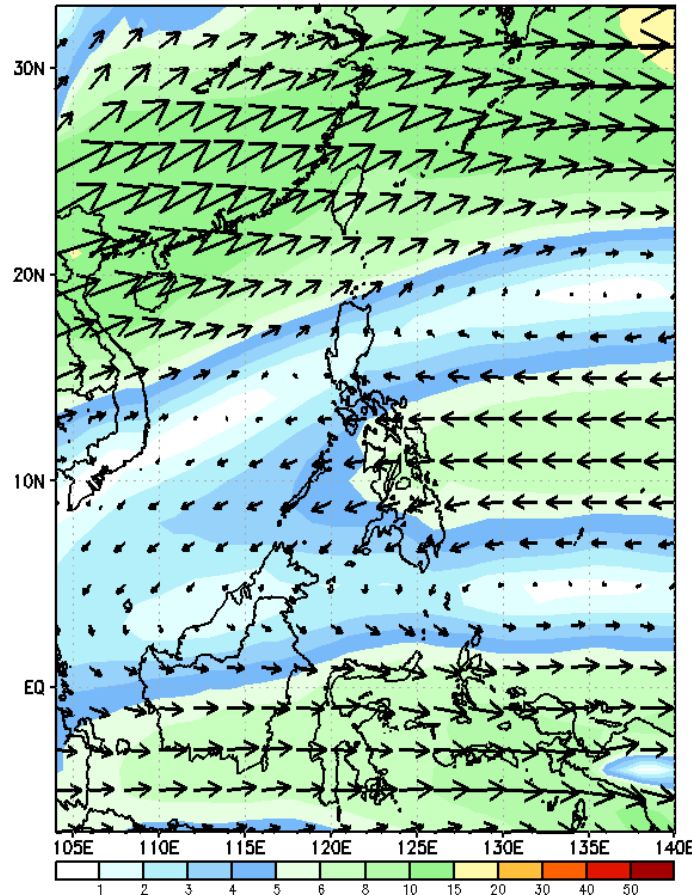
GEFS Week-2 Forecasts: Wind Forecast

Week 2: January 29- February 04, 2024

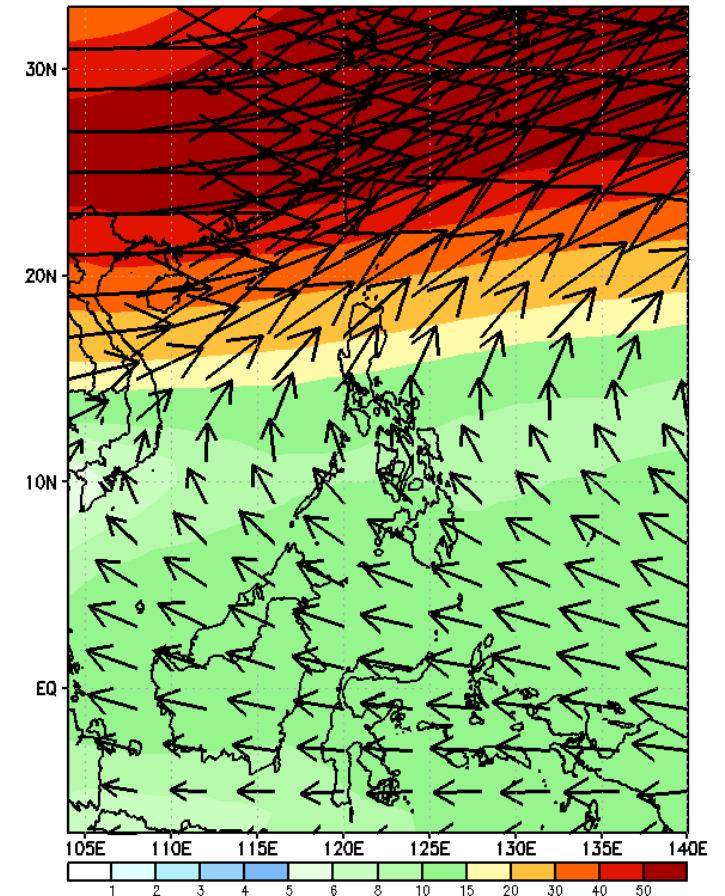
GEFS Week-2 850-hPa Wind Total
Valid: 20240131 - 20240206



GEFS Week-2 700-hPa Wind Total
Valid: 20240131 - 20240206



GEFS Week-2 200-hPa Wind Total
Valid: 20240131 - 20240206



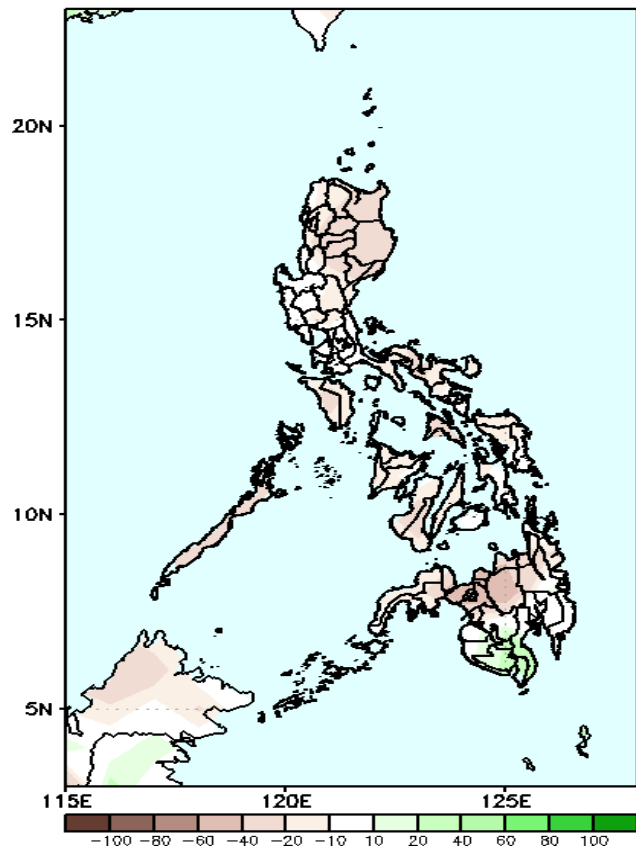
Northeast Monsoon affecting Extreme Northern Luzon; Easterlies affecting the rest of the country.

Precipitation Anomaly and Exceedance Probability > 25/50 mm



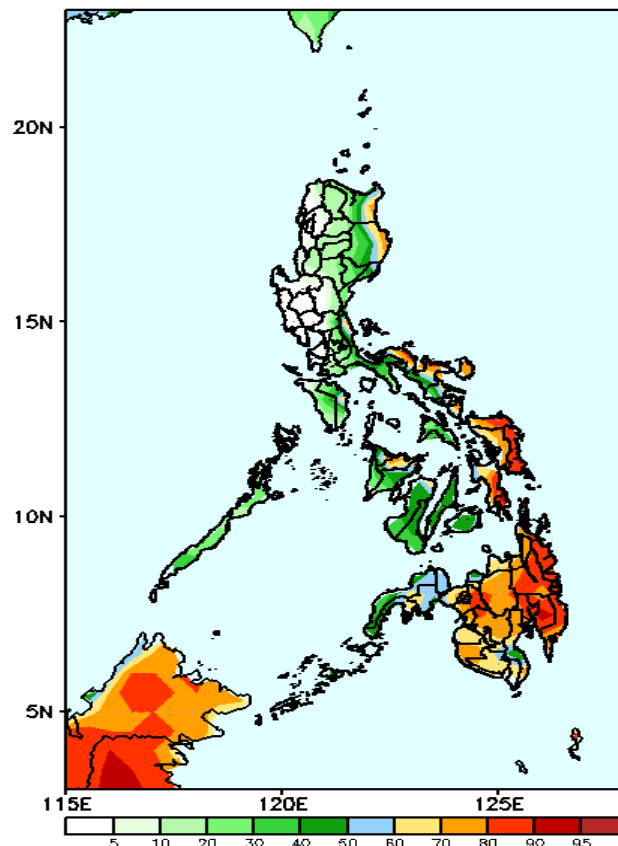
Week 2: January 29- February 04, 2024

GEFS Week-2 Precip. Anomaly
Valid: 20240131 - 20240206



Rainfall deficit of 40-60mm in most parts of the country except Davao Occidental, Sarangani and South Cotabato where an increase of 20-40mm of rainfall is likely.

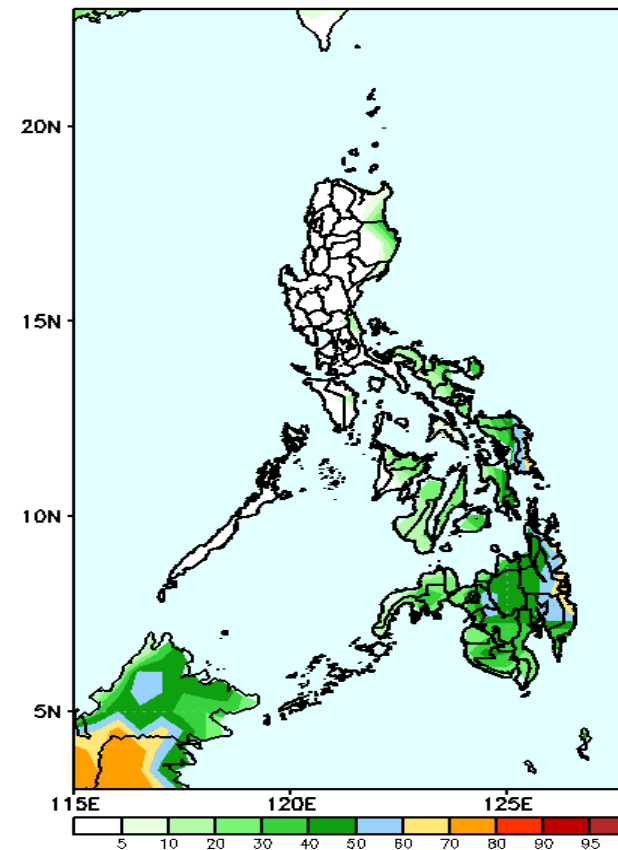
GEFS Week-2 Exceedance Prob. > 25mm
Valid: 20240131 - 20240206



Probability to Exceed 25mm

- High to very high over Davao de Oro;
- Moderate to high over Cagayan, Isabela, Quezon, Bicol Region, Mindoro Oriental, and most of Visayas and Mindanao;
- Low to moderate over the rest of the country.

GEFS Week-2 Exceedance Prob. > 50mm
Valid: 20240131 - 20240206

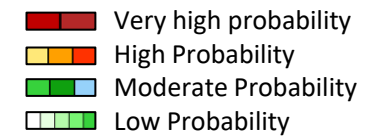


Probability to Exceed 50mm

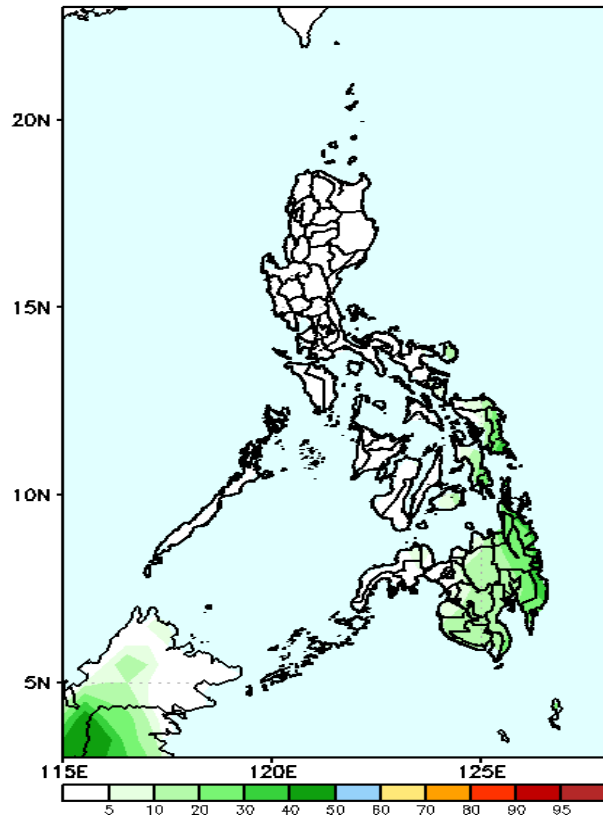
- Moderate to high over most of Eastern Visayas and eastern Mindanao;
- Low to moderate over the rest of Mindanao;
- Low elsewhere.

Exceedance Probability > 100/150/200 mm

Week 2: January 29- February 04, 2024



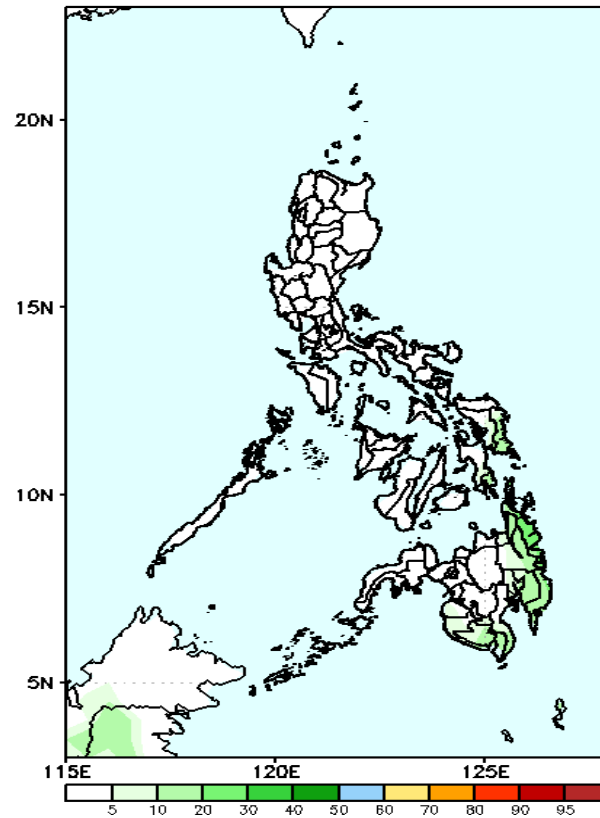
GEFS Week-2 Exceedance Prob. > 100mm
Valid: 20240131 - 20240206



Probability to Exceed 100mm

- Low to moderate over eastern Mindanao;
- Low elsewhere.

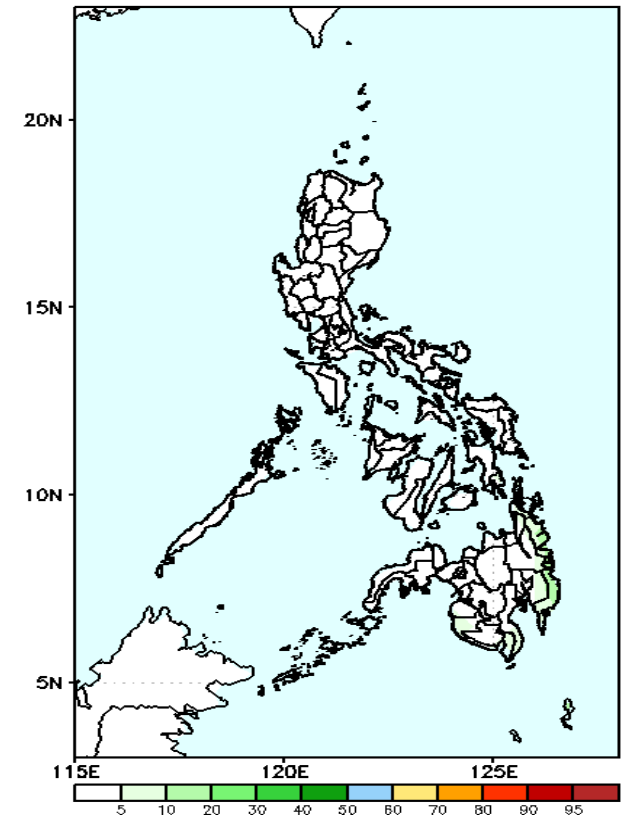
GEFS Week-2 Exceedance Prob. > 150mm
Valid: 20240131 - 20240206



Probability to Exceed 150mm

- Low across the country.

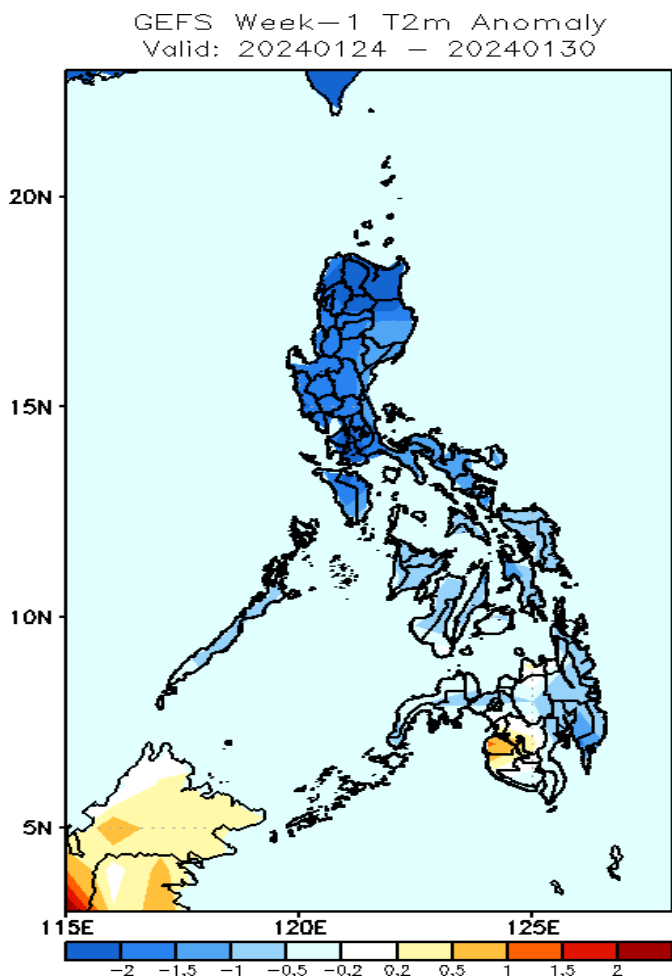
GEFS Week-2 Exceedance Prob. > 200mm
Valid: 20240131 - 20240206



Probability to Exceed 200mm

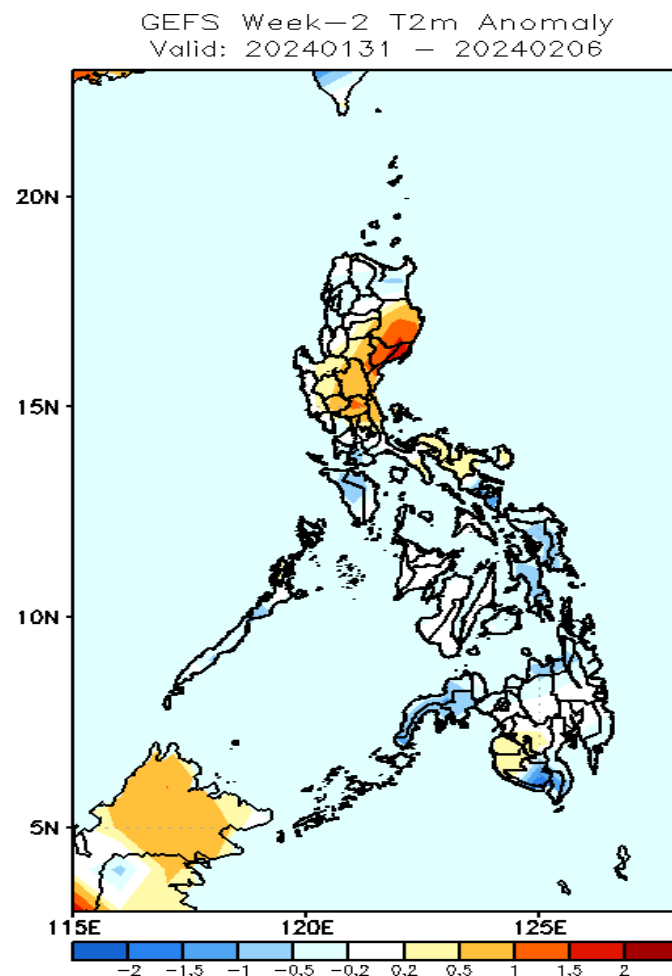
- Low across the country.

GEFS Week-1 & 2 Forecasts: T2m Anomaly



2m Temperature Week 1: January 24-30, 2024

Near to cooler than average surface air temperature average will likely be experienced in most parts country except in Maguindanao and Sultan Kudarat where slightly warmer than average temperature is expected.



2m Temperature Week 2: January 31- February 06, 2024

Near to slightly cooler than average surface air temperature will likely be experienced in most parts of the country except in most areas in eastern Luzon, Maguindanao, and Sultan Kudarat where slightly warmer than average temperature is expected.