



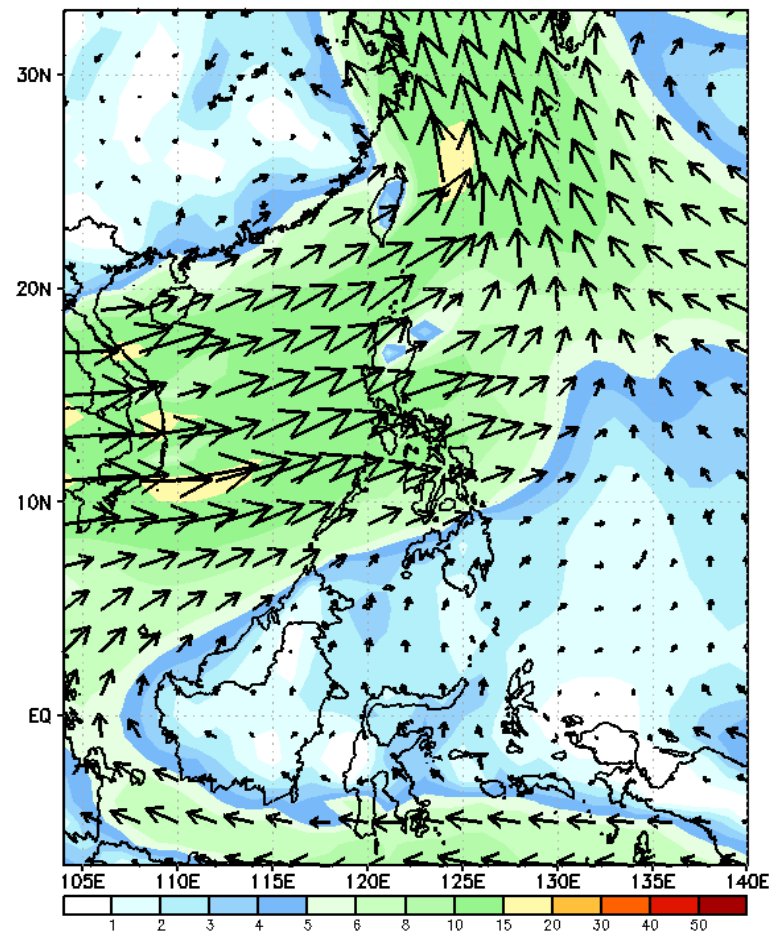
Week 1 & Week 2 Forecast for the Philippines using GEFS Model



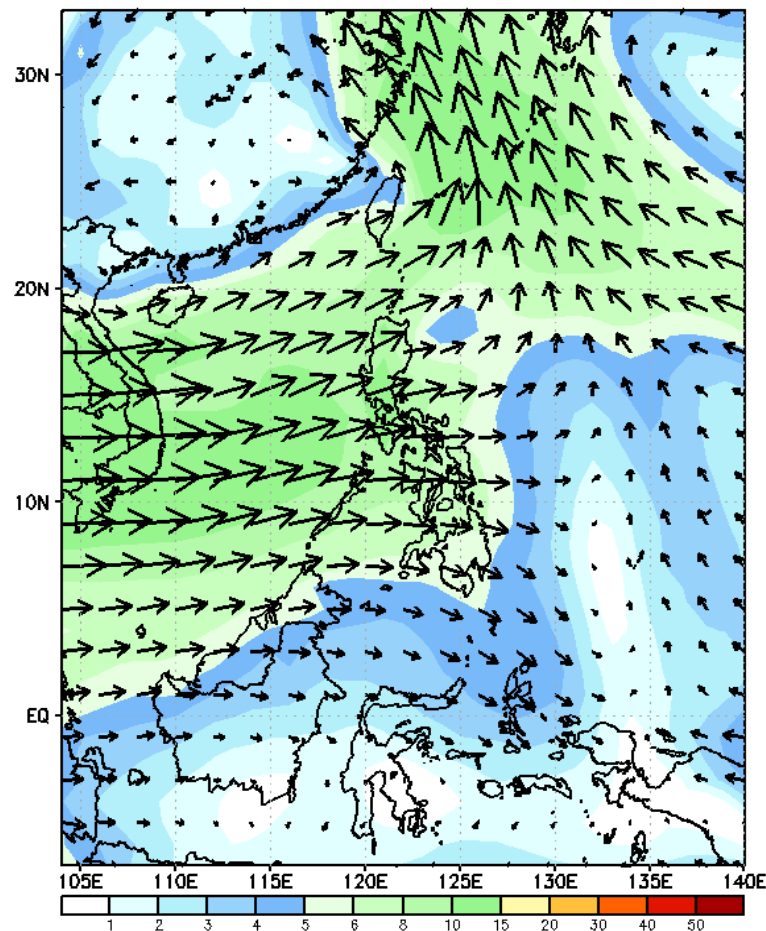
GEFS Week-1 Wind Forecasts:

Week 1: Jul 24-30, 2024

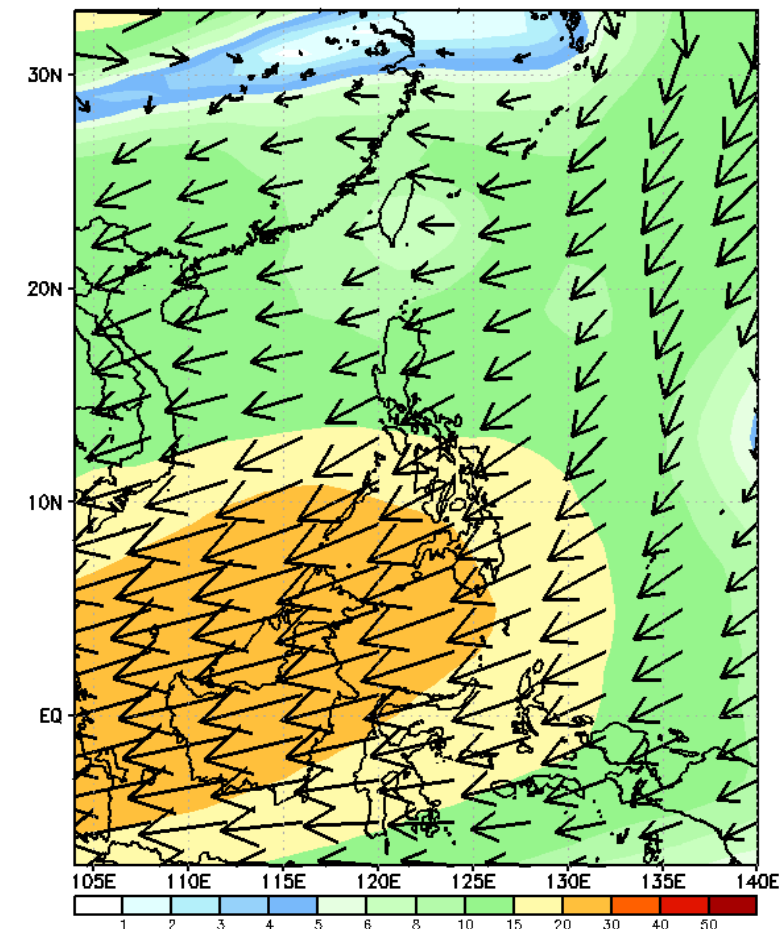
GEFS Week-1 850-hPa Wind Total
Valid: 20240724 - 20240730



GEFS Week-1 700-hPa Wind Total
Valid: 20240724 - 20240730

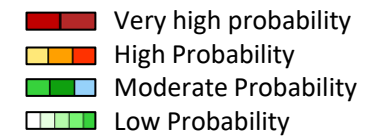


GEFS Week-1 200-hPa Wind Total
Valid: 20240724 - 20240730



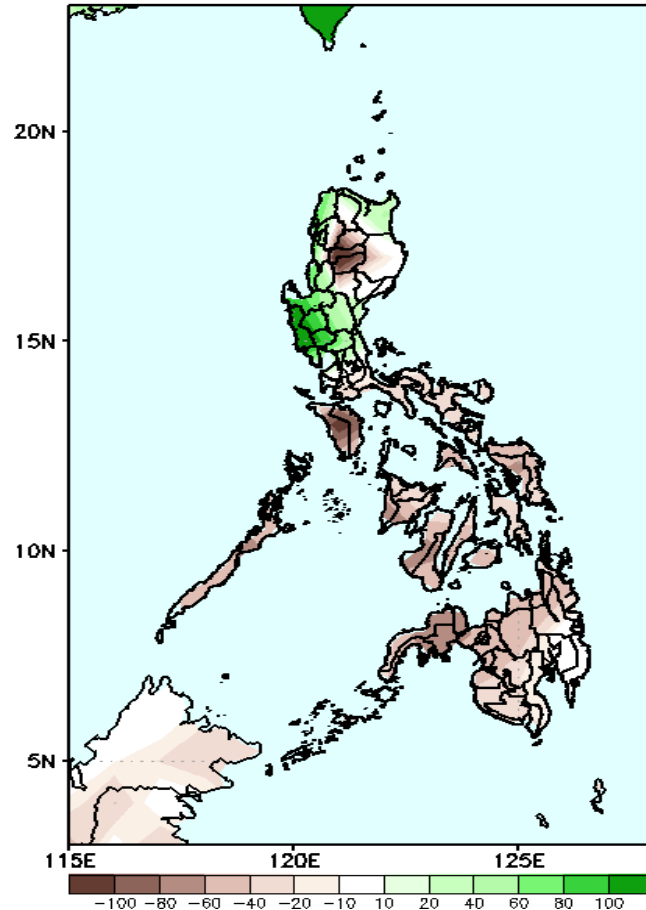
Southwest Monsoon affecting western sections of Luzon and Visayas. Easterlies affecting the rest of the country during the forecast period

Precipitation Anomaly and Exceedance Probability > 25/50 mm



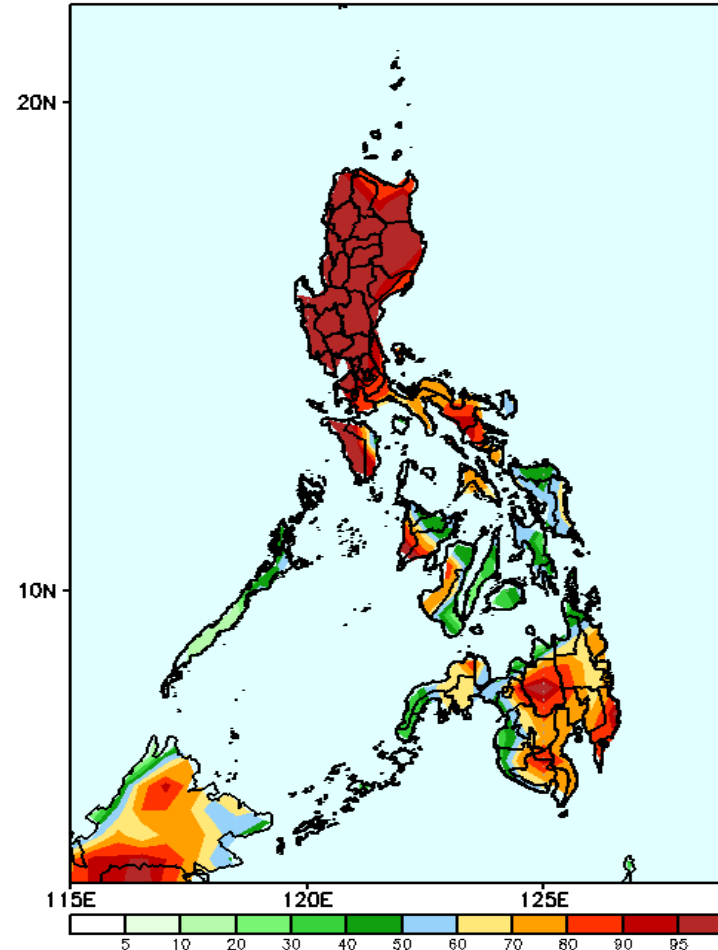
Week 1: Jul 24-30, 2024

GEFS Week-1 Precip Anomaly
Valid: 20240724 - 20240730



60-100mm of rainfall in most parts of Ilocos region, and Central Luzon while 60-80mm deficit of rainfall over the rest of the country.

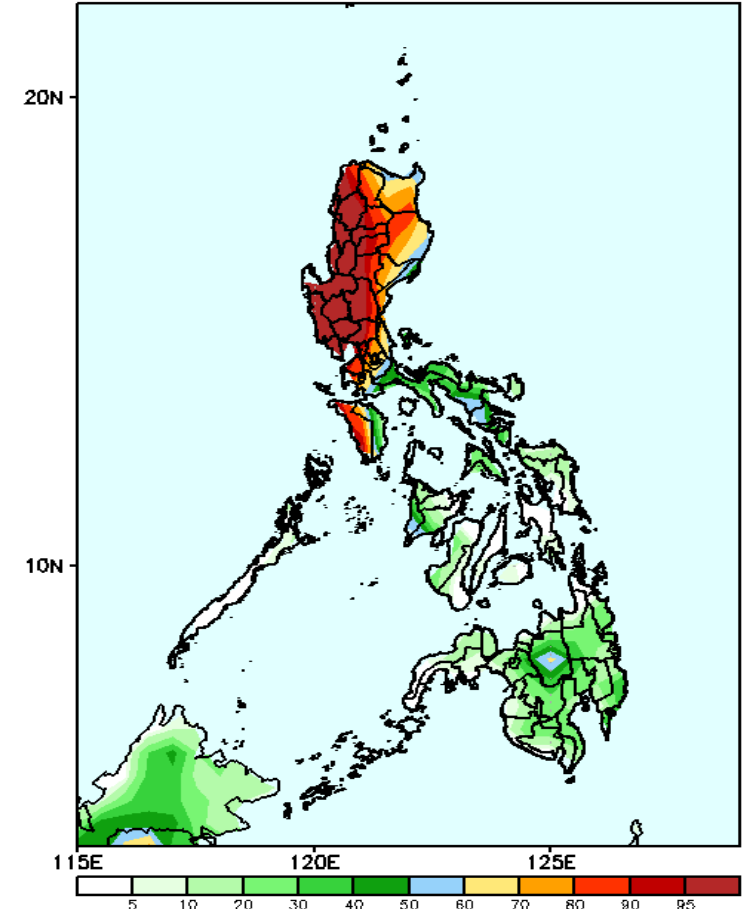
GEFS Week-1 Exceedance Prob. > 25mm
Valid: 20240724 - 20240730



Probability to Exceed 25mm

- High to very high over Luzon except Palawan;
- Moderate to high over the rest of the country.

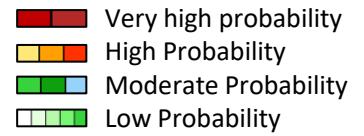
GEFS Week-1 Exceedance Prob. > 50mm
Valid: 20240724 - 20240730



Probability to Exceed 50mm

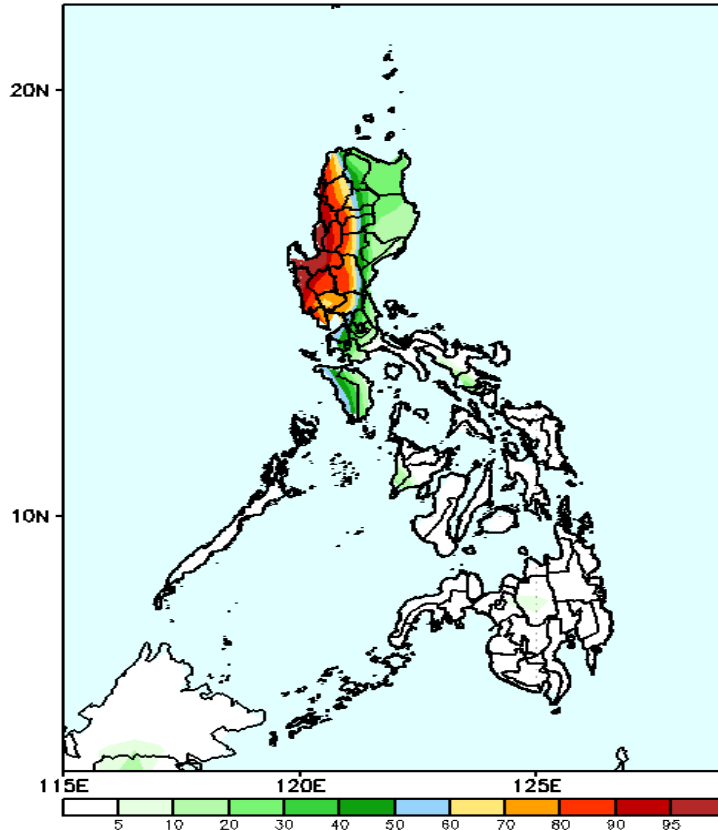
- High to very high over Ilocos Region, CAR, Central Luzon, NCR, Cavite, Batangas, and Laguna;
- Moderate to high over Bicol Region, Quezon, Antique and western Iloilo;
- Low over the rest of the country.

Exceedance Probability > 100/150/200 mm



Week 1: Jul 24-30, 2024

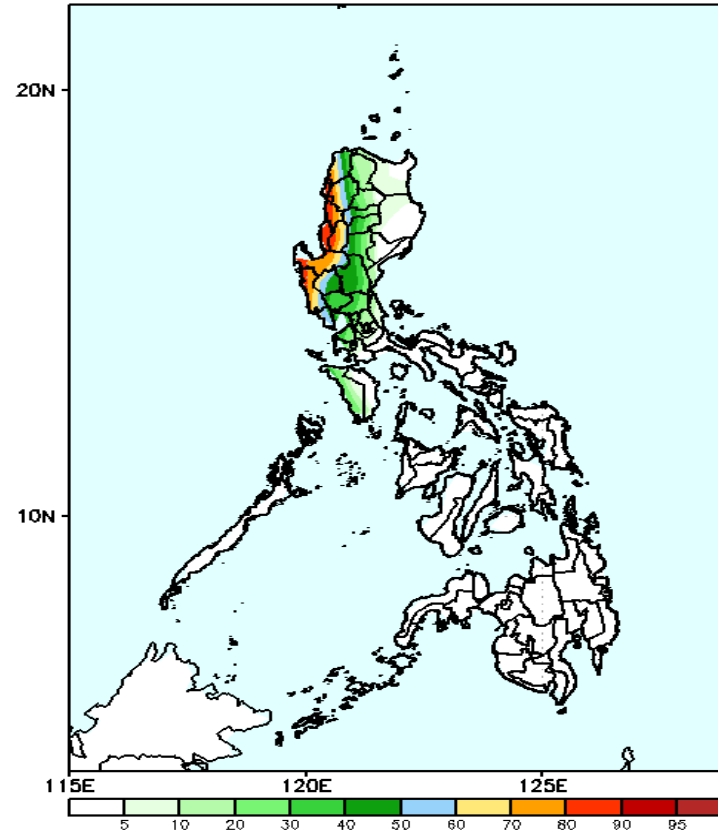
GEFS Week-1 Exceedance Prob. > 100mm
Valid: 20240724 - 20240730



Probability to Exceed 100mm

- Moderate to high over High to very high over Ilocos Region, western portion of CAR, most of Central Luzon, NCR and Cavite;
- Low to moderate over the rest of Luzon;
- Low over the rest of the country.

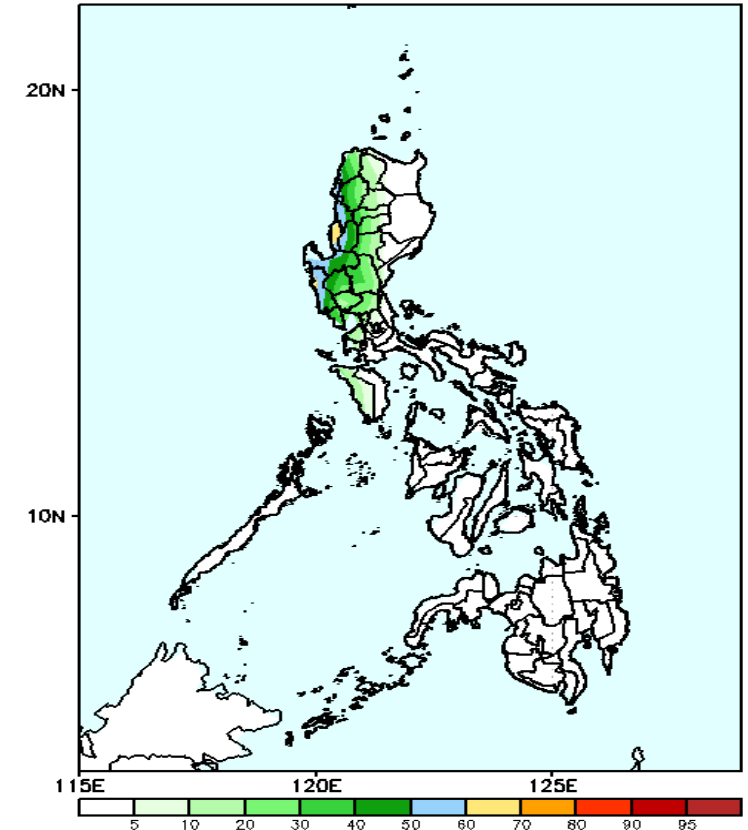
GEFS Week-1 Exceedance Prob. > 150mm
Valid: 20240724 - 20240730



Probability to Exceed 150mm

- Moderate to high over most parts of Ilocos Region, Abra, Benguet and the western section of Central Luzon;
- Low to moderate over the rest of Luzon;
- Low over Visayas and Mindanao.

GEFS Week-1 Exceedance Prob. > 200mm
Valid: 20240724 - 20240730

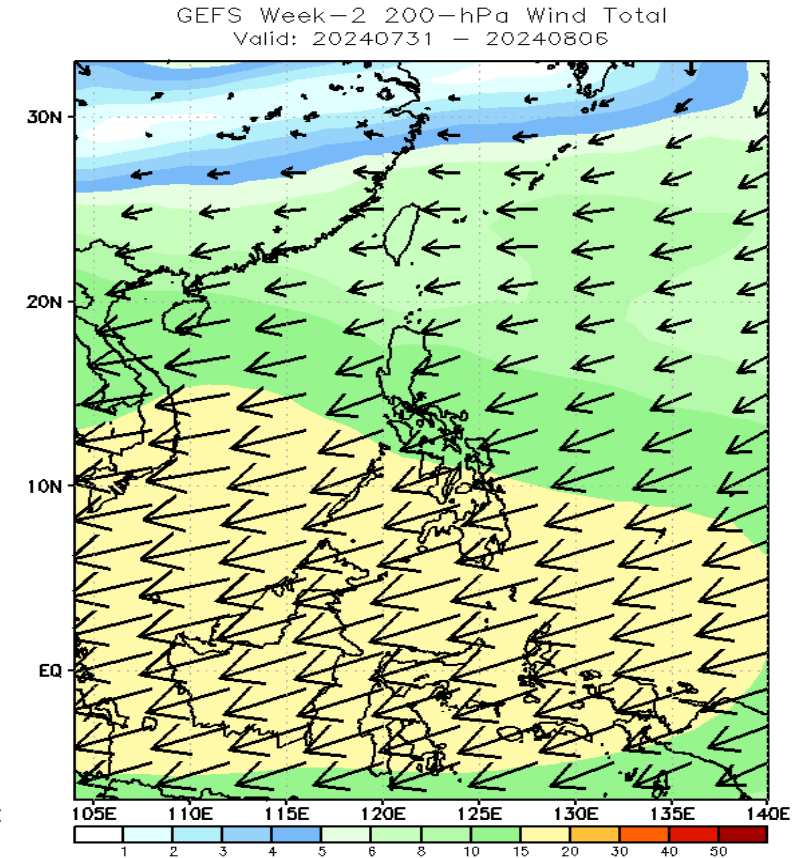
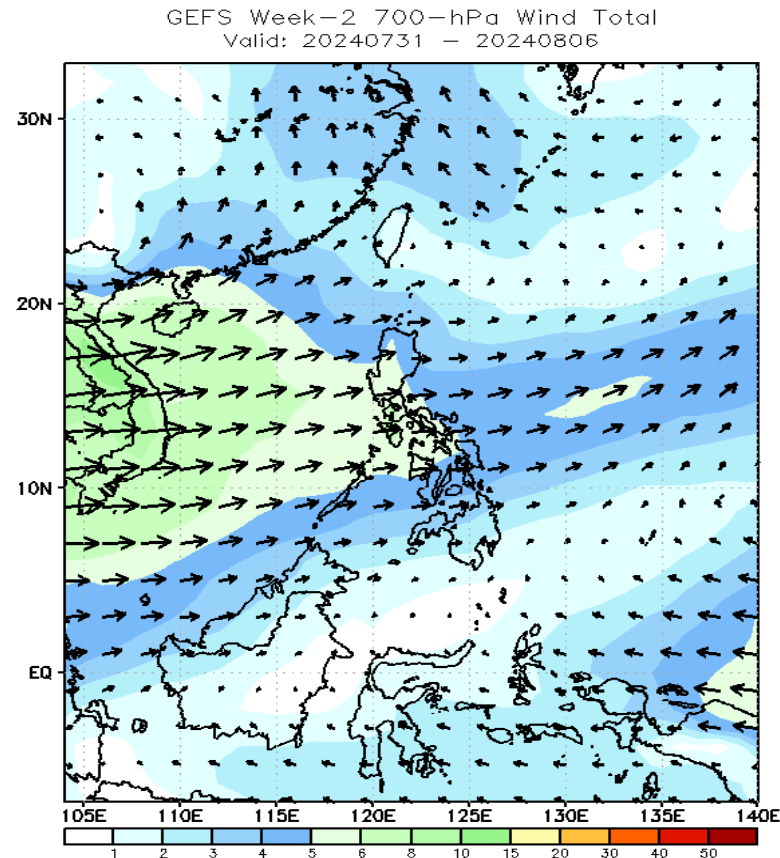
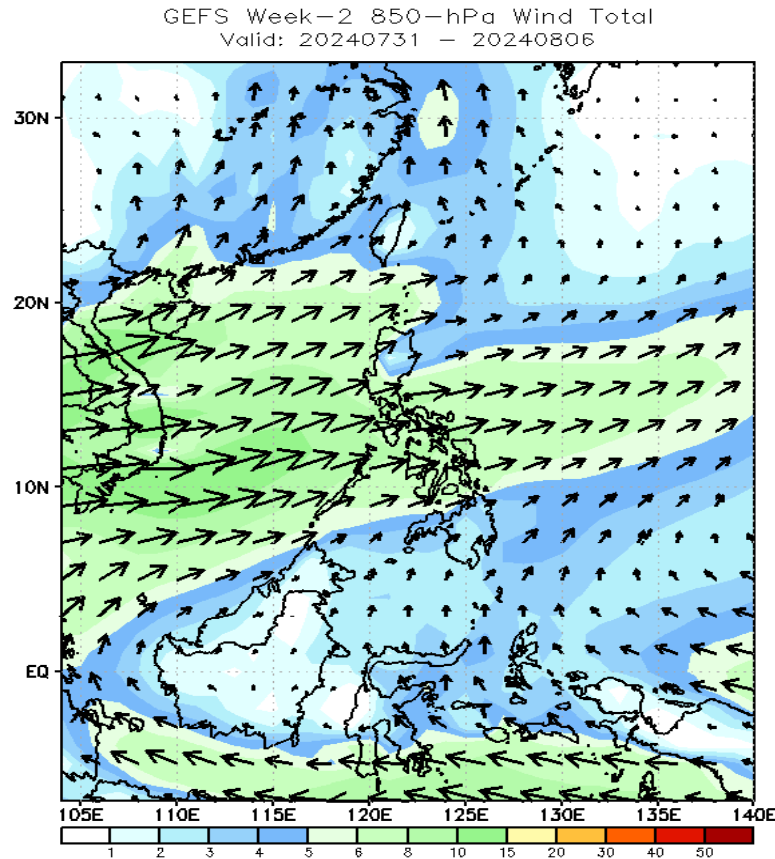


Probability to Exceed 200mm

- Moderate to high over Pangasinan and Zambales;
- Low to moderate over the rest of Luzon;
- Low over Visayas and Mindanao.

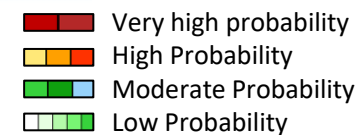
GEFS Week-2 Wind Forecasts:

Week 2: Jul 31- Aug 06, 2024



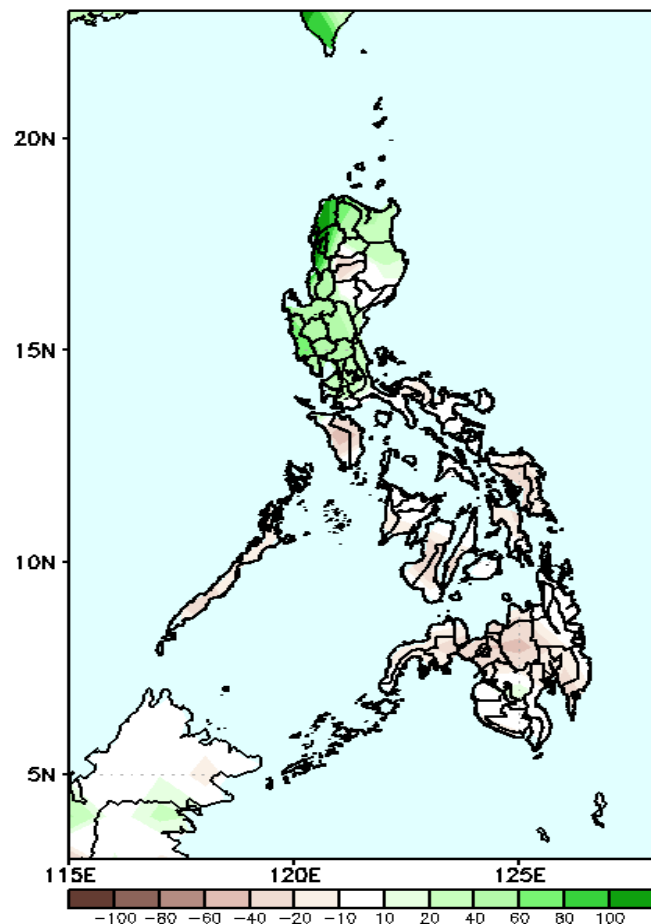
Southwest Monsoon affecting western sections of Luzon and Visayas. Easterlies affecting the rest of the country during the forecast period

Precipitation Anomaly and Exceedance Probability > 25/50 mm



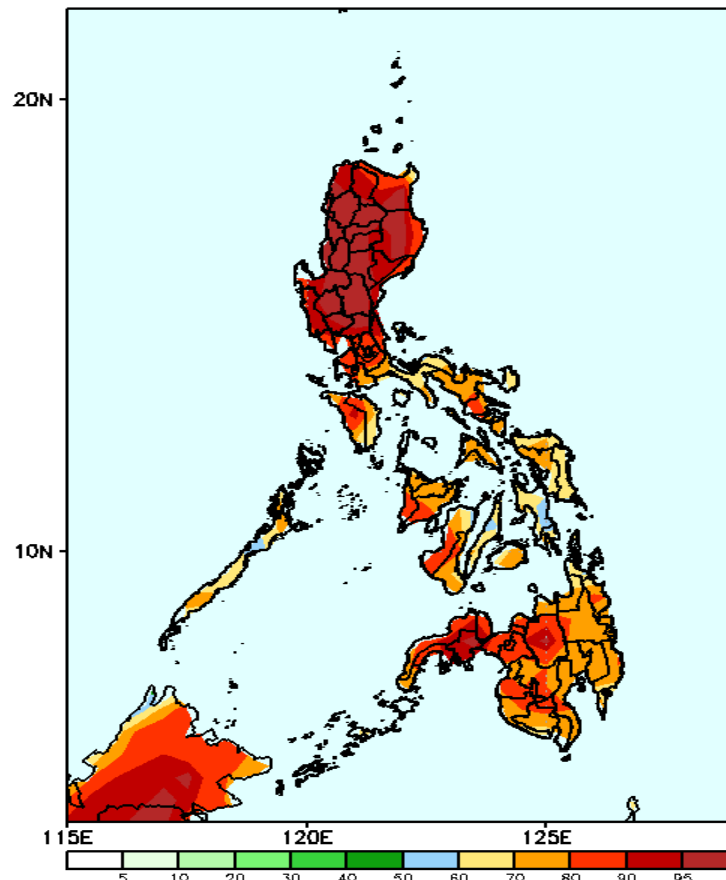
Week 2: Jul 31- Aug 06, 2024

GEFS Week-2 Precip Anomaly
Valid: 20240731 - 20240806



60-80mm of rainfall in most parts of Luzon while 40-60mm deficit of rainfall over the rest of the country.

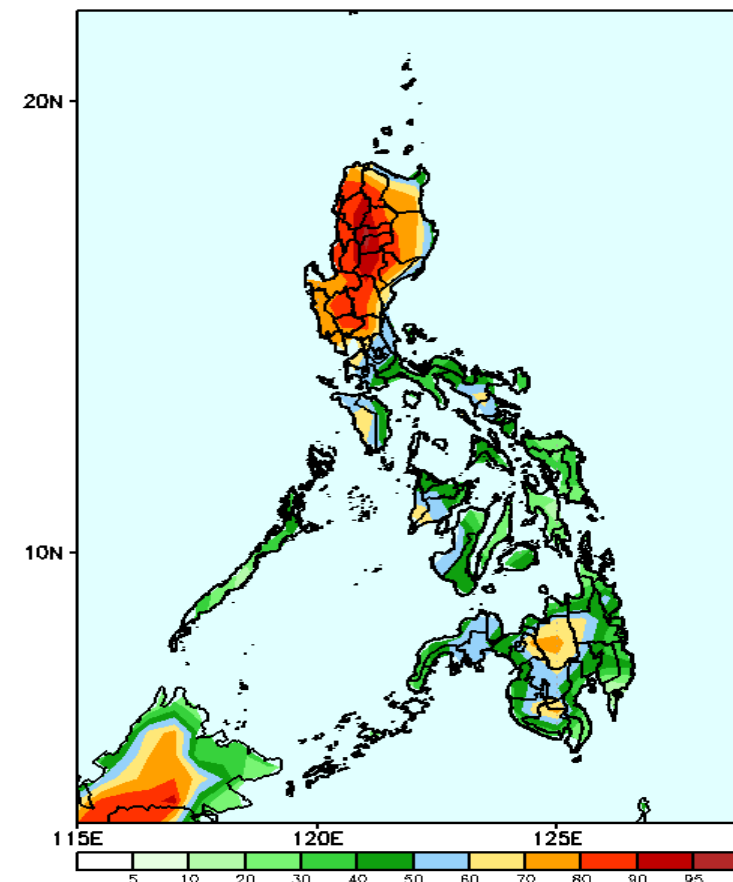
GEFS Week-2 Exceedance Prob. > 25mm
Valid: 20240731 - 20240806



Probability to Exceed 25mm

- High to very high over most parts of Luzon and Mindanao;
- Moderate to high over Visayas.

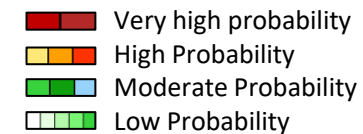
GEFS Week-2 Exceedance Prob. > 50mm
Valid: 20240731 - 20240806



Probability to Exceed 50mm

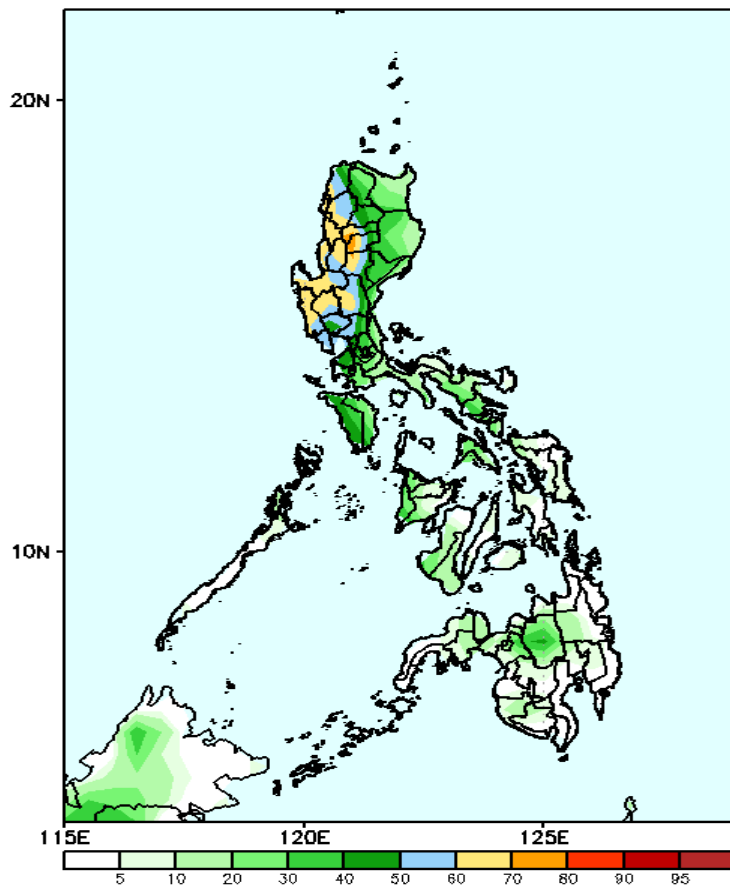
- Moderate to high over most of Luzon, Panay and most of Mindanao;
- Low to moderate over the rest of the country.

Exceedance Probability > 100/150/200 mm



Week 2: Jul 31- Aug 06, 2024

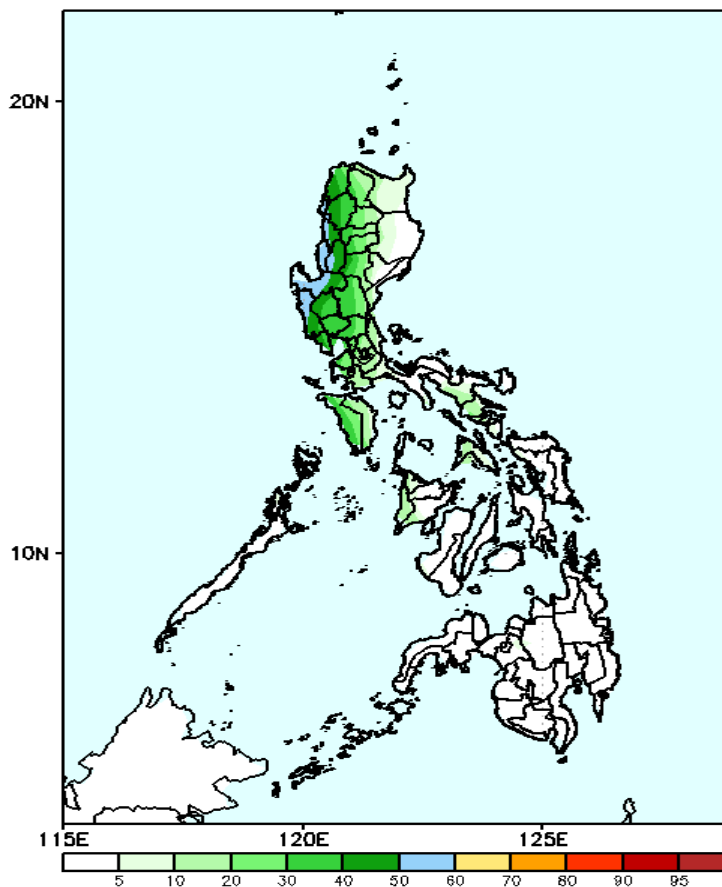
GEFS Week-2 Exceedance Prob. > 100mm
Valid: 20240731 - 20240806



Probability to Exceed 100mm

- Moderate to high over Ilocos Region, Abra, Benguet, Mountain Province, Ifugao, Nueva Vizcaya, and most of Central Luzon
- Low to moderate over the rest of Luzon;
- Low over Visayas and Mindanao.

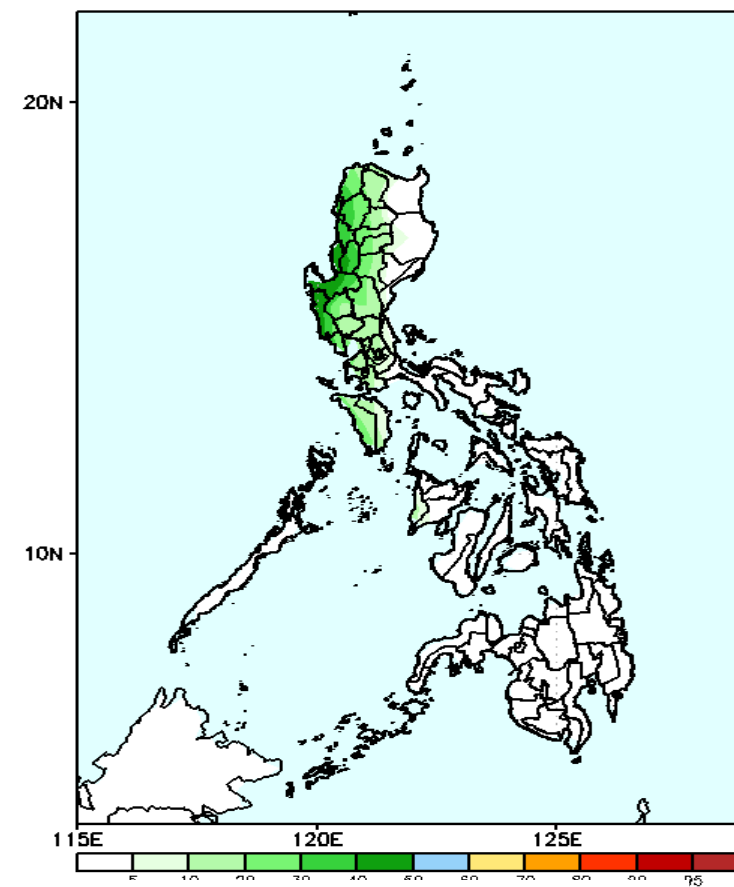
GEFS Week-2 Exceedance Prob. > 150mm
Valid: 20240731 - 20240806



Probability to Exceed 150mm

- Low to moderate over the western section of Luzon;
- Low over the rest of the country.

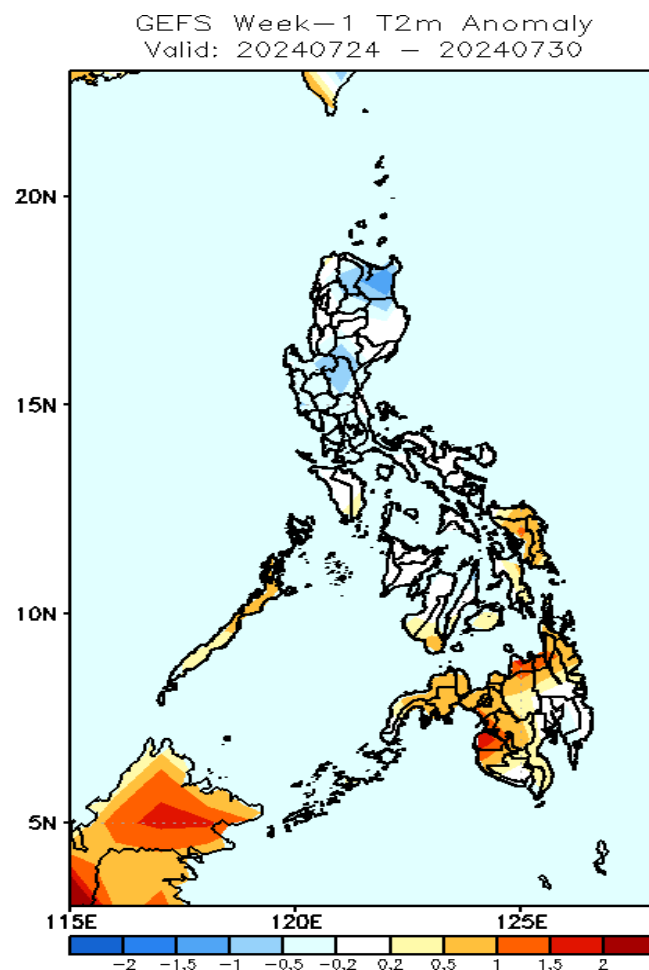
GEFS Week-2 Exceedance Prob. > 200mm
Valid: 20240731 - 20240806



Probability to Exceed 200mm

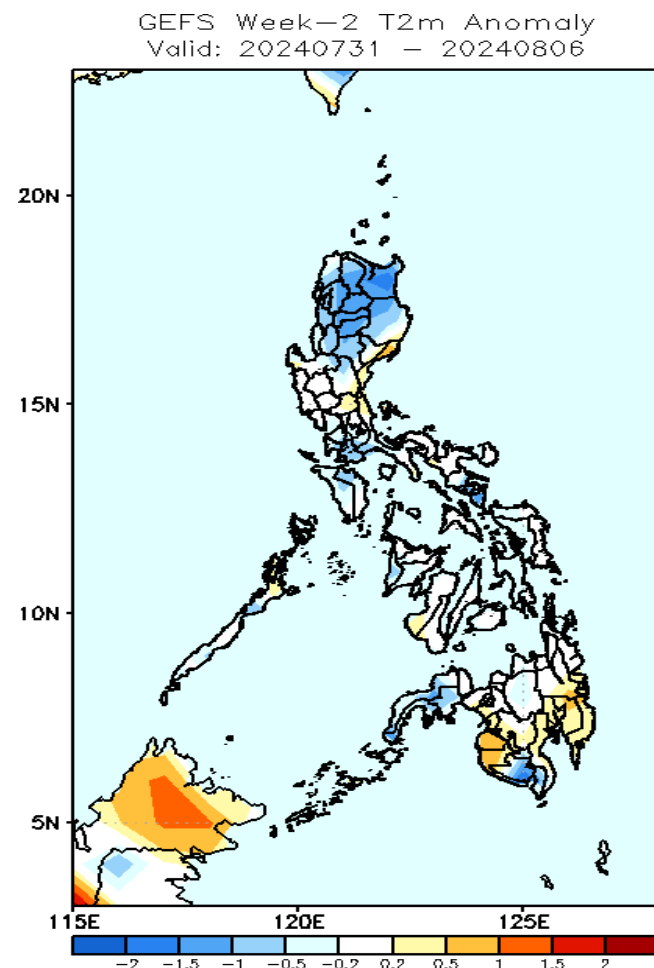
- Low to moderate over Pangasinan and Zambales;
- Low over the rest of the country.

GEFS Week-1 & 2 Forecasts: T2m Anomaly



2m Temperature Week 1: Jul 24-30, 2024

Near to cooler surface air temperature will likely be experienced in most parts of Luzon, while the rest of the country will likely have near to warmer than average surface air temperature.



2m Temperature Week 2: Jul 31- Aug 06, 2024

Near to cooler surface air temperature will likely be experienced in most parts of the country except in Aurora, Davao Region, Maguindanao and Sultan Kudarat where near to slightly warmer than average temperature is expected.