



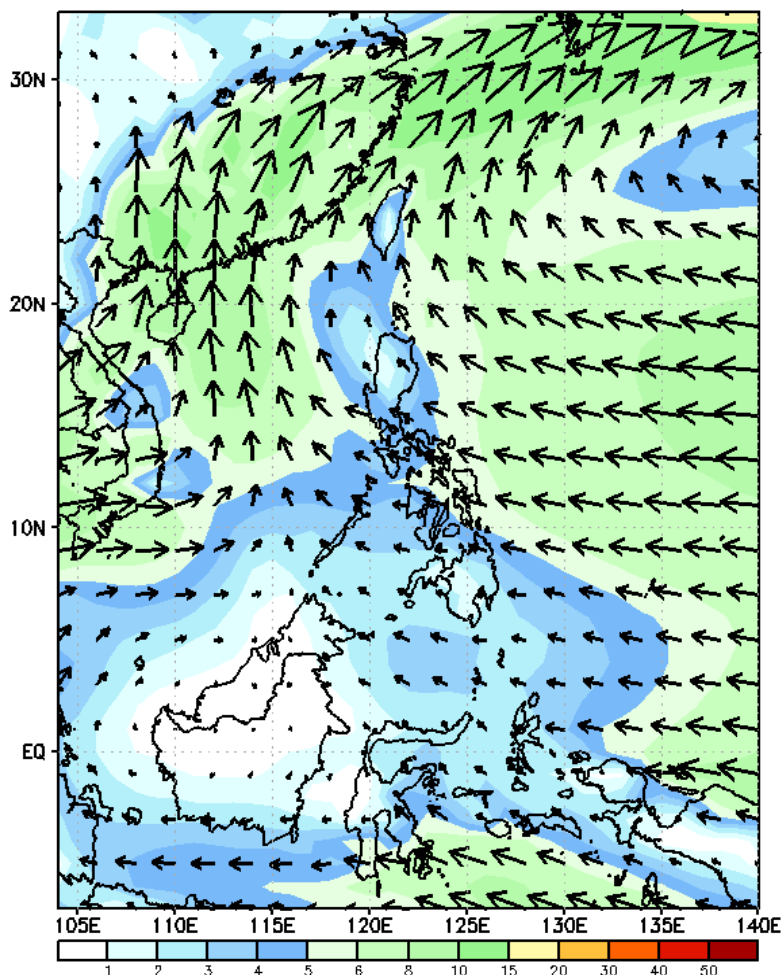
Week 1 & Week 2 Forecast for the Philippines using GEFS Model



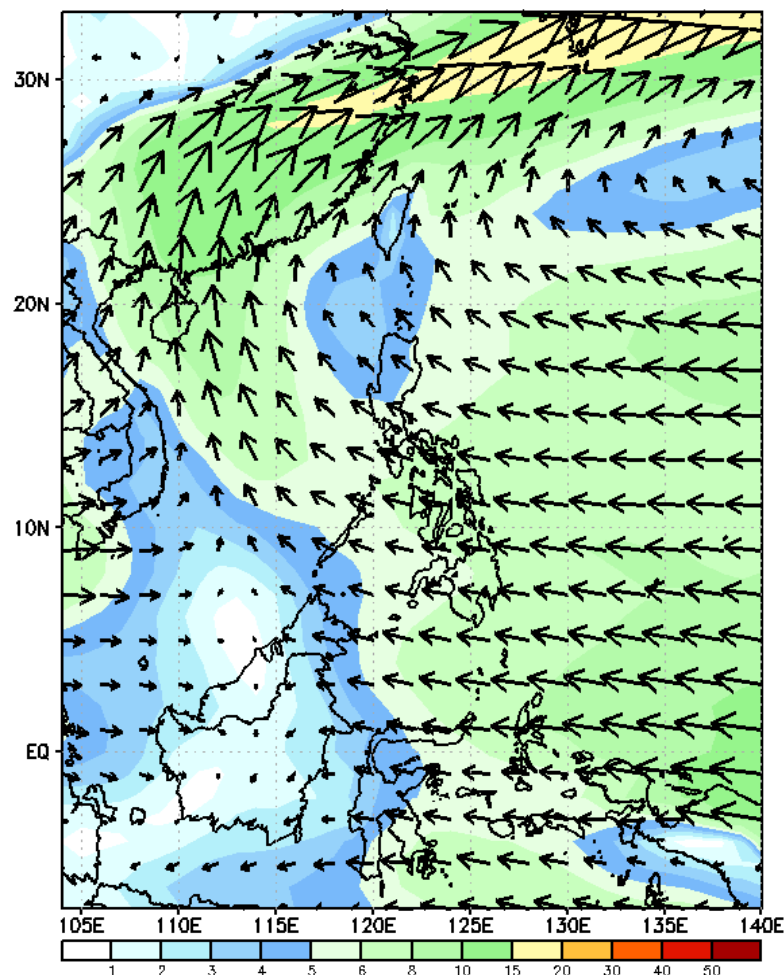
GEFS Week-1 Wind Forecasts:

Week 1: Jun 24-30, 2024

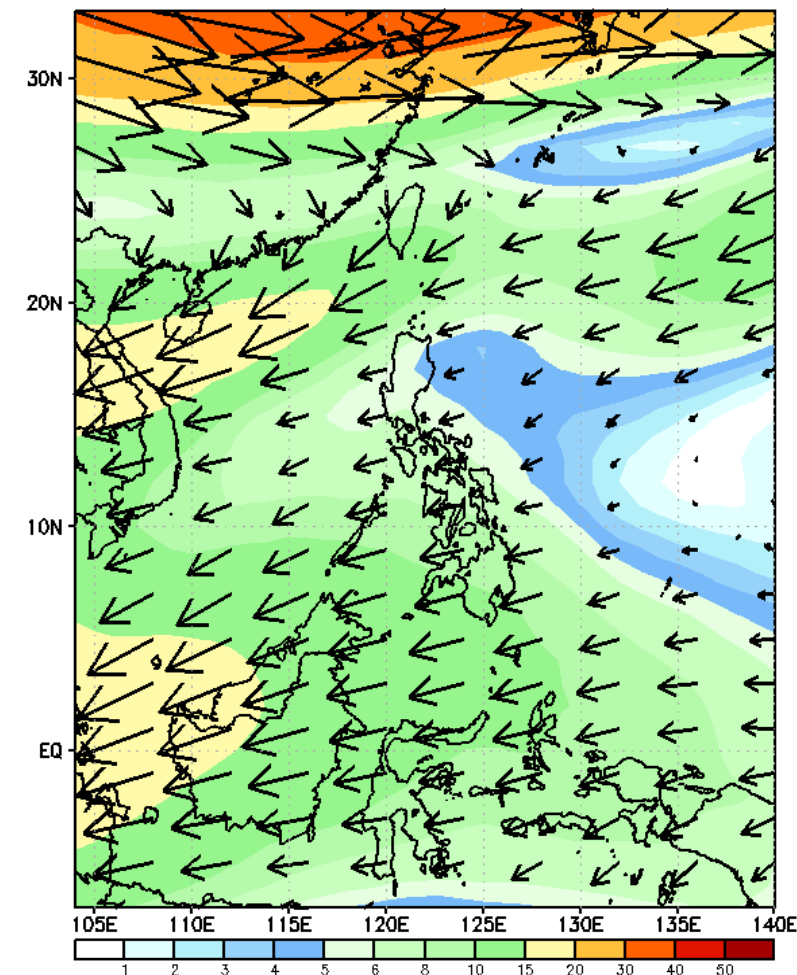
GEFS Week-1 850-hPa Wind Total
Valid: 20240624 - 20240630



GEFS Week-1 700-hPa Wind Total
Valid: 20240624 - 20240630

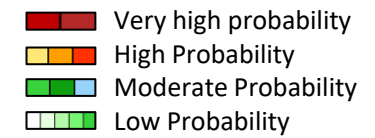


GEFS Week-1 200-hPa Wind Total
Valid: 20240624 - 20240630



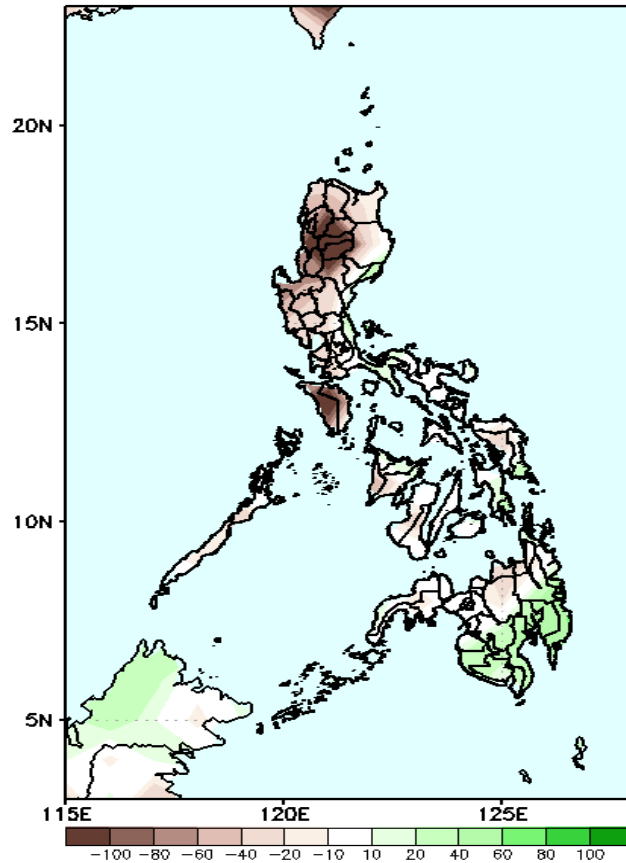
Easterlies affecting most parts of the country during the forecast period.

Precipitation Anomaly and Exceedance Probability > 25/50 mm



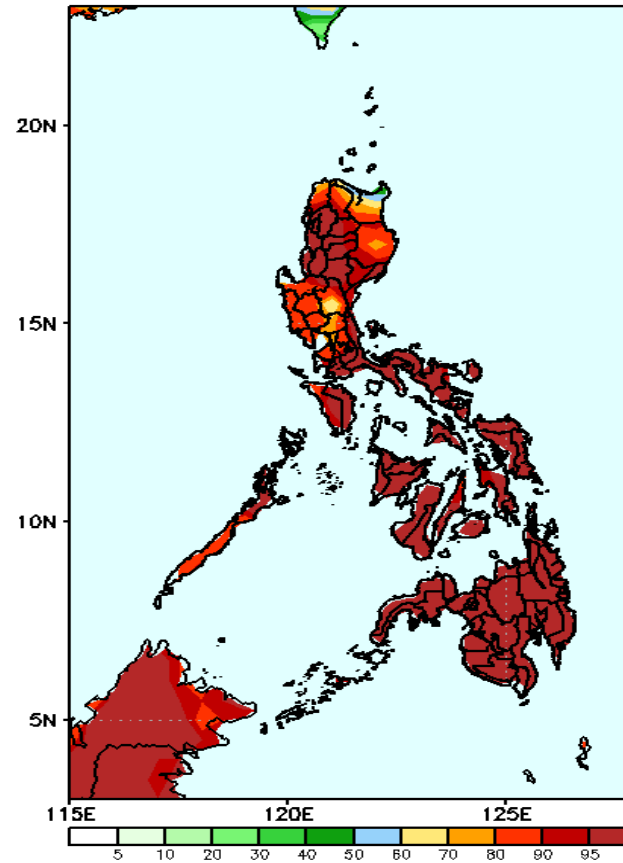
Week 1: Jun 24-30, 2024

GEFS Week-1 Precip Anomaly
Valid: 20240624 - 20240630



Rainfall deficit of more than 100mm in CAR, Ilocos Sur, La Union, and Mindoro; 20-90mm for the rest of Luzon, Visayas, and northern Mindanao while 40-70mm increase of rainfall for the rest of Mindanao .

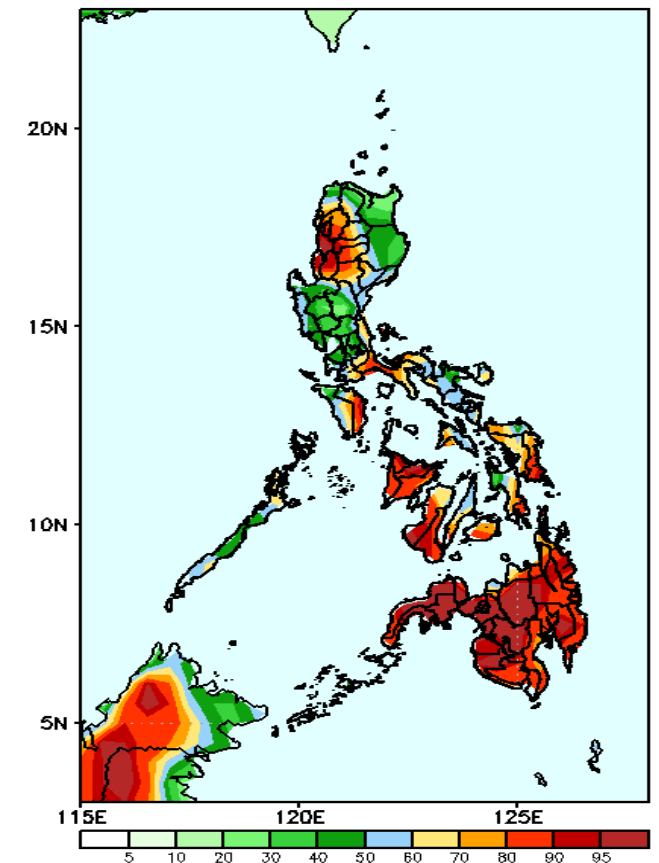
GEFS Week-1 Exceedance Prob. > 25mm
Valid: 20240624 - 20240630



Probability to Exceed 25mm

- High to very high over most of the country;
- Moderate to high over the northern section of Cagayan.

GEFS Week-1 Exceedance Prob. > 50mm
Valid: 20240624 - 20240630

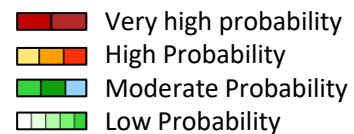


Probability to Exceed 50mm

- High to very high over Mindanao, Western Visayas, CAR, La Union, Ilocos Sur;
- Moderate to high over the rest of Luzon and Visayas.

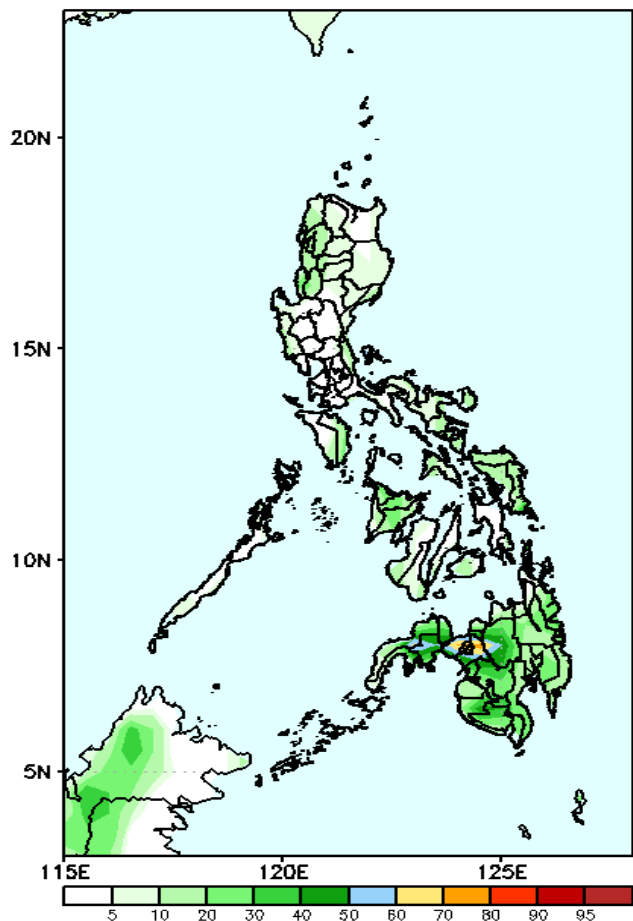


Exceedance Probability > 100/150/200 mm



Week 1: Jun 24-30, 2024

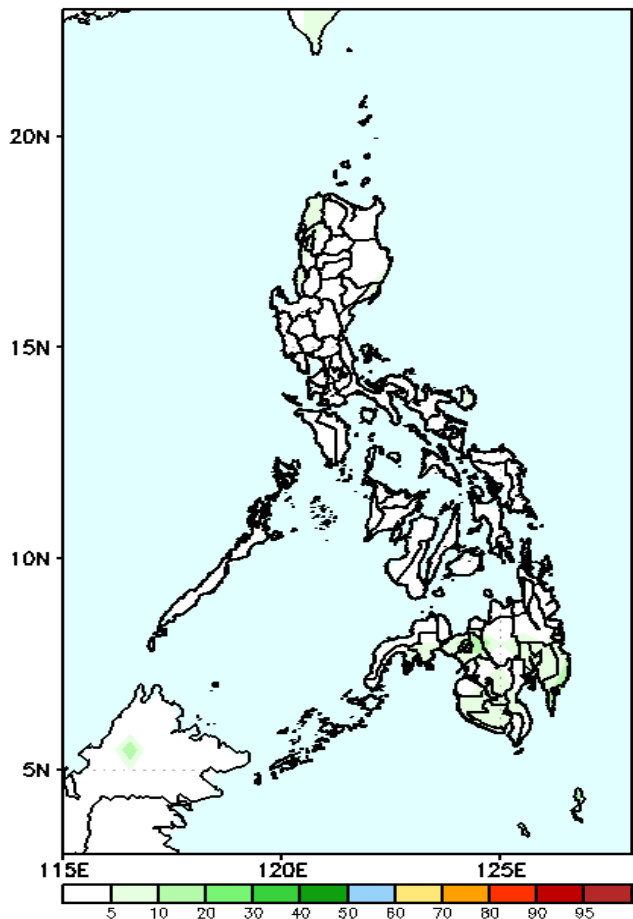
GEFS Week-1 Exceedance Prob. > 100mm
Valid: 20240624 - 20240630



Probability to Exceed 100mm

- Moderate to high over Bukidnon and Lanao Del Sur;
- Low to moderate over the rest of Mindanao;
- Low over Luzon and Visayas.

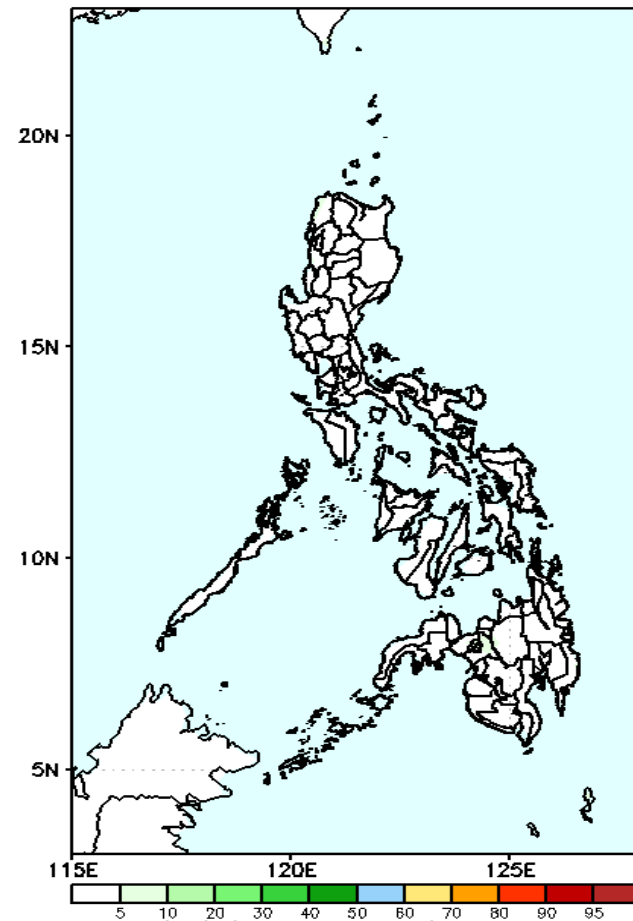
GEFS Week-1 Exceedance Prob. > 150mm
Valid: 20240624 - 20240630



Probability to Exceed 150mm

- Low across the country.

GEFS Week-1 Exceedance Prob. > 200mm
Valid: 20240624 - 20240630



Probability to Exceed 200mm

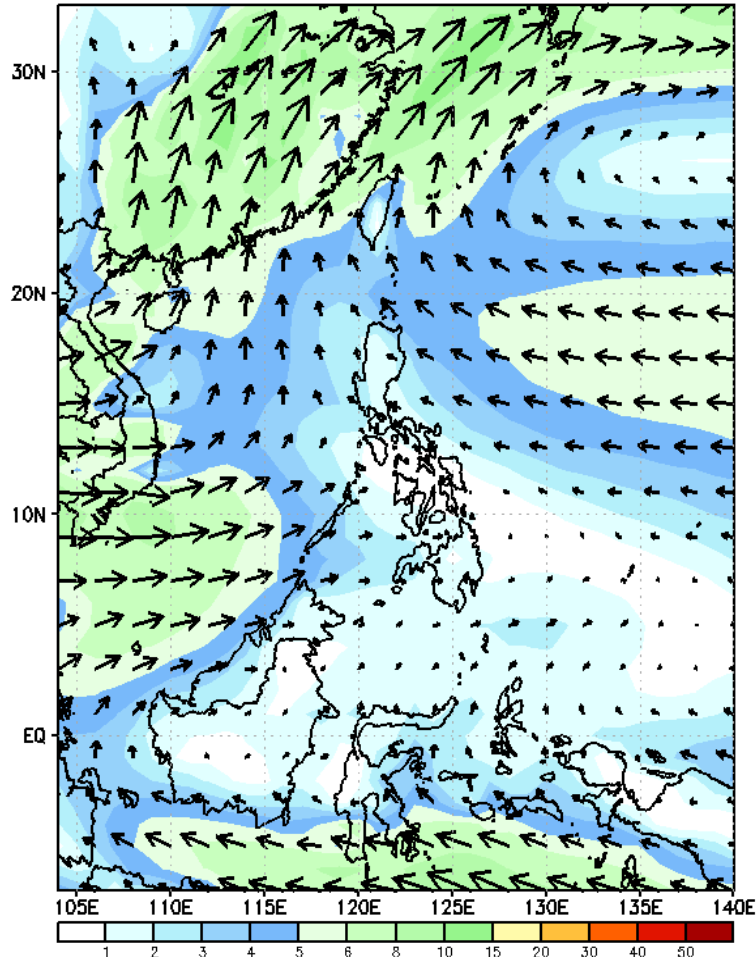
- Low across the country.



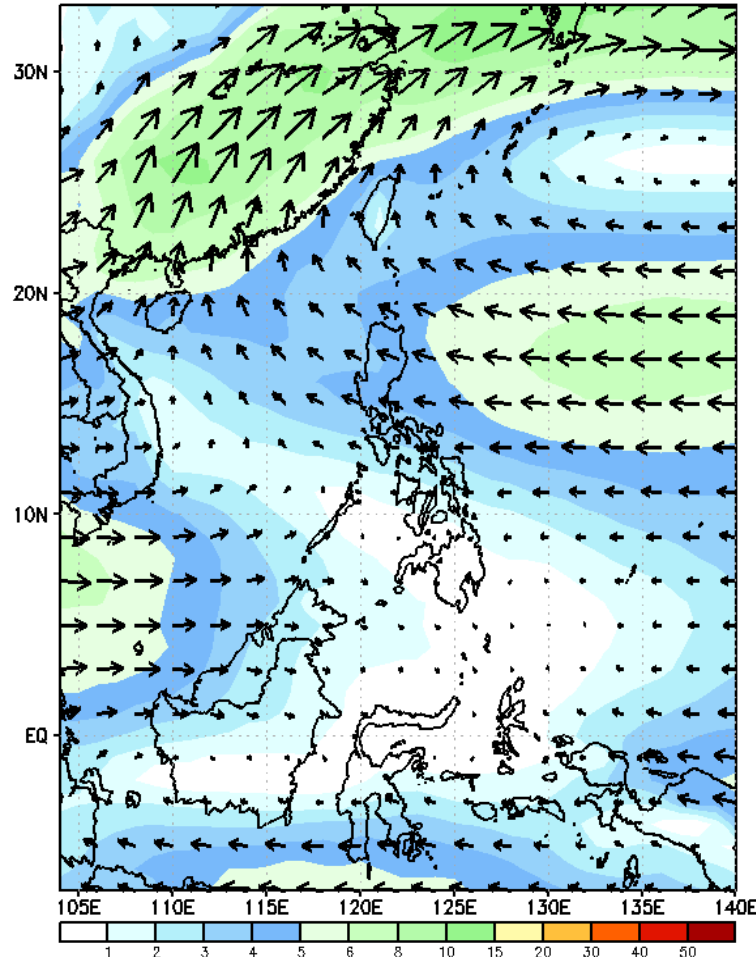
GEFS Week-2 Wind Forecasts:

Week 2: Jul 01-07, 2024

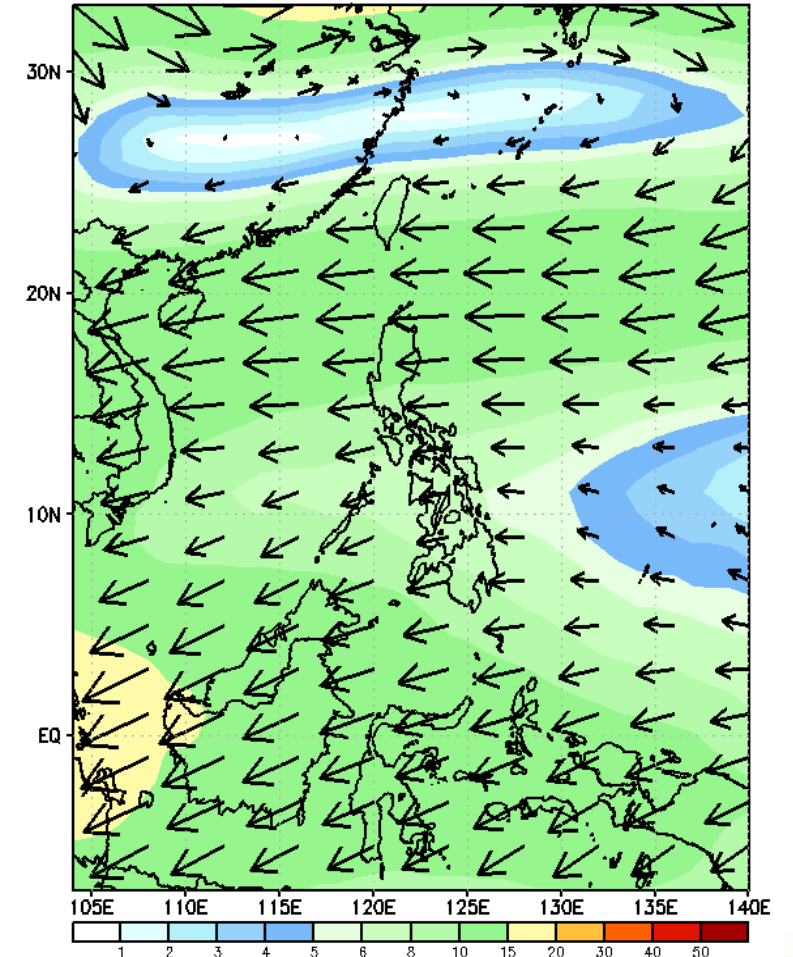
GEFS Week-2 850-hPa Wind Total
Valid: 20240701 - 20240707



GEFS Week-2 700-hPa Wind Total
Valid: 20240701 - 20240707

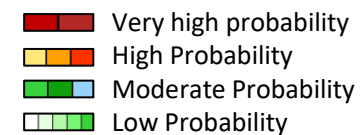


GEFS Week-2 200-hPa Wind Total
Valid: 20240701 - 20240707



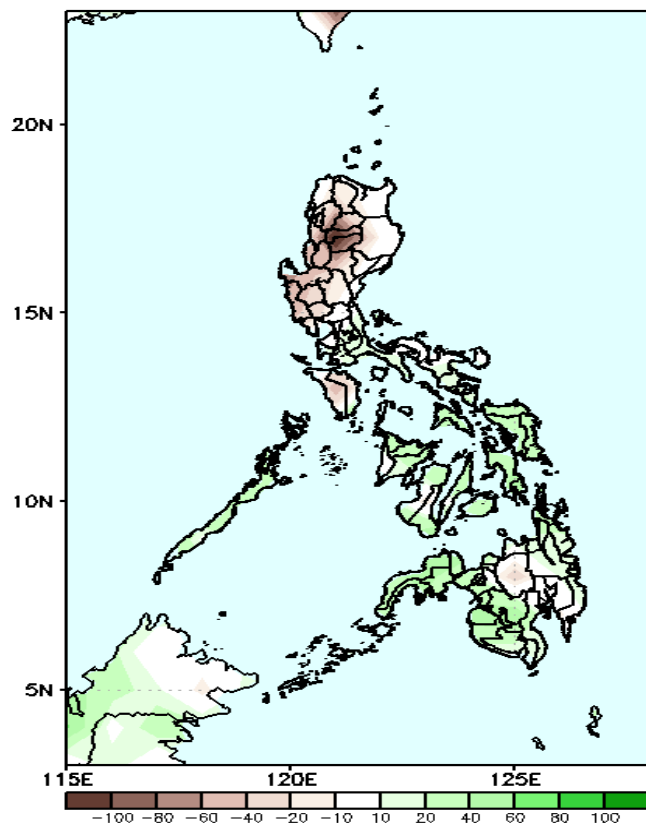
Southwest Monsoon affecting most parts of Western Luzon while Easterlies affecting the rest of the country during the forecast period

Precipitation Anomaly and Exceedance Probability > 25/50 mm



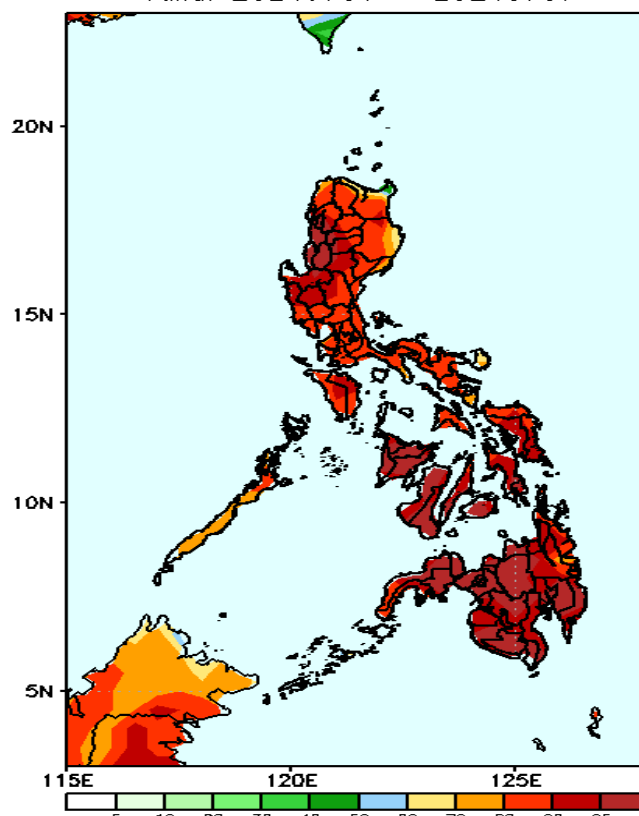
Week 2: Jul 01-07, 2024

GEFS Week-2 Precip Anomaly
Valid: 20240701 - 20240707



Rainfall deficit of 20-80mm in most parts of the Luzon while 40-70mm increase of rainfall in most parts of Visayas, Caraga Region and western Mindanao is expected.

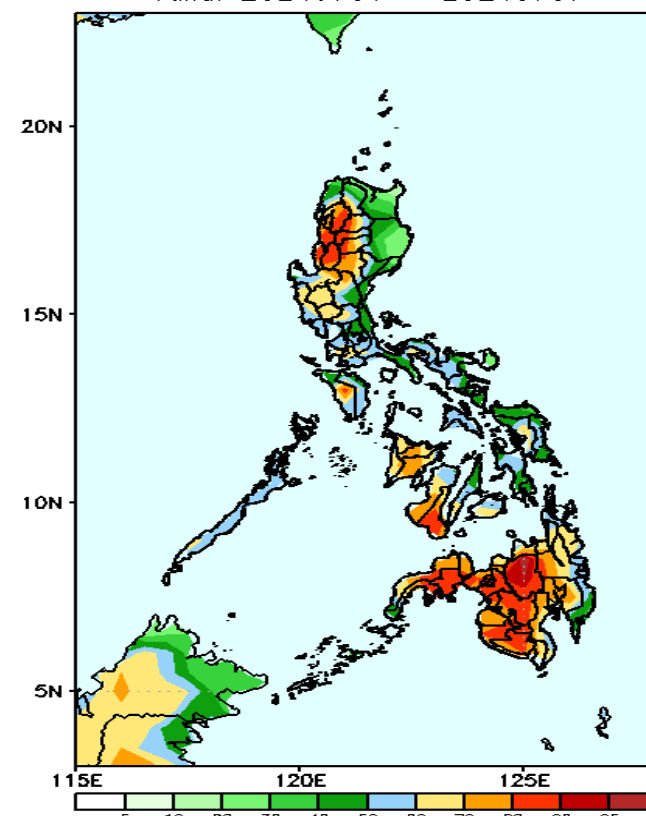
GEFS Week-2 Exceedance Prob. > 25mm
Valid: 20240701 - 20240707



Probability to Exceed 25mm

- High to very high over most of the country;
- Moderate to high over the northern section of Cagayan.

GEFS Week-2 Exceedance Prob. > 50mm
Valid: 20240701 - 20240707

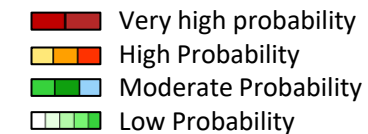


Probability to Exceed 50mm

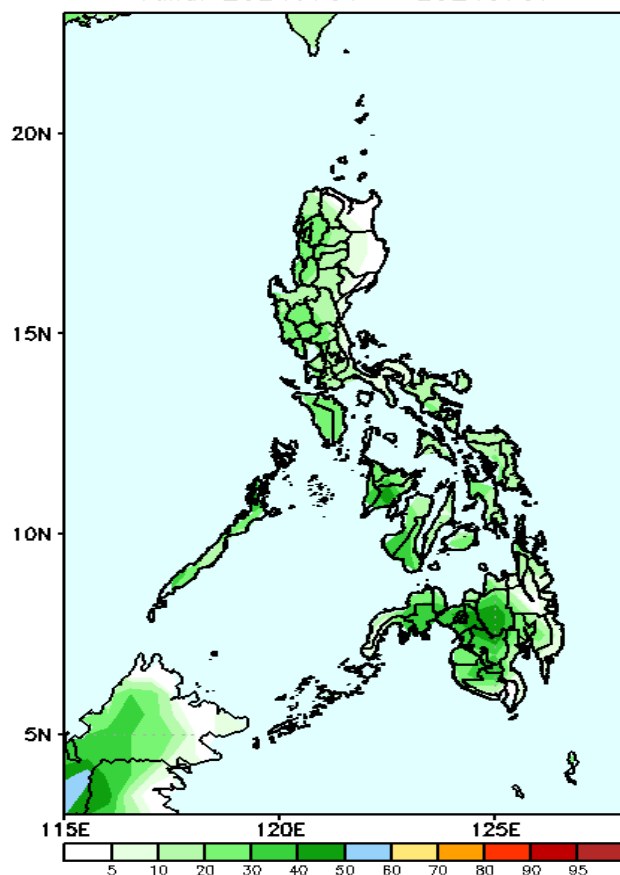
- High to very high over Bukidnon, Lanao Provinces, Maguindanao, Zamboanga del Sur, and Cotabato;
- Moderate to high over the Visayas, the rest of Mindanao, NCR, Central and Southern Luzon, and the western part of Northern Luzon;
- Low to moderate of the rest of Northern Luzon.

Exceedance Probability > 100/150/200 mm

Week 2: Jul 01-07, 2024



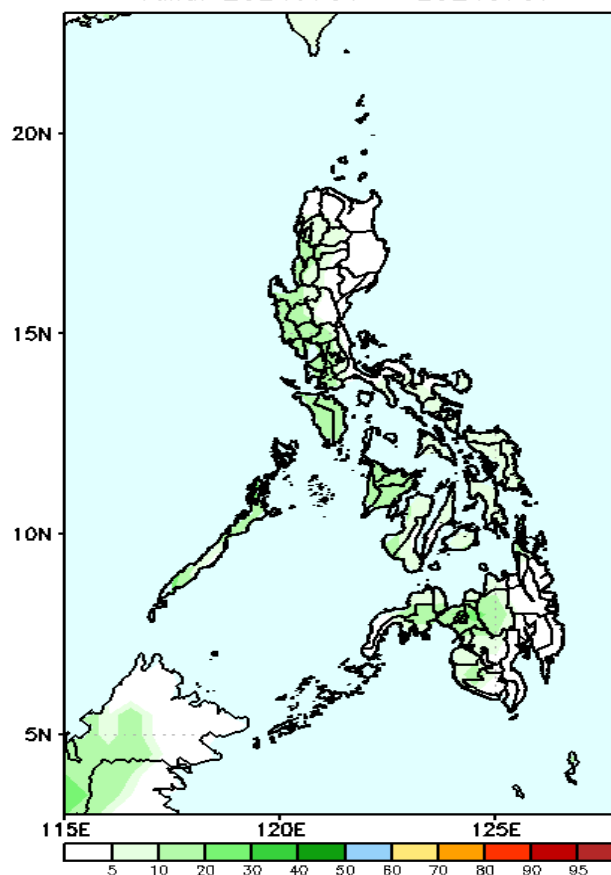
GEFS Week-2 Exceedance Prob. > 100mm
Valid: 20240701 - 20240707



Probability to Exceed 100mm

- Low to moderate over the western portion of Mindanao;
- Low over the rest of the country.

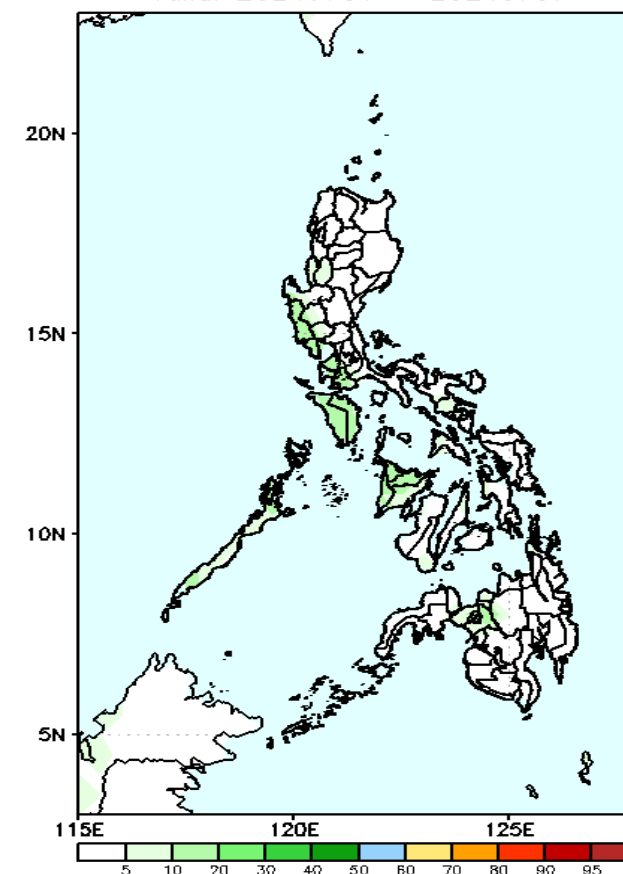
GEFS Week-2 Exceedance Prob. > 150mm
Valid: 20240701 - 20240707



Probability to Exceed 150mm

- Low across the country.

GEFS Week-2 Exceedance Prob. > 200mm
Valid: 20240701 - 20240707

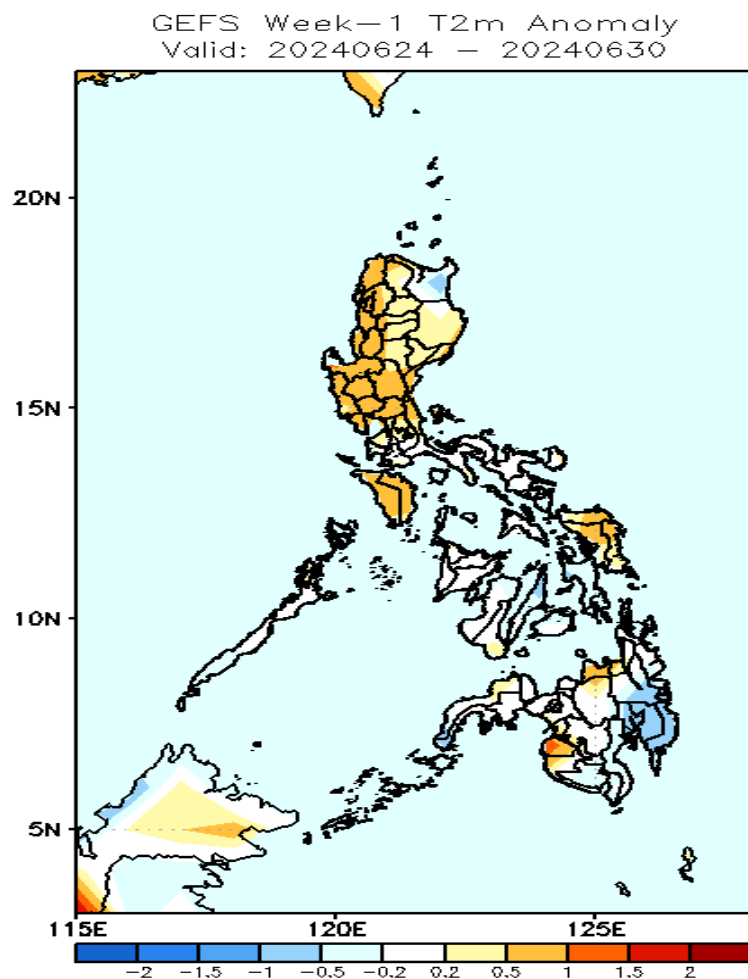


Probability to Exceed 200mm

- Low across the country.

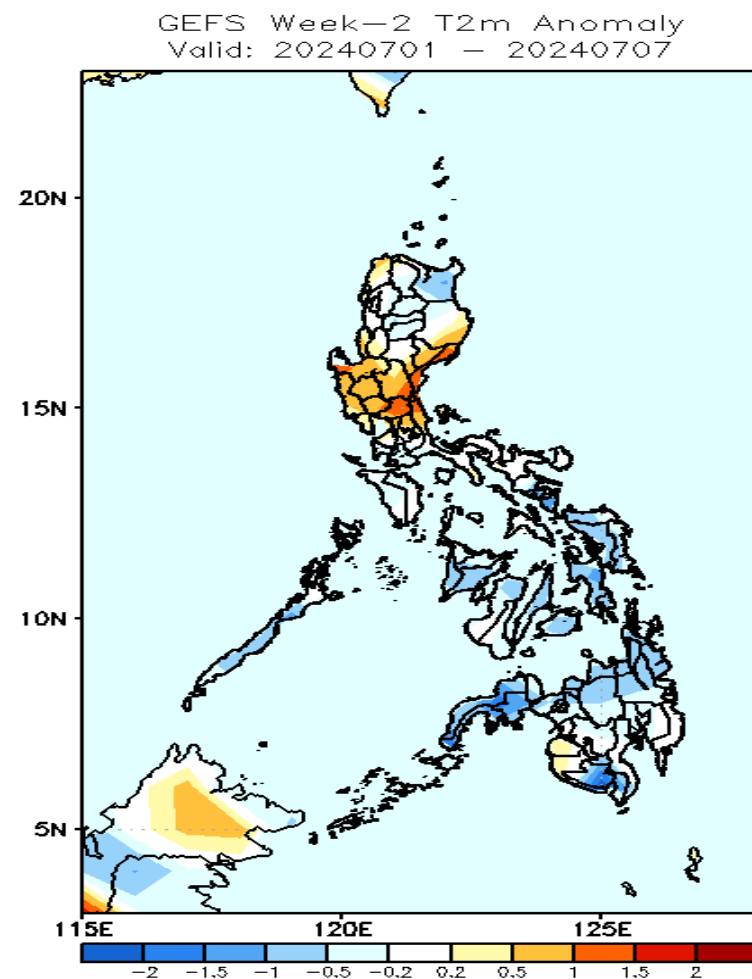


GEFS Week-1 & 2 Forecasts: T2m Anomaly



2m Temperature Week 1: Jun 24-30, 2024

Near to slightly warmer than average surface air temperature will likely be experienced in most parts of the country except in the southeastern part of Mindanao where slightly cooler temperature is expected.



2m Temperature Week 2: Jul 01-07, 2024

Near to cooler surface air temperature will likely be experienced in most parts of the country except in central Luzon and some areas in eastern Luzon where slightly warmer to warmer than average temperature is expected.