



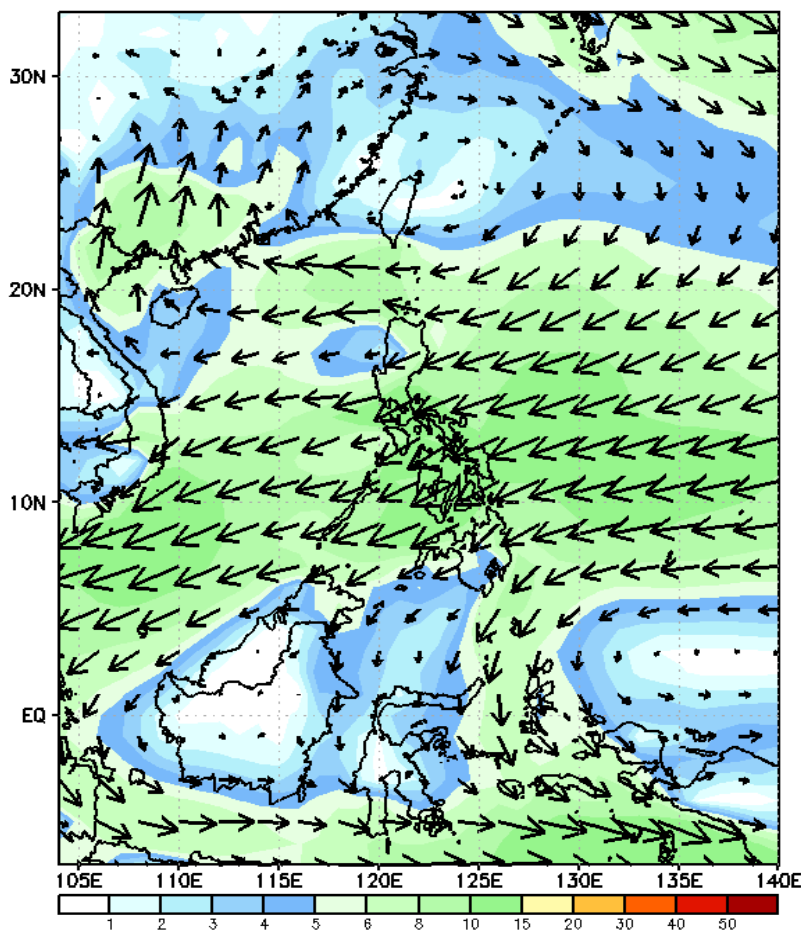
Week 1 & Week 2 Forecast for the Philippines using GEFS Model



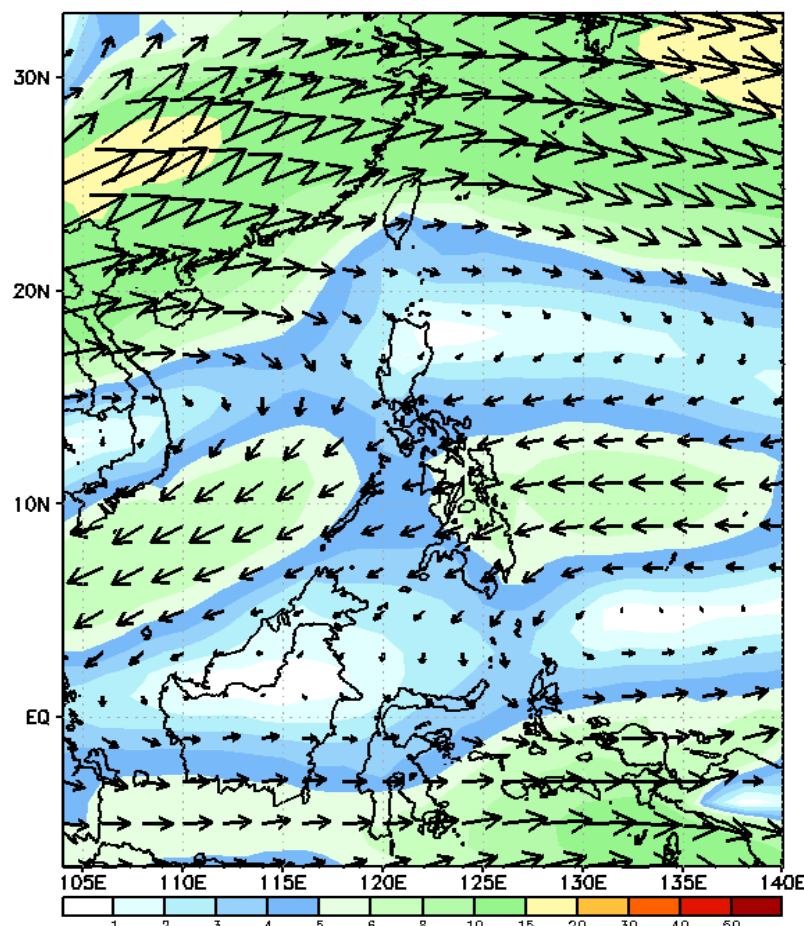
GEFS Week-1 Forecasts: Wind Forecast

Week 1: January 26- February 01, 2024

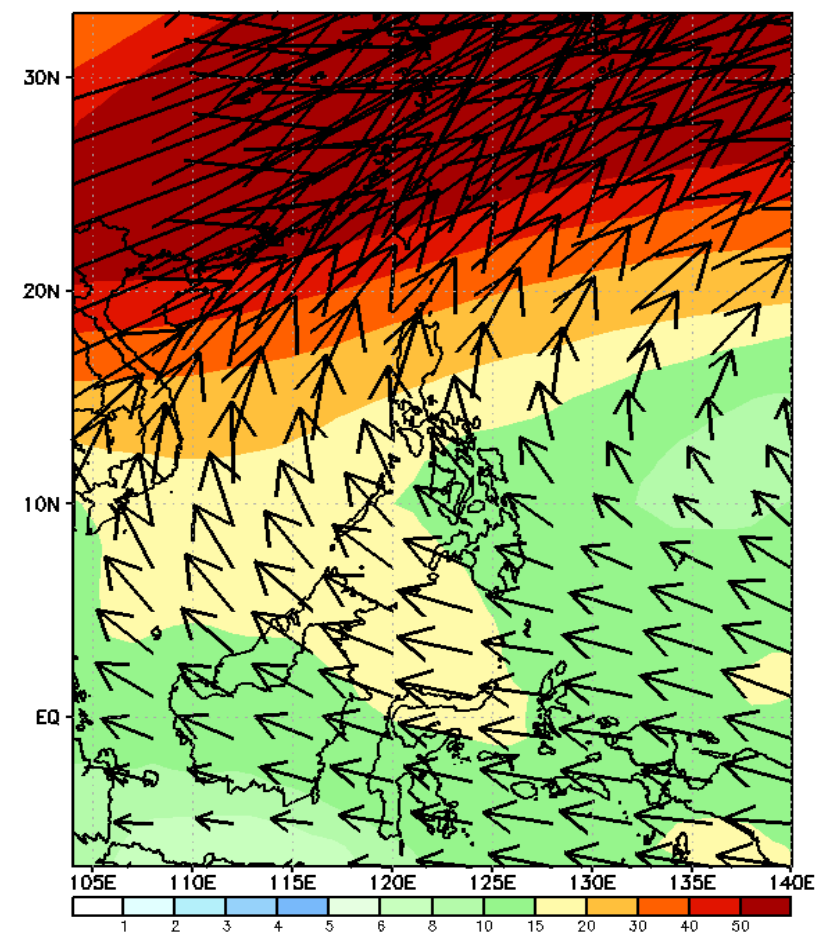
GEFS Week-1 850-hPa Wind Total
Valid: 20240126 - 20240201



GEFS Week-1 700-hPa Wind Total
Valid: 20240126 - 20240201



GEFS Week-1 200-hPa Wind Total
Valid: 20240126 - 20240201



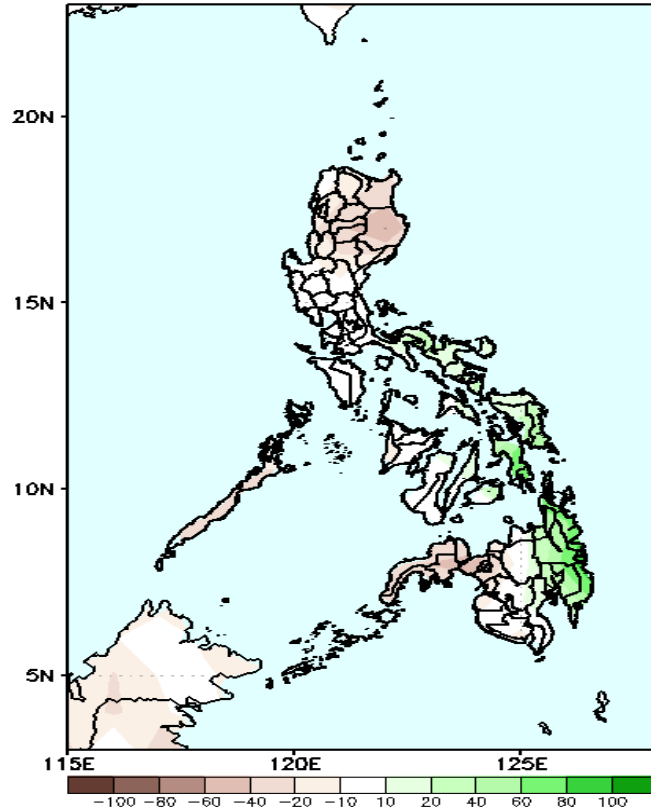
Northeast Monsoon will likely affect the eastern sections of the country.

Precipitation Anomaly and Exceedance Probability > 25/50 mm



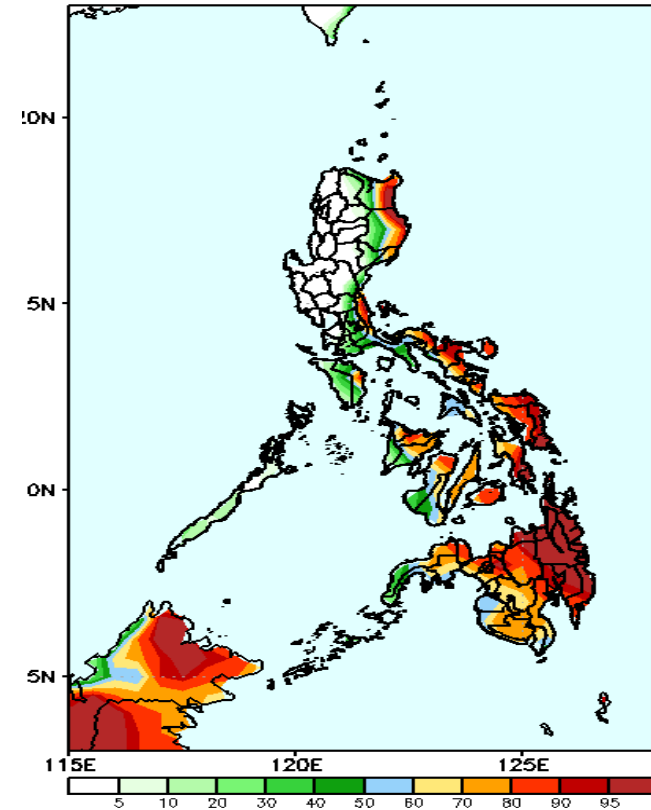
Week 1: January 26- February 01, 2024

GEFS Week-1 Precip Anomaly
Valid: 20240126 - 20240201



Rainfall deficit of 10-60mm in most parts of the country except in Bicol Region and eastern parts of Visayas & Mindanao where an increase of 10-80mm of rainfall is likely.

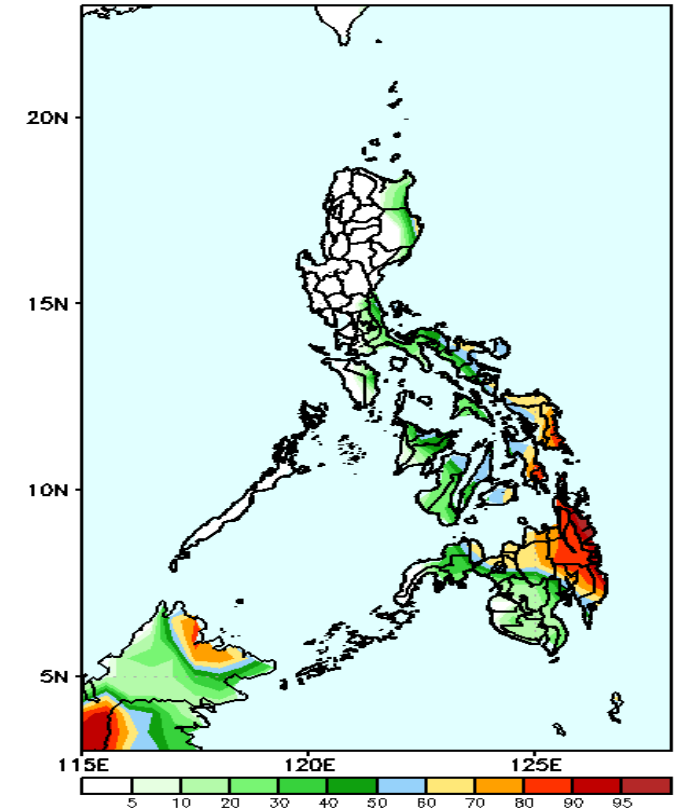
GEFS Week-1 Exceedance Prob. > 25mm
Valid: 20240126 - 20240201



Probability to Exceed 25mm

- High to very high over the eastern portions of Cagayan, Isabela and Bicol Region, Samar provinces and Northern and Eastern Mindanao;
- Moderate to high over Aurora, Quezon, the rest of Bicol region and the rest of Visayas and Mindanao;
- Low over the rest of the country.

GEFS Week-1 Exceedance Prob. > 50mm
Valid: 20240126 - 20240201

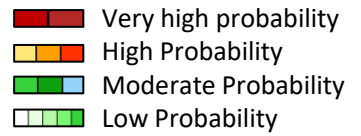


Probability to Exceed 50 mm

- High to very high eastern Mindanao;
- Moderate to high over Eastern Visayas and Northern Mindanao;
- Low to moderate over the Bicol Region, Aklan and Capiz;
- Low over the rest of the country.

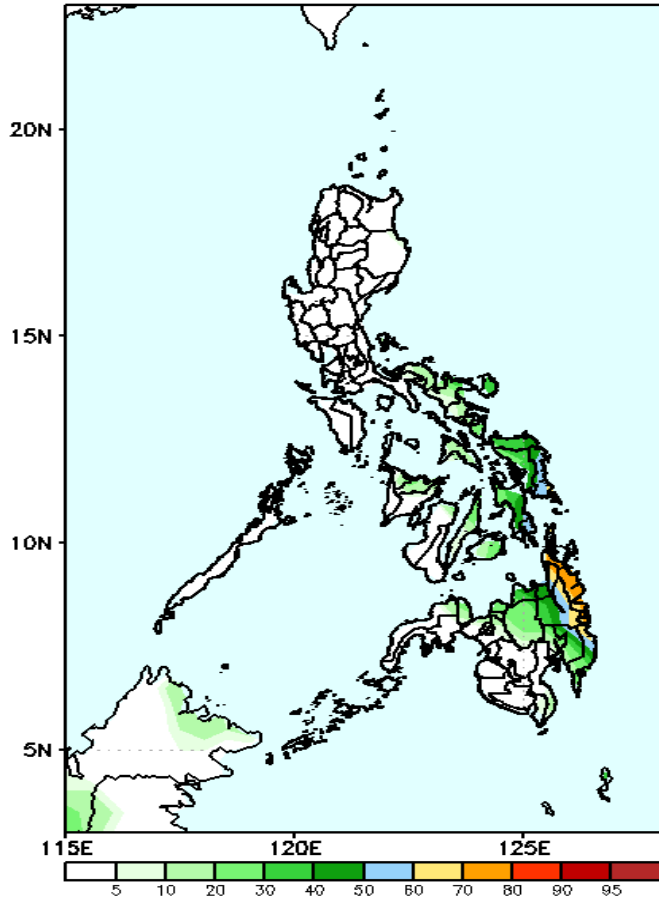


Exceedance Probability > 100/150/200 mm



Week 1: January 26- February 01, 2024

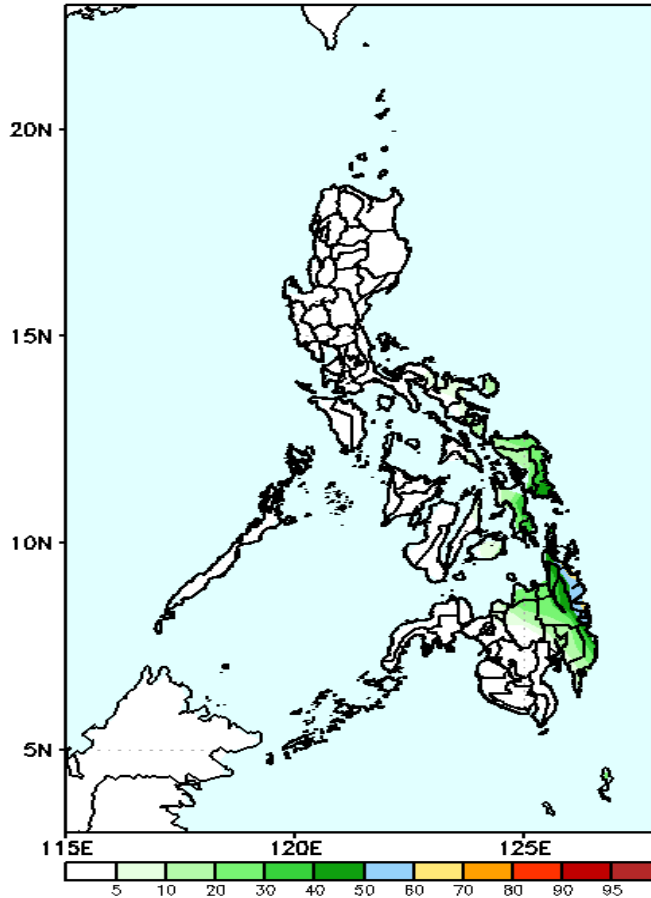
GEFS Week-1 Exceedance Prob. > 100mm
Valid: 20240126 - 20240201



Probability to Exceed 100mm

- Moderate to high over Agusan del Norte and Surigao provinces;
- Low to moderate over Eastern Visayas and the rest of Eastern Mindanao;
- Low over the rest of the country.

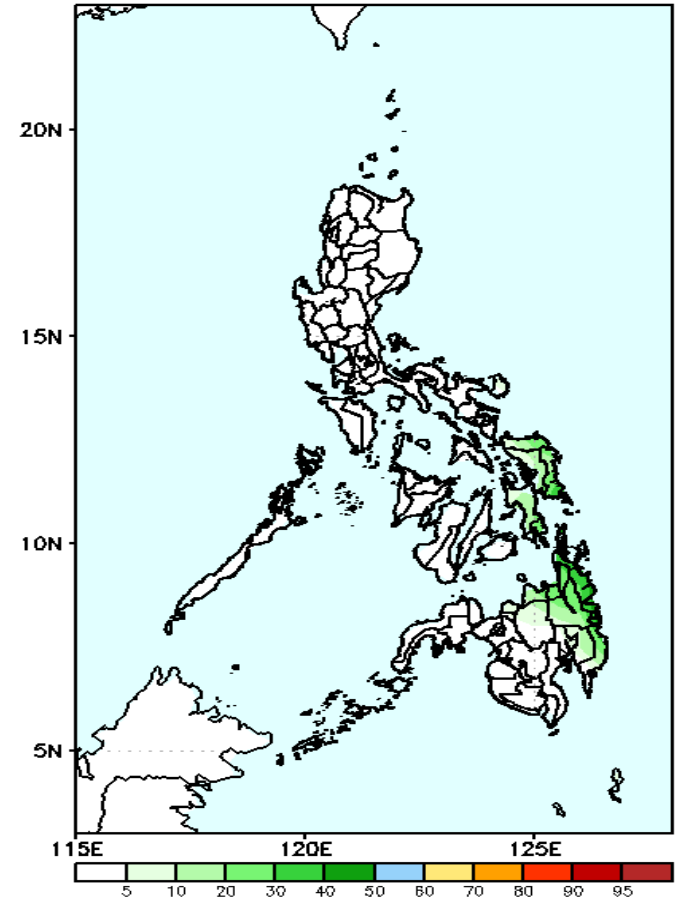
GEFS Week-1 Exceedance Prob. > 150mm
Valid: 20240126 - 20240201



Probability to Exceed 150mm

- Low to moderate over eastern Mindanao;
- Low over the rest of the country.

GEFS Week-1 Exceedance Prob. > 200mm
Valid: 20240126 - 20240201



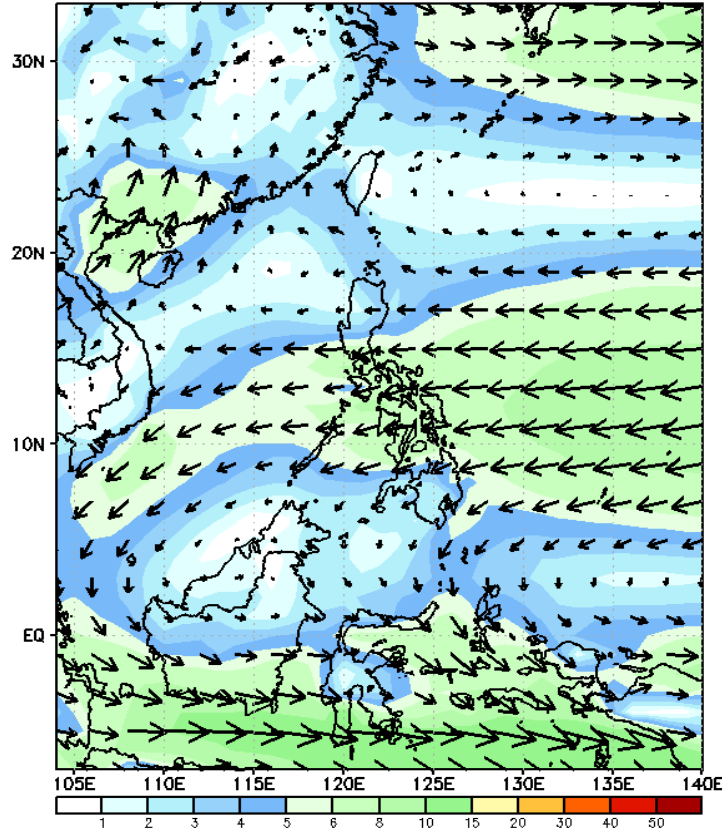
Probability to Exceed 200mm

- Low across the country.

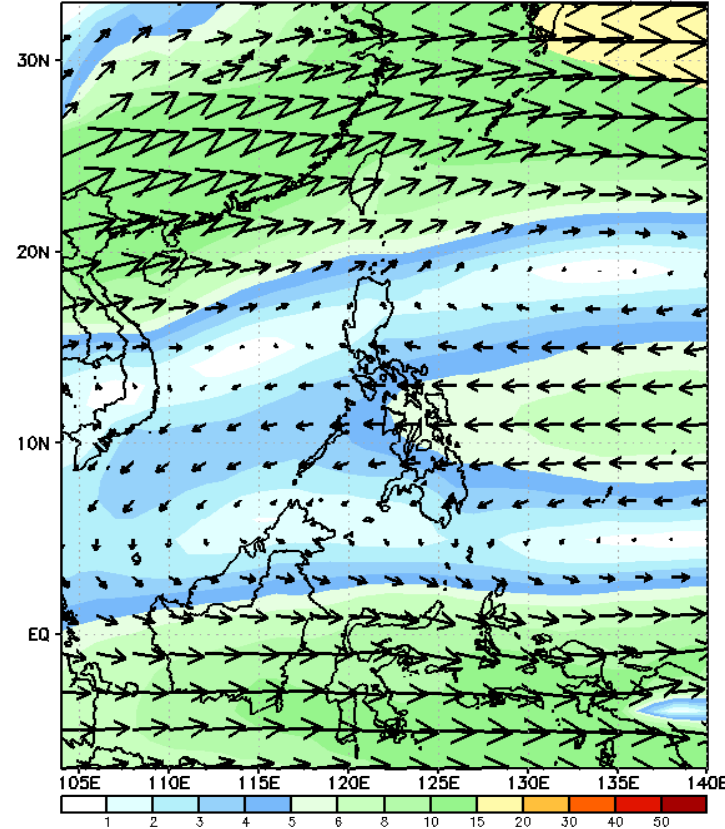
GEFS Week-2 Forecasts: Wind Forecast

Week 2: February 02-08, 2024

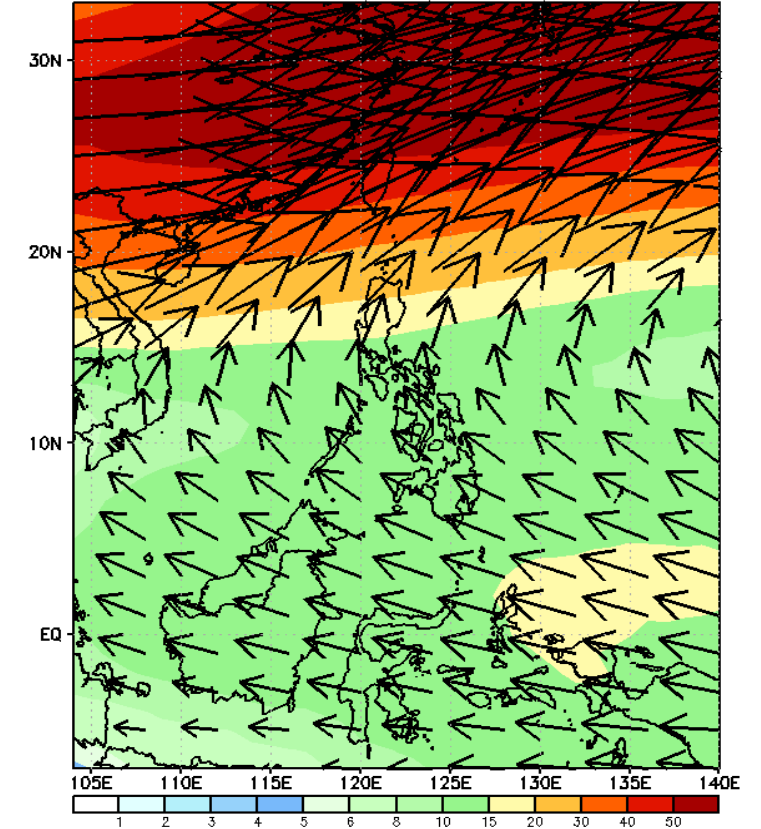
GEFS Week-2 850-hPa Wind Total
Valid: 20240202 - 20240208



GEFS Week-2 700-hPa Wind Total
Valid: 20240202 - 20240208

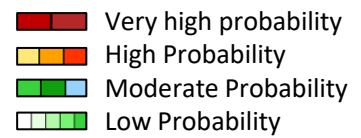


GEFS Week-2 200-hPa Wind Total
Valid: 20240202 - 20240208



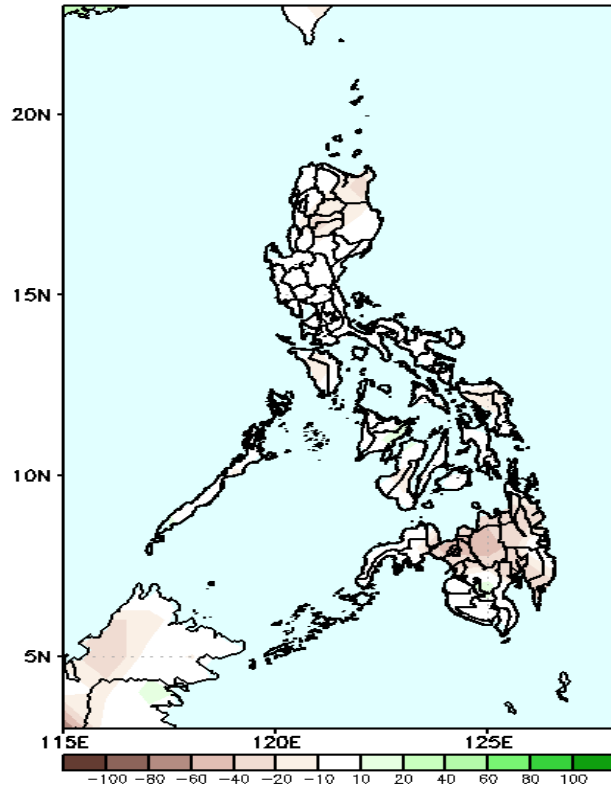
Northeast Monsoon affecting Extreme Northern Luzon; Easterlies affecting the rest of the country.

Precipitation Anomaly and Exceedance Probability > 25/50 mm



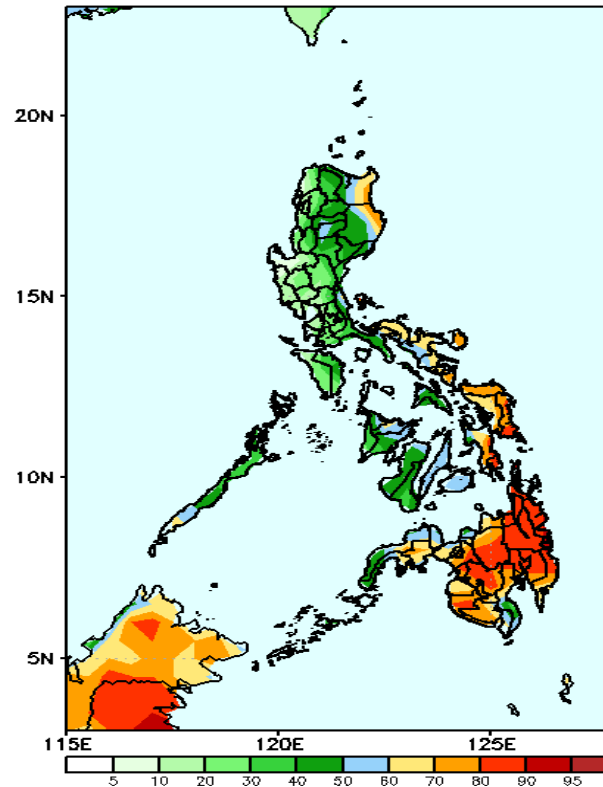
Week 2: February 02-08, 2024

GEFS Week-2 Precip Anomaly
Valid: 20240202 - 20240208



Rainfall deficit of 10-50mm in most parts of the country is expected.

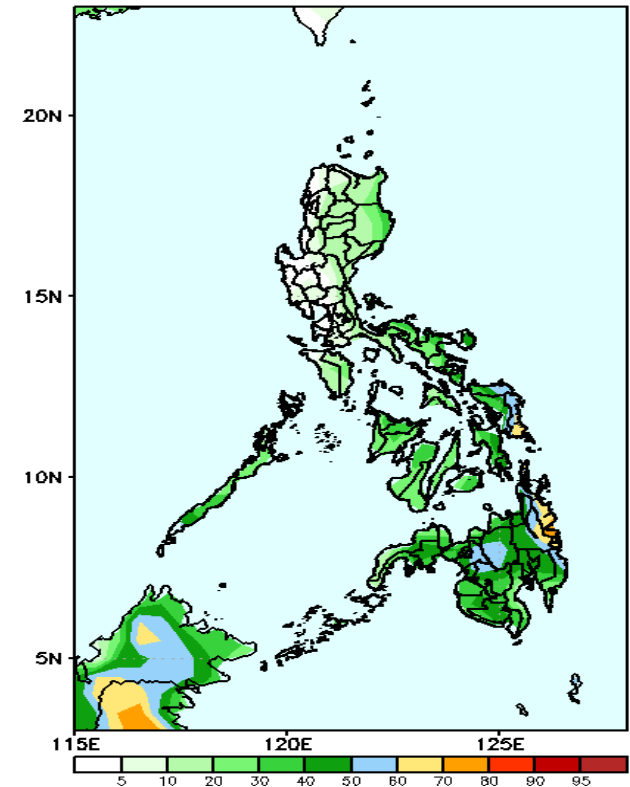
GEFS Week-2 Exceedance Prob. > 25mm
Valid: 20240202 - 20240208



Probability to Exceed 25mm

- High to very high over Eastern Mindanao;
- Moderate to high over Cagayan, Isabela, Quezon, Bicol Region, Eastern and Central Visayas and the rest of Mindanao;
- Low to moderate over the rest of Luzon and Visayas.

GEFS Week-2 Exceedance Prob. > 50mm
Valid: 20240202 - 20240208



Probability to Exceed 50mm

- Moderate to high over most of Eastern Visayas and Eastern Mindanao;
- Low to moderate over Bicol Region and the rest of Mindanao;
- Low elsewhere.

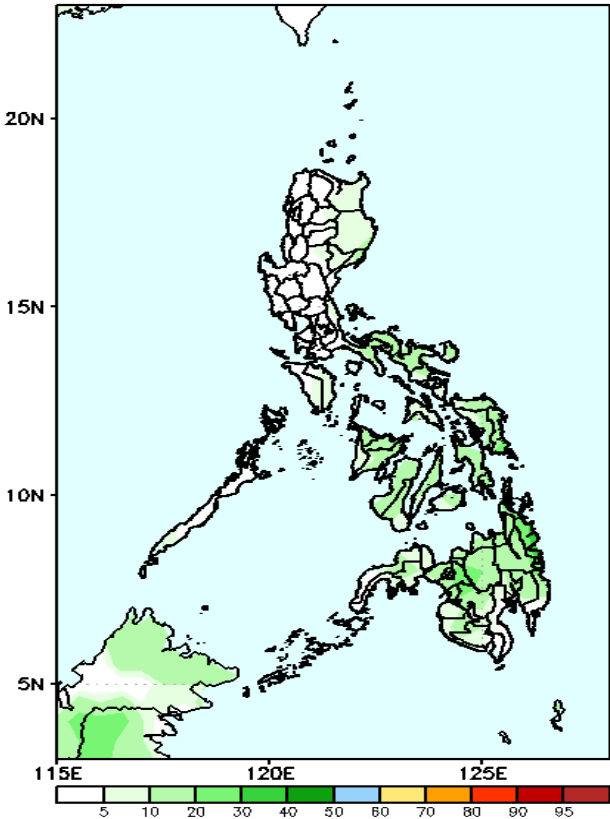


Exceedance Probability > 100/150/200 mm

Week 2: February 02-08, 2024

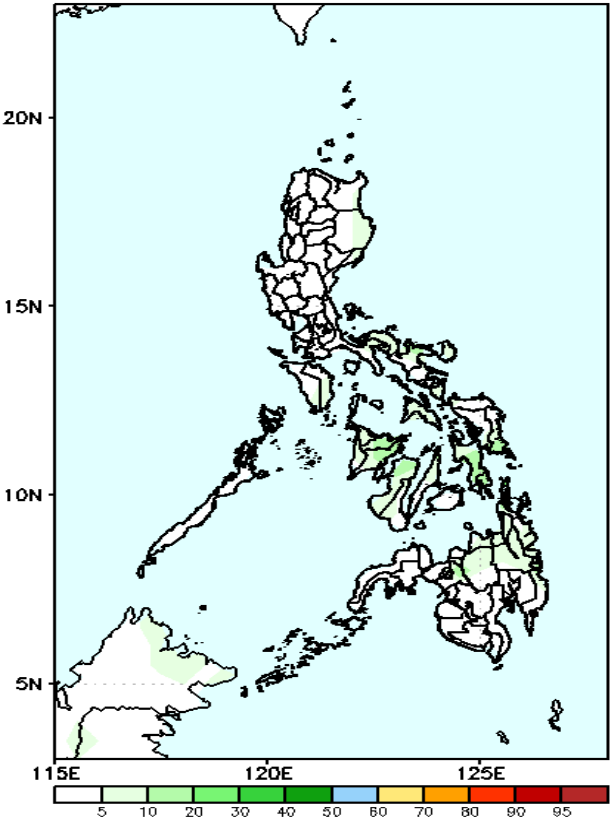
- Very high probability
- High Probability
- Moderate Probability
- Low Probability

GEFS Week-2 Exceedance Prob. > 100mm
Valid: 20240202 – 20240208



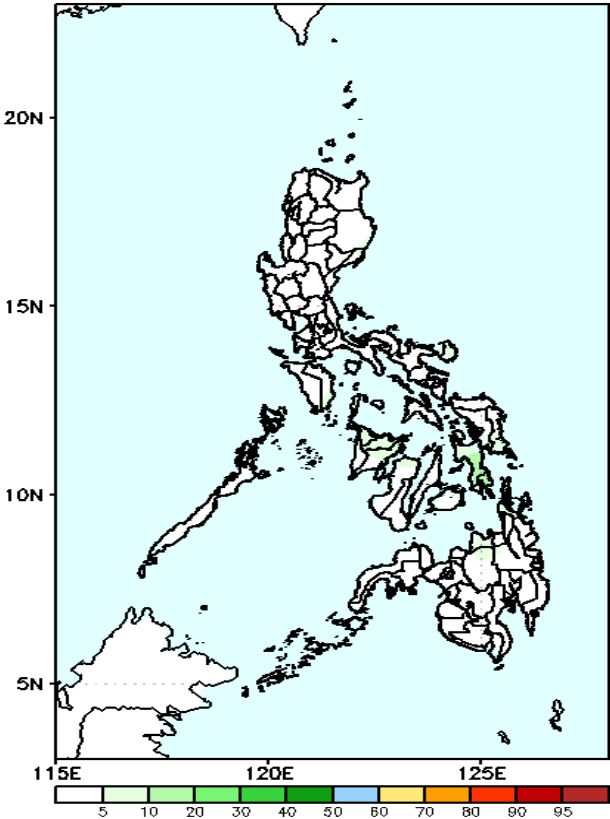
Probability to Exceed 100mm
• Low across the country.

GEFS Week-2 Exceedance Prob. > 150mm
Valid: 20240202 – 20240208



Probability to Exceed 150mm
• Low across the country.

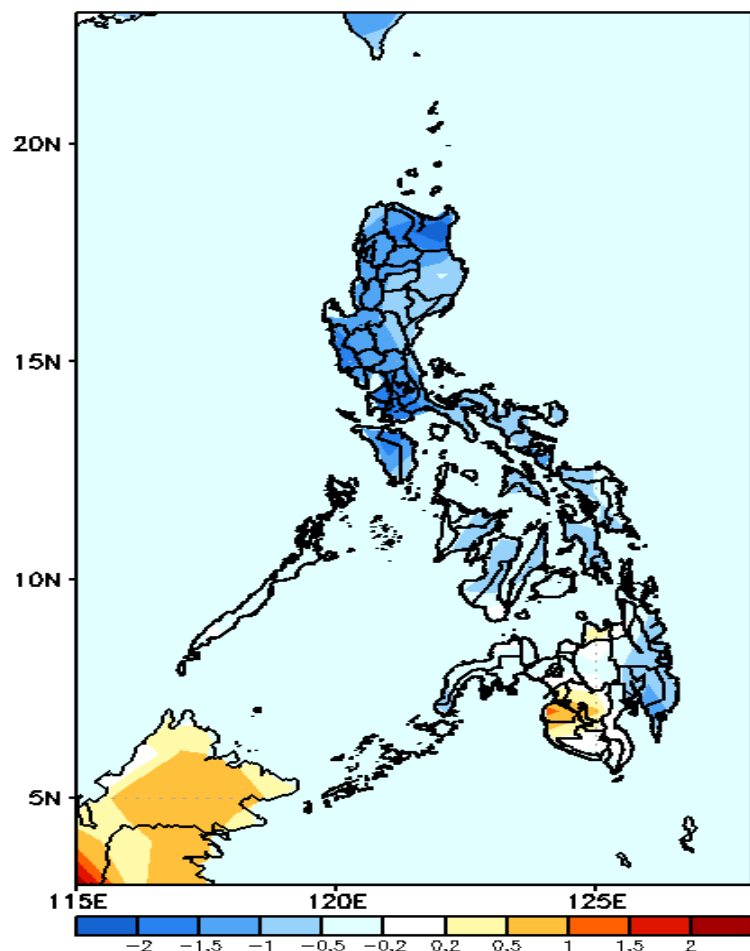
GEFS Week-2 Exceedance Prob. > 200mm
Valid: 20240202 – 20240208



Probability to Exceed 200mm
• Low across the country.

GEFS Week-1 & 2 Forecasts: T2m Anomaly

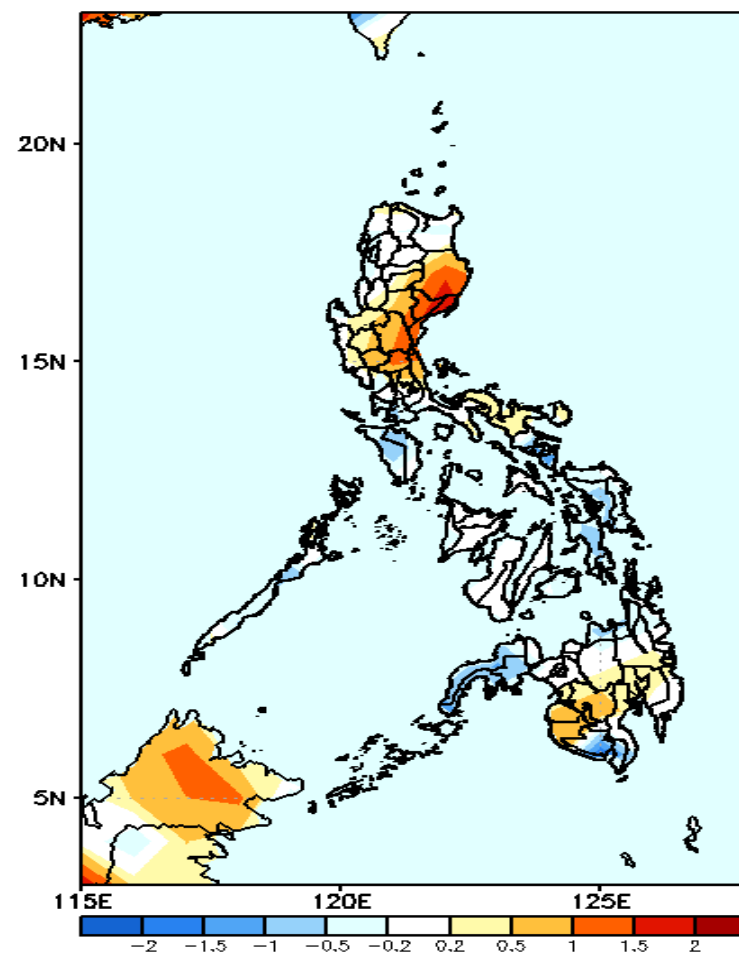
GEFS Week-1 T2m Anomaly
Valid: 20240126 - 20240201



2m Temperature Week 1: January 26- February 01, 2024

Near to cooler than average surface air temperature average will likely be experienced in most parts country except in Maguindanao where slightly warmer than average temperature is expected.

GEFS Week-2 T2m Anomaly
Valid: 20240202 - 20240208



2m Temperature Week 2: February 02-08, 2024

Near to warmer than average surface air temperature will likely be experienced in most parts of the country except in some areas in Mindoro, Sorsogon, Eastern Visayas, Zamboanga Peninsula and south Cotabato where slightly cooler than average temperature is expected.