



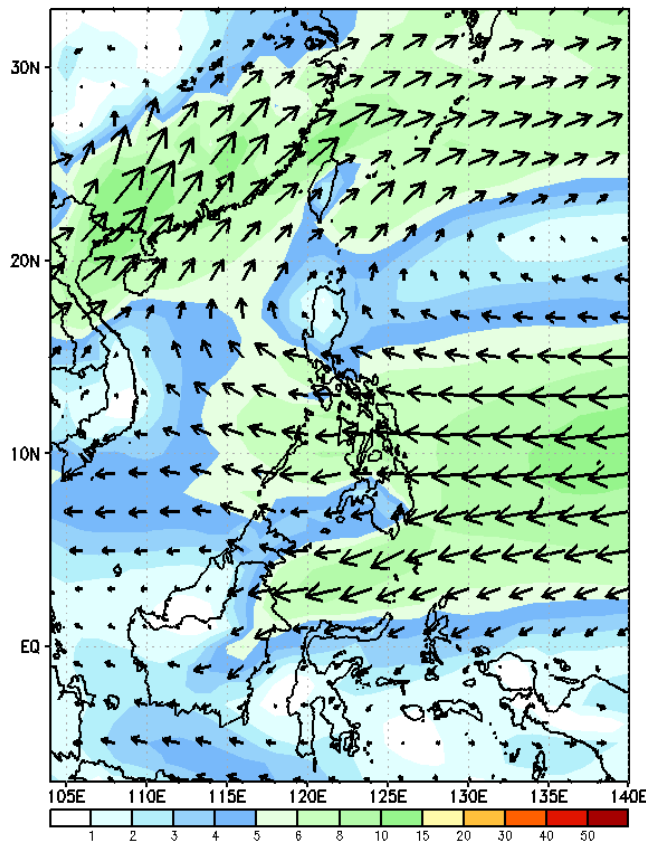
# Week 1 & Week 2 Forecast for the Philippines using GEFS Model



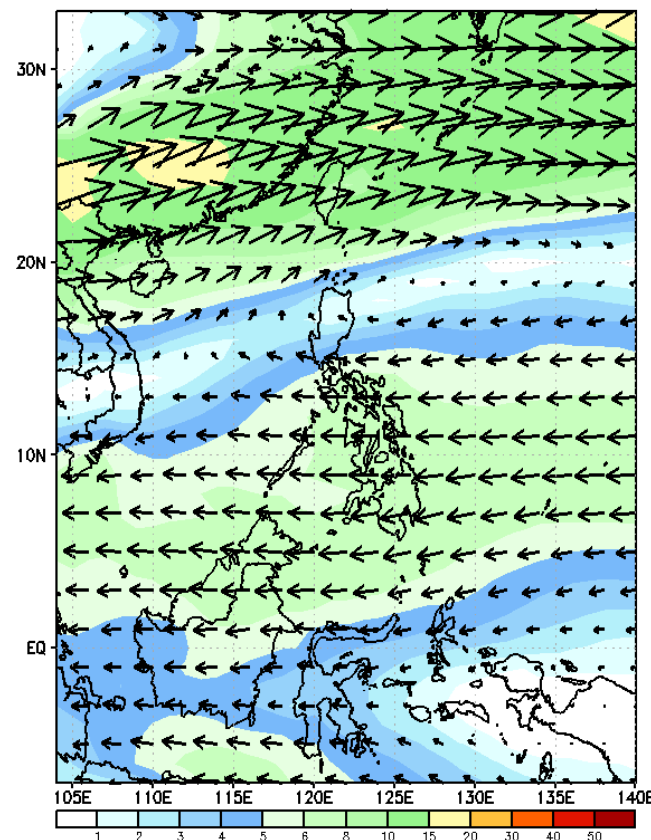
# GEFS Week-1 Forecasts: Wind Forecast

Week 1: Mar 27 – April 02, 2024

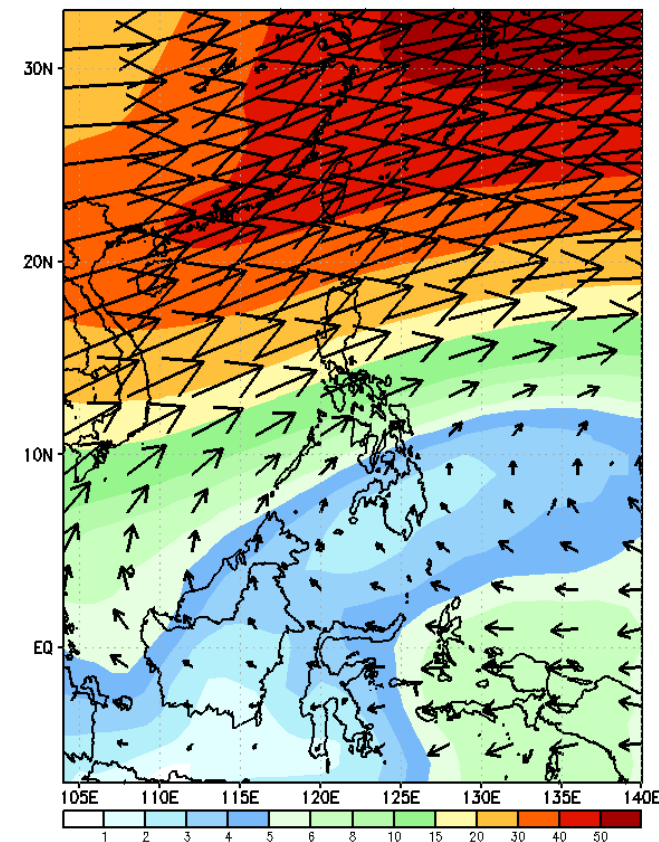
GEFS Week-1 850-hPa Wind Total  
Valid: 20240327 – 20240402



GEFS Week-1 700-hPa Wind Total  
Valid: 20240327 – 20240402



GEFS Week-1 200-hPa Wind Total  
Valid: 20240327 – 20240402



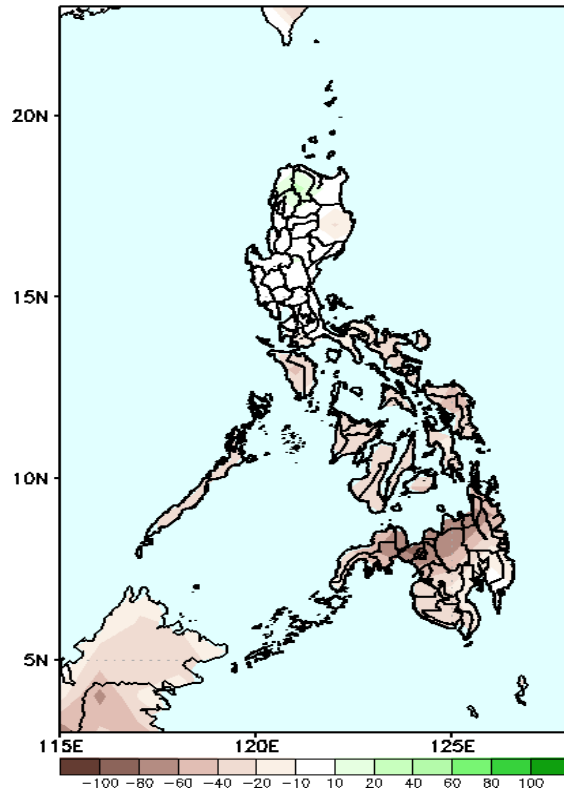
Easterlies continuous to affect most parts of the country. Expect dry and warm days during the forecast period.

# Precipitation Anomaly and Exceedance Probability > 25/50 mm



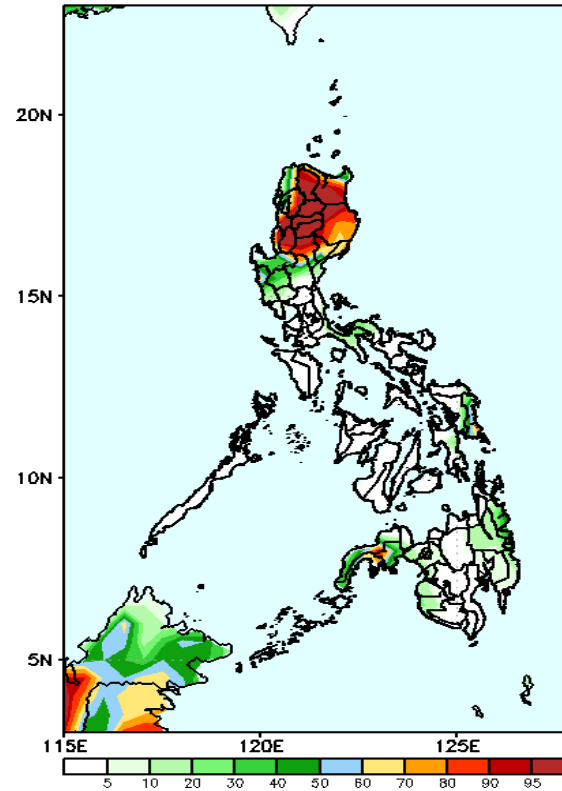
Week 1: Mar 27 – April 02, 2024

GEFS Week-1 Precip Anomaly  
Valid: 20240327 – 20240402



Rainfall deficit of 10-40mm in most parts of Luzon, and Visayas; 40-80mm in Mindanao while 10-30mm increase of rainfall in Ilocos Norte, Apayao and Abra.

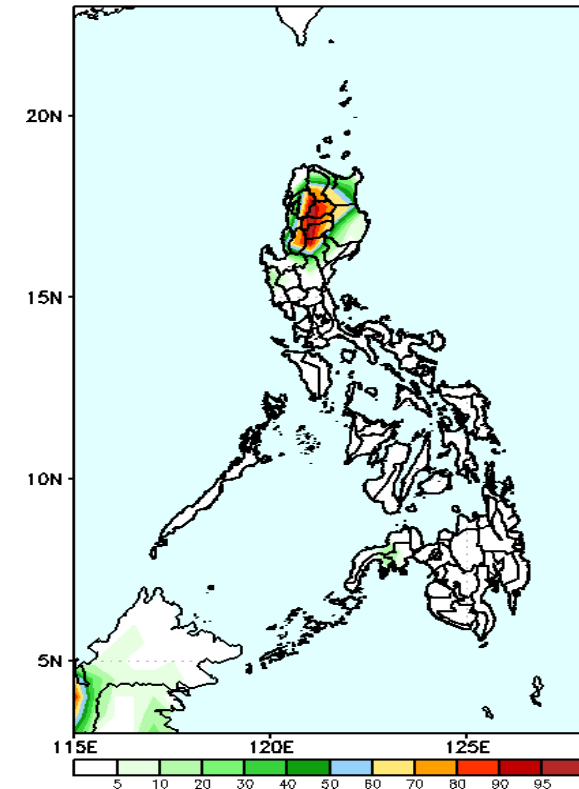
GEFS Week-1 Exceedance Prob. > 25mm  
Valid: 20240327 – 20240402



## Probability to Exceed 25mm

- High to very high over most parts of Northern Luzon;
- Moderate to high over Eastern Samar and some portions of Zamboanga Peninsula;
- Low to moderate over Zambales;
- Low over the rest of the country.

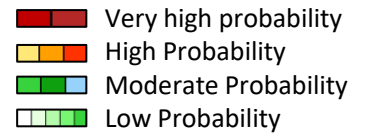
GEFS Week-1 Exceedance Prob. > 50mm  
Valid: 20240327 – 20240402



## Probability to Exceed 50mm

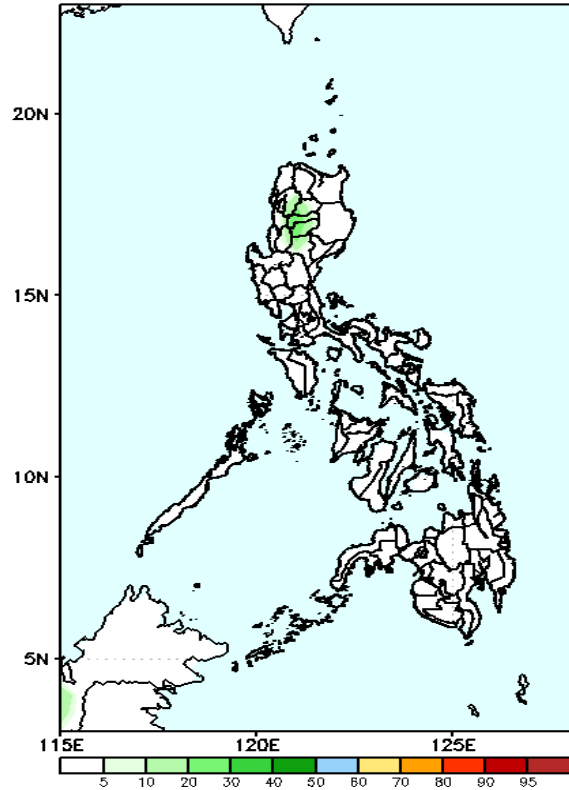
- Moderate to high over most parts of CAR;
- Low to moderate over the rest of Northern Luzon;
- Low over the rest of the country.

# Exceedance Probability > 100/150/200 mm



Week 1: Mar 27 – April 02, 2024

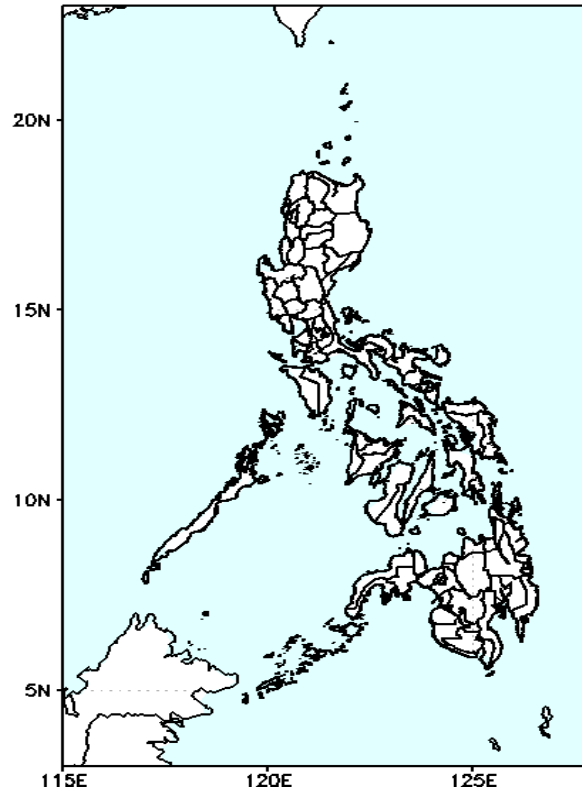
GEFS Week-1 Exceedance Prob. > 100mm  
Valid: 20240327 – 20240402



**Probability to Exceed 100mm**

- Low across the country.

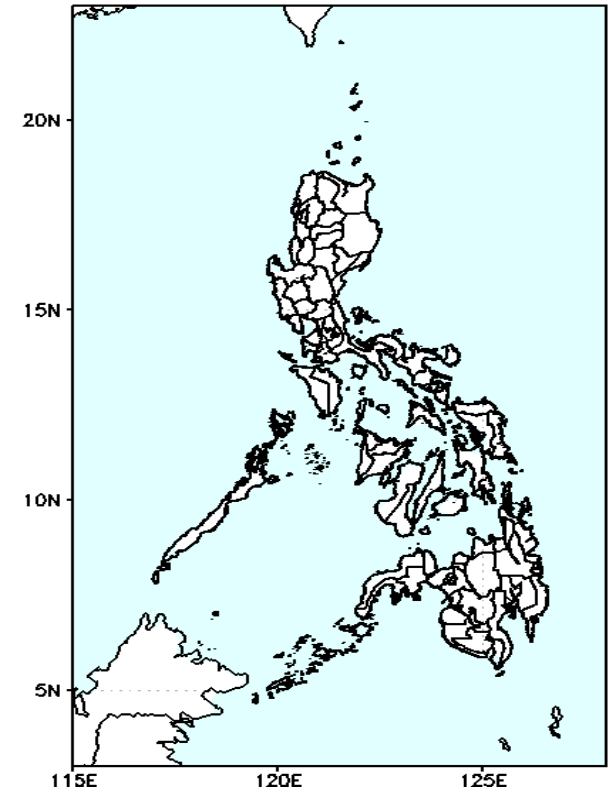
GEFS Week-1 Exceedance Prob. > 150mm  
Valid: 20240327 – 20240402



**Probability to Exceed 150mm**

- Low across the country.

GEFS Week-1 Exceedance Prob. > 200mm  
Valid: 20240327 – 20240402



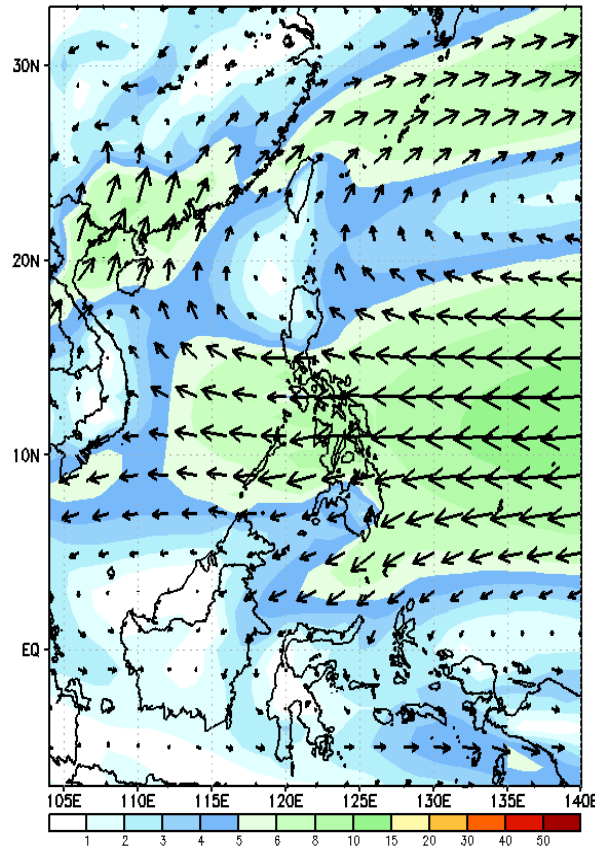
**Probability to Exceed 200mm**

- Low across the country.

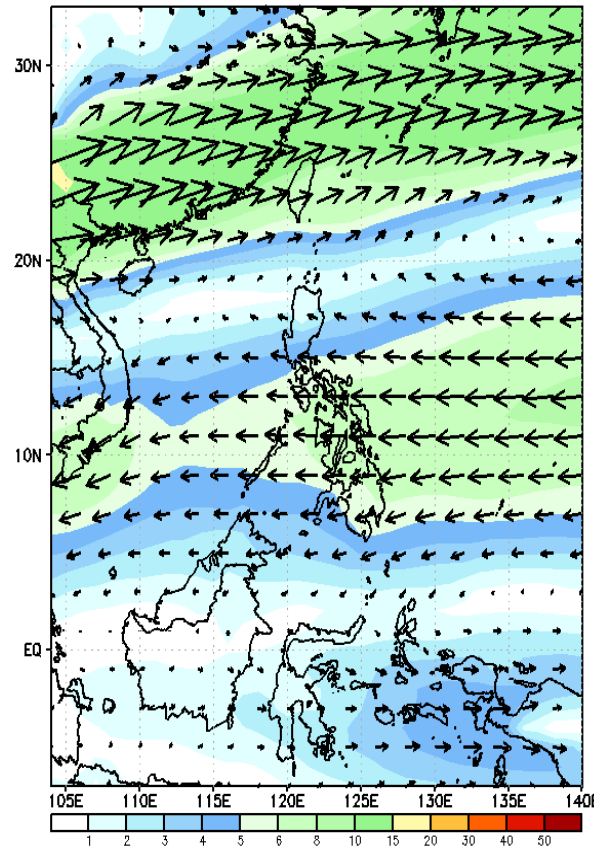
# GEFS Week-2 Forecasts: Wind Forecast

Week 2: Apr 01-07, 2024

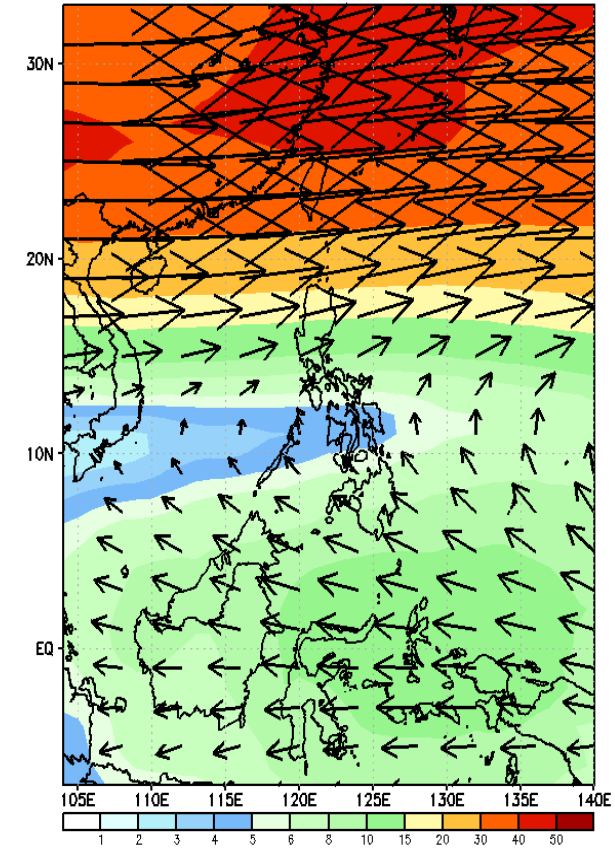
GEFS Week-2 850-hPa Wind Total  
Valid: 20240403 - 20240409



GEFS Week-2 700-hPa Wind Total  
Valid: 20240403 - 20240409



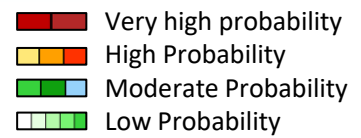
GEFS Week-2 200-hPa Wind Total  
Valid: 20240403 - 20240409



Easterlies will likely prevail in most parts of the country. Expect dry and warm days during the forecast period.

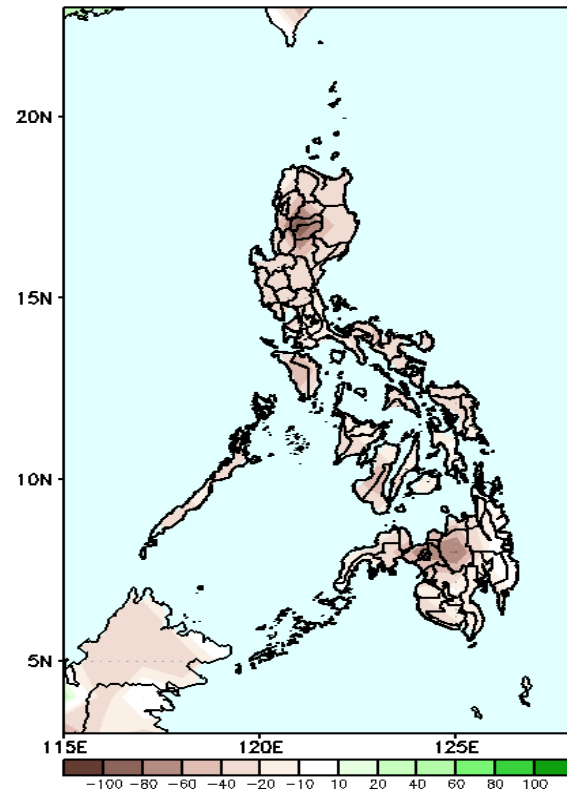


# Precipitation Anomaly and Exceedance Probability > 25/50 mm



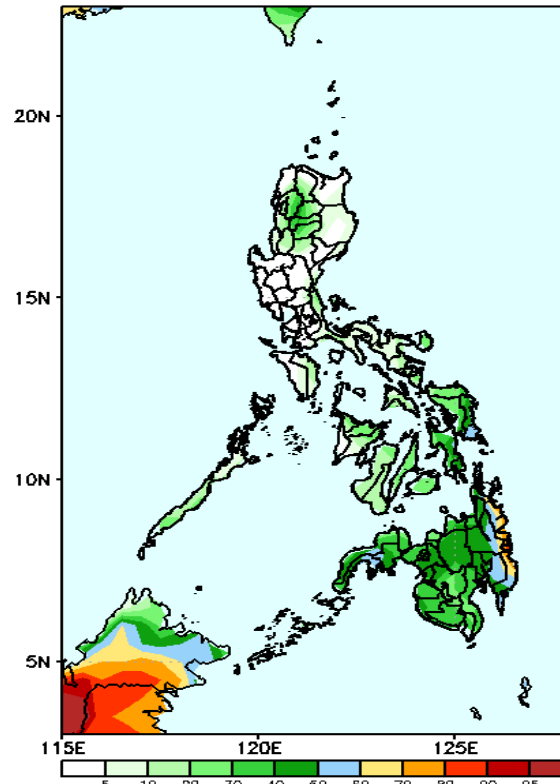
Week 2: Apr 01-07, 2024

GEFS Week-2 Precip Anomaly  
Valid: 20240403 - 20240409



Rainfall deficit of 40-80mm over most parts of the country.

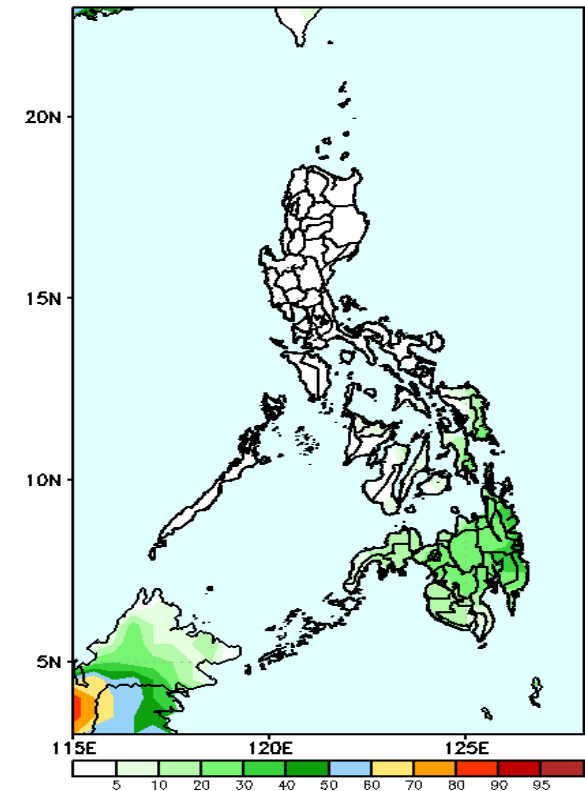
GEFS Week-2 Exceedance Prob. > 25mm  
Valid: 20240403 - 20240409



## Probability to Exceed 25mm

- Moderate to high over most parts of Mindanao;
- Low to moderate over Eastern Visayas;
- Low over the rest of the country.

GEFS Week-2 Exceedance Prob. > 50mm  
Valid: 20240403 - 20240409



## Probability to Exceed 50mm

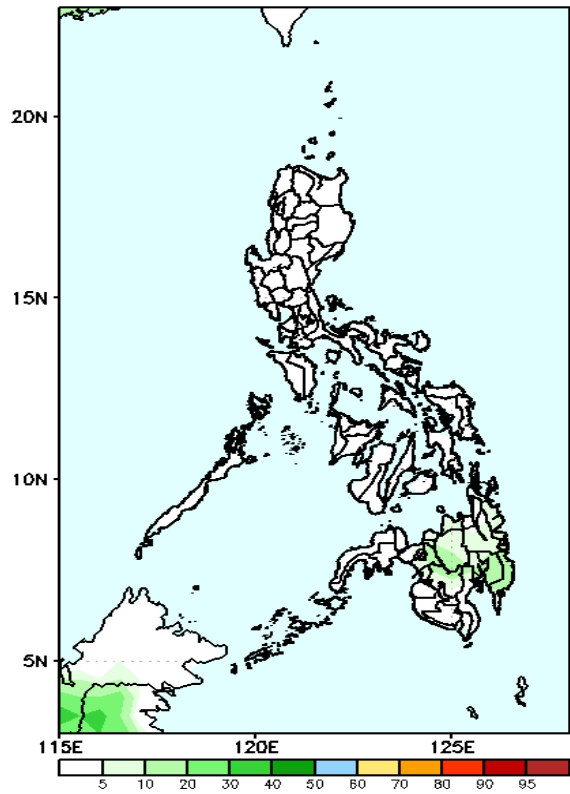
- Low across the country.

# Exceedance Probability > 100/150/200 mm

Week 2: Apr 01-07, 2024

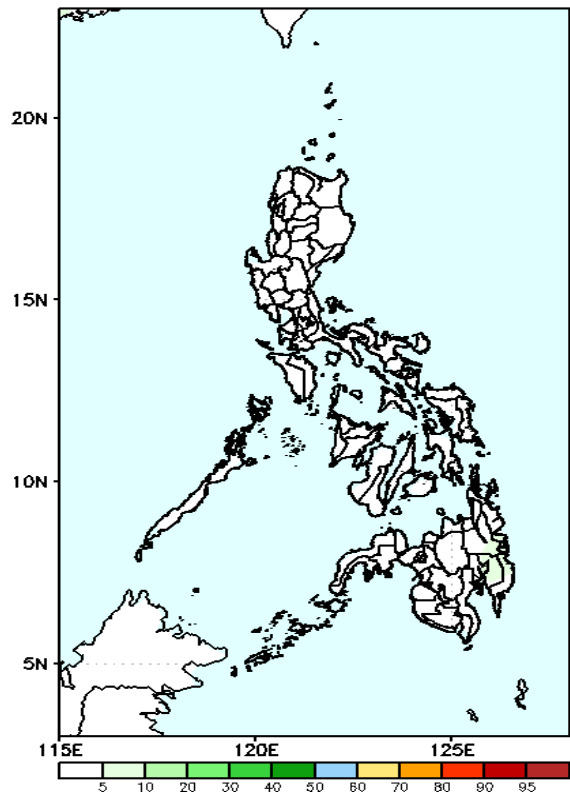
- Very high probability
- High Probability
- Moderate Probability
- Low Probability

GEFS Week-2 Exceedance Prob. > 100mm  
Valid: 20240403 – 20240409



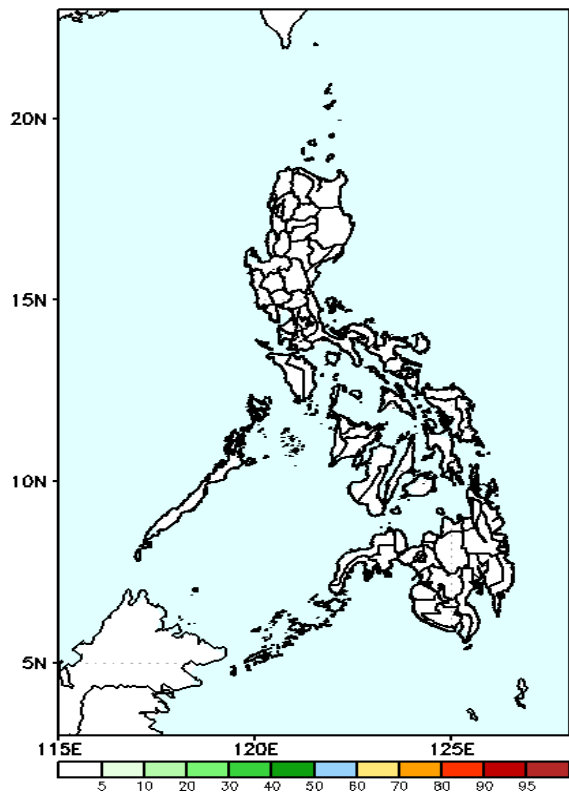
**Probability to Exceed 100mm**  
• Low across the country.

GEFS Week-2 Exceedance Prob. > 150mm  
Valid: 20240403 – 20240409



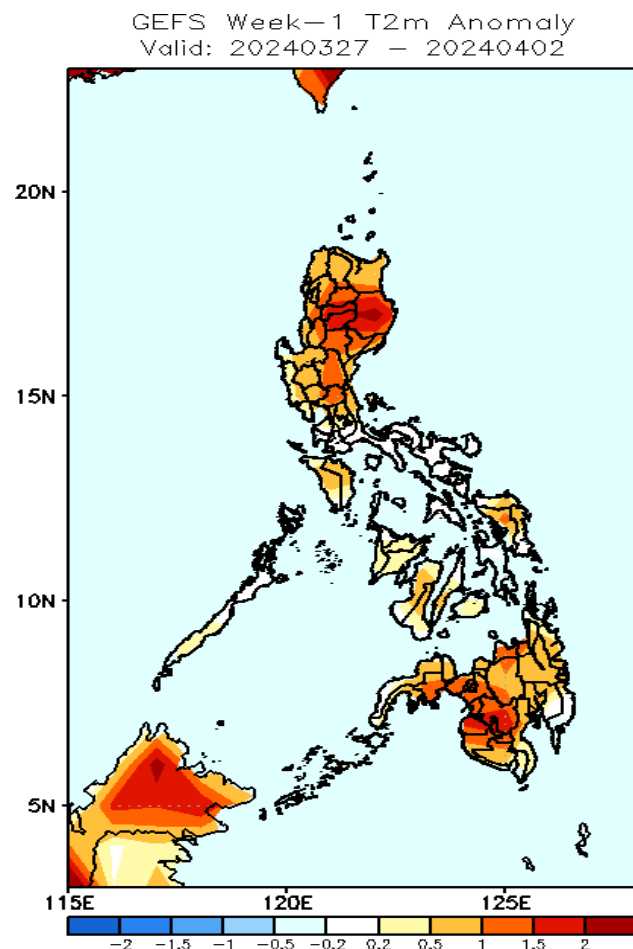
**Probability to Exceed 150mm**  
• Low across the country.

GEFS Week-2 Exceedance Prob. > 200mm  
Valid: 20240403 – 20240409



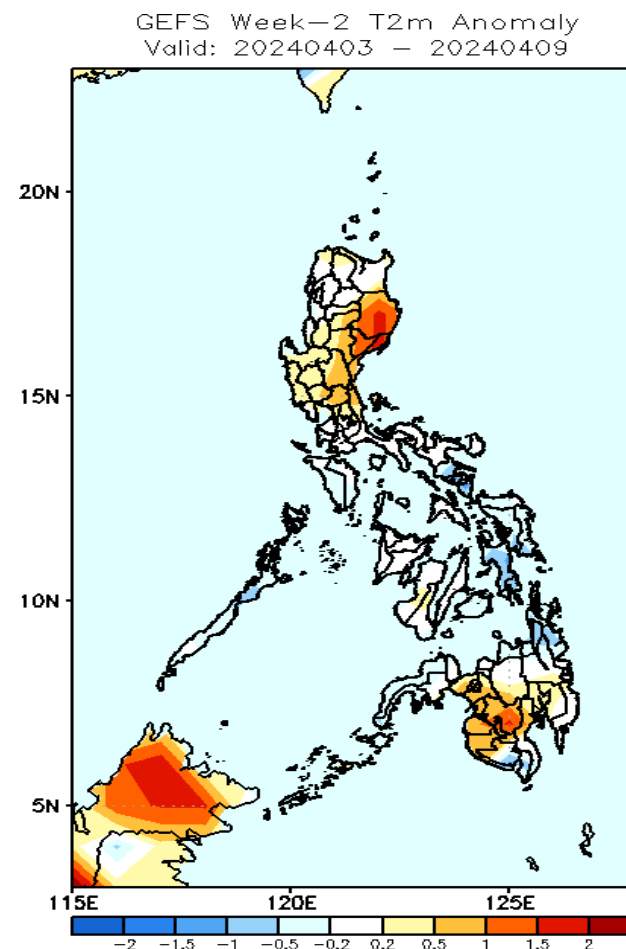
**Probability to Exceed 200mm**  
• Low across the country.

# GEFS Week-1 & 2 Forecasts: T2m Anomaly



## 2m Temperature Week 1: Mar 27 – April 02, 2024

Near to warmer than average surface air temperature will likely be experienced in most parts of the country.



## 2m Temperature Week 2: Apr 03-09, 2024

Near to warmer than average surface air temperature will likely be experienced in most parts Luzon and Mindanao while near to slightly cooler in Visayas, Sorsogon, Palawan, Eastern Visayas and Surigao provinces.