



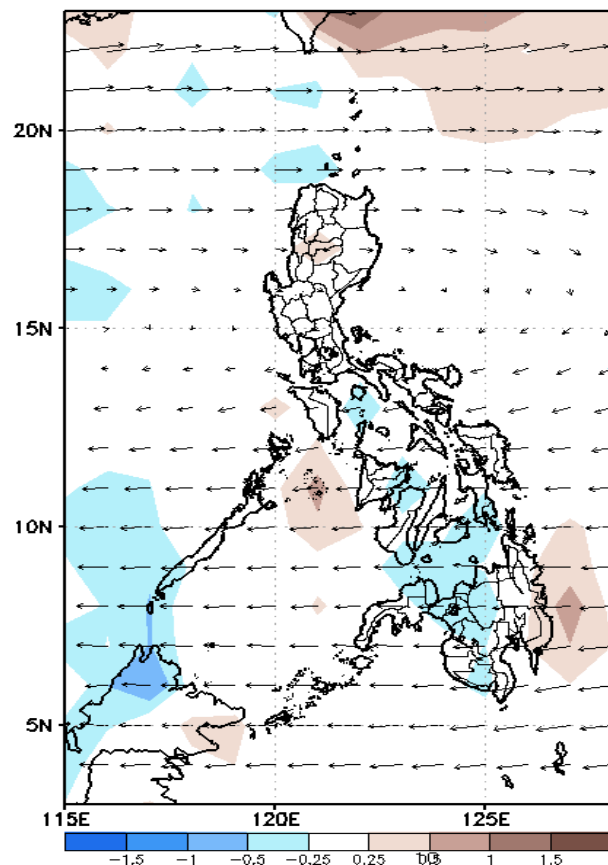
Week 1 & Week 2 Forecast for the Philippines using GEFS Model



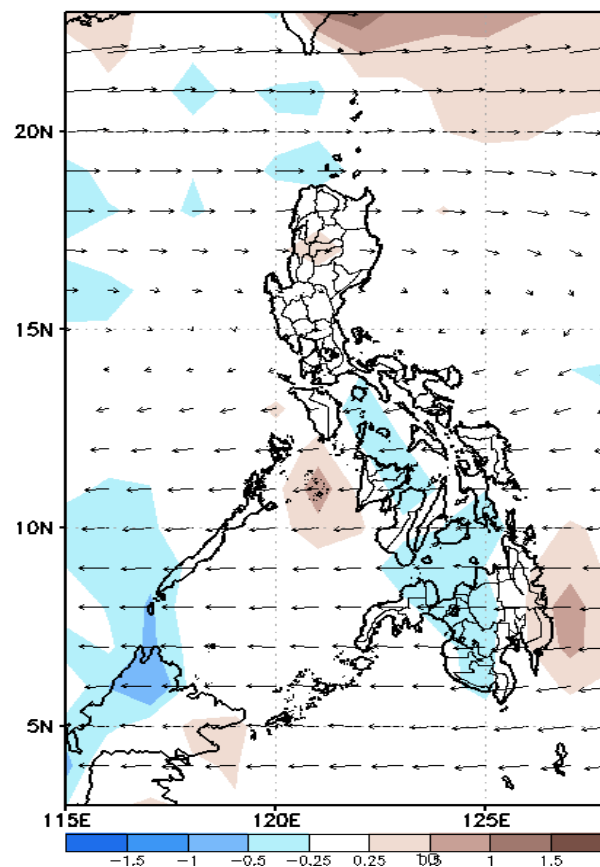
GEFS Week-1 Forecasts: Wind Forecast

Week 1: February 28 - March 05, 2024

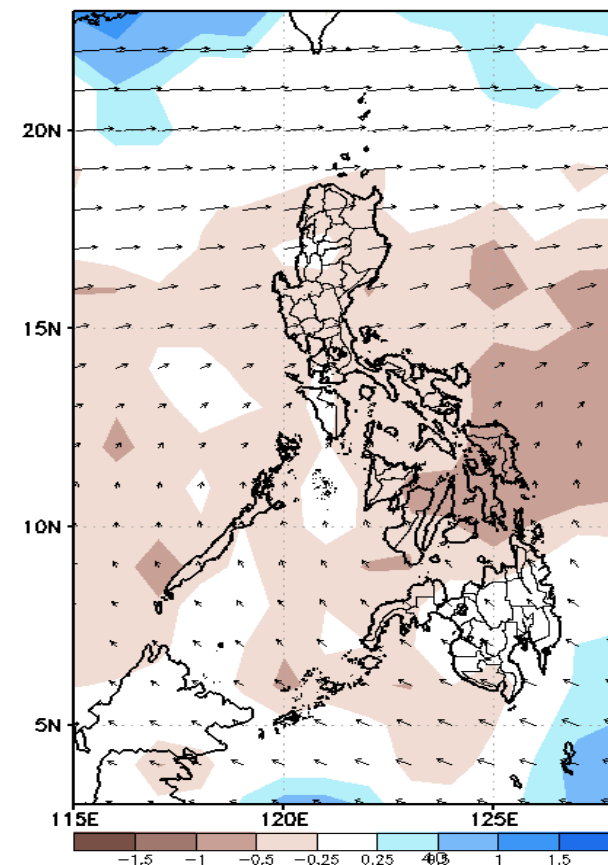
GEFS Week-1 850-hPa Divergence and Wind Anomaly
Valid: 20240228 - 20240305



GEFS Week-1 700-hPa Divergence and Wind Anomaly
Valid: 20240228 - 20240305

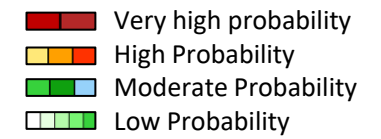


GEFS Week-1 200-hPa Divergence and Wind Anomaly
Valid: 20240228 - 20240305



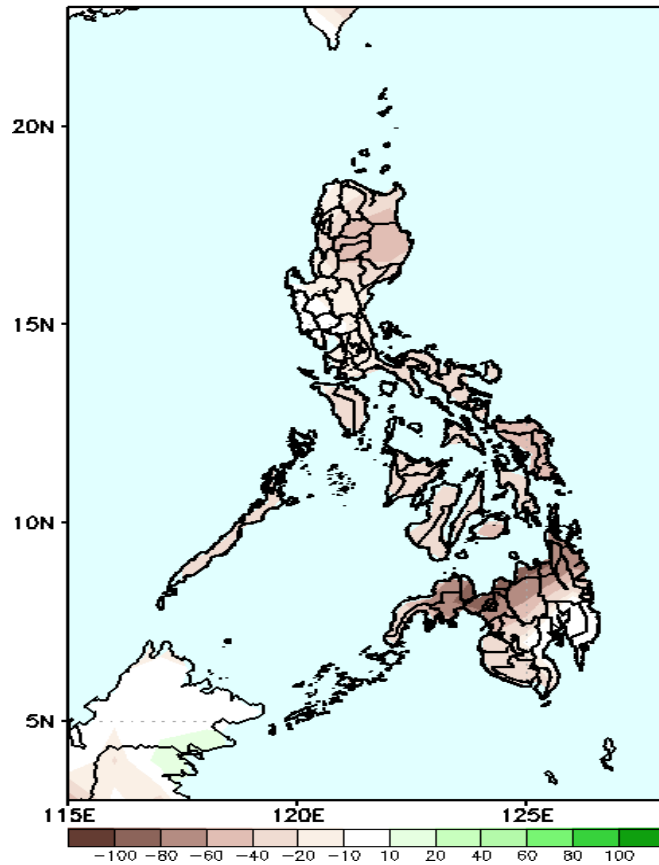
Easterlies will likely affect most parts of the country.

Precipitation Anomaly and Exceedance Probability > 25/50 mm



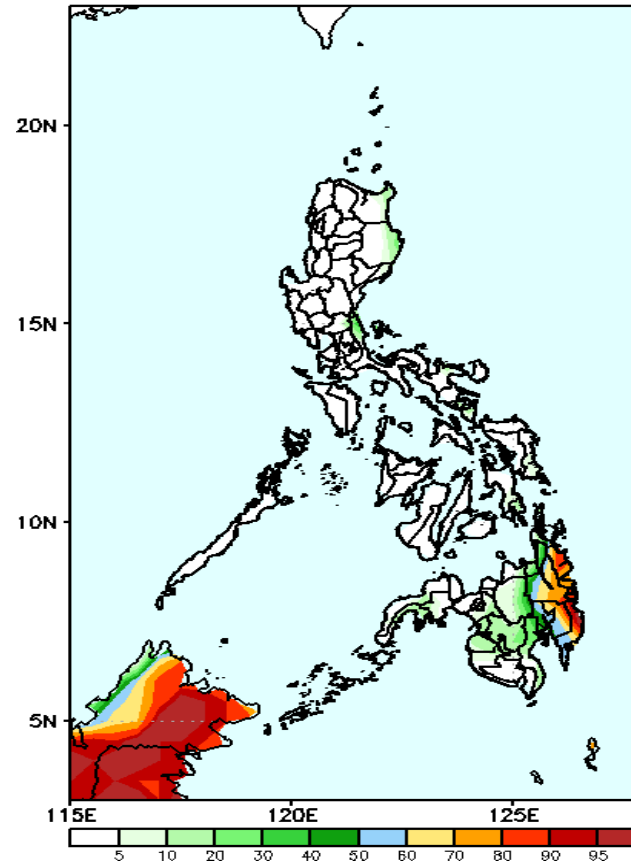
Week 1: February 28 - March 05, 2024

GEFS Week-1 Precip Anomaly
Valid: 20240228 - 20240305



Rainfall deficit of 20-80mm in most parts of the country is expected.

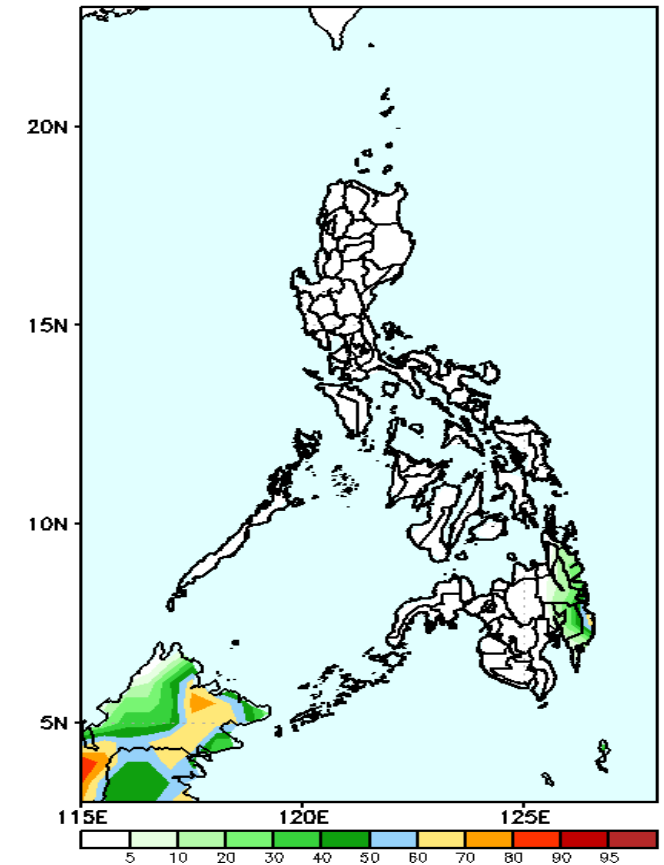
GEFS Week-1 Exceedance Prob. > 25mm
Valid: 20240228 - 20240305



Probability to Exceed 25mm

- Moderate to high over Eastern Mindanao;
- Low over the rest of the country.

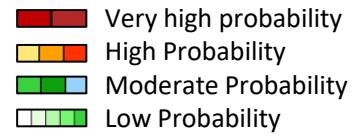
GEFS Week-1 Exceedance Prob. > 50mm
Valid: 20240228 - 20240305



Probability to Exceed 50mm

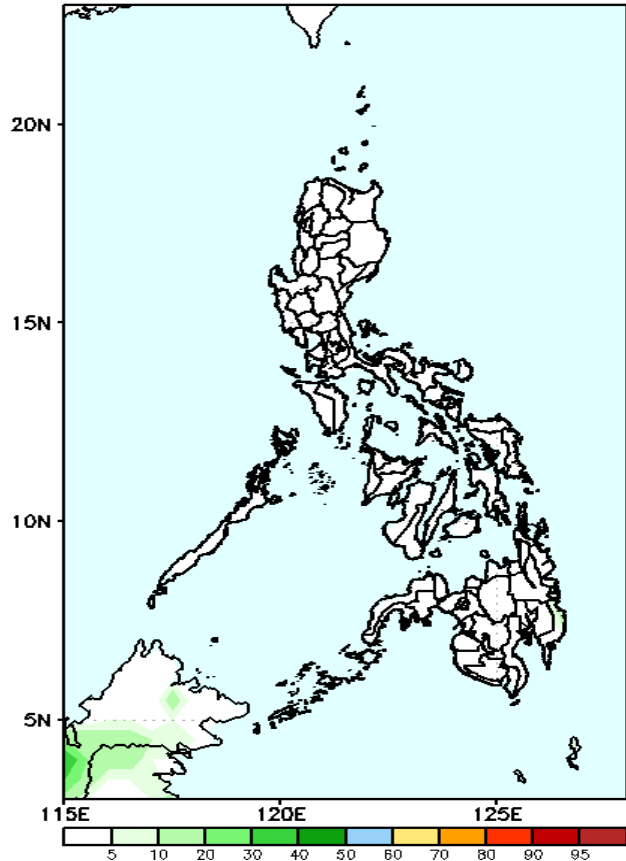
- Low across the country.

Exceedance Probability > 100/150/200 mm



Week 1: February 28 - March 05, 2024

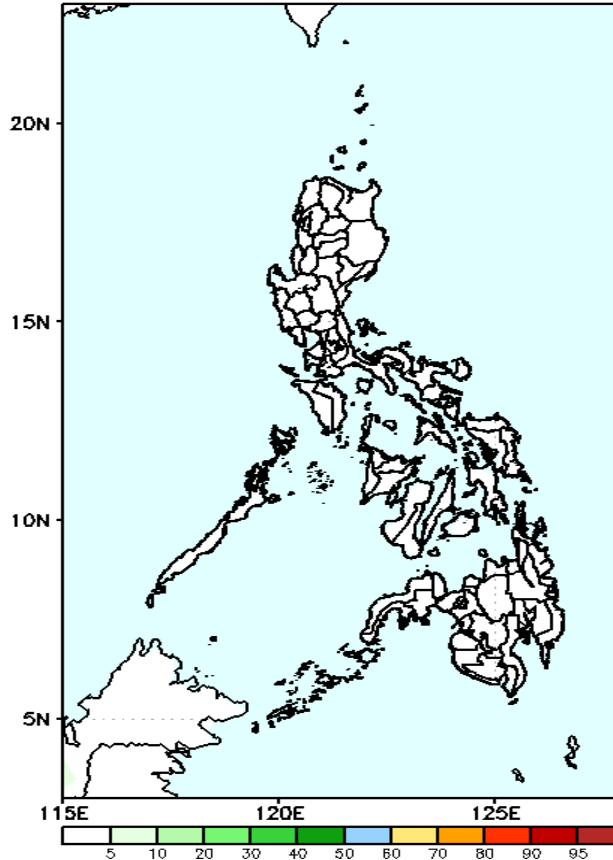
GEFS Week-1 Exceedance Prob. > 100mm
Valid: 20240228 - 20240305



Probability to Exceed 100mm

- Low across the country.

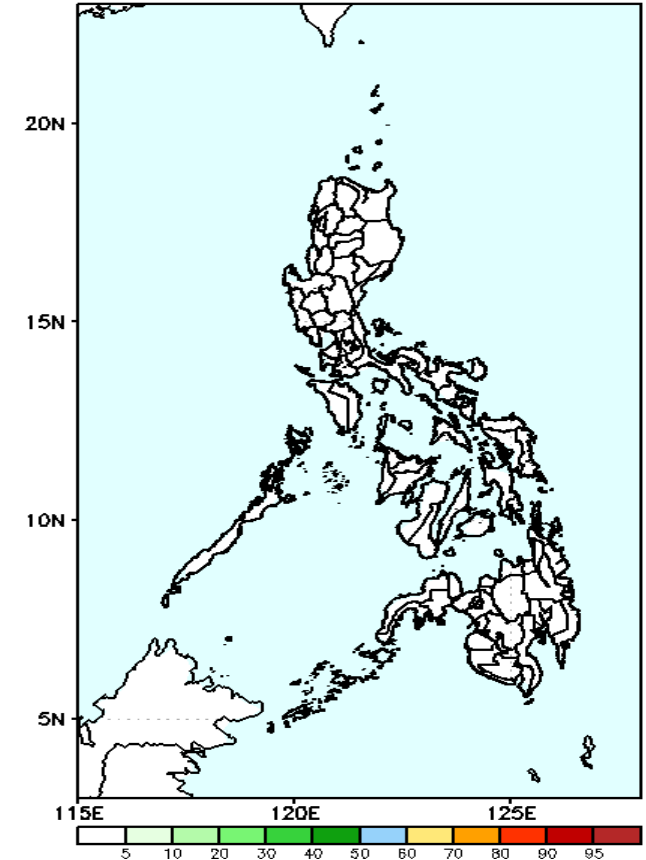
GEFS Week-1 Exceedance Prob. > 150mm
Valid: 20240228 - 20240305



Probability to Exceed 150mm

- Low across the country.

GEFS Week-1 Exceedance Prob. > 200mm
Valid: 20240228 - 20240305



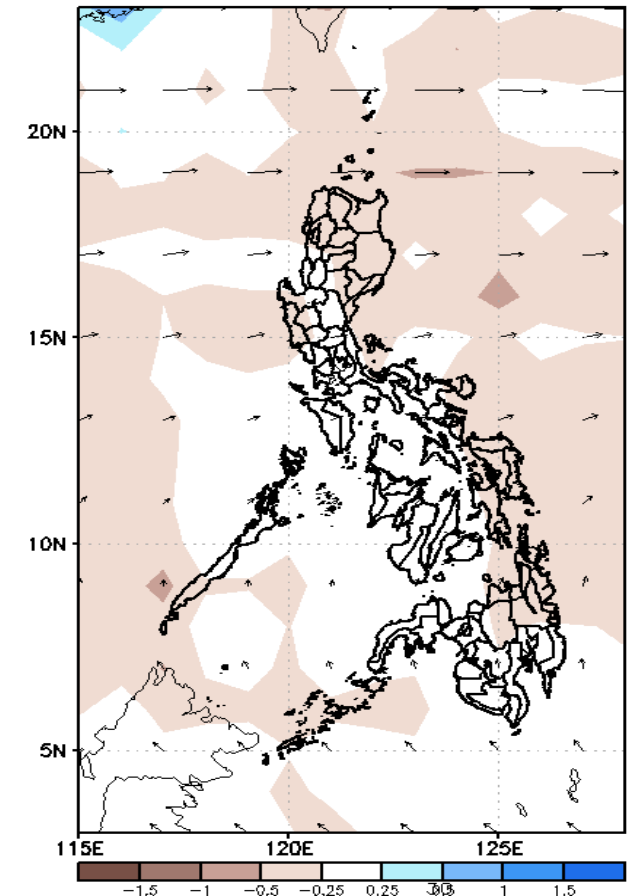
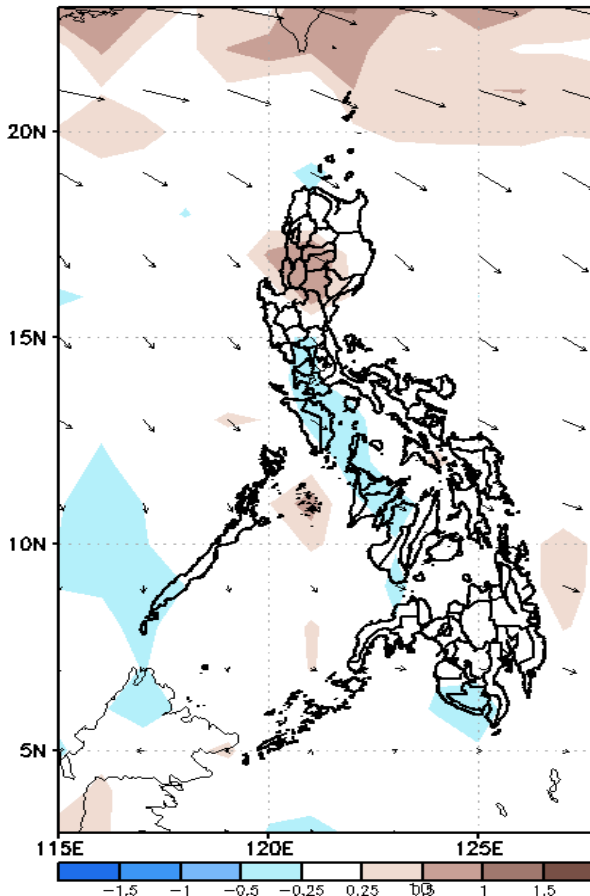
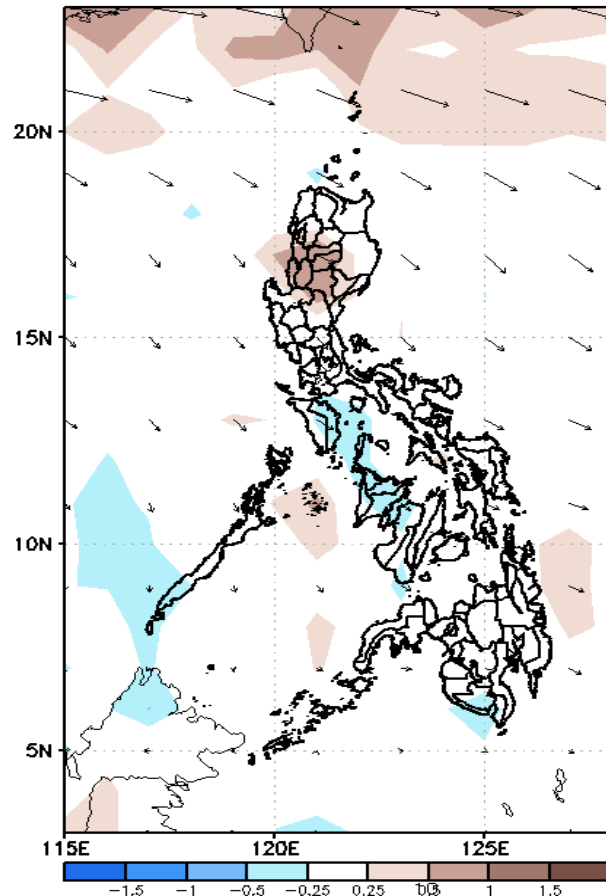
Probability to Exceed 200mm

- Low across the country.

GEFS Week-2 Forecasts: Wind Forecast

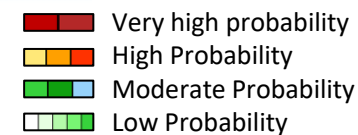
Week 2: Mar 06 – 12, 2024

GEFS Week-2 850-hPa Divergence and Wind Anomaly GEFS Week-2 700-hPa Divergence and Wind Anomaly GEFS week-2 200-hPa Divergence and Wind Anomaly
Valid: 20240306 – 20240312 Valid: 20240306 – 20240312 Valid: 20240306 – 20240312



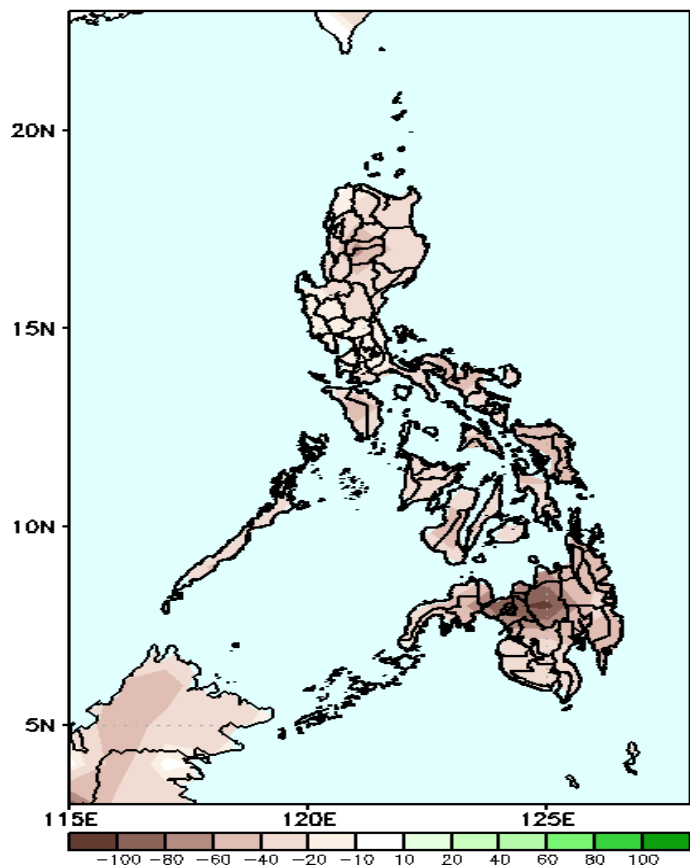
Northeast Monsoon will likely affect Extreme Northern Luzon; Easterlies for the rest of the country.

Precipitation Anomaly and Exceedance Probability > 25/50 mm



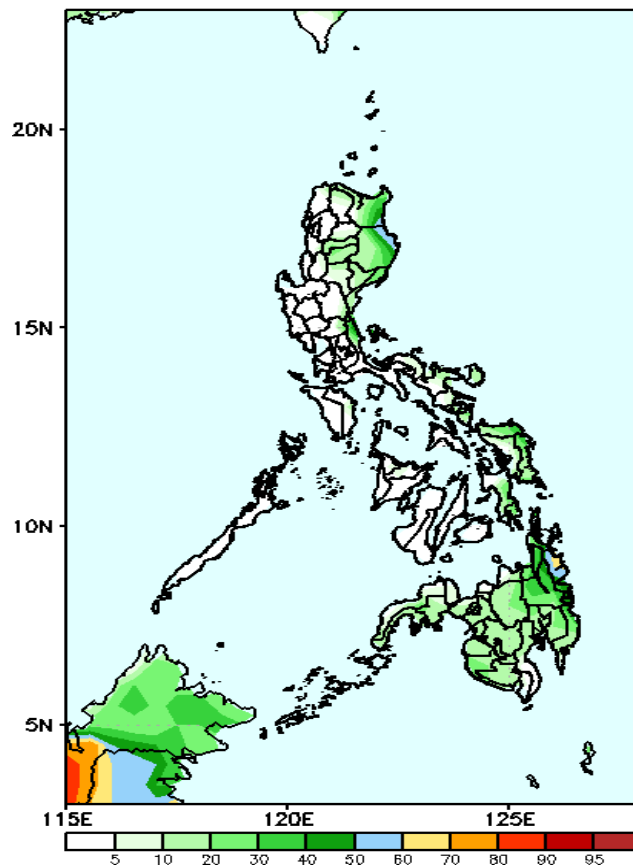
Week 2: Mar 06 – 12, 2024

GEFS Week-2 Precip Anomaly
Valid: 20240306 – 20240312



Rainfall deficit of 40-80mm in most parts of the country is likely.

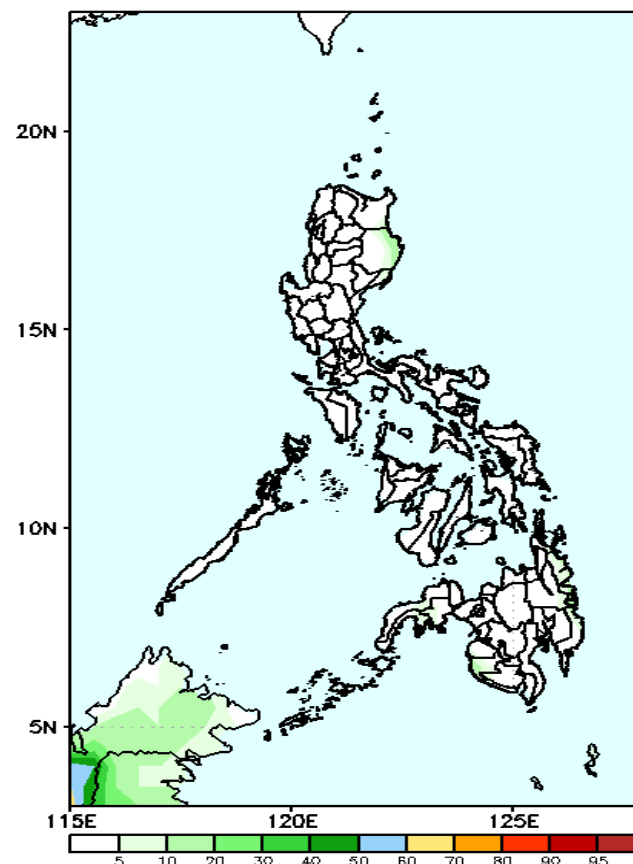
GEFS Week-2 Exceedance Prob. > 25mm
Valid: 20240306 – 20240312



Probability to Exceed 25mm

- Moderate to high over Surigao del Sur;
- Low to moderate over the eastern section of Luzon and the rest of Mindanao;
- Low over the rest of the country.

GEFS Week-2 Exceedance Prob. > 50mm
Valid: 20240306 – 20240312



Probability to Exceed 50mm

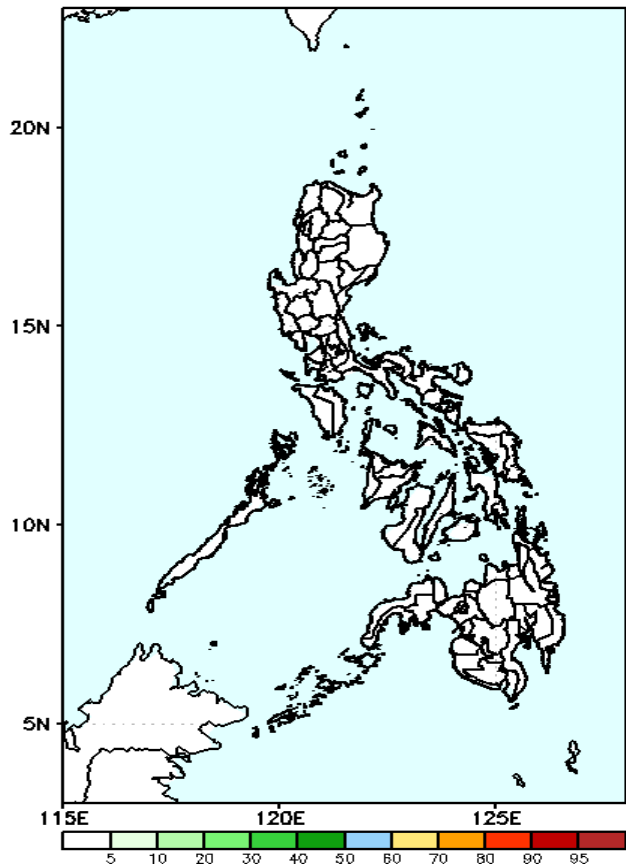
- Low across the country.

Exceedance Probability > 100/150/200 mm

Week 2: Mar 06 – 12, 2024

- Very high probability
- High Probability
- Moderate Probability
- Low Probability

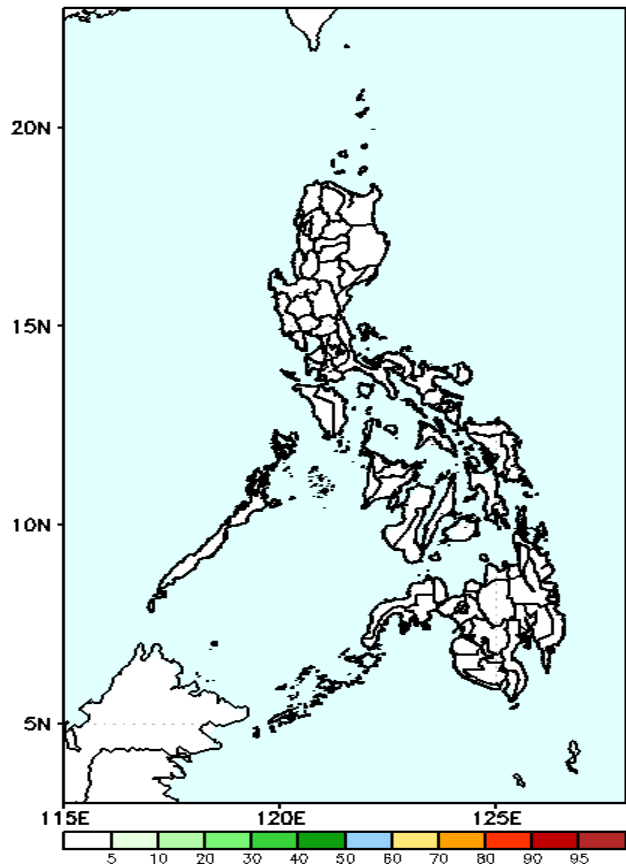
GEFS Week-2 Exceedance Prob. > 200mm
Valid: 20240306 – 20240312



Probability to Exceed 100mm

- Low across the country.

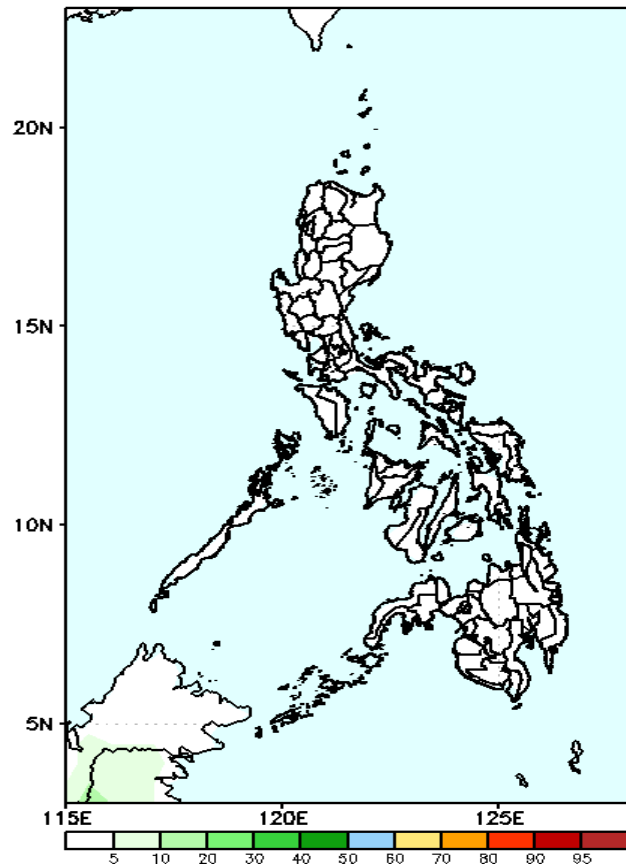
GEFS Week-2 Exceedance Prob. > 150mm
Valid: 20240306 – 20240312



Probability to Exceed 150mm

- Low across the country.

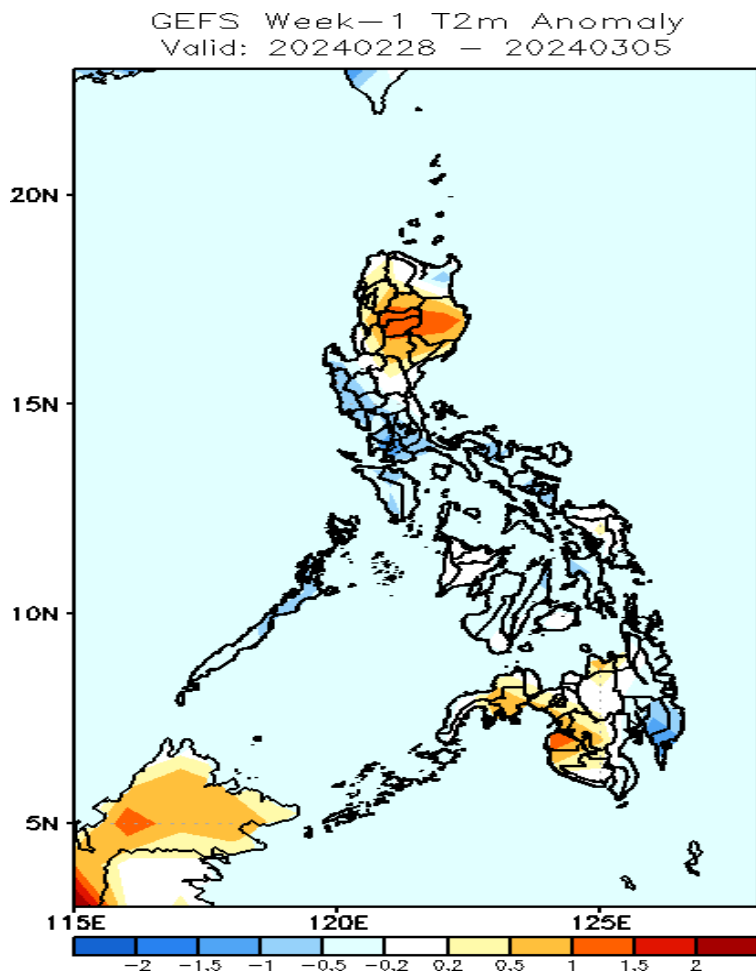
GEFS Week-2 Exceedance Prob. > 100mm
Valid: 20240306 – 20240312



Probability to Exceed 200mm

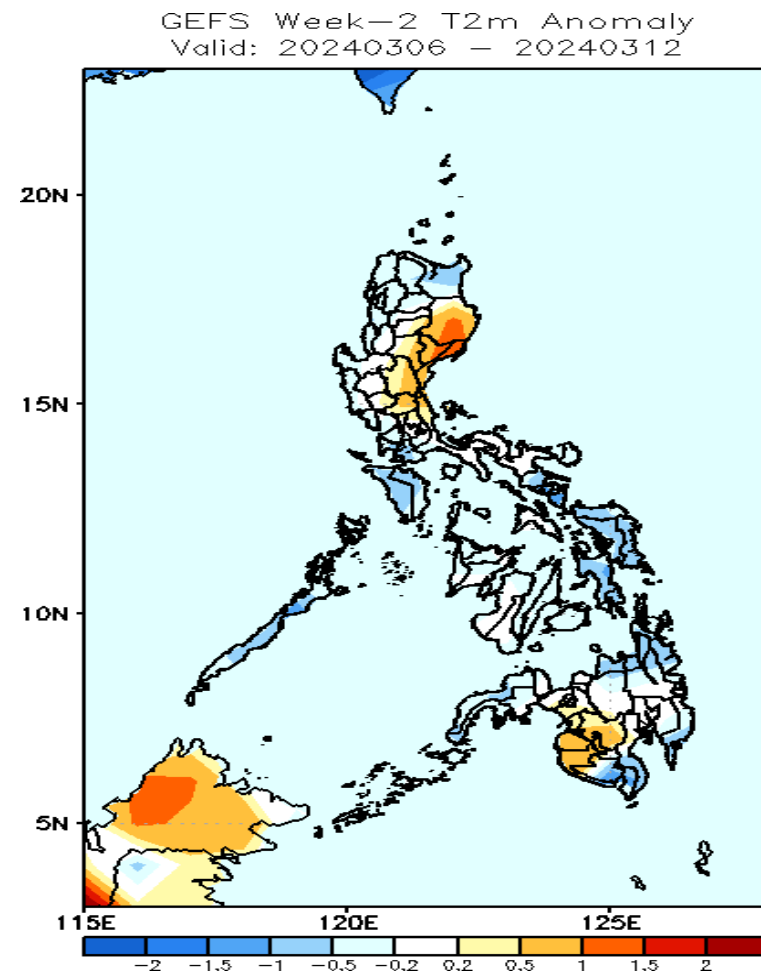
- Low across the country.

GEFS Week-1 & 2 Forecasts: T2m Anomaly



2m Temperature Week 1: February 28 - March 05, 2024

Average to warmer than average surface air temperature will likely be experienced in most parts of Northern Luzon and western, central and northern Mindanao while average to slightly cooler for the rest of the country.



2m Temperature Week 2: Mar 06 – 12, 2024

Average to cooler than average surface air temperature will likely be experienced in most parts of the country except in the western sections of Northern and Central Luzon, Maguindanao, Sultan Kudarat and North Cotabato where slightly average to warmer than