



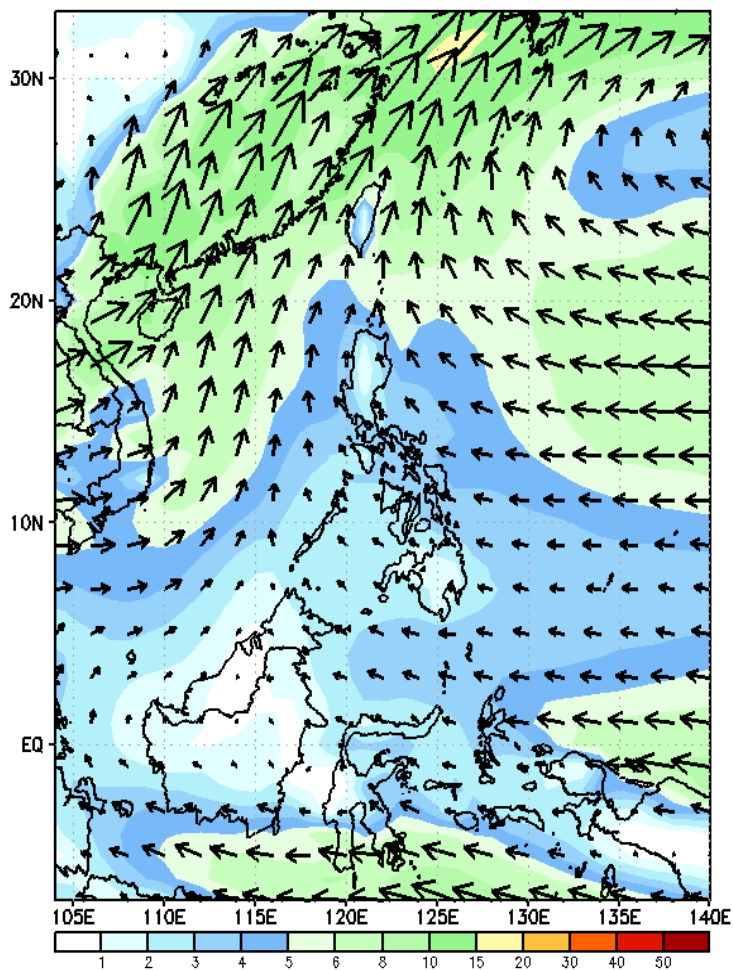
Week 1 & Week 2 Forecast for the Philippines using GEFS Model



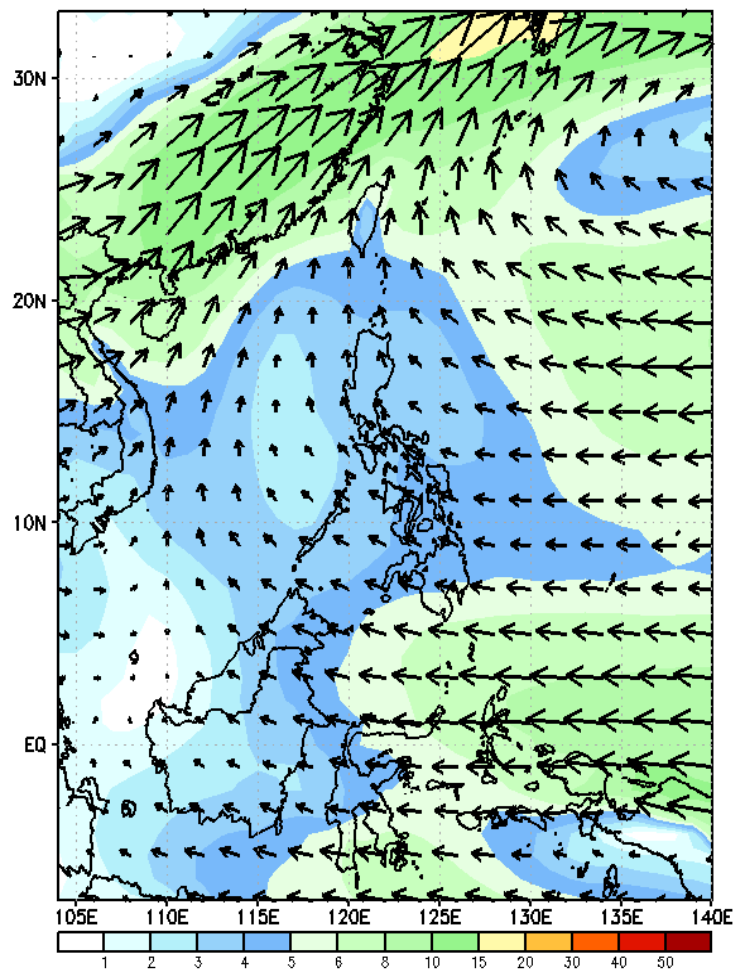
GEFS Week-1 Wind Forecasts:

Week 1: Jun 28- Jul 04, 2024

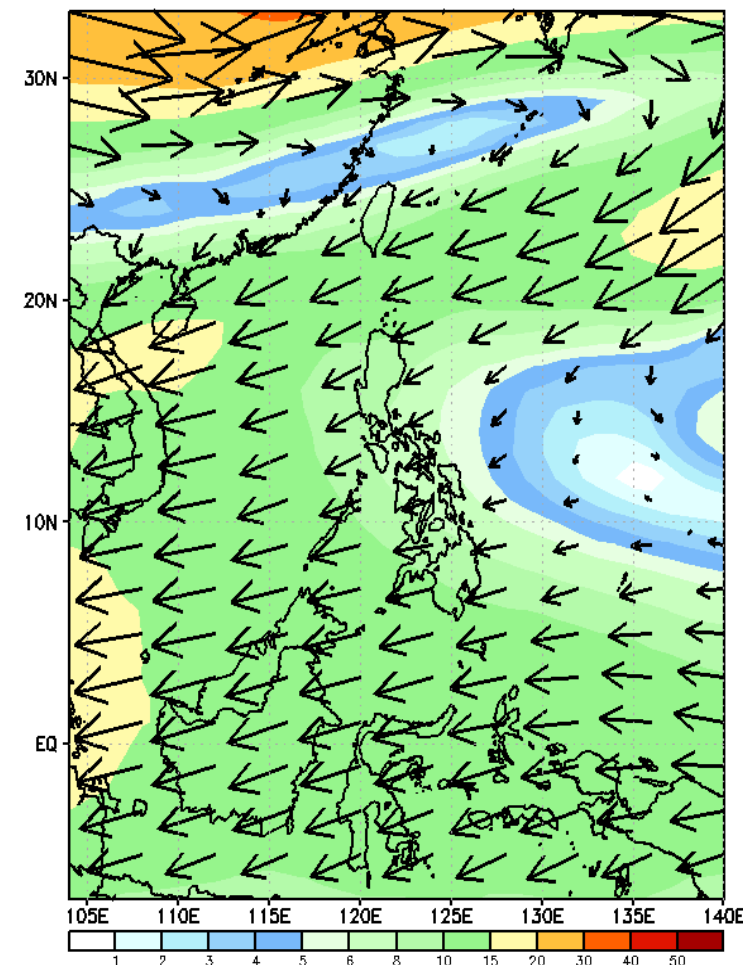
GEFS Week-1 850-hPa Wind Total
Valid: 20240628 - 20240704



GEFS Week-1 700-hPa Wind Total
Valid: 20240628 - 20240704



GEFS Week-1 200-hPa Wind Total
Valid: 20240628 - 20240704



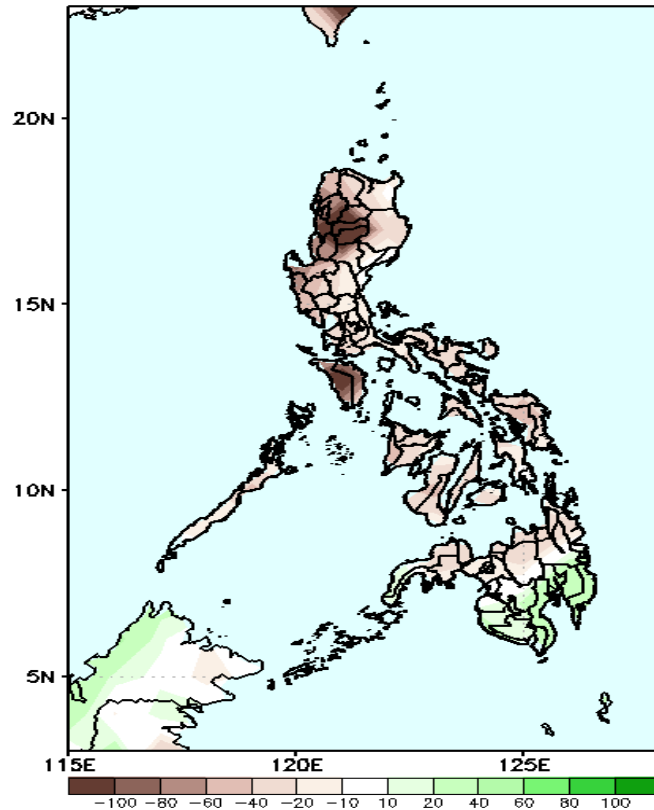
Easterlies affecting most parts of the country during the forecast period.

Precipitation Anomaly and Exceedance Probability > 25/50 mm



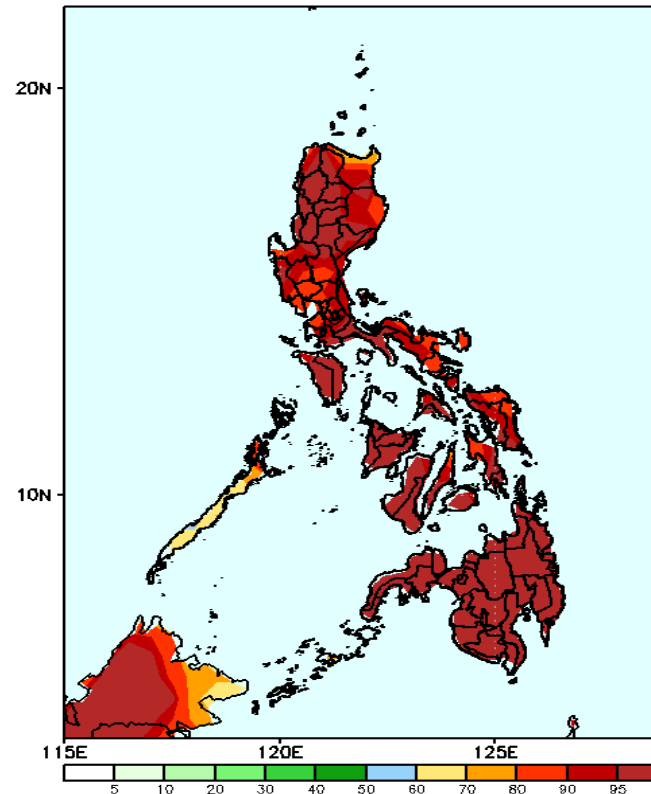
Week 1: Jun 28- Jul 04, 2024

GEFS Week-1 Precip Anomaly
Valid: 20240628 - 20240704



Rainfall deficit of more than 100mm in CAR, Ilocos Sur, and Mindoro; 20-60mm for the rest of Luzon, Visayas, and northern Mindanao while 20-60mm increase of rainfall for the rest of Mindanao.

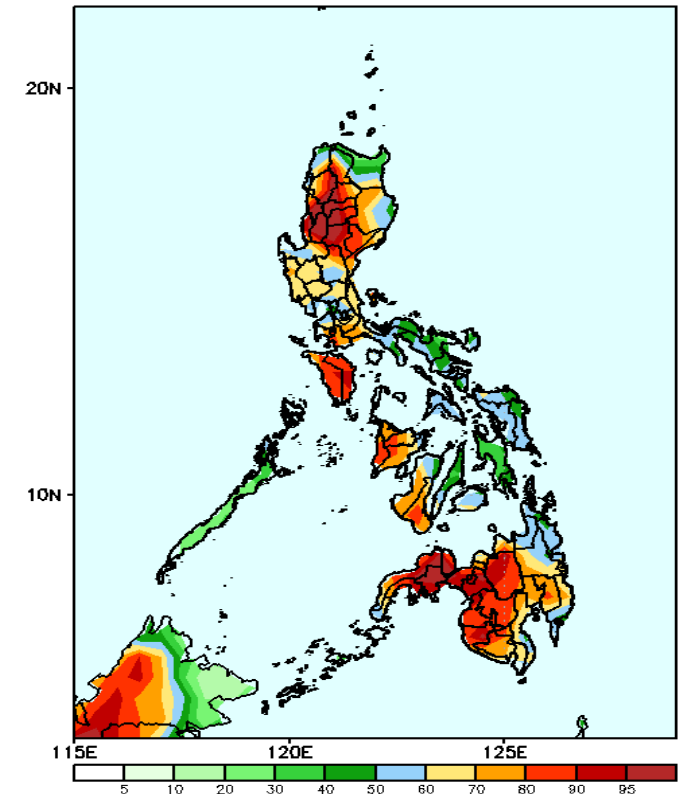
GEFS Week-1 Exceedance Prob. > 25mm
Valid: 20240628 - 20240704



Probability to Exceed 25mm

- High to very high across the country;

GEFS Week-1 Exceedance Prob. > 50mm
Valid: 20240628 - 20240704

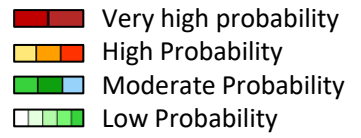


Probability to Exceed 50mm

- High to very high over CAR, La Union, Ilocos Sur, Mindoro Provinces and most of Western Mindanao,;
- Moderate to high over the rest of the country.

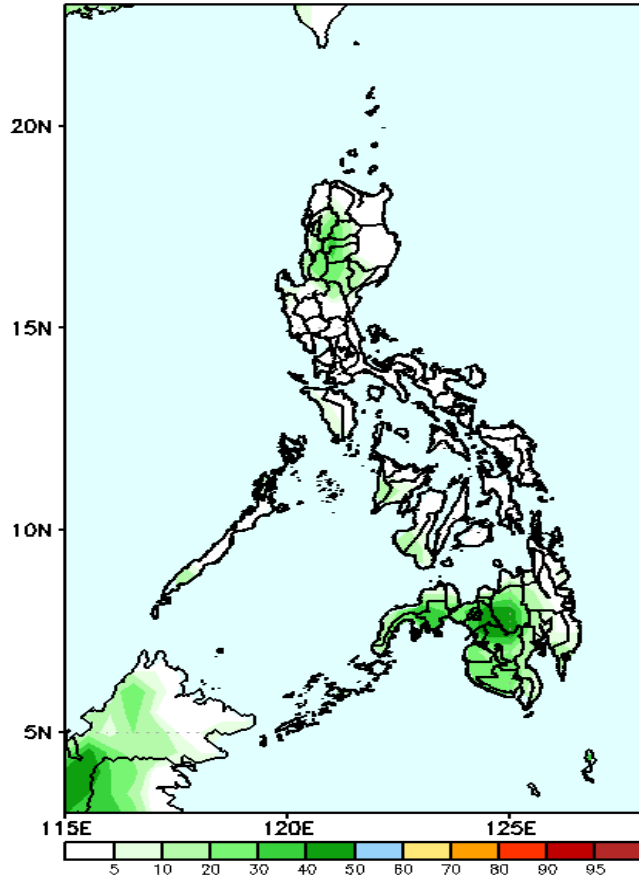


Exceedance Probability > 100/150/200 mm



Week 1: Jun 28- Jul 04, 2024

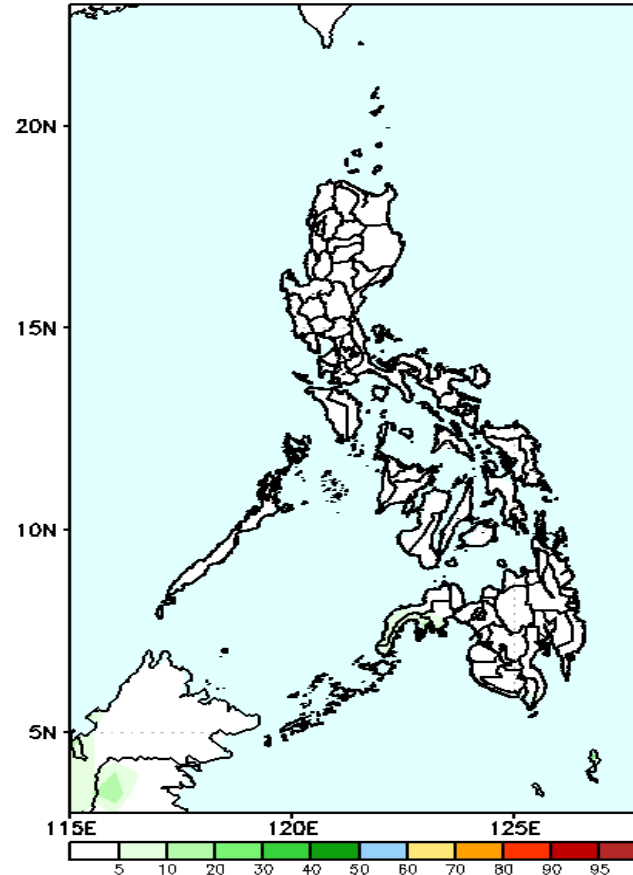
GEFS Week-1 Exceedance Prob. > 100mm
Valid: 20240628 - 20240704



Probability to Exceed 100mm

- Low to moderate over CAR;
- Low over the rest of the country.

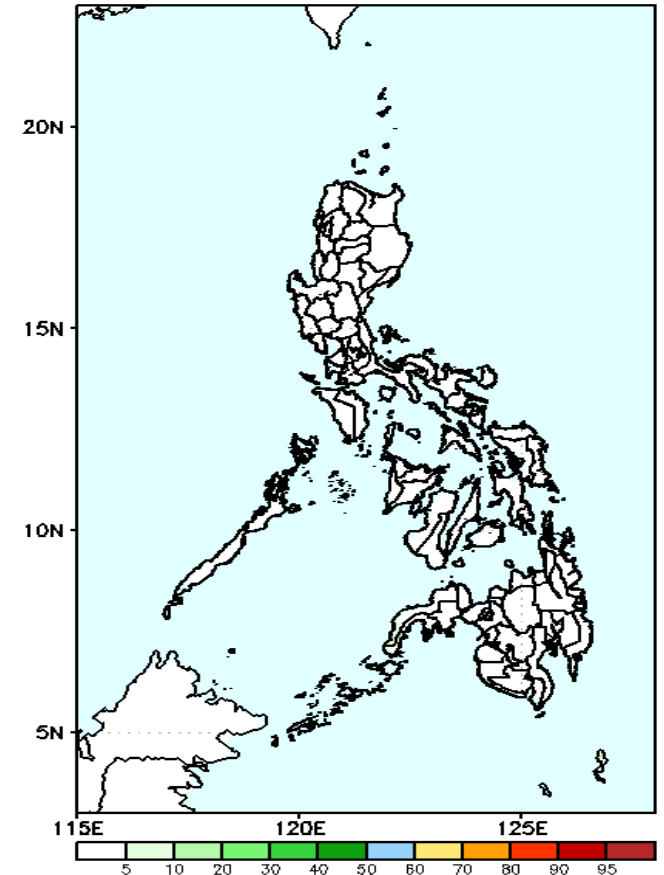
GEFS Week-1 Exceedance Prob. > 150mm
Valid: 20240628 - 20240704



Probability to Exceed 150mm

- Low across the country.

GEFS Week-1 Exceedance Prob. > 200mm
Valid: 20240628 - 20240704



Probability to Exceed 200mm

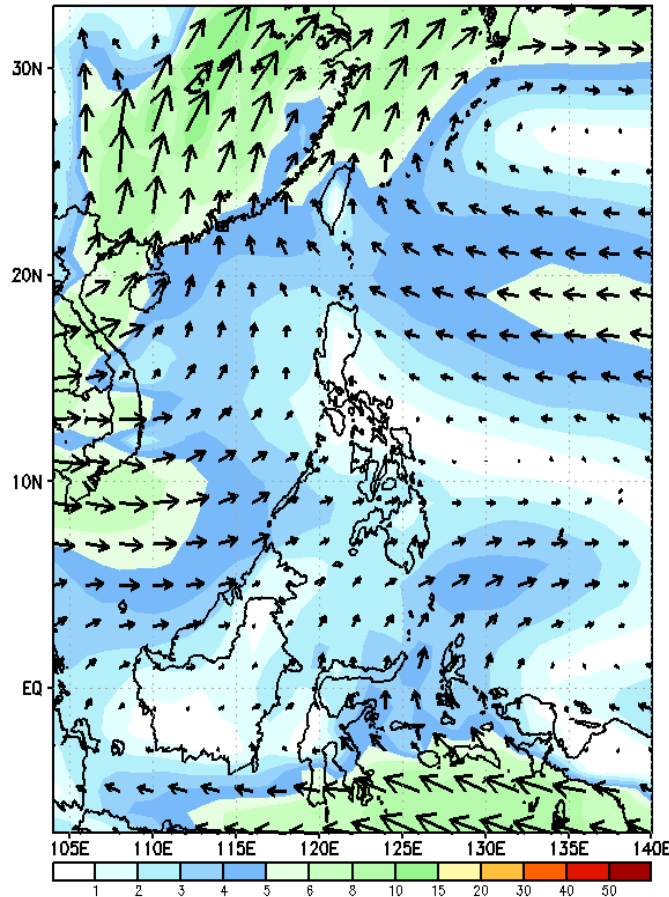
- Low across the country.



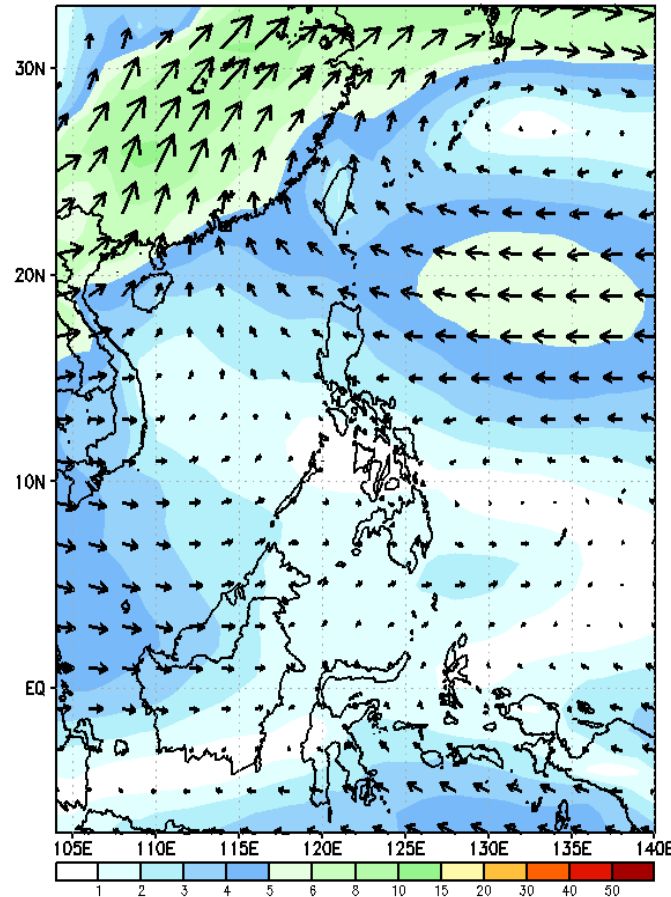
GEFS Week-2 Wind Forecasts:

Week 2: Jul 05-11, 2024

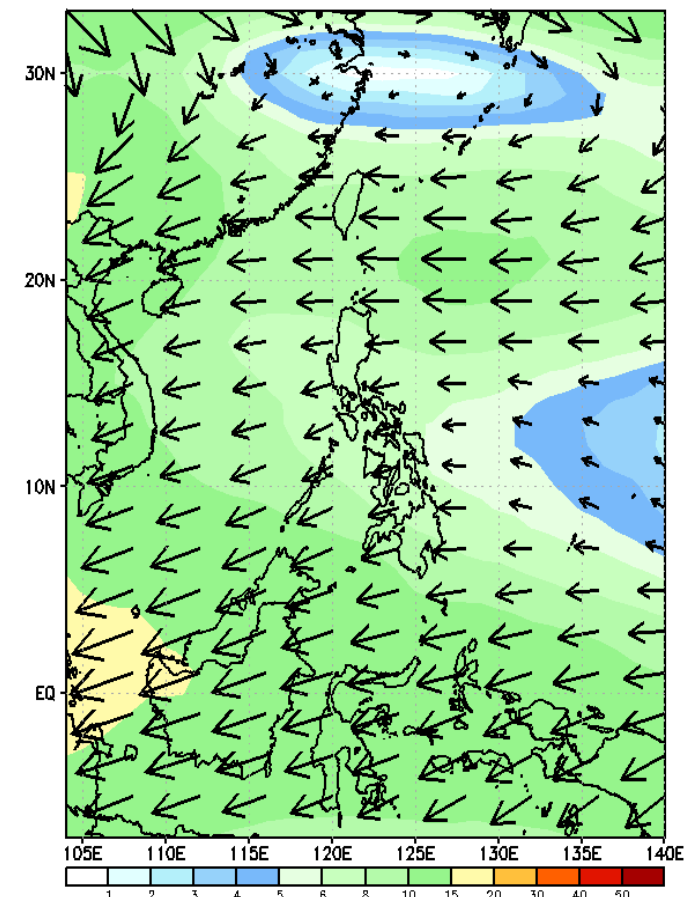
GEFS Week-2 850-hPa Wind Total
Valid: 20240705 - 20240711



GEFS Week-2 700-hPa Wind Total
Valid: 20240705 - 20240711

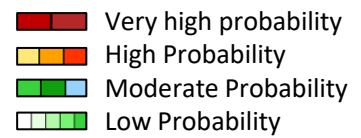


GEFS Week-2 200-hPa Wind Total
Valid: 20240705 - 20240711



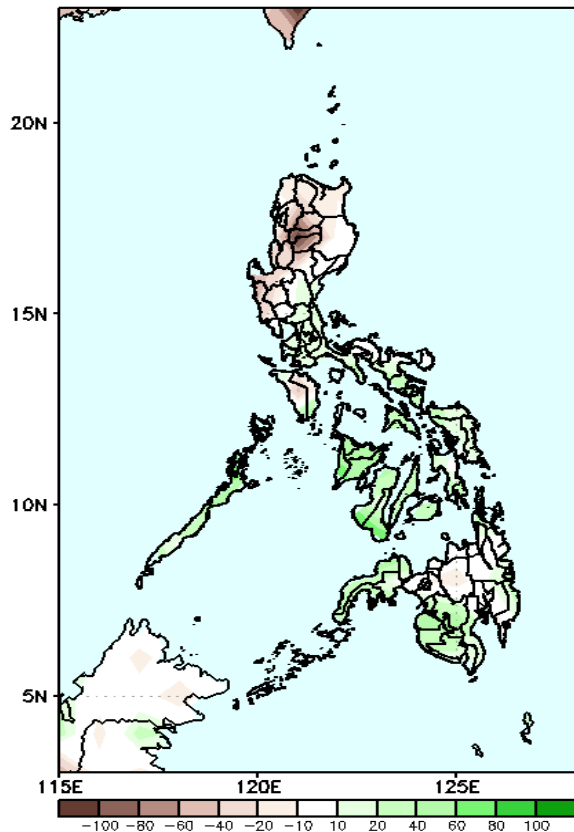
Southwest Monsoon affecting some parts of Western Luzon and Visayas while Easterlies affecting the rest of the country during the forecast period

Precipitation Anomaly and Exceedance Probability > 25/50 mm



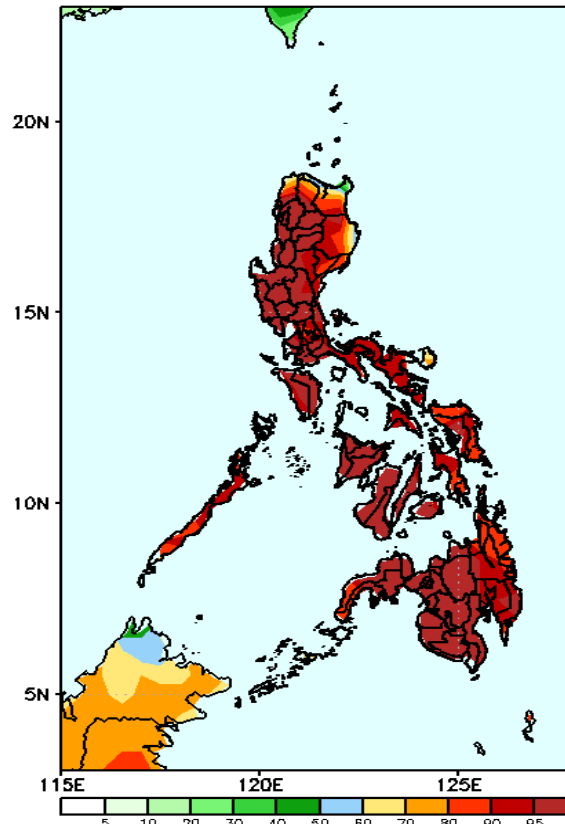
Week 2: Jul 05-11, 2024

GEFS Week-2 Precip Anomaly
Valid: 20240705 - 20240711



Rainfall deficit of 20-70mm in most parts of Luzon while 20-70mm increase of rainfall in most parts of Visayas and western Mindanao is expected.

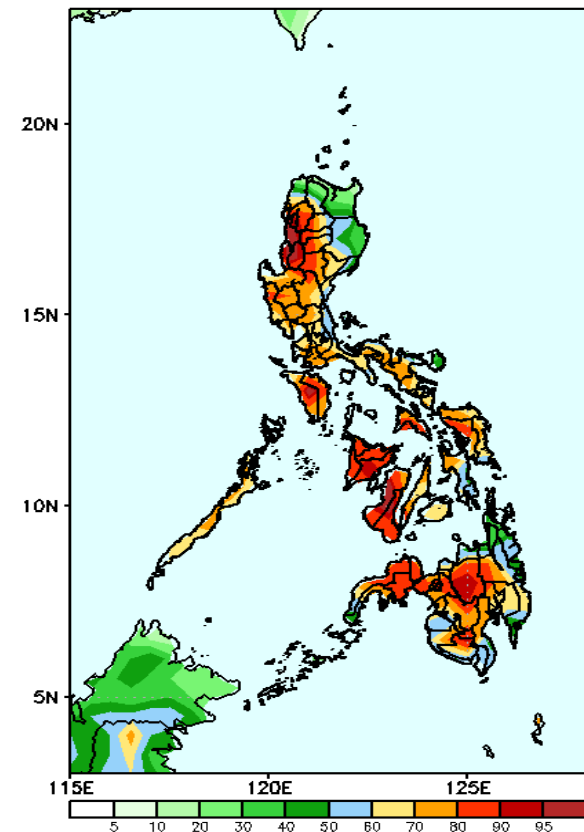
GEFS Week-2 Exceedance Prob. > 25mm
Valid: 20240705 - 20240711



Probability to Exceed 25mm

- High to very high over most of the country;
- Moderate to high over the northernmost part of Cagayan.

GEFS Week-2 Exceedance Prob. > 50mm
Valid: 20240705 - 20240711



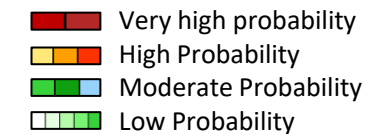
Probability to Exceed 50mm

- High to very high over CAR, La Union, Ilocos Sur, Western Visayas and most of Western Mindanao,,;
- Moderate to high over the rest of the country.

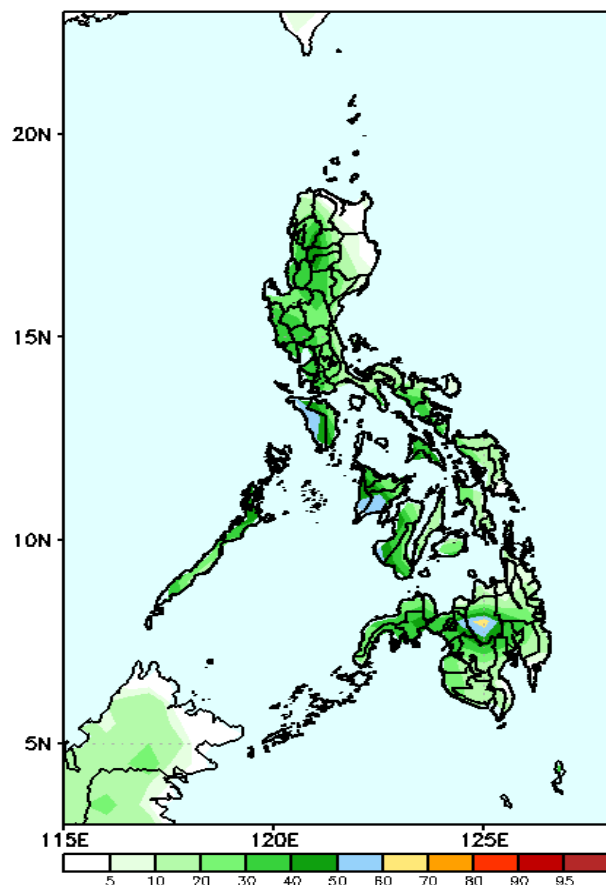


Exceedance Probability > 100/150/200 mm

Week 2: Jul 05-11, 2024



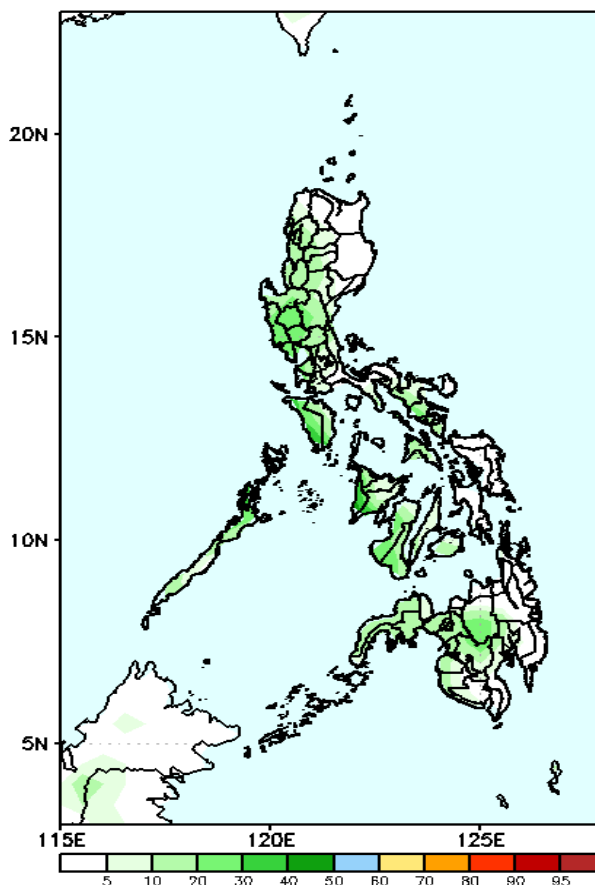
GEFS Week-2 Exceedance Prob. > 100mm
Valid: 20240705 - 20240711



Probability to Exceed 100mm

- Moderate to high over Bukidnon;
- Low to moderate over the rest of the country.

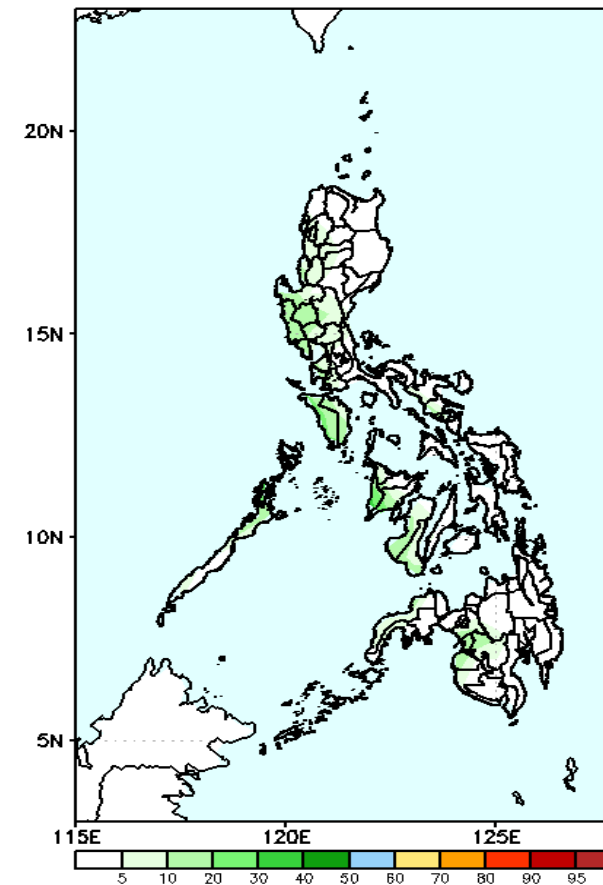
GEFS Week-2 Exceedance Prob. > 150mm
Valid: 20240705 - 20240711



Probability to Exceed 150mm

- Low across the country.

GEFS Week-2 Exceedance Prob. > 200mm
Valid: 20240705 - 20240711



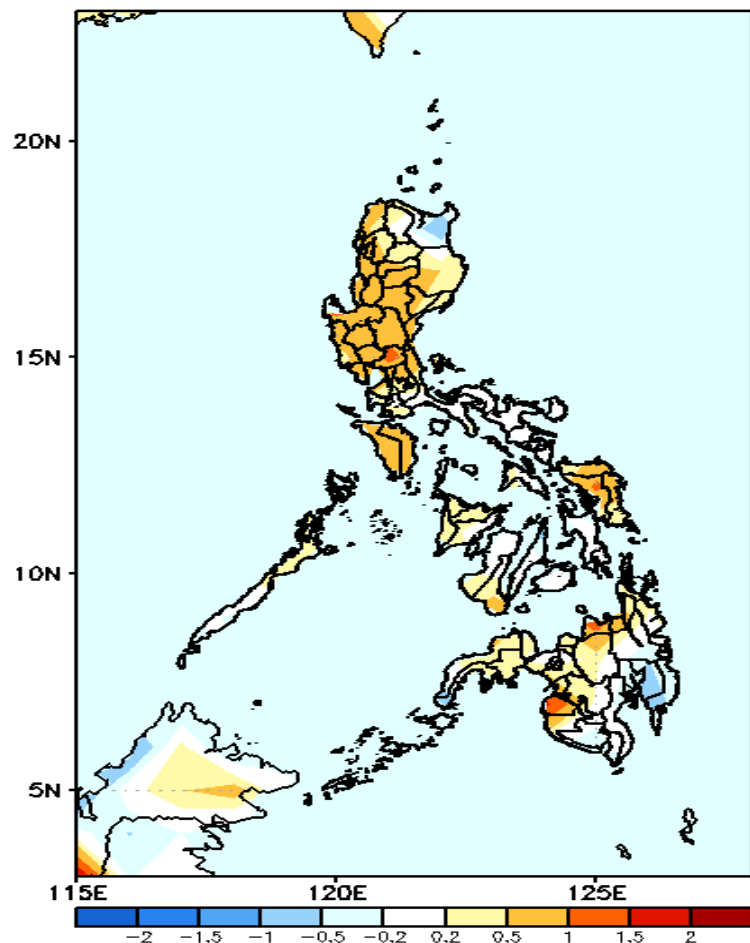
Probability to Exceed 200mm

- Low across the country.



GEFS Week-1 & 2 Forecasts: T2m Anomaly

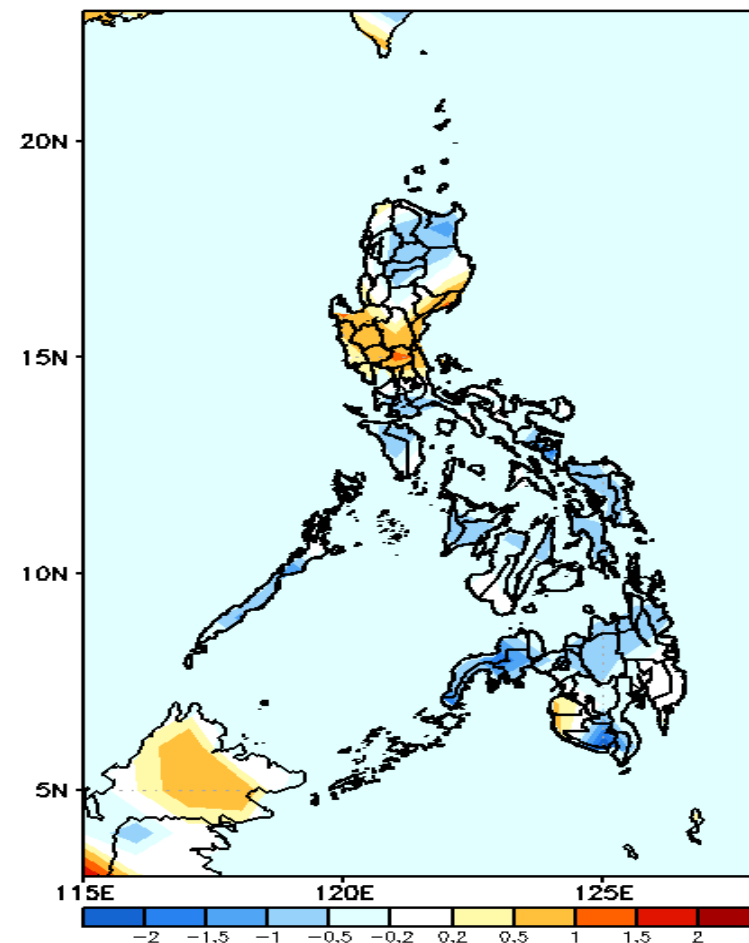
GEFS Week-1 T2m Anomaly
Valid: 20240628 – 20240704



2m Temperature Week 1: Jun 28- Jul 04, 2024

Near to warmer than average surface air temperature will likely be experienced in most parts of the country except in Cagayan and Davao Region where near to slightly cooler temperature is expected.

GEFS Week-2 T2m Anomaly
Valid: 20240705 – 20240711



2m Temperature Week 2: Jul 05-11, 2024

Near to cooler surface air temperature will likely be experienced in most parts of the country except in central Luzon and some areas in eastern Luzon where slightly warmer to warmer than average temperature is expected.