



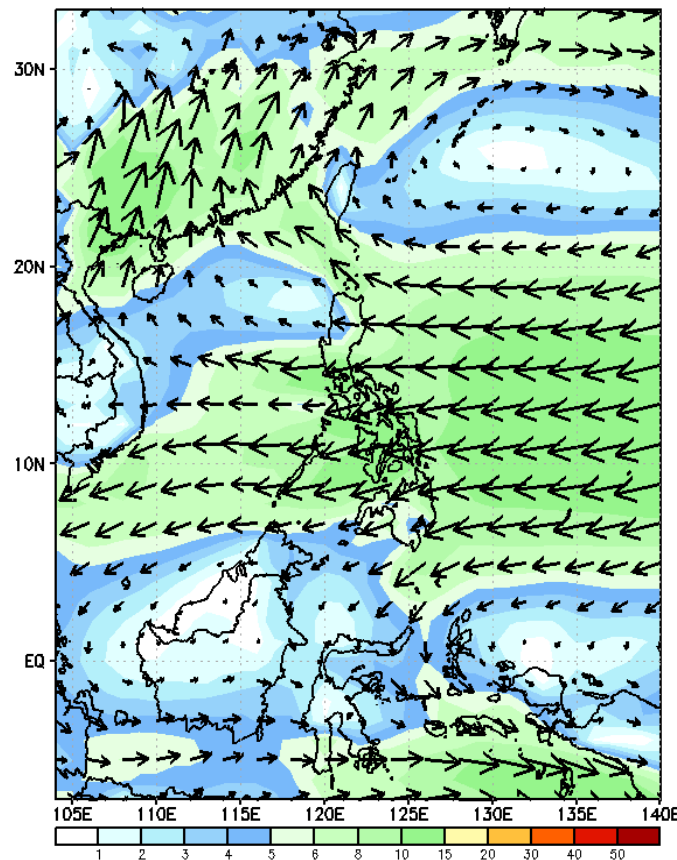
Week 1 & Week 2 Forecast for the Philippines using GEFS Model



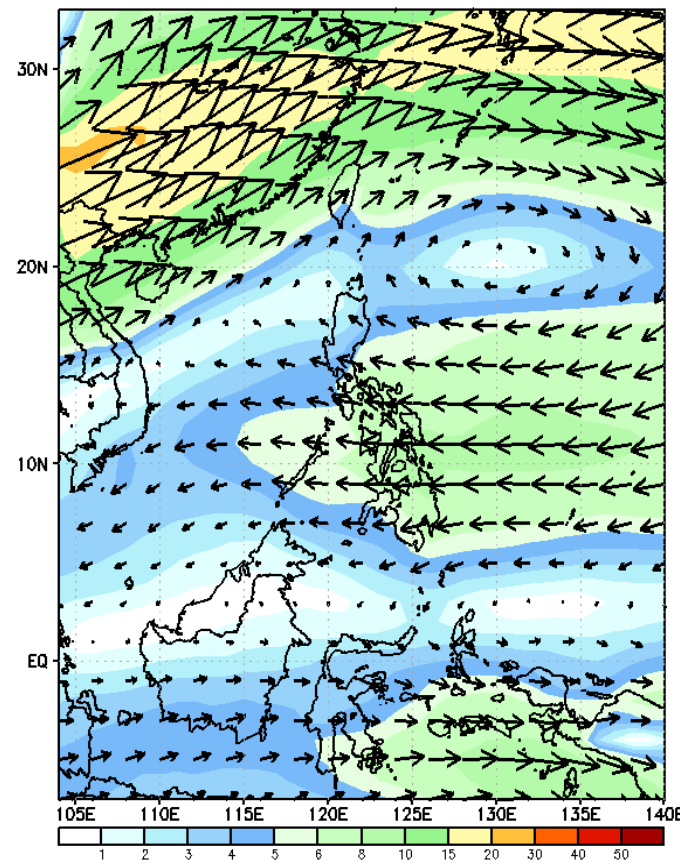
GEFS Week-1 Forecasts: Wind Forecast

Week 1: January 29 - February 04, 2024

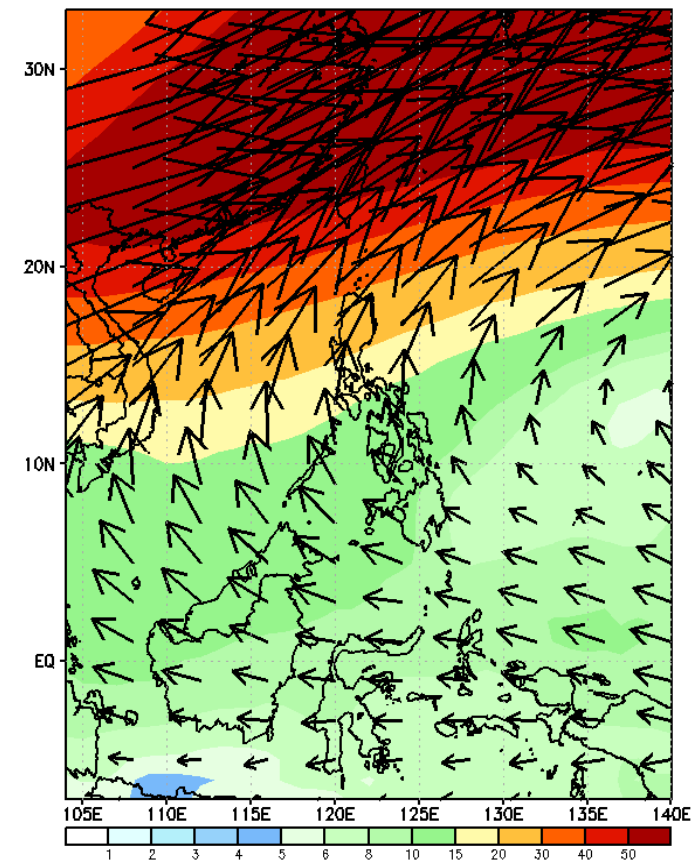
GEFS Week-1 850-hPa Wind Total
Valid: 20240129 - 20240204



GEFS Week-1 700-hPa Wind Total
Valid: 20240129 - 20240204



GEFS Week-1 200-hPa Wind Total
Valid: 20240129 - 20240204



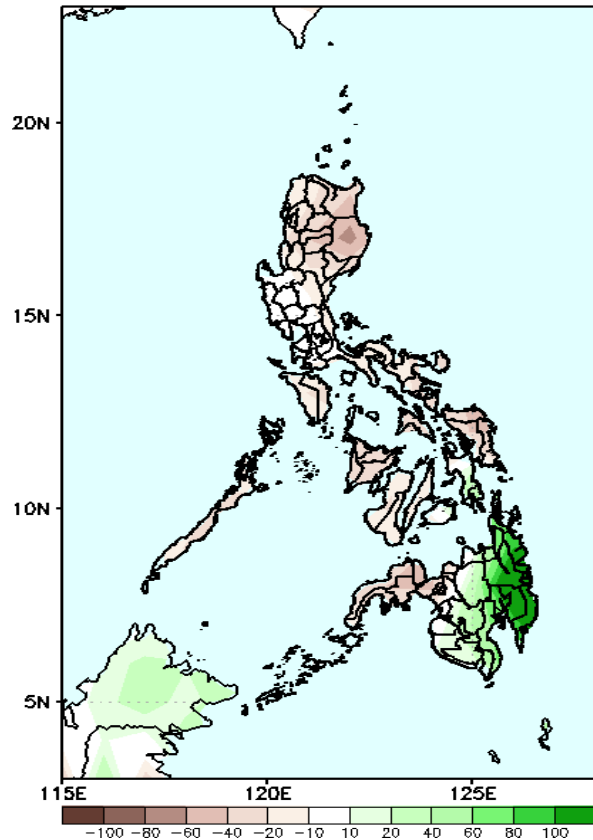
Northeast Monsoon affecting Extreme Northern Luzon; Easterlies affecting the rest of the country.

Precipitation Anomaly and Exceedance Probability > 25/50 mm



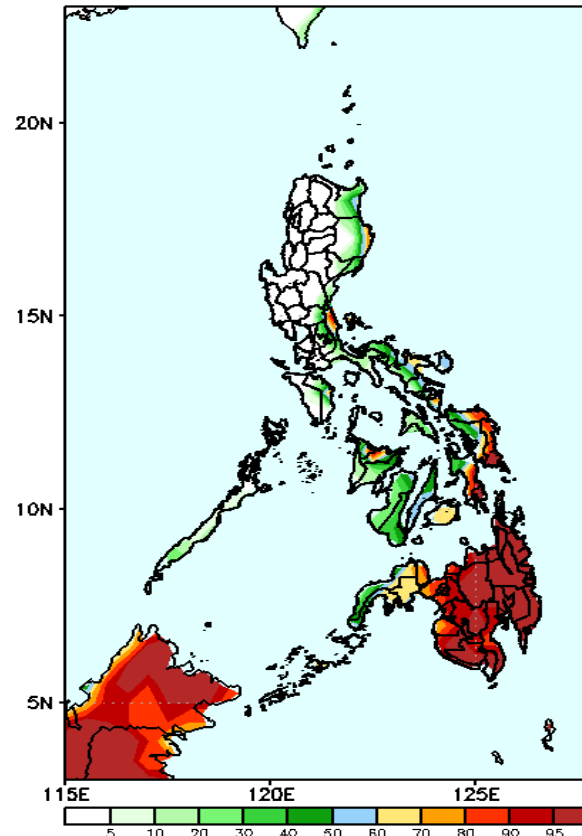
Week 1: January 29 - February 04, 2024

GEFS Week-1 Precip Anomaly
Valid: 20240129 - 20240204



Rainfall deficit of 20-60mm in most parts of the country except in most parts of Mindanao except Zamboanga Peninsula where an increase of 40-80mm of rainfall is likely.

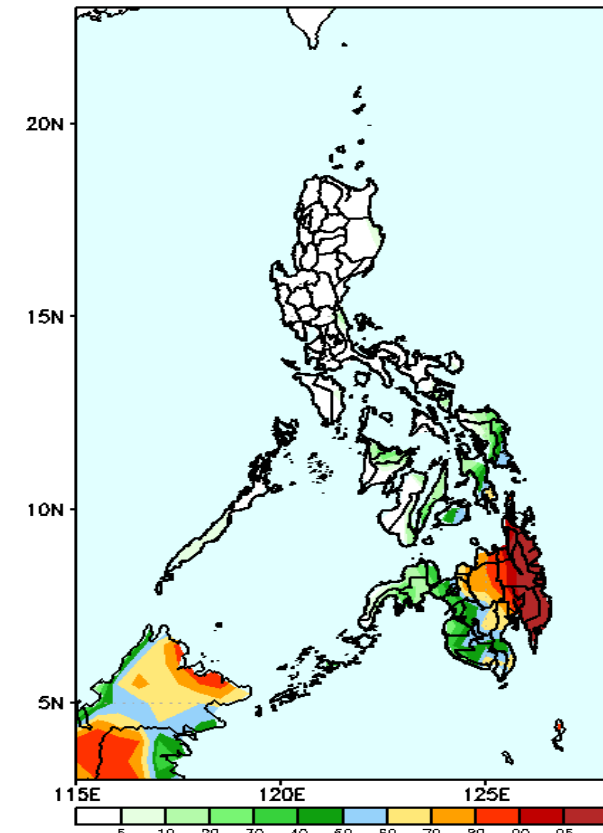
GEFS Week-1 Exceedance Prob. > 25mm
Valid: 20240129 - 20240204



Probability to Exceed 25mm

- High to very high over Eastern Samar, Southern Leyte and most parts of Mindanao;
- Moderate to high over the eastern portion of Cagayan and Isabela, northern Quezon, Bicol region, the rest of Eastern Visayas, Central Visayas, Aklan, Capiz and Zamboanga Peninsula;
- Low to moderate over the rest of the country.

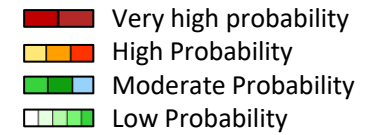
GEFS Week-1 Exceedance Prob. > 50mm
Valid: 20240129 - 20240204



Probability to Exceed 50 mm

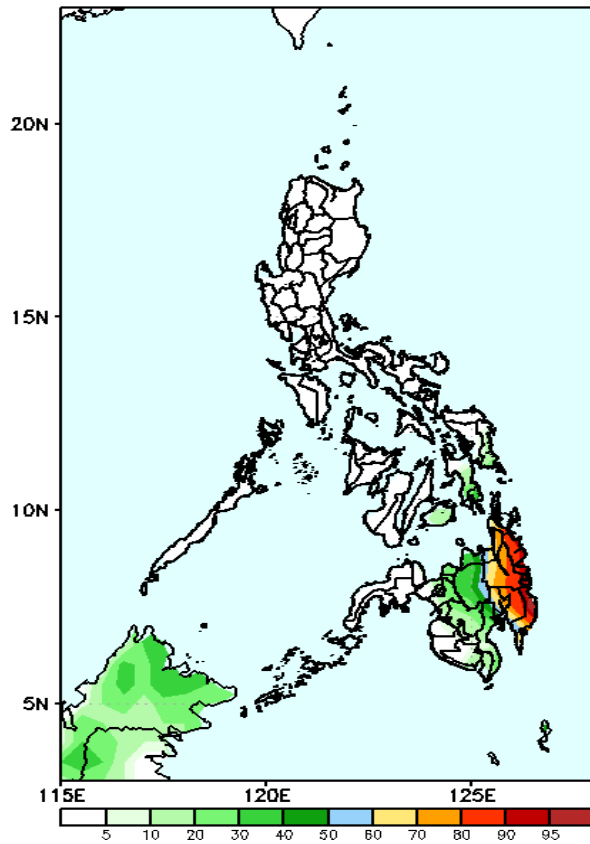
- High to very high over Eastern Mindanao;
- Moderate to high over Southern Leyte and the rest of Mindanao;
- Low to moderate over Eastern and Central Visayas;
- Low over the rest of the country.

Exceedance Probability > 100/150/200 mm



Week 1: January 29 - February 04, 2024

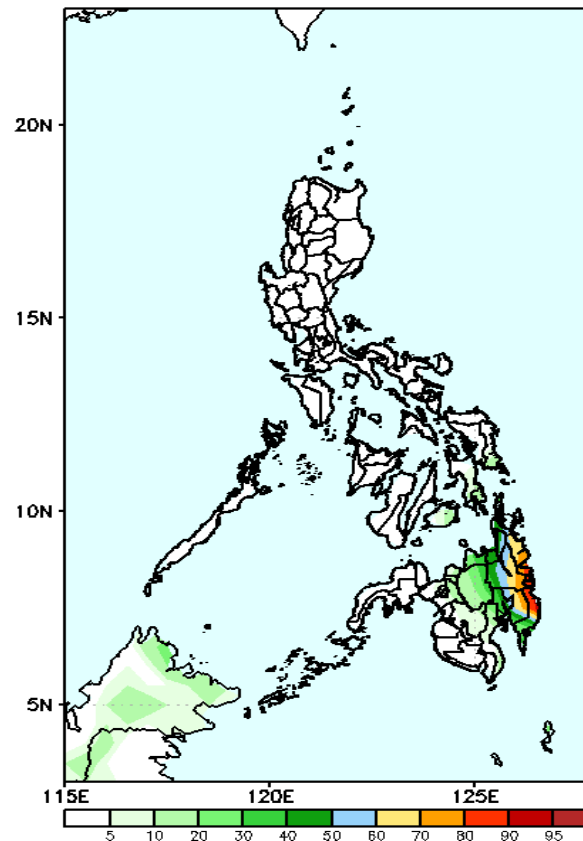
GEFS Week-1 Exceedance Prob. > 100mm
Valid: 20240129 - 20240204



Probability to Exceed 100mm

- Moderate to high over Eastern Mindanao;
- Low to moderate over Northern Mindanao;
- Low over the rest of the country.

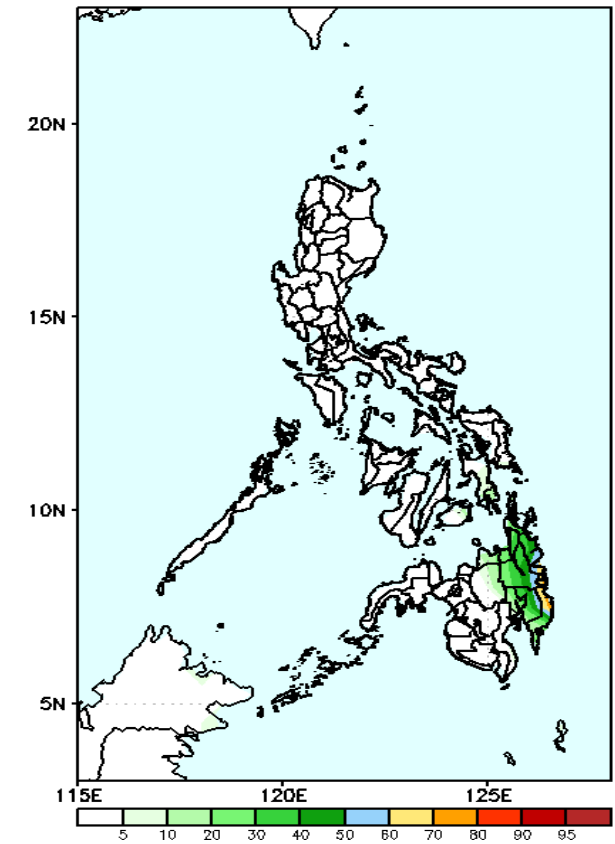
GEFS Week-1 Exceedance Prob. > 150mm
Valid: 20240129 - 20240204



Probability to Exceed 150mm

- Moderate to high over Eastern Mindanao;
- Low elsewhere.

GEFS Week-1 Exceedance Prob. > 200mm
Valid: 20240129 - 20240204



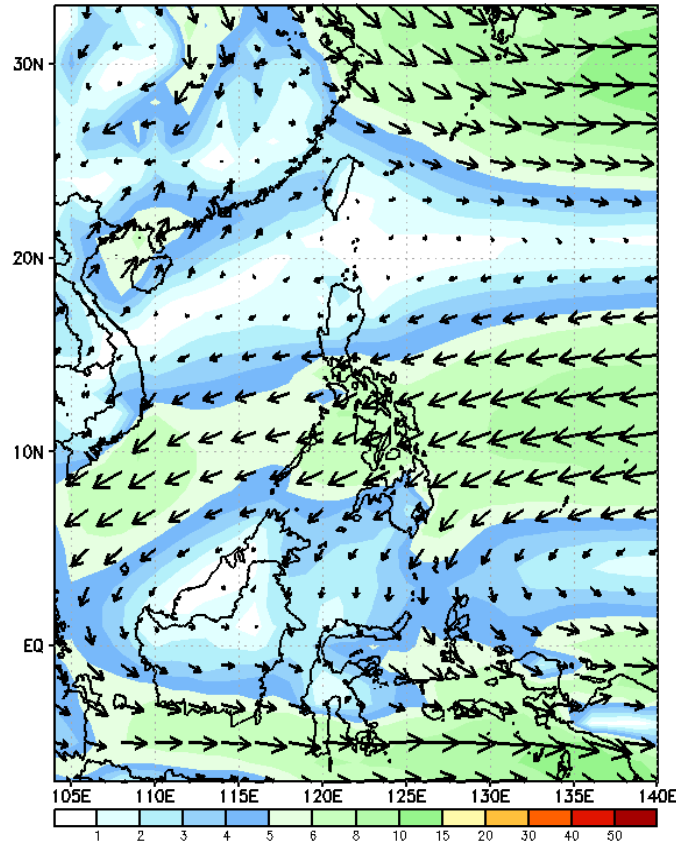
Probability to Exceed 200mm

- Moderate to high over Surigao provinces and Davao Oriental;
- Low to moderate over the rest of eastern Mindanao;
- Low elsewhere.

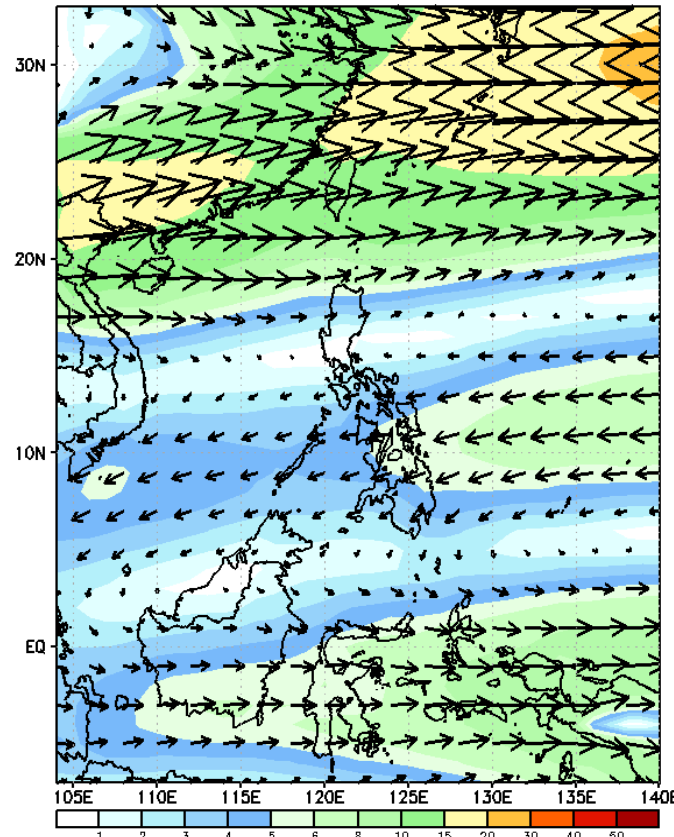
GEFS Week-2 Forecasts: Wind Forecast

Week 2: February 05 - 11, 2024

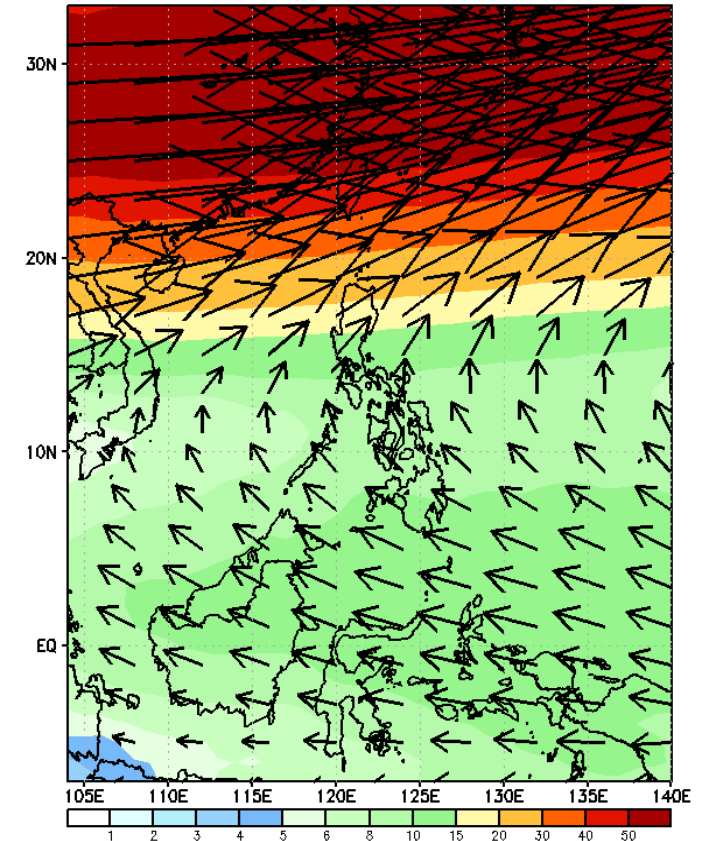
GEFS Week-2 850-hPa Wind Total
Valid: 20240205 - 20240211



GEFS Week-2 700-hPa Wind Total
Valid: 20240205 - 20240211



GEFS Week-2 200-hPa Wind Total
Valid: 20240205 - 20240211



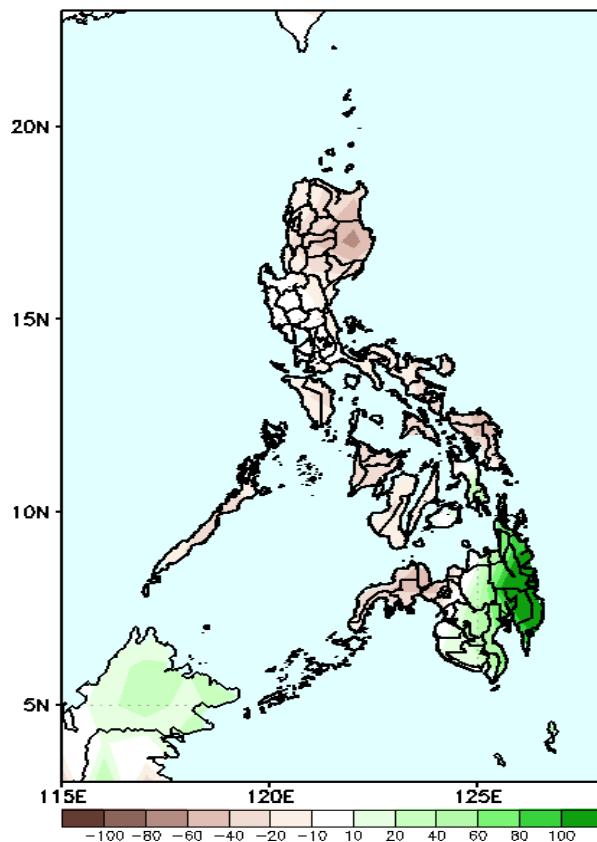
Northeast Monsoon affecting Extreme Northern Luzon; Easterlies affecting the rest of the country.

Precipitation Anomaly and Exceedance Probability > 25/50 mm



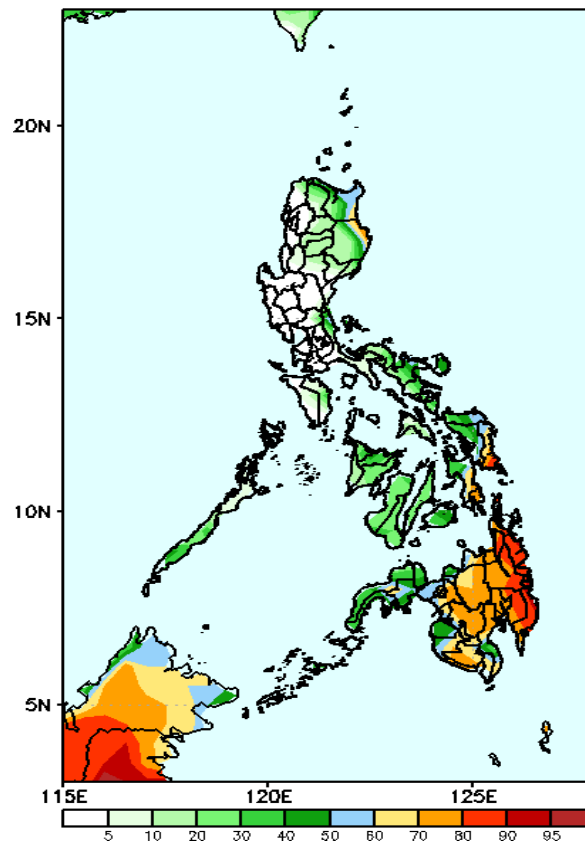
Week 2: February 05 - 11, 2024

GEFS Week-1 Precip Anomaly
Valid: 20240129 - 20240204



Rainfall deficit of 20-60mm in most parts of the country except in most parts of Mindanao except Zamboanga Peninsula where an increase of 40-80mm of rainfall is likely.

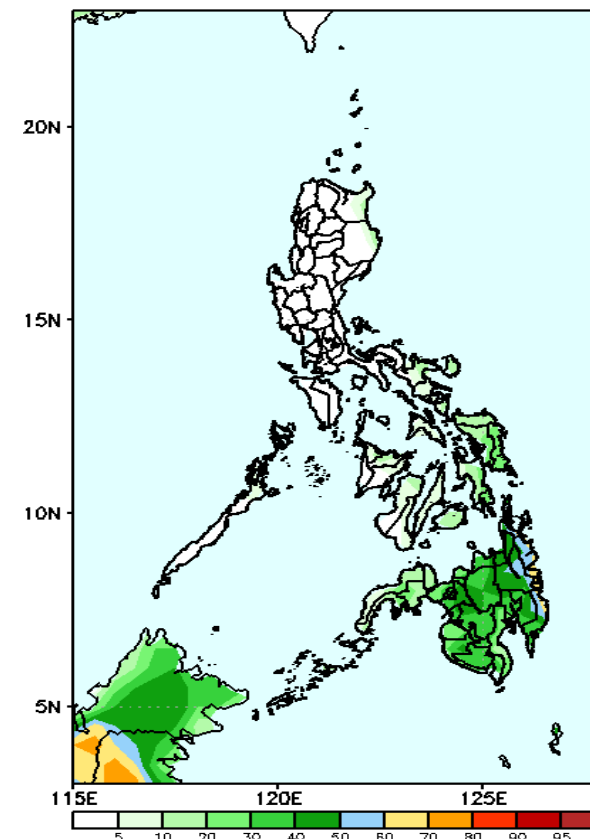
GEFS Week-2 Exceedance Prob. > 25mm
Valid: 20240205 - 20240211



Probability to Exceed 25mm

- High to very high over Eastern Mindanao;
- Moderate to high over eastern portions of Cagayan, Isabela, Eastern Visayas and the rest of Mindanao;
- Low to moderate over the rest of Luzon and Visayas.

GEFS Week-2 Exceedance Prob. > 50mm
Valid: 20240205 - 20240211



Probability to Exceed 50mm

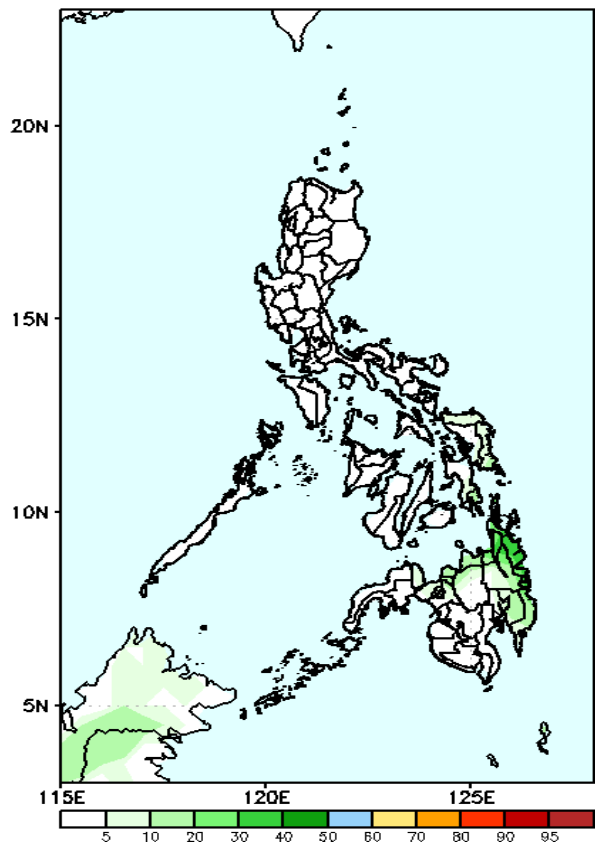
- Moderate to high over Surigao provinces and Davao Oriental;
- Low to moderate over Eastern Visayas and the rest of Mindanao;
- Low elsewhere.

Exceedance Probability > 100/150/200 mm

Week 2: February 05 - 11, 2024

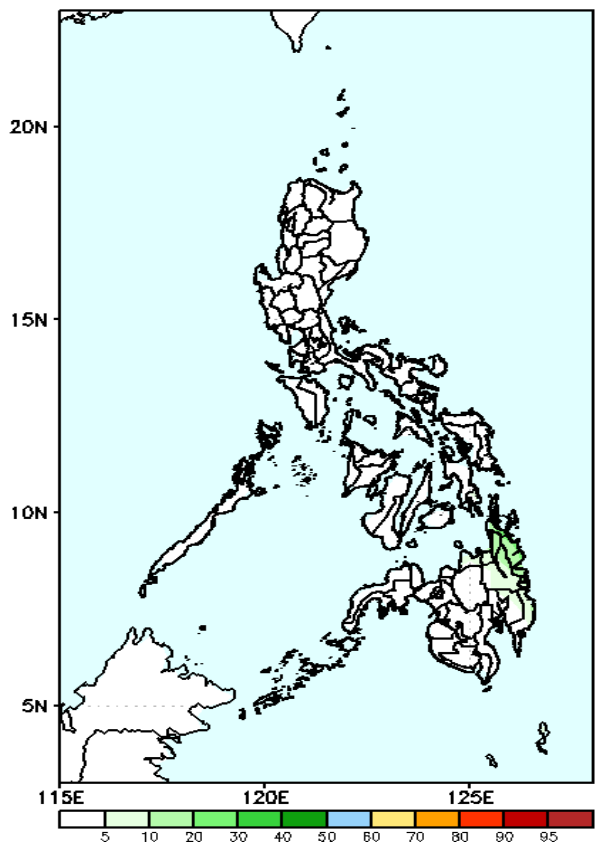
- Very high probability
- High Probability
- Moderate Probability
- Low Probability

GEFS Week-2 Exceedance Prob. > 100mm
Valid: 20240205 - 20240211



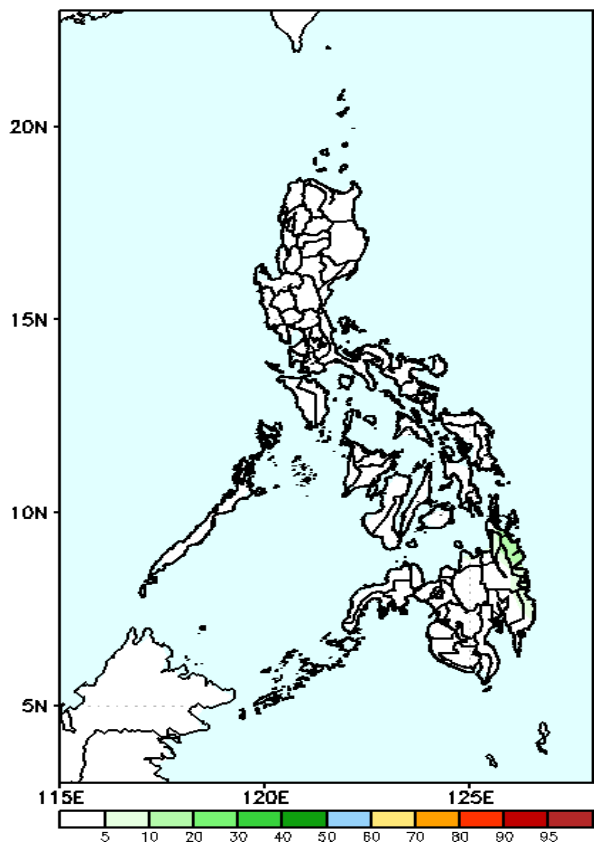
Probability to Exceed 100mm
• Low across the country.

GEFS Week-2 Exceedance Prob. > 150mm
Valid: 20240205 - 20240211



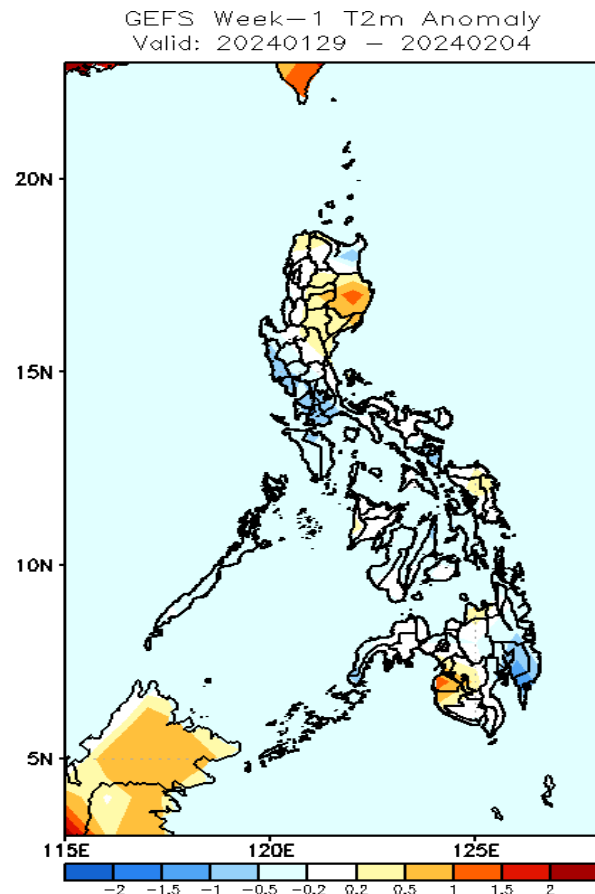
Probability to Exceed 150mm
• Low across the country.

GEFS Week-2 Exceedance Prob. > 200mm
Valid: 20240205 - 20240211



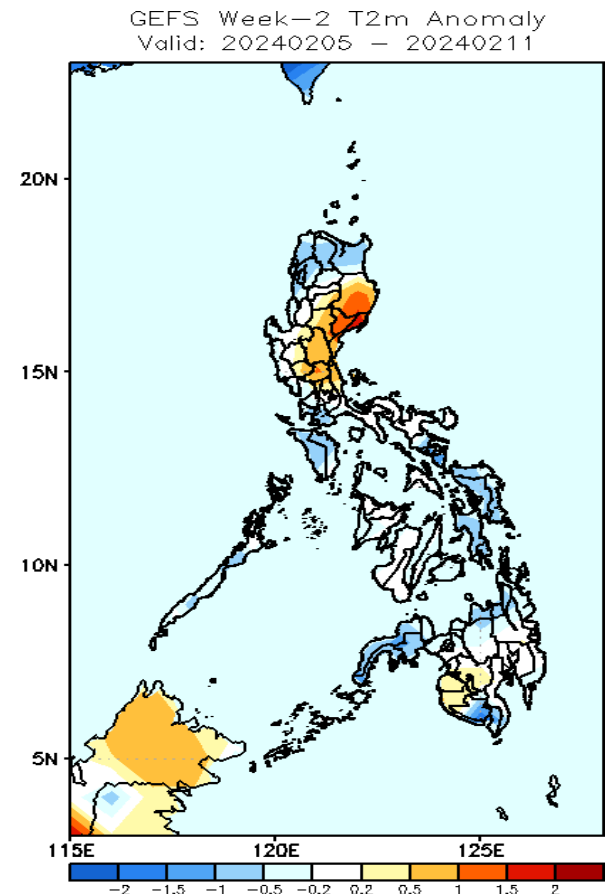
Probability to Exceed 200mm
• Low across the country.

GEFS Week-1 & 2 Forecasts: T2m Anomaly



2m Temperature Week 1: January 29 - February 04, 2024

Near to cooler than average surface air temperature average will likely be experienced in most parts country except in most parts of Northern Luzon, Aurora, Maguindanao and Sultan Kudarat where slightly warmer than average temperature is expected.



2m Temperature Week 2: February 05 - 11, 2024

Near to cooler than average surface air temperature will likely be experienced in most parts of the country except in most parts of Eastern and Central Luzon, South Cotabato, Maguindanao and Sultan Kudarat where slightly warmer to warmer than average temperature is expected.