



USAID
FROM THE AMERICAN PEOPLE



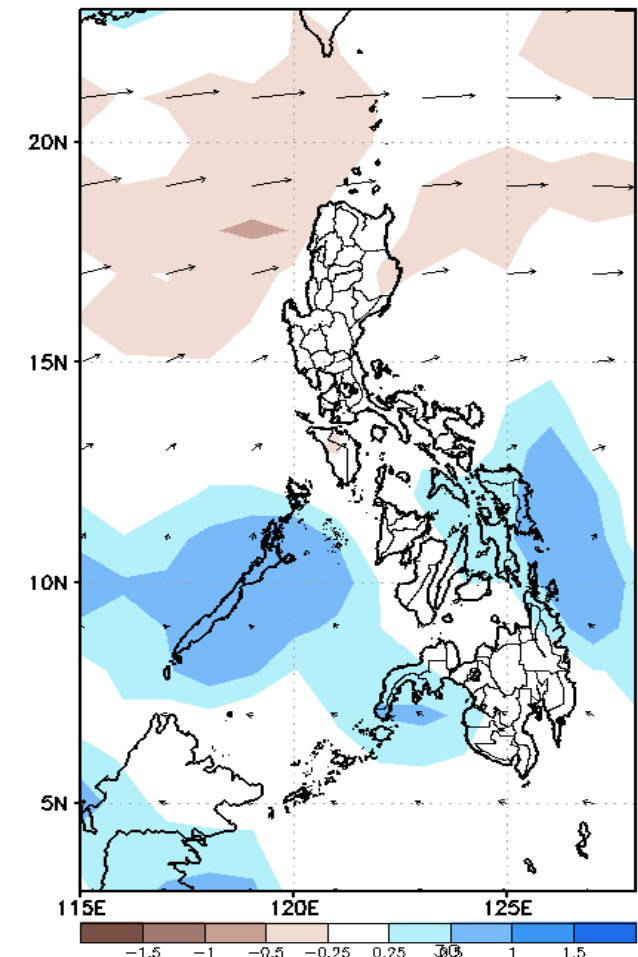
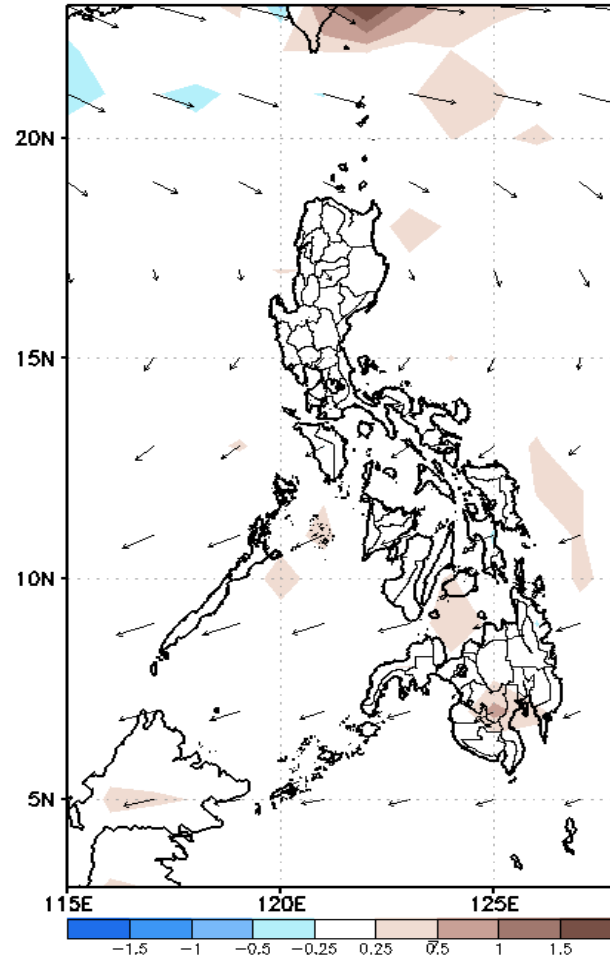
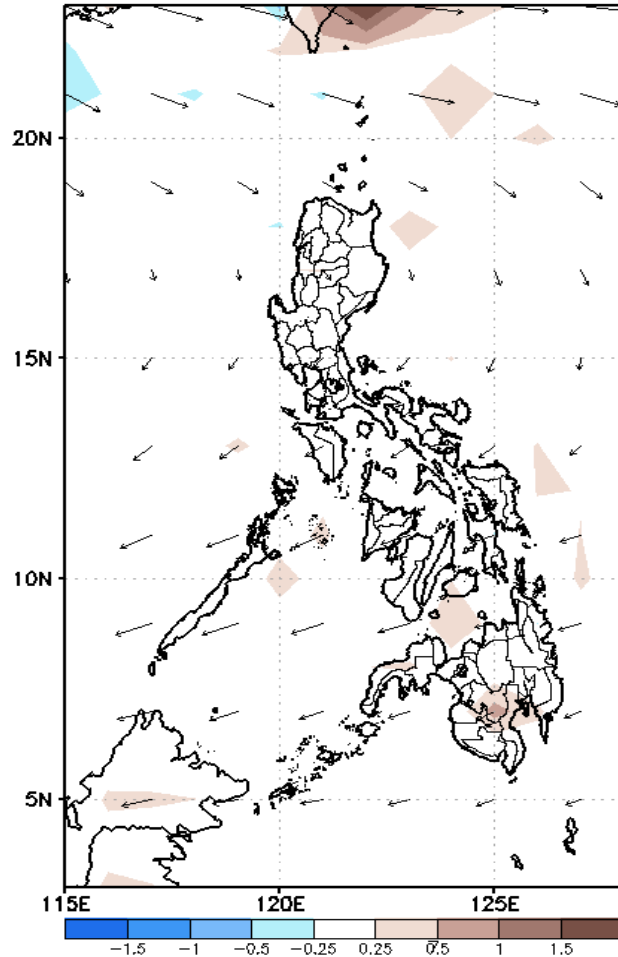
Week 1 & Week 2 Forecast for the Philippines using GEFS Model



GEFS Week-1 Forecasts: Divergence & Wind Anomaly

Week 1: April 20- April 26, 2020

GEFS Week-1 850-hPa Divergence and Wind Anom. GEFS Week-1 700-hPa Divergence and Wind Anom. GEFS Week-1 200-hPa Divergence and Wind Anom.
Valid: 20200420 - 20200426

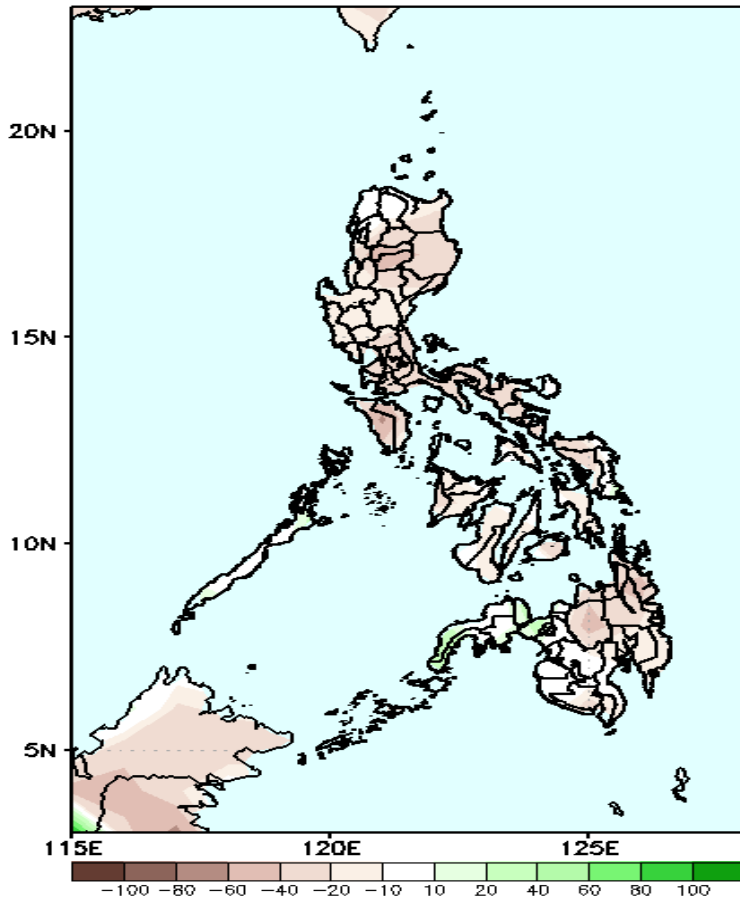


Upper level (750 hPa) Divergence suggest likelihood of precipitation in some parts of Luzon and Mindanao due to localize thunderstorm. Easterlies affecting most parts of the country during the forecast period.

Precipitation Anomaly and Exceedance Probability > 25/50 mm

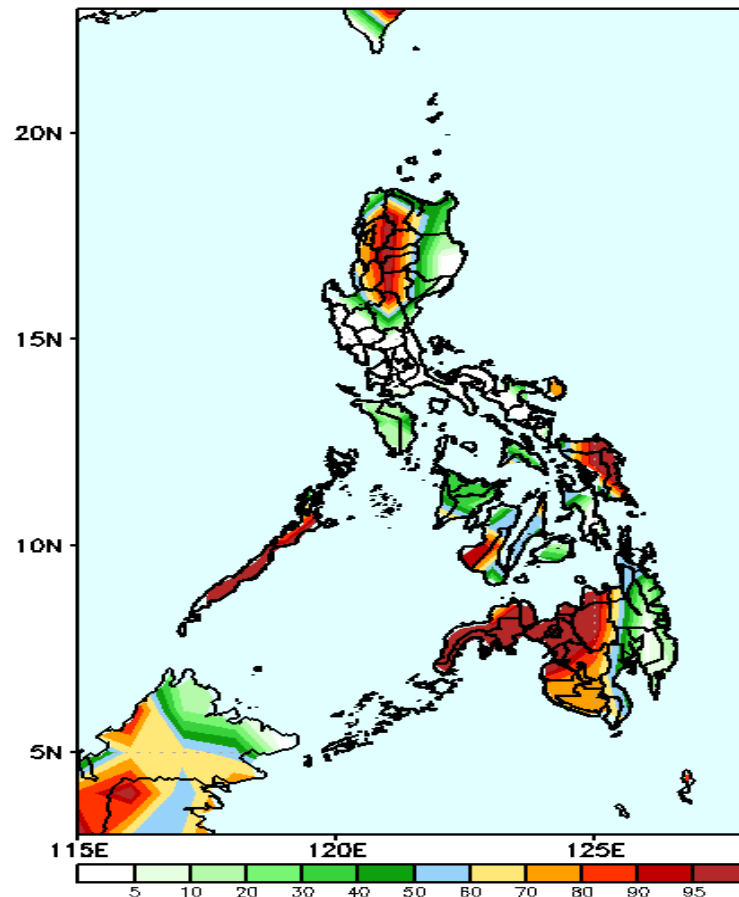
Week 1: April 20- April 26, 2020

GEFS Week-1 Precip Anomaly
Valid: 20200420 - 20200426



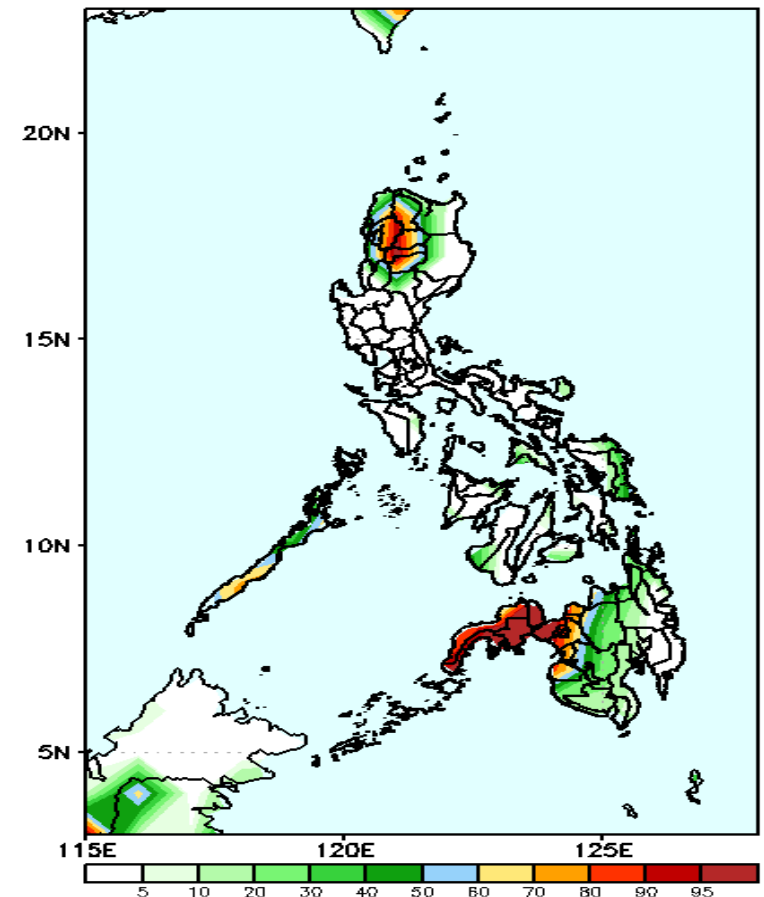
Rainfall deficit of up to 60 mm is likely in most parts of the country during the forecast period.

GEFS Week-1 Exceedance Prob. > 25mm
Valid: 20200420 - 20200426



High probability of rainfall to exceed 25mm in CAR, Eastern Visayas, Palawan, Negros Occidental and western Mindanao while less probability for the rest of the country during the forecast period.

GEFS Week-1 Exceedance Prob. > 50mm
Valid: 20200420 - 20200426

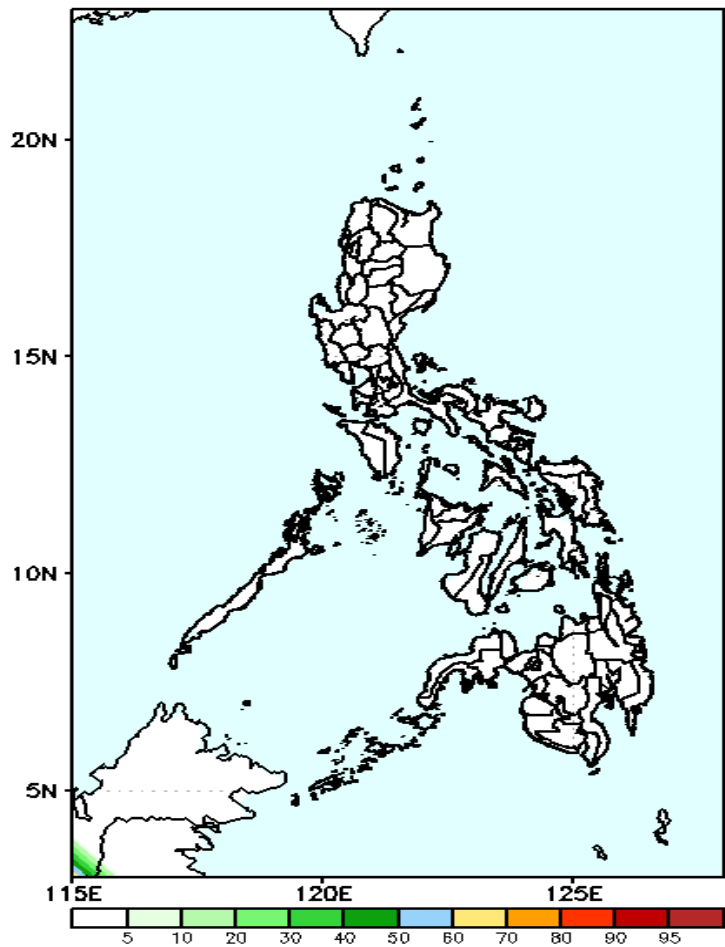
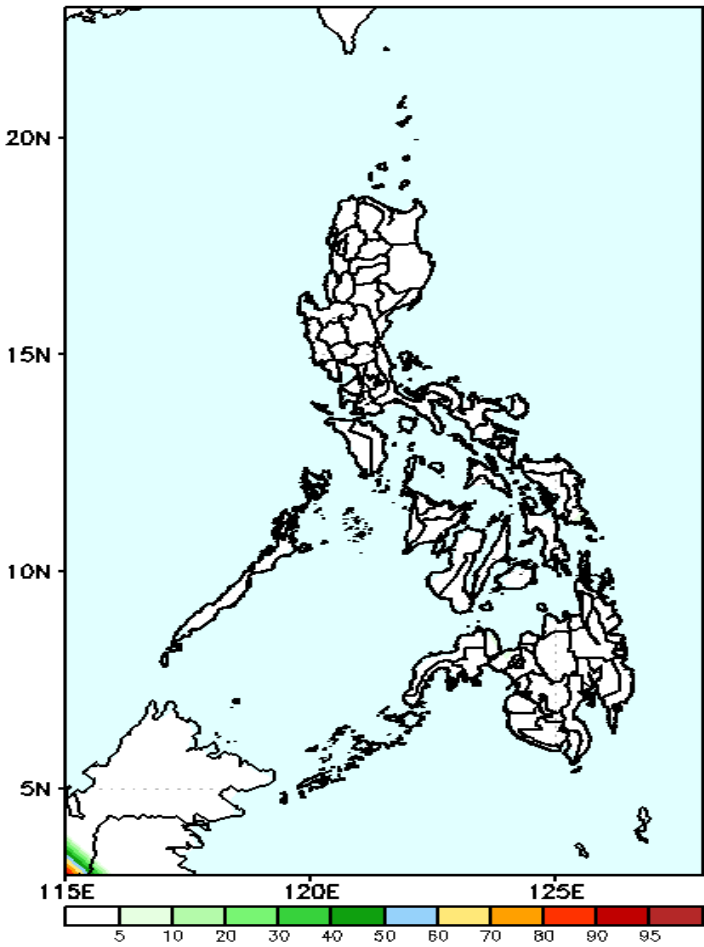
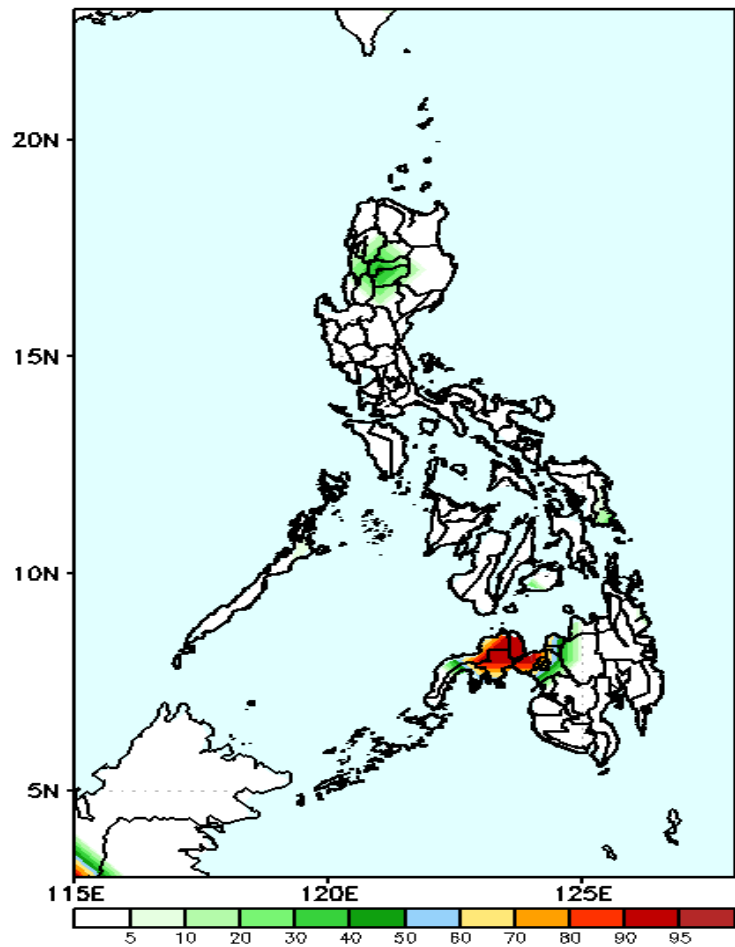


High probability of rainfall to exceed 50mm in CAR and Zamboanga Peninsula while less probability for the rest of the country during the forecast period.

Exceedance Probability > 100/150/200 mm

Week 1: April 20- April 26, 2020

GEFS Week-1 Exceedance Prob. > 100mm GEFS Week-1 Exceedance Prob. > 150mm GEFS Week-1 Exceedance Prob. > 200mm
Valid: 20200420 – 20200426 Valid: 20200420 – 20200426 Valid: 20200420 – 20200426



Less probability of rainfall to exceed 100mm in most parts of the country except in Zamboanga Peninsula where there is high probability during the forecast period.

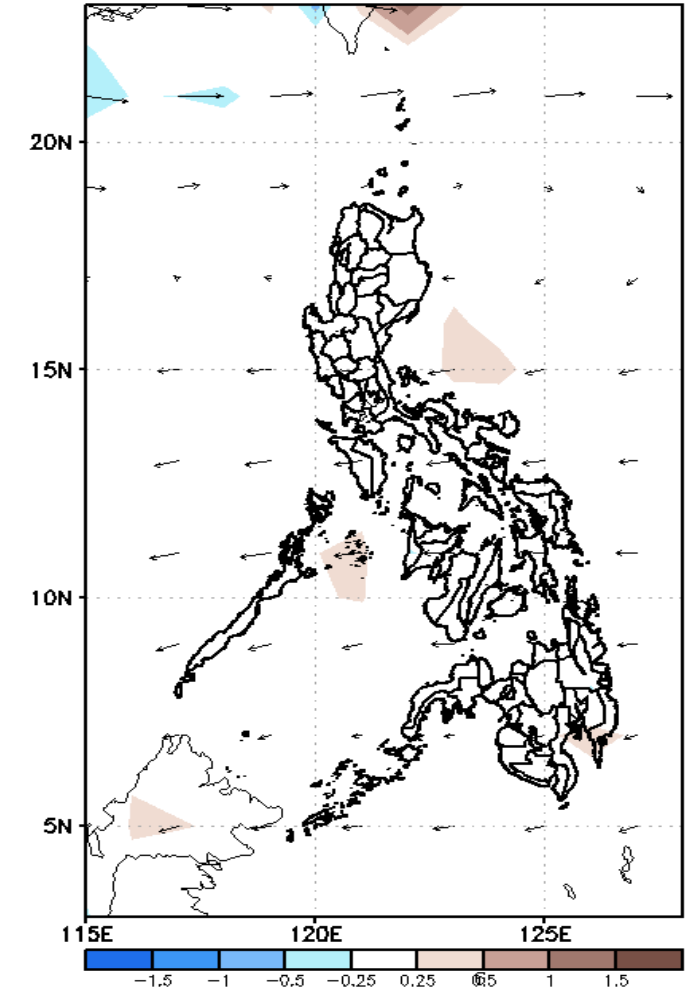
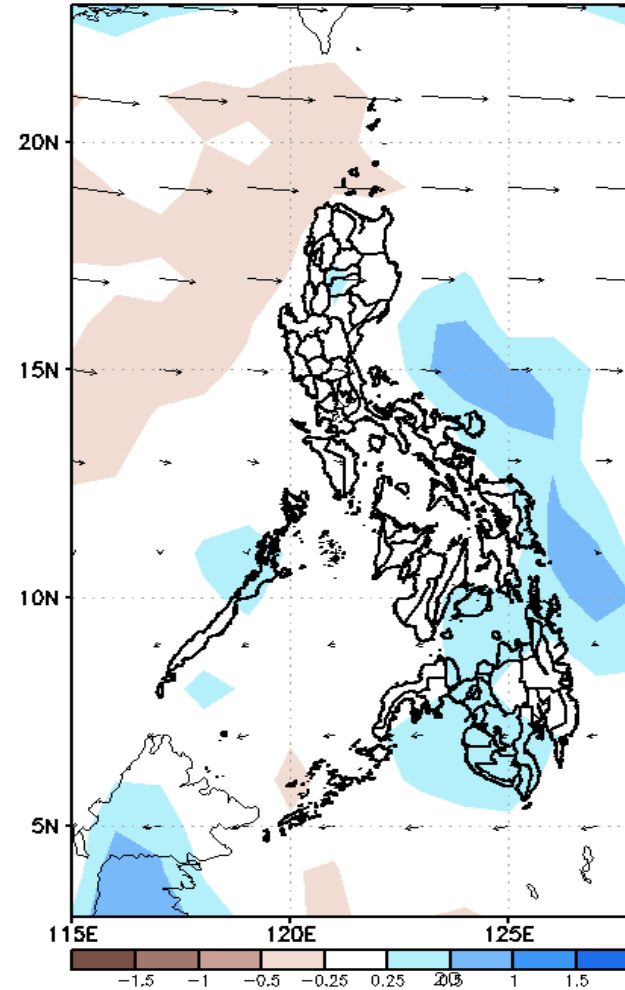
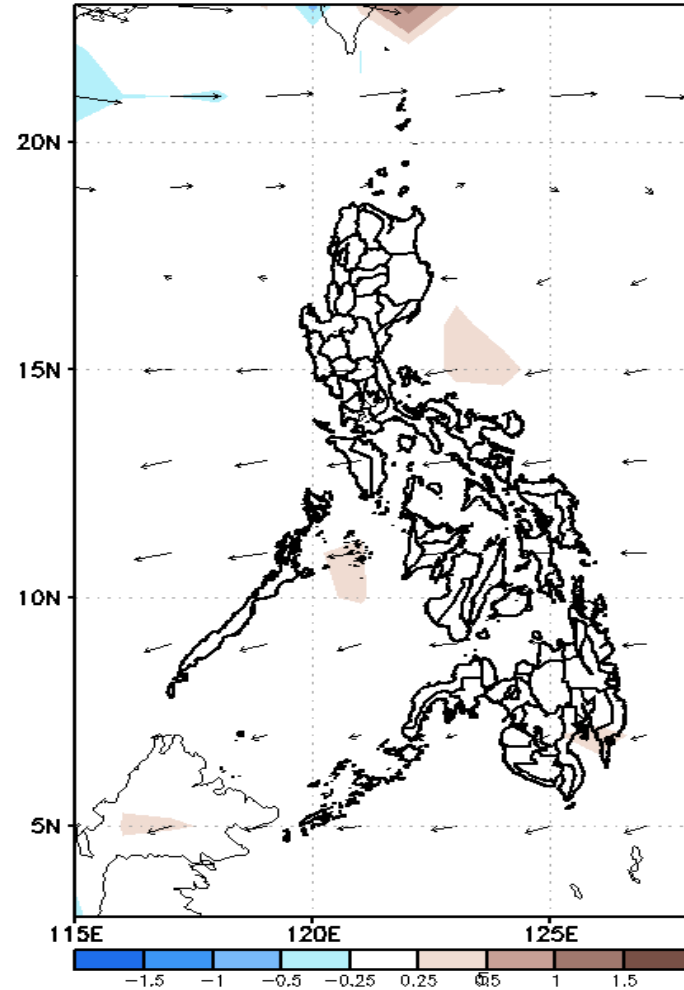
Less probability of rainfall to exceed 150mm in most parts of the country during the forecast period.

Less probability of rainfall to exceed 200mm in most parts of the country during the forecast period.

GEFS Week-2 Forecasts: Divergence & Wind Anomaly

Week 2: April 27- May 03, 2020

GEFS Week-2 850-hPa Divergence and Wind Anom
Valid: 20200427 - 20200503

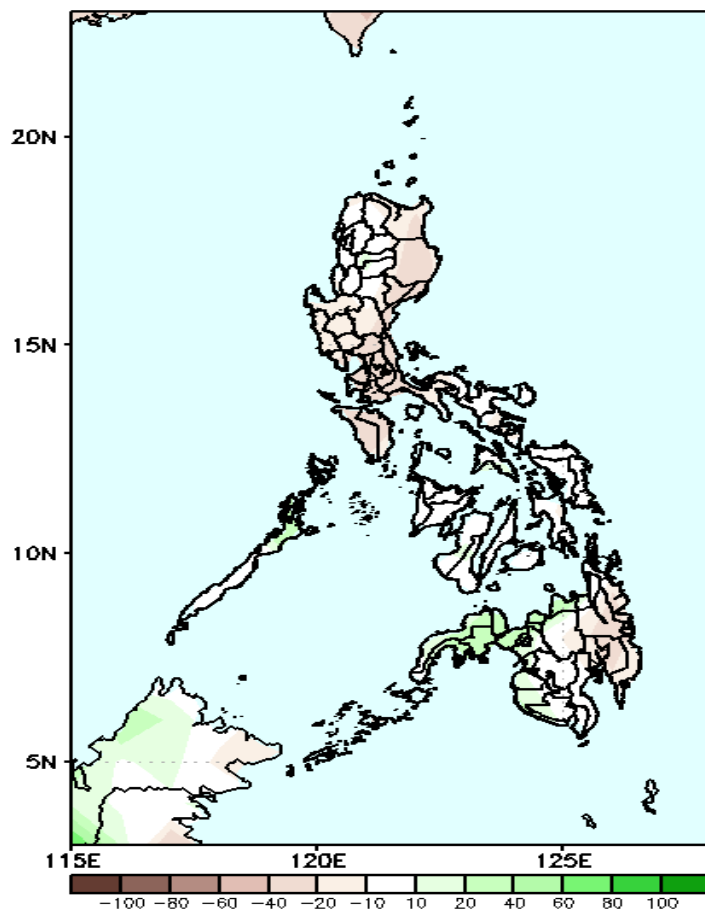


Upper level (750 hPa) Divergence suggest likelihood of precipitation in some parts of Luzon and Visayas and most parts of Mindanao due to localize thunderstorm. Easterlies affecting most parts of the country during the forecast period.

Precipitation Anomaly and Exceedance Probability > 25/50 mm

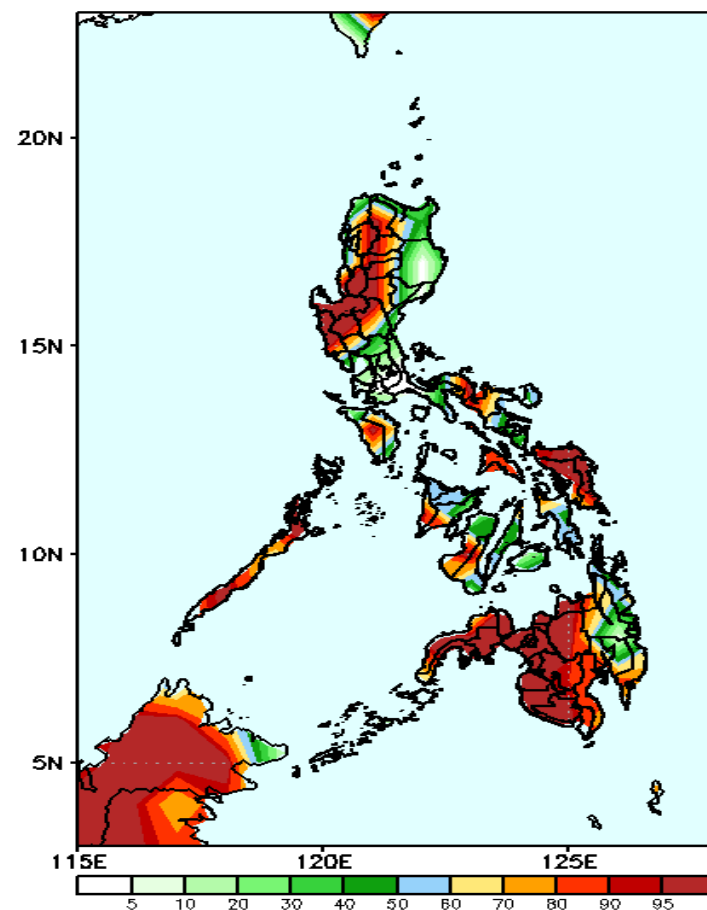
Week 2: April 27- May 03, 2020

GEFS Week-2 Precip Anomaly
Valid: 20200427 - 20200503



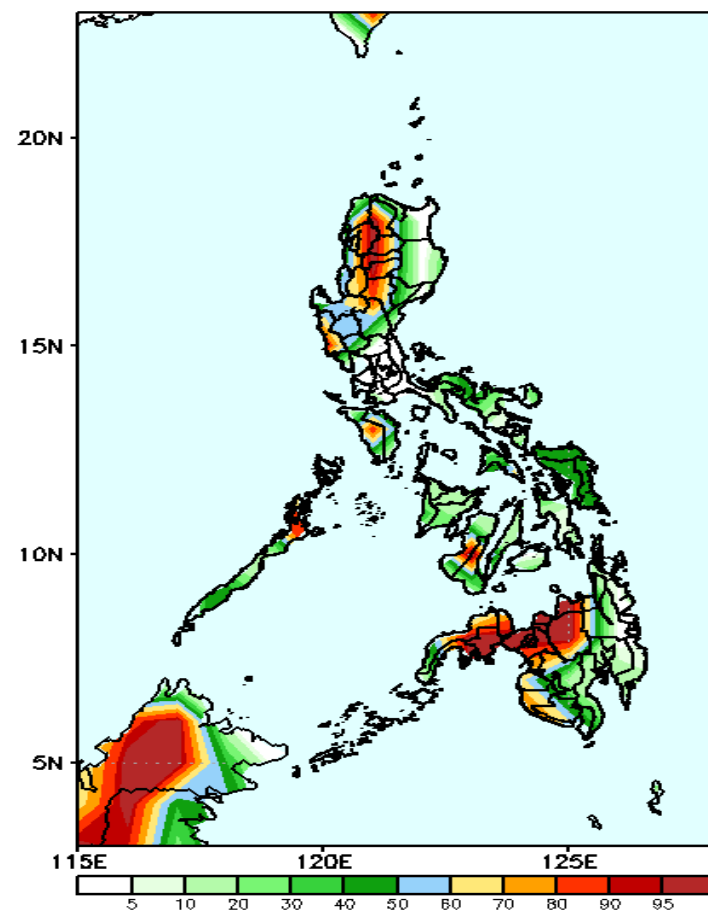
Rainfall deficit of 20-50mm is most likely in most parts of the country during the forecast period.

GEFS Week-2 Exceedance Prob. > 25mm
Valid: 20200427 - 20200503



High probability of rainfall to exceed 25mm in western Luzon, Mindoro, Camarines Norte and Sur, Samar provinces, and most parts of Mindanao (except CARAGA) while 40-60% probability for the rest of the country during the forecast period.

GEFS Week-2 Exceedance Prob. > 50mm
Valid: 20200427 - 20200503



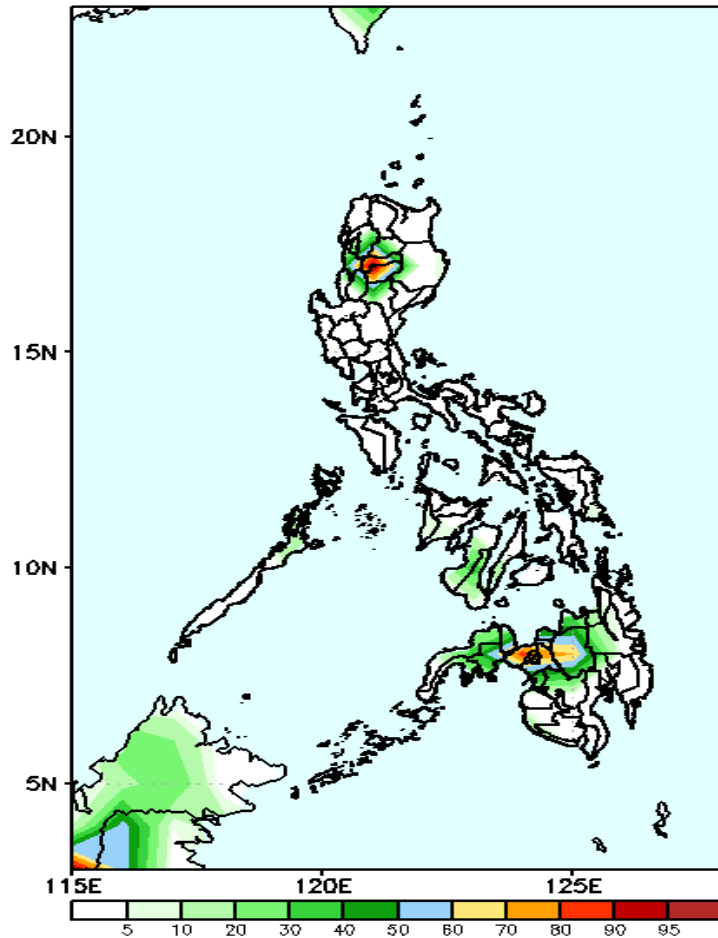
High probability of rainfall to exceed 50mm in Cordillera Region, northern Mindanao and Zamboanga peninsula while less likely for the rest of the country during the forecast period.



Exceedance Probability > 100/150/200 mm

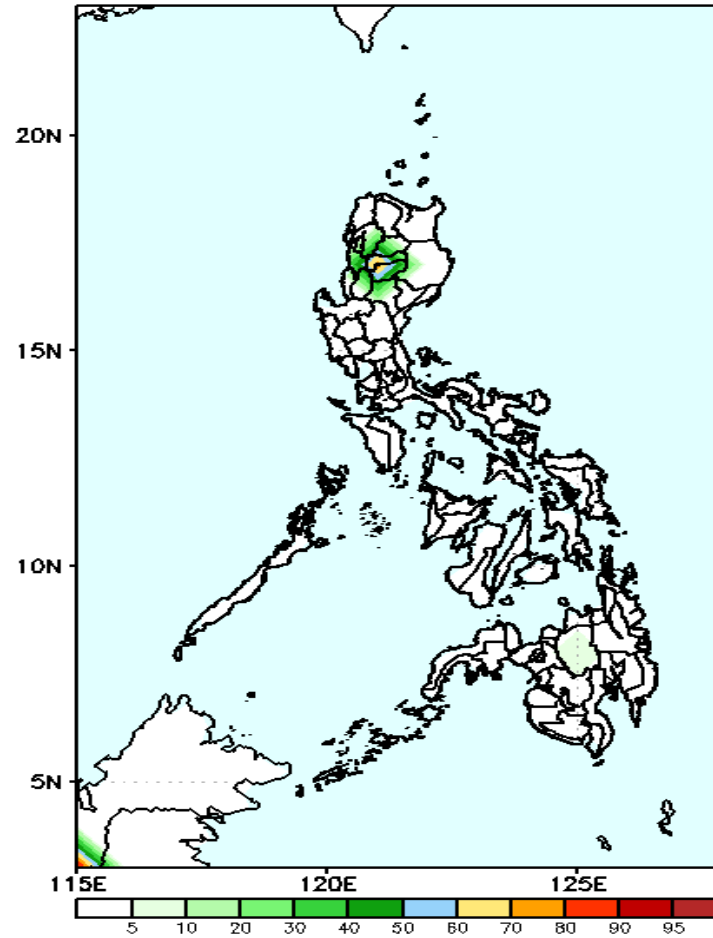
Week 2: April 27- May 03, 2020

GEFS Week-2 Exceedance Prob. > 100mm
Valid: 20200427 - 20200503

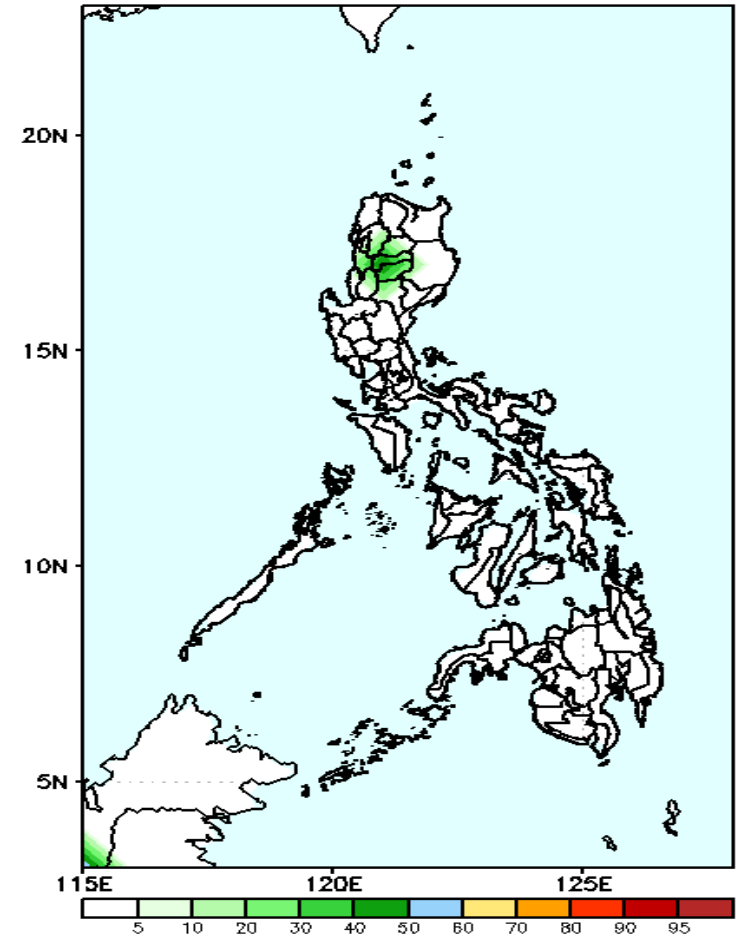


Less probability of rainfall to exceed 100mm in most parts of the country except in CAR and northern Mindanao where there is 60-90% chance during the forecast period.

GEFS Week-2 Exceedance Prob. > 150mm
Valid: 20200427 - 20200503



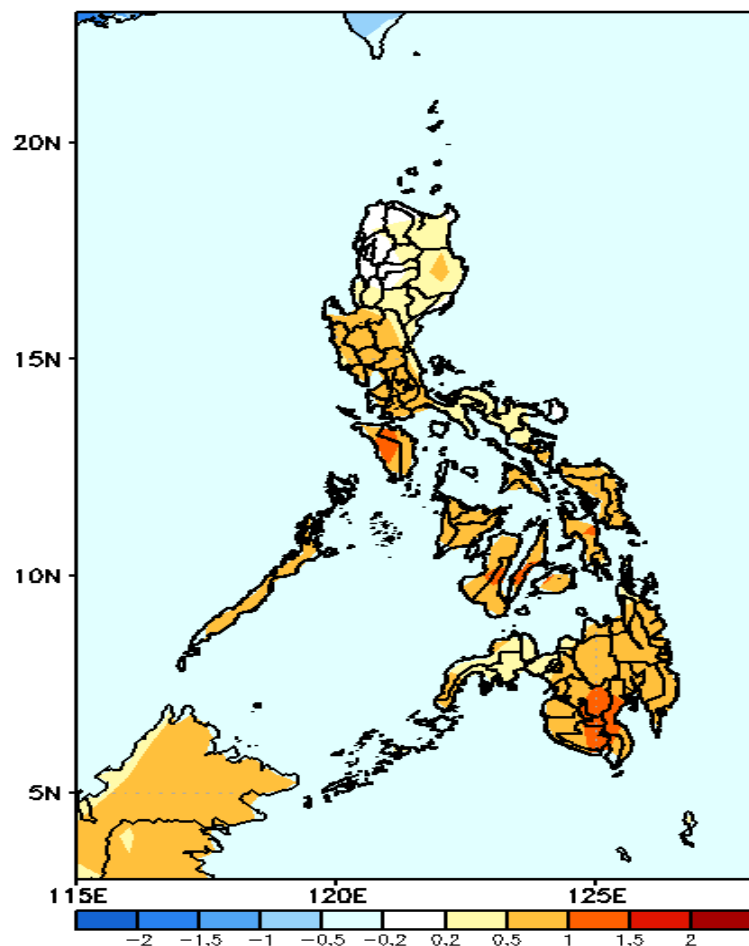
GEFS Week-2 Exceedance Prob. > 200mm
Valid: 20200427 - 20200503



Less probability of rainfall to exceed 200 mm in most parts of the country during the forecast period.

GEFS Week-1 & 2 Forecasts: T2m Anomaly

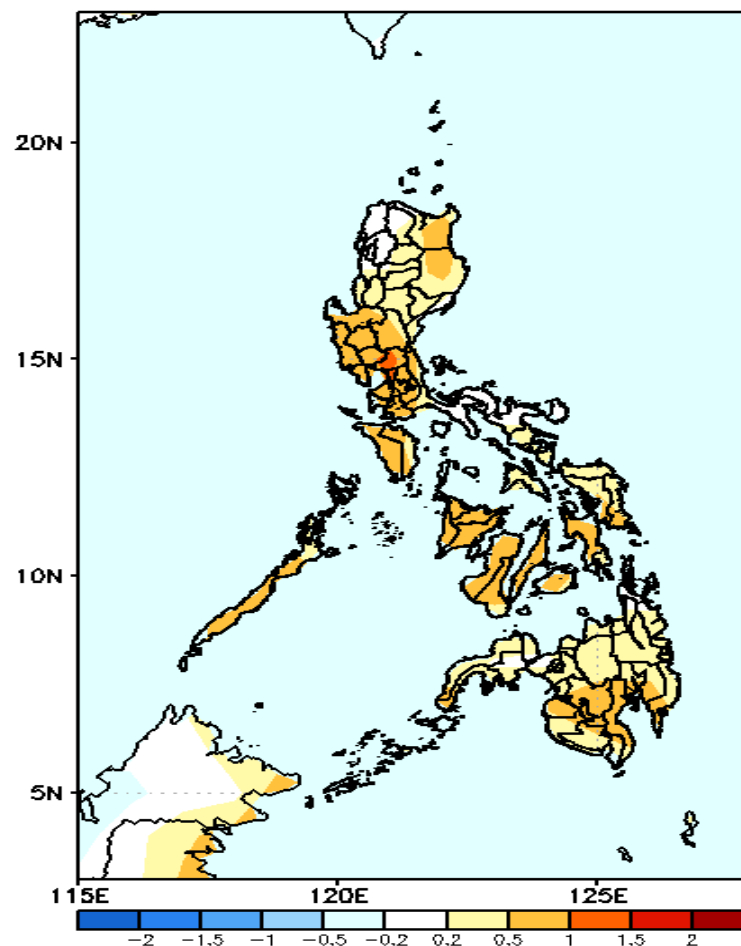
GEFS Week-1 T2m Anomaly
Valid: 20200420 - 20200426



2m Temperature Week 1: April 20- April 26, 2020

Average to slightly warmer than average surface air temperature will likely experience in Luzon while slightly warmer to warmer than average surface air temperature is expected in Visayas and Mindanao during the forecast period.

GEFS Week-2 T2m Anomaly
Valid: 20200427 - 20200503



2m Temperature Week 2 April 27- May 03, 2020

Average to slightly warmer than average surface air temperature will likely experience in most parts of the country during the forecast period.