



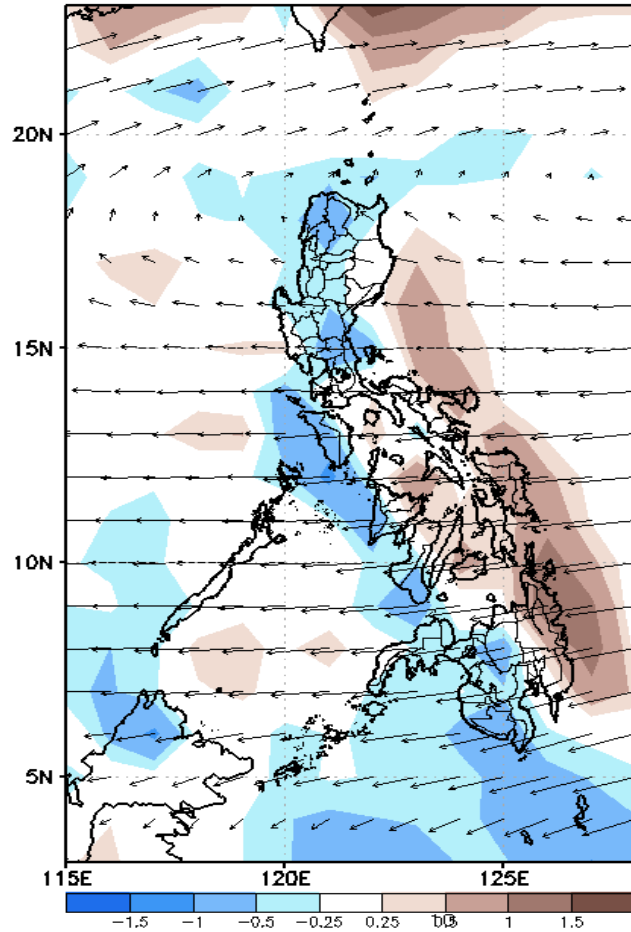
# Week 1 & Week 2 Forecast for the Philippines using GEFS Model



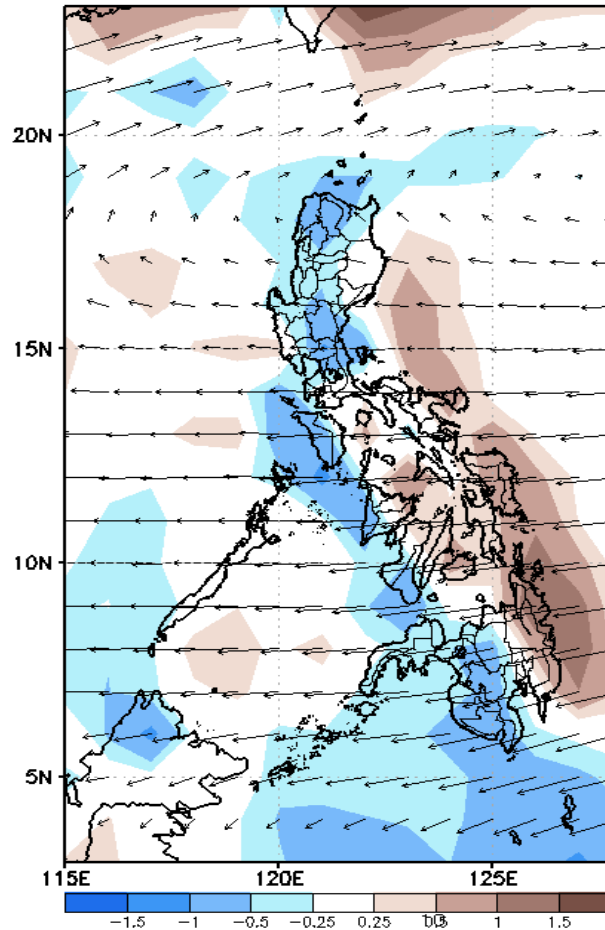
# GEFS Week-1 Forecasts: Divergence & Wind Anomaly

Week 1: Feb 21-27, 2022

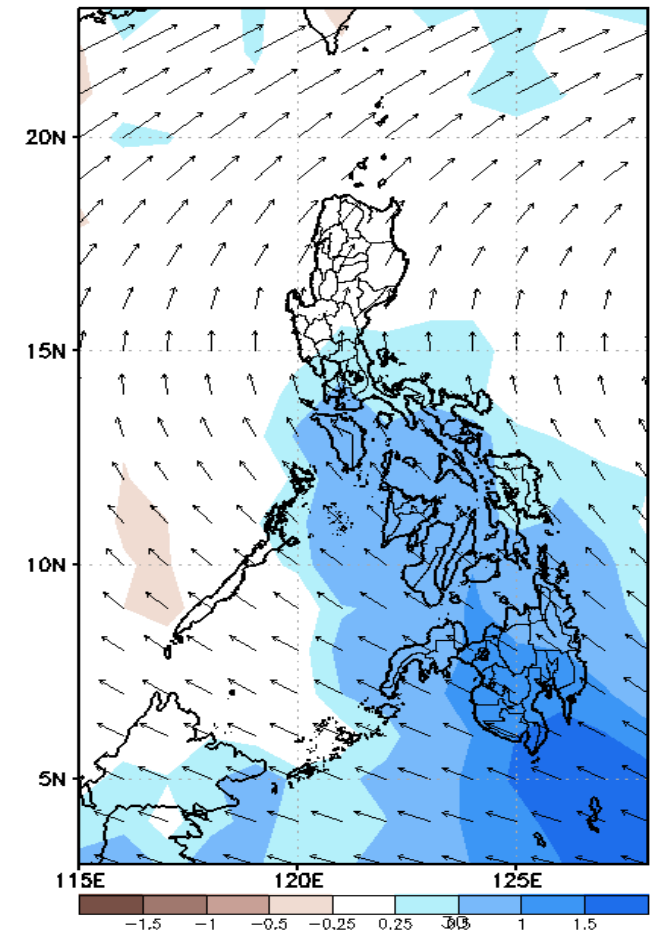
GEFS Week-1 850-hPa Divergence and Wind Anom  
Valid: 20220221 - 20220227



GEFS Week-1 700-hPa Divergence and Wind Anom  
Valid: 20220221 - 20220227



GEFS Week-1 200-hPa Divergence and Wind Anom  
Valid: 20220221 - 20220227

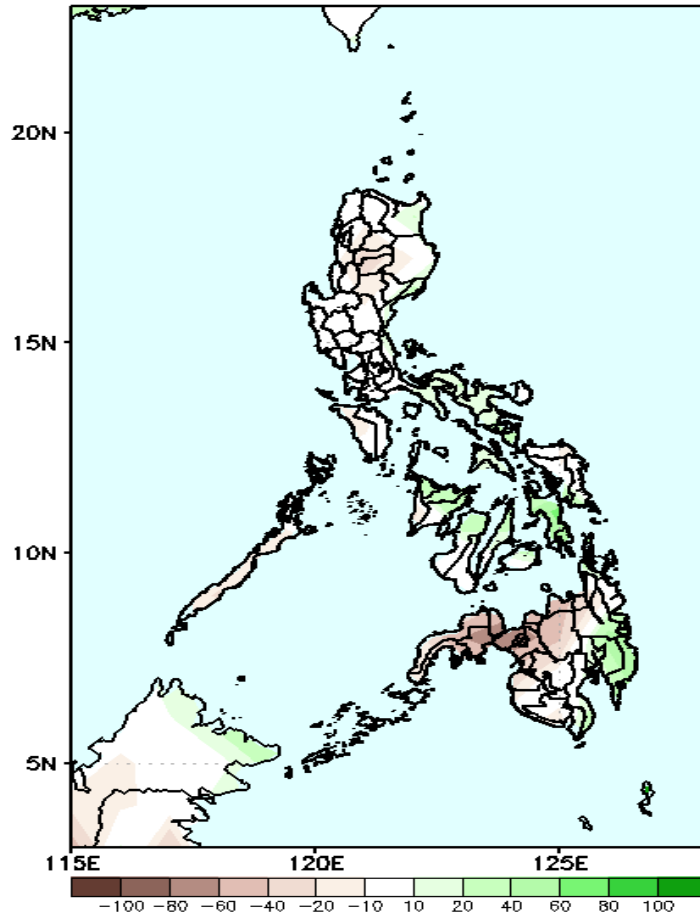


Upper and low level Divergence suggest a likelihood of light to moderate precipitation in most parts of Southern Luzon, Visayas and Mindanao. Northeast Monsoon affecting Northern Luzon while Easterlies affecting the rest of the country during the forecast period.

# Precipitation Anomaly and Exceedance Probability > 25/50 mm

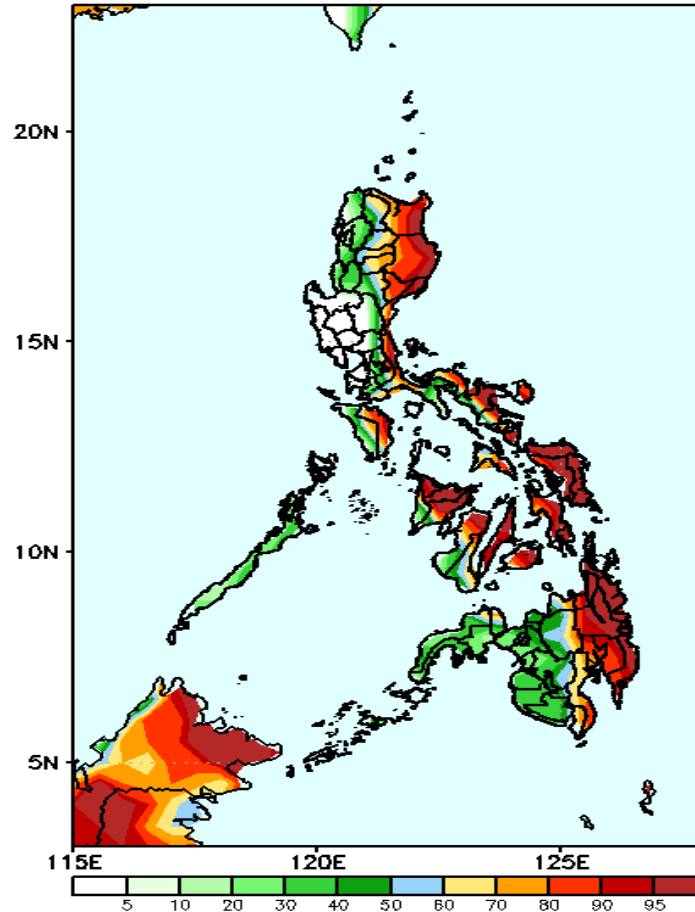
**Week 1: Feb 21-27, 2022**

GEFS Week-1 Precip Anomaly  
Valid: 20220221 - 20220227



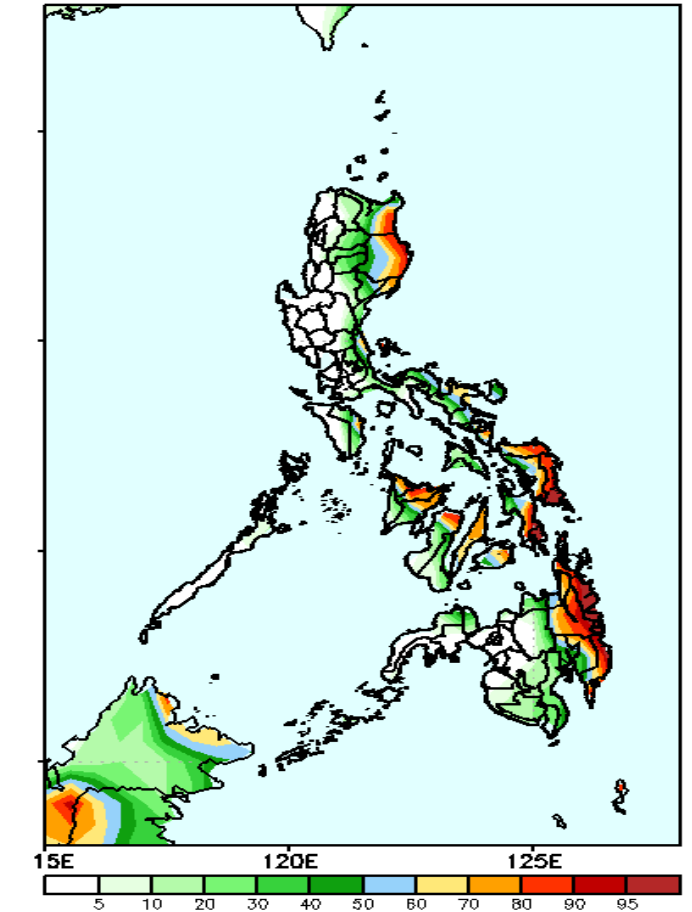
Rainfall deficit of 30-70mm in northern Mindanao while 20-50mm increase of rainfall in Davao Region & Southern Leyte is expected during the forecast period.

GEFS Week-1 Exceedance Prob. > 25mm  
Valid: 20220221 - 20220227



High probability of rainfall to exceed 25mm in the eastern parts of Luzon & Mindanao, Occidental Mindoro and most parts of Visayas while less likely for the rest of the country during the forecast period.

FS Week-1 Exceedance Prob. > 50mm  
Valid: 20220221 - 20220227

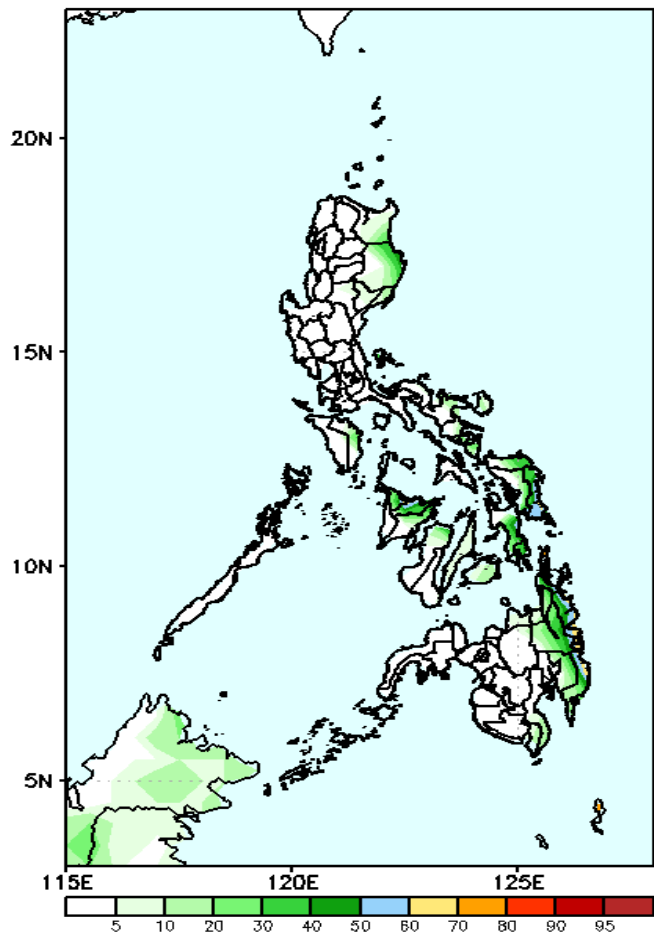


High probability of rainfall to exceed 50mm in the eastern parts of Cagayan, Isabela, Eastern Samar, Southern Leyte, Roxas, Capiz, Cebu, Bohol and eastern Mindanao while less likely for the rest of the country during the forecast period.

# Exceedance Probability > 100/150/200 mm

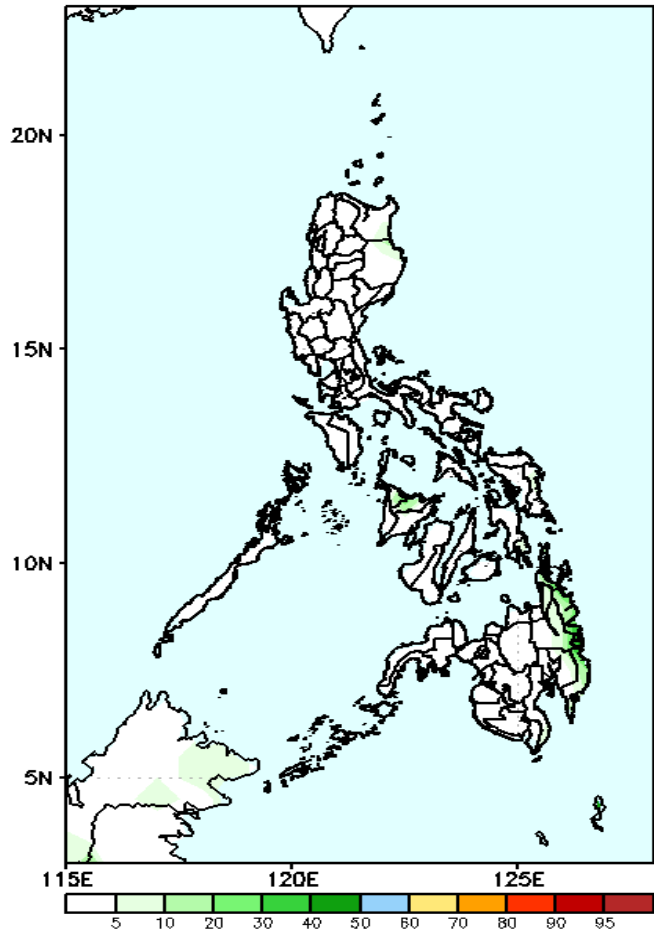
## Week 1: Feb 21-27, 2022

GEFS Week-1 Exceedance Prob. > 100mm  
Valid: 20220221 – 20220227



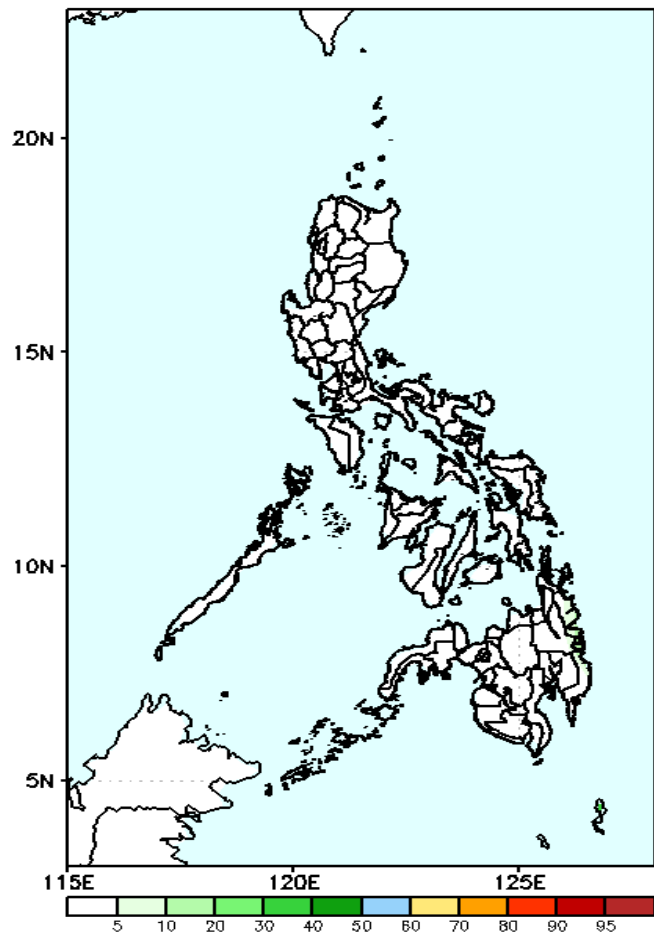
Low probability of rainfall to exceed 100mm in most parts of the country during the forecast period.

GEFS Week-1 Exceedance Prob. > 150mm  
Valid: 20220221 – 20220227



Low probability of rainfall to exceed 150mm in most parts of the country during the forecast period.

GEFS Week-1 Exceedance Prob. > 200mm  
Valid: 20220221 – 20220227

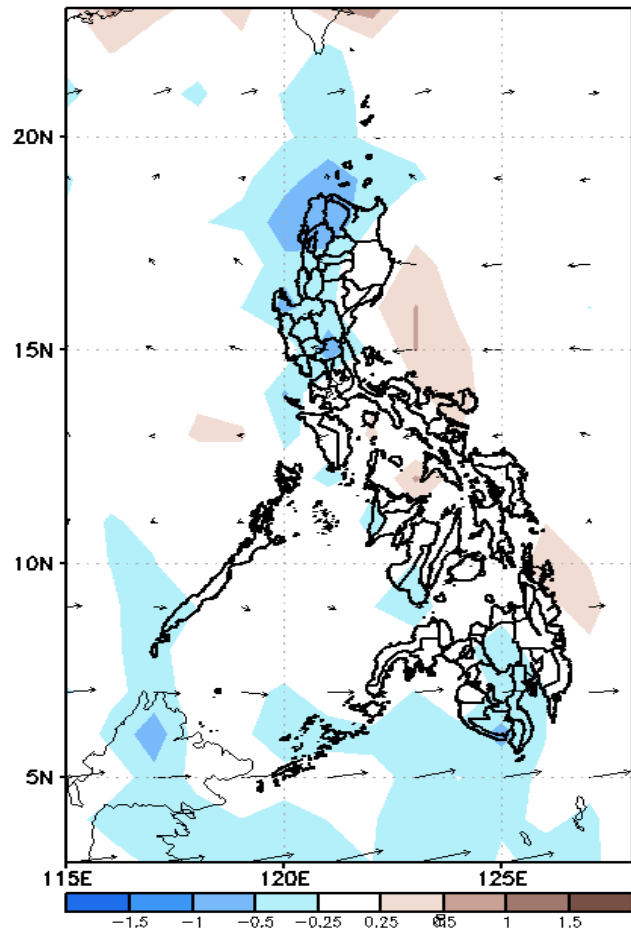


Low probability of rainfall to exceed 200mm in most parts of the country during the forecast period.

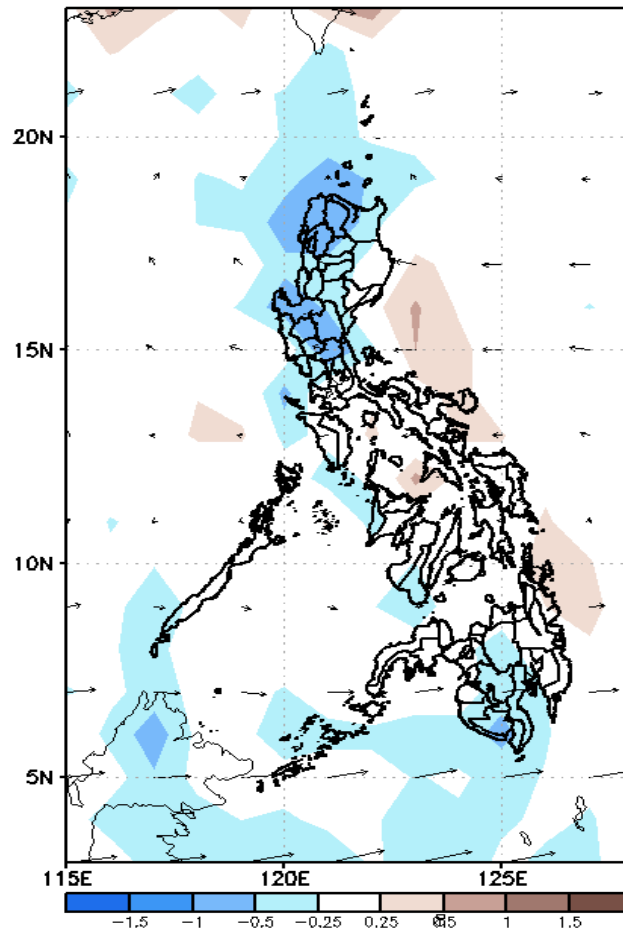
# GEFS Week-2 Forecasts: Divergence & Wind Anomaly

**Week 2: Feb 28- Mar 06, 2022**

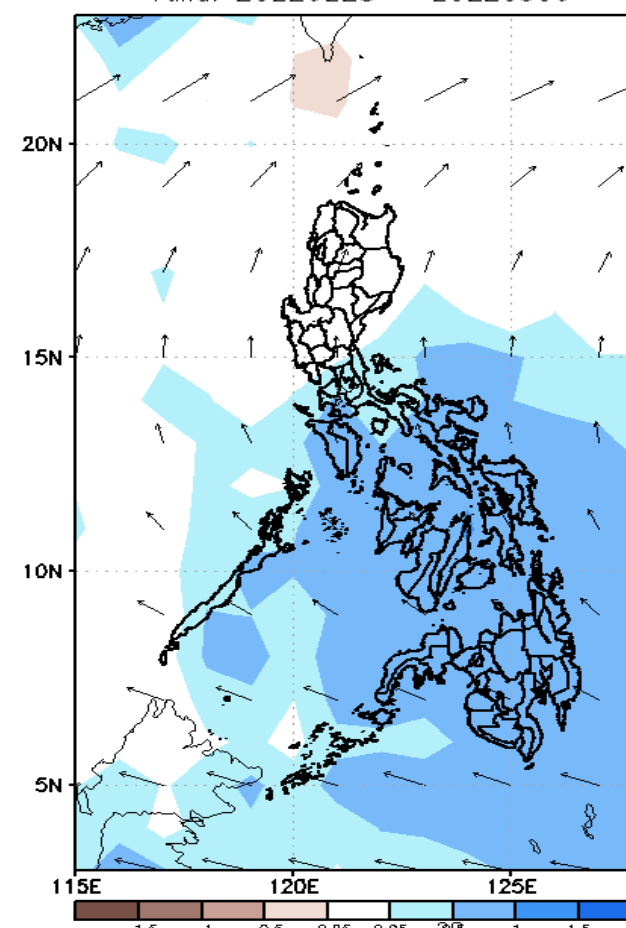
GEFS Week-2 850-hPa Divergence and Wind Anom  
Valid: 20220228 - 20220306



GEFS Week-2 700-hPa Divergence and Wind Anom  
Valid: 20220228 - 20220306



GEFS week-2 200-hPa Divergence and Wind Anom  
Valid: 20220228 - 20220306

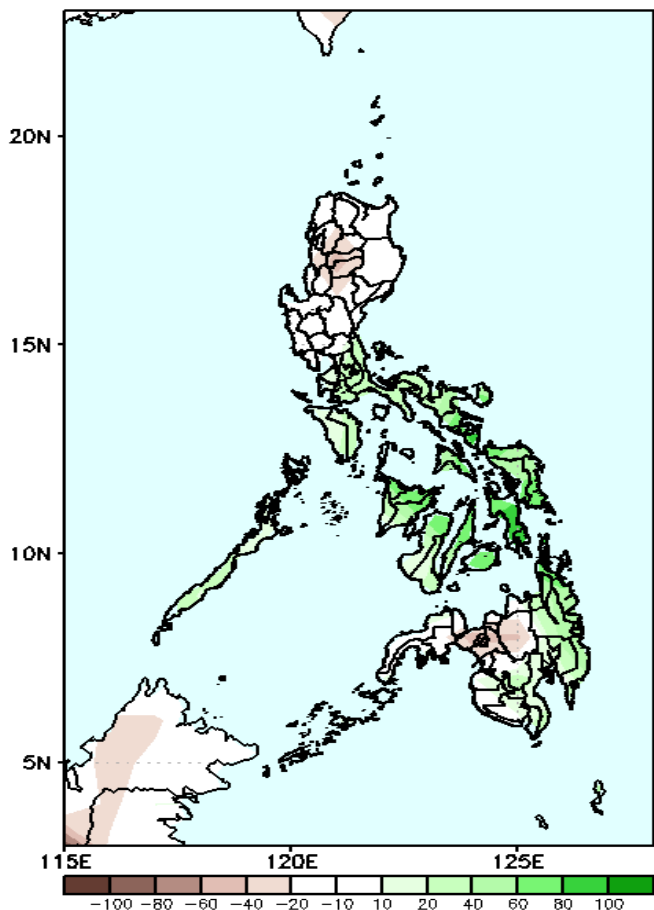


Upper and low level Divergence suggest a likelihood of light to moderate precipitation in most parts of Southern Luzon, Visayas and Mindanao. Easterlies affecting most parts of the country during the forecast period.

# Precipitation Anomaly and Exceedance Probability > 25/50 mm

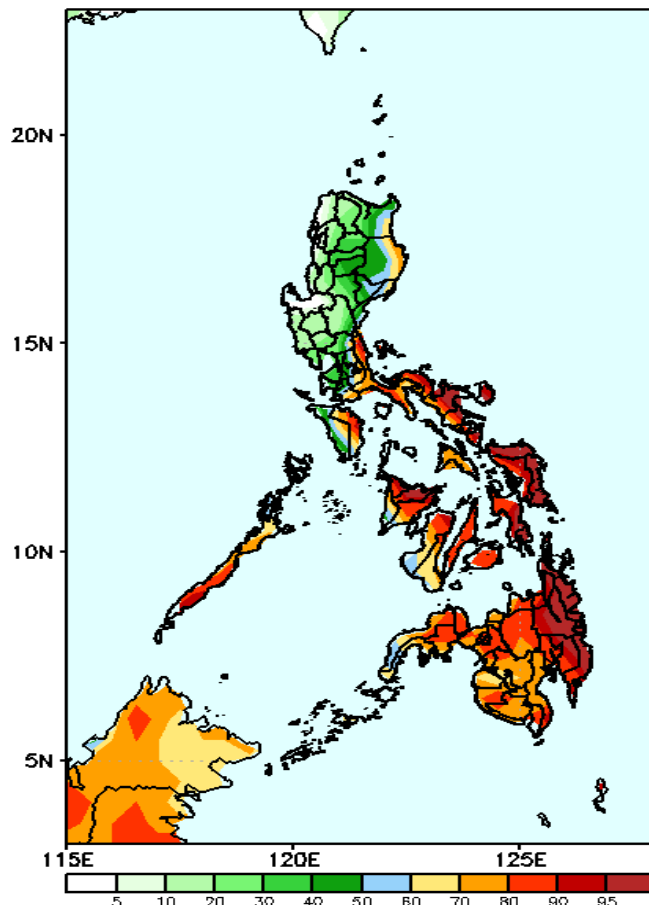
**Week 2: Feb 28- Mar 06, 2022**

GEFS Week-2 Precip Anomaly  
Valid: 20220228 - 20220306



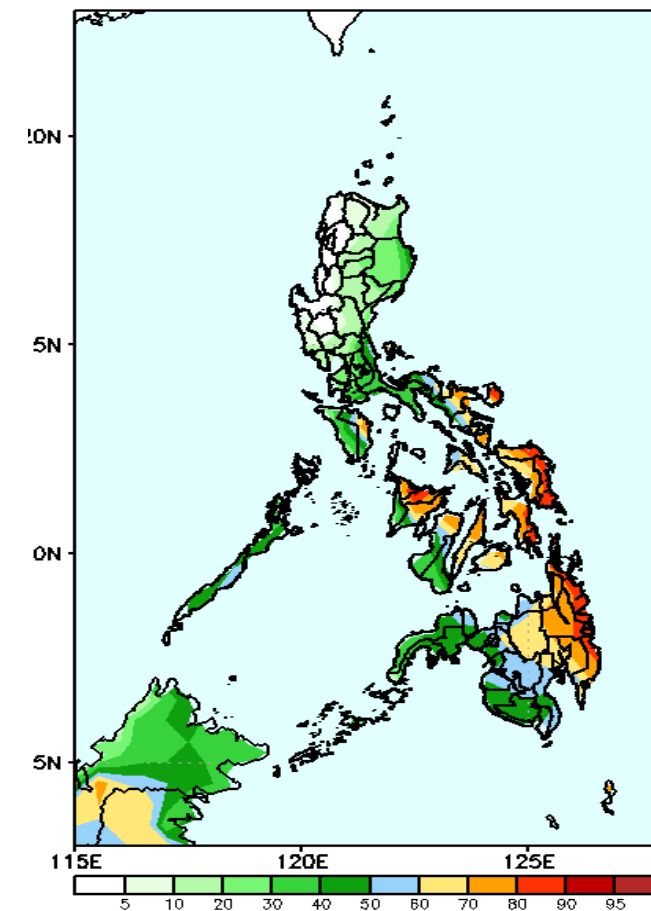
Increase of rainfall of 40-100mm is expected in most parts of Southern Luzon & Visayas and eastern Mindanao while rainfall deficit of 20-50mm in Cordillera Region and northern Mindanao during the forecast period.

GEFS Week-2 Exceedance Prob. > 25mm  
Valid: 20220228 - 20220306



High probability of rainfall to exceed 25mm in eastern Isabela and most parts Southern Luzon, Visayas and Mindanao while less likely for the rest of Luzon during the forecast period.

GEFS Week-2 Exceedance Prob. > 50mm  
Valid: 20220228 - 20220306



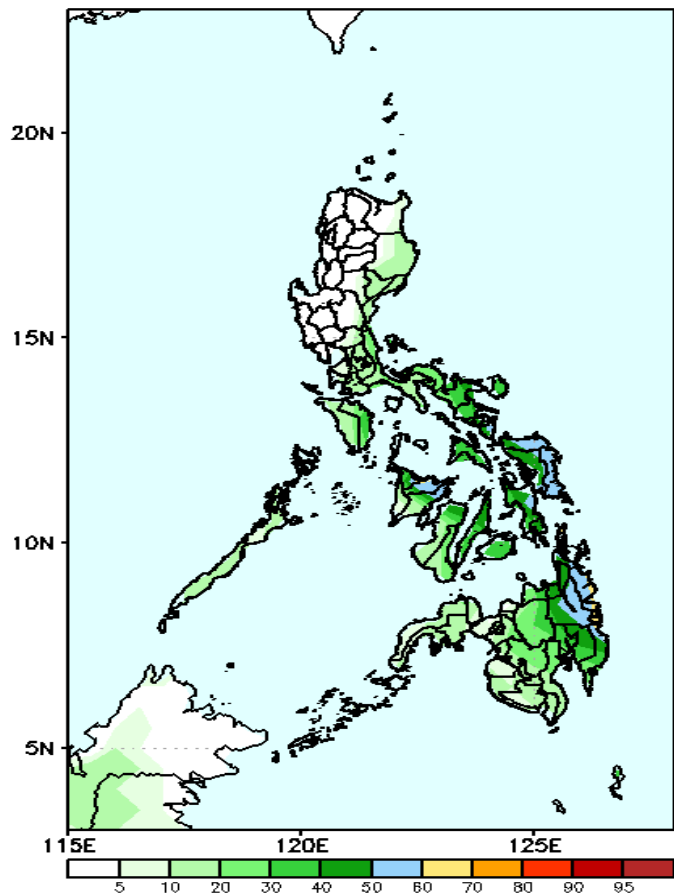
60-95% probability of rainfall to exceed 50mm in most parts of Bicol Region, Visayas and eastern Mindanao while less likely for the rest of the country during the forecast period



# Exceedance Probability > 100/150/200 mm

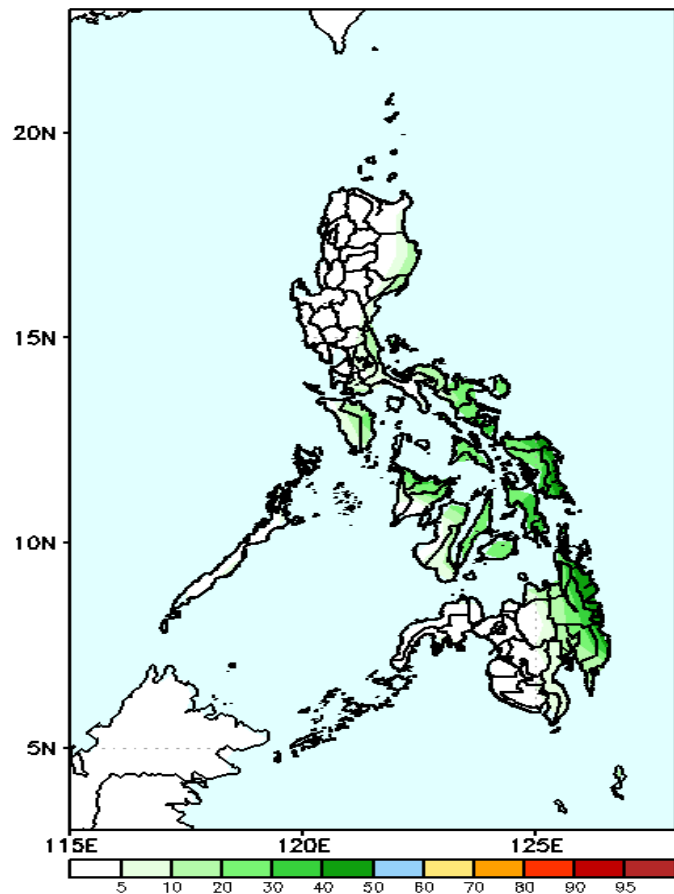
Week 2: Feb 28- Mar 06, 2022

GEFS Week-2 Exceedance Prob. > 100mm  
Valid: 20220228 - 20220306



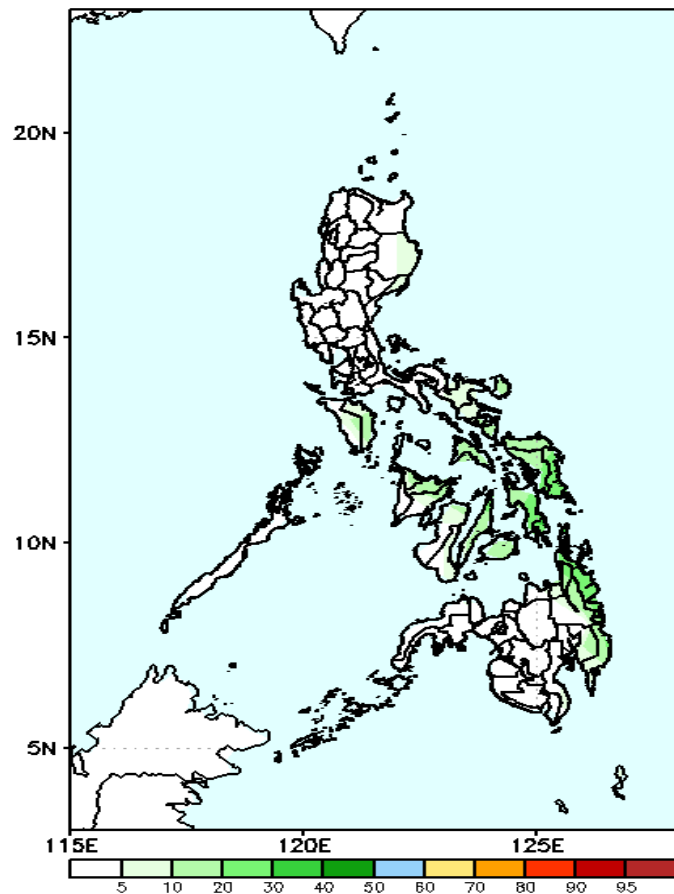
Low probability of rainfall to exceed 100mm in most parts of the country during the forecast period.

GEFS Week-2 Exceedance Prob. > 150mm  
Valid: 20220228 - 20220306



Low probability of rainfall to exceed 150mm in most parts of the country during the forecast period.

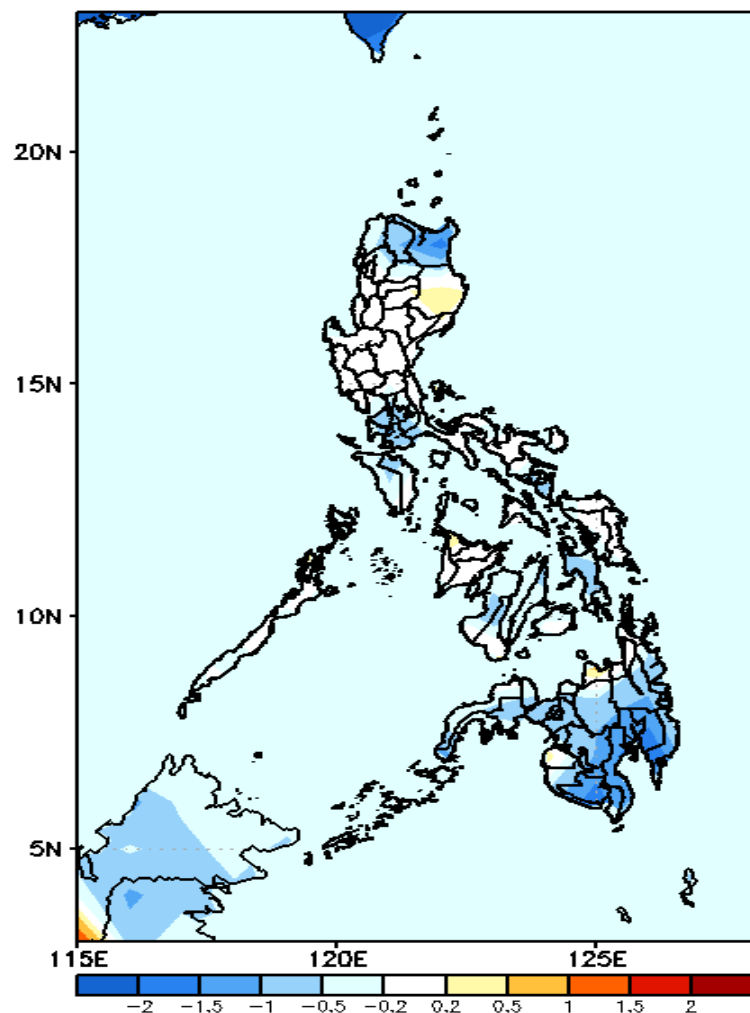
GEFS Week-2 Exceedance Prob. > 200mm  
Valid: 20220228 - 20220306



Low probability of rainfall to exceed 200mm in most parts of the country during the forecast period.

# GEFS Week-1 & 2 Forecasts: T2m Anomaly

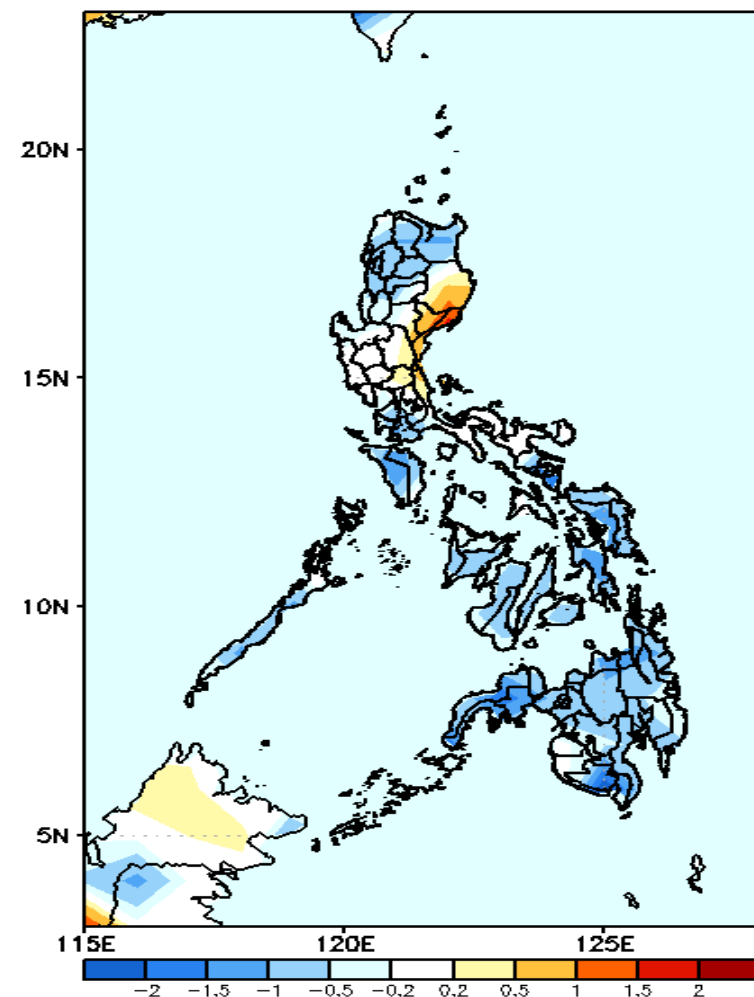
GEFS Week-1 T2m Anomaly  
Valid: 20220221 – 20220227



## 2m Temperature Week 1: Feb 21-27, 2022

Average to slightly cooler surface air temperature will likely experience in most parts of the country during the forecast period.

GEFS Week-2 T2m Anomaly  
Valid: 20220228 – 20220306



## 2m Temperature Week 2: Feb 28- Mar 06, 2022

Slightly cooler to cooler than average surface air temperature will likely experience in most parts of the country except in Isabela, Quirino & Aurora where slightly warmer than average temperature is expected during the forecast period.