



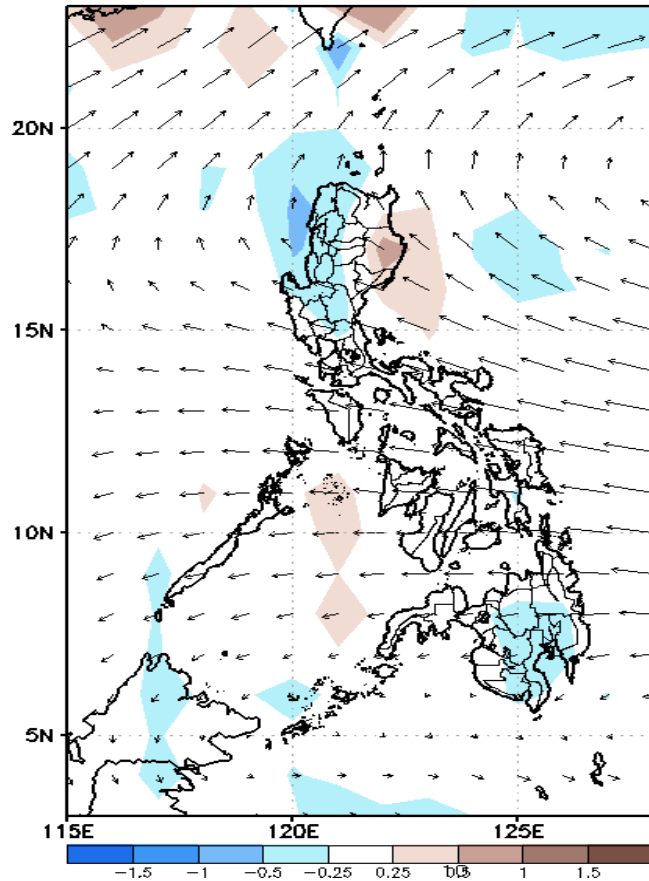
Week 1 & Week 2 Forecast for the Philippines using GEFS Model



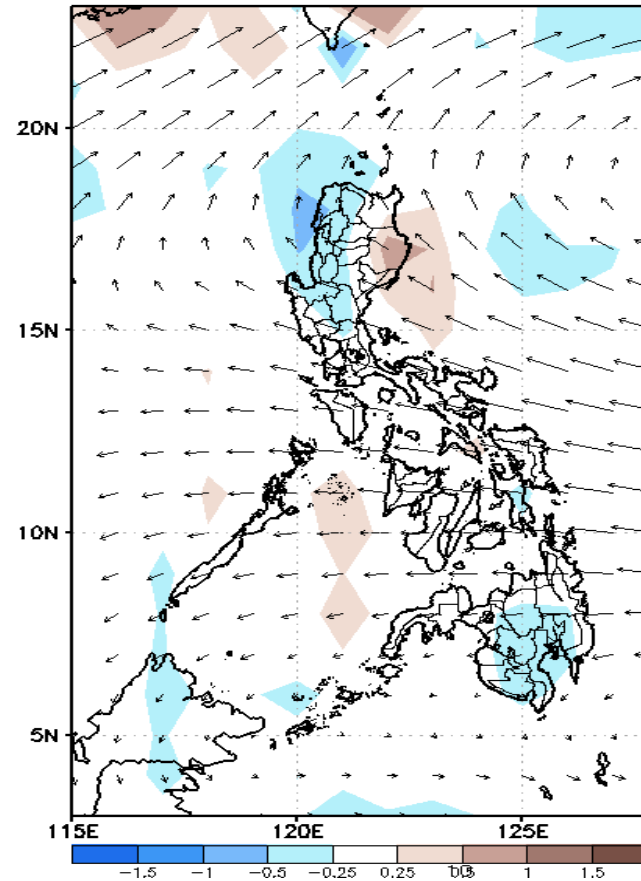
GEFS Week-1 Forecasts: Divergence & Wind Anomaly

Week 1: Jan 21-27, 2022

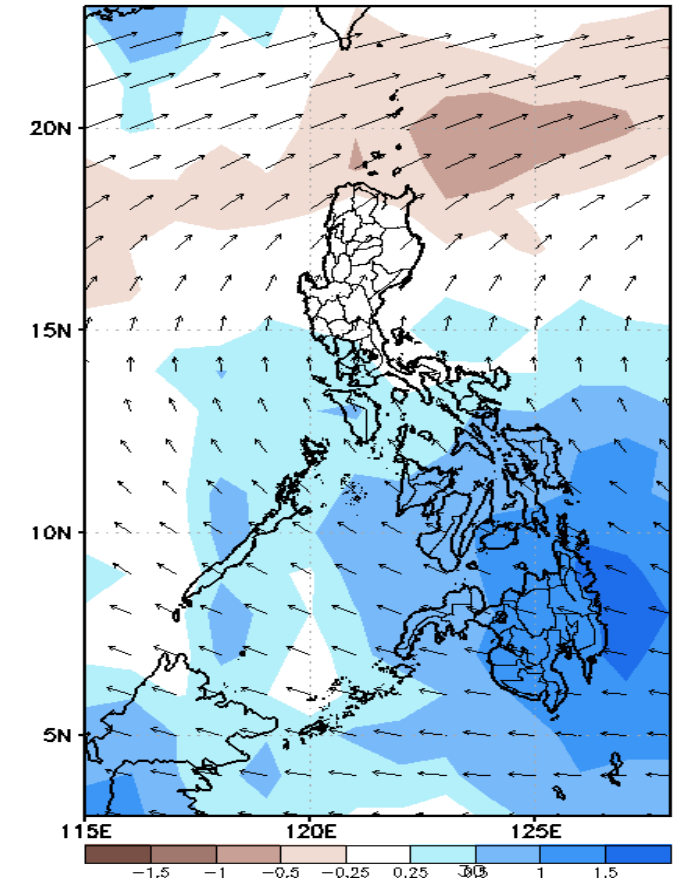
GEFS Week-1 850-hPa Divergence and Wind Anom
Valid: 20220121 - 20220127



GEFS Week-1 700-hPa Divergence and Wind Anom
Valid: 20220121 - 20220127



GEFS Week-1 200-hPa Divergence and Wind Anom
Valid: 20220121 - 20220127

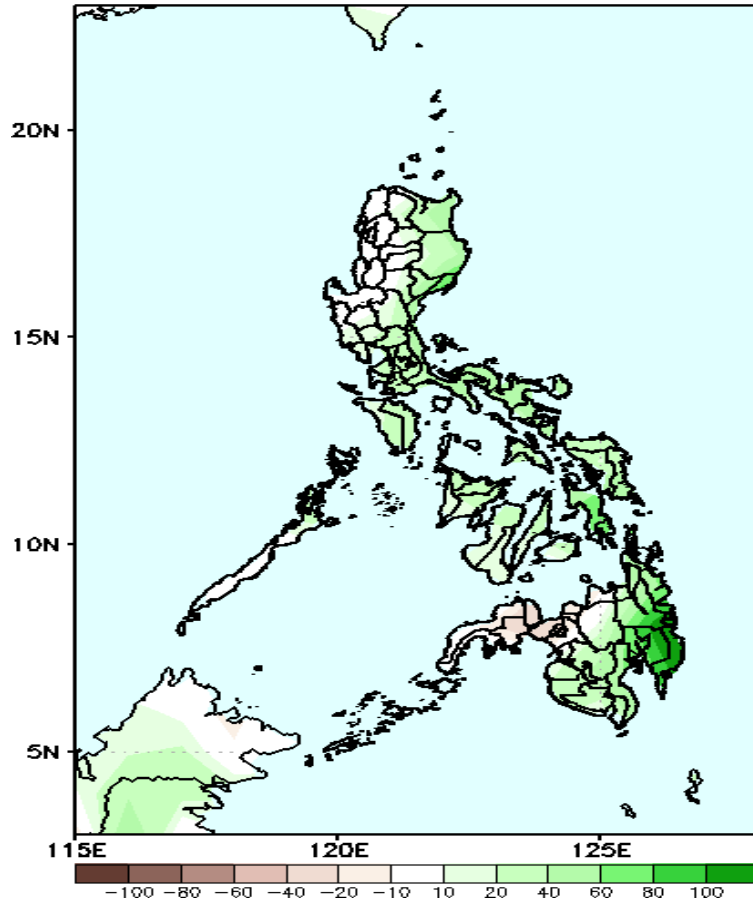


Upper and low level Divergence suggest a likelihood of light to moderate precipitation in some parts of Southern Luzon and most parts of Visayas and Mindanao. Northeast Monsoon affecting Northern Luzon while Easterlies affecting the rest of the country during the forecast period.

Precipitation Anomaly and Exceedance Probability > 25/50 mm

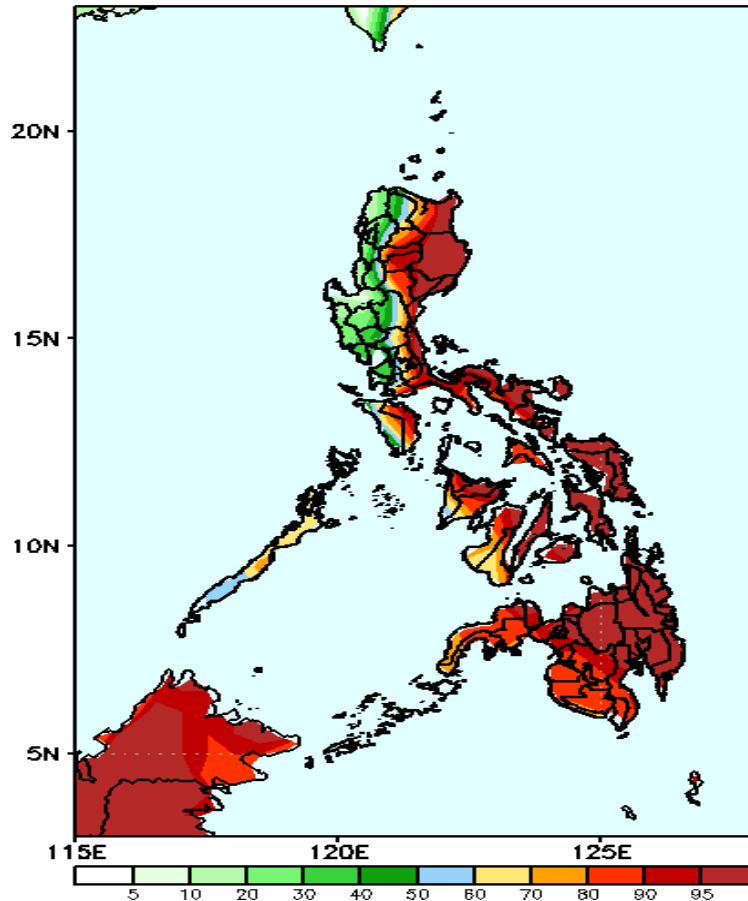
Week 1: Jan 21-27, 2022

GEFS Week-1 Precip Anomaly
Valid: 20220121 - 20220127



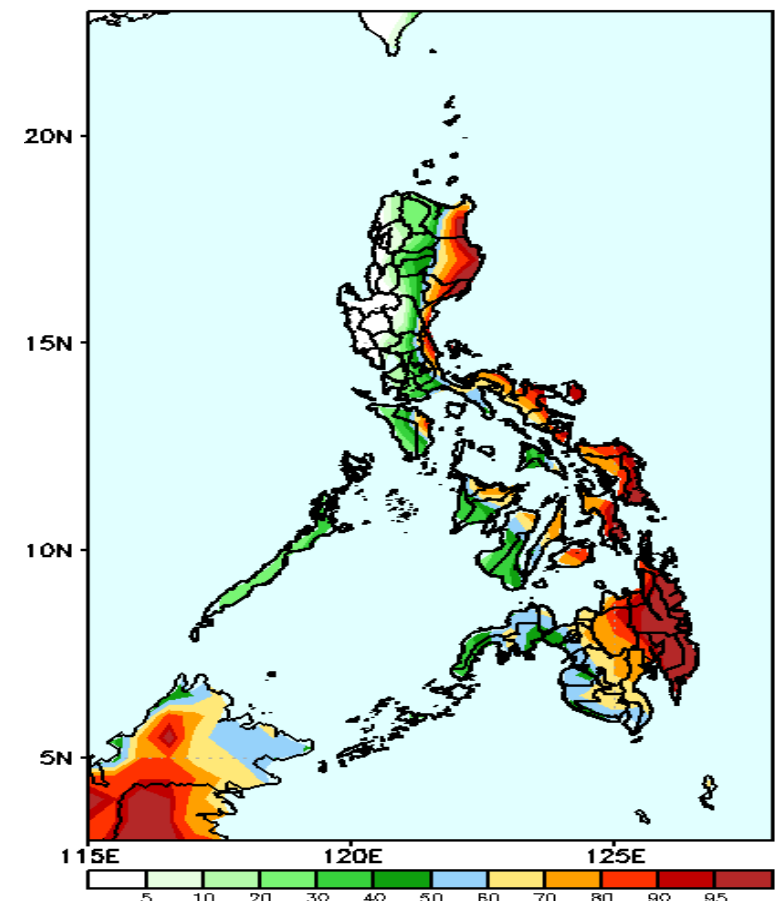
Increase of rainfall of 20-60mm is expected in the eastern parts of Luzon and Visayas and up to 100mm in CARAGA and Davao Region during the forecast period.

GEFS Week-1 Exceedance Prob. > 25mm
Valid: 20220121 - 20220127



High probability of rainfall to exceed 25mm in most parts of the country except in the western section of Luzon where there is low probability during the forecast period.

GEFS Week-1 Exceedance Prob. > 50mm
Valid: 20220121 - 20220127

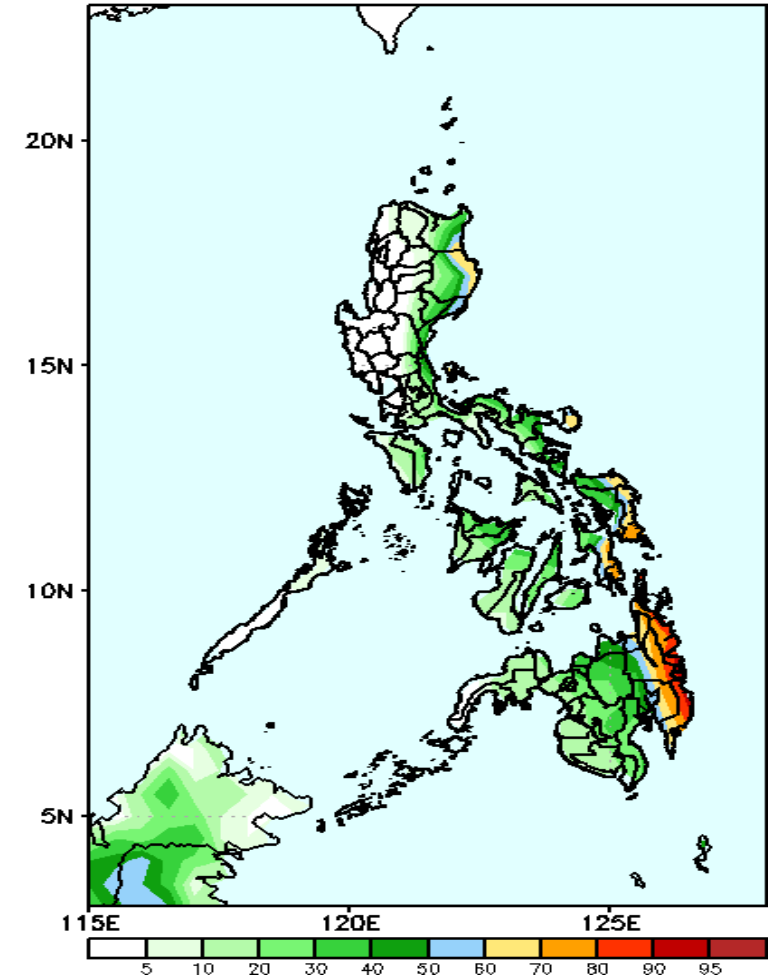


High probability of rainfall to exceed 50mm in the eastern parts of Luzon, Eastern & Central Visayas, eastern parts of Panay & Negros Island and most parts of Mindanao while less likely for the rest of the country during the forecast period.

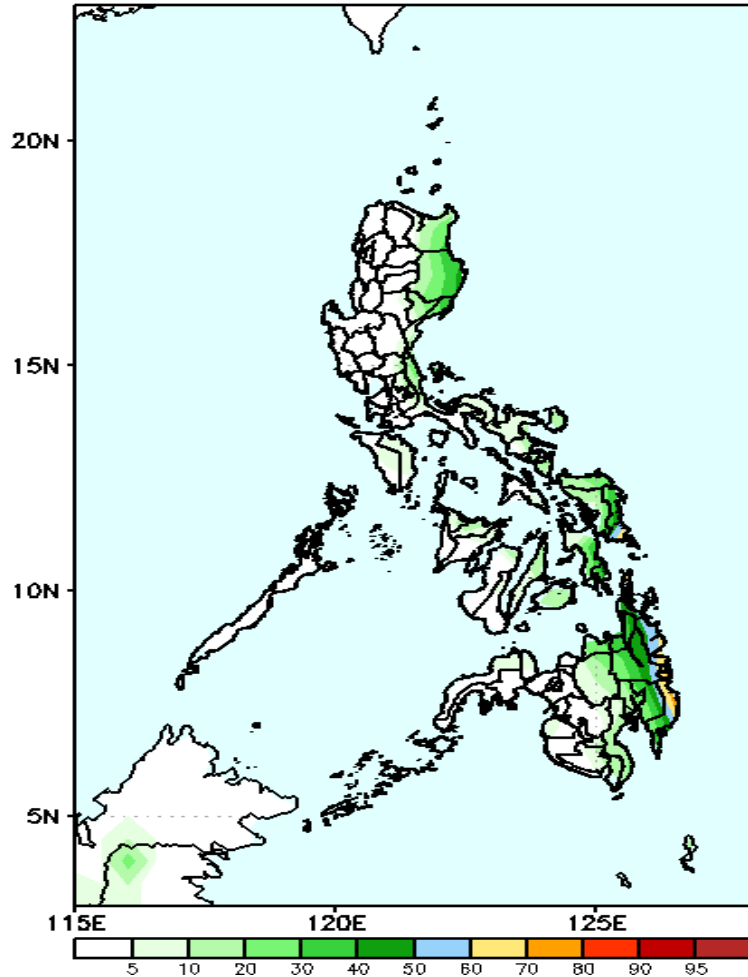
Exceedance Probability > 100/150/200 mm

Week 1: Jan 21-27, 2022

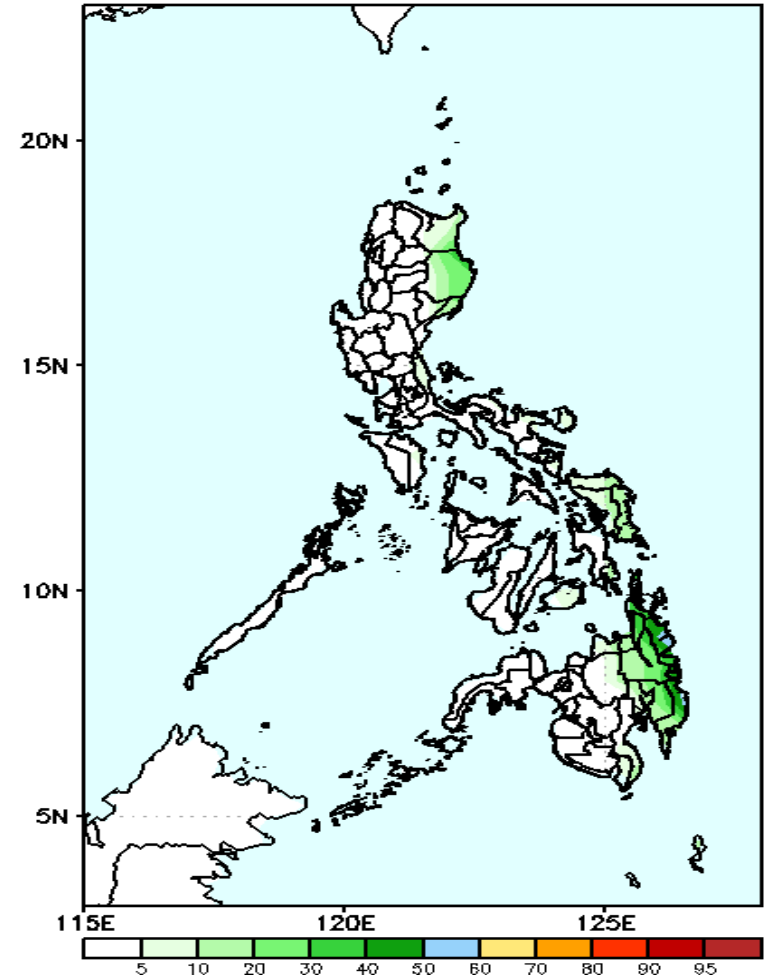
GEFS Week-1 Exceedance Prob. > 100mm GEFS Week-1 Exceedance Prob. > 150mm GEFS Week-1 Exceedance Prob. > 200mm
Valid: 20220121 – 20220127 Valid: 20220121 – 20220127 Valid: 20220121 – 20220127



60-85% probability of rainfall to exceed 100mm in Eastern Visayas and in CARAGA & Davao Region while less likely for the rest of the country during the forecast period.



Low probability of rainfall to exceed 150mm in most parts of the country is expected during the forecast period.

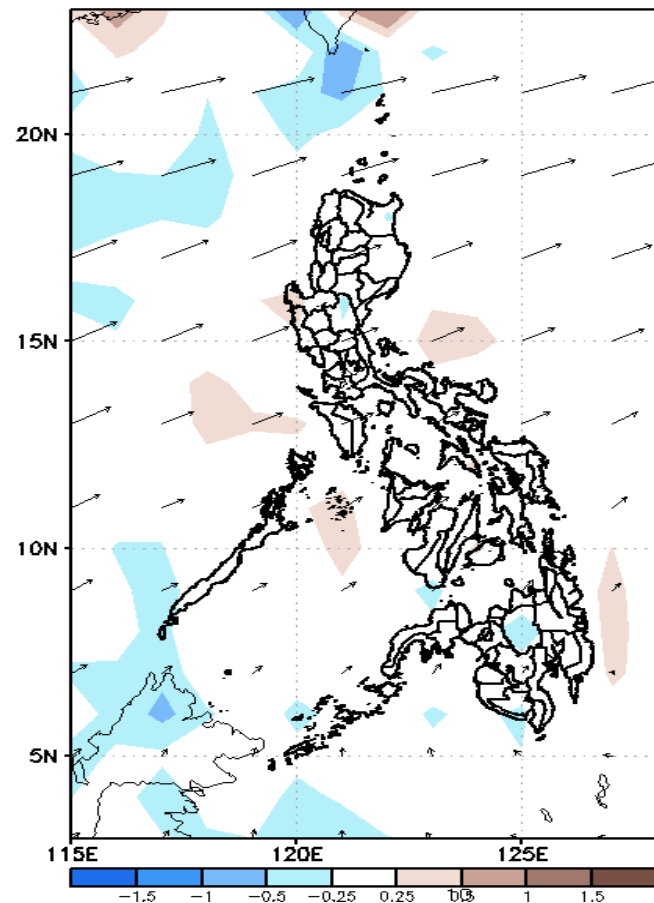


Low probability of rainfall to exceed 200mm in most parts of the country is expected during the forecast period.

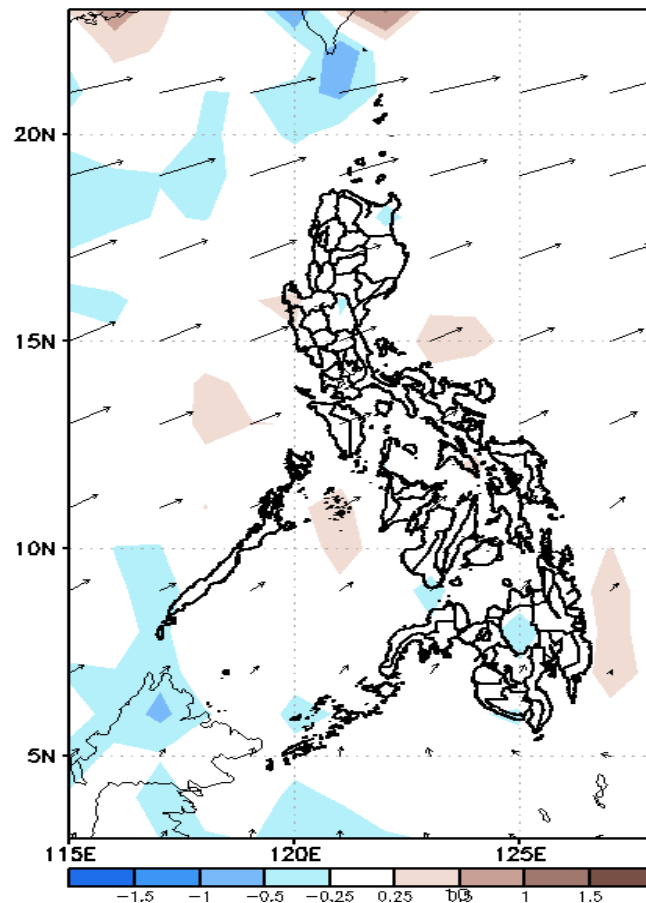
GEFS Week-2 Forecasts: Divergence & Wind Anomaly

Week 2: Jan 26- Feb 01, 2022

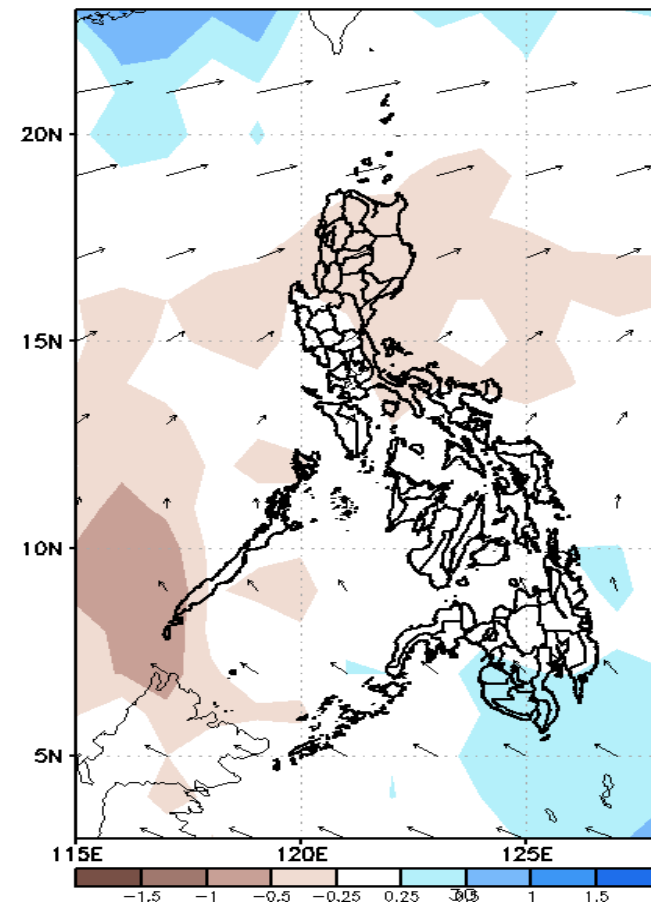
GEFS Week-2 850-hPa Divergence and Wind Anom
Valid: 20220128 - 20220203



GEFS Week-2 700-hPa Divergence and Wind Anom
Valid: 20220128 - 20220203



GEFS week-2 200-hPa Divergence and Wind Anom
Valid: 20220128 - 20220203

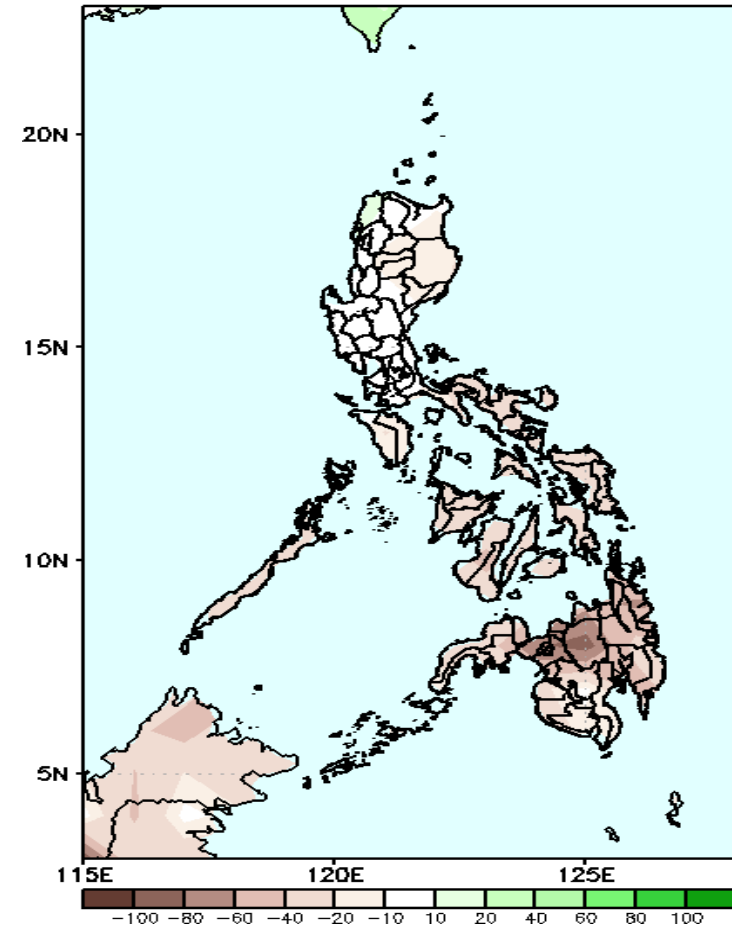


Upper and low level Divergence suggest likelihood of light precipitation in Southern Mindanao. Easterlies affecting the rest of the country during the forecast period.

Precipitation Anomaly and Exceedance Probability > 25/50 mm

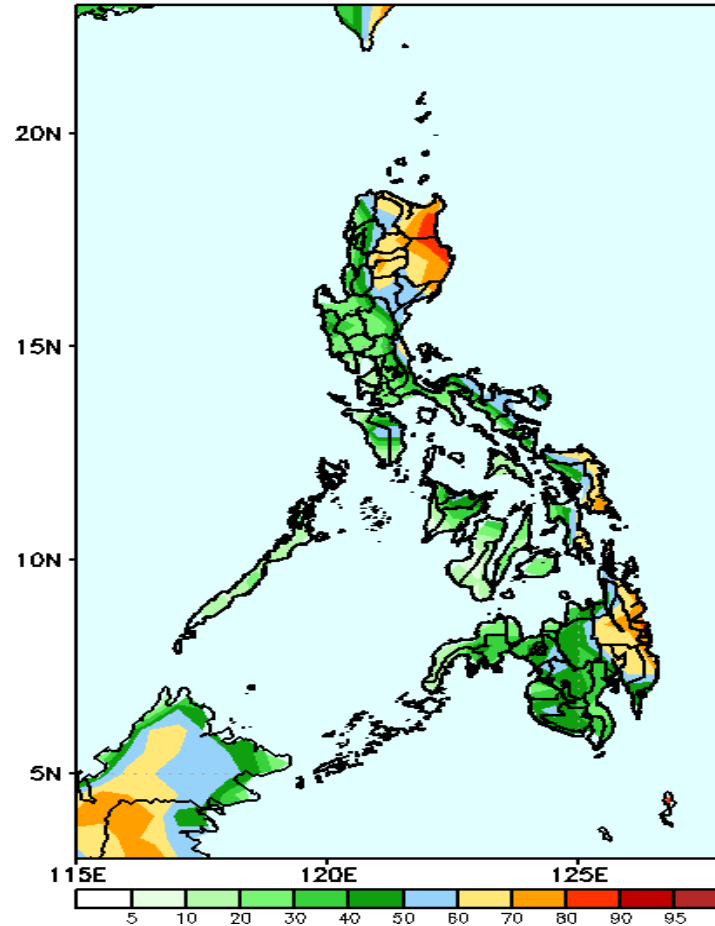
Week 2: Jan 26- Feb 01, 2022

GEFS Week-2 Precip Anomaly
Valid: 20220128 - 20220203



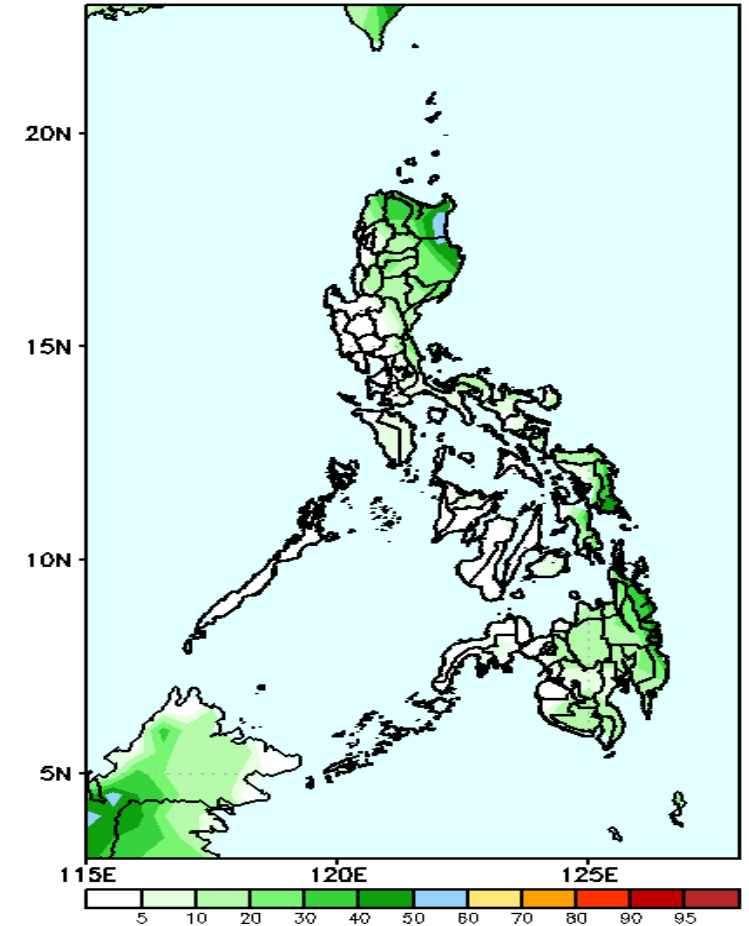
Rainfall deficit 40-80mm is expected in most parts of Visayas & Mindanao during the forecast period

GEFS Week-2 Exceedance Prob. > 25mm
Valid: 20220128 - 20220203



60-95% probability of rainfall to exceed 25mm in Cordillera Region, Isabela, Cagayan, Samar provinces and eastern Mindanao while less likely for the rest of the country during the forecast period.

GEFS Week-2 Exceedance Prob. > 50mm
Valid: 20220128 - 20220203

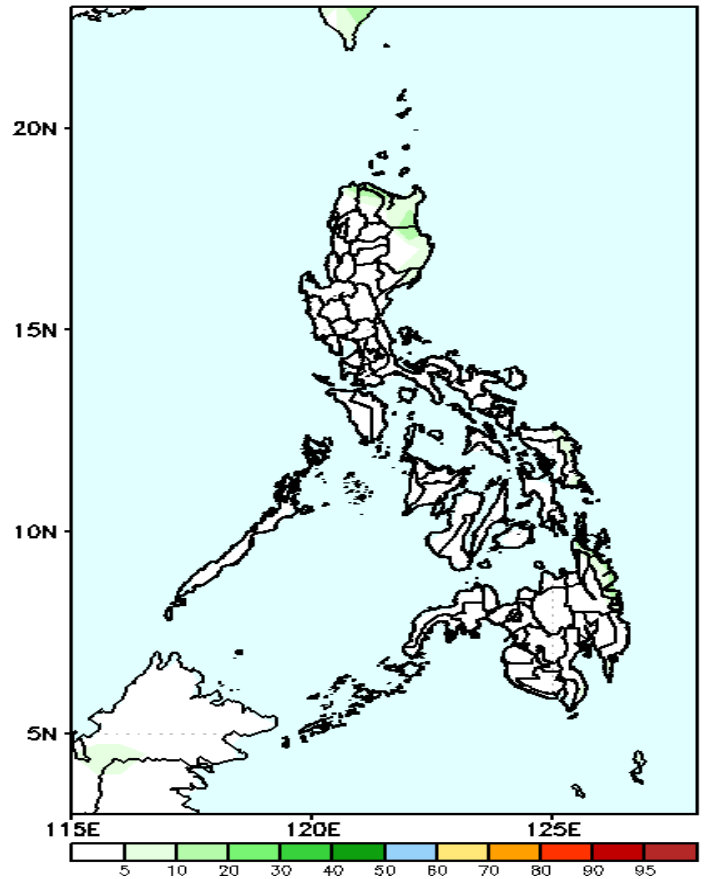


Low probability of rainfall to exceed 50mm in most parts of the country is expected during the forecast period.

Exceedance Probability > 100/150/200 mm

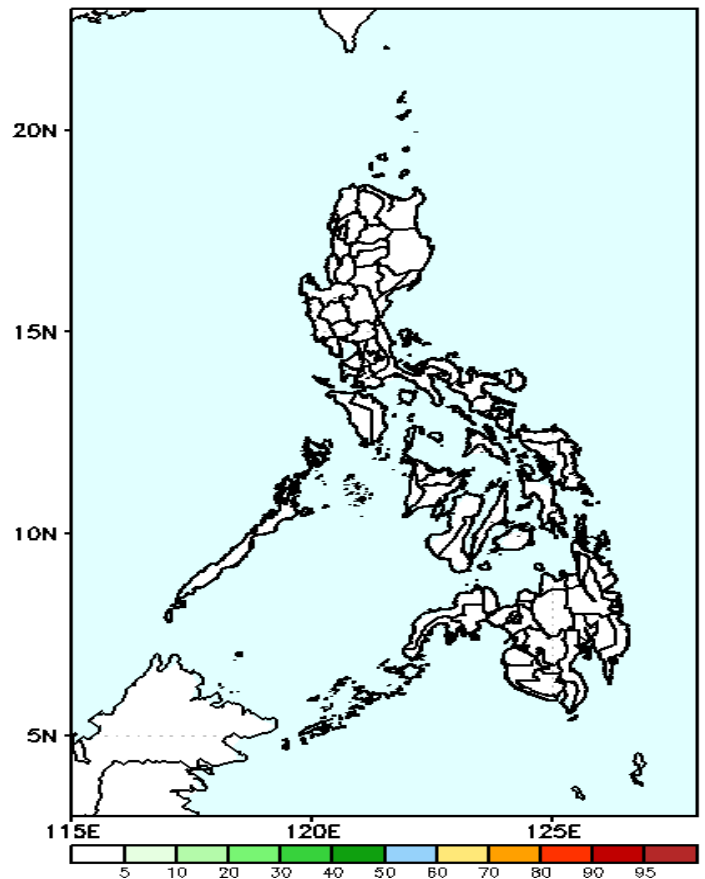
Week 2: Jan 26- Feb 01, 2022

GEFS Week-2 Exceedance Prob. > 100mm
Valid: 20220128 - 20220203



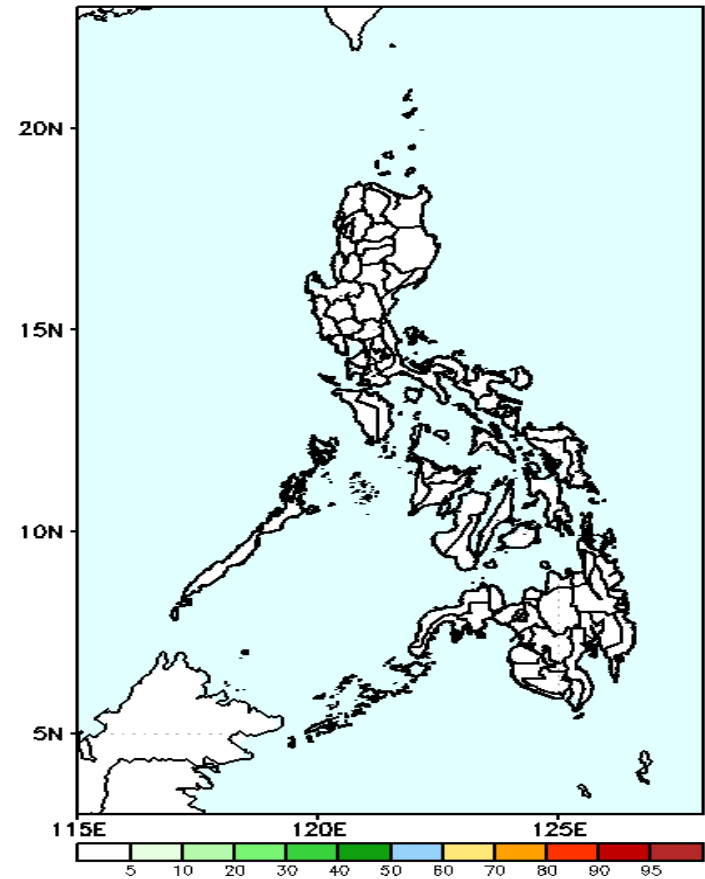
Low probability of rainfall to exceed 100mm in most parts of the country is expected during the forecast period.

GEFS Week-2 Exceedance Prob. > 150mm
Valid: 20220128 - 20220203



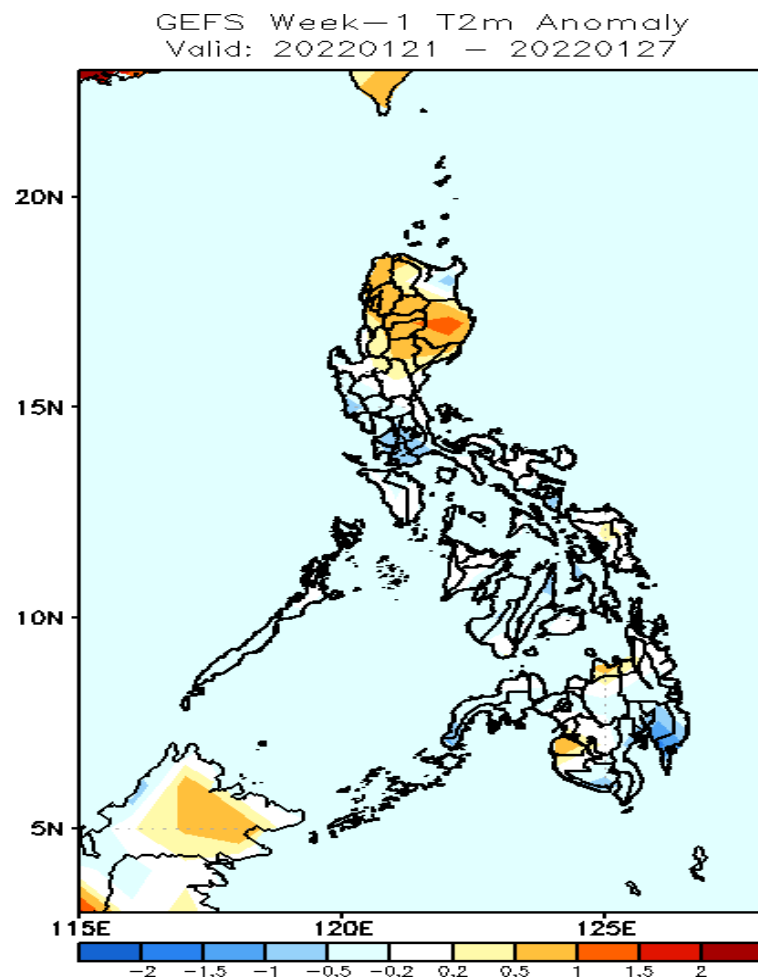
Low probability of rainfall to exceed 150mm in most parts of the country is expected during the forecast period.

GEFS Week-2 Exceedance Prob. > 200mm
Valid: 20220128 - 20220203



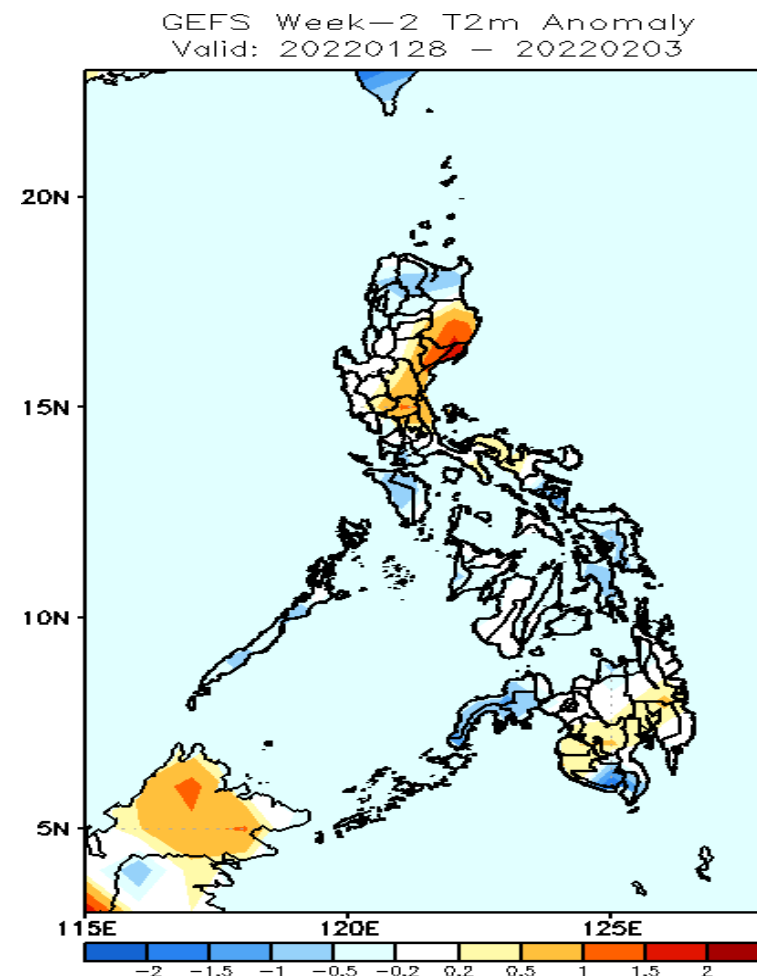
Low probability of rainfall to exceed 200mm in most parts of the country is expected during the forecast period.

GEFS Week-1 & 2 Forecasts: T2m Anomaly



2m Temperature Week 1: Jan 21-27, 2022

Average to slightly cooler than average surface air temperature will likely experience in most parts of the country except in Ilocos Norte, Isabela and Cordillera Region where slightly warmer to warmer than average temperature is expected during the forecast period.



2m Temperature Week 2: Jan 28- Feb 03, 2022

Average to slightly cooler than average surface air temperature will likely experience in most parts of the country except in parts of eastern Luzon where slightly warmer to warmer than average temperature is expected during the forecast period.