



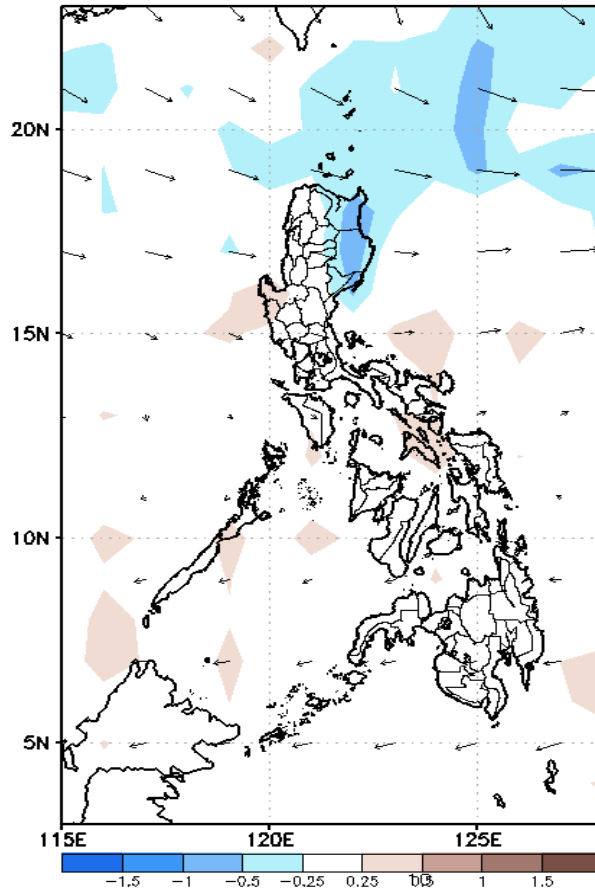
Week 1 & Week 2 Forecast for the Philippines using GEFS Model



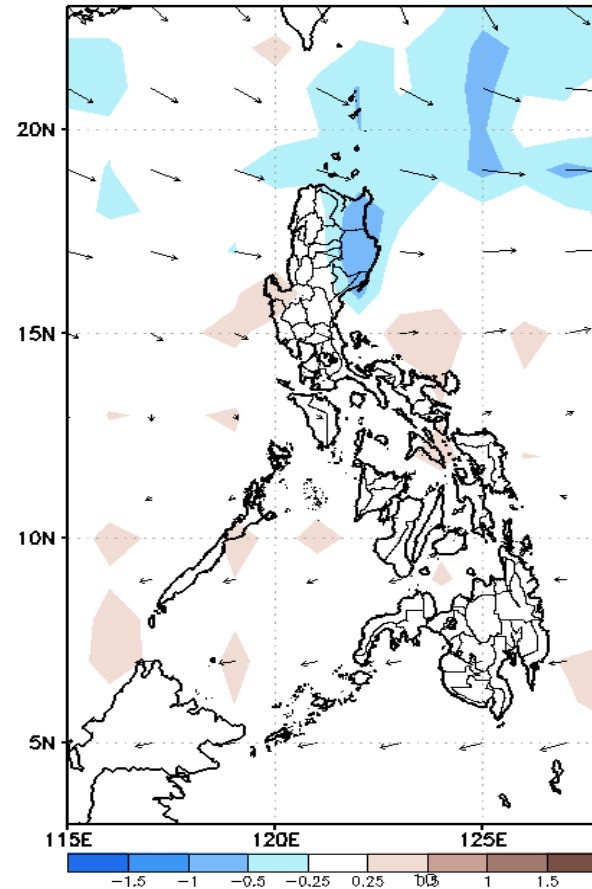
GEFS Week-1 Forecasts: Divergence & Wind Anomaly

Week 1: June 21-27, 2021

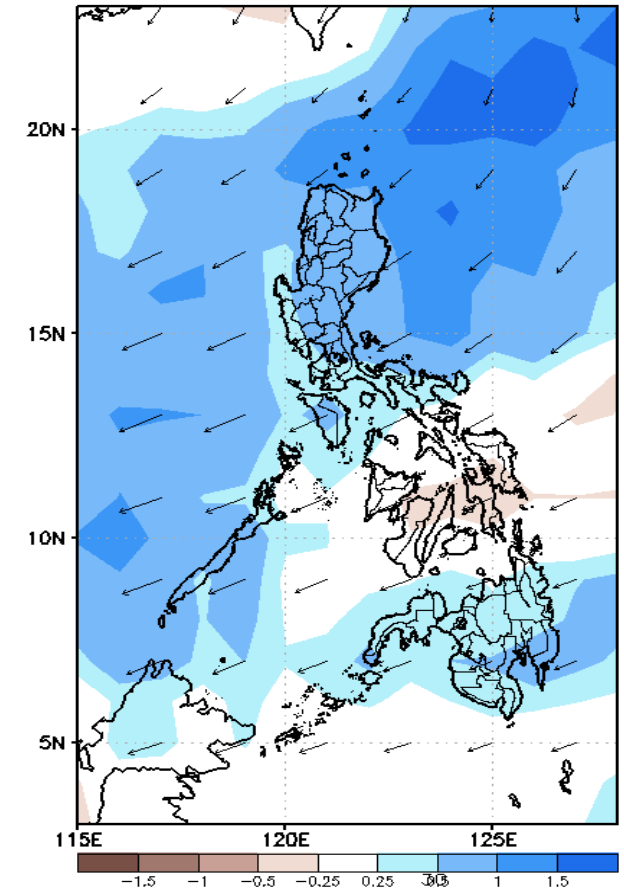
GEFS Week-1 850-hPa Divergence and Wind Anomoc
Valid: 20210621 - 20210627



GEFS Week-1 700-hPa Divergence and Wind Anomoc
Valid: 20210621 - 20210627



GEFS Week-1 200-hPa Divergence and Wind Anomoc
Valid: 20210621 - 20210627

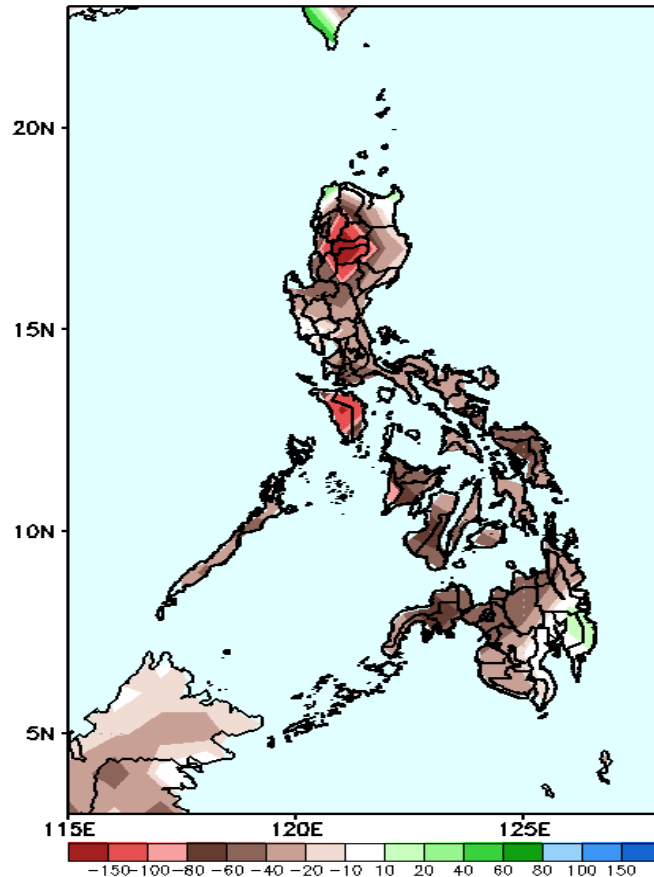


Upper and low level Divergence suggest likelihood of precipitation in most parts of Luzon and Mindanao. Southwest monsoon affecting Luzon while Easterlies affecting the rest of the country. Attributing to warmer temperature and higher heat index; with humid environment (especially in the western section of the country) during the forecast period.

Precipitation Anomaly and Exceedance Probability > 25/50 mm

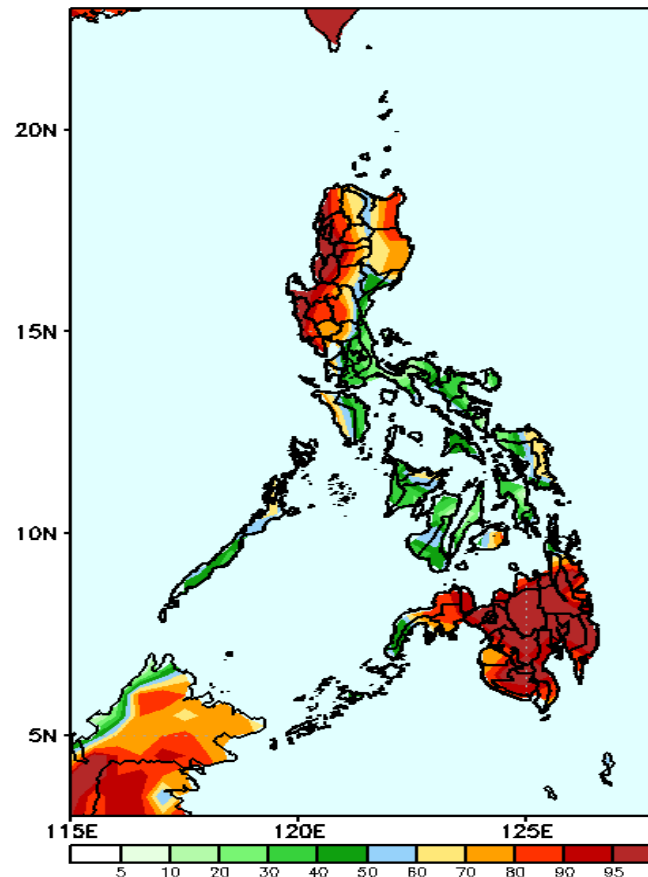
Week 1: June 21-27, 2021

GEFS Week-1 Precip Anomaly
Valid: 20210621 - 20210627



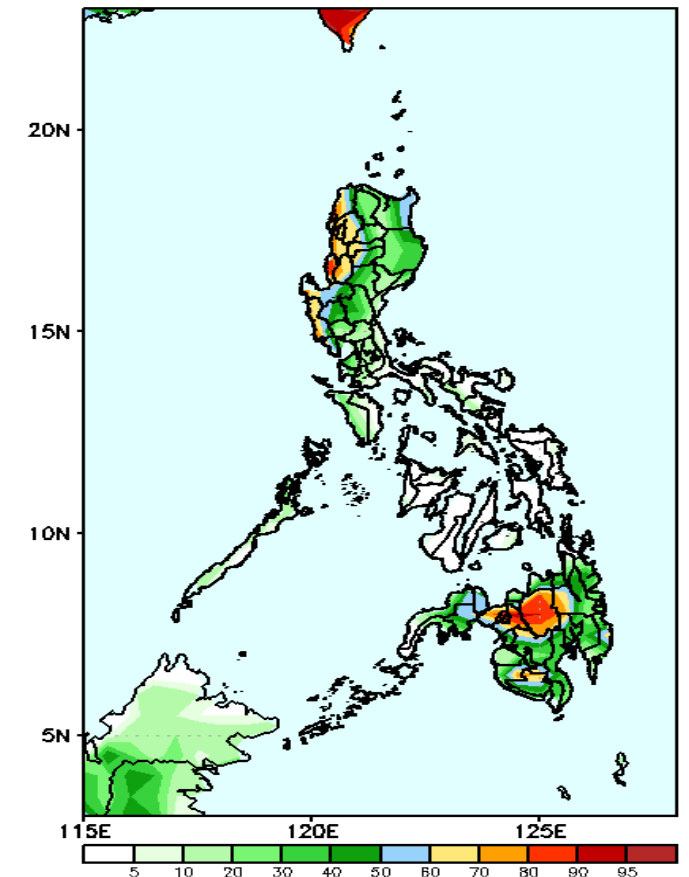
Rainfall deficit of up to 150mm is expected in Cordillera Region and Mindoro and 40-80mm for the rest of the country during the forecast period.

GEFS Week-1 Exceedance Prob. > 25mm
Valid: 20210621 - 20210627



High probability of rainfall to exceed 25mm in most parts of Northern and Central Luzon, parts of Cavite and Batangas, some parts of Visayas and most parts of Mindanao while less likely for the rest of the country during the forecast period.

GEFS Week-1 Exceedance Prob. > 50mm
Valid: 20210621 - 20210627



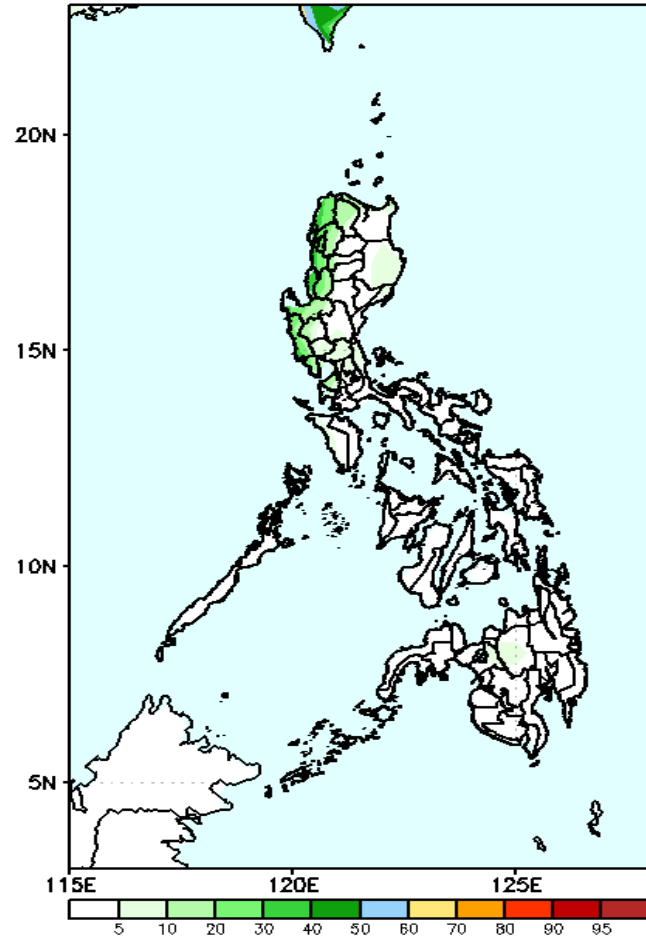
High probability of rainfall to exceed 50mm in some parts of Western Luzon, Lanao provinces and Bukidnon while less likely for the rest of the country during the forecast period.



Exceedance Probability > 100/150/200 mm

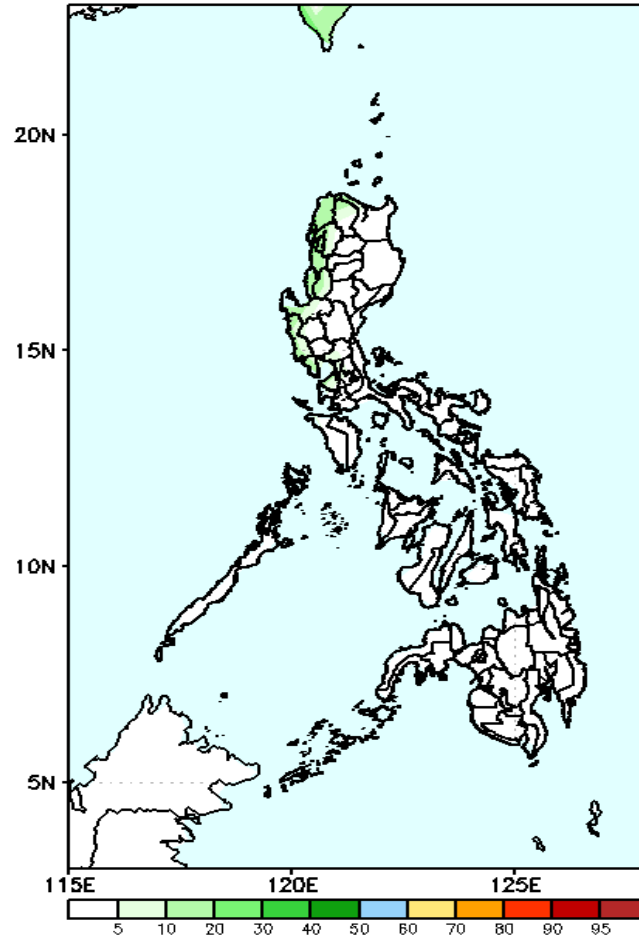
Week 1: June 21-27, 2021

GEFS Week-1 Exceedance Prob. > 100mm
Valid: 20210621 - 20210627



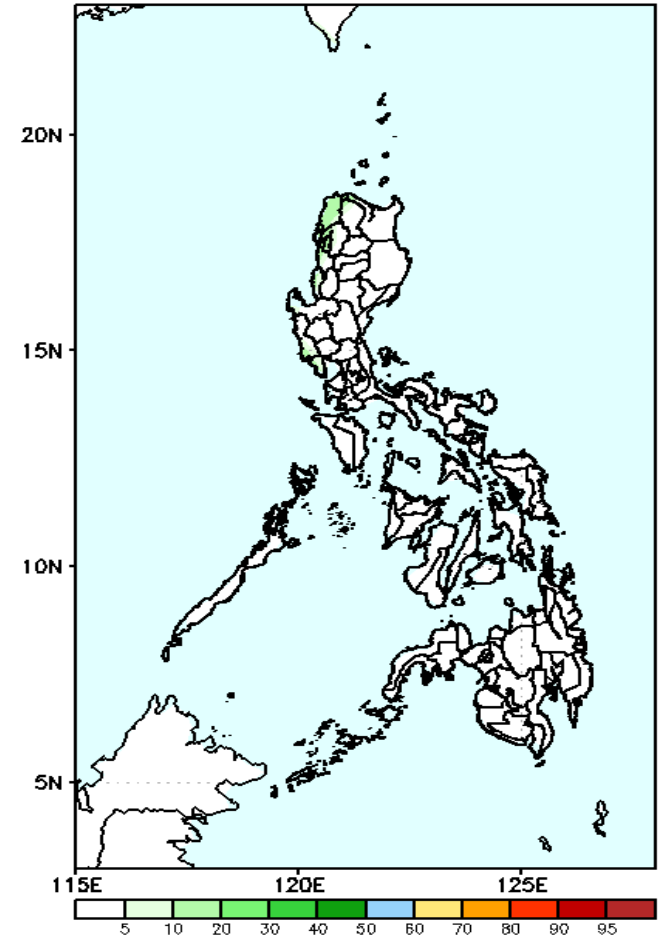
Less probability of rainfall to exceed 100mm in most parts of the country during the forecast period.

GEFS Week-1 Exceedance Prob. > 150mm
Valid: 20210621 - 20210627



Less probability of rainfall to exceed 150mm in most parts of the country during the forecast period.

GEFS Week-1 Exceedance Prob. > 200mm
Valid: 20210621 - 20210627



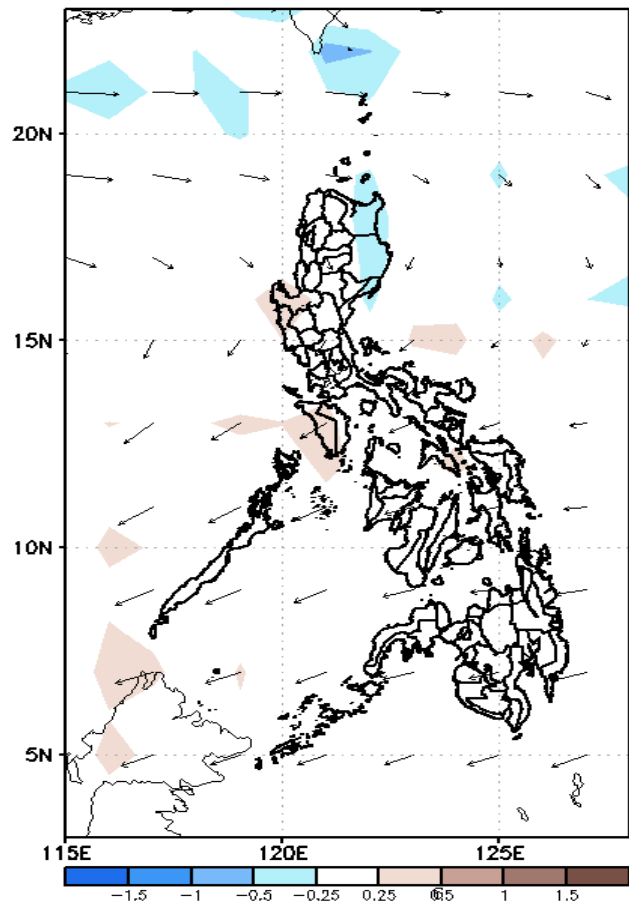
Less probability of rainfall to exceed 200mm in most parts of the country during the forecast period.



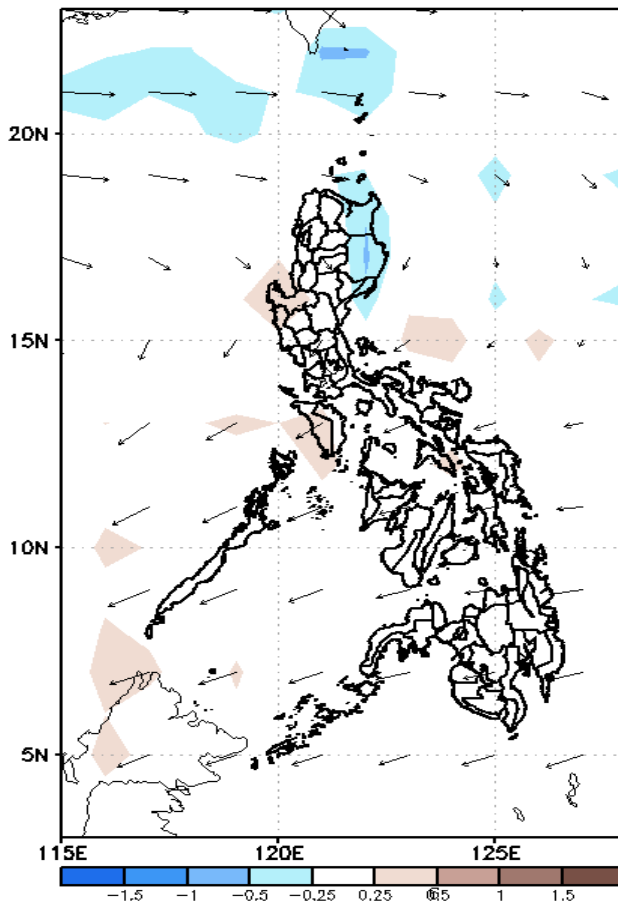
GEFS Week-2 Forecasts: Divergence & Wind Anomaly

Week 2: June 28-July 04, 2021

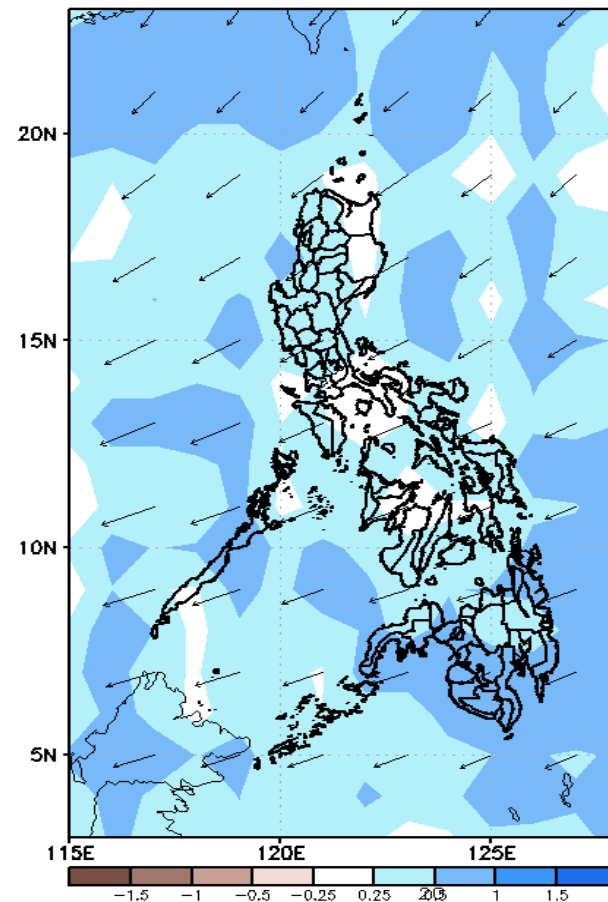
GEFS Week-2 850-hPa Divergence and Wind Anom
Valid: 20210628 - 20210704



GEFS Week-2 700-hPa Divergence and Wind Anom
Valid: 20210628 - 20210704



GEFS week-2 200-hPa Divergence and Wind Anom
Valid: 20210628 - 20210704

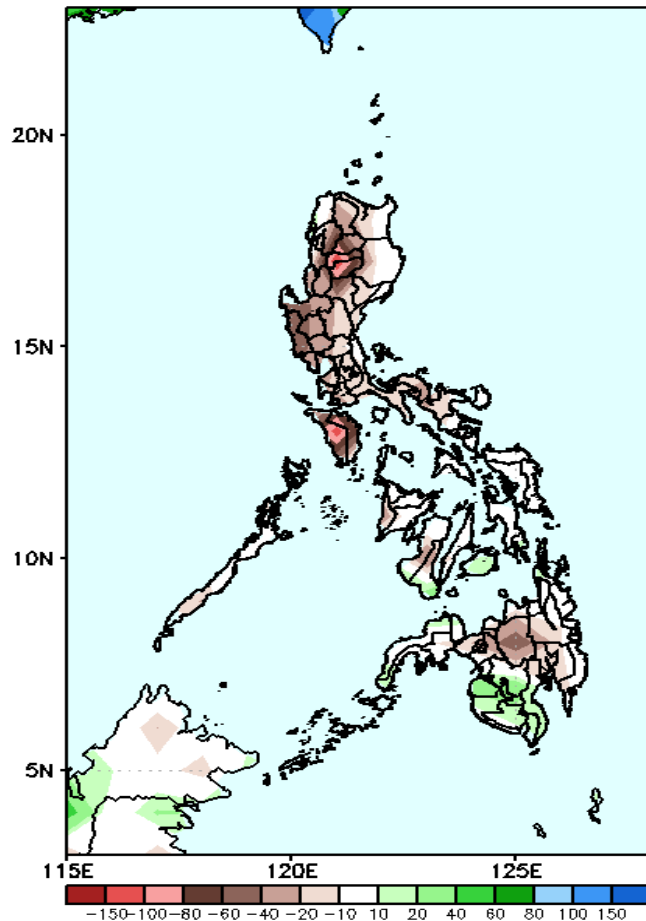


Upper and low level Divergence suggest likelihood of precipitation in most parts of the country. Southwest monsoon affecting the western sections of Luzon while Easterlies affecting the rest. Attributing to warmer temperature and higher heat index; with humid environment (especially in the western section of the country) during the forecast period.

Precipitation Anomaly and Exceedance Probability > 25/50 mm

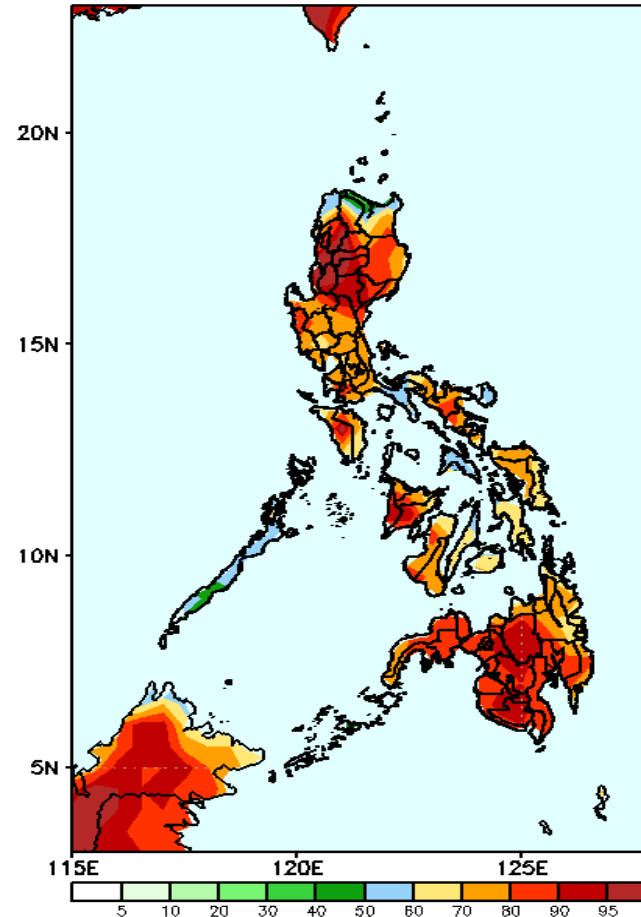
Week 2: June 28-July 04, 2021

GEFS Week-2 Precip Anomaly
Valid: 20210628 - 20210704



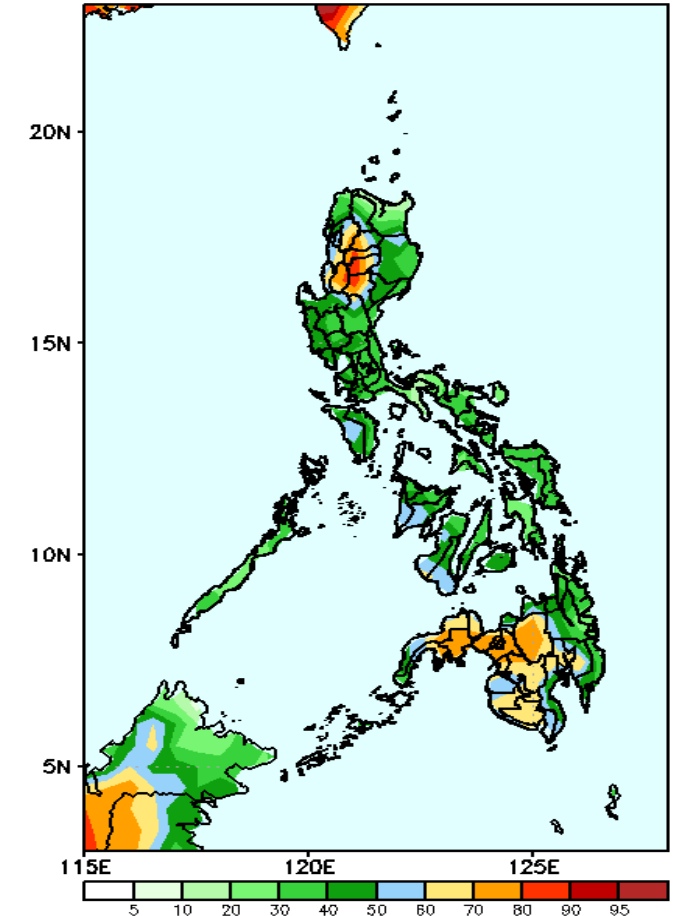
Rainfall deficit of 40-100mm is expected in most parts of the country (specially in Cordillera Region & Mindoro) during the forecast period.

GEFS Week-2 Exceedance Prob. > 25mm
Valid: 20210628 - 20210704



High probability of rainfall to exceed 25mm in most parts of the country during the forecast period.

GEFS Week-2 Exceedance Prob. > 50mm
Valid: 20210628 - 20210704

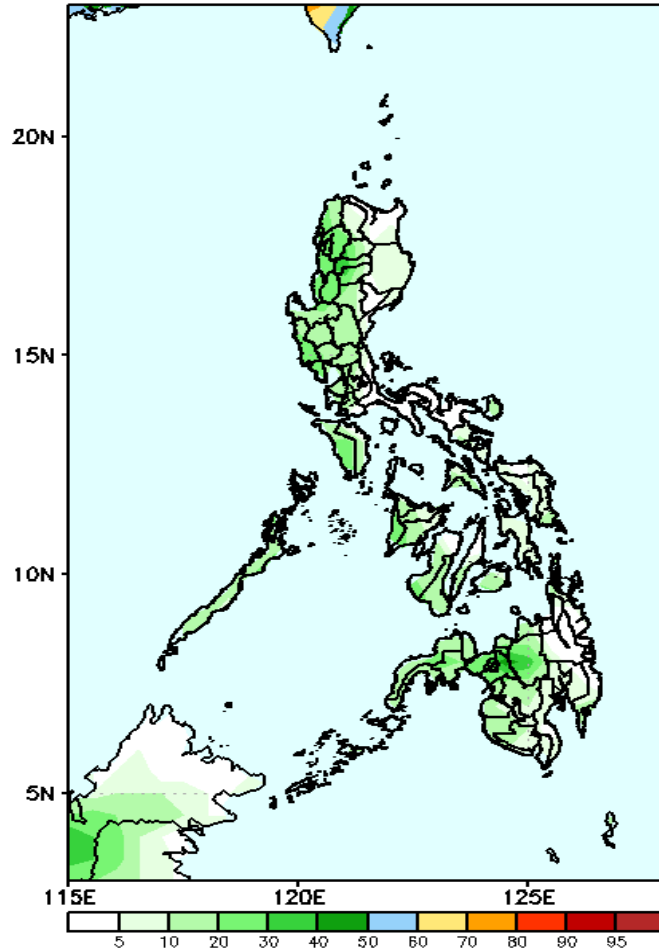


High probability of rainfall to exceed 50mm in most parts of CAR, La Union, northern part of Pangasinan and Western and Central Mindanao while less likely for rest of the country during the forecast period.

Exceedance Probability > 100/150/200 mm

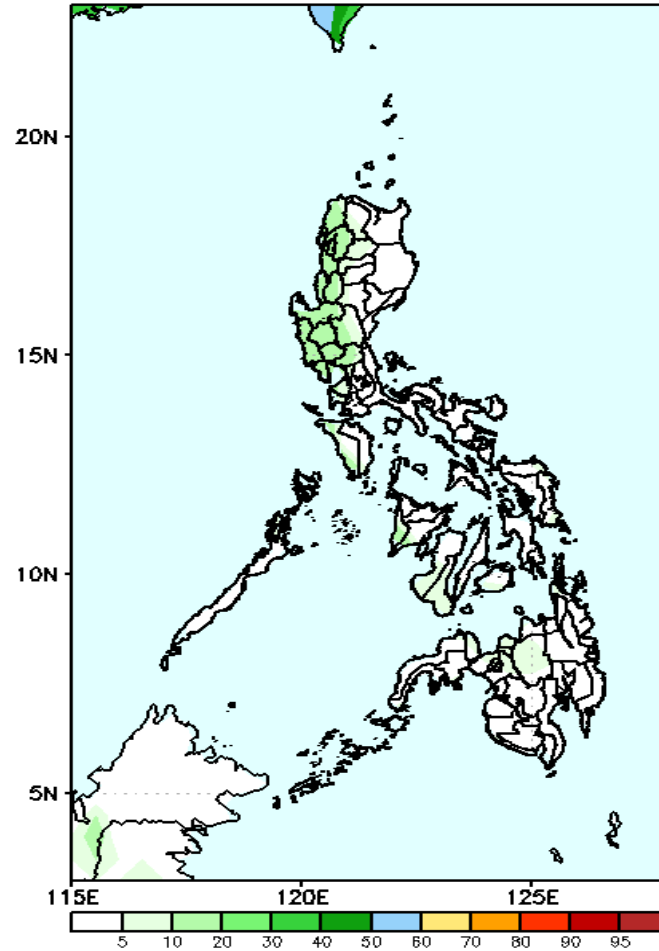
Week 2: June 28-July 04, 2021

GEFS Week-2 Exceedance Prob. > 100
Valid: 20210628 – 20210704



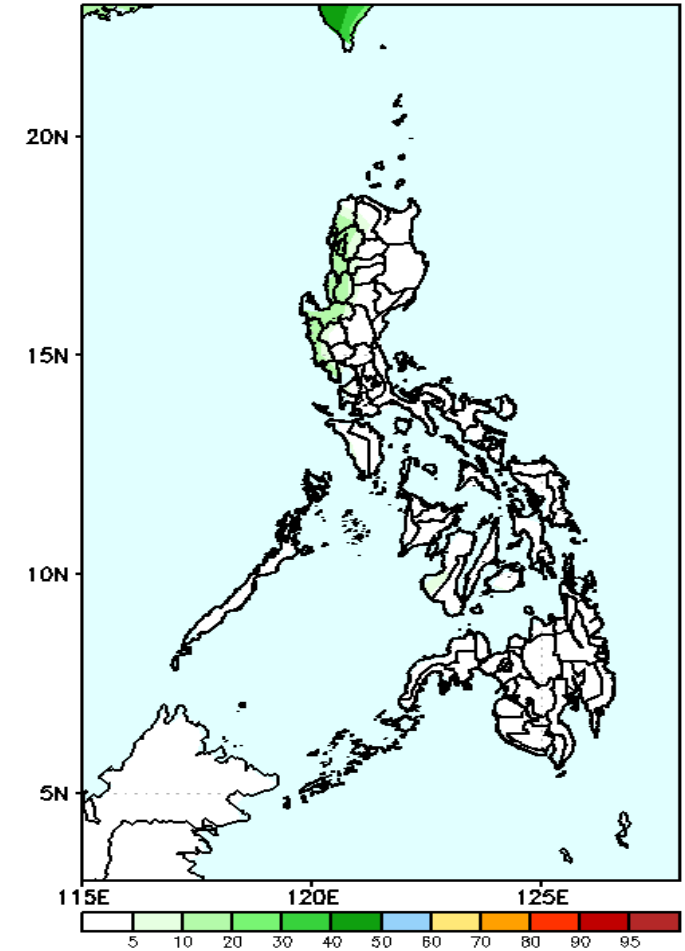
Less probability of rainfall to exceed 100mm in most parts of the country during the forecast period.

GEFS Week-2 Exceedance Prob. > 150mm
Valid: 20210628 – 20210704



Less probability of rainfall to exceed 150mm in most parts of the country during the forecast period.

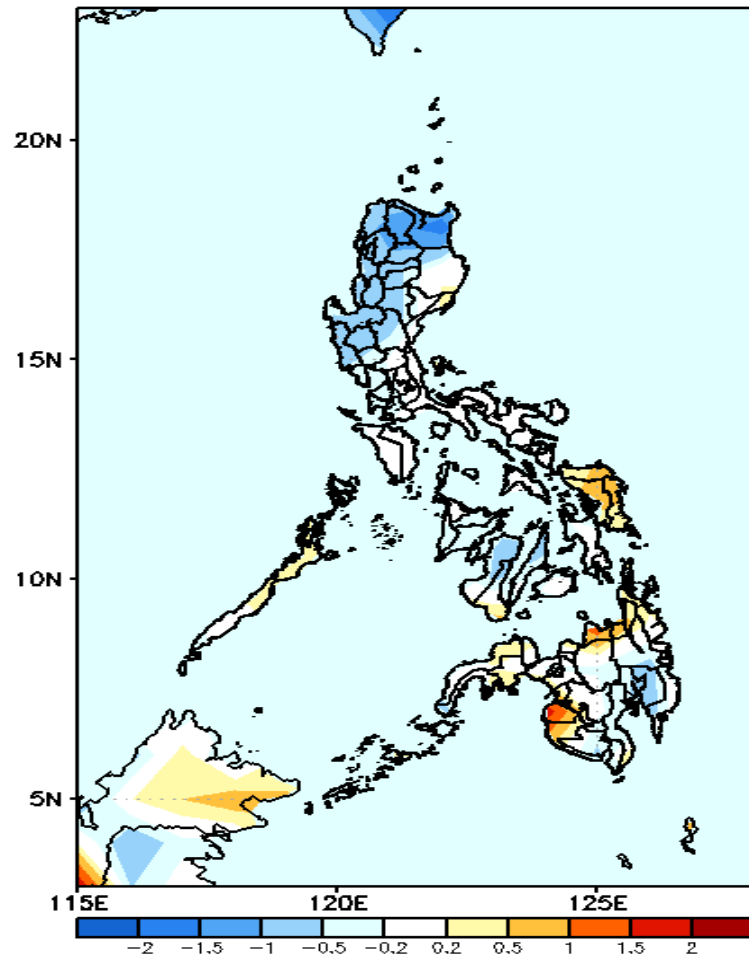
GEFS Week-2 Exceedance Prob. > 200mm
Valid: 20210628 – 20210704



Less probability of rainfall to exceed 200mm in most parts of the country during the forecast period.

GEFS Week-1 & 2 Forecasts: T2m Anomaly

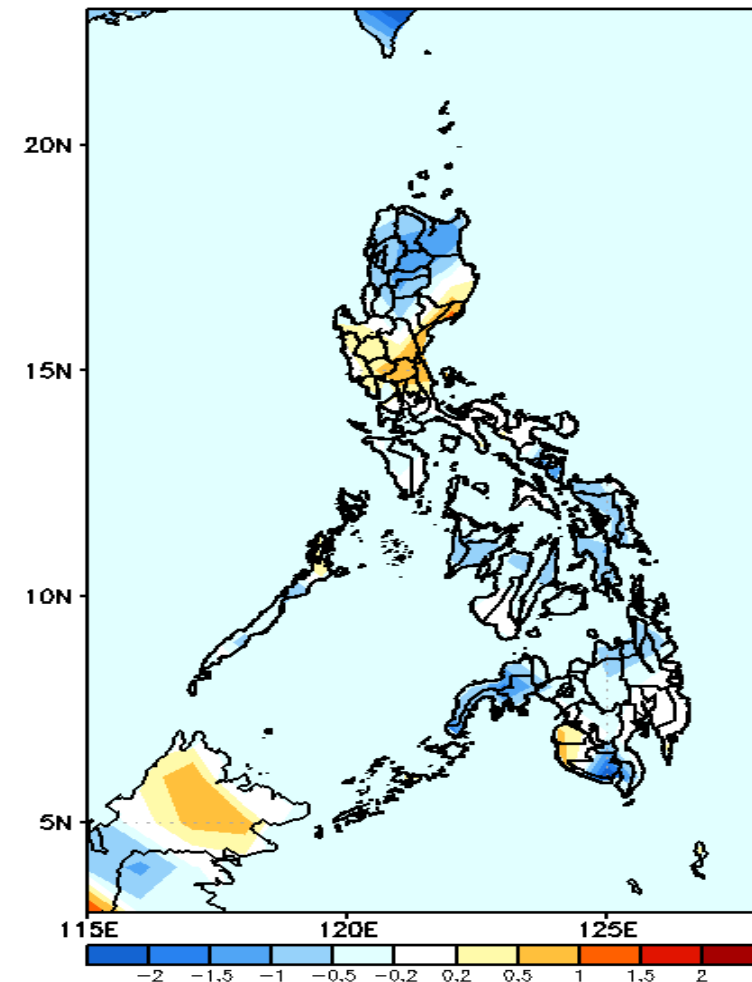
GEFS Week-1 T2m Anomaly
Valid: 20210621 – 20210627



2m Temperature Week 1: June 21-27, 2021

Slightly cooler to cooler than average surface air temperature will likely experience in most parts of western and Northern Luzon while average to slightly warmer for the rest of the country during the forecast period.

GEFS Week-2 T2m Anomaly
Valid: 20210628 – 20210704



2m Temperature Week 2: June 28-July 04, 2021

Slightly cooler to cooler than average surface air temperature will likely experience in most parts of the country except in eastern parts of Cagayan Valley & Central Luzon, Maguindanao and Sultan Kudarat during the forecast period.