



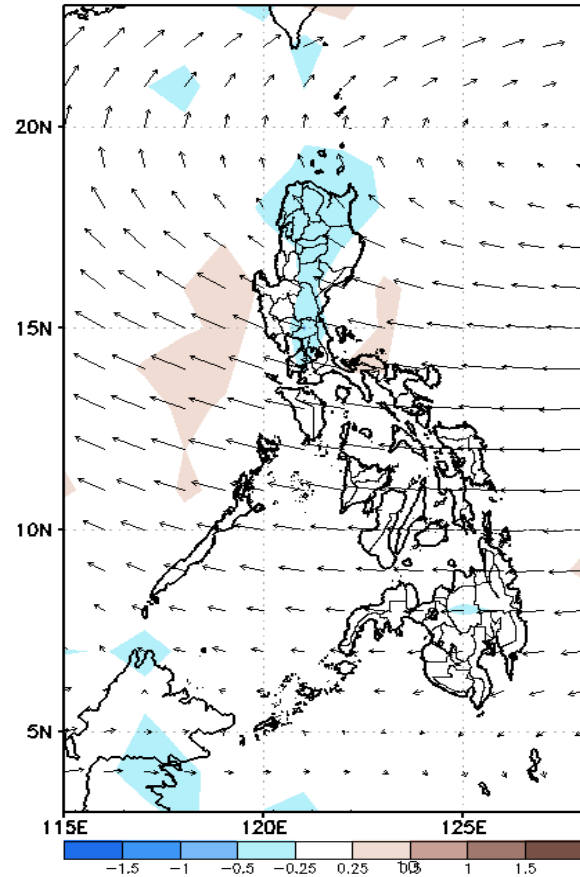
Week 1 & Week 2 Forecast for the Philippines using GEFS Model



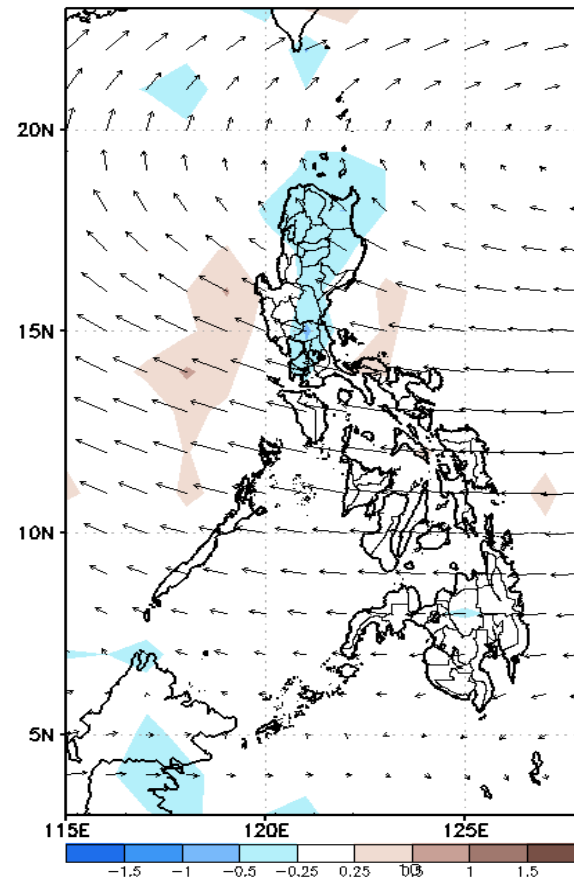
GEFS Week-1 Forecasts: Wind Anomaly Forecast

Week 1: Nov 21-27, 2022

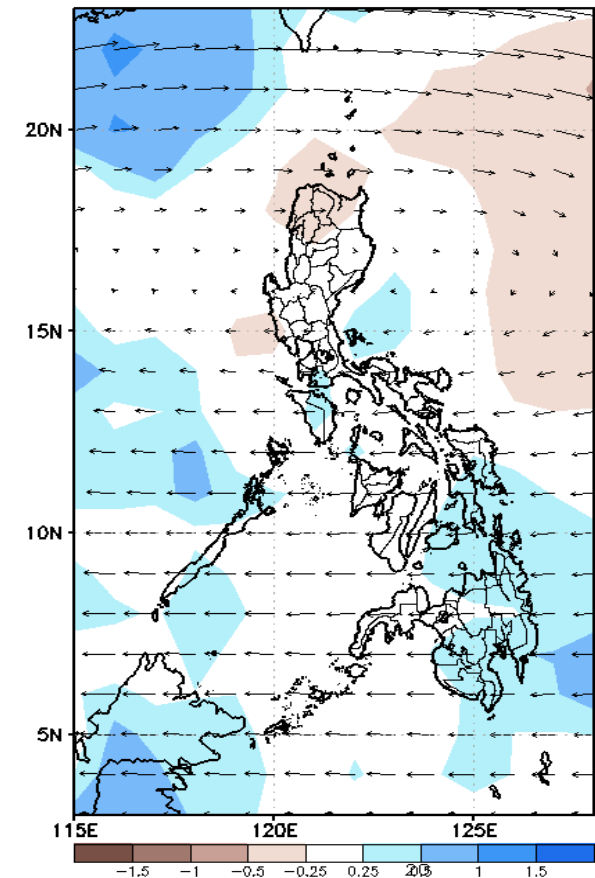
GEFS Week-1 850-hPa Divergence and Wind Anom
Valid: 20221121 - 20221127



GEFS Week-1 700-hPa Divergence and Wind Anom
Valid: 20221121 - 20221127



GEFS Week-1 200-hPa Divergence and Wind Anom
Valid: 20221121 - 20221127

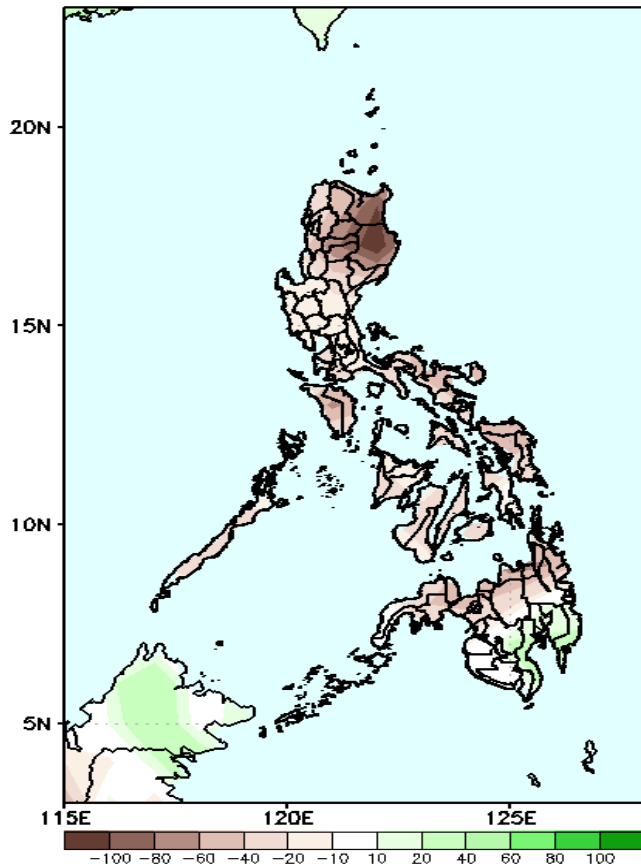


Easterlies will likely affect most parts of the country during the forecast period.

Precipitation Anomaly and Exceedance Probability > 25/50 mm

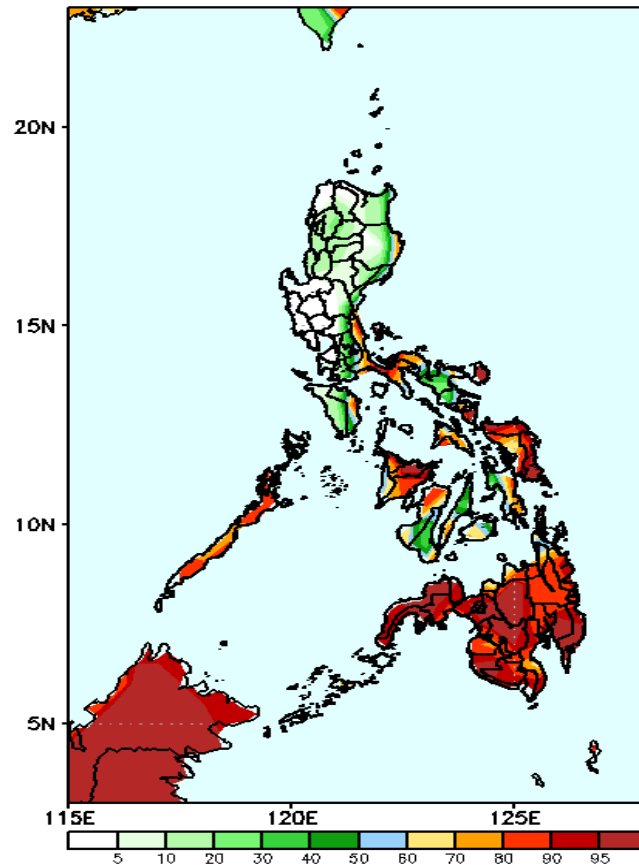
Week 1: Nov 21-27, 2022

GEFS Week-1 Precip Anomaly
Valid: 20221121 - 20221127



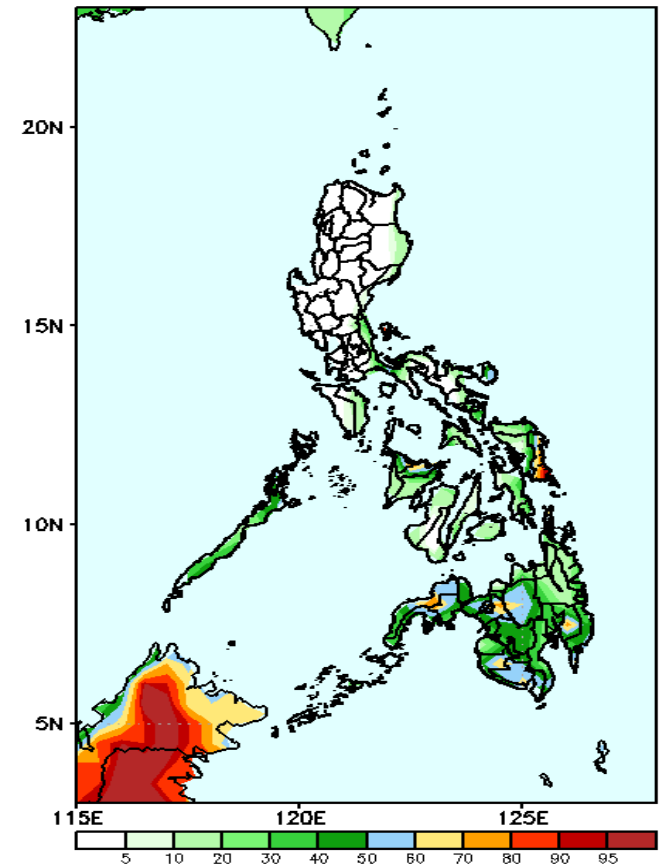
Rainfall deficit of 40-100mm is most likely in most parts of the country except in some areas in southern Mindanao where 10-40mm increase of rainfall is more likely during the forecast period.

GEFS Week-1 Exceedance Prob. > 25mm
Valid: 20221121 - 20221127



High probability of rainfall to exceed 25mm in Quezon, Camarines Norte, Sorsogon, Catanduanes, Palawan and most parts of Visayas and Mindanao while less likely for the rest of Luzon during the forecast period.

GEFS Week-1 Exceedance Prob. > 50mm
Valid: 20221121 - 20221127



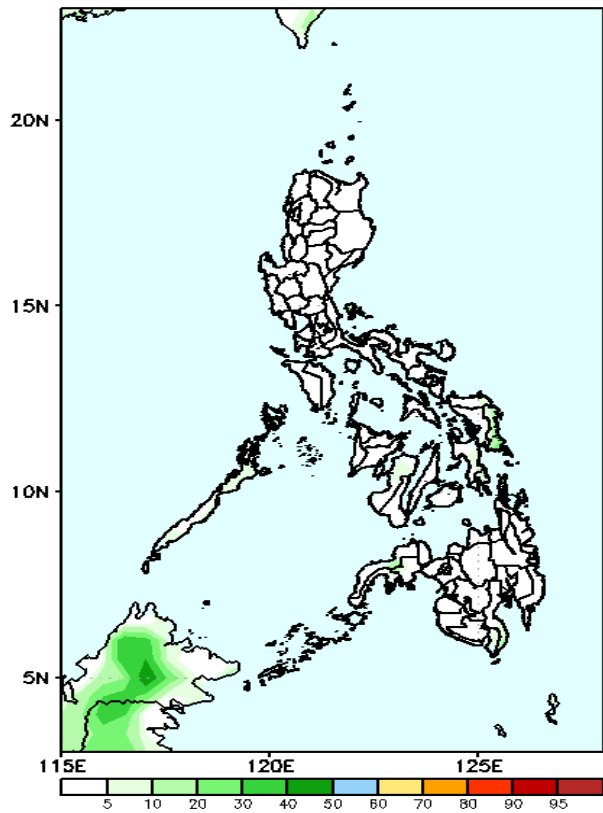
Low probability of rainfall to exceed 50mm in most parts of the country except Eastern Samar and some areas in Western Mindanao during the forecast period.



Exceedance Probability > 100/150/200 mm

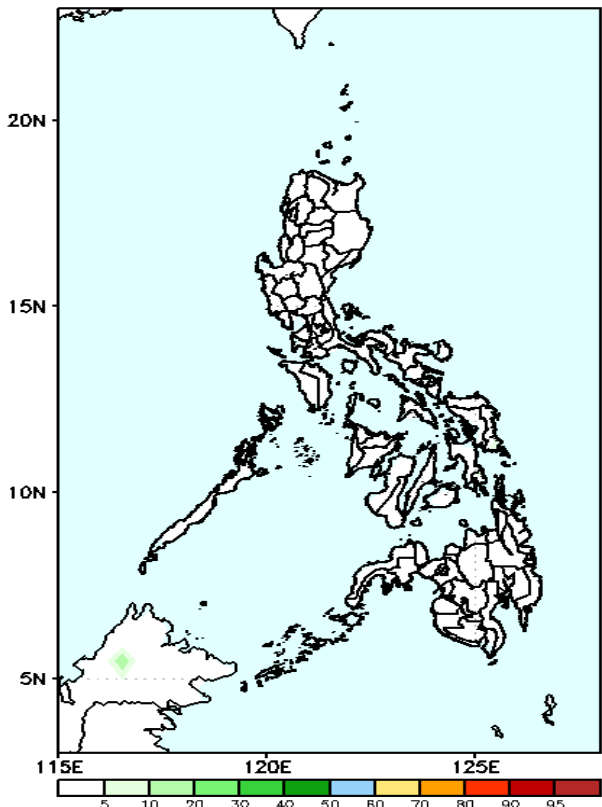
Week 1: Nov 21-27, 2022

GEFS Week-1 Exceedance Prob. > 100mm
Valid: 20221121 – 20221127



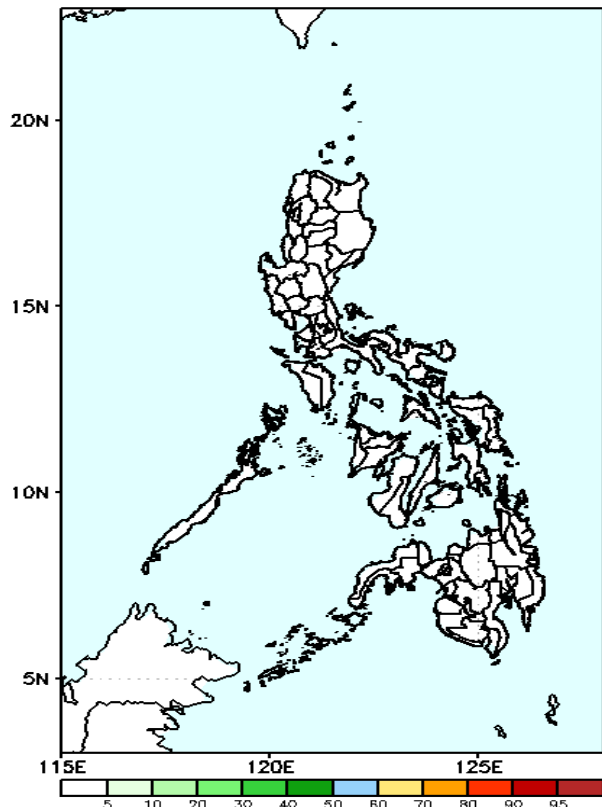
Low probability of rainfall to exceed 100mm in most parts of the country during the forecast period.

GEFS Week-1 Exceedance Prob. > 150mm
Valid: 20221121 – 20221127



Low probability of rainfall to exceed 150mm in most parts of the country during the forecast period.

GEFS Week-1 Exceedance Prob. > 200mm
Valid: 20221121 – 20221127

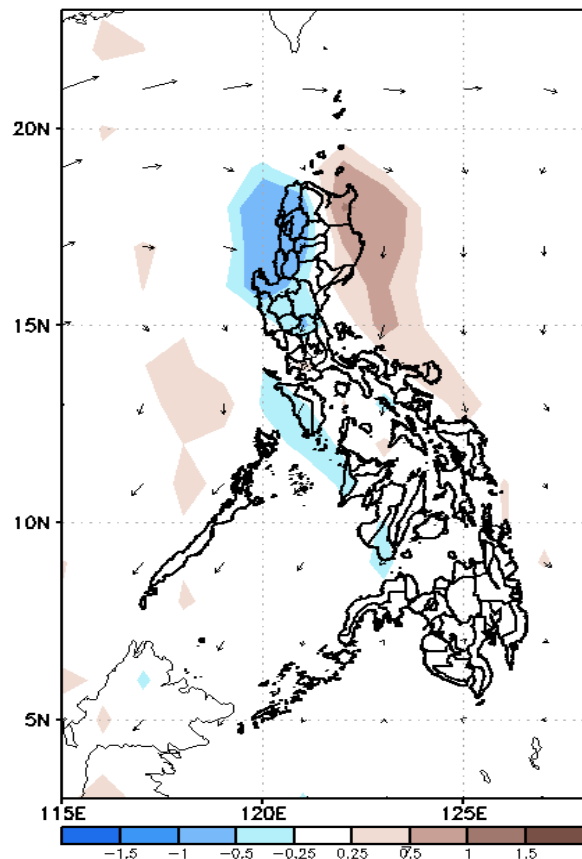


Low probability of rainfall to exceed 200mm in most parts of the country during the forecast period.

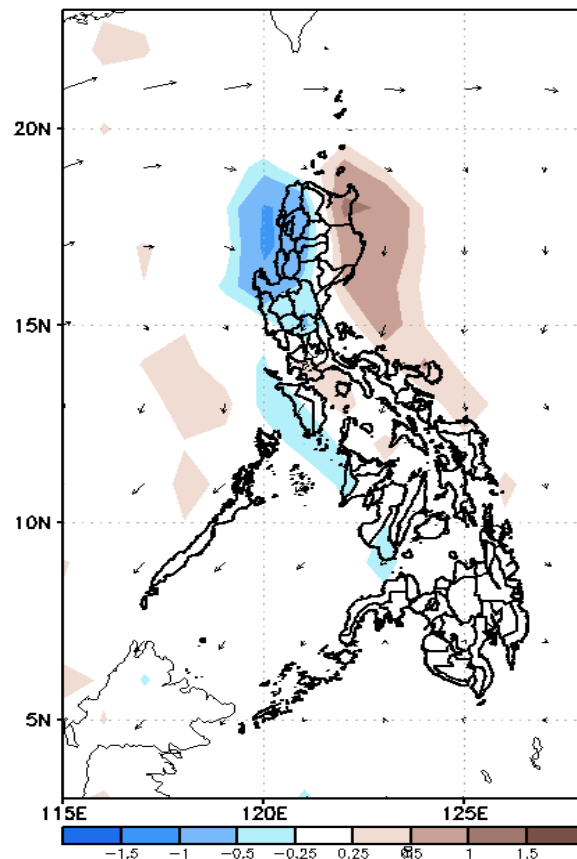
GEFS Week-2 Forecasts: Wind Anomaly Forecast

Week 2: Nov 28- Dec 04, 2022

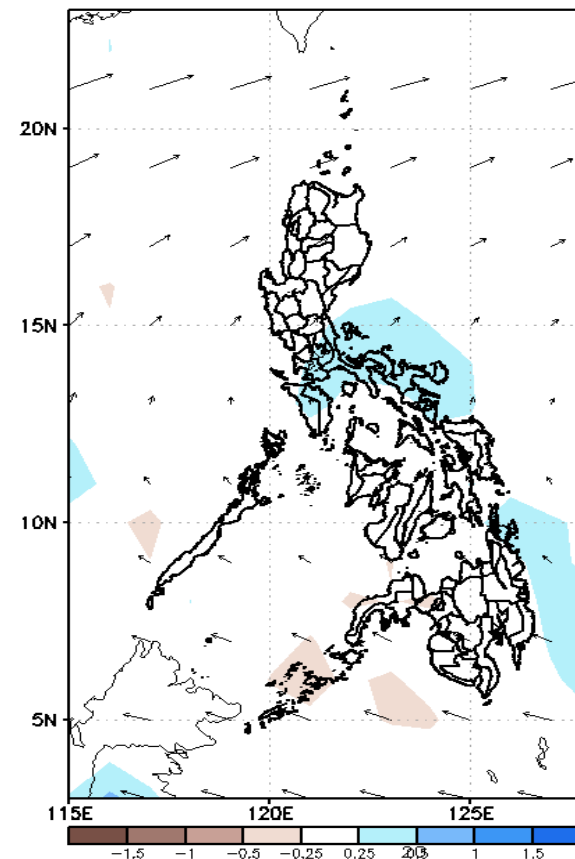
GEFS Week-2 850-hPa Divergence and Wind Anom
Valid: 20221128 - 20221204



GEFS Week-2 700-hPa Divergence and Wind Anom
Valid: 20221128 - 20221204



GEFS week-2 200-hPa Divergence and Wind Anomaly
Valid: 20221128 - 20221204

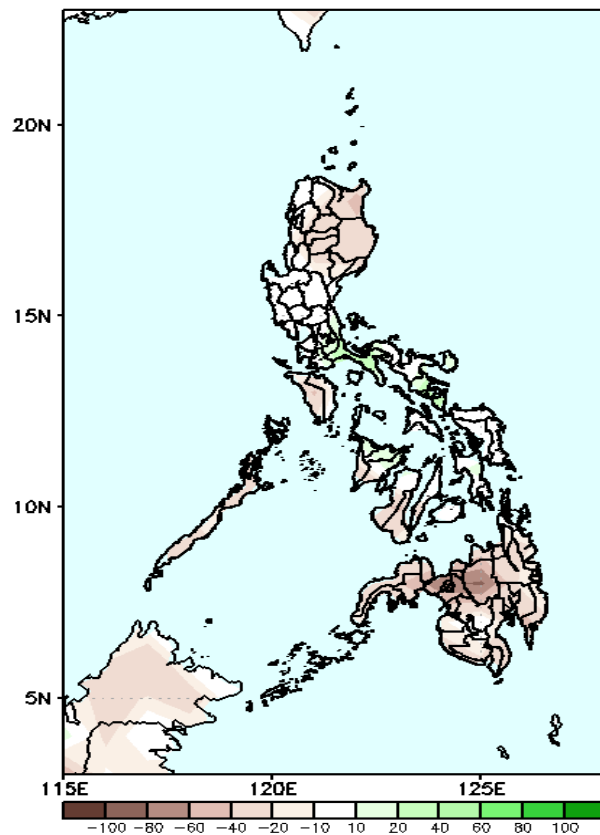


Easterlies will likely affect most parts of the country during the forecast period.

Precipitation Anomaly and Exceedance Probability > 25/50 mm

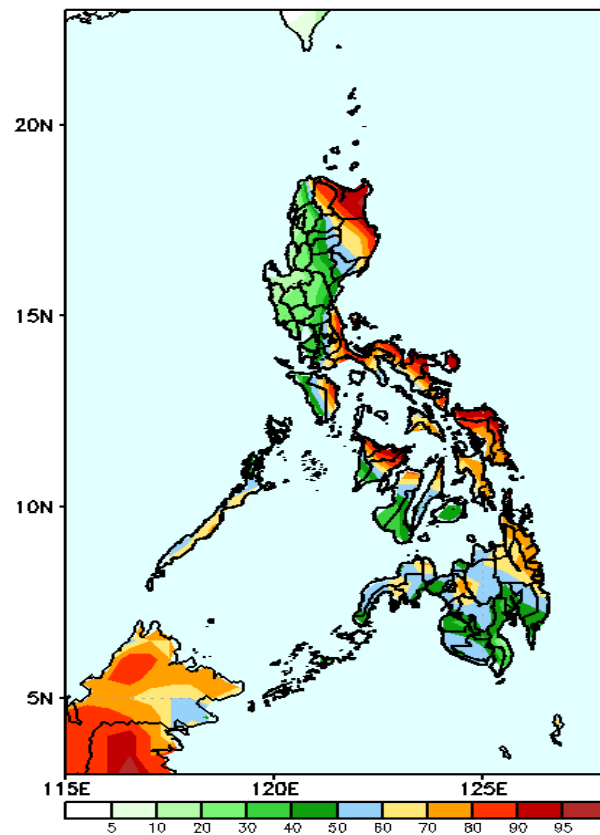
Week 2: Nov 28- Dec 04, 2022

GEFS Week-2 Precip Anomaly
Valid: 20221128 - 20221204



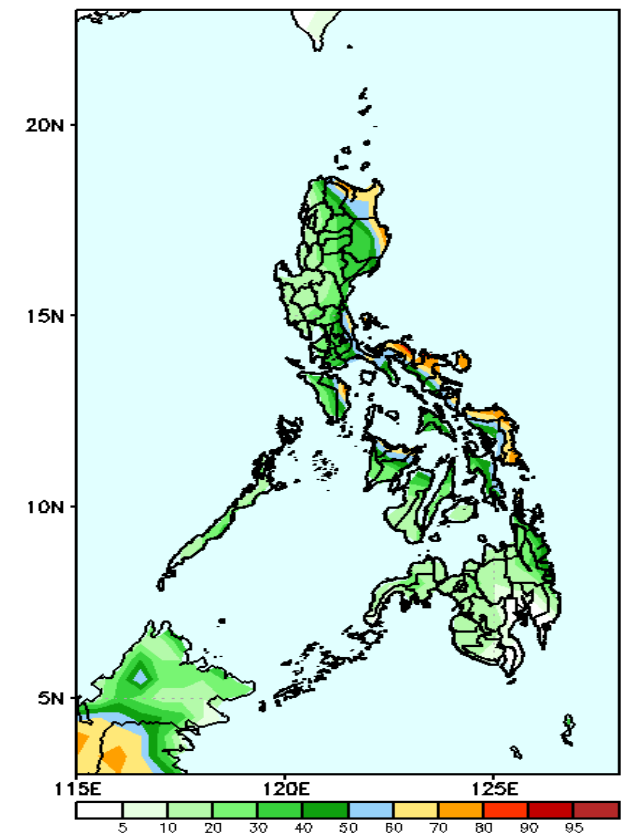
Rainfall deficit of 20-60mm is most likely in most parts of the country during the forecast period.

GEFS Week-2 Exceedance Prob. > 25mm
Valid: 20221128 - 20221204



High probability of rainfall to exceed 25mm in Apayao, most parts of Eastern and Southern Luzon, some areas in Western Visayas, Cebu, most parts of eastern Visayas, CARAGA and some areas in central Mindanao and Zamboanga Peninsula while less likely for the rest of the country during the forecast period

GEFS Week-2 Exceedance Prob. > 50mm
Valid: 20221128 - 20221204

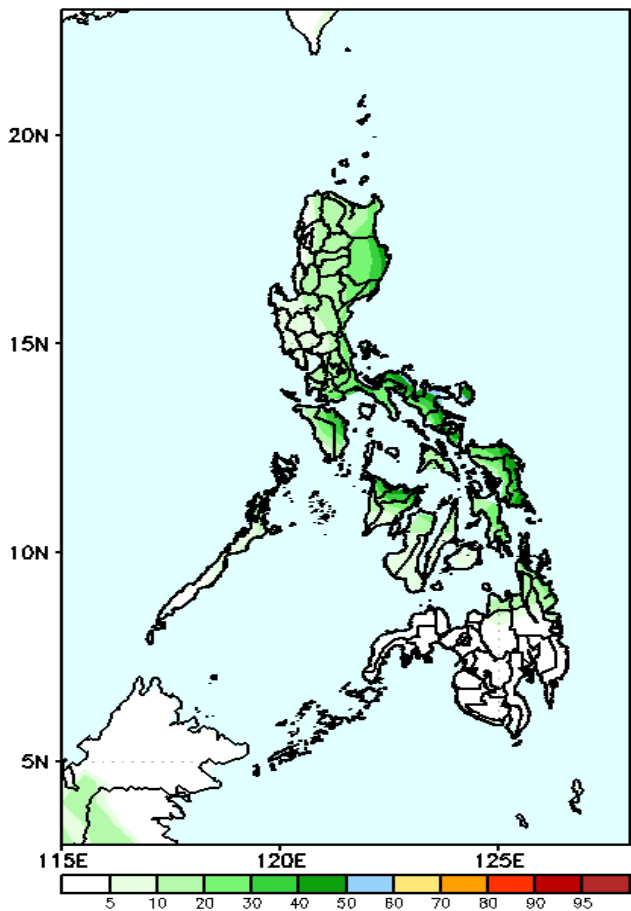


High probability of rainfall to exceed 50mm in the eastern parts of Cagayan and Isabela, most parts of Bicol region and Northern and eastern Samar while less likely for the rest of the country

Exceedance Probability > 100/150/200 mm

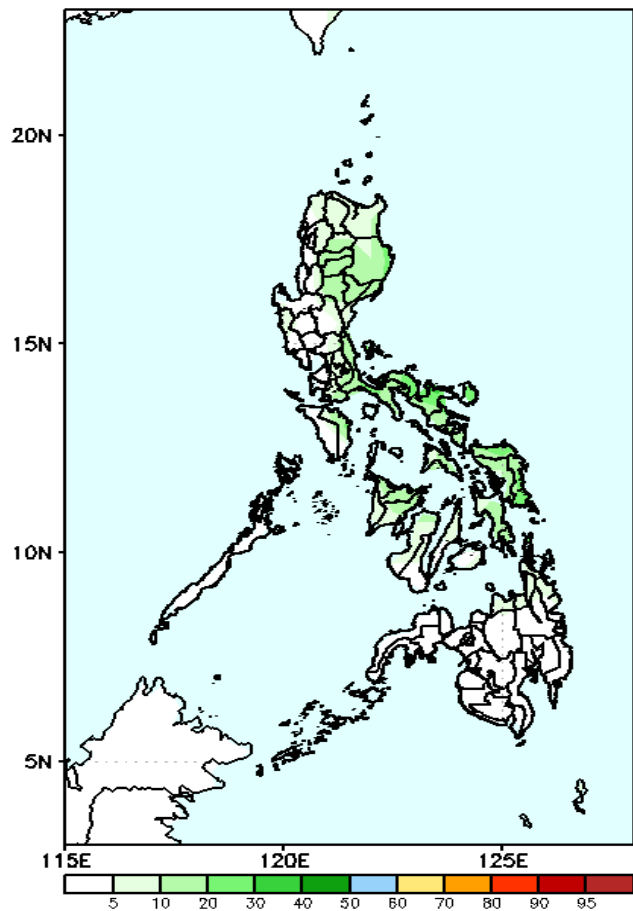
Week 2: Nov 28- Dec 04, 2022

GEFS Week-2 Exceedance Prob. > 100mm
Valid: 20221128 – 20221204



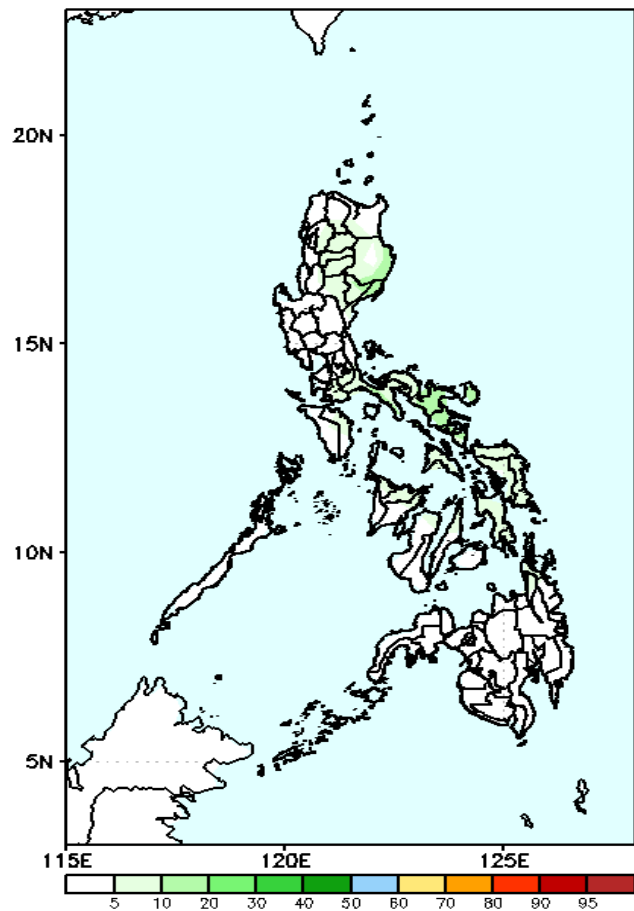
Low probability of rainfall to exceed 100mm in most parts of the country during the forecast period.

GEFS Week-2 Exceedance Prob. > 150mm
Valid: 20221128 – 20221204



Low probability of rainfall to exceed 150mm in most parts of the country during the forecast period.

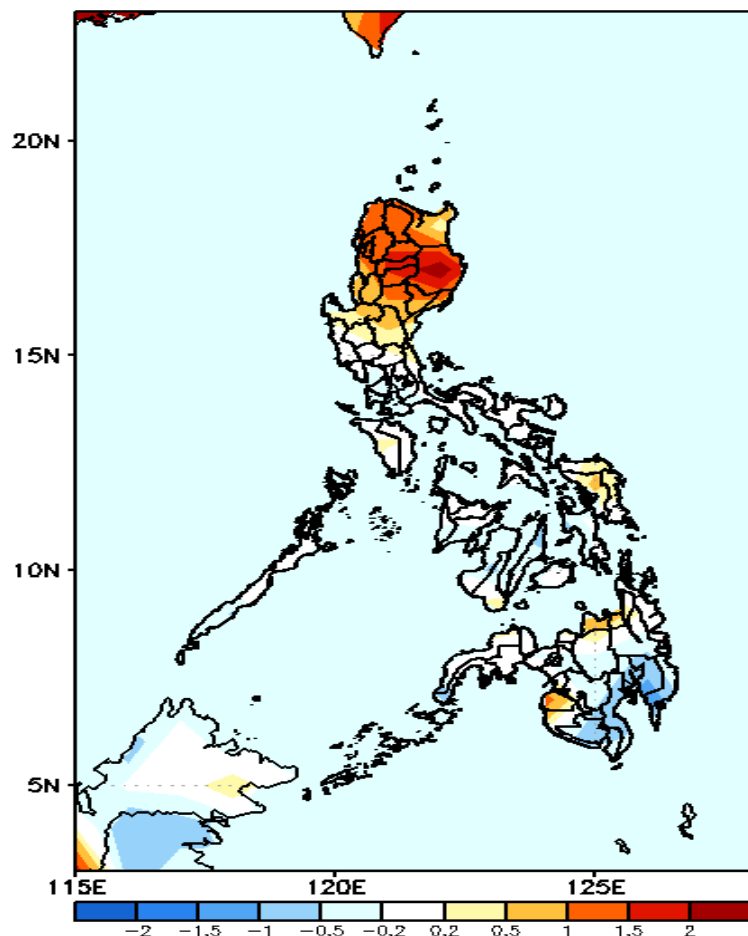
GEFS Week-2 Exceedance Prob. > 200mm
Valid: 20221128 – 20221204



Low probability of rainfall to exceed 200mm in most parts of the country during the forecast period.

GEFS Week-1 & 2 Forecasts: T2m Anomaly

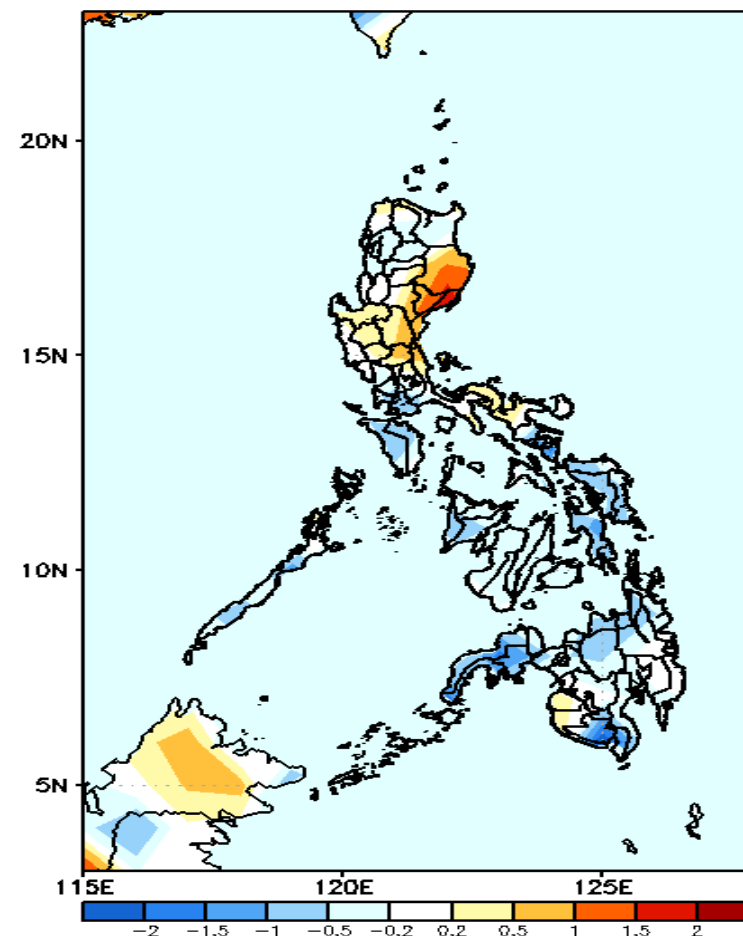
GEFS Week-1 T2m Anomaly
Valid: 20221121 - 20221127



2m Temperature Week 1: Nov 21-27, 2022

Warmer than average surface air temperature will likely experience in most parts Northern Luzon while average to slightly warmer for the rest of the country except in southern Mindanao (slightly cooler) during the forecast period.

GEFS Week-2 T2m Anomaly
Valid: 20221128 - 20221204



2m Temperature Week 2: Nov 28- Dec 04, 2022

Near to warmer than average surface air temperature will likely experience in most parts Luzon (except MIMAROPA) while slightly cooler to cooler than average surface air temperature will be likely for the rest of the country during the forecast period.