



USAID
FROM THE AMERICAN PEOPLE



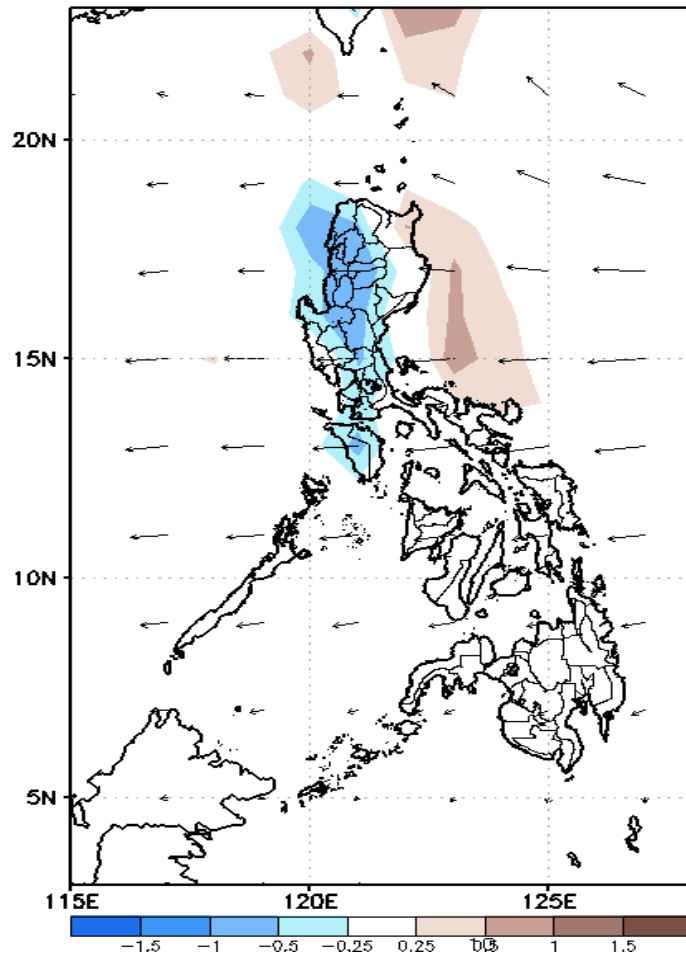
Week 1 & Week 2 Forecast for the Philippines using GEFS Model



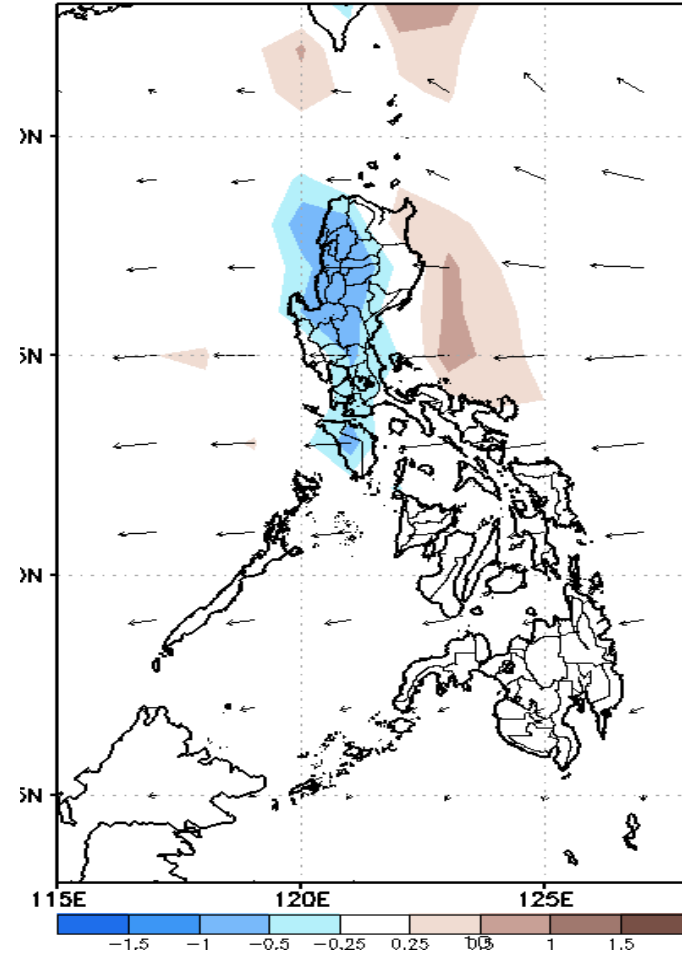
GEFS Week-1 Forecasts: Divergence & Wind

Week 1: Nov 21-27, 2019

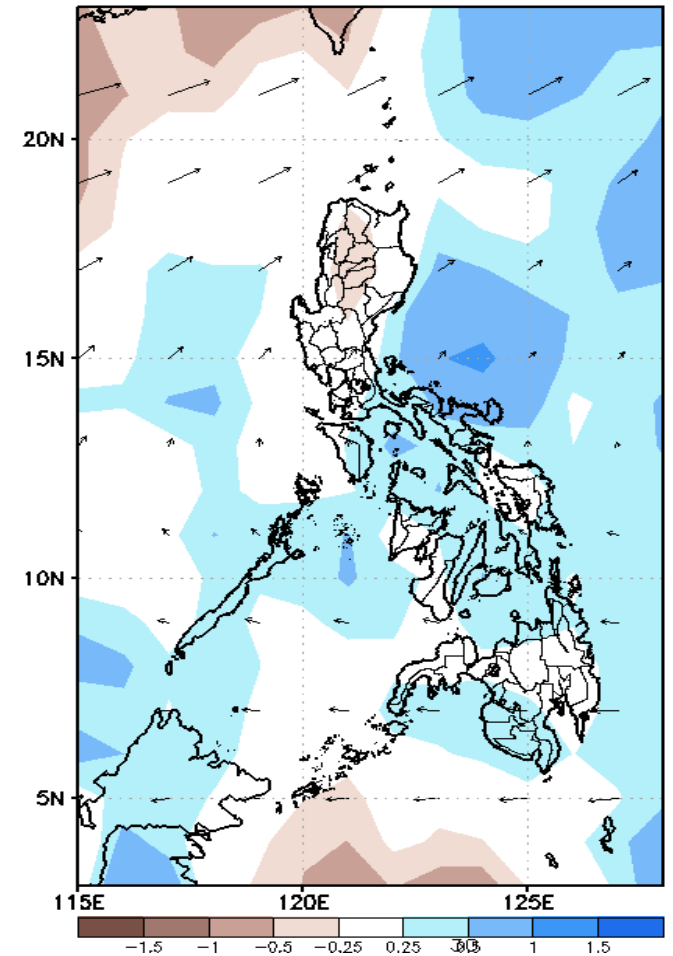
GEFS Week-1 850-hPa Divergence and Wind
Valid: 20191121 - 20191127



GEFS Week-1 700-hPa Divergence and Wind
Valid: 20191121 - 20191127



GEFS Week-1 200-hPa Divergence and Wind
Valid: 20191121 - 20191127

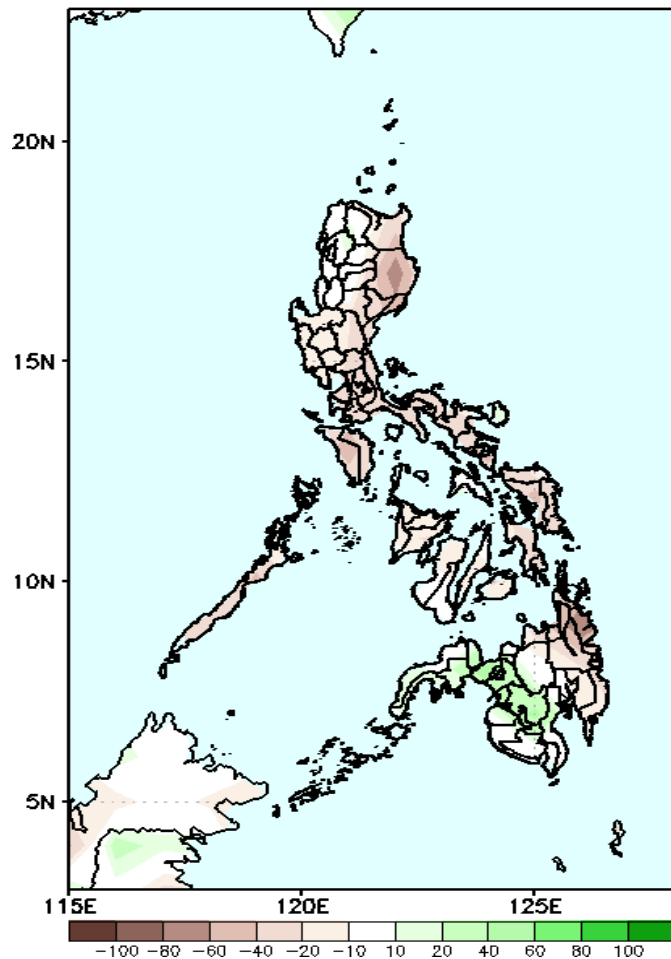


Low level (850 hPa) Divergence (Brown shaded color) suggest likelihood of heavy precipitation in western Luzon during the forecast period. Easterly wind affecting most of the country

Precipitation Anomaly and Exceedance Probability > 25/50 mm

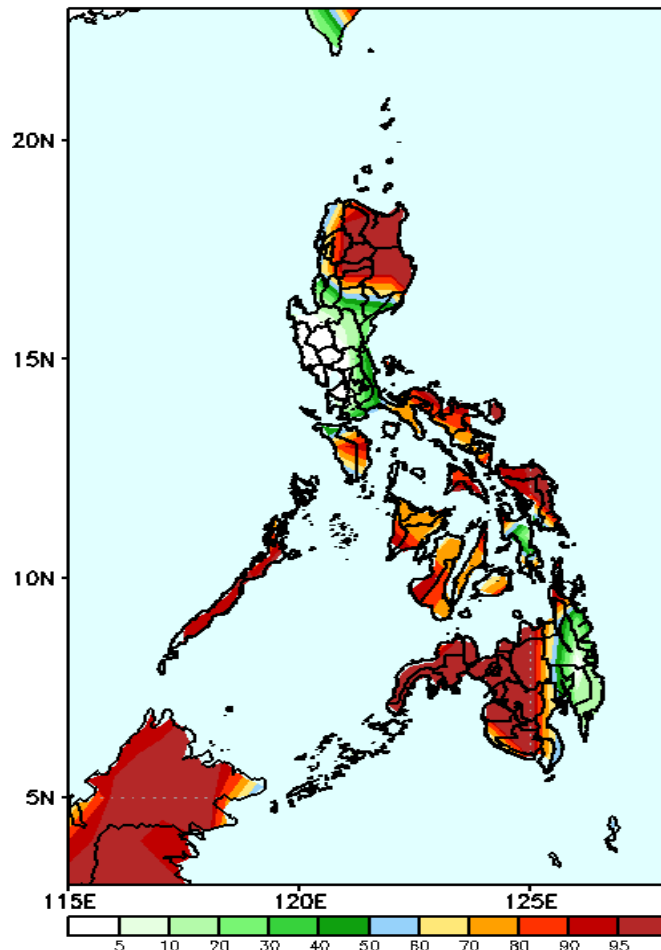
Week 1: Nov 21-27, 2019

GEFS Week-1 Precip Anomaly
Valid: 20191121 - 20191127



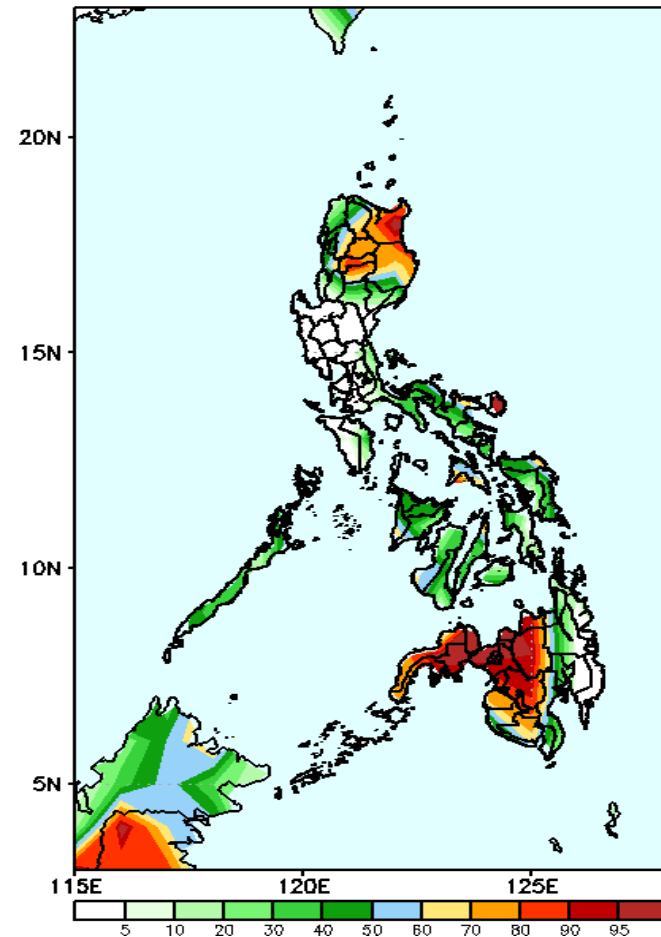
Most parts of the country will likely to have rainfall deficit of up to 90 mm especially in the eastern part.

GEFS Week-1 Exceedance Prob. > 25mm
Valid: 20191121 - 20191127



High probabilities for rainfall exceeding 25mm in northern Luzon, Visayas and western Mindanao.

GEFS Week-1 Exceedance Prob. > 50mm
Valid: 20191121 - 20191127

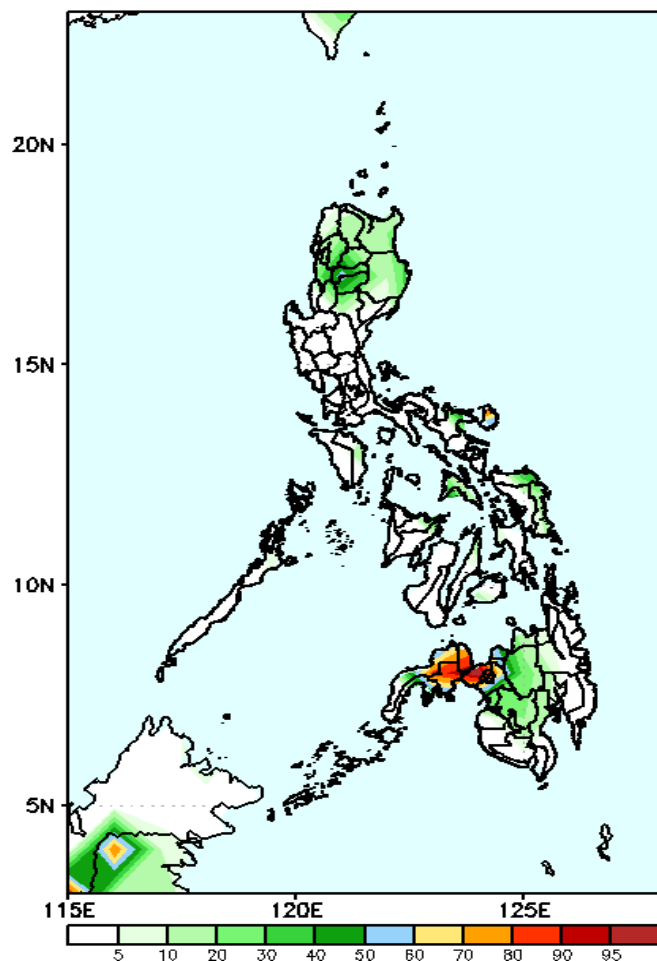


High probabilities for rainfall exceeding 50mm in northeastern Luzon and western Mindanao while less likely for the rest of the country during the forecast period.

Exceedance Probability > 100/150/200 mm

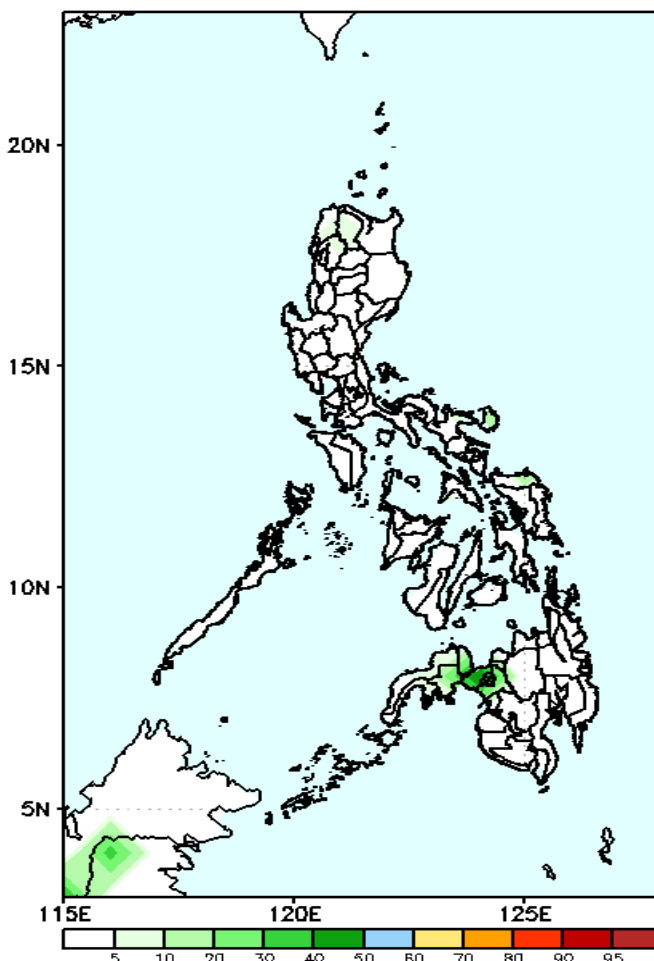
Week 1: Nov 21-27, 2019

GEFS Week-1 Exceedance Prob. > 100mm
Valid: 20191121 - 20191127



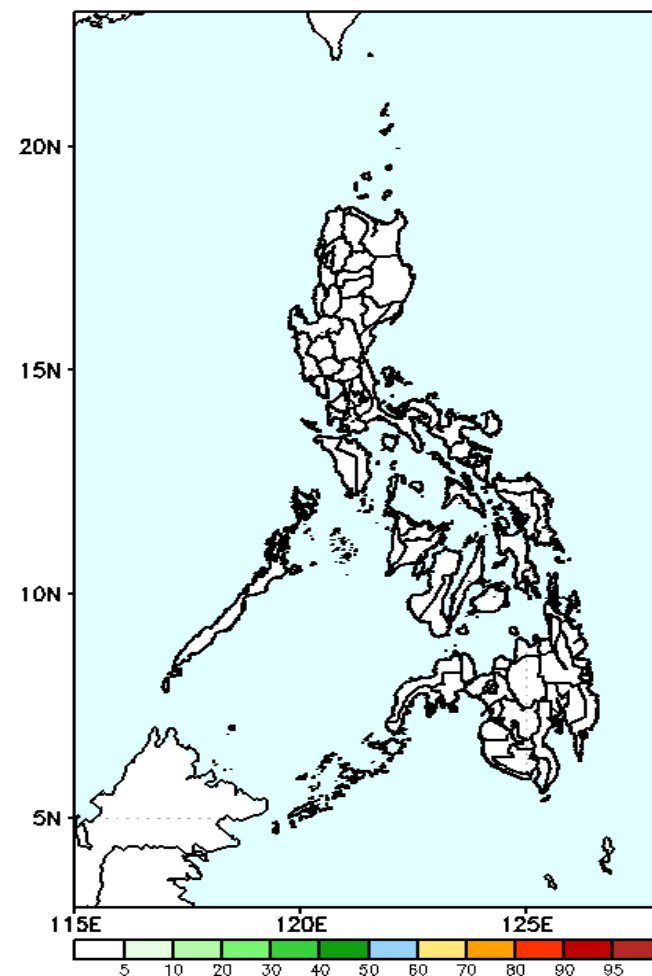
Less probabilities for rainfall exceeding 100mm in most parts of the country except in Reg 9 where 70-90% chance is expected.

GEFS Week-1 Exceedance Prob. > 150mm
Valid: 20191121 - 20191127



Less probability of rainfall to exceed 150mm in most parts of the country during the forecast period.

GEFS Week-1 Exceedance Prob. > 200mm
Valid: 20191121 - 20191127

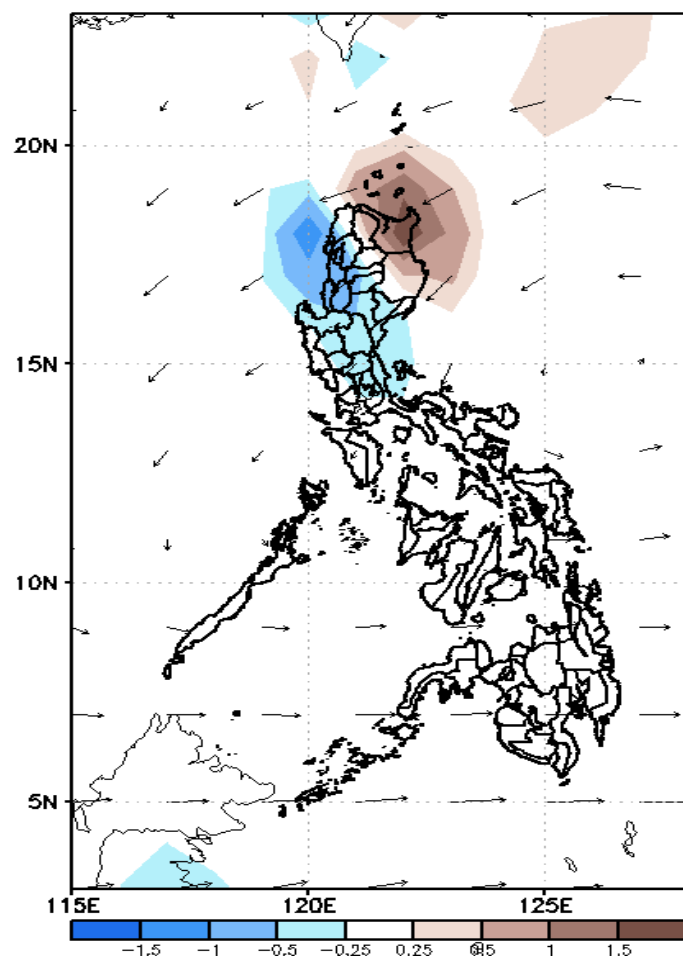


Less probability of rainfall to exceed 200 mm in most parts of the country during the forecast period.

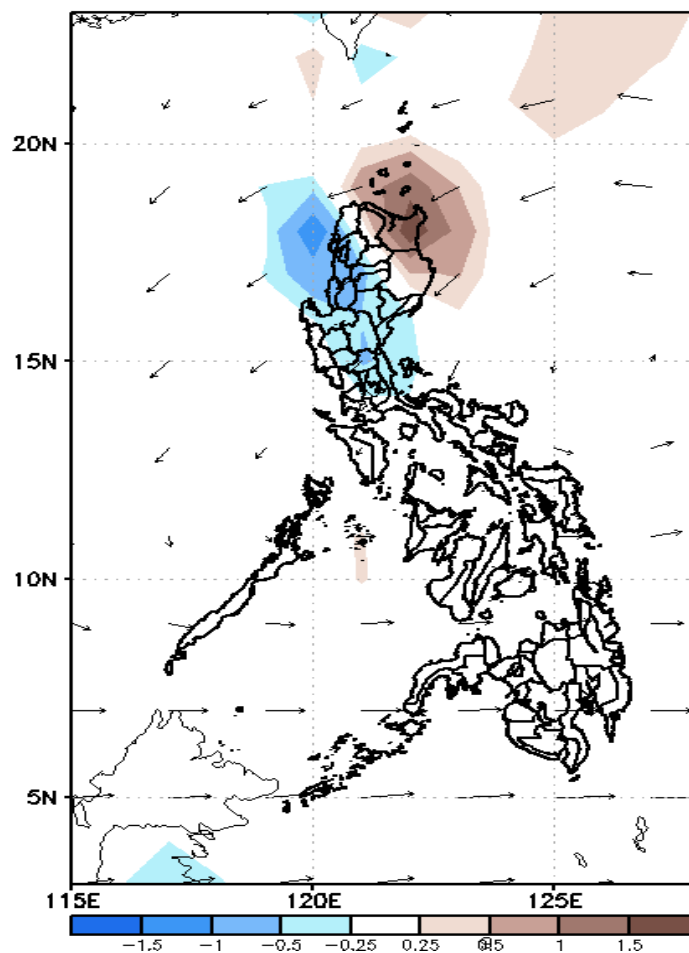
GEFS Week-2 Forecasts: Divergence & Wind

Week 2: Nov 28-Dec 04, 2019

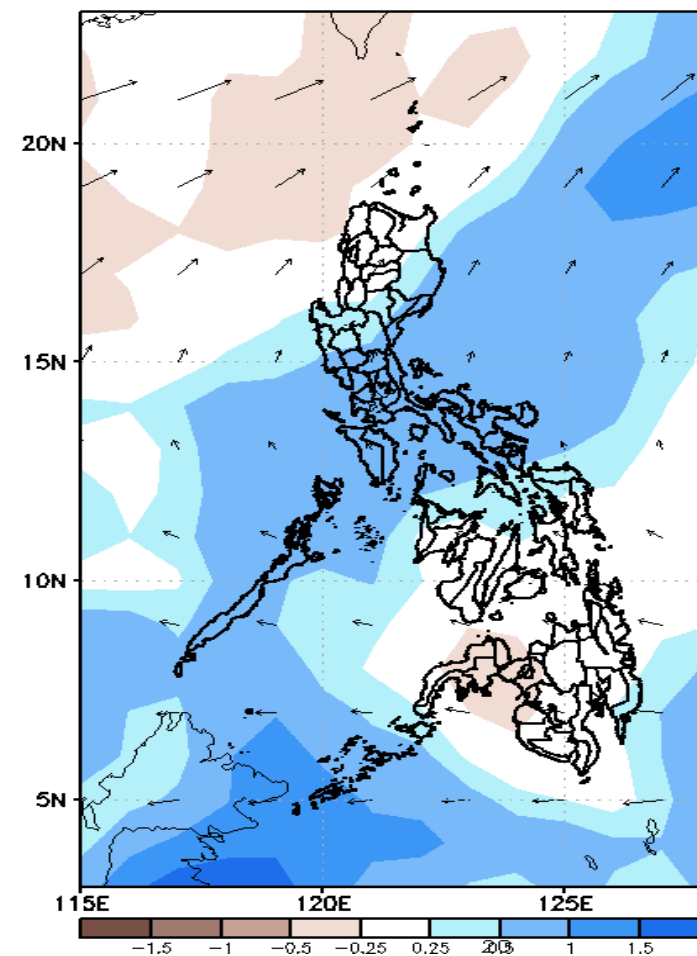
GEFS Week-2 850-hPa Divergence and Wind
Valid: 20191128 - 20191204



GEFS Week-2 700-hPa Divergence and Wind
Valid: 20191128 - 20191204



GEFS week-2 200-hPa Divergence and Wind
Valid: 20191128 - 20191204

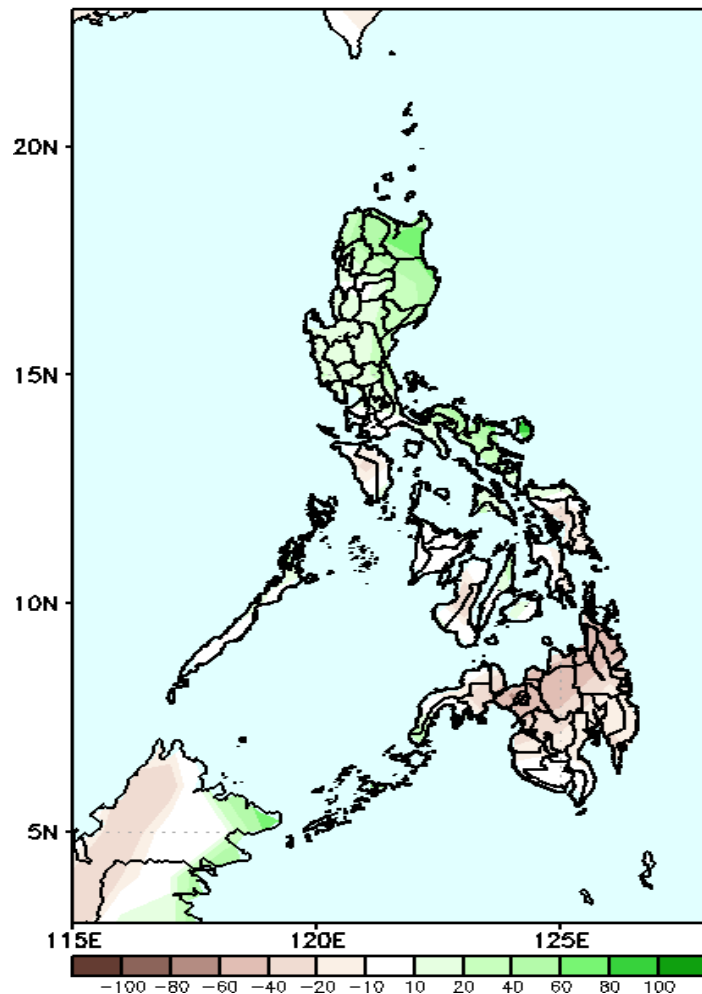


Low level (850 hPa) Divergence (Brown shaded color) suggest likelihood of heavy precipitation in western Luzon and below normal in Region 2. Moreover a cyclonic wind pattern is affecting most parts of Luzon during the forecast period.

Precipitation Anomaly and Exceedance Probability > 25/50 mm

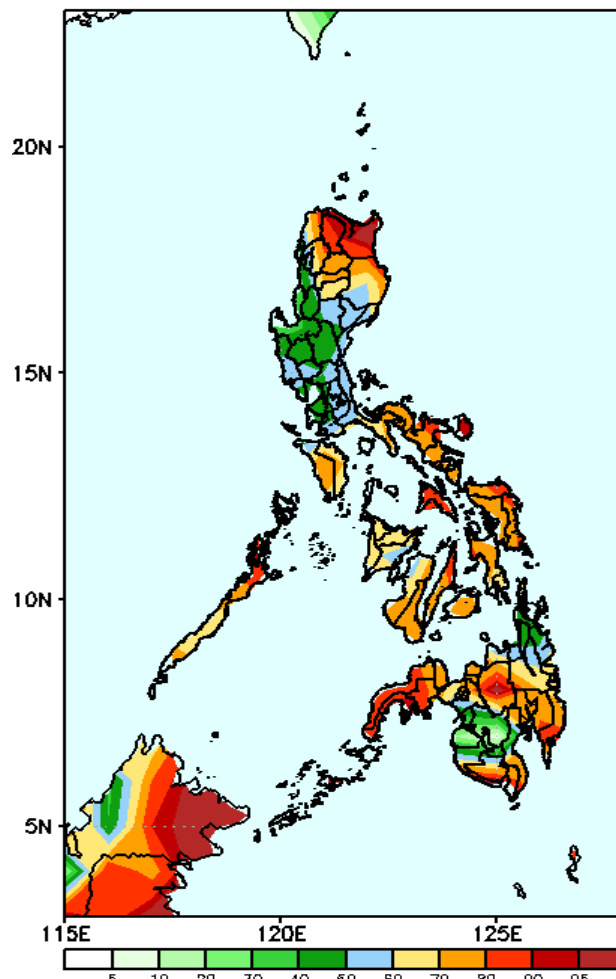
Week 2: Nov 28-Dec 04, 2019

GEFS Week-2 Precip Anomaly
Valid: 20191128 - 20191204



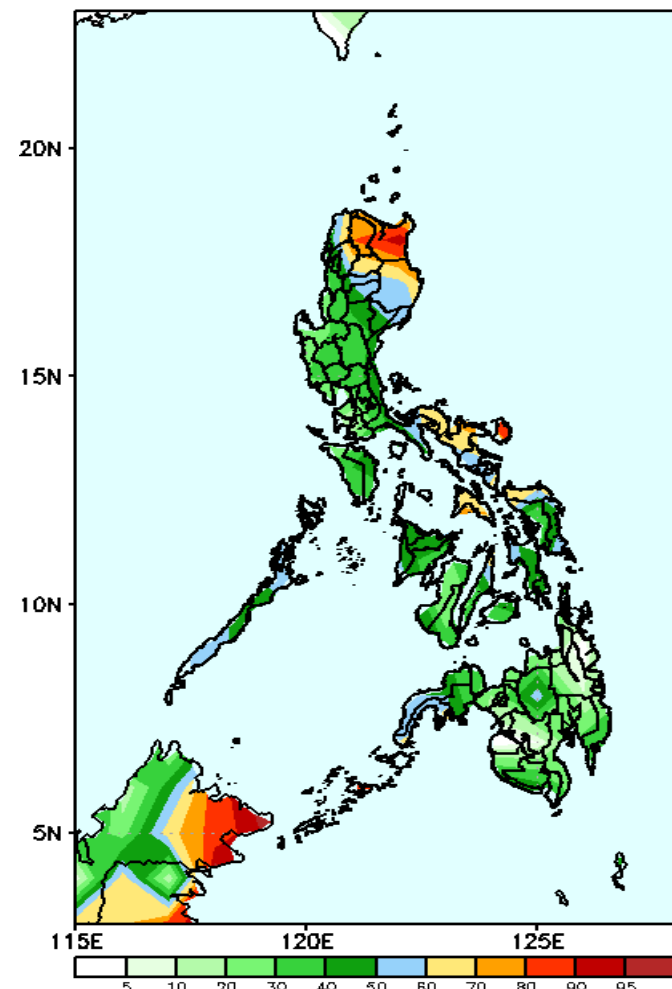
Increased of rainfall up to 60 mm is likely in eastern Luzon and Visayas, while the rest of the country will have a rainfall deficit of up to 50 mm.

GEFS Week-2 Exceedance Prob. > 25mm
Valid: 20191128 - 20191204



High probabilities for rainfall exceeding 25mm in most parts of the country except in southern Luzon.

GEFS Week-2 Exceedance Prob. > 50mm
Valid: 20191128 - 20191204



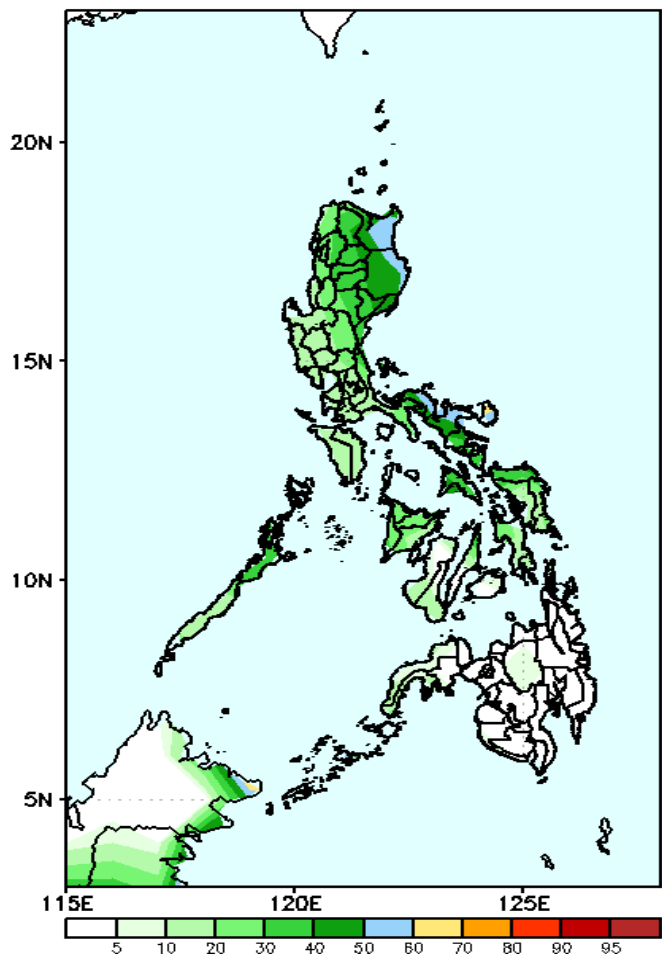
High probabilities for rainfall exceeding 50mm in northeastern Luzon and eastern Visayas, while less likely for the rest of the country.



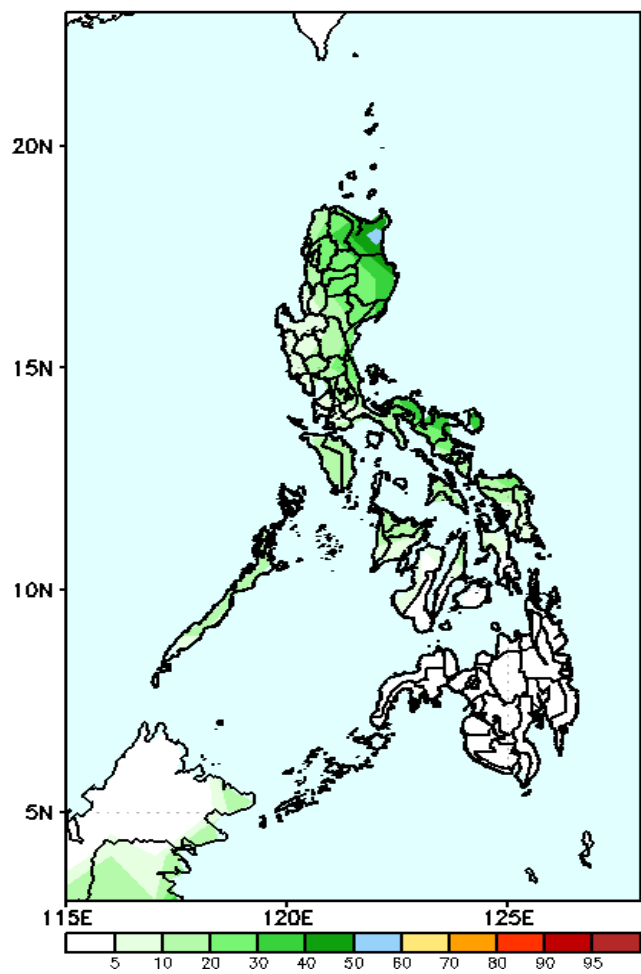
Exceedance Probability > 100/150/200 mm

Week 2: Nov 28-Dec 04, 2019

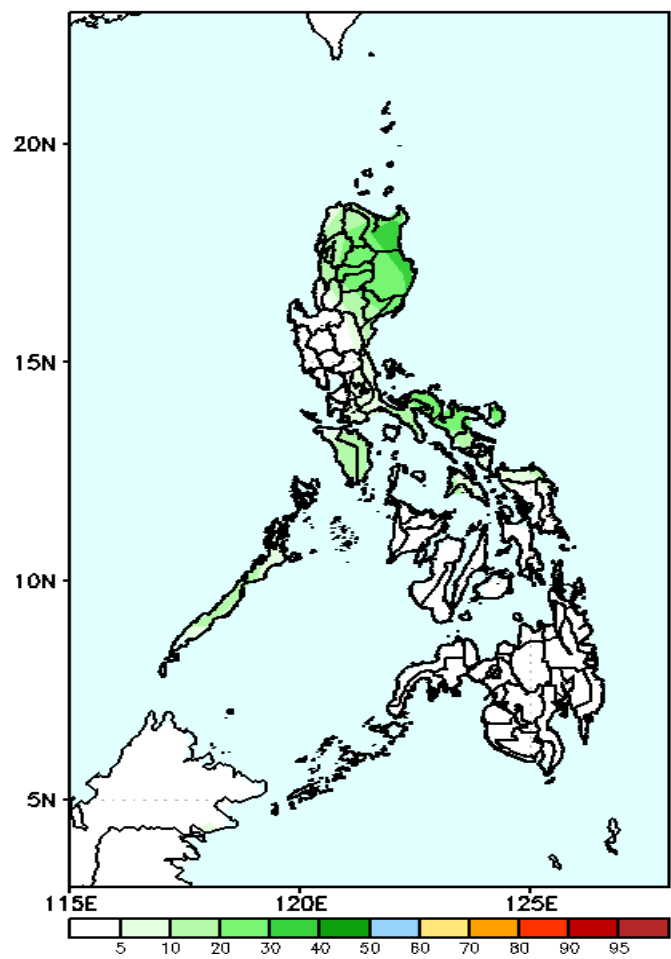
GEFS Week-2 Exceedance Prob. > 100mm
Valid: 20191128 – 20191204



GEFS Week-2 Exceedance Prob. > 150mm
Valid: 20191128 – 20191204



GEFS Week-2 Exceedance Prob. > 200mm
Valid: 20191128 – 20191204



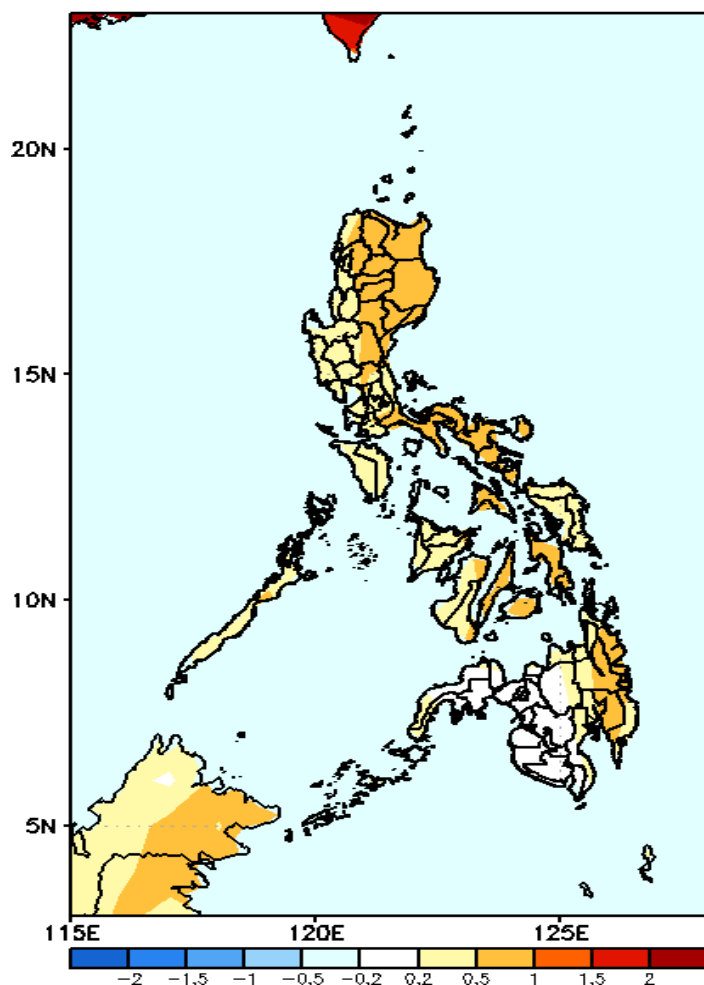
Less probability of rainfall to exceed 100mm in most parts of the country except in the northeastern parts of Luzon and Bicol region with 50-60% chance to exceed 100mm rainfall.

Less than 50% probability of rainfall to exceed 150 mm in most parts of the country.

Less probability of rainfall to exceed 200 mm in most parts of the country during the forecast period.

GEFS Week-1 & 2 Forecasts: T2m Anomaly

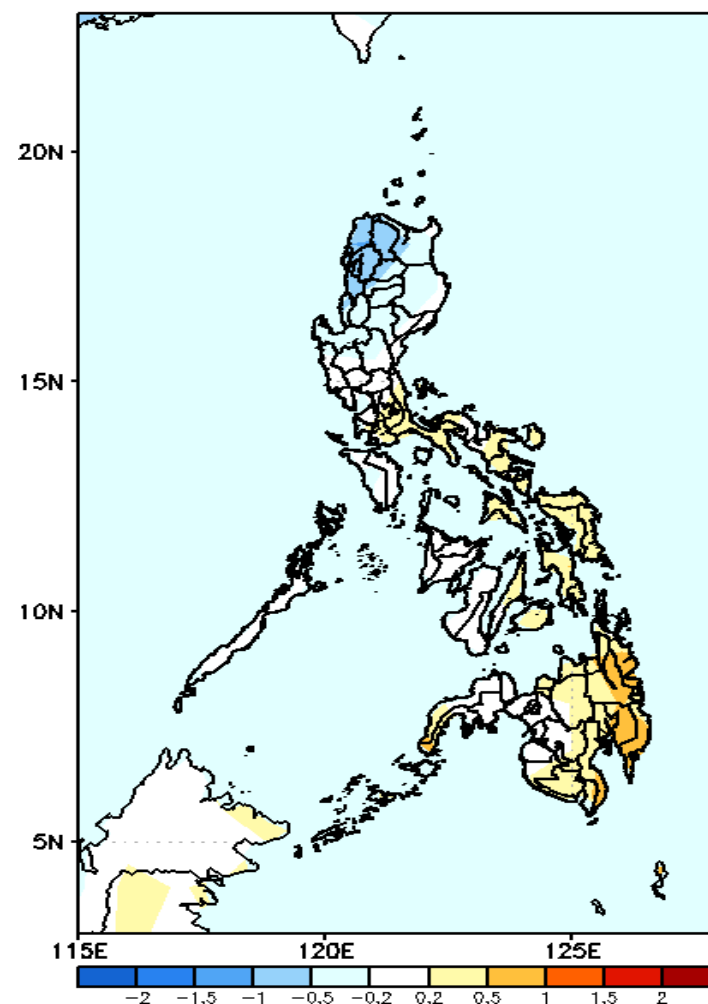
GEFS Week-1 T2m Anomaly
Valid: 20191121 - 20191127



2m Temperature Week1 (Nov 21-27, 2019)

Slightly warmer to warmer than average surface air temperature will likely experience in the eastern part of the country while average temperature for the rest of the country.

GEFS Week-2 T2m Anomaly
Valid: 20191128 - 20191204



2m Temperature Week 2: Nov 28-Dec04, 2019

Average to slightly warmer surface air temperature are expected in most parts of the country except in northwestern Luzon where slightly cooler temperature is most likely.