



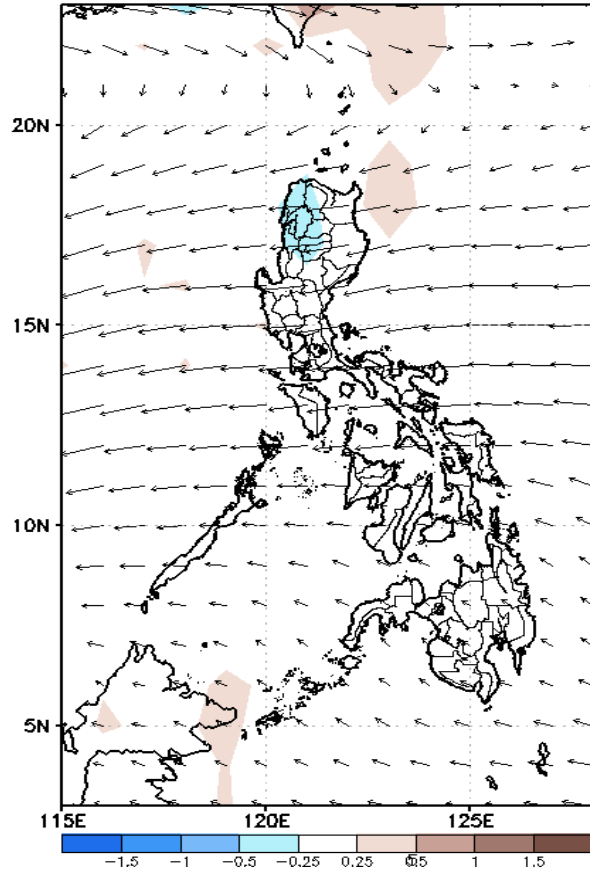
# Week 1 & Week 2 Forecast for the Philippines using GEFS Model



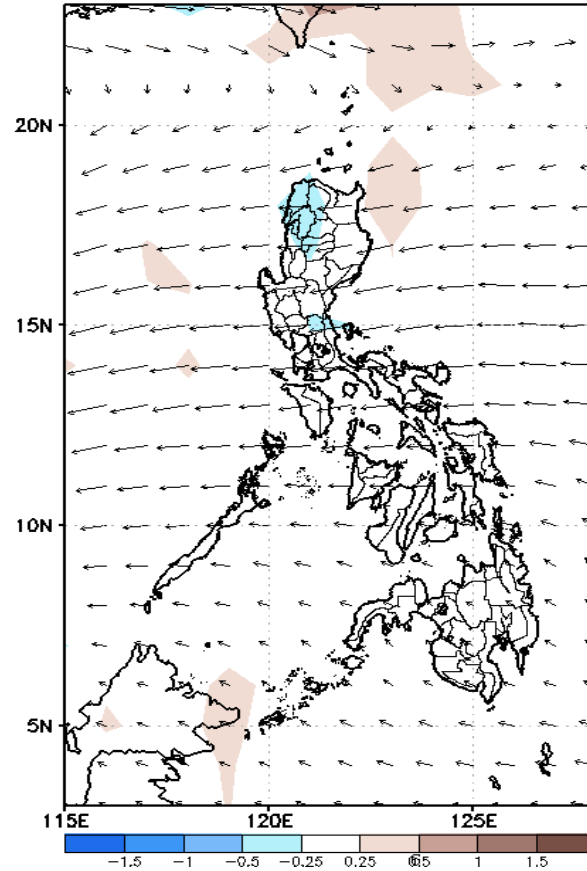
# GEFS Week-1 Forecasts: Divergence & Wind Anomaly

## Week 1: Oct 21-27 2021

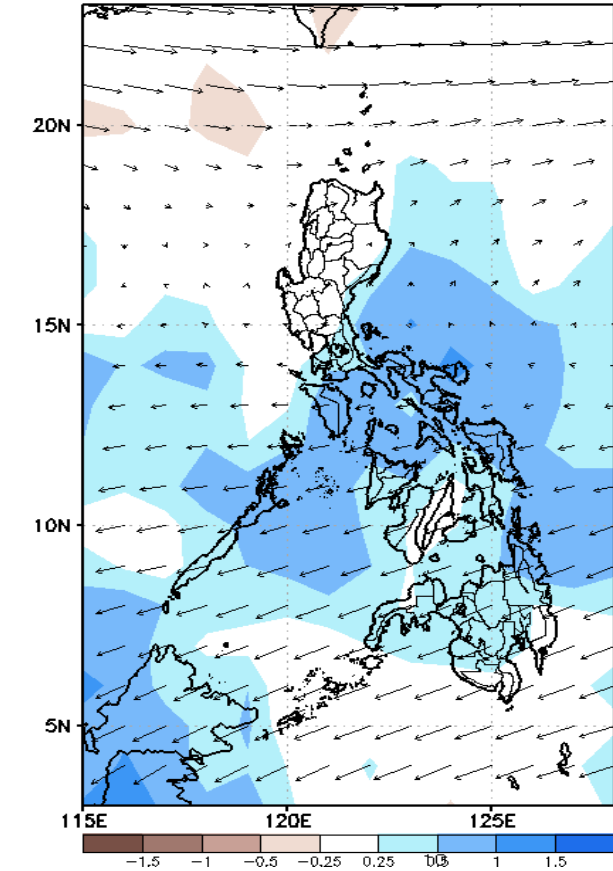
GEFS Week-1 850-hPa Divergence and Wind Anom  
Valid: 20211021 - 20211027



GEFS Week-1 700-hPa Divergence and Wind Anom  
Valid: 20211021 - 20211027



GEFS Week-1 200-hPa Divergence and Wind Anom  
Valid: 20211021 - 20211027

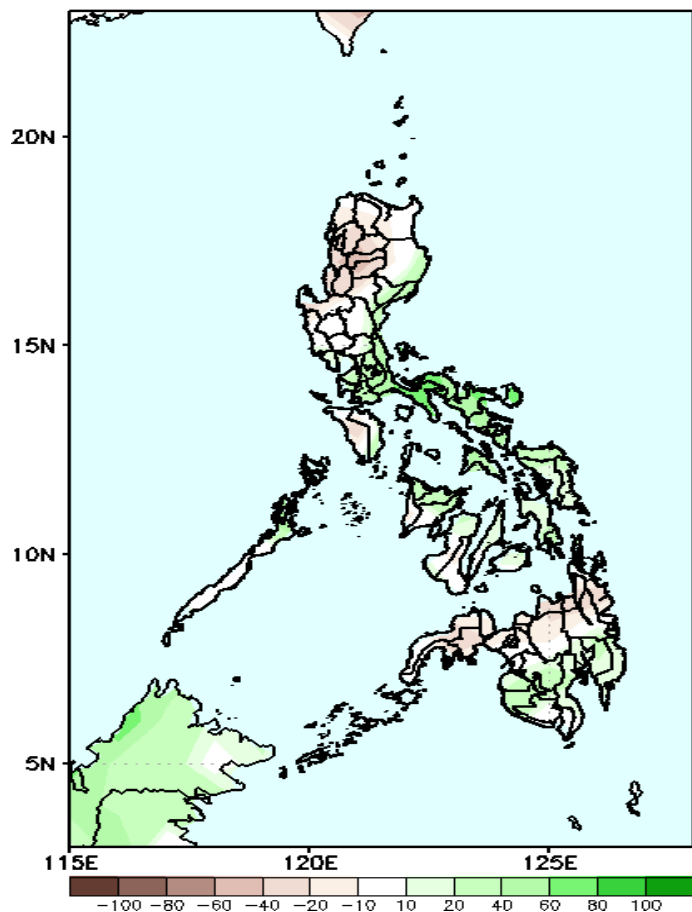


Upper and low level Divergence suggest likelihood of precipitation in most parts of Southern Luzon, and most parts of Visayas and Mindanao. Northeasterly windflow affecting Northern-Extreme Northern Luzon while Easterlies affecting most parts of the country attributing to light to moderate rains due to thunderstorms during the forecast period.

# Precipitation Anomaly and Exceedance Probability > 25/50 mm

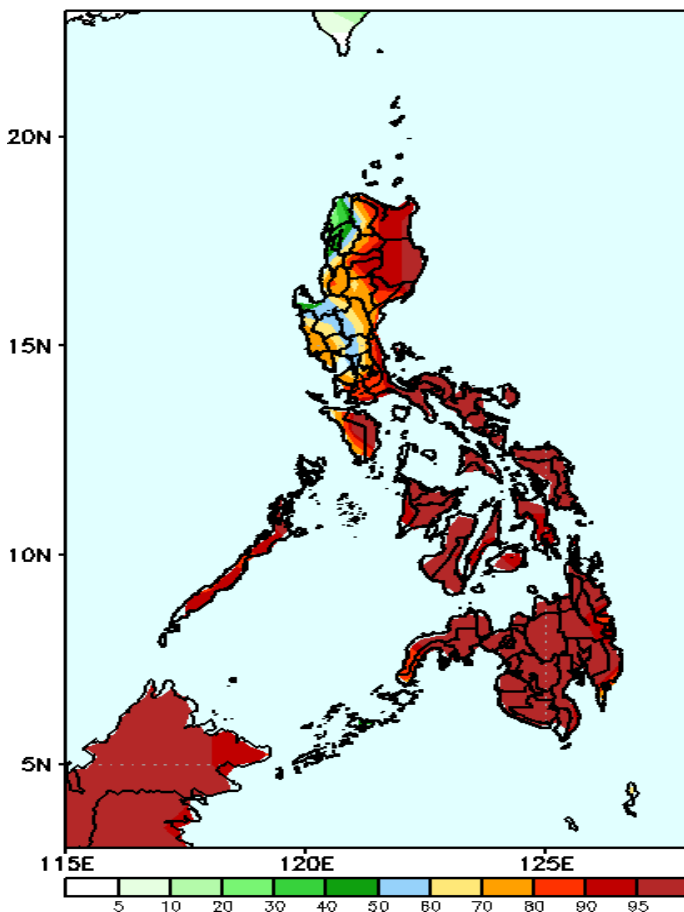
## Week 1: Oct 21-27 2021

GEFS Week-1 Precip Anomaly  
Valid: 20211021 - 20211027



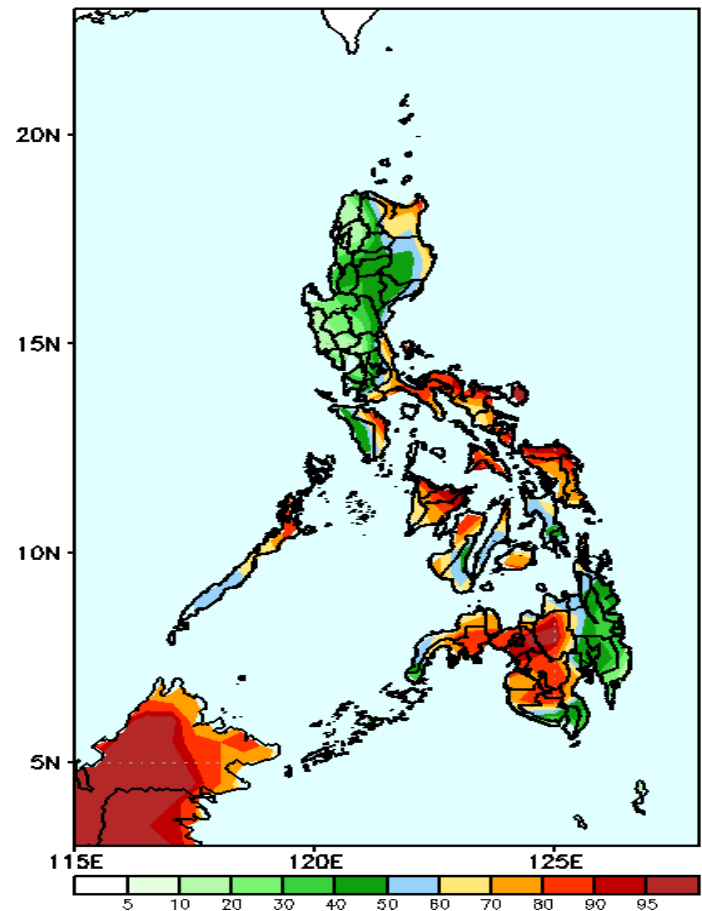
Rainfall deficit of 20-40mm in northeastern Luzon & northern Mindanao while increase of rainfall of 20-40mm for the rest of the country during the forecast period.

GEFS Week-1 Exceedance Prob. > 25mm  
Valid: 20211021 - 20211027



High probability of rainfall to exceed 25mm in most parts of the country except in Ilocos Norte during the forecast period.

GEFS Week-1 Exceedance Prob. > 50mm  
Valid: 20211021 - 20211027

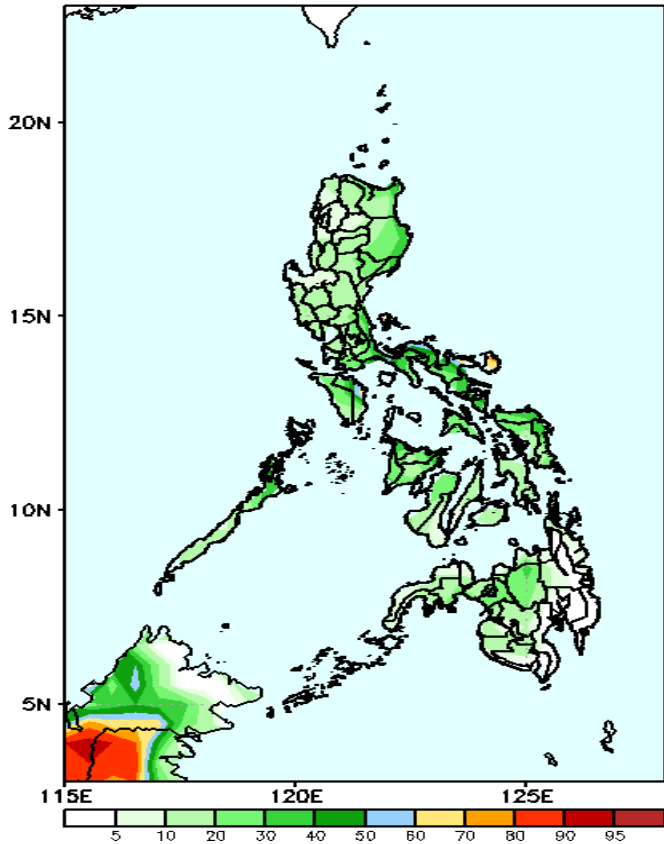


High probability of rainfall to exceed 50mm in Cagayan, most parts of Southern Luzon, Visayas and western parts of Mindanao including Bukidnon while less likely for the rest of the country during the forecast period.

# Exceedance Probability > 100/150/200 mm

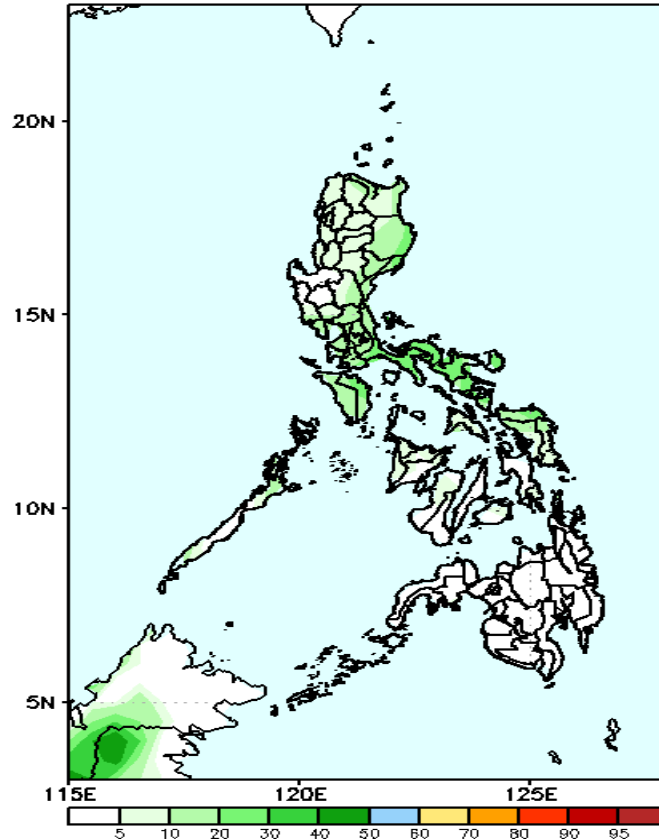
Week 1: Oct 21-27 2021

GEFS Week-1 Exceedance Prob. > 100mm  
Valid: 20211021 - 20211027



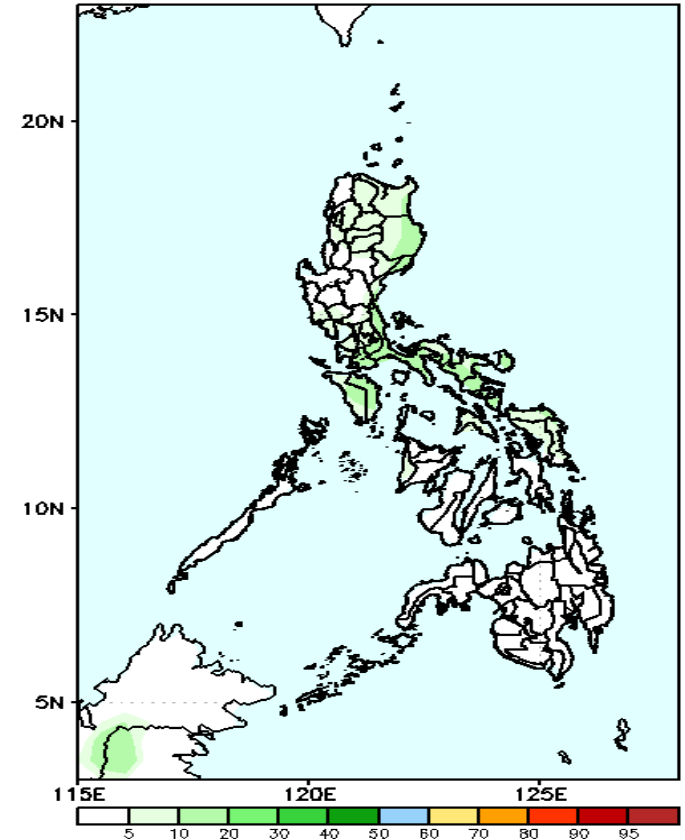
Less probability of rainfall to exceed 100mm in most parts of the country is expected during the forecast period.

GEFS Week-1 Exceedance Prob. > 150mm  
Valid: 20211021 - 20211027



Less probability of rainfall to exceed 150mm in most parts of the country is expected during the forecast period.

GEFS Week-1 Exceedance Prob. > 200mm  
Valid: 20211021 - 20211027

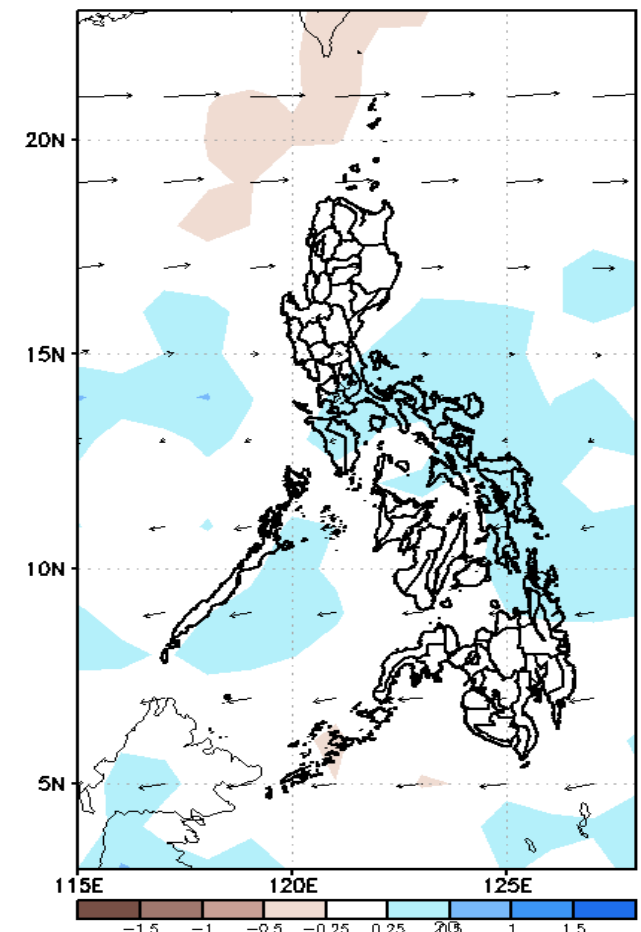
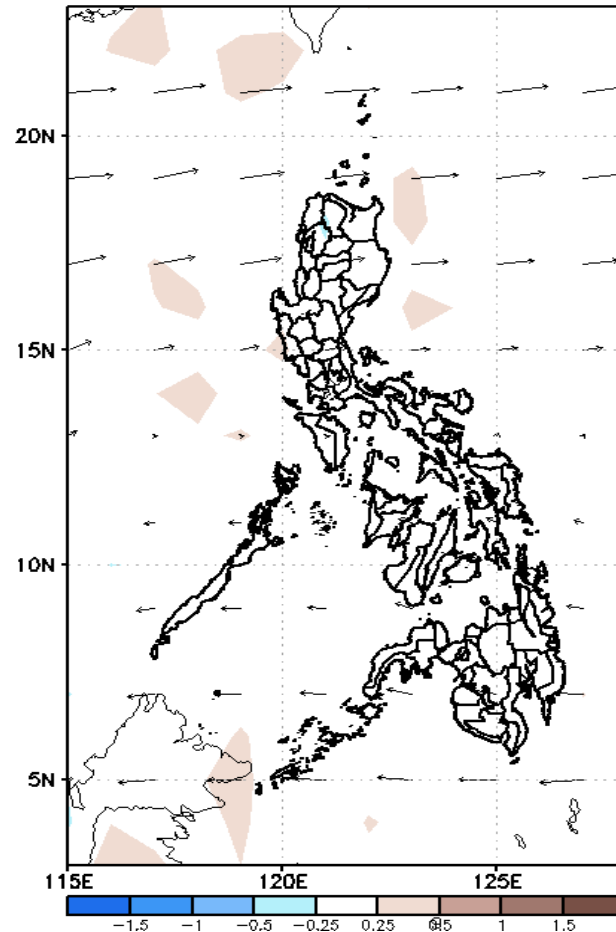
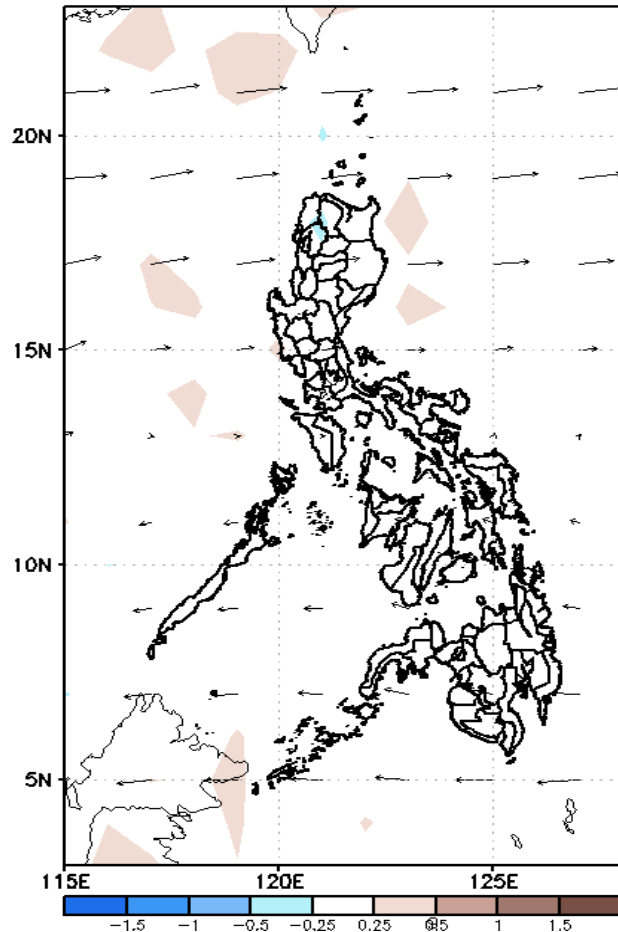


Less probability of rainfall to exceed 200mm in most parts of the country is expected during the forecast period.

# GEFS Week-2 Forecasts: Divergence & Wind Anomaly

Week 2: Oct 28-Nov 03, 2021

GEFS Week-2 850-hPa Divergence and Wind Anom  
Valid: 20211028 - 20211103  
GEFS Week-2 700-hPa Divergence and Wind Anom  
Valid: 20211028 - 20211103  
GEFS week-2 200-hPa Divergence and Wind Anomc  
Valid: 20211028 - 20211103

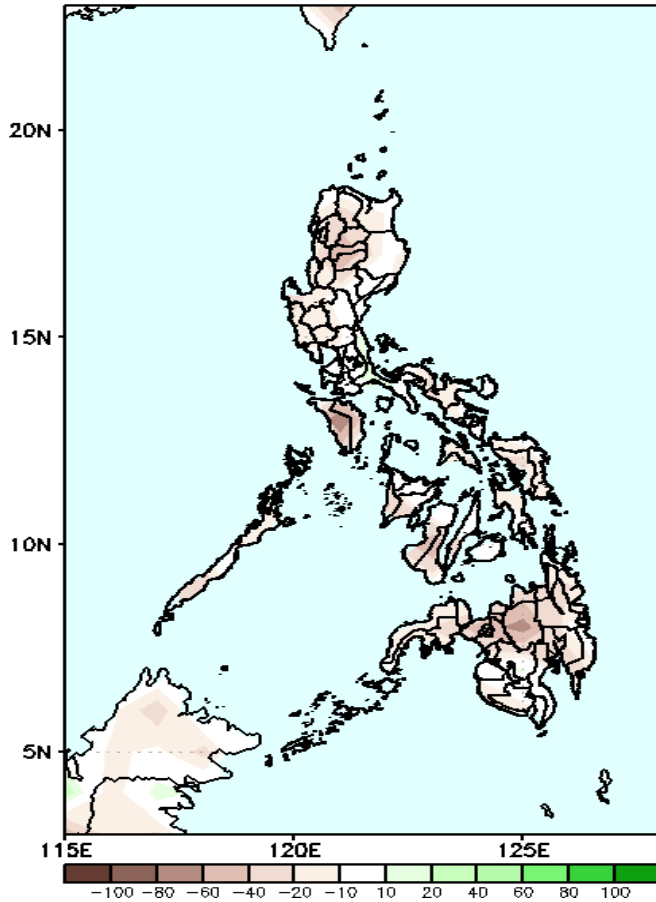


Upper and low level Divergence suggest likelihood of light precipitation in most parts of Southern Luzon and Eastern parts of Visayas and Mindanao. Northeasterly windflow affecting Northern-Extreme Northern Luzon while Easterlies affecting most parts of the country attributing to light to moderate rains due to thunderstorms during the forecast period.

# Precipitation Anomaly and Exceedance Probability > 25/50 mm

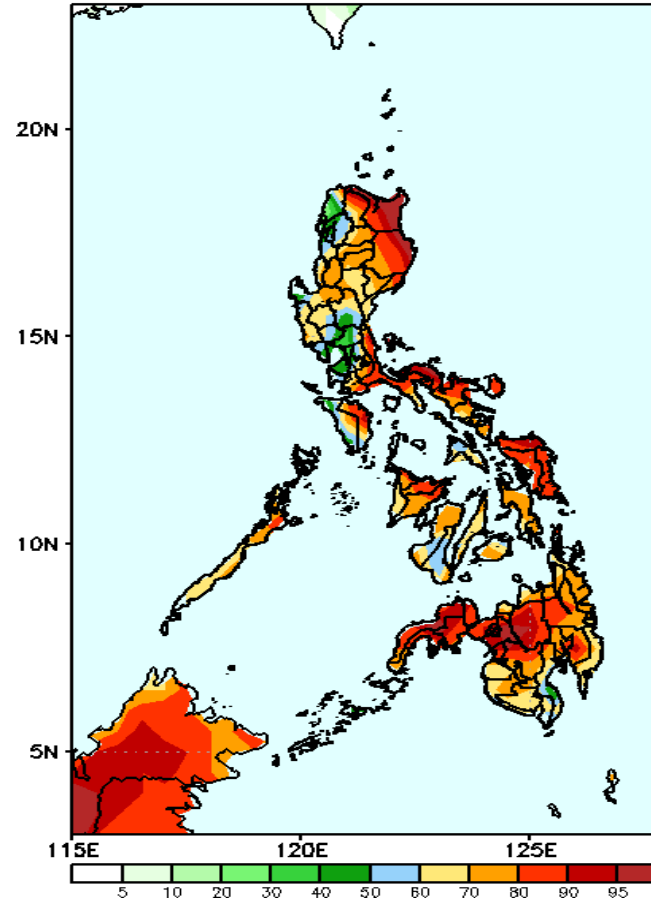
**Week 2: Oct 28-Nov 03, 2021**

GEFS Week-2 Precip Anomaly  
Valid: 20211028 - 20211103



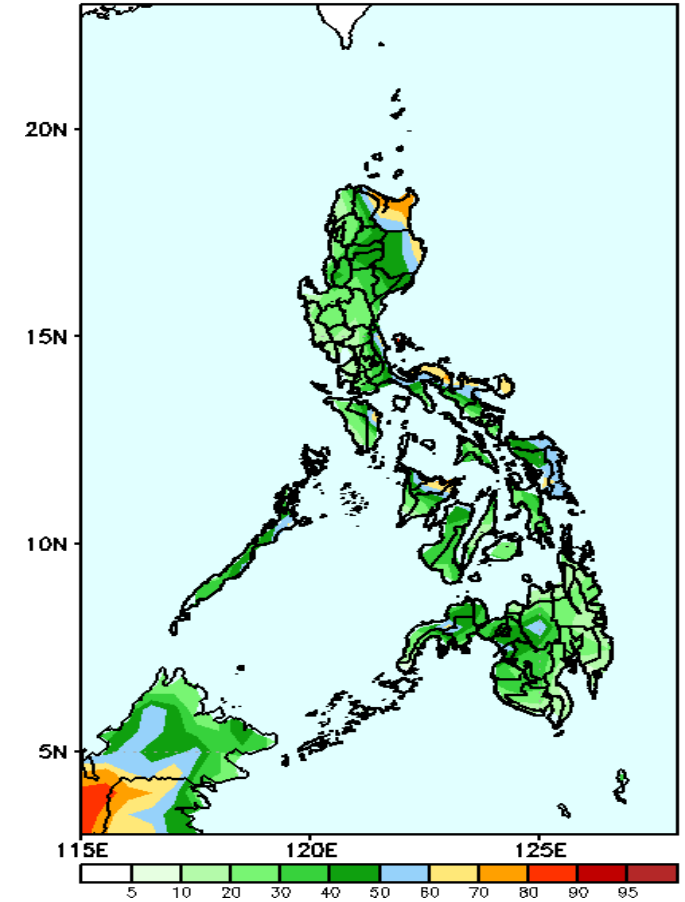
Rainfall deficit of 20-80mm in most parts of the country during the forecast period.

GEFS Week-2 Exceedance Prob. > 25mm  
Valid: 20211028 - 20211103



High probability of rainfall to exceed 25mm in most parts of the country during the forecast period.

GEFS Week-2 Exceedance Prob. > 50mm  
Valid: 20211028 - 20211103

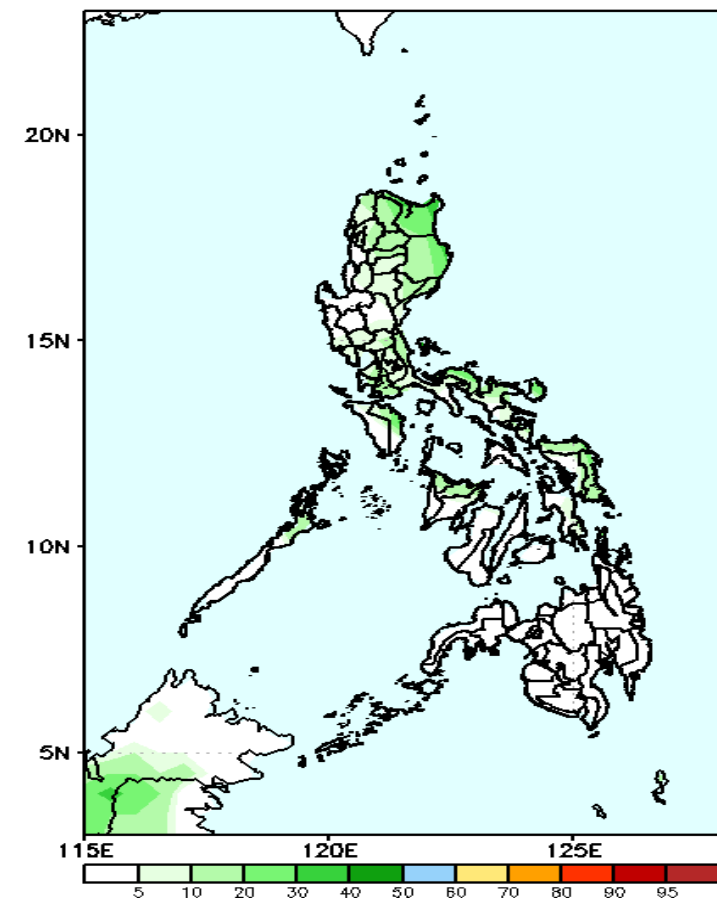


Less probability of rainfall to exceed 50mm in most parts of the country except in Cagayan during the forecast period.

# Exceedance Probability > 100/150/200 mm

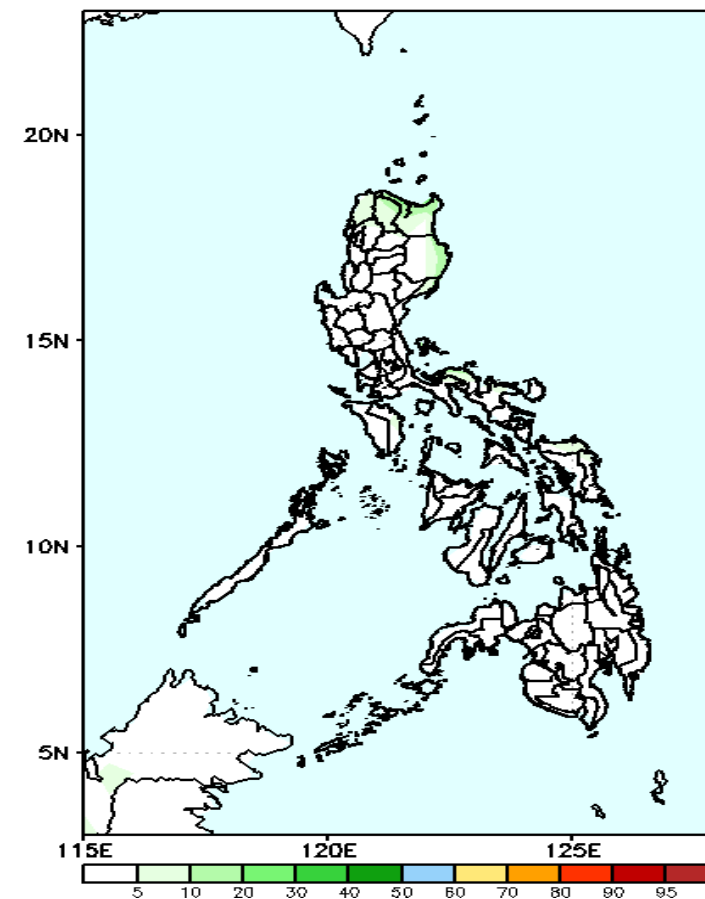
## Week 2: Oct 28-Nov 03, 2021

GEFS Week-2 Exceedance Prob. > 100mm  
Valid: 20211028 - 20211103



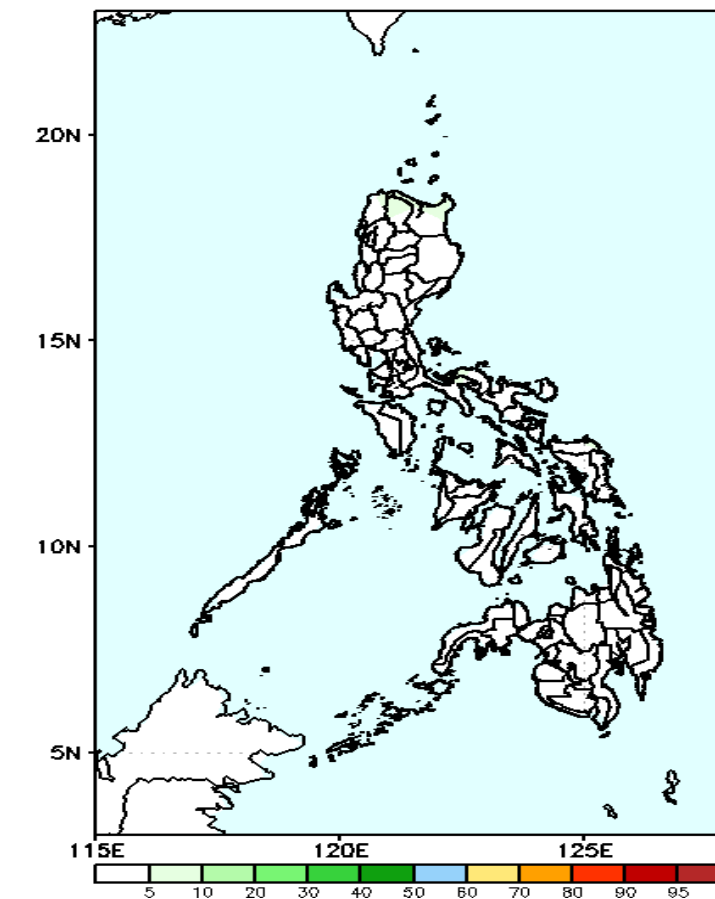
Less probability of rainfall to exceed 100mm in most parts of the country is expected during the forecast period.

GEFS Week-2 Exceedance Prob. > 150mm  
Valid: 20211028 - 20211103



Less probability of rainfall to exceed 150mm in most parts of the country is expected during the forecast period.

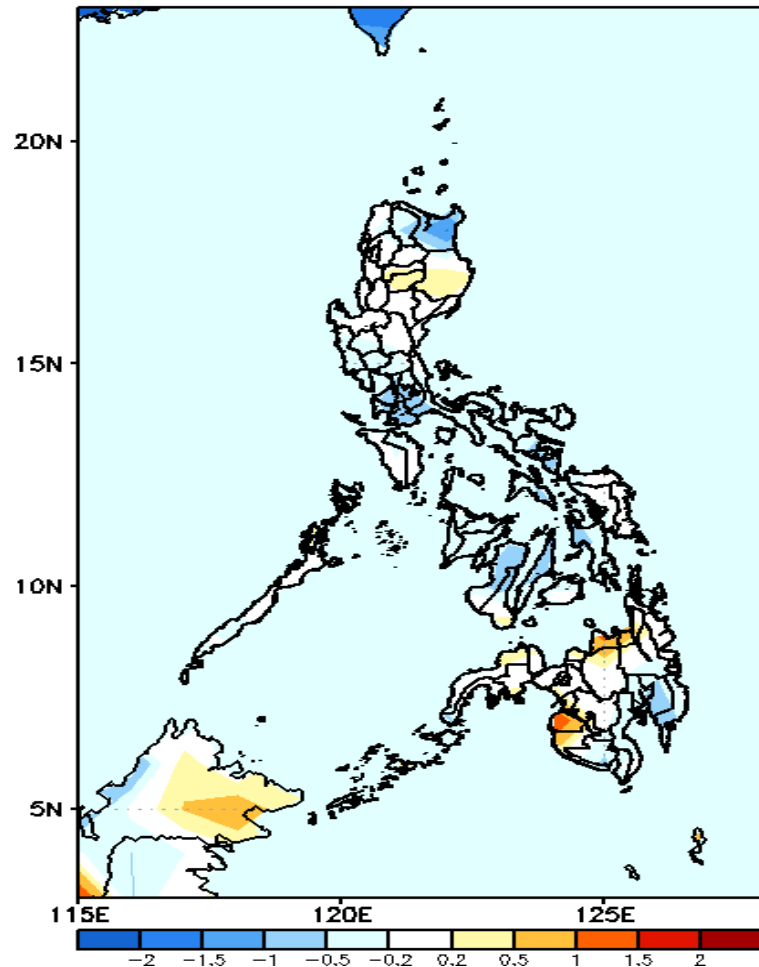
GEFS Week-2 Exceedance Prob. > 200mm  
Valid: 20211028 - 20211103



Less probability of rainfall to exceed 200mm in most parts of the country is expected during the forecast period.

# GEFS Week-1 & 2 Forecasts: T2m Anomaly

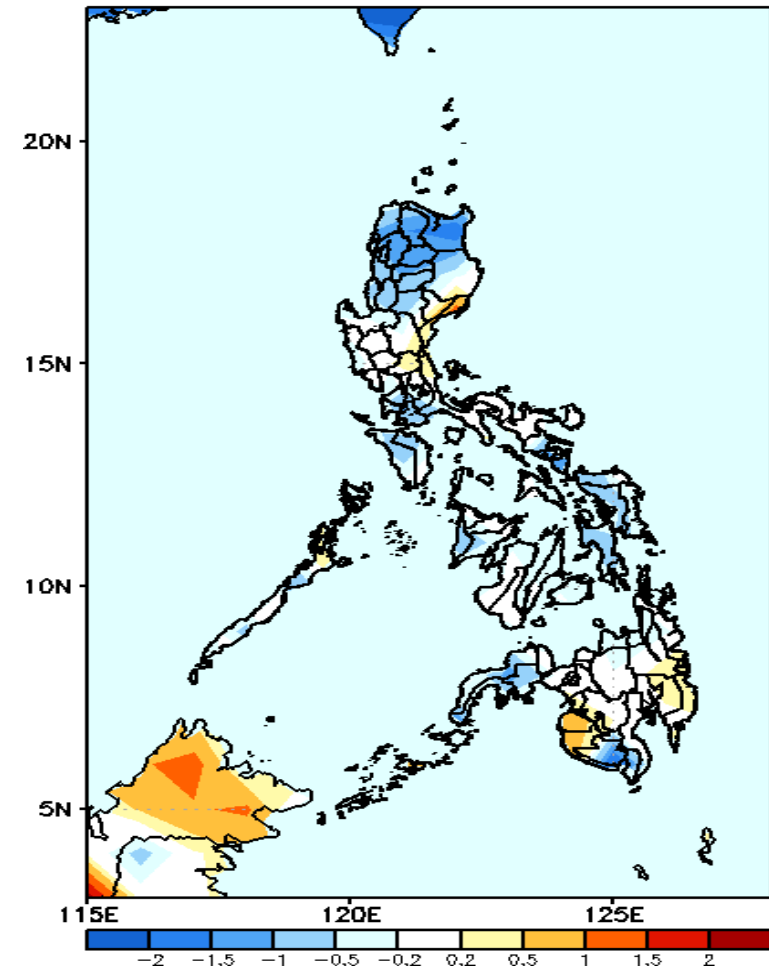
GEFS Week-1 T2m Anomaly  
Valid: 20211021 - 20211027



## 2m Temperature Week 1: Oct 21-27 2021

Generally average surface air temperature will likely experience in most parts of the country during the forecast period.

GEFS Week-2 T2m Anomaly  
Valid: 20211028 - 20211103



## 2m Temperature Week 2: Oct 28-Nov 03, 2021

Average to slightly cooler than average surface air temperature will likely experience in most parts of the country during the forecast period.