



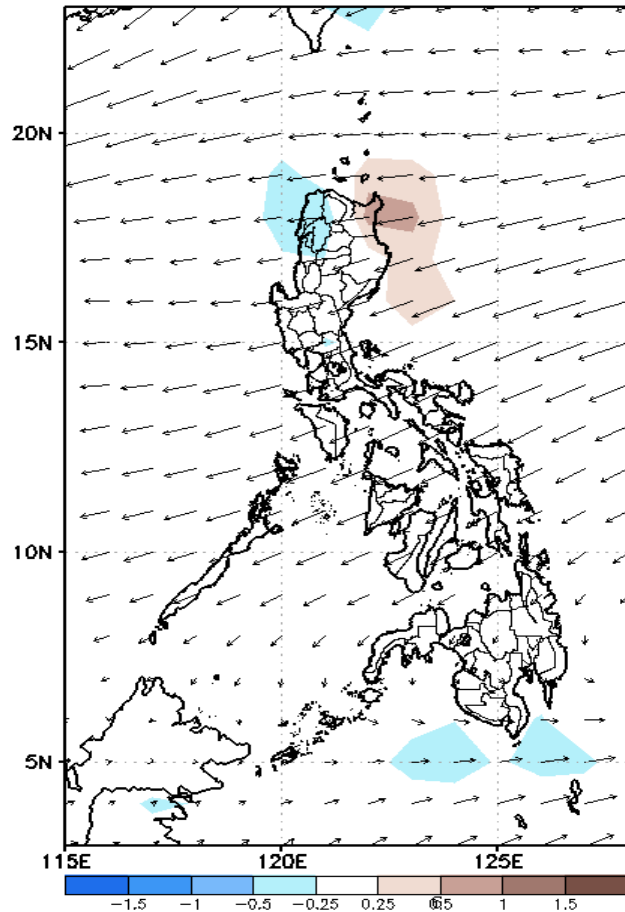
Week 1 & Week 2 Forecast for the Philippines using GEFS Model



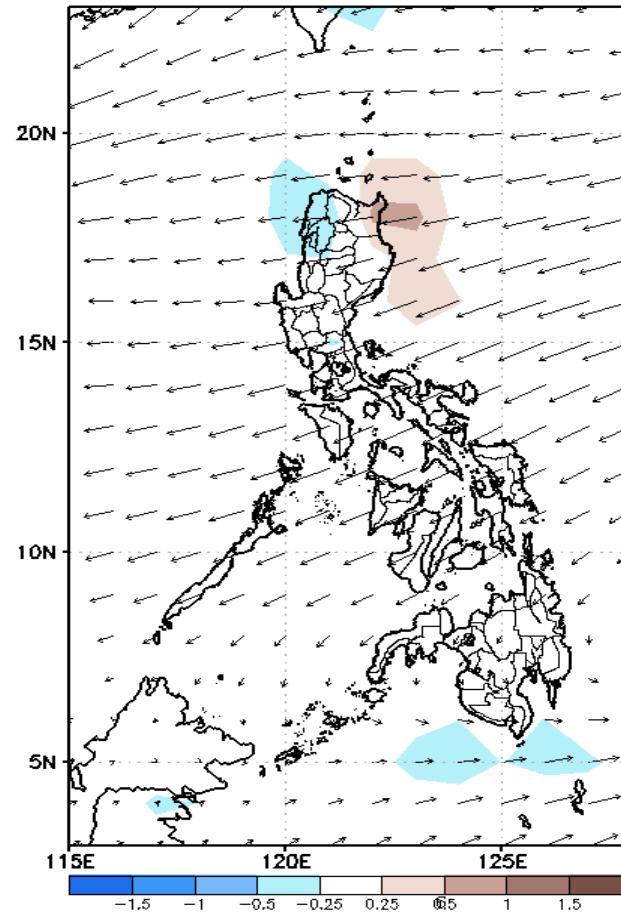
GEFS Week-1 Forecasts: Wind Anomaly Forecast

Week 1: Oct 21-27, 2022

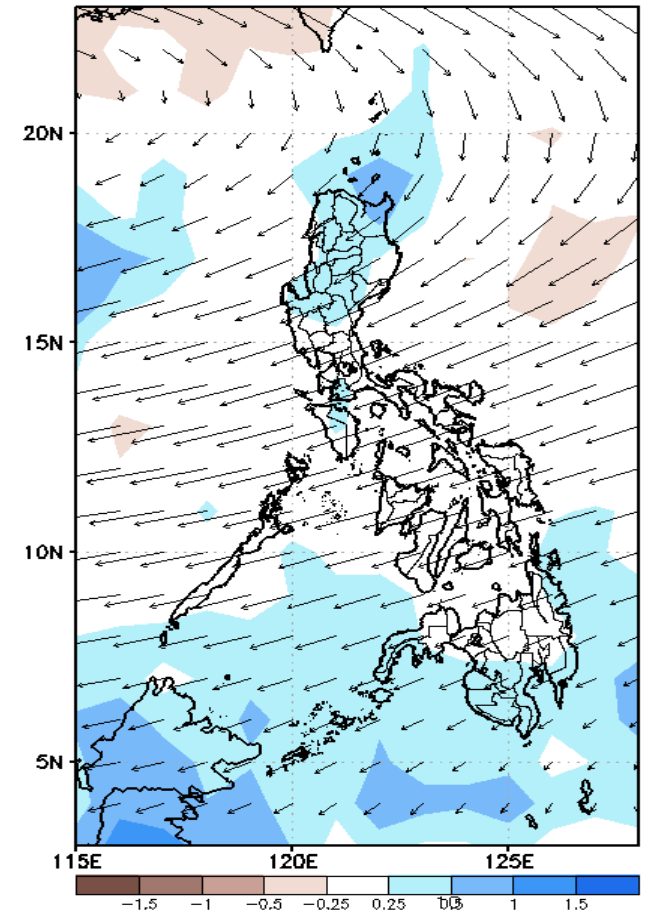
GEFS Week-1 850-hPa Divergence and Wind Anom
Valid: 20221021 - 20221027



GEFS Week-1 700-hPa Divergence and Wind Anom
Valid: 20221021 - 20221027



GEFS Week-1 200-hPa Divergence and Wind Anom
Valid: 20221021 - 20221027

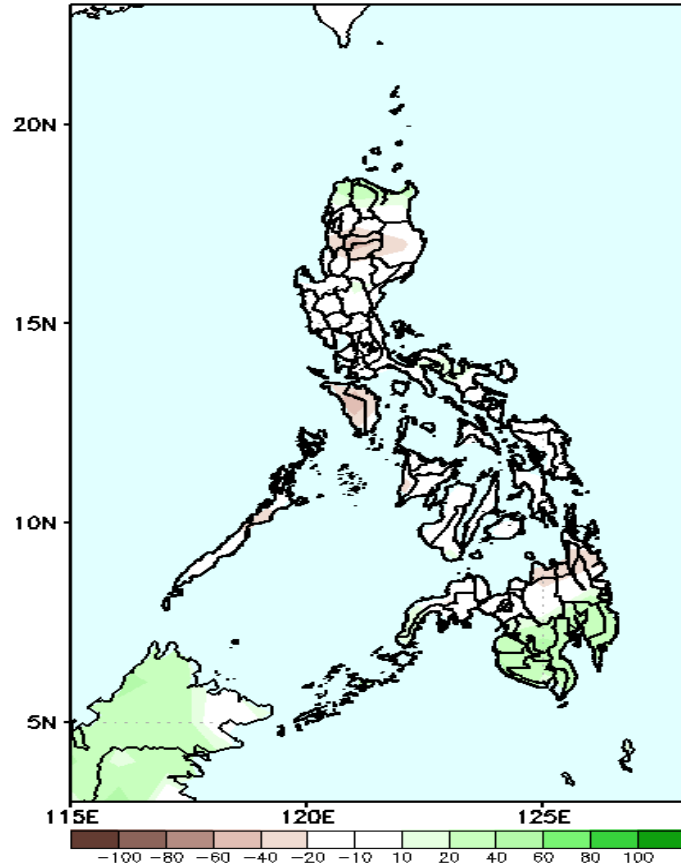


Easterlies is forecasted to affect most parts of the country during the forecast period.

Precipitation Anomaly and Exceedance Probability > 25/50 mm

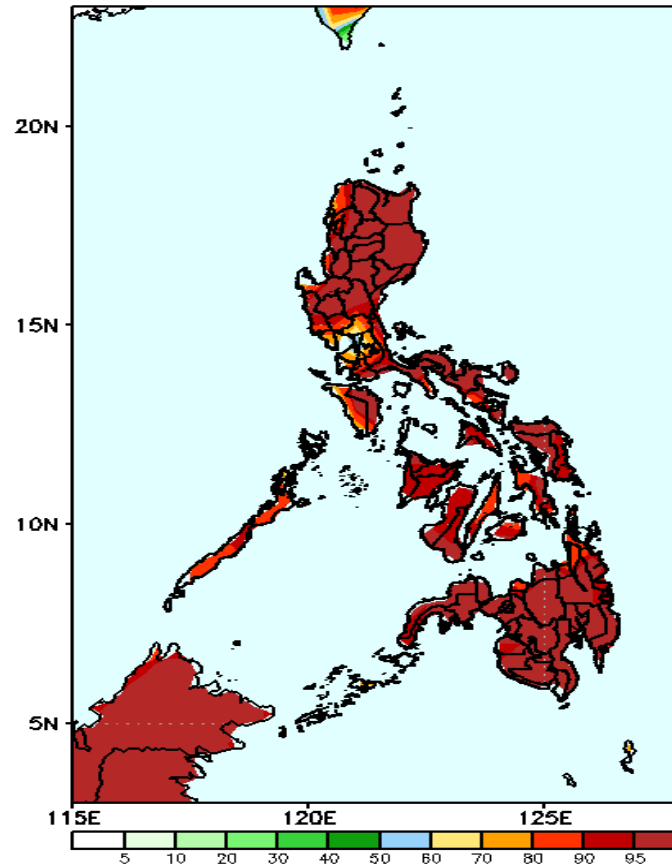
Week 1: Oct 21-27, 2022

GEFS Week-1 Precip Anomaly
Valid: 20221021 - 20221027



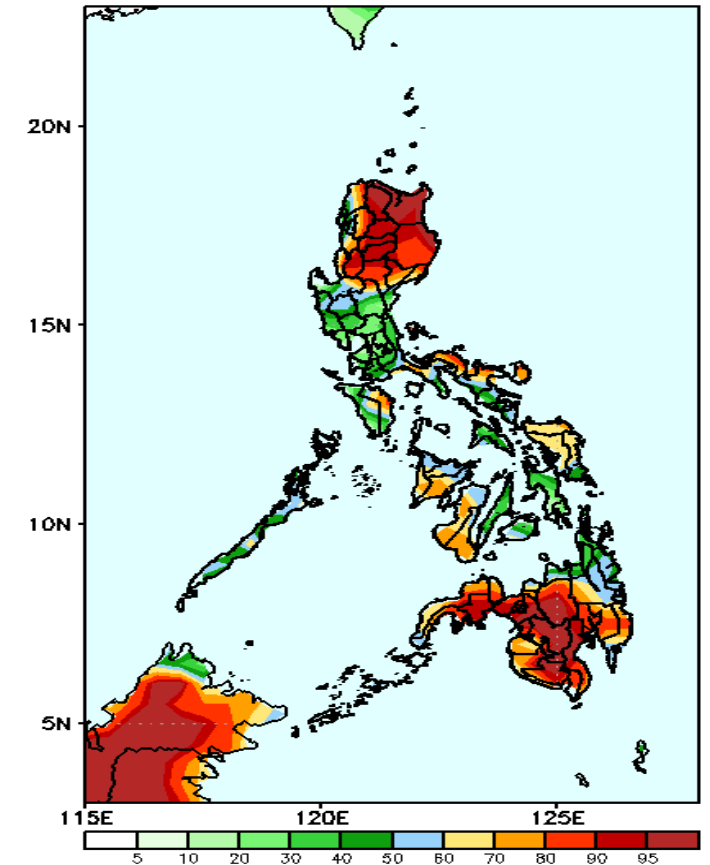
Rainfall deficit of 20-70mm is expected in most parts of Luzon, Visayas and northern Mindanao while 40-70mm increase of rainfall in Ilocos Norte, Apayao and southern Mindanao during the forecast period.

GEFS Week-1 Exceedance Prob. > 25mm
Valid: 20221021 - 20221027



High probability of rainfall to exceed 25mm in most parts of the country during the forecast period.

GEFS Week-1 Exceedance Prob. > 50mm
Valid: 20221021 - 20221027



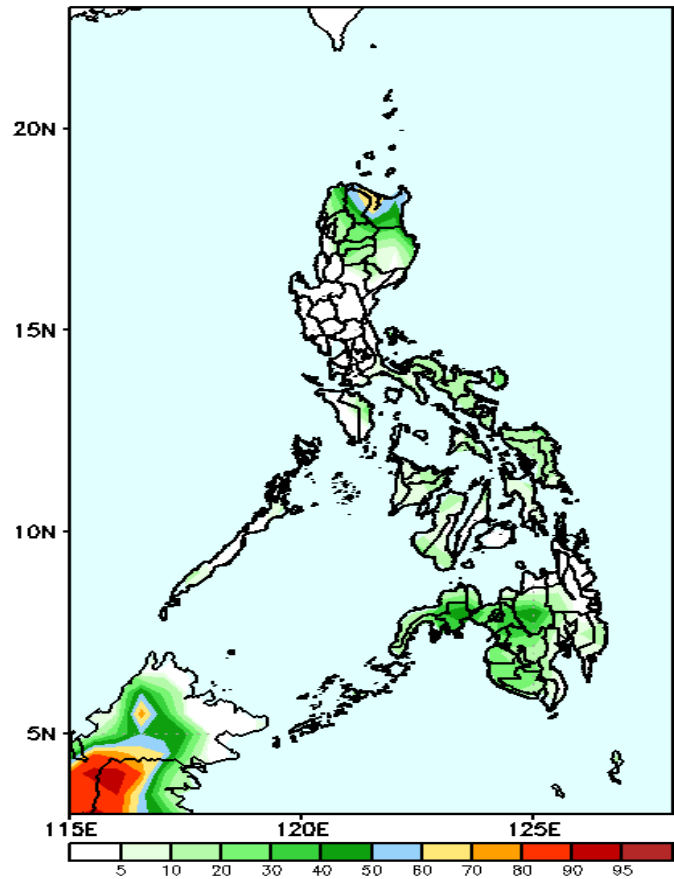
High probability of rainfall to exceed 50mm in most parts of Northern and Central Luzon and Mindanao (except CARAGA) while 40-85% chance for the rest of the country during the forecast period.



Exceedance Probability > 100/150/200 mm

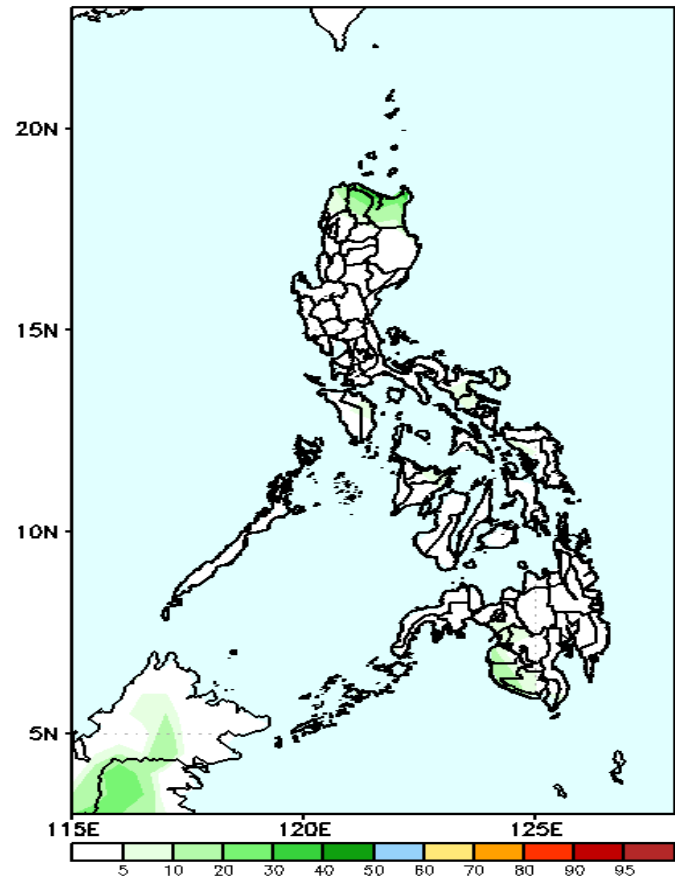
Week 1: Oct 21-27, 2022

GEFS Week-1 Exceedance Prob. > 100mm
Valid: 20221021 – 20221027



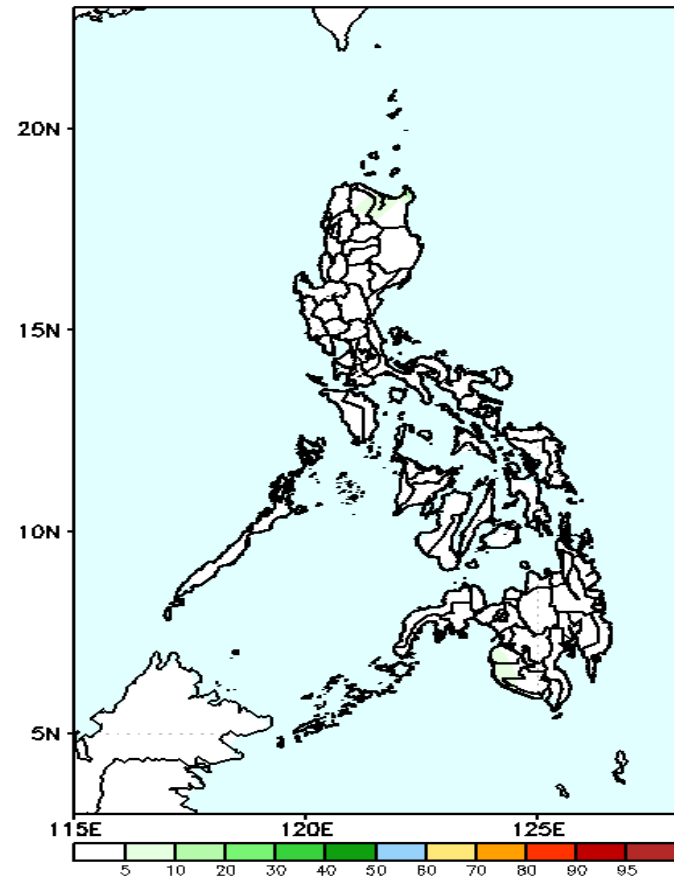
Low probability of rainfall to exceed 100mm in most parts of the country during the forecast period.

GEFS Week-1 Exceedance Prob. > 150mm
Valid: 20221021 – 20221027



Low probability of rainfall to exceed 150mm in most parts of the country during the forecast period.

GEFS Week-1 Exceedance Prob. > 200mm
Valid: 20221021 – 20221027

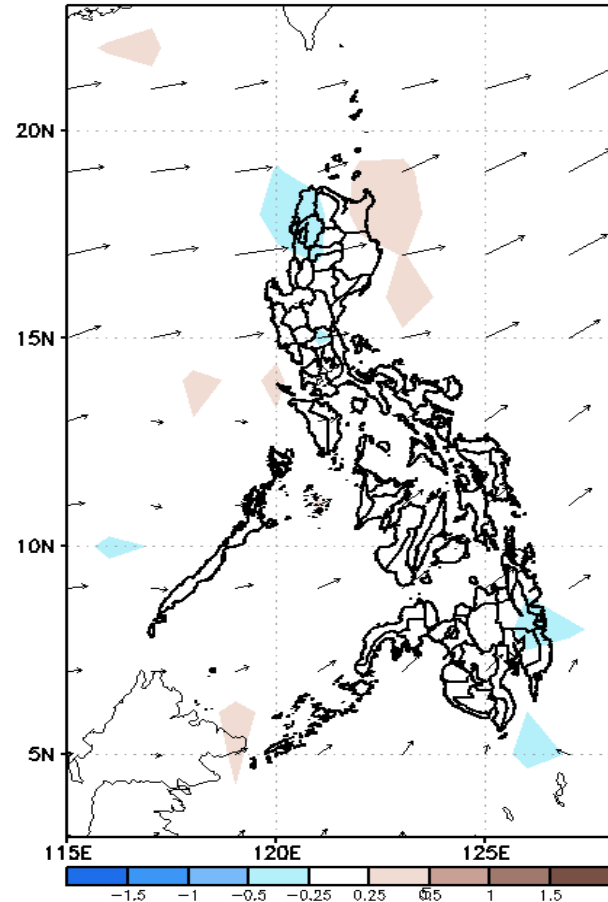


Low probability of rainfall to exceed 200mm in most parts of the country during the forecast period.

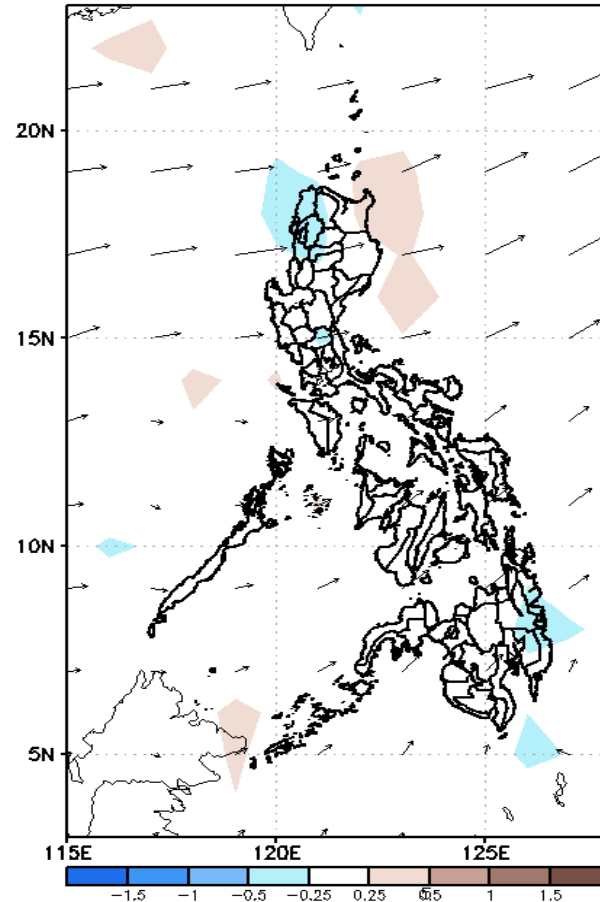
GEFS Week-2 Forecasts: Wind Anomaly Forecast

Week 2: Oct 28- NOV 03, 2022

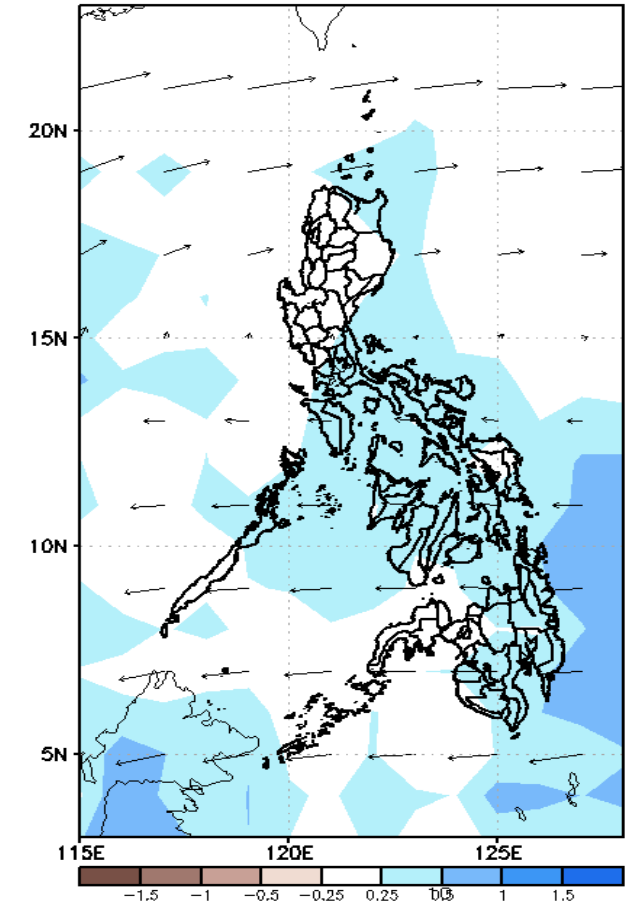
GEFS Week-2 850-hPa Divergence and Wind Anom
Valid: 20221028 - 20221103



GEFS Week-2 700-hPa Divergence and Wind Anomc
Valid: 20221028 - 20221103



GEFS week-2 200-hPa Divergence and Wind Anom
Valid: 20221028 - 20221103

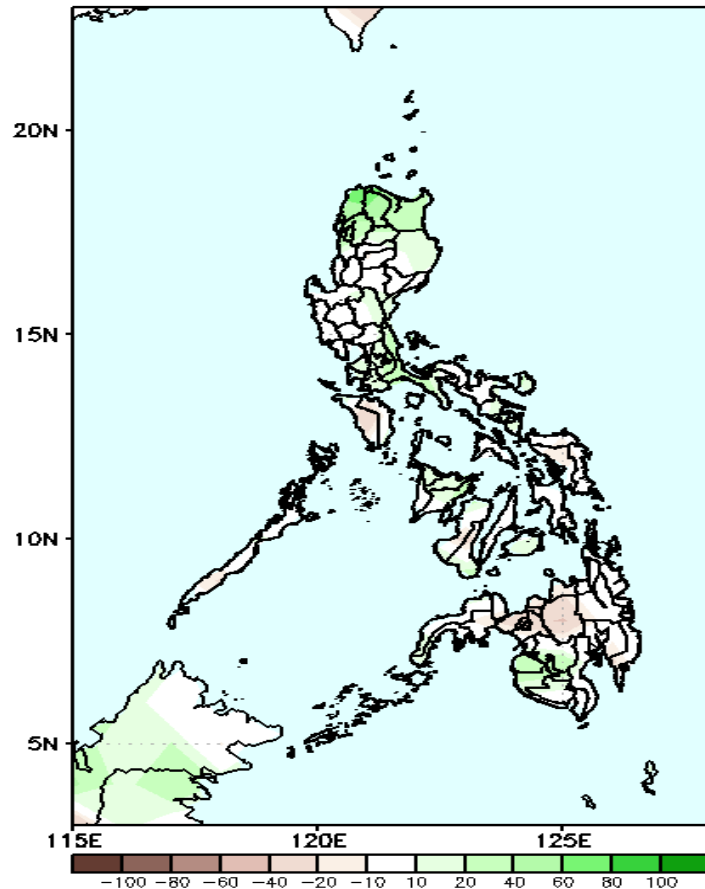


Westerly wind is forecasted to affect most parts of the country during the forecast period.

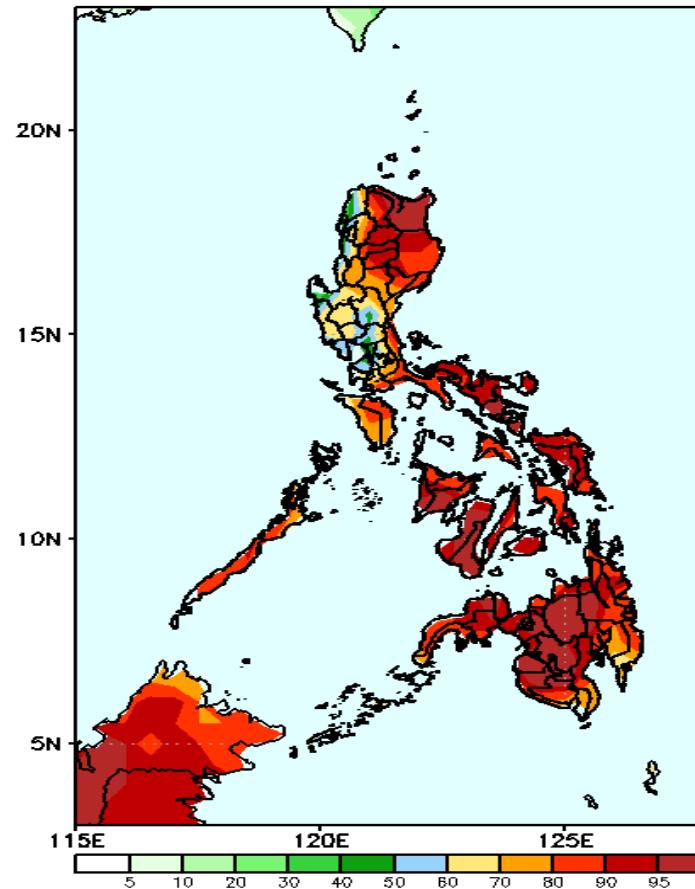
Precipitation Anomaly and Exceedance Probability > 25/50 mm

Week 2: Oct 28- NOV 03, 2022

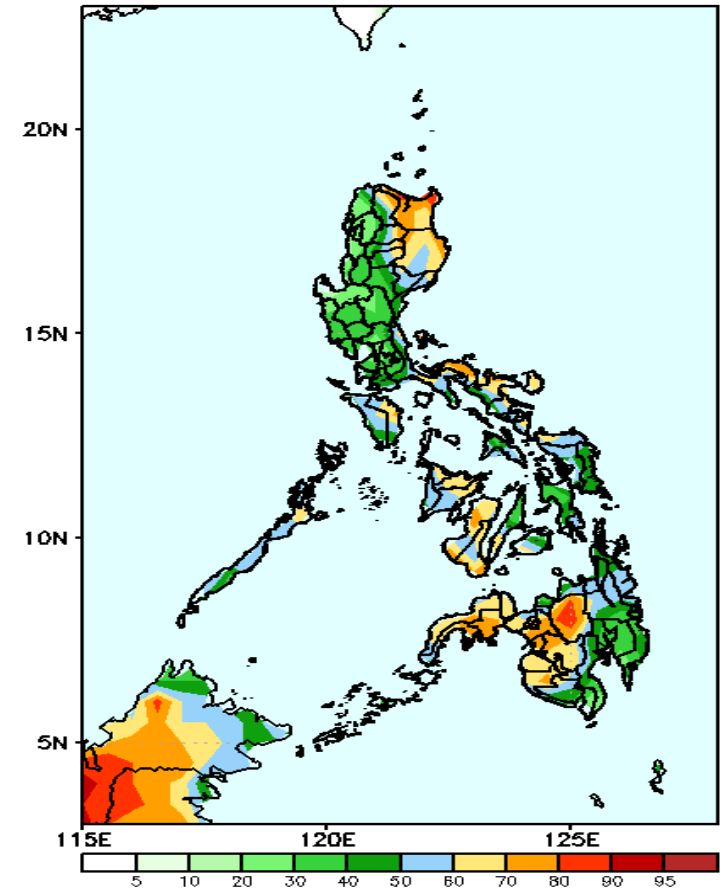
GEFS Week-2 Precip Anomaly
Valid: 20221028 - 20221103



GEFS Week-2 Exceedance Prob. > 25mm
Valid: 20221028 - 20221103



GEFS Week-2 Exceedance Prob. > 50mm
Valid: 20221028 - 20221103



Rainfall deficit of 20-70mm is expected in most parts of Luzon, Visayas and northern Mindanao while 40-70mm increase of rainfall in Ilocos Norte, Apayao and southern Mindanao during the forecast period .

High probability of rainfall to exceed 25mm in most parts of the country during the forecast period.

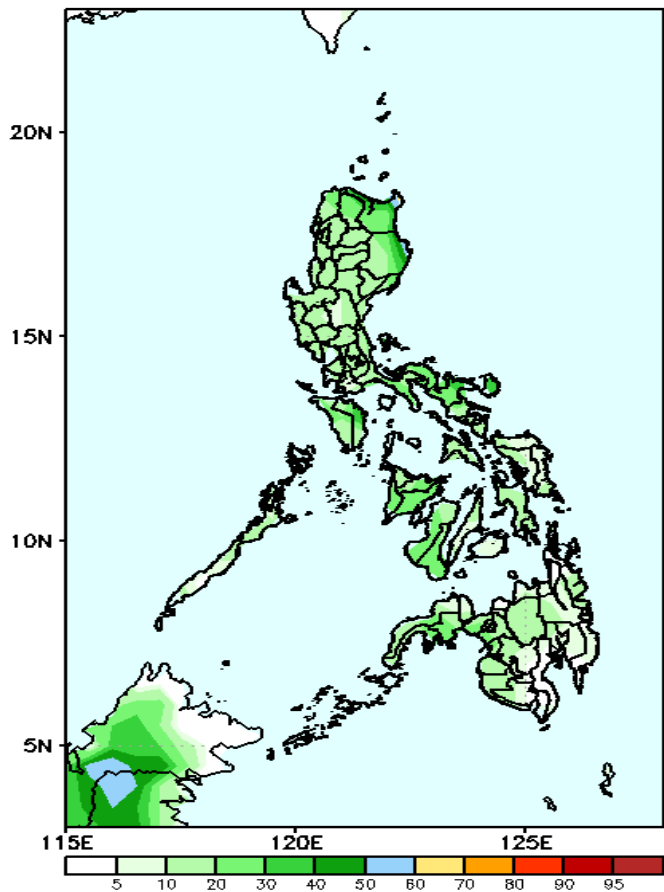
50-85% probability of rainfall to exceed 50mm in most parts of the country during the forecast period.



Exceedance Probability > 100/150/200 mm

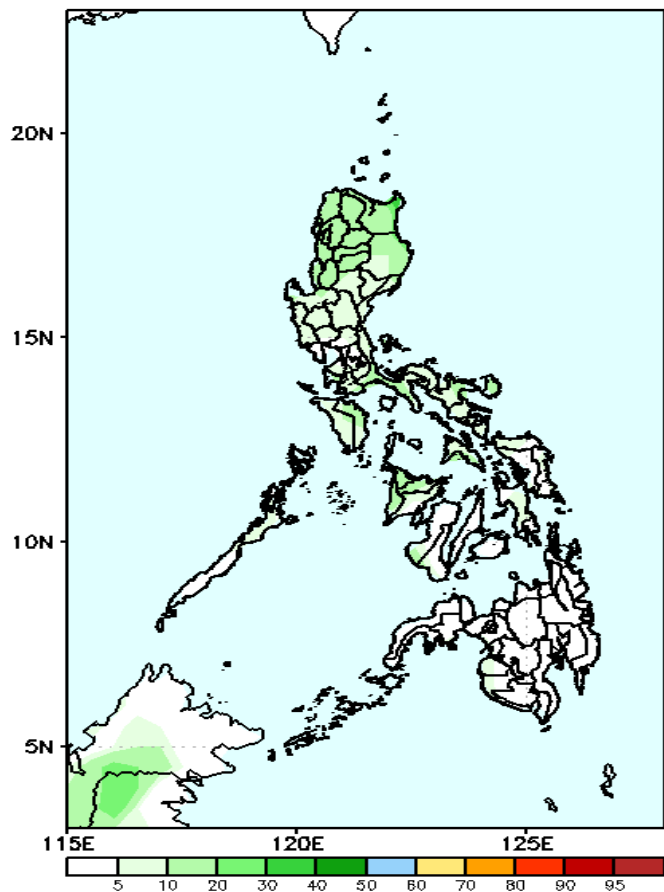
Week 2: Oct 28- NOV 03, 2022

GEFS Week-2 Exceedance Prob. > 100mm
Valid: 20221028 – 20221103



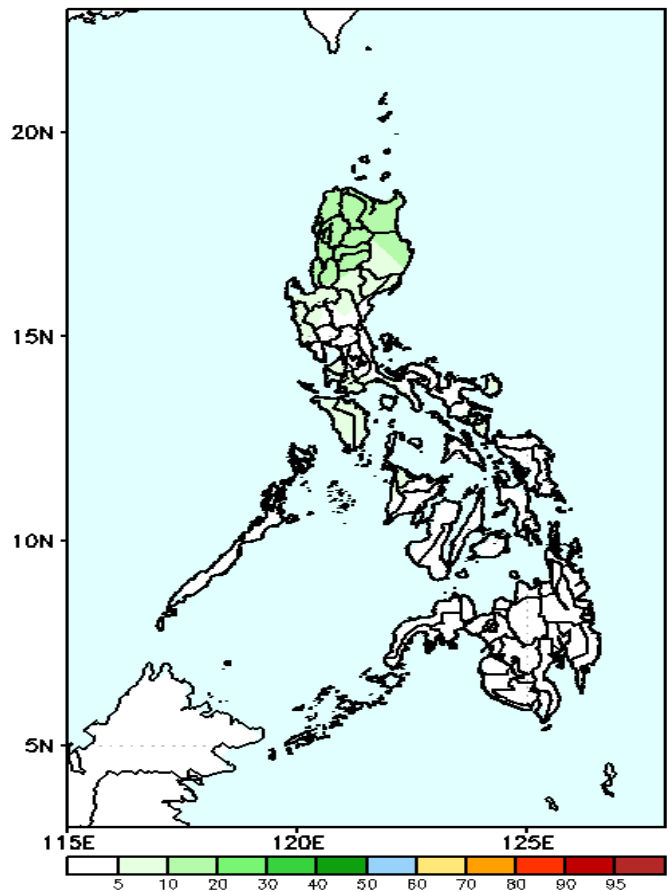
Low probability of rainfall to exceed 100mm in most parts of the country during the forecast period.

GEFS Week-2 Exceedance Prob. > 150mm
Valid: 20221028 – 20221103



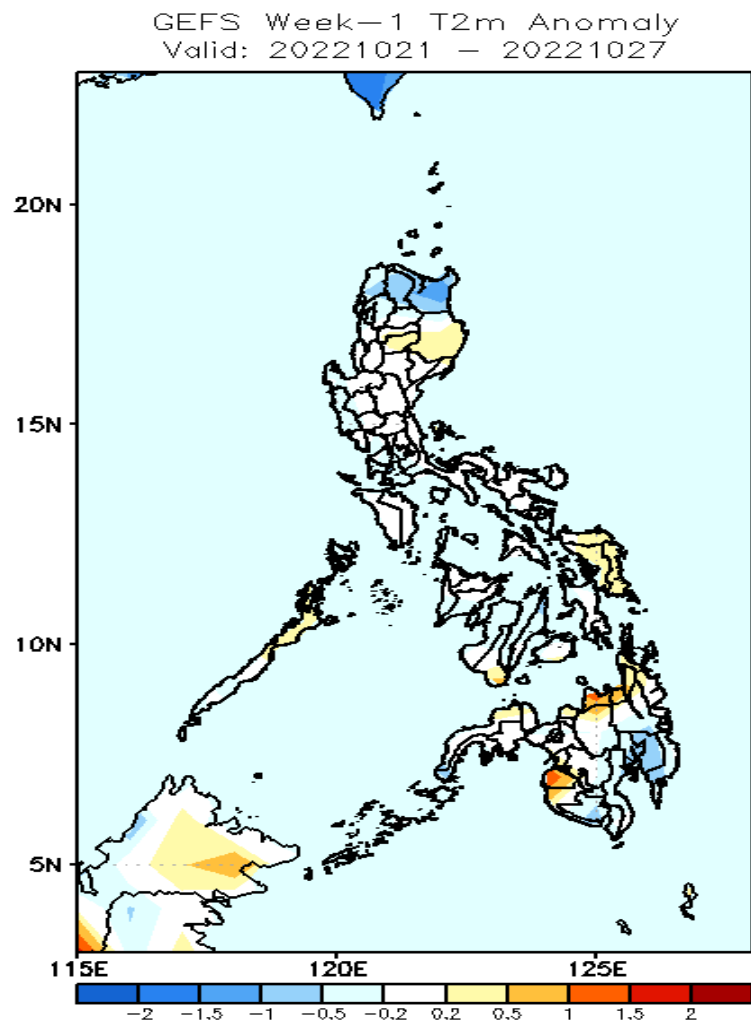
Low probability of rainfall to exceed 150mm in most parts of the country during the forecast period.

GEFS Week-2 Exceedance Prob. > 200mm
Valid: 20221028 – 20221103



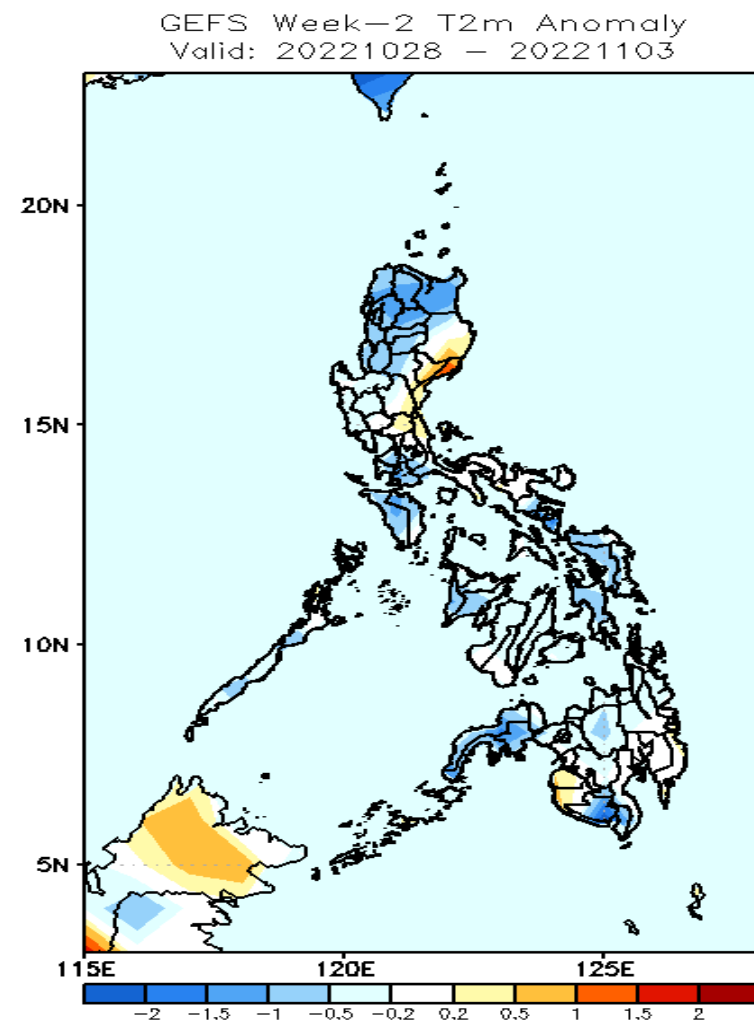
Low probability of rainfall to exceed 200mm in most parts of the country during the forecast period.

GEFS Week-1 & 2 Forecasts: T2m Anomaly



2m Temperature Week 1: Oct 21-27, 2022

Near to slightly warmer than average surface air temperature will likely experience in most parts of the country except in Ilocos Norte, Apayao, Cagayan and Davao Region (slightly cooler to cooler), Maguindanao and Misamis Oriental (warmer) during the forecast period.



2m Temperature Week 2: Oct 28- NOV 03, 2022

Near to cooler than average surface air temperature will likely experience in most parts of the country except in some areas in eastern Luzon, Maguindanao and Sultan Kudarat where slightly warmer to warmer than average surface air temperature is expected during the forecast period.