



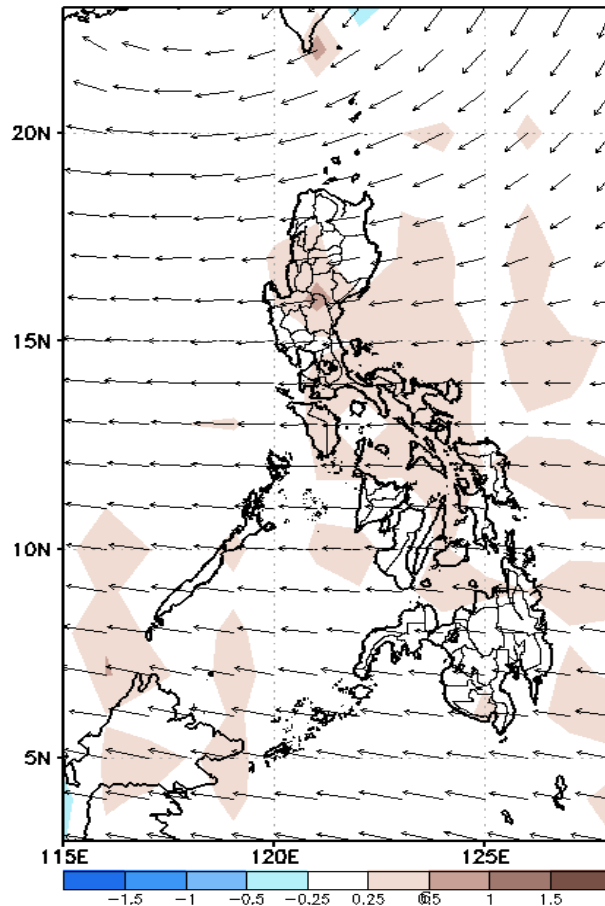
Week 1 & Week 2 Forecast for the Philippines using GEFS Model



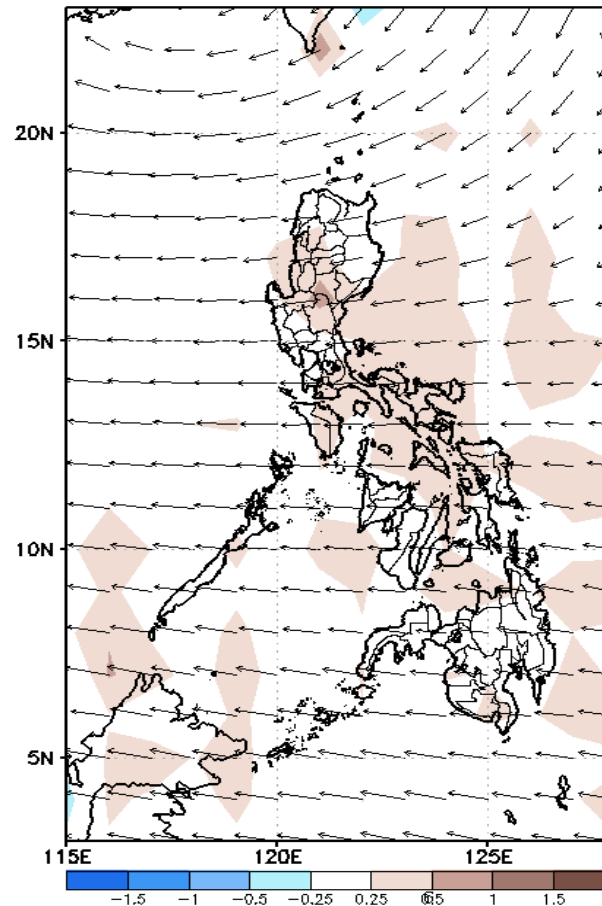
GEFS Week-1 Forecasts: Wind Anomaly Forecast

Week 1: Jul 22 - Jul 28, 2022

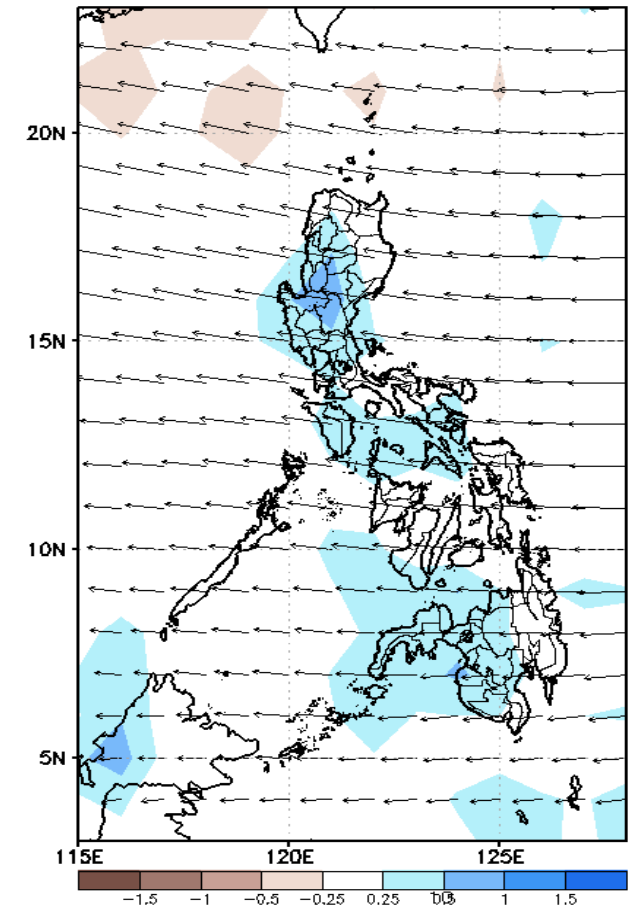
GEFS Week-1 850-hPa Divergence and Wind Anom
Valid: 20220722 - 20220728



GEFS Week-1 700-hPa Divergence and Wind Anom
Valid: 20220722 - 20220728



GEFS Week-1 200-hPa Divergence and Wind Anom
Valid: 20220722 - 20220728

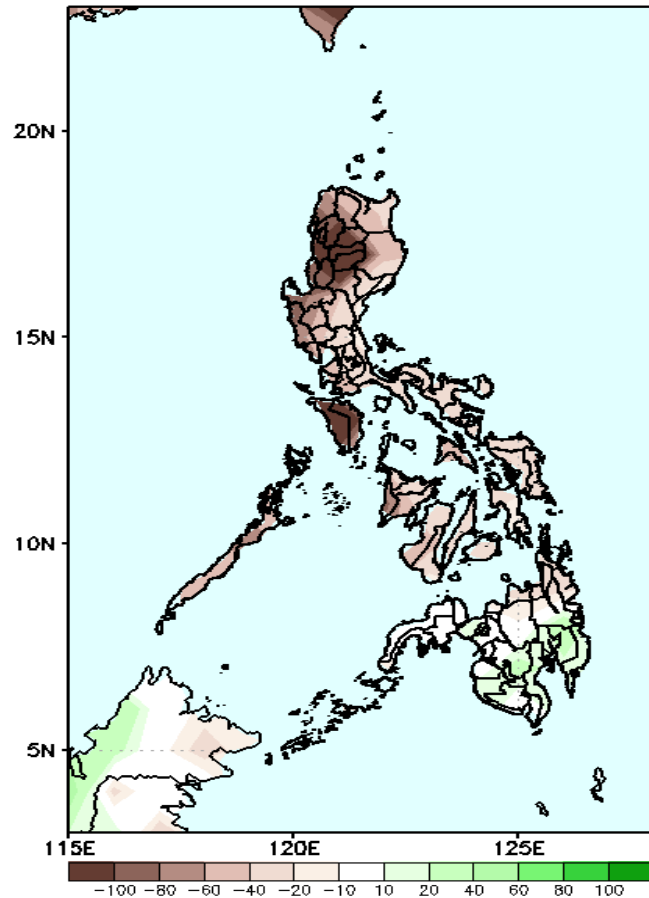


Easterlies affecting most parts of the country during the forecast period.

Precipitation Anomaly and Exceedance Probability > 25/50 mm

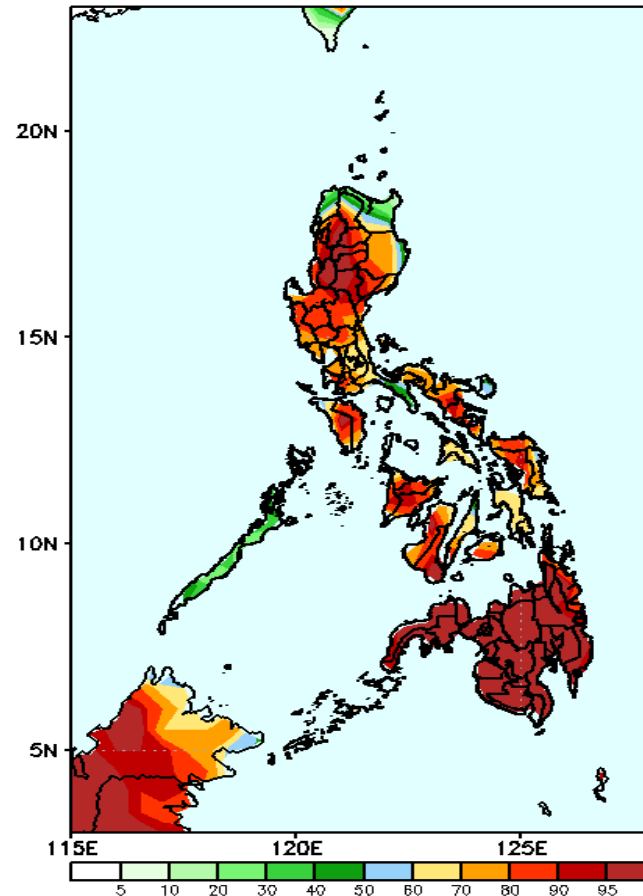
Week 1: Jul 22 - Jul 28, 2022

GEFS Week-1 Precip Anomaly
Valid: 20220722 - 20220728



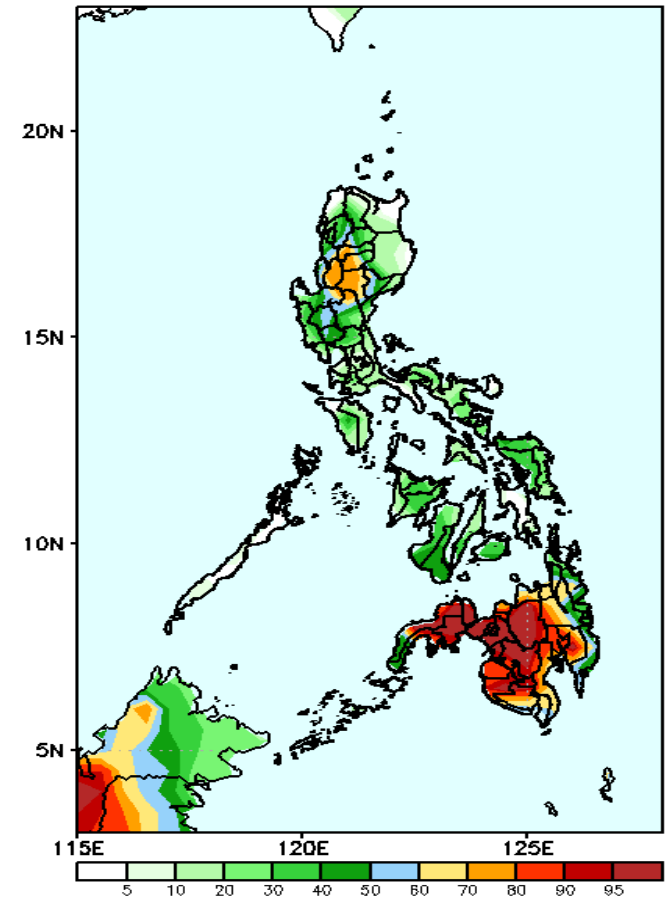
Rainfall deficit of more than 100mm is expected in Ilocos & Cordillera Region & Mindoro, 40-80mm for the rest of the country except in southern Mindanao (20-40mm increase of rainfall) during the forecast period.

GEFS Week-1 Exceedance Prob. > 25mm
Valid: 20220722 - 20220728



High probability of rainfall to exceed 25mm in most parts of the country except in Ilocos Norte, Apayao, Cagayan and Palawan during the forecast period.

GEFS Week-1 Exceedance Prob. > 50mm
Valid: 20220722 - 20220728

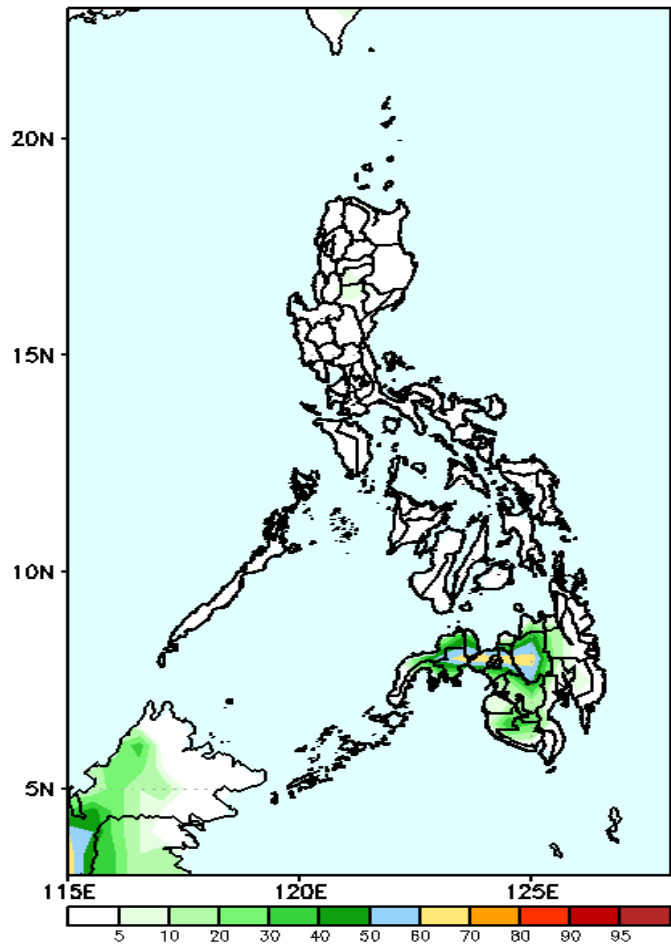


High probability of rainfall to exceed 50mm in most parts of Mindanao (except CARAGA Region and Davao Oriental, 50-80% chance in Luzon and less probability in Visayas during the forecast period.

Exceedance Probability > 100/150/200 mm

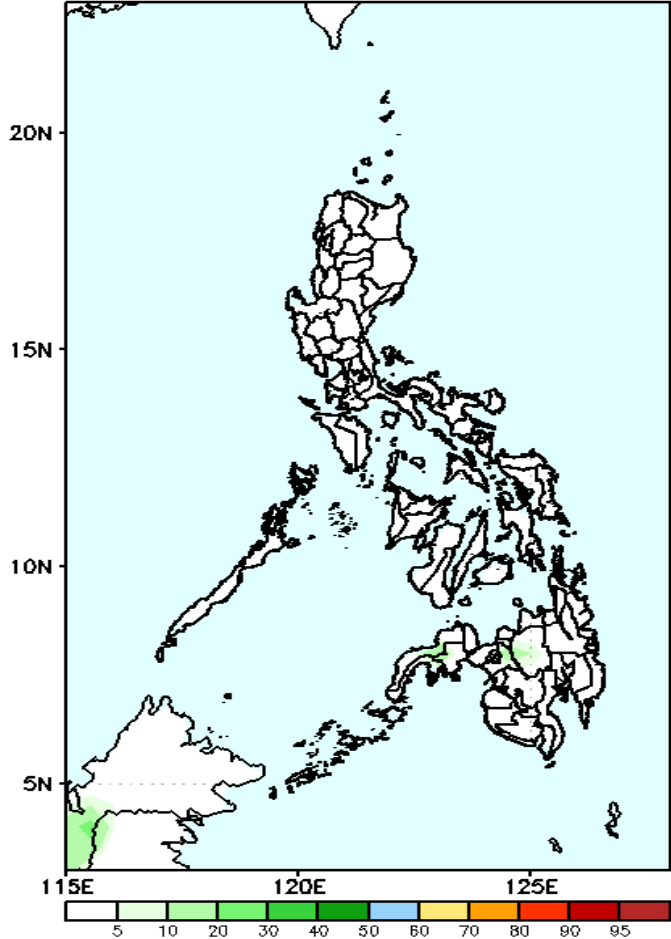
Week 1: Jul 22 - Jul 28, 2022

GEFS Week-1 Exceedance Prob. > 100mm
Valid: 20220722 - 20220728



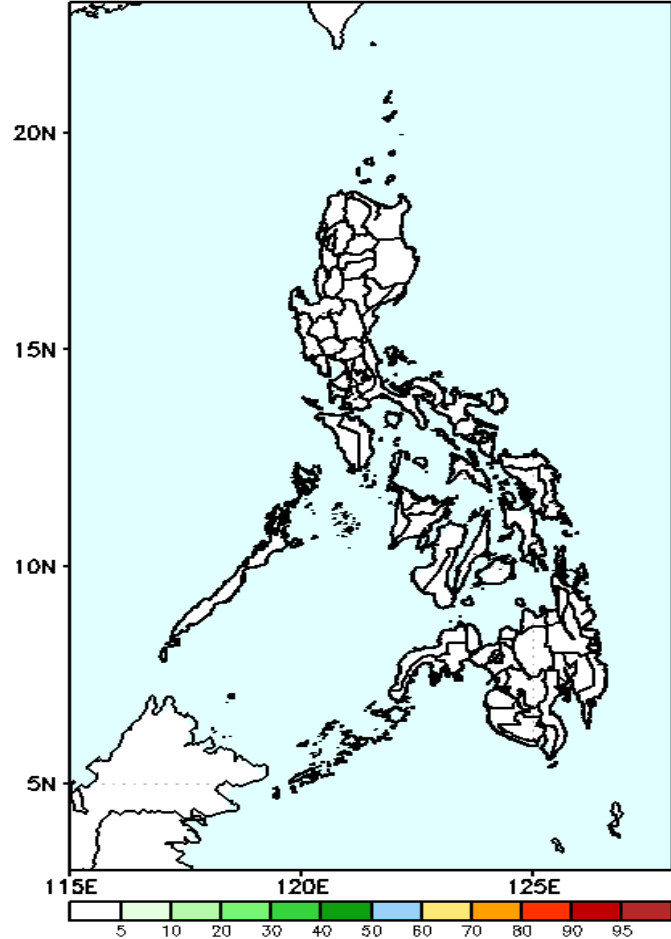
Low probability of rainfall to exceed 100mm in most parts of the country during the forecast period.

GEFS Week-1 Exceedance Prob. > 150mm
Valid: 20220722 - 20220728



Low probability of rainfall to exceed 150mm in most parts of the country during the forecast period.

GEFS Week-1 Exceedance Prob. > 200mm
Valid: 20220722 - 20220728

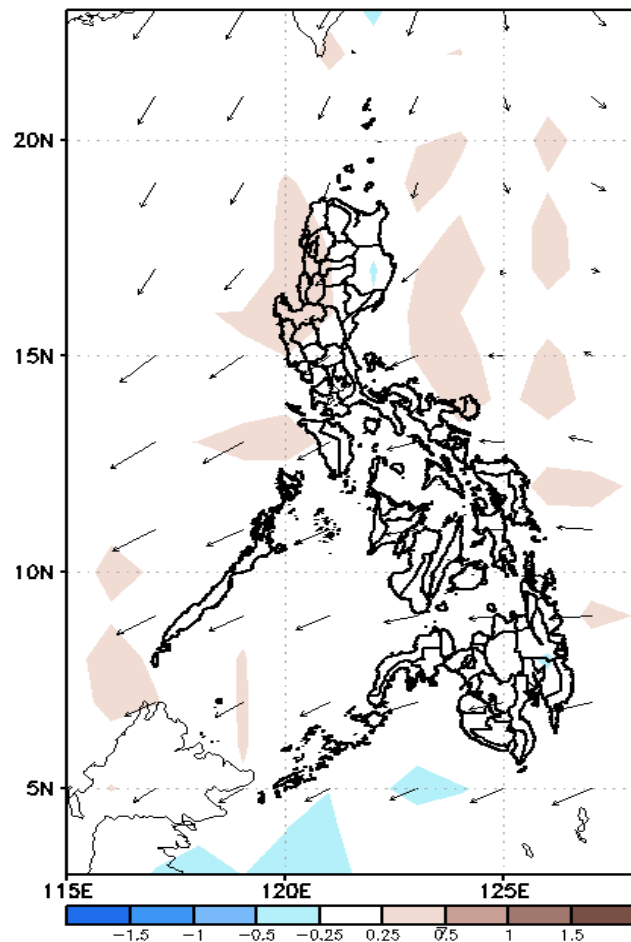


Low probability of rainfall to exceed 200mm in most parts of the country during the forecast period.

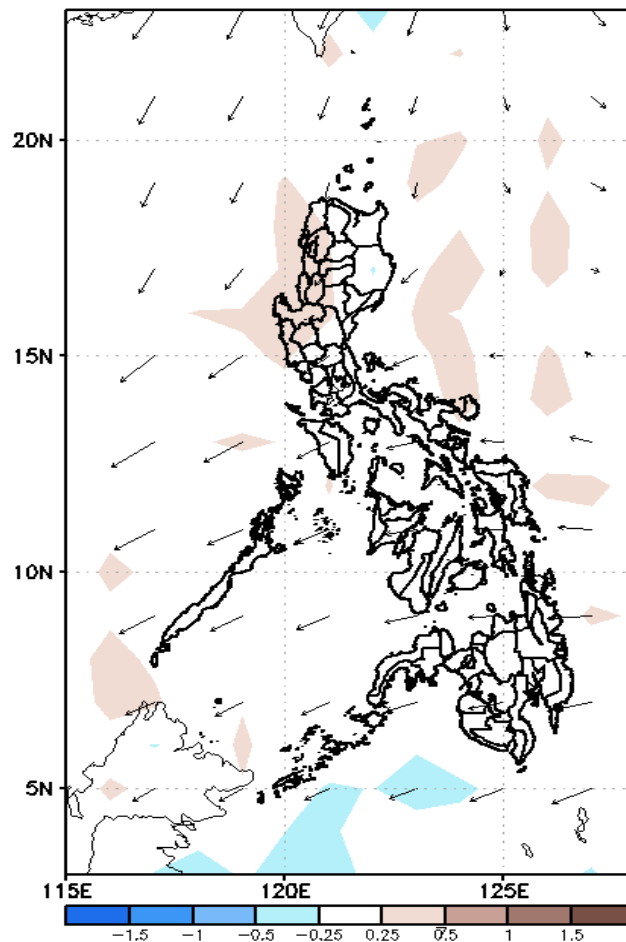
GEFS Week-2 Forecasts: Wind Anomaly Forecast

Week 2: Jul 29– Aug 04, 2022

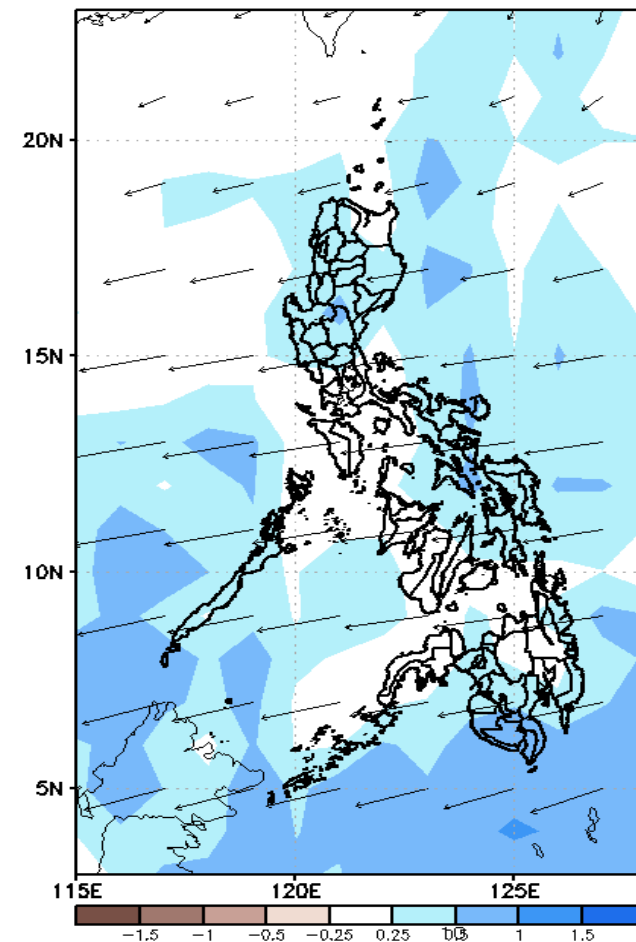
GEFS Week-2 700-hPa Divergence and Wind Anom
Valid: 20220729 – 20220804



GEFS Week-2 850-hPa Divergence and Wind Anom
Valid: 20220729 – 20220804



GEFS week-2 200-hPa Divergence and Wind Ano
Valid: 20220729 – 20220804

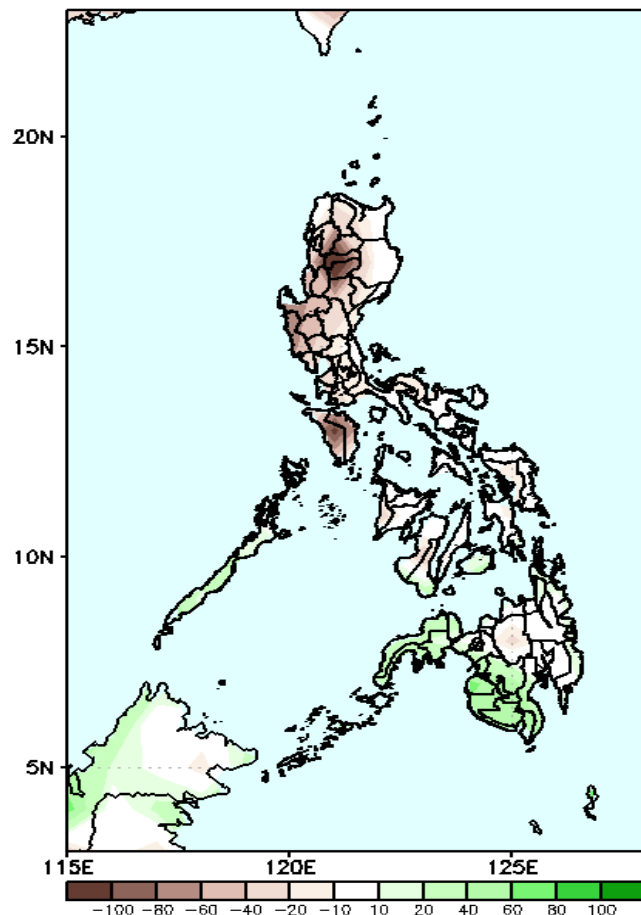


Easterlies affecting most parts of the country during the forecast period.

Precipitation Anomaly and Exceedance Probability > 25/50 mm

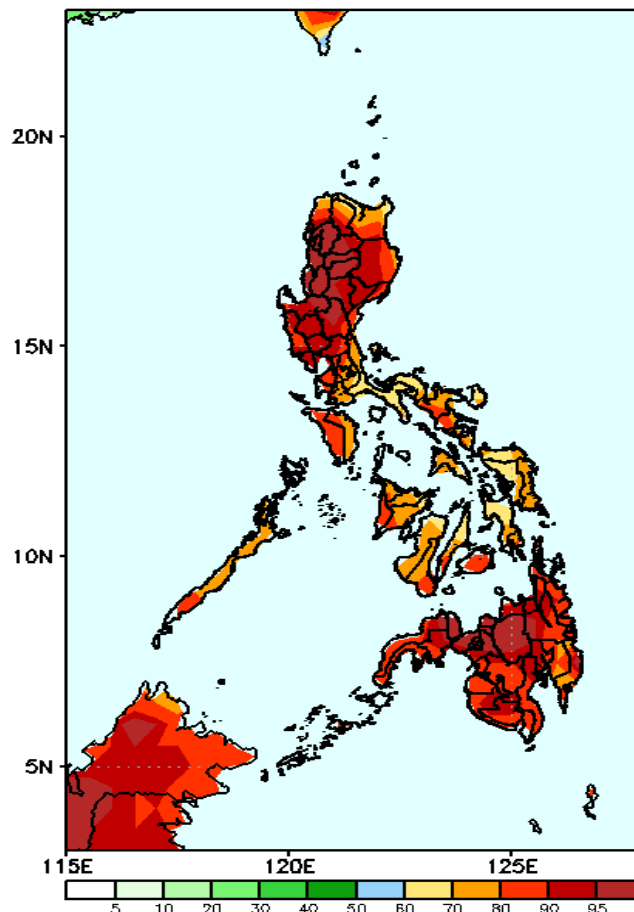
Week 2: Jul 29– Aug 04, 2022

GEFS Week-2 Precip Anomaly
Valid: 20220729 – 20220804



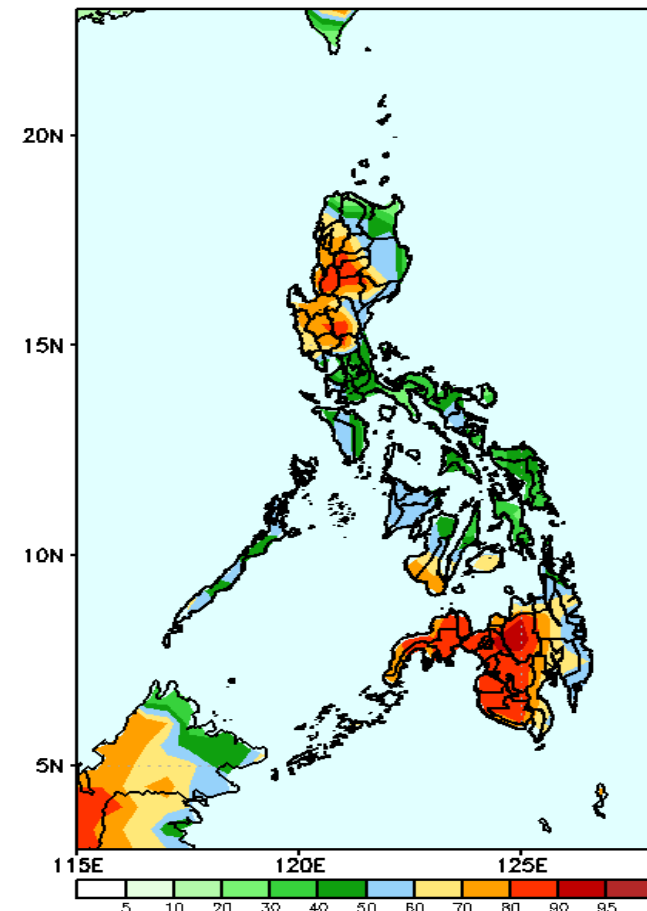
Rainfall deficit of 40-100mm is expected in most parts of Luzon while increase of rainfall of 40-80mm in western Mindanao and Palawan during the forecast period .

GEFS Week-2 Exceedance Prob. > 25mm
Valid: 20220729 – 20220804



High probability of rainfall to exceed 25mm in most parts of the country during the forecast period.

GEFS Week-2 Exceedance Prob. > 50mm
Valid: 20220729 – 20220804

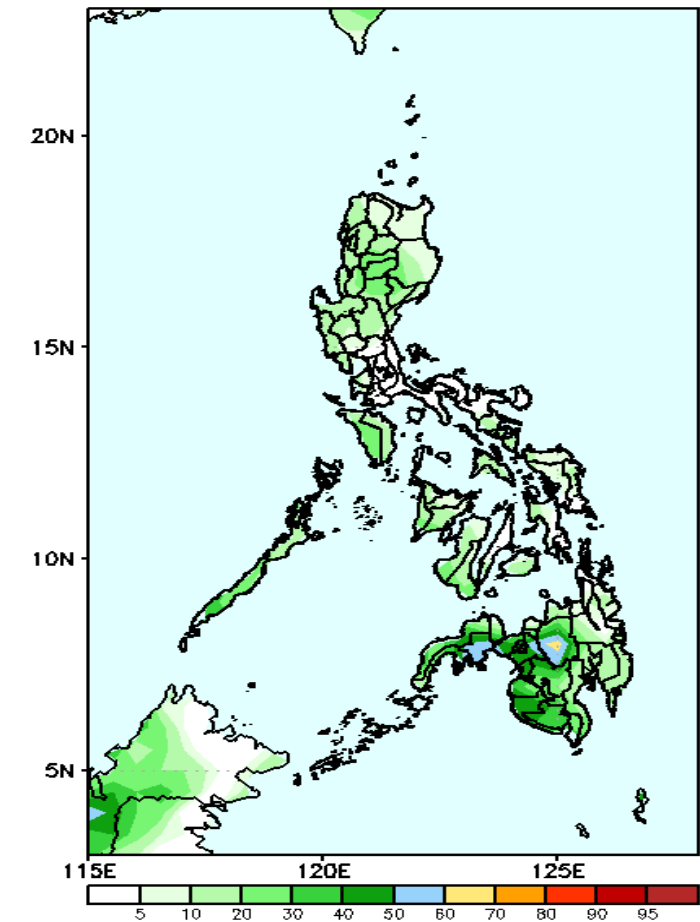


High probability of rainfall to exceed 50mm in most parts of Ilocos and Cordillera Region, Central Luzon, Bohol, western Negros Island and most parts of Mindanao while less likely for the rest of the country during the forecast period..

Exceedance Probability > 100/150/200 mm

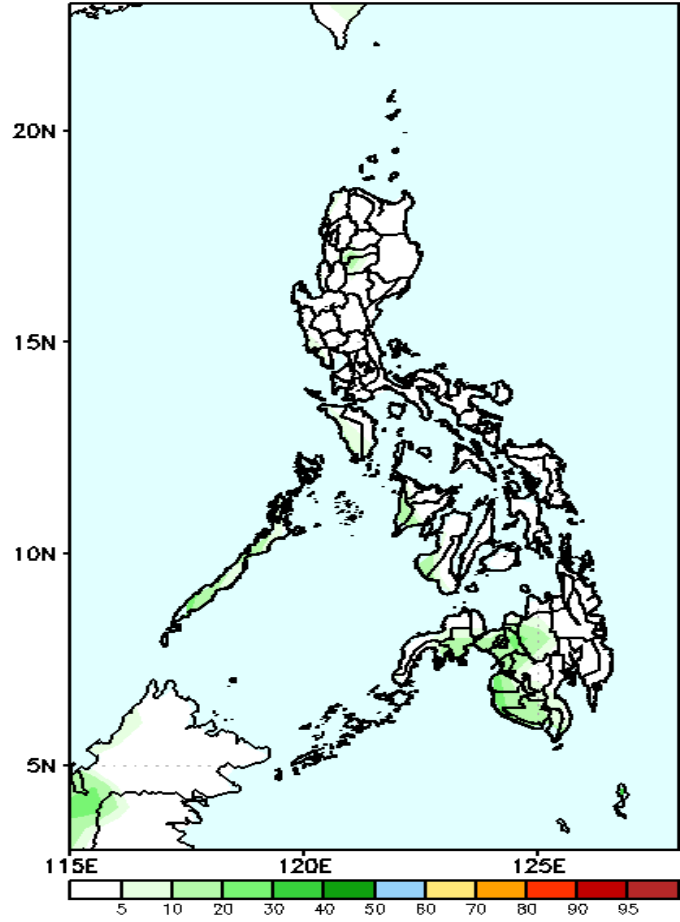
Week 2: Jul 29– Aug 04, 2022

GEFS Week-2 Exceedance Prob. > 100mm
Valid: 20220729 – 20220804



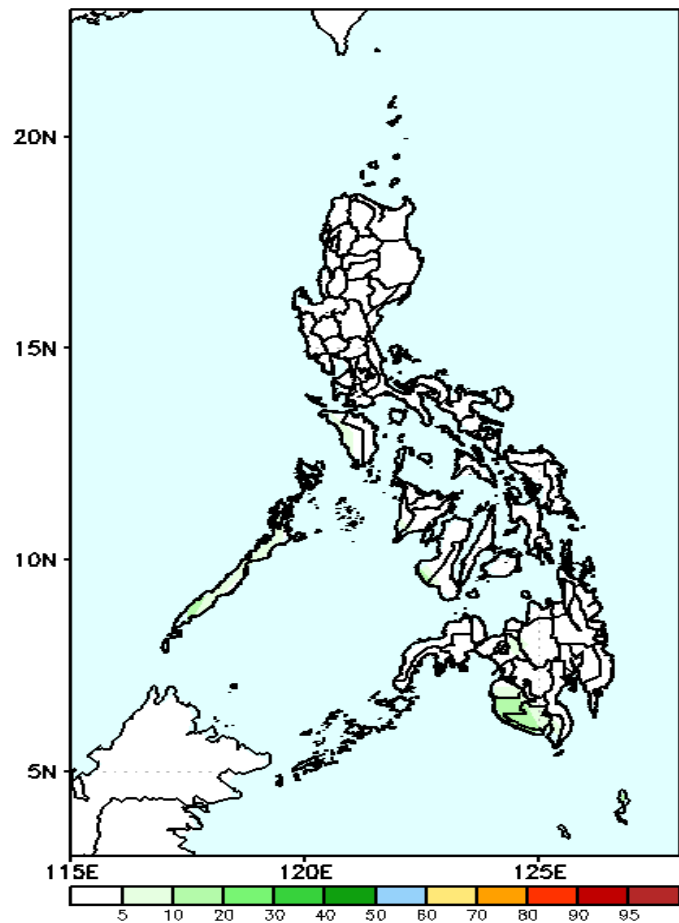
Low probability of rainfall to exceed 100mm in most parts of the country during the forecast period.

GEFS Week-2 Exceedance Prob. > 150mm
Valid: 20220729 – 20220804



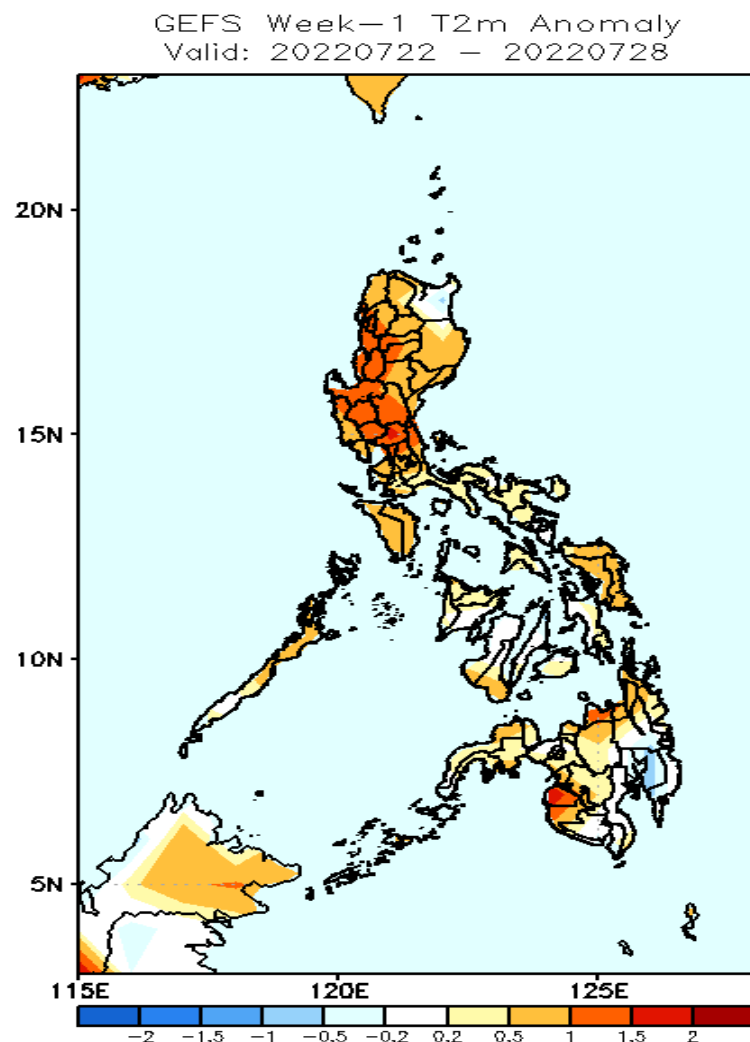
Low probability of rainfall to exceed 150mm in most parts of the country during the forecast period.

GEFS Week-2 Exceedance Prob. > 200mm
Valid: 20220729 – 20220804



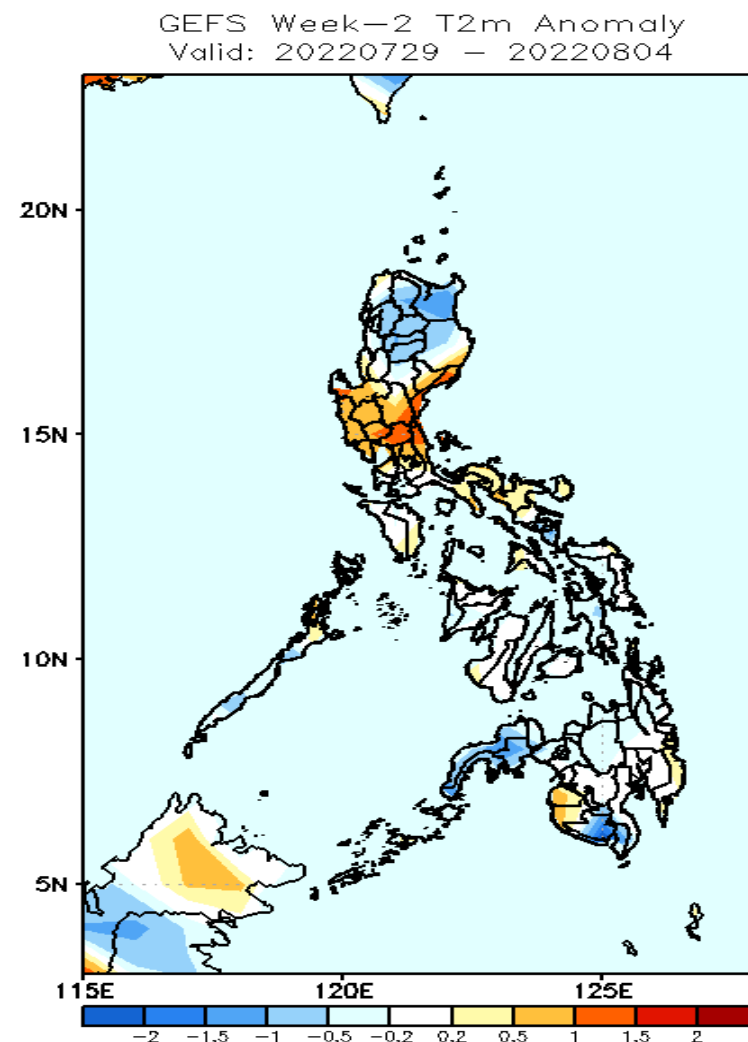
Low probability of rainfall to exceed 200mm in most parts of the country during the forecast period.

GEFS Week-1 & 2 Forecasts: T2m Anomaly



2m Temperature Week 1: Jul 22 - Jul 28, 2022

Slightly warmer to warmer than average surface air temperature will likely experience in most parts of the country during the forecast period.



2m Temperature Week 2: Jul 29- Aug 04, 2022

Slightly cooler to cooler than average surface air temperature will likely experience in northern Luzon, Zamboanga Peninsula and South Cotabato; slightly warmer to warmer than average temperature in Pangasinan and Central Luzon and near average for the rest of the country during the forecast period.