



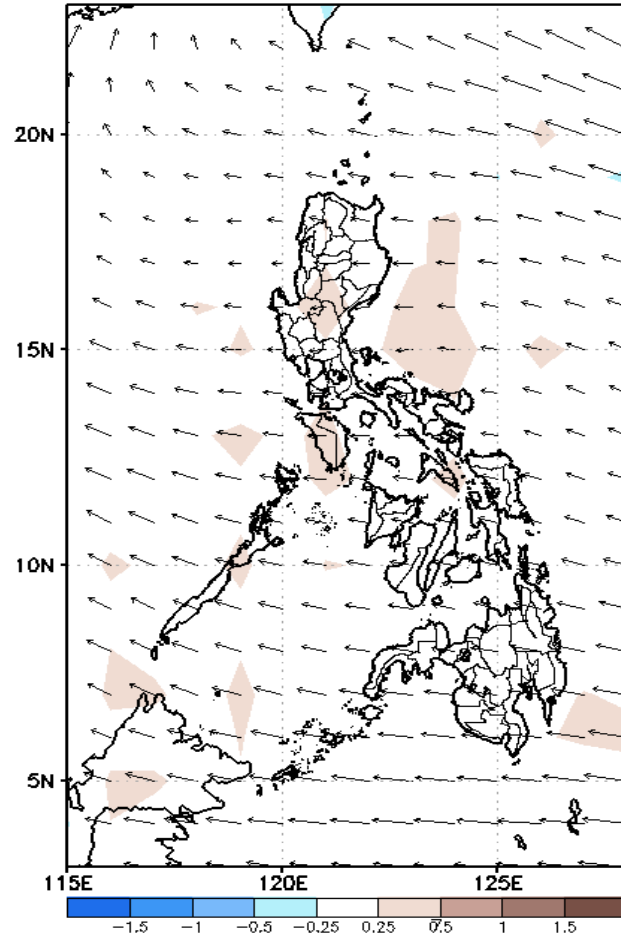
# Week 1 & Week 2 Forecast for the Philippines using GEFS Model



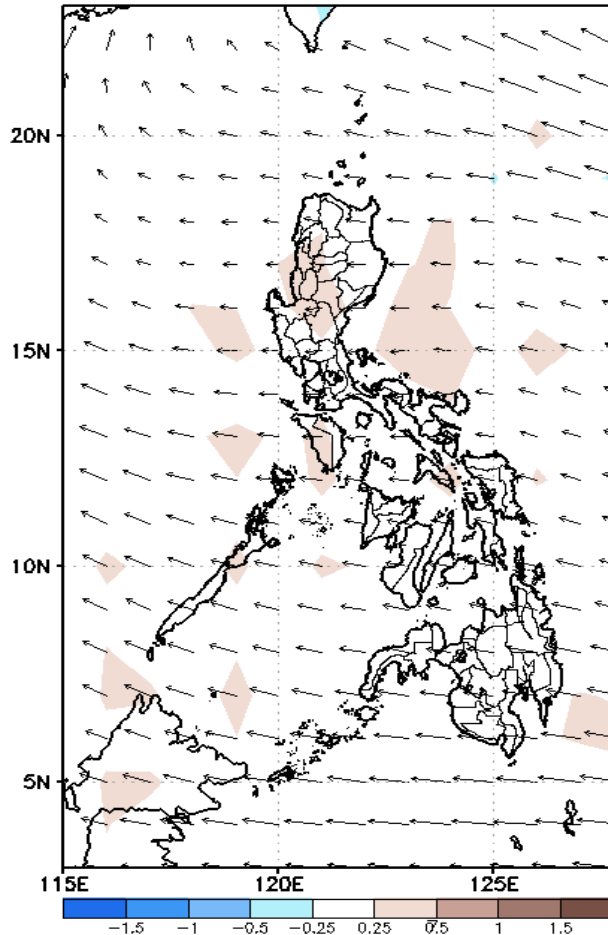
# GEFS Week-1 Forecasts: Wind Anomaly Forecast

Week 1 Jun 22-28, 2022

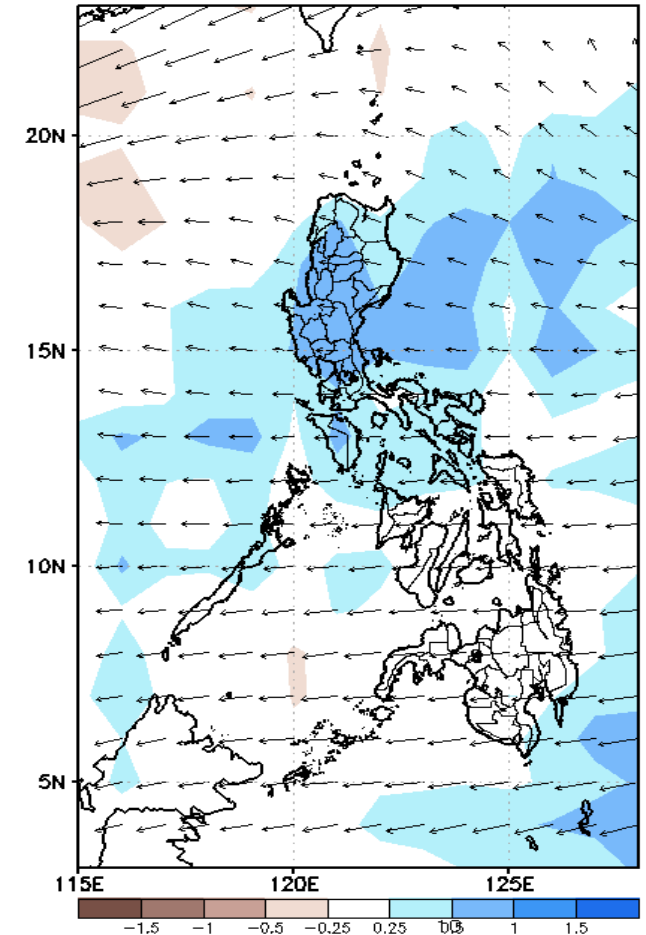
GEFS Week-1 850-hPa Divergence and Wind Anom  
Valid: 20220622 - 20220628



GEFS Week-1 700-hPa Divergence and Wind Anom  
Valid: 20220622 - 20220628



GEFS Week-1 200-hPa Divergence and Wind Anom  
Valid: 20220622 - 20220628

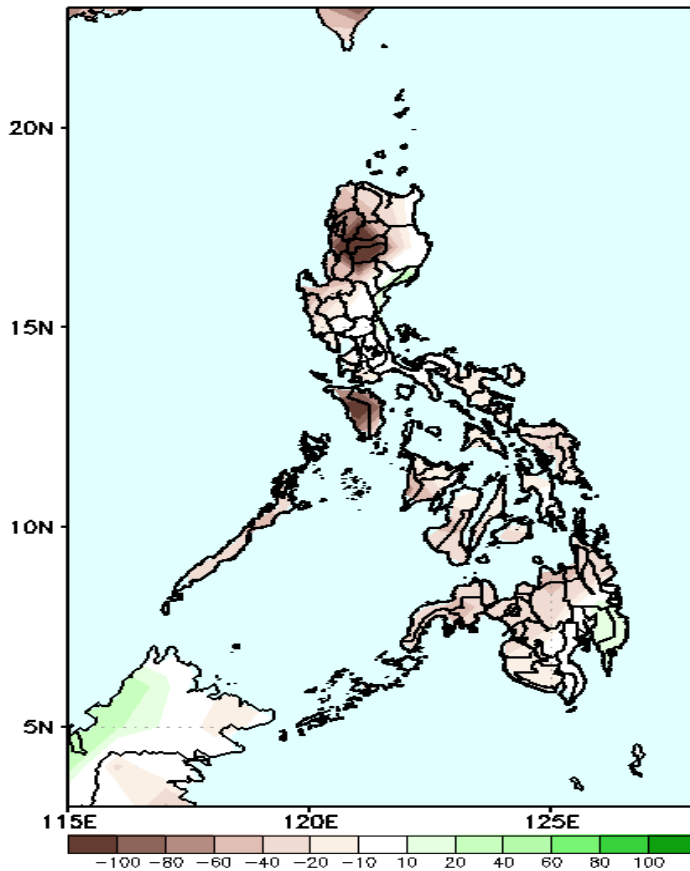


Easterlies affecting most parts of the country attributing to high likelihood of localized thunderstorms in most parts of the country during the forecast period

# Precipitation Anomaly and Exceedance Probability > 25/50 mm

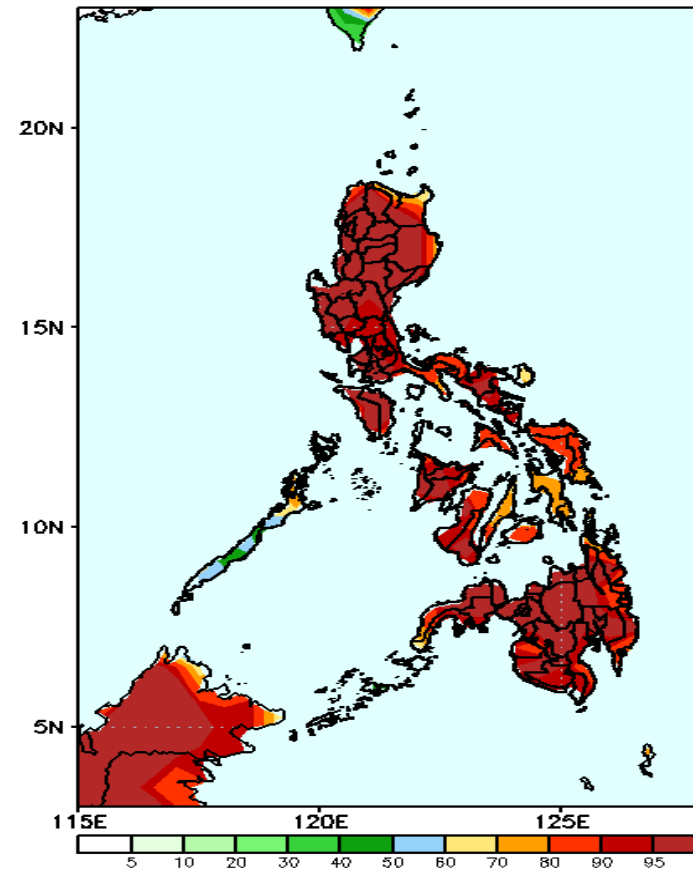
Week 1: Jun 22-28, 2022

GEFS Week-1 Precip Anomaly  
Valid: 20220622 - 20220628



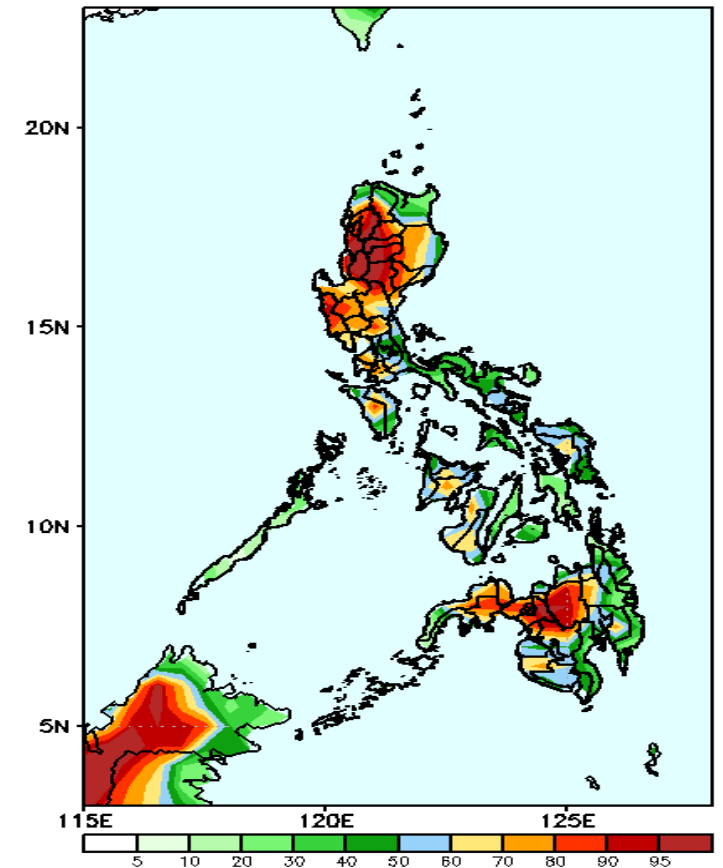
Rainfall deficit of more than 100mm is expected in Ilocos & Cordillera Region & Mindoro and 40-80mm for the rest of the country during the forecast period.

GEFS Week-1 Exceedance Prob. > 25mm  
Valid: 20220622 - 20220628



High probability of rainfall to exceed 25mm in most parts of the country during the forecast period.

GEFS Week-1 Exceedance Prob. > 50mm  
Valid: 20220622 - 20220628

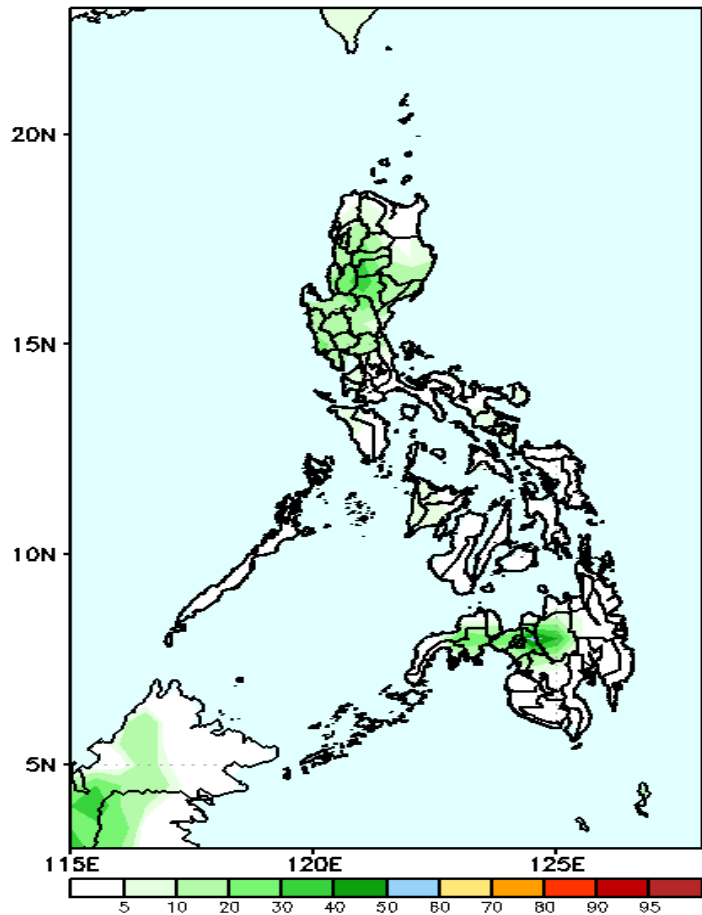


High probability of rainfall to exceed 50mm in most parts of Northern & Central Luzon, parts of Cavite and Batangas, Occidental Mindoro, Iloilo, Negros Island, Northern Mindanao and Zamboanga Peninsula while less likely for the rest the country during the forecast period.

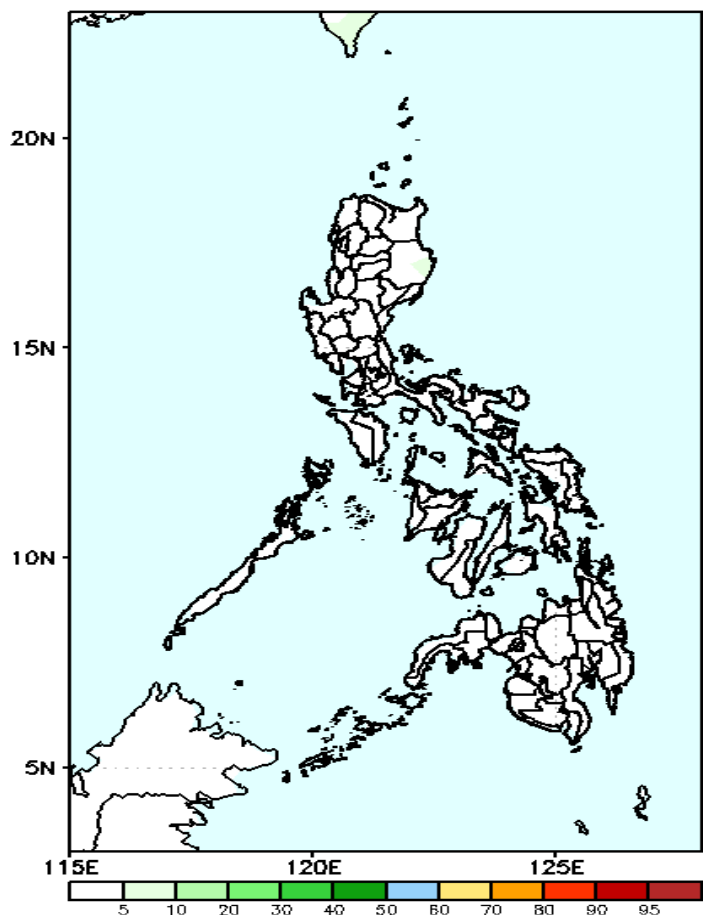
# Exceedance Probability > 100/150/200 mm

Week 1: Jun 22-28, 2022

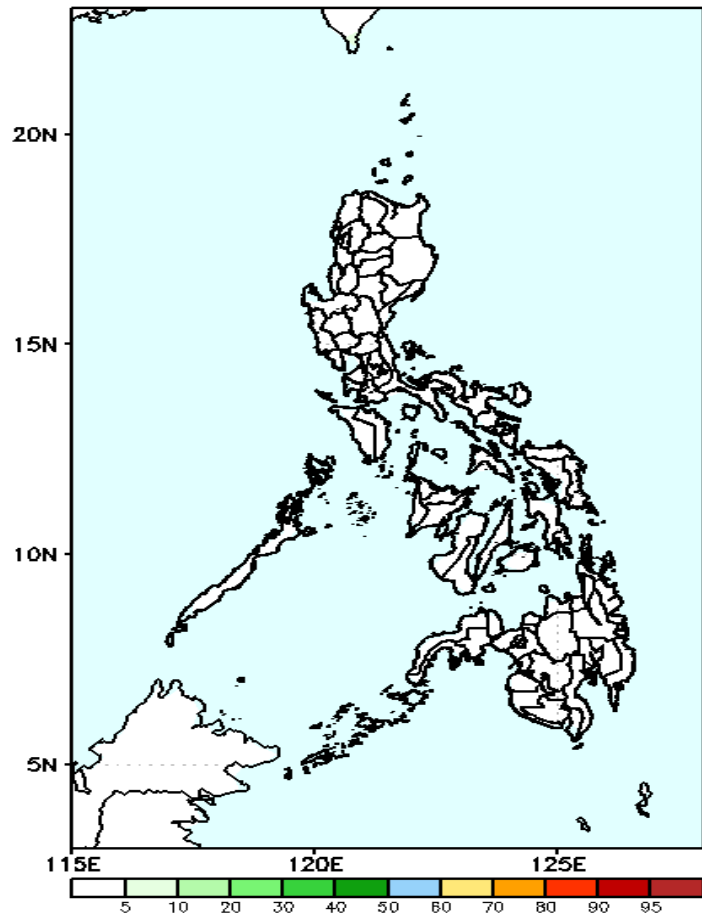
GEFS Week-1 Exceedance Prob. > 100mm  
Valid: 20220622 – 20220628



GEFS Week-1 Exceedance Prob. > 150mm  
Valid: 20220622 – 20220628



GEFS Week-1 Exceedance Prob. > 200mm  
Valid: 20220622 – 20220628



Low probability of rainfall to exceed 100mm in most parts of the country during the forecast period.

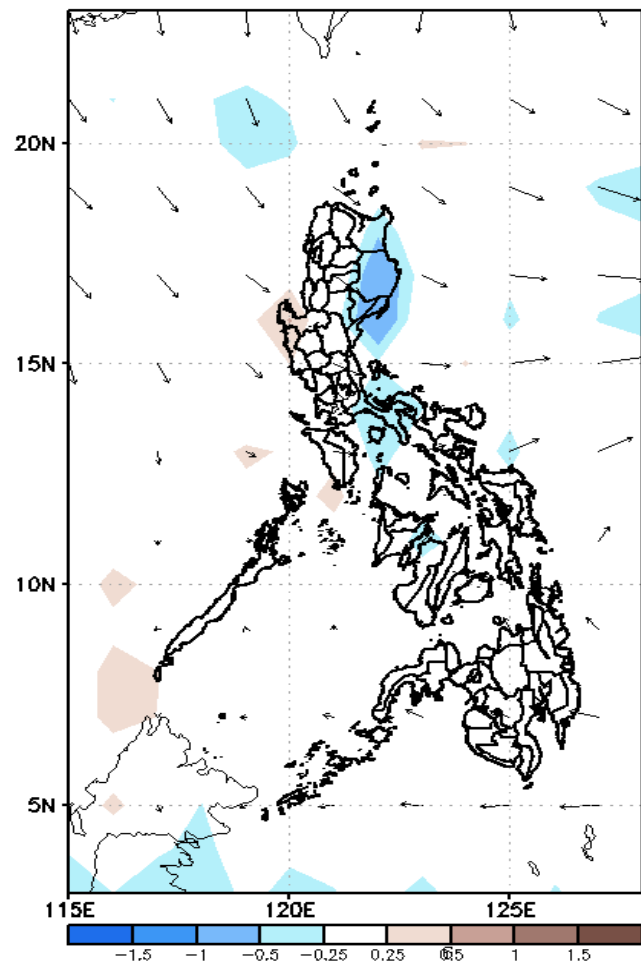
Low probability of rainfall to exceed 150mm in most parts of the country during the forecast period.

Low probability of rainfall to exceed 200mm in most parts of the country during the forecast period.

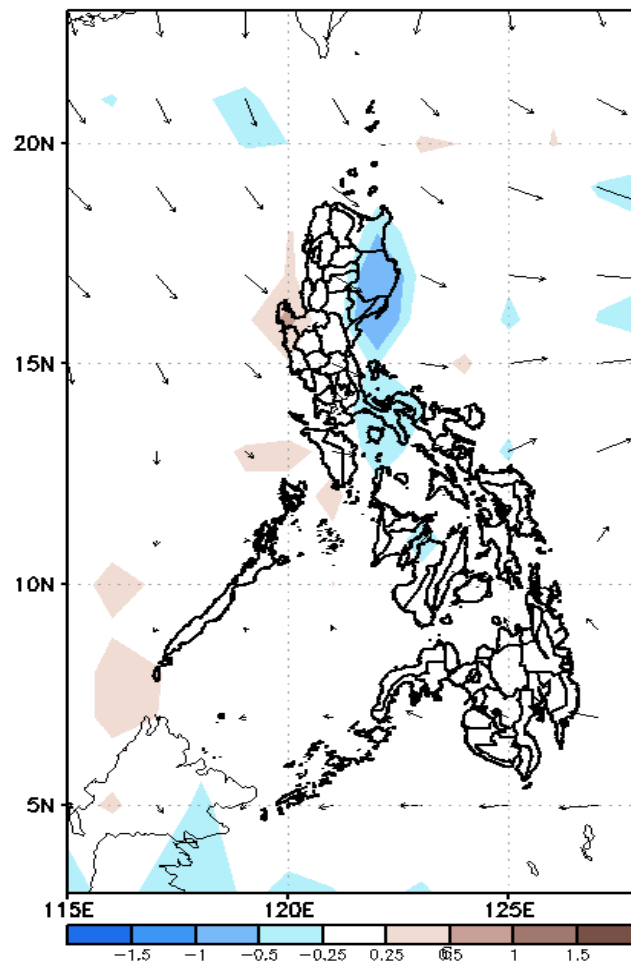
# GEFS Week-2 Forecasts: Wind Anomaly Forecast

Week 2: Jun 29- Jul 05, 2022

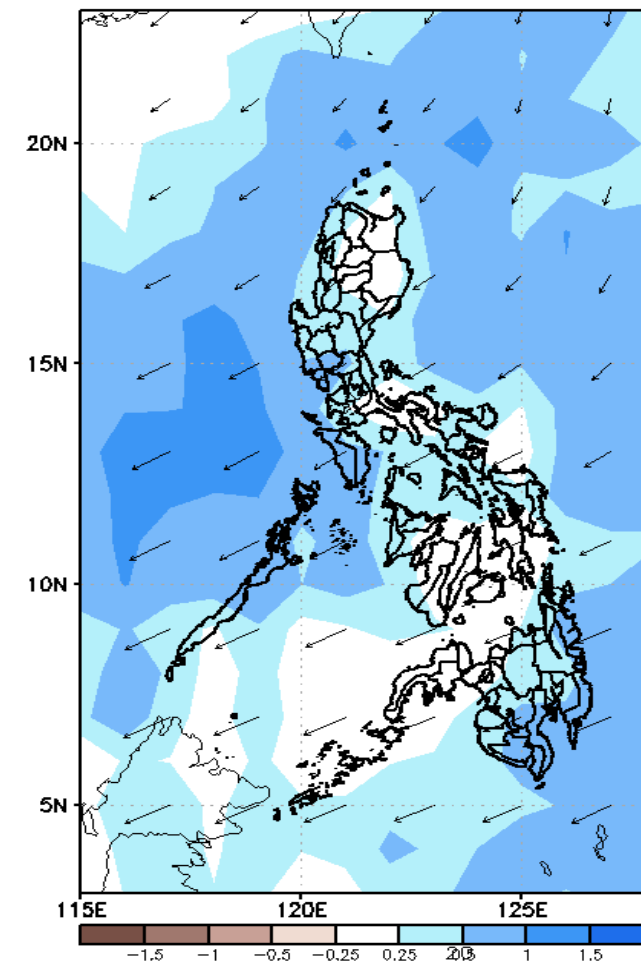
GEFS Week-2 850-hPa Divergence and Wind Anom  
Valid: 20220629 - 20220705



GEFS Week-2 700-hPa Divergence and Wind Anom  
Valid: 20220629 - 20220705



GEFS week-2 200-hPa Divergence and Wind Anom  
Valid: 20220629 - 20220705



Easterlies affecting most parts of the country attributing to high likelihood of localized thunderstorms in most parts of the country during the forecast period

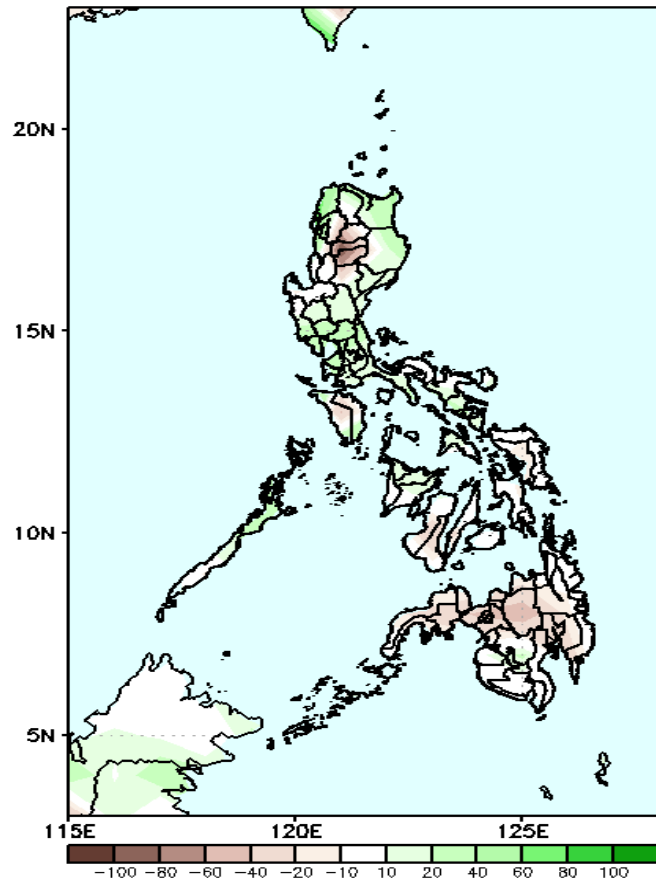
long  
GASA



# Precipitation Anomaly and Exceedance Probability > 25/50 mm

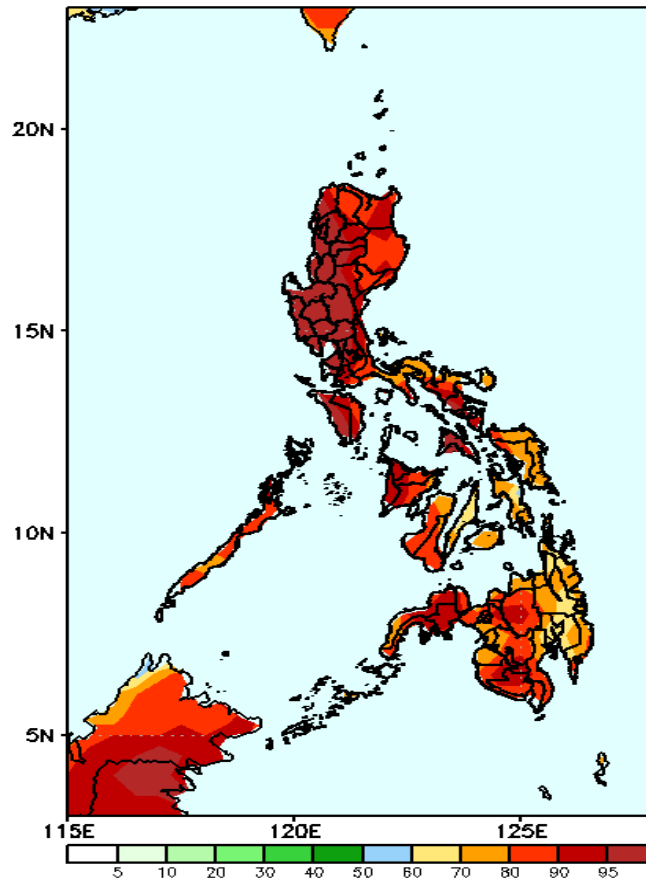
Week 2: Jun 29- Jul 05, 2022

GEFS Week-2 Precip Anomaly  
Valid: 20220629 - 20220705



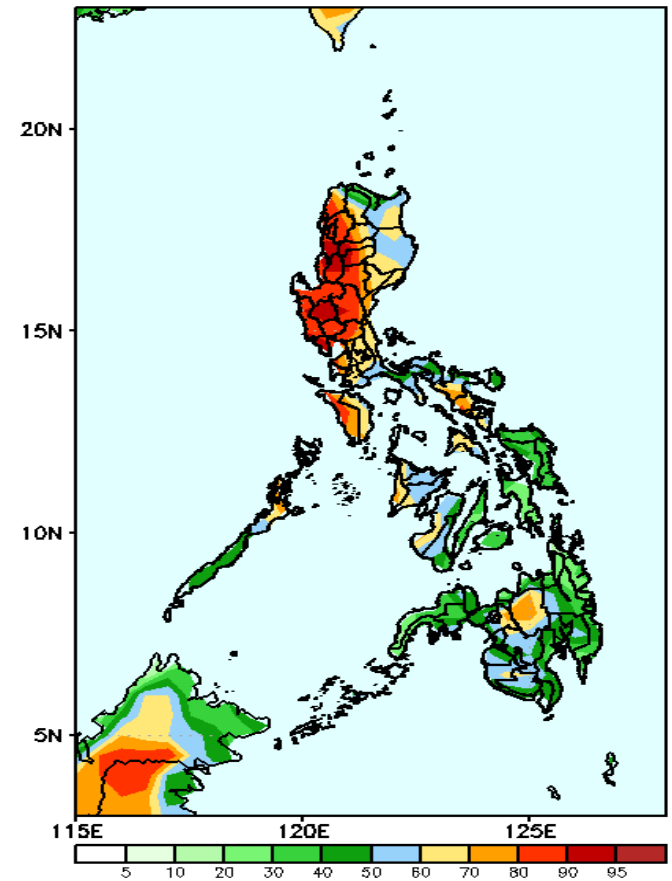
Rainfall deficit of 40-80mm is expected in Cordillera Region and 20-40mm in Visayas and Mindanao while 20-60mm increase of rainfall for the rest of Luzon during the forecast period.

GEFS Week-2 Exceedance Prob. > 25mm  
Valid: 20220629 - 20220705



High probability of rainfall to exceed 25mm in most parts of the country during the forecast period.

GEFS Week-2 Exceedance Prob. > 50mm  
Valid: 20220629 - 20220705



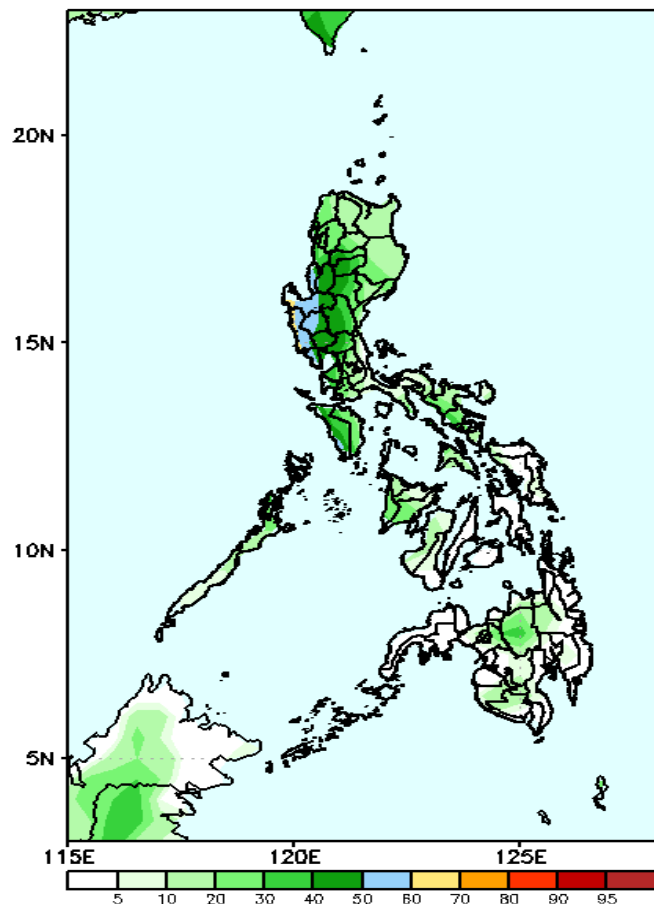
High probability of rainfall to exceed 50mm in most parts of Luzon while 50-80% chance in Visayas and Mindanao during the forecast period



# Exceedance Probability > 100/150/200 mm

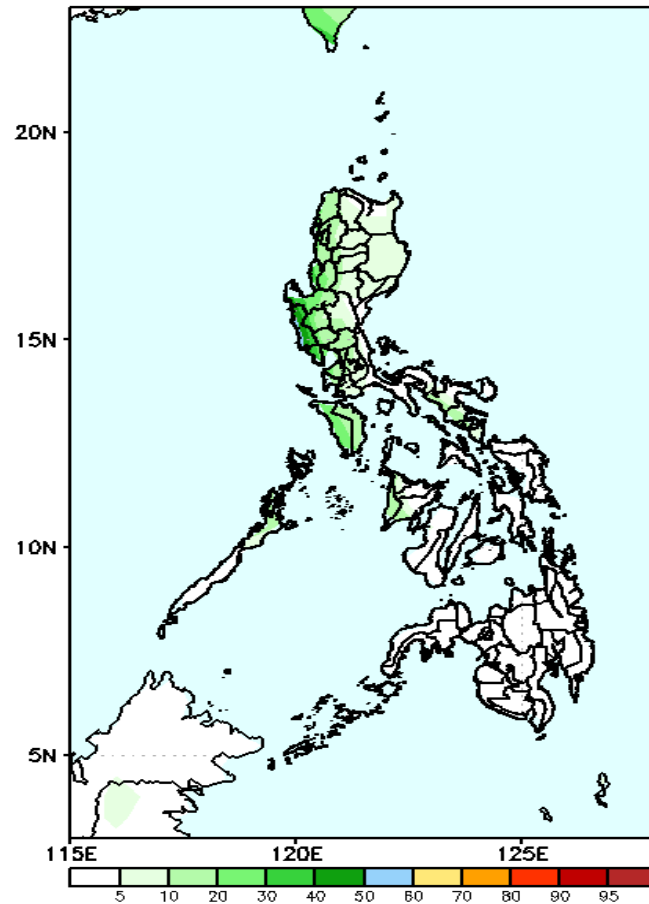
Week 2: Jun 29- Jul 05, 2022

GEFS Week-2 Exceedance Prob. > 100mm  
Valid: 20220629 - 20220705



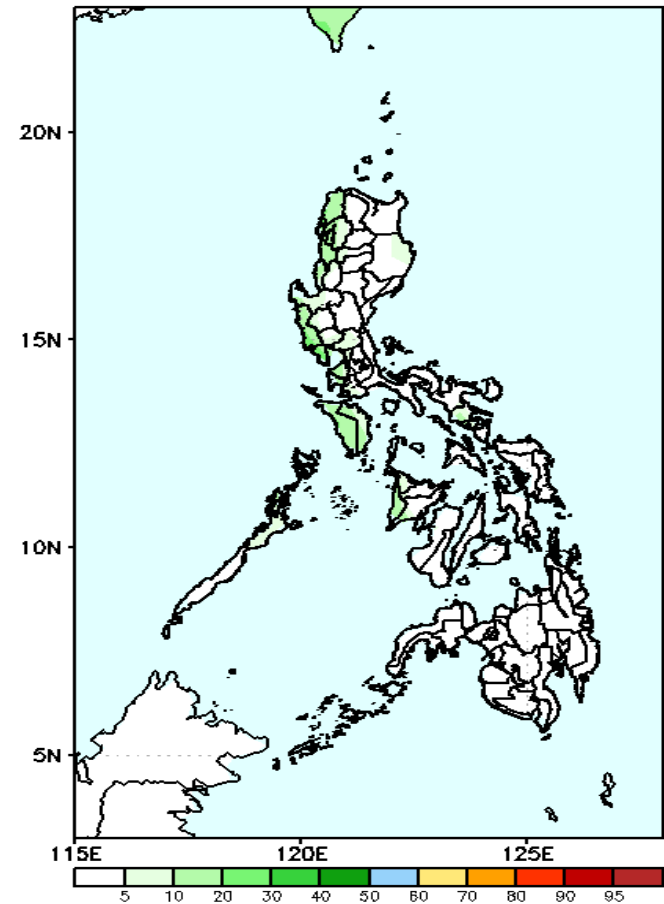
Low probability of rainfall to exceed 100mm in most parts of the country during the forecast period.

GEFS Week-2 Exceedance Prob. > 150mm  
Valid: 20220629 - 20220705



Low probability of rainfall to exceed 150mm in most parts of the country during the forecast period.

GEFS Week-2 Exceedance Prob. > 200mm  
Valid: 20220629 - 20220705

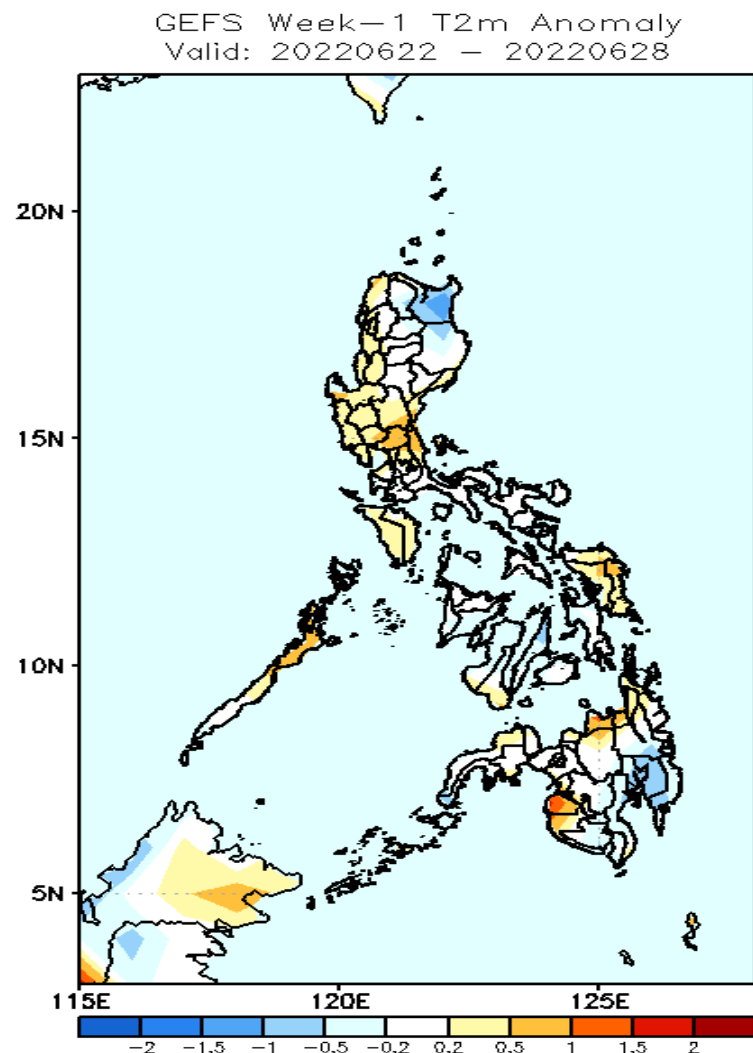


Low probability of rainfall to exceed 200mm in most parts of the country during the forecast period.

19  
SA

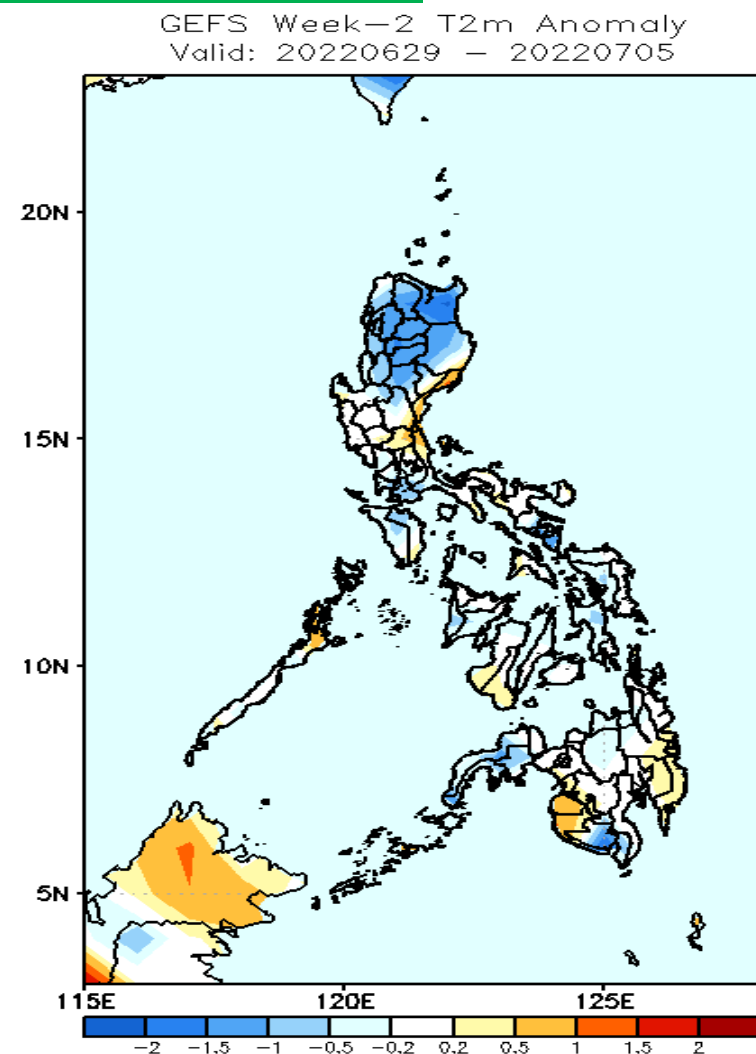


# GEFS Week-1 & 2 Forecasts: T2m Anomaly



## 2m Temperature Week 1: Jun 22-28, 2022

Average to slightly warmer surface air temperature will likely experience in most parts of the country except in Apayao and Compostela Valley (slightly cooler) and Maguindanao (warmer) during the forecast period.



## 2m Temperature Week 2: Jun 29-Jul 05, 2022

Cooler surface air temperature will likely experience in most parts Ilocos & Cordillera Region, Cagayan Valley and South Cotabato while average to slightly warmer for the rest of the country during the forecast period.