



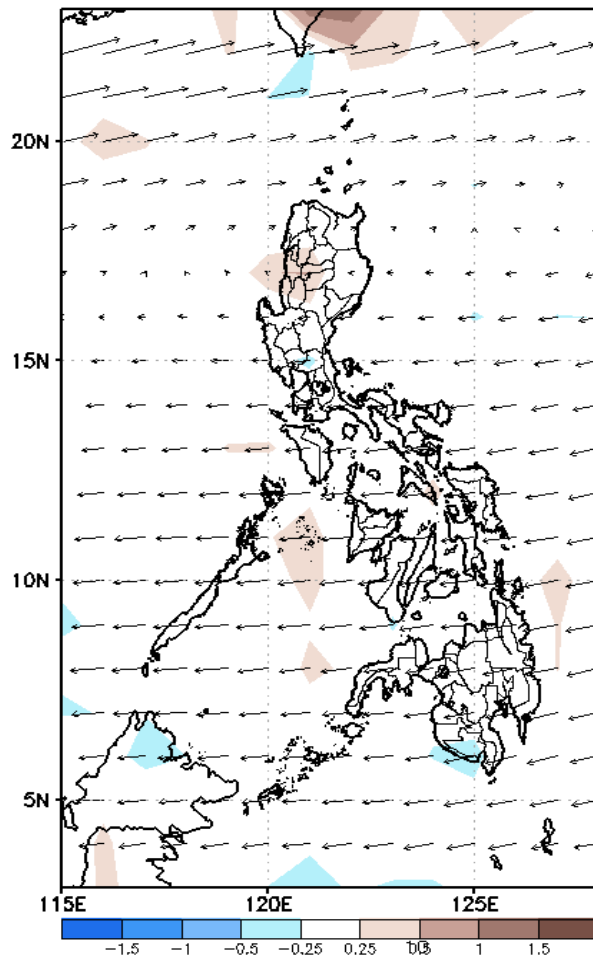
Week 1 & Week 2 Forecast for the Philippines using GEFS Model



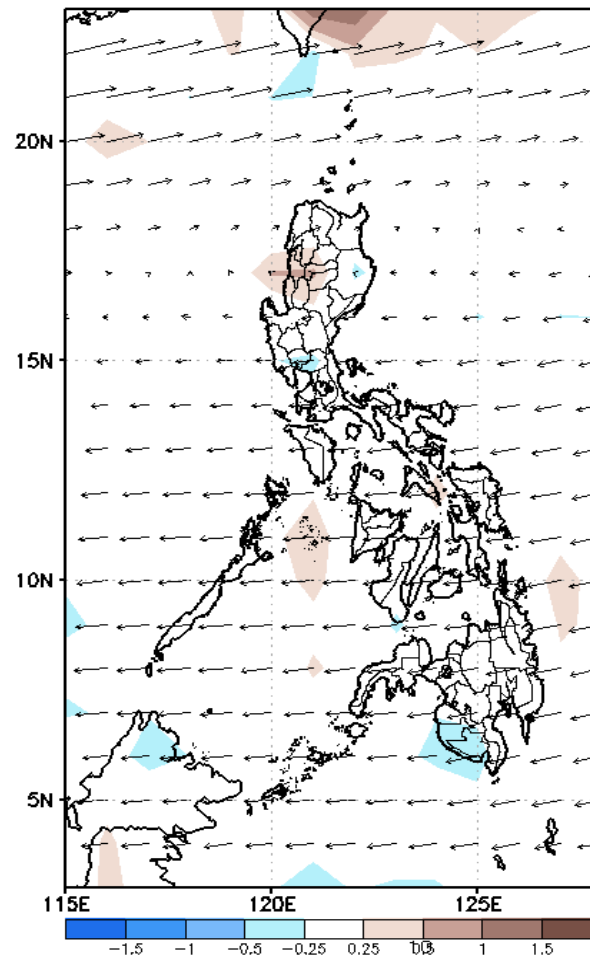
GEFS Week-1 Forecasts: Wind Anomaly Forecast

Week 1: Mar 22-28, 2023

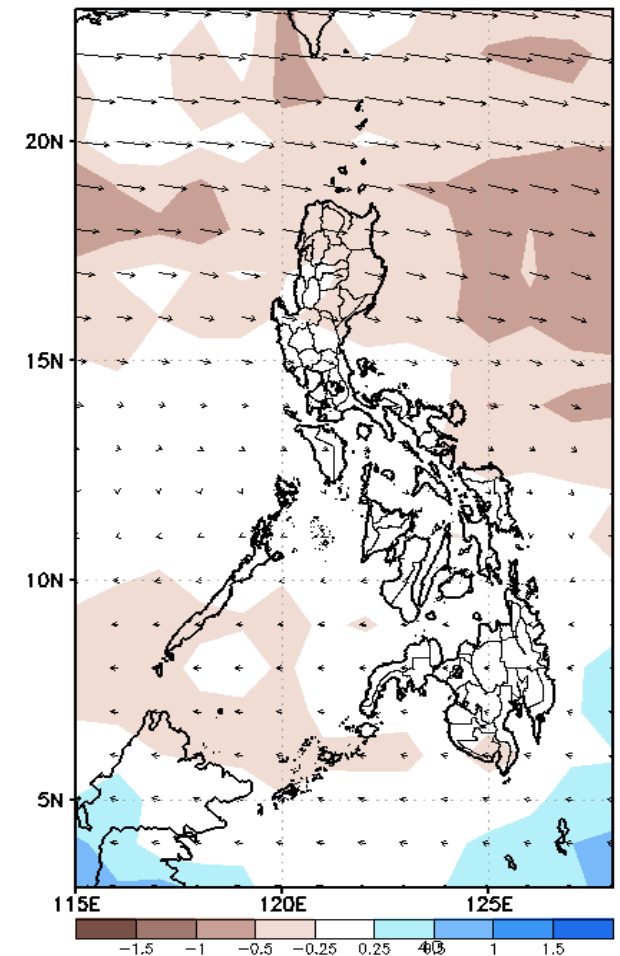
GEFS Week-1 850-hPa Divergence and Wind Anom
Valid: 20230322 - 20230328



GEFS Week-1 700-hPa Divergence and Wind Anom
Valid: 20230322 - 20230328



GEFS Week-1 200-hPa Divergence and Wind Anom
Valid: 20230322 - 20230328



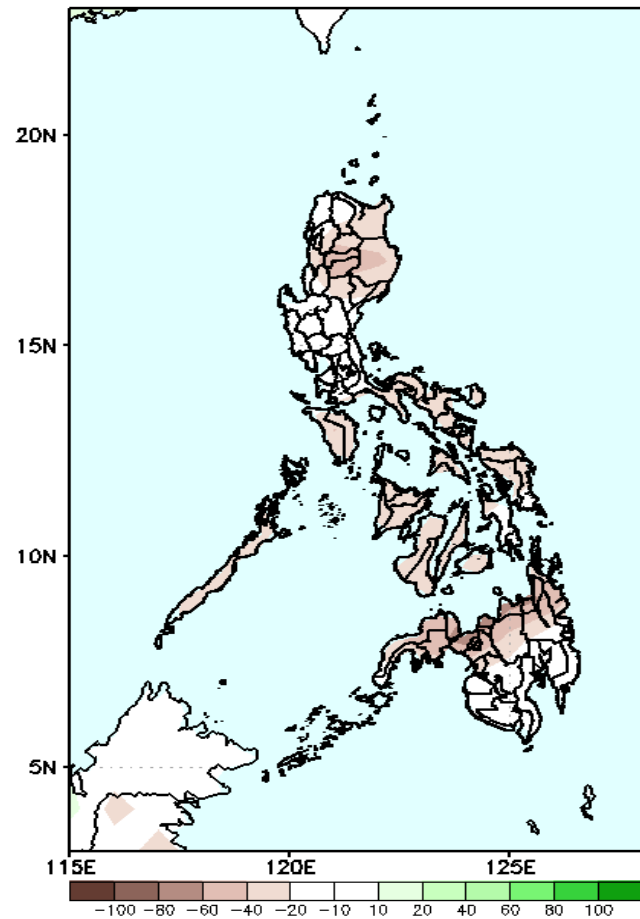
Easterlies is forecasted to affect most parts of the country expect warmer temperature during the forecast period.

Precipitation Anomaly and Exceedance Probability > 25/50 mm

- Very high probability
- High Probability
- Moderate Probability
- Low Probability

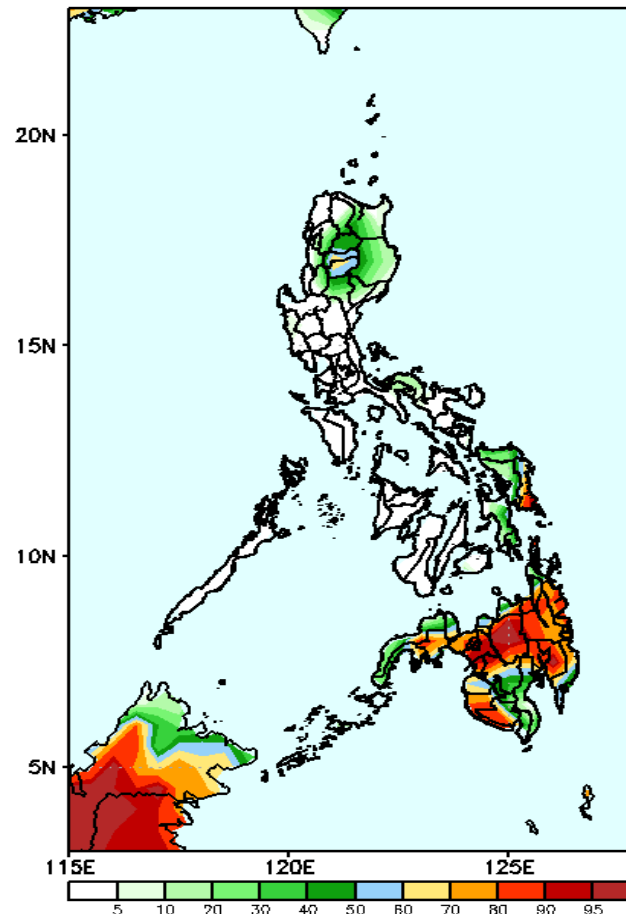
Week 1: Mar 22-28, 2023

GEFS Week-1 Precip Anomaly
Valid: 20230322 - 20230328



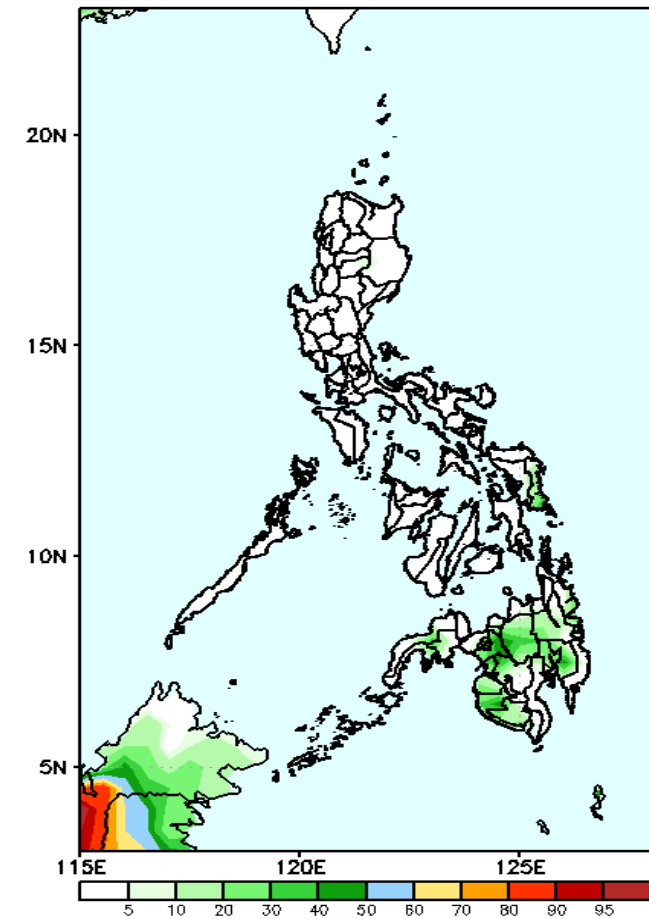
Rainfall deficit of 40-100mm is expected in most parts of the country during the forecast period.

GEFS Week-1 Exceedance Prob. > 25mm
Valid: 20230322 - 20230328



High to very high probability of rainfall to exceed 25mm in most parts of Mindanao and Eastern Samar and moderate probability in Cordillera Region while low chance over the rest of the country.

GEFS Week-1 Exceedance Prob. > 50mm
Valid: 20230322 - 20230328

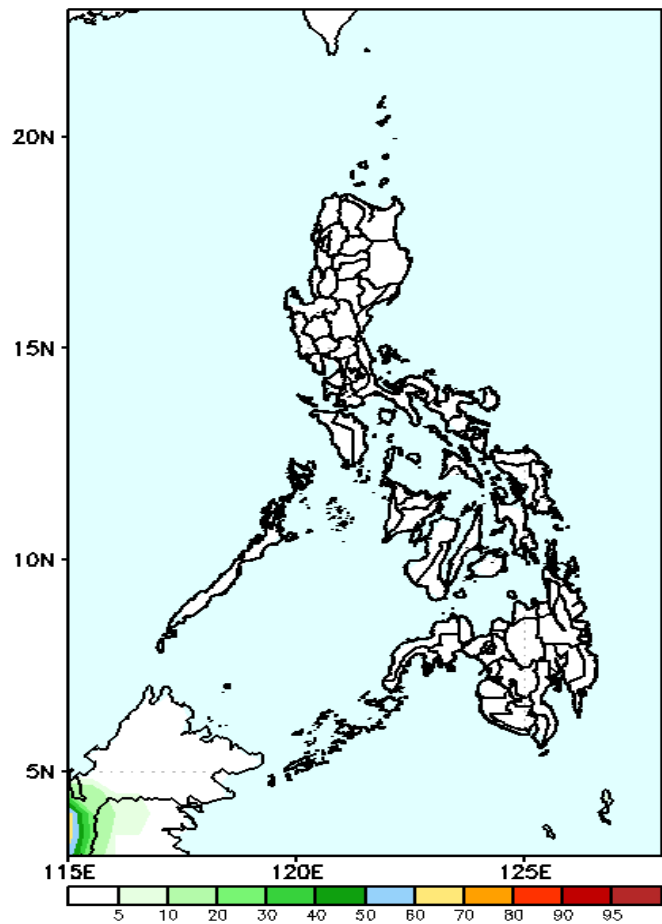


Low probability of rainfall to exceed 50mm in most parts of the country.

Exceedance Probability > 100/150/200 mm

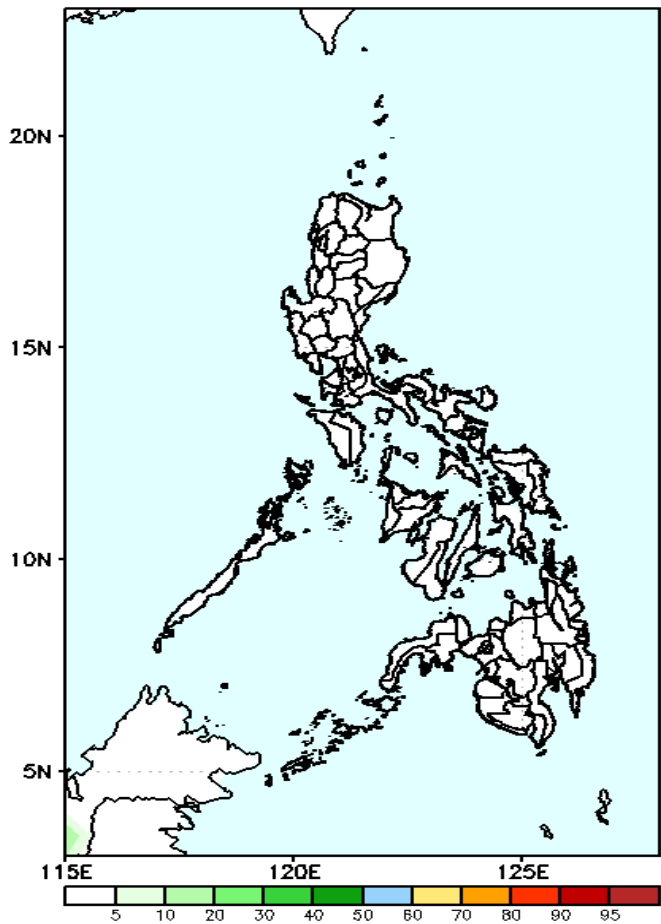
Week 1: Mar 22-28, 2023

GEFS Week-1 Exceedance Prob. > 100mm
Valid: 20230322 – 20230328



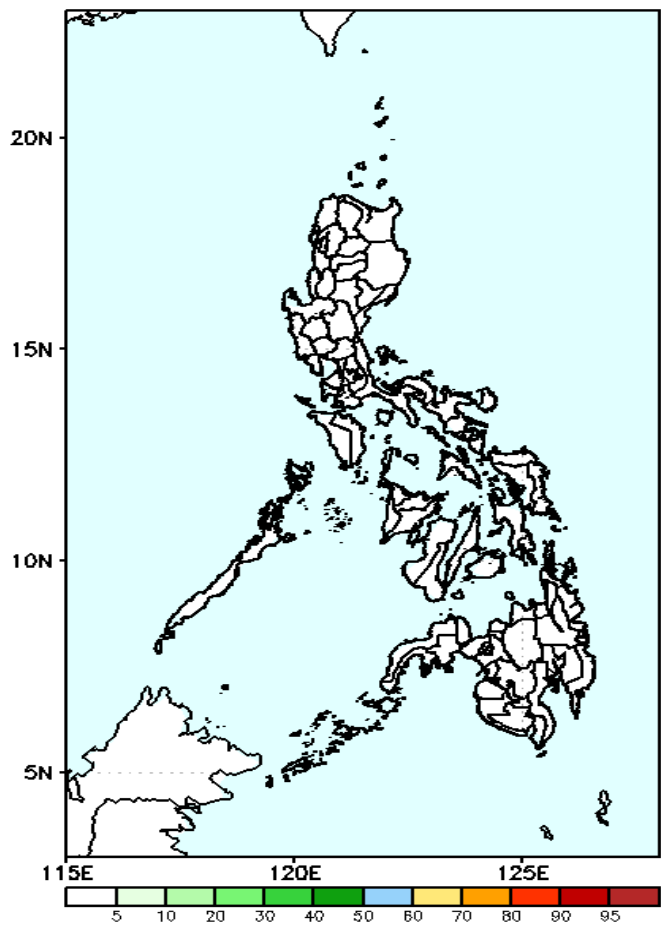
Low probability of rainfall to exceed 100mm in most parts of the country during the forecast period.

GEFS Week-1 Exceedance Prob. > 150mm
Valid: 20230322 – 20230328



Low probability of rainfall to exceed 150mm in most parts of the country during the forecast period.

GEFS Week-1 Exceedance Prob. > 200mm
Valid: 20230322 – 20230328

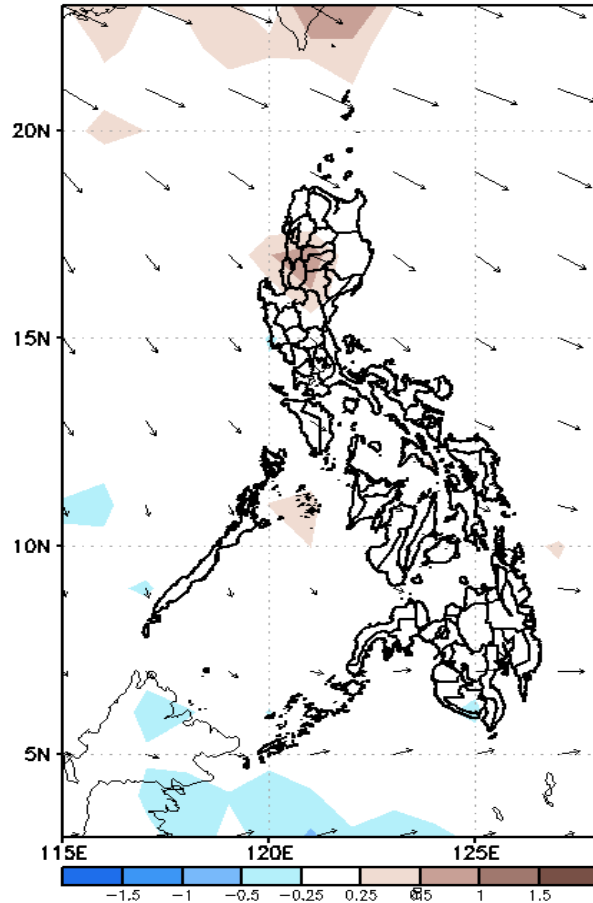


Low probability of rainfall to exceed 200mm in most parts of the country during the forecast period.

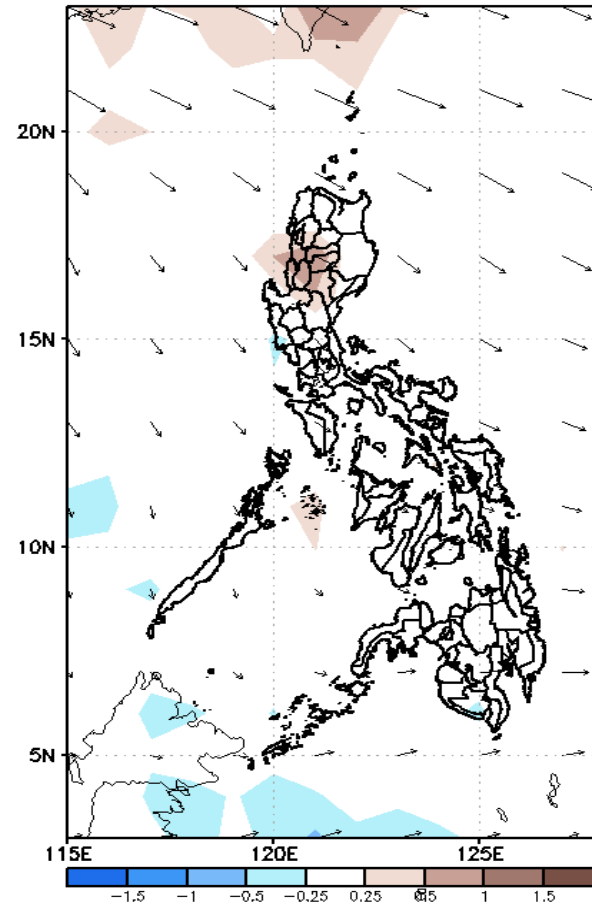
GEFS Week-2 Forecasts: Wind Anomaly Forecast

Week 2: Mar 29-Apr 04, 2023

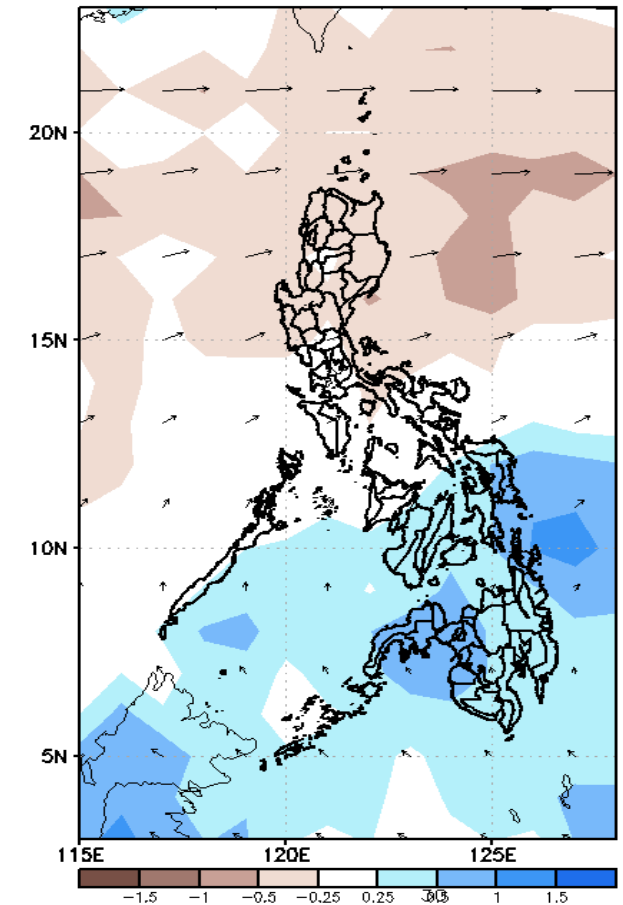
GEFS Week-2 850-hPa Divergence and Wind Anom
Valid: 20230329 - 20230404



GEFS Week-2 700-hPa Divergence and Wind Anom
Valid: 20230329 - 20230404

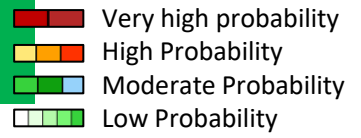


GEFS week-2 200-hPa Divergence and Wind Anom
Valid: 20230329 - 20230404



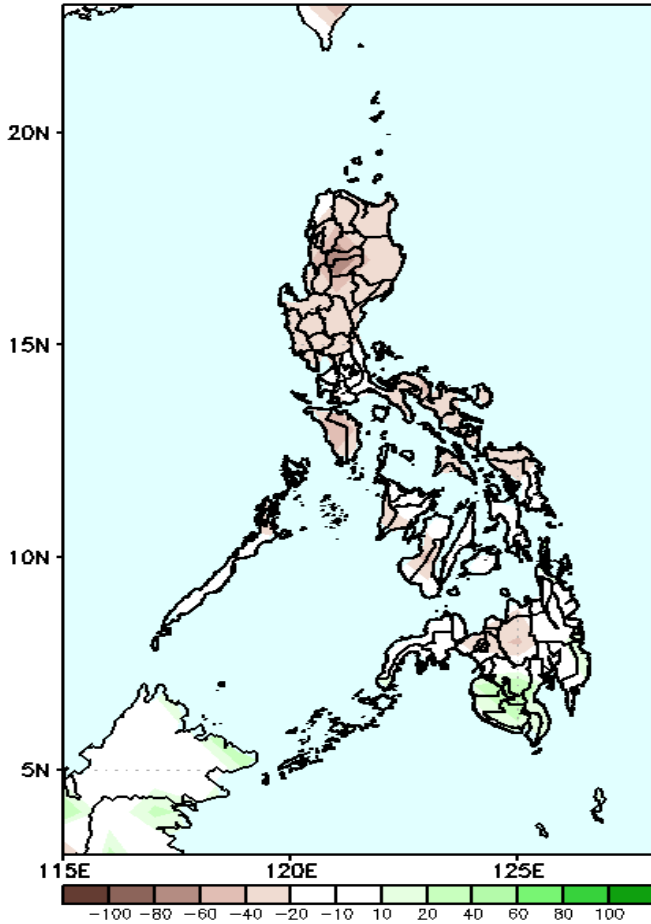
Easterlies is forecasted to affect most parts of the country expect warmer temperature during the forecast period.

Precipitation Anomaly and Exceedance Probability > 25/50 mm



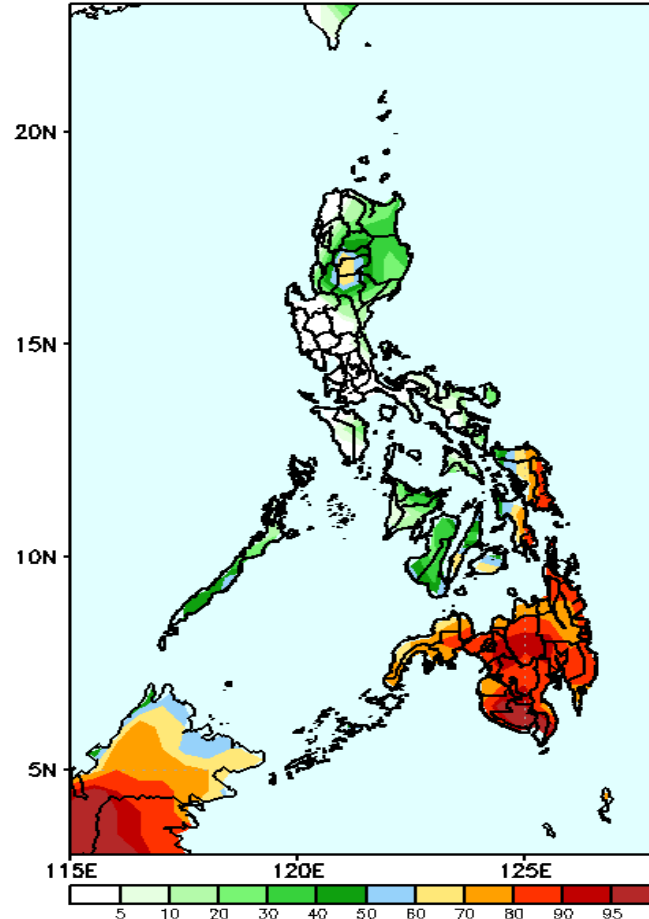
Week 2: Mar 29-Apr 04, 2023

GEFS Week-2 Precip Anomaly
Valid: 20230329 - 20230404



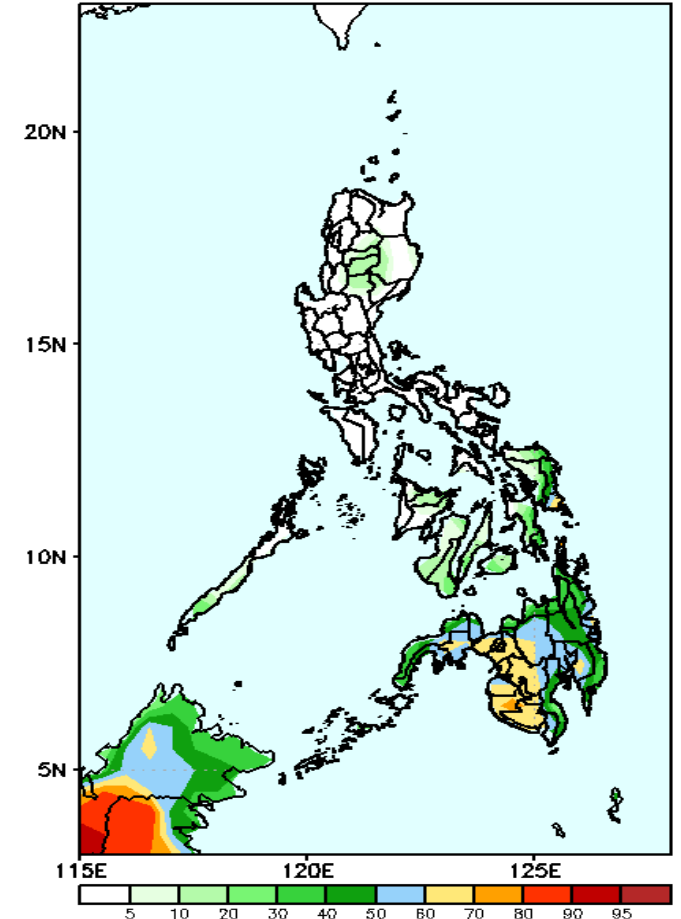
Rainfall deficit of 40-80mm is expected in most parts of the country except in southwestern parts of Mindanao where there is 20-40mm increase of rainfall during the forecast period.

GEFS Week-2 Exceedance Prob. > 25mm
Valid: 20230329 - 20230404



High to very high probability of rainfall to exceed 25mm in Mindanao and moderate to high probability in Eastern Visayas and northern Luzon while low chance over the rest of the country.

GEFS Week-2 Exceedance Prob. > 50mm
Valid: 20230329 - 20230404



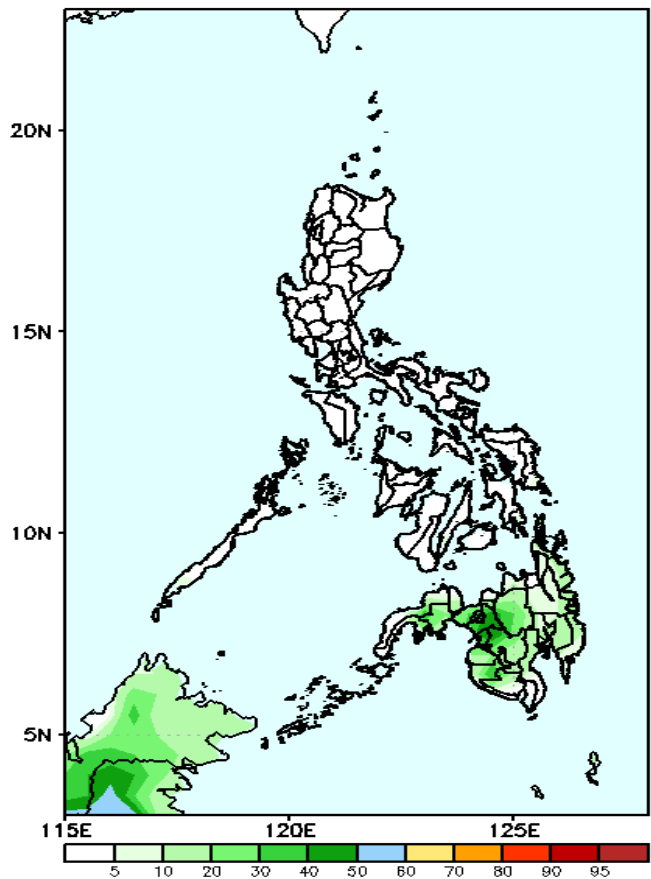
Moderate to high probability of rainfall to exceed 50mm in most parts of Mindanao while low chance over the rest of the country.



Exceedance Probability > 100/150/200 mm

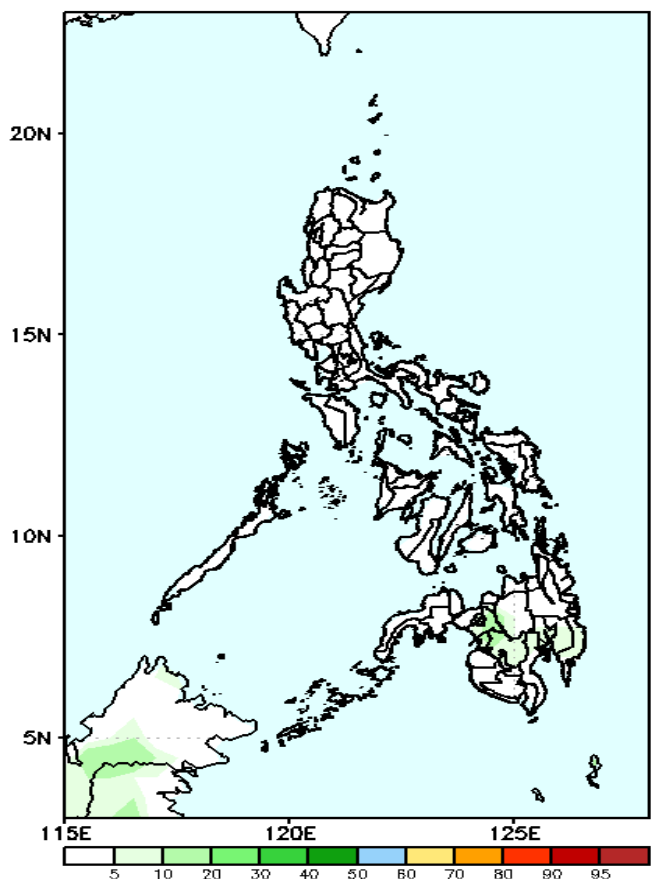
Week 2: Mar 29-Apr 04, 2023

GEFS Week-2 Exceedance Prob. > 100mm
Valid: 20230329 - 20230404



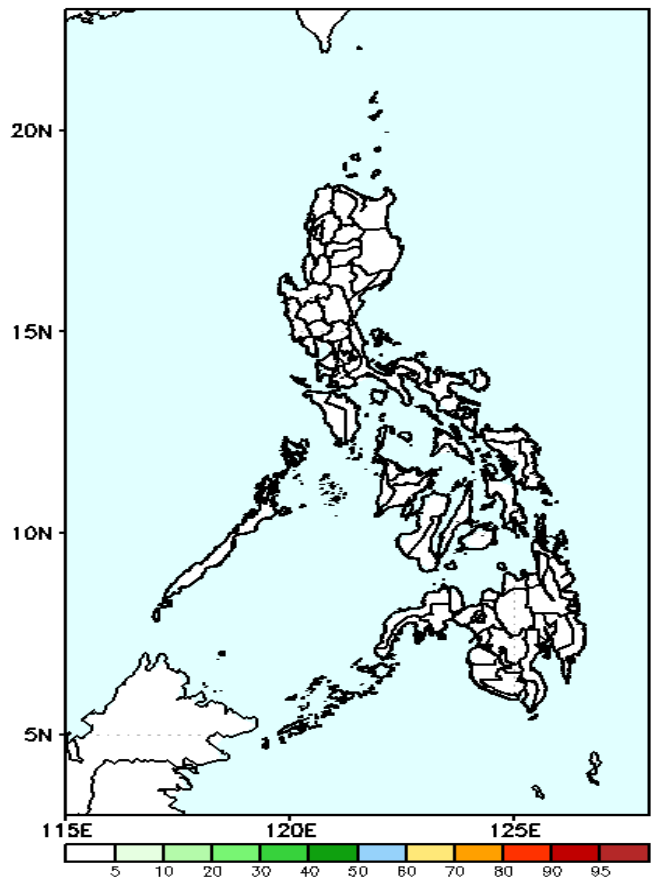
Low probability of rainfall to exceed 100mm in most parts of the country during the forecast period.

GEFS Week-2 Exceedance Prob. > 150mm
Valid: 20230329 - 20230404



Low probability of rainfall to exceed 150mm in most parts of the country during the forecast period.

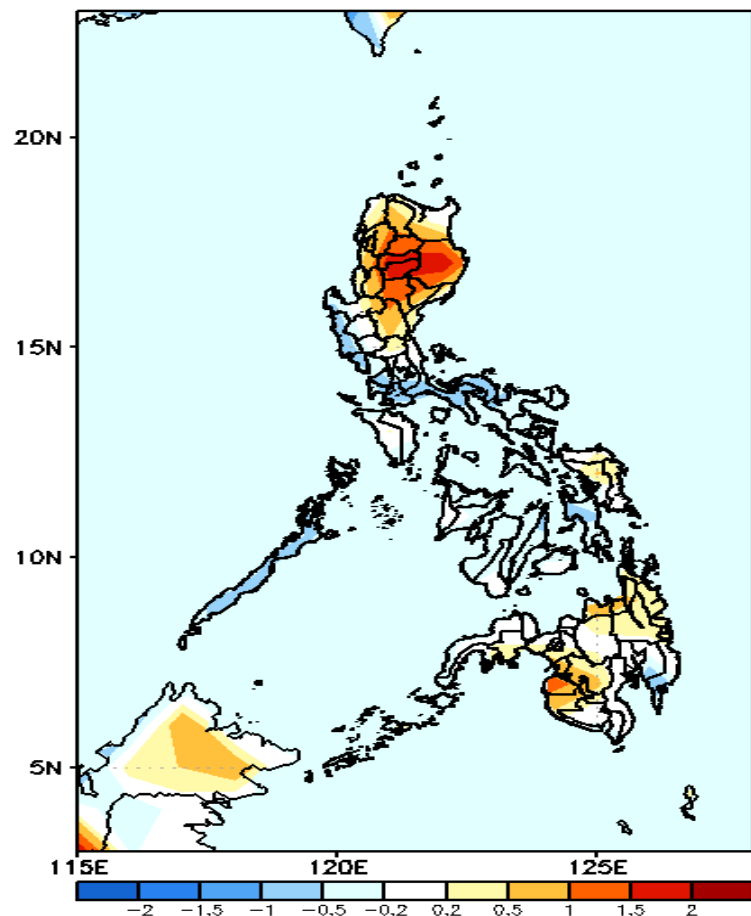
GEFS Week-2 Exceedance Prob. > 200mm
Valid: 20230329 - 20230404



Low probability of rainfall to exceed 200mm in most parts of the country during the forecast period.

GEFS Week-1 & 2 Forecasts: T2m Anomaly

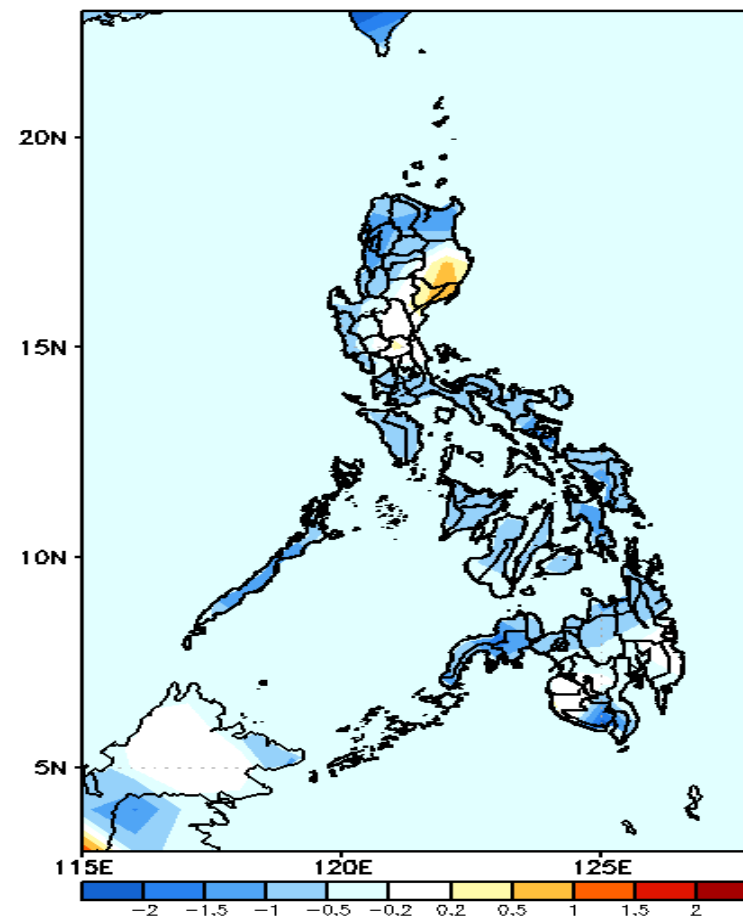
GEFS Week-1 T2m Anomaly
Valid: 20230322 - 20230328



2m Temperature Week 1: Mar 22-28, 2023

Slightly warmer to warmer than average surface air temperature will likely experience in most parts of Ilocos Region, CAR, Cagayan Valley, Nueva Ecija, Samar provinces and most of Mindanao while the rest of the country will likely have average to slightly cooler temperature during the forecast period.

GEFS Week-2 T2m Anomaly
Valid: 20230329 - 20230404



2m Temperature Week 2: Mar 29-Apr 04, 2023

Average to cooler than average surface air temperature will likely experience in most parts of the country except in some areas of slightly warmer temperature Isabela and Aurora during the forecast period.