



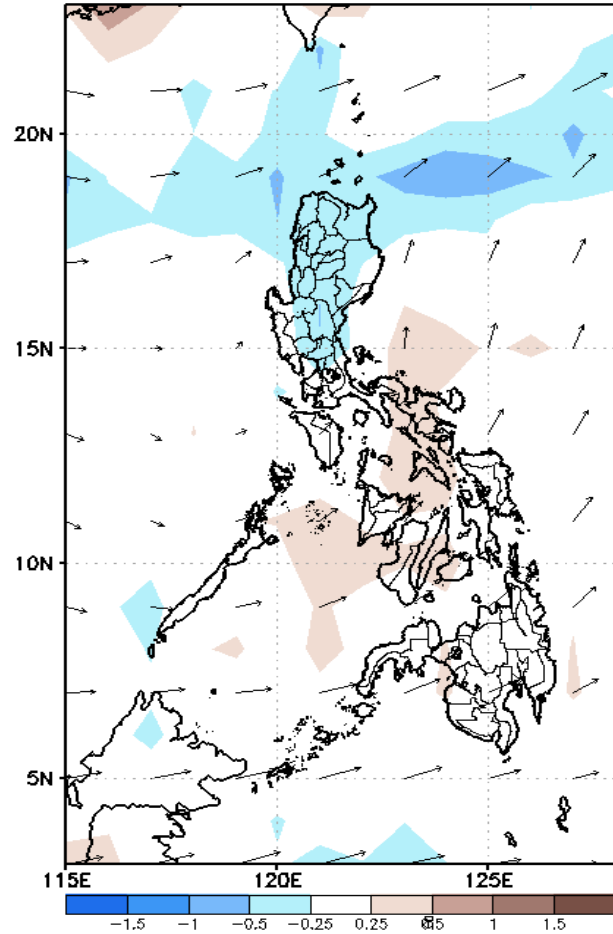
# Week 1 & Week 2 Forecast for the Philippines using GEFS Model



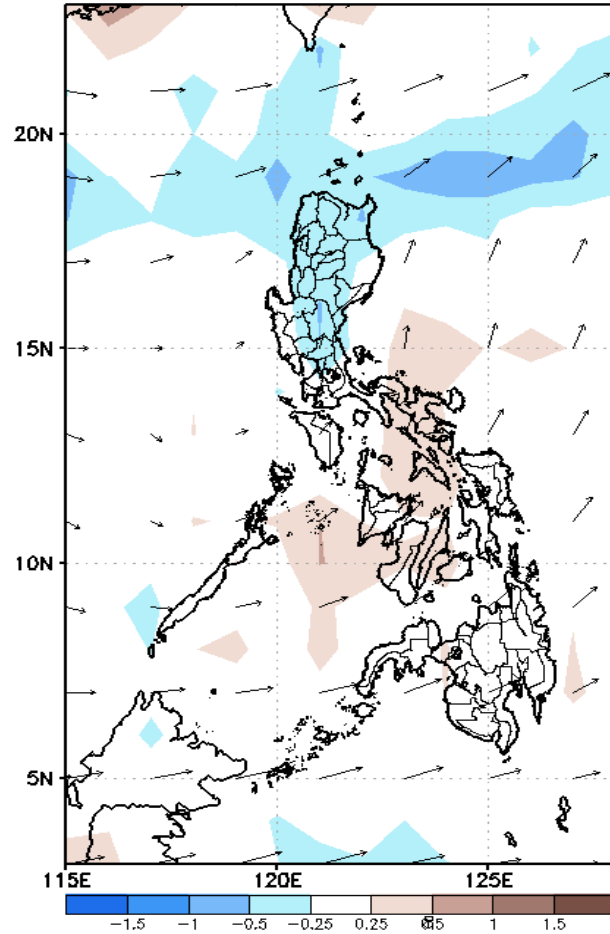
# GEFS Week-1 Forecasts: Divergence & Wind Anomaly

Week 1: February 22-28, 2021

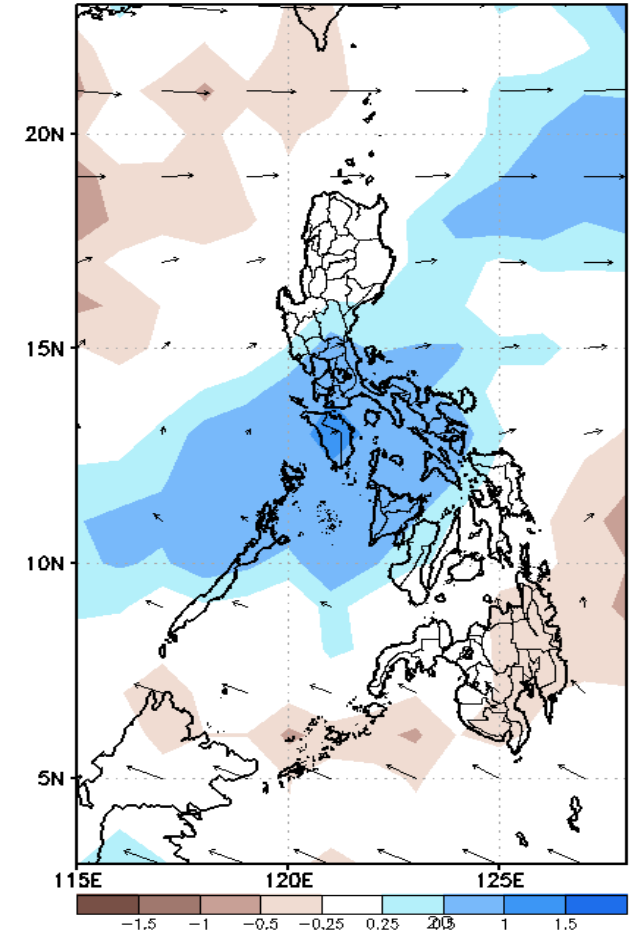
GEFS Week-1 850-hPa Divergence and Wind Anom  
Valid: 20210222 - 20210228



GEFS Week-1 700-hPa Divergence and Wind Anom  
Valid: 20210222 - 20210228



GEFS Week-1 200-hPa Divergence and Wind Anom  
Valid: 20210222 - 20210228

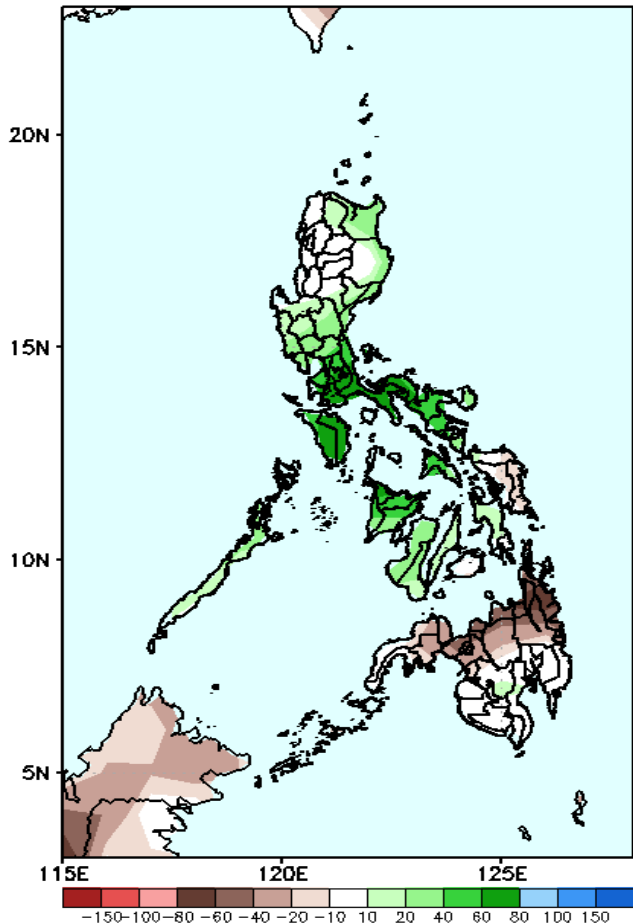


Upper and low level Divergence suggest likelihood of precipitation in most parts of the Luzon and Western Visayas. Northeast Monsoon affecting Northern and Extreme Northern Luzon while Easterlies affecting Visayas and Mindanao during the forecast period.

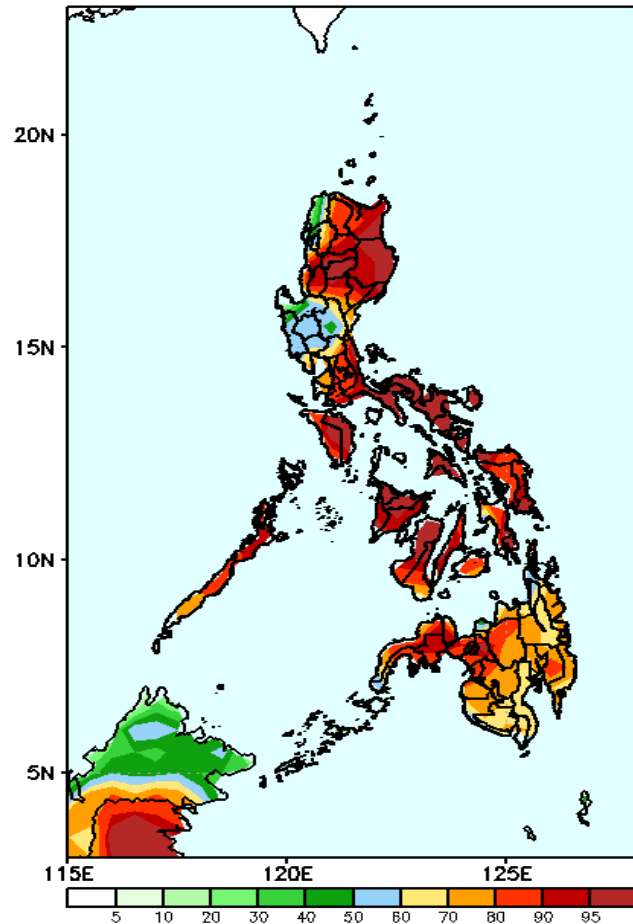
# Precipitation Anomaly and Exceedance Probability > 25/50 mm

## Week 1: February 22-28, 2021

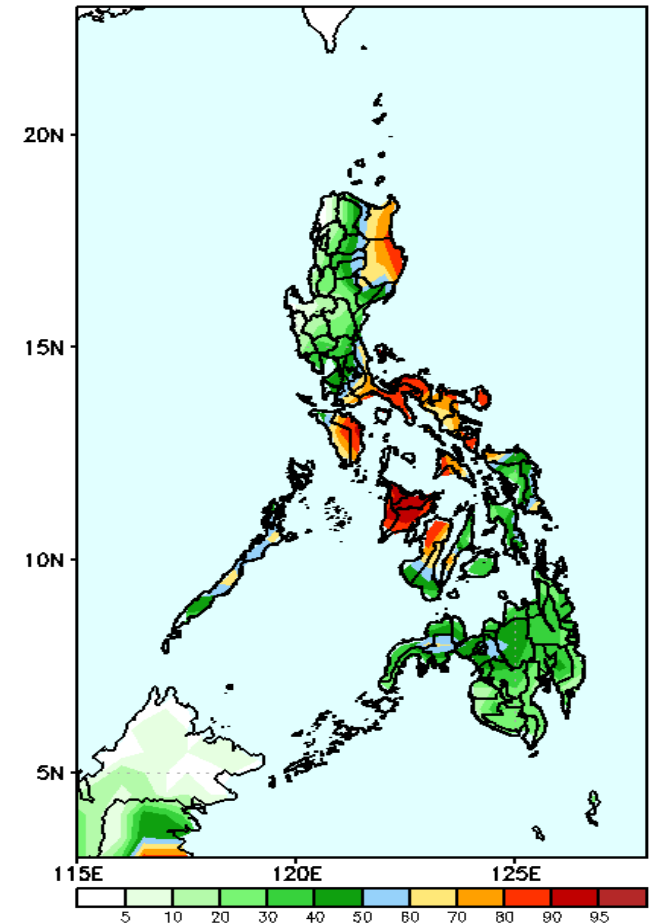
GEFS Week-1 Precip Anomaly  
Valid: 20210222 - 20210228



GEFS Week-1 Exceedance Prob. > 25mm  
Valid: 20210222 - 20210228



GEFS Week-1 Exceedance Prob. > 50mm  
Valid: 20210222 - 20210228



Increase of rainfall of 20-40mm is expected in most parts of Cagayan Valley and Central Luzon and up to 100mm increase in Southern Luzon and most parts of Visayas while rainfall deficit of 40-80mm in northern half of Mindanao.

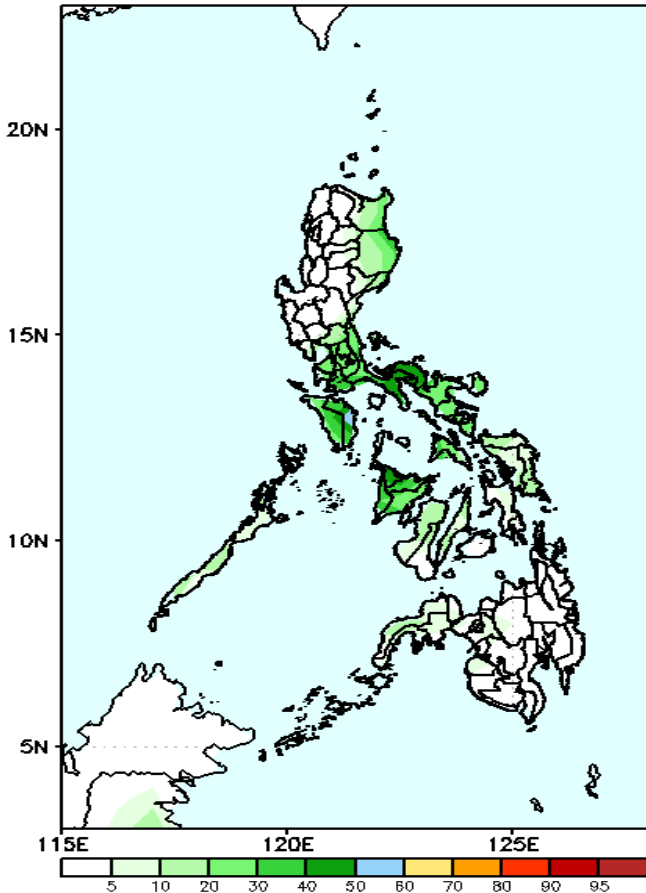
High probability of rainfall to exceed 25mm in most part of the country except Ilocos Norte, Pangasinan and most of Central Luzon during the forecast period.

High probability of rainfall to exceed 50mm in Cagayan, Isabela, Batangas, Quezon, Bicol region, Mindoro provinces and Panay Island while less likely for the remaining parts of the country Norte during the forecast period.

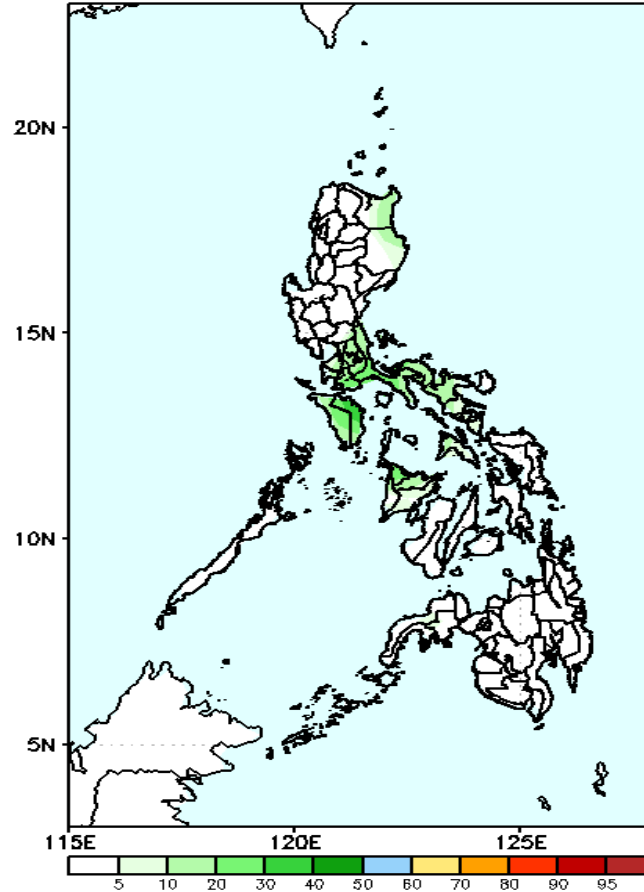
# Exceedance Probability > 100/150/200 mm

## Week 1: February 22-28, 2021

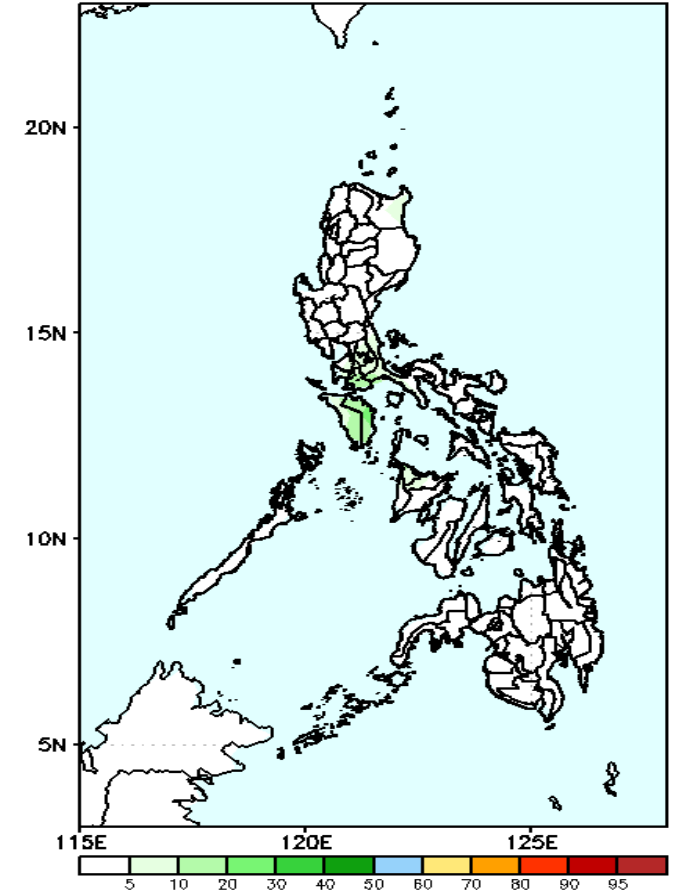
GEFS Week-1 Exceedance Prob. > 100mm  
Valid: 20210222 - 20210228



GEFS Week-1 Exceedance Prob. > 150mm  
Valid: 20210222 - 20210228



GEFS Week-1 Exceedance Prob. > 200mm  
Valid: 20210222 - 20210228



Less probability of rainfall to exceed 100mm in most parts of the country during the forecast period.

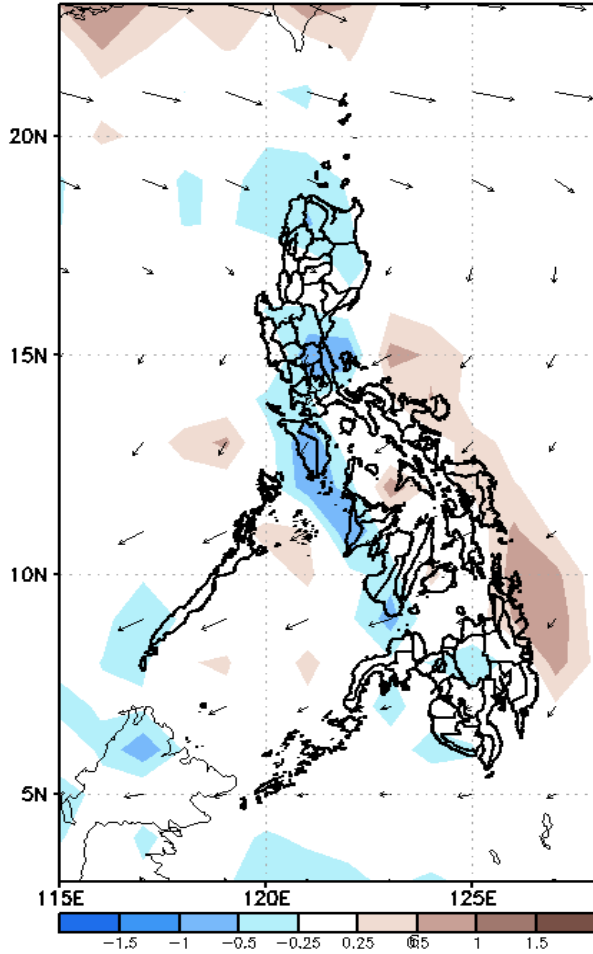
Less probability of rainfall to exceed 150mm in most parts of the country during the forecast period.

Less probability of rainfall to exceed 200mm in most parts of the country during the forecast period.

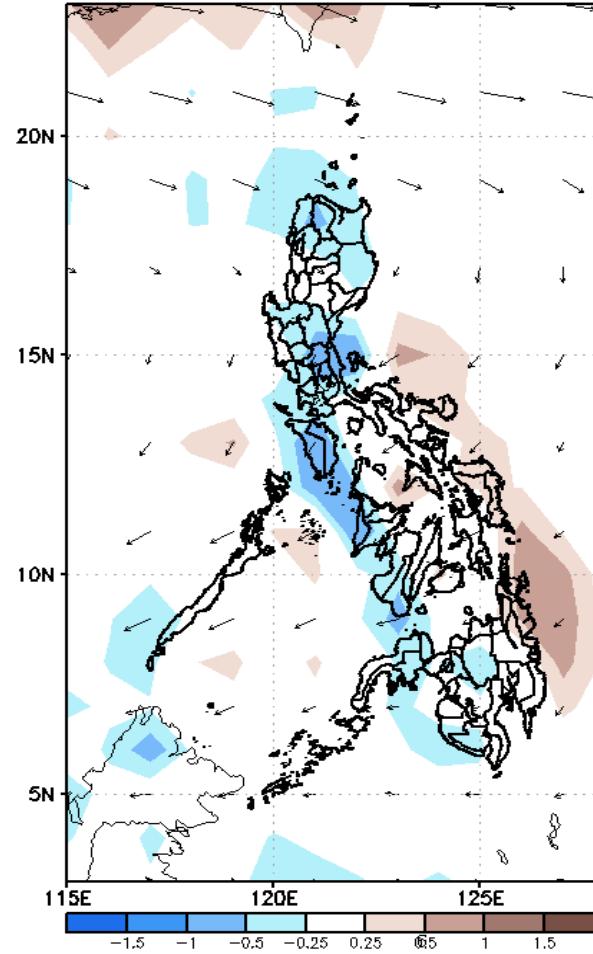
# GEFS Week-2 Forecasts: Divergence & Wind Anomaly

## Week 2: March 01-07, 2021

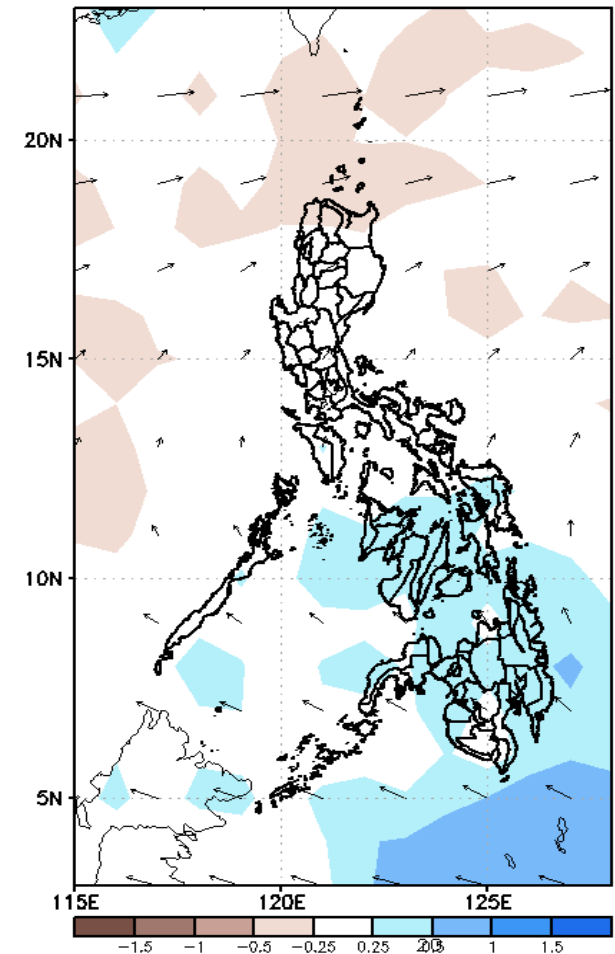
GEFS Week-2 850-hPa Divergence and Wind Anom  
Valid: 20210301 - 20210307



GEFS Week-2 700-hPa Divergence and Wind Anom  
Valid: 20210301 - 20210307



GEFS week-2 200-hPa Divergence and Wind Anom  
Valid: 20210301 - 20210307

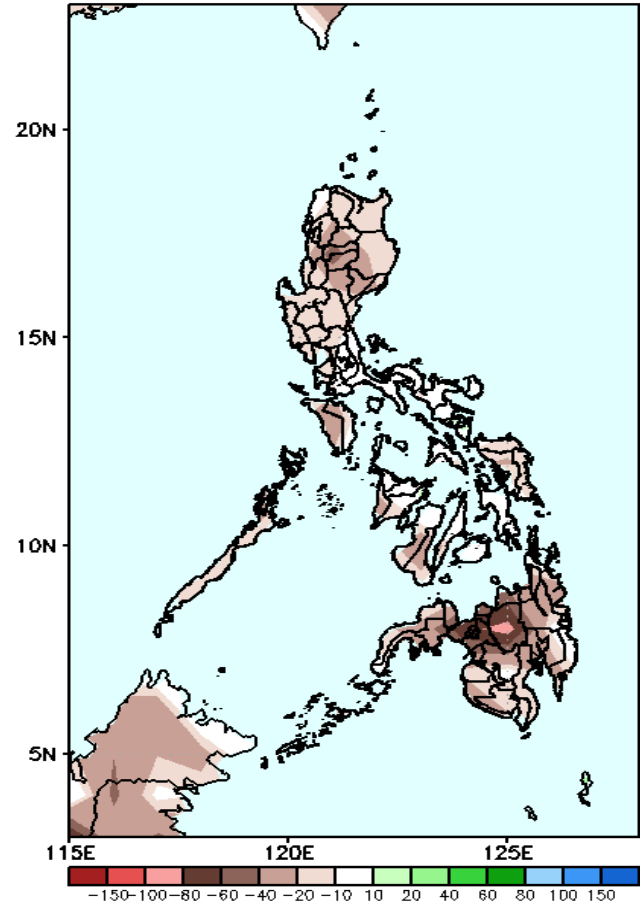


Upper and low level Divergence suggest likelihood of light precipitation in most parts of the country except Bicol region. Northeast Monsoon affecting Extreme Northern Luzon while Easterlies affecting most parts of the country during the forecast period.

# Precipitation Anomaly and Exceedance Probability > 25/50 mm

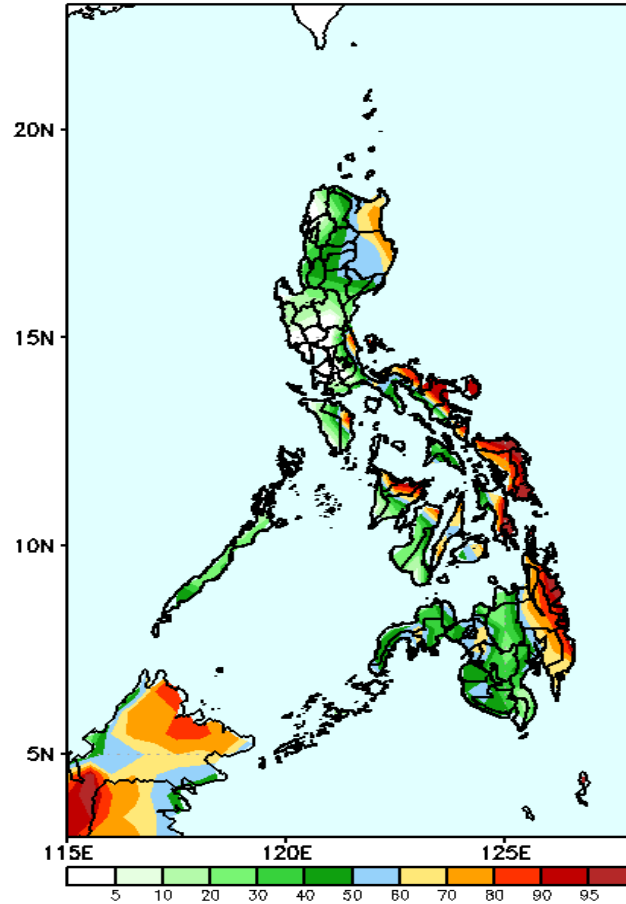
## Week 2: March 01-07, 2021

GEFS Week-2 Precip Anomaly  
Valid: 20210301 - 20210307



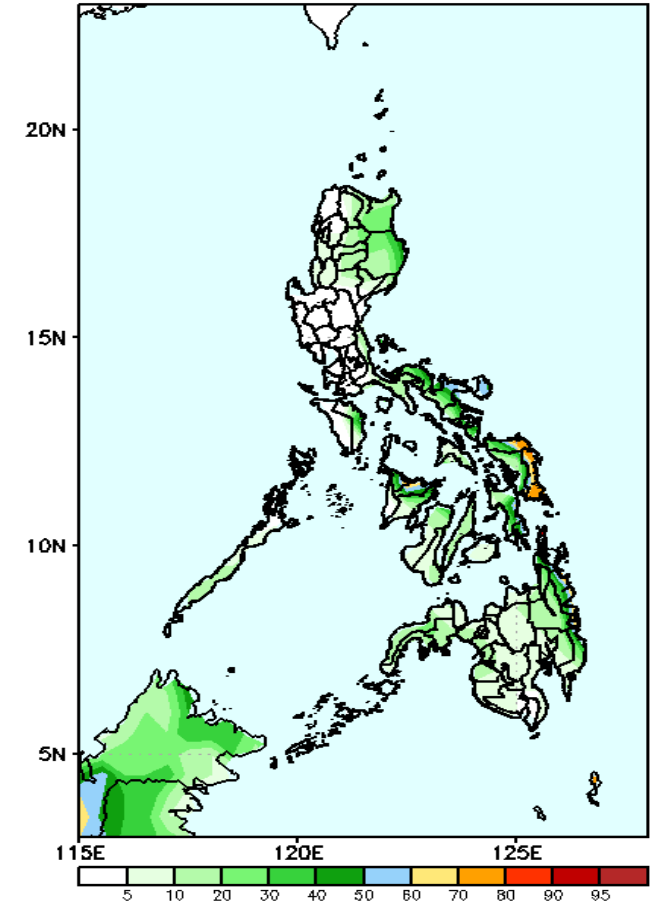
Rainfall deficit of 20-60mm in most parts of Luzon & Visayas and up to 100mm is expected in Mindanao.

GEFS Week-2 Exceedance Prob. > 25mm  
Valid: 20210301 - 20210307



High probability of rainfall to exceed 25mm in most parts of Cagayan, Isabela, northern Quezon, most of Bicol region, Western Visayas, Aklan, Capiz, CARAGA and Davao region while less likely for the remaining parts of the country Norte during the forecast period.

GEFS Week-2 Exceedance Prob. > 50mm  
Valid: 20210301 - 20210307



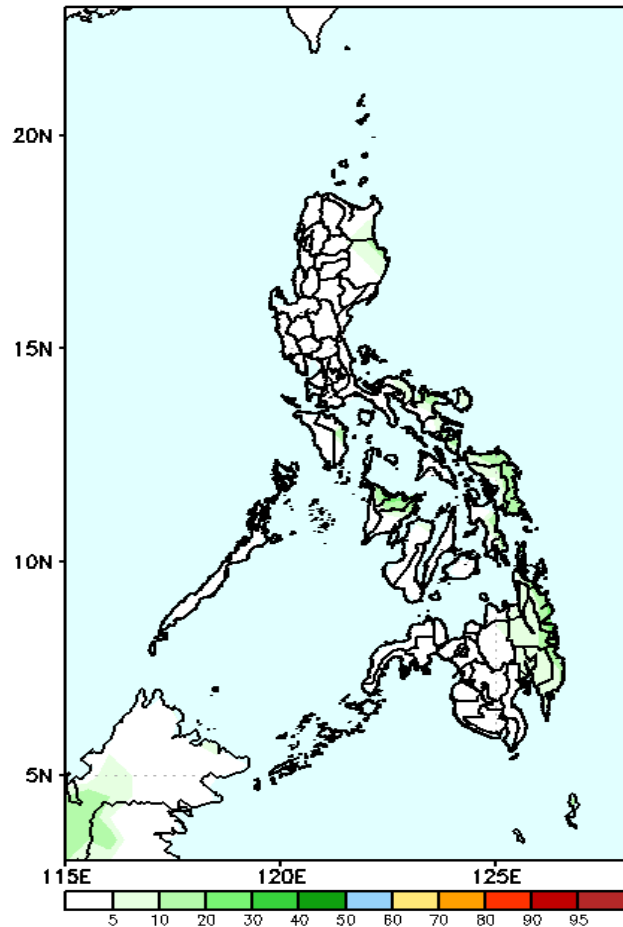
Less probability of rainfall to exceed 50mm in most parts of the country except Eastern Samar where 50mm of rainfall is most likely during the forecast period.



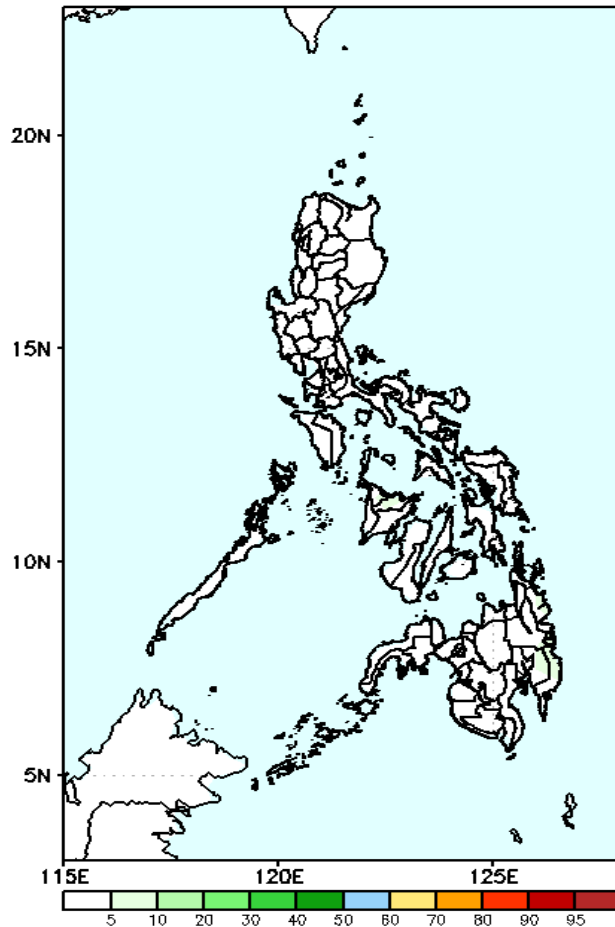
# Exceedance Probability > 100/150/200 mm

## Week 2: March 01-07, 2021

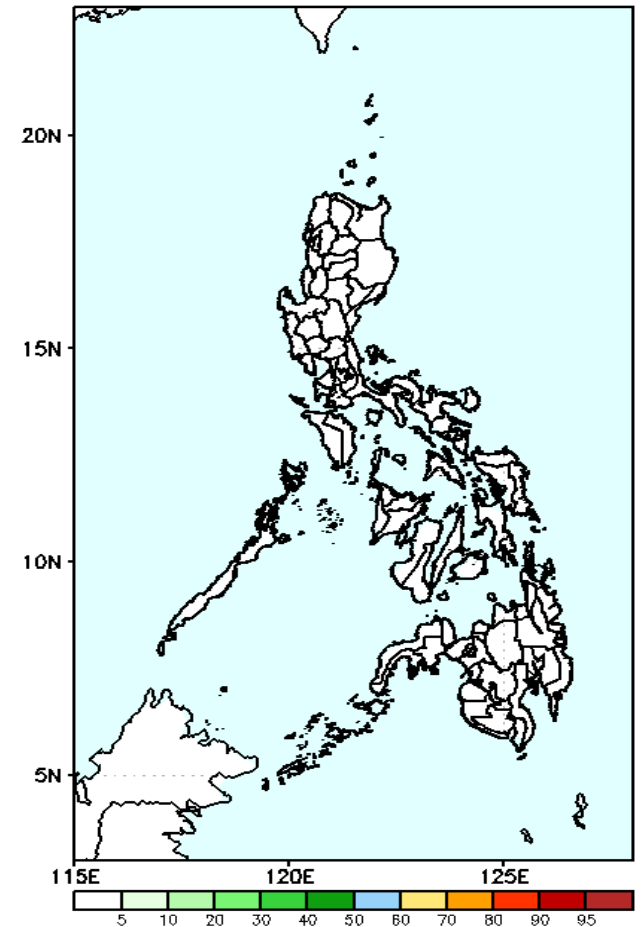
GEFS Week-2 Exceedance Prob. > 100mm  
Valid: 20210301 - 20210307



GEFS Week-2 Exceedance Prob. > 150mm  
Valid: 20210301 - 20210307



GEFS Week-2 Exceedance Prob. > 200mm  
Valid: 20210301 - 20210307



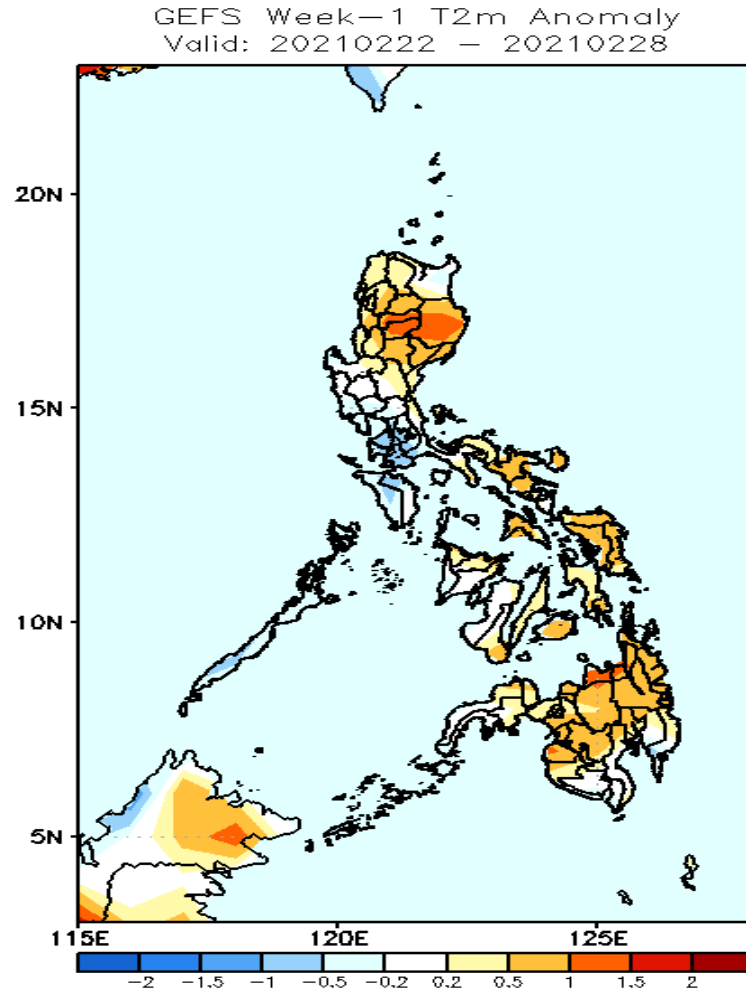
Less probability of rainfall to exceed 100mm in most parts of the country during the forecast period.

Less probability of rainfall to exceed 150mm in most parts of the country during the forecast period.

Less probability of rainfall to exceed 200mm in most parts of the country during the forecast period.

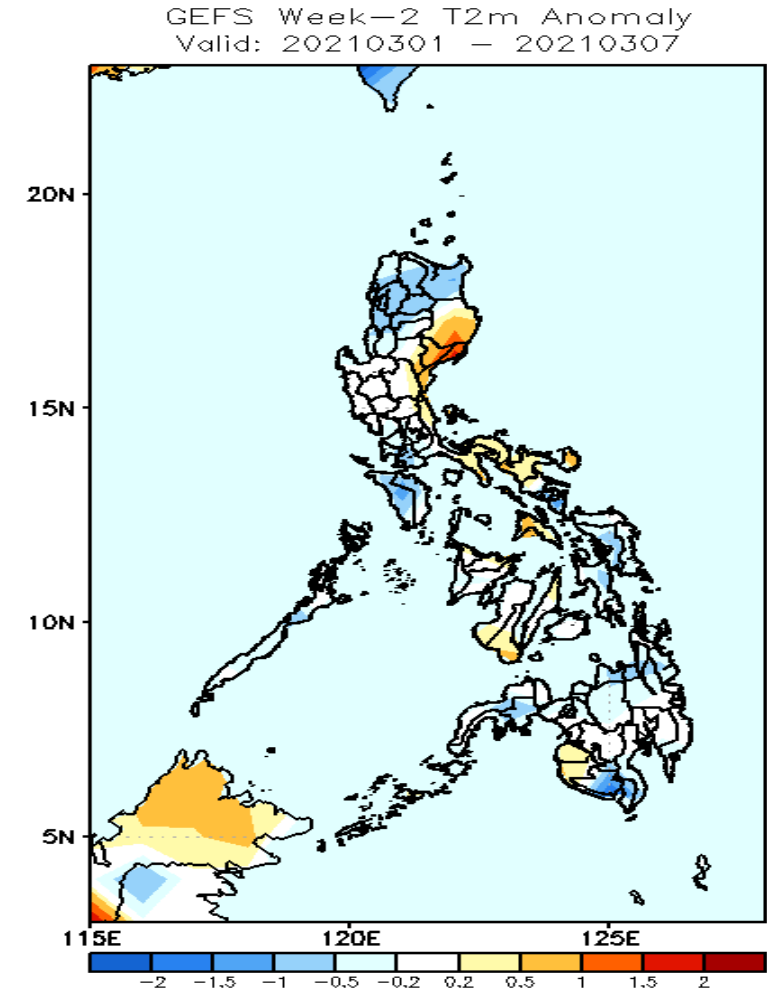


# GEFS Week-1 & 2 Forecasts: T2m Anomaly



## 2m Temperature Week 1: February 22-28, 2021

Slightly warmer to warmer than average surface air temperature is expected in Isabela, Quirino, Aurora, most parts of Cordillera Region, Bicol Region, Eastern and Central Visayas and most parts of Mindanao while average to slightly cooler than average temperature for the rest of the country during the forecast period.



## 2m Temperature Week 2: March 01-07, 2021

Slightly warmer to warmer than average surface air temperature is expected in Isabela, Quirino, Aurora and Bicol Region while average to slightly cooler than average temperature for the rest of the country during the forecast period.