



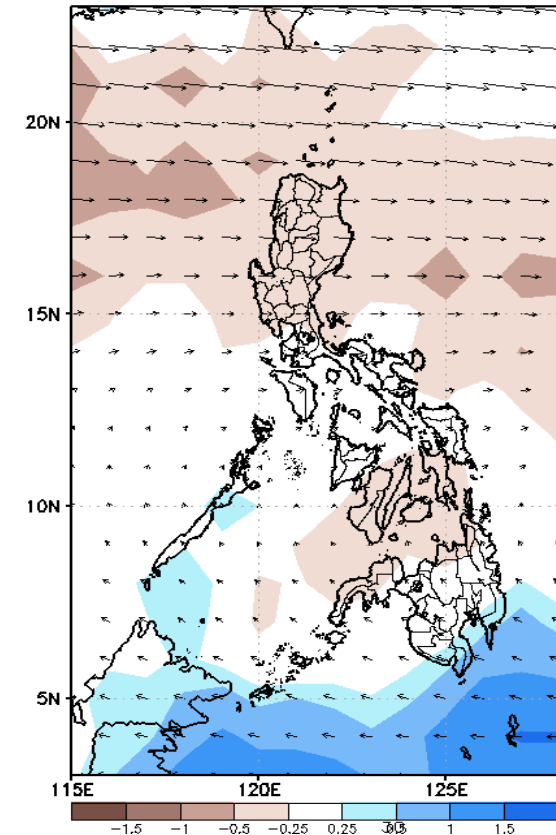
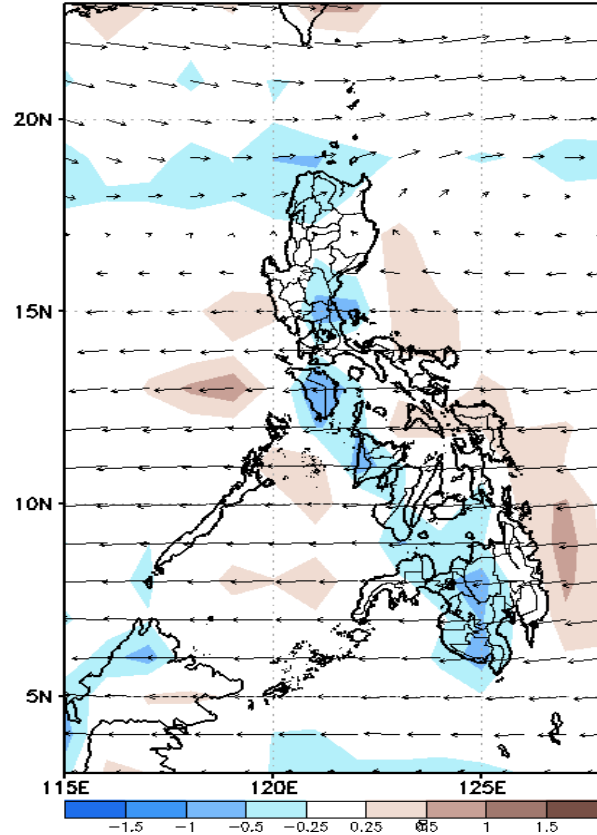
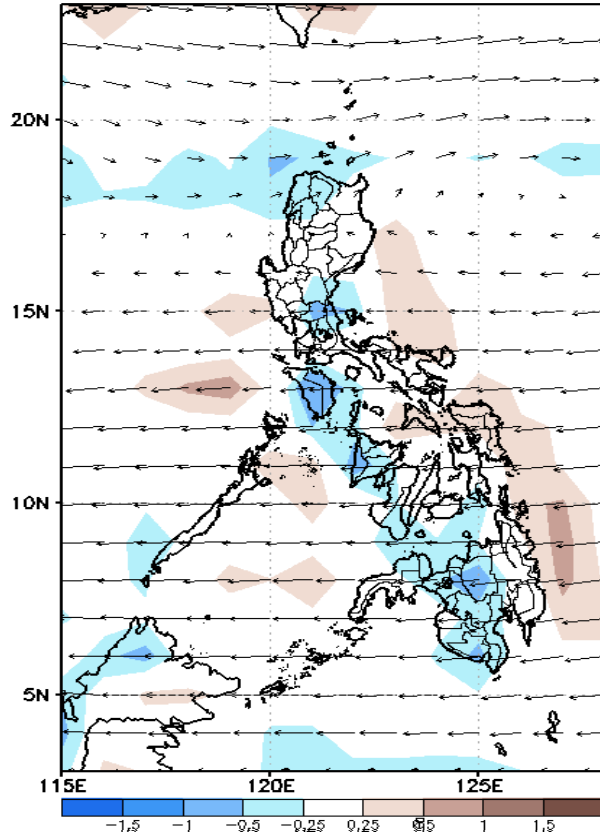
Week 1 & Week 2 Forecast for the Philippines using GEFS Model



GEFS Week-1 Forecasts: Divergence & Wind Anomaly

Week 1: March 22 - 28, 2021

GEFS Week-1 850-hPa Divergence and Wind Anomaly GEFS Week-1 700-hPa Divergence and Wind Anomaly GEFS Week-1 200-hPa Divergence and Wind Anomaly
Valid: 20210322 - 20210328 Valid: 20210322 - 20210328 Valid: 20210322 - 20210328

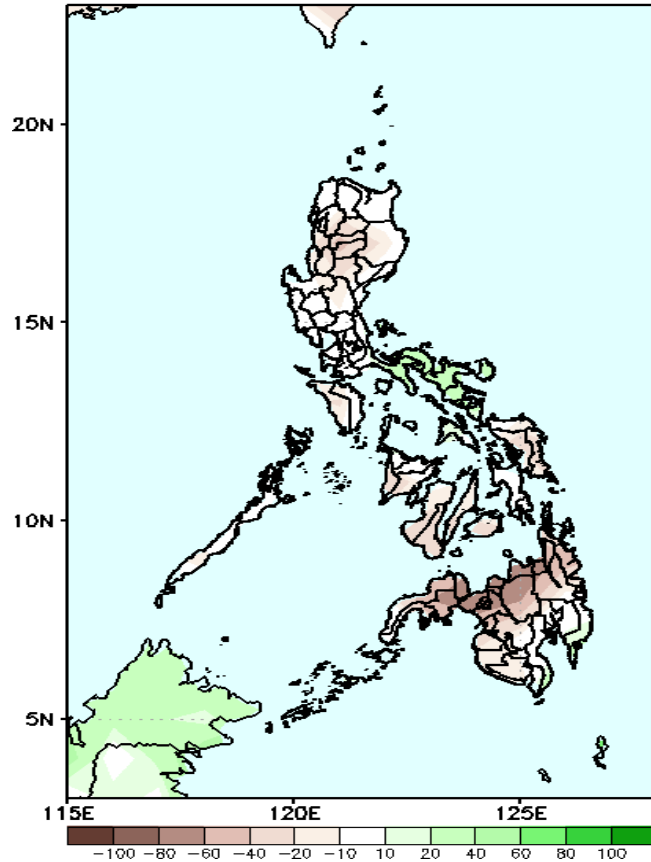


Upper and low level Divergence suggest likelihood of precipitation in Ilocos Norte, Nueva Ecija, Bulacan, Mindoro provinces, Western Visayas and Western and Central Mindanao. most parts of Luzon. Northeast Monsoon affecting Northern and Central Luzon. Easterlies affecting most parts of the country during the forecast period.

Precipitation Anomaly and Exceedance Probability > 25/50 mm

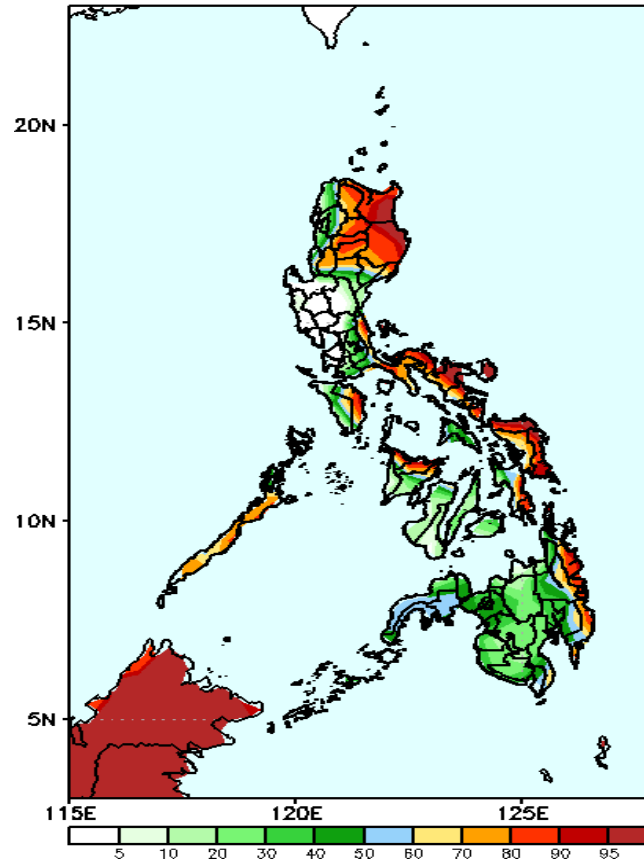
Week 1: March 22 - 28, 2021

GEFS Week-1 Precip Anomaly
Valid: 20210322 - 20210328



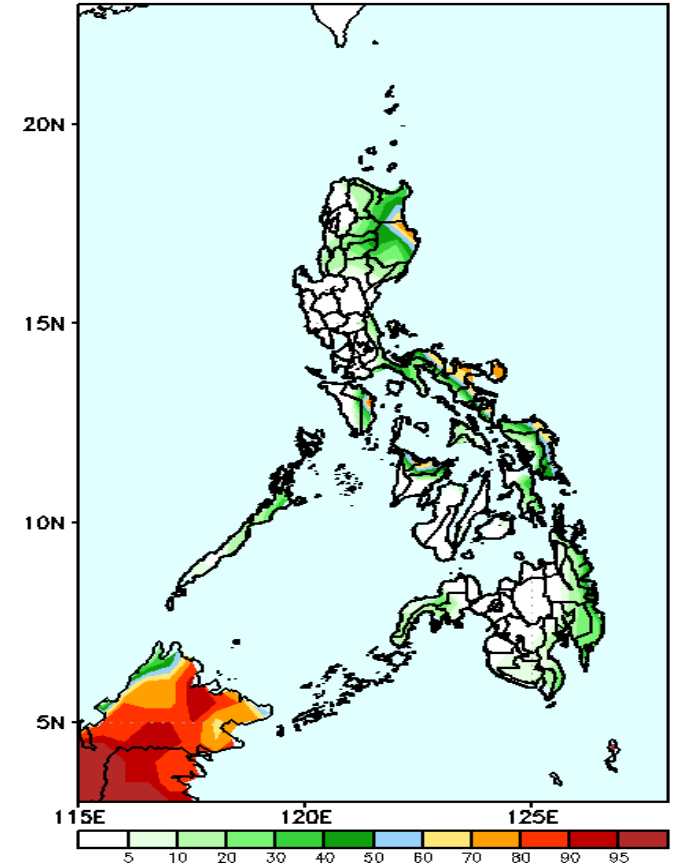
Rainfall deficit of up to 80mm is expected in most parts of the country except in Bicol region where increase of rainfall of up to 70mm is more likely.

GEFS Week-1 Exceedance Prob. > 25mm
Valid: 20210322 - 20210328



High probability of rainfall to exceed 25mm in most parts of CAR, Cagayan, Isabela, Quezon, Bicol region, Palawan, Mindoro Oriental, most of Eastern Visayas, Aklan Capiz, Surigao del Sur and Davao Oriental while less likely for the rest of the country during the forecast period.

GEFS Week-1 Exceedance Prob. > 50mm
Valid: 20210322 - 20210328

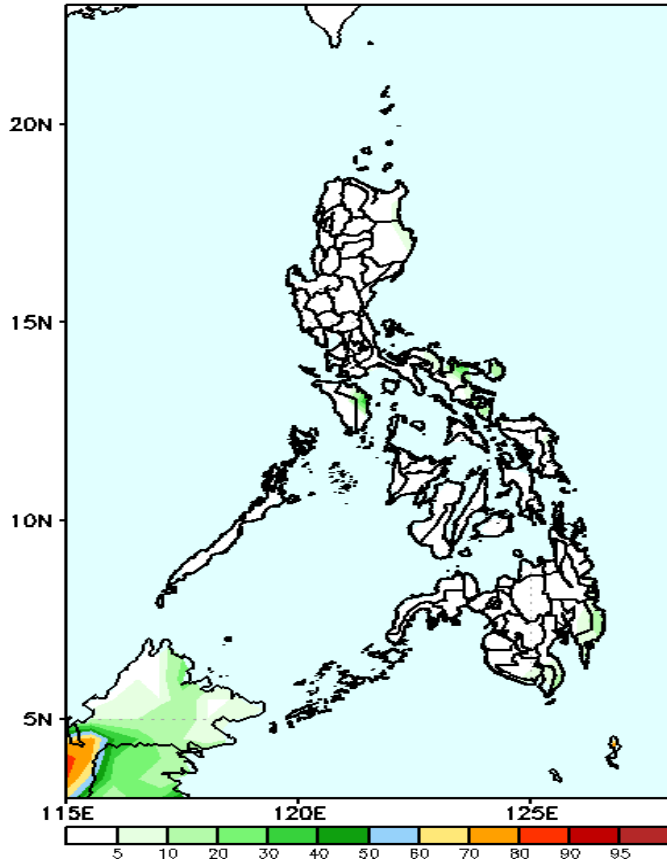


Less probability of rainfall to exceed 50mm in most parts of the country during the forecast period.

Exceedance Probability > 100/150/200 mm

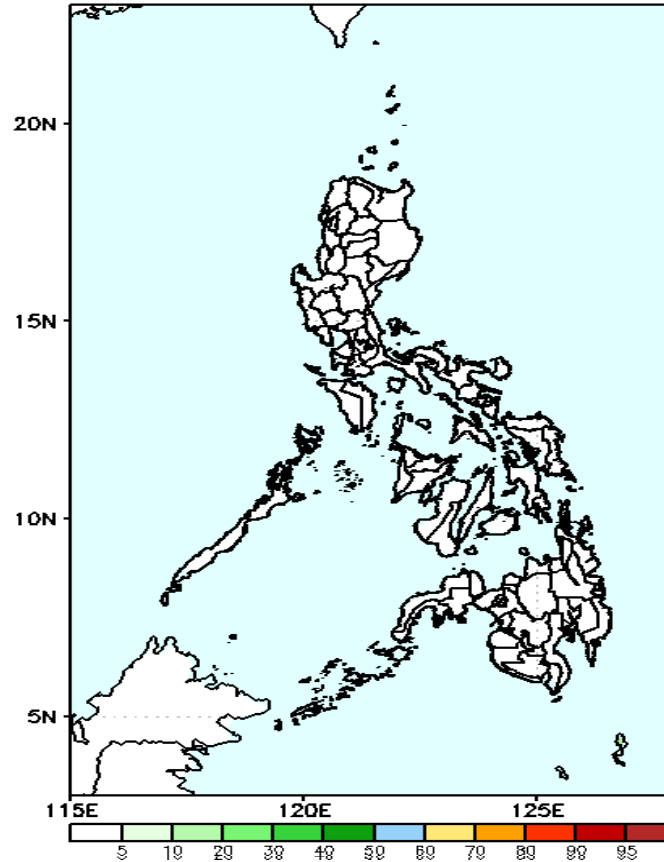
Week 1: March 22 - 28, 2021

GEFS Week-1 Exceedance Prob. > 100mm
Valid: 20210322 - 20210328



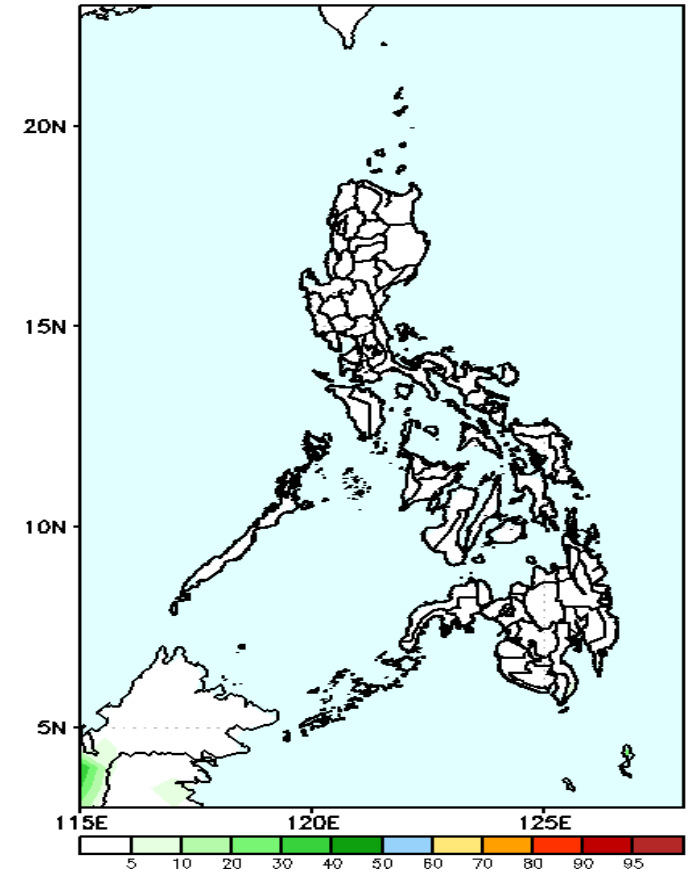
Less probability of rainfall to exceed 100mm in most parts of the country during the forecast period.

GEFS Week-1 Exceedance Prob. > 200mm
Valid: 20210322 - 20210328



Less probability of rainfall to exceed 150mm in most parts of the country during the forecast period.

GEFS Week-1 Exceedance Prob. > 150mm
Valid: 20210322 - 20210328



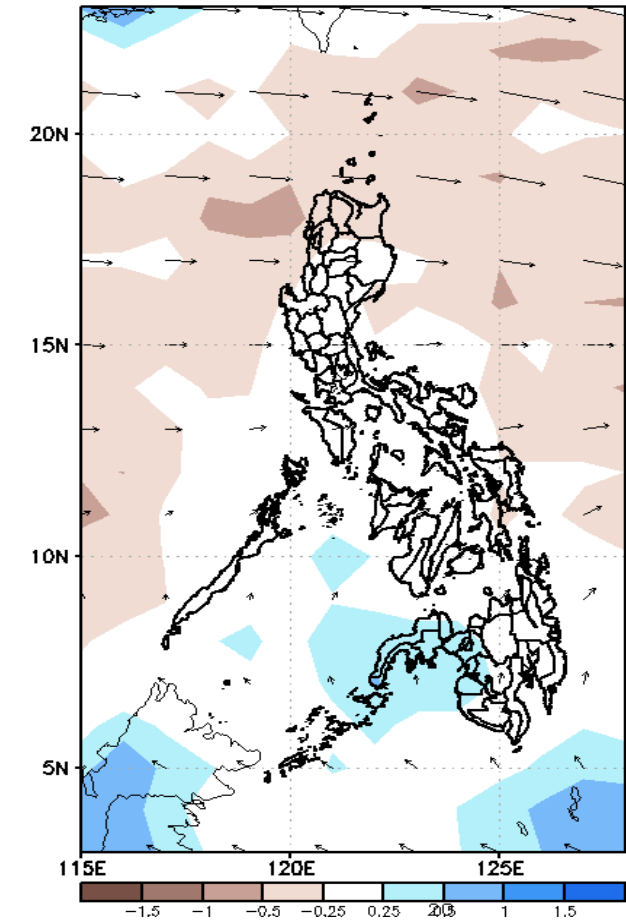
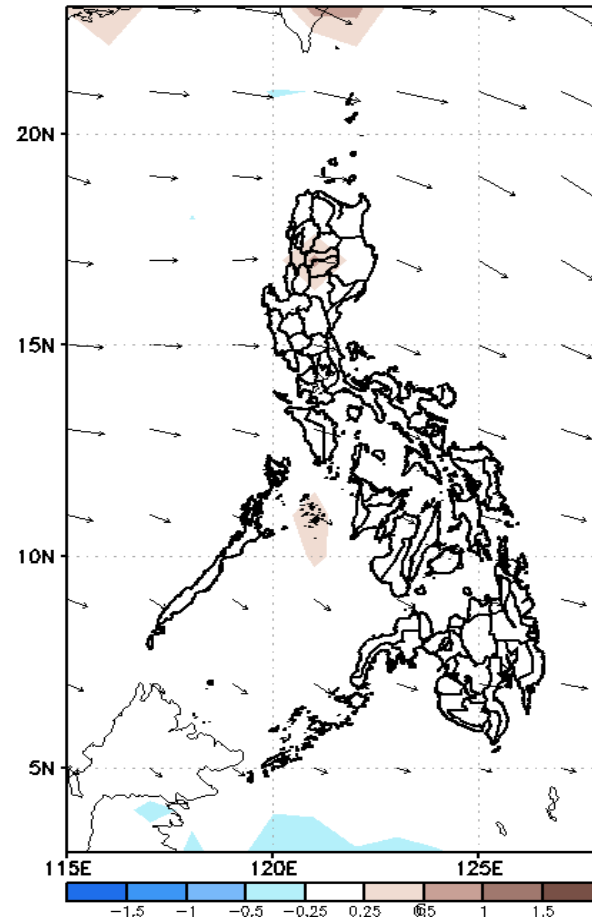
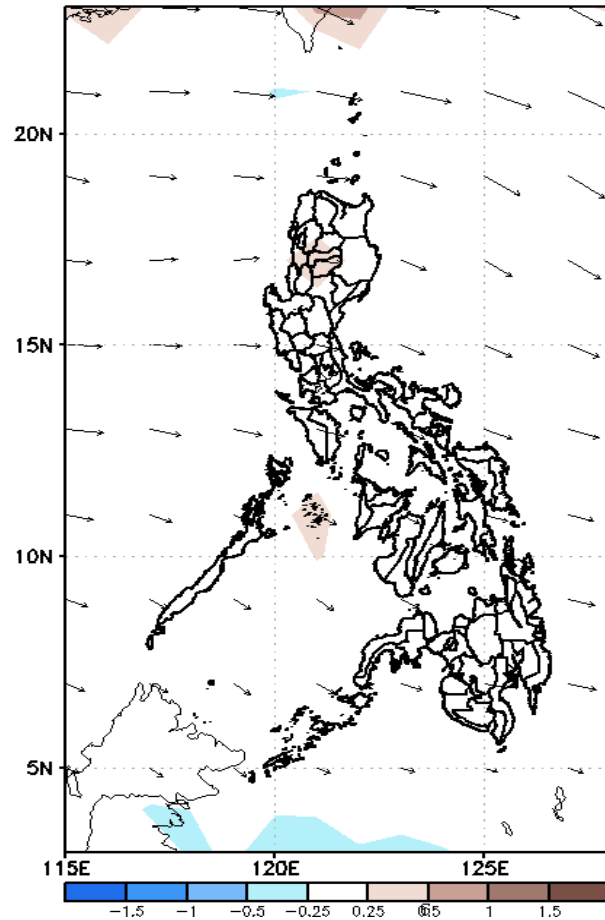
Less probability of rainfall to exceed 200mm in most parts of the country during the forecast period.



GEFS Week-2 Forecasts: Divergence & Wind Anomaly

Week 2: March 29 – April 04, 2021

GEFS Week-2 850-hPa Divergence and Wind Anomaly FS Week-2 700-hPa Divergence and Wind Anomaly EFS week-2 200-hPa Divergence and Wind Anomaly
Valid: 20210329 – 20210404 Valid: 20210329 – 20210404 Valid: 20210329 – 20210404

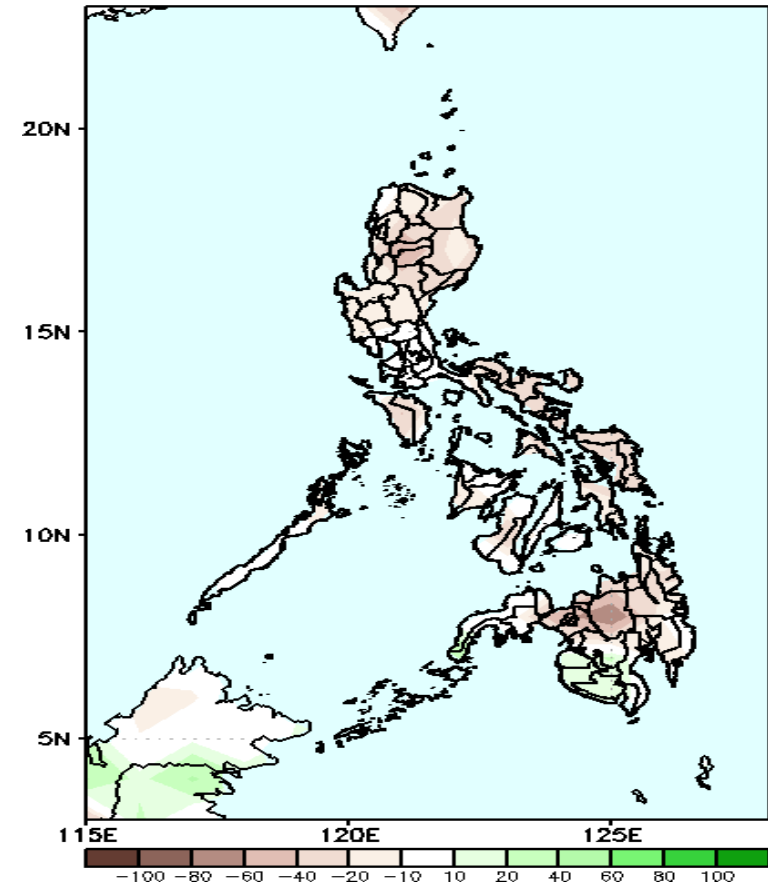


Upper and low level Divergence suggest likelihood of precipitation in Zamboanga peninsula. Easterlies affecting most parts of the country during the forecast period.

Precipitation Anomaly and Exceedance Probability > 25/50 mm

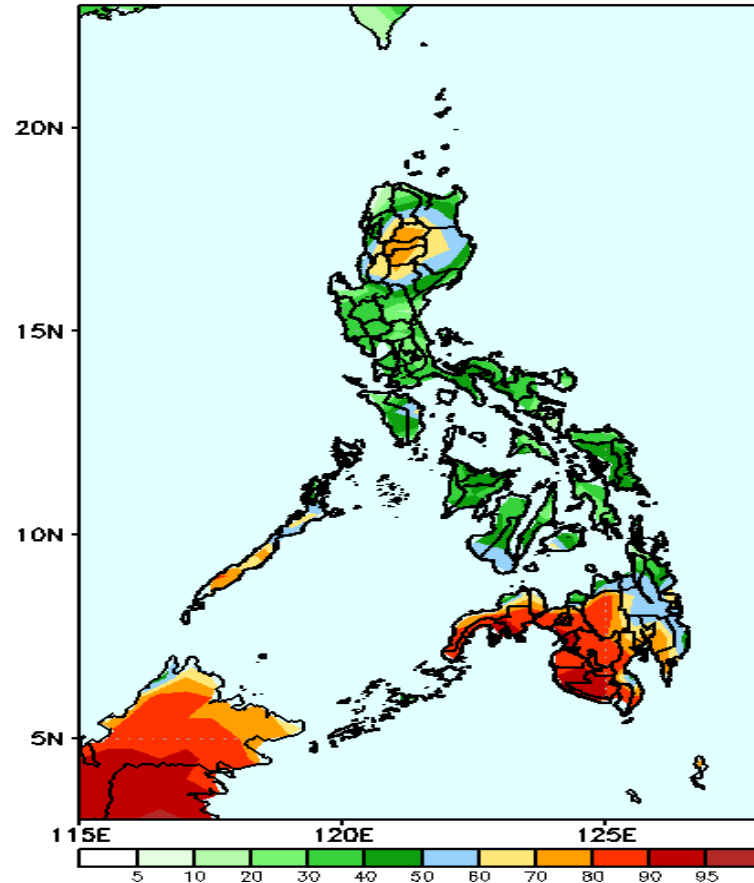
Week 2: March 29 – April 04, 2021

GEFS Week-2 Precip Anomaly
Valid: 20210329 – 20210404



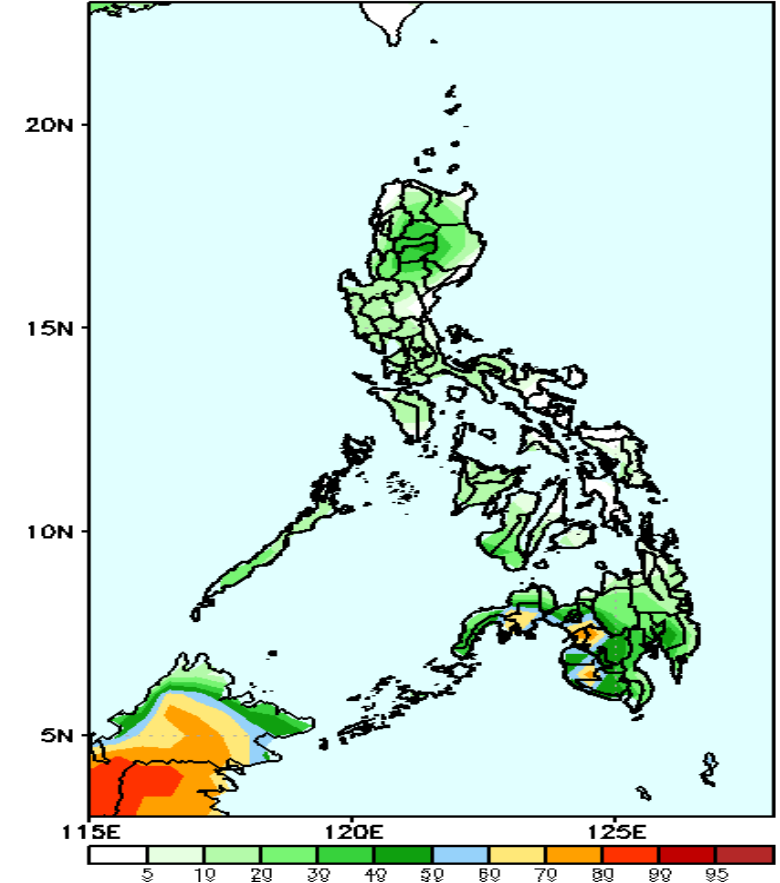
Rainfall deficit of up to 80mm is expected in most parts of the country during the forecast period.

GEFS Week-2 Exceedance Prob. > 25mm
Valid: 20210329 – 20210404



High probability of rainfall to exceed 25mm in most parts of CAR, Palawan and most parts of Mindanao while less likely for the rest of the country during the forecast period.

GEFS Week-2 Exceedance Prob. > 50mm
Valid: 20210329 – 20210404

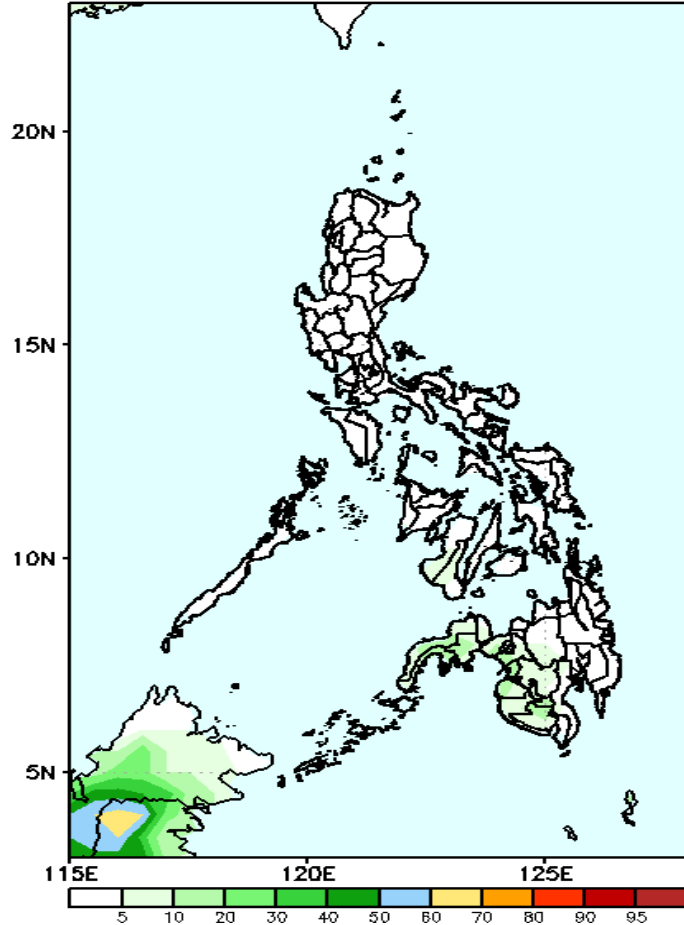


Less probability of rainfall to exceed 50mm in most parts of the country during the forecast period.

Exceedance Probability > 100/150/200 mm

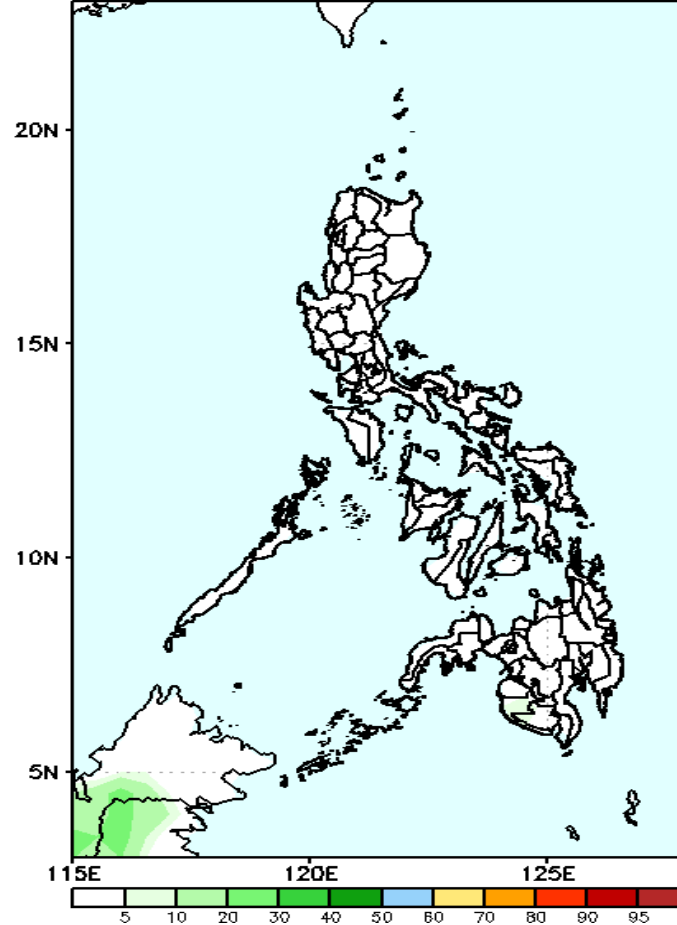
Week 2: March 29 – April 04, 2021

GEFS Week-2 Exceedance Prob. > 100mm
Valid: 20210329 – 20210404



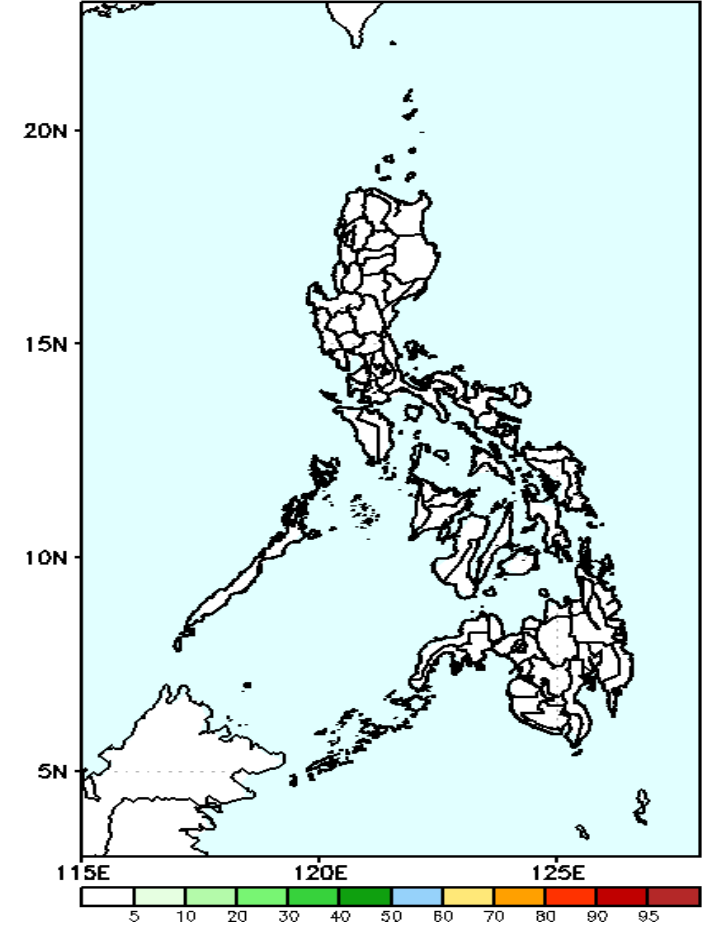
Less probability of rainfall to exceed 100mm in most parts of the country during the forecast period.

GEFS Week-2 Exceedance Prob. > 150mm
Valid: 20210329 – 20210404



Less probability of rainfall to exceed 150mm in most parts of the country during the forecast period.

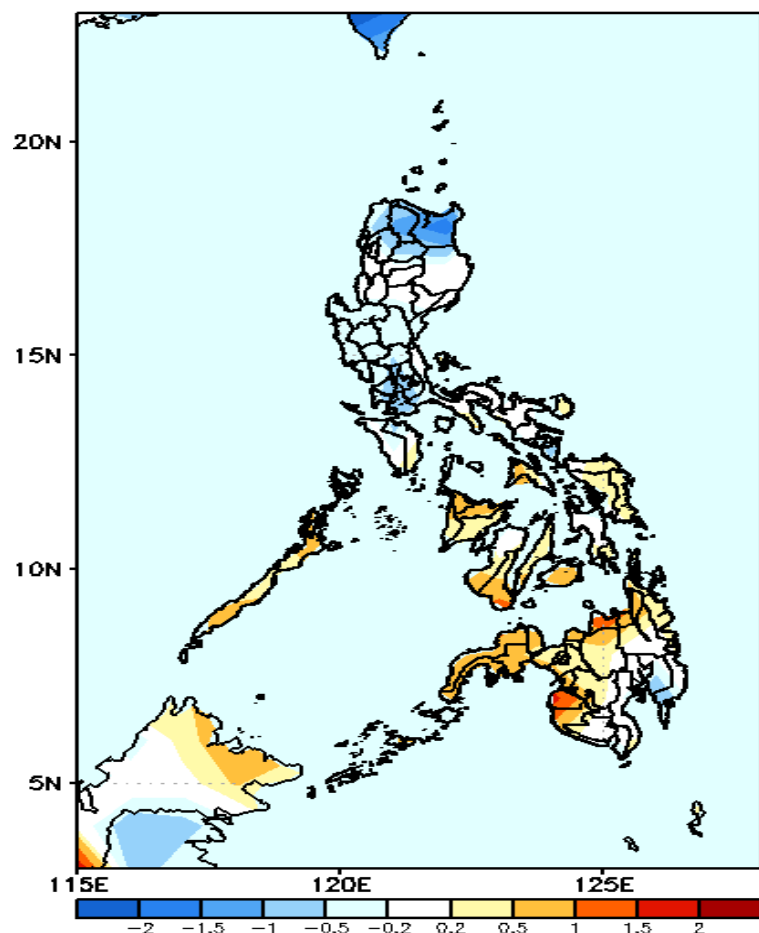
GEFS Week-2 Exceedance Prob. > 200mm
Valid: 20210329 – 20210404



Less probability of rainfall to exceed 200mm in most parts of the country during the forecast period.

GEFS Week-1 & 2 Forecasts: T2m Anomaly

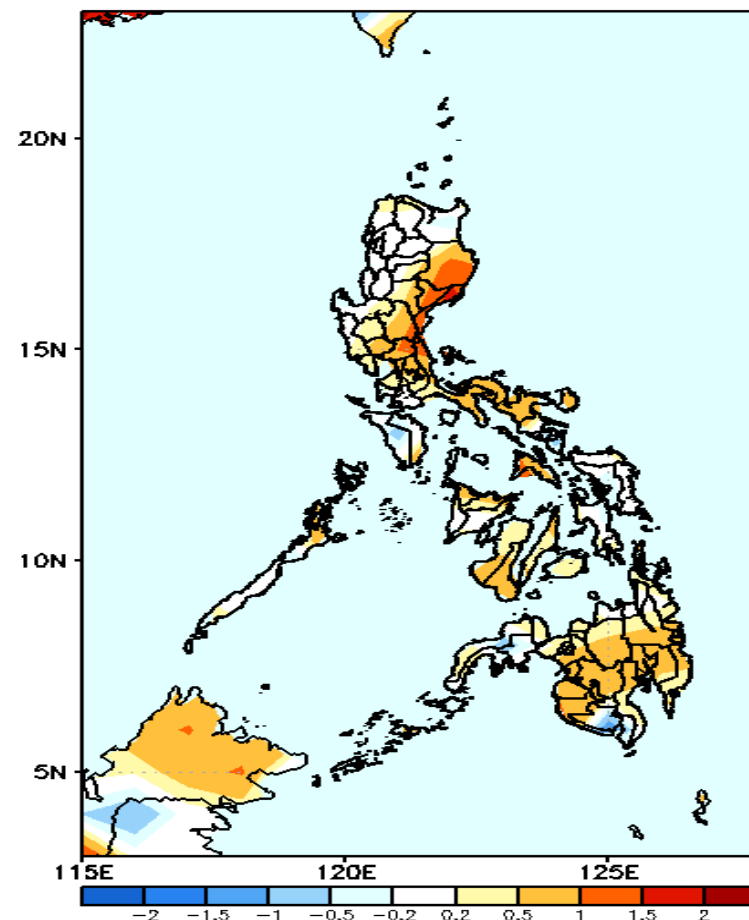
GEFS Week-1 T2m Anomaly
Valid: 20210322 – 20210328



2m Temperature Week 1: March 22 - 28, 2021

Slightly warmer to warmer than average surface air temperature will likely experience in most parts of Visayas and Mindanao is expected while cooler than average surface temperatures in northern Luzon during the forecast period.

GEFS Week-2 T2m Anomaly
Valid: 20210329 – 20210404



2m Temperature Week 2: March 29 – April 04, 2021

Slightly warmer to warmer than average surface air temperature will likely experience in most of parts of the country during the forecast period.