



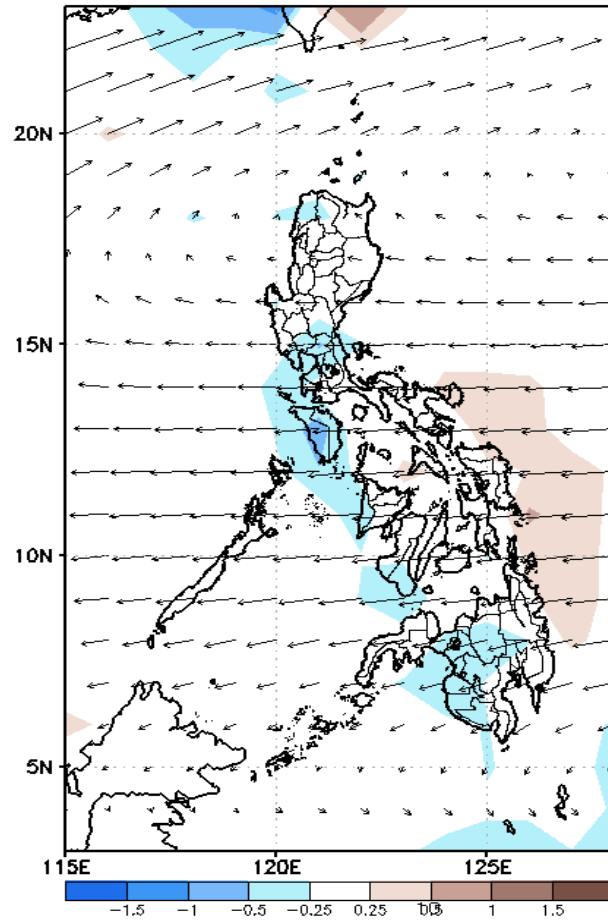
Week 1 & Week 2 Forecast for the Philippines using GEFS Model



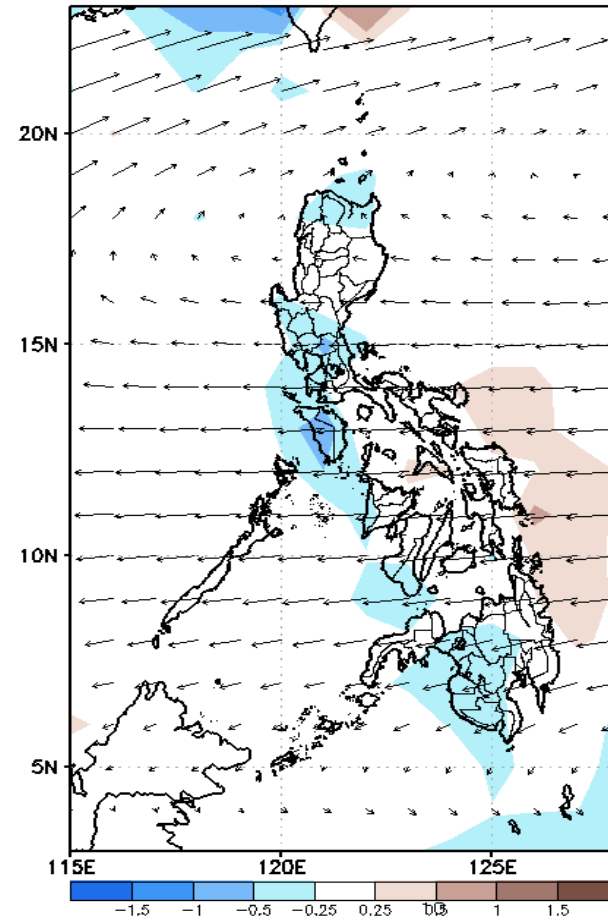
GEFS Week-1 Forecasts: Divergence & Wind Anomaly

Week 1: Mar 23-29, 2022

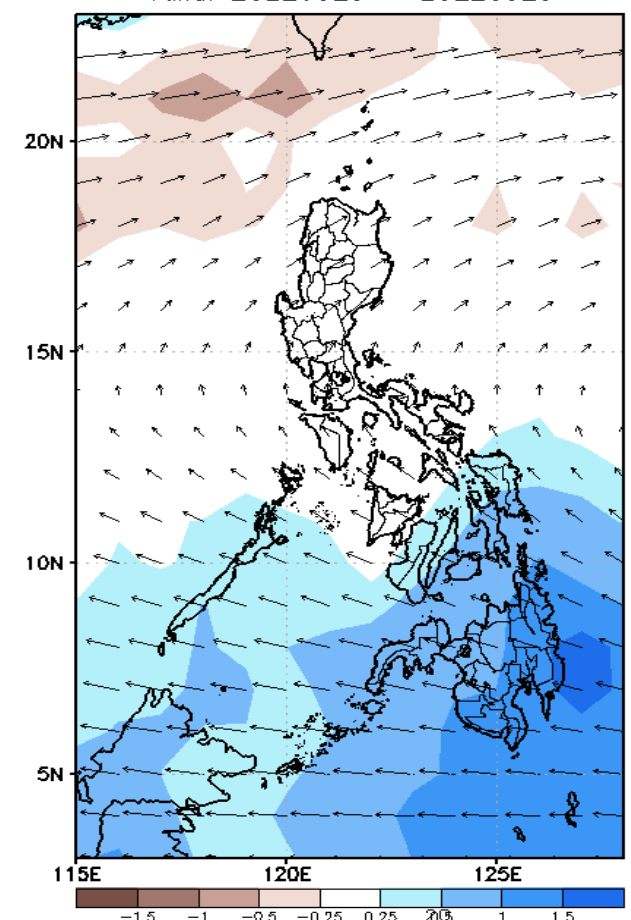
GEFS Week-1 850-hPa Divergence and Wind Anom
Valid: 20220323 - 20220329



GEFS Week-1 700-hPa Divergence and Wind Anom
Valid: 20220323 - 20220329



GEFS Week-1 200-hPa Divergence and Wind Anom
Valid: 20220323 - 20220329

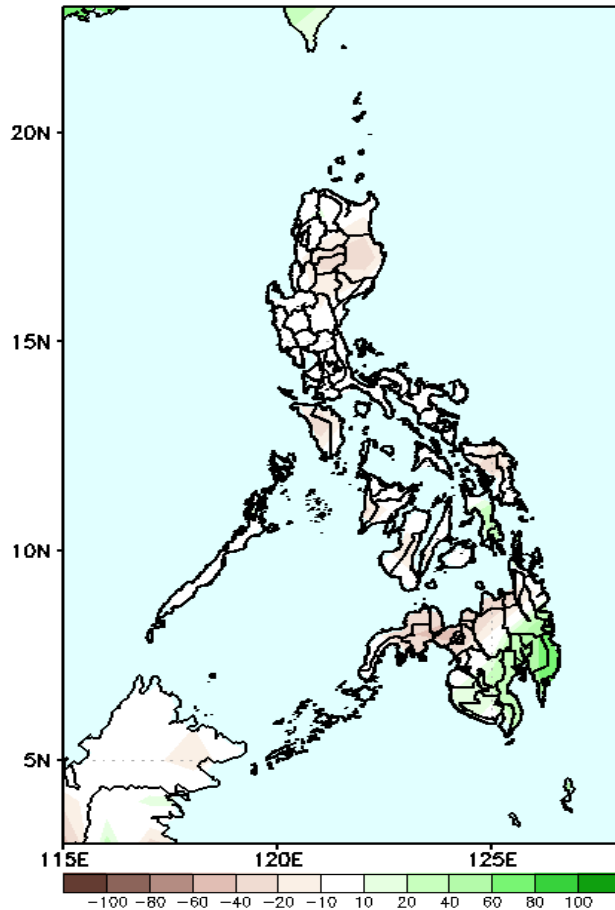


Upper and low level Divergence suggest a likelihood of light to moderate precipitation in Palawan, Eastern and Central Visayas and most parts of Mindanao. Easterlies affecting most parts of the country attributing to warmer temperatures during the forecast period.

Precipitation Anomaly and Exceedance Probability > 25/50 mm

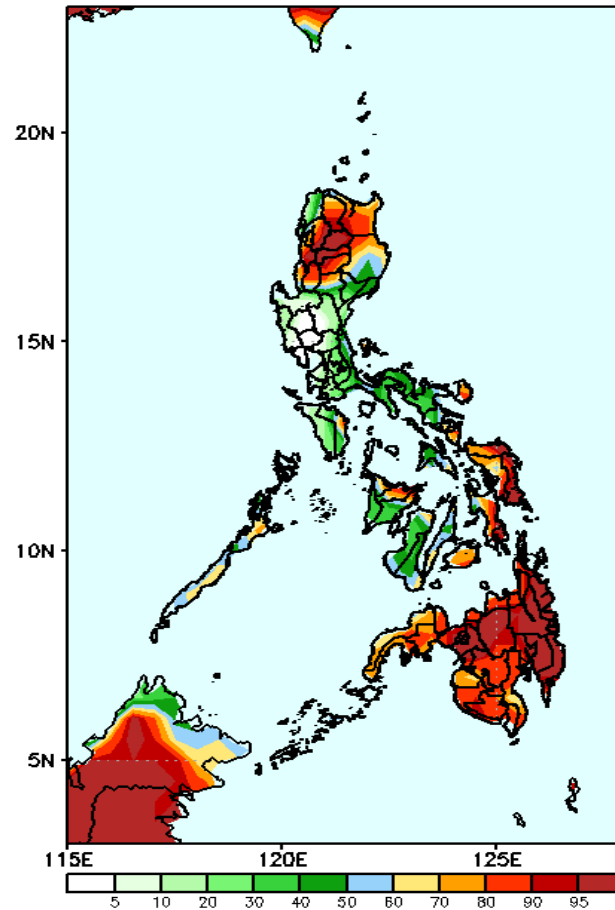
Week 1: Mar 23-29, 2022

GEFS Week-1 Precip Anomaly
Valid: 20220323 - 20220329



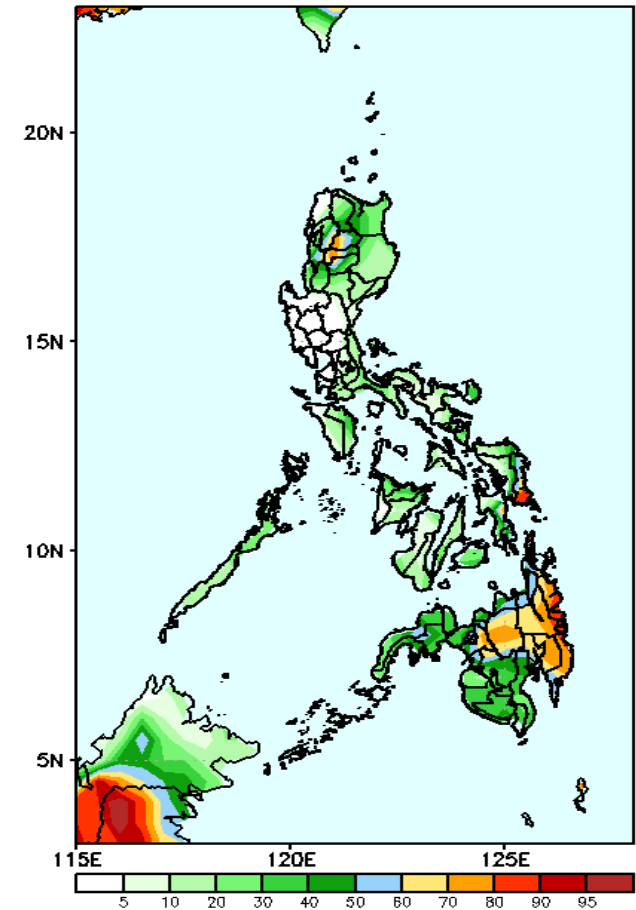
Rainfall deficit of 20-40mm is expected in most parts of the country except in Southern Mindanao with 40-60mm increase of rainfall during the forecast period.

GEFS Week-1 Exceedance Prob. > 25mm
Valid: 20220323 - 20220329



High probability of rainfall to exceed 25mm in most parts of Northern Luzon, Catanduanes, Sorsogon, Eastern Visayas, Bohol, Capiz and most parts of Mindanao while less likely for the rest of the country during the forecast period.

GEFS Week-1 Exceedance Prob. > 50mm
Valid: 20220323 - 20220329

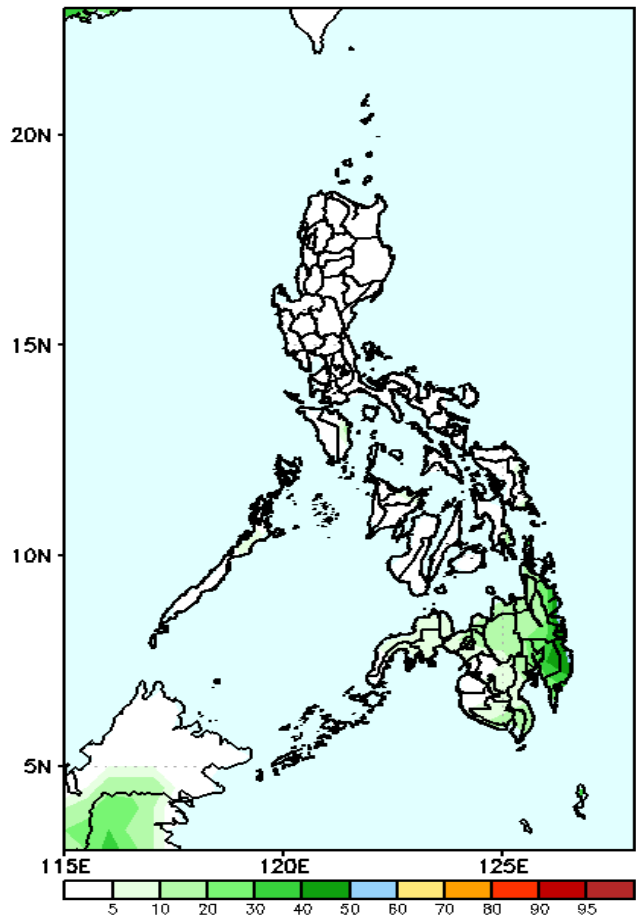


60-90% probability of rainfall to exceed 50mm in Cordillera Region, southern parts of Samar and eastern Mindanao while less likely for the rest of the country during the forecast period.

Exceedance Probability > 100/150/200 mm

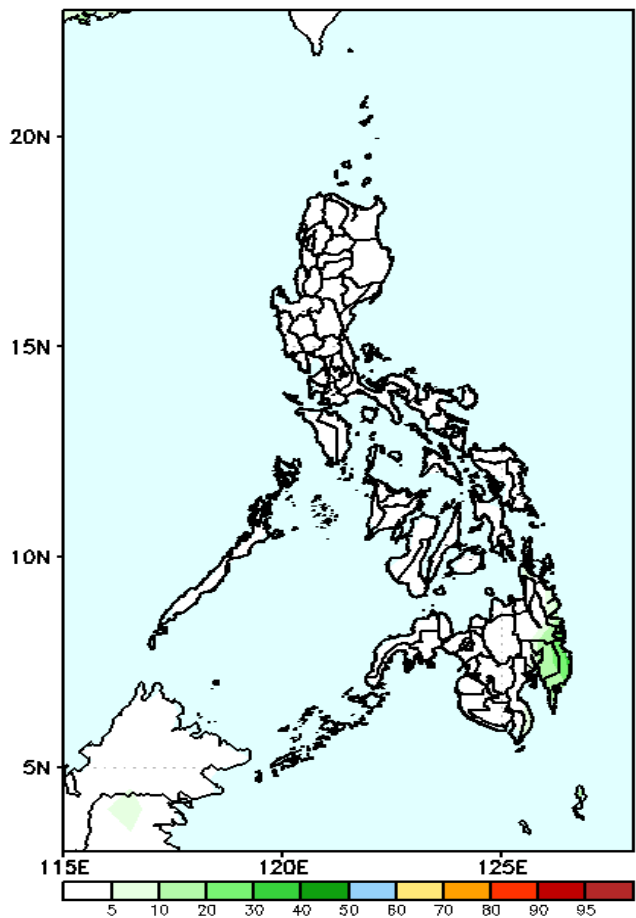
Week 1: Mar 23-29, 2022

GEFS Week-1 Exceedance Prob. > 100mm
Valid: 20220323 - 20220329



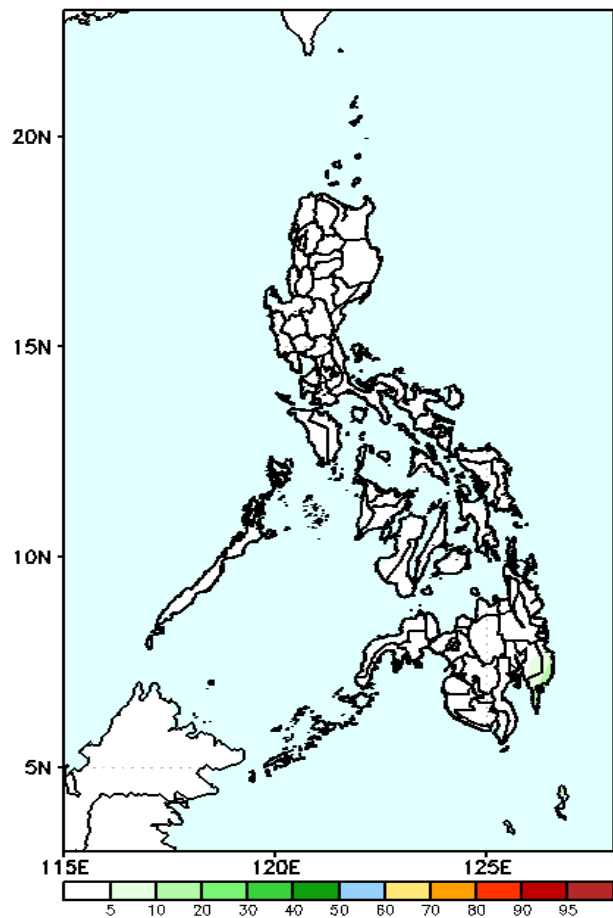
Low probability of rainfall to exceed 100mm in most parts of the country during the forecast period.

GEFS Week-1 Exceedance Prob. > 150mm
Valid: 20220323 - 20220329



Low probability of rainfall to exceed 150mm in most parts of the country during the forecast period.

GEFS Week-1 Exceedance Prob. > 200mm
Valid: 20220323 - 20220329



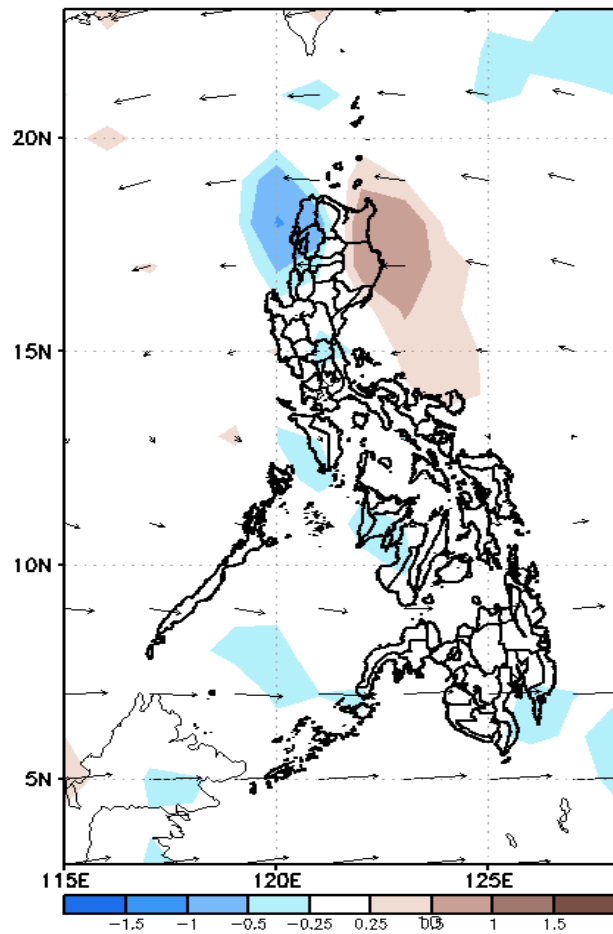
Low probability of rainfall to exceed 200mm in most parts of the country during the forecast period.



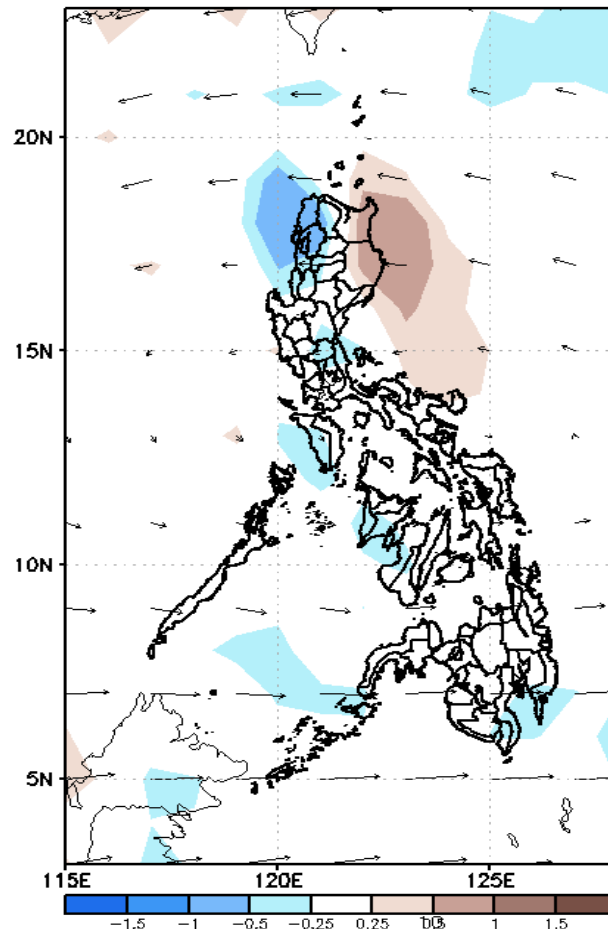
GEFS Week-2 Forecasts: Divergence & Wind Anomaly

Week 2: Mar 30- Apr 05, 2022

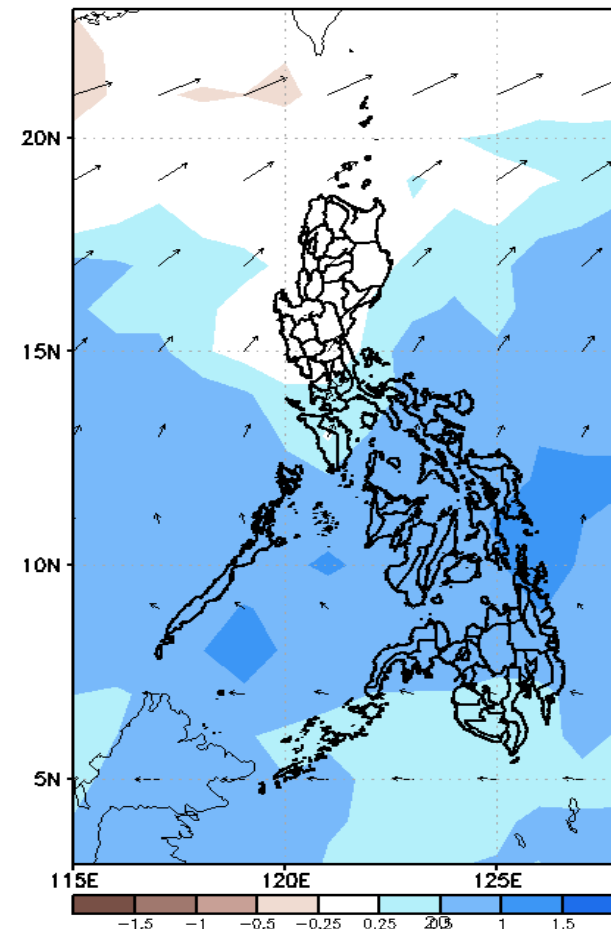
GEFS Week-2 850-hPa Divergence and Wind Anom
Valid: 20220330 - 20220405



GEFS Week-2 700-hPa Divergence and Wind Anom
Valid: 20220330 - 20220405



GEFS week-2 200-hPa Divergence and Wind Anom
Valid: 20220330 - 20220405

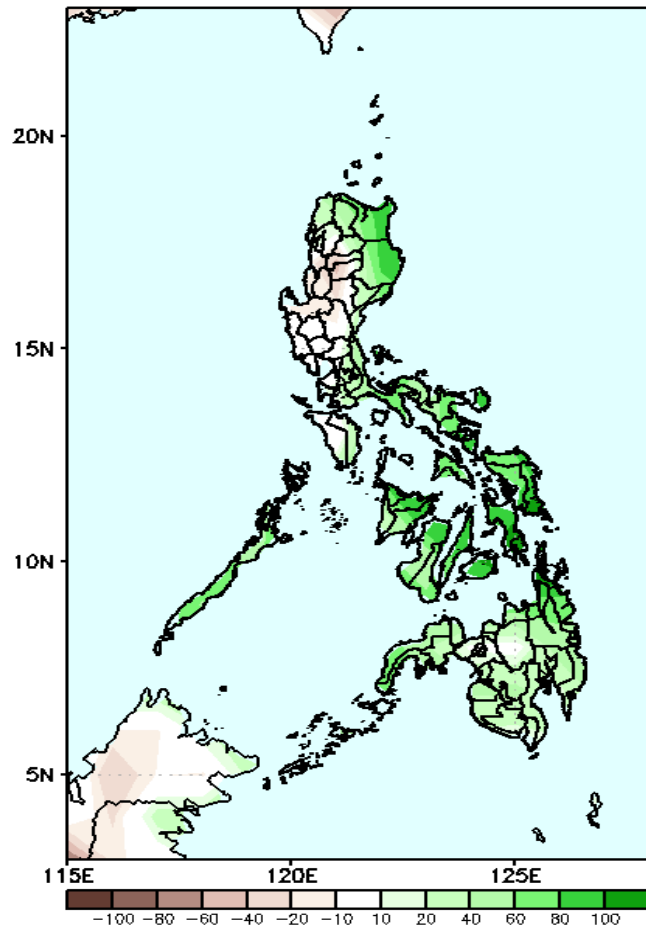


Upper and low level Divergence suggest a likelihood of light to moderate precipitation in most parts of Southern Luzon, and most parts of Visayas and Mindanao. Easterlies affecting most parts of the country attributing to warmer temperatures during the forecast period.

Precipitation Anomaly and Exceedance Probability > 25/50 mm

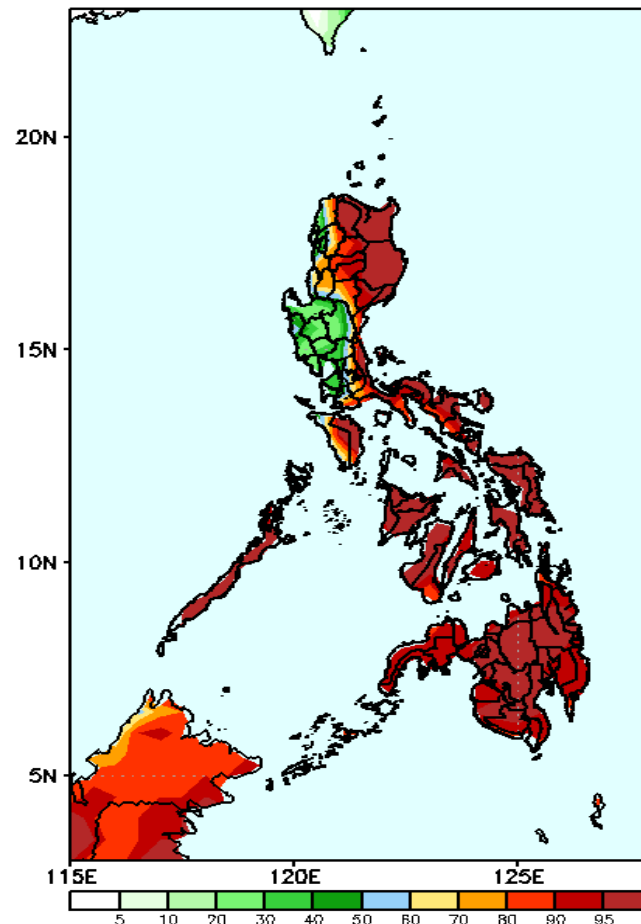
Week 2: Mar 30- Apr 05, 2022

GEFS Week-2 Precip Anomaly
Valid: 20220330 - 20220405



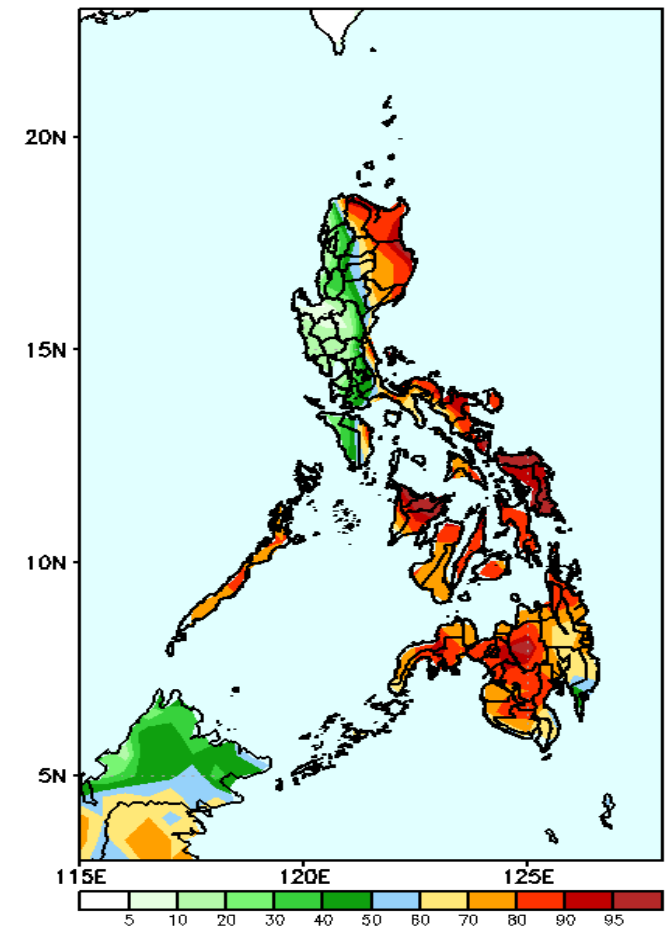
Increase of rainfall of 40-100mm in most parts of the country except in some areas in Ilocos Region & Central Luzon during the forecast period.

GEFS Week-2 Exceedance Prob. > 25mm
Valid: 20220330 - 20220405



High probability of rainfall to exceed 25mm in most parts of the country except in some areas in Pangasinan and most of Central Luzon during the forecast period.

GEFS Week-2 Exceedance Prob. > 50mm
Valid: 20220330 - 20220405

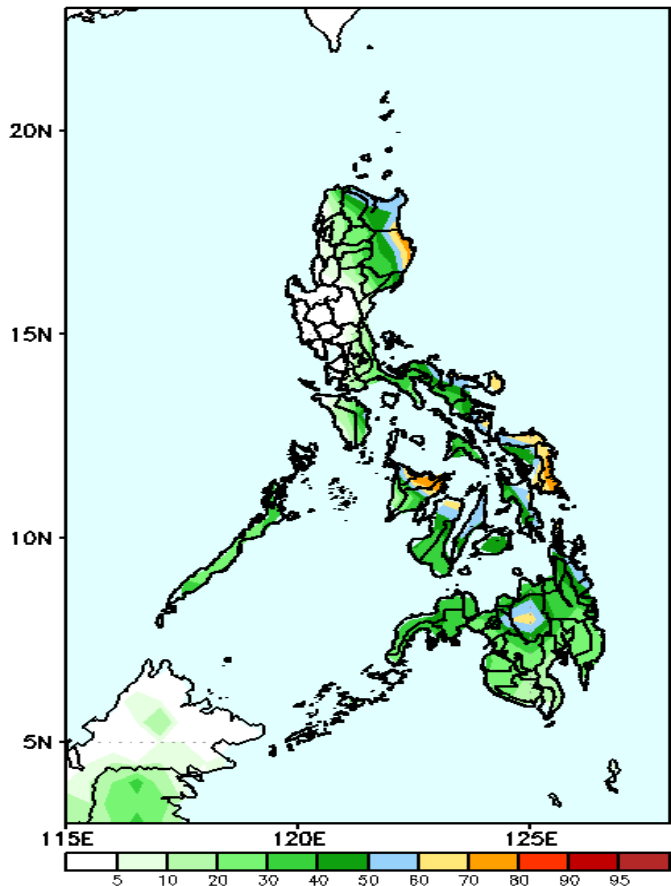


High probability of rainfall to exceed 50mm in northern & eastern parts of Luzon, Palawan, Oriental Mindoro and most parts of Visayas & Mindanao Luzon during the forecast period

Exceedance Probability > 100/150/200 mm

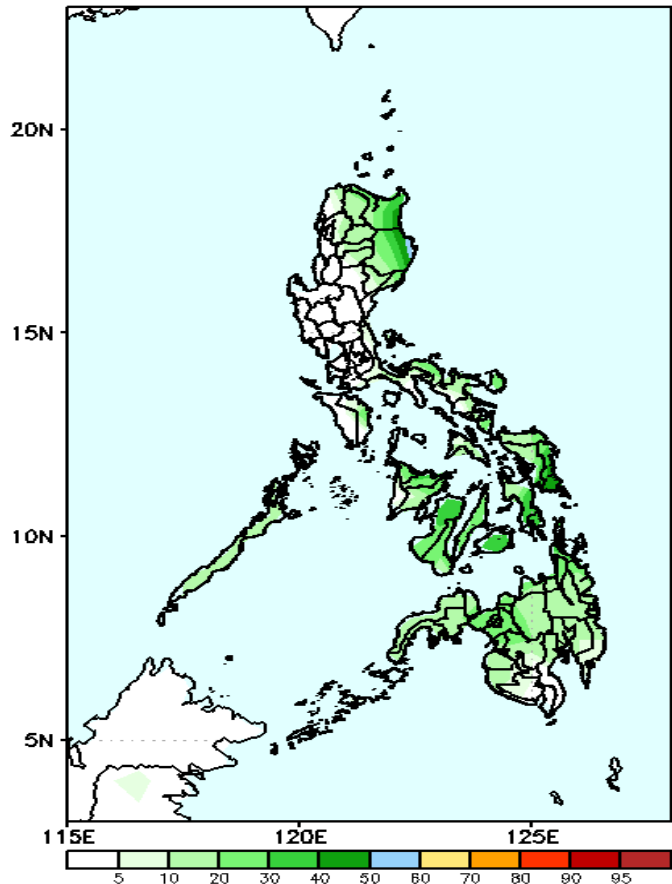
Week 2: Mar 30- Apr 05, 2022

GEFS Week-2 Exceedance Prob. > 100mm
Valid: 20220330 – 20220405



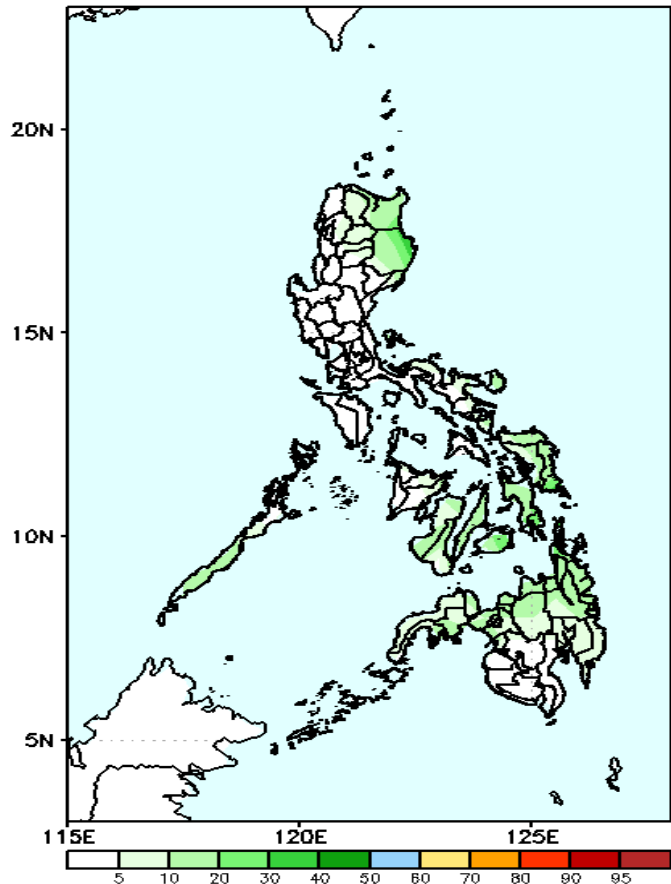
50-80% probability of rainfall to exceed 100mm in most parts of the country during the forecast period.

GEFS Week-2 Exceedance Prob. > 150mm
Valid: 20220330 – 20220405



Low probability of rainfall to exceed 150mm in most parts of the country during the forecast period.

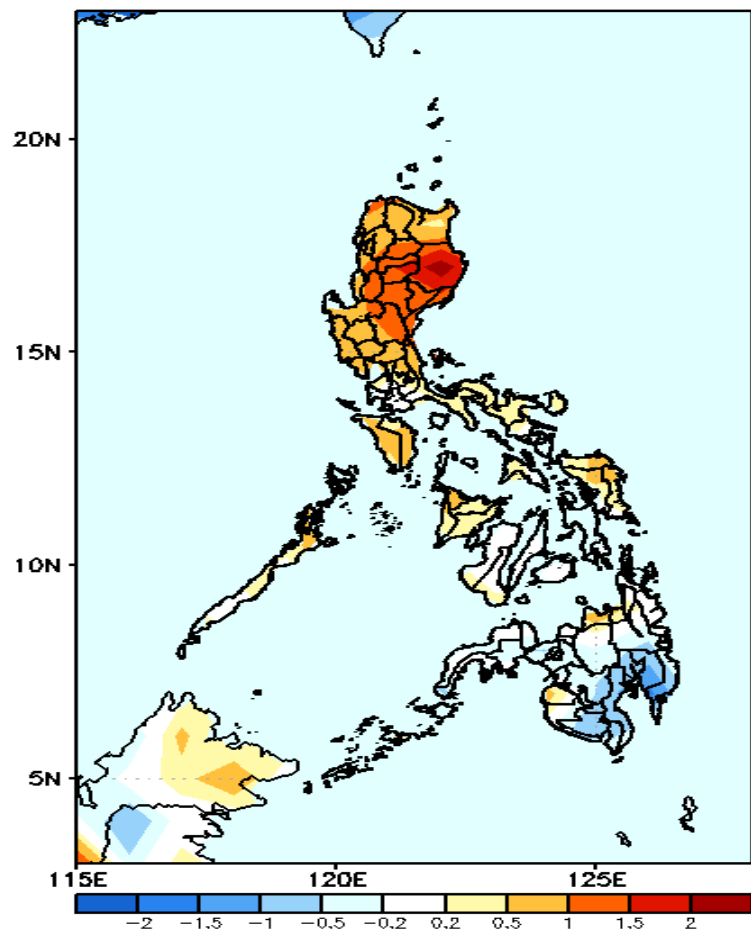
GEFS Week-2 Exceedance Prob. > 200mm
Valid: 20220330 – 20220405



Low probability of rainfall to exceed 200mm in most parts of the country during the forecast period.

GEFS Week-1 & 2 Forecasts: T2m Anomaly

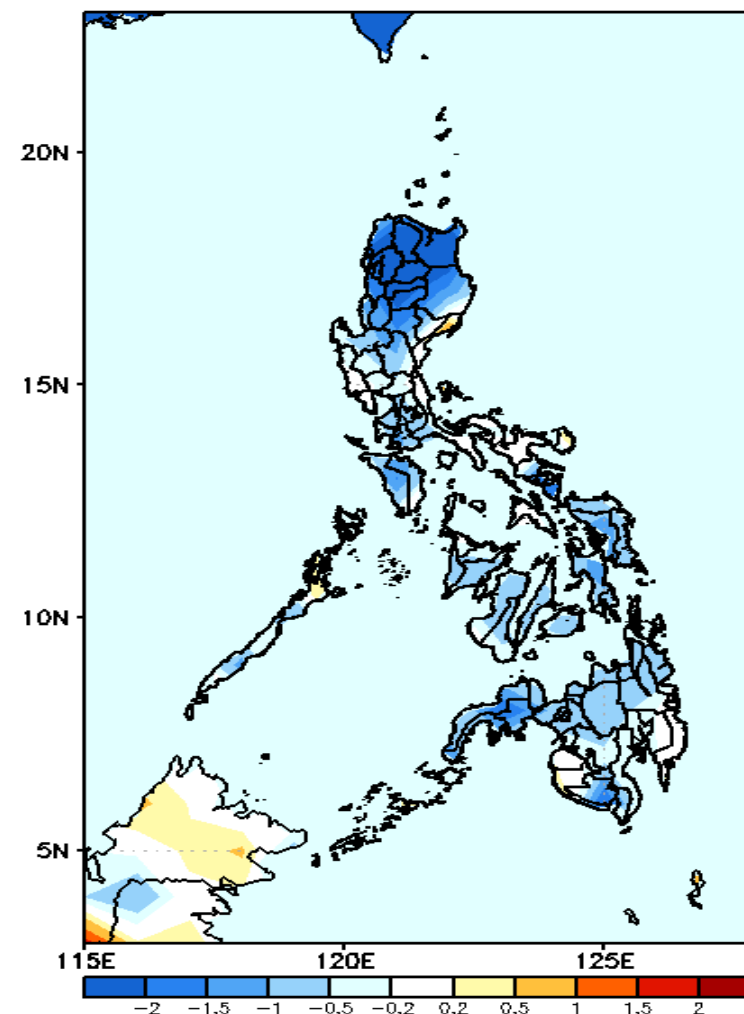
GEFS Week-1 T2m Anomaly
Valid: 20220323 – 20220329



2m Temperature Week 1: Mar 23-29, 2022

Warmer than average surface air temperature will likely experience in most parts of Luzon, slightly warmer temperature in Visayas and average to slightly cooler in Mindanao during the forecast period.

GEFS Week-2 T2m Anomaly
Valid: 20220330 – 20220405



2m Temperature Week 2: Mar 30- Apr 05, 2022

Slightly cooler to cooler than average surface air temperature will likely experience in most parts of the country during the forecast period.