



**USAID**  
FROM THE AMERICAN PEOPLE



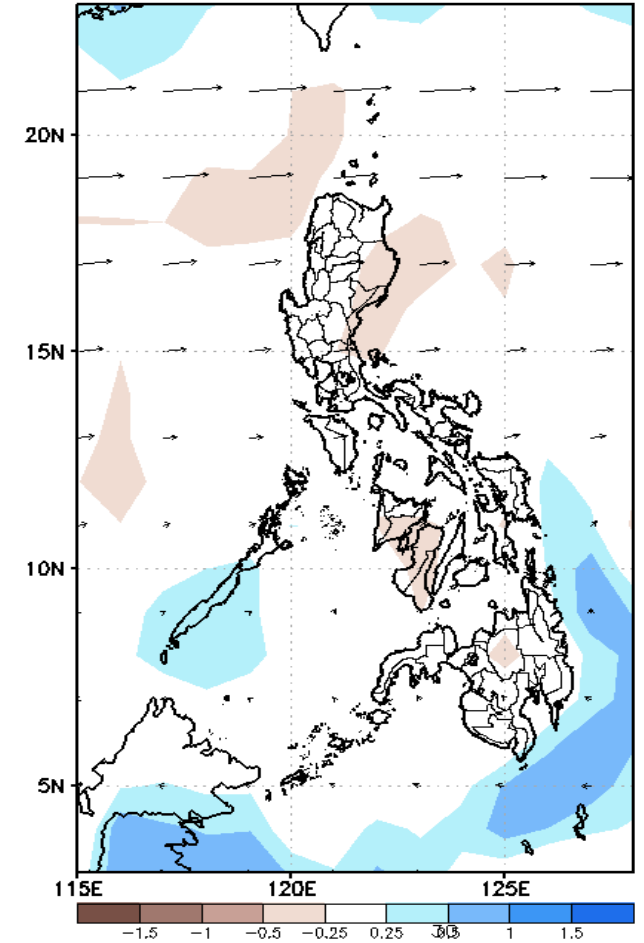
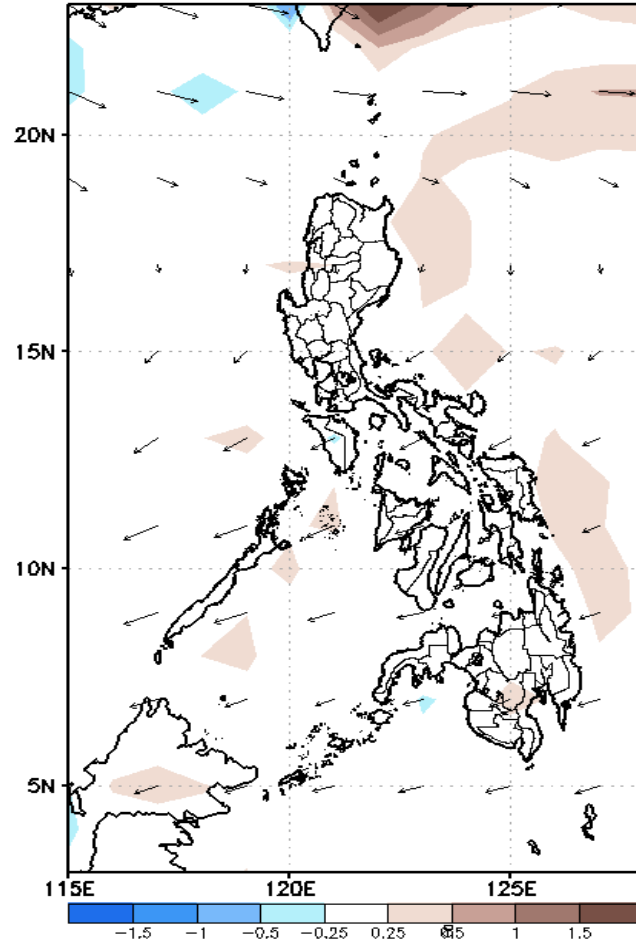
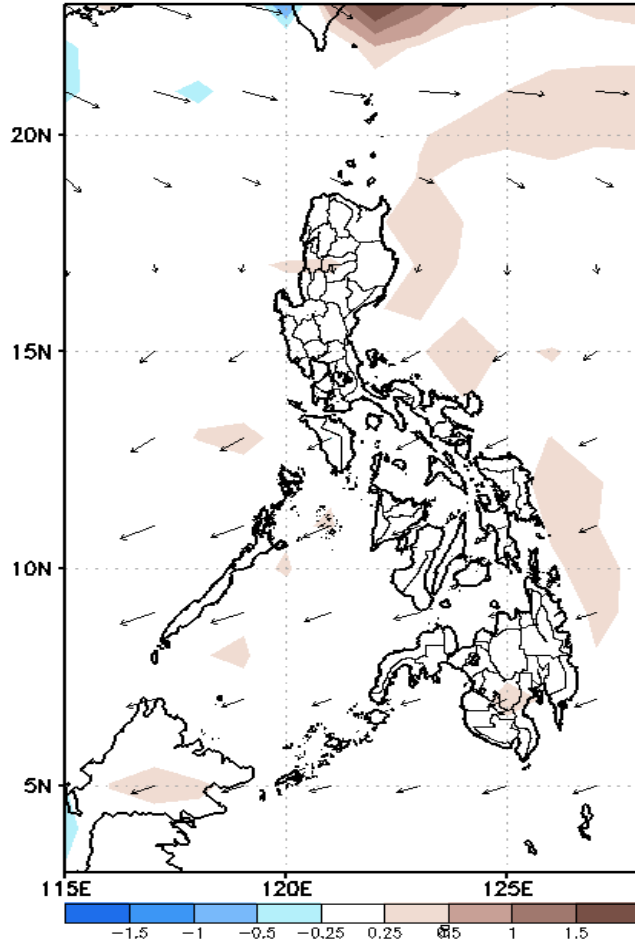
# Week 1 & Week 2 Forecast for the Philippines using GEFS Model



# GEFS Week-1 Forecasts: Divergence & Wind Anomaly

**Week 1: April 23- April 29, 2020**

GEFS Week-1 850-hPa Divergence and Wind Anom Valid: 20200423 - 20200429



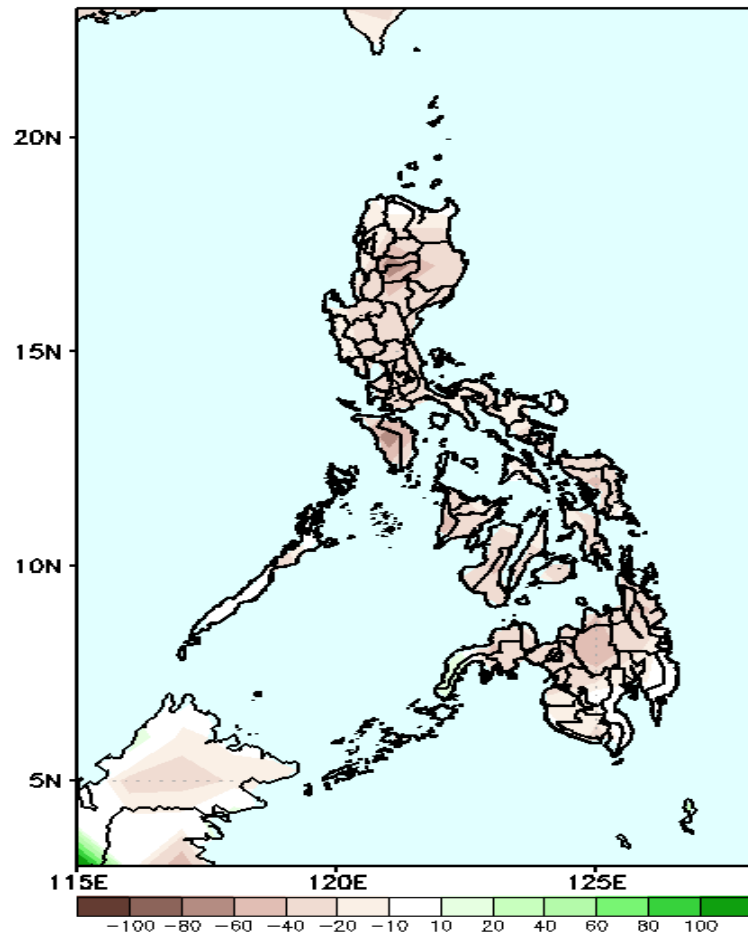
Upper level (750 hPa) Divergence suggest likelihood of precipitation in some parts of Luzon and Mindanao due to localize thunderstorm. Easterlies affecting most parts of the country during the forecast period.



# Precipitation Anomaly and Exceedance Probability > 25/50 mm

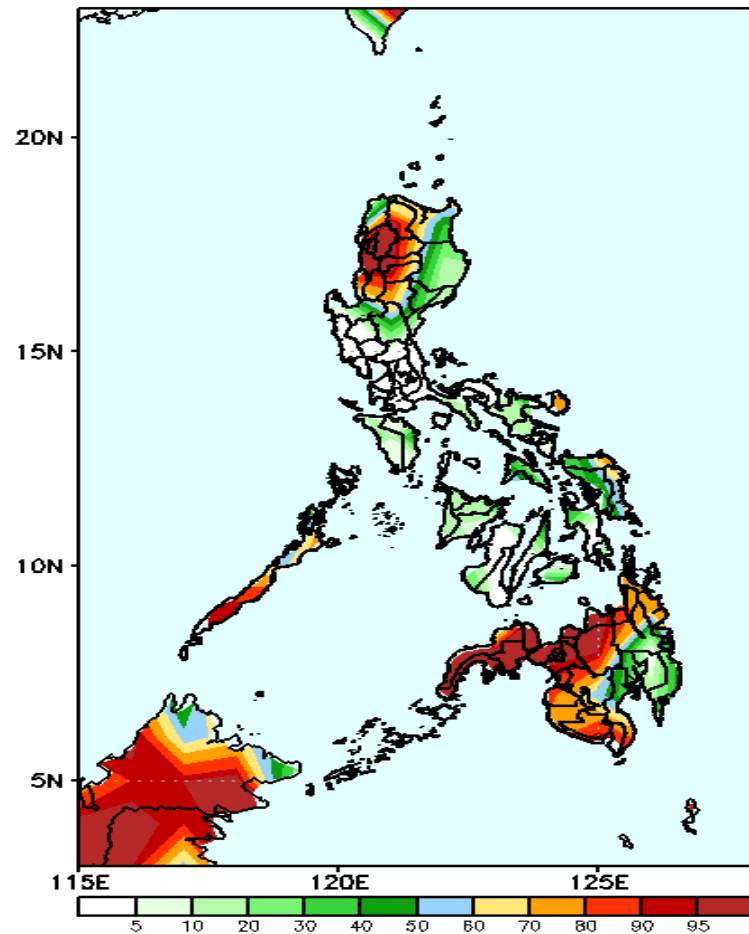
**Week 1: April 23- April 29, 2020**

GEFS Week-1 Precip Anomaly  
Valid: 20200423 - 20200429



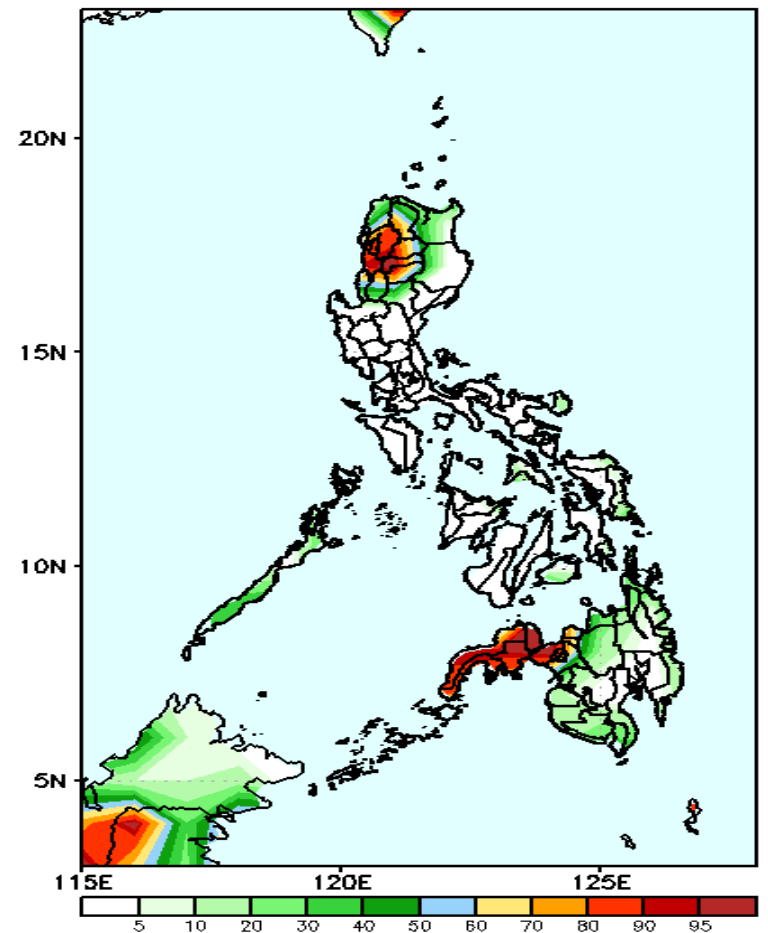
Rainfall deficit of up to 60 mm is likely in most parts of the country during the forecast period.

GEFS Week-1 Exceedance Prob. > 25mm  
Valid: 20200423 - 20200429



High probability of rainfall to exceed 25mm in northwestern Luzon, Catanduanes, eastern Samar and northern and western part of Mindanao while less likely for the rest of the country during the forecast period.

GEFS Week-1 Exceedance Prob. > 50mm  
Valid: 20200423 - 20200429

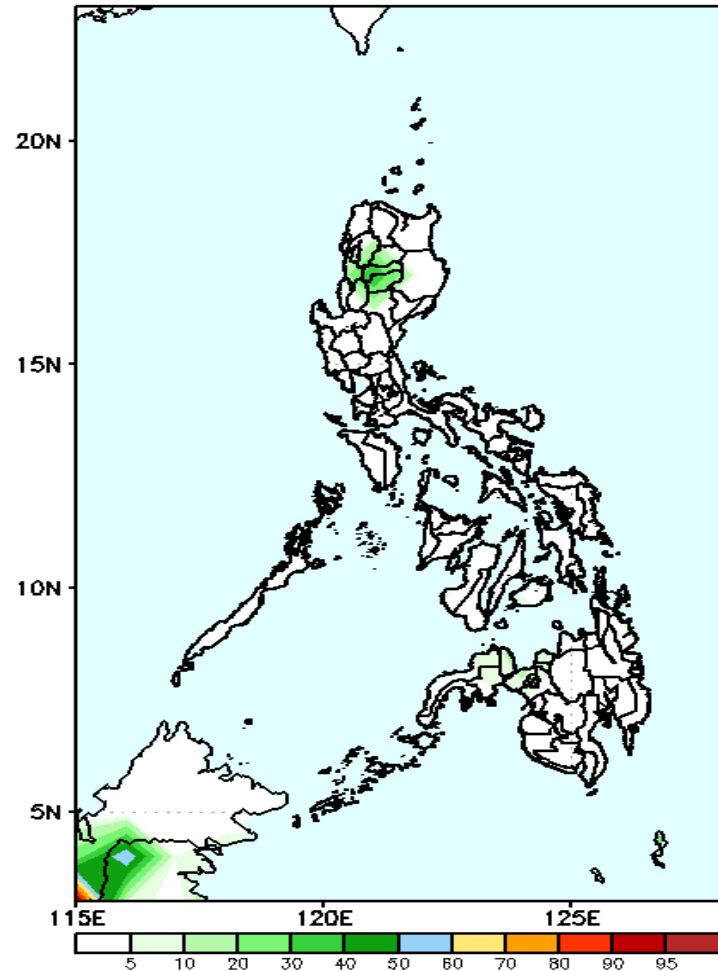


Less probability of rainfall to exceed 100mm in most parts of the country except in CAR and Zamboanga Peninsula where there is high probability during the forecast period.

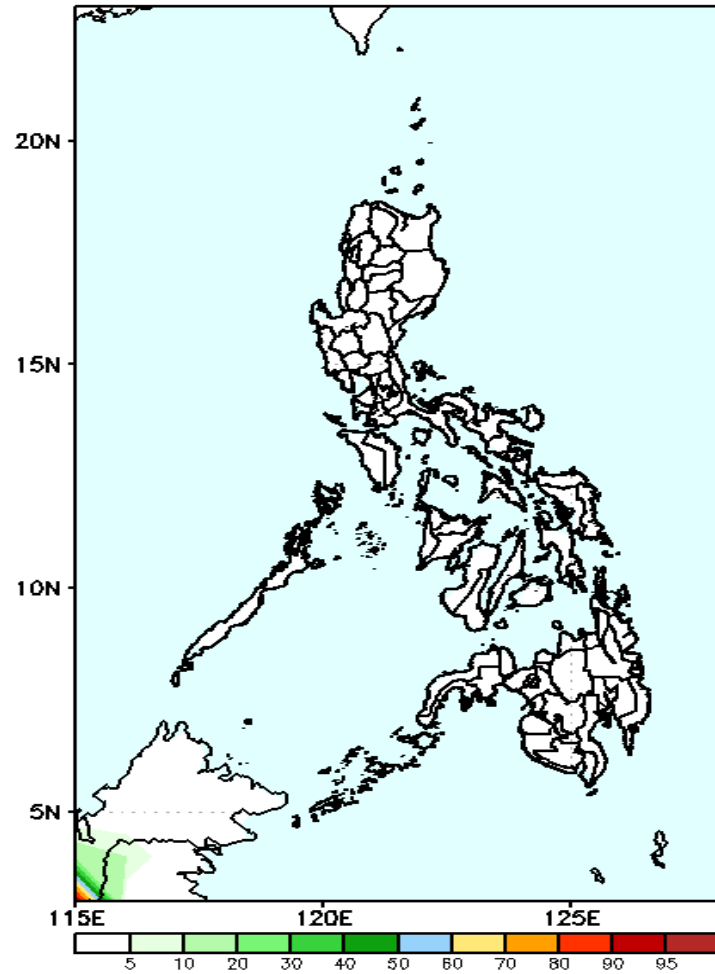
# Exceedance Probability > 100/150/200 mm

## Week 1: April 23- April 29, 2020

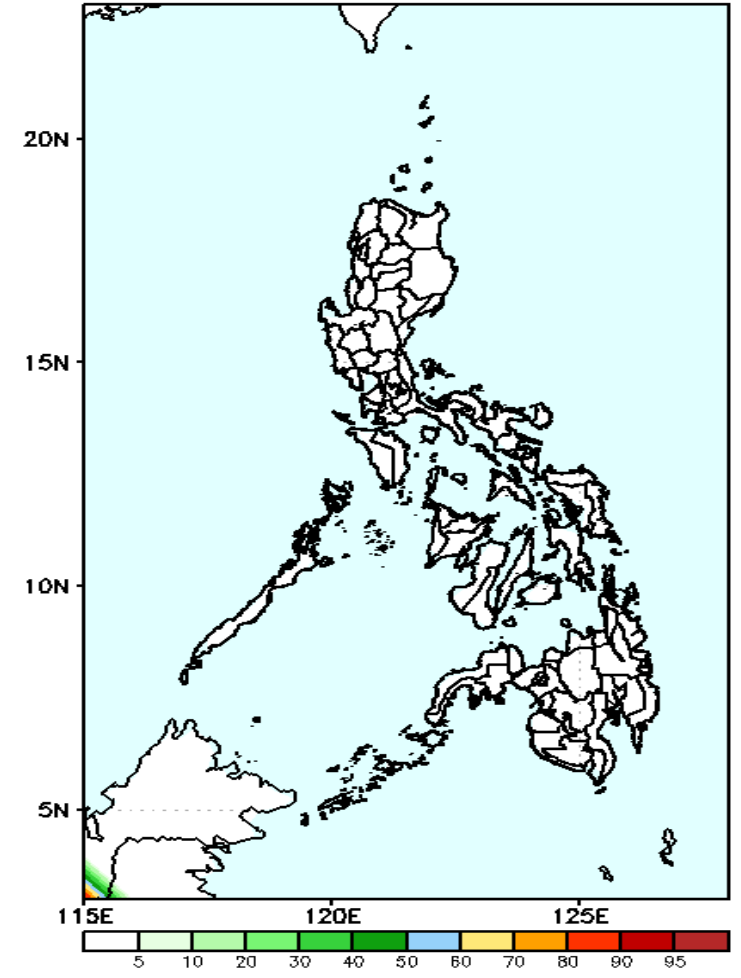
GEFS Week-1 Exceedance Prob. > 100mm  
Valid: 20200423 - 20200429



GEFS Week-1 Exceedance Prob. > 150mm  
Valid: 20200423 - 20200429



GEFS Week-1 Exceedance Prob. > 200mm  
Valid: 20200423 - 20200429



Less probability of rainfall to exceed 100 mm in most parts of the country during the forecast period.

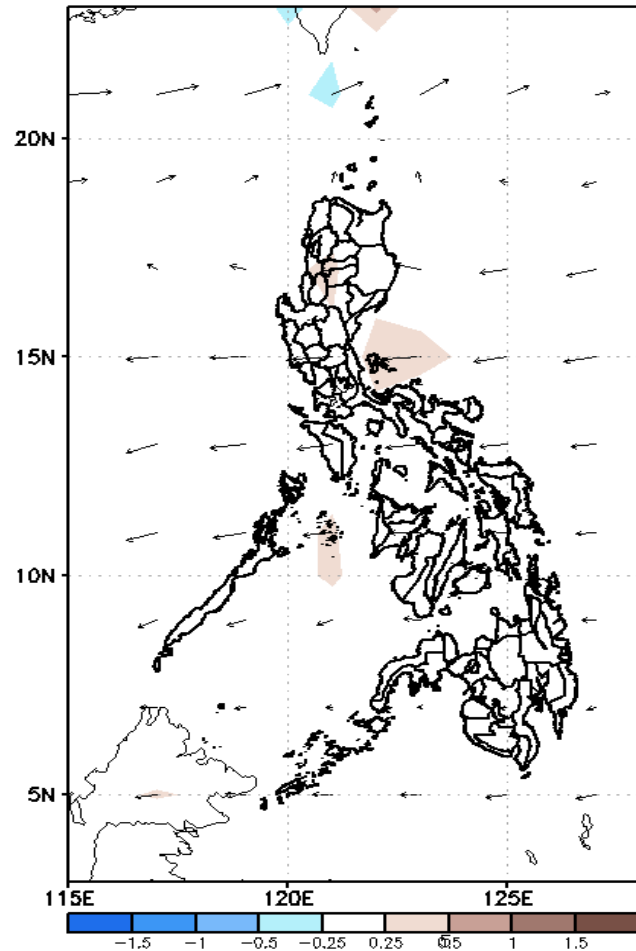
Less probability of rainfall to exceed 150 mm in most parts of the country during the forecast period.

Less probability of rainfall to exceed 200 mm in most parts of the country during the forecast period.

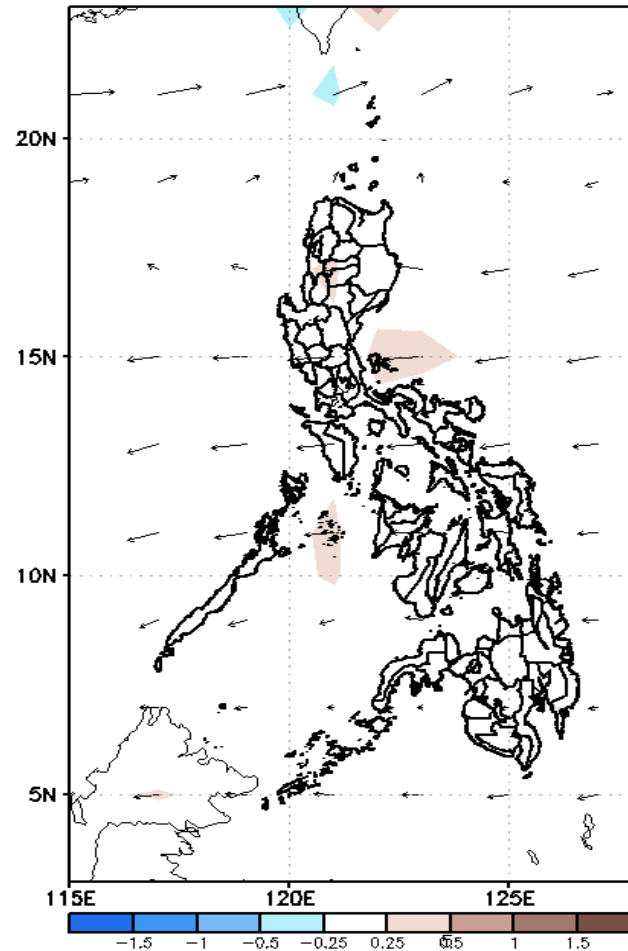
# GEFS Week-2 Forecasts: Divergence & Wind Anomaly

Week 2: April 30- May 06, 2020

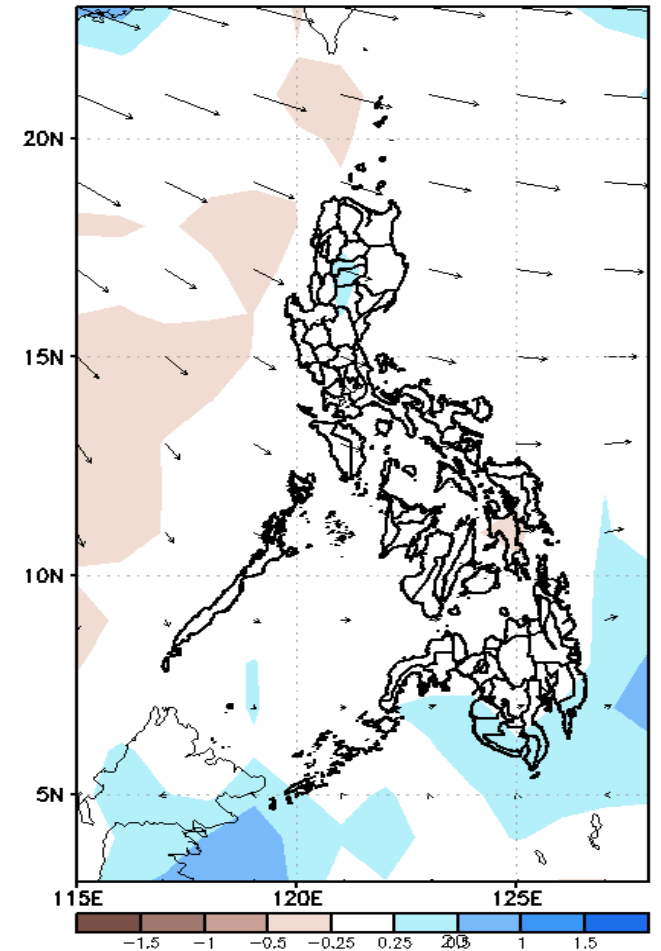
GEFS Week-2 850-hPa Divergence and Wind Anom  
Valid: 20200430 - 20200506



GEFS Week-2 700-hPa Divergence and Wind Anom  
Valid: 20200430 - 20200506



GEFS week-2 200-hPa Divergence and Wind Anom  
Valid: 20200430 - 20200506

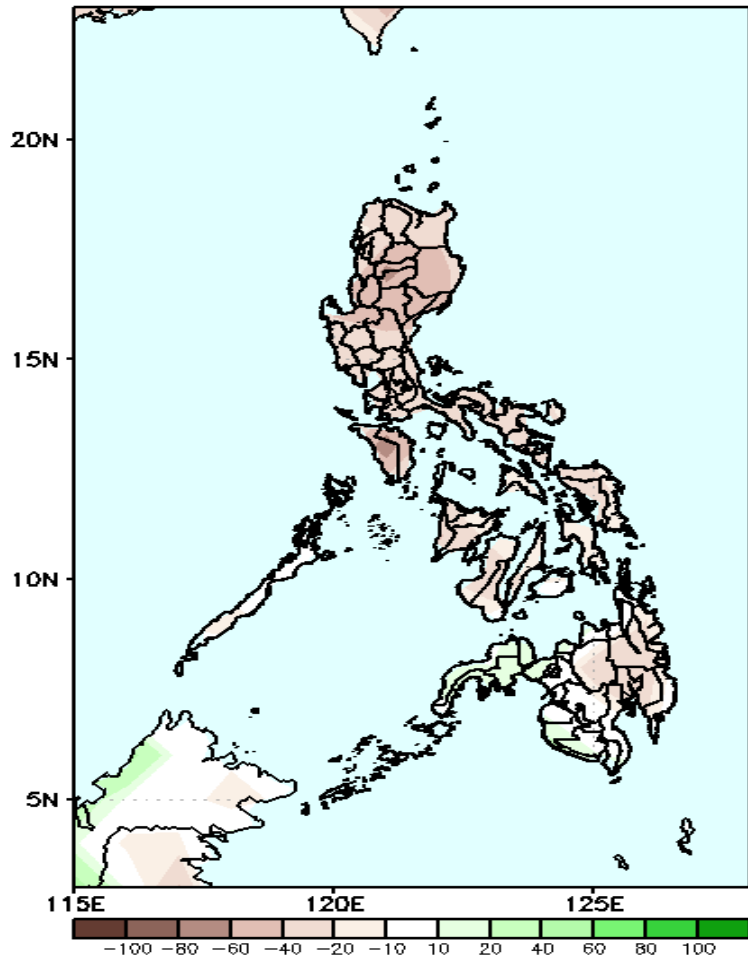


Upper level (750 hPa) Divergence suggest likelihood of precipitation in some parts of Luzon and most parts of Mindanao due to localize thunderstorm. Easterlies affecting most parts of the country during the forecast period.

# Precipitation Anomaly and Exceedance Probability > 25/50 mm

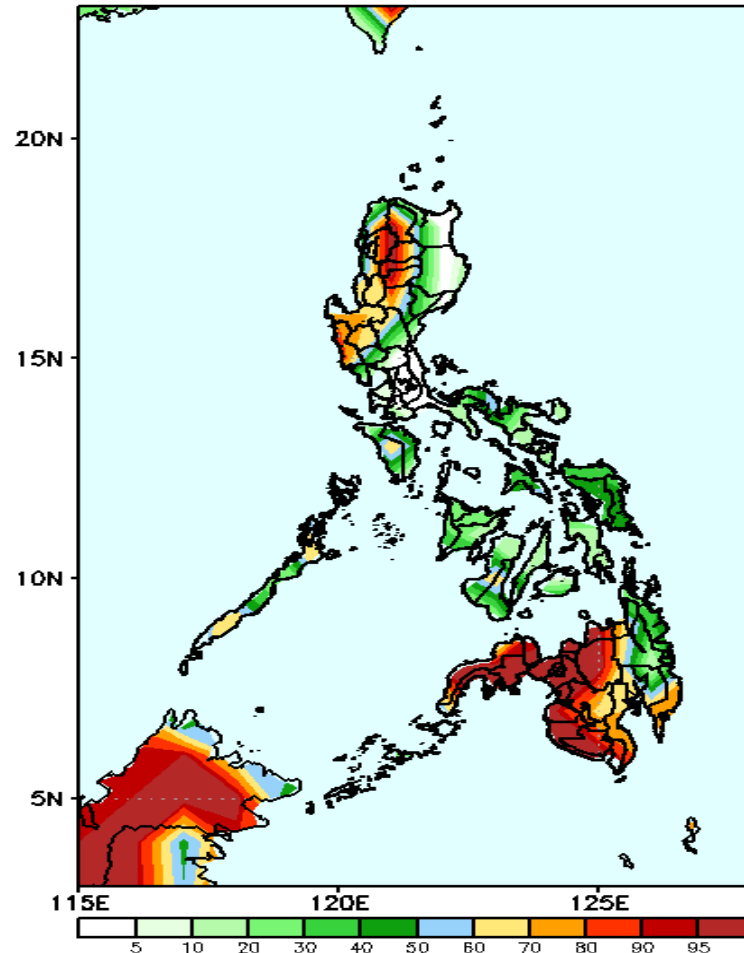
**Week 2: April 30- May 06, 2020**

GEFS Week-2 Precip Anomaly  
Valid: 20200430 - 20200506



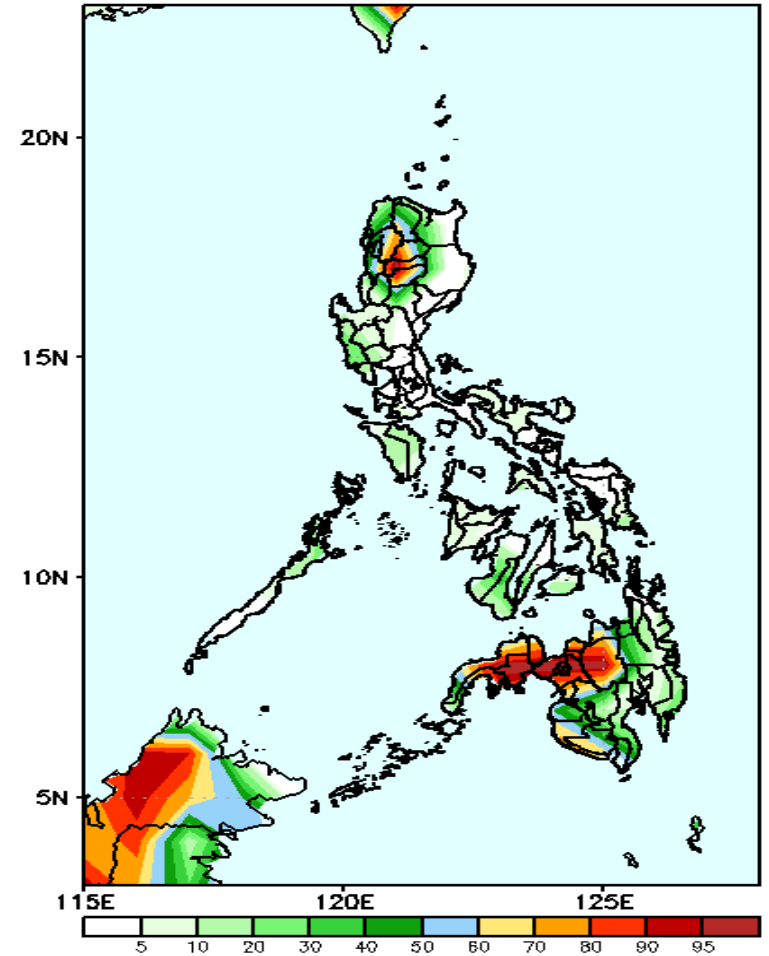
Rainfall deficit of 20-50mm is most likely in most parts of the country during the forecast period.

GEFS Week-2 Exceedance Prob. > 25mm  
Valid: 20200430 - 20200506



High probability of rainfall to exceed 25mm in most parts of Luzon and western and northern Mindanao while 40-60% probability for the rest of the country during the forecast period.

GEFS Week-2 Exceedance Prob. > 50mm  
Valid: 20200430 - 20200506



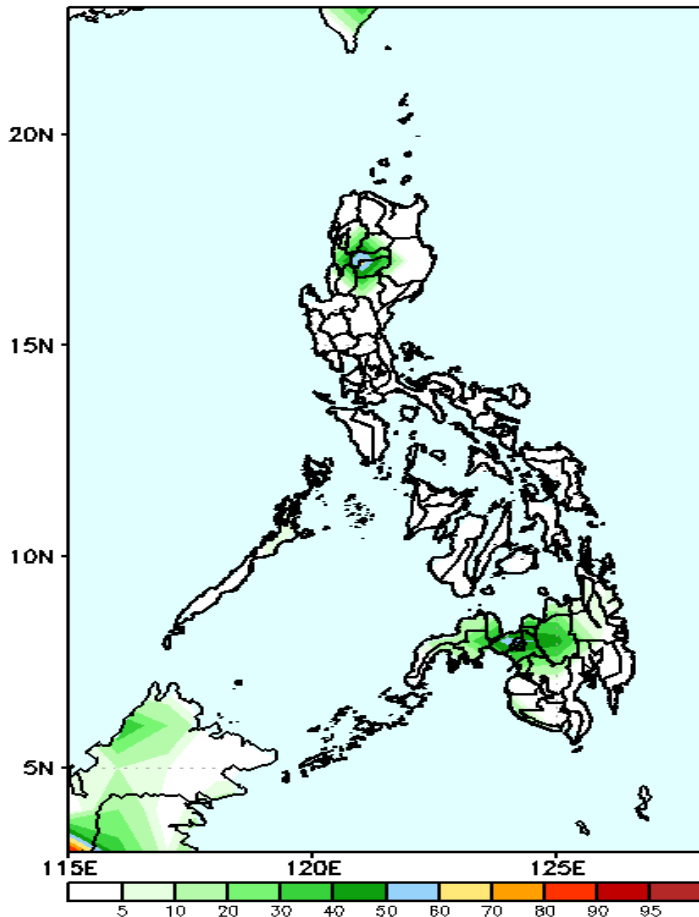
Less probability of rainfall to exceed 50mm in most parts of the country except in CAR, northern Mindanao and Zamboanga Peninsula where there is high probability during the forecast period.



# Exceedance Probability > 100/150/200 mm

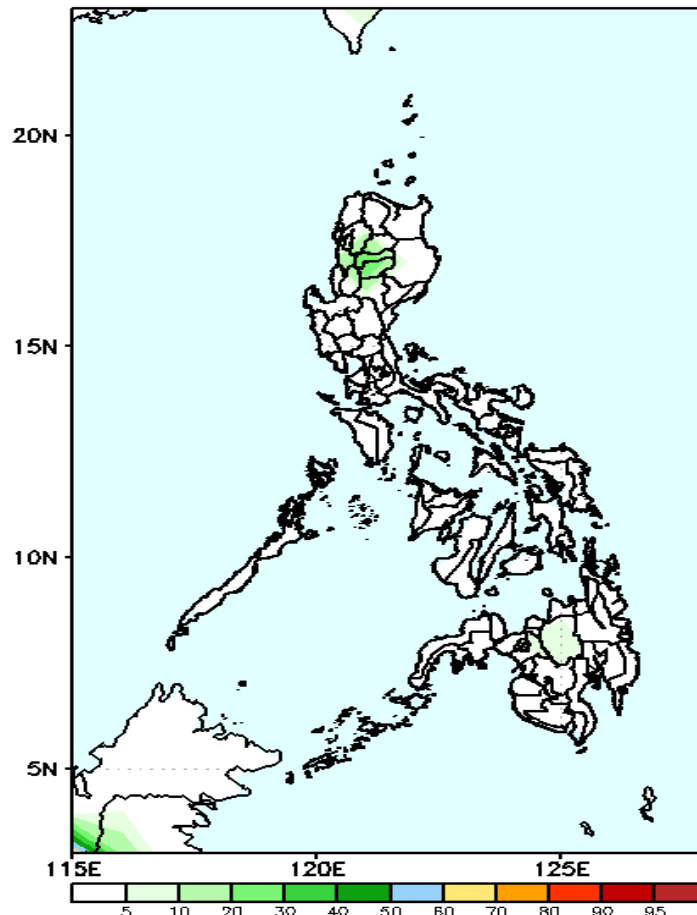
## Week 2: April 30- May 06, 2020

GEFS Week-2 Exceedance Prob. > 100mm  
Valid: 20200430 - 20200506



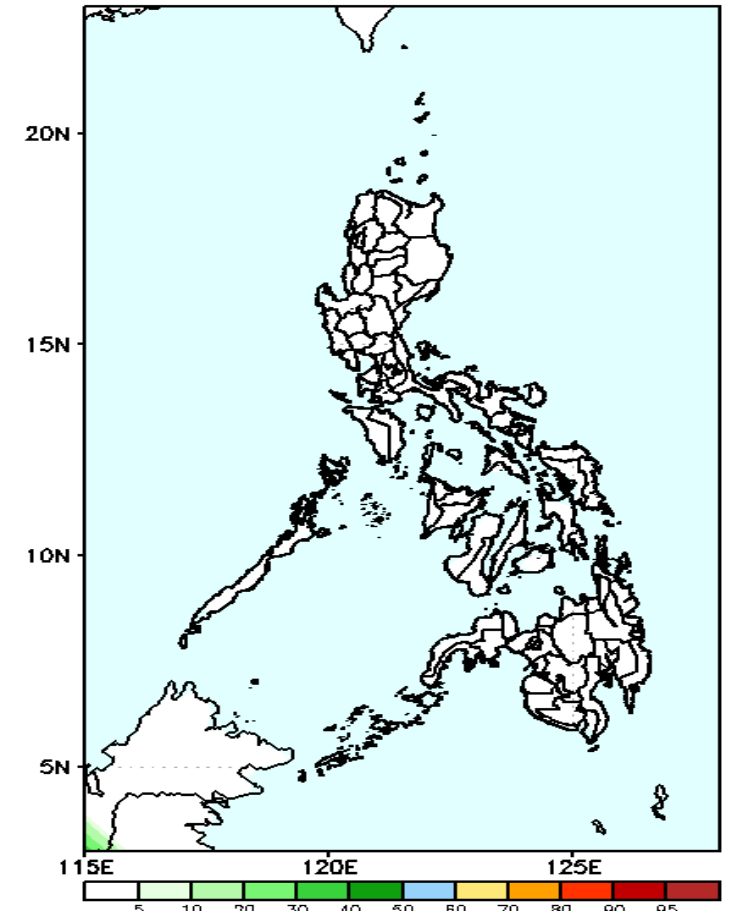
Less probability of rainfall to exceed 100mm in most parts of the country except in CAR, northern Mindanao and Zamboanga Peninsula where there is 40-50% chance during the forecast period.

GEFS Week-2 Exceedance Prob. > 150mm  
Valid: 20200430 - 20200506



Less probability of rainfall to exceed 150 mm in most parts of the country during the forecast period.

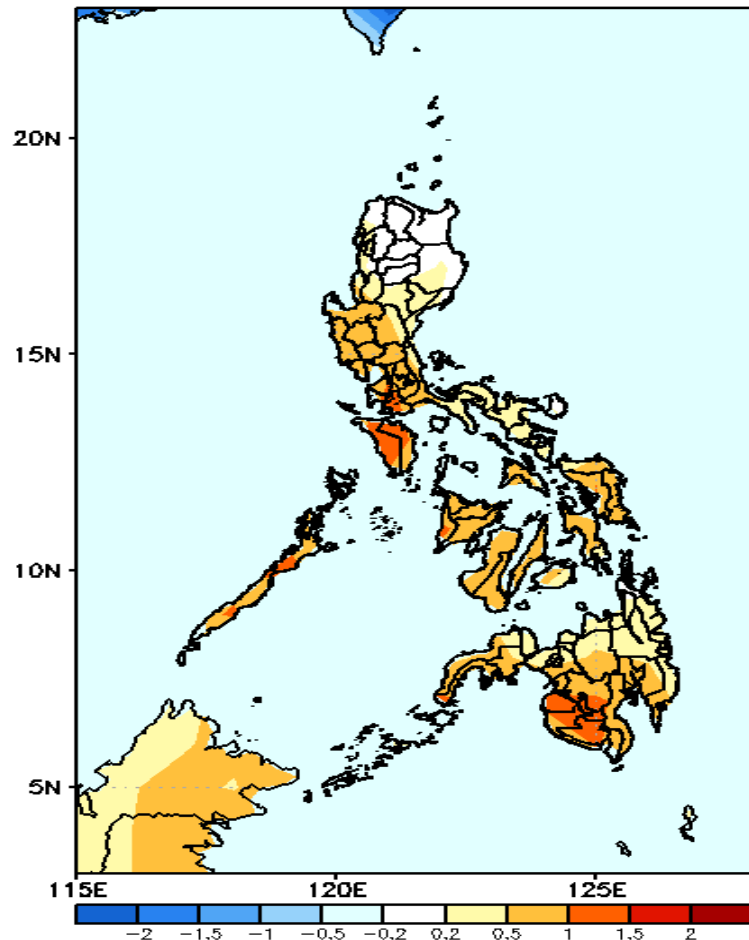
GEFS Week-2 Exceedance Prob. > 200mm  
Valid: 20200430 - 20200506



Less probability of rainfall to exceed 200 mm in most parts of the country during the forecast period.

# GEFS Week-1 & 2 Forecasts: T2m Anomaly

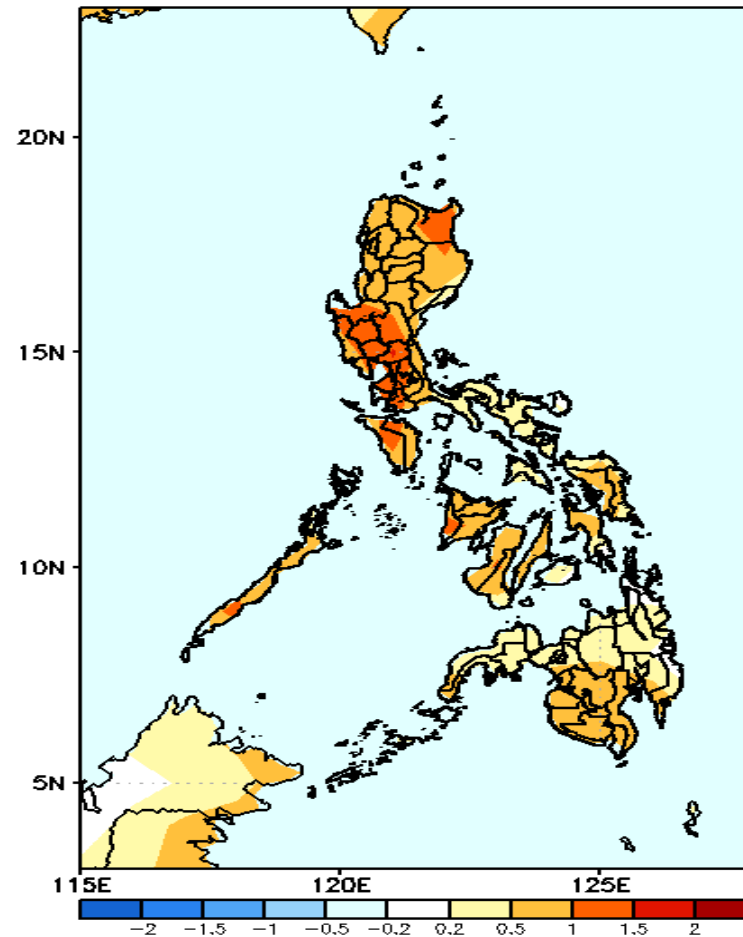
GEFS Week-1 T2m Anomaly  
Valid: 20200423 - 20200429



## 2m Temperature Week 1: April 23- April 29, 2020

Average to slightly warmer than average surface air temperature will likely experience in Luzon while slightly warmer to warmer than average surface air temperature is expected in Visayas and Mindanao during the forecast period.

GEFS Week-2 T2m Anomaly  
Valid: 20200430 - 20200506



## 2m Temperature Week 2 April 30- May 06, 2020

Slightly warmer to warmer than average surface air temperature will likely experience in most parts of the country during the forecast period.