



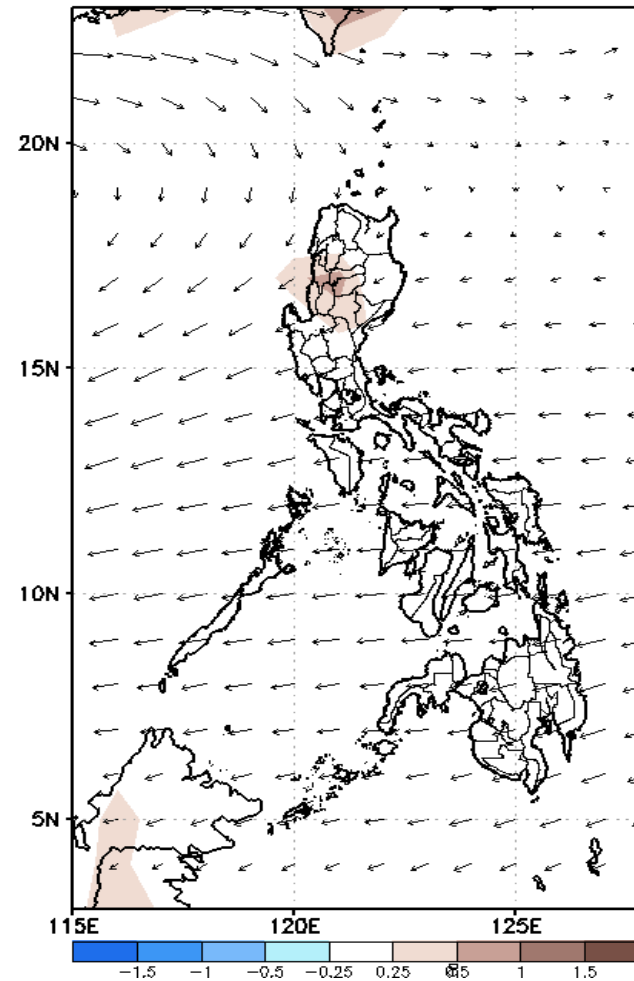
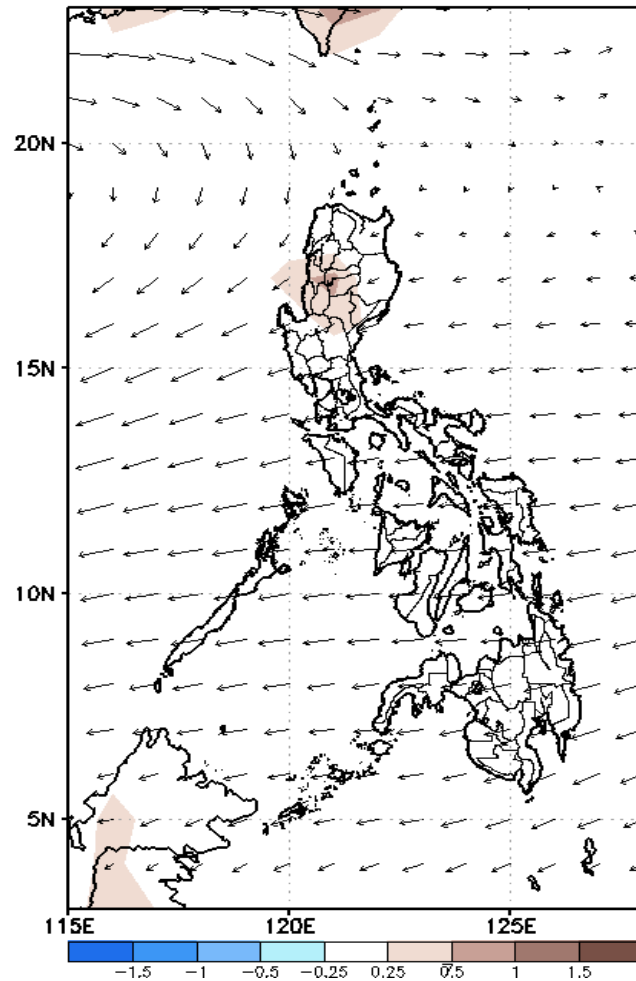
# Week 1 & Week 2 Forecast for the Philippines using GEFS Model



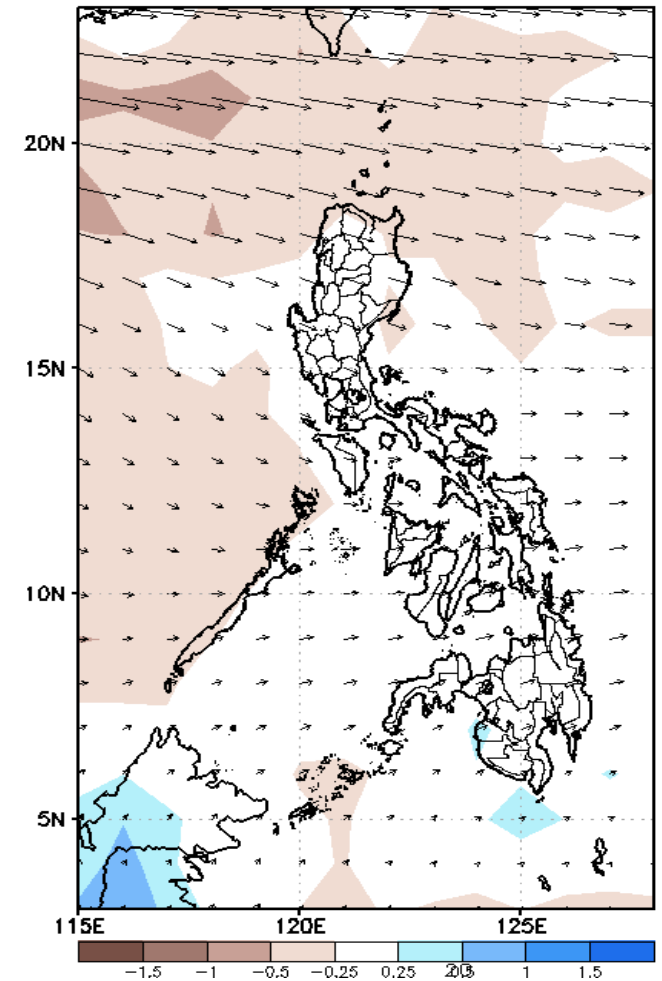
# GEFS Week-1 Forecasts: Wind Anomaly Forecast

Week 1: Apr 24-30, 2023

GEFS Week-1 850-hPa Divergence and Wind Anom  
Valid: 20230424 - 20230430

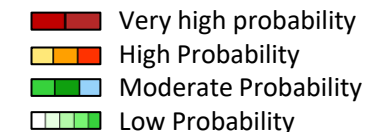


GEFS Week-1 200-hPa Divergence and Wind Anom  
Valid: 20230424 - 20230430



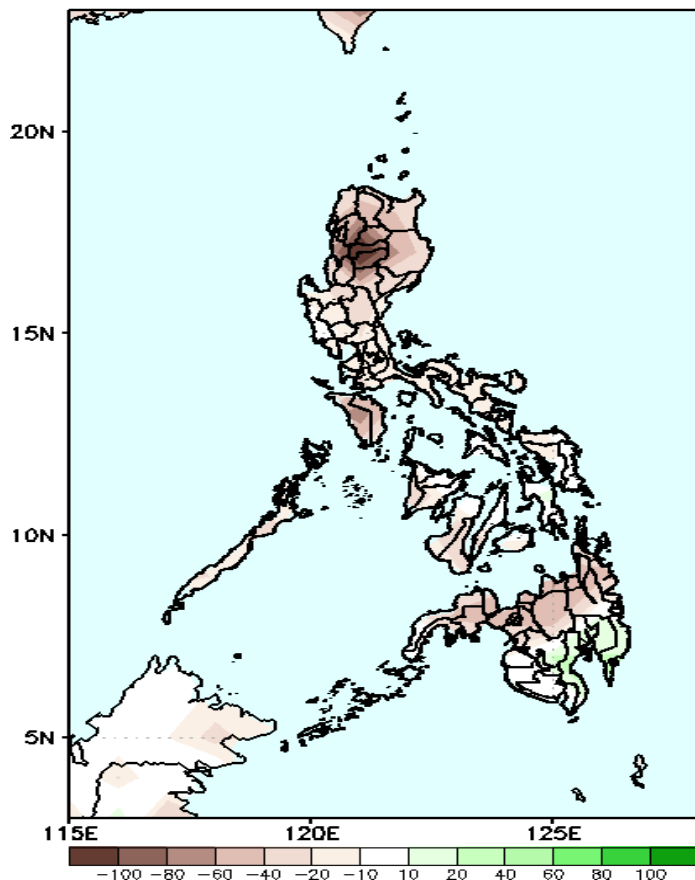
Easterlies is forecasted to affect most parts of the country; expect dry and hot weather during the forecast period.

# Precipitation Anomaly and Exceedance Probability > 25/50 mm



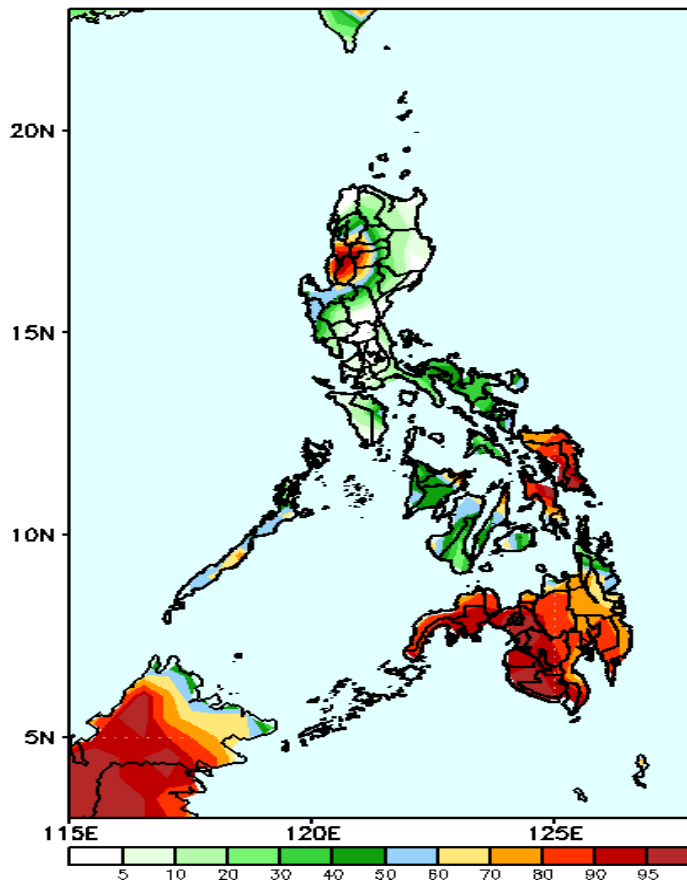
Week 1: Apr 24-30, 2023

GEFS Week-1 Precip Anomaly  
Valid: 20230424 - 20230430



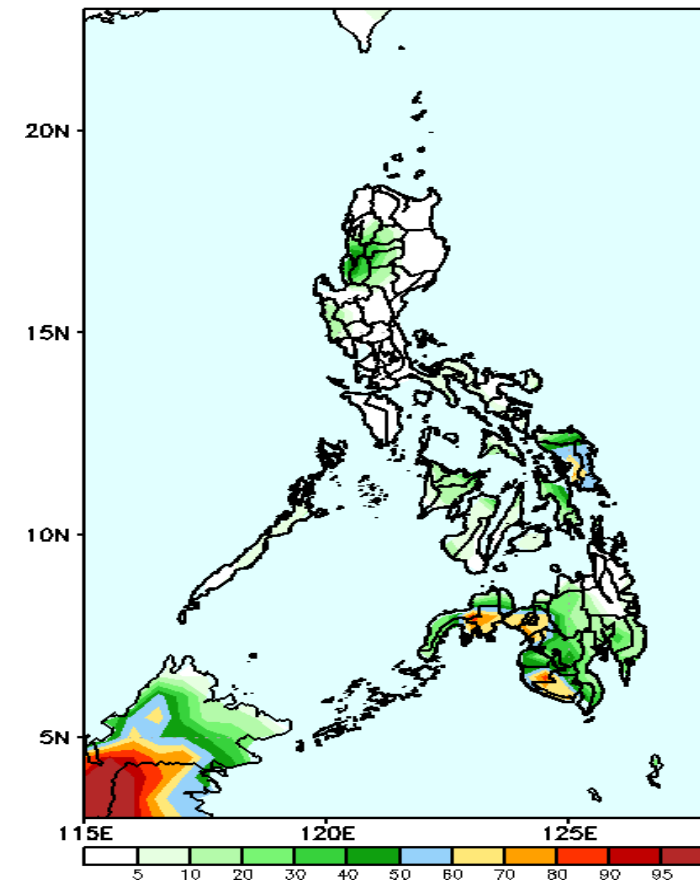
Rainfall deficit of more than 100mm is expected in Kalinga, Mt. Province & Ifugao, 20-90mm in most parts of the country except in some areas in southern Mindanao where there is 20-40mm increase of rainfall during the forecast period.

GEFS Week-1 Exceedance Prob. > 25mm  
Valid: 20230424 - 20230430



High to a very high probability to exceed 25mm of rainfall in Mindanao, Eastern Visayas; moderate to high probability in Palawan, Pangasinan and some parts CAR and Central and Western Visayas while low to moderate likelihood over the rest of the country.

GEFS Week-1 Exceedance Prob. > 50mm  
Valid: 20230424 - 20230430



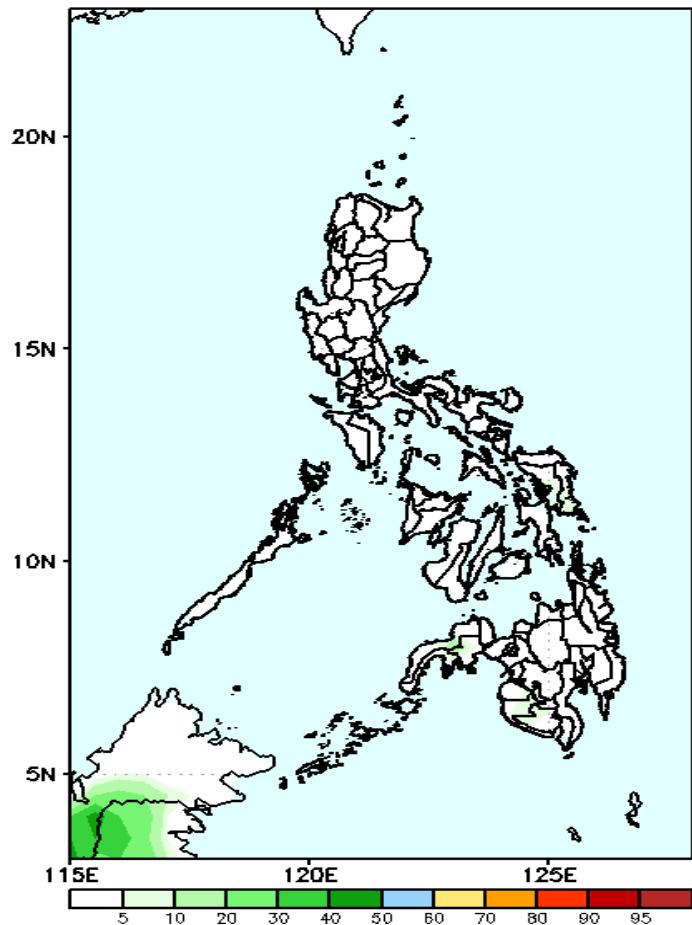
Moderate to High probability to exceed 50mm of rainfall in some parts of Zamboanga peninsula and SOCCSKARGEN while low likelihood over the rest of the country.

# Exceedance Probability > 100/150/200 mm

- Very high probability
- High Probability
- Moderate Probability
- Low Probability

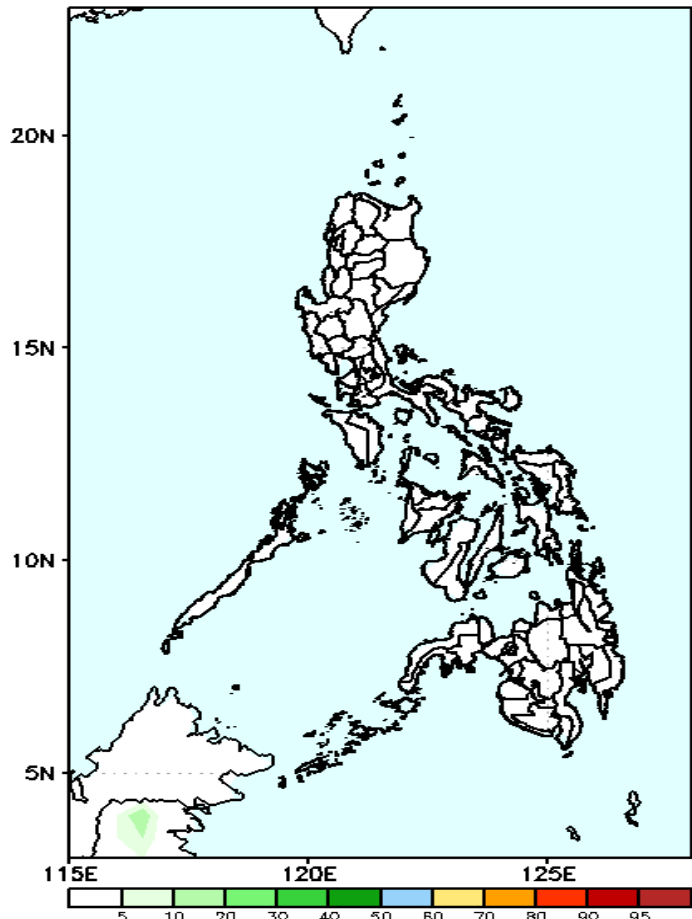
Week 1: Apr 24-30, 2023

GEFS Week-1 Exceedance Prob. > 100mm  
Valid: 20230424 - 20230430



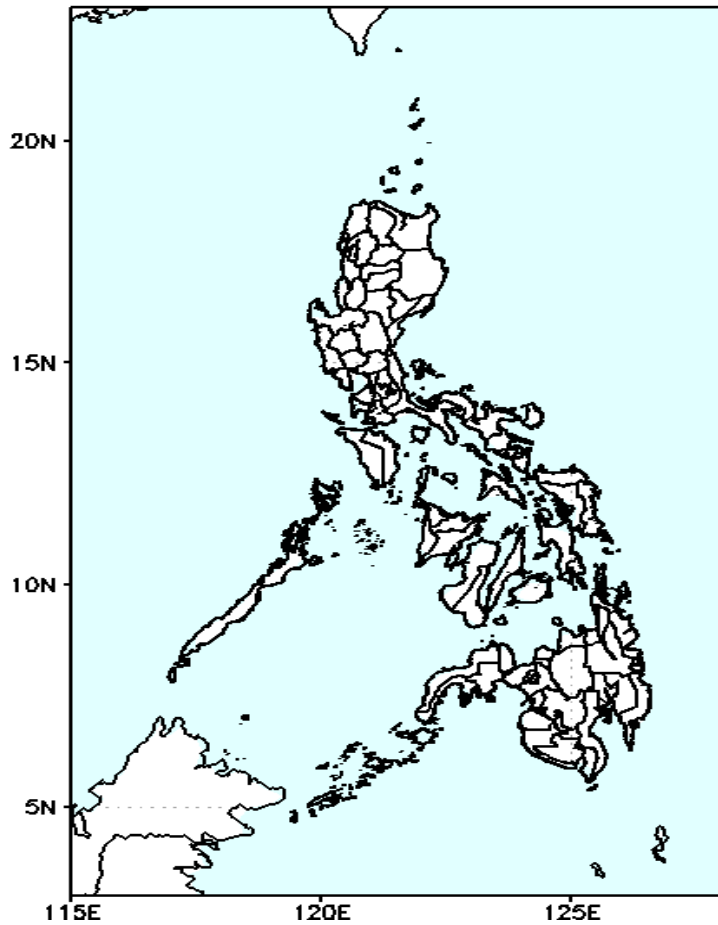
Low probability of rainfall to exceed 100mm in most parts of the country during the forecast period.

GEFS Week-1 Exceedance Prob. > 150mm  
Valid: 20230424 - 20230430



Low probability of rainfall to exceed 150mm in most parts of the country during the forecast period.

GEFS Week-1 Exceedance Prob. > 200mm  
Valid: 20230424 - 20230430

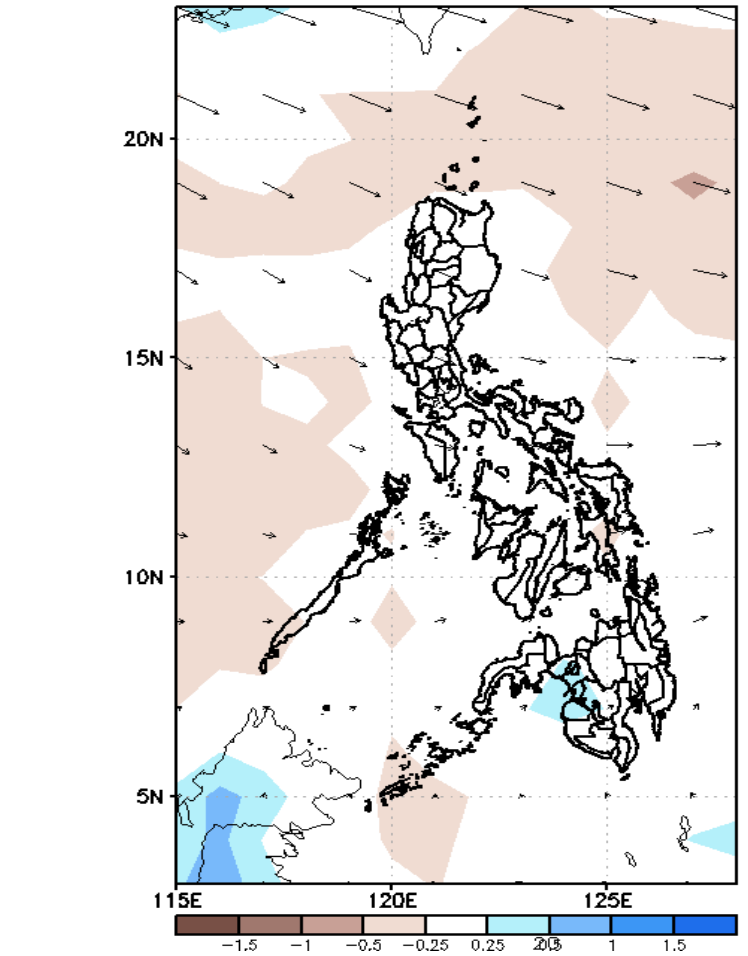
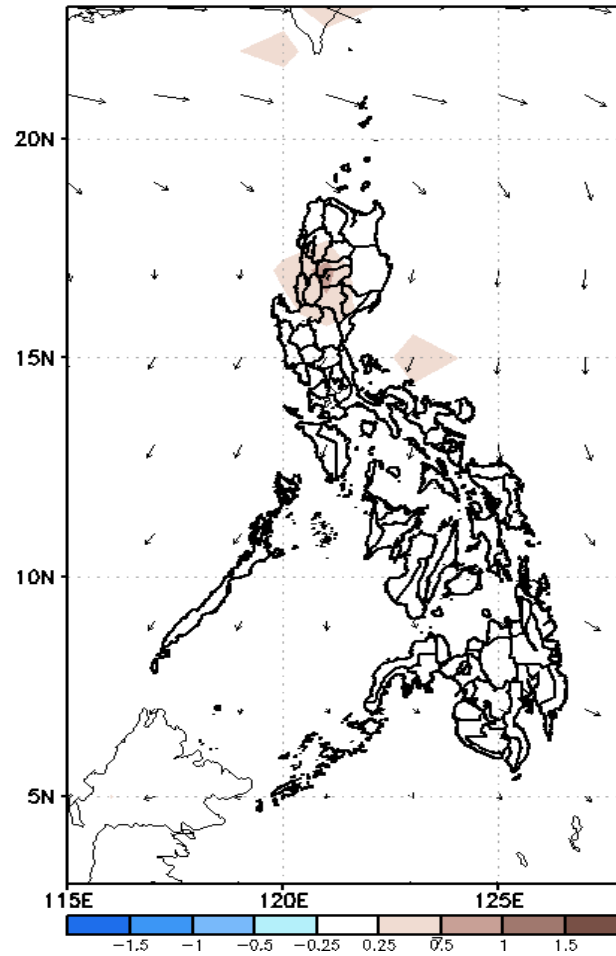
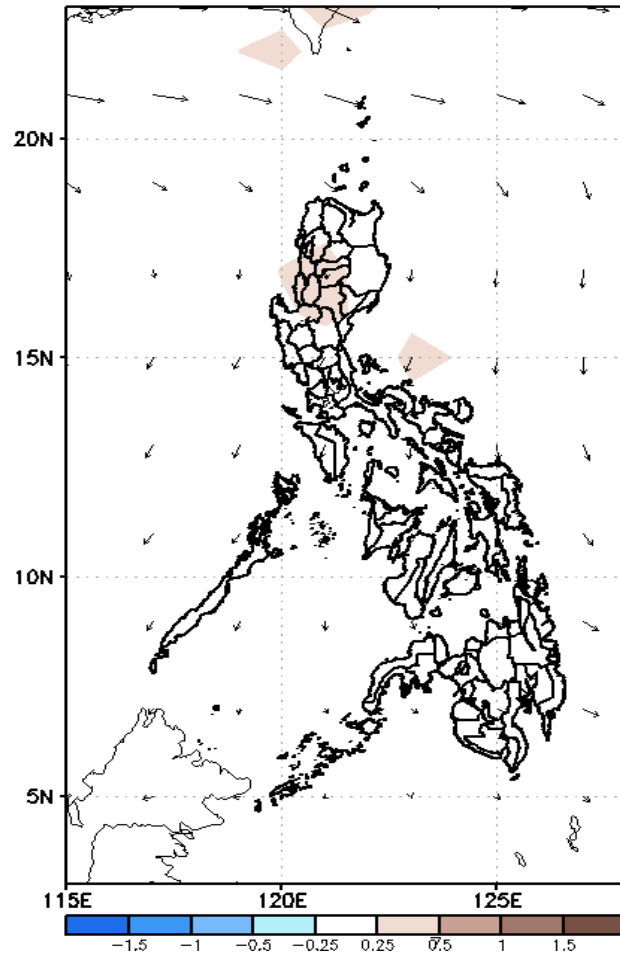


Low probability of rainfall to exceed 200mm in most parts of the country during the forecast period.

# GEFS Week-2 Forecasts: Wind Anomaly Forecast

Week 2: May 01-07, 2023

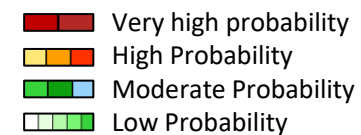
GEFS Week-2 850-hPa Divergence and Wind Anomaly  
Valid: 20230501 - 20230507



Easterlies is forecasted to affect most parts of the country; expect dry and hot weather during the forecast period.

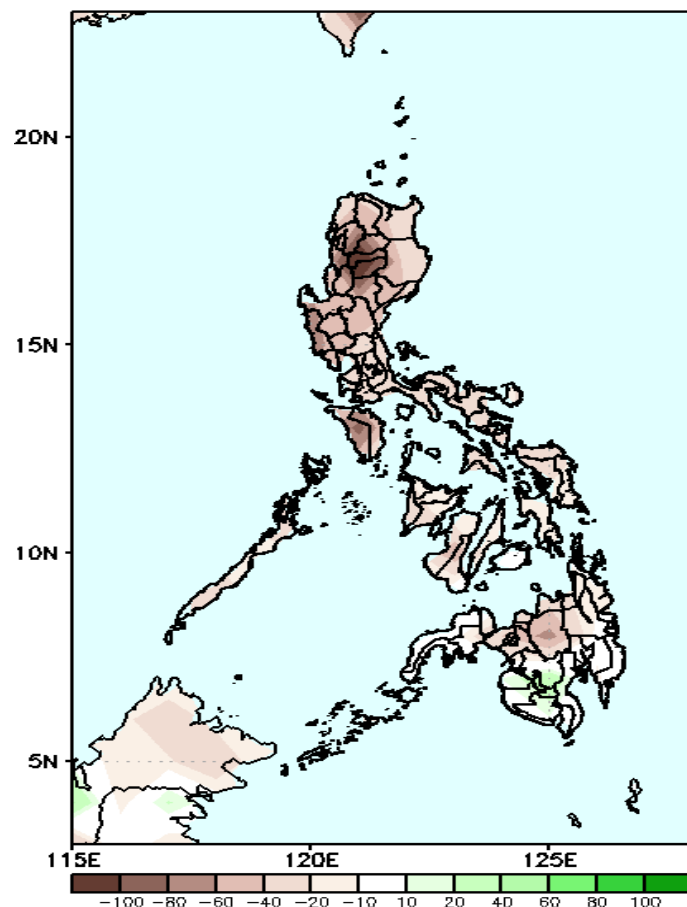


# Precipitation Anomaly and Exceedance Probability > 25/50 mm



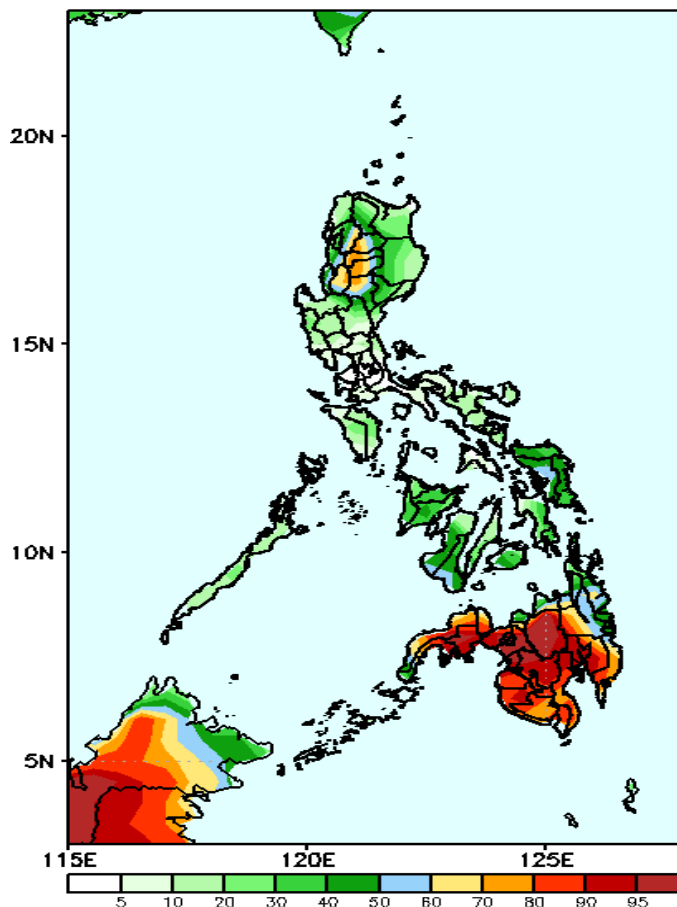
Week 2: May 01-07, 2023

GEFS Week-2 Precip Anomaly  
Valid: 20230501 - 20230507



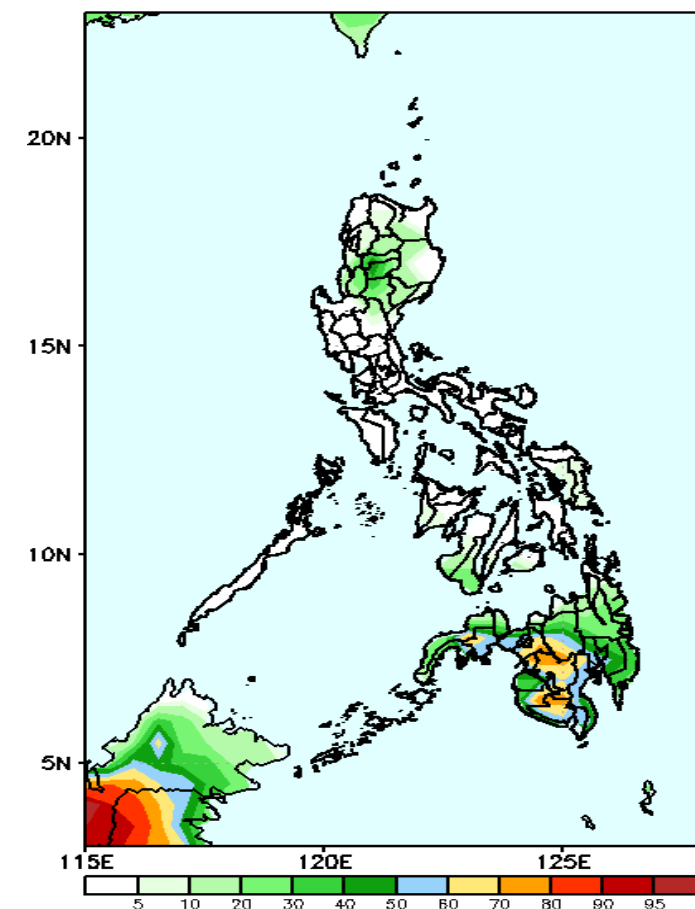
Rainfall deficit of more than 100mm is expected in Mt. Province & Ifugao, 40-100mm in most parts of the country except in some areas in southwestern Mindanao where there is 20-40mm increase of rainfall during the forecast period.

GEFS Week-2 Exceedance Prob. > 25mm  
Valid: 20230501 - 20230507



High to a very high probability to exceed 25mm of rainfall in Mindanao; moderate to high probability in Nueva Vizcaya, most parts of CAR and some areas in Visayas while low likelihood over the rest of the country.

GEFS Week-2 Exceedance Prob. > 50mm  
Valid: 20230501 - 20230507

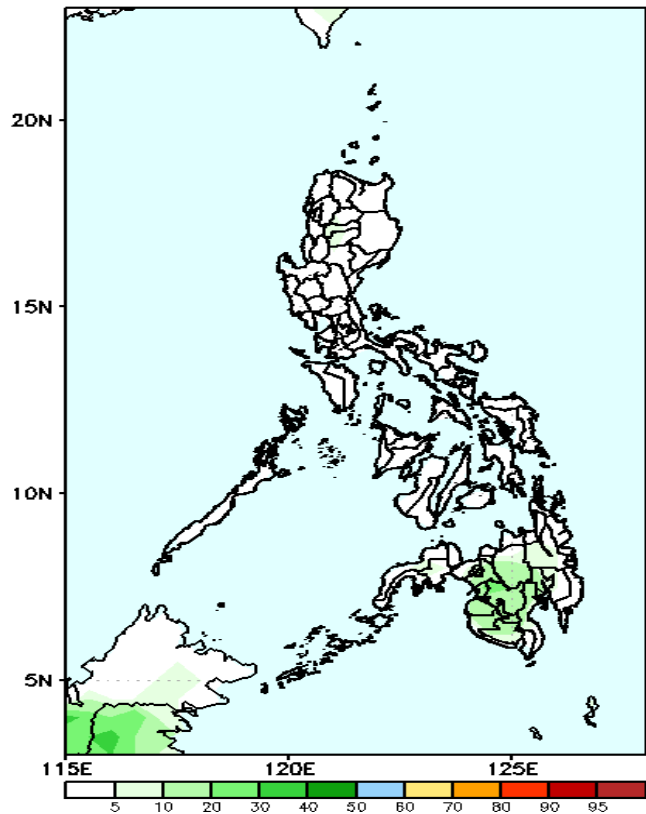


Moderate to High probability to exceed 50mm of rainfall in most parts of SOCCSKARGEN and portions of Zamboanga Peninsula and Bukidnon while low likelihood over the rest of the country.

# Exceedance Probability > 100/150/200 mm

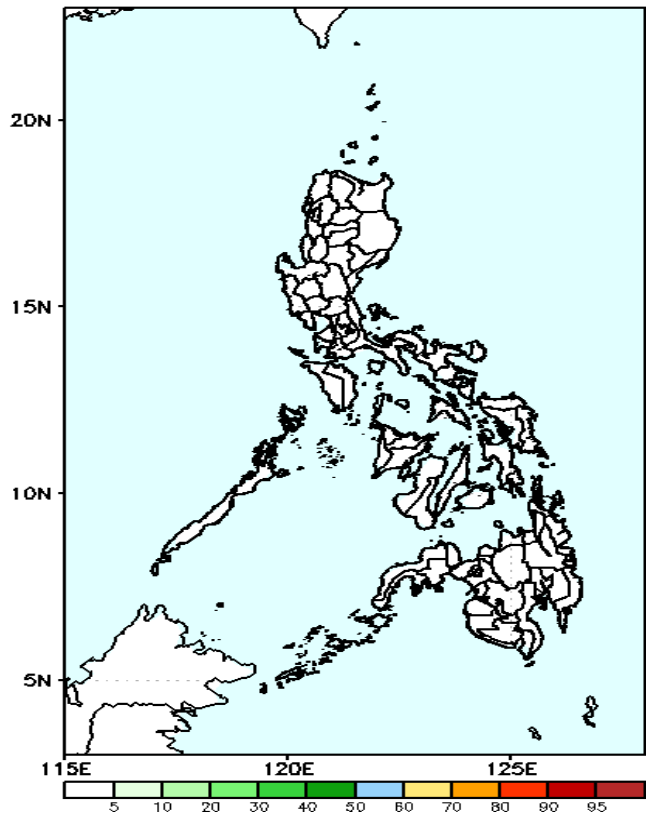
Week 2: May 01-07, 2023

GEFS Week-2 Exceedance Prob. > 100mm  
Valid: 20230501 – 20230507



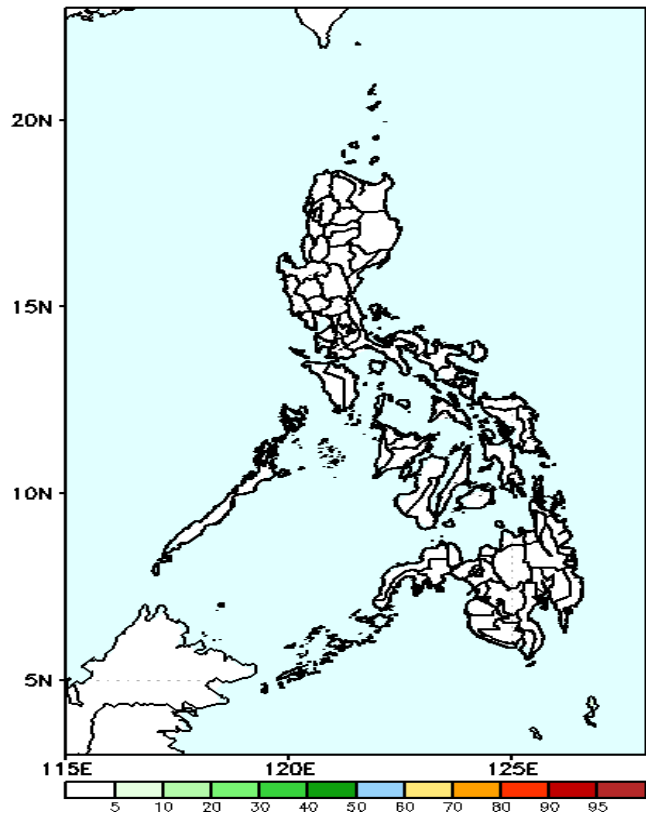
Low probability of rainfall to exceed 100mm in most parts of the country during the forecast period.

GEFS Week-2 Exceedance Prob. > 200mm  
Valid: 20230501 – 20230507



Low probability of rainfall to exceed 150mm in most parts of the country during the forecast period.

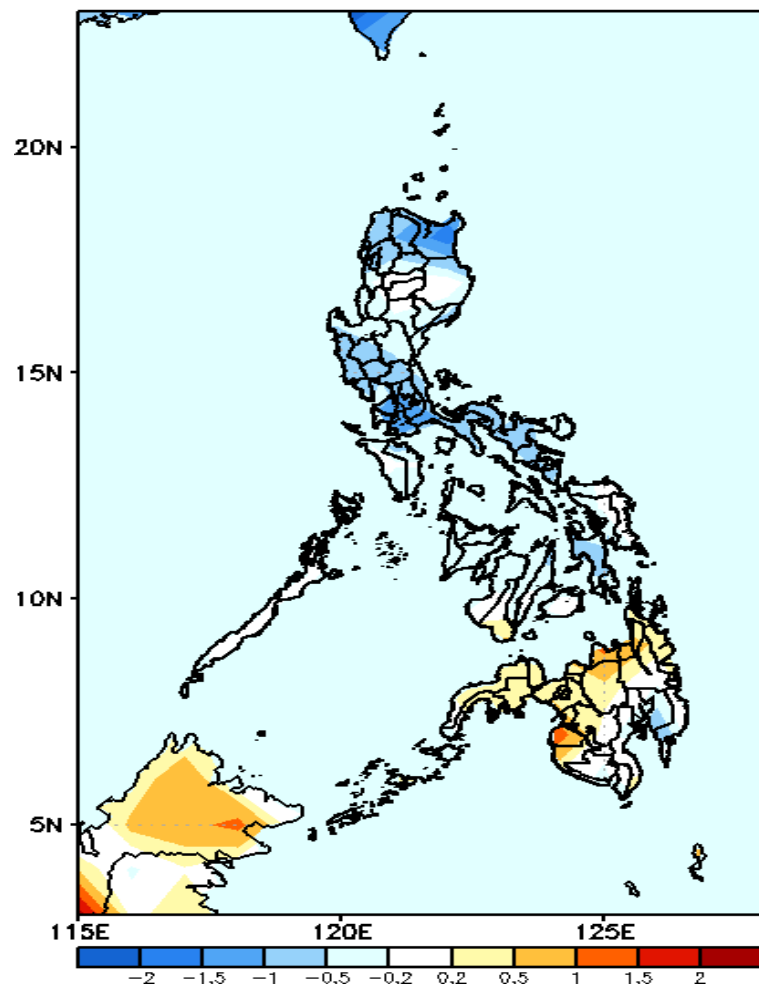
GEFS Week-2 Exceedance Prob. > 150mm  
Valid: 20230501 – 20230507



Low probability of rainfall to exceed 200mm in most parts of the country during the forecast period.

# GEFS Week-1 & 2 Forecasts: T2m Anomaly

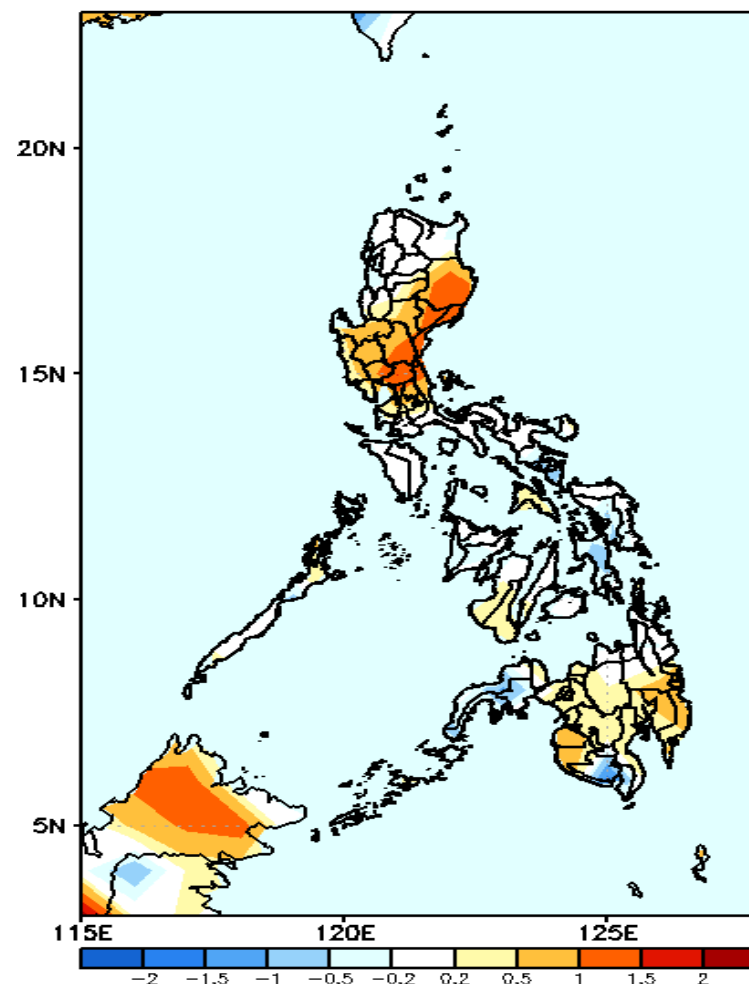
GEFS Week-1 T2m Anomaly  
Valid: 20230424 – 20230430



## 2m Temperature Week 1: Apr 24-30, 2023

Average to cooler than average surface air temperature will likely experience in most parts of Luzon and Visayas while most parts of Mindanao will likely have average to warmer temperature during the forecast period.

GEFS Week-2 T2m Anomaly  
Valid: 20230501 – 20230507



## 2m Temperature Week 2: May 01-07, 2023

Average to warmer than average surface air temperature will likely experience in most parts of the country during the forecast period.