



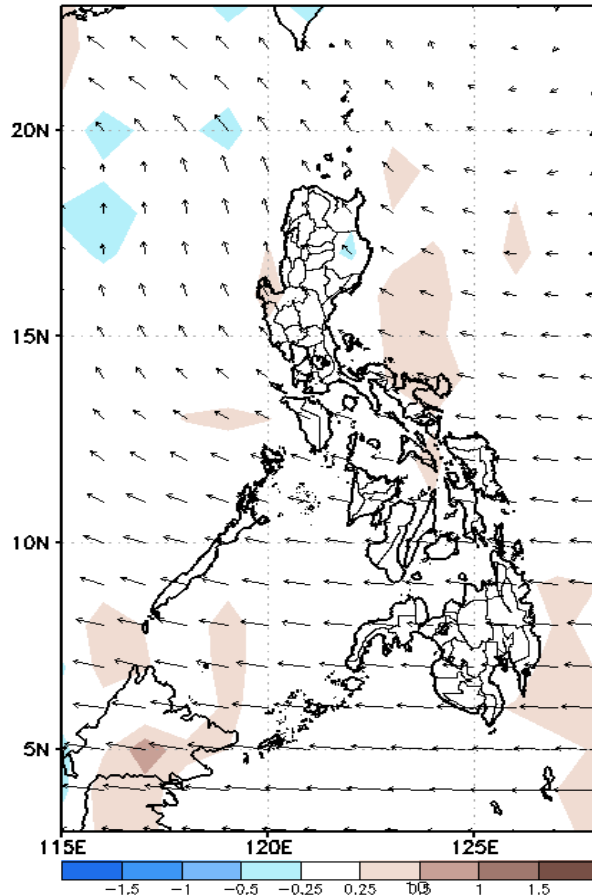
Week 1 & Week 2 Forecast for the Philippines using GEFS Model



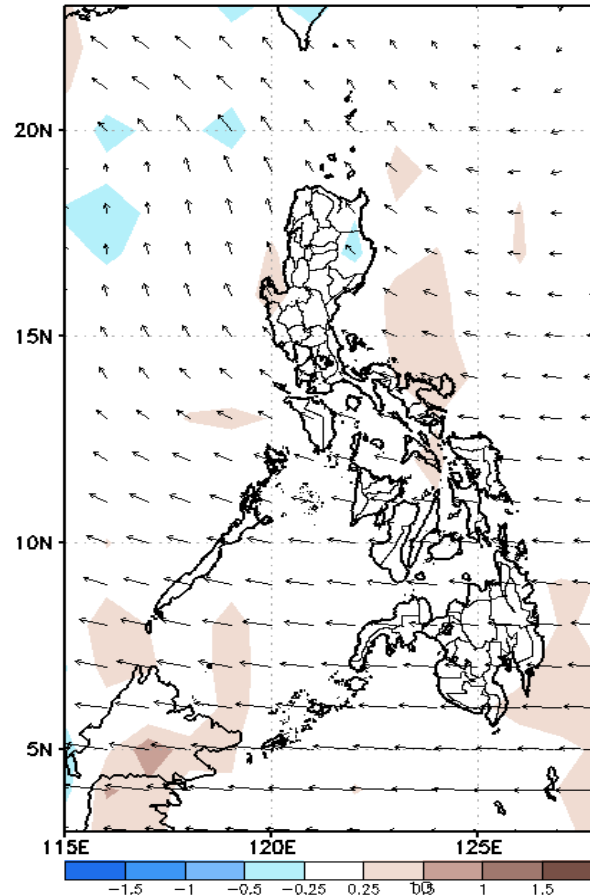
GEFS Week-1 Forecasts: Wind Anomaly Forecast

Week 1: : Aug 24-30, 2022

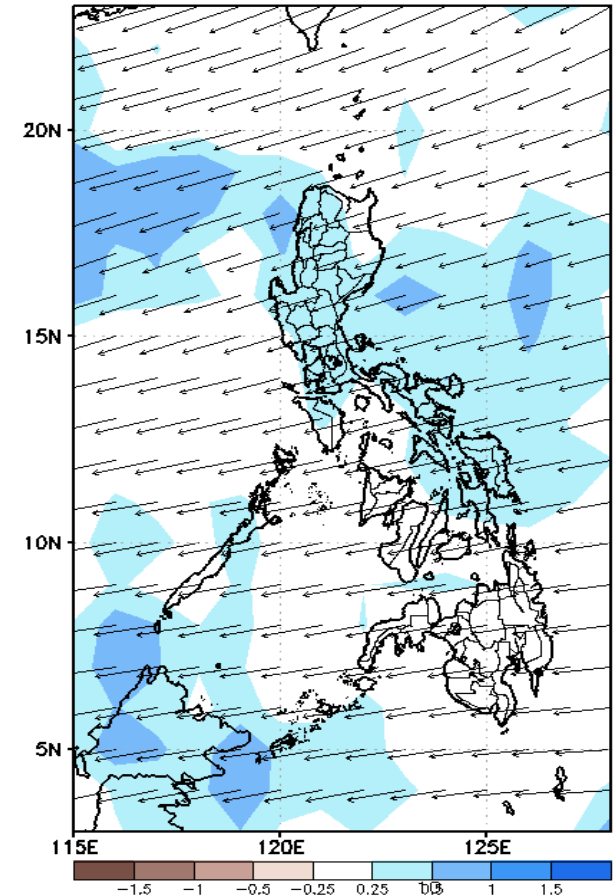
GEFS Week-1 850-hPa Divergence and Wind Anom.
Valid: 20220824 - 20220830



GEFS Week-1 700-hPa Divergence and Wind Anom.
Valid: 20220824 - 20220830



GEFS Week-1 200-hPa Divergence and Wind Anom.
Valid: 20220824 - 20220830

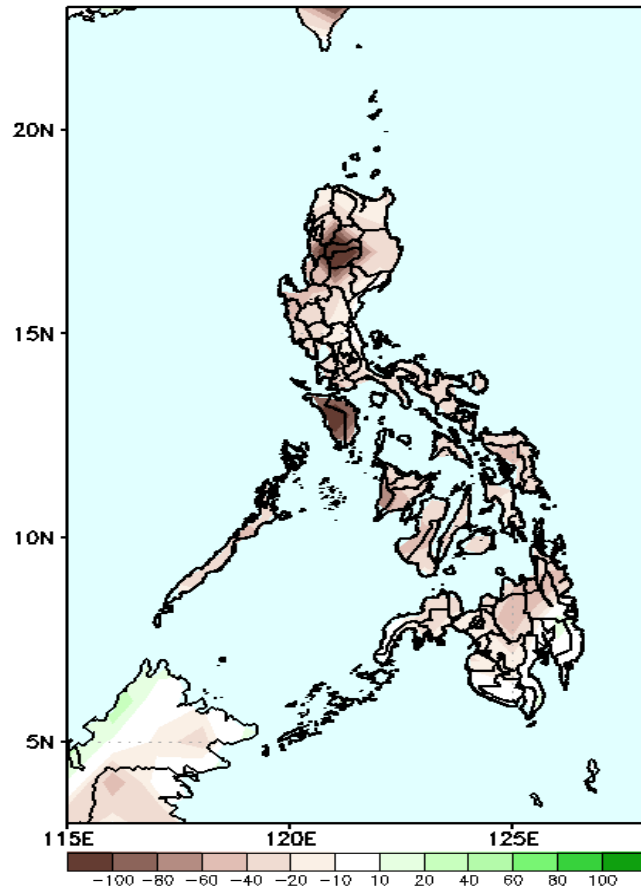


Southwest Monsoon affecting the western section of Northern and Central Luzon while Easterlies affecting the rest of the country during the forecast period.

Precipitation Anomaly and Exceedance Probability > 25/50 mm

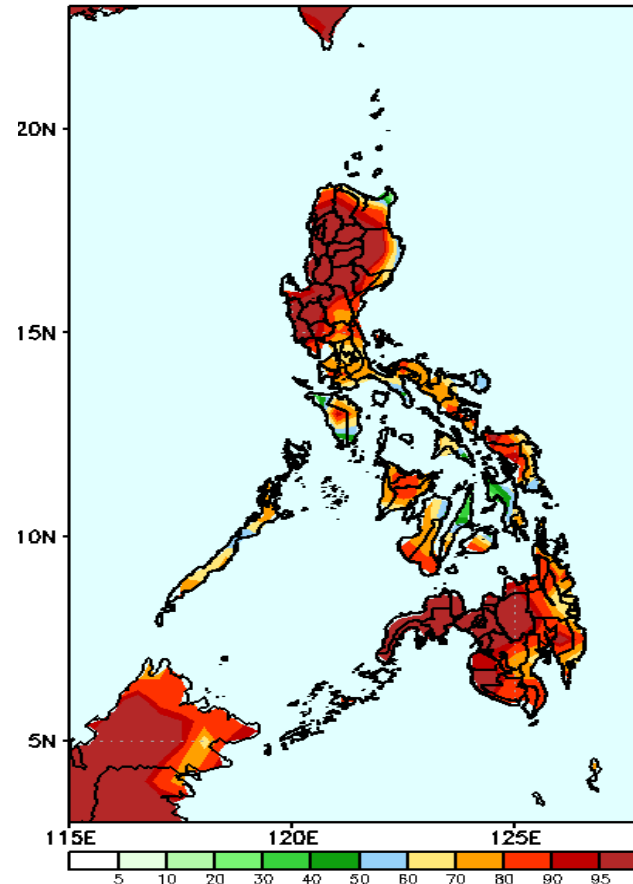
Week 1: Aug 24-30, 2022

GEFS Week-1 Precip Anomaly
Valid: 20220824 - 20220830



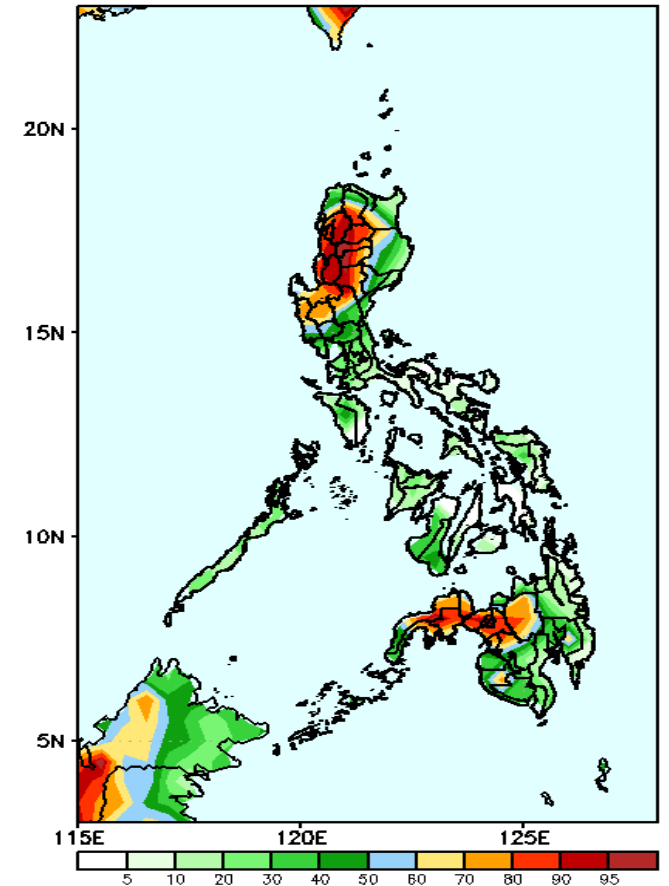
Rainfall deficit of more than 100mm is expected in Kalinga, Mt. Province, Ifugao and Mindoro and 20-80mm for the rest of the country during the forecast period.

GEFS Week-1 Exceedance Prob. > 25mm
Valid: 20220824 - 20220830



High probability of rainfall to exceed 25mm in most parts of the country during the forecast period.

GEFS Week-1 Exceedance Prob. > 50mm
Valid: 20220824 - 20220830

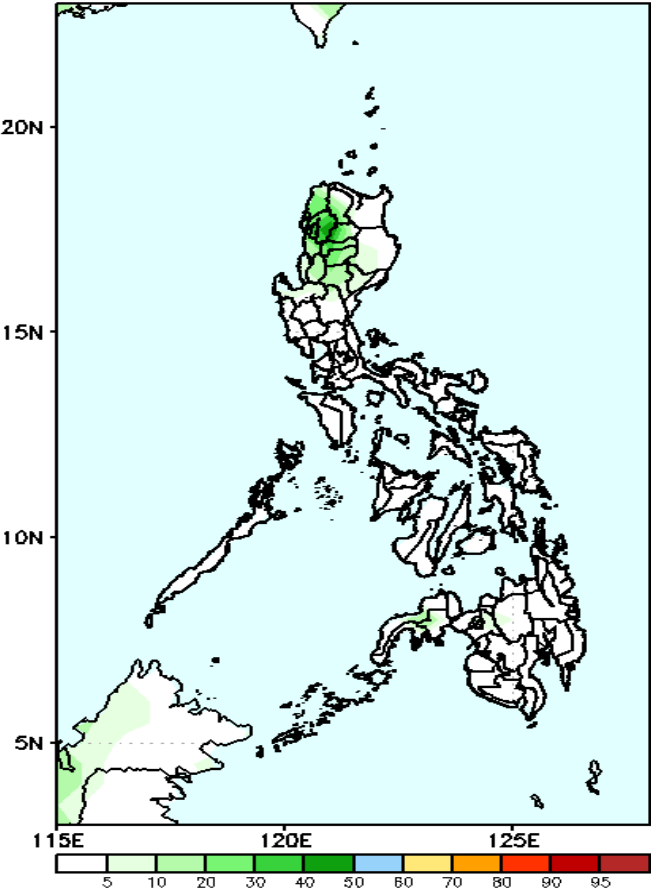


High probability of rainfall to exceed 50mm in most parts of Ilocos and Cordillera Region, Nueva Vizcaya, Tarlac, Zambales, Bukidnon, Lanao provinces and Zamboanga Peninsula while less likely for the rest of the country during the forecast period.

Exceedance Probability > 100/150/200 mm

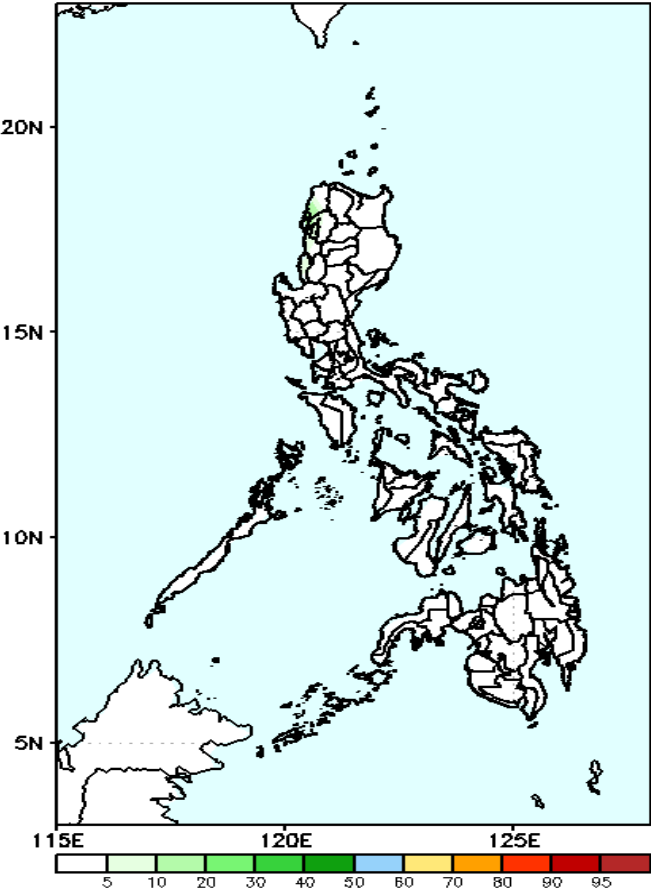
Week 1: Aug 24-30, 2022

GEFS Week-1 Exceedance Prob. > 100mm
Valid: 20220824 - 20220830



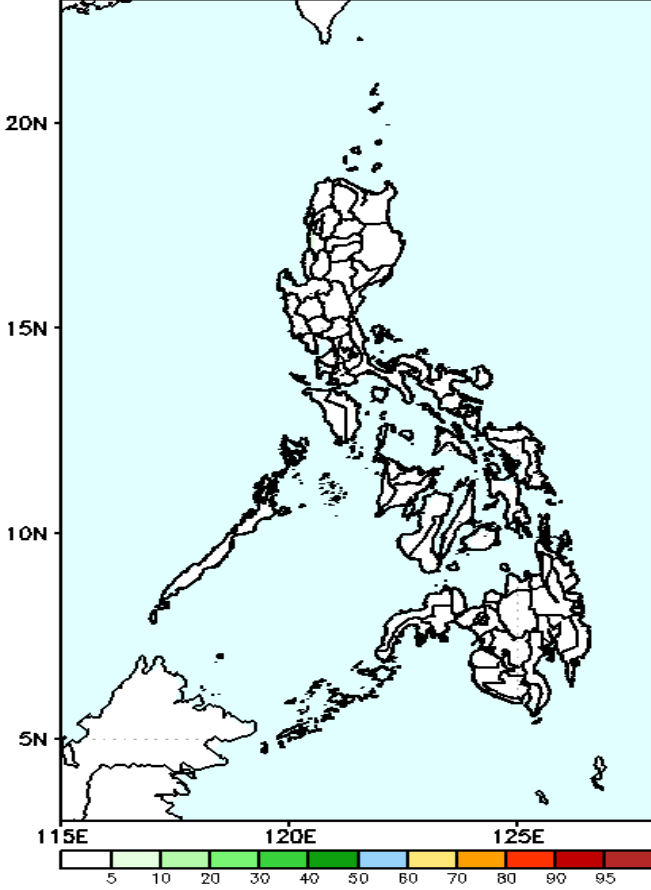
Low probability of rainfall to exceed 100mm in most parts of the country during the forecast period.

GEFS Week-1 Exceedance Prob. > 150mm
Valid: 20220824 - 20220830



Low probability of rainfall to exceed 150mm in most parts of the country during the forecast period.

GEFS Week-1 Exceedance Prob. > 200mm
Valid: 20220824 - 20220830

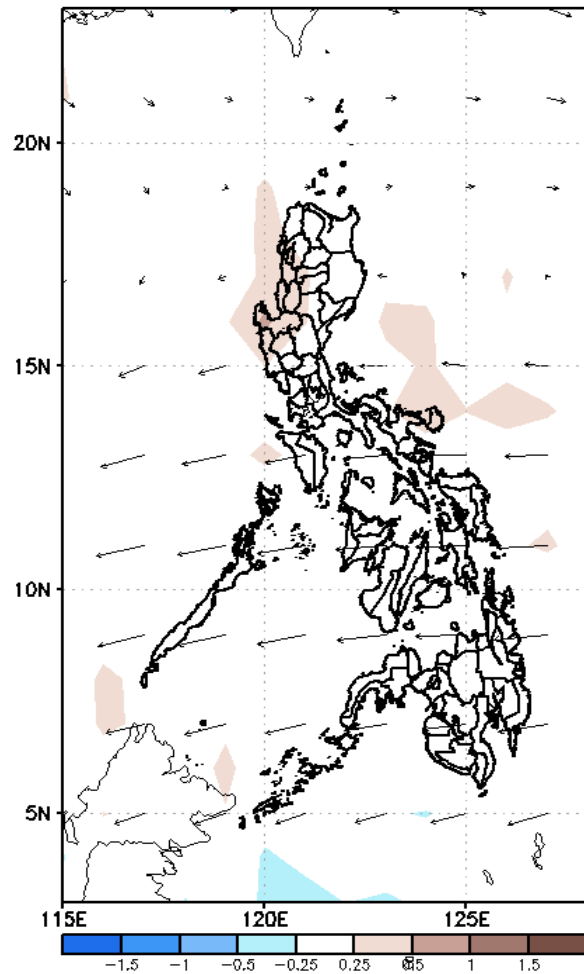


Low probability of rainfall to exceed 200mm in most parts of the country during the forecast period.

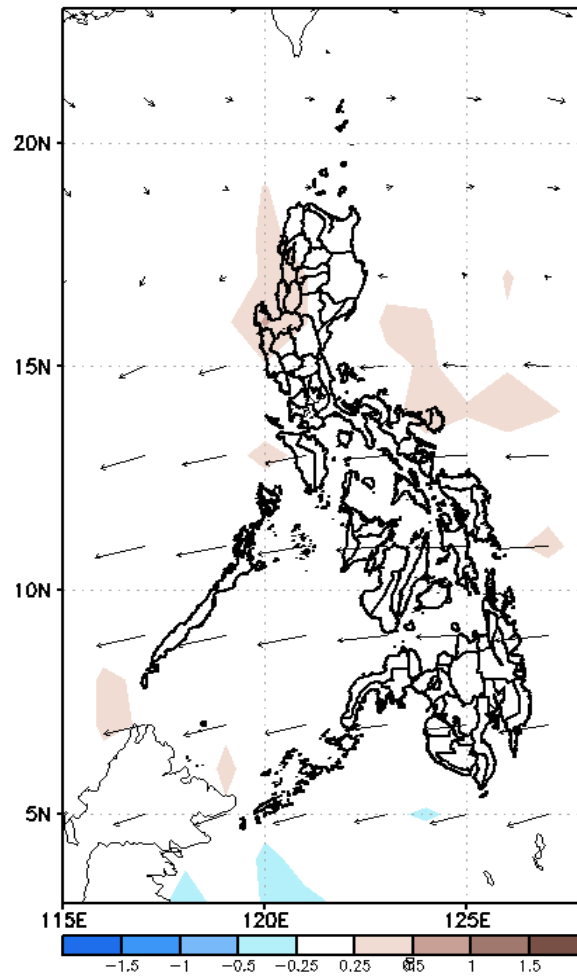
GEFS Week-2 Forecasts: Wind Anomaly Forecast

Week 2: Aug 31- Sep 08, 2022

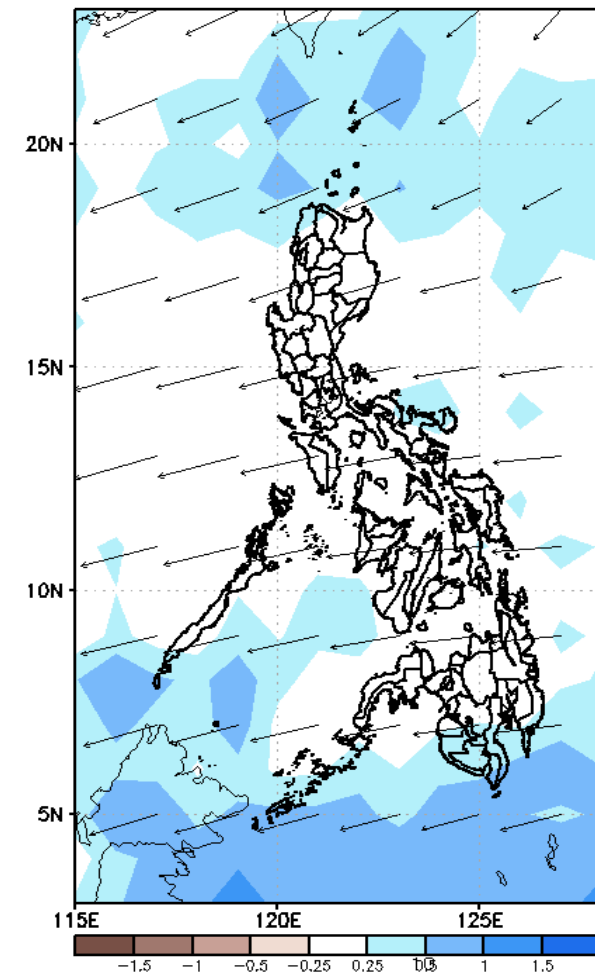
GEFS Week-2 850-hPa Divergence and Wind Anom
Valid: 20220831 - 20220906



GEFS Week-2 700-hPa Divergence and Wind Anom
Valid: 20220831 - 20220906



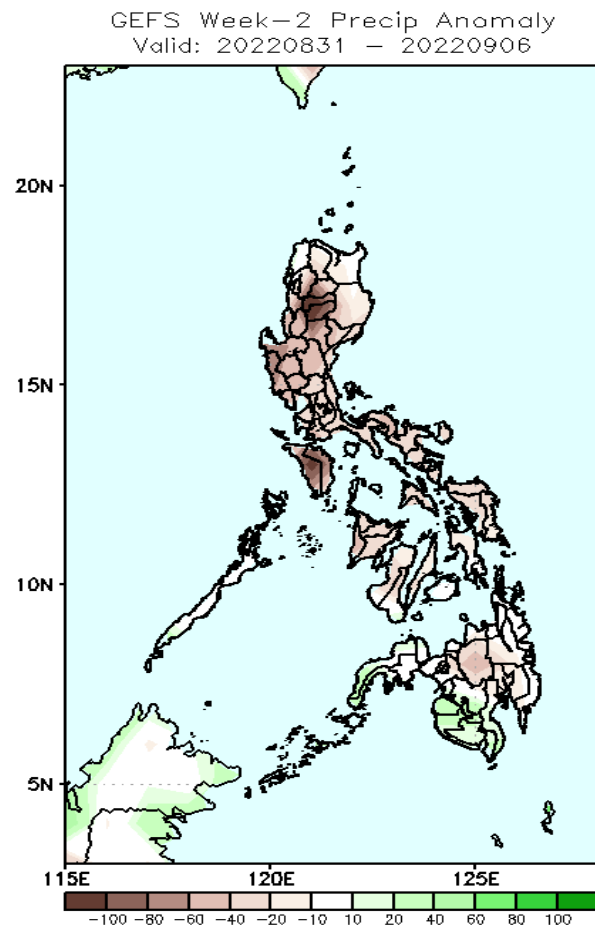
GEFS week-2 200-hPa Divergence and Wind Anom
Valid: 20220831 - 20220906



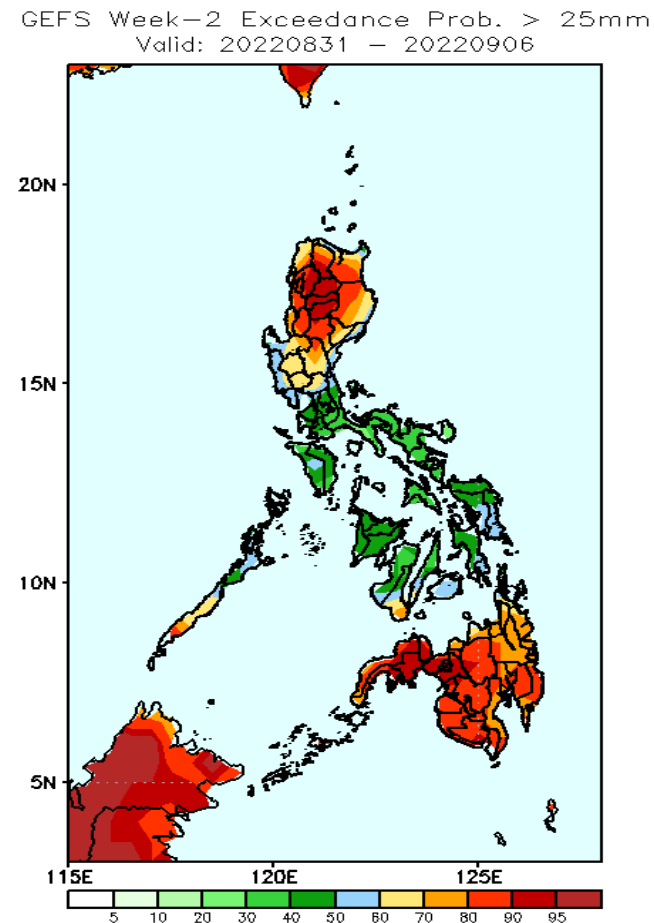
Southwest Monsoon affecting Extreme Northern Luzon while Easterlies affecting the rest of the country during the forecast period.

Precipitation Anomaly and Exceedance Probability > 25/50 mm

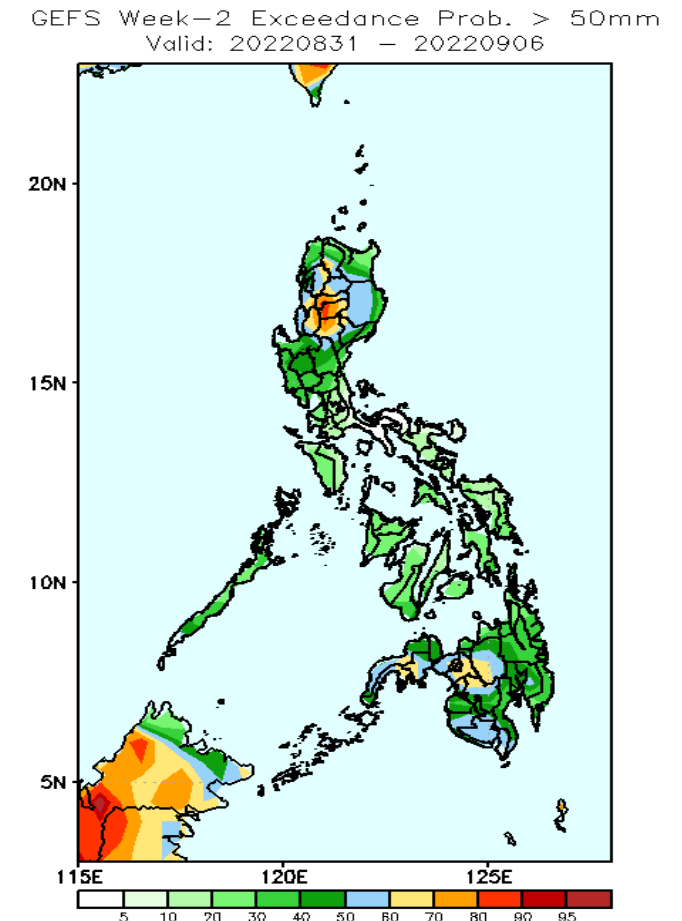
Week 2: Aug 31- Sep 08, 2022



Rainfall deficit of 40-100mm is expected in most parts of the country except in western Mindanao during the forecast period.



High probability of rainfall to exceed 25mm in most parts of Northern and Central Luzon, Palawan, Negros Oriental and most parts of Mindanao while less likely for the rest of the country during the forecast period.

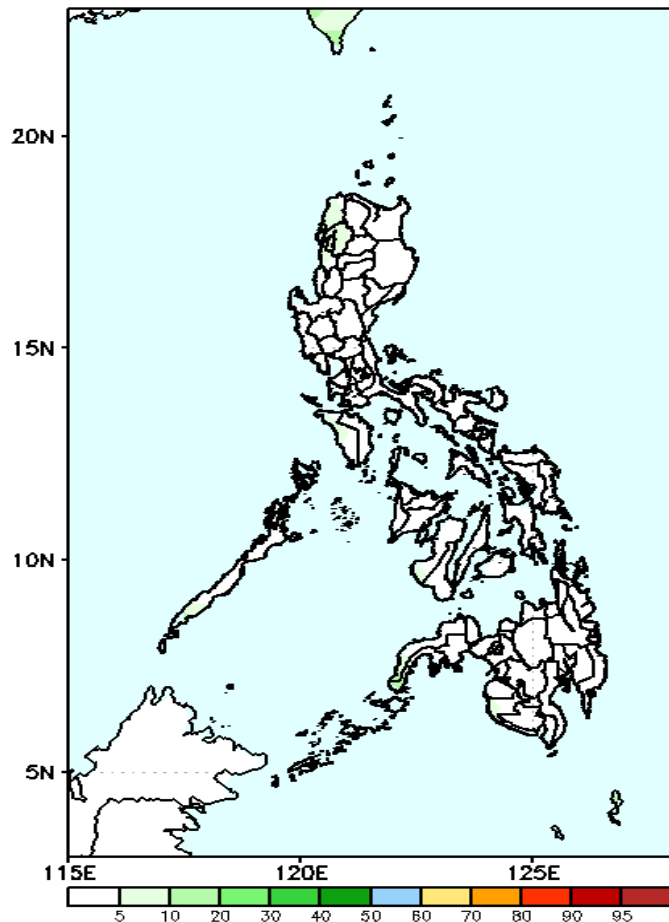


High probability of rainfall to exceed 50mm in most parts of CAR and some areas in Mindanao while less likely for the rest of the country during the forecast period.

Exceedance Probability > 100/150/200 mm

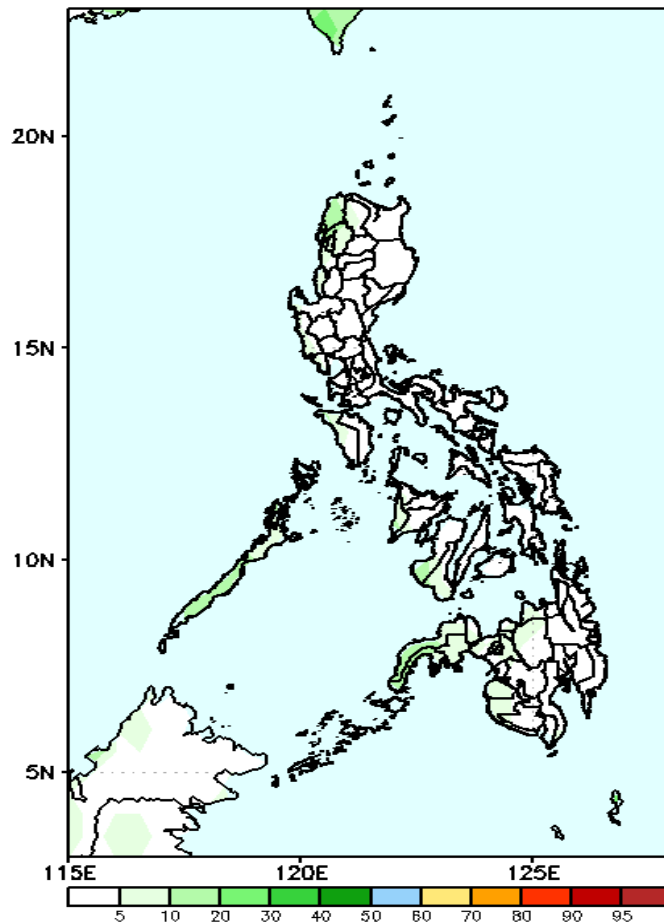
Week 2: Aug 31- Sep 08, 2022

GEFS Week-2 Exceedance Prob. > 200mm
Valid: 20220831 - 20220906



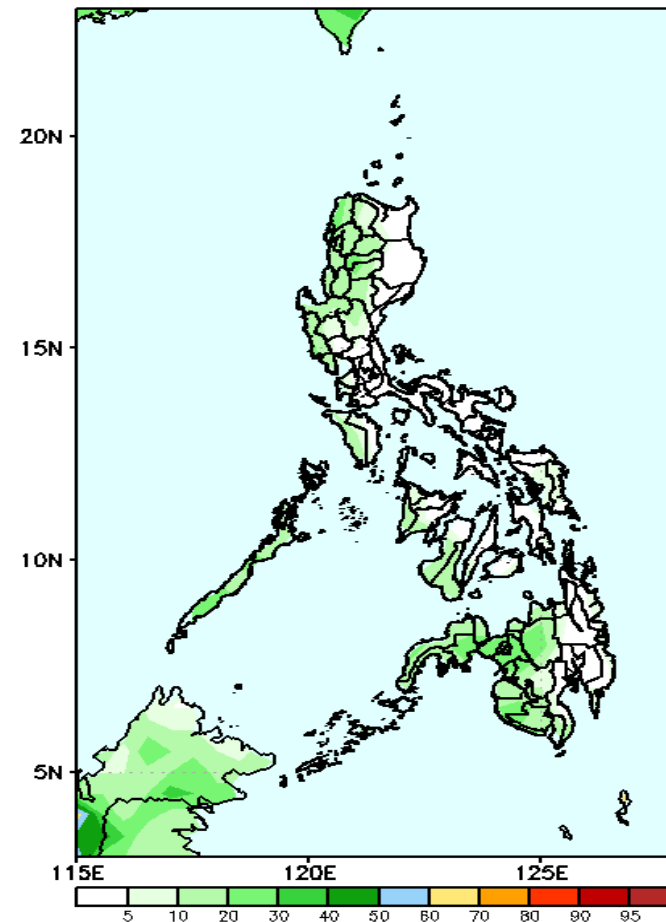
Low probability of rainfall to exceed 100mm in most parts of the country during the forecast period.

GEFS Week-2 Exceedance Prob. > 150mm
Valid: 20220831 - 20220906



Low probability of rainfall to exceed 150mm in most parts of the country during the forecast period.

GEFS Week-2 Exceedance Prob. > 100mm
Valid: 20220831 - 20220906

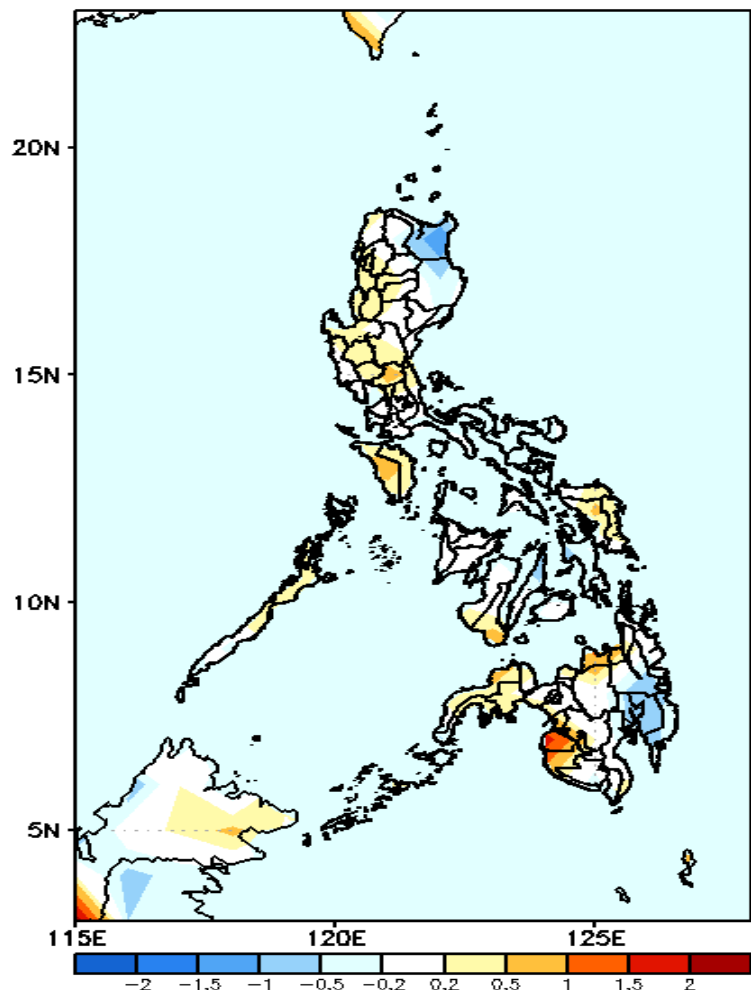


Low probability of rainfall to exceed 200mm in most parts of the country during the forecast period.



GEFS Week-1 & 2 Forecasts: T2m Anomaly

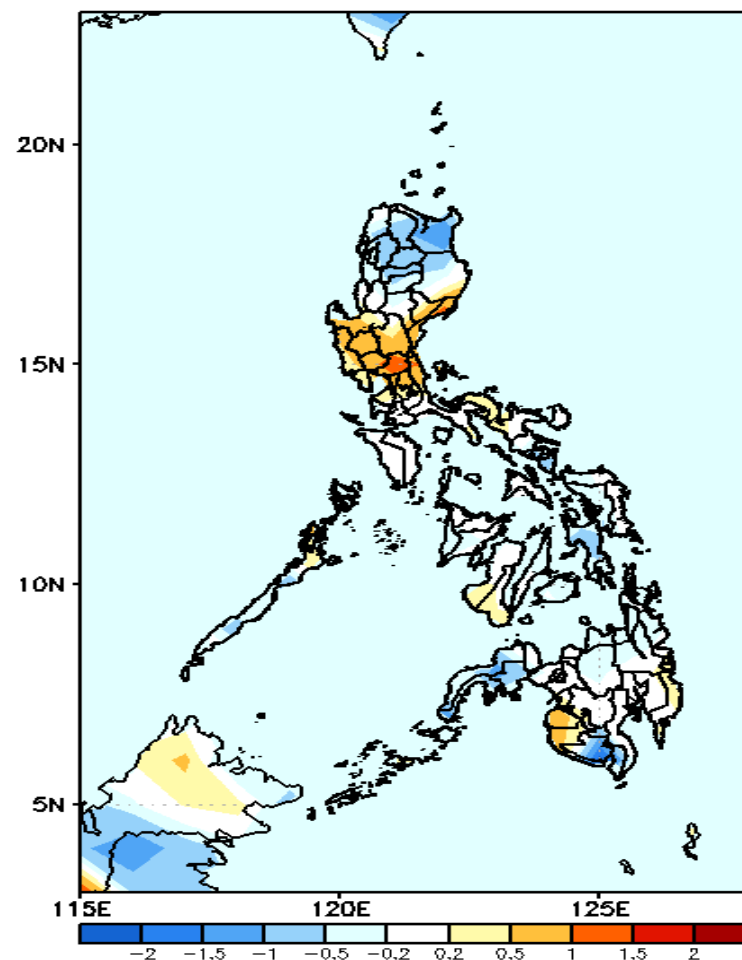
GEFS Week-1 T2m Anomaly
Valid: 20220824 – 20220830



2m Temperature Week 1: Aug 24-30, 2022

Near to slightly warmer than average surface air temperature will likely experience in most parts of the country except in Cagayan and Davao Region where slightly cooler than average temp is expected during the forecast period.

GEFS Week-2 T2m Anomaly
Valid: 20220831 – 20220906



2m Temperature Week 2: Aug 31- Sep 08, 2022

Near to slightly cooler than average surface air temperature will likely experience in northern Luzon, Leyte, Zamboanga Peninsula and South Cotabato while slightly warmer to warmer than average temperature in Central & Southern Luzon, Negros Island, Maguindanao and Sultan Kudarat during the forecast period.

