



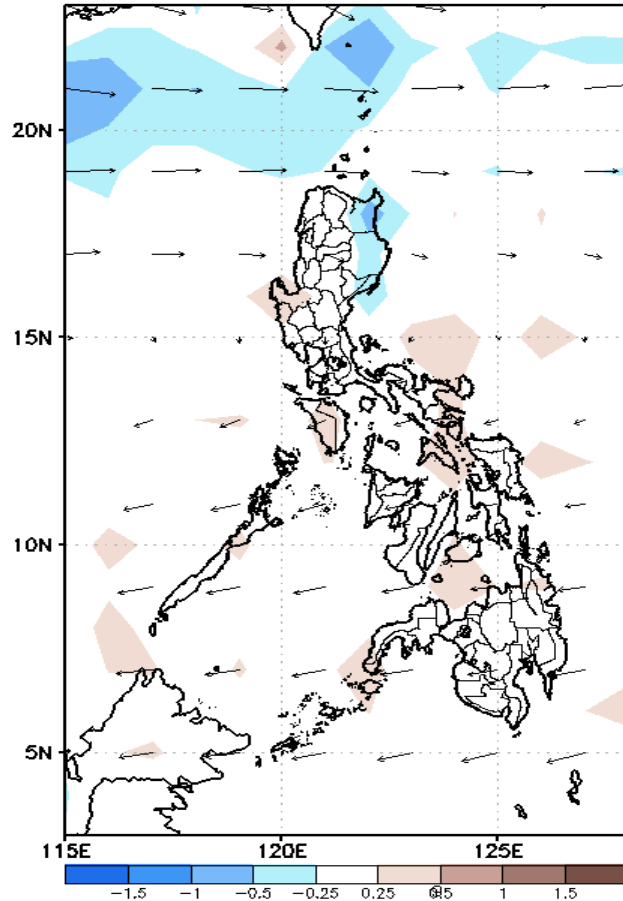
Week 1 & Week 2 Forecast for the Philippines using GEFS Model



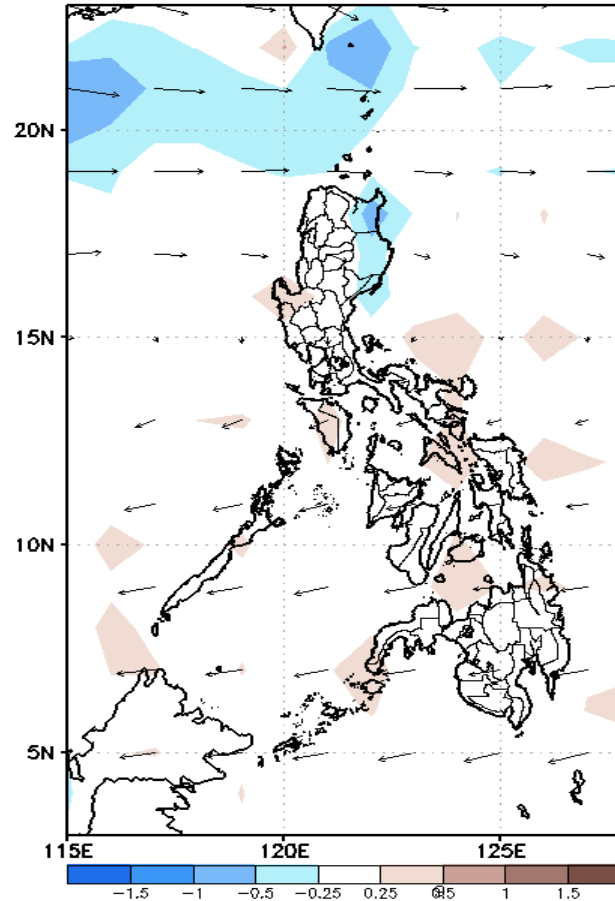
GEFS Week-1 Forecasts: Divergence & Wind Anomaly

Week 1: June 24-30, 2021

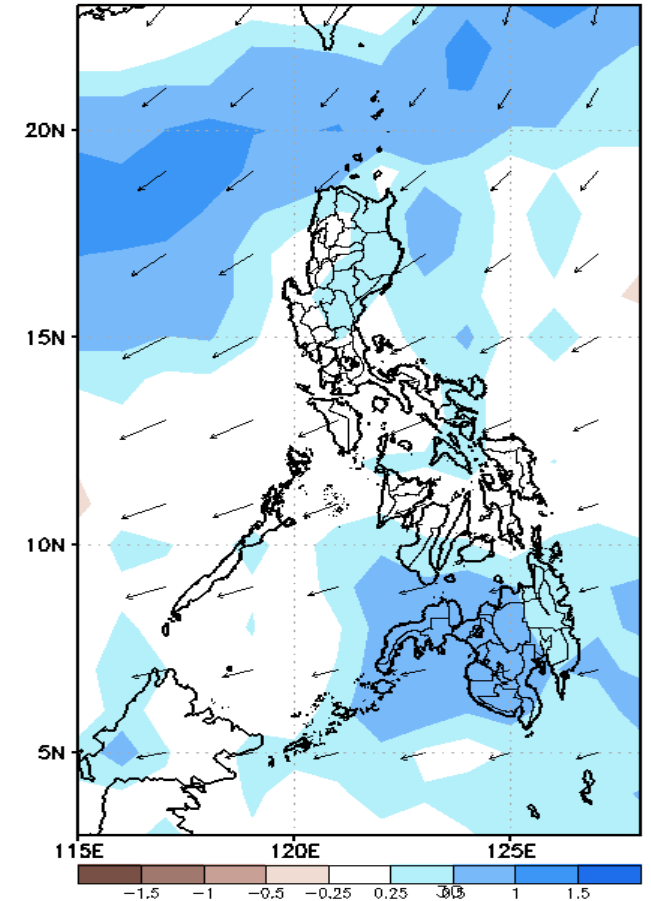
GEFS Week-1 850-hPa Divergence and Wind Anom.
Valid: 20210624 - 20210630



GEFS Week-1 700-hPa Divergence and Wind Anom.
Valid: 20210624 - 20210630



GEFS Week-1 200-hPa Divergence and Wind Anom.
Valid: 20210624 - 20210630

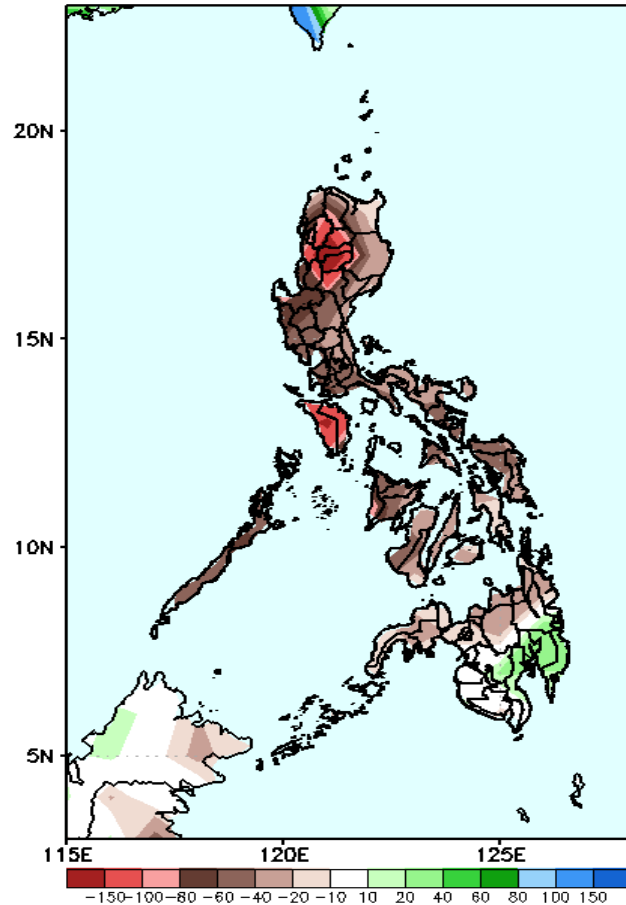


Upper and low level Divergence suggest likelihood of precipitation in most parts of Northern and Central Luzon and Mindanao. Southwest monsoon affecting Western Luzon while Easterlies affecting the rest of the country. Attributing to warmer temperature and higher heat index; with humid environment(especially in the western section of the country) during the forecast period.

Precipitation Anomaly and Exceedance Probability > 25/50 mm

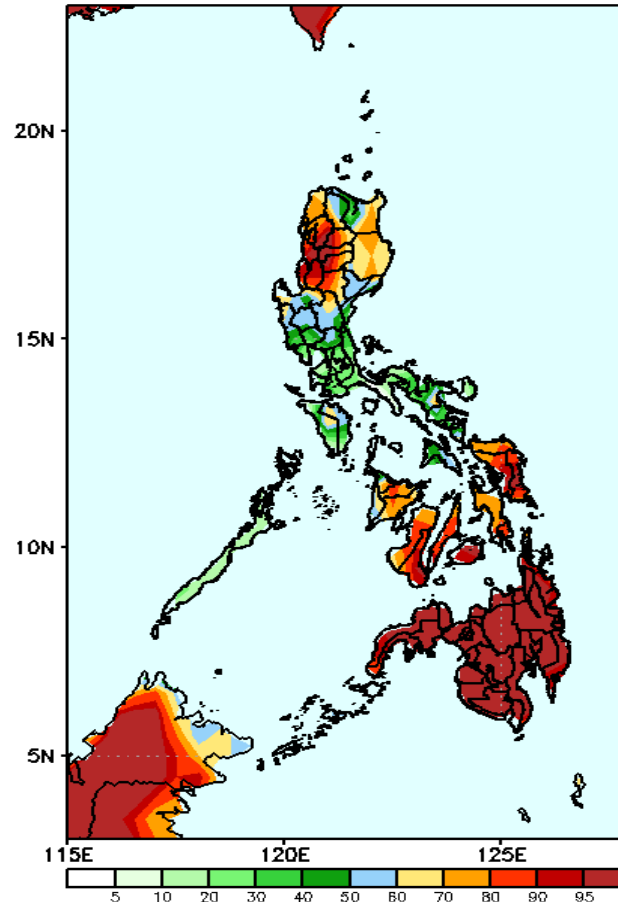
Week 1: June 24-30, 2021

GEFS Week-1 Precip Anomaly
Valid: 20210624 - 20210630



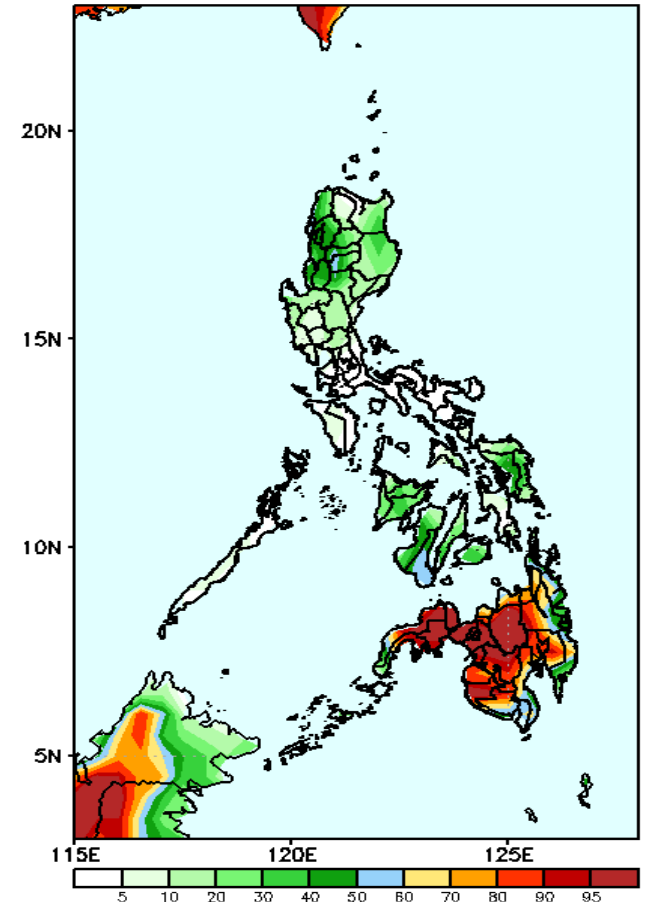
Rainfall deficit of up to 150mm is expected in Cordillera Region and Mindoro and 40-80mm for the rest of the country except for Davao Region with 40-60mm increase of rainfall during the forecast period.

GEFS Week-1 Exceedance Prob. > 25mm
Valid: 20210624 - 20210630



High probability of rainfall to exceed 25mm in Northern and Central Luzon and in most parts of Visayas and Mindanao while less likely for the rest of the country during the forecast period.

GEFS Week-1 Exceedance Prob. > 50mm
Valid: 20210624 - 20210630



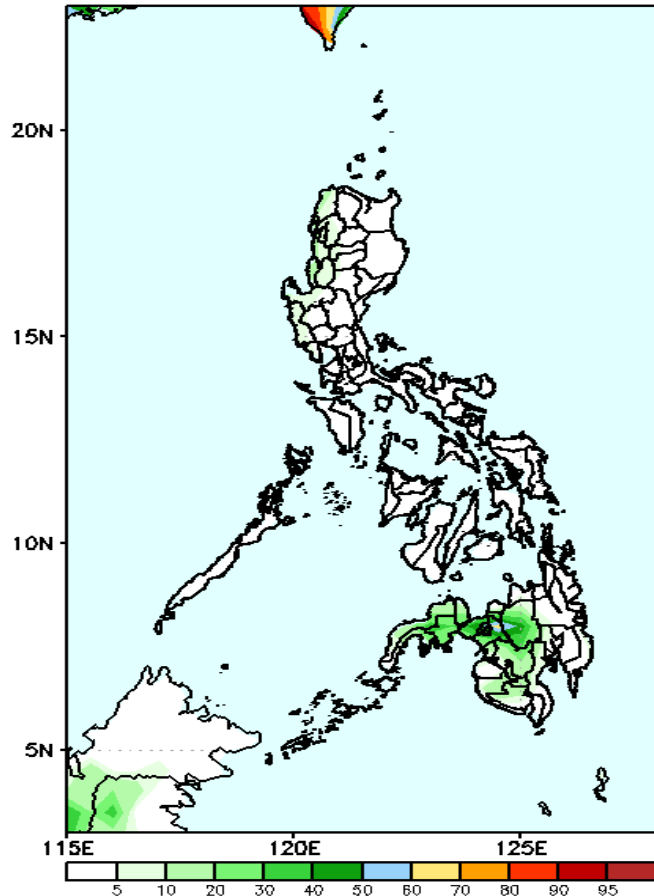
High probability of rainfall to exceed 50mm in most parts of Mindanao while less likely for the rest of the country during the forecast period.



Exceedance Probability > 100/150/200 mm

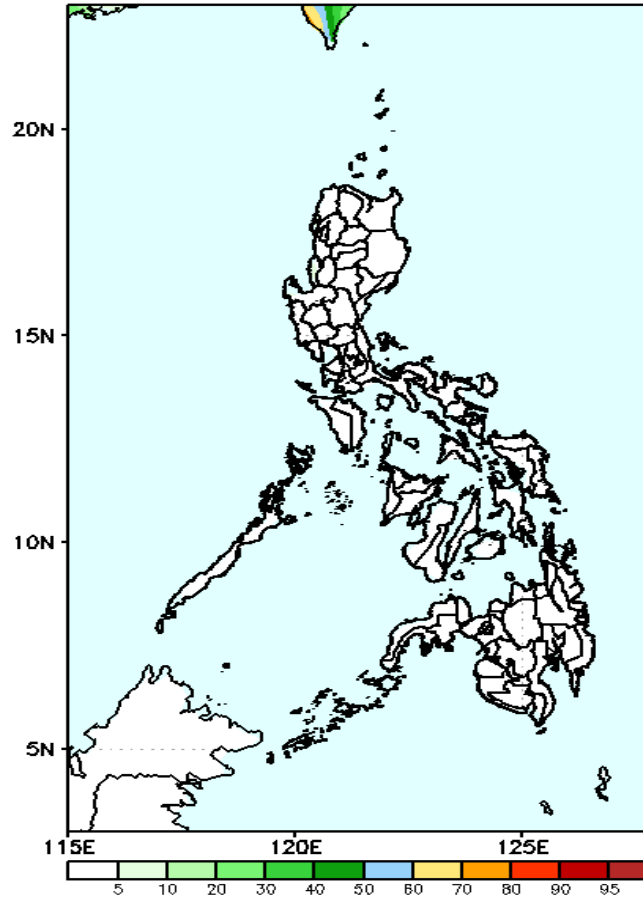
Week 1: June 24-30, 2021

GEFS Week-1 Exceedance Prob. > 100mm
Valid: 20210624 - 20210630



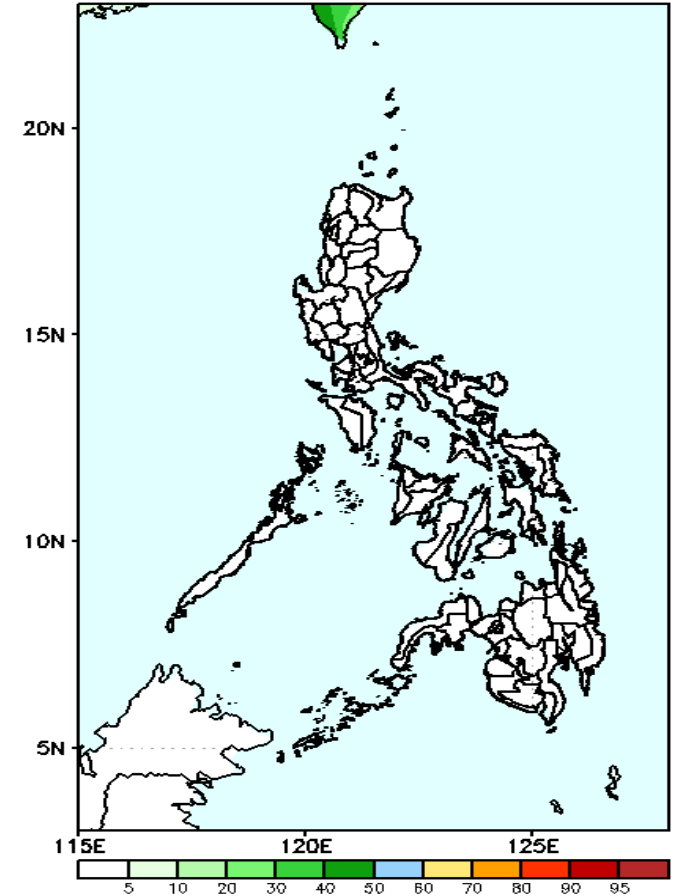
Less probability of rainfall to exceed 100mm in most parts of the country during the forecast period.

GEFS Week-1 Exceedance Prob. > 150mm
Valid: 20210624 - 20210630



Less probability of rainfall to exceed 150mm in most parts of the country during the forecast period.

GEFS Week-1 Exceedance Prob. > 200mm
Valid: 20210624 - 20210630



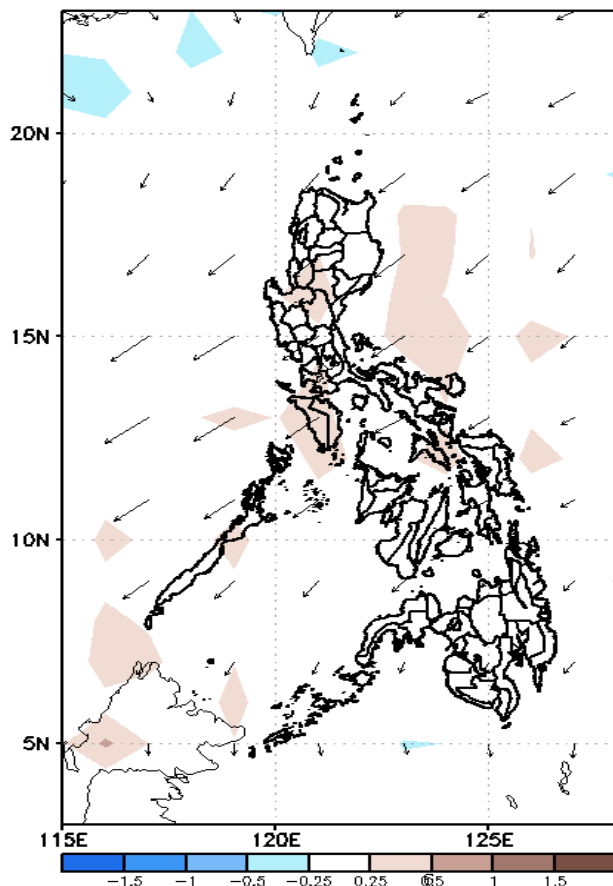
Less probability of rainfall to exceed 200mm in most parts of the country during the forecast period.



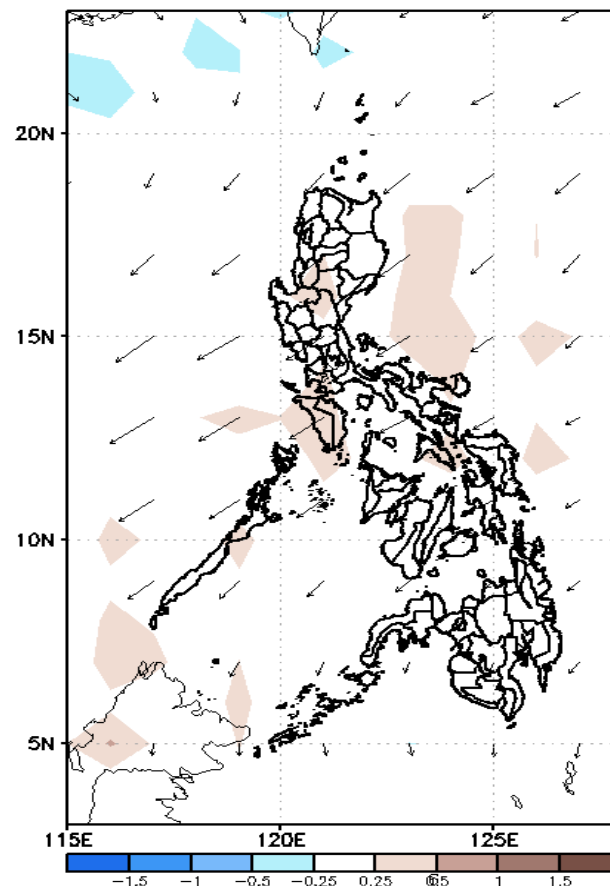
GEFS Week-2 Forecasts: Divergence & Wind Anomaly

Week 2: July 01-07, 2021

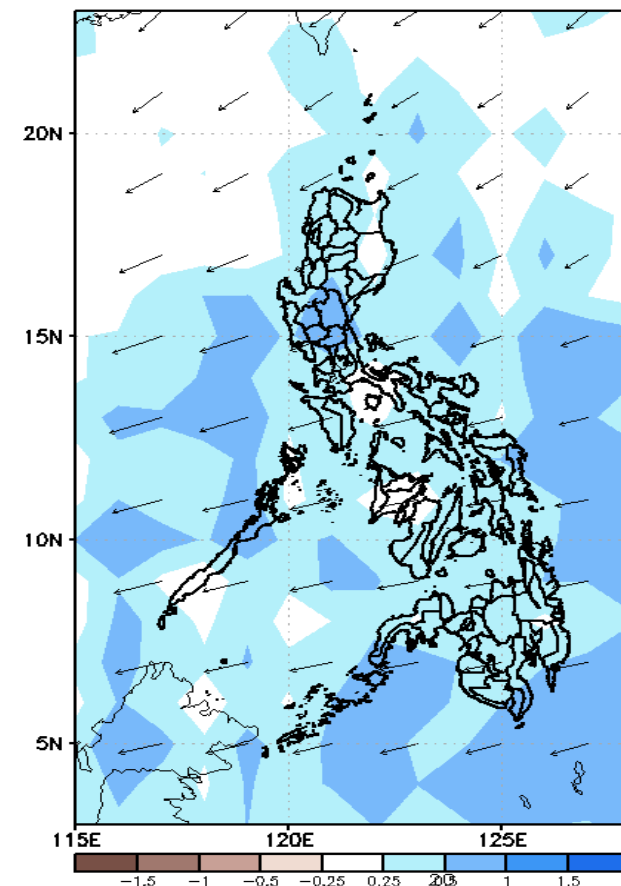
GEFS Week-2 850-hPa Divergence and Wind Anom
Valid: 20210701 - 20210707



GEFS Week-2 700-hPa Divergence and Wind Anom
Valid: 20210701 - 20210707



GEFS week-2 200-hPa Divergence and Wind Anom
Valid: 20210701 - 20210707

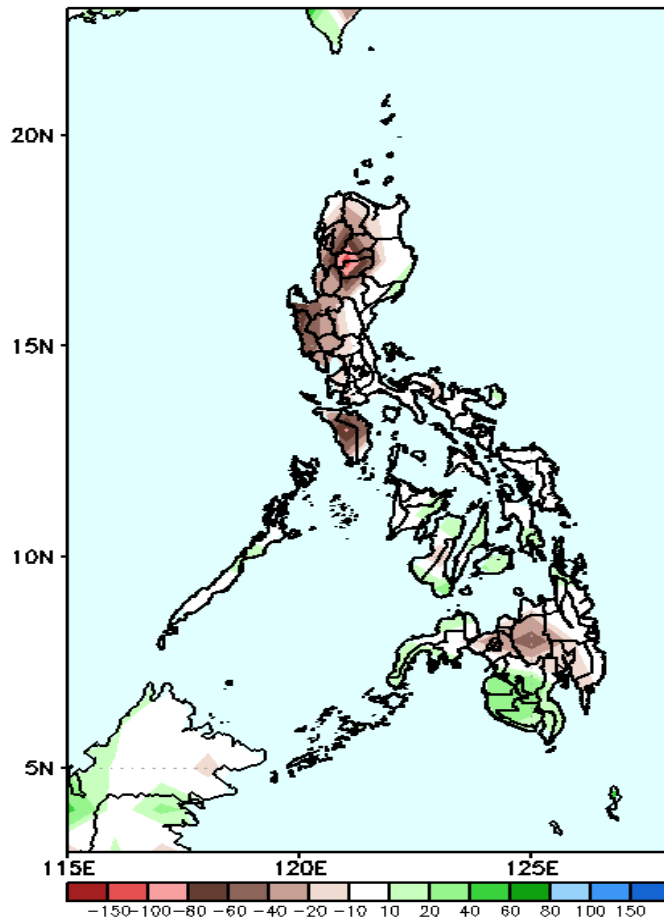


Upper and low level Divergence suggest likelihood of precipitation in most parts of the country. Southwest monsoon affecting Western Philippines while Easterlies affecting the remaining parts of the country. Attributing to warmer temperature and higher heat index; with humid environment(especially in the western section of the country) during the forecast period.

Precipitation Anomaly and Exceedance Probability > 25/50 mm

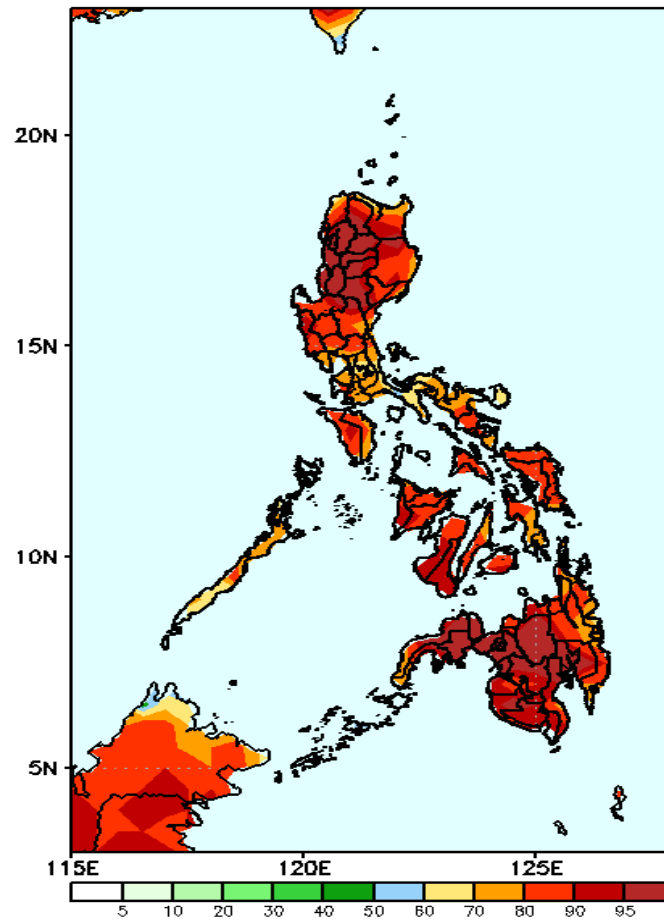
Week 2: July 01-07, 2021

GEFS Week-2 Precip Anomaly
Valid: 20210701 - 20210707



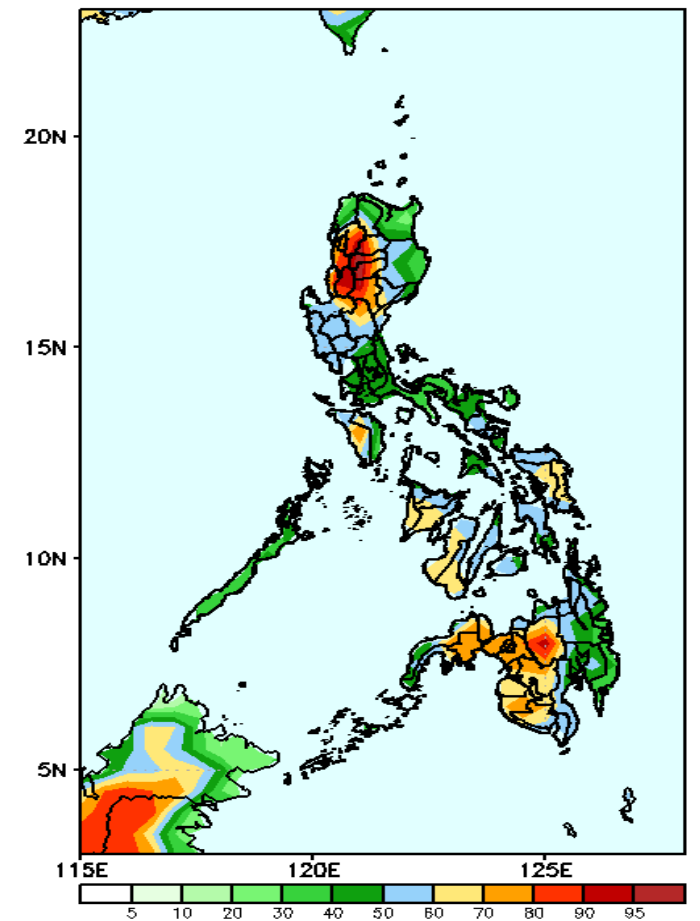
Rainfall deficit of 40-100mm is expected in most parts of the country (specially in Cordillera Region) during the forecast period.

GEFS Week-2 Exceedance Prob. > 25mm
Valid: 20210701 - 20210707



High probability of rainfall to exceed 25mm in most parts of the country during the forecast period.

GEFS Week-2 Exceedance Prob. > 50mm
Valid: 20210701 - 20210707

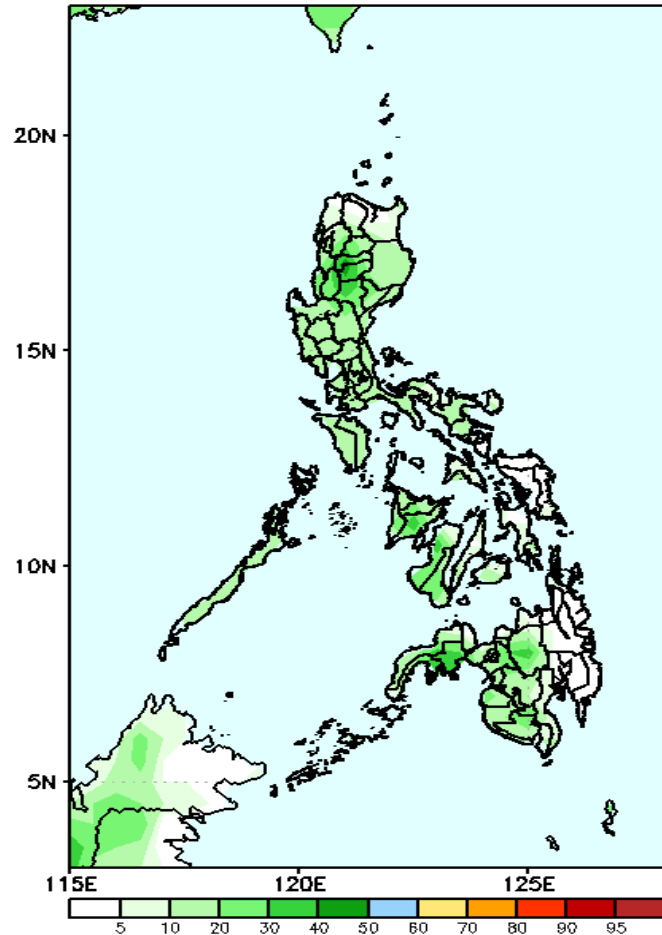


High probability of rainfall to exceed 50mm in most parts of CAR, Ilocos Region, Occidental Mindoro, Samar provinces and western parts of Visayas and Mindanao while less likely for rest of the country during the forecast period.

Exceedance Probability > 100/150/200 mm

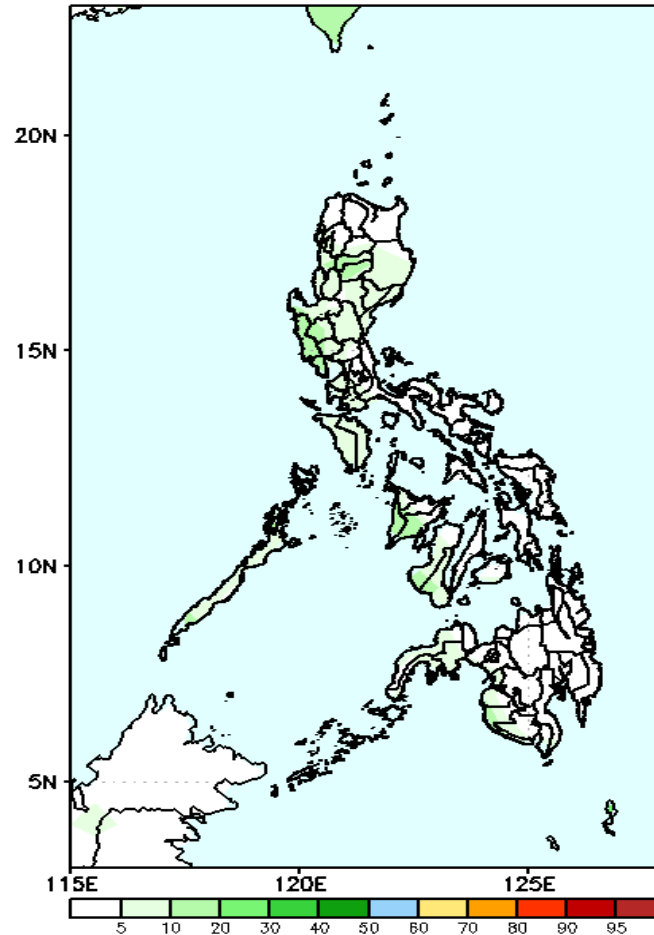
Week 2: July 01-07, 2021

GEFS Week-2 Exceedance Prob. > 100mm
Valid: 20210701 – 20210707



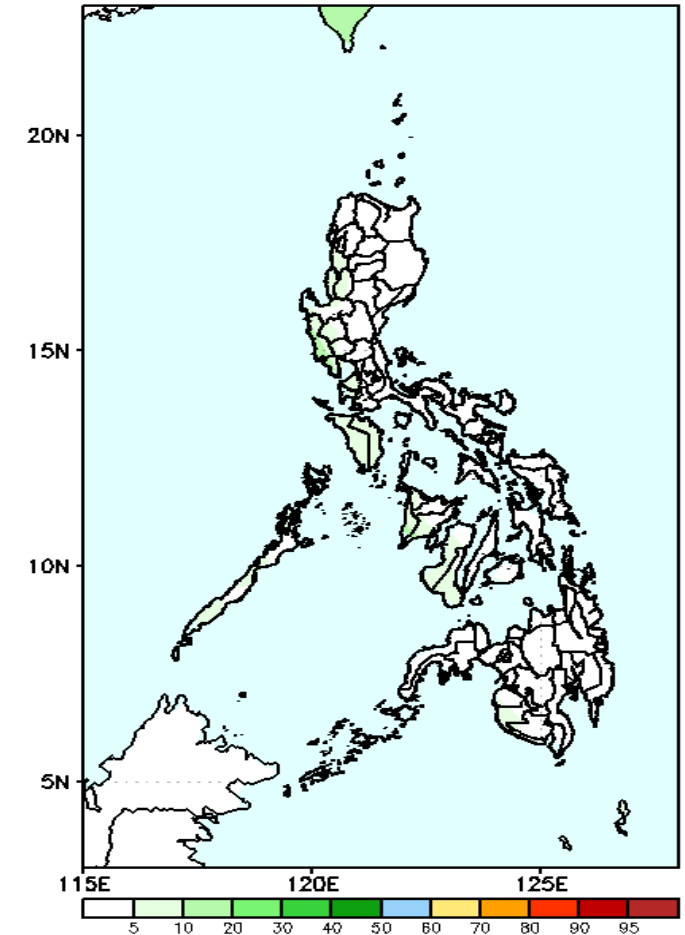
Less probability of rainfall to exceed 100mm in most parts of the country during the forecast period.

GEFS Week-2 Exceedance Prob. > 150mm
Valid: 20210701 – 20210707



Less probability of rainfall to exceed 150mm in most parts of the country during the forecast period.

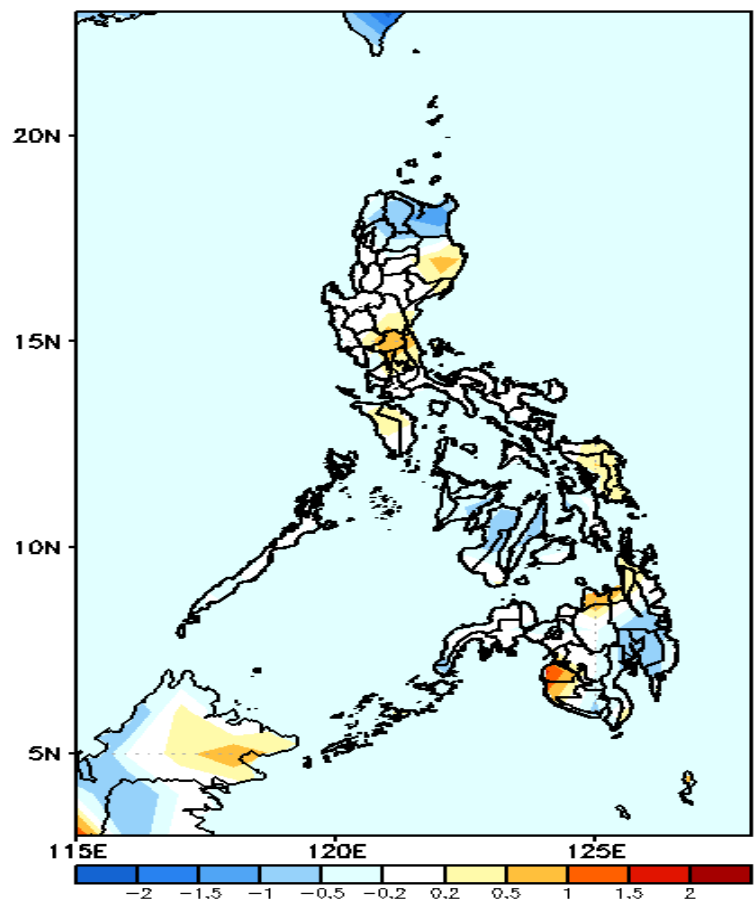
GEFS Week-2 Exceedance Prob. > 200mm
Valid: 20210701 – 20210707



Less probability of rainfall to exceed 200mm in most parts of the country during the forecast period.

GEFS Week-1 & 2 Forecasts: T2m Anomaly

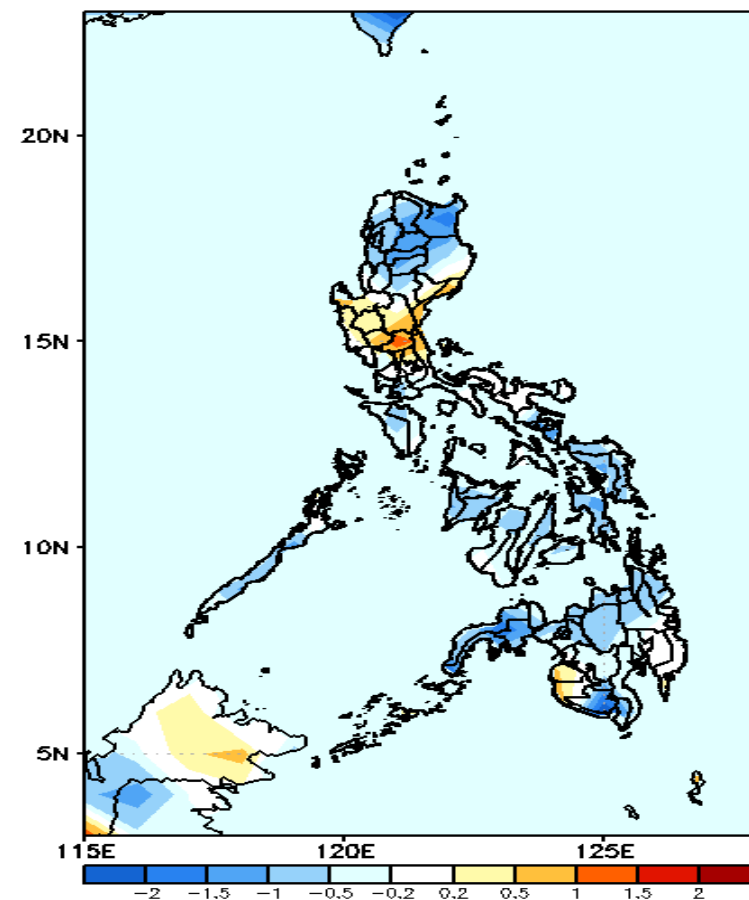
GEFS Week-1 T2m Anomaly
Valid: 20210624 - 20210630



2m Temperature Week 1: June 24-30, 2021

Slightly cooler to cooler than average surface air temperature will likely experience in Northern Luzon, western Visayas and Davao region while average to slightly warmer for the rest of the country during the forecast period.

GEFS Week-2 T2m Anomaly
Valid: 20210701 - 20210707



2m Temperature Week 2: July 01-07, 2021

Slightly cooler to cooler than average surface air temperature will likely experience in most parts of the country except in Pangasinan, Quirino, Central Luzon, Maguindanao and Sultan Kudarat where slightly warmer to warmer than average temperature is expected during the forecast period.