



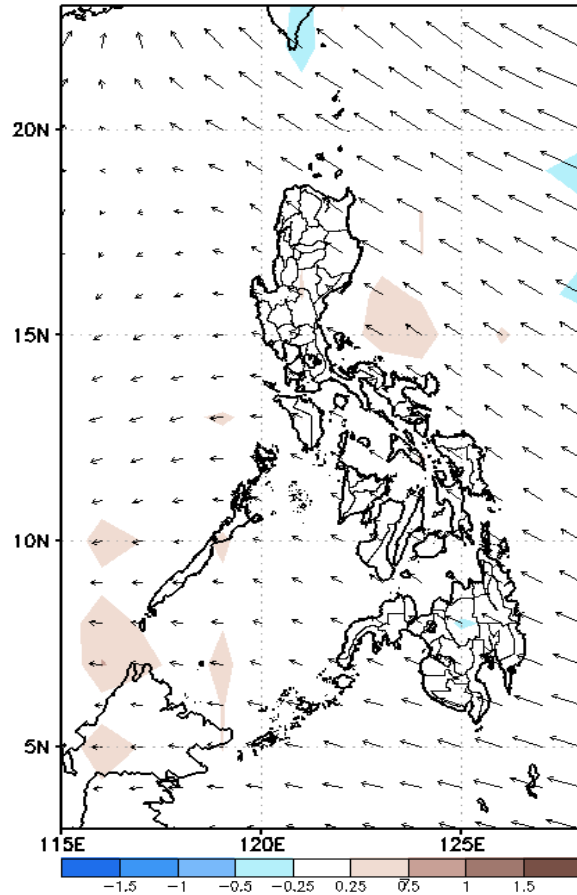
Week 1 & Week 2 Forecast for the Philippines using GEFS Model



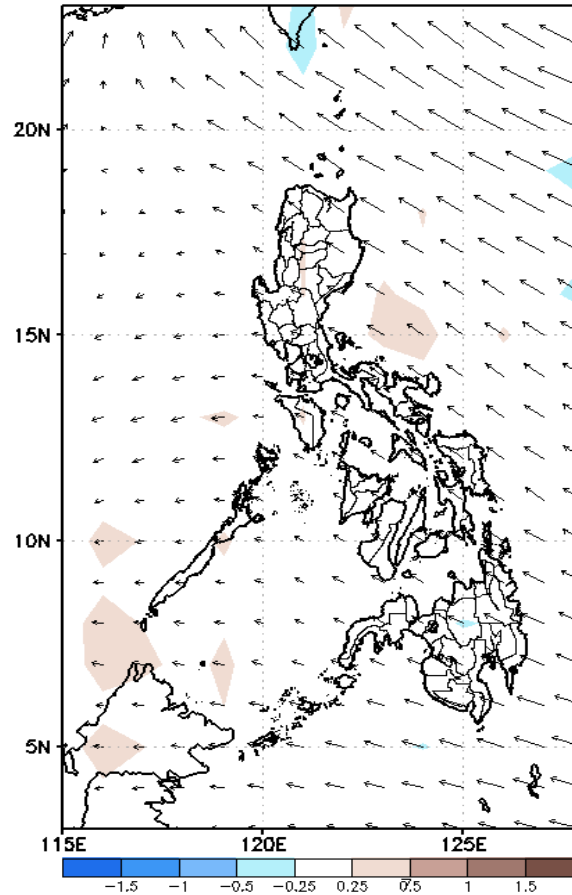
GEFS Week-1 Forecasts: Wind Anomaly Forecast

Week 1 Jun 24-30, 2022

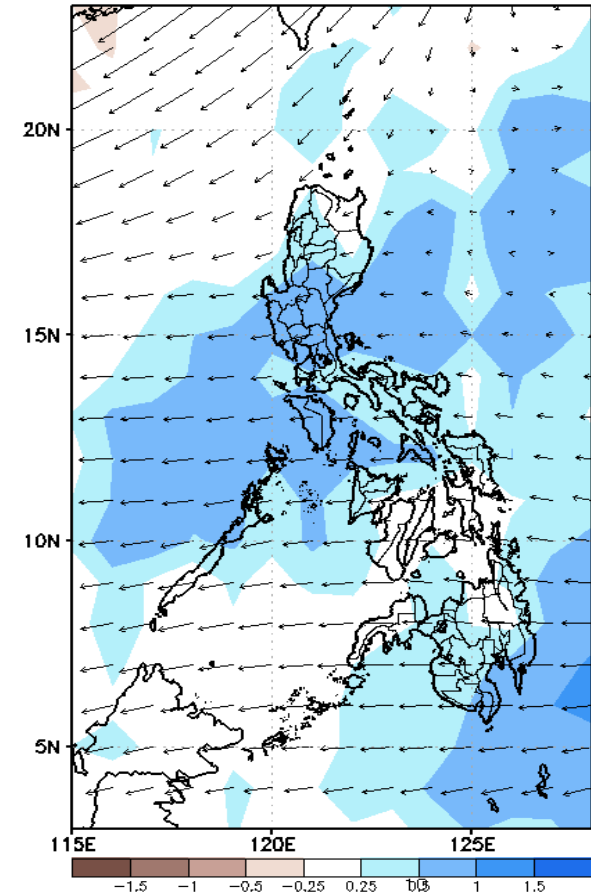
GEFS Week-1 700-hPa Divergence and Wind Anomaly
Valid: 20220624 - 20220630



GEFS Week-1 850-hPa Divergence and Wind Anomaly
Valid: 20220624 - 20220630



GEFS Week-1 200-hPa Divergence and Wind Anom.
Valid: 20220624 - 20220630

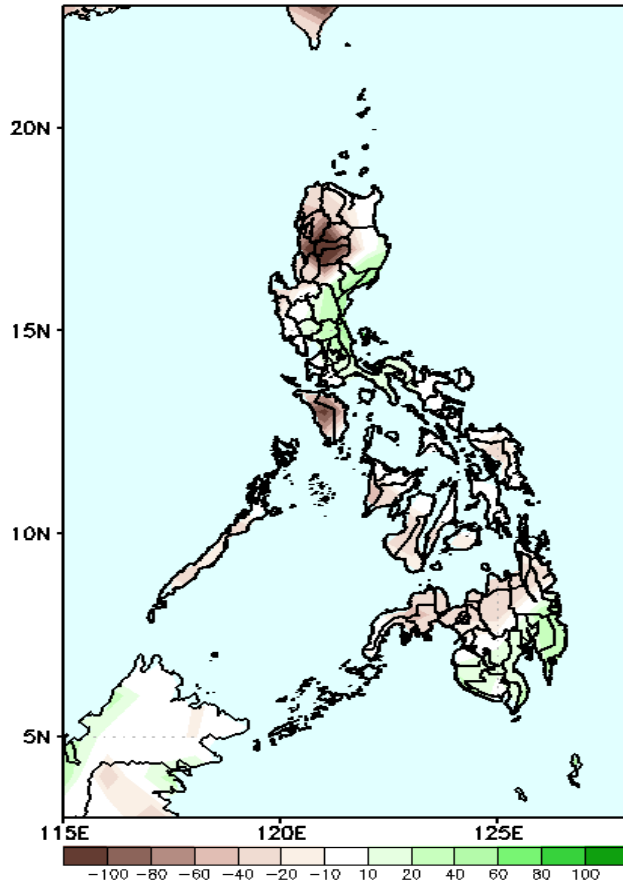


Easterlies affecting most parts of the country attributing to high likelihood of localized thunderstorms in most parts of the country during the forecast period

Precipitation Anomaly and Exceedance Probability > 25/50 mm

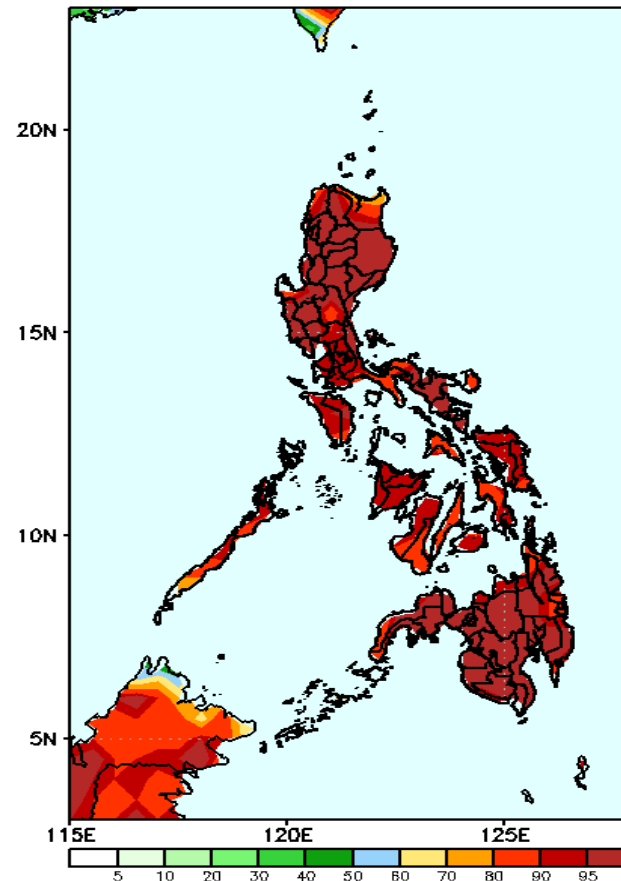
Week 1: Jun 24-30, 2022

GEFS Week-1 Precip Anomaly
Valid: 20220624 - 20220630



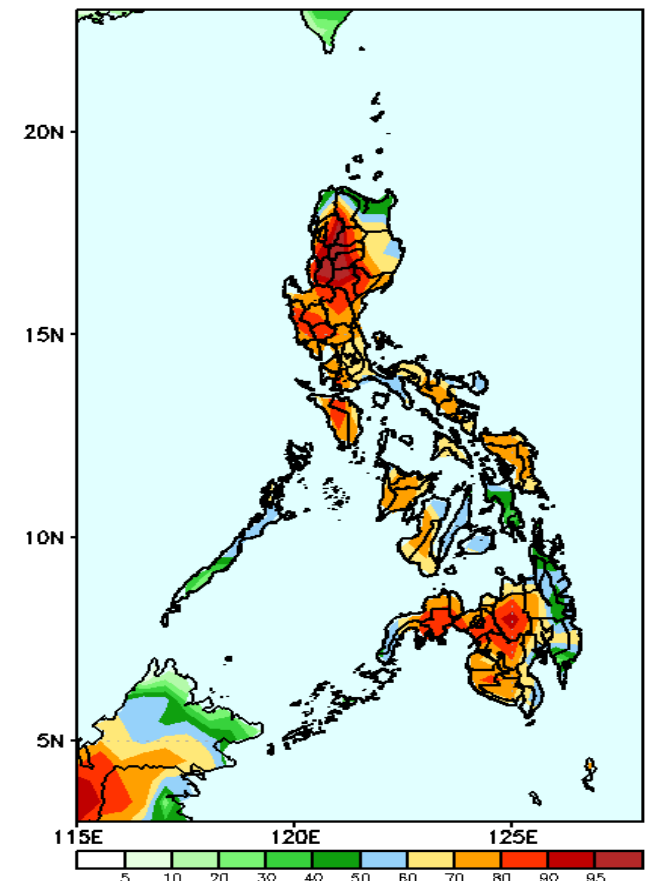
Rainfall deficit of more than 100mm is expected in Ilocos & Cordillera Region & Mindoro, 40-80mm for the rest of the country except in Davao Region, Aurora, Quirino, Nueva Ecija, Bulacan and parts of Quezon (20-60mm increase of rainfall) during the forecast period.

GEFS Week-1 Exceedance Prob. > 25mm
Valid: 20220624 - 20220630



High probability of rainfall to exceed 25mm in most parts of the country during the forecast period.

GEFS Week-1 Exceedance Prob. > 50mm
Valid: 20220624 - 20220630

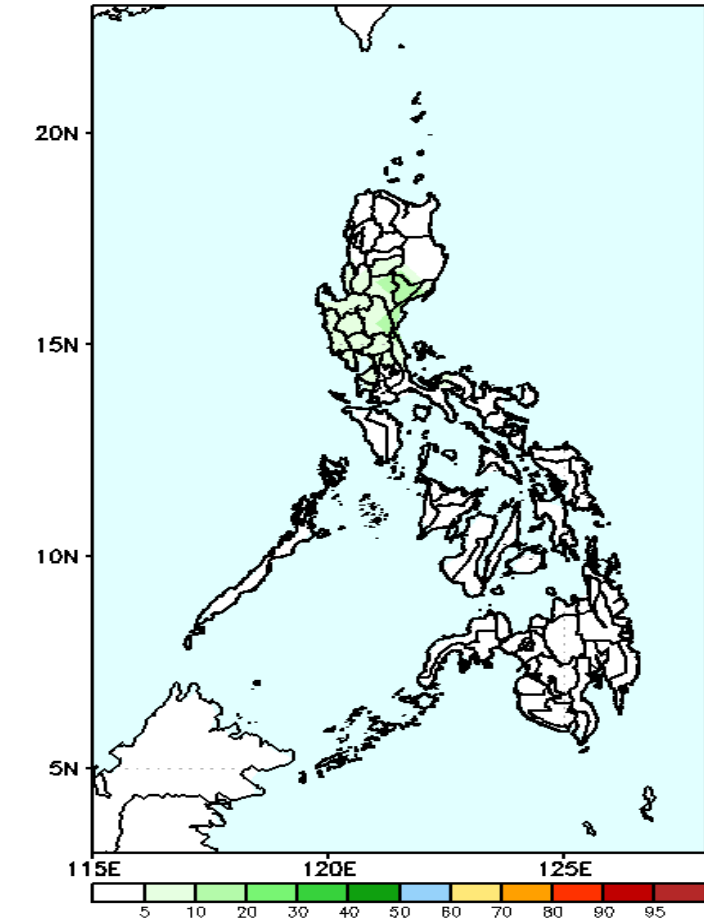


High probability of rainfall to exceed 50mm in most parts of the country except in northern part of Ilocos Norte, Apayao and Cagayan, Leyte provinces, CARAGA & Davao Region in during the forecast period.

Exceedance Probability > 100/150/200 mm

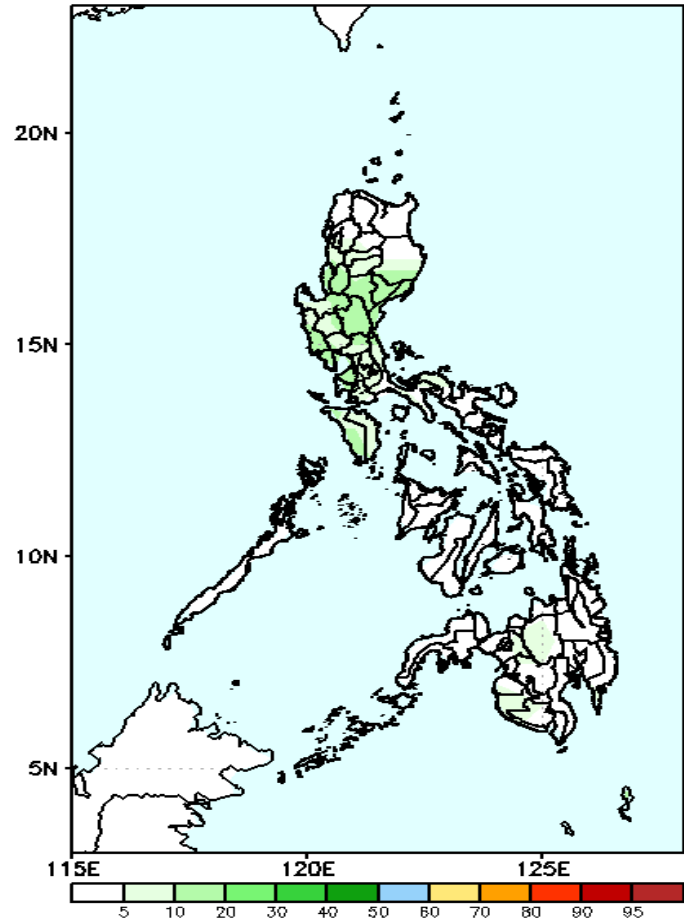
Week 1: Jun 24-30, 2022

GEFS Week-1 Exceedance Prob. > 200mm
Valid: 20220624 - 20220630



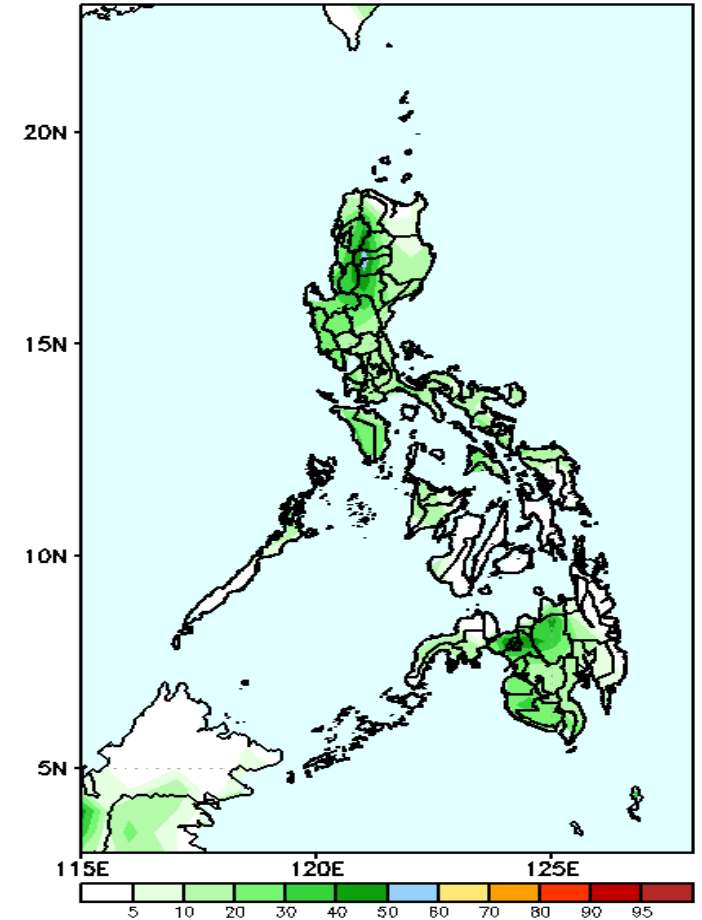
Low probability of rainfall to exceed 100mm in most parts of the country during the forecast period.

GEFS Week-1 Exceedance Prob. > 150mm
Valid: 20220624 - 20220630



Low probability of rainfall to exceed 150mm in most parts of the country during the forecast period.

GEFS Week-1 Exceedance Prob. > 100mm
Valid: 20220624 - 20220630



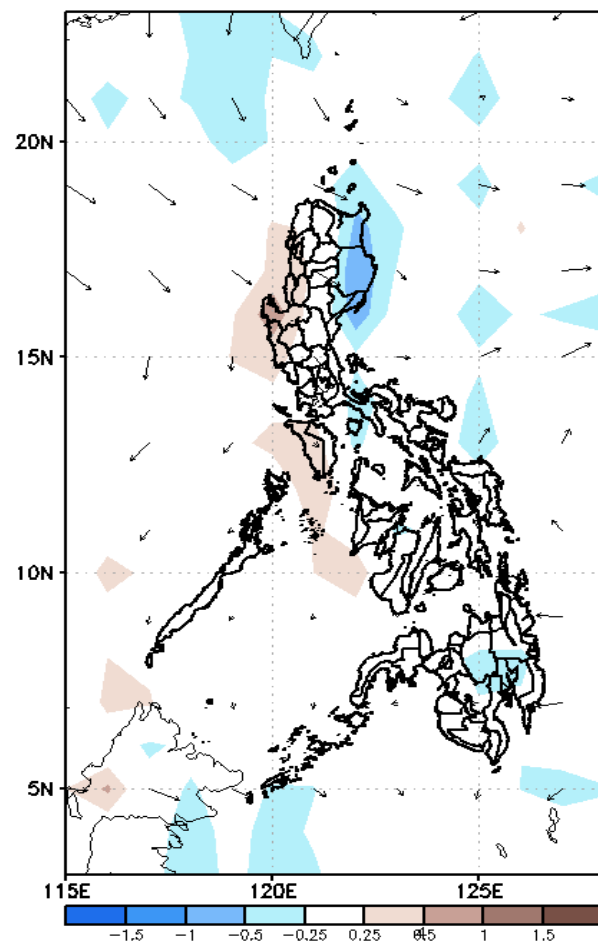
Low probability of rainfall to exceed 200mm in most parts of the country during the forecast period.



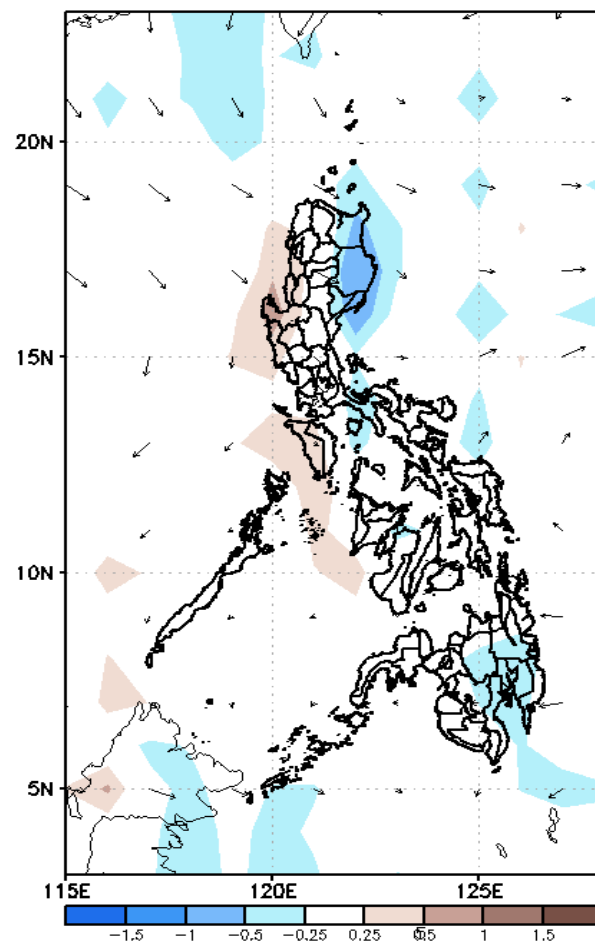
GEFS Week-2 Forecasts: Wind Anomaly Forecast

Week 2: Jul 01- 07, 2022

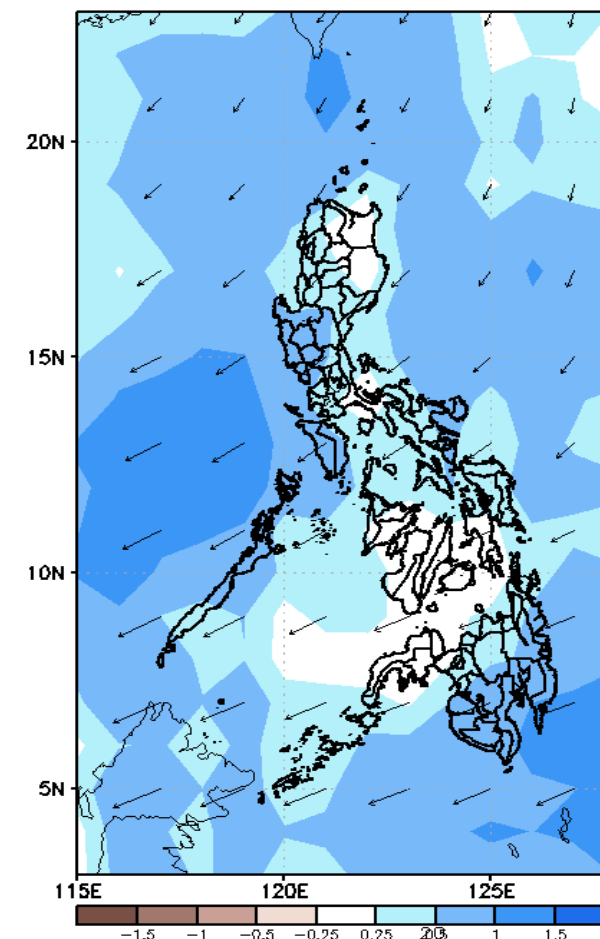
GEFS Week-2 850-hPa Divergence and Wind Anom
Valid: 20220701 - 20220707



GEFS Week-2 700-hPa Divergence and Wind Anom
Valid: 20220701 - 20220707



GEFS week-2 200-hPa Divergence and Wind Anom
Valid: 20220701 - 20220707

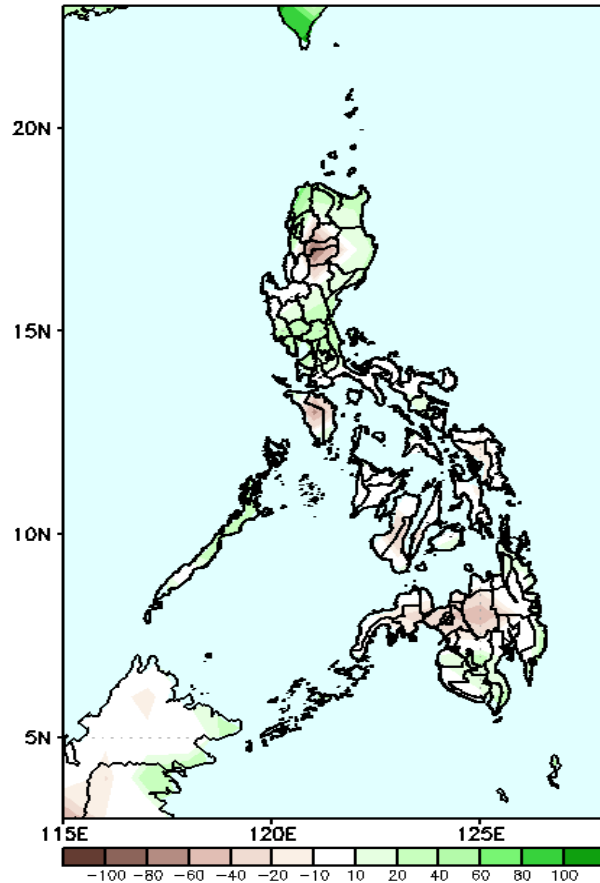


Southwesterly affecting the western sections of Luzon and Visayas. Easterlies affecting the rest of the country during the forecast period

Precipitation Anomaly and Exceedance Probability > 25/50 mm

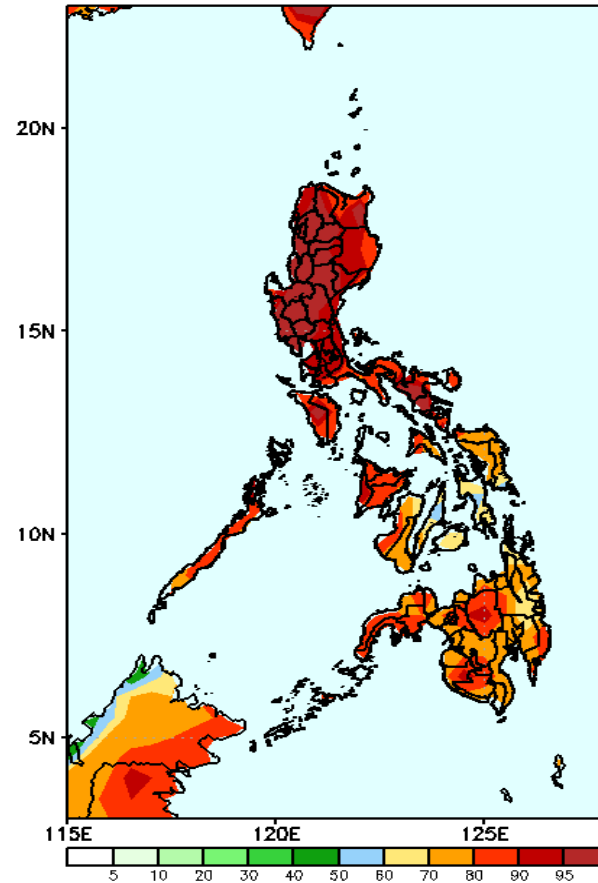
Week 2: Jul 01- 07, 2022

GEFS Week-2 Precip. Anomaly
Valid: 20220701 - 20220707



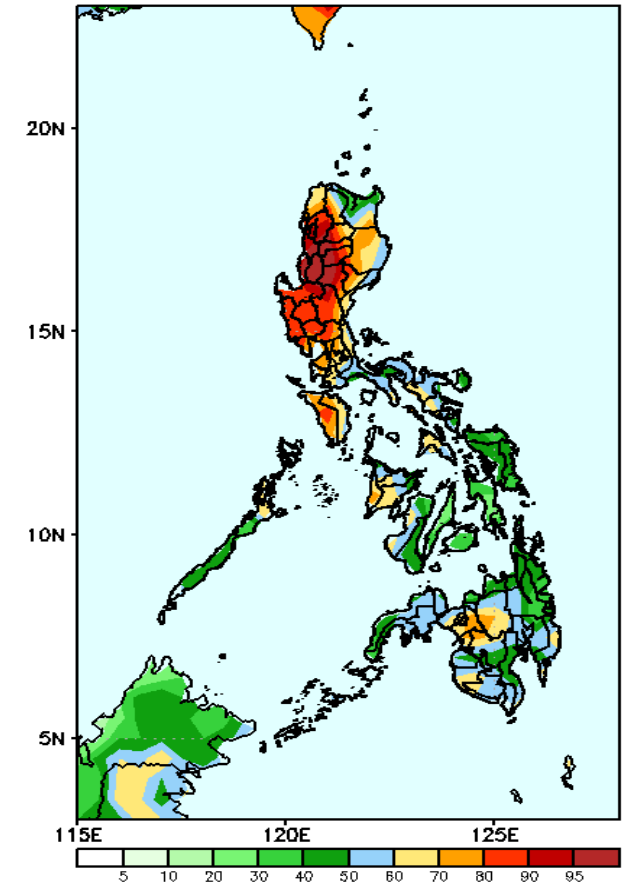
Rainfall deficit of 40-80mm is expected in Cordillera Region and 20-40mm in Visayas and Mindanao while 20-60mm increase of rainfall for the rest of Luzon during the forecast period.

GEFS Week-2 Exceedance Prob. > 25mm
Valid: 20220701 - 20220707



High probability of rainfall to exceed 25mm in most parts of the country during the forecast period.

GEFS Week-2 Exceedance Prob. > 50mm
Valid: 20220701 - 20220707

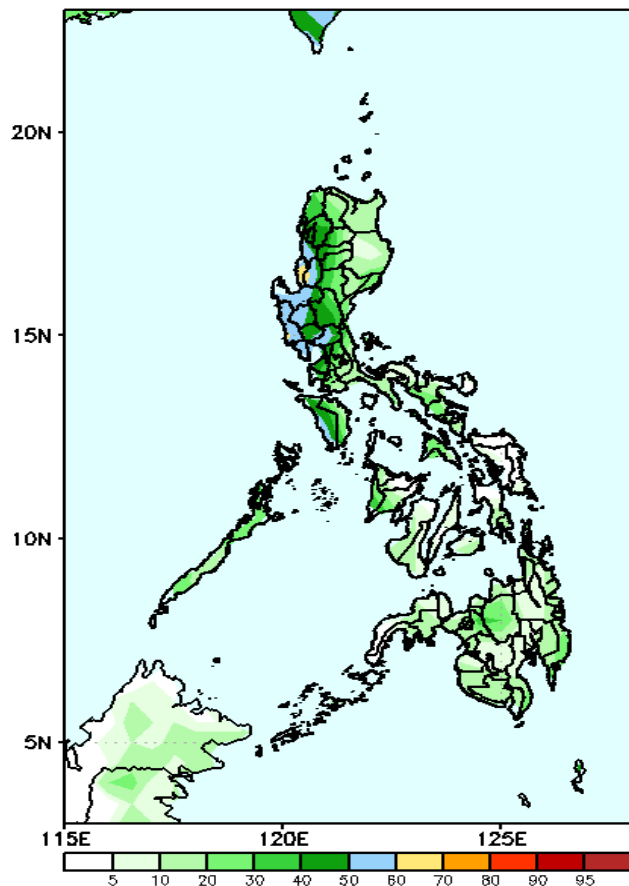


High probability of rainfall to exceed 50mm in most parts of Luzon while 50-80% chance in Visayas and Mindanao during the forecast period

Exceedance Probability > 100/150/200 mm

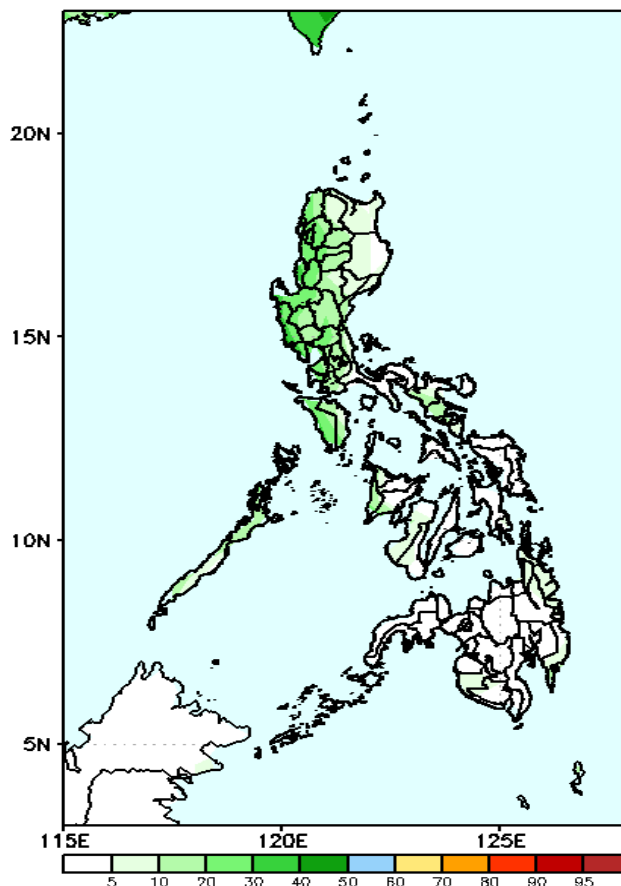
Week 2: Jul 01- 07, 2022

GEFS Week-2 Exceedance Prob. > 100mm
Valid: 20220701 – 20220707



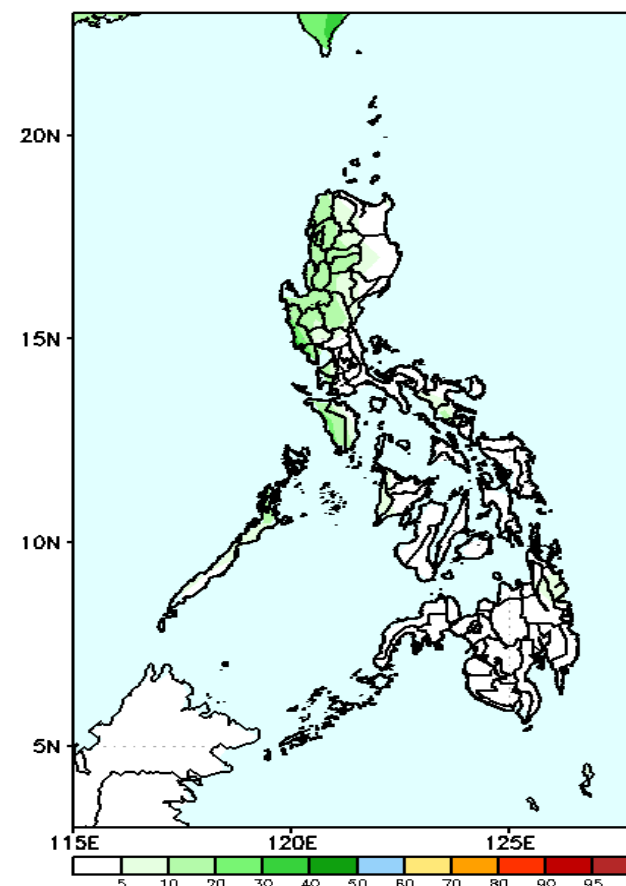
Low probability of rainfall to exceed 100mm in most parts of the country during the forecast period.

GEFS Week-2 Exceedance Prob. > 150mm
Valid: 20220701 – 20220707



Low probability of rainfall to exceed 150mm in most parts of the country during the forecast period.

GEFS Week-2 Exceedance Prob. > 200mm
Valid: 20220701 – 20220707

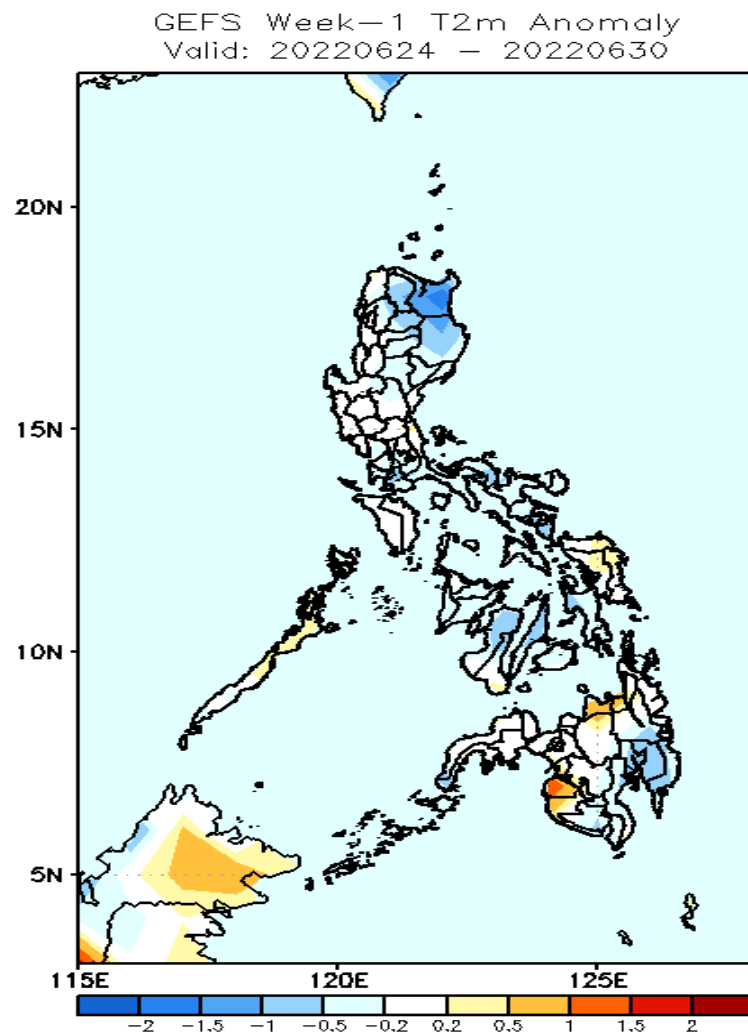


Low probability of rainfall to exceed 200mm in most parts of the country during the forecast period.

19
SA

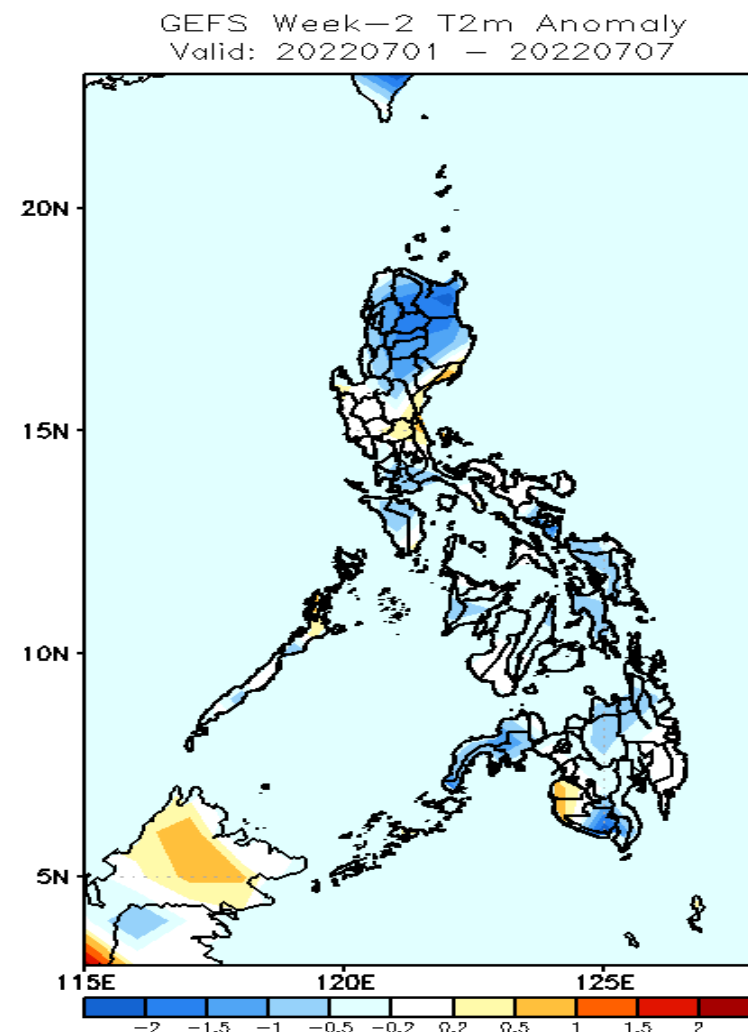


GEFS Week-1 & 2 Forecasts: T2m Anomaly



2m Temperature Week 1: Jun 24-30, 2022

Average to slightly cooler surface air temperature will likely experience in most parts of the country except in Apayao (cooler) and Misamis Oriental, Maguindanao and Sultan Kudarat (slightly warmer to warmer) during the forecast period.



2m Temperature Week 2: Jul 01- 07, 2022

Cooler than surface air temperature will likely experience in most parts of Northern Luzon and South Cotabato while average to slightly cooler for the rest of the country during the forecast period.