



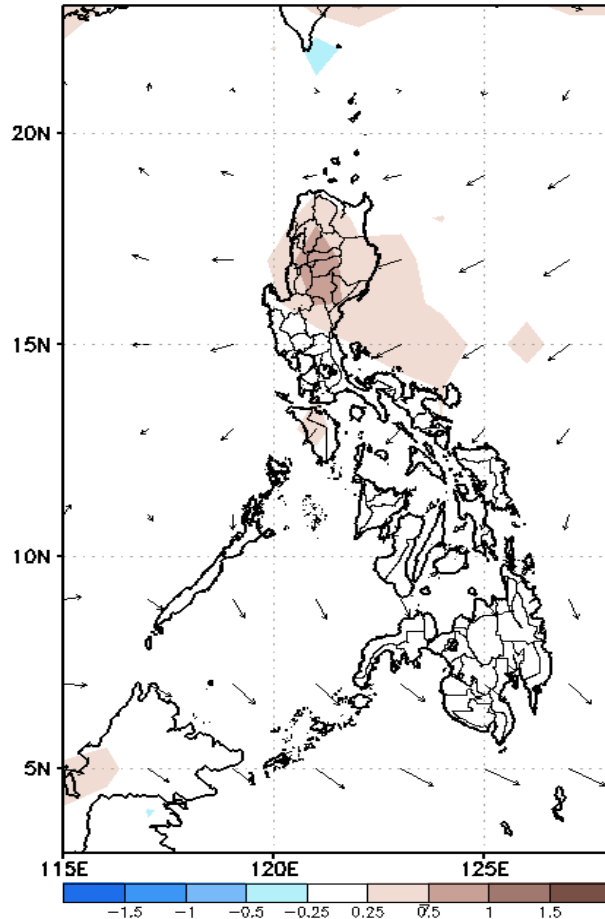
Week 1 & Week 2 Forecast for the Philippines using GEFS Model



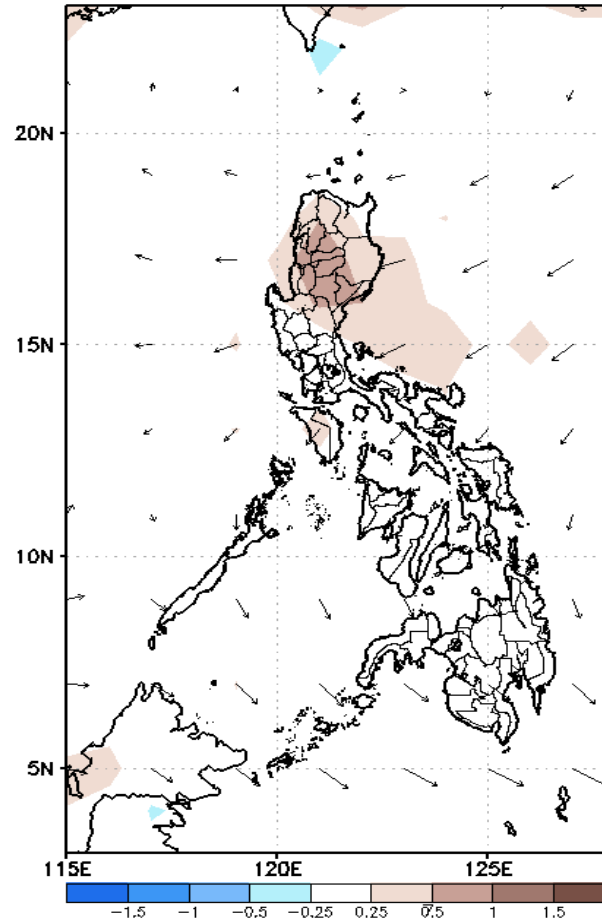
GEFS Week-1 Forecasts: Divergence & Wind Anomaly

Week 1: May 20-26, 2021

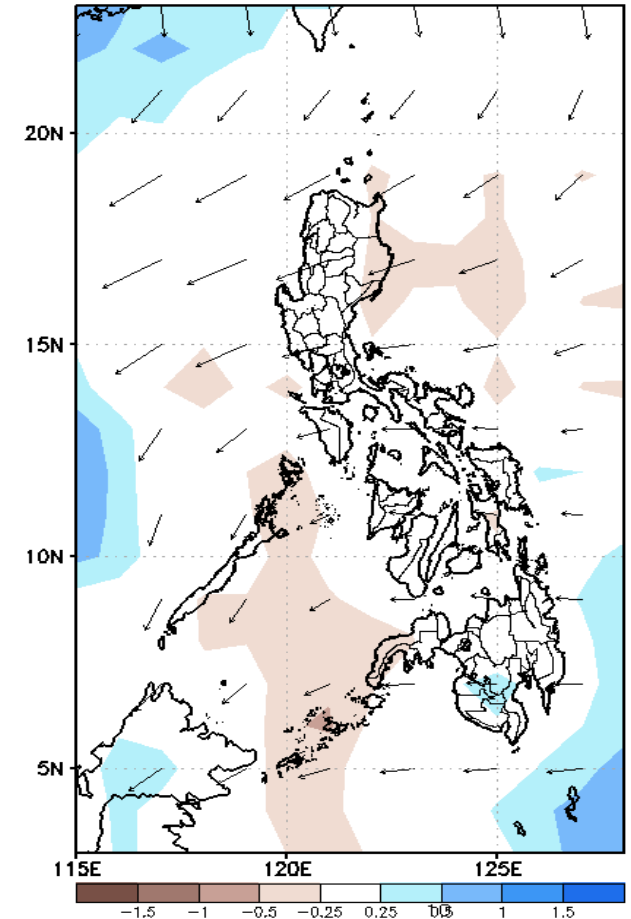
GEFS Week-1 850-hPa Divergence and Wind Anom
Valid: 20210524 - 20210530



GEFS Week-1 700-hPa Divergence and Wind Anom
Valid: 20210524 - 20210530



GEFS Week-1 200-hPa Divergence and Wind Anom
Valid: 20210524 - 20210530

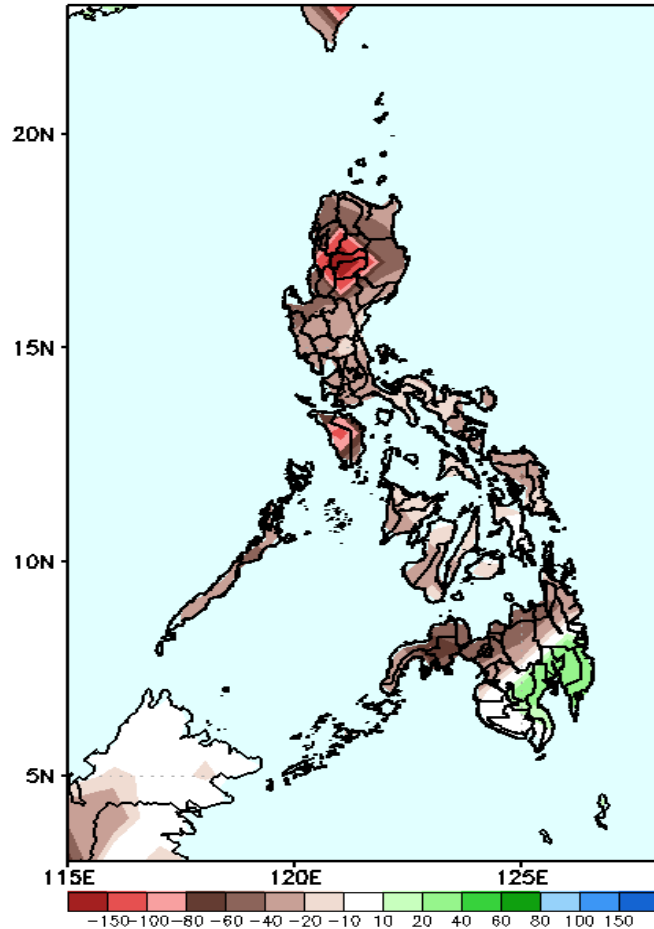


Upper and low level Divergence suggest less likelihood of precipitation in most parts of the country. Easterlies affecting most parts of the country attributing to warmer temperatures and higher heat index during the forecast period.

Precipitation Anomaly and Exceedance Probability > 25/50 mm

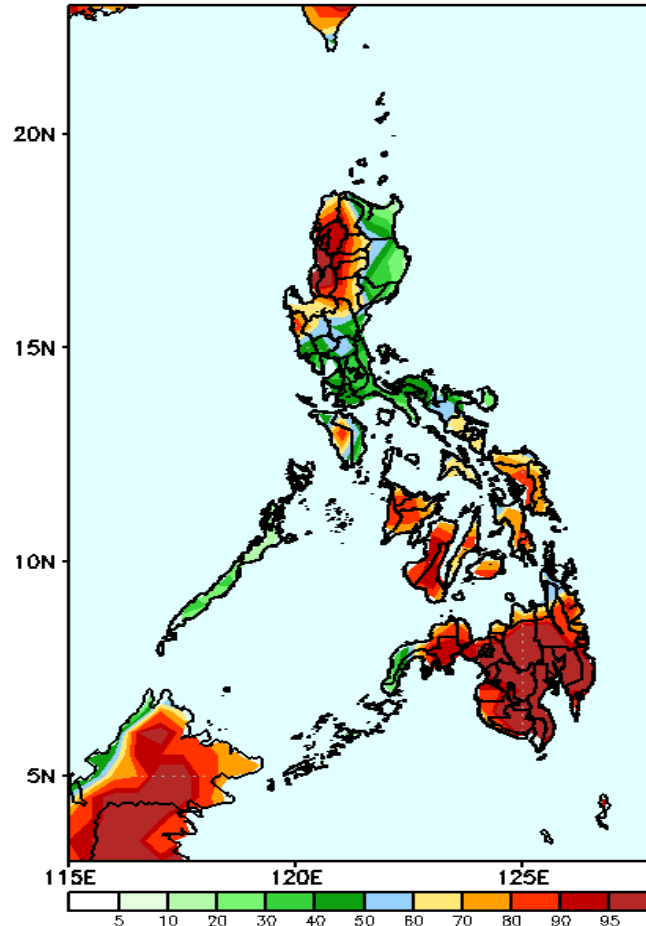
Week 1: May 20-26, 2021

GEFS Week-1 Precip Anomaly
Valid: 20210524 - 20210530



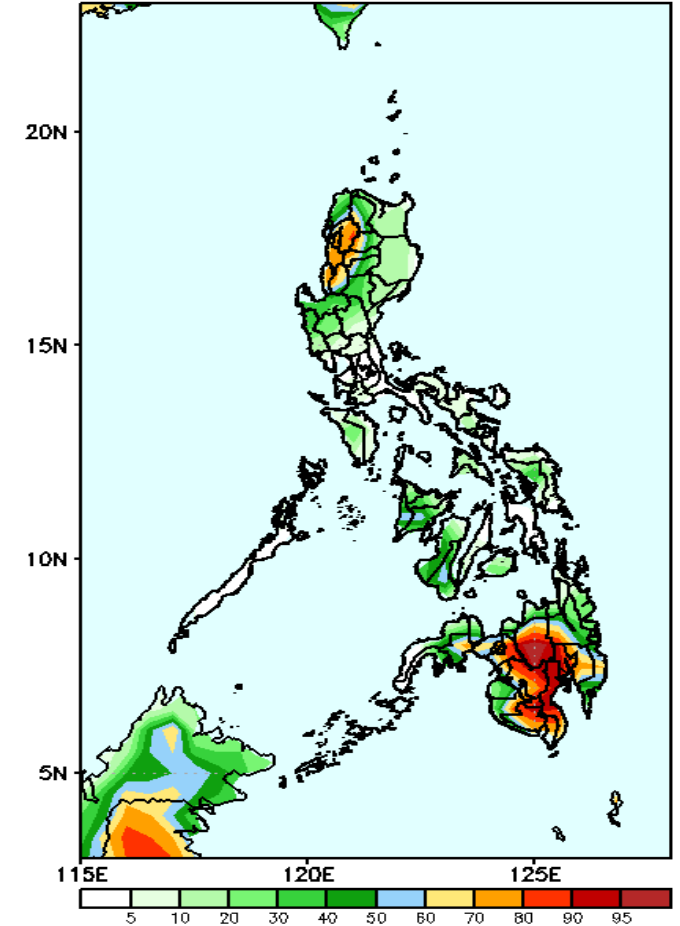
Rainfall deficit of 60-150mm is expected in most parts of the country (specially in Cordillera Region & Mindoro) except in the Davao Region and North Cotabato where 40-60mm increase of rainfall is more likely.

GEFS Week-1 Exceedance Prob. > 25mm
Valid: 20210524 - 20210530



High probability of rainfall to exceed 25mm in Ilocos region, CAR, Pangasinan, Sorsogon, Occ. Mindoro and most parts of Visayas and Mindanao while less likely for the remaining parts of the country during the forecast period.

GEFS Week-1 Exceedance Prob. > 50mm
Valid: 20210524 - 20210530

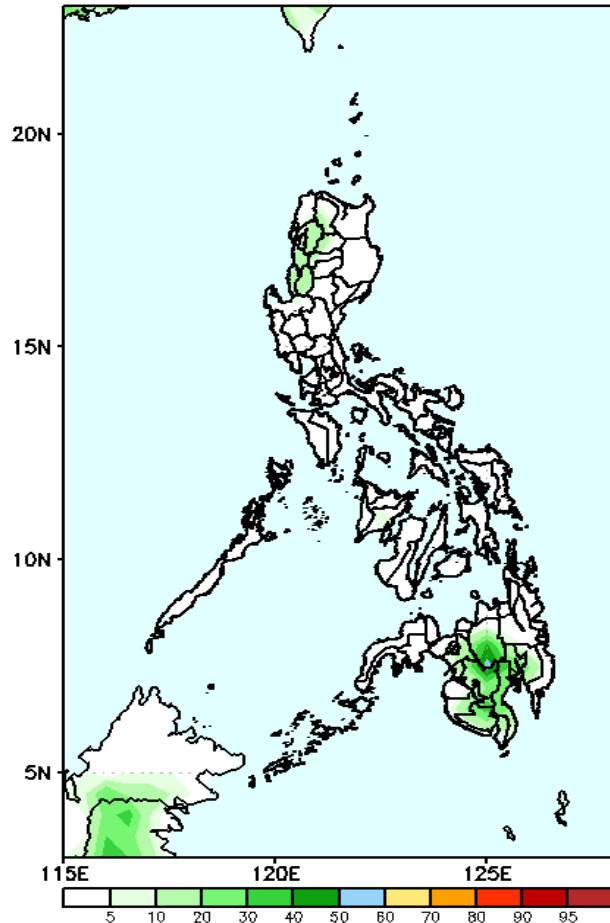


High probability of rainfall to exceed 50mm in Abra, Benguet, La Union and most parts of Mindanao while less likely for the rest of the country during the forecast period.

Exceedance Probability > 100/150/200 mm

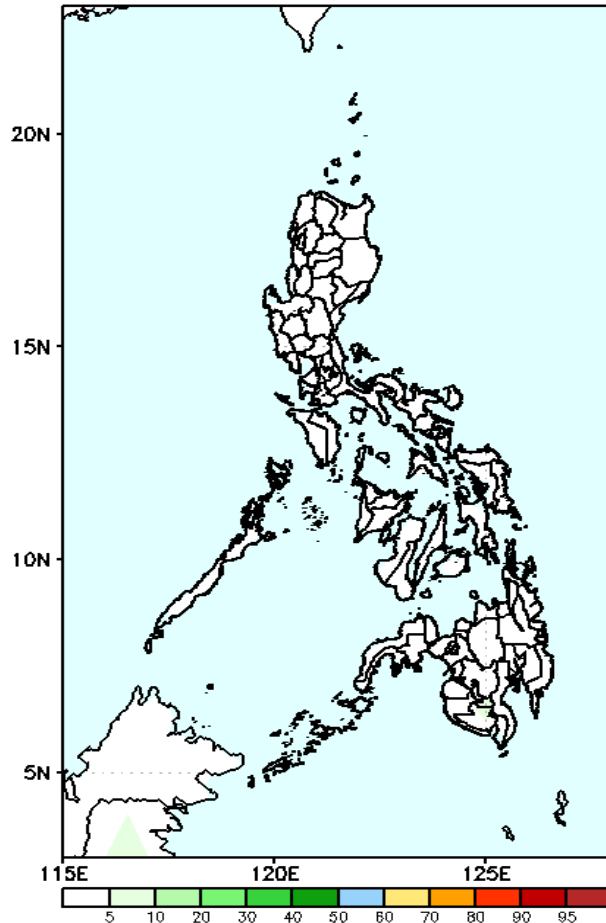
Week 1: May 20-26, 2021

GEFS Week-1 Exceedance Prob. > 100mm
Valid: 20210524 - 20210530



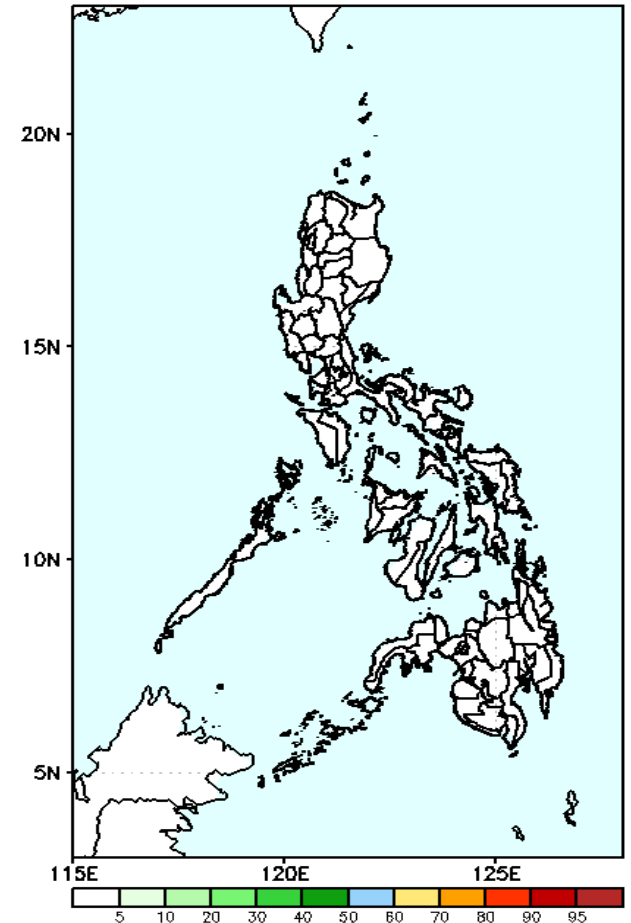
Less probability of rainfall to exceed 100mm in most parts of the country during the forecast period.

GEFS Week-1 Exceedance Prob. > 150mm
Valid: 20210524 - 20210530



Less probability of rainfall to exceed 150mm in most parts of the country during the forecast period.

GEFS Week-1 Exceedance Prob. > 200mm
Valid: 20210524 - 20210530



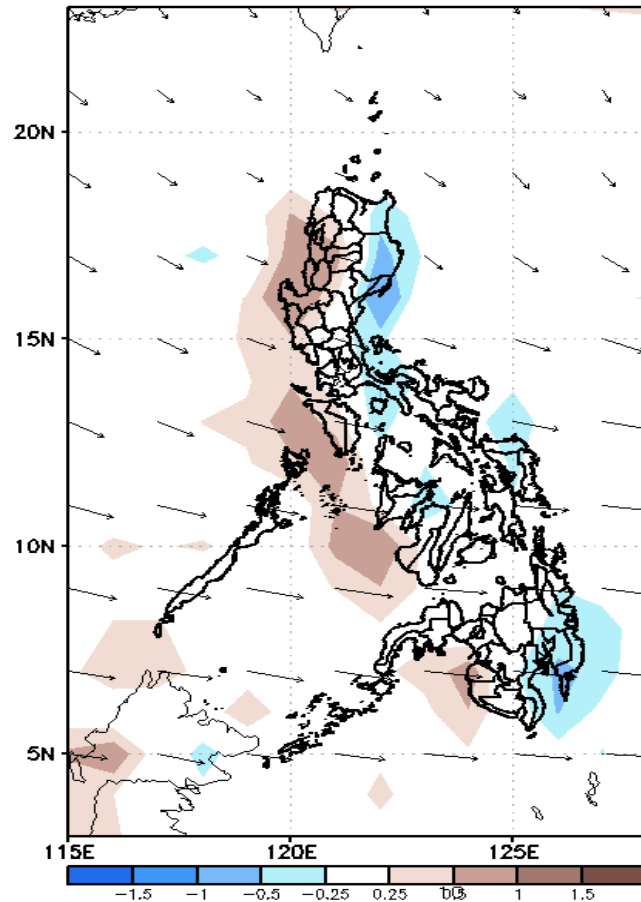
Less probability of rainfall to exceed 200mm in most parts of the country during the forecast period.



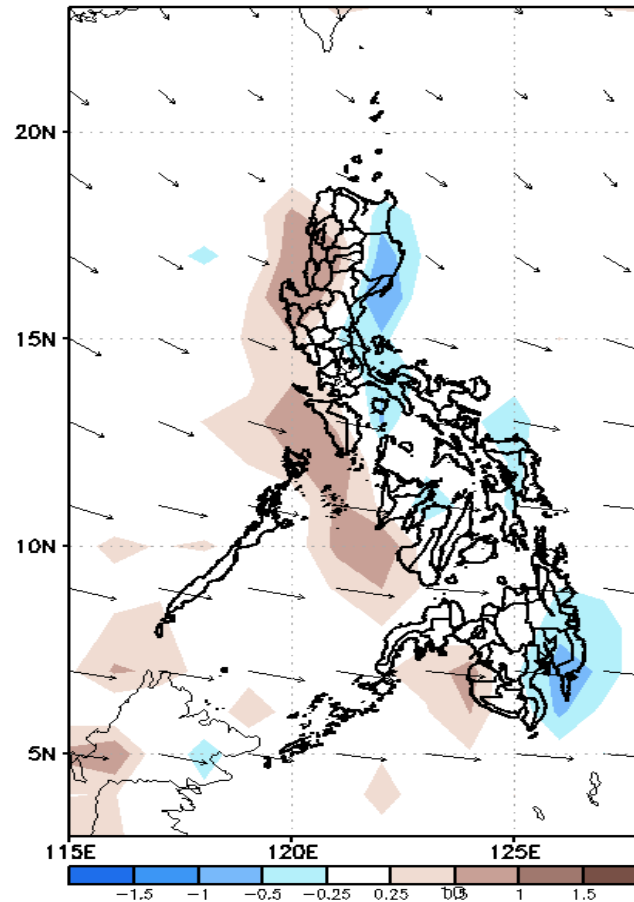
GEFS Week-2 Forecasts: Divergence & Wind Anomaly

Week 2: May 31 – June 06, 2021

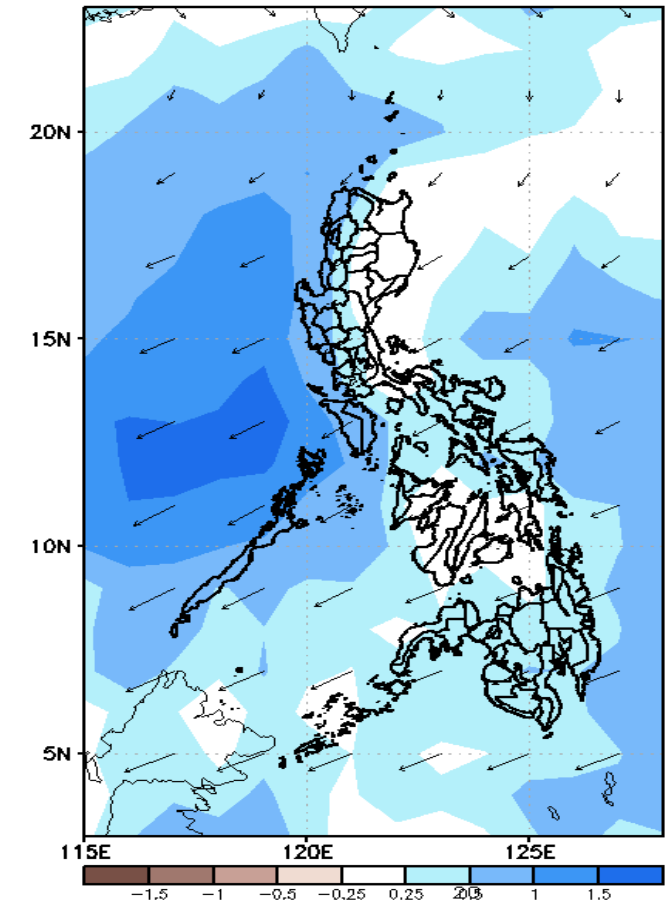
GEFS Week-2 850-hPa Divergence and Wind Anomaly
Valid: 20210531 – 20210606



GEFS Week-2 700-hPa Divergence and Wind Anomaly
Valid: 20210531 – 20210606



GEFS Week-2 200-hPa Divergence and Wind Anomaly
Valid: 20210531 – 20210606

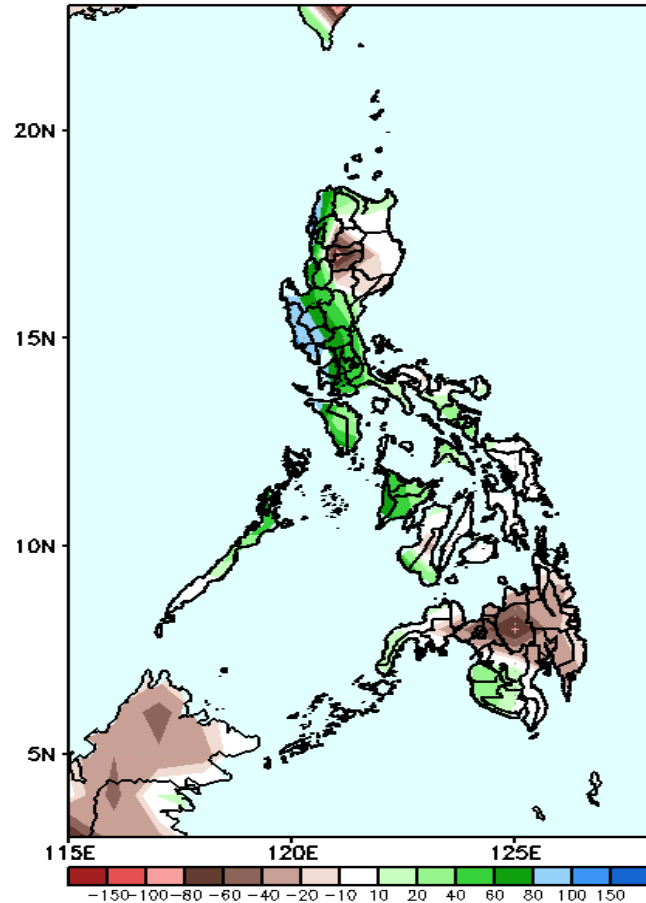


Upper and low level Divergence suggest likelihood of precipitation in most parts of the country. Southwest monsoon affecting the eastern portions of the country while easterlies affecting the remaining parts of the country attributing to warmer temperatures and higher heat index during the forecast period.

Precipitation Anomaly and Exceedance Probability > 25/50 mm

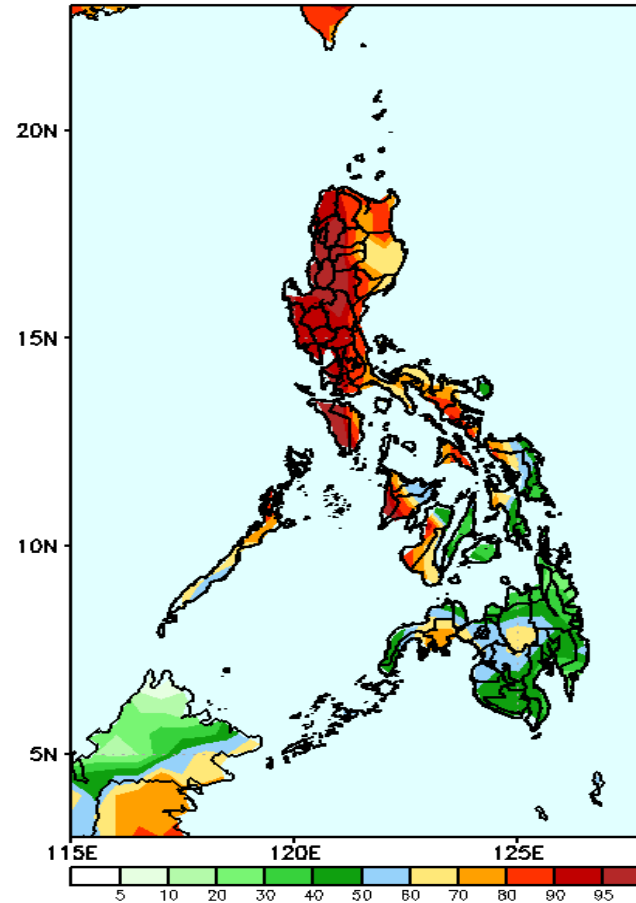
Week 2: May 31 – June 06, 2021

GEFS Week-2 Precip Anomaly
Valid: 20210531 – 20210606



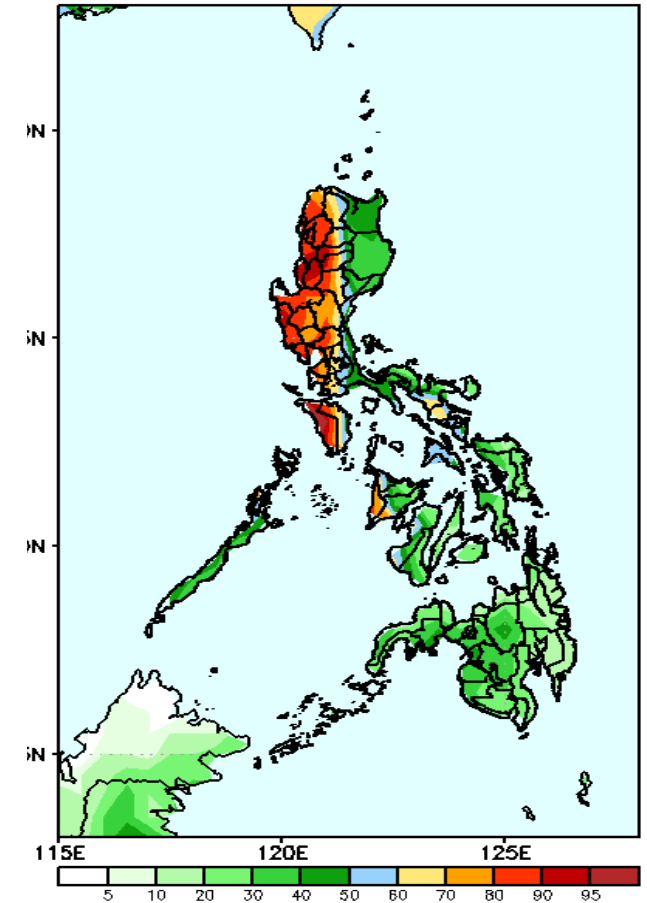
Rainfall deficit of 40-80mm is expected in some areas in Cordillera Region, and most parts of Mindanao while increase of rainfall of 60-100 in the western, central and southern parts of Luzon, in Panay Island, Zambonga del Norte and Sultan Kudarat.

GEFS Week-2 Exceedance Prob. > 25mm
Valid: 20210531 – 20210606



High probability of rainfall to exceed 25mm in most parts of Luzon, western Visayas, Northern Samar, Samar, Bukidnon and Surigao del Sur while less likely for the rest of the country during the forecast period.

EFS Week-2 Exceedance Prob. > 50mm
Valid: 20210531 – 20210606

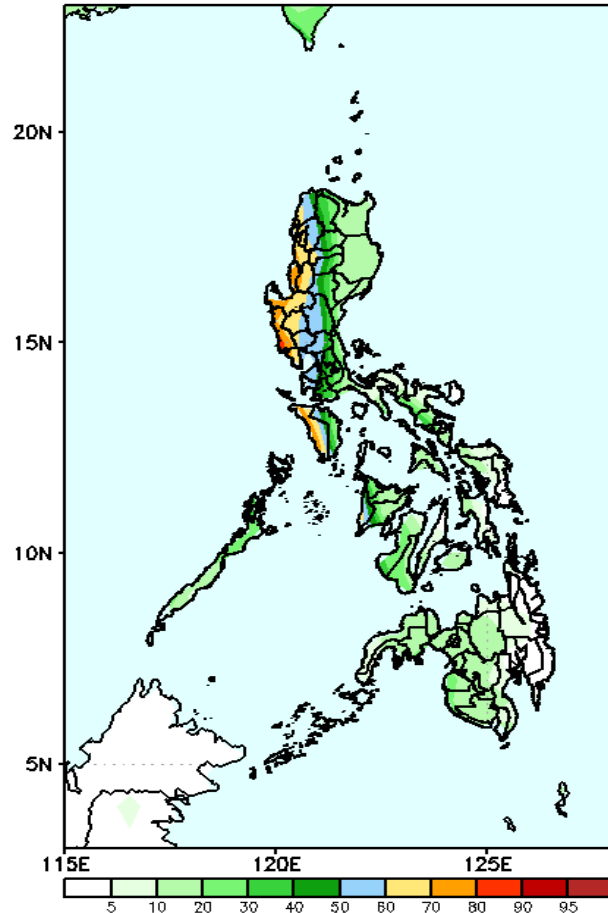


High probability of rainfall to exceed 50mm in most parts of Ilocos Region, CAR, Central Luzon, NCR, Cavite, Batangas, Mindoro provinces and Antique while less likely for the rest of the country during the forecast period.

Exceedance Probability > 100/150/200 mm

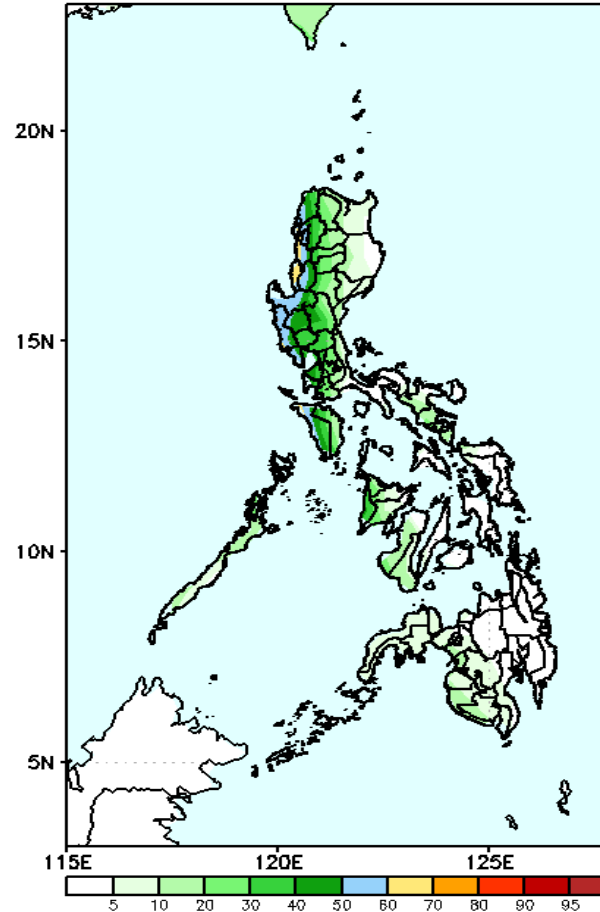
Week 2: May 31 – June 06, 2021

GEFS Week-2 Exceedance Prob. > 100mm
Valid: 20210531 – 20210606



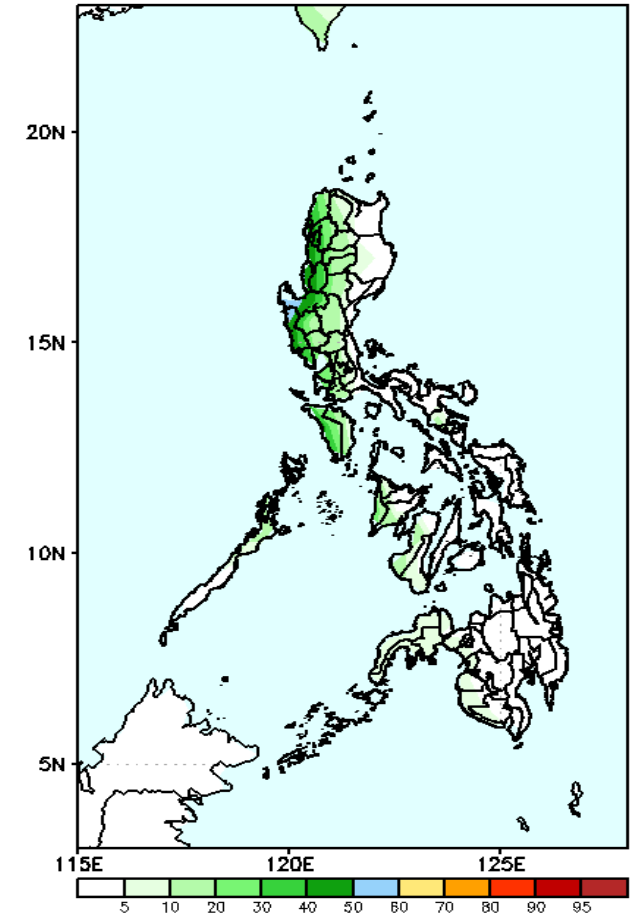
High probability of rainfall to exceed 100mm in most parts of Western Luzon while less likely for the rest of the country during the forecast period.

GEFS Week-2 Exceedance Prob. > 150mm
Valid: 20210531 – 20210606



Less probability of rainfall to exceed 150mm in most parts of the country during the forecast period.

GEFS Week-2 Exceedance Prob. > 200mm
Valid: 20210531 – 20210606

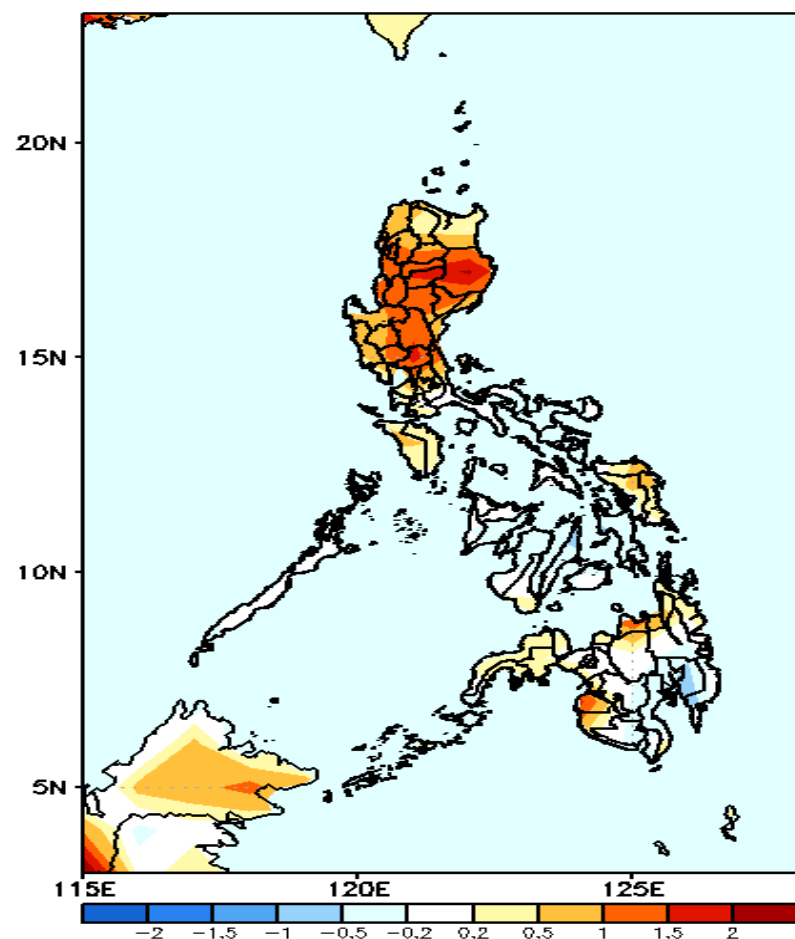


Less probability of rainfall to exceed 200mm in most parts of the country during the forecast period.



GEFS Week-1 & 2 Forecasts: T2m Anomaly

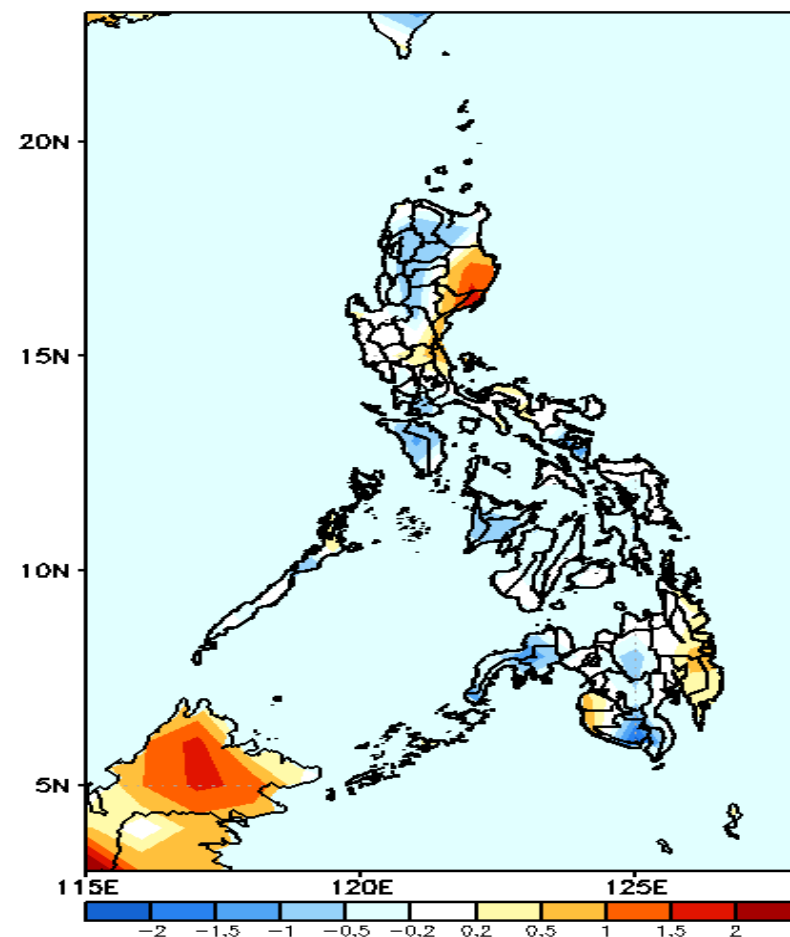
GEFS Week-1 T2m Anomaly
Valid: 20210524 – 20210530



2m Temperature Week 1: May 24-30, 2021

Warmer than average surface air temperature will likely experience in most parts of Luzon and Maguindanao while average to slightly warmer than average temperature for the rest of the country during the forecast period.

GEFS Week-2 T2m Anomaly
Valid: 20210531 – 20210606



2m Temperature Week 2: May 31 – June 06, 2021

Slightly warmer to warmer than average surface air temperature will likely experience in Isabela, Quirino, Aurora, Maguindanao, Sultan Kudarat and eastern Davao while average to slightly cooler than average temperature for the rest of the country during the forecast period.