



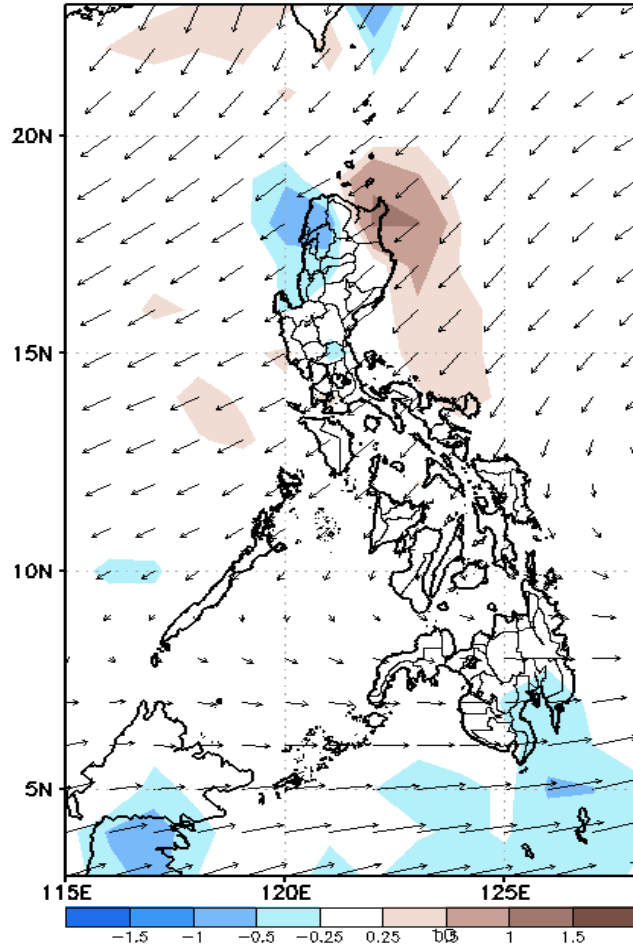
Week 1 & Week 2 Forecast for the Philippines using GEFS Model



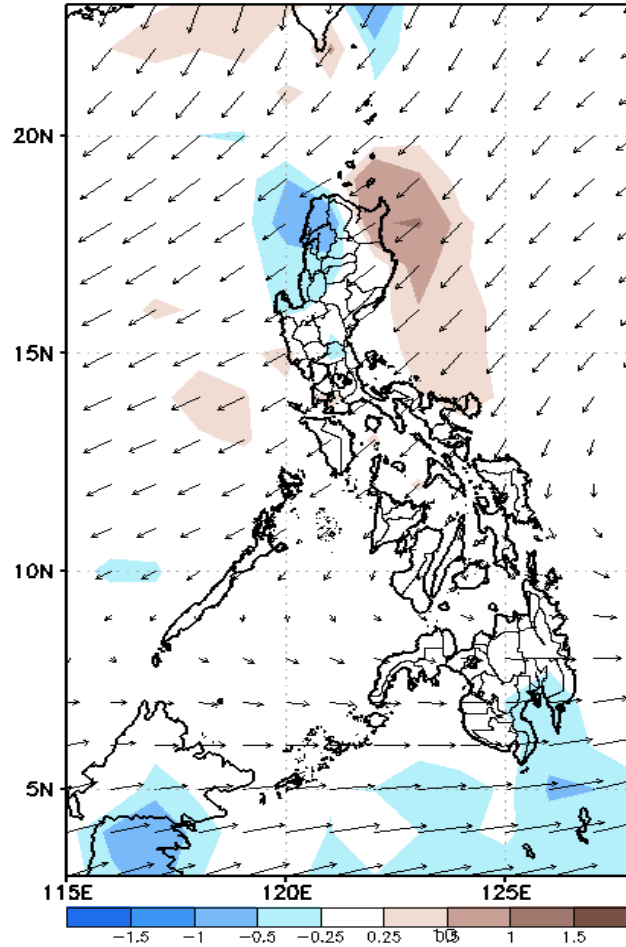
GEFS Week-1 Forecasts: Wind Anomaly Forecast

Week 1: Oct 24-30, 2022

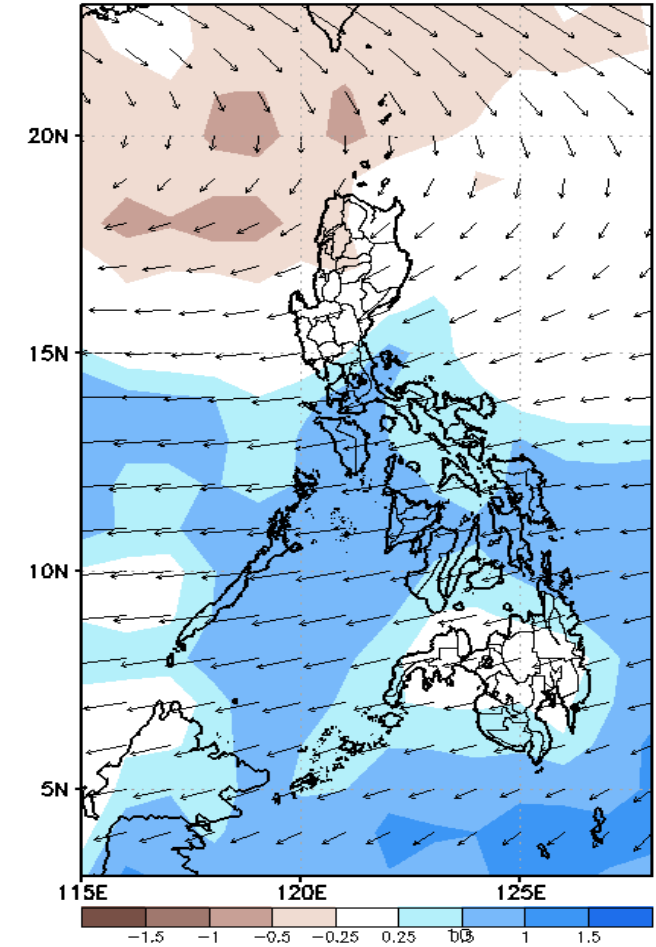
GEFS Week-1 850-hPa Divergence and Wind Anom
Valid: 20221024 - 20221030



GEFS Week-1 700-hPa Divergence and Wind Anom
Valid: 20221024 - 20221030



GEFS Week-1 200-hPa Divergence and Wind An
Valid: 20221024 - 20221030

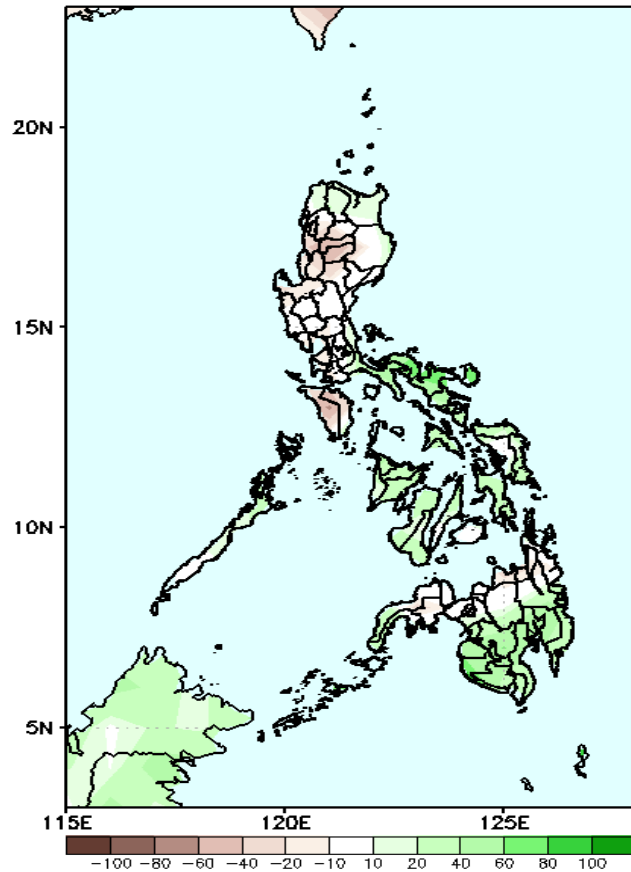


Northeast Monsoon will likely affect most parts of Northern and Central Luzon; westerly wind affecting Southern Mindanao. While a cyclonic circulation affecting Visayas and Northern Mindanao during the forecast period.

Precipitation Anomaly and Exceedance Probability > 25/50 mm

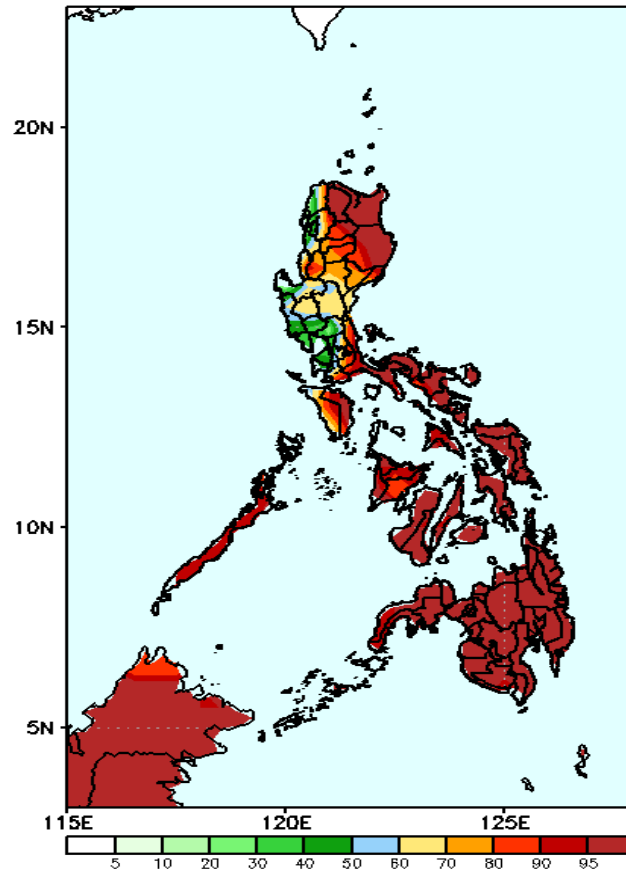
Week 1: Oct 24-30, 2022

GEFS Week-1 Precip Anomaly
Valid: 20221024 - 20221030



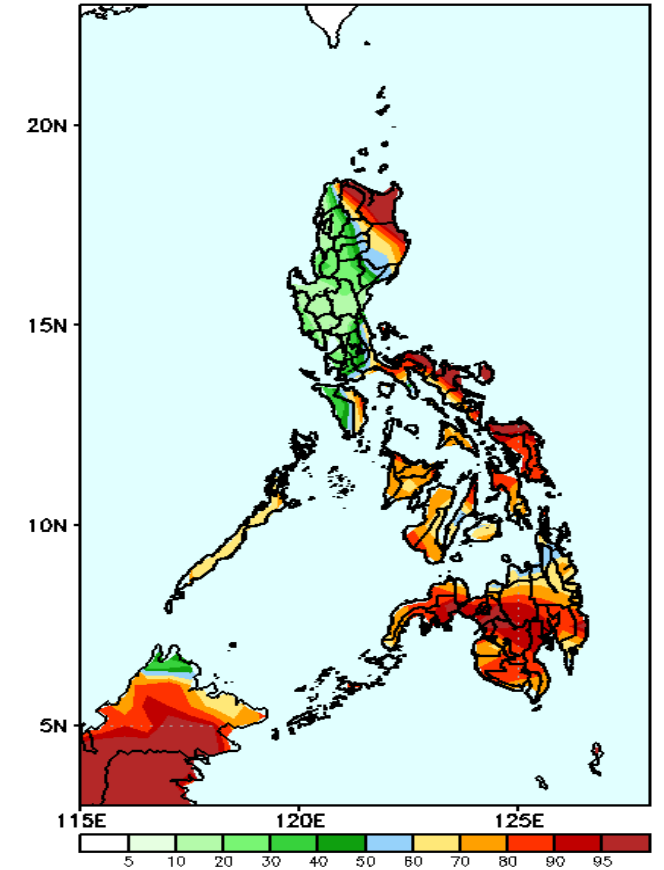
Increase of rainfall of 40-85mm is expected in most parts of Quezon, Bicol Region, Visayas and southern Mindanao while 20-60mm rainfall deficit in Mt. Province, Ifugao and Mindoro during the forecast period.

GEFS Week-1 Exceedance Prob. > 25mm
Valid: 20221024 - 20221030



High probability of rainfall to exceed 25mm in most parts of the country except in some areas in Central Luzon during the forecast period.

GEFS Week-1 Exceedance Prob. > 50mm
Valid: 20221024 - 20221030

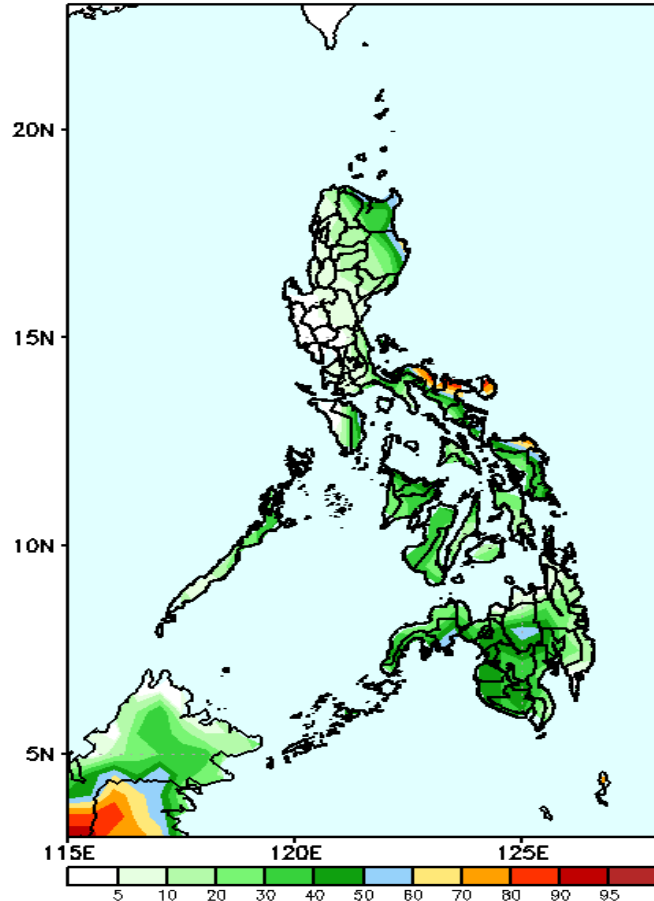


High probability of rainfall to exceed 50mm in Apayao, Cagayan, Isabela, Or. Mindoro, Bicol Region and most parts of Visayas and Mindanao while less chance for the rest of Luzon during the forecast period.

Exceedance Probability > 100/150/200 mm

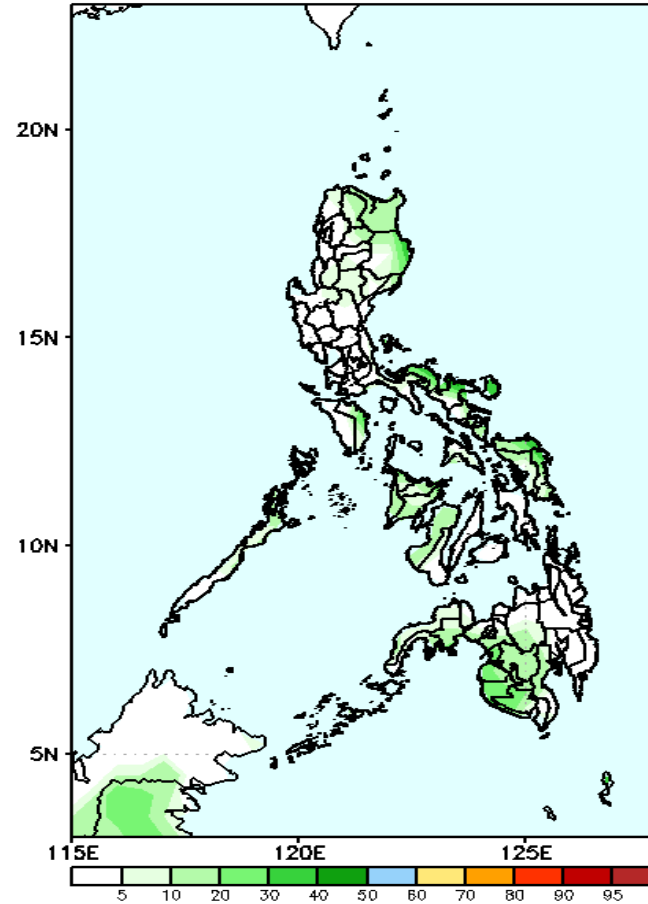
Week 1: Oct 24-30, 2022

GEFS Week-1 Exceedance Prob. > 100mm
Valid: 20221024 - 20221030



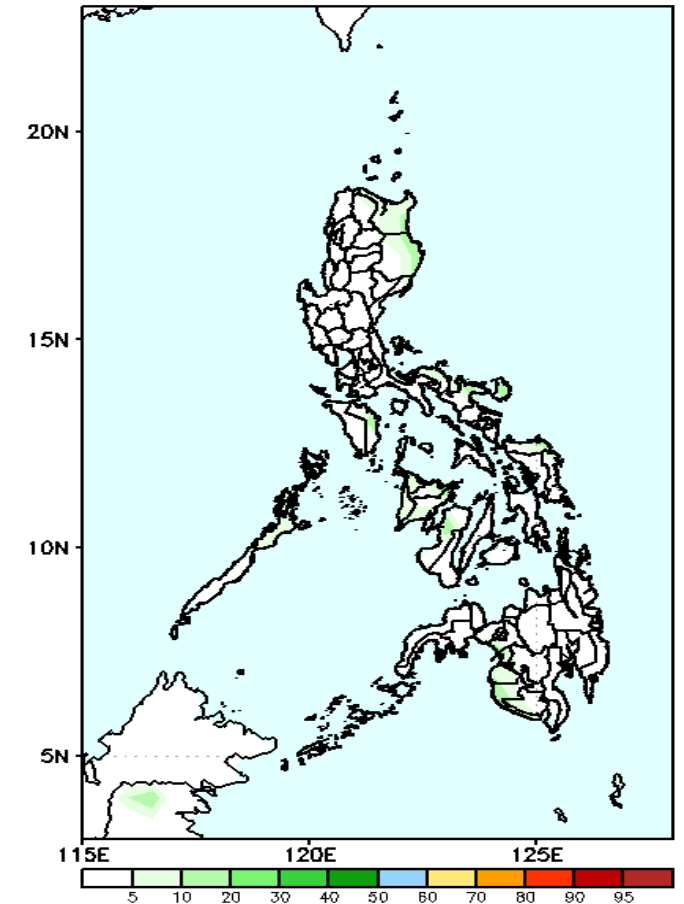
Low probability of rainfall to exceed 100mm in most parts of the country except in Camarines Norte, Camarines Sur, Catanduanes and Northern Samar where there is 60-85% chance during the forecast period.

GEFS Week-1 Exceedance Prob. > 150mm
Valid: 20221024 - 20221030



Low probability of rainfall to exceed 150mm in most parts of the country during the forecast period.

GEFS Week-1 Exceedance Prob. > 200mm
Valid: 20221024 - 20221030

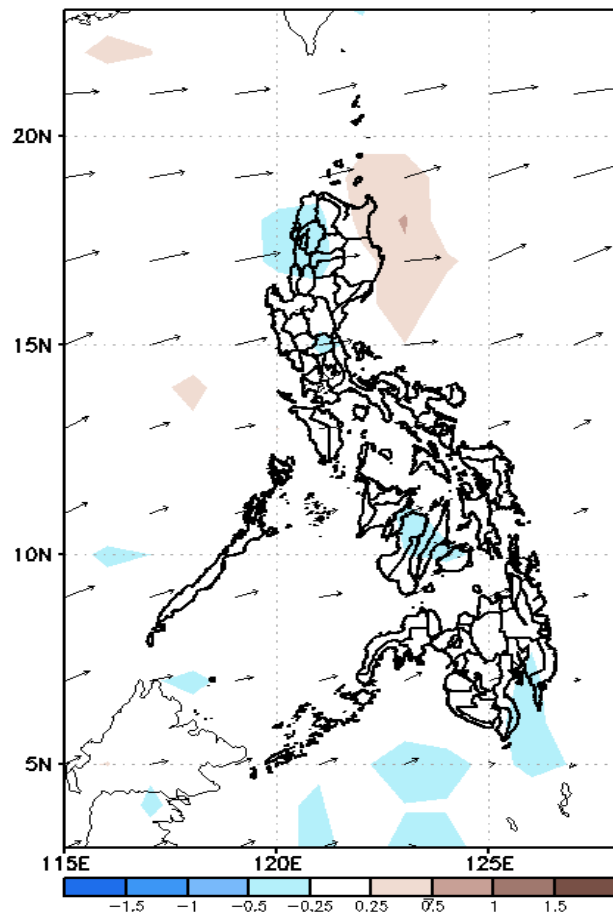


Low probability of rainfall to exceed 200mm in most parts of the country during the forecast period.

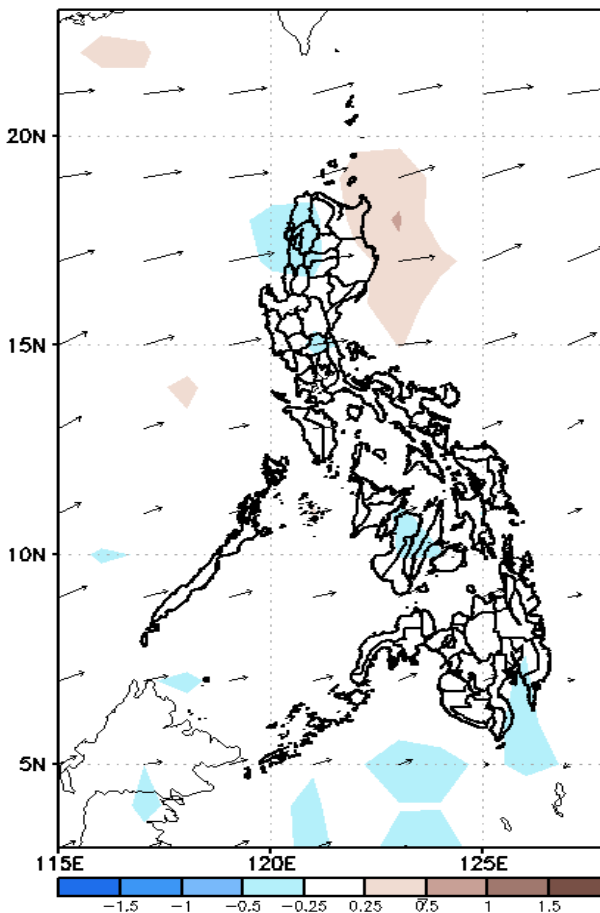
GEFS Week-2 Forecasts: Wind Anomaly Forecast

Week 2: Oct 31- NOV 06, 2022

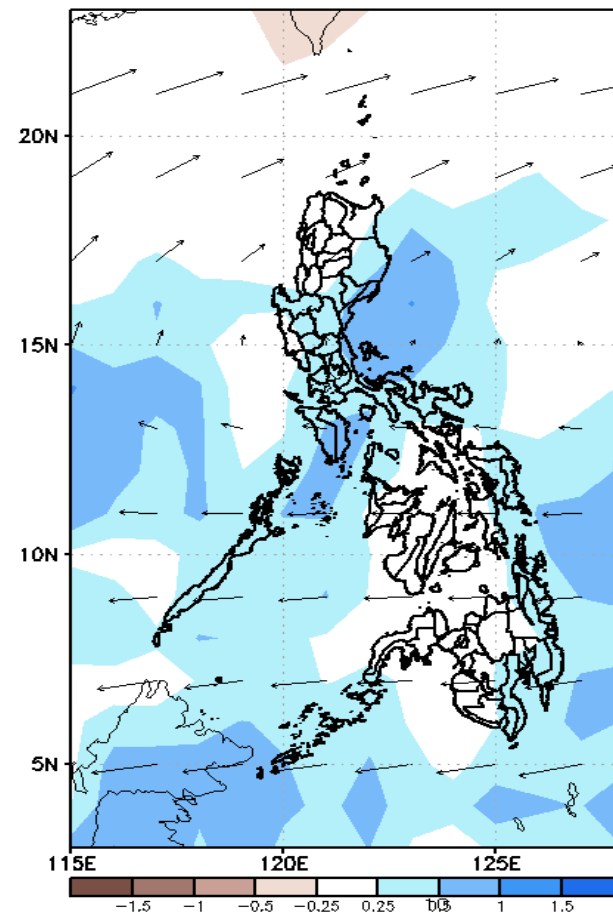
GEFS Week-2 850-hPa Divergence and Wind Anom
Valid: 20221031 - 20221106



GEFS Week-2 700-hPa Divergence and Wind Anom
Valid: 20221031 - 20221106



GEFS week-2 200-hPa Divergence and Wind Anom
Valid: 20221031 - 20221106

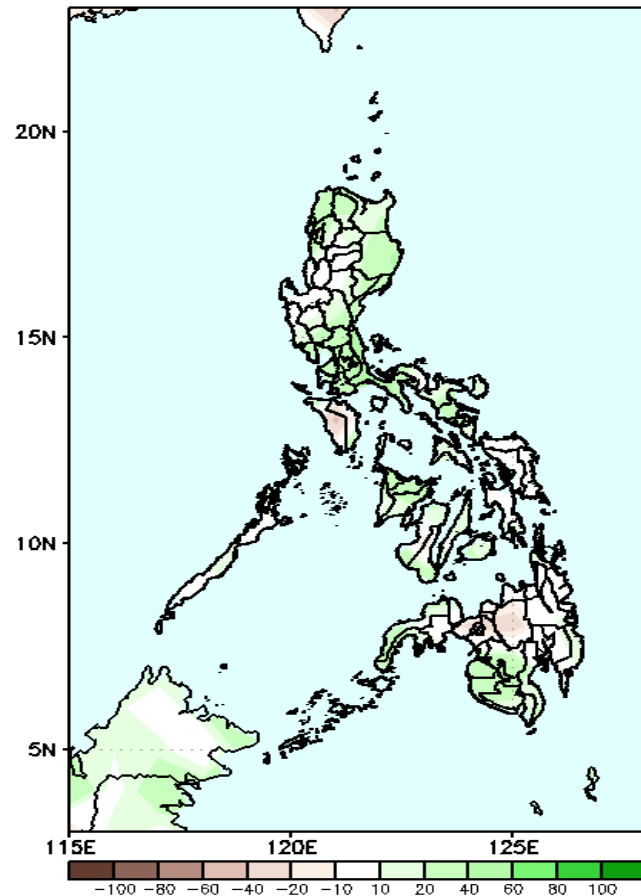


Westerly wind is forecasted to affect most parts of the country during the forecast period.

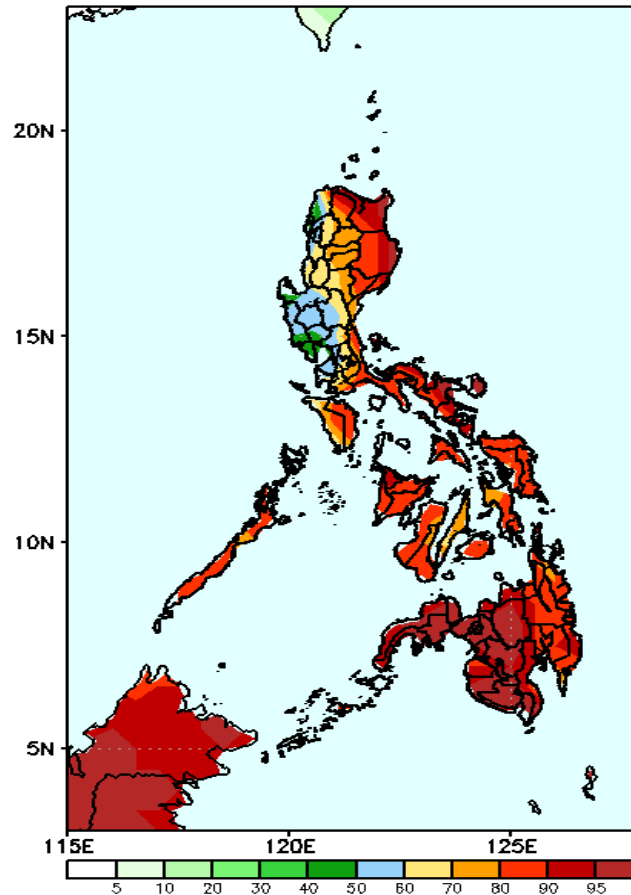
Precipitation Anomaly and Exceedance Probability > 25/50 mm

Week 2: Oct 31- NOV 06, 2022

GEFS Week-2 Precip Anomaly
Valid: 20221031 - 20221106

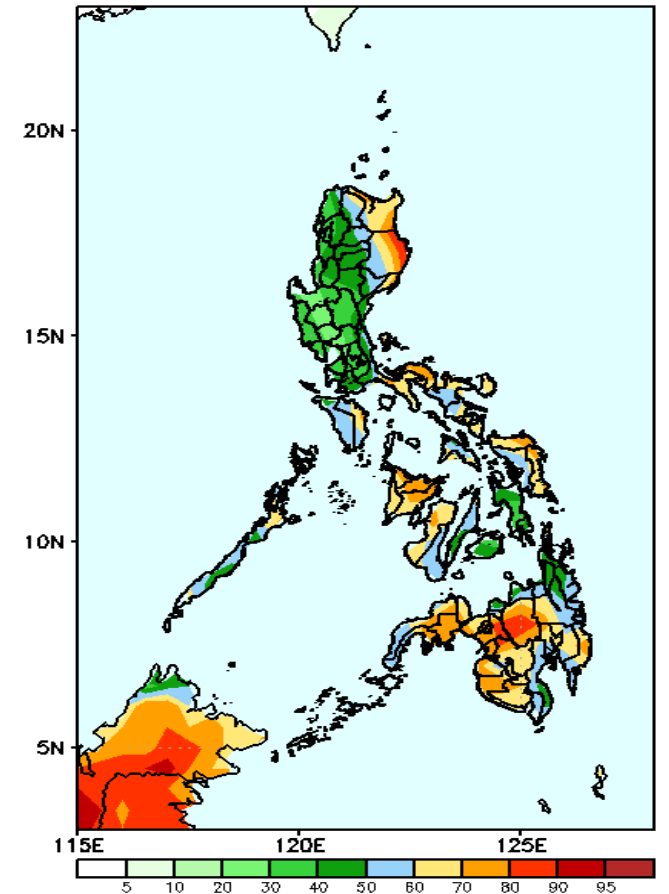


GEFS Week-2 Exceedance Prob. > 25mm
Valid: 20221031 - 20221106



High probability of rainfall to exceed 25mm in most parts of the country during the forecast period.

GEFS Week-2 Exceedance Prob. > 50mm
Valid: 20221031 - 20221106

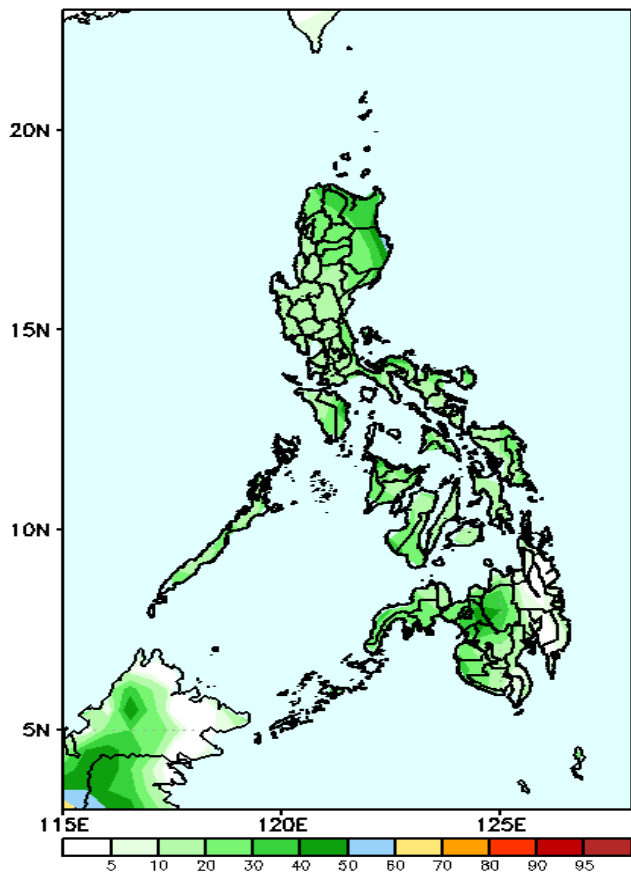


60-90% probability of rainfall to exceed 50mm in Isabela, Cagayan, Quezon, Mindoro, Bicol Region and most parts of Visayas and Mindanao while less likely for the rest of the country during the forecast period.

Exceedance Probability > 100/150/200 mm

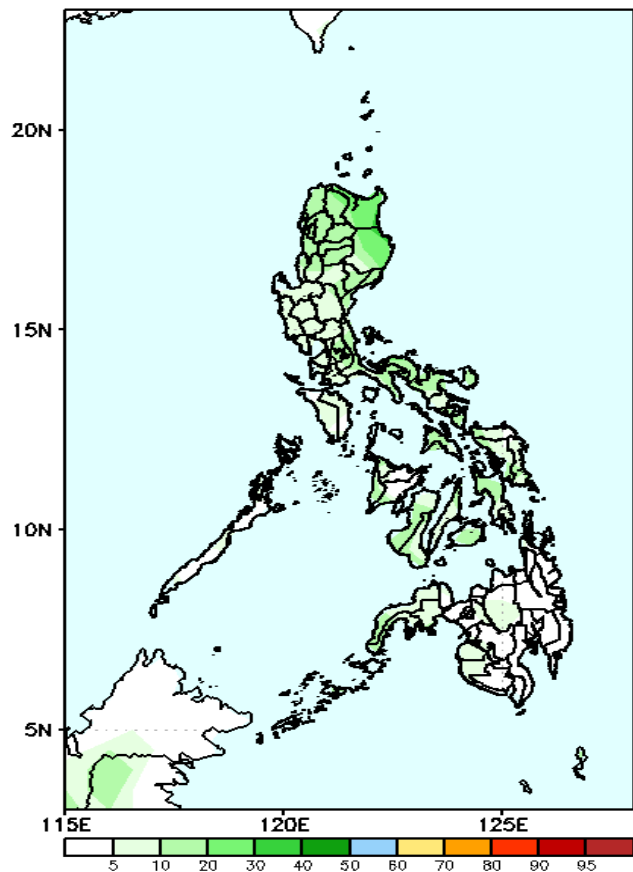
Week 2: Oct 31- NOV 06, 2022

GEFS Week-2 Exceedance Prob. > 100mm
Valid: 20221031 – 20221106



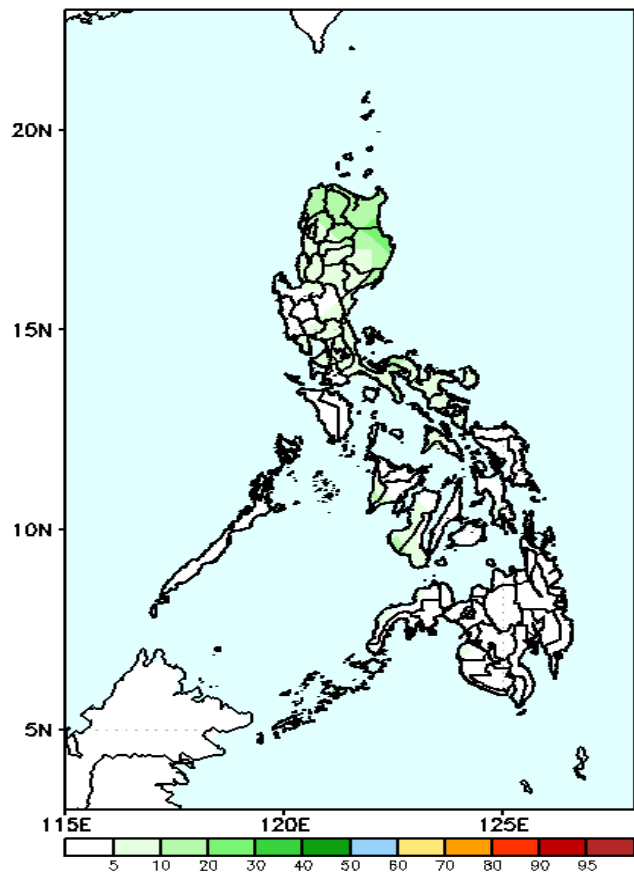
Low probability of rainfall to exceed 100mm in most parts of the country during the forecast period.

GEFS Week-2 Exceedance Prob. > 150mm
Valid: 20221031 – 20221106



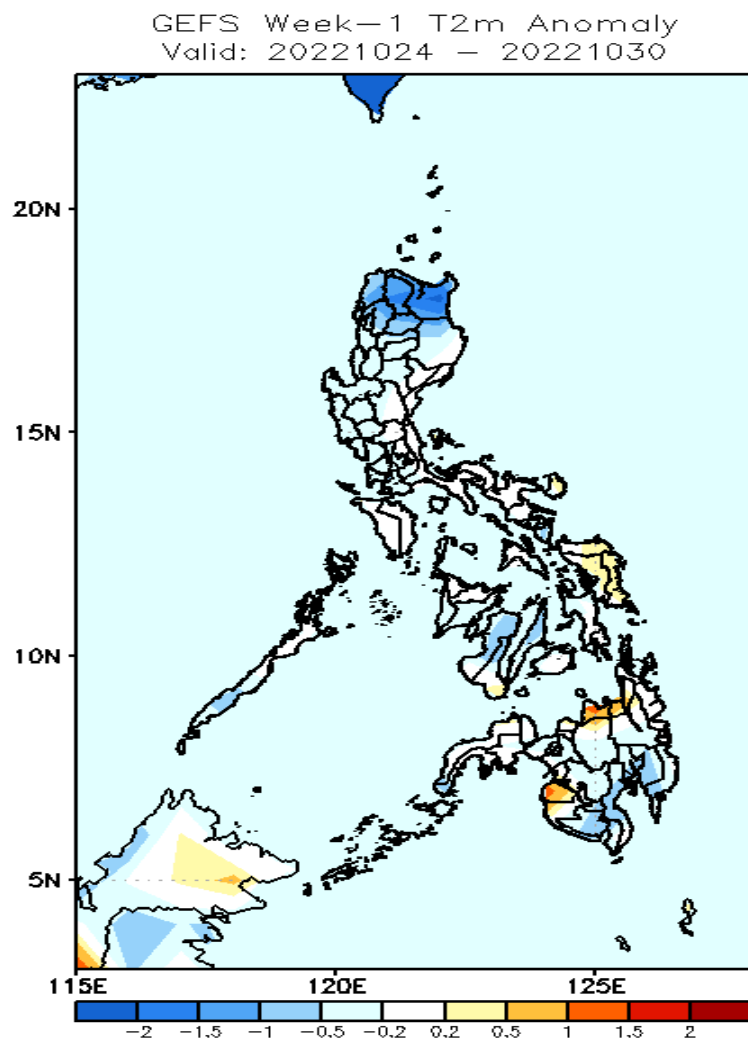
Low probability of rainfall to exceed 150mm in most parts of the country during the forecast period.

GEFS Week-2 Exceedance Prob. > 200mm
Valid: 20221031 – 20221106



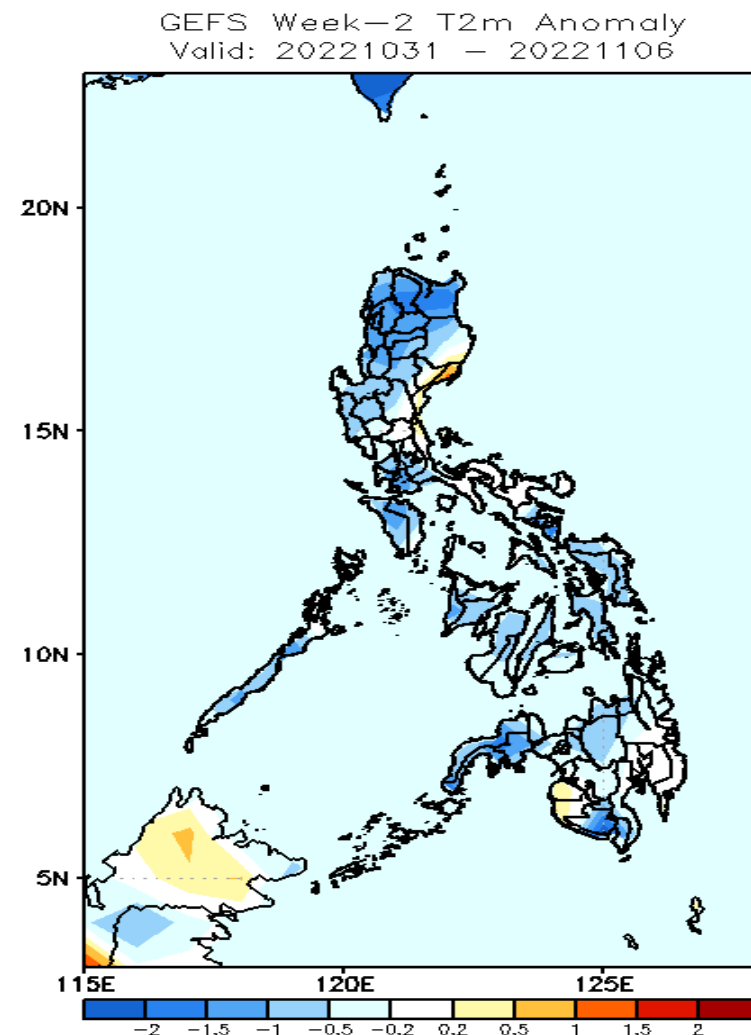
Low probability of rainfall to exceed 200mm in most parts of the country during the forecast period.

GEFS Week-1 & 2 Forecasts: T2m Anomaly



2m Temperature Week 1: Oct 24-30, 2022

Near to slightly warmer than average surface air temperature will likely experience in most parts of the country except in Northern Luzon, Cebu, Negros Island and southern Mindanao (slightly cooler to cooler), Maguindanao and Misamis Oriental (warmer) during the forecast period.



2m Temperature Week 2: Oct 31- NOV 06, 2022

Near to cooler than average surface air temperature will likely experience in most parts of the country except in some areas in eastern Luzon, Maguindanao and Sultan Kudarat where slightly warmer than average surface air temperature is expected during the forecast period.