



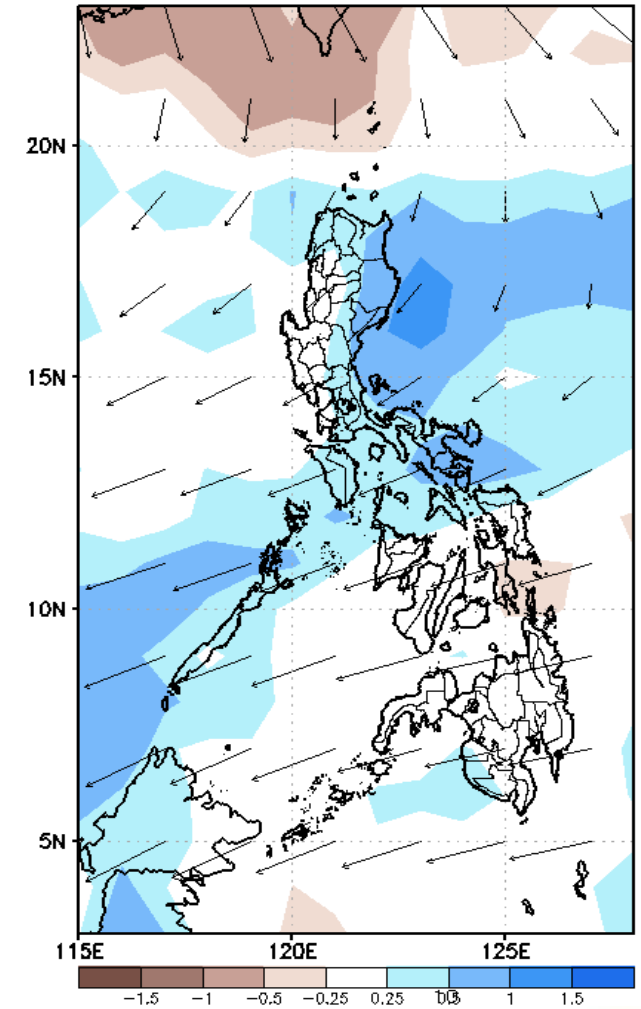
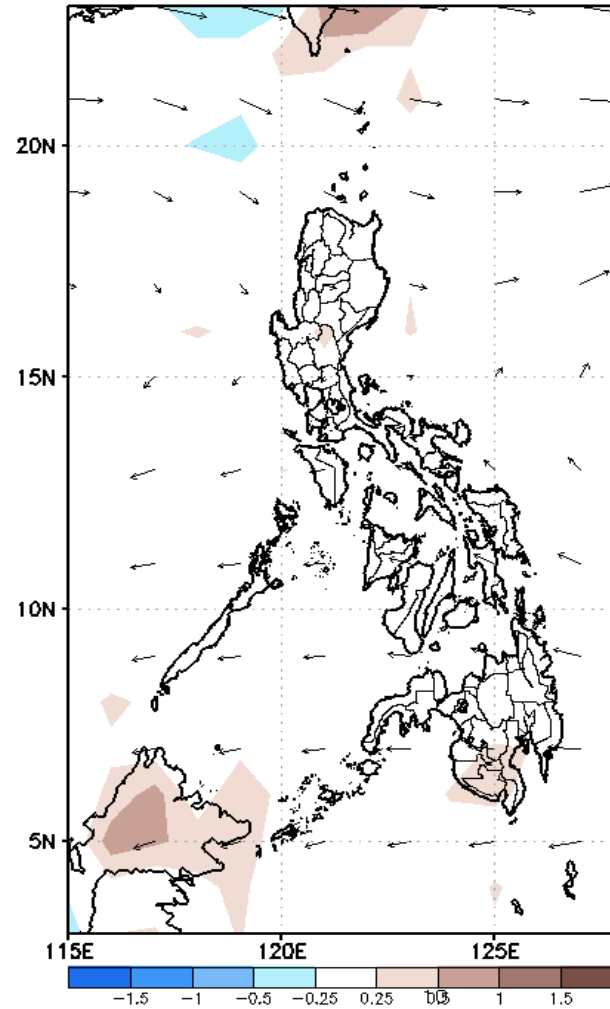
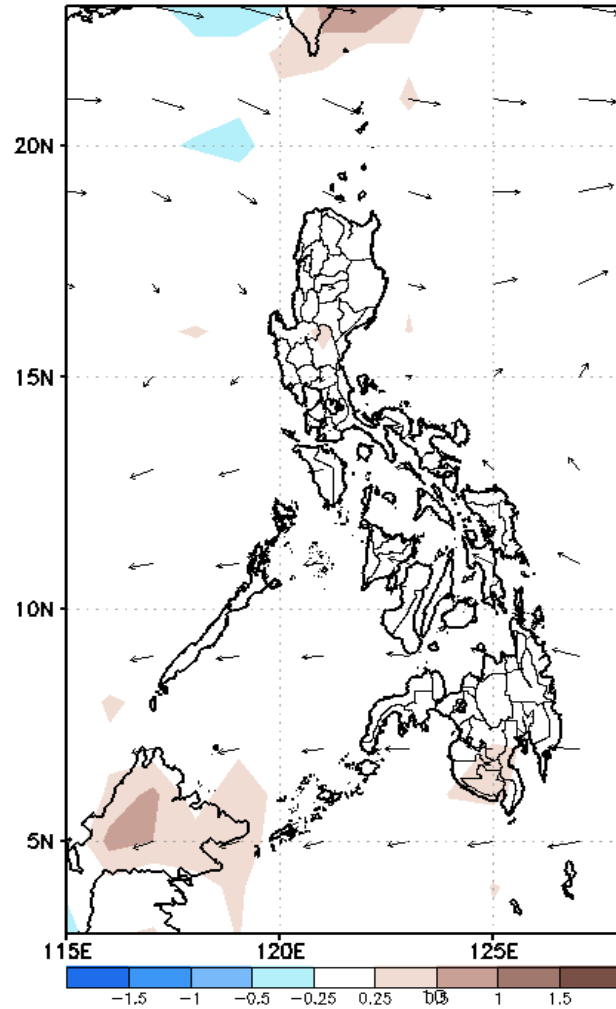
# Week 1 & Week 2 Forecast for the Philippines using GEFS Model



# GEFS Week-1 Forecasts: Divergence & Wind Anomaly

**Week 1: Sep 24-30, 2020**

GEFS Week-1 850-hPa Divergence and Wind Anomr    GEFS Week-1 700-hPa Divergence and Wind Anomr    GEFS Week-1 200-hPa Divergence and Wind Anomr  
Valid: 20200924 - 20200930    Valid: 20200924 - 20200930    Valid: 20200924 - 20200930



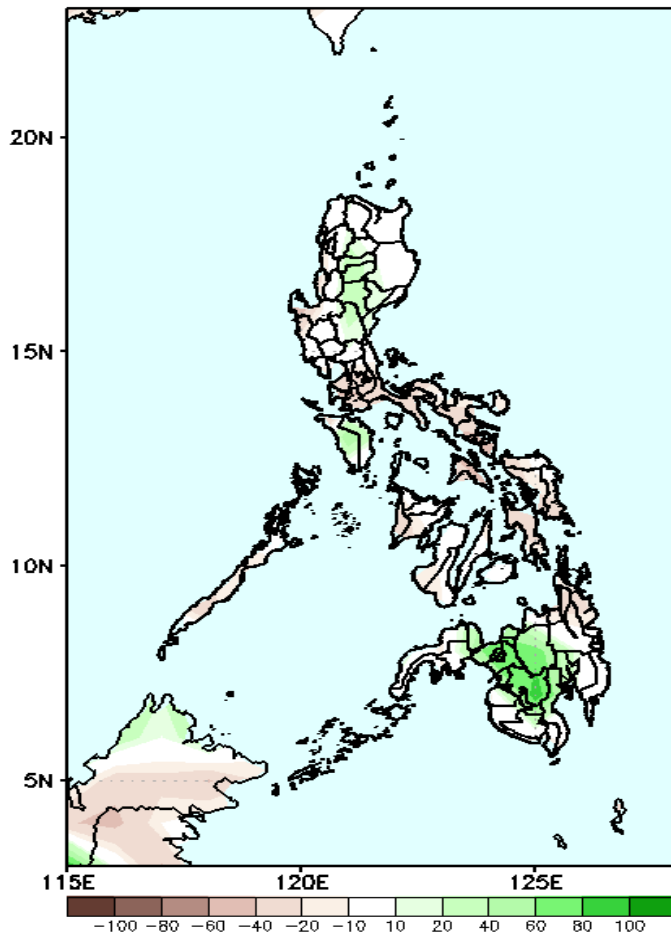
Upper level (200hPa) Divergence suggest likelihood of precipitation in most parts of northern, eastern and southern Luzon and MIMAROPA. Southwest Monsoon affecting western Luzon while easterlies affecting most parts of Visayas and Mindanao during the forecast period.



# Precipitation Anomaly and Exceedance Probability > 25/50 mm

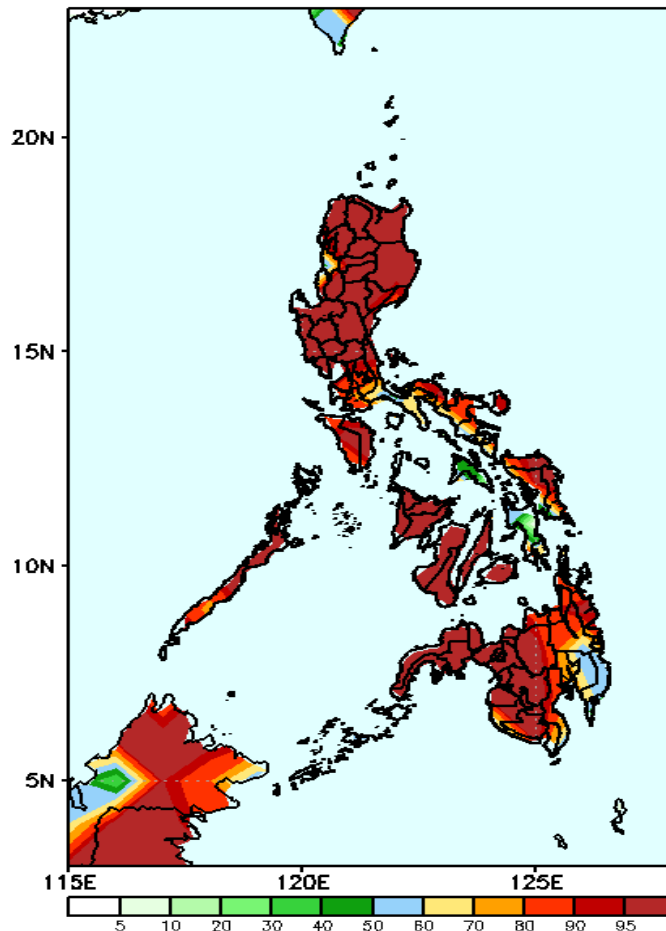
**Week 1: Sep 24-30, 2020**

GEFS Week-1 Precip. Anomaly  
Valid: 20200924 - 20200930



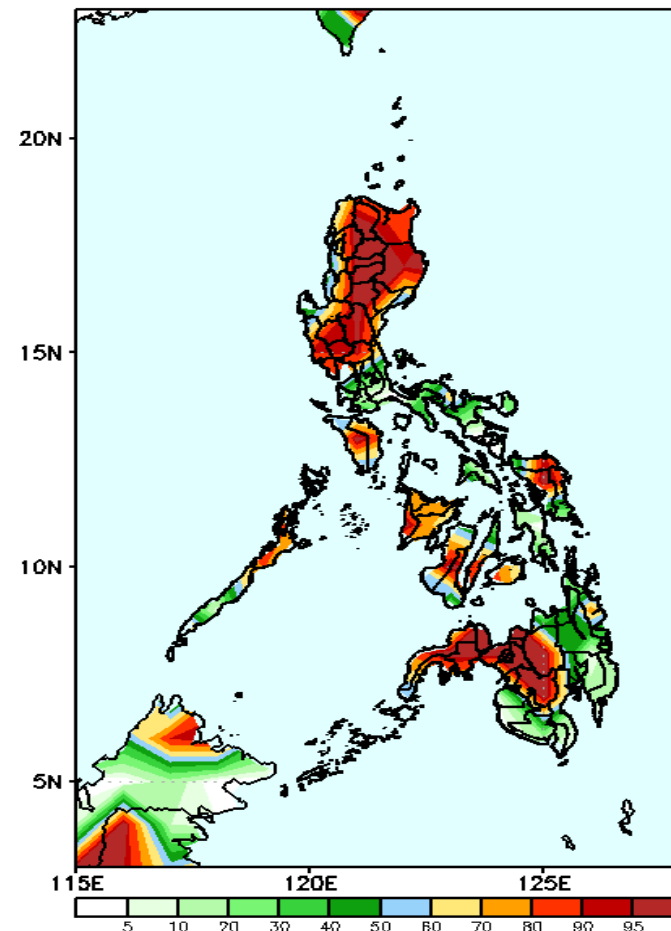
Increase of rainfall of 40-80mm in Bukidnon, Lanao provinces and North Cotabato is expected during the forecast period.

GEFS Week-1 Exceedance Prob. > 25mm  
Valid: 20200924 - 20200930



High probability of rainfall to exceed 25mm in most parts the country is expected during the forecast period.

GEFS Week-1 Exceedance Prob. > 50mm  
Valid: 20200924 - 20200930

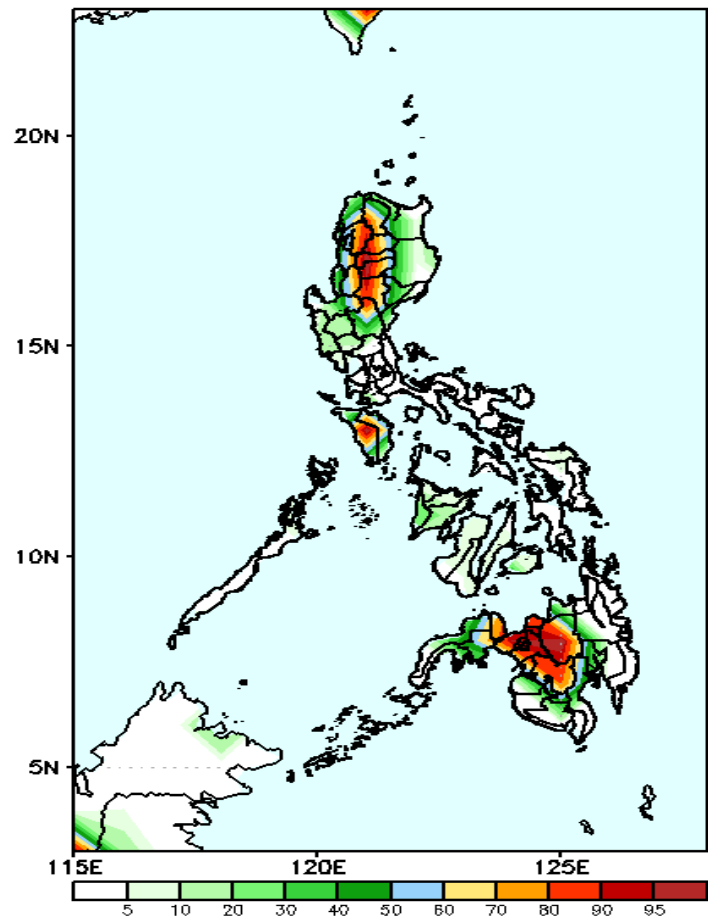


High probability of rainfall to exceed 50mm in most parts of Luzon, western Visayas & Samar provinces, Northern Mindanao, Lanao provinces, South Cotabato and Zamboanga Peninsula while less likely for the rest of the country during the forecast period.

# Exceedance Probability > 100/150/200 mm

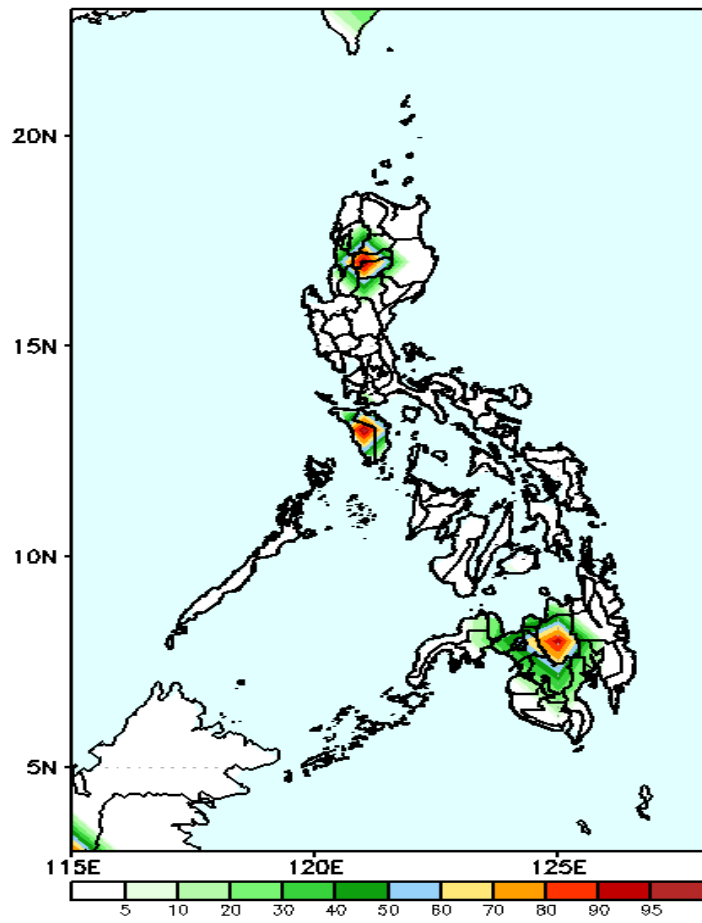
Week 1: Sep 24-30, 2020

GEFS Week-1 Exceedance Prob. > 100mm  
Valid: 20200924 - 20200930



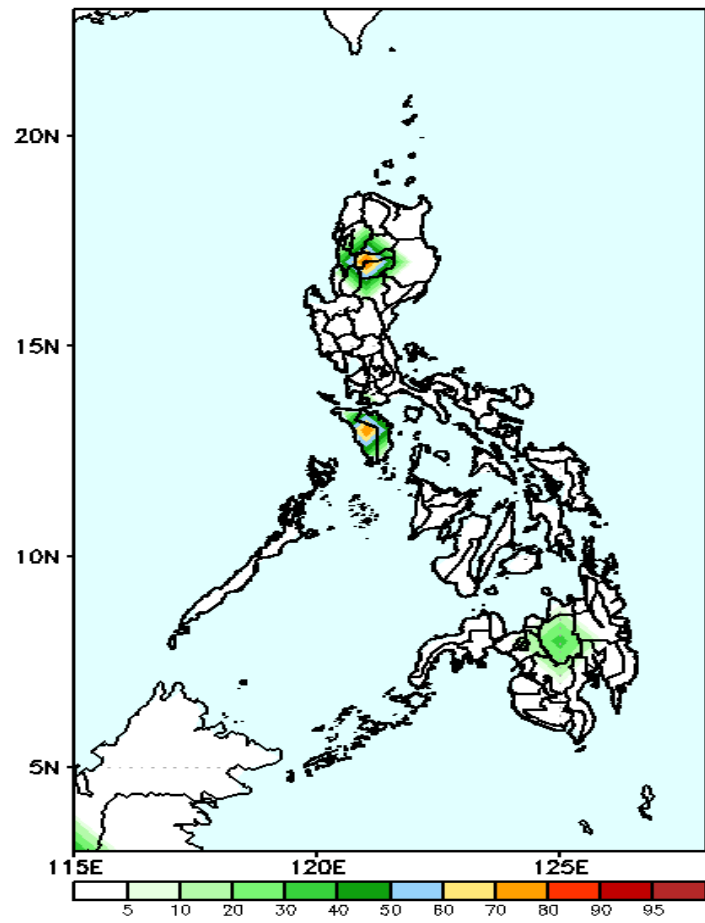
High probability of rainfall to exceed 100mm in Cordillera Region, Occ. Mindoro, Bukidnon, Lanao provinces, North Cotabato and Misamis Occ. is expected while less likely for the rest of the country during the forecast period.

GEFS Week-1 Exceedance Prob. > 150mm  
Valid: 20200924 - 20200930



70-95% probability of rainfall to exceed 150mm in Mt. Province, Ifugao, Mindoro and Bukidnon is expected while less likely for the rest of the country during the forecast period.

GEFS Week-1 Exceedance Prob. > 200mm  
Valid: 20200924 - 20200930

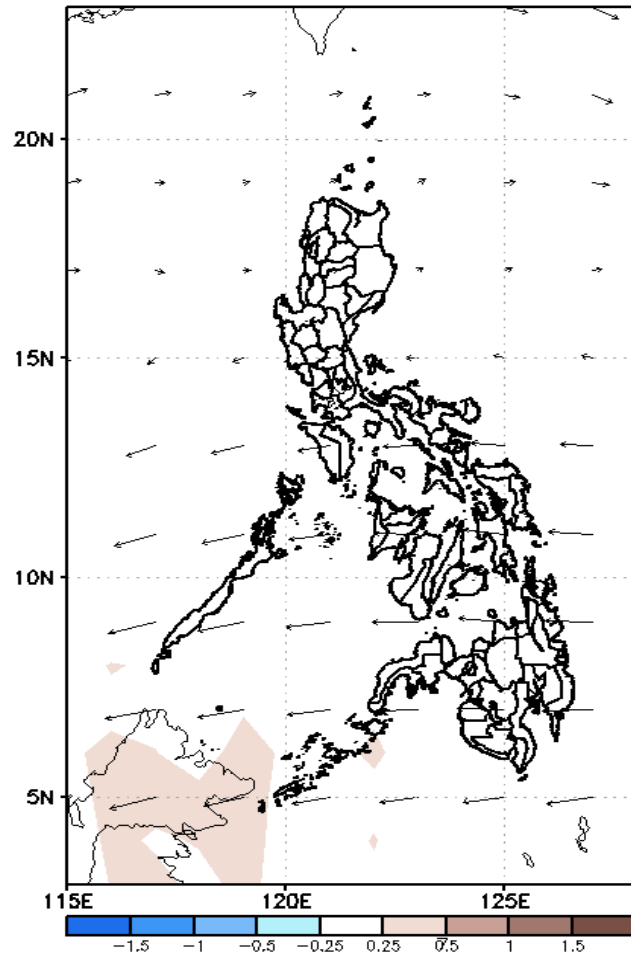


70-95% probability of rainfall to exceed 200mm in Mt. Province, Ifugao and Mindoro is expected while less likely for the rest of the country during the forecast period.

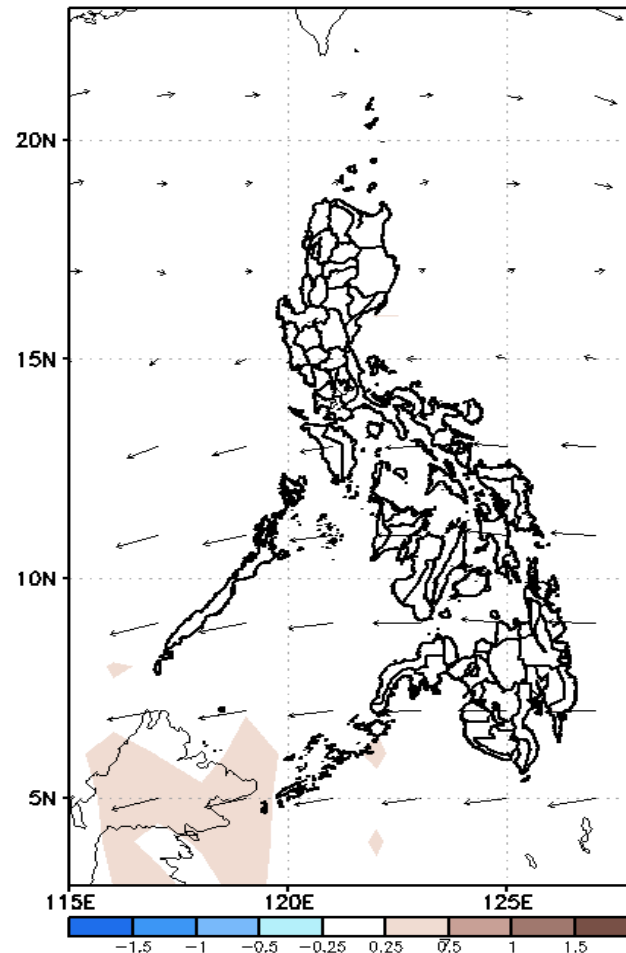
# GEFS Week-2 Forecasts: Divergence & Wind Anomaly

**Week 2: Oct 01-07, 2020**

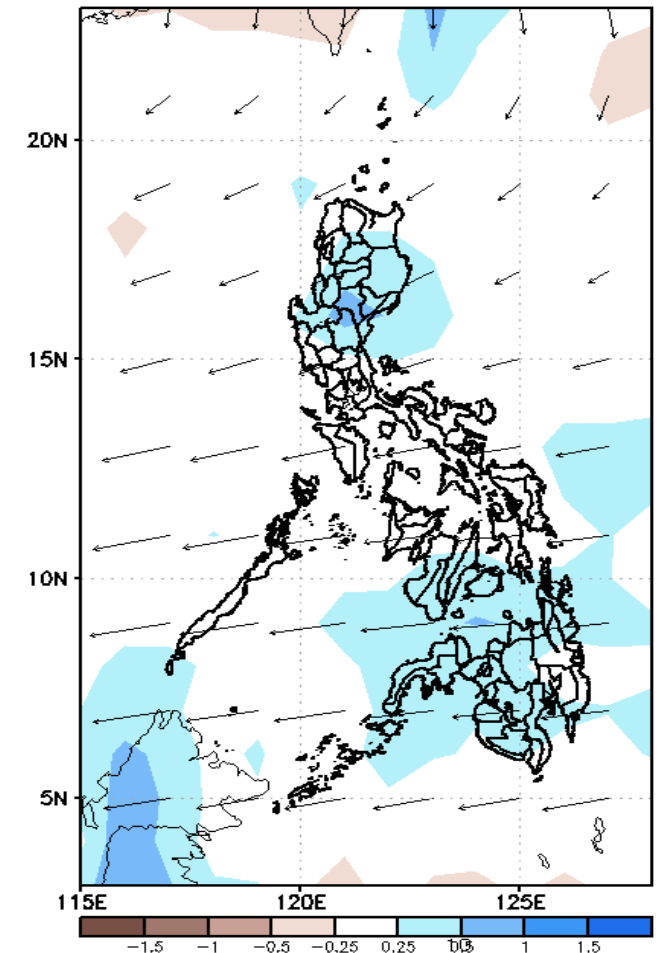
GEFS Week-2 850-hPa Divergence and Wind Anom  
Valid: 20201001 - 20201007



GEFS Week-2 700-hPa Divergence and Wind Anom  
Valid: 20201001 - 20201007



GEFS week-2 200-hPa Divergence and Wind Anom  
Valid: 20201001 - 20201007

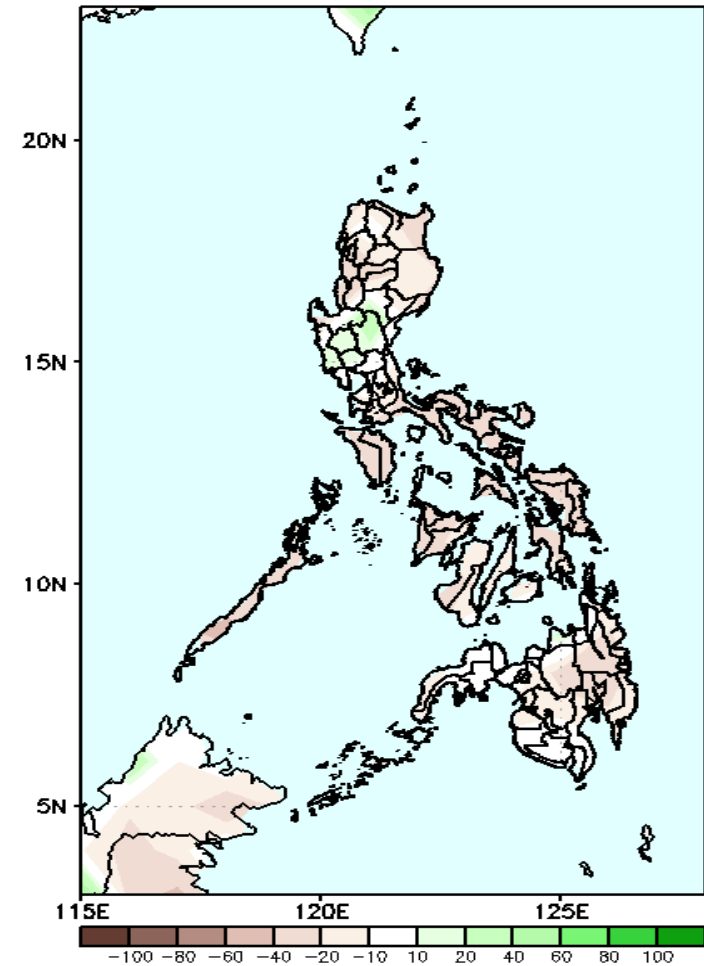


Upper level (200hPa) Divergence suggest likelihood of precipitation in most parts of northern and central Luzon, central Visayas and most parts of Mindanao. Southwest Monsoon affecting northwestern Luzon while easterlies affecting most parts of the country during the forecast period.

# Precipitation Anomaly and Exceedance Probability > 25/50 mm

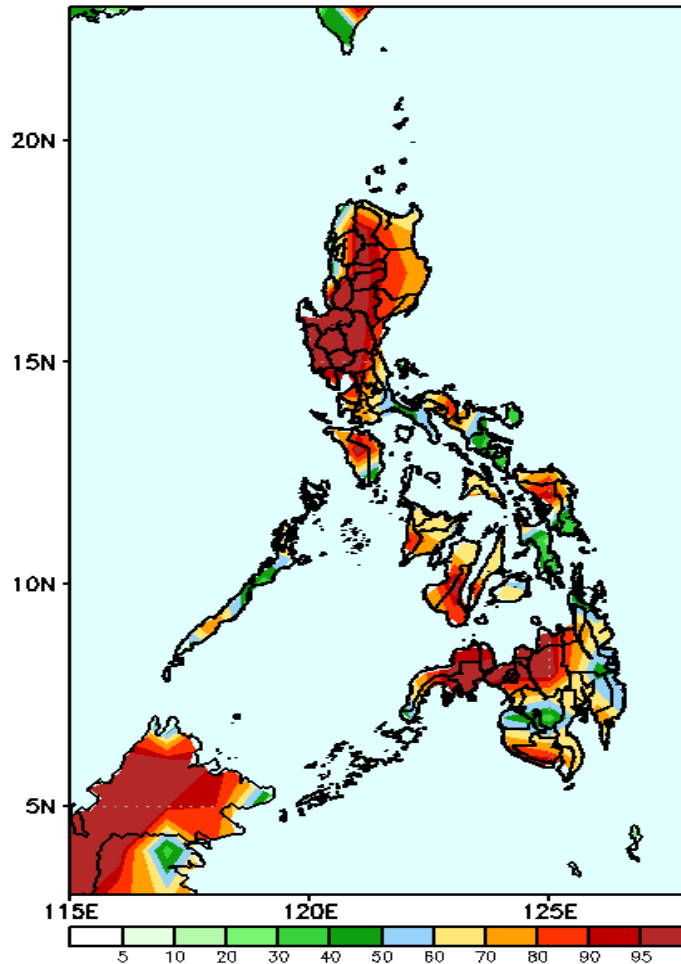
**Week 2: Oct 01-07, 2020**

GEFS Week-2 Precip Anomaly  
Valid: 20201001 – 20201007



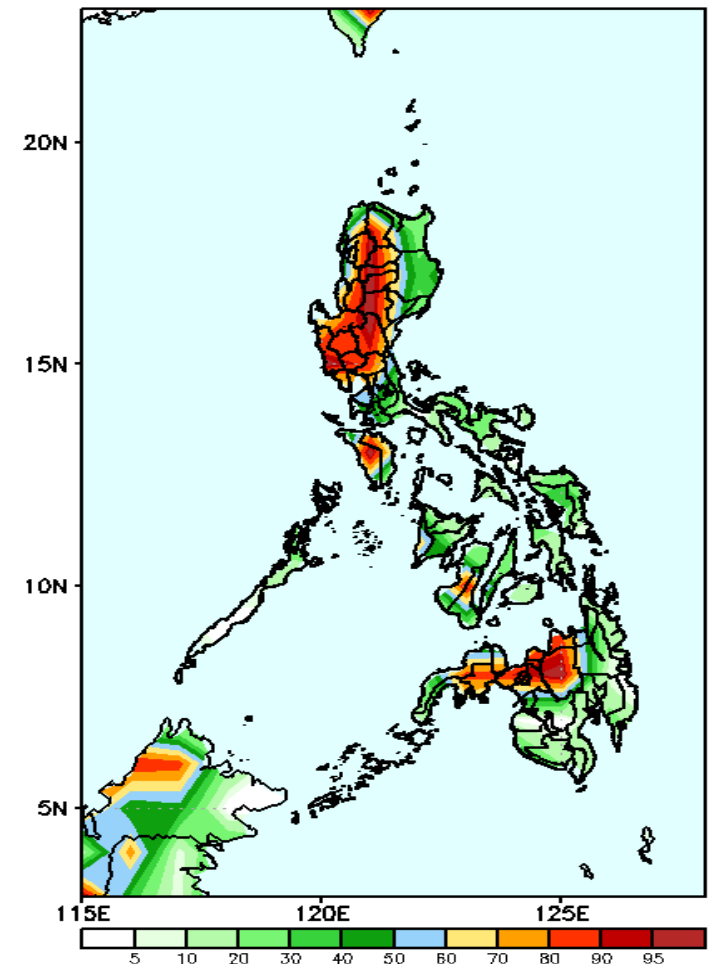
Rainfall deficit of 40-60mm in most parts of the country is expected while increase of up to 40mm in Central Luzon during the forecast period.

GEFS Week-2 Exceedance Prob. > 25mm  
Valid: 20201001 – 20201007



High probability of rainfall to exceed 25mm in most parts the country is expected during the forecast period.

GEFS Week-2 Exceedance Prob. > 50mm  
Valid: 20201001 – 20201007



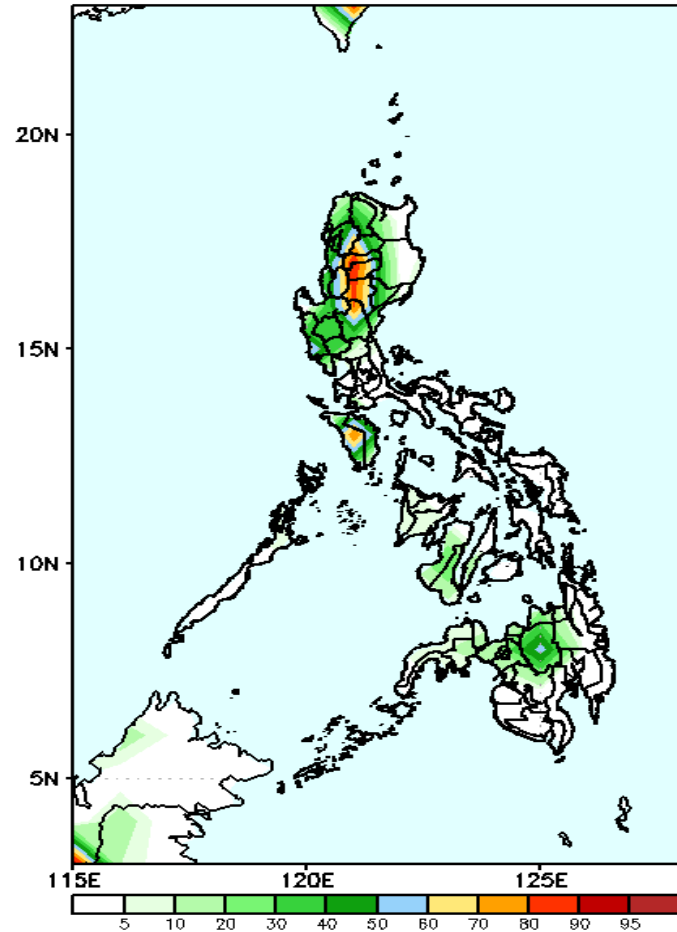
High probability of rainfall to exceed 50mm in western and Central parts of Luzon, Mindoro, Bukidnon, Lanao provinces and Zamboanga del Sur is expected while less likely for the rest of the country during the forecast period.



# Exceedance Probability > 100/150/200 mm

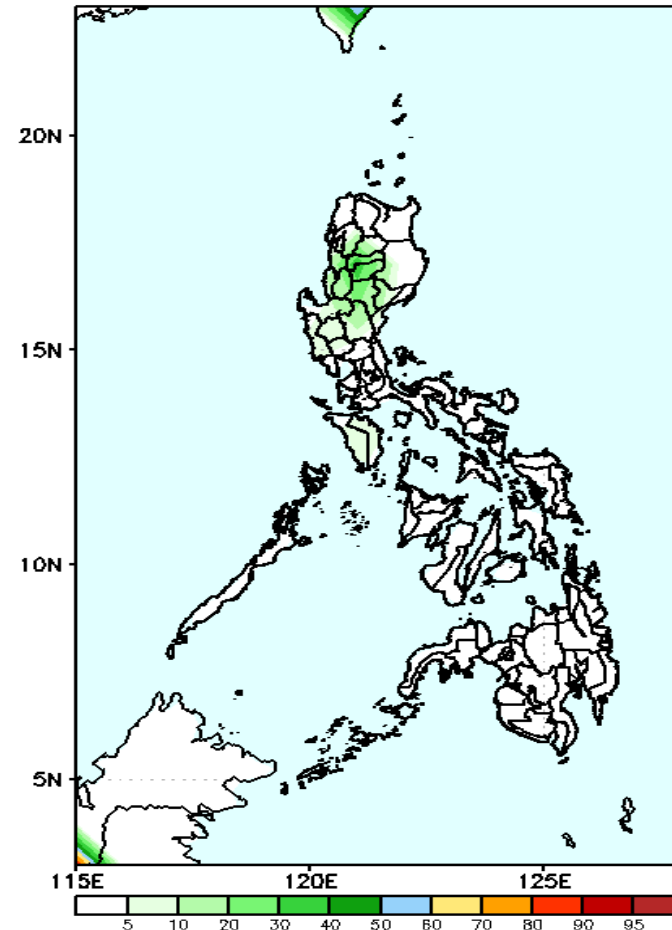
Week 2: Oct 01-07, 2020

GEFS Week-2 Exceedance Prob. > 100mm  
Valid: 20201001 - 20201007



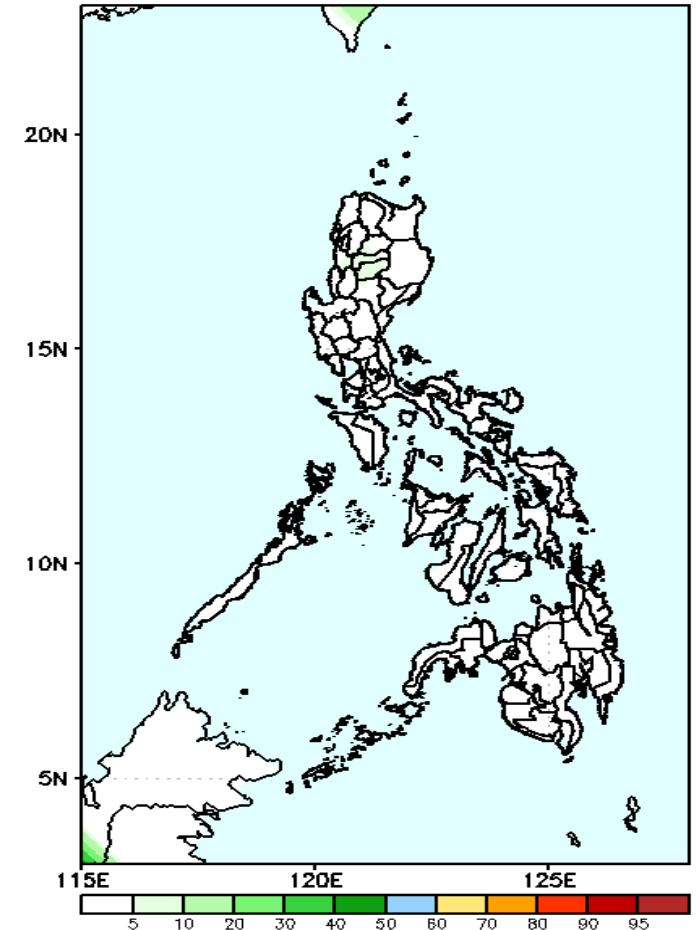
60-95% probability of rainfall to exceed 100mm in Cordillera Region while less likely for the rest of the country during the forecast period.

GEFS Week-2 Exceedance Prob. > 150  
Valid: 20201001 - 20201007



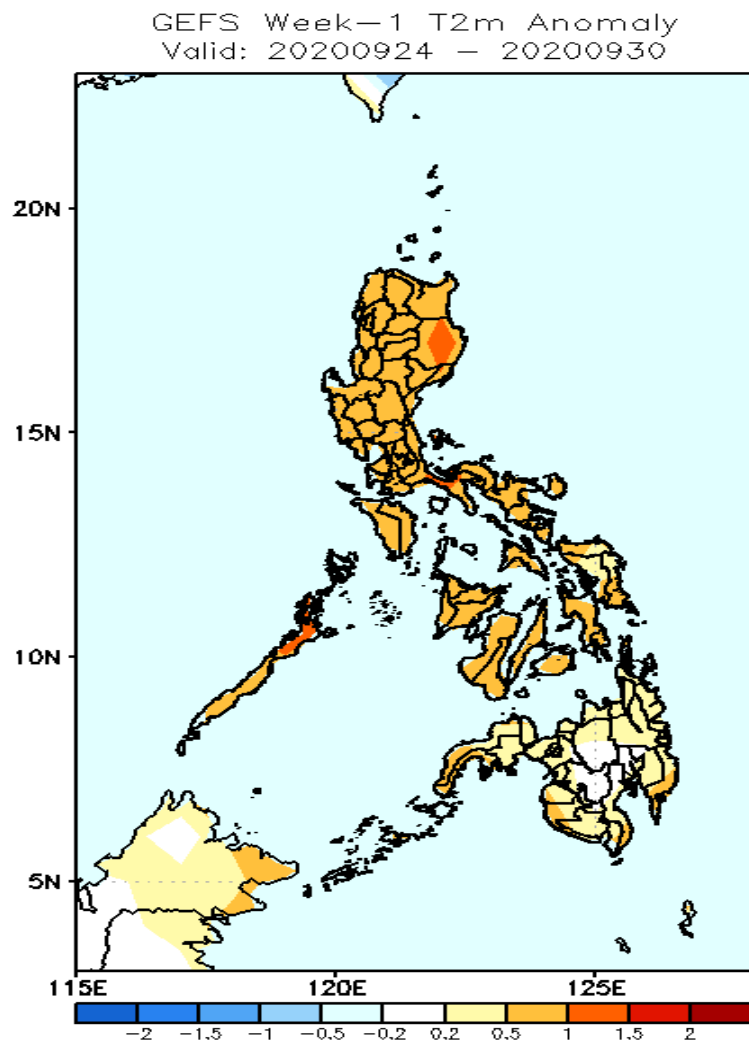
Less probability of rainfall to exceed 100mm in most parts of the country during the forecast period.

GEFS Week-2 Exceedance Prob. > 200mm  
Valid: 20201001 - 20201007



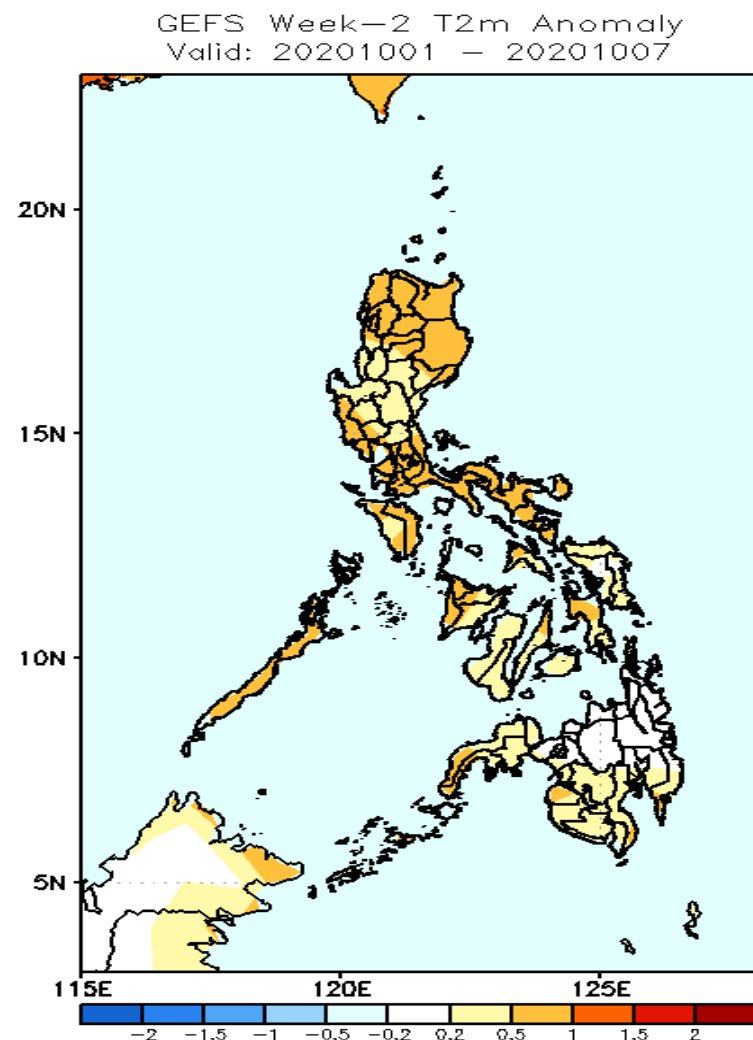
Less probability of rainfall to exceed 200mm in most parts of the country during the forecast period.

# GEFS Week-1 & 2 Forecasts: T2m Anomaly



**2m Temperature Week 1: Sep 24-30, 2020**

Slightly warmer than average surface air temperature will likely experience in most parts Luzon and Visayas (warmer in Isabela) while average surface air temperature in Mindanao during the forecast period.



**2m Temperature Week 2: Oct 01-07, 2020**

Slightly warmer than average surface air temperature will likely experience in most parts Luzon and Visayas while average surface air temperature in Mindanao during the forecast period.