



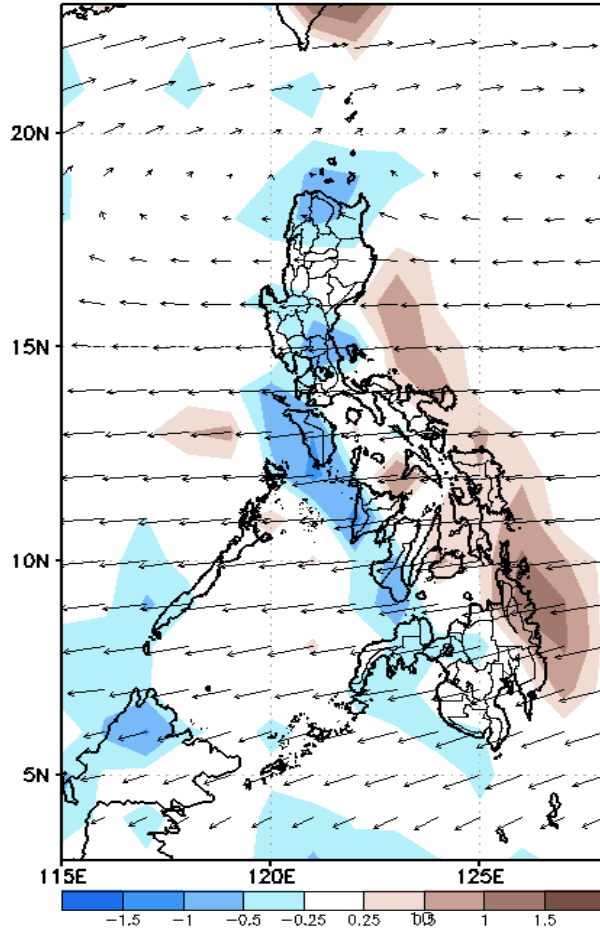
Week 1 & Week 2 Forecast for the Philippines using GEFS Model



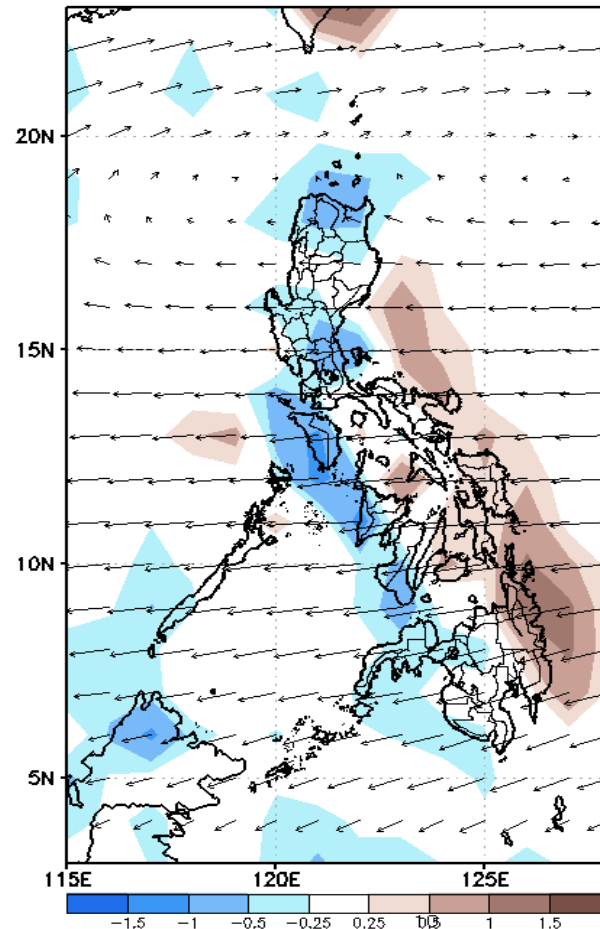
GEFS Week-1 Forecasts: Divergence & Wind Anomaly

Week 1: Feb 25- Mar 03, 2022

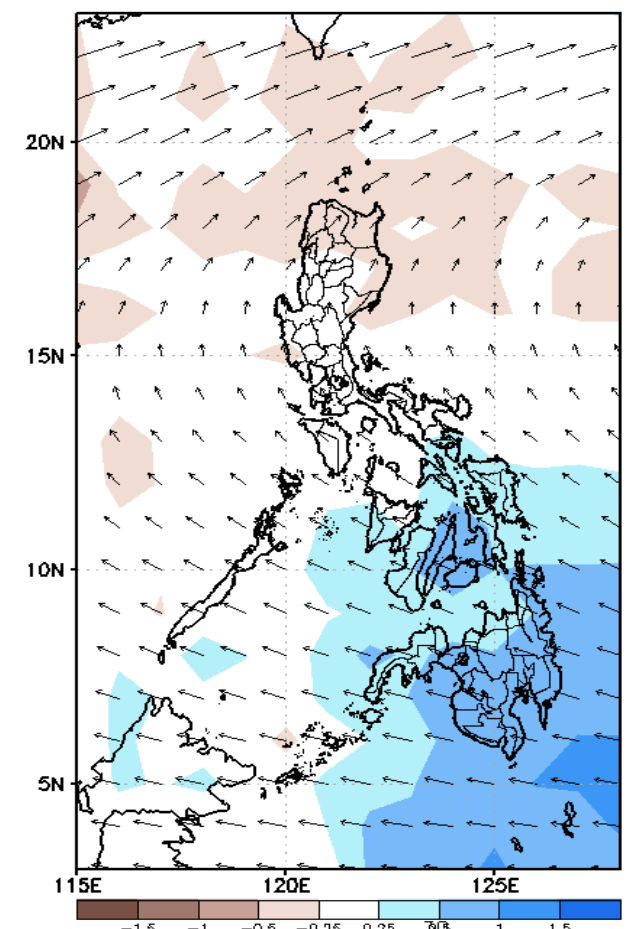
GEFS Week-1 850-hPa Divergence and Wind Anom
Valid: 20220225 - 20220303



GEFS Week-1 700-hPa Divergence and Wind Anom
Valid: 20220225 - 20220303



GEFS Week-1 200-hPa Divergence and Wind Anom
Valid: 20220225 - 20220303

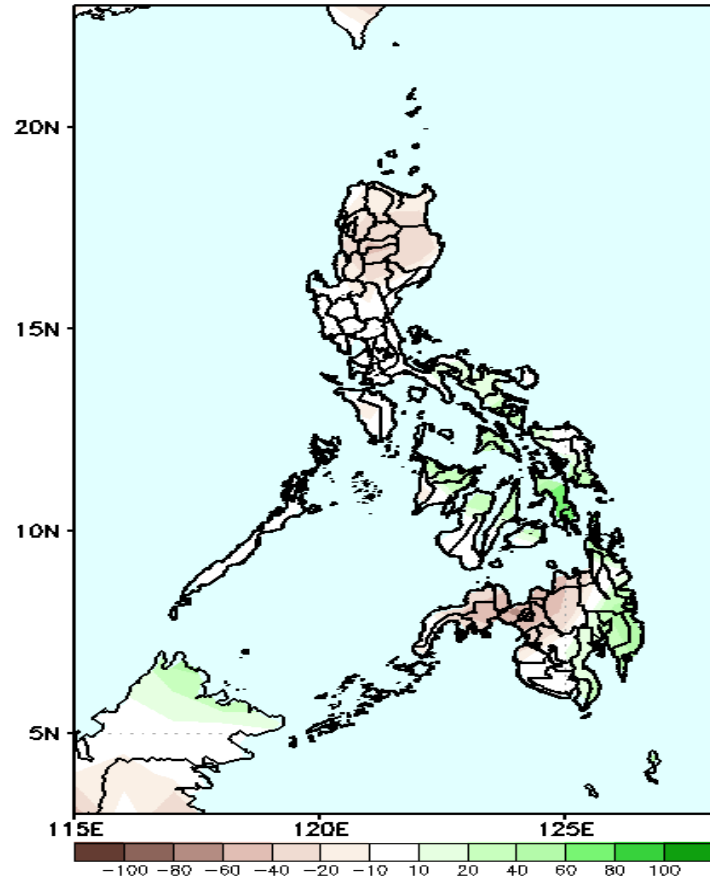


Upper and low level Divergence suggest a likelihood of light to moderate precipitation in most parts of Visayas and Mindanao. Northeast Monsoon affecting Northern Luzon while Easterlies affecting the rest of the country during the forecast period.

Precipitation Anomaly and Exceedance Probability > 25/50 mm

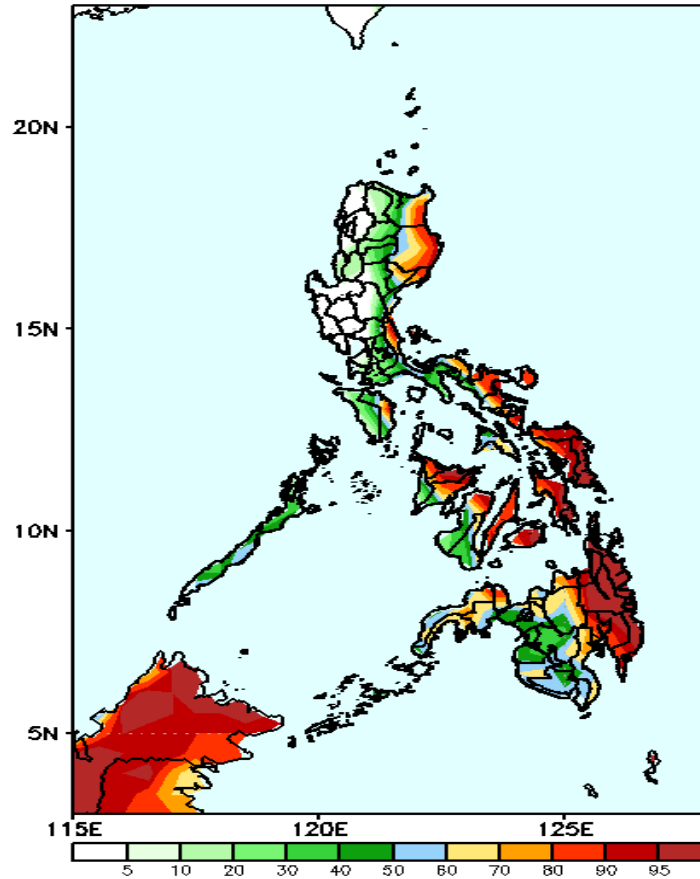
Week 1: Feb 25- Mar 03, 2022

GEFS Week-1 Precip Anomaly
Valid: 20220225 - 20220303



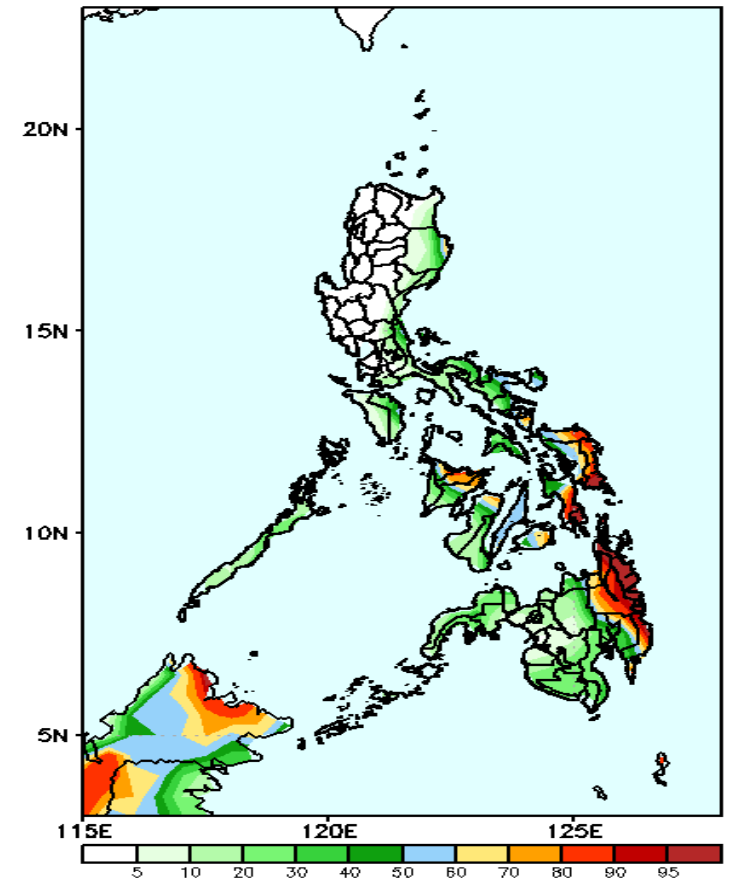
Rainfall deficit of 30-70mm in northern Luzon & northern Mindanao while 40-80mm increase of rainfall in Southern Leyte and western Mindanao is expected during the forecast period.

GEFS Week-1 Exceedance Prob. > 25mm
Valid: 20220225 - 20220303



High probability of rainfall to exceed 25mm in Cagayan & Isabela, parts of Quezon province, Occidental Mindoro, Bicol Region, most parts of Visayas and Mindanao while less likely for the rest of Luzon during the forecast period.

GEFS Week-1 Exceedance Prob. > 50mm
Valid: 20220225 - 20220303



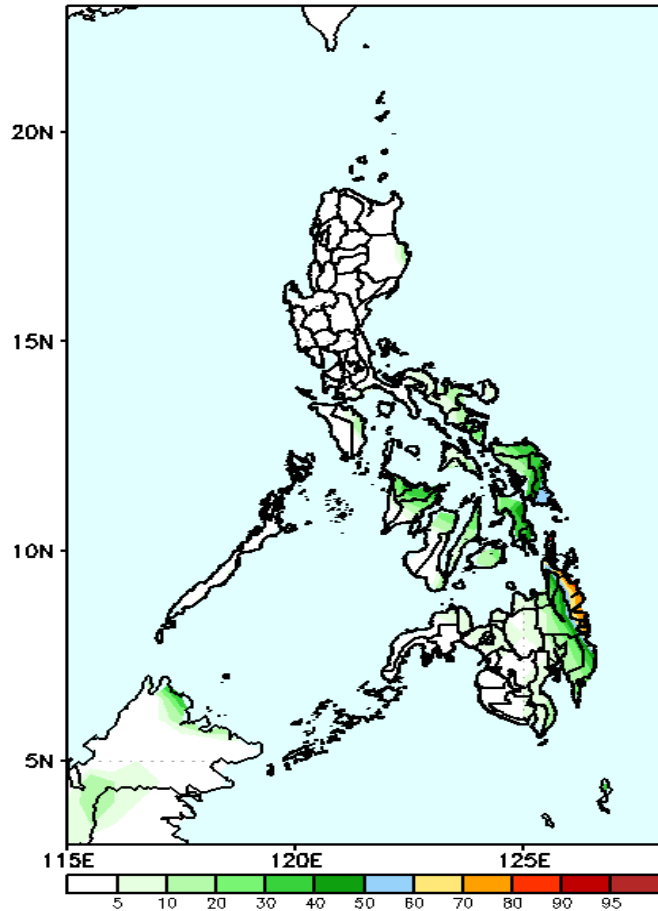
High probability of rainfall to exceed 50mm in Eastern Samar, Southern Leyte, Aklan, Capiz, Bohol and eastern Mindanao while less likely for the rest of the country during the forecast period.



Exceedance Probability > 100/150/200 mm

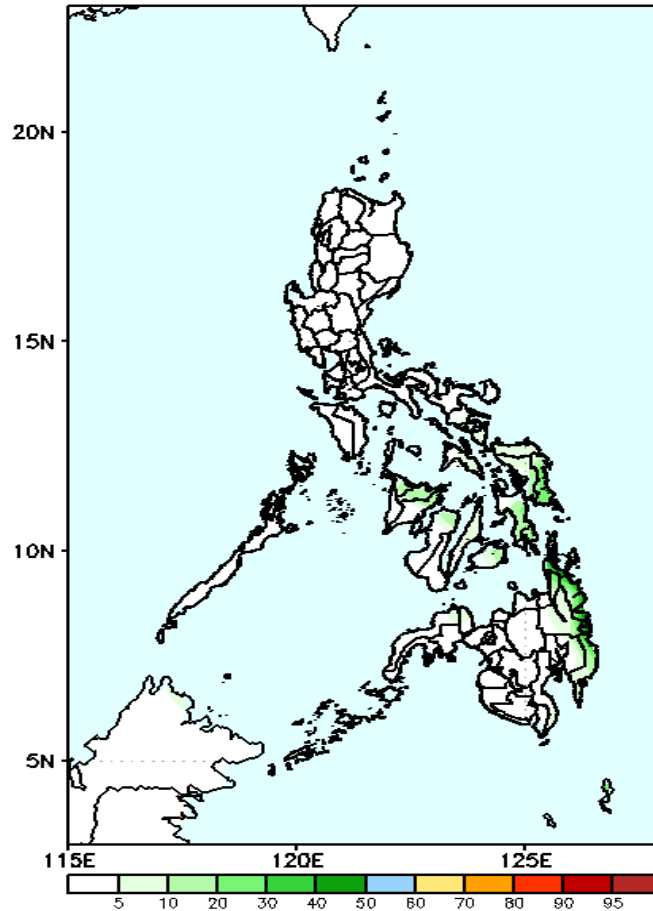
Week 1: Feb 25- Mar 03, 2022

GEFS Week-1 Exceedance Prob. > 100mm
Valid: 20220225 - 20220303



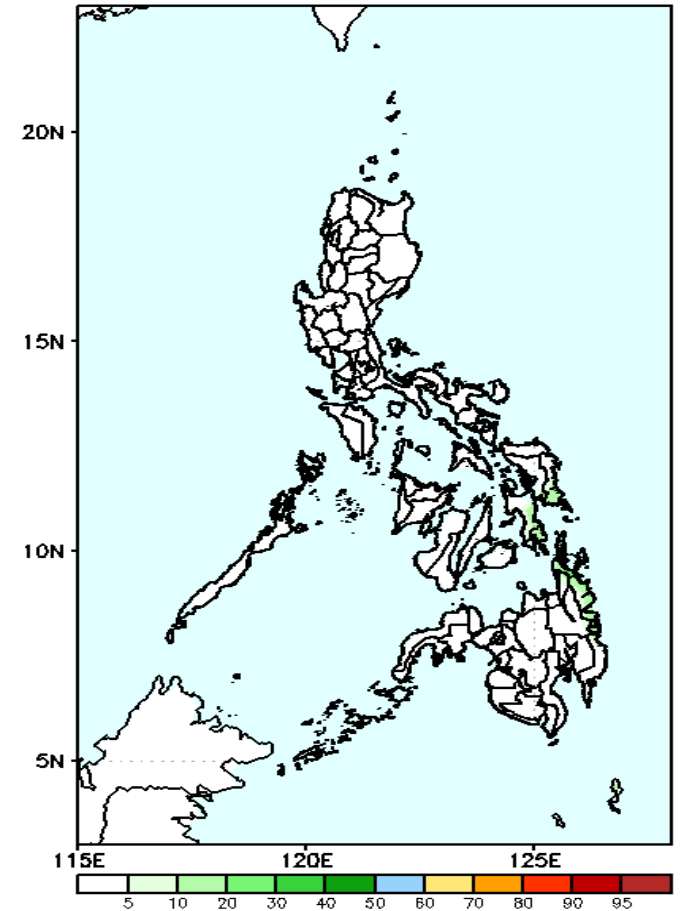
Low probability of rainfall to exceed 100mm in most parts of the country except in the eastern parts of Mindanao where there is 50-85% chance during the forecast period.

GEFS Week-1 Exceedance Prob. > 150mm
Valid: 20220225 - 20220303



Low probability of rainfall to exceed 150mm in most parts of the country during the forecast period.

GEFS Week-1 Exceedance Prob. > 200mm
Valid: 20220225 - 20220303

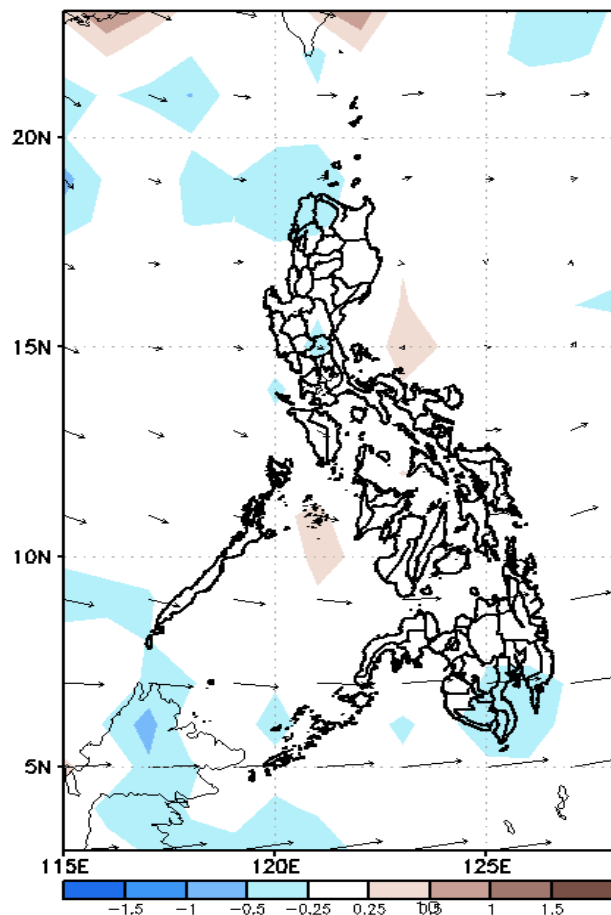


Low probability of rainfall to exceed 200mm in most parts of the country during the forecast period.

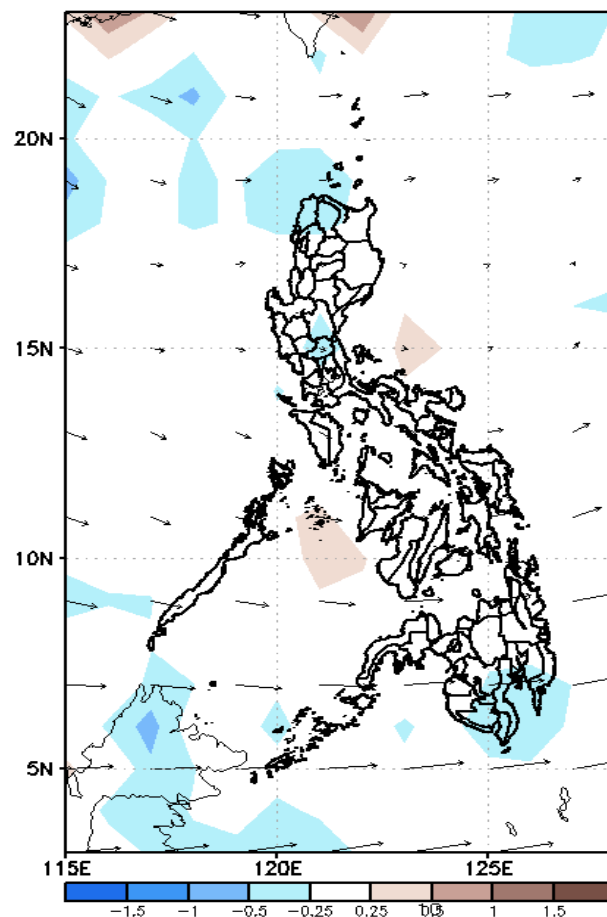
GEFS Week-2 Forecasts: Divergence & Wind Anomaly

Week 2: Mar 04-08, 2022

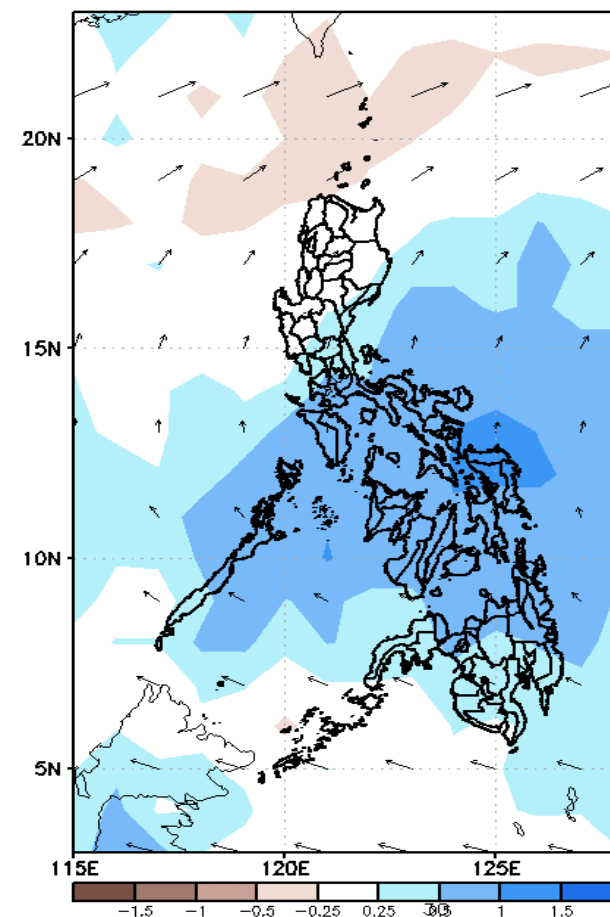
GEFS Week-2 850-hPa Divergence and Wind Anom
Valid: 20220304 - 20220310



GEFS Week-2 700-hPa Divergence and Wind Anom
Valid: 20220304 - 20220310



GEFS week-2 200-hPa Divergence and Wind Anom.
Valid: 20220304 - 20220310

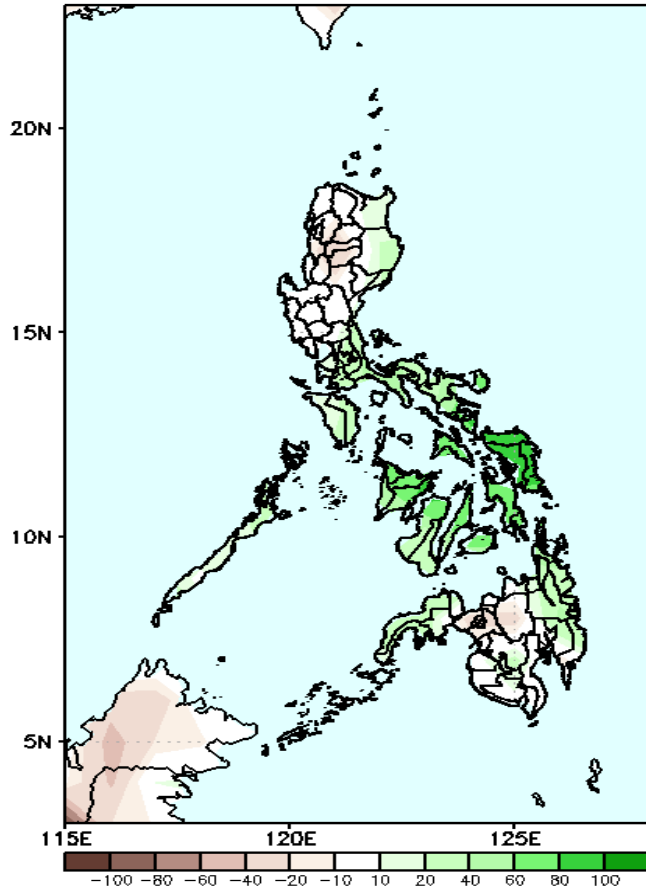


Upper and low level Divergence suggest a likelihood of light to moderate precipitation in most parts of the country except in northern Luzon. Easterlies affecting most parts of the country during the forecast period.

Precipitation Anomaly and Exceedance Probability > 25/50 mm

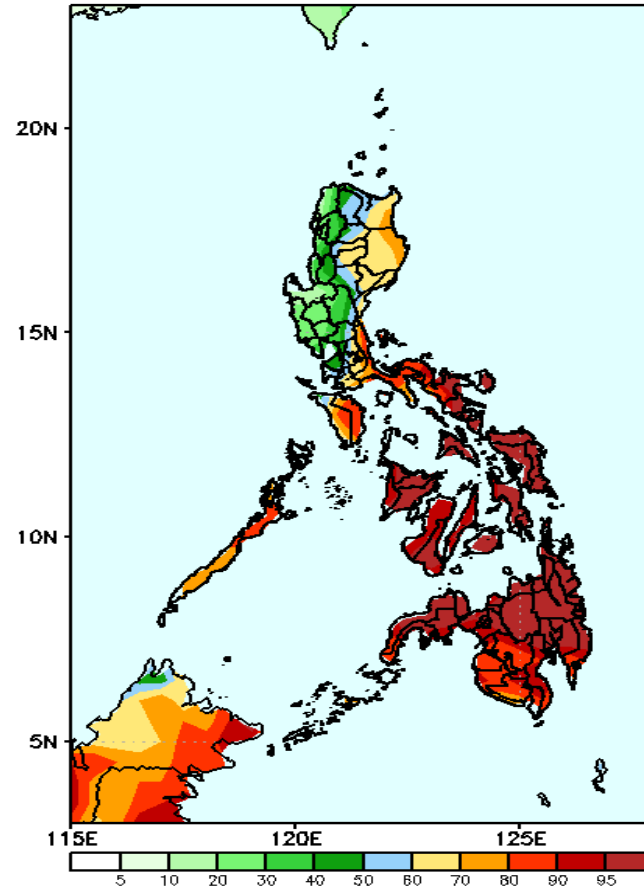
Week 2: Mar 04-08, 2022

GEFS Week-2 Precip. Anomaly
Valid: 20220304 – 20220310



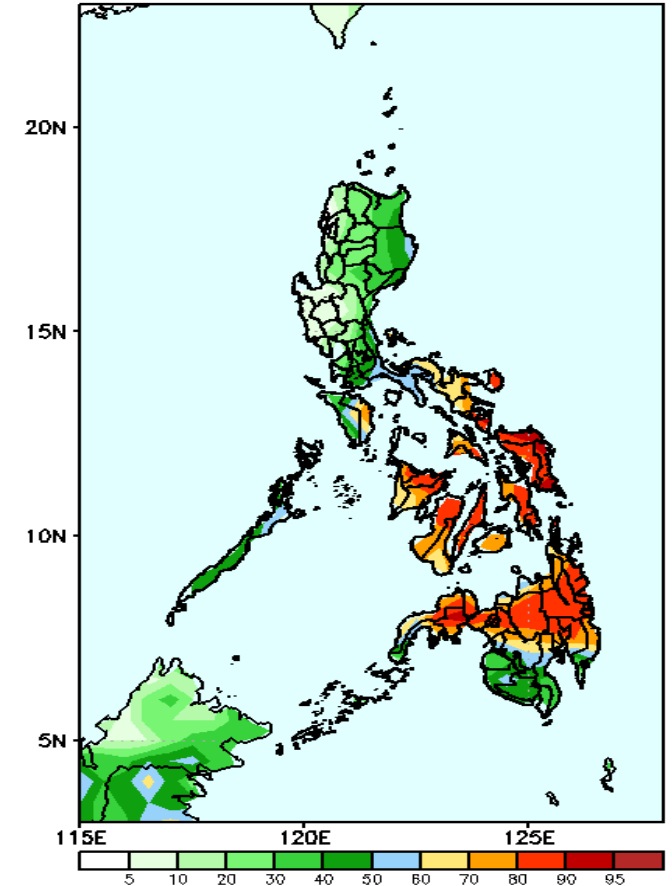
Increase of rainfall of 40-100mm is expected in most parts of Southern Luzon and Visayas and eastern Mindanao during the forecast period.

GEFS Week-2 Exceedance Prob. > 25mm
Valid: 20220304 – 20220310



High probability of rainfall to exceed 25mm in most parts of the country except in Ilocos Region & Central Luzon where there is low chance during the forecast period.

GEFS Week-2 Exceedance Prob. > 50mm
Valid: 20220304 – 20220310

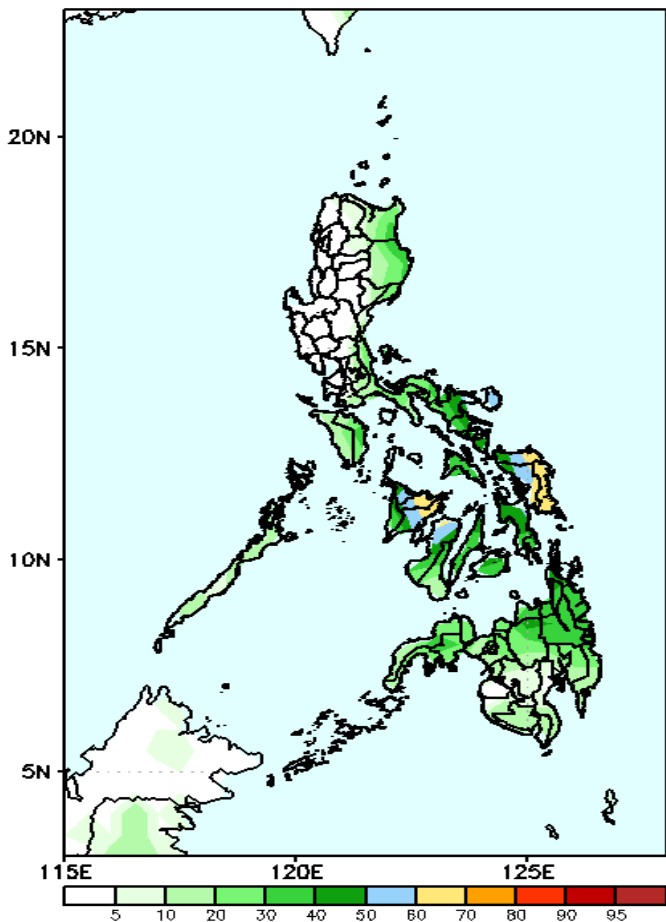


High probability of rainfall to exceed 50mm in Bicol Region and most parts of Visayas and Mindanao (except southwestern parts) while less likely for the rest of the country during the forecast period

Exceedance Probability > 100/150/200 mm

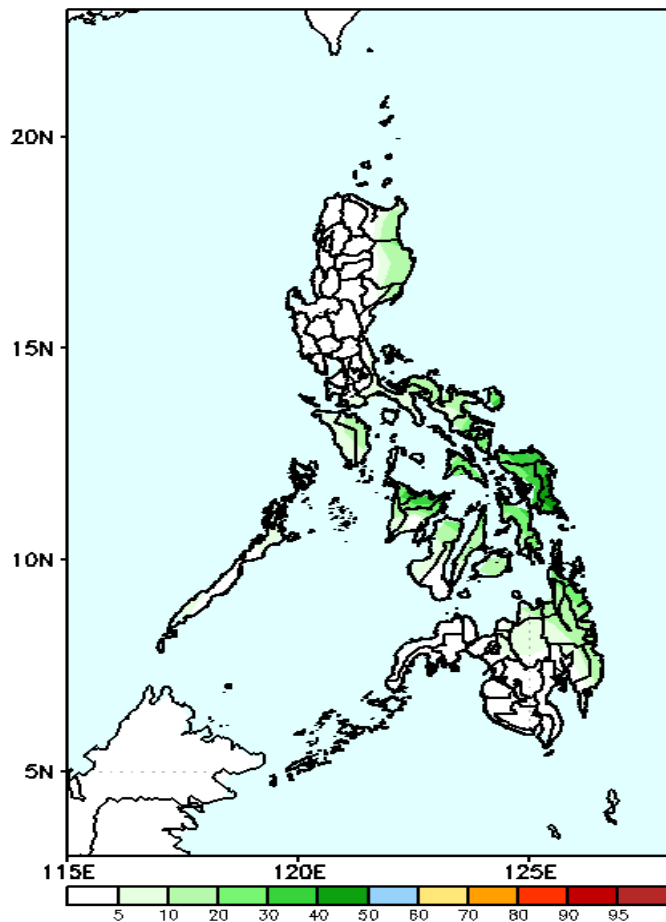
Week 2: Mar 04-08, 2022

GEFS Week-2 Exceedance Prob. > 100mm
Valid: 20220304 – 20220310



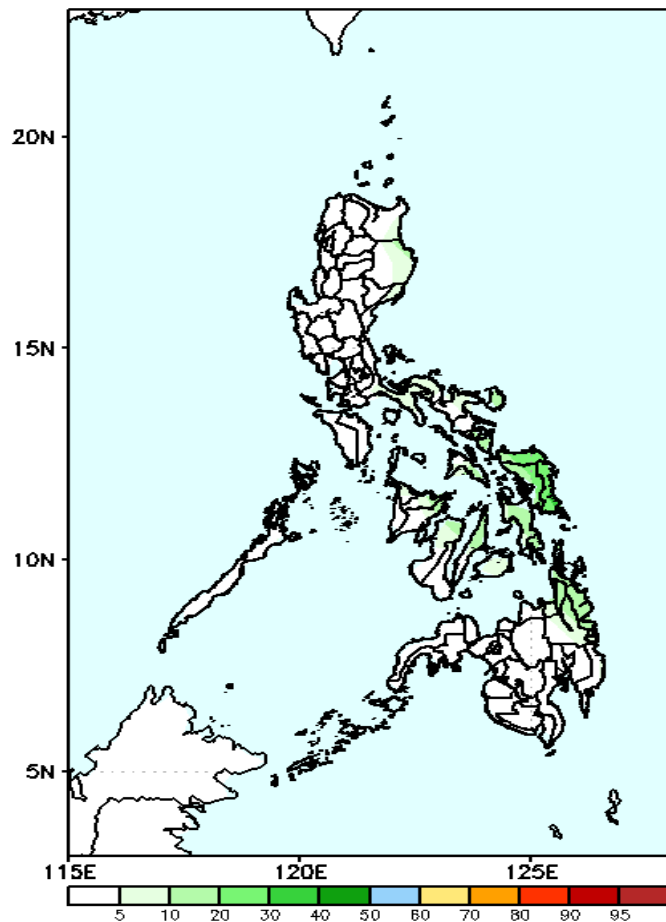
Low probability of rainfall to exceed 100mm in most parts of the country during the forecast period.

GEFS Week-2 Exceedance Prob. > 150mm
Valid: 20220304 – 20220310



Low probability of rainfall to exceed 150mm in most parts of the country during the forecast period.

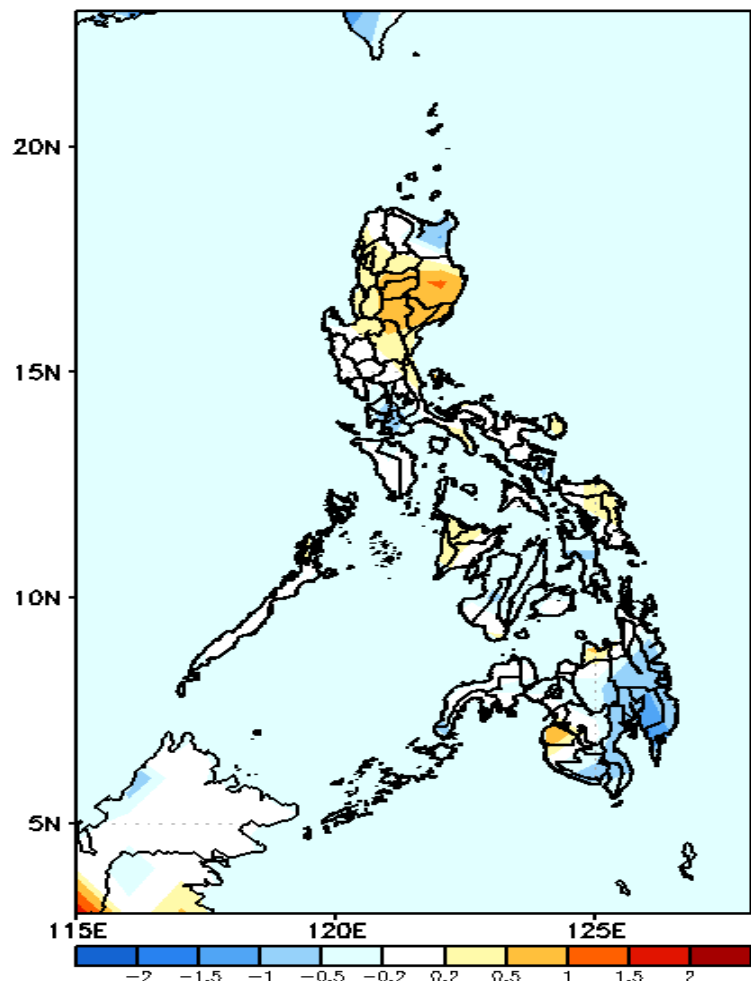
GEFS Week-2 Exceedance Prob. > 200mm
Valid: 20220304 – 20220310



Low probability of rainfall to exceed 200mm in most parts of the country during the forecast period.

GEFS Week-1 & 2 Forecasts: T2m Anomaly

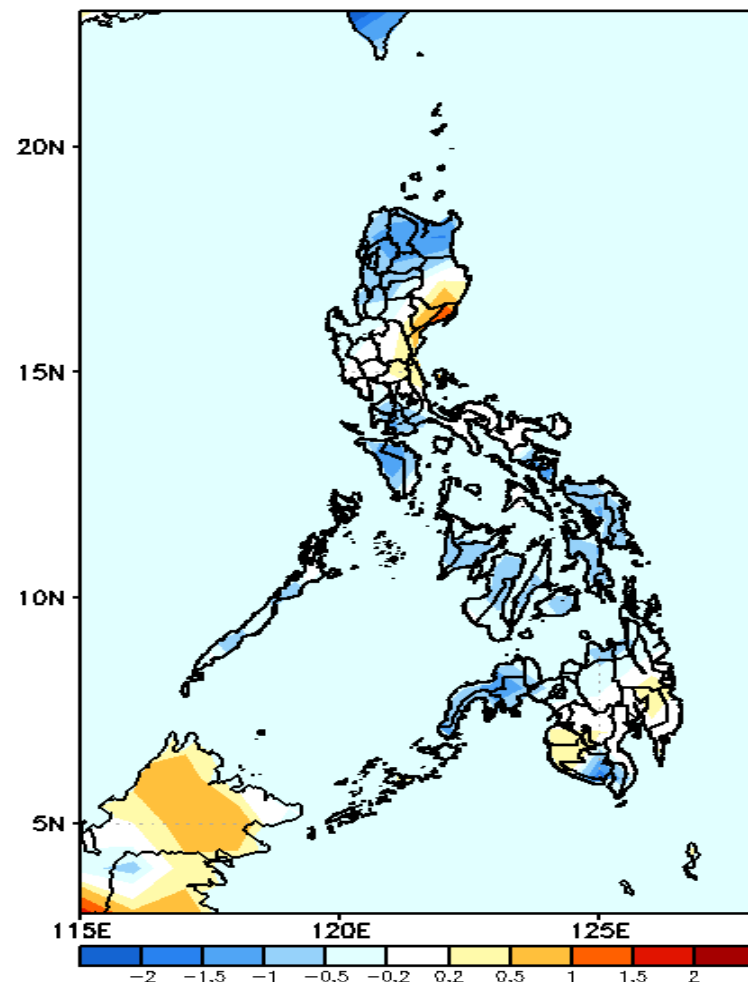
GEFS Week-1 T2m Anomaly
Valid: 20220225 - 20220303



2m Temperature Week 1: Feb 25- Mar 03, 2022

Average to slightly cooler surface air temperature will likely experience in most parts of the country except in Isabela, Quirino, Aurora, Cordillera Region and Maguindanao where warmer temperature is expected during the forecast period.

GEFS Week-2 T2m Anomaly
Valid: 20220304 - 20220310



2m Temperature Week 2: Mar 04-08, 2022

Cooler than average surface air temperature will likely experience in northern Luzon, Mindoro, most parts of Visayas, Zamboanga Peninsula, Misamis Oriental & South Cotabato while average to slightly cooler for the rest of the country during the forecast period.