



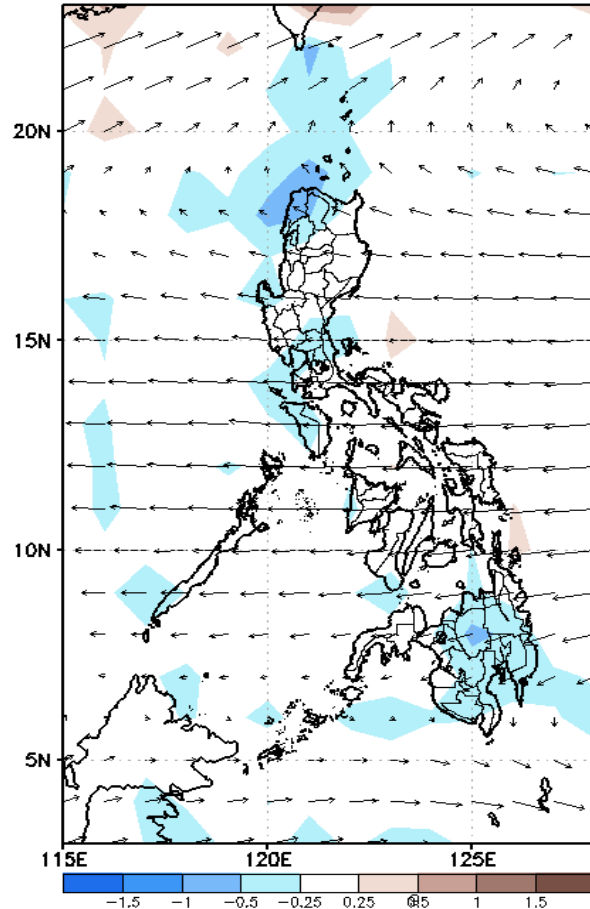
Week 1 & Week 2 Forecast for the Philippines using GEFS Model



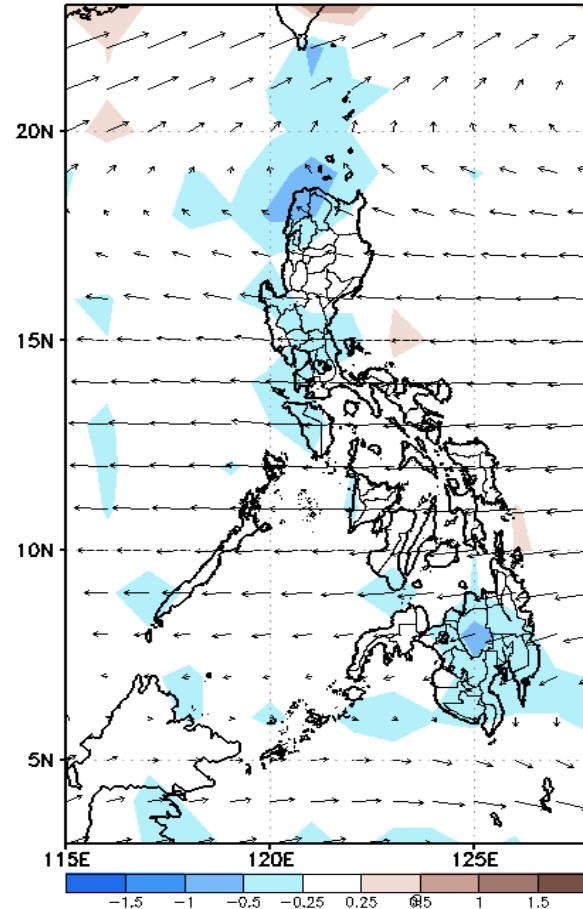
GEFS Week-1 Forecasts: Divergence & Wind Anomaly

Week 1: Mar 25-31, 2022

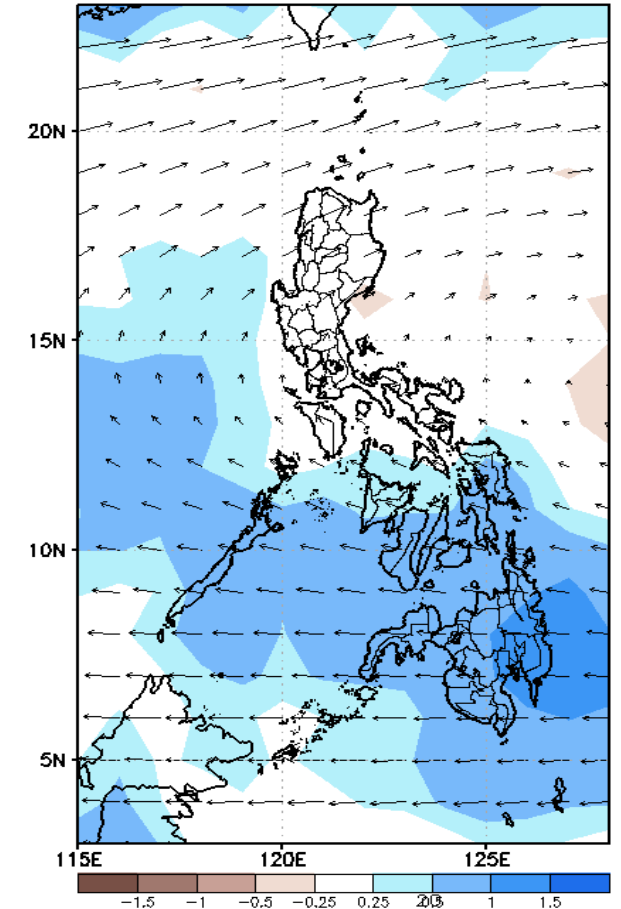
GEFS Week-1 850-hPa Divergence and Wind Anomaly
Valid: 20220325 - 20220331



GEFS Week-1 700-hPa Divergence and Wind Anomaly
Valid: 20220325 - 20220331



GEFS Week-1 200-hPa Divergence and Wind Anomaly
Valid: 20220325 - 20220331

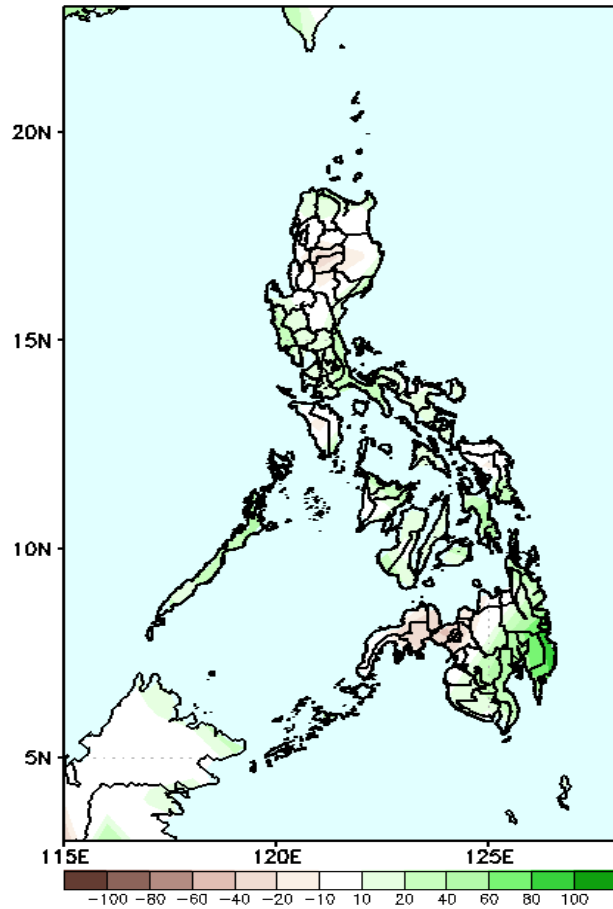


Upper and low level Divergence suggest a likelihood of light to moderate precipitation in Palawan and most parts of Visayas and Mindanao. Easterlies affecting most parts of the country attributing to warmer temperatures during the forecast period.

Precipitation Anomaly and Exceedance Probability > 25/50 mm

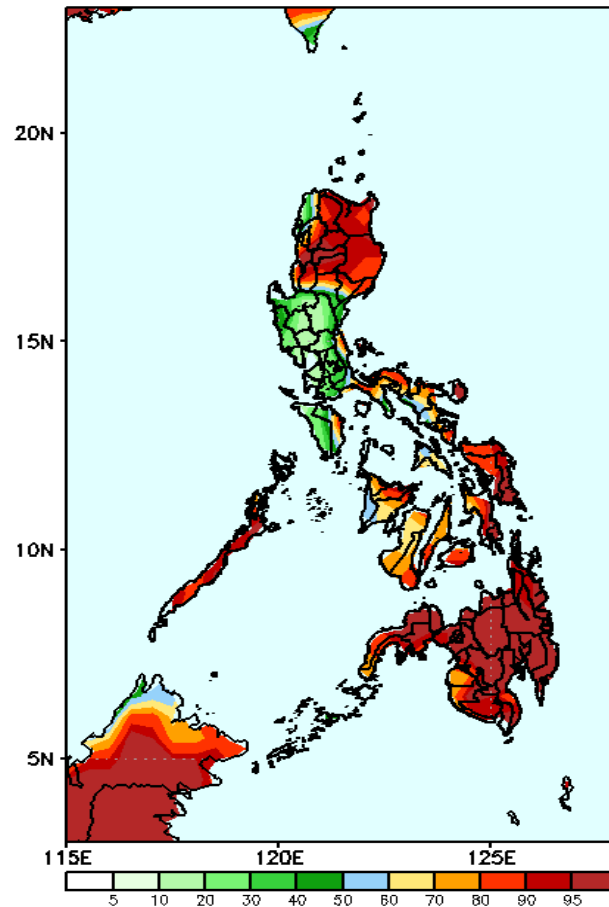
Week 1: Mar 25-31, 2022

GEFS Week-1 Precip Anomaly
Valid: 20220325 - 20220331



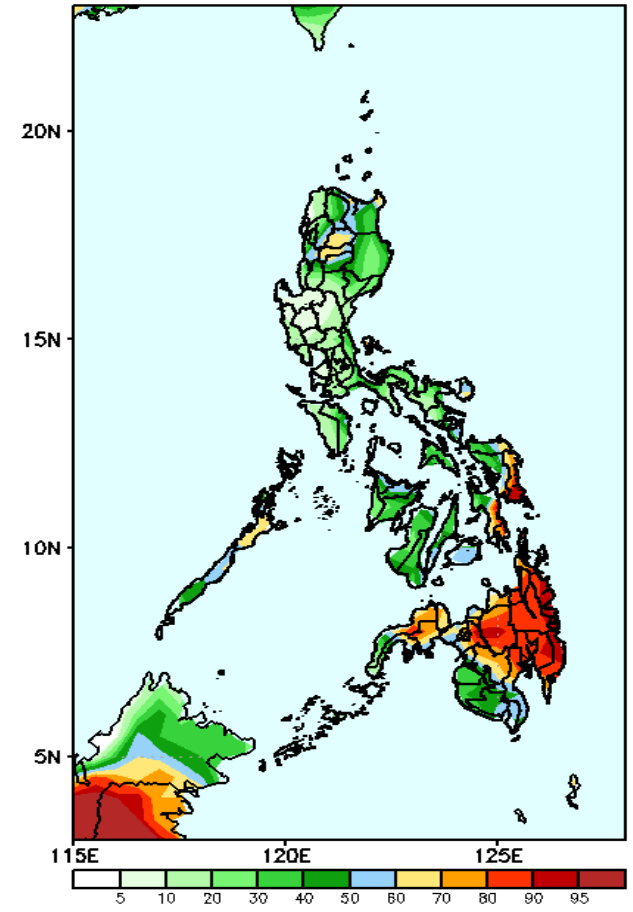
Rainfall deficit of 20-40mm is expected in most parts of the country except in CALABARZON, Southern Leyte, North Cotabato & Davao Region with 40-80mm increase of rainfall during the forecast period.

GEFS Week-1 Exceedance Prob. > 25mm
Valid: 20220325 - 20220331



High probability of rainfall to exceed 25mm in most parts of the country except in Central Luzon, Occ. Mindoro and parts of CALABARZON during the forecast period.

GEFS Week-1 Exceedance Prob. > 50mm
Valid: 20220325 - 20220331

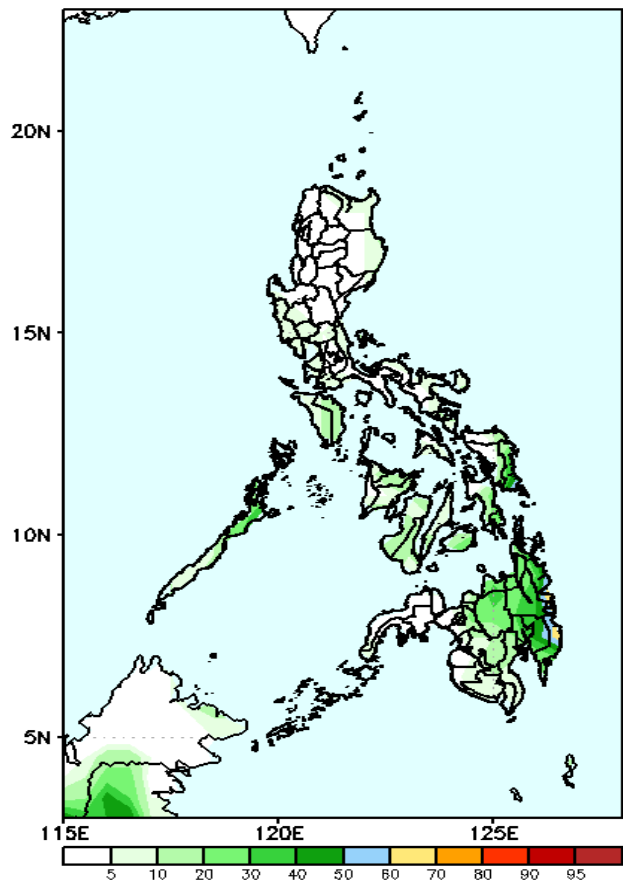


High probability of rainfall to exceed 50mm in Eastern Samar, Southern Leyte and most parts of Mindanao(except southwestern part) while less likely for the rest of the country during the forecast period.

Exceedance Probability > 100/150/200 mm

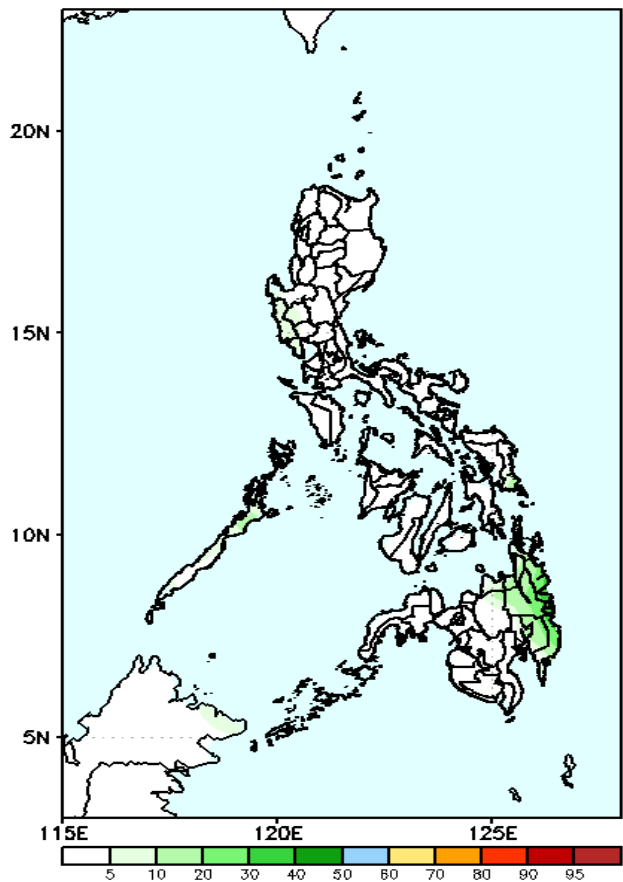
Week 1: Mar 25-31, 2022

GEFS Week-1 Exceedance Prob. > 100mm
Valid: 20220325 - 20220331



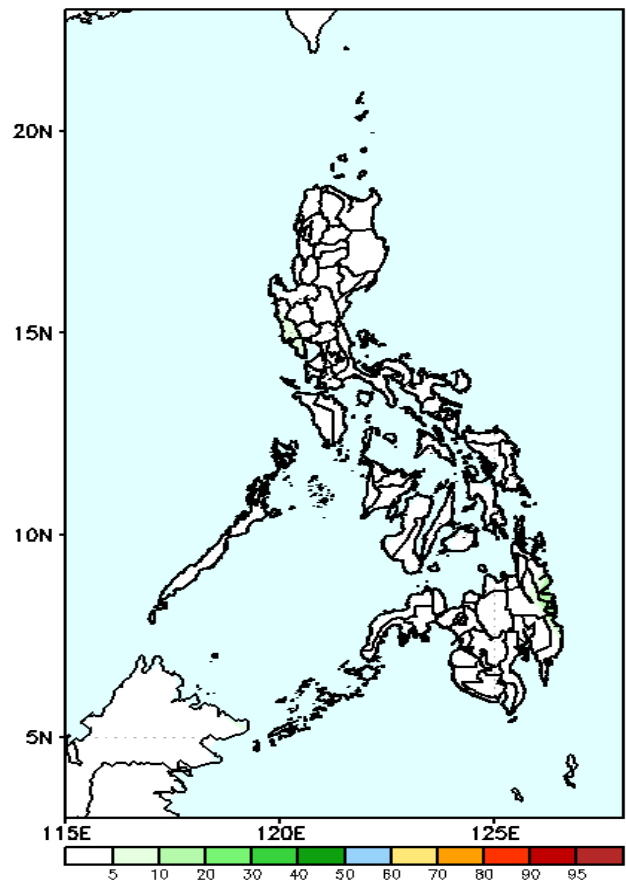
Low probability of rainfall to exceed 100mm in most parts of the country during the forecast period.

GEFS Week-1 Exceedance Prob. > 150mm
Valid: 20220325 - 20220331



Low probability of rainfall to exceed 150mm in most parts of the country during the forecast period.

GEFS Week-1 Exceedance Prob. > 200mm
Valid: 20220325 - 20220331



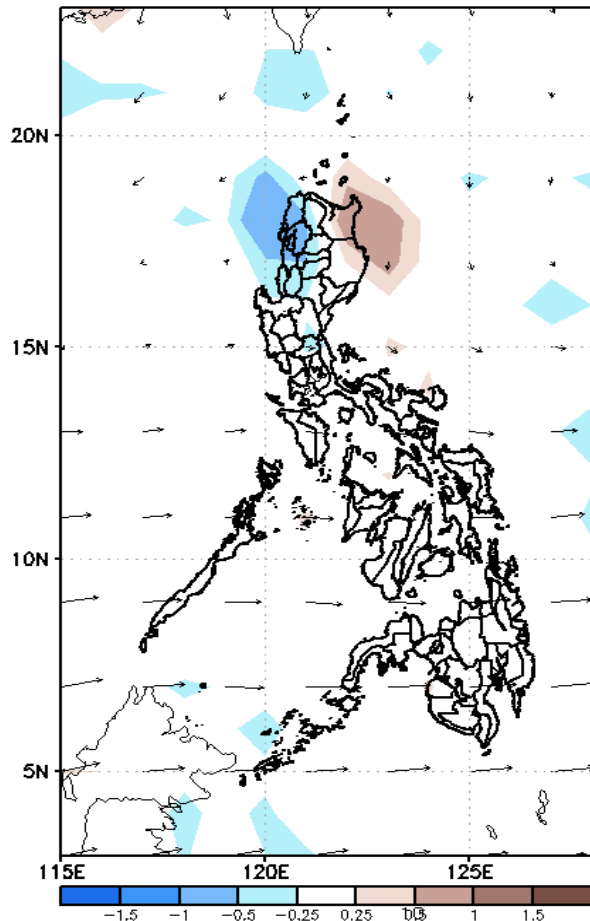
Low probability of rainfall to exceed 200mm in most parts of the country during the forecast period.



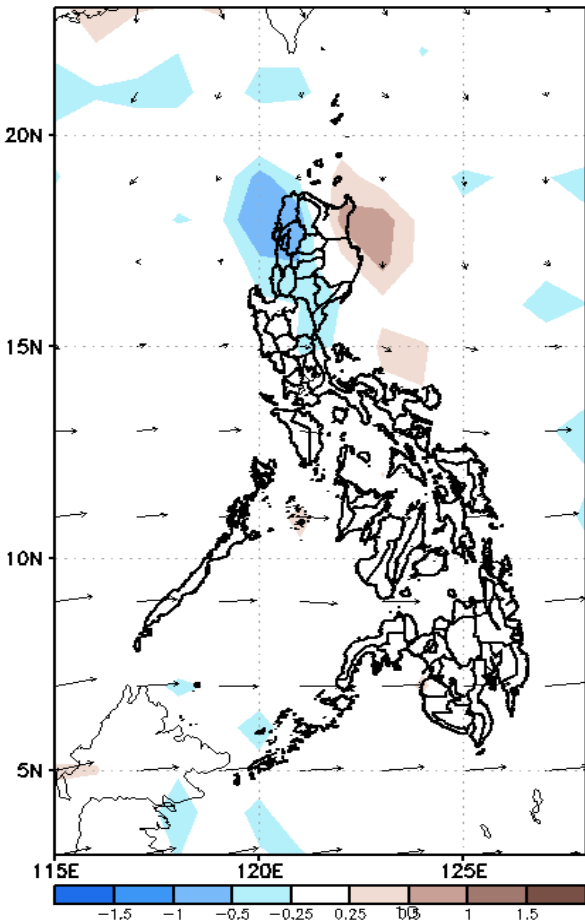
GEFS Week-2 Forecasts: Divergence & Wind Anomaly

Week 2: Apr 01-07, 2022

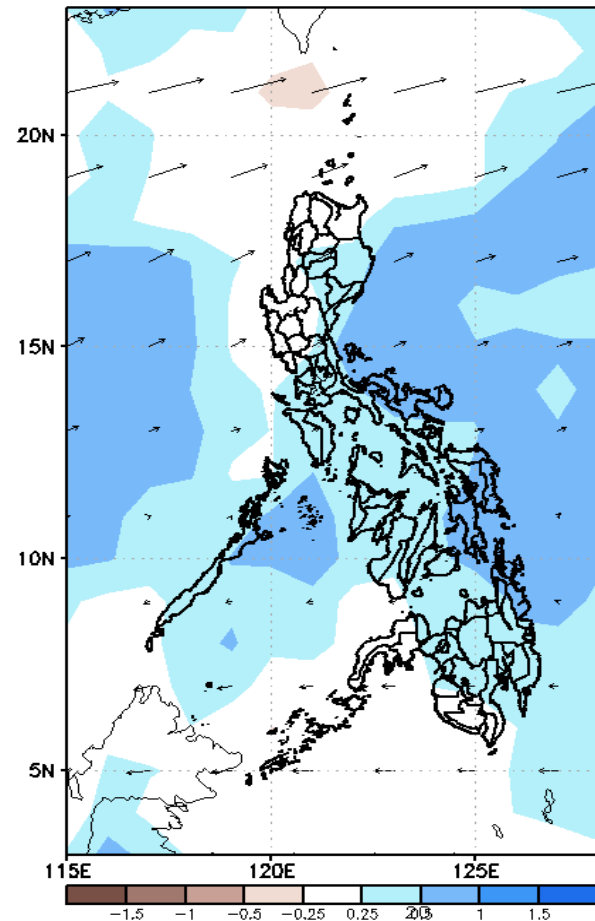
GEFS Week-2 850-hPa Divergence and Wind Anom
Valid: 20220401 - 20220407



GEFS Week-2 700-hPa Divergence and Wind Anom
Valid: 20220401 - 20220407



GEFS week-2 200-hPa Divergence and Wind Anomaly
Valid: 20220401 - 20220407

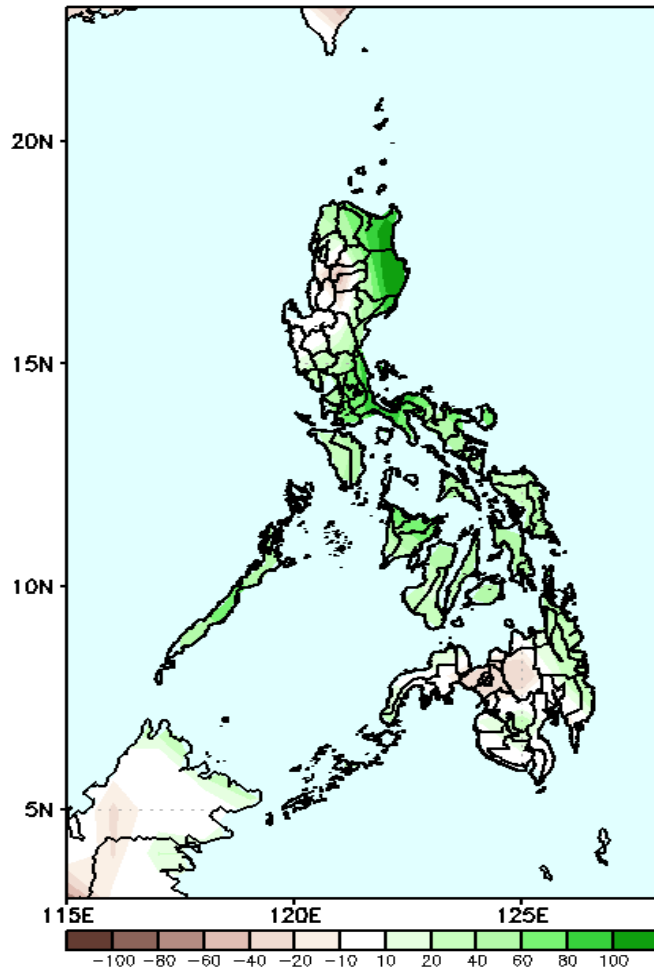


Upper and low level Divergence suggest a likelihood of light to moderate precipitation in some parts of Northern and Central Luzon and most parts of Southern Luzon, Visayas and Mindanao. Easterlies affecting most parts of the country attributing to warmer temperatures during the forecast period.

Precipitation Anomaly and Exceedance Probability > 25/50 mm

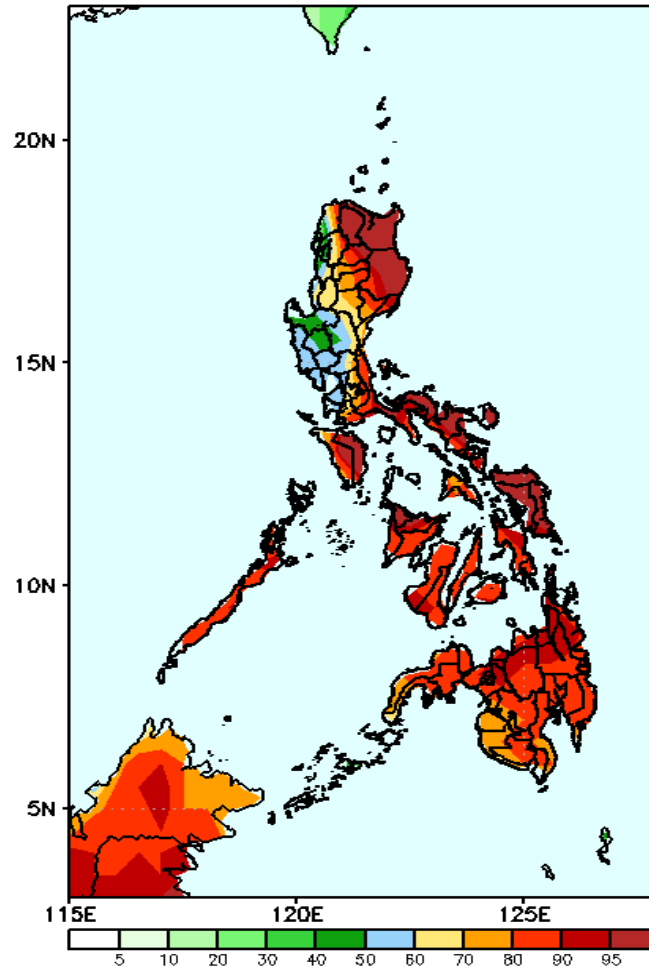
Week 2: Apr 01-07, 2022

GEFS Week-2 Precip Anomaly
Valid: 20220401 - 20220407



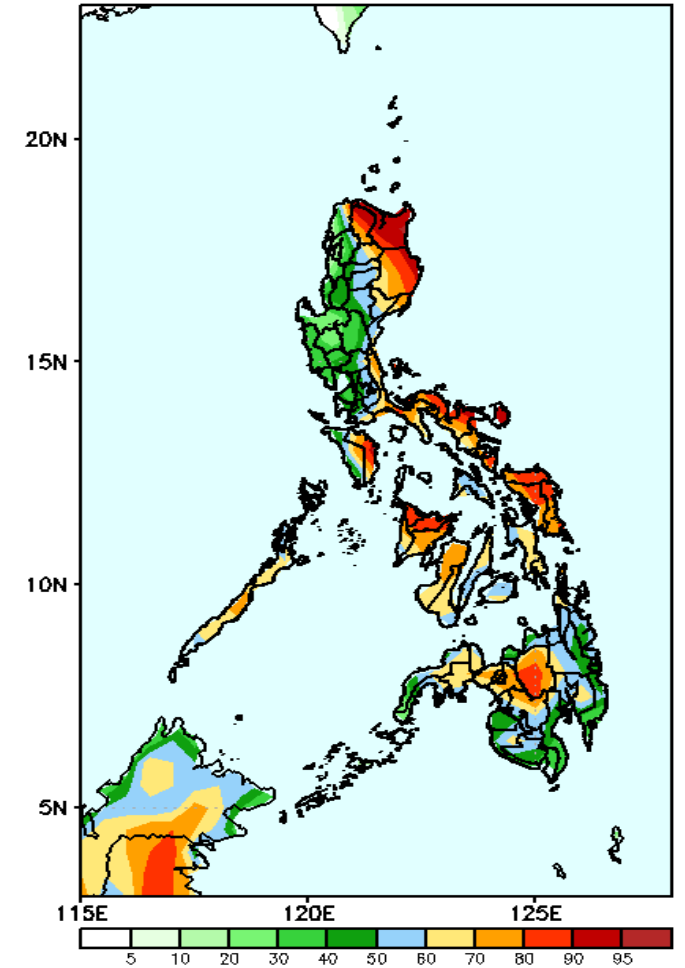
Increase of rainfall of 40-100mm in most parts of the country except in some areas in Ilocos Region & Cordillera Region and northern Mindanao during the forecast period.

GEFS Week-2 Exceedance Prob. > 25mm
Valid: 20220401 - 20220407



High probability of rainfall to exceed 25mm in most parts of the country except in some areas in Pangasinan and Central Luzon during the forecast period.

GEFS Week-2 Exceedance Prob. > 50mm
Valid: 20220401 - 20220407

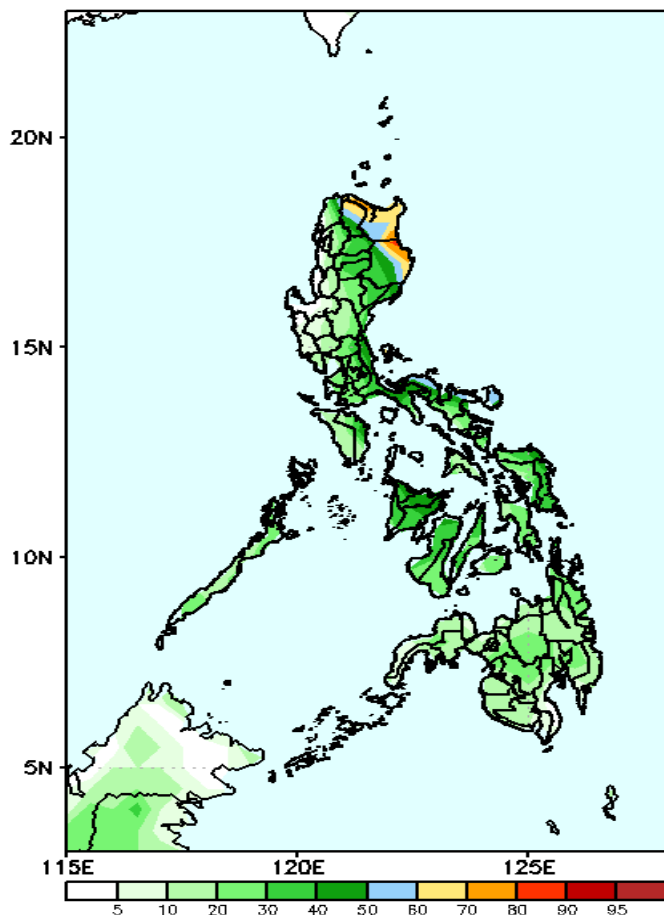


High probability of rainfall to exceed 50mm in northern & eastern parts of Luzon, Palawan, Mindoro and most parts of Visayas & Northern Mindanao during the forecast period

Exceedance Probability > 100/150/200 mm

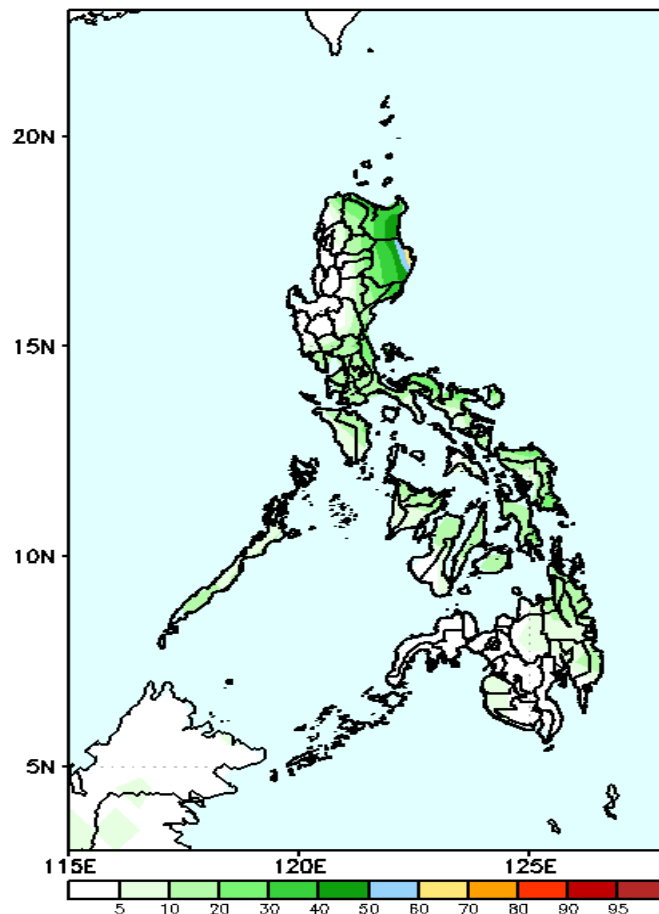
Week 2: Apr 01-07, 2022

GEFS Week-2 Exceedance Prob. > 100mm
Valid: 20220401 – 20220407



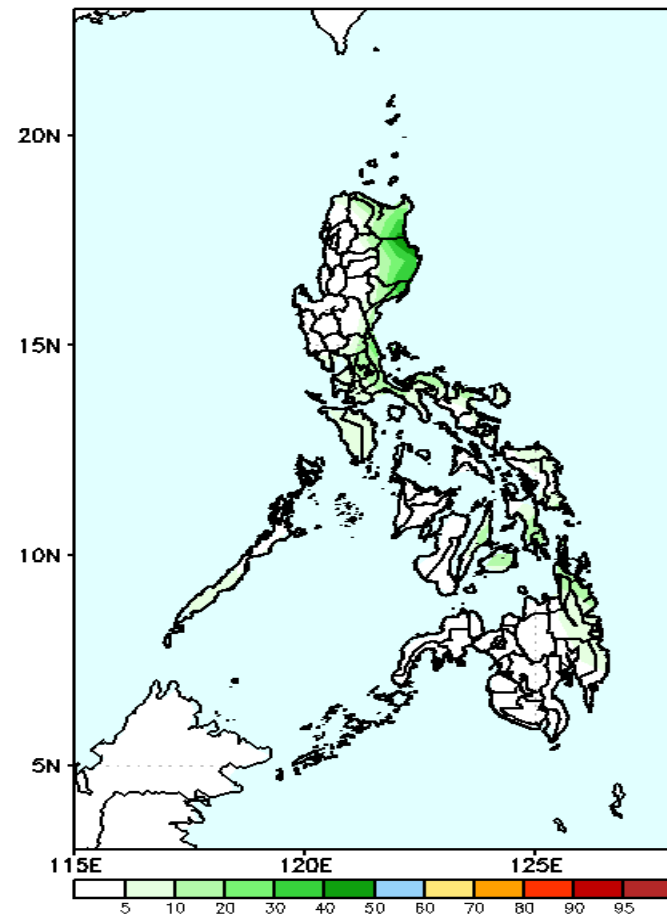
60-80% probability of rainfall to exceed 100mm in Apayao, Cagayan and Isabela while less likely for the rest of the country during the forecast period.

GEFS Week-2 Exceedance Prob. > 150mm
Valid: 20220401 – 20220407



Low probability of rainfall to exceed 150mm in most parts of the country during the forecast period.

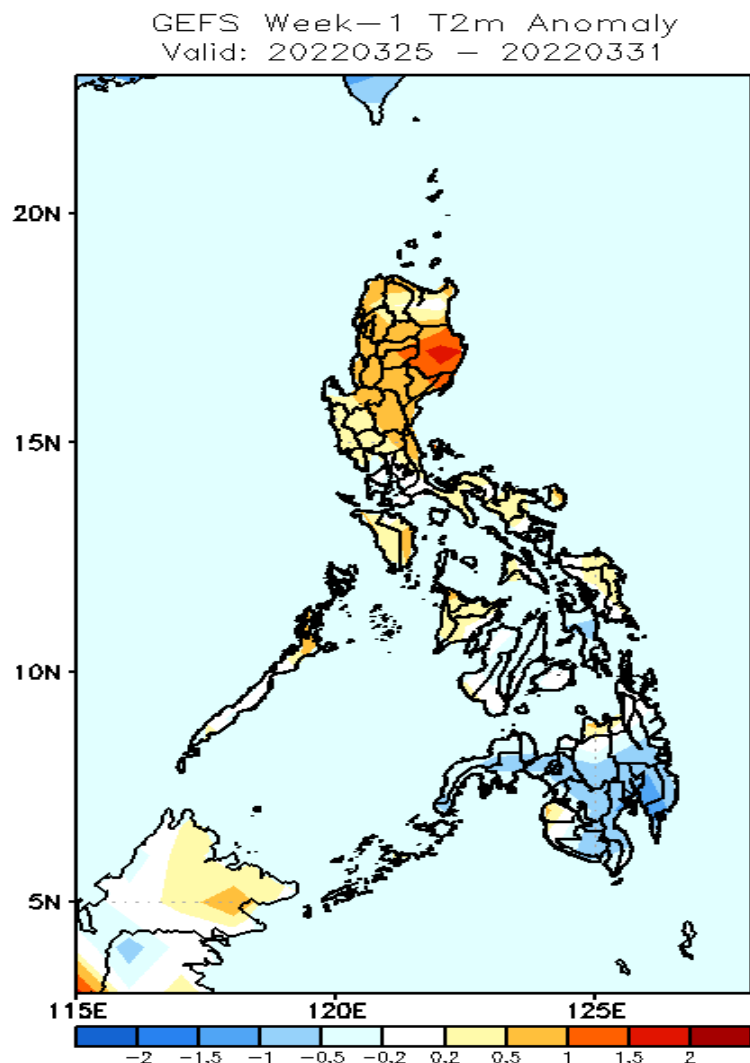
GEFS Week-2 Exceedance Prob. > 200mm
Valid: 20220401 – 20220407



Low probability of rainfall to exceed 200mm in most parts of the country during the forecast period.

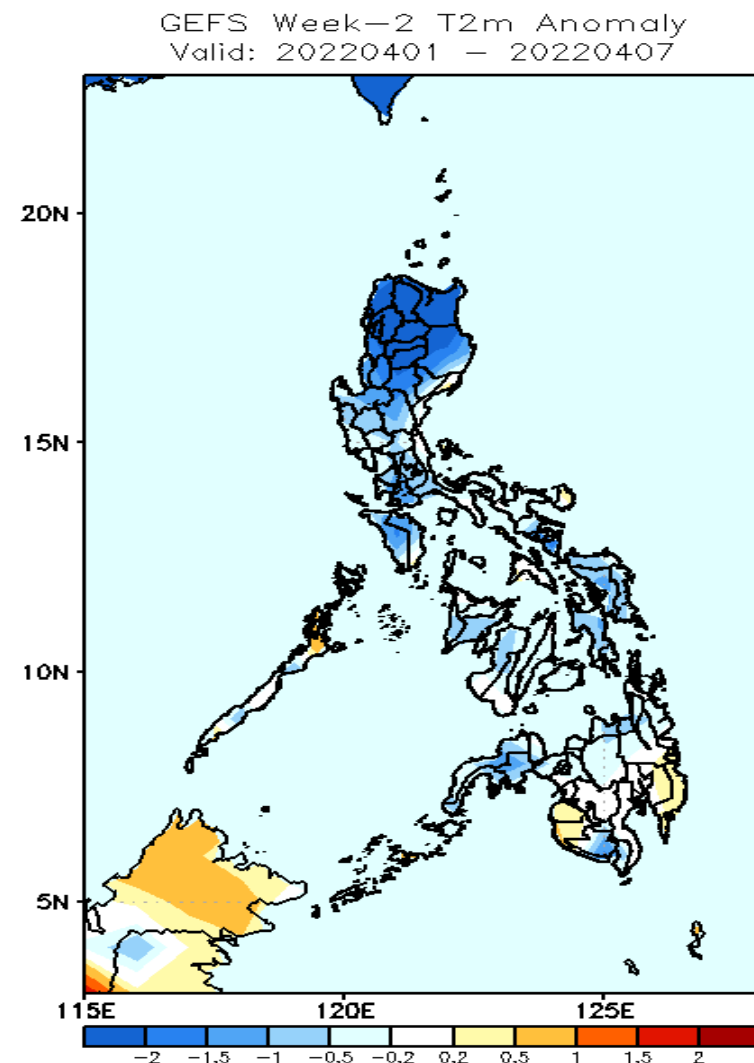


GEFS Week-1 & 2 Forecasts: T2m Anomaly



2m Temperature Week 1: Mar 25-31, 2022

Warmer than average surface air temperature will likely experience in Isabela and slightly warmer temperature in most parts Luzon & Visayas while slightly cooler to cooler temperature in Mindanao during the forecast period



2m Temperature Week 2: Apr 01-07, 2022

Cooler than average surface air temperature will likely experience in most parts of Luzon while average to slightly cooler temperature in Mindanao during the forecast period.