



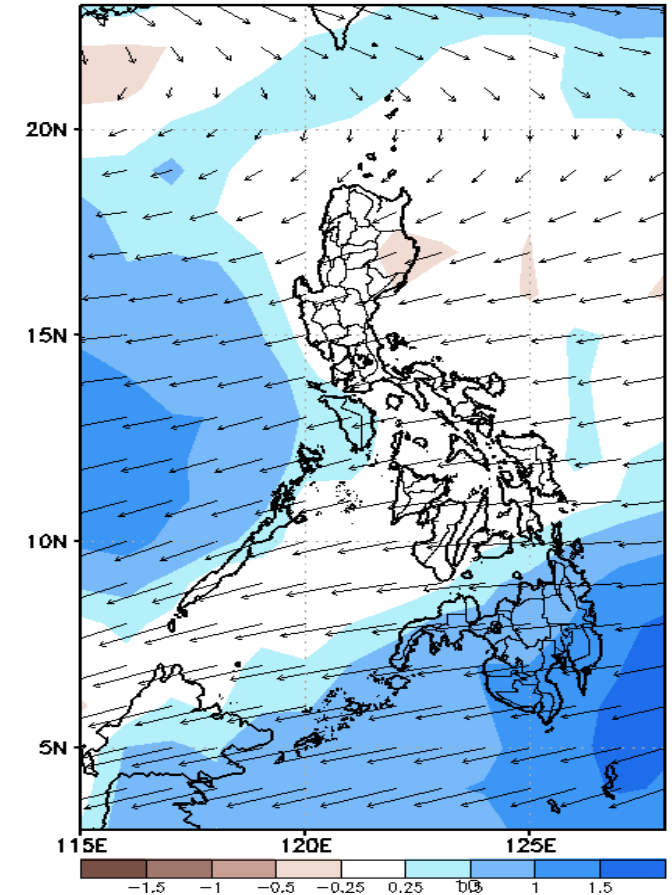
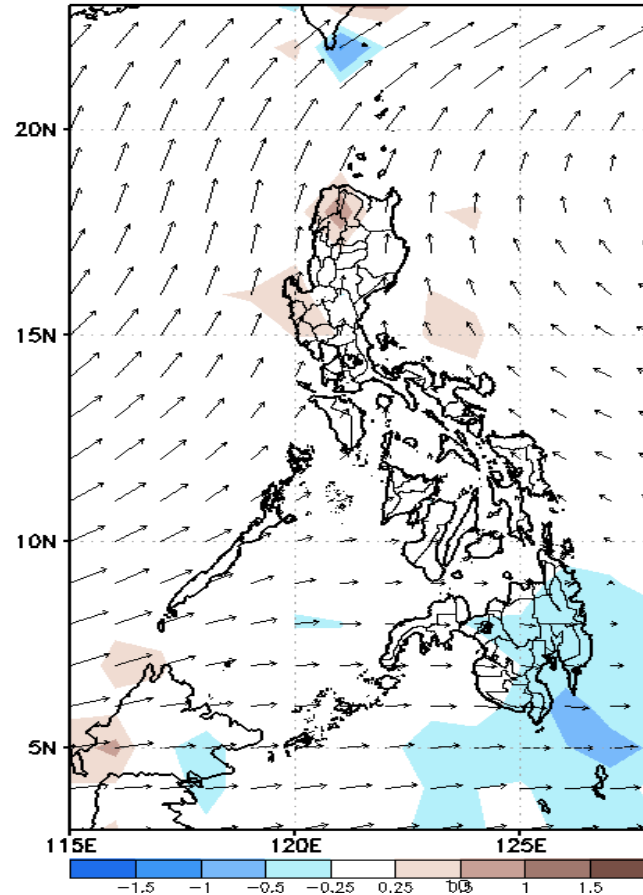
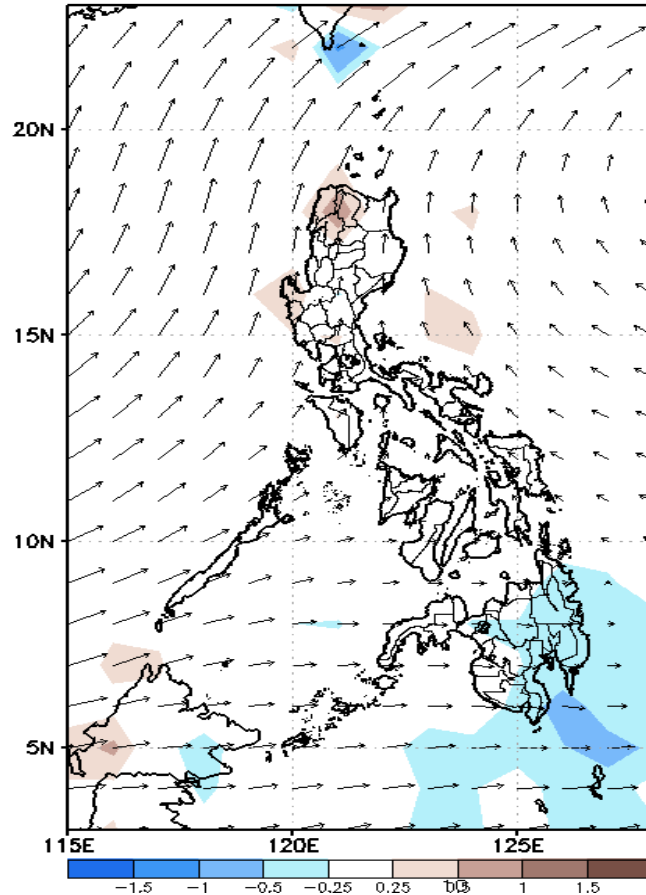
Week 1 & Week 2 Forecast for the Philippines using GEFS Model



GEFS Week-1 Forecasts: Wind Anomaly Forecast

Week 1: May 25-31, 2022

GEFS Week-1 850-hPa Divergence and Wind Anom
Valid: 20220525 - 20220531

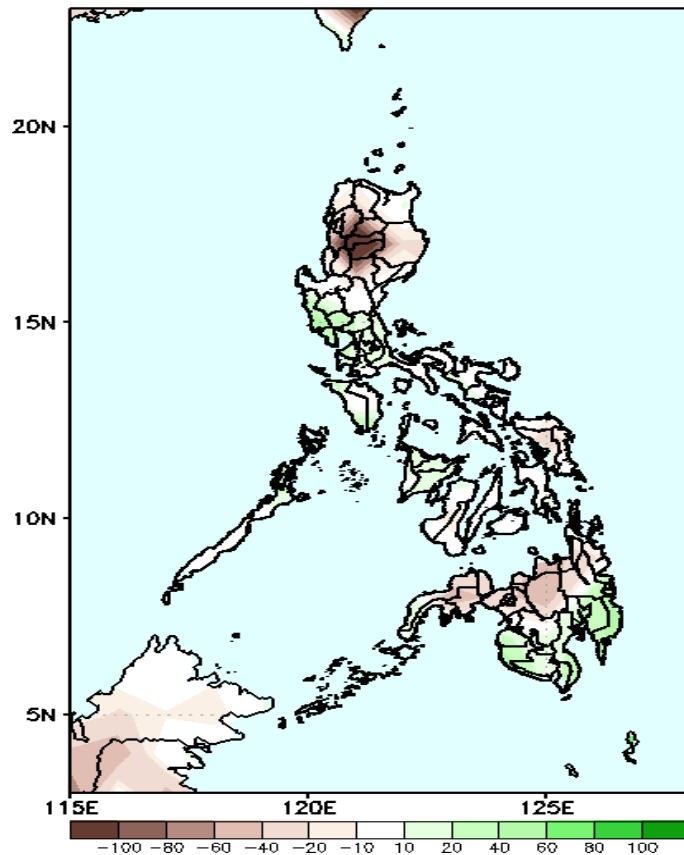


Southwest Monsoon is forecasted to affect most parts of Western Luzon and Western Visayas while Easterlies affecting the Eastern sections of the country during the forecast period

Precipitation Anomaly and Exceedance Probability > 25/50 mm

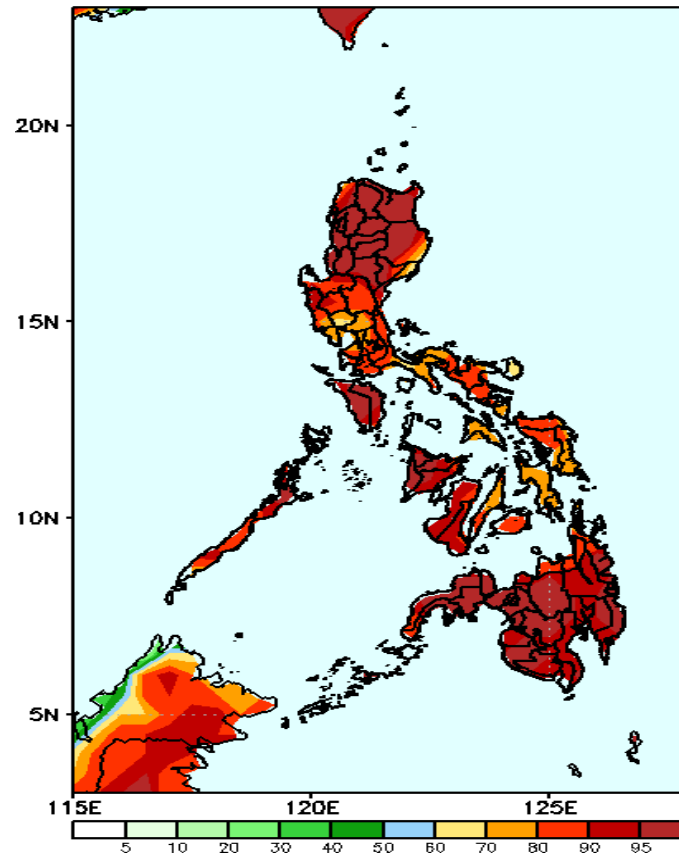
Week 1: May 25-31, 2022

GEFS Week-1 Precip Anomaly
Valid: 20220525 - 20220531



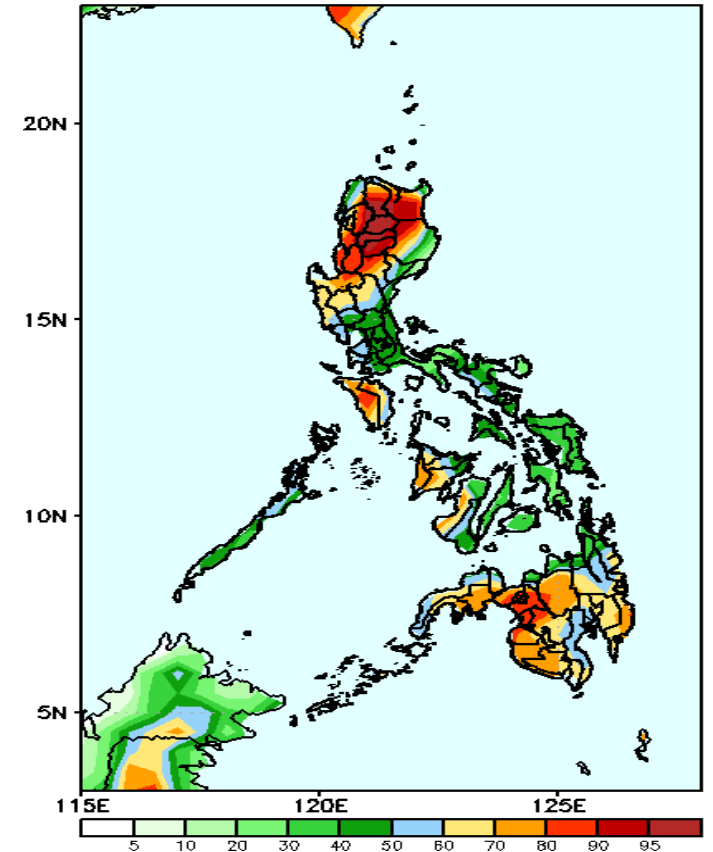
Rainfall deficit of more than 100mm is expected in Cordillera Region and 20-80mm in Samar Provinces and Northern Mindanao during the forecast period.

GEFS Week-1 Exceedance Prob. > 25mm
Valid: 20220525 - 20220531



High probability of rainfall to exceed 25mm in most parts of the country during the forecast period.

GEFS Week-1 Exceedance Prob. > 50mm
Valid: 20220525 - 20220531

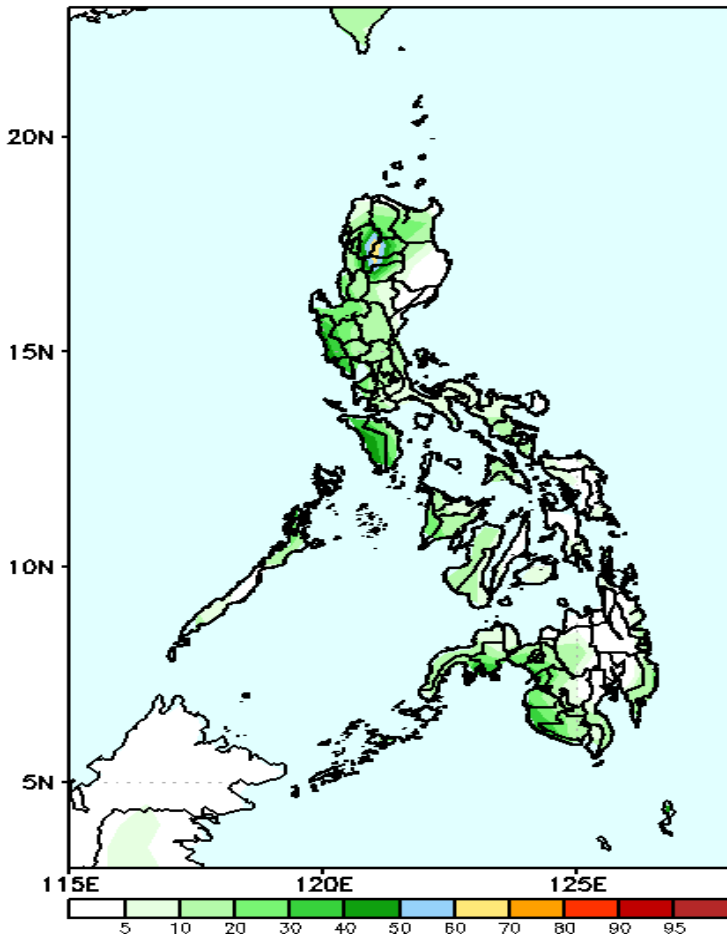


High probability of rainfall to exceed 50mm in most parts of Northern and Central Luzon, Mindoro provinces, Western Visayas and most parts of Mindanao while less likely for the rest of the country during the forecast period.

Exceedance Probability > 100/150/200 mm

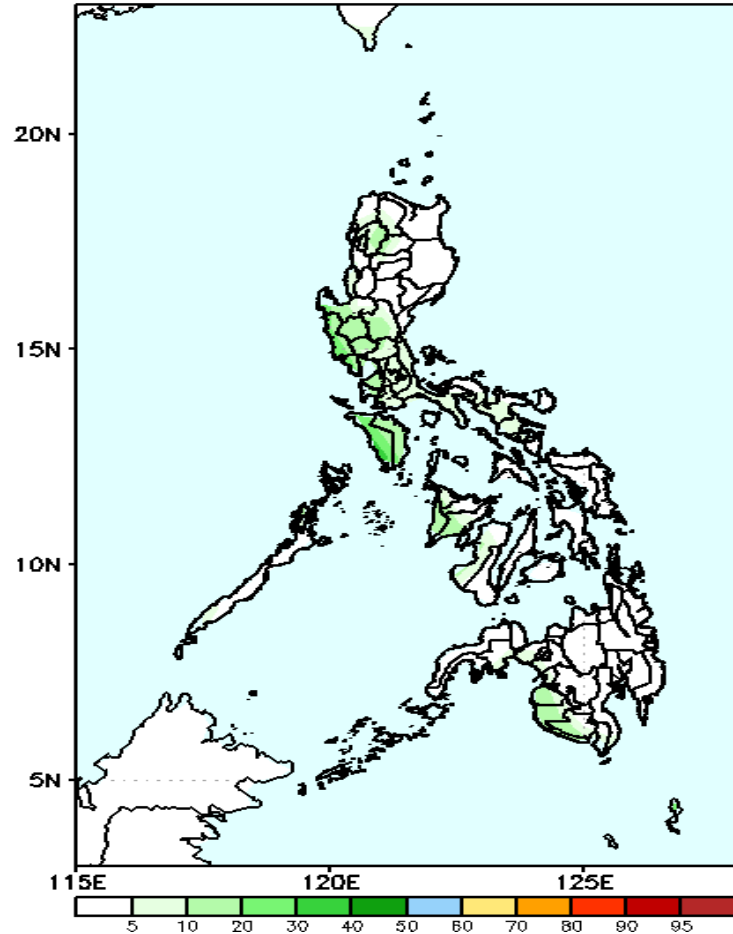
Week 1: May 25-31, 2022

GEFS Week-1 Exceedance Prob. > 100mm
Valid: 20220525 - 20220531



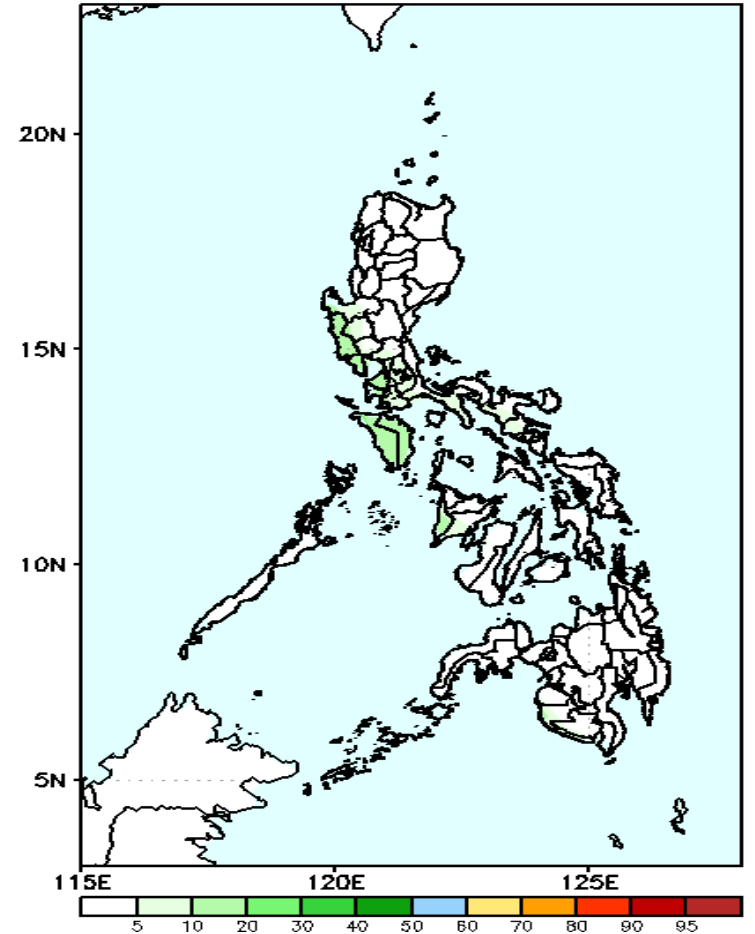
Low probability of rainfall to exceed 100mm in most parts of the country during the forecast period.

GEFS Week-1 Exceedance Prob. > 150mm
Valid: 20220525 - 20220531



Low probability of rainfall to exceed 150mm in most parts of the country during the forecast period.

GEFS Week-1 Exceedance Prob. > 200mm
Valid: 20220525 - 20220531



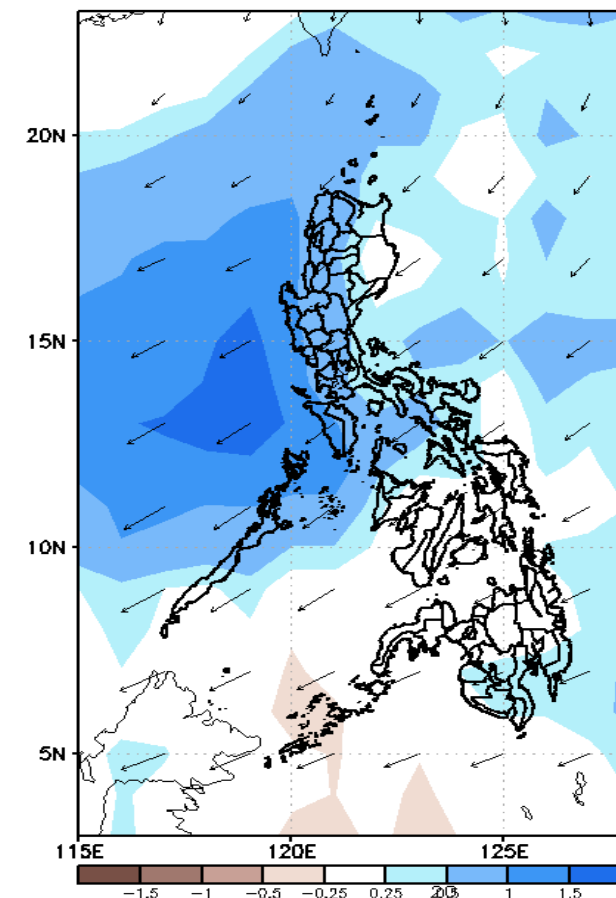
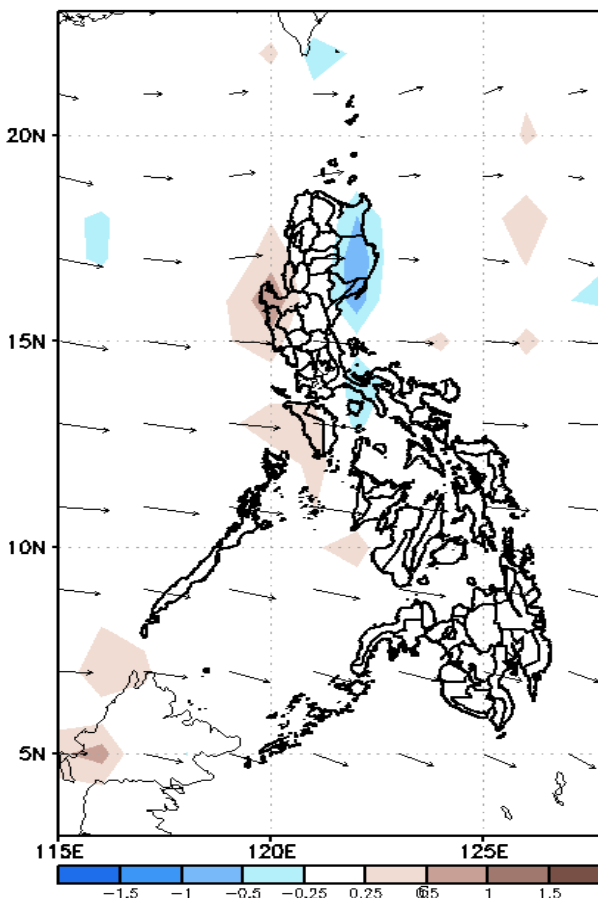
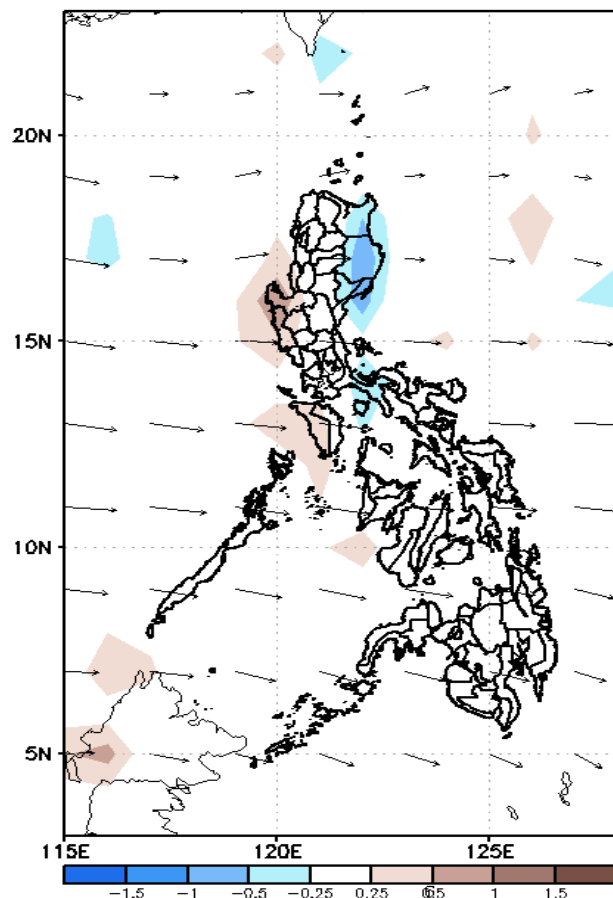
Low probability of rainfall to exceed 200mm in most parts of the country during the forecast period.



GEFS Week-2 Forecasts: Wind Anomaly Forecast

Week 2: Jun 01-07, 2022

GEFS Week-2 850-hPa Divergence and Wind Anom
Valid: 20220601 - 20220607



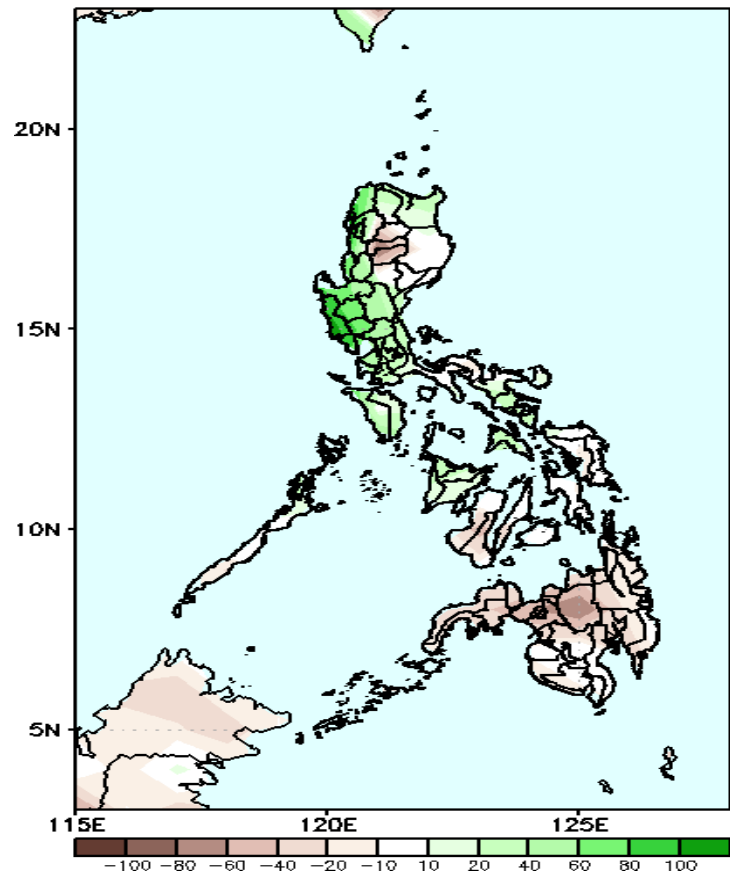
Southwest Monsoon is forecasted to affect most parts of Luzon and Western Visayas while Easterlies affecting the rest of the country during the forecast period



Precipitation Anomaly and Exceedance Probability > 25/50 mm

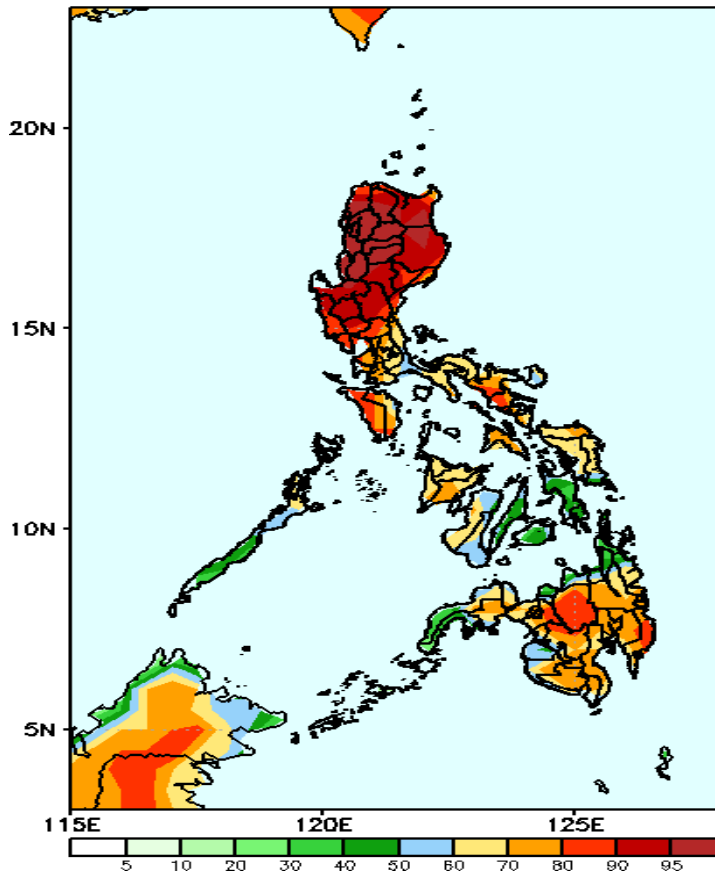
Week 2: Jun 01-07, 2022

GEFS Week-2 Precip Anomaly
Valid: 20220601 - 20220607



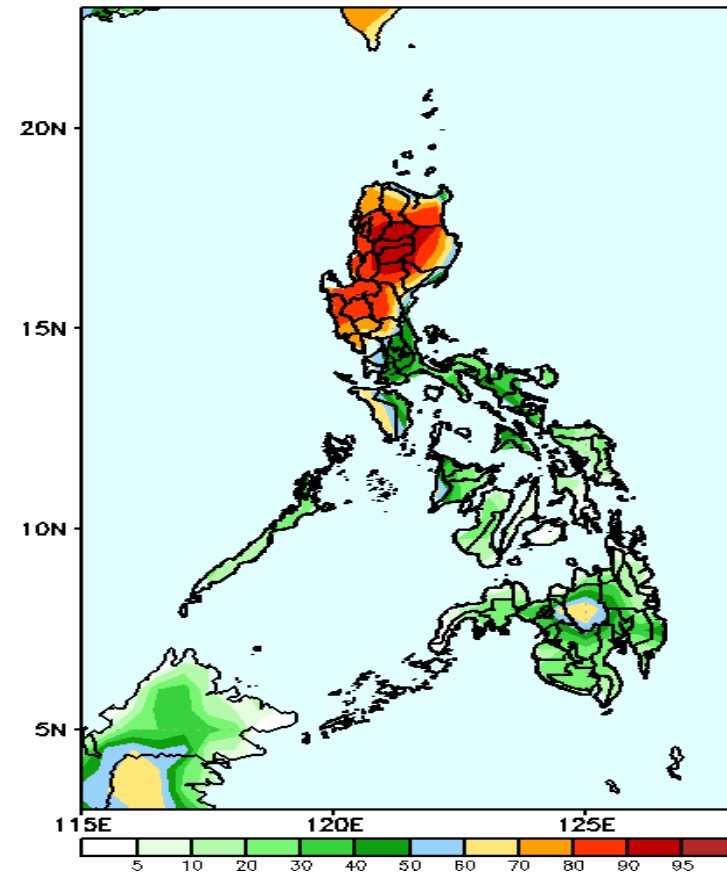
Increase of rainfall of more than 40-100mm in most parts of Luzon (except Isabela) while rainfall deficit of 40-80mm in Cordillera Region and most parts of Visayas and Mindanao during the forecast period.

GEFS Week-2 Exceedance Prob. > 25mm
Valid: 20220601 - 20220607



High probability of rainfall to exceed 25mm in most parts of the country except Palawan, Leyte provinces and Central Visayas during the forecast period.

GEFS Week-2 Exceedance Prob. > 50mm
Valid: 20220601 - 20220607

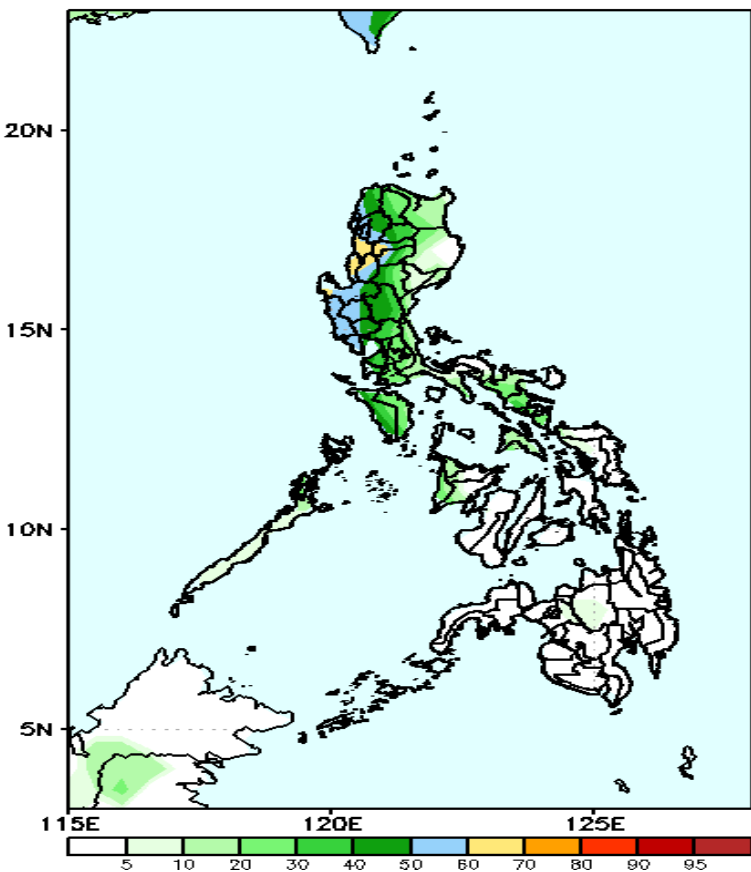


High probability of rainfall to exceed 50mm in most parts of Northern and Central Luzon and Mindoro Occidental while less likely for the rest of the county during the forecast period.

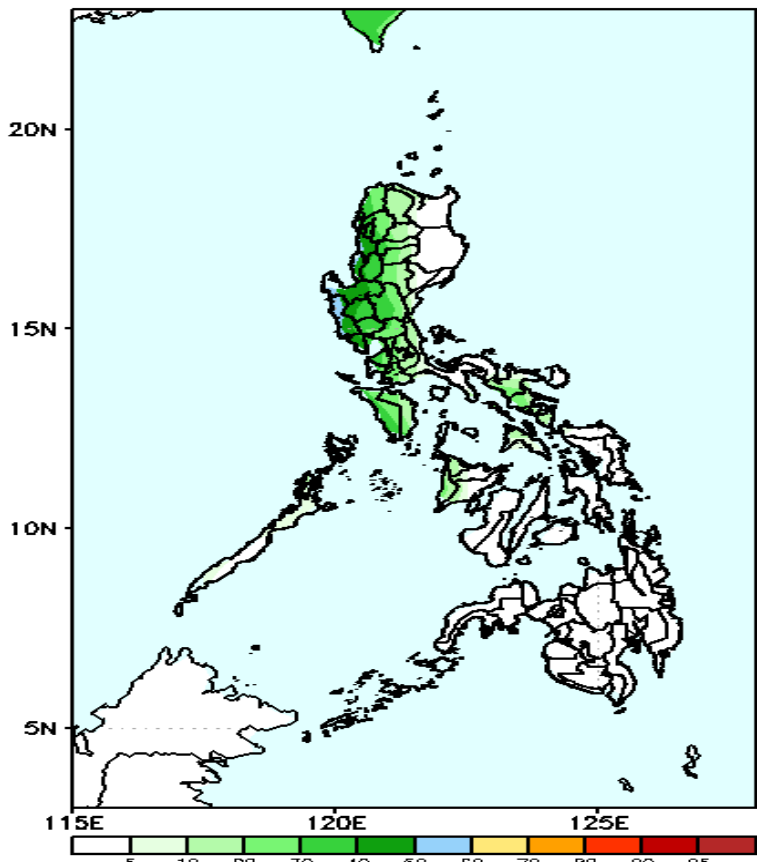
Exceedance Probability > 100/150/200 mm

Week 2: Jun 01-07, 2022

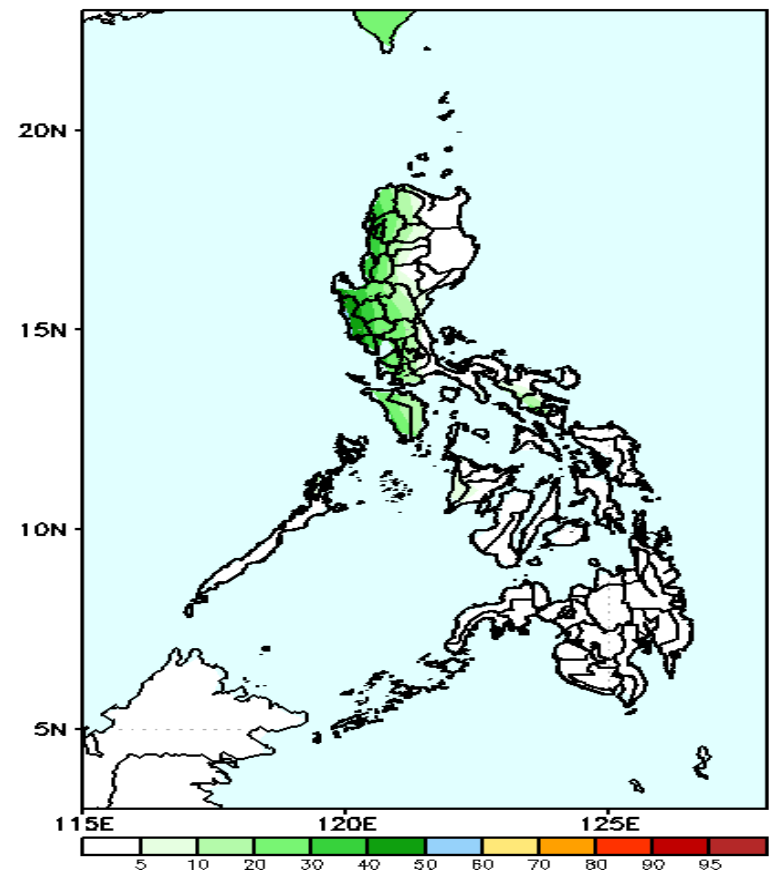
GEFS Week-2 Exceedance Prob. > 100mm
Valid: 20220601 – 20220607



GEFS Week-2 Exceedance Prob. > 150mm
Valid: 20220601 – 20220607



GEFS Week-2 Exceedance Prob. > 200mm
Valid: 20220601 – 20220607



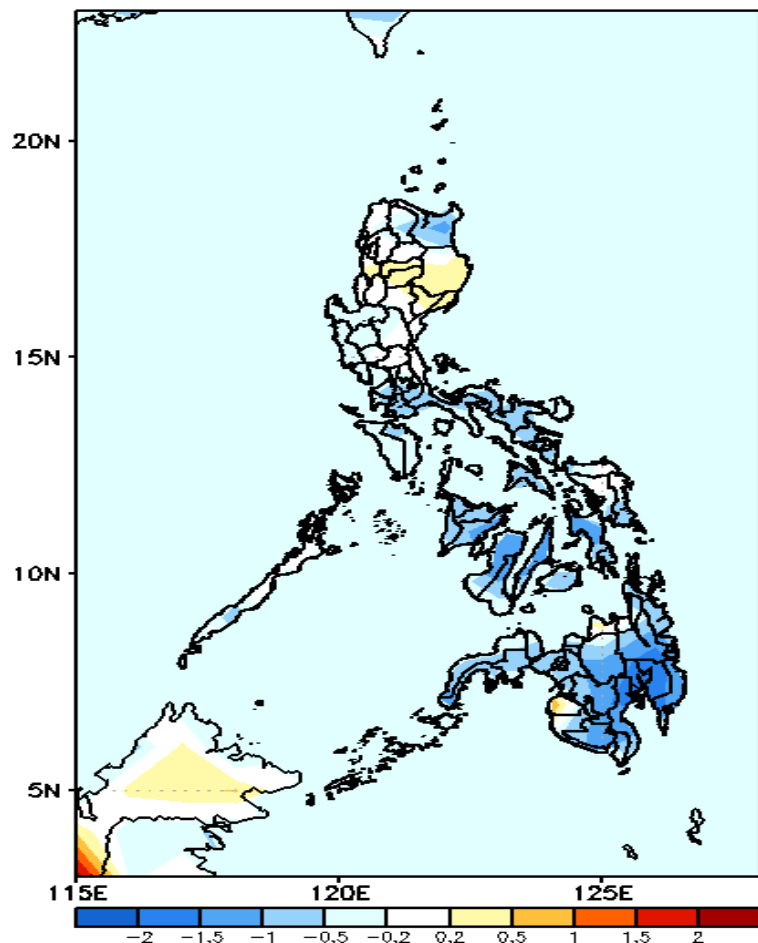
Low probability of rainfall to exceed 100mm in most parts of the county except some parts of Western Luzon during the forecast period.

Low probability of rainfall to exceed 150mm in most parts of the country during the forecast period.

Low probability of rainfall to exceed 200mm in most parts of the country during the forecast period.

GEFS Week-1 & 2 Forecasts: T2m Anomaly

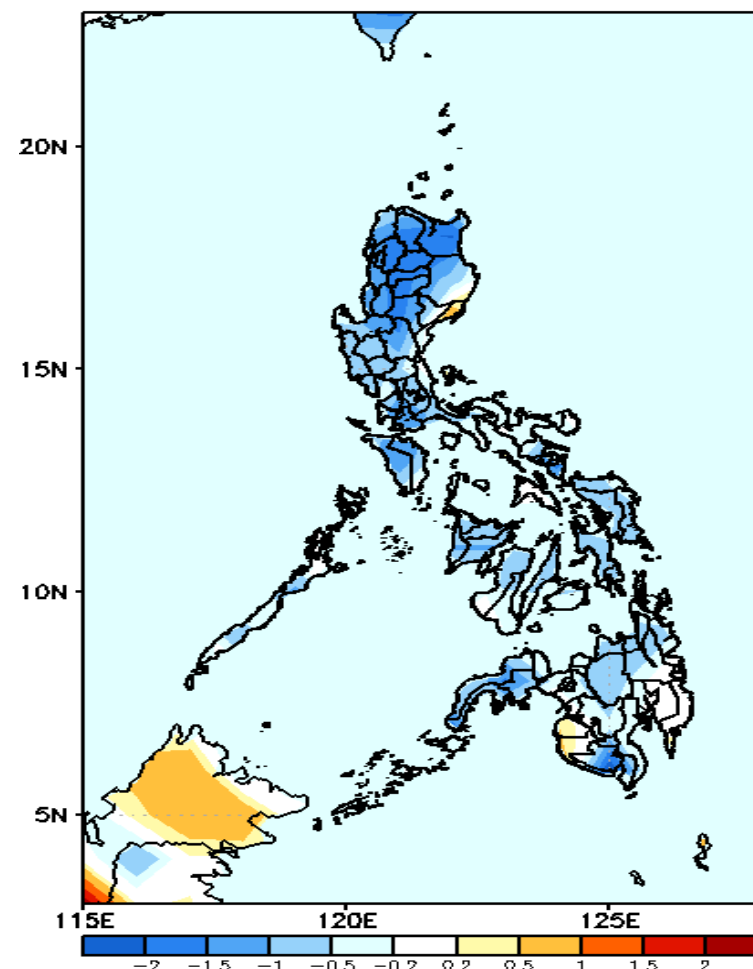
GEFS Week-1 T2m Anomaly
Valid: 20220525 – 20220531



2m Temperature Week 1: May 25-31, 2022

Cooler than average surface air temperature will likely experience in most parts of Visayas and Mindanao while average to slightly warmer temperature in Luzon (except Cagayan) during the forecast period.

GEFS Week-2 T2m Anomaly
Valid: 20220601 – 20220607



2m Temperature Week 2: Jun 01-07, 2022

Cooler than average surface air temperature will likely experience in most parts of the country except Davao Region, Maguindanao and Sultan Kudarat during the forecast period.