



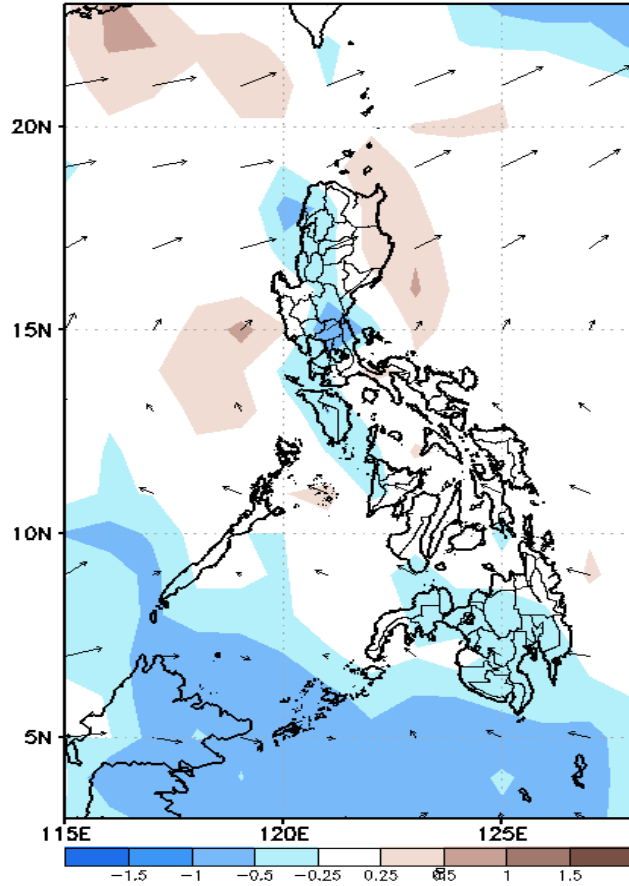
# Week 1 & Week 2 Forecast for the Philippines using GEFS Model



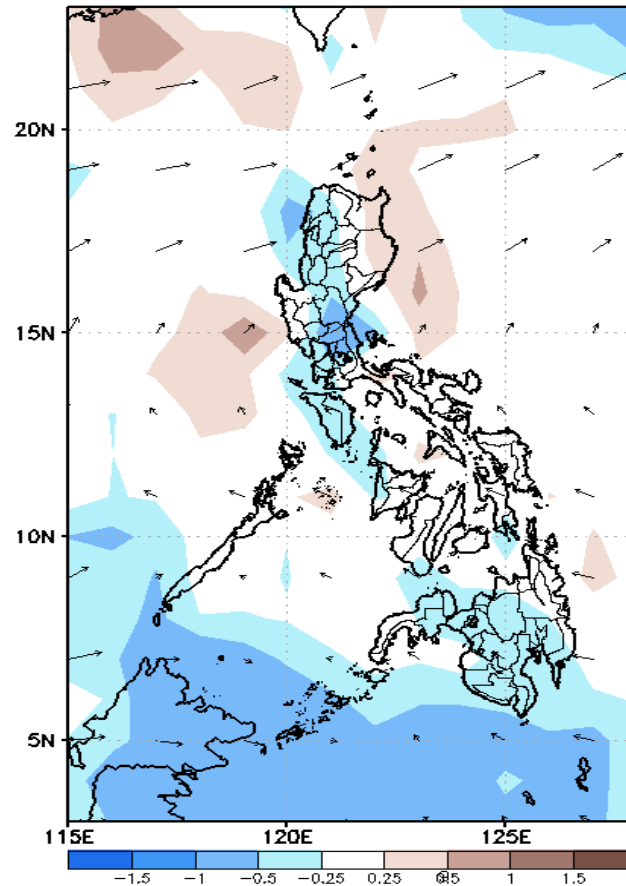
# GEFS Week-1 Forecasts: Divergence & Wind Anomaly

Week 1: Nov 22-28, 2021

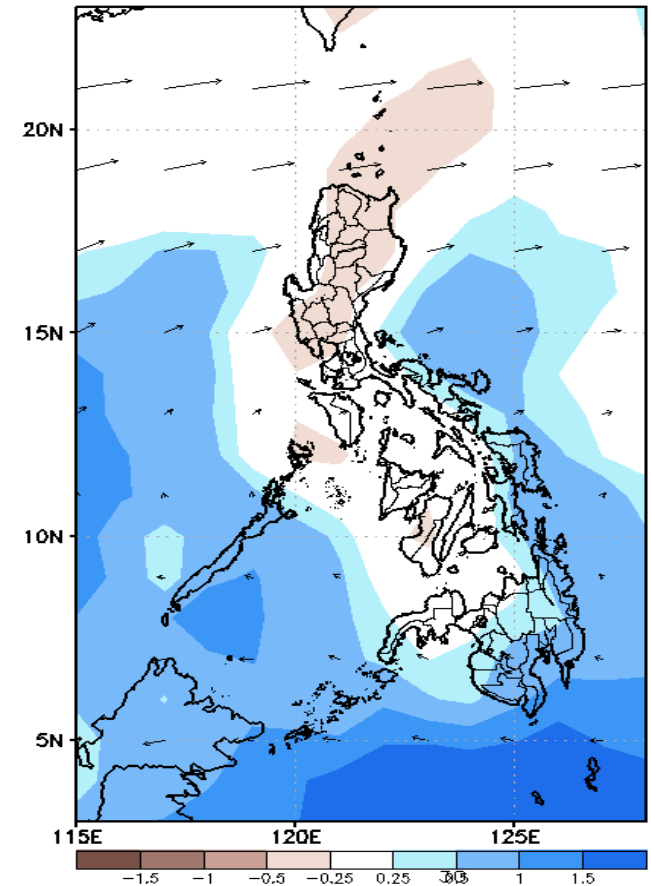
GEFS Week-1 850-hPa Divergence and Wind Anomx  
Valid: 20211125 - 20211201



GEFS Week-1 700-hPa Divergence and Wind Anomx  
Valid: 20211125 - 20211201



GEFS Week-1 200-hPa Divergence and Wind Anomx  
Valid: 20211125 - 20211201

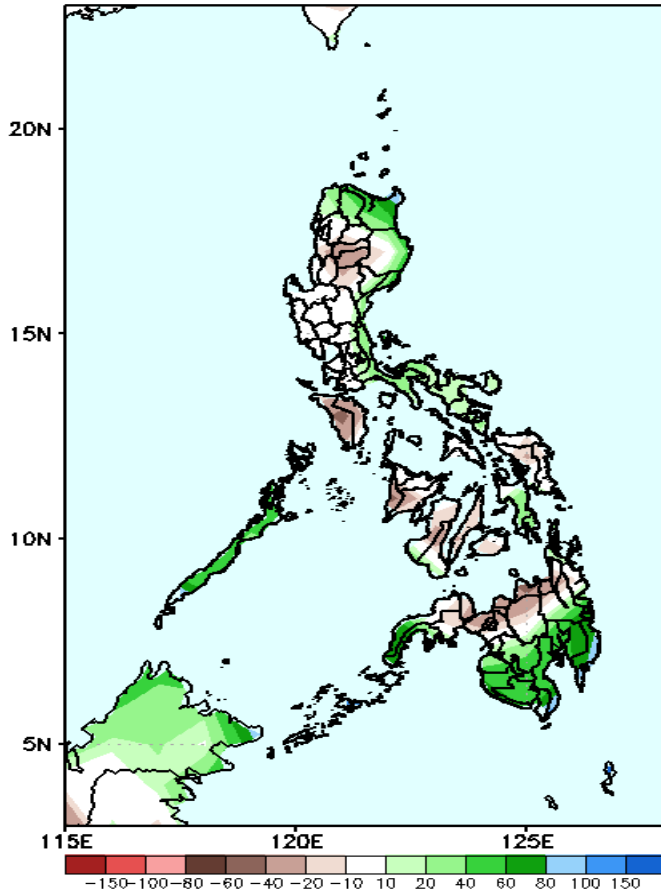


Upper and low level Divergence suggest likelihood of light to moderate precipitation in Bicol region, Eastern Visayas and most parts of Mindanao. Northeast Monsoon affecting the eastern sections of Luzon while Easterlies affecting the rest of the country during the forecast period.

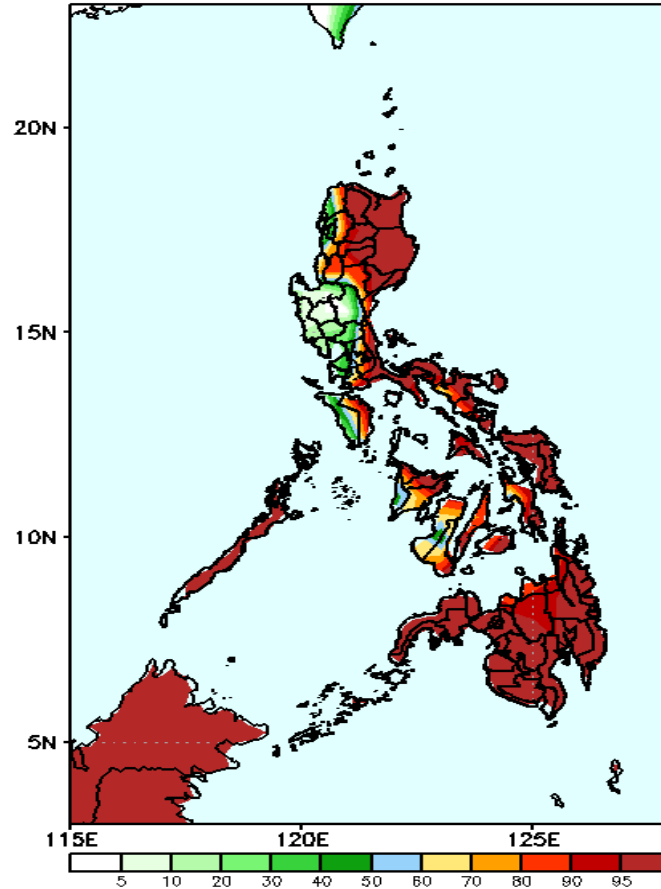
# Precipitation Anomaly and Exceedance Probability > 25/50 mm

## Week 1: Nov 25-Dec 01, 2021

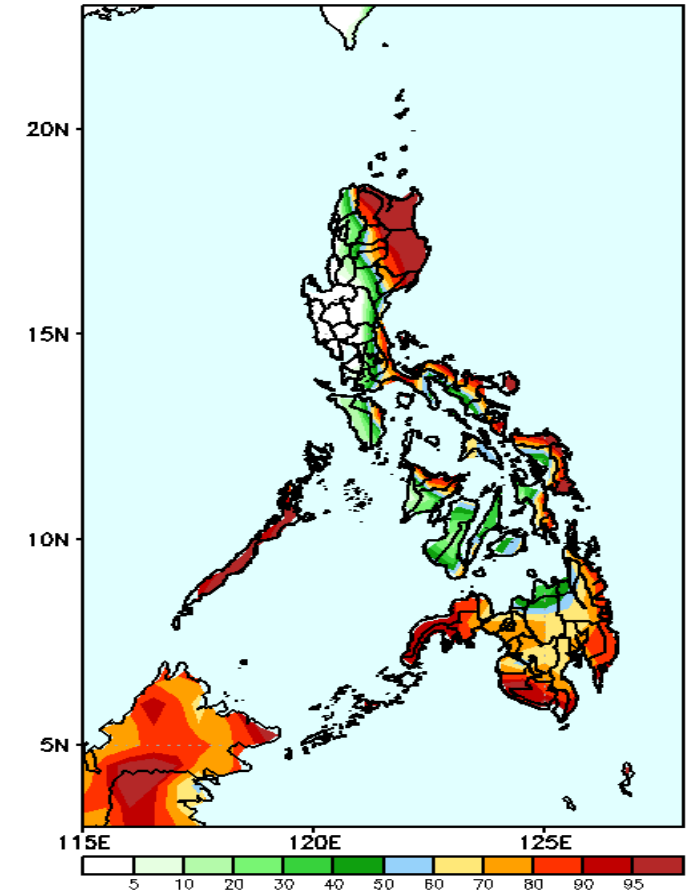
GEFS Week-1 Precip Anomaly  
Valid: 20211125 - 20211201



GEFS Week-1 Exceedance Prob. > 25mm  
Valid: 20211125 - 20211201



GEFS Week-1 Exceedance Prob. > 50mm  
Valid: 20211125 - 20211201



Increase of rainfall of 40-80mm in most parts of northern and eastern Luzon, Palawan, Zamboanga and southern Mindanao while rainfall deficit of 20-50mm for the rest of the country during the forecast period.

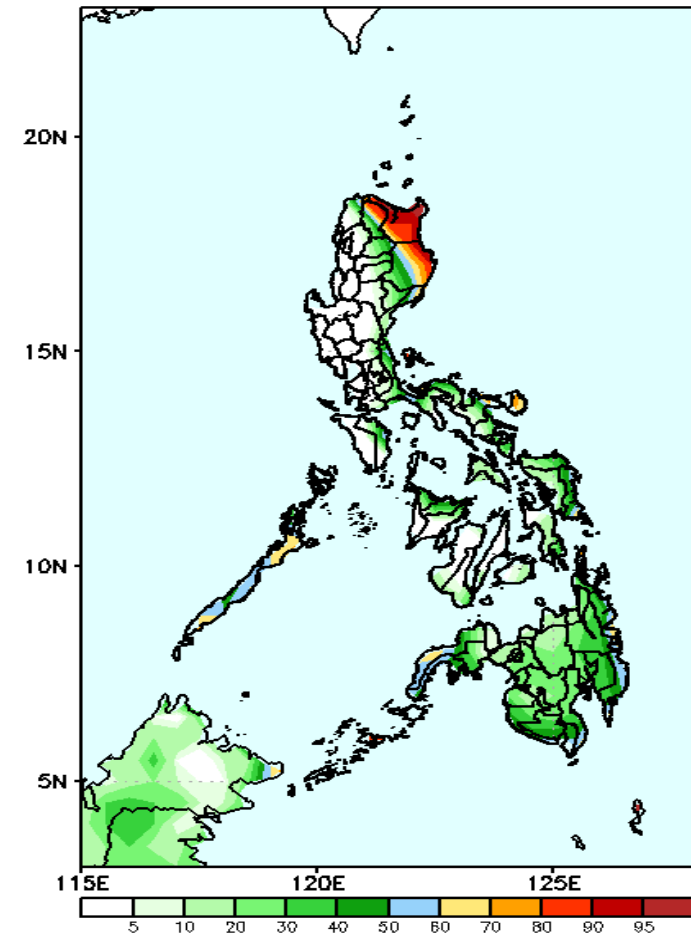
High probability of rainfall to exceed 25mm in most parts of the country except in Pangasinan and most parts of Central Luzon and Occidental Mindoro during the forecast period.

High probability of rainfall to exceed 50mm in the eastern parts of Luzon and Visayas (including Cagayan Valley) and most parts of Mindanao while less likely for the rest of the country during the forecast period.

# Exceedance Probability > 100/150/200 mm

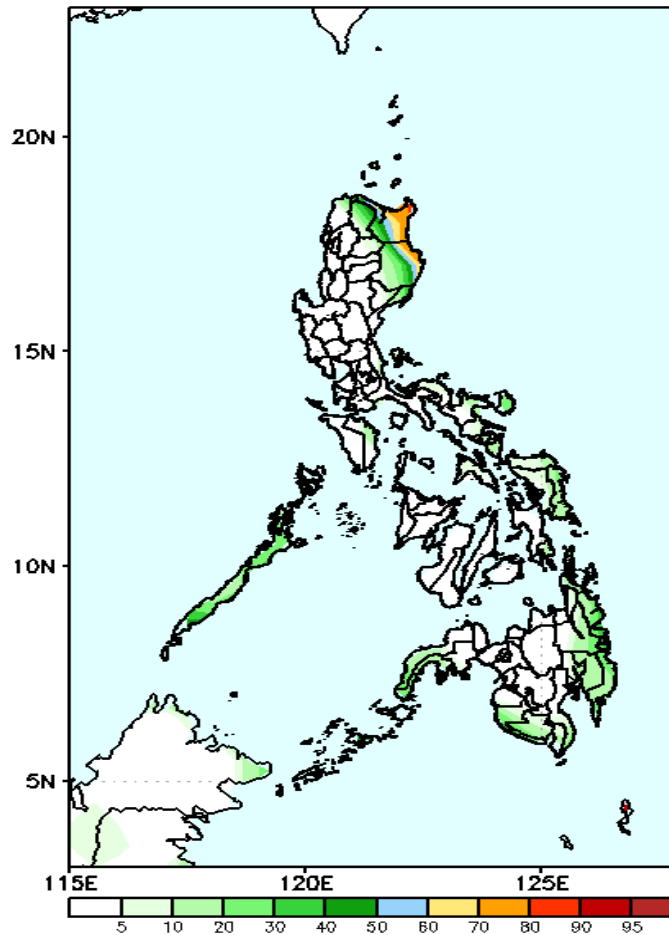
## Week 1: Nov 25-Dec 01, 2021

GEFS Week-1 Exceedance Prob. > 100mm  
Valid: 20211125 - 20211201



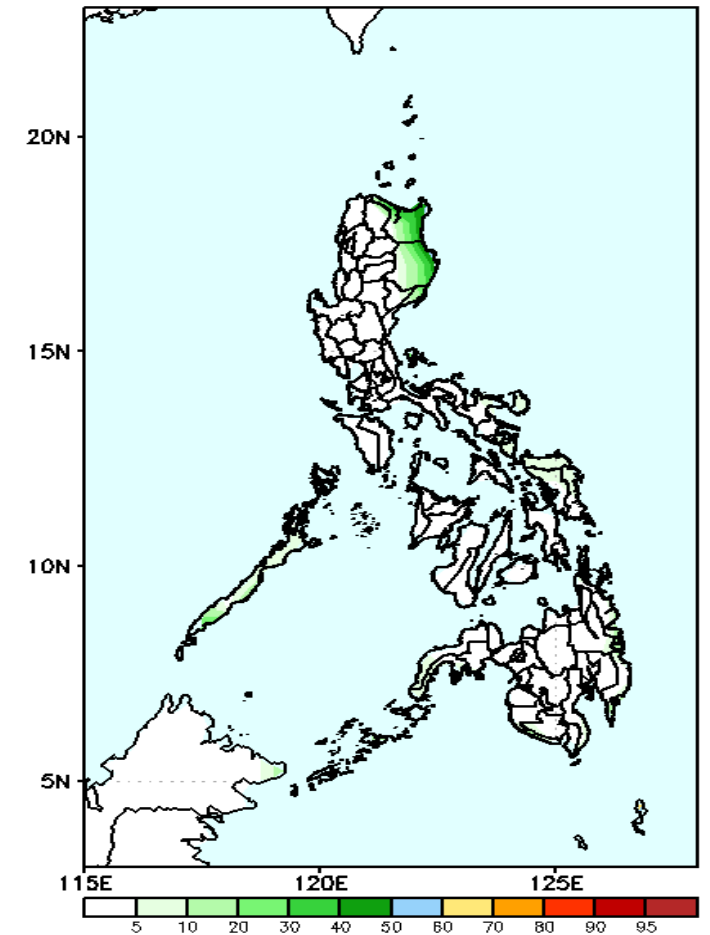
High probability of rainfall to exceed 100mm in the provinces of Apayao, Cagayan, Isabela, and Catanduanes while less likely for the rest of the country during the forecast period.

GEFS Week-1 Exceedance Prob. > 150mm  
Valid: 20211125 - 20211201



50-80% probability of rainfall to exceed 150mm in Cagayan & Isabela while less likely for the rest of the country during the forecast period.

GEFS Week-1 Exceedance Prob. > 200mm  
Valid: 20211125 - 20211201



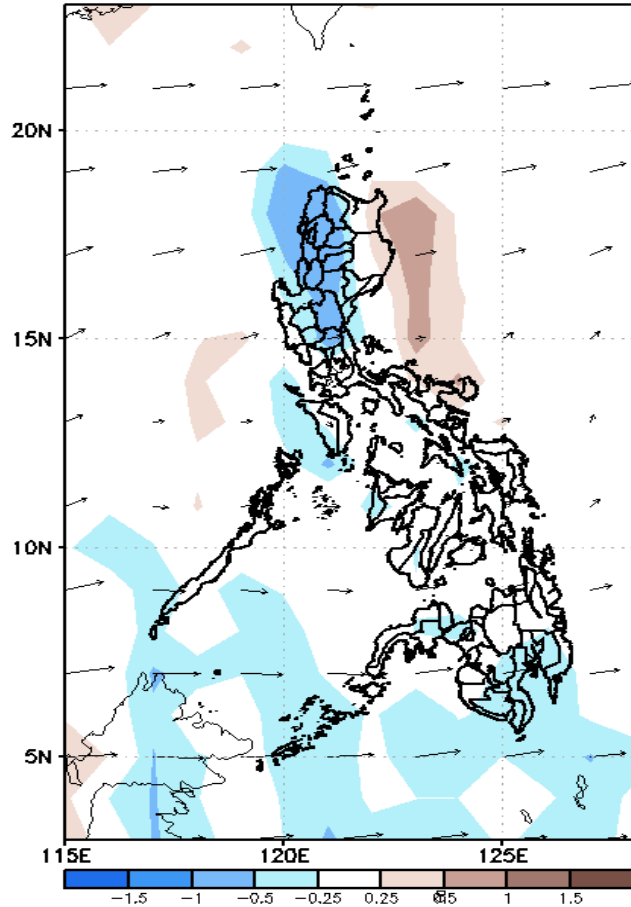
Less probability of rainfall to exceed 200mm in most parts of the country is expected during the forecast period.



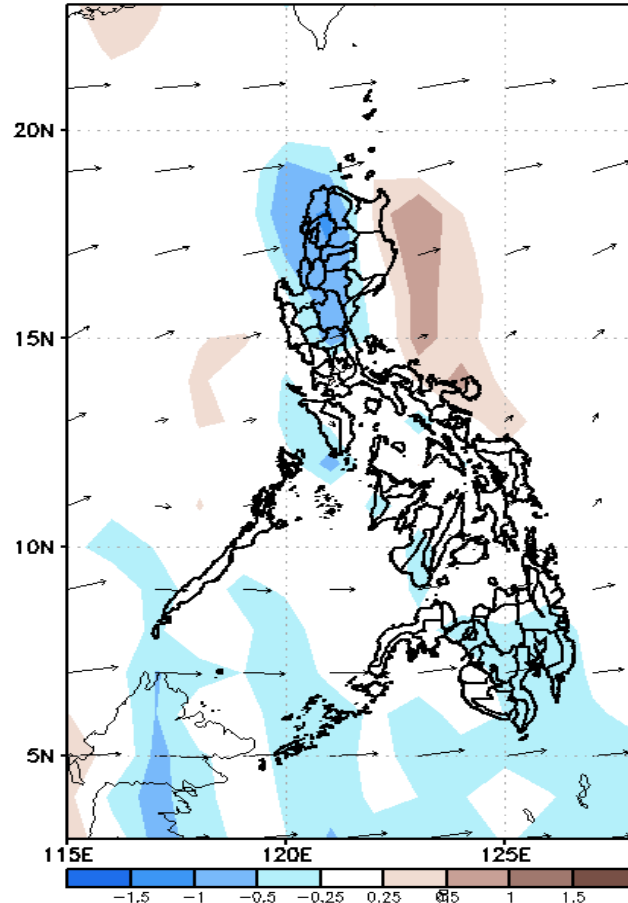
# GEFS Week-2 Forecasts: Divergence & Wind Anomaly

Week 2: Nov 29-Dec 05, 2021

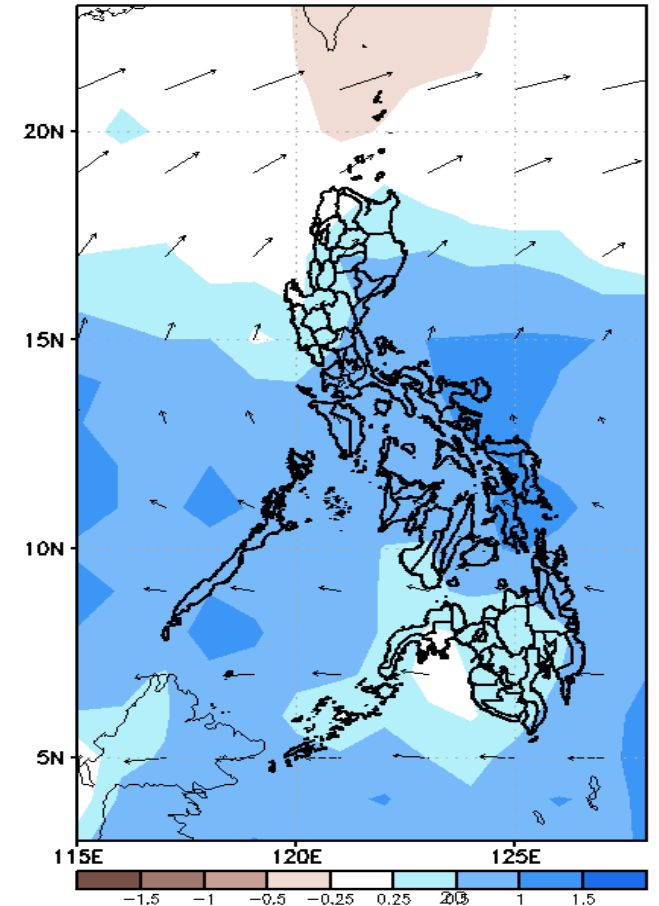
GEFS Week-2 850-hPa Divergence and Wind Anom  
Valid: 20211202 - 20211208



GEFS Week-2 700-hPa Divergence and Wind Anom  
Valid: 20211202 - 20211208



GEFS week-2 200-hPa Divergence and Wind Anom  
Valid: 20211202 - 20211208

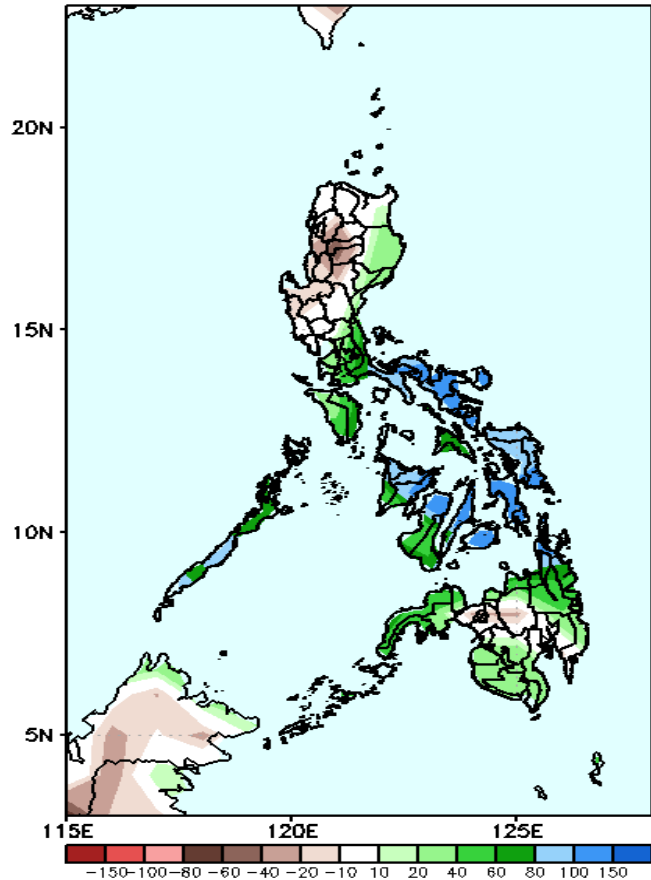


Upper and low level Divergence suggest likelihood of light to moderate precipitation in most parts of the country. Northeast Monsoon affecting Northern – Extreme Northern Luzon while Easterlies affecting the rest of the country during the forecast period.

# Precipitation Anomaly and Exceedance Probability > 25/50 mm

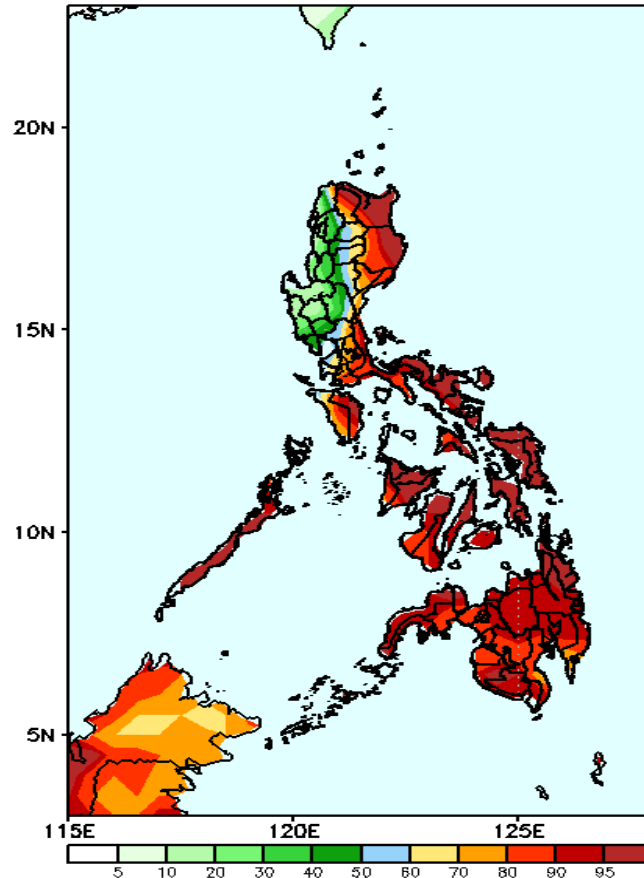
Week 2: Dec 02-08, 2021

GEFS Week-2 Precip Anomaly  
Valid: 20211202 - 20211208



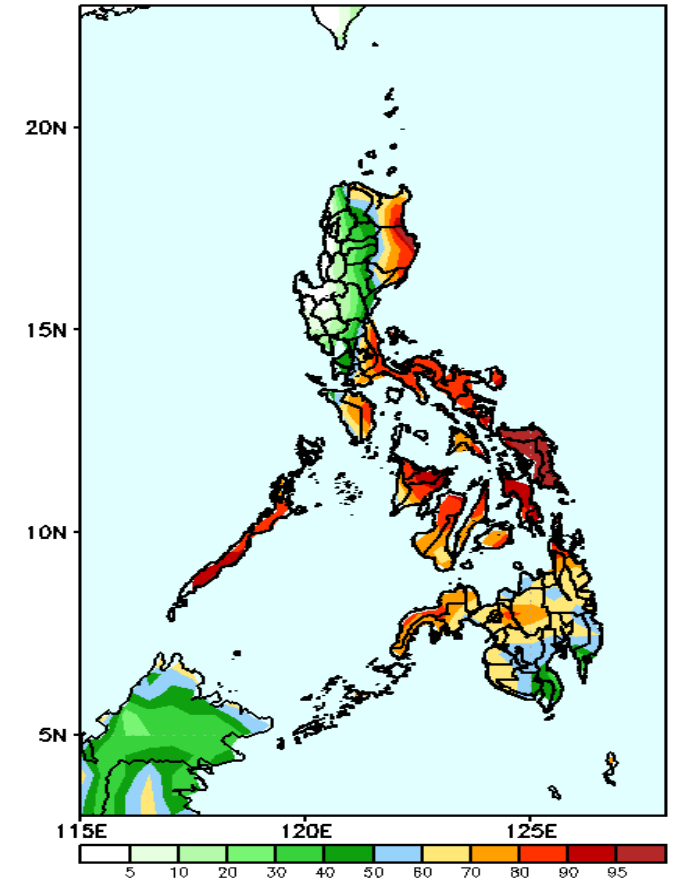
Increase of rainfall of 80-150mm most parts of Quezon, Bicol Region and Visayas and up to 70mm increase in Isabela, Southern Luzon, western Visayas and most parts of Mindanao during the forecast period.

GEFS Week-2 Exceedance Prob. > 25mm  
Valid: 20211202 - 20211208



High probability of rainfall to exceed 25mm in most parts of the country except Ilocos Region, Cagayan Valley (except Apayao), and most parts of Central Luzon during the forecast period.

GEFS Week-2 Exceedance Prob. > 50mm  
Valid: 20211202 - 20211208



High probability of rainfall to exceed 50mm in Cagayan, Isabela, Southern Luzon and most parts of Visayas and Mindanao while less likely for the rest of Luzon during the forecast period.

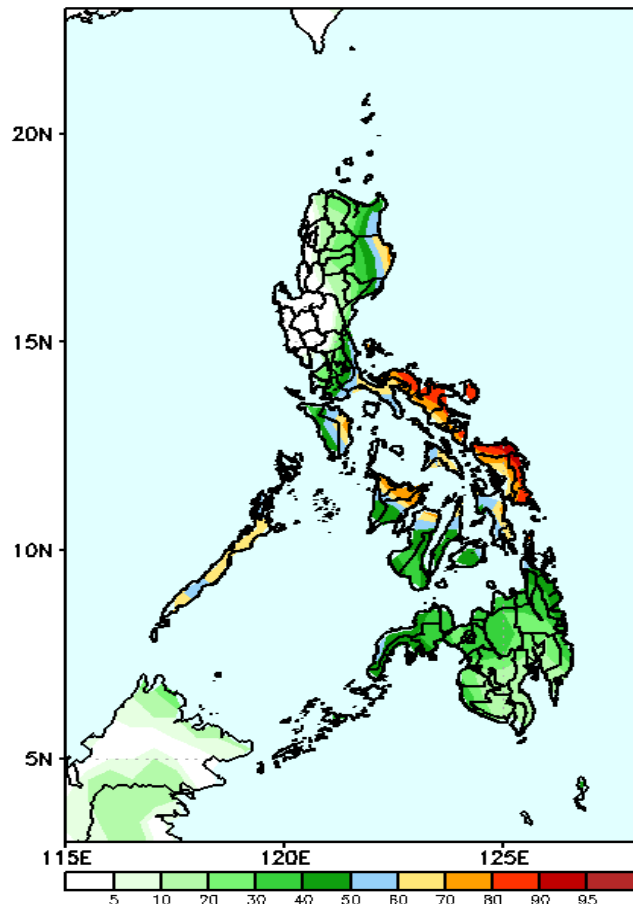




# Exceedance Probability > 100/150/200 mm

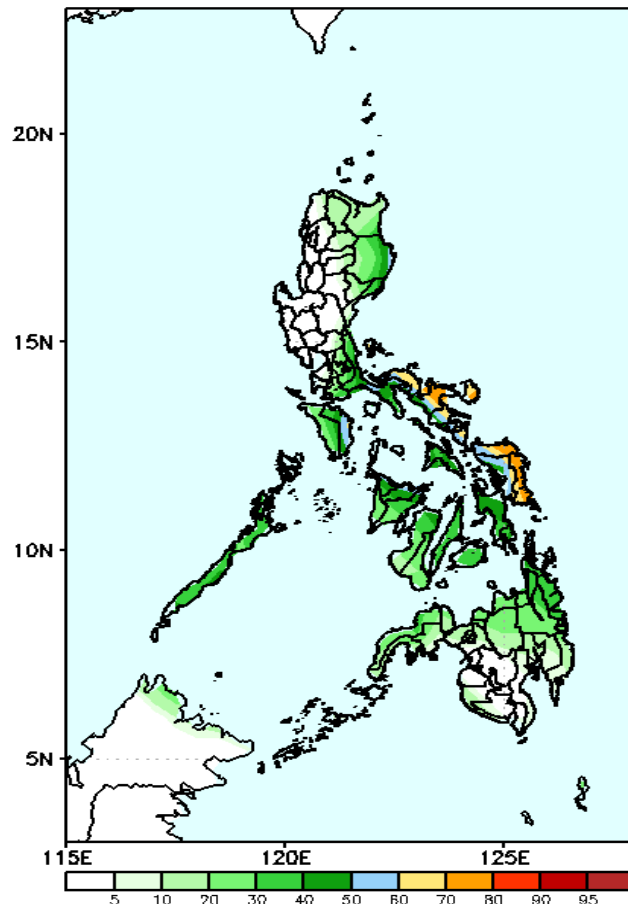
## Week 2: Dec 02-08, 2021

GEFS Week-2 Exceedance Prob. > 100mm  
Valid: 20211202 - 20211208



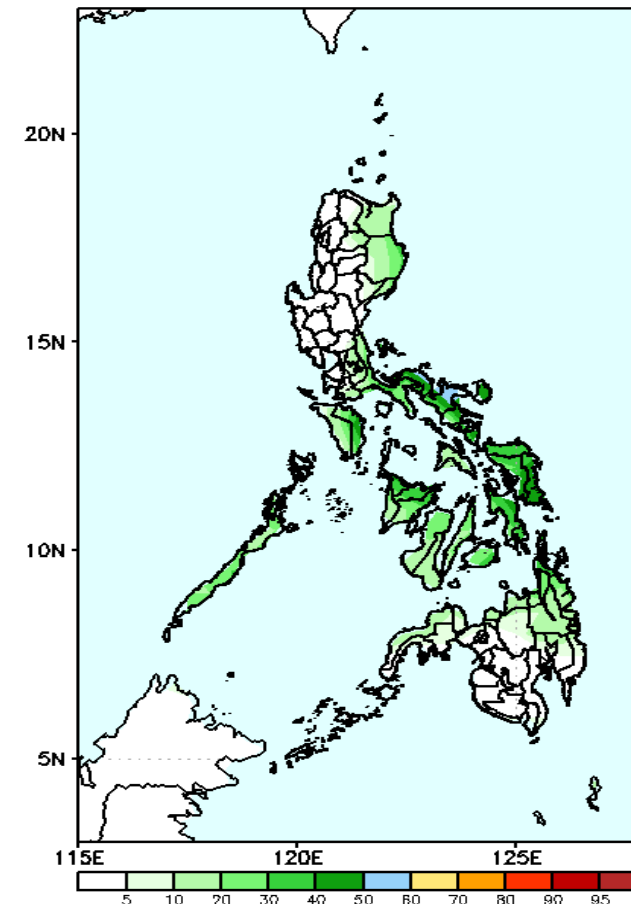
60-90% probability of rainfall to exceed 100mm in Bicol Region, Oriental Mindoro, Palawan, Aklan, Capiz and Eastern Visayas while less likely for the rest of the country during the forecast period

GEFS Week-2 Exceedance Prob. > 150mm  
Valid: 20211202 - 20211208



60-90% probability of rainfall to exceed 150mm in Bicol Region and Eastern Visayas while less likely for the rest of the country during the forecast period

GEFS Week-2 Exceedance Prob. > 200mm  
Valid: 20211202 - 20211208

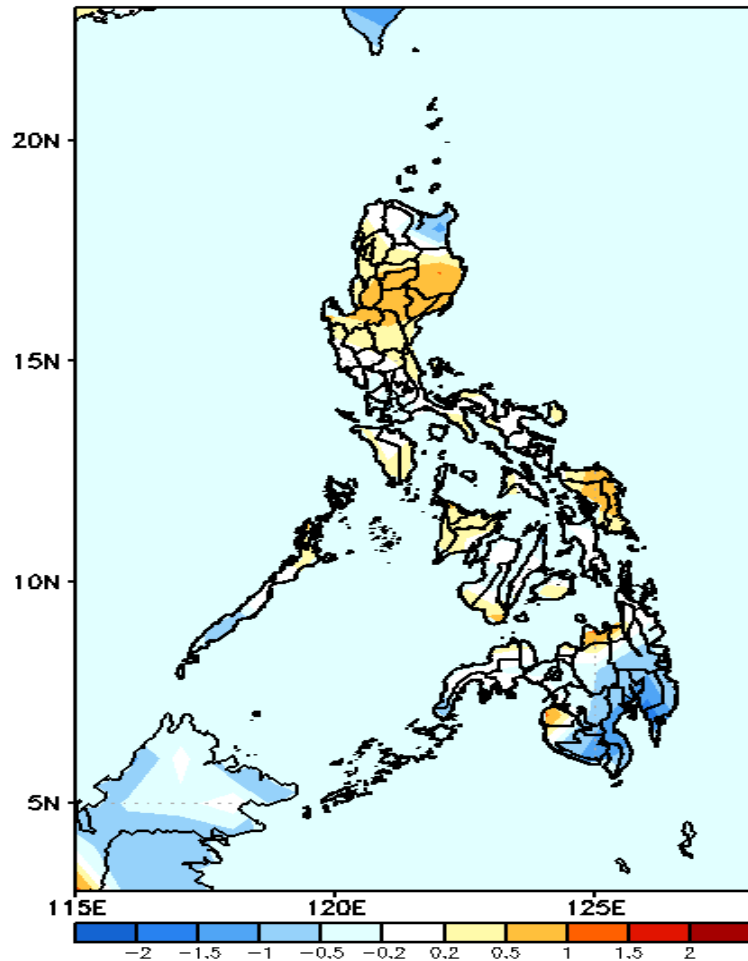


Less probability of rainfall to exceed 200mm in most parts of the country is expected during the forecast period.



# GEFS Week-1 & 2 Forecasts: T2m Anomaly

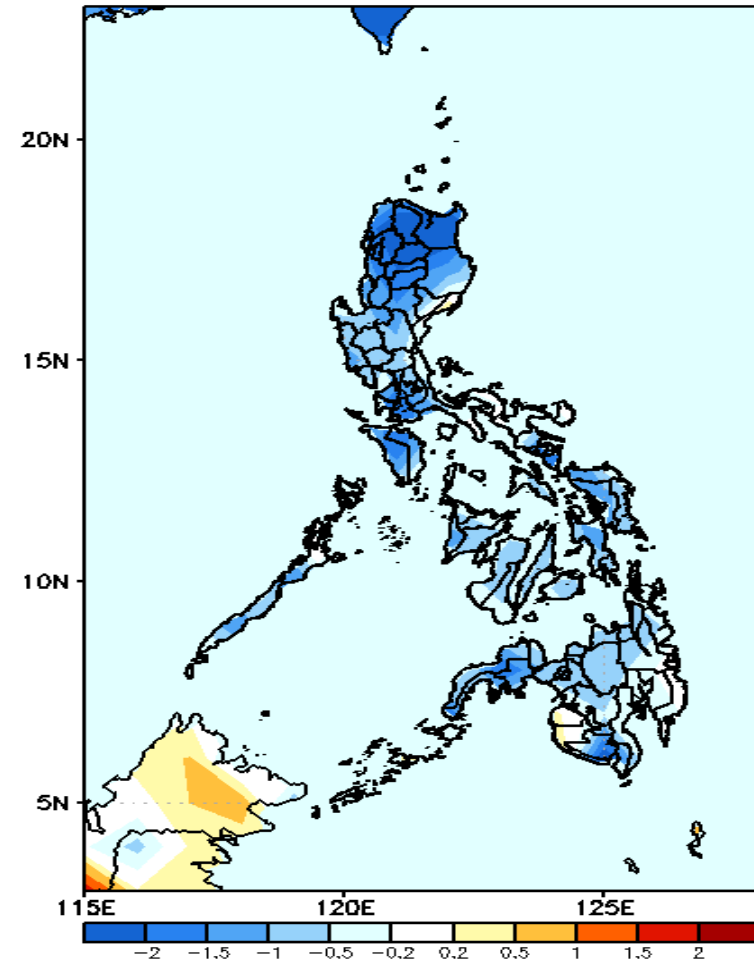
GEFS Week-1 T2m Anomaly  
Valid: 20211125 - 20211201



## 2m Temperature Week 1: Nov 25-Dec 01, 2021

Average to slightly warmer to warmer than average surface air temperature will likely experience in most parts of the country except in Cagayan and Southern Mindanao where slightly cooler than average temperature is more likely during the forecast period.

GEFS Week-2 T2m Anomaly  
Valid: 20211202 - 20211208



## 2m Temperature Week 2: Dec 02-08, 2021

Slightly cooler to cooler than average surface air temperature will likely experience in most parts of the country during the forecast period.