



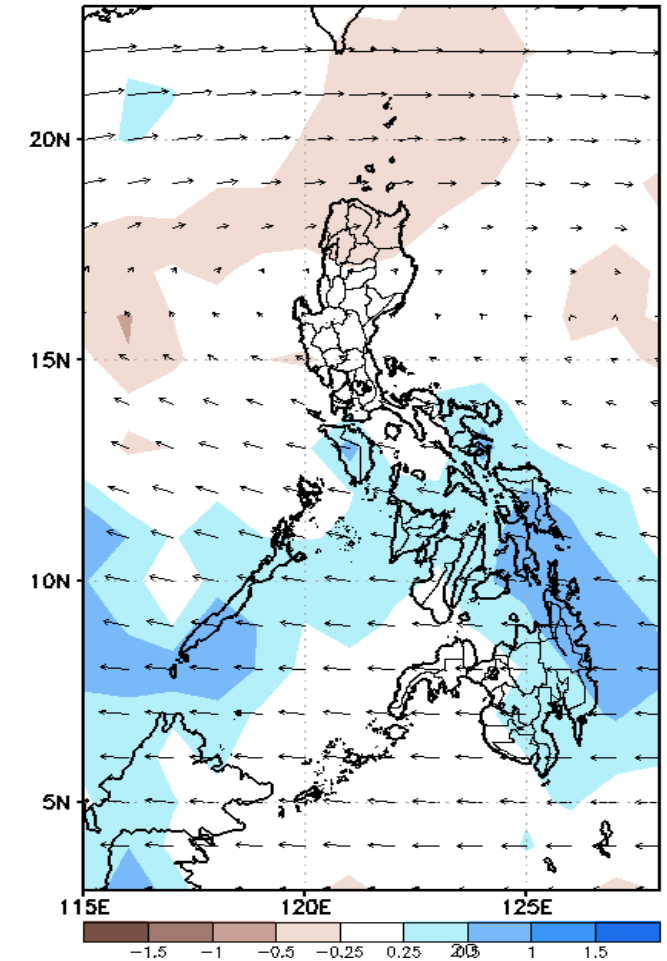
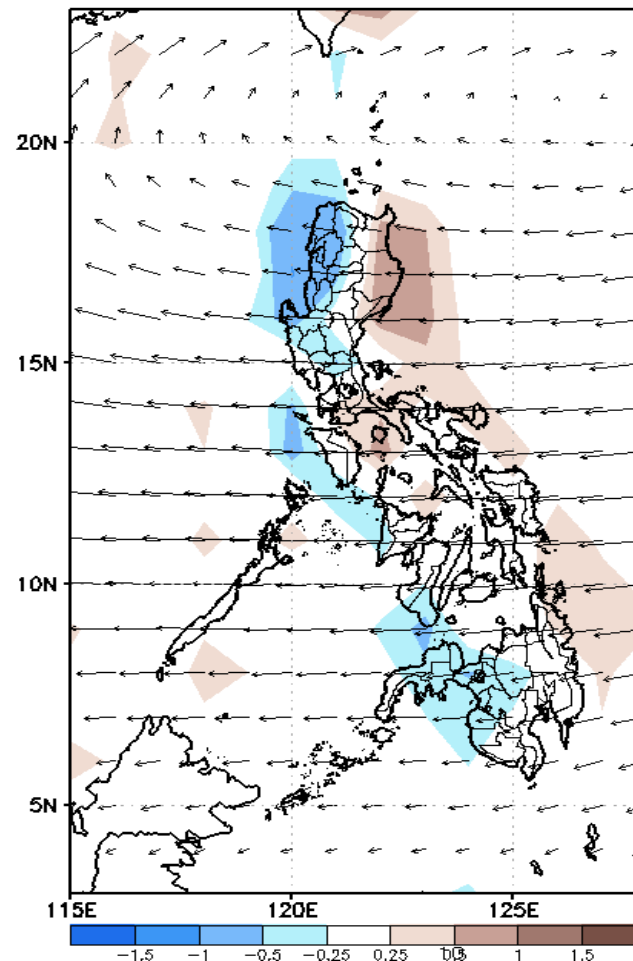
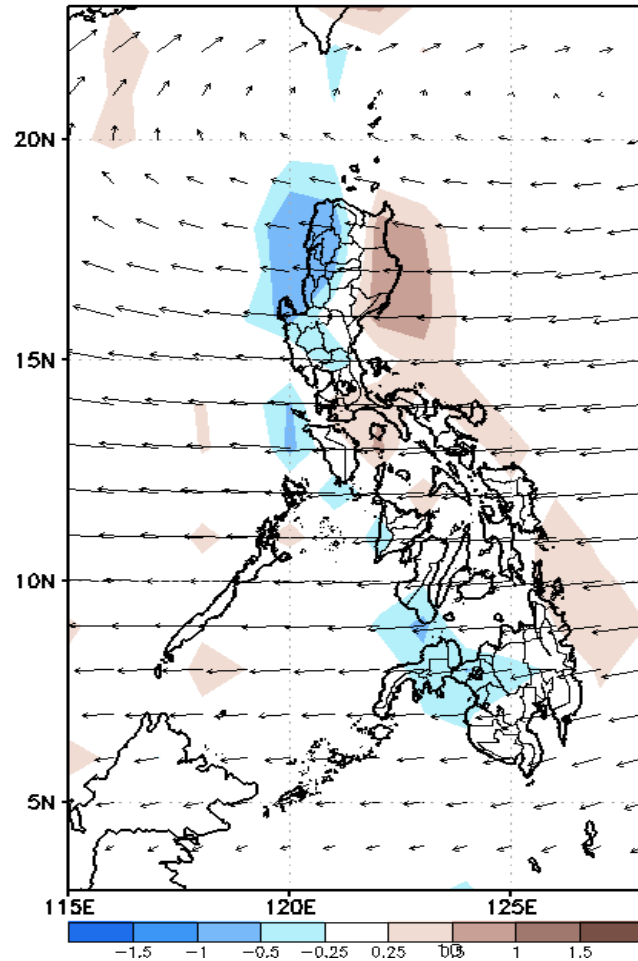
Week 1 & Week 2 Forecast for the Philippines using GEFS Model



GEFS Week-1 Forecasts: Wind Anomaly Forecast

Week 1: Nov 25- Dec 01, 2022

GEFS Week-1 850-hPa Divergence and Wind Anom
Valid: 20221125 - 20221201

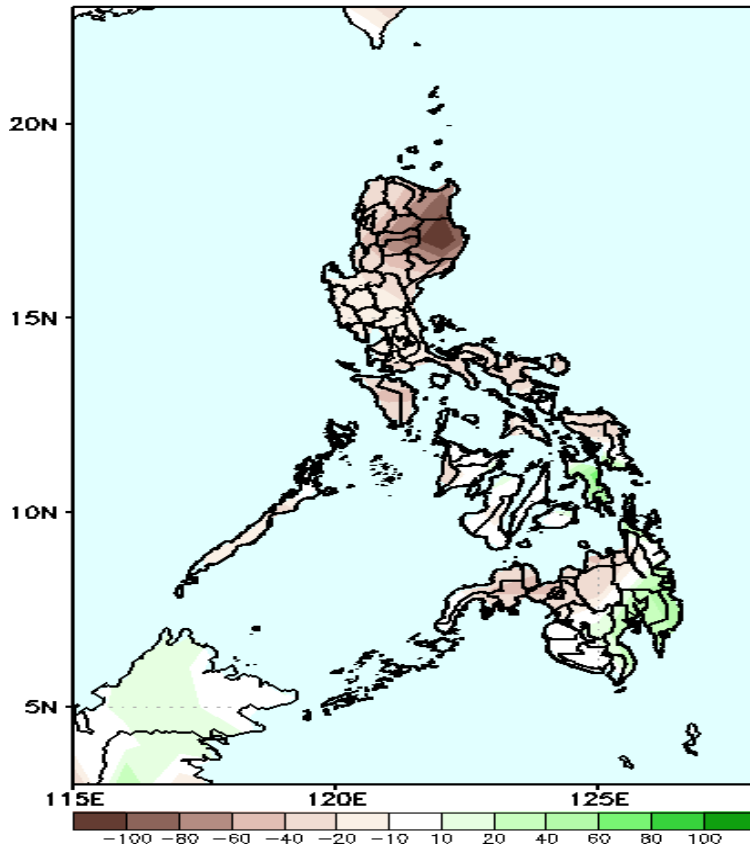


Easterlies will likely affect most parts of the country during the forecast period.

Precipitation Anomaly and Exceedance Probability > 25/50 mm

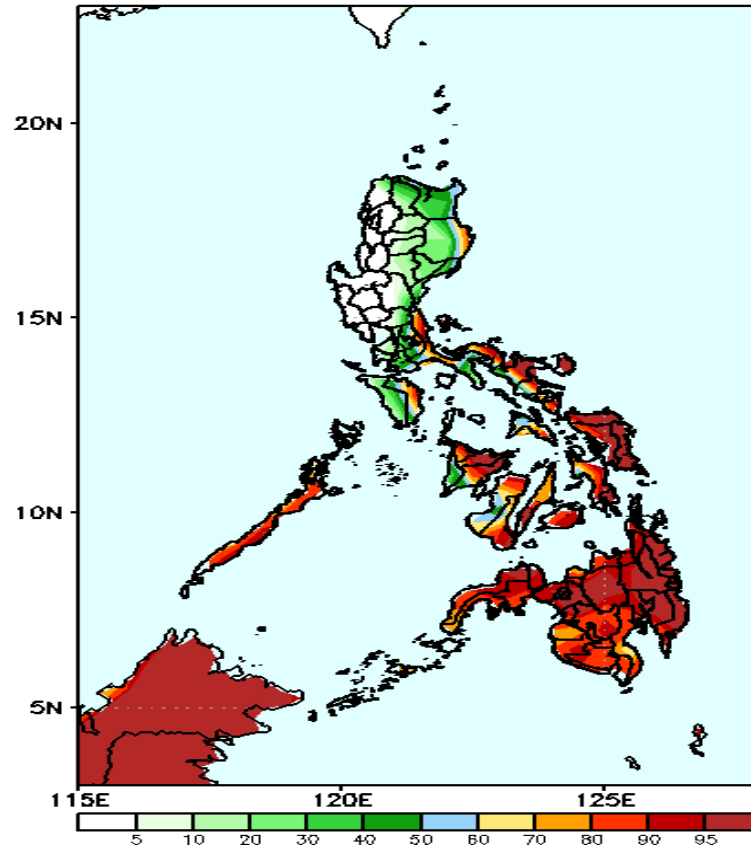
Week 1: Nov 25- Dec 01, 2022

GEFS Week-1 Precip Anomaly
Valid: 20221125 - 20221201



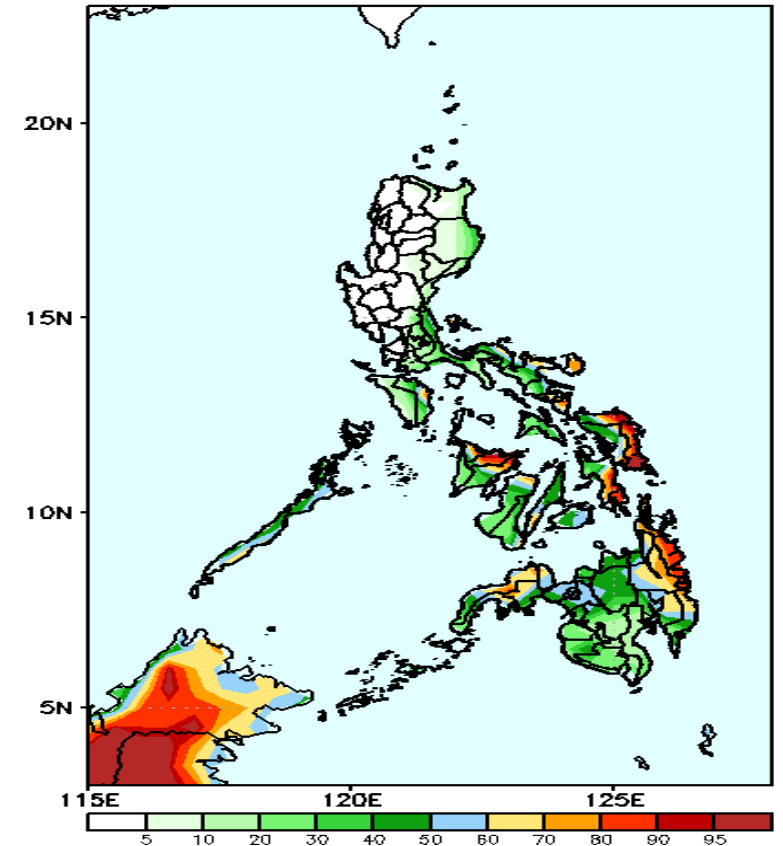
Rainfall deficit of more than 100mm is expected in Cagayan and Isabela and 40-80mm in most parts of the country except 40-70mm increase of rainfall in Leyte provinces and Davao Region during the forecast period.

GEFS Week-1 Exceedance Prob. > 25mm
Valid: 20221125 - 20221201



High probability of rainfall to exceed 25mm in Quezon, most parts of Bicol region, Palawan and most parts of Visayas and Mindanao while less likely for the rest of Luzon during the forecast period.

GEFS Week-1 Exceedance Prob. > 50mm
Valid: 20221125 - 20221201



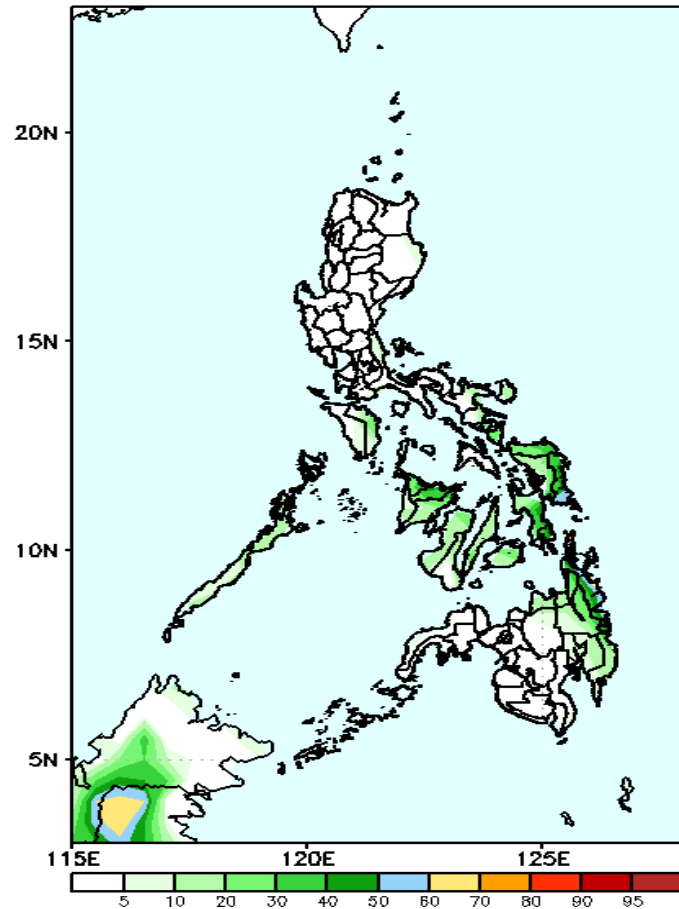
High probability of rainfall to exceed 50mm in Catanduanes, Sorsogon, Capiz, Eastern Visayas, Eastern Mindanao and some areas in Zamboanga Peninsula while less likely for the rest of the country during the forecast period.



Exceedance Probability > 100/150/200 mm

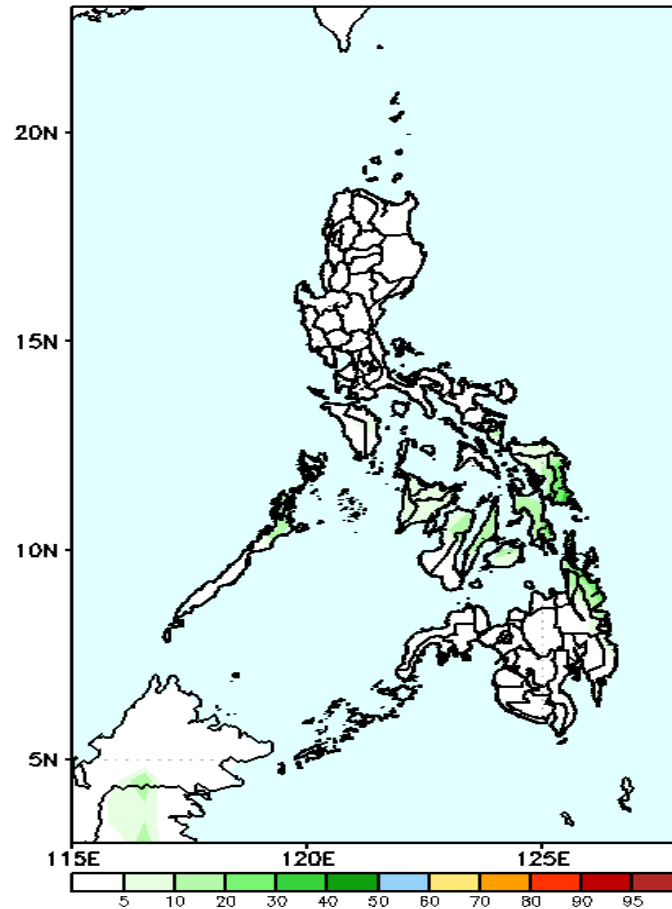
Week 1: Nov 25- Dec 01, 2022

GEFS Week-1 Exceedance Prob. > 100mm
Valid: 20221125 - 20221201



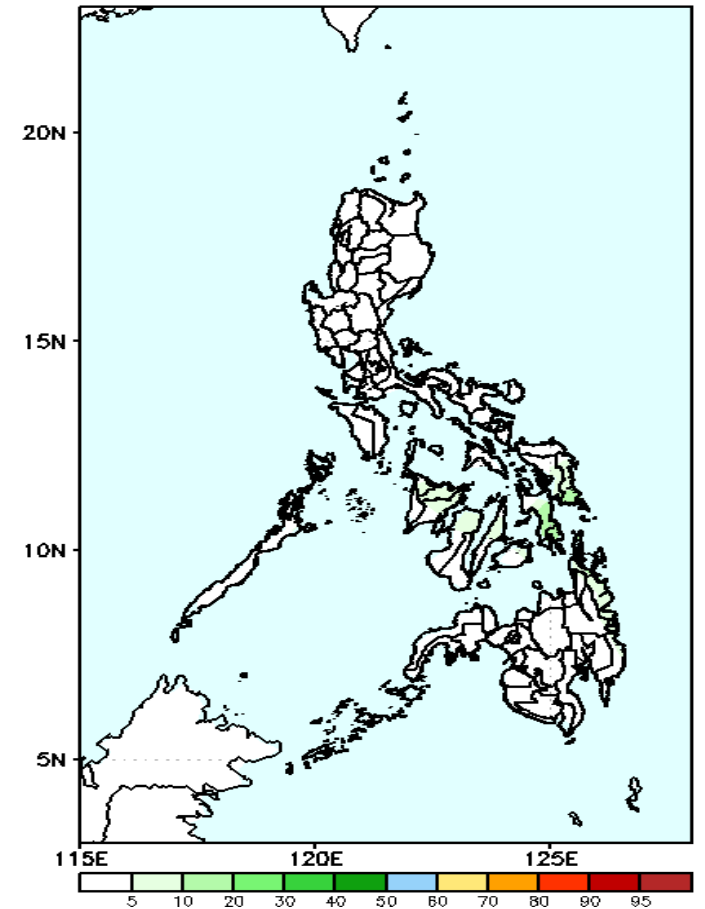
Low probability of rainfall to exceed 100mm in most parts of the country during the forecast period.

GEFS Week-1 Exceedance Prob. > 150mm
Valid: 20221125 - 20221201



Low probability of rainfall to exceed 150mm in most parts of the country during the forecast period.

GEFS Week-1 Exceedance Prob. > 200mm
Valid: 20221125 - 20221201

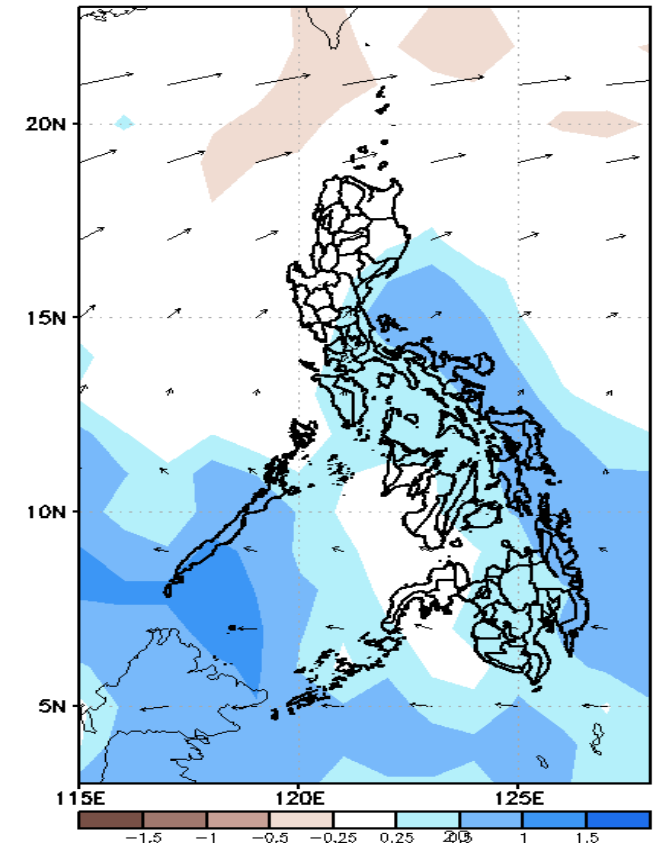
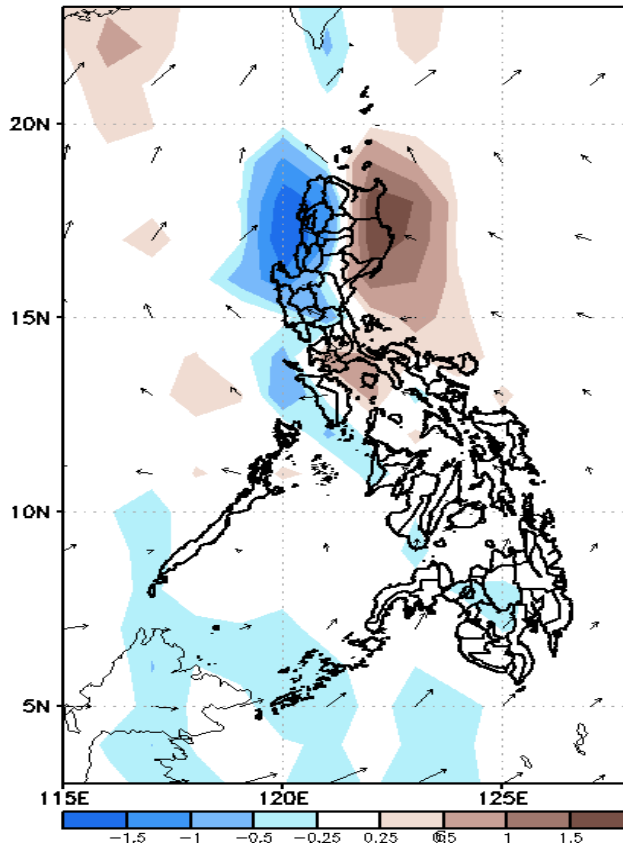
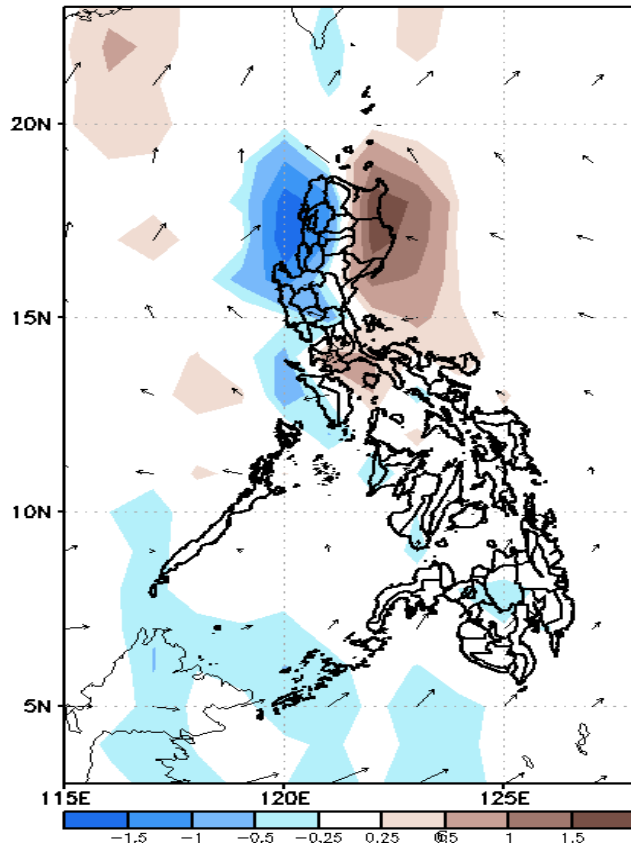


Low probability of rainfall to exceed 200mm in most parts of the country during the forecast period.

GEFS Week-2 Forecasts: Wind Anomaly Forecast

Week 2: Dec 02-08, 2022

GEFS Week-2 850-hPa Divergence and Wind AnomGEFS Week-2 700-hPa Divergence and Wind AnomGEFS week-2 200-hPa Divergence and Wind Anom
Valid: 20221202 – 20221208Valid: 20221202 – 20221208Valid: 20221202 – 20221208

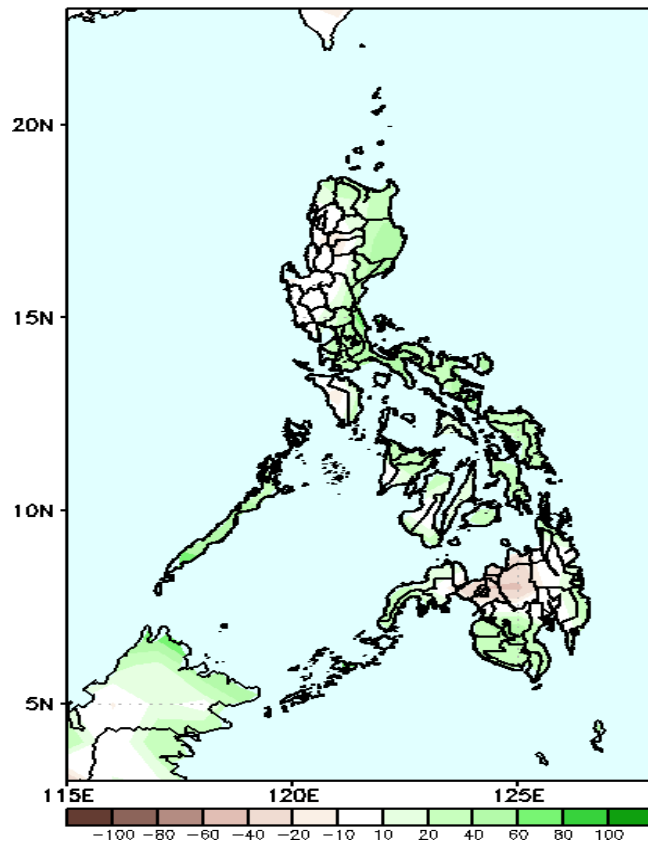


Easterlies will likely affect most parts of the country during the forecast period.

Precipitation Anomaly and Exceedance Probability > 25/50 mm

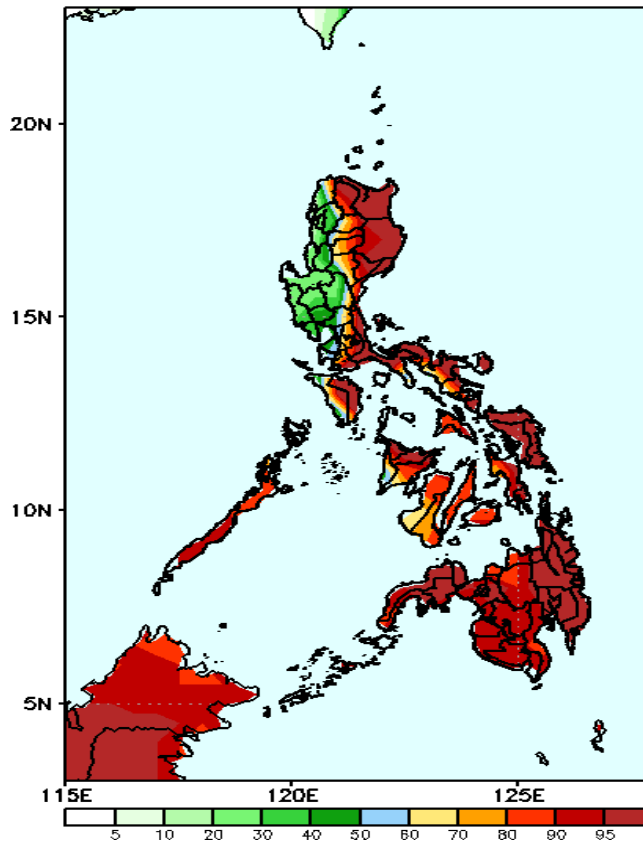
Week 2: Dec 02-08, 2022

GEFS Week-2 Precip Anomaly
Valid: 20221202 - 20221208



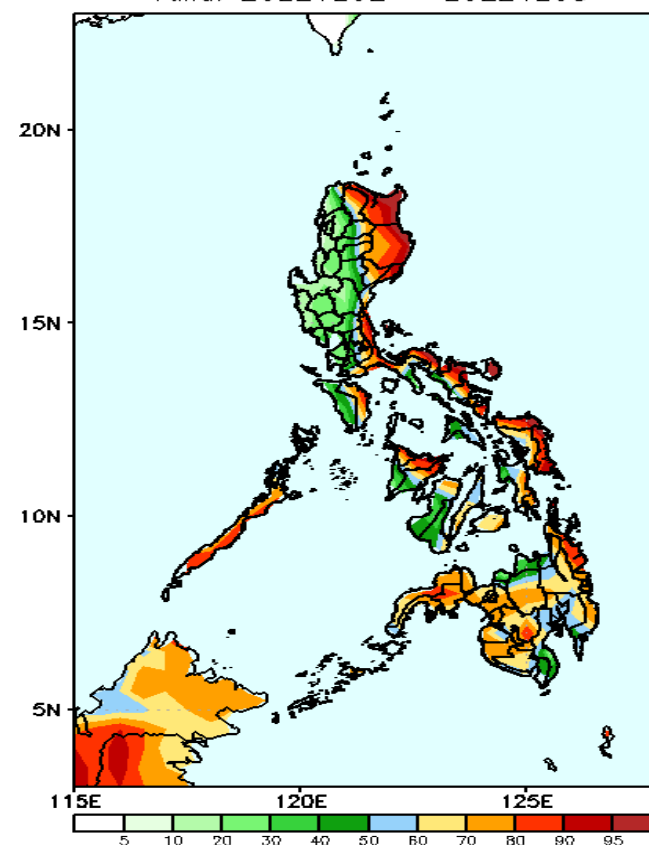
Increase of Rainfall of 40-80mm is most likely in parts of the country except in Bukidnon during the forecast period.

GEFS Week-2 Exceedance Prob. > 25mm
Valid: 20221202 - 20221208



High probability of rainfall to exceed 25mm in most parts of the country except most parts of Ilocos region and Central Luzon (except Aurora) during the forecast period.

GEFS Week-2 Exceedance Prob. > 50mm
Valid: 20221202 - 20221208

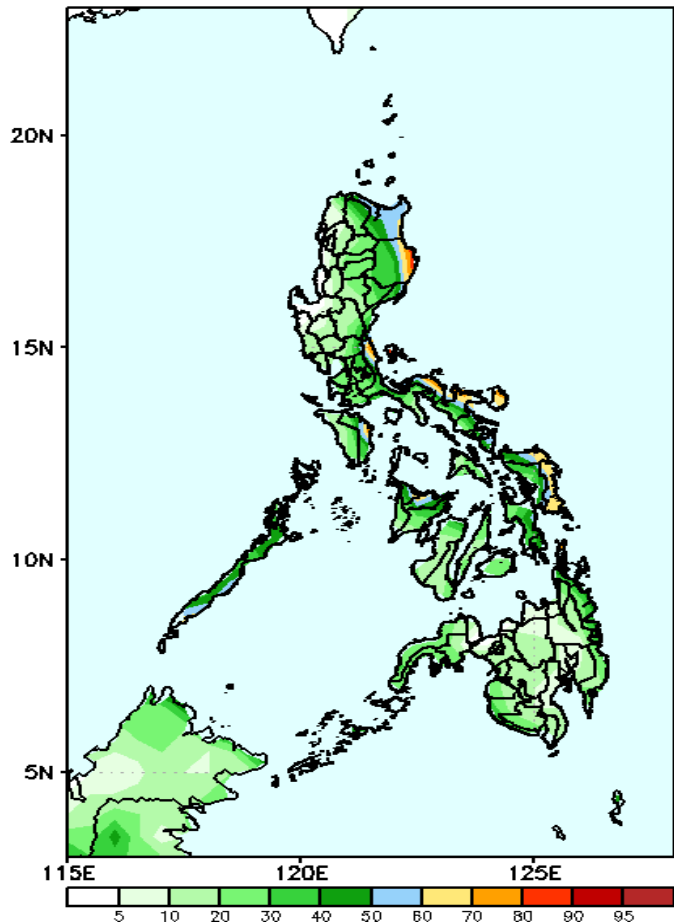


High probability of rainfall to exceed 50mm in the eastern parts of CAR, most parts of Eastern Luzon, Mindoro Oriental, Palawan and most parts of Visayas and Mindanao while less likely for the rest of Luzon during the forecast period.

Exceedance Probability > 100/150/200 mm

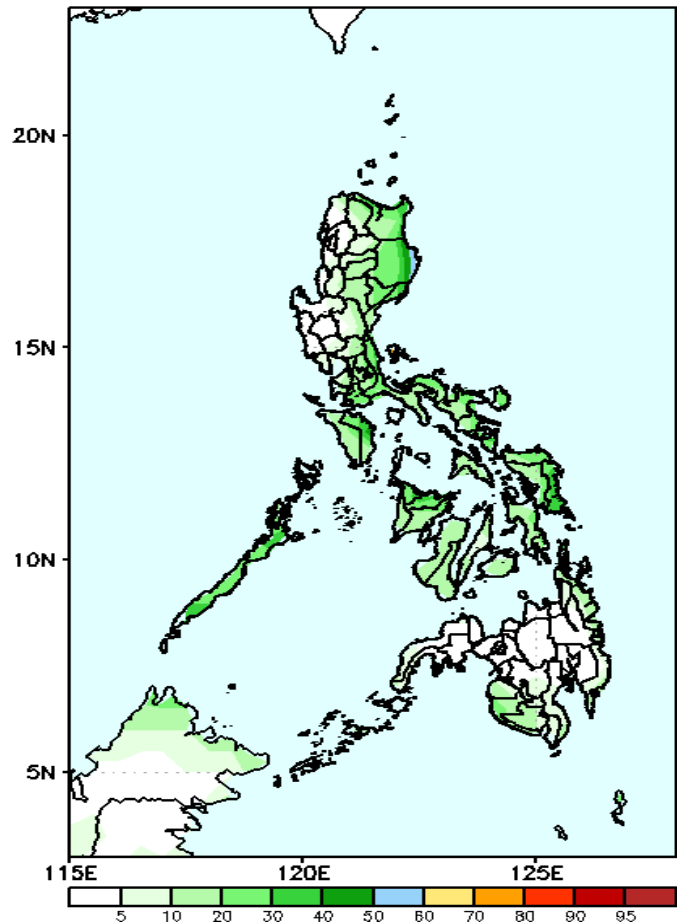
Week 2: Dec 02-08, 2022

GEFS Week-2 Exceedance Prob. > 100mm
Valid: 20221202 – 20221208



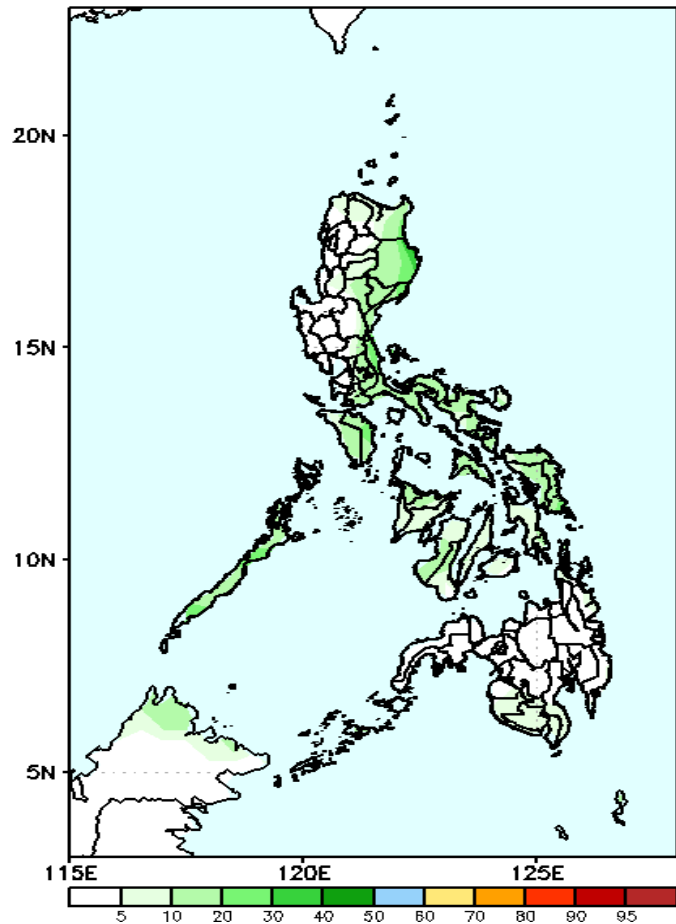
Low probability of rainfall to exceed 100mm in most parts of the country except eastern part of Cagayan and Isabela and some parts of Bicol and Eastern Visayas during the forecast period.

GEFS Week-2 Exceedance Prob. > 150mm
Valid: 20221202 – 20221208



Low probability of rainfall to exceed 150mm in most parts of the country during the forecast period.

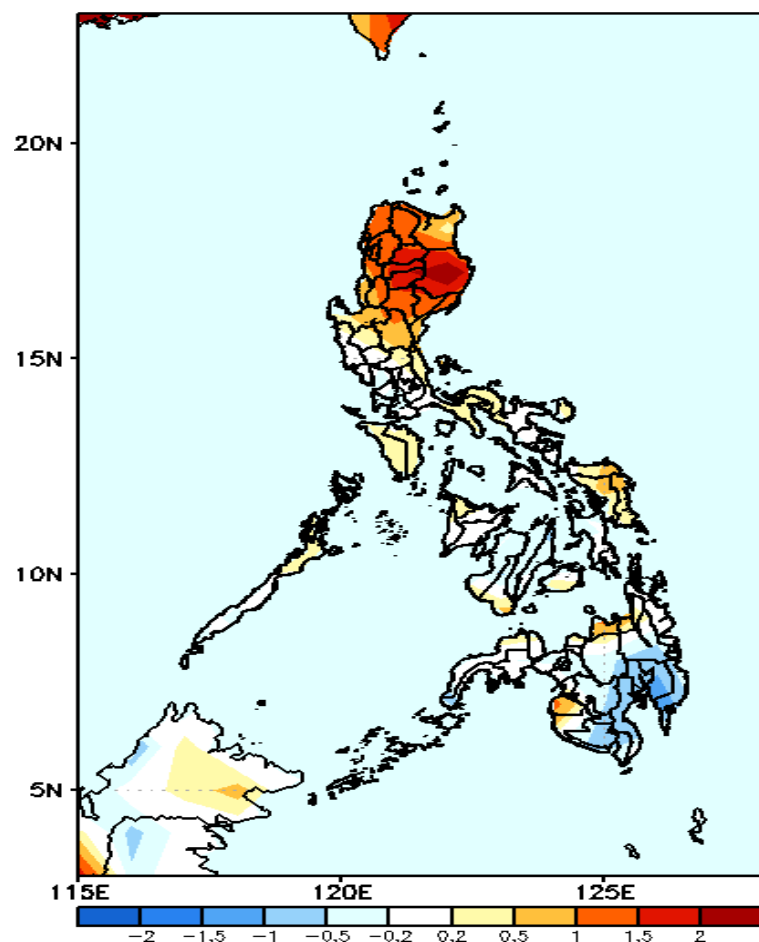
GEFS Week-2 Exceedance Prob. > 200mm
Valid: 20221202 – 20221208



Low probability of rainfall to exceed 200mm in most parts of the country during the forecast period.

GEFS Week-1 & 2 Forecasts: T2m Anomaly

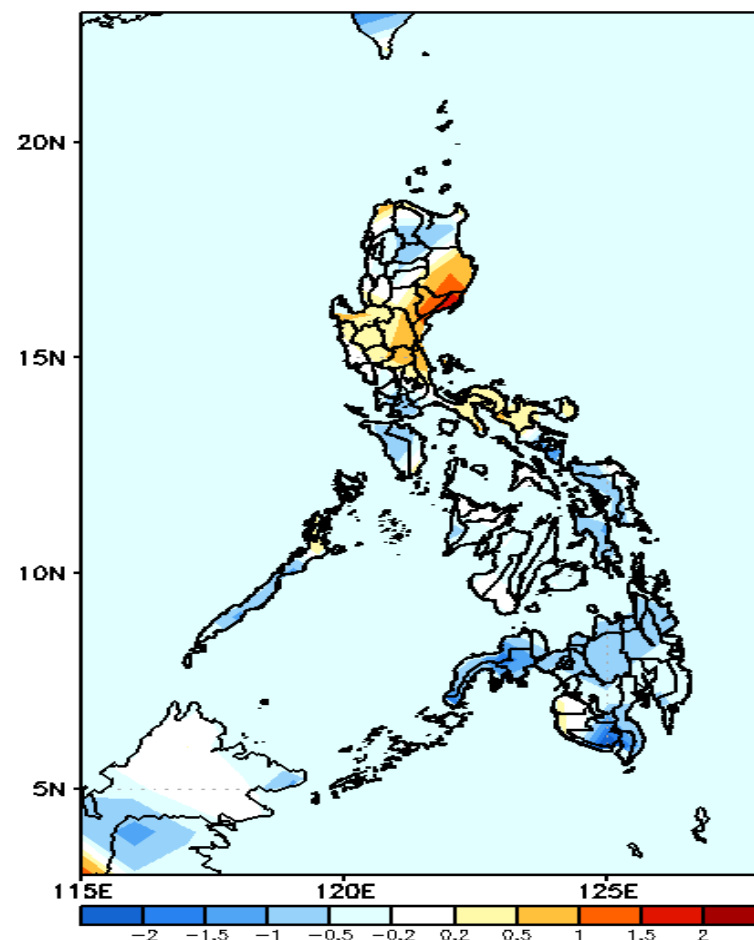
GEFS Week-1 T2m Anomaly
Valid: 20221125 - 20221201



2m Temperature Week 1: Nov 25- Dec 01, 2022

Warmer than average surface air temperature will likely experience in most parts Northern Luzon while average to slightly warmer for the rest of the country except in southern Mindanao (slightly cooler) during the forecast period.

GEFS Week-2 T2m Anomaly
Valid: 20221202 - 20221208



2m Temperature Week 2: Dec 02-08, 2022

Near to cooler than average surface air temperature will likely experience in Cagayan, Kalinga, Mindoro, Palawan, and most parts of Visayas and Mindanao while slightly warmer to warmer than average temperature for the rest of Luzon during the forecast period.