



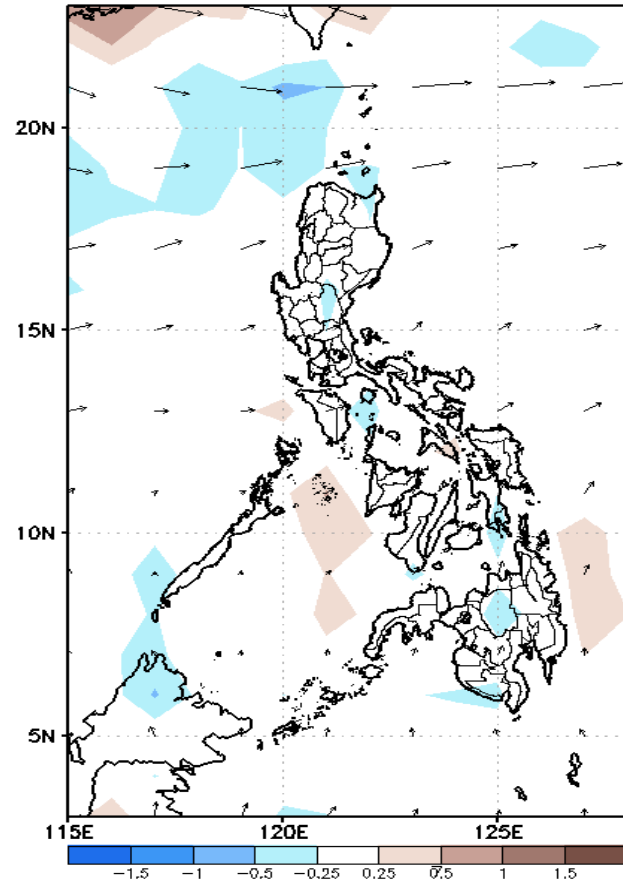
Week 1 & Week 2 Forecast for the Philippines using GEFS Model



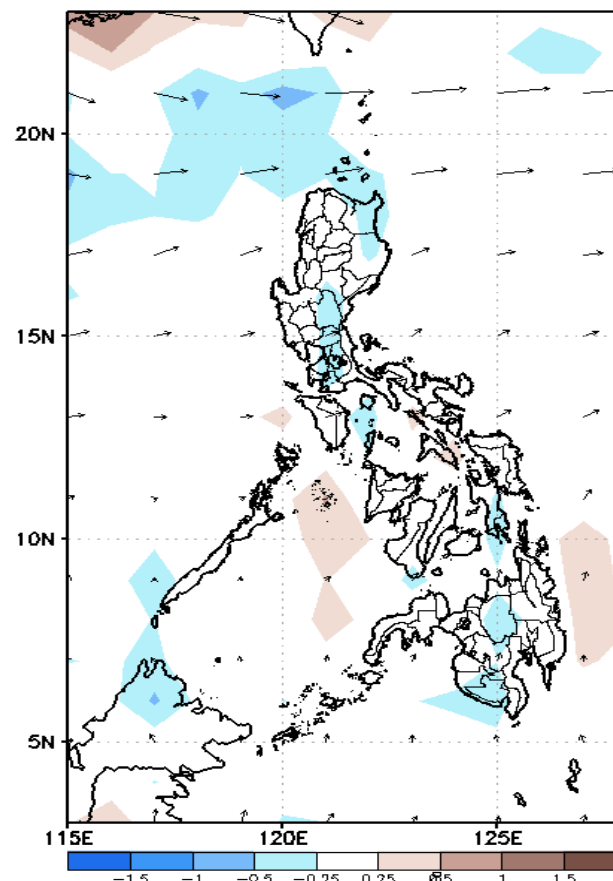
GEFS Week-1 Forecasts: Divergence & Wind Anomaly

Week 1: Feb 25- Mar 03, 2021

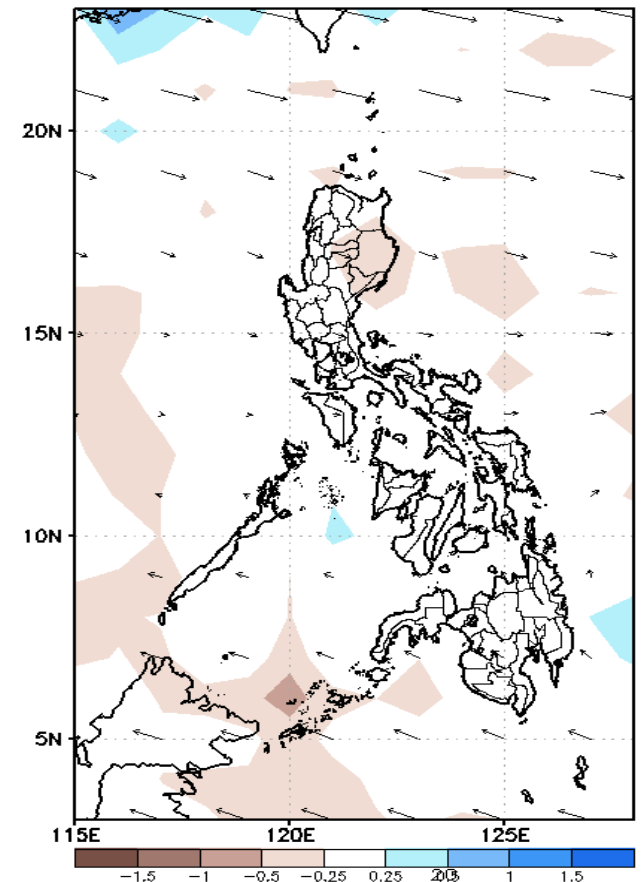
GEFS Week-1 850-hPa Divergence and Wind Anom
Valid: 20210225 - 20210303



GEFS Week-1 700-hPa Divergence and Wind Anom
Valid: 20210225 - 20210303



GEFS Week-1 200-hPa Divergence and Wind Anom
Valid: 20210225 - 20210303

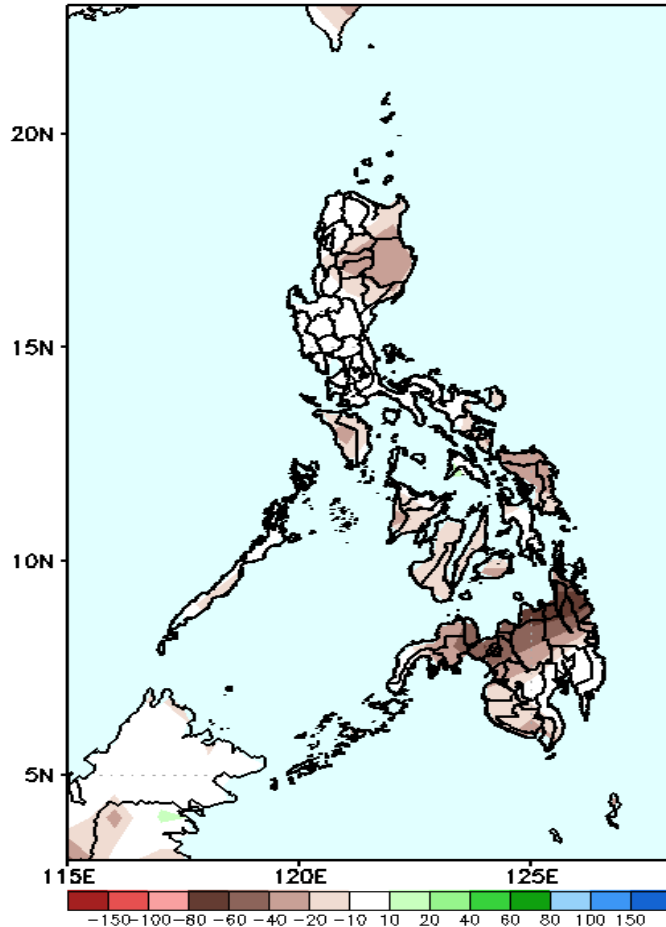


Upper and low level Divergence suggest less likelihood of precipitation in most parts of the country. Easterlies affecting most parts of the country. Northeast Monsoon affecting Extreme Northern Luzon during the forecast period.

Precipitation Anomaly and Exceedance Probability > 25/50 mm

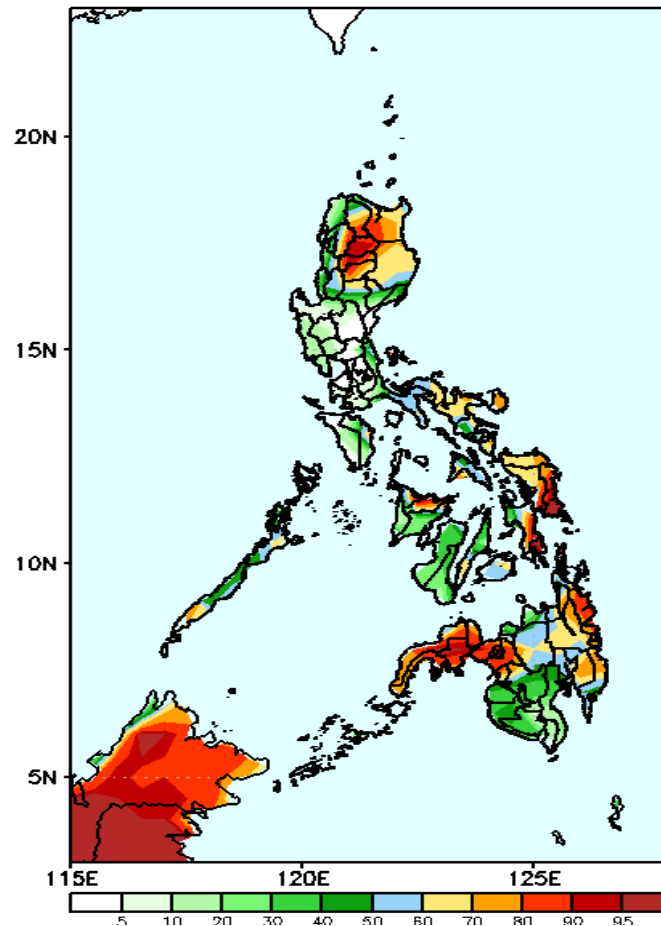
Week 1: Feb 25- Mar 03, 2021

GEFS Week-1 Precip Anomaly
Valid: 20210225 - 20210303



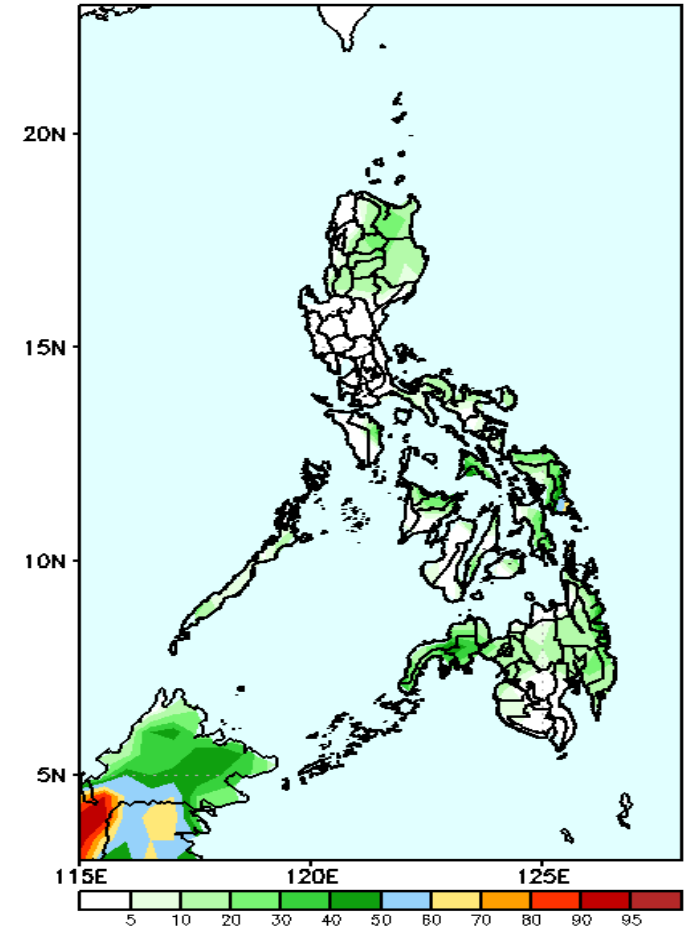
Rainfall deficit of 40-80mm is expected in Isabela, Mt. Province, Mindoro, Samar Provinces and up to 100mm is expected in northern half of Mindanao.

GEFS Week-1 Exceedance Prob. > 25mm
Valid: 20210225 - 20210303



High probability of rainfall to exceed 25mm in most parts of Cagayan, Isabela, Cordillera Region, Catanduanes, Camarines Sur, Eastern Visayas, Leyte provinces, Aklan, Capiz, most parts of eastern Mindanao and Zamboanga Peninsula while less likely for the rest of the country Norte during the forecast period.

GEFS Week-1 Exceedance Prob. > 50mm
Valid: 20210225 - 20210303



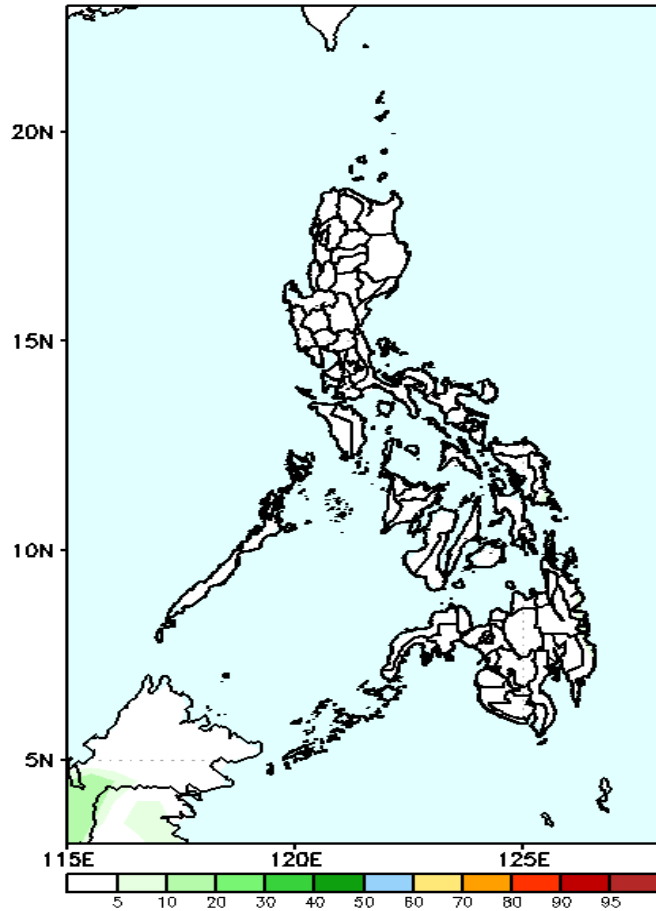
Less probability of rainfall to exceed 50mm in most parts of the country during the forecast period.



Exceedance Probability > 100/150/200 mm

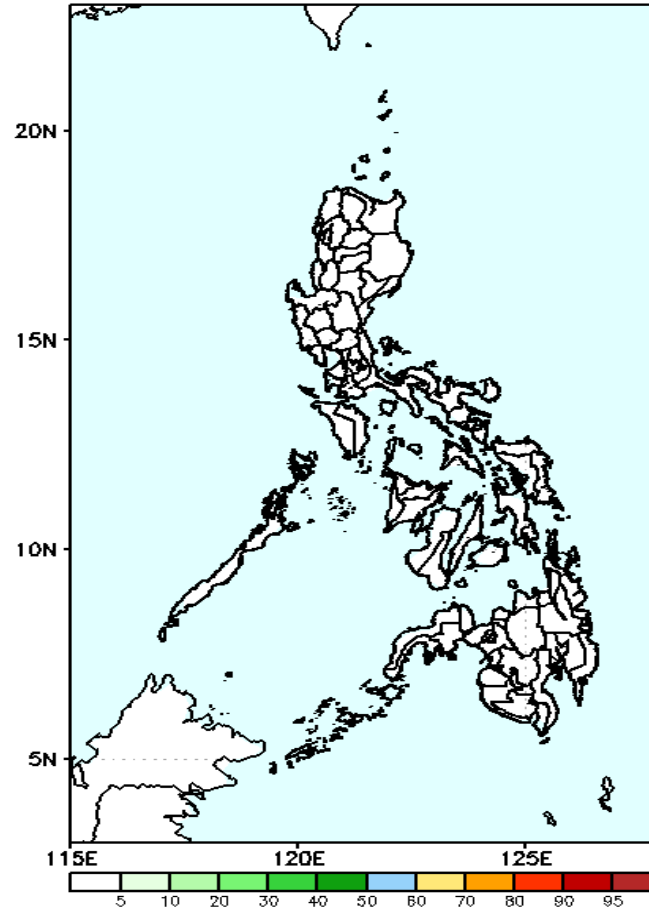
Week 1: Feb 25- Mar 03, 2021

GEFS Week-1 Exceedance Prob. > 100mm
Valid: 20210225 - 20210303



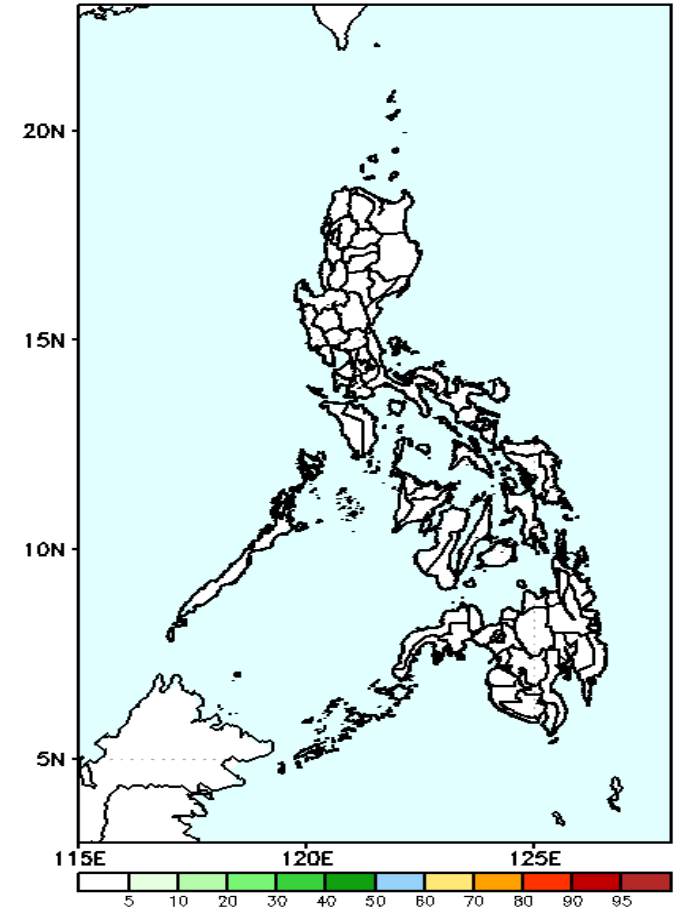
Less probability of rainfall to exceed 100mm in most parts of the country during the forecast period.

GEFS Week-1 Exceedance Prob. > 150mm
Valid: 20210225 - 20210303



Less probability of rainfall to exceed 150mm in most parts of the country during the forecast period.

GEFS Week-1 Exceedance Prob. > 200mm
Valid: 20210225 - 20210303



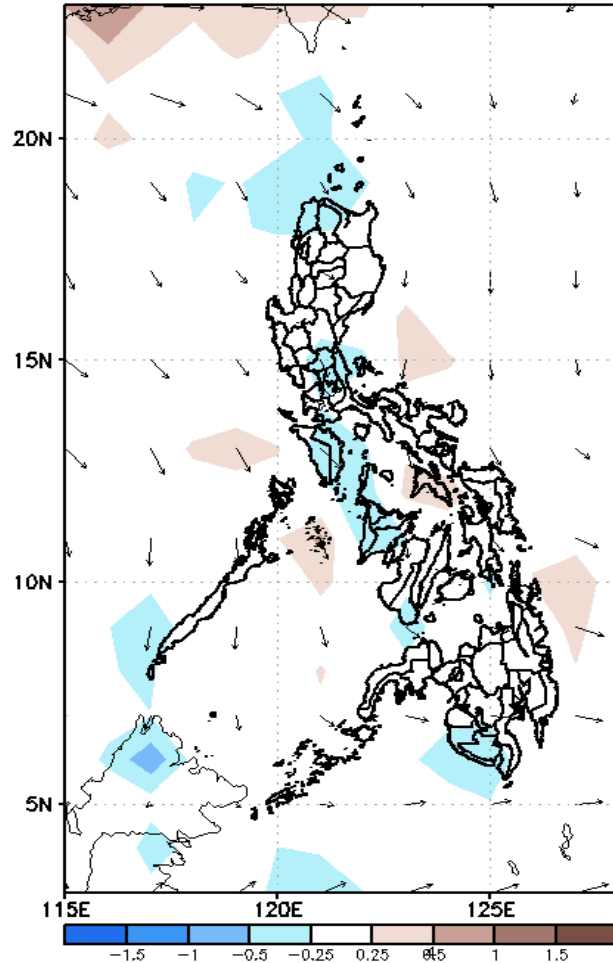
Less probability of rainfall to exceed 200mm in most parts of the country during the forecast period.



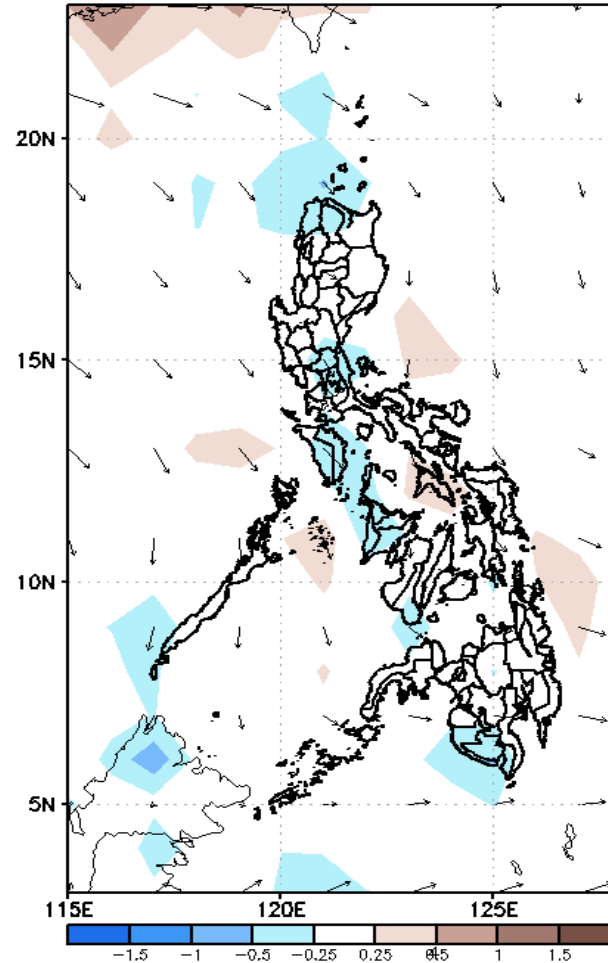
GEFS Week-2 Forecasts: Divergence & Wind Anomaly

Week 2: March 04-10, 2021

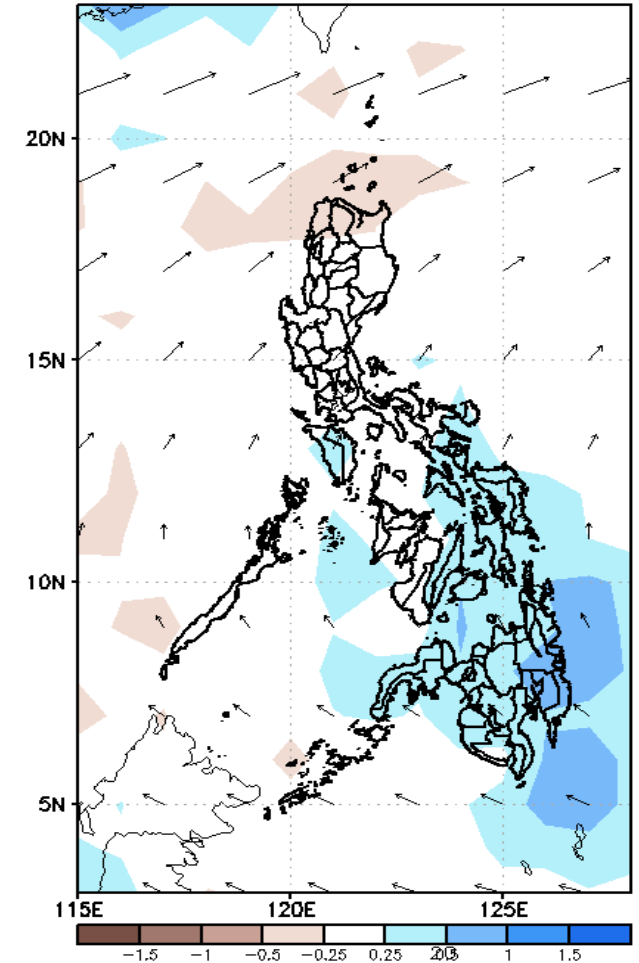
GEFS Week-2 850-hPa Divergence and Wind Anom
Valid: 20210304 - 20210310



GEFS Week-2 700-hPa Divergence and Wind Anom
Valid: 20210304 - 20210310



GEFS week-2 200-hPa Divergence and Wind Anom
Valid: 20210304 - 20210310

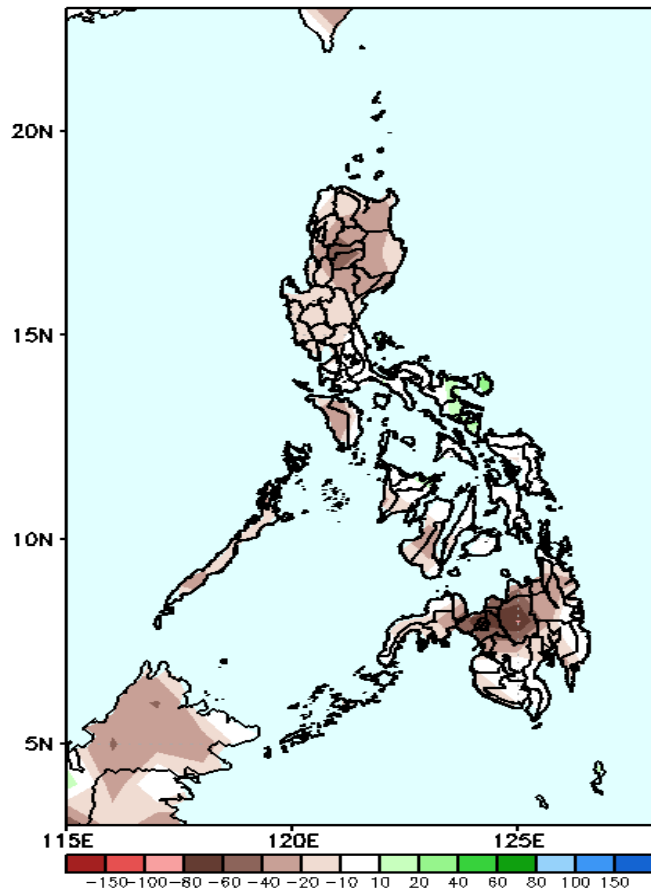


Upper and low level Divergence suggest likelihood of precipitation in Extreme Northern Luzon and most parts of Visayas and Mindanao. Northeast Monsoon affecting most parts of Luzon and eastern sections of Visayas and Mindanao during the forecast period.

Precipitation Anomaly and Exceedance Probability > 25/50 mm

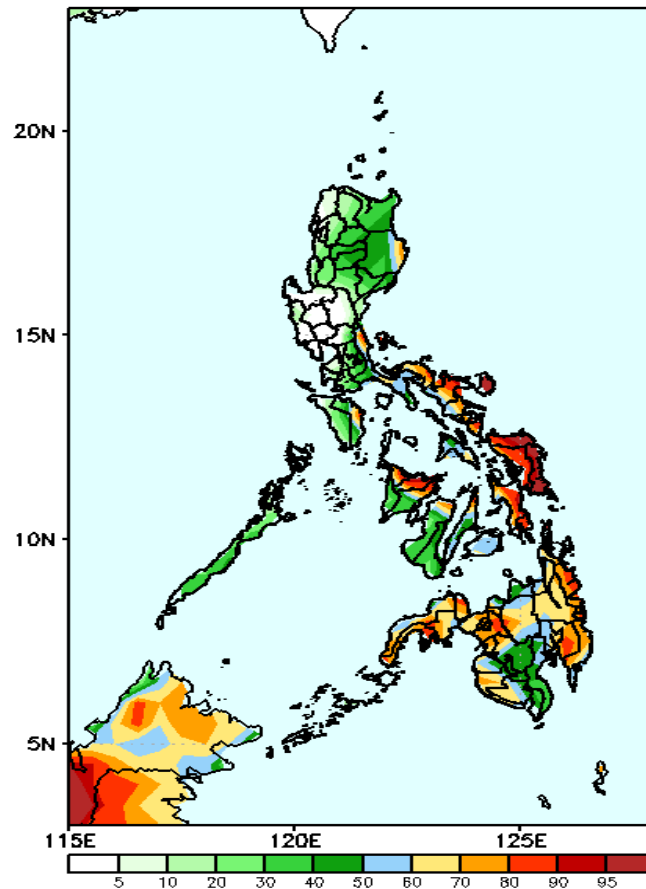
Week 2: March 04-10, 2021

GEFS Week-2 Precip Anomaly
Valid: 20210304 - 20210310



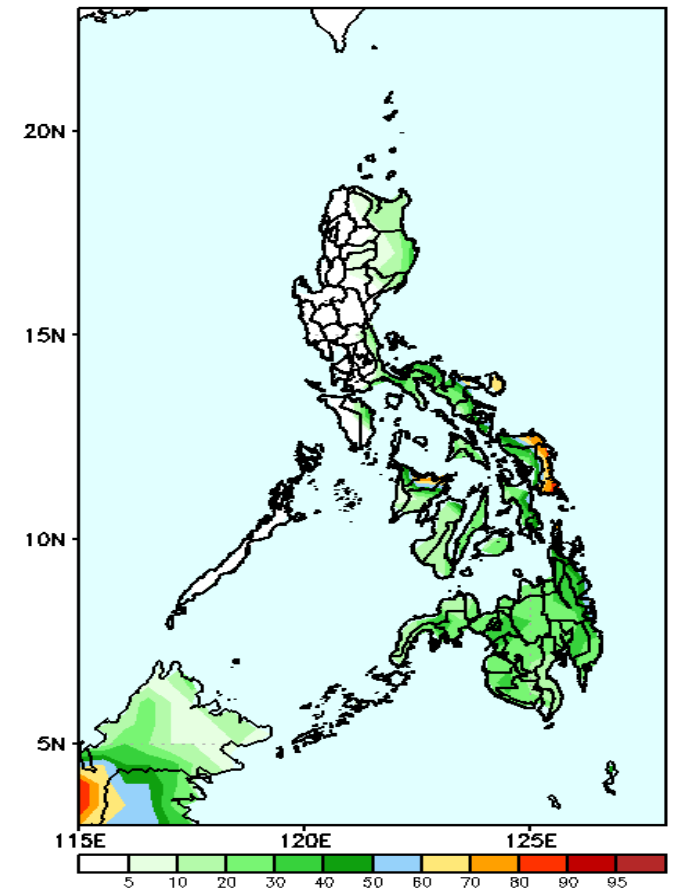
Rainfall deficit of 20-60mm in most parts of Luzon & Visayas and up to 100mm is expected in Mindanao.

GEFS Week-2 Exceedance Prob. > 25mm
Valid: 20210304 - 20210310



High probability of rainfall to exceed 25mm in eastern part of Isabela, most parts of Bicol region, Eastern Visayas Leyte provinces, Aklan, Capiz and most parts of Mindanao (except Davao Region) while less likely for the rest of the country Norte during the forecast period.

GEFS Week-2 Exceedance Prob. > 50mm
Valid: 20210304 - 20210310

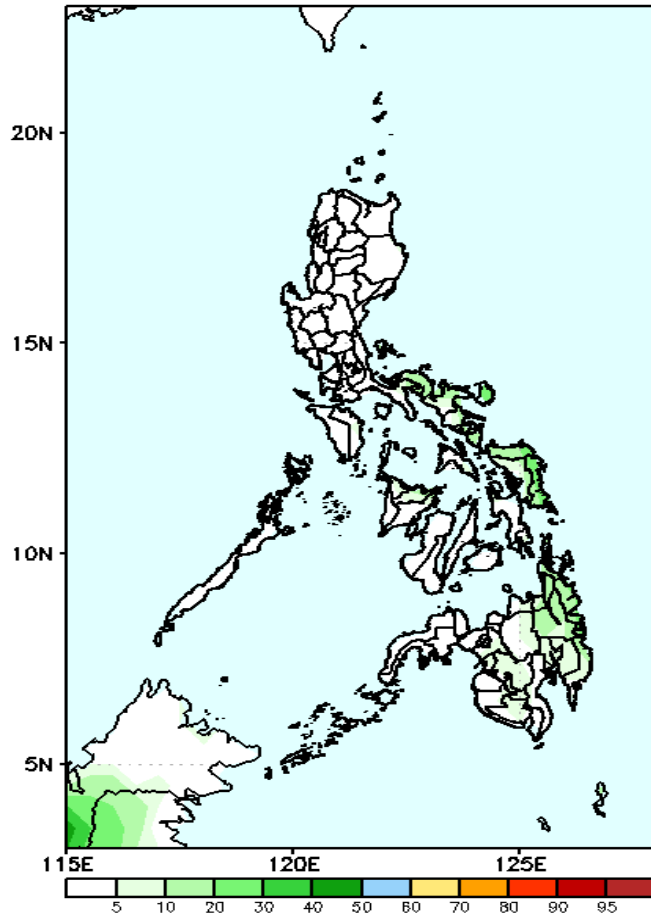


Less probability of rainfall to exceed 50mm in most parts of the country except in Catanduanes and Eastern Samar where there is 80-95% chance during the forecast period.

Exceedance Probability > 100/150/200 mm

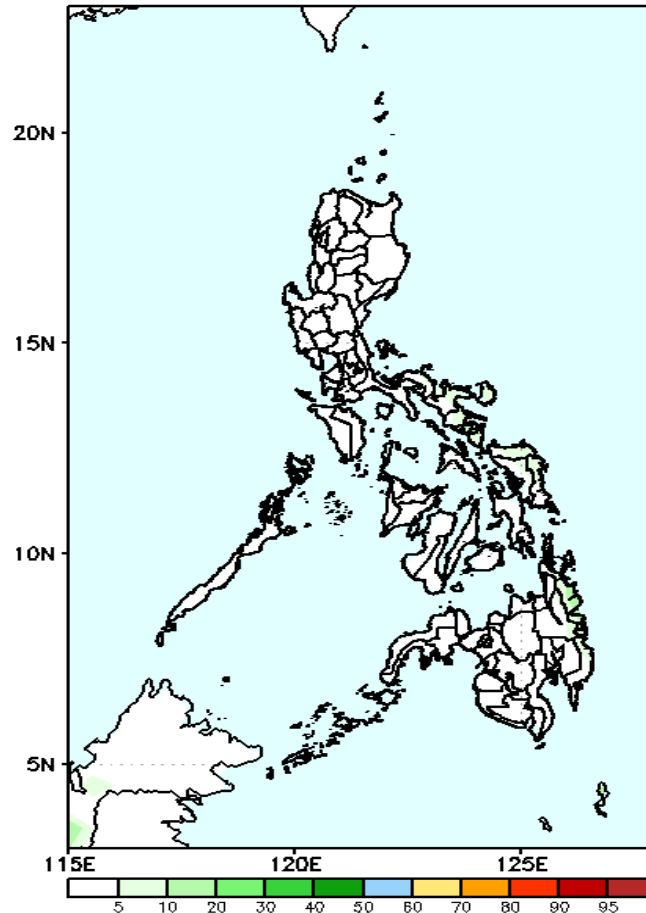
Week 2: March 04-10, 2021

GEFS Week-2 Exceedance Prob. > 100mm
Valid: 20210304 – 20210310



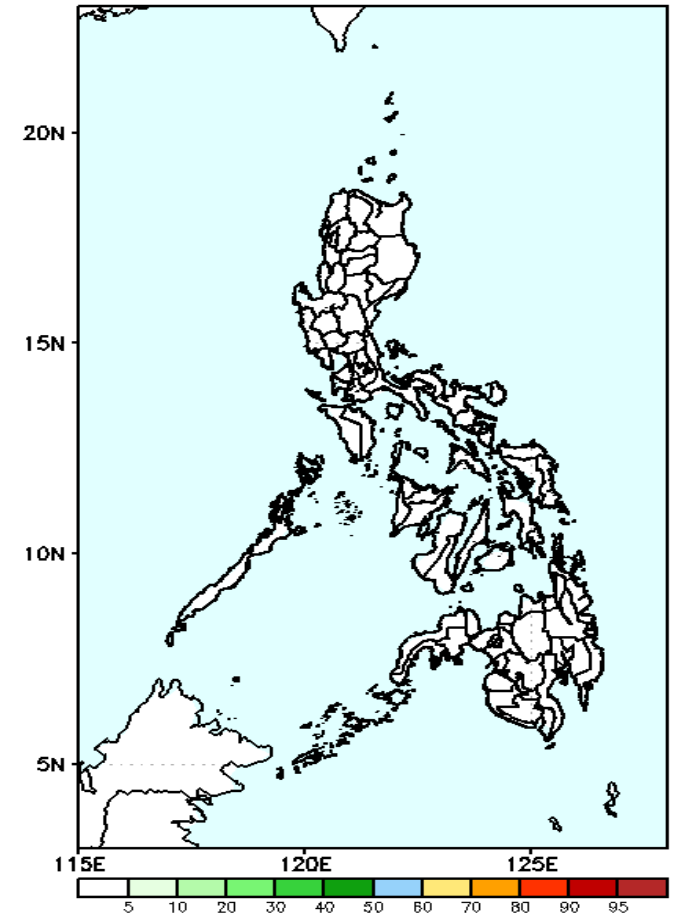
Less probability of rainfall to exceed 100mm in most parts of the country during the forecast period.

GEFS Week-2 Exceedance Prob. > 150mm
Valid: 20210304 – 20210310



Less probability of rainfall to exceed 150mm in most parts of the country during the forecast period.

GEFS Week-2 Exceedance Prob. > 200mm
Valid: 20210304 – 20210310

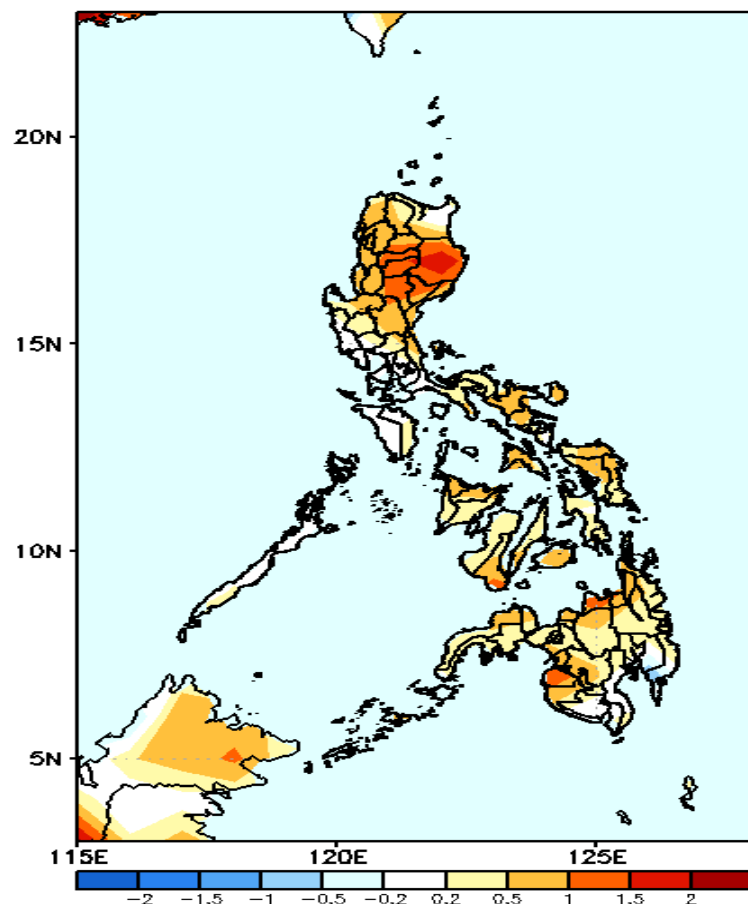


Less probability of rainfall to exceed 200mm in most parts of the country during the forecast period.



GEFS Week-1 & 2 Forecasts: T2m Anomaly

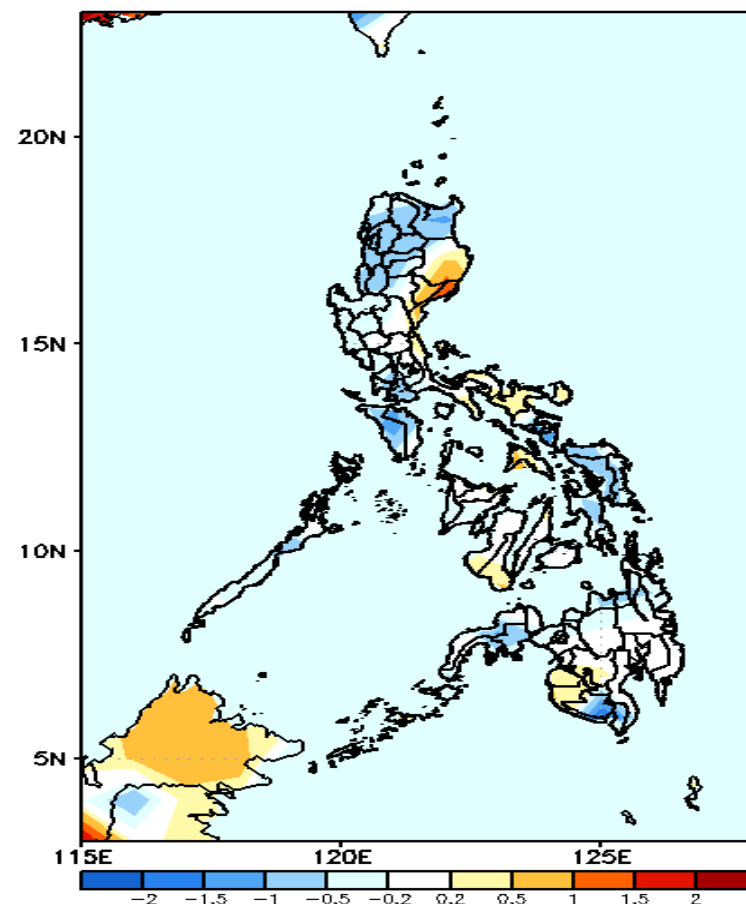
GEFS Week-1 T2m Anomaly
Valid: 20210225 – 20210303



2m Temperature Week 1: Feb 25- Mar 03, 2021

Slightly warmer to warmer than average surface air temperature is expected in most parts of the country during the forecast period.

GEFS Week-2 T2m Anomaly
Valid: 20210304 – 20210310



2m Temperature Week 2: March 04-10, 2021

Average to slightly warmer than average surface air temperature is expected in Isabela, Quirino, Aurora and Bicol Region while average to slightly cooler than average temperature for the rest of the country during the forecast period.