



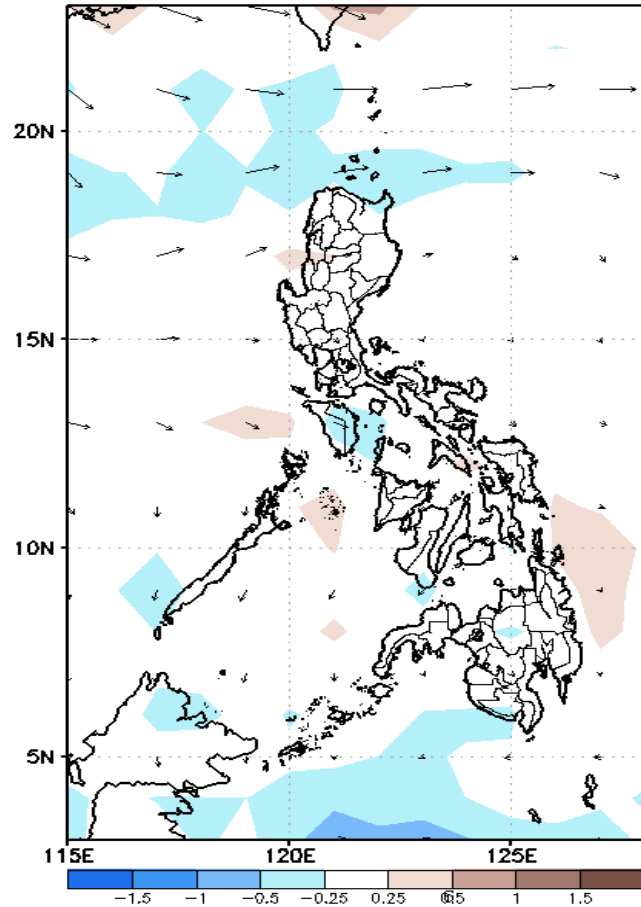
Week 1 & Week 2 Forecast for the Philippines using GEFS Model



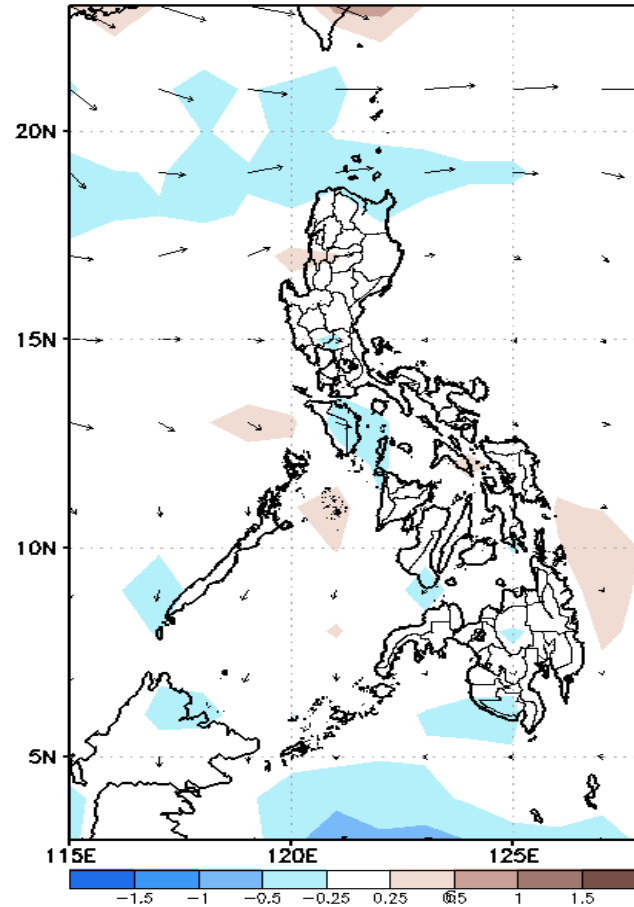
GEFS Week-1 Forecasts: Divergence & Wind Anomaly

Week 1: March 25-31, 2021

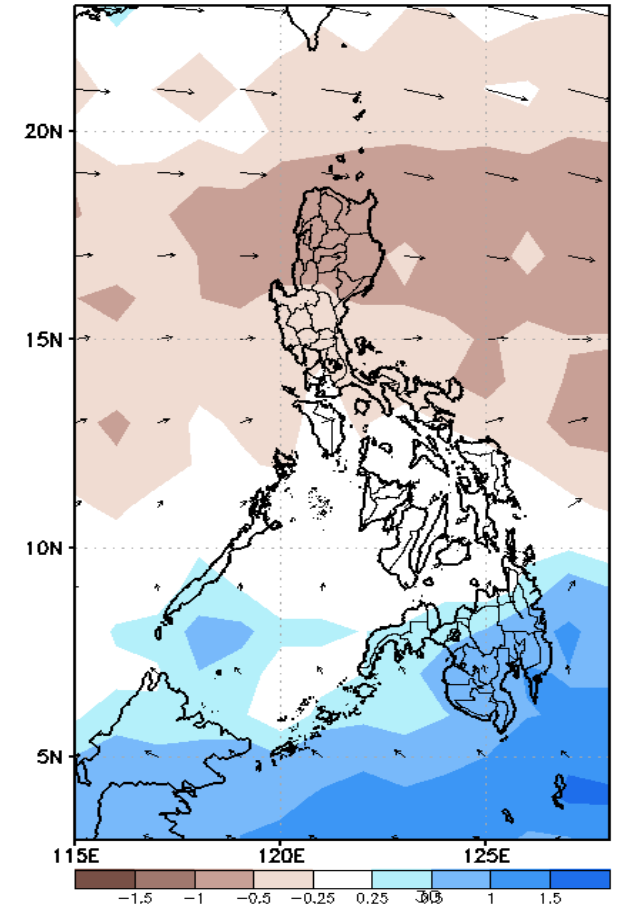
GEFS Week-1 850-hPa Divergence and Wind Anomr
Valid: 20210325 - 20210331



GEFS Week-1 700-hPa Divergence and Wind Anomr
Valid: 20210325 - 20210331



GEFS Week-1 200-hPa Divergence and Wind Anomr
Valid: 20210325 - 20210331

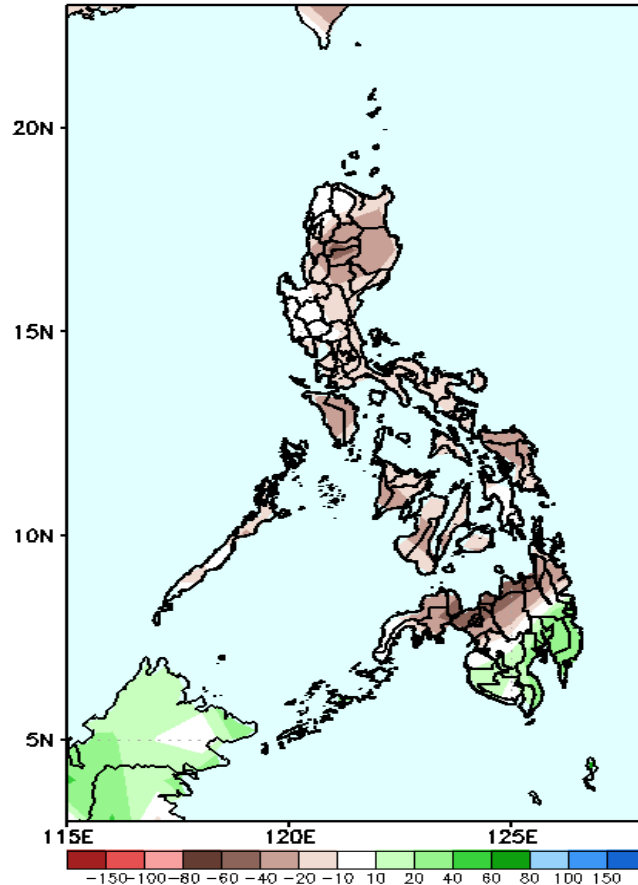


Upper and low level Divergence suggest likelihood of precipitation in Mindanao. Easterlies affecting most parts of the country during the forecast period.

Precipitation Anomaly and Exceedance Probability > 25/50 mm

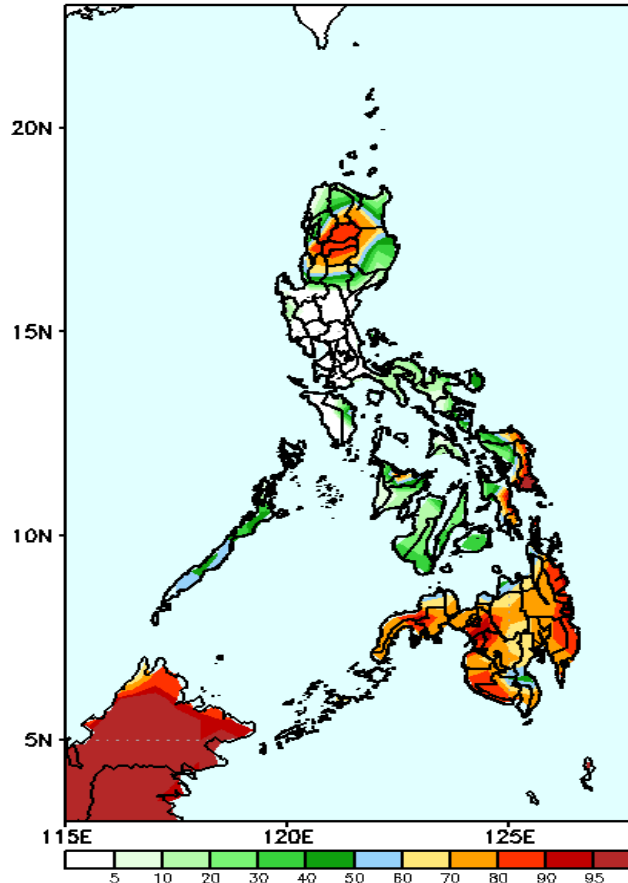
Week 1: March 25-31, 2021

GEFS Week-1 Precip Anomaly
Valid: 20210325 - 20210331



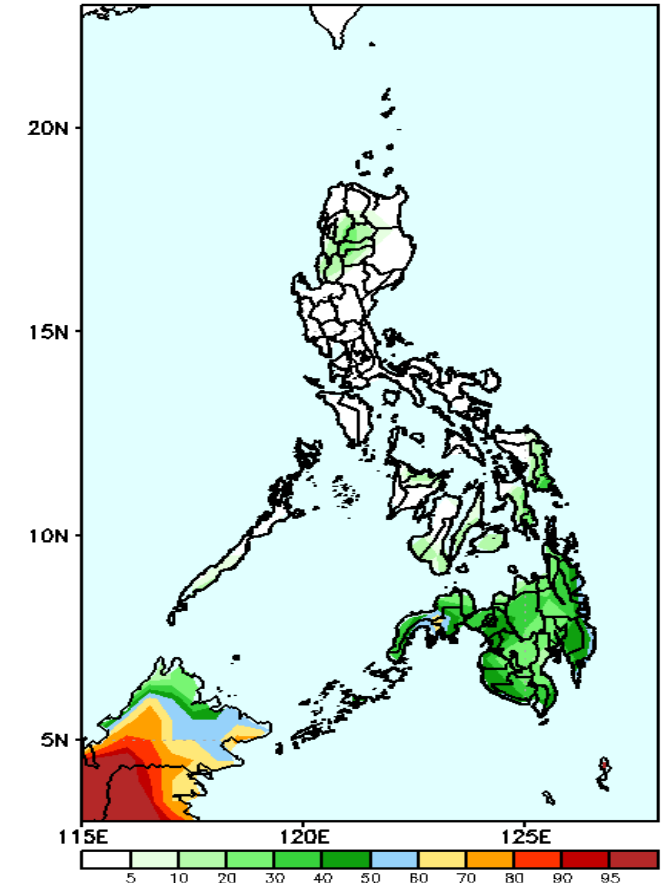
Rainfall deficit of up to 80mm is expected in most parts of the country except in Bicol region where increase of rainfall of up to 70mm is more likely.

GEFS Week-1 Exceedance Prob. > 25mm
Valid: 20210325 - 20210331



High probability of rainfall to exceed 25mm in most parts of CAR, western parts of Cagayan & Isabela, La Union, Eastern Samar and most parts of Mindanao while less likely for the rest of the country during the forecast period.

GEFS Week-1 Exceedance Prob. > 50mm
Valid: 20210325 - 20210331

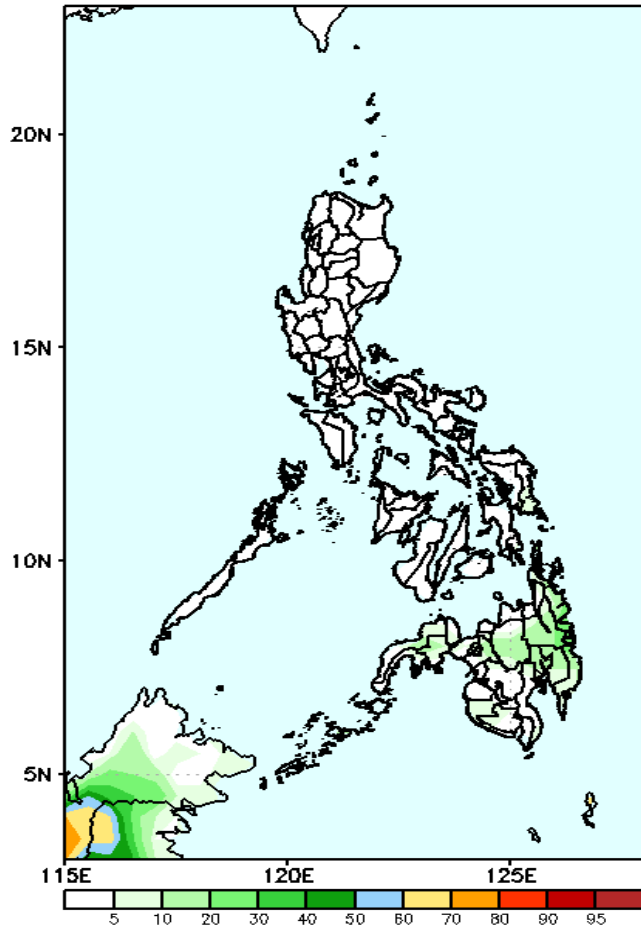


Less probability of rainfall to exceed 50mm in most parts of the country during the forecast period.

Exceedance Probability > 100/150/200 mm

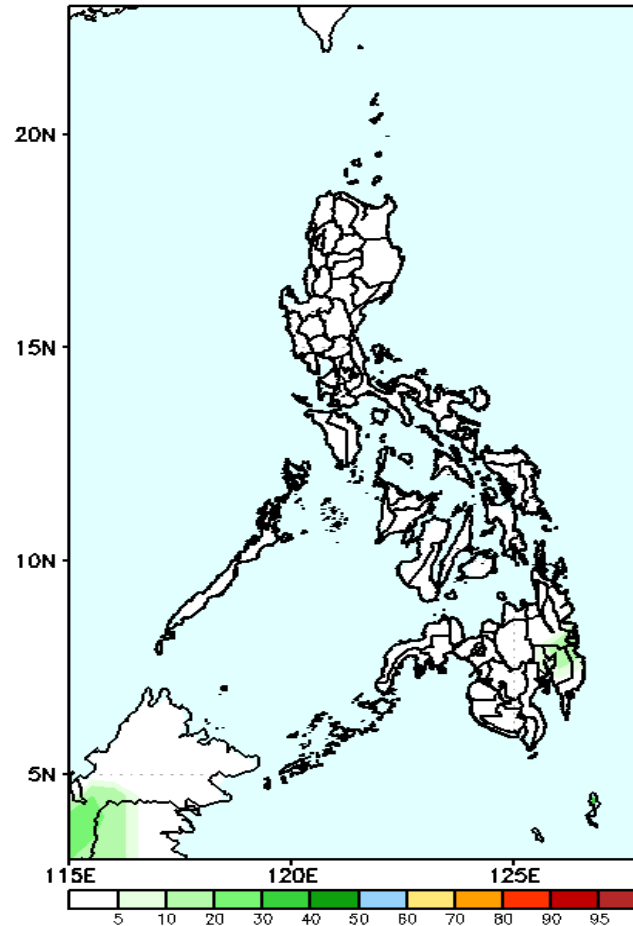
Week 1: March 25-31, 2021

GEFS Week-1 Exceedance Prob. > 100mm
Valid: 20210325 - 20210331



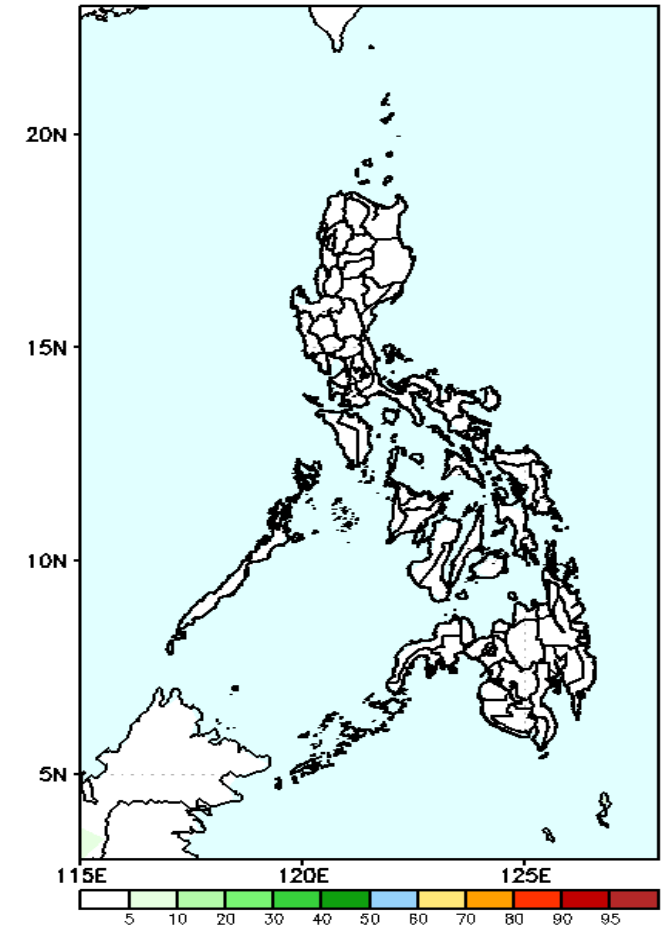
Less probability of rainfall to exceed 100mm in most parts of the country during the forecast period.

GEFS Week-1 Exceedance Prob. > 150mm
Valid: 20210325 - 20210331



Less probability of rainfall to exceed 150mm in most parts of the country during the forecast period.

GEFS Week-1 Exceedance Prob. > 200mm
Valid: 20210325 - 20210331



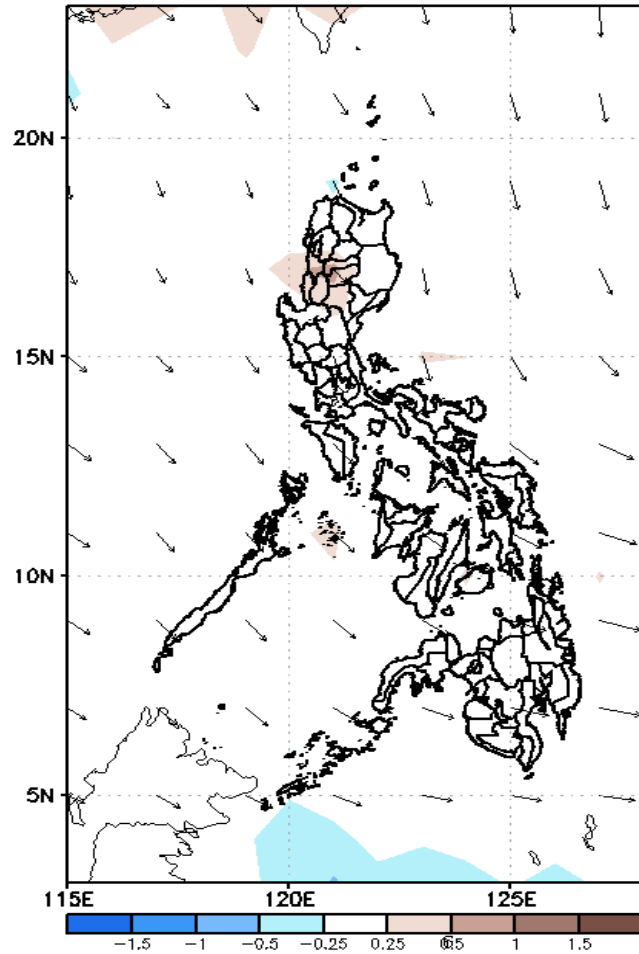
Less probability of rainfall to exceed 200mm in most parts of the country during the forecast period.



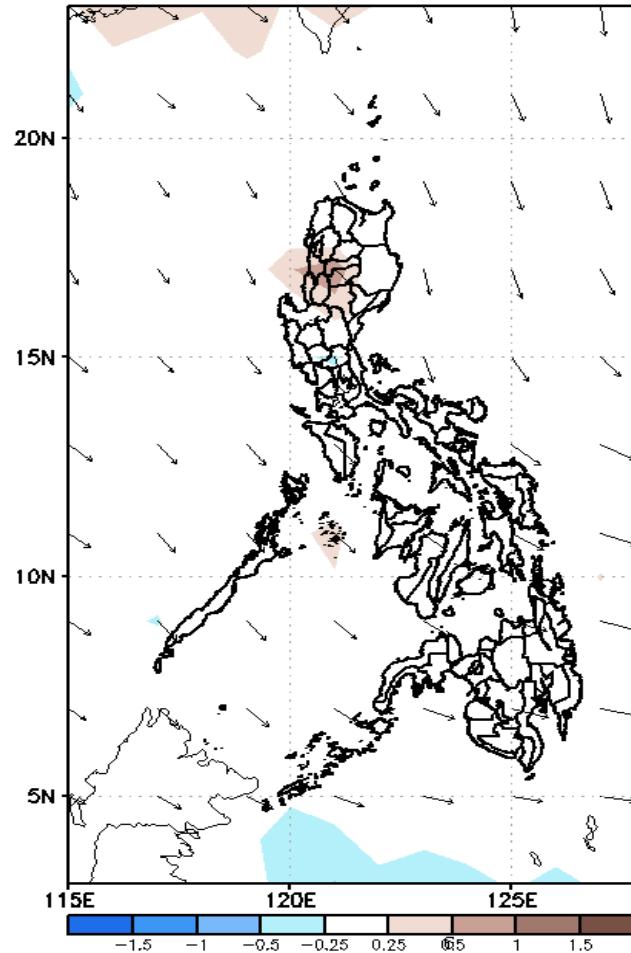
GEFS Week-2 Forecasts: Divergence & Wind Anomaly

Week 2: April 01-07, 2021

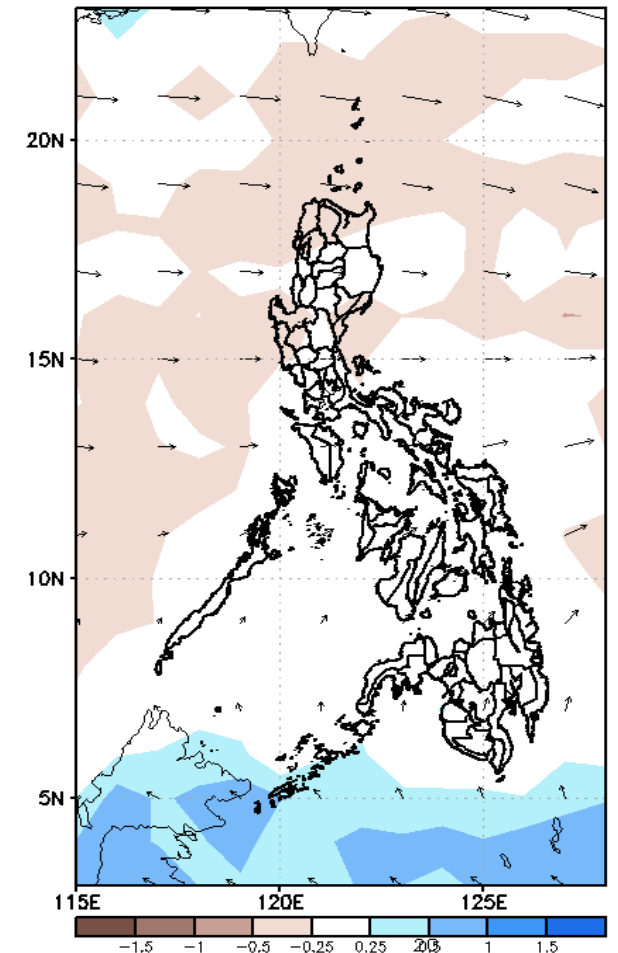
GEFS Week-2 850-hPa Divergence and Wind Anom
Valid: 20210401 - 20210407



GEFS Week-2 700-hPa Divergence and Wind Anom
Valid: 20210401 - 20210407



GEFS week-2 200-hPa Divergence and Wind Anom
Valid: 20210401 - 20210407

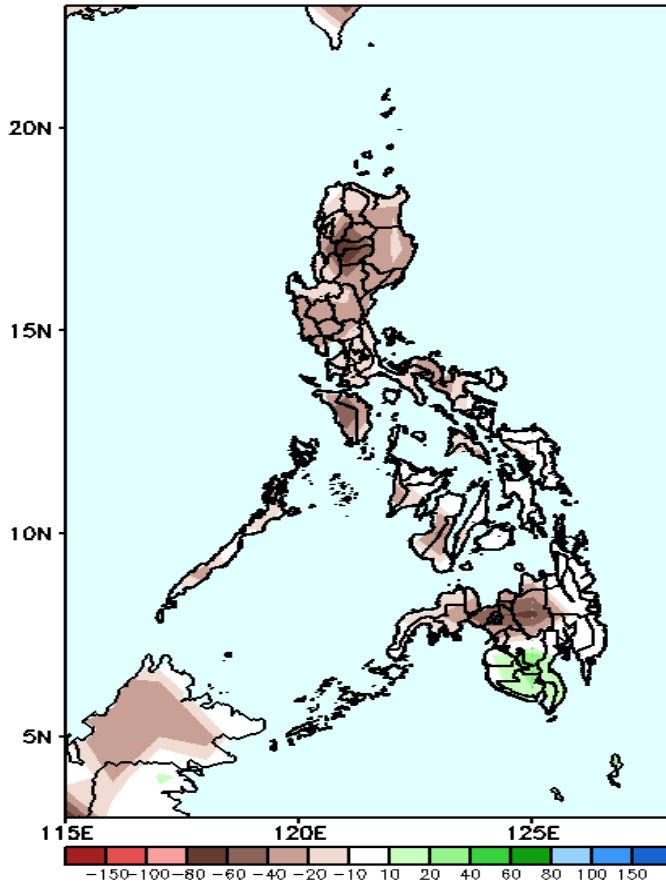


Upper and low level Divergence suggest less likelihood of precipitation in most parts of the country. Easterlies affecting most parts of the country during the forecast period.

Precipitation Anomaly and Exceedance Probability > 25/50 mm

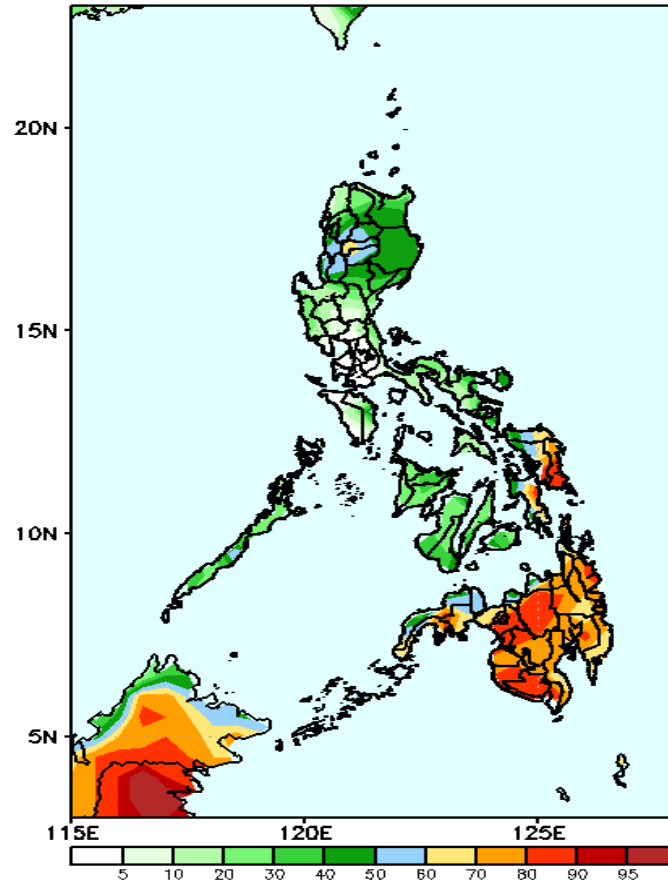
Week 2: April 01-07, 2021

GEFS Week-2 Precip. Anomaly
Valid: 20210401 – 20210407



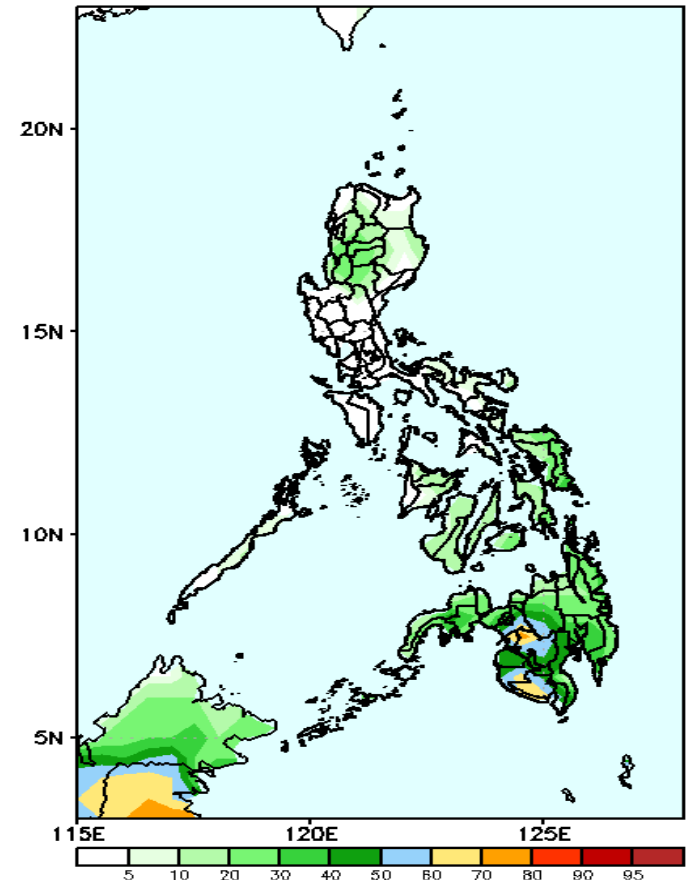
Rainfall deficit of up to 80mm is expected in most parts of the country except in southwestern Mindanao where increase of rainfall up to 50mm is more likely during the forecast period.

GEFS Week-2 Exceedance Prob. > 25mm
Valid: 20210401 – 20210407



High probability of rainfall to exceed 25mm in Samar provinces, Leyte, and most parts of Mindanao while less likely for the rest of the country during the forecast period.

GEFS Week-2 Exceedance Prob. > 50mm
Valid: 20210401 – 20210407

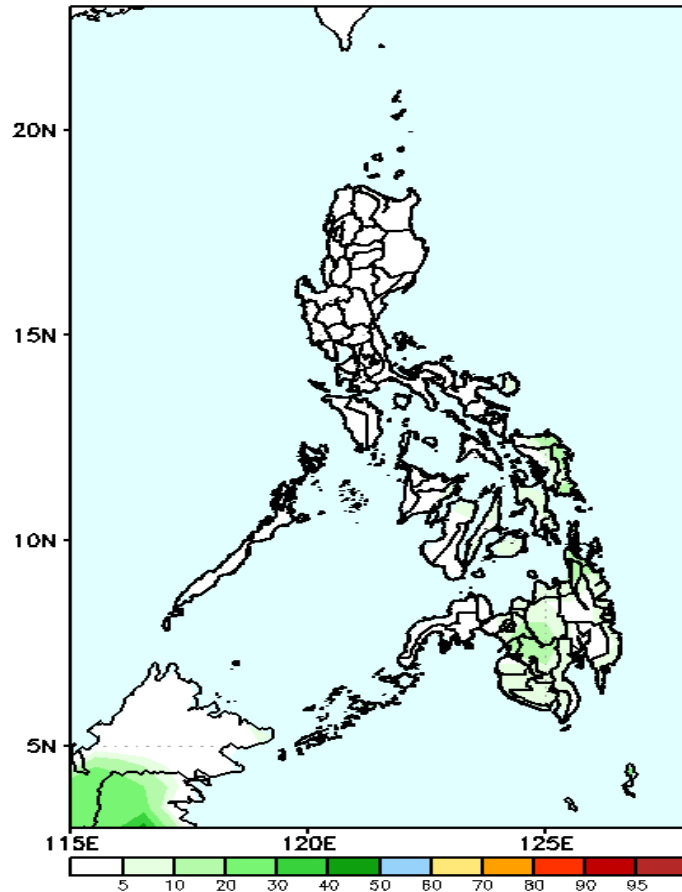


Less probability of rainfall to exceed 50mm in most parts of the country except in North Cotabato & Sarangani with 60-80% chance during the forecast period.

Exceedance Probability > 100/150/200 mm

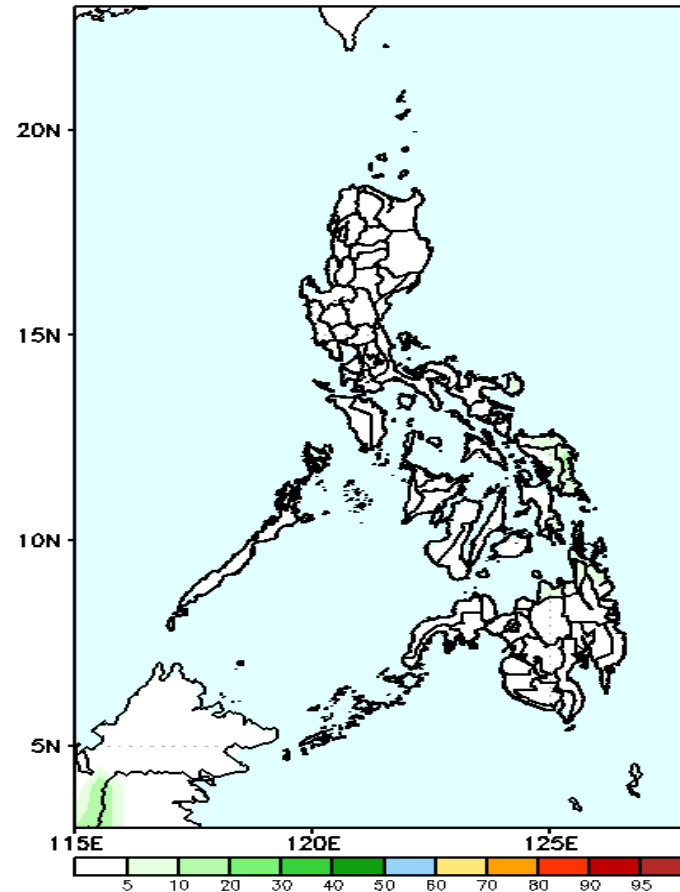
Week 2: April 01-07, 2021

GEFS Week-2 Exceedance Prob. > 100mm
Valid: 20210401 – 20210407



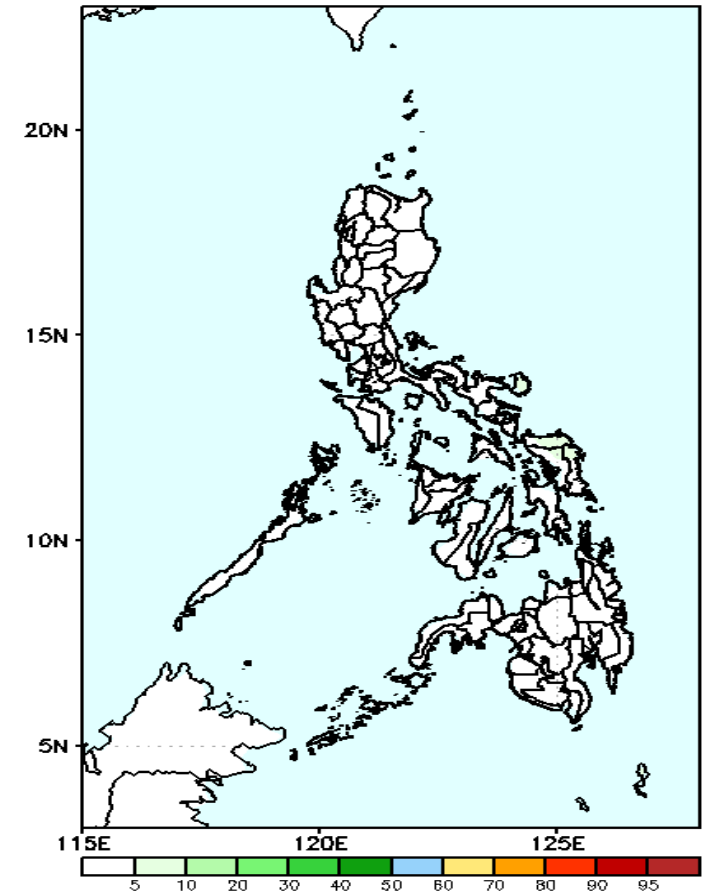
Less probability of rainfall to exceed 100mm in most parts of the country during the forecast period.

GEFS Week-2 Exceedance Prob. > 150mm
Valid: 20210401 – 20210407



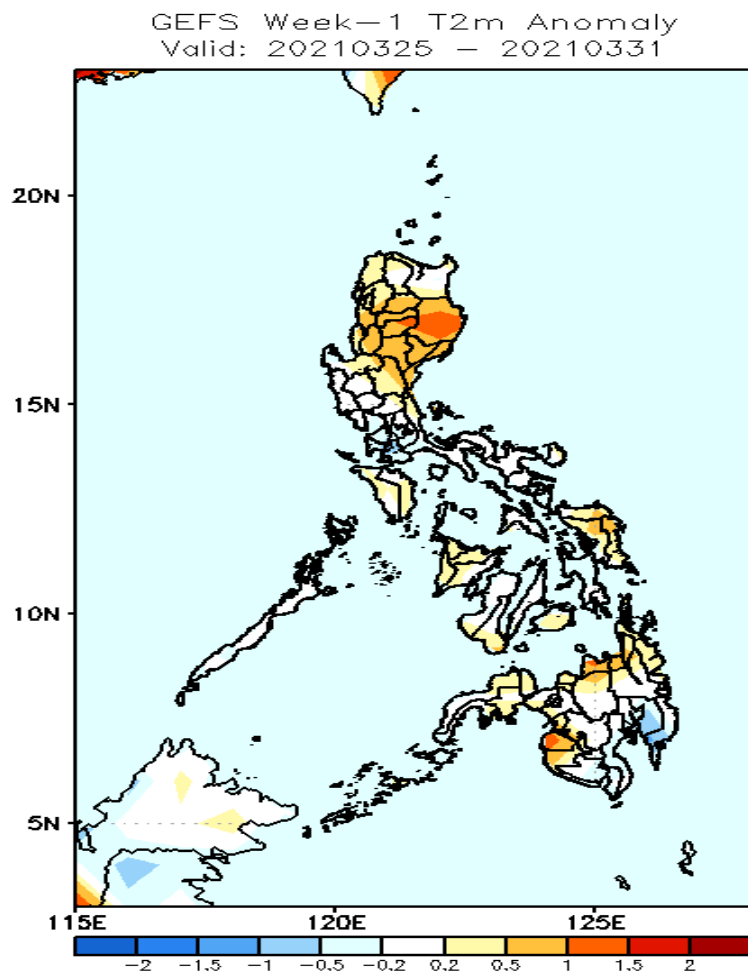
Less probability of rainfall to exceed 150mm in most parts of the country during the forecast period.

GEFS Week-2 Exceedance Prob. > 200mm
Valid: 20210401 – 20210407



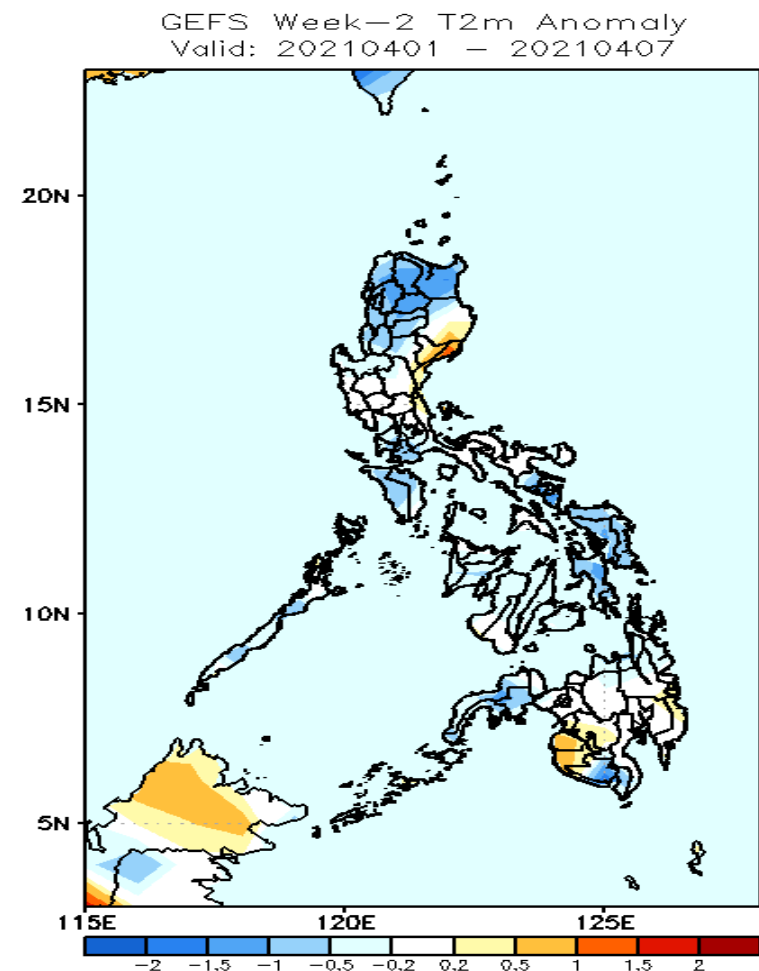
Less probability of rainfall to exceed 200mm in most parts of the country during the forecast period.

GEFS Week-1 & 2 Forecasts: T2m Anomaly



2m Temperature Week 1: March 25-31, 2021

Warmer than average surface air temperatures will likely experience in Isabela & Mt. Province while average to slightly warmer air temperatures for the rest of the country during the forecast period.



2m Temperature Week 2: April 01-07, 2021

Cooler than average surface air temperature will likely experience in most parts of northern Luzon, Mindoro, southern part of Bicol Region, Samar & Leyte Provinces and Zamboanga Peninsula while average to slightly warmer for the rest of the country during the forecast period.