



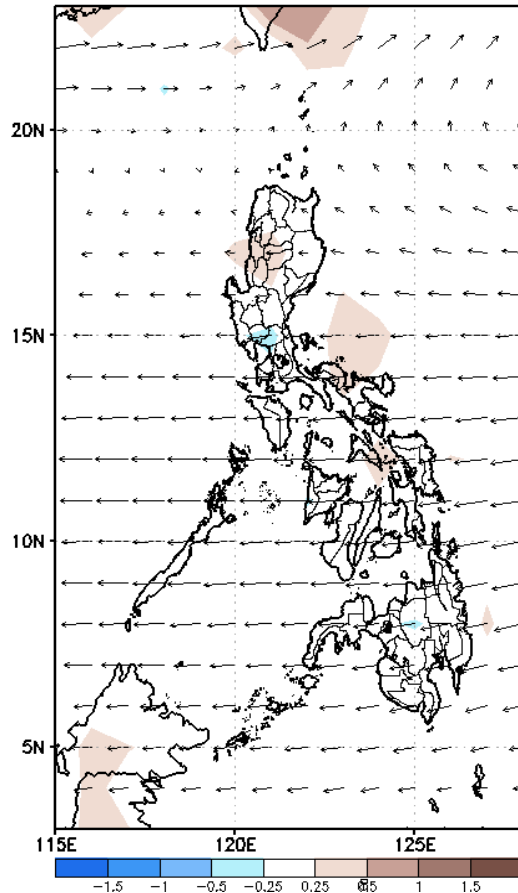
Week 1 & Week 2 Forecast for the Philippines using GEFS Model



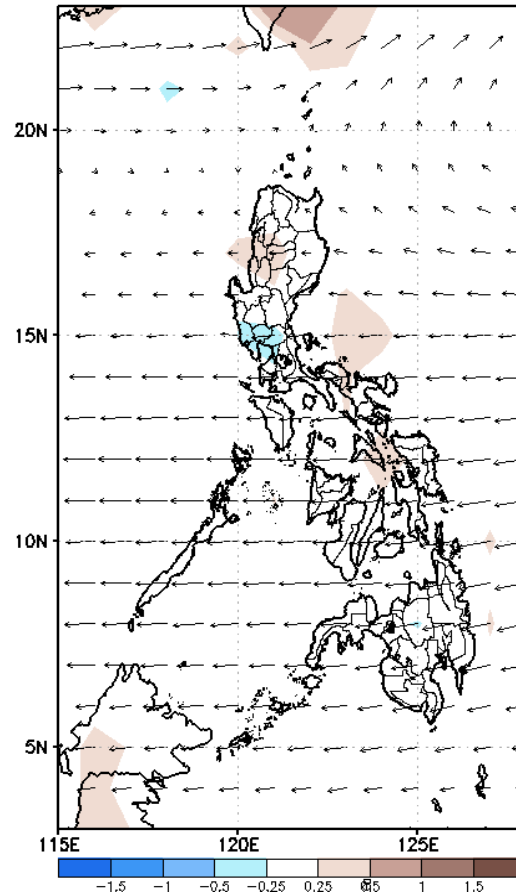
GEFS Week-1 Forecasts: Wind Anomaly Forecast

Week 1: Apr 26 – May 02, 2023

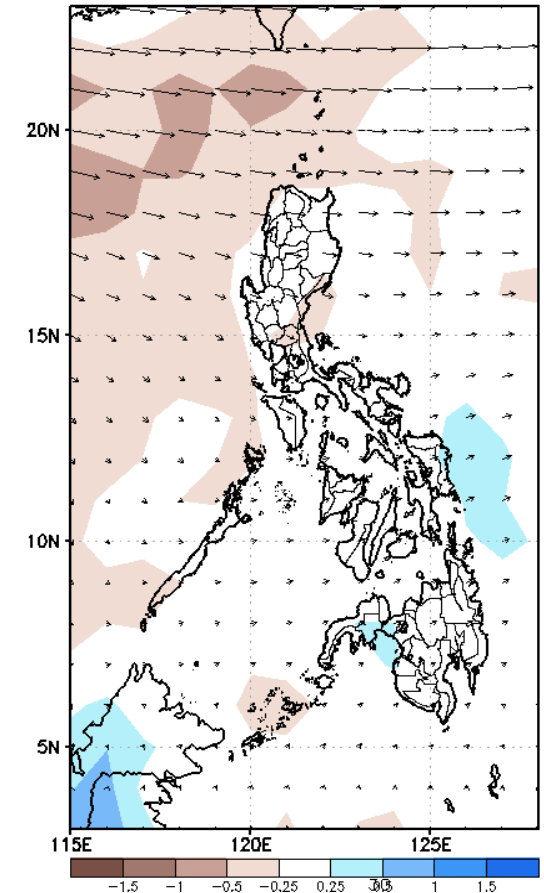
GEFS Week-1 850-hPa Divergence and Wind Anomaly
Valid: 20230426 – 20230502



GEFS Week-1 700-hPa Divergence and Wind Anomaly
Valid: 20230426 – 20230502

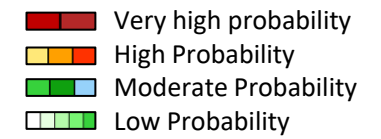


GEFS Week-1 200-hPa Divergence and Wind Anomaly
Valid: 20230426 – 20230502



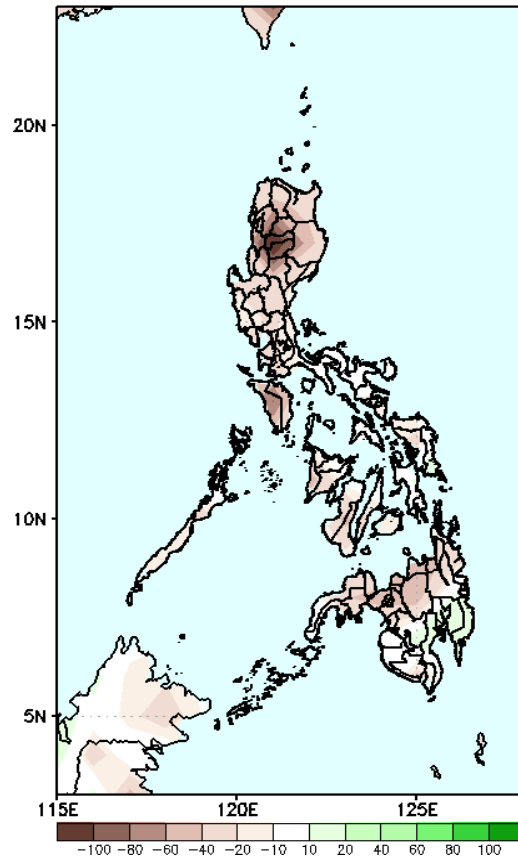
Easterlies is forecasted to affect most parts of the country; expect dry and hot weather during the forecast period.

Precipitation Anomaly and Exceedance Probability > 25/50 mm



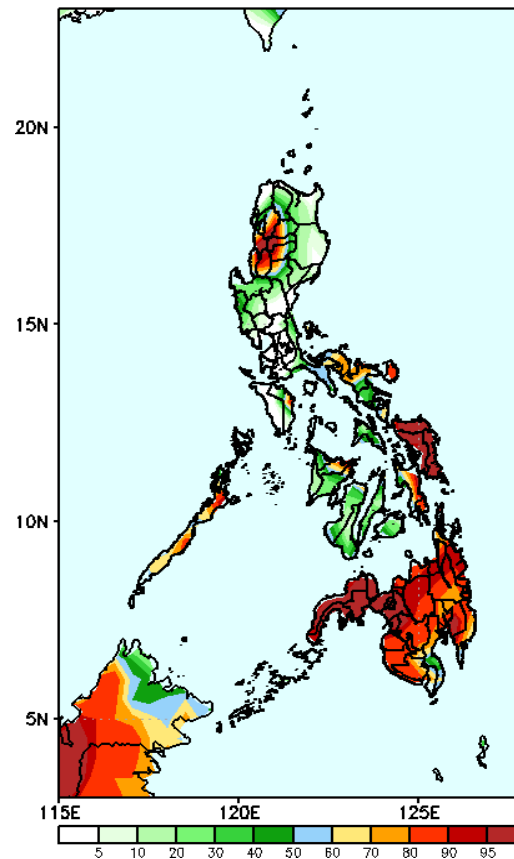
Week 1: Apr 26 – May 02, 2023

GEFS Week-1 Precip Anomaly
Valid: 20230426 – 20230502



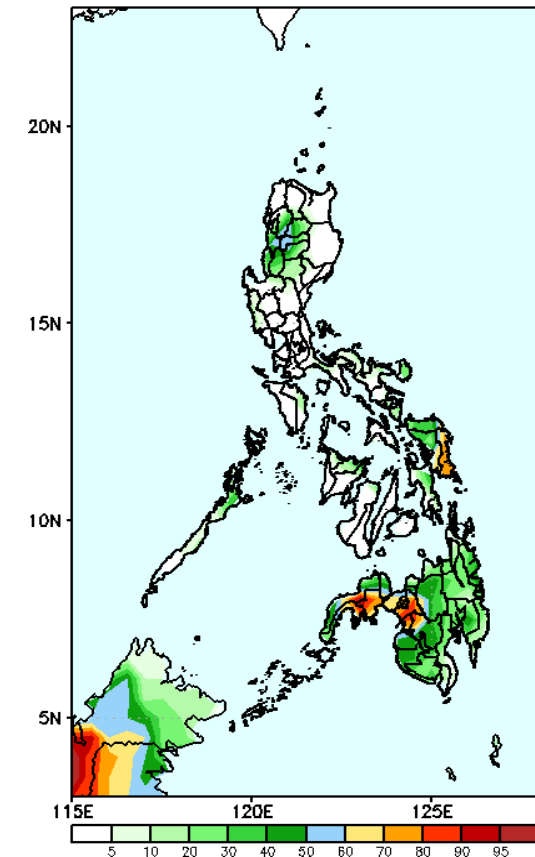
Rainfall deficit of more than 100mm is expected in Kalinga, Mt. Province & Ifugao and 40-80mm in most parts of the country except in some areas in most parts of the country during the forecast period.

GEFS Week-1 Exceedance Prob. > 25mm
Valid: 20230426 – 20230502



High to a very high probability to exceed 25mm of rainfall in Mindanao, Eastern Visayas and CAR; moderate to high probability in Bicol region, La Union, Palawan and Capiz while low to moderate likelihood over the rest of the country.

GEFS Week-1 Exceedance Prob. > 50mm
Valid: 20230426 – 20230502



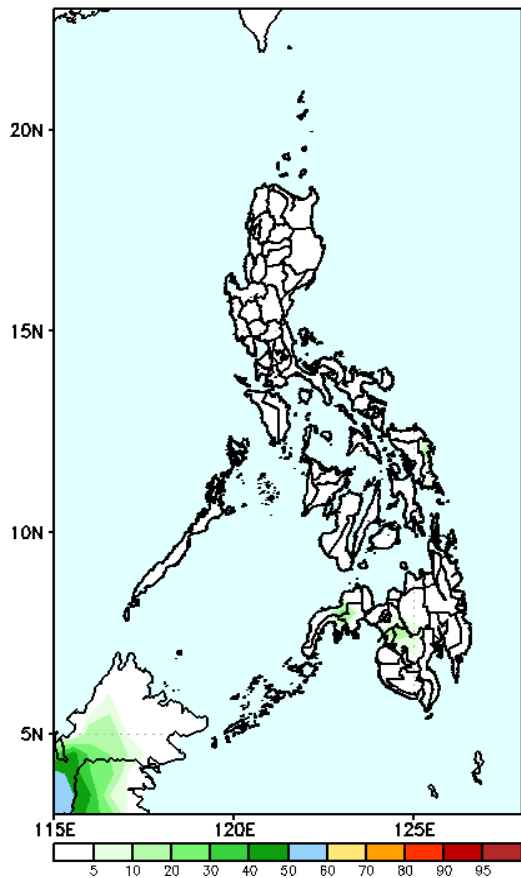
Moderate to High probability to exceed 50mm of rainfall in Samar provinces, Lanao provinces and some parts of Zamboanga peninsula while low likelihood over the rest of the country.

Exceedance Probability > 100/150/200 mm

Week 1: Apr 26 – May 02, 2023

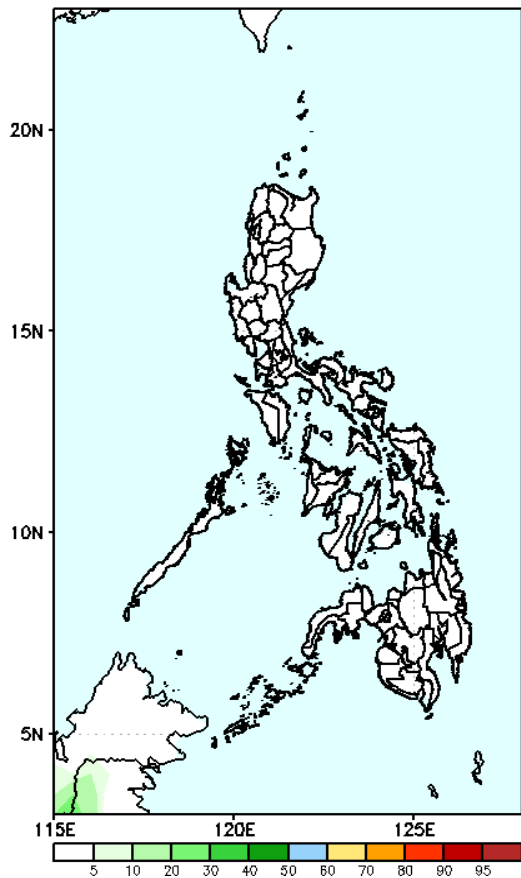
- Very high probability
- High Probability
- Moderate Probability
- Low Probability

GEFS Week-1 Exceedance Prob. > 100mm
Valid: 20230426 – 20230502



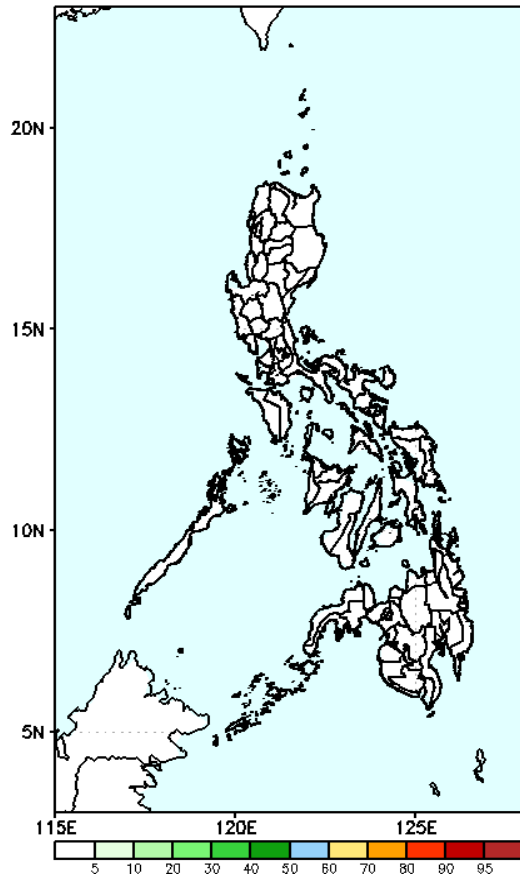
Low probability of rainfall to exceed 100mm in most parts of the country during the forecast period.

GEFS Week-1 Exceedance Prob. > 150mm
Valid: 20230426 – 20230502



Low probability of rainfall to exceed 150mm in most parts of the country during the forecast period.

GEFS Week-1 Exceedance Prob. > 200mm
Valid: 20230426 – 20230502

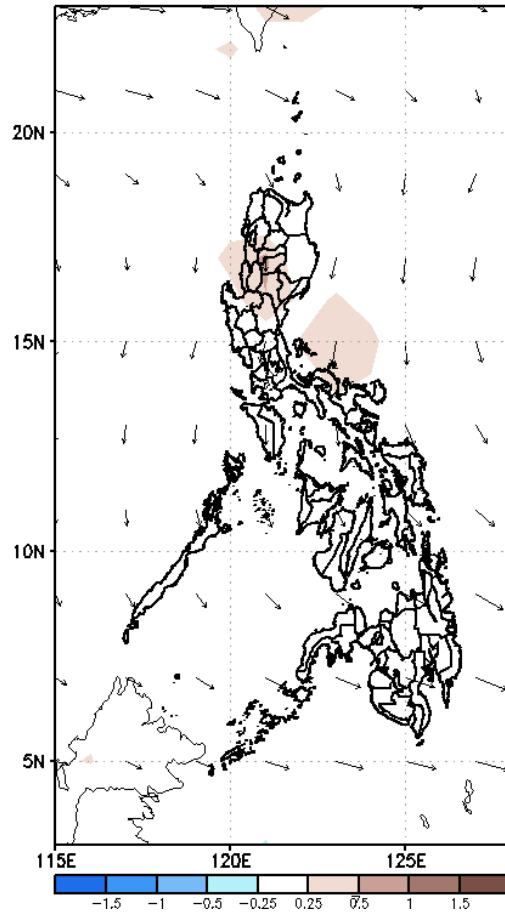


Low probability of rainfall to exceed 200mm in most parts of the country during the forecast period.

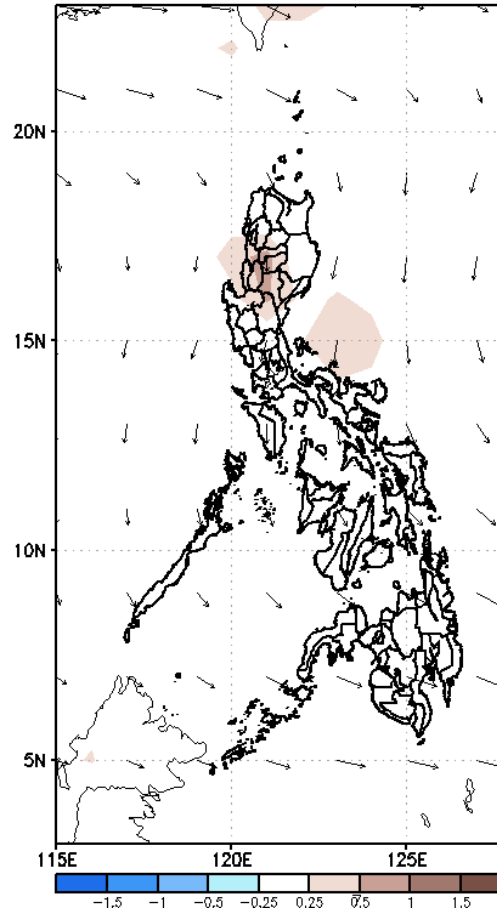
GEFS Week-2 Forecasts: Wind Anomaly Forecast

Week 2: May 03 - 09, 2023

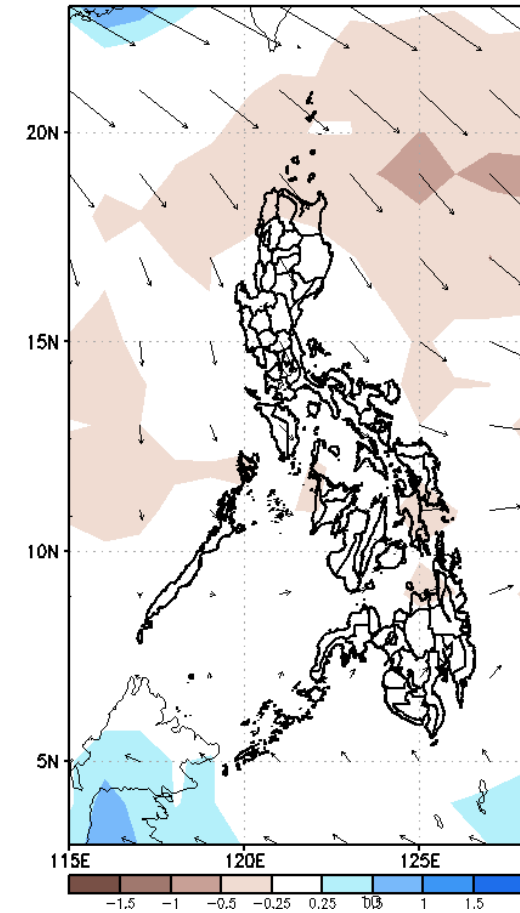
GEFS Week-2 850-hPa Divergence and Wind Anomaly
Valid: 20230503 - 20230509



GEFS Week-2 700-hPa Divergence and Wind Anomaly
Valid: 20230503 - 20230509

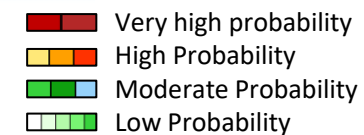


GEFS week-2 200-hPa Divergence and Wind Anomaly
Valid: 20230503 - 20230509



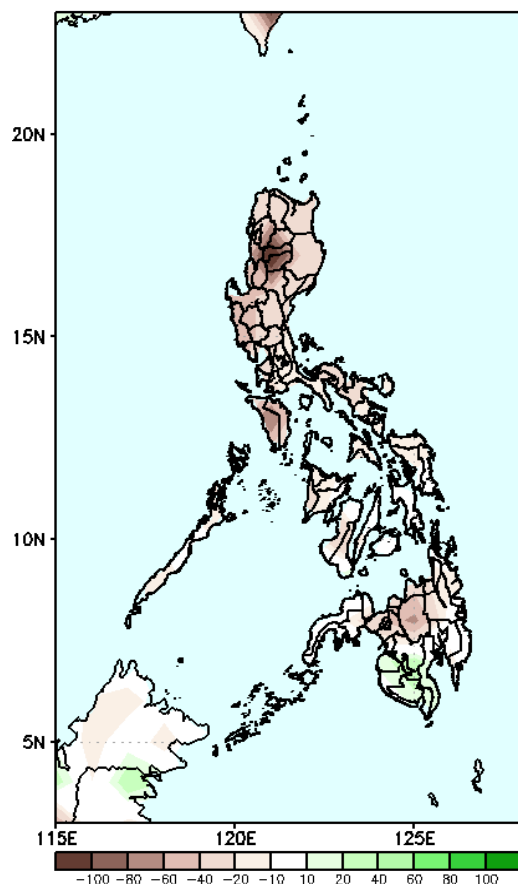
Easterlies is forecasted to affect most parts of the country; expect dry and hot weather during the forecast period.

Precipitation Anomaly and Exceedance Probability > 25/50 mm



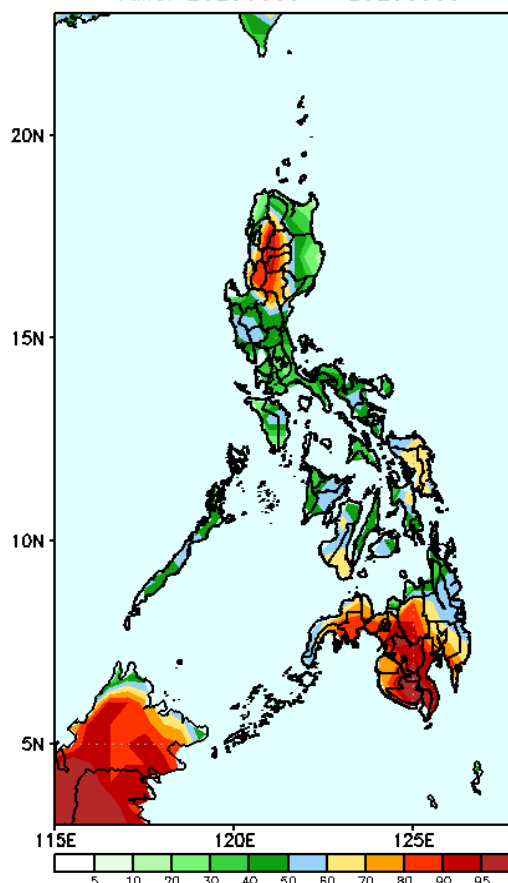
Week 2: May 03 - 09, 2023

GEFS Week-2 Precip Anomaly
Valid: 20230503 - 20230509



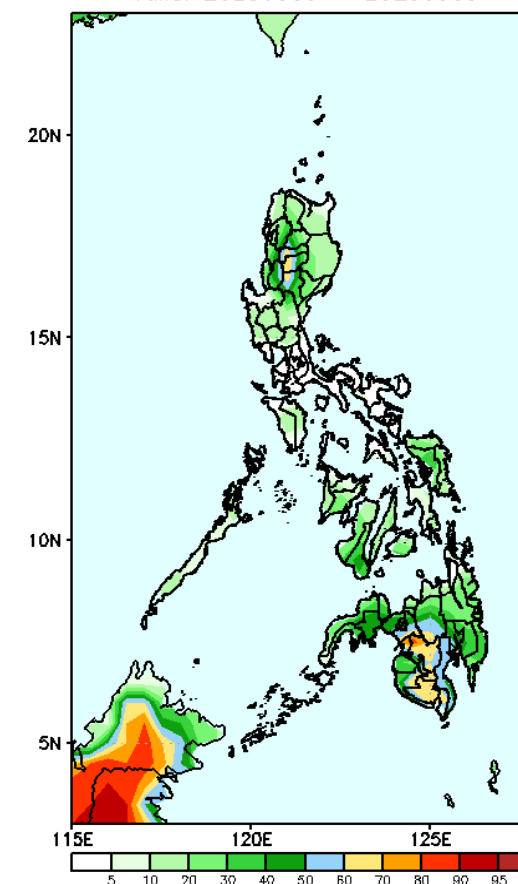
Rainfall deficit of more than 100mm is expected in Mt. Province & Ifugao, 40-80mm in most parts of the country except in some areas in SOCCSKARGEN where there is 20-40mm increase of rainfall during the forecast period.

GEFS Week-2 Exceedance Prob. > 25mm
Valid: 20230503 - 20230509



High to a very high probability to exceed 25mm of rainfall in Mindanao, most parts of CAR; moderate to high probability in Nueva Vizcaya and most parts of Western and Eastern Visayas while low to moderate likelihood over the rest of the country..

GEFS Week-2 Exceedance Prob. > 50mm
Valid: 20230503 - 20230509



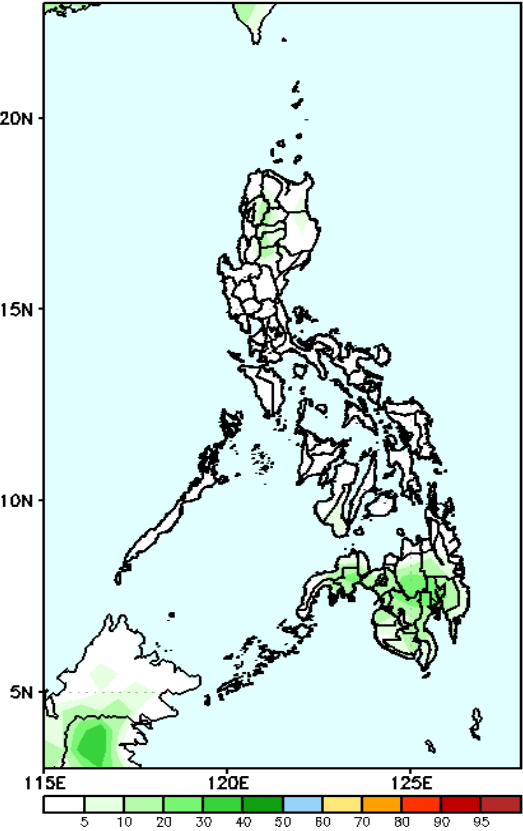
Moderate to High probability to exceed 50mm of rainfall in some parts of western and central Mindanao while low likelihood over the rest of the country.



Exceedance Probability > 100/150/200 mm

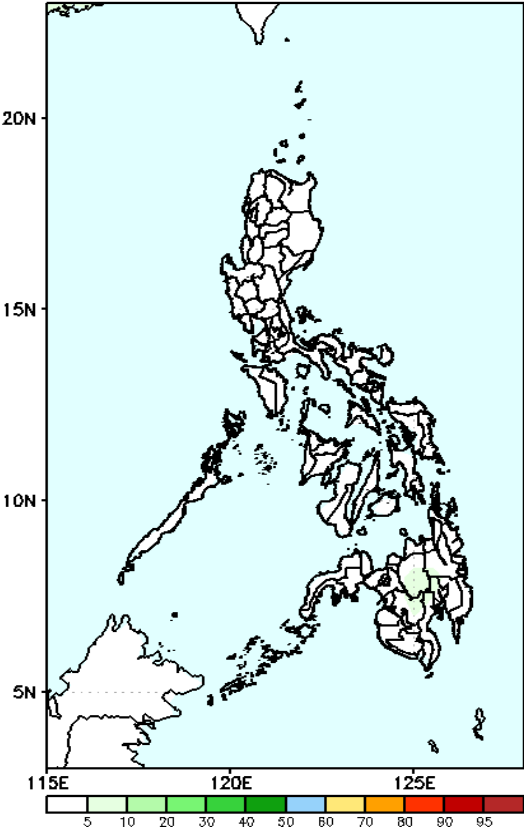
Week 2: May 03 - 09, 2023

GEFS Week-2 Exceedance Prob. > 100mm
Valid: 20230503 - 20230509



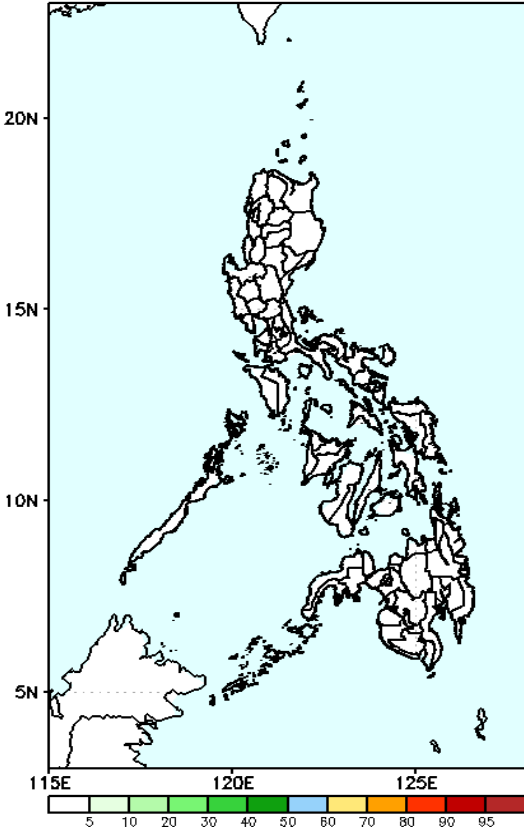
Low probability of rainfall to exceed 100mm in most parts of the country during the forecast period.

GEFS Week-2 Exceedance Prob. > 150mm
Valid: 20230503 - 20230509



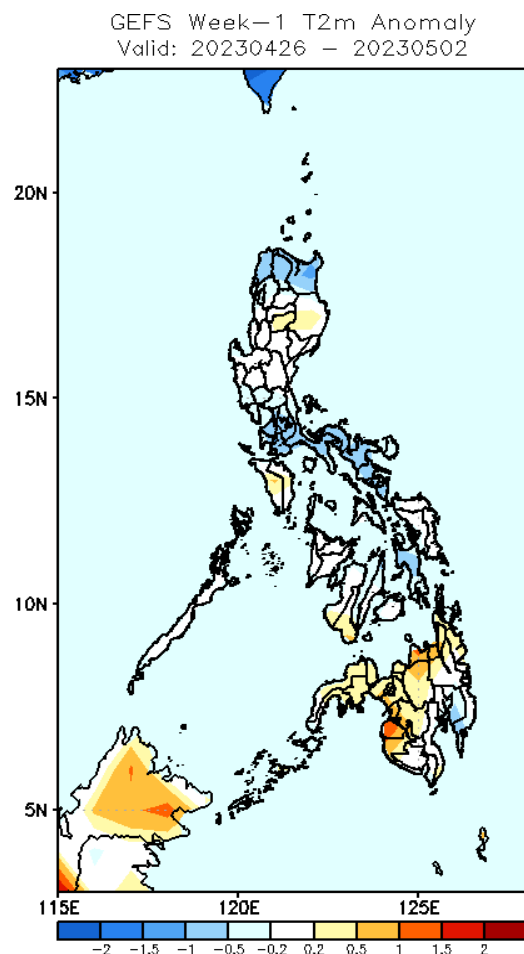
Low probability of rainfall to exceed 150mm in most parts of the country during the forecast period.

GEFS Week-2 Exceedance Prob. > 200mm
Valid: 20230503 - 20230509



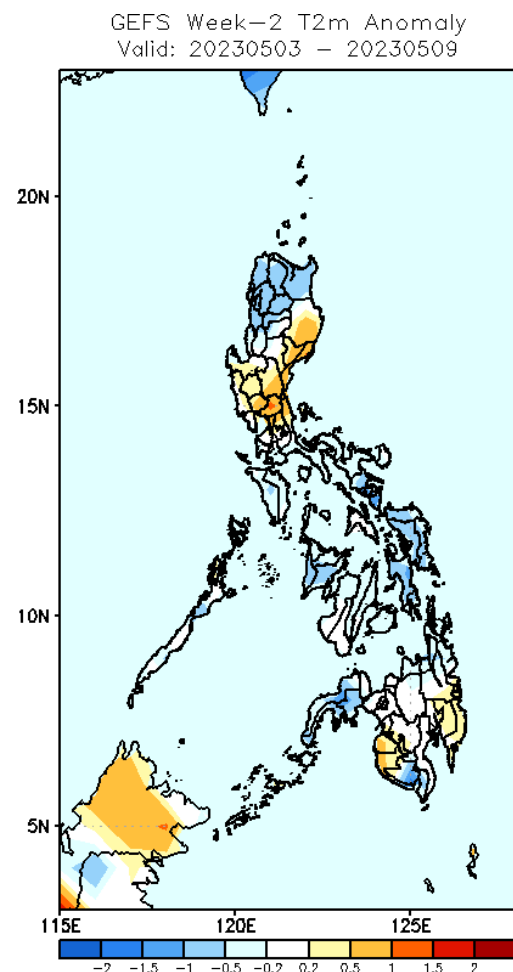
Low probability of rainfall to exceed 200mm in most parts of the country during the forecast period.

GEFS Week-1 & 2 Forecasts: T2m Anomaly



2m Temperature Week 1: Apr 26 – May 02, 2023

Average to cooler than average surface air temperature anomaly will likely experience in most parts of Luzon and Visayas while slightly warmer than average temperature anomaly will be likely in most parts of Mindanao, Isabela and Mindoro during the forecast period.



2m Temperature Week 2: May 03-09, 2023

Average to cooler than average surface air temperature anomaly will likely experience in most parts of northern and southern Luzon, Visayas and most parts of Mindanao while slightly warmer than average temperature anomaly will be likely in Isabela, Pangasinan, Quirino, Central Luzon, Davao