



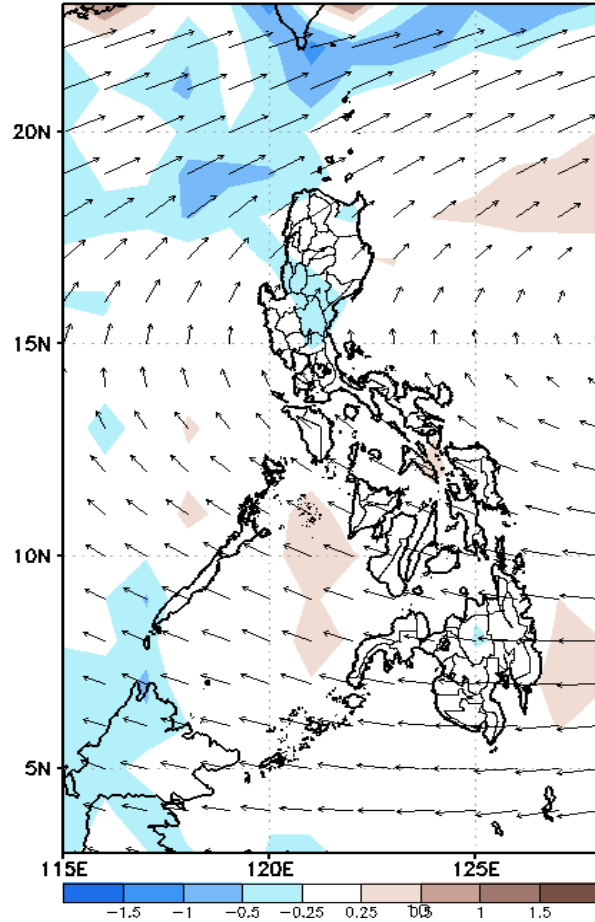
Week 1 & Week 2 Forecast for the Philippines using GEFS Model



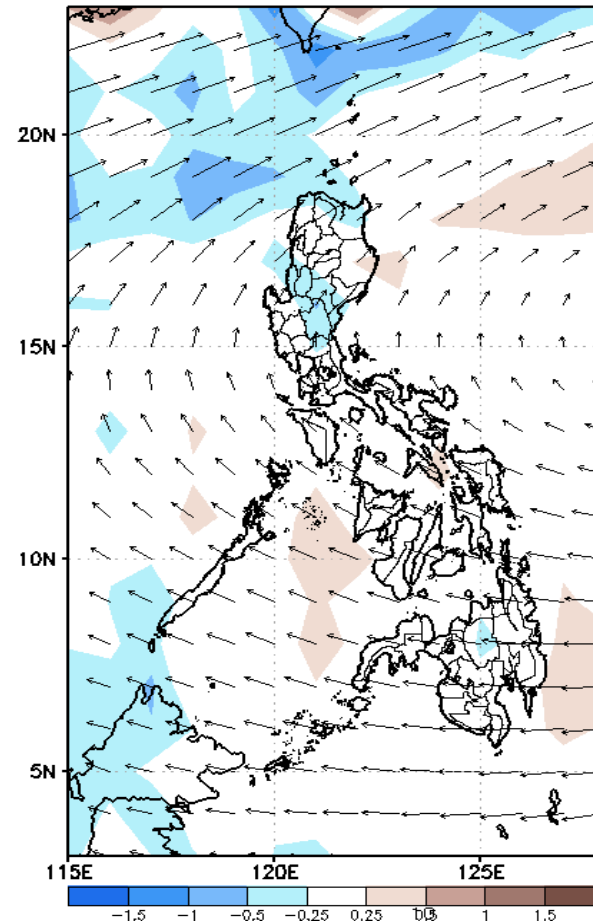
GEFS Week-1 Forecasts: Divergence & Wind Anomaly

Week 1: Jan 26-Feb 01, 2022

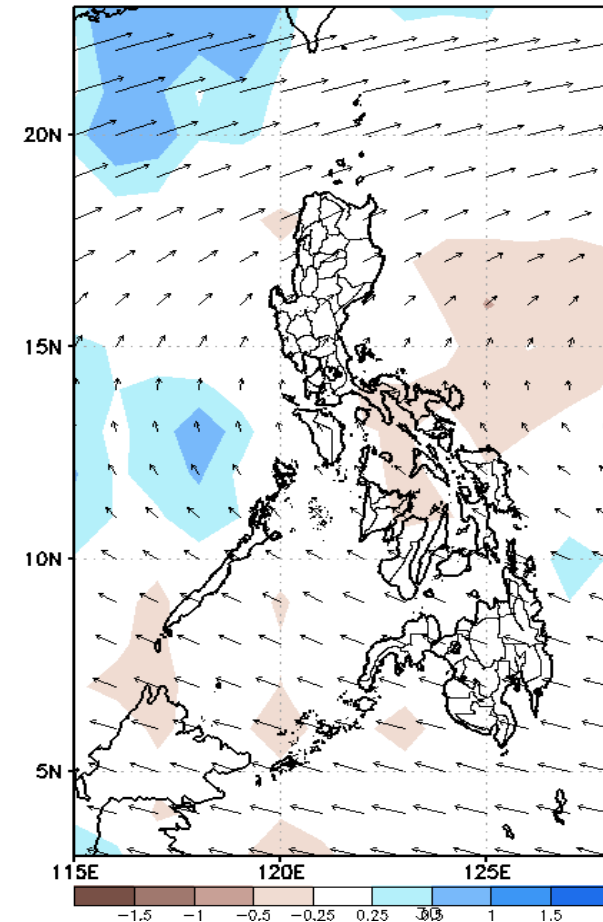
GEFS Week-1 850-hPa Divergence and Wind Anom
Valid: 20220126 - 20220201



GEFS Week-1 700-hPa Divergence and Wind Anom
Valid: 20220126 - 20220201



GEFS Week-1 200-hPa Divergence and Wind Anom
Valid: 20220126 - 20220201

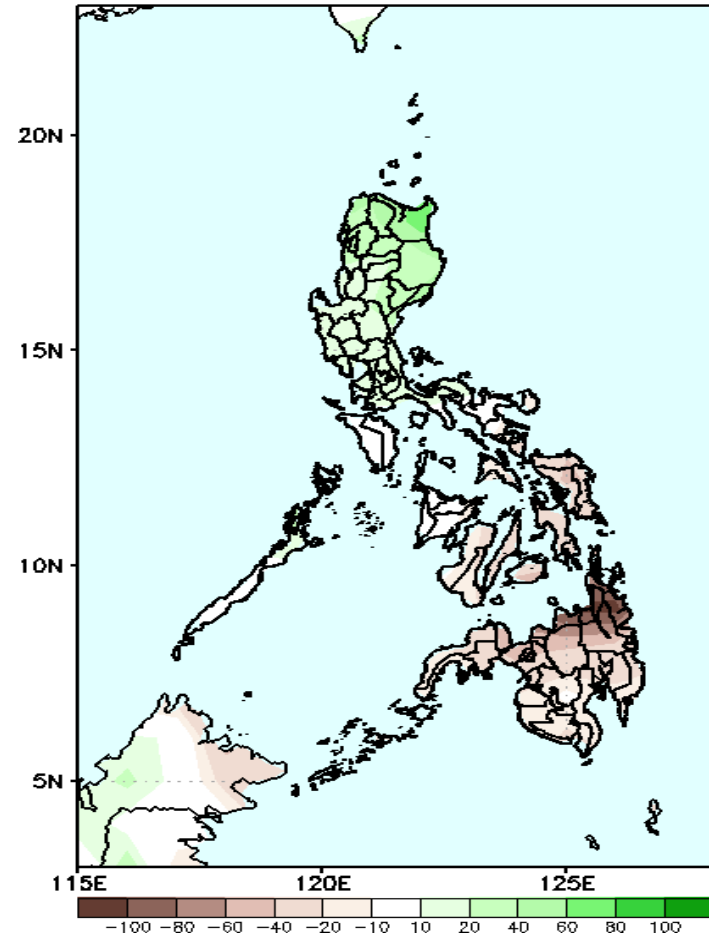


Upper and low level Divergence suggest a likelihood of light to moderate precipitation in Bicol region and most parts of Visayas and Mindanao. Northeast Monsoon affecting Northern Luzon while Easterlies affecting the rest of the country during the forecast period.

Precipitation Anomaly and Exceedance Probability > 25/50 mm

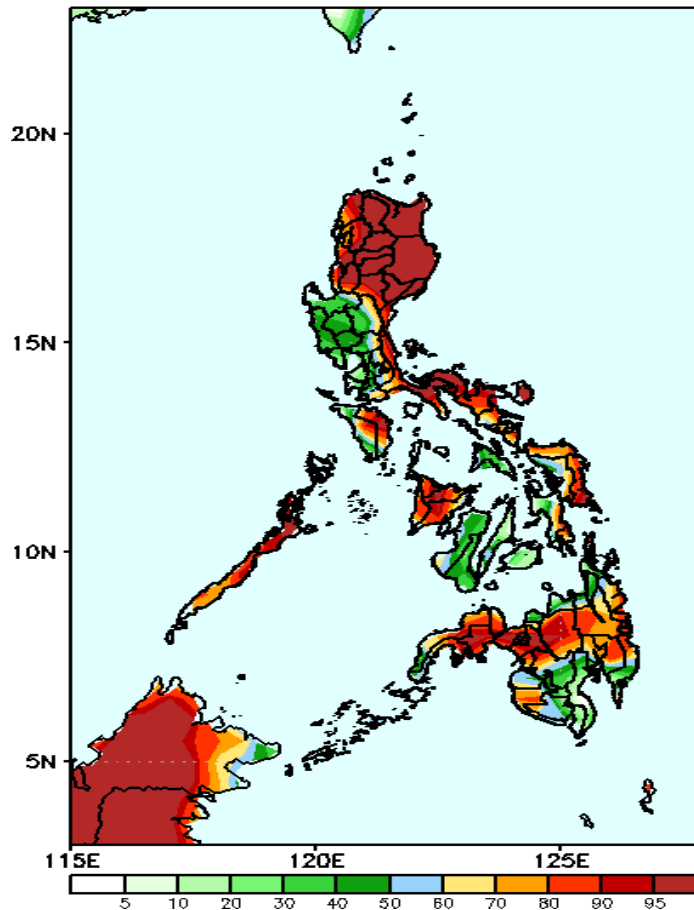
Week 1: Jan 26-Feb 01, 2022

GEFS Week-1 Precip Anomaly
Valid: 20220126 - 20220201



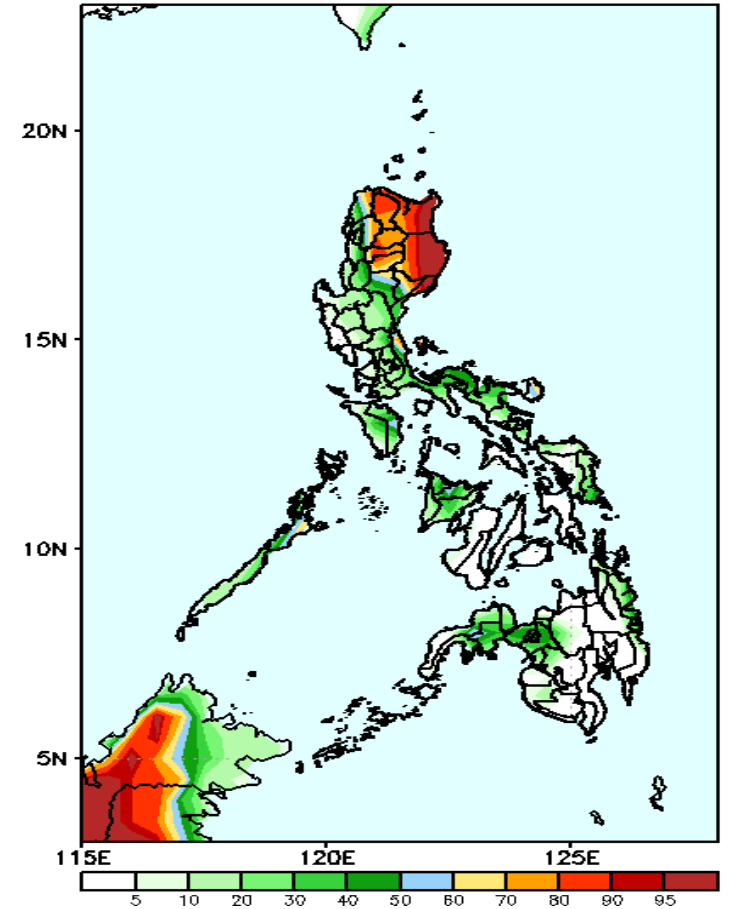
Increase of rainfall of 20-80mm is expected in most parts of Luzon while rainfall deficit of 20-80mm in Visayas & Mindanao during the forecast period.

GEFS Week-1 Exceedance Prob. > 25mm
Valid: 20220126 - 20220201



High probability of rainfall to exceed 25mm in most parts of Northern Luzon, Aurora, most parts of Southern Luzon, Panay Island and most parts of Mindanao while less likely for the remaining parts of the country during the forecast period.

GEFS Week-1 Exceedance Prob. > 50mm
Valid: 20220126 - 20220201



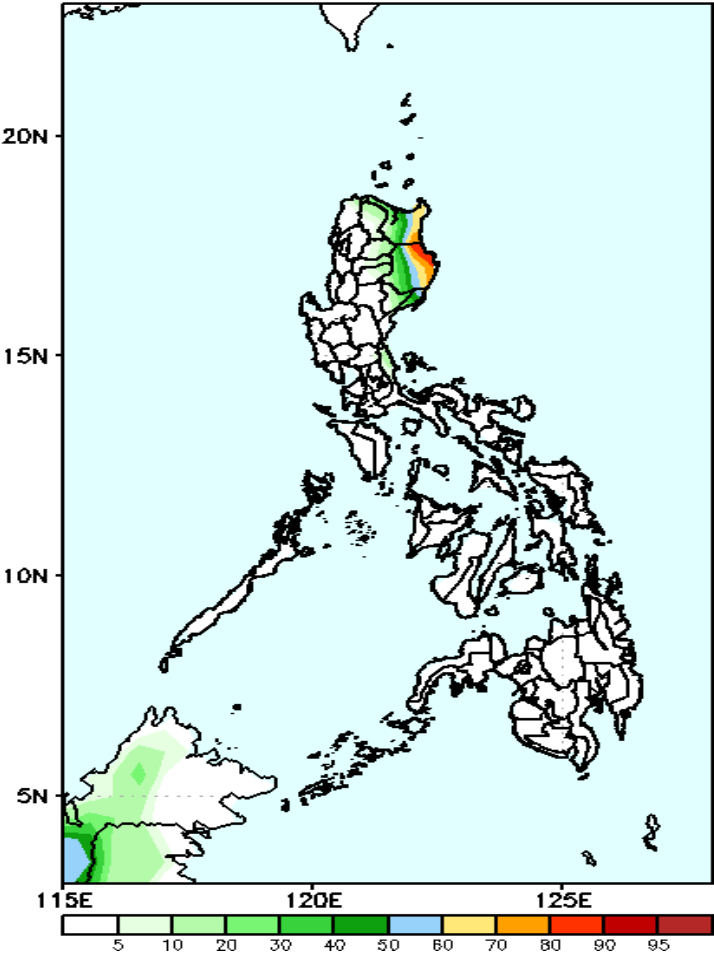
High probability of rainfall to exceed 50mm in most parts of CAR and Cagayan Valley Region while less likely for the rest of the country during the forecast period.



Exceedance Probability > 100/150/200 mm

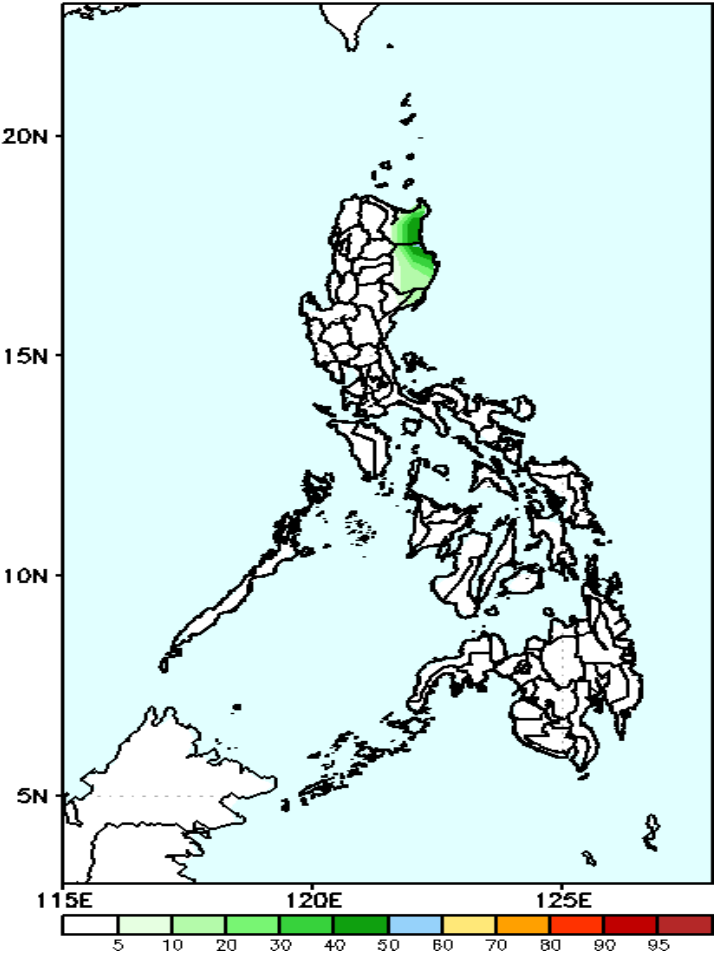
Week 1: Jan 26-Feb 01, 2022

GEFS Week-1 Exceedance Prob. > 100mm
Valid: 20220126 – 20220201



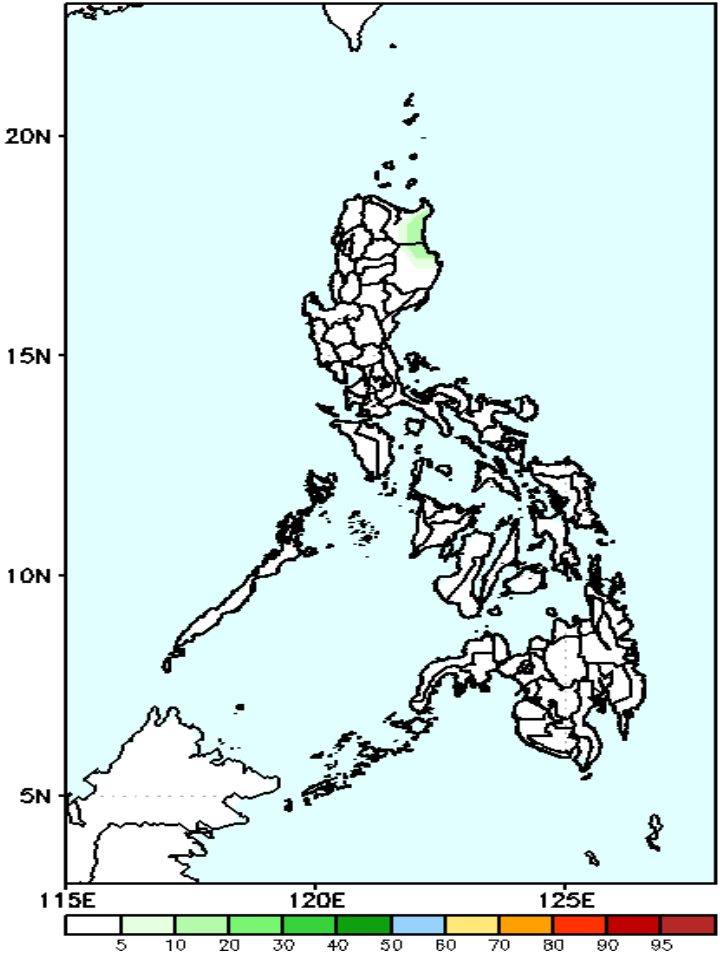
Low probability of rainfall to exceed 100mm in most parts of the country except the eastern section of Cagayan and Isabela during the forecast period.

GEFS Week-1 Exceedance Prob. > 150mm
Valid: 20220126 – 20220201



Low probability of rainfall to exceed 150mm in most parts of the country is expected during the forecast period.

GEFS Week-1 Exceedance Prob. > 200mm
Valid: 20220126 – 20220201

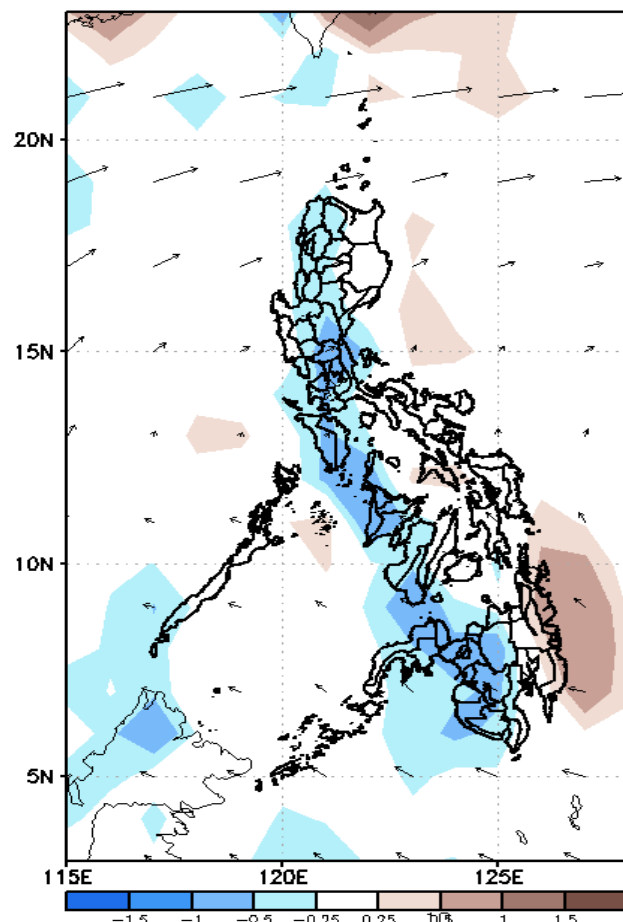
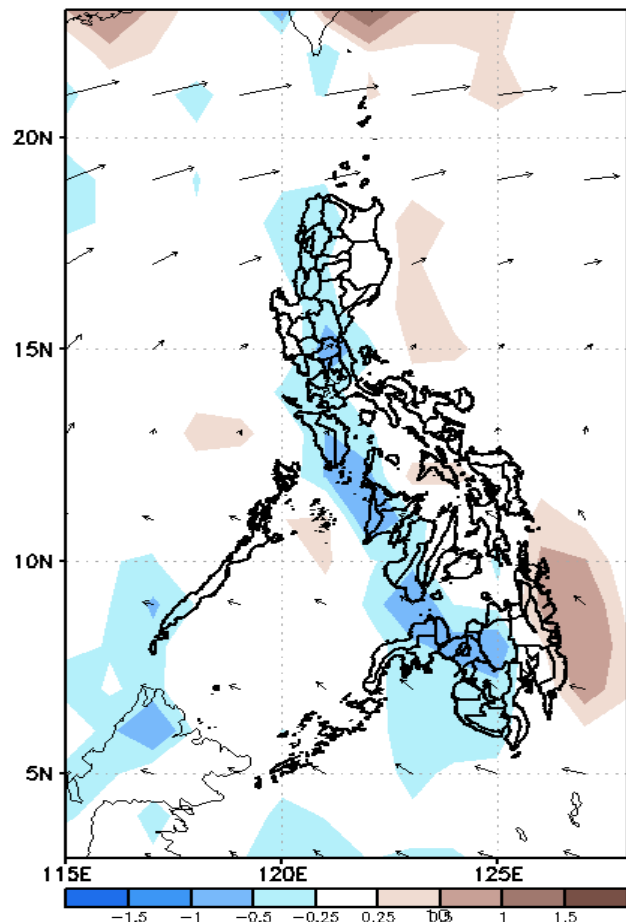


Low probability of rainfall to exceed 200mm in most parts of the country is expected during the forecast period.

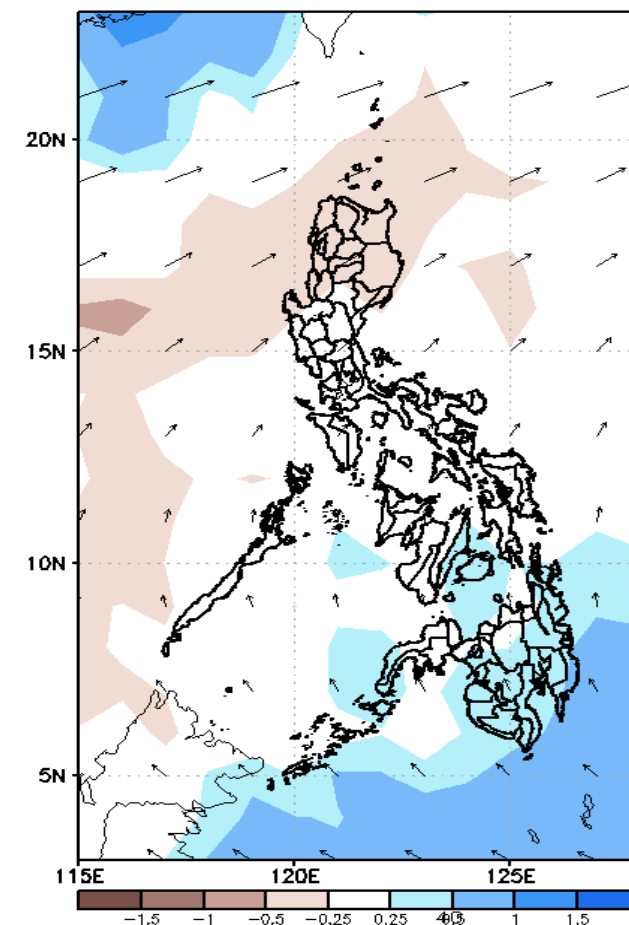
GEFS Week-2 Forecasts: Divergence & Wind Anomaly

Week 2: Feb 02-08, 2022

GEFS Week-2 850-hPa Divergence and Wind Anom
Valid: 20220202 - 20220208



GEFS week-2 200-hPa Divergence and Wind Anomaly
Valid: 20220202 - 20220208

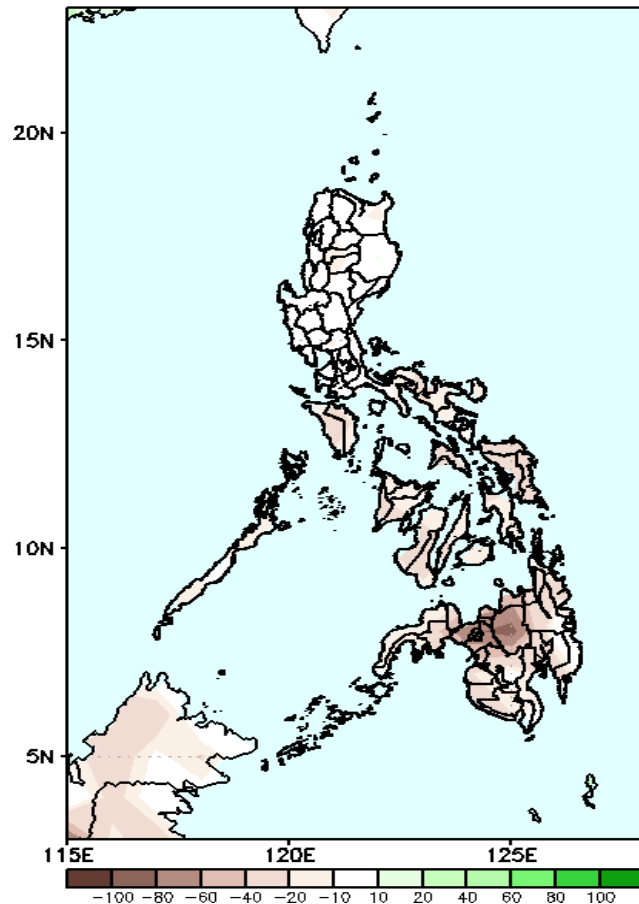


Upper and low level Divergence suggest likelihood of light precipitation in some parts of Southern Visayas and most parts of Mindanao. Easterlies affecting most parts of the country during the forecast period.

Precipitation Anomaly and Exceedance Probability > 25/50 mm

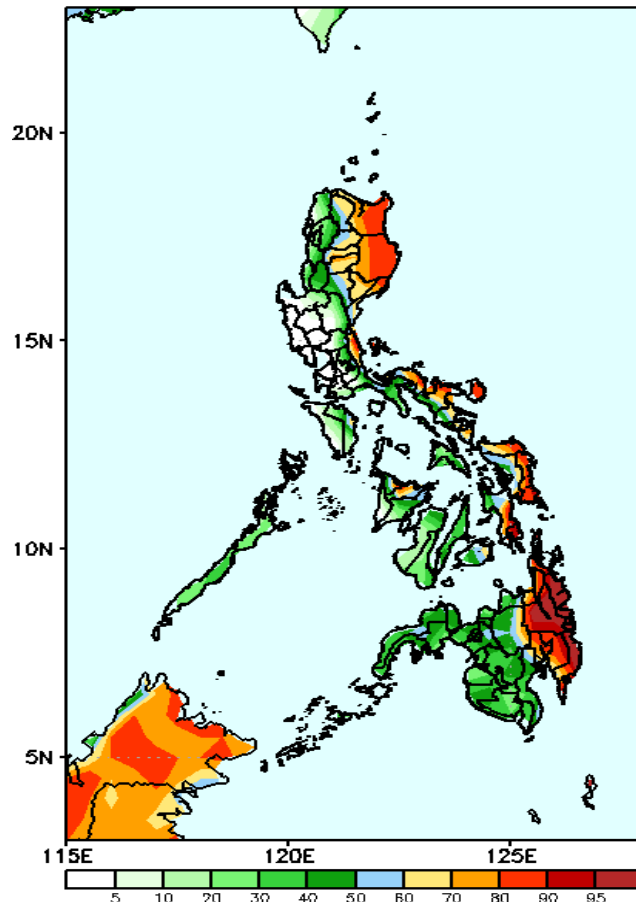
Week 2: Feb 02-08, 2022

GEFS Week-2 Precip Anomaly
Valid: 20220202 – 20220208



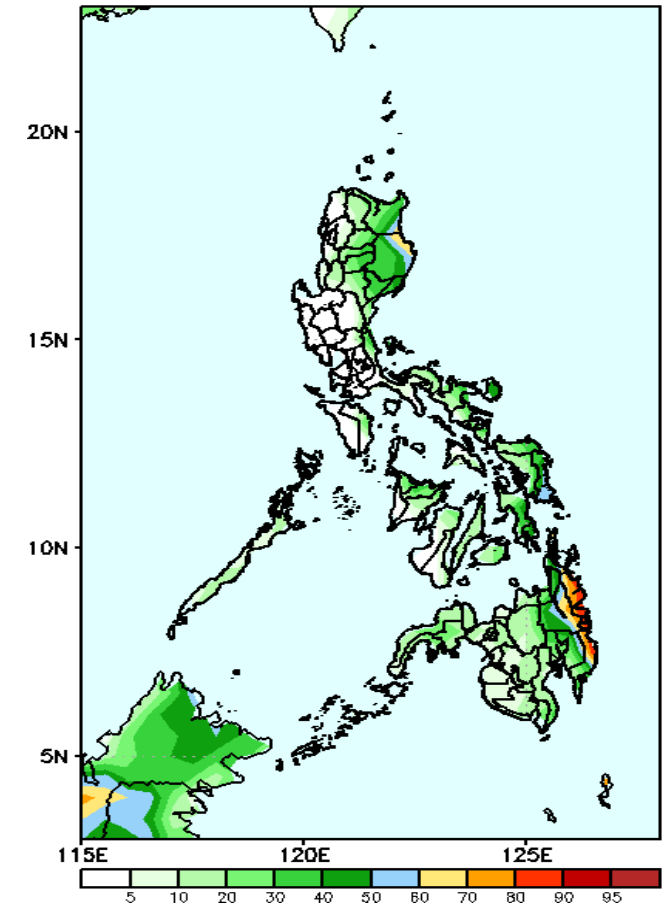
Rainfall deficit 40-80mm is expected in most parts of the country during the forecast period

GEFS Week-2 Exceedance Prob. > 25mm
Valid: 20220202 – 20220208



70 – 90% probability of rainfall to exceed 25mm in some parts of CAR, most of Cagayan Valley Region, some parts of Bicol region, Eastern Visayas and most parts of Eastern Mindanao while less likely for the rest of the country during the forecast period.

GEFS Week-2 Exceedance Prob. > 50mm
Valid: 20220202 – 20220208

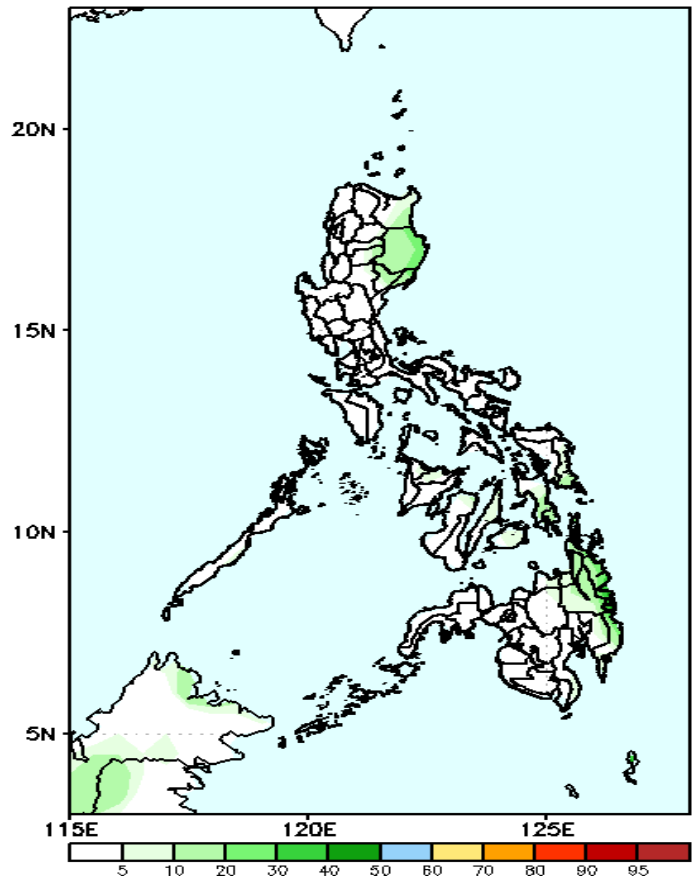


Low probability of rainfall to exceed 50mm in most parts of the country is expected except in the eastern parts of CARAGA & Davao Region during the forecast period.

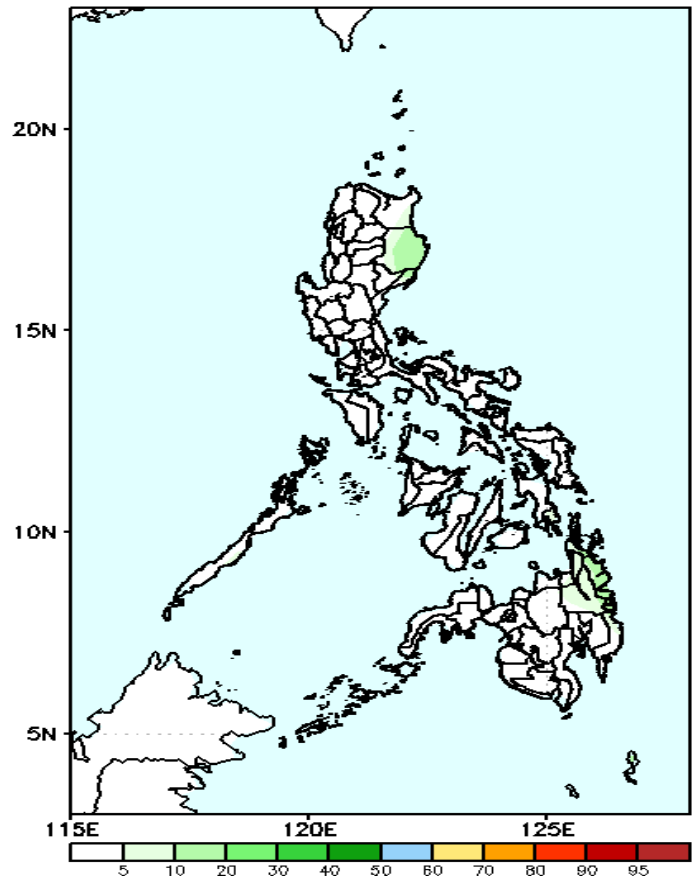
Exceedance Probability > 100/150/200 mm

Week 2: Feb 02-08, 2022

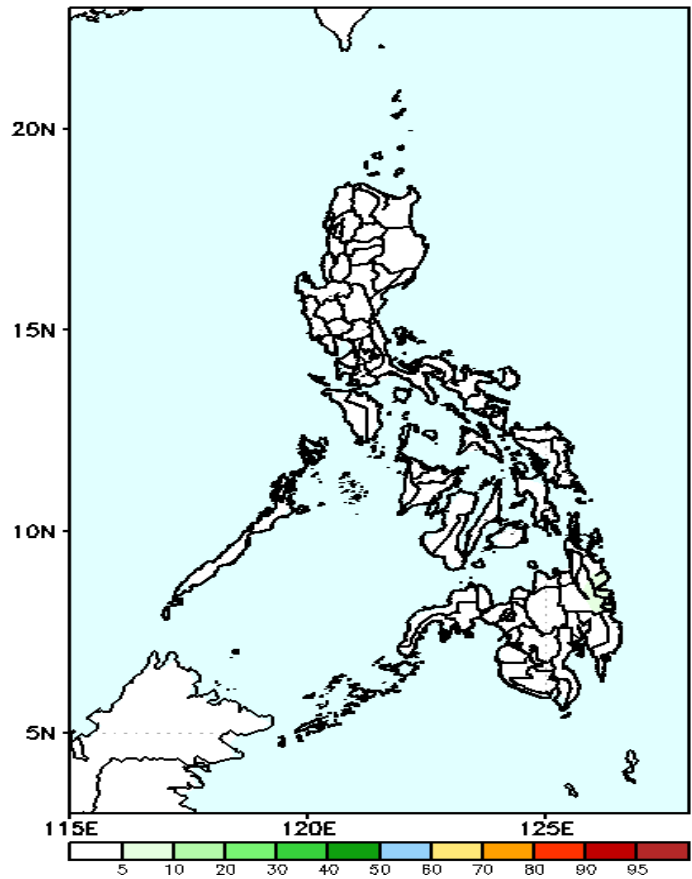
GEFS Week-2 Exceedance Prob. > 100mm
Valid: 20220202 – 20220208



GEFS Week-2 Exceedance Prob. > 150mm
Valid: 20220202 – 20220208



GEFS Week-2 Exceedance Prob. > 200mm
Valid: 20220202 – 20220208

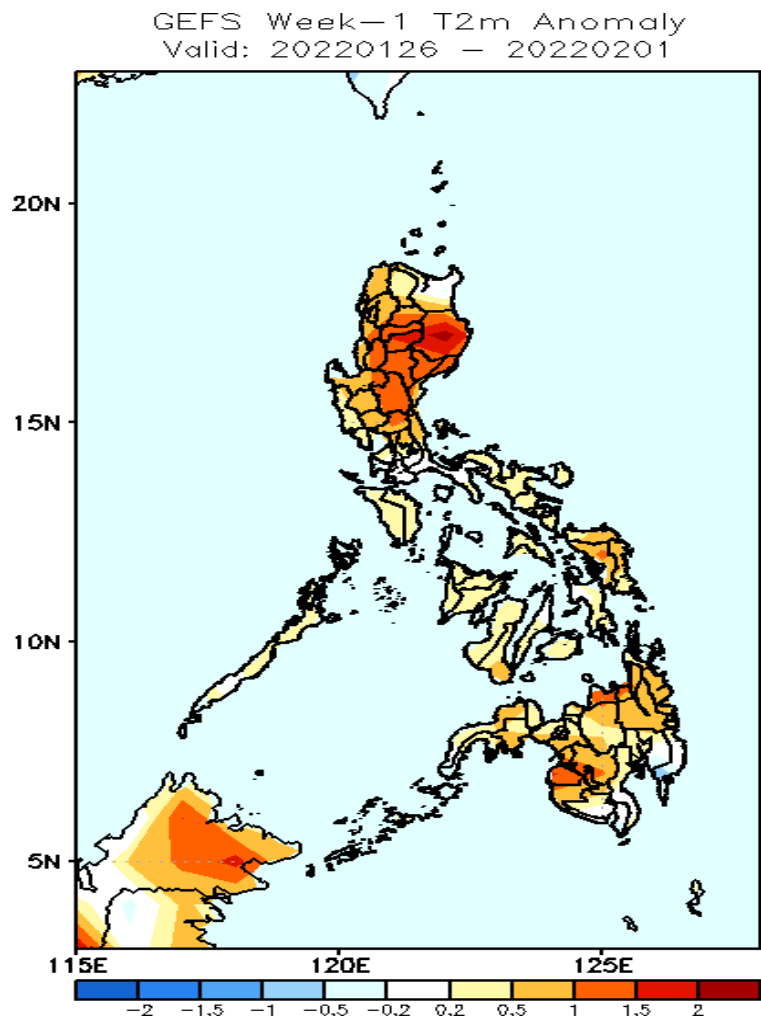


Low probability of rainfall to exceed 100mm in most parts of the country is expected during the forecast period.

Low probability of rainfall to exceed 150mm in most parts of the country is expected during the forecast period.

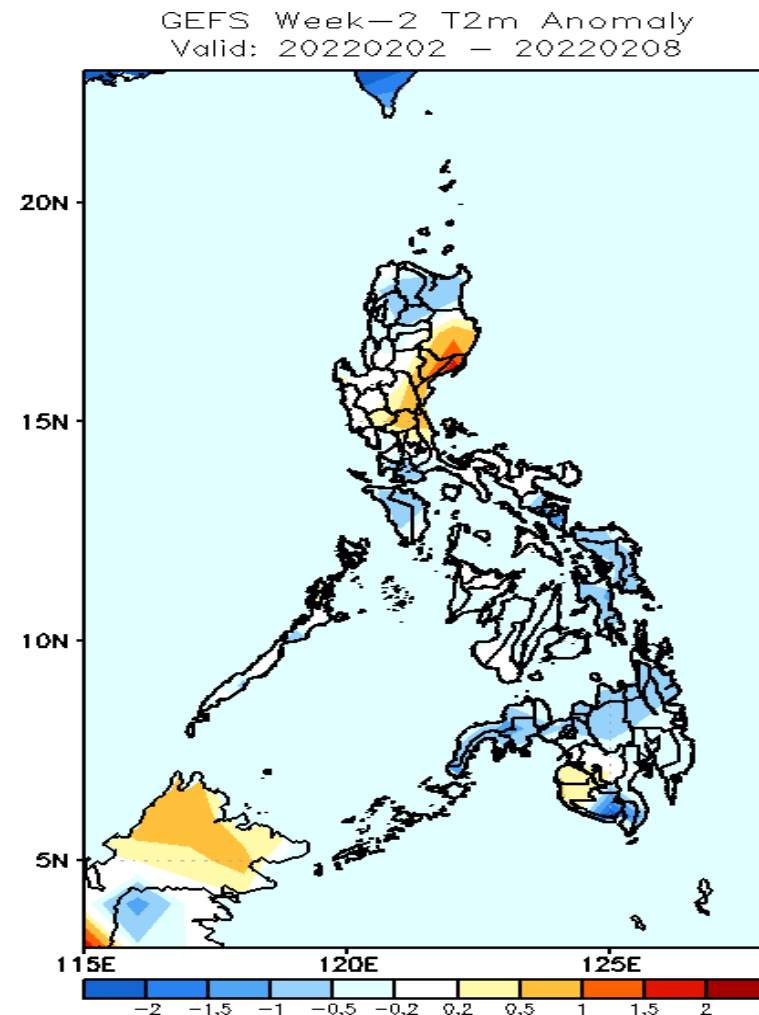
Low probability of rainfall to exceed 200mm in most parts of the country is expected during the forecast period.

GEFS Week-1 & 2 Forecasts: T2m Anomaly



2m Temperature Week 1: Jan 26-Feb 01, 2022

Slightly warmer to warmer than average surface air temperature will likely experience in most parts of the country during the forecast period.



2m Temperature Week 2: Feb 02-08, 2022

Average to slightly cooler than average surface air temperature will likely experience in most parts of the country except in parts of eastern Luzon where slightly warmer to warmer than average temperature is expected during the forecast period.