



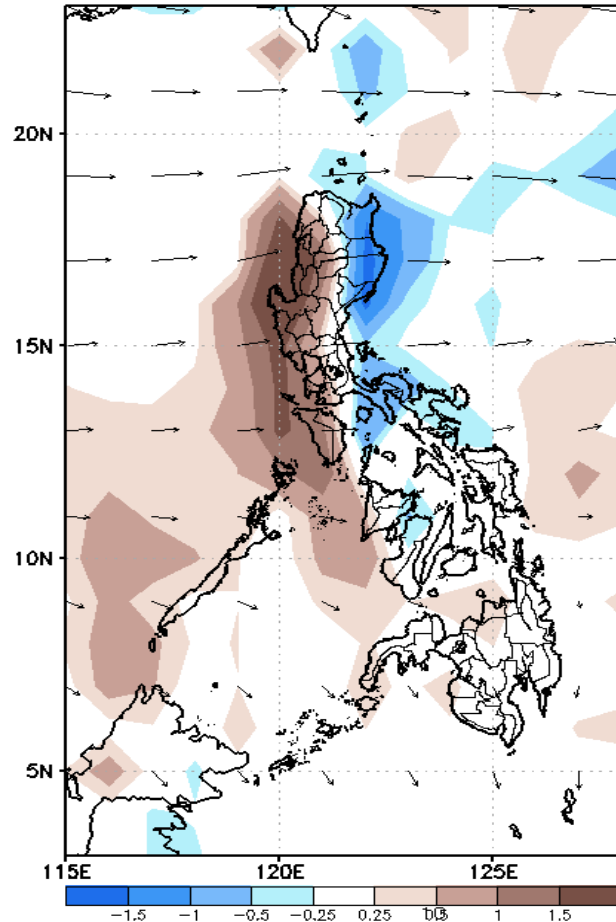
Week 1 & Week 2 Forecast for the Philippines using GEFS Model



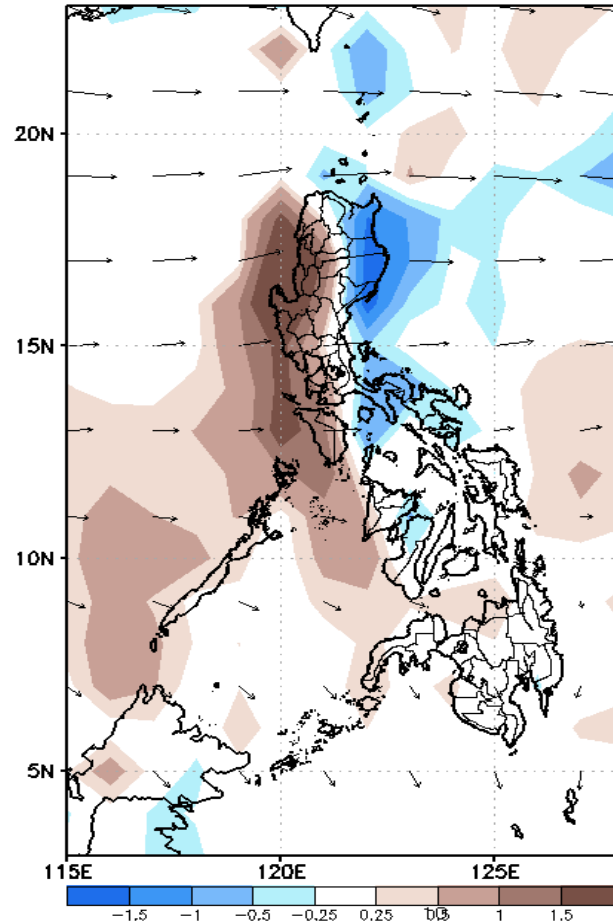
GEFS Week-1 Forecasts: Divergence & Wind Anomaly

Week 1: July 26- Aug 01, 2021

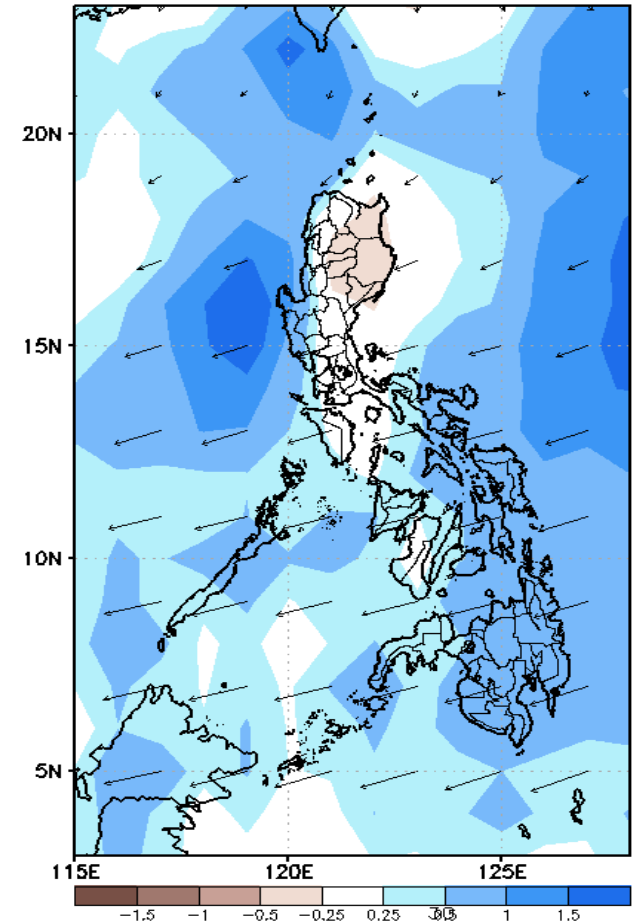
GEFS Week-1 850-hPa Divergence and Wind Anomaly
Valid: 20210726 - 20210801



GEFS Week-1 700-hPa Divergence and Wind Anomaly
Valid: 20210726 - 20210801



GEFS Week-1 200-hPa Divergence and Wind Anomaly
Valid: 20210726 - 20210801

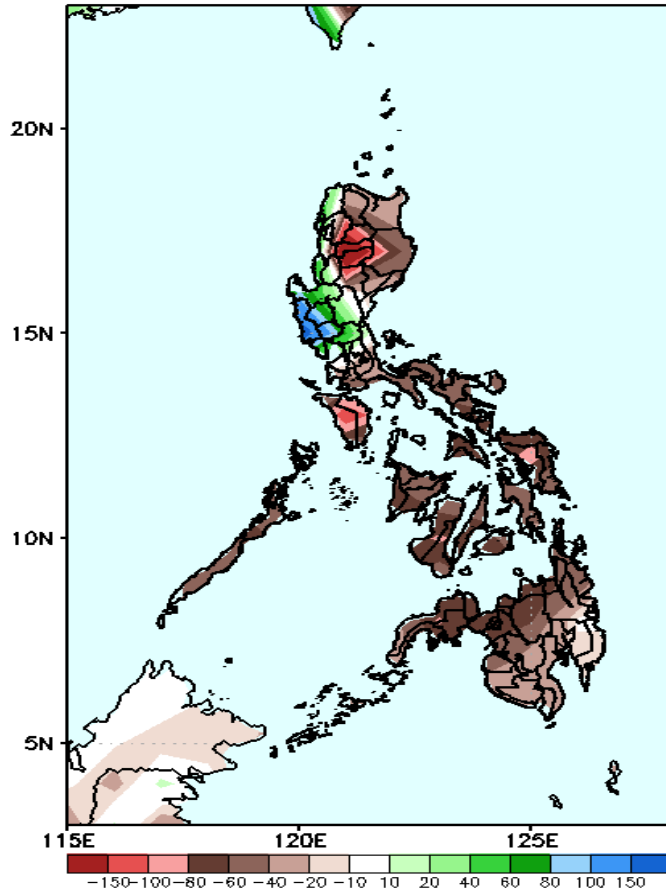


Upper and low level Divergence suggest likelihood of precipitation in Western sections of Luzon and most parts of Visayas and Mindanao. Southwest monsoon affecting the Western sections of the country. Easterlies affecting the rest of the country. Attributing to light to moderate rains especially in the Western section during the forecast period.

Precipitation Anomaly and Exceedance Probability > 25/50 mm

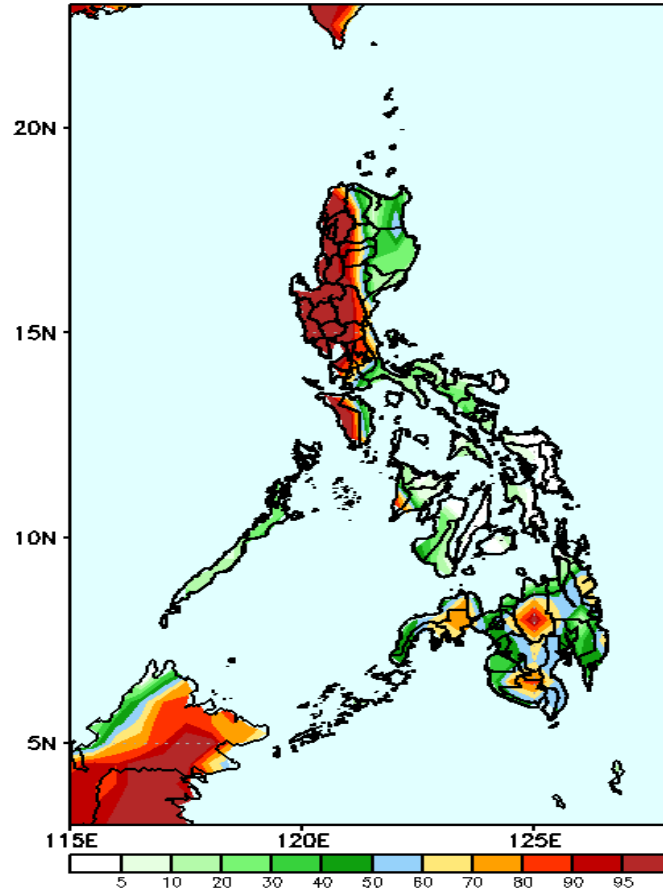
Week 1: July 26- Aug 01, 2021

GEFS Week-1 Precip Anomaly
Valid: 20210726 - 20210801



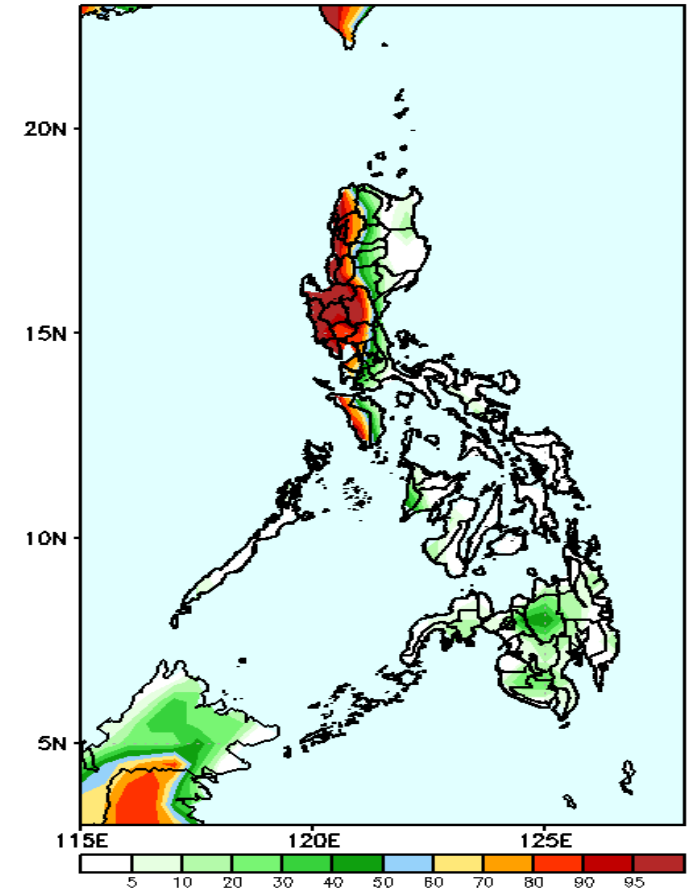
Rainfall deficit of 80-150mm is expected in most parts of the country (especially in Cordillera Region & Mindoro) except in Ilocos Region and Central Luzon where there is 40-150mm increase of rainfall during the forecast period.

GEFS Week-1 Exceedance Prob. > 25mm
Valid: 20210726 - 20210801



High probability of rainfall to exceed 25mm in western and central parts of Luzon, Bukidnon, North Cotabato and Zamboanga del Sur while less likely for the rest of the country during the forecast period.

GEFS Week-1 Exceedance Prob. > 50mm
Valid: 20210726 - 20210801

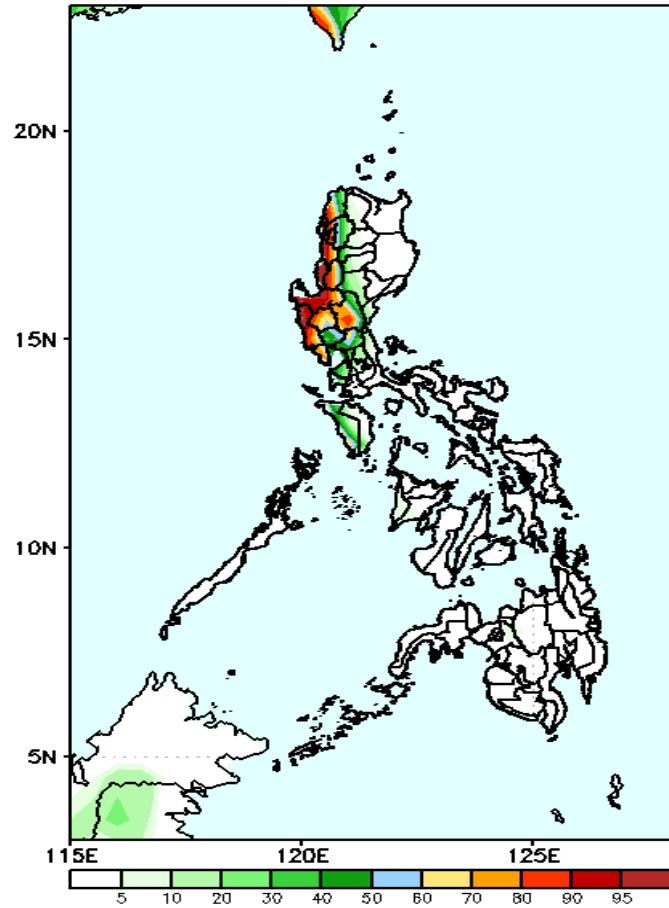


High probability of rainfall to exceed 50mm in western & central parts of Luzon while less likely for the rest of the country during the forecast period.

Exceedance Probability > 100/150/200 mm

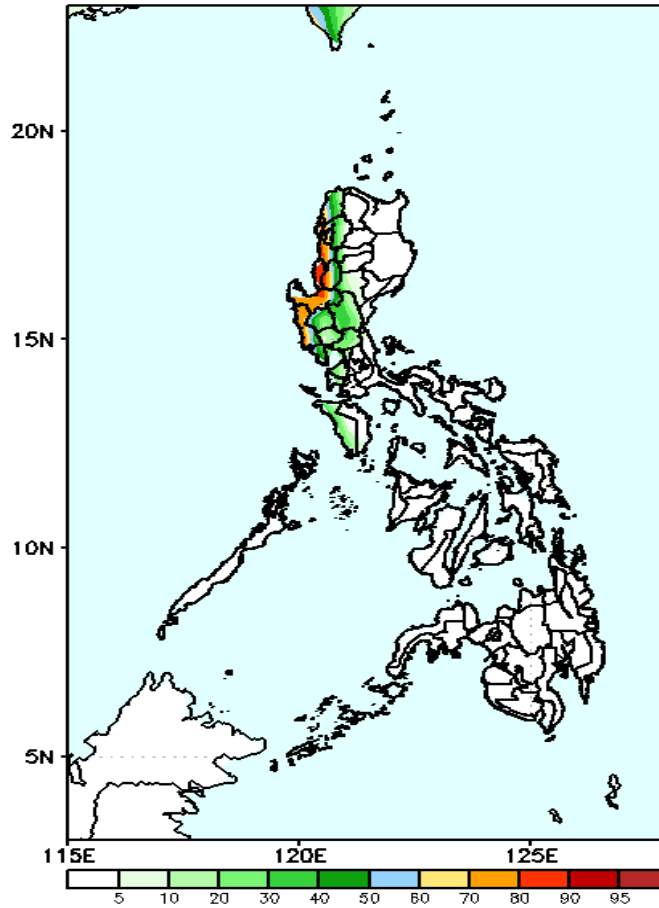
Week 1: July 26- Aug 01, 2021

GEFS Week-1 Exceedance Prob. > 100mm
Valid: 20210726 – 20210801



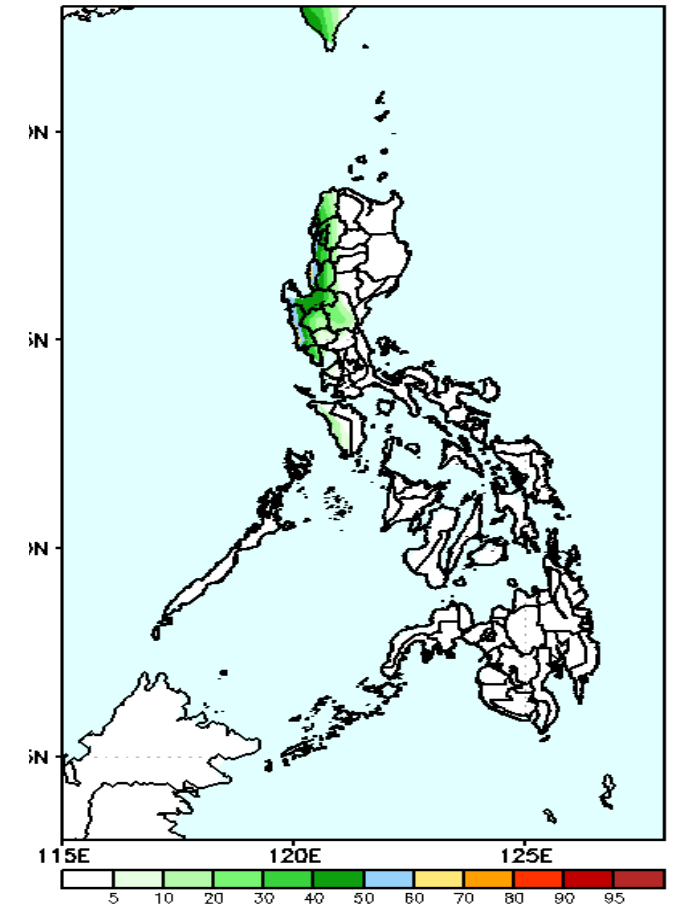
High probability of rainfall to exceed 100mm in Ilocos Region, Tarlac, Zambales, Bataan and Nueva Ecija while less likely for the rest of the country during the forecast period.

GEFS Week-1 Exceedance Prob. > 150mm
Valid: 20210726 – 20210801



60-90% probability of rainfall to exceed 150mm in Ilocos Region and Zambales while less likely for the rest of the country during the forecast period.

GEFS Week-1 Exceedance Prob. > 200mm
Valid: 20210726 – 20210801

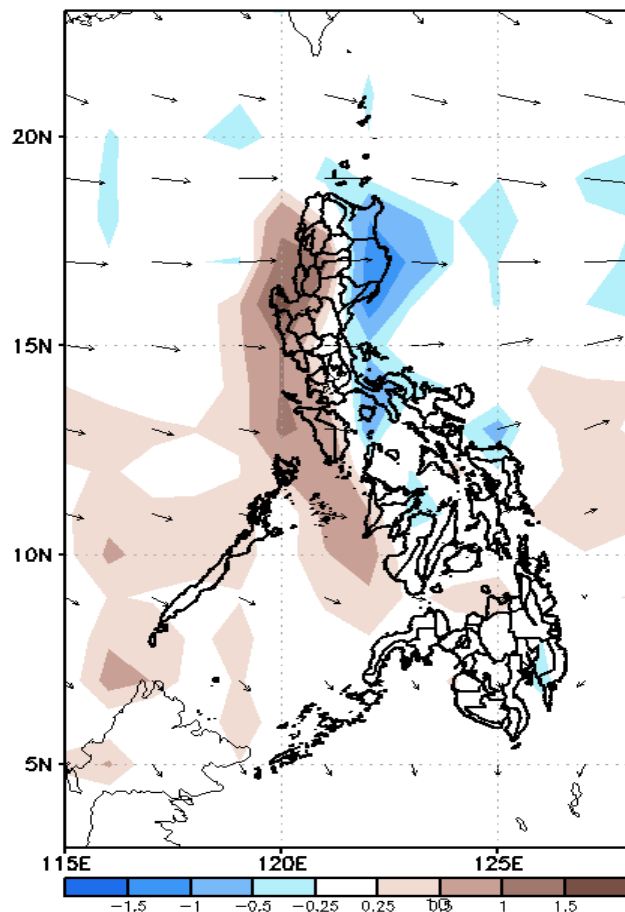


Less probability of rainfall to exceed 200mm in most parts of the country is expected during the forecast period.

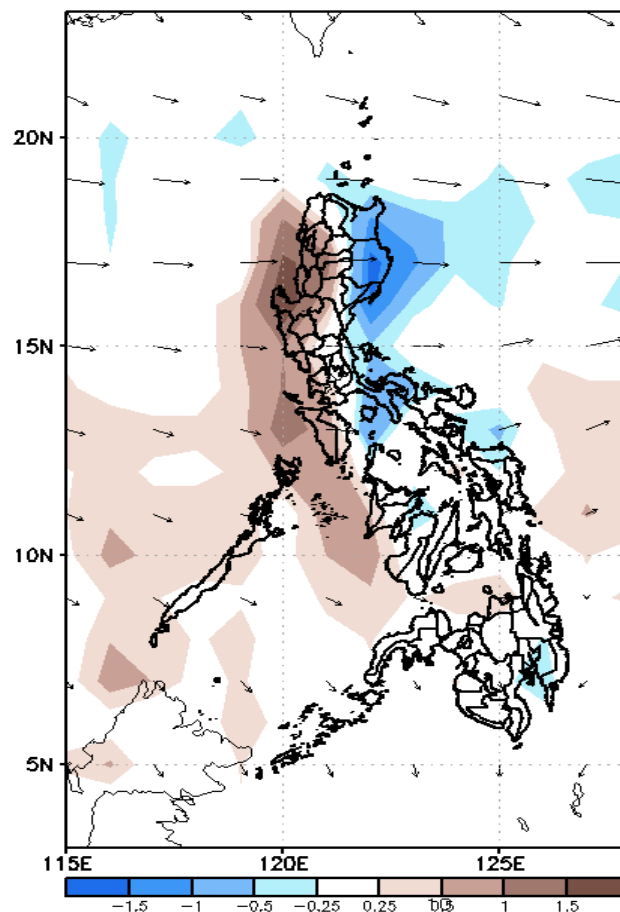
GEFS Week-2 Forecasts: Divergence & Wind Anomaly

Week 2: Aug 02-08, 2021

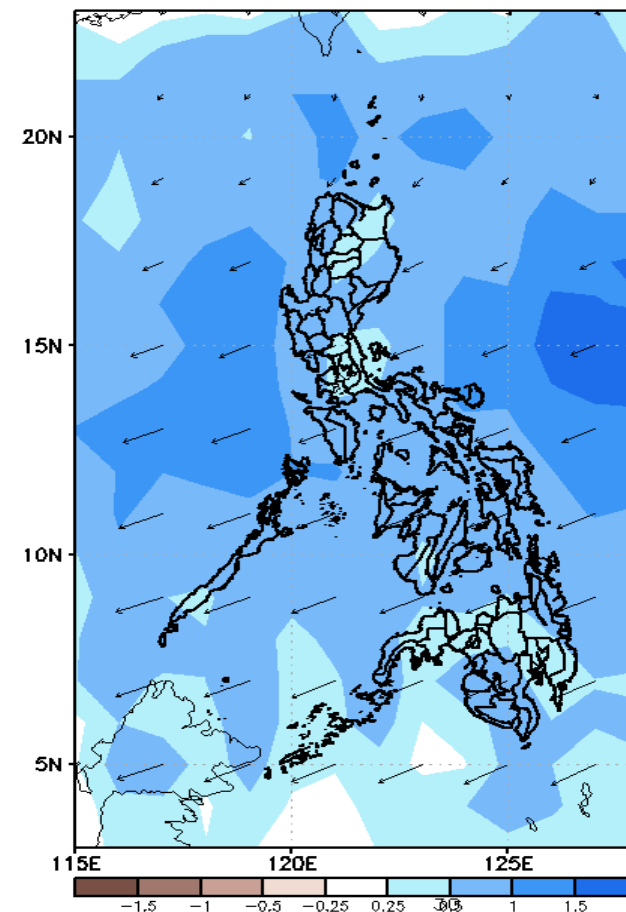
GEFS Week-2 850-hPa Divergence and Wind Anom
Valid: 20210802 - 20210808



GEFS Week-2 700-hPa Divergence and Wind Anom
Valid: 20210802 - 20210808



GEFS week-2 200-hPa Divergence and Wind Anom
Valid: 20210802 - 20210808

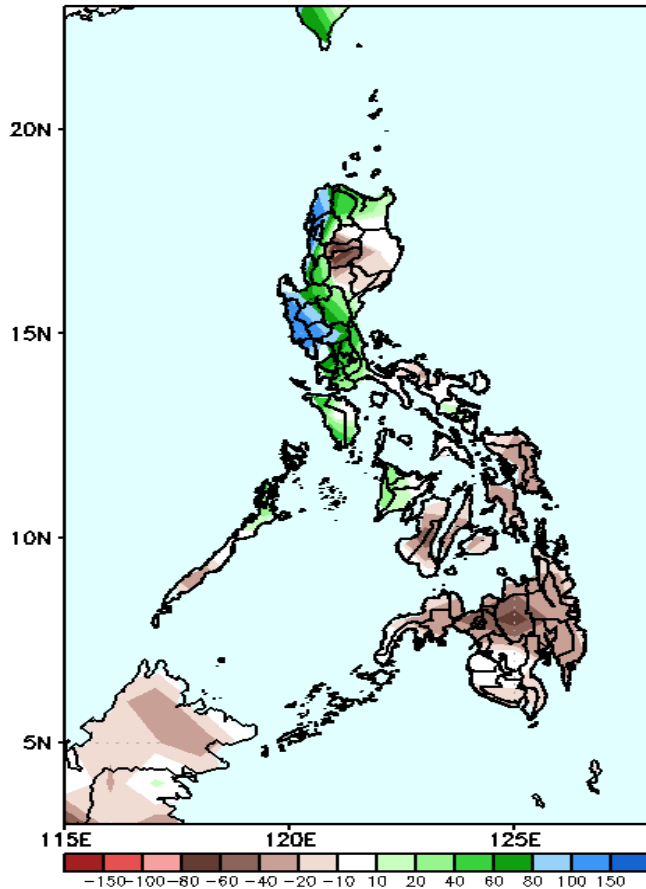


Upper and low level Divergence suggest likelihood of precipitation in most parts of the country. Southwest monsoon affecting the Western sections of the country. Easterlies affecting the rest of the country. Attributing to light to moderate rains especially in the Western section during the forecast period.

Precipitation Anomaly and Exceedance Probability > 25/50 mm

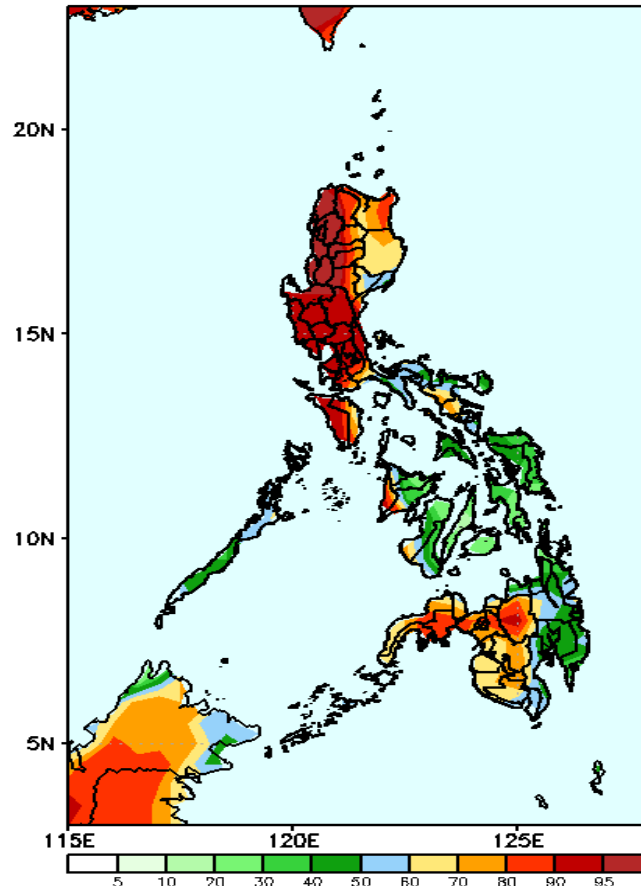
Week 2: Aug 02-08, 2021

GEFS Week-2 Precip Anomaly
Valid: 20210802 - 20210808



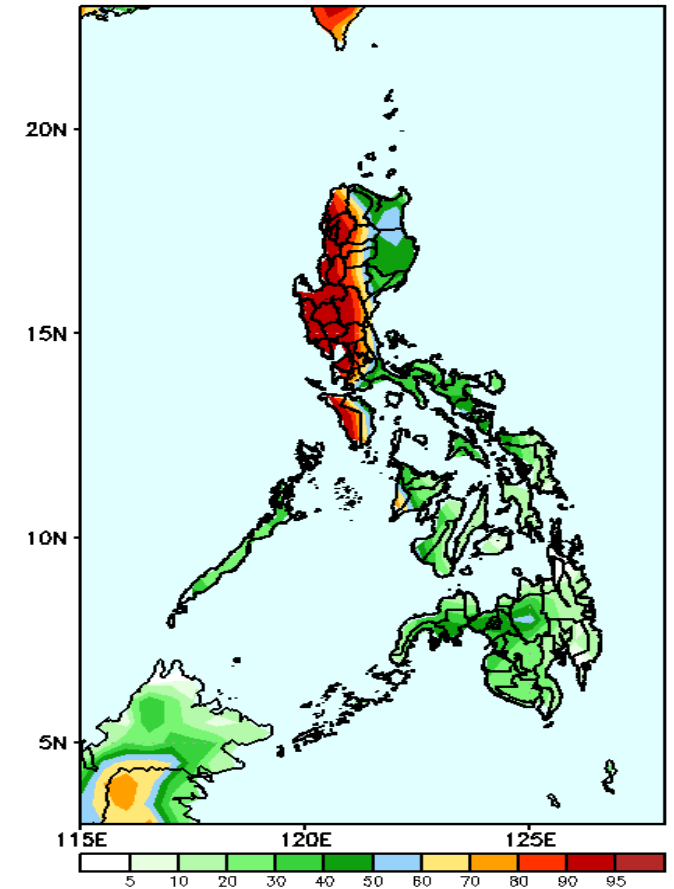
Increase of rainfall of 60-150mm is expected in Ilocos Region and Central Luzon while 40-80mm rainfall deficit in Cordillera Region and most parts of Visayas & Mindanao during the forecast period.

GEFS Week-2 Exceedance Prob. > 25mm
Valid: 20210802 - 20210808



High probability of rainfall to exceed 25mm in most parts of Luzon, Antique, Iloilo and western section of Mindanao (including Bukidnon) while less likely for the rest of the country during the forecast period.

GEFS Week-2 Exceedance Prob. > 50mm
Valid: 20210802 - 20210808



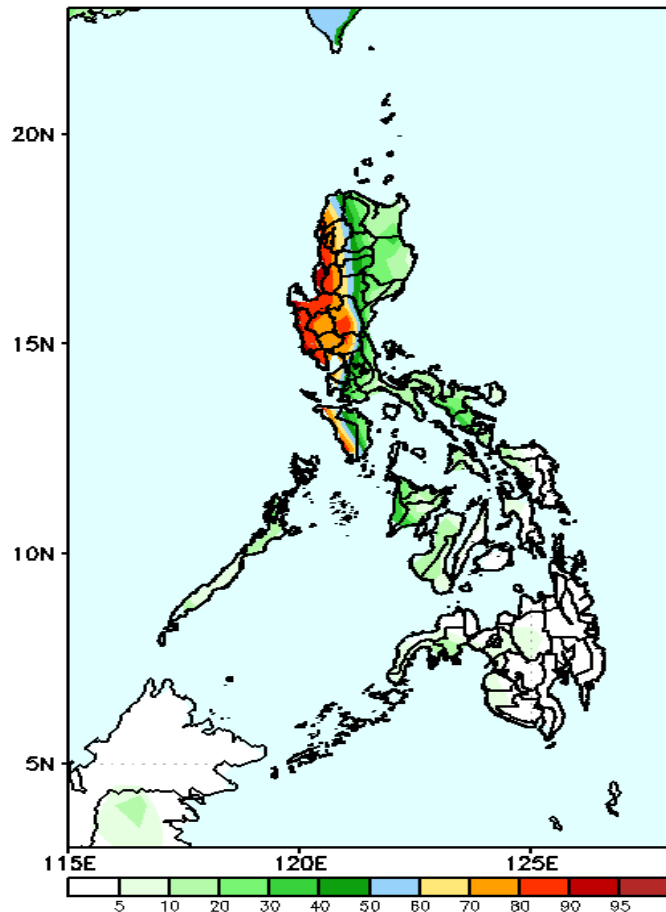
High probability of rainfall to exceed 50mm in western and central parts of Luzon while less likely for the rest of the country during the forecast period.



Exceedance Probability > 100/150/200 mm

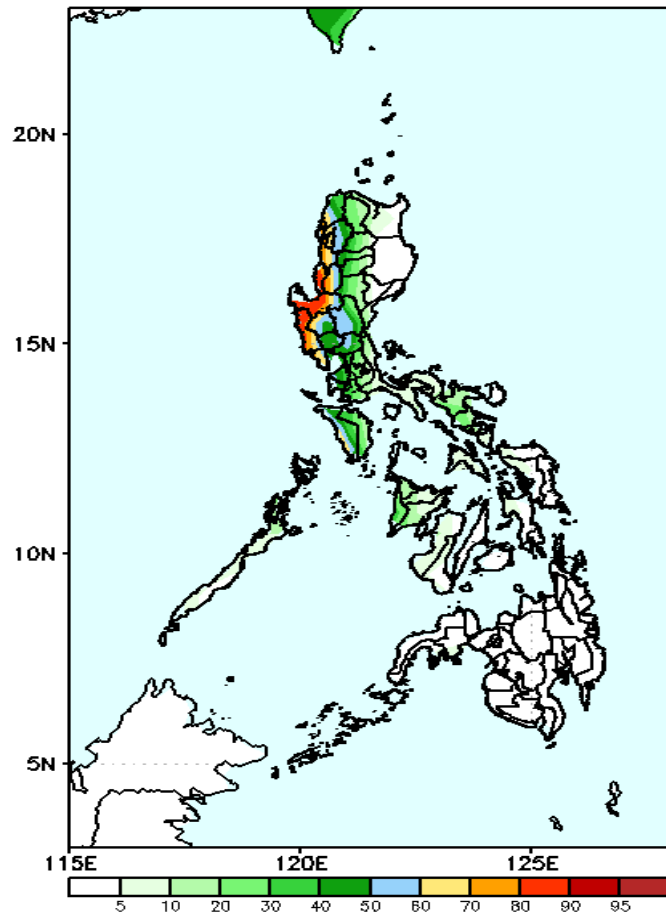
Week 2: Aug 02-08, 2021

GEFS Week-2 Exceedance Prob. > 100mm
Valid: 20210802 — 20210808



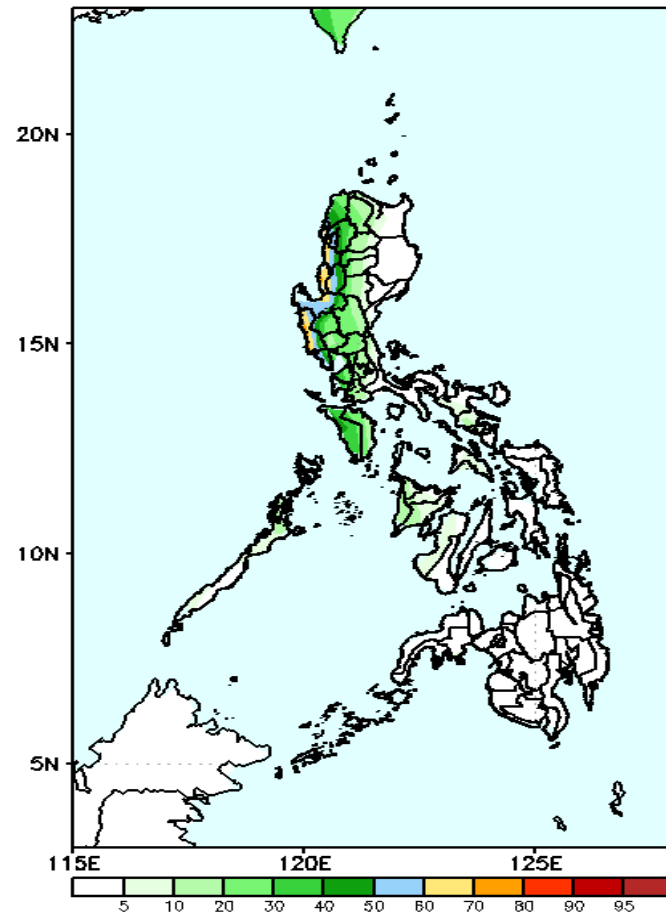
High probability of rainfall to exceed 100mm in western Luzon while less likely for the rest of the country during the forecast period.

GEFS Week-2 Exceedance Prob. > 150mm
Valid: 20210802 — 20210808



High probability of rainfall to exceed 150mm in Ilocos Region and Zambales while less likely for the rest of the country during the forecast period.

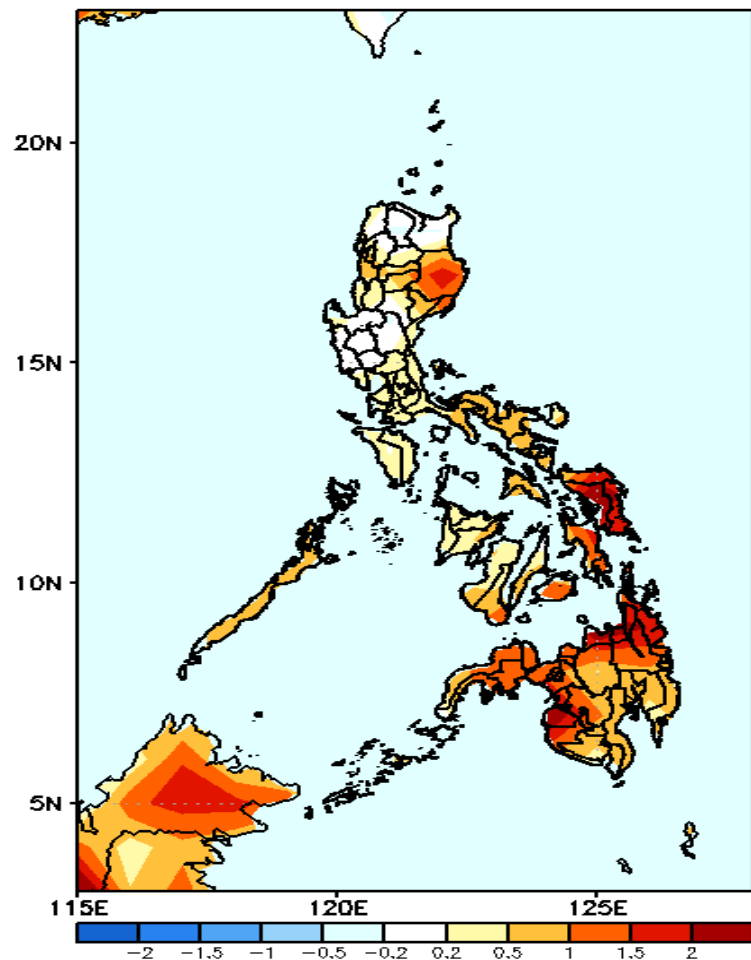
GEFS Week-2 Exceedance Prob. > 200mm
Valid: 20210802 — 20210808



60-85% probability of rainfall to exceed 200mm in Ilocos Region and Zambales while less likely for the rest of the country during the forecast period.

GEFS Week-1 & 2 Forecasts: T2m Anomaly

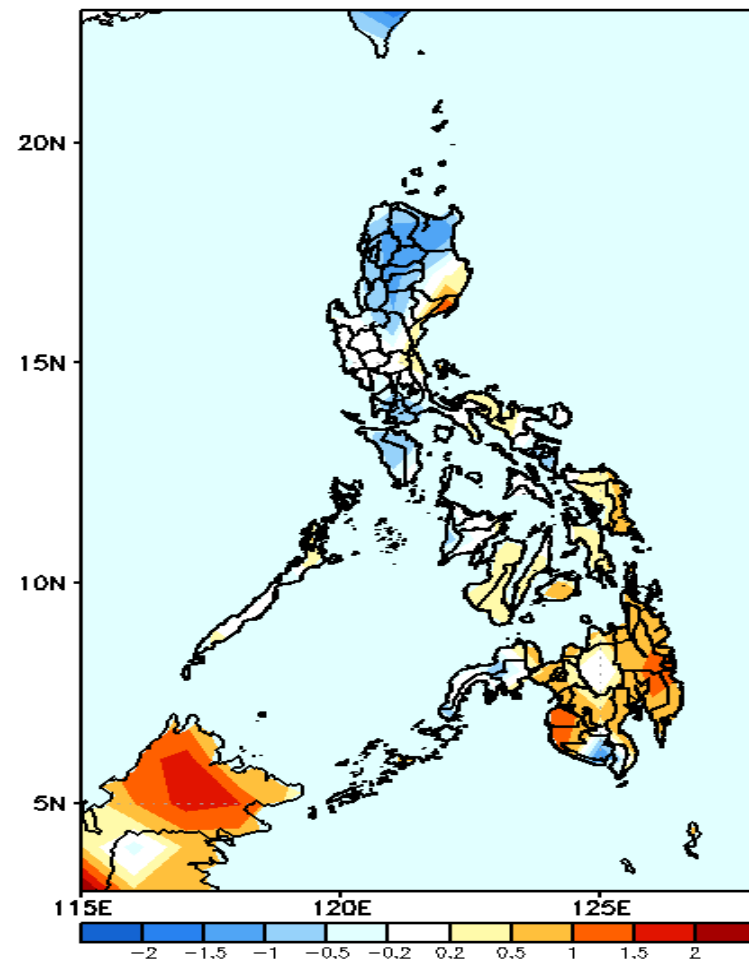
GEFS Week-1 T2m Anomaly
Valid: 20210726 - 20210801



2m Temperature Week 1: July 26- Aug 01, 2021

Warmer than average surface air temperature will likely experience in Isabela, Eastern Visayas and most parts of Mindanao while average to slightly warmer than average surface air temperature for the rest of the country during the forecast period.

GEFS Week-2 T2m Anomaly
Valid: 20210802 - 20210808



2m Temperature Week 2: Aug 02-08, 2021

Slightly warmer to warmer than average surface air temperature will likely experience in Baler, Bohol, Eastern Visayas and most parts of Mindanao while Average to slightly cooler than average surface air temperature in most parts of Luzon and the rest of Visayas during the forecast period.