



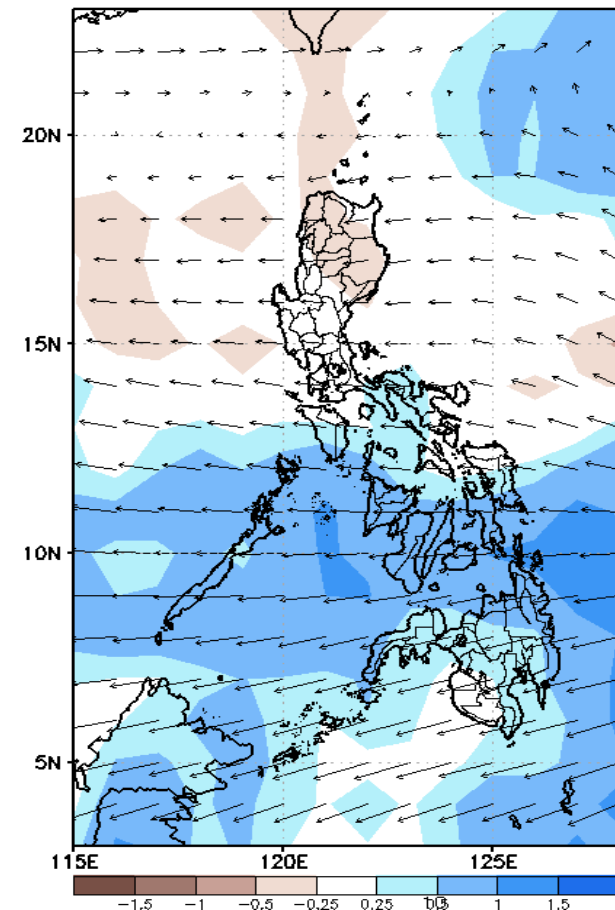
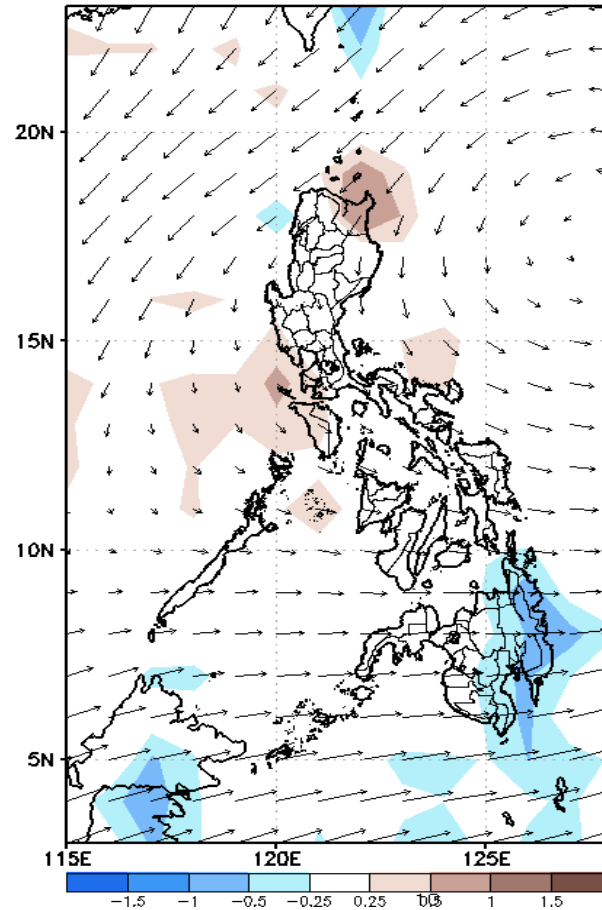
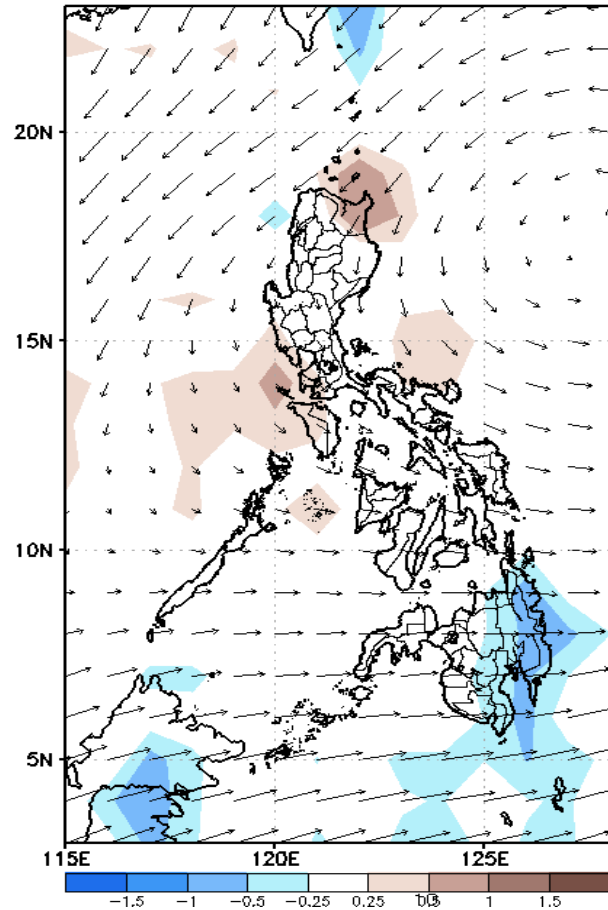
Week 1 & Week 2 Forecast for the Philippines using GEFS Model



GEFS Week-1 Forecasts: Wind Anomaly Forecast

Week 1: Oct 26- Nov 01, 2022

GEFS Week-1 700-hPa Divergence and Wind Anom
Valid: 20221026 - 20221101

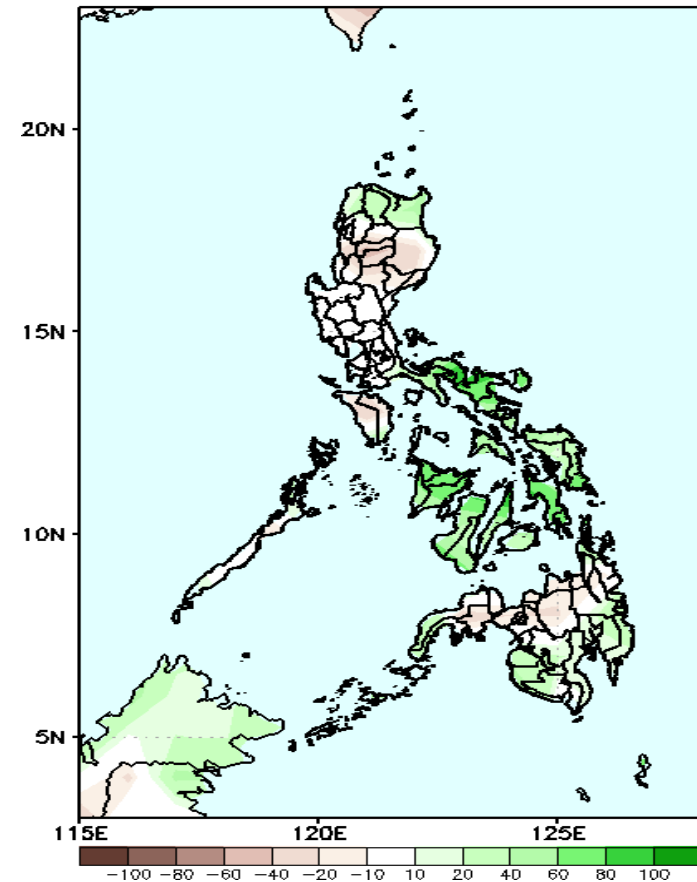


Northeast Monsoon will likely affect most parts of Northern and Central Luzon; westerly wind affecting Southern Mindanao. While a cyclonic circulation affecting Visayas and Northern Mindanao during the forecast period.

Precipitation Anomaly and Exceedance Probability > 25/50 mm

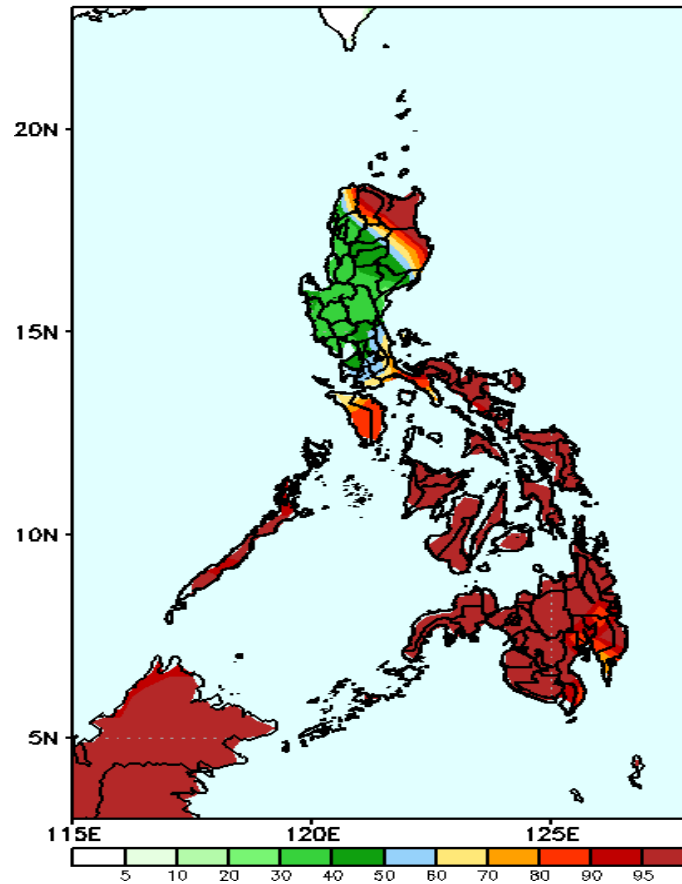
Week 1: Oct 26- Nov 01, 2022

GEFS Week-1 Precip Anomaly
Valid: 20221026 - 20221101



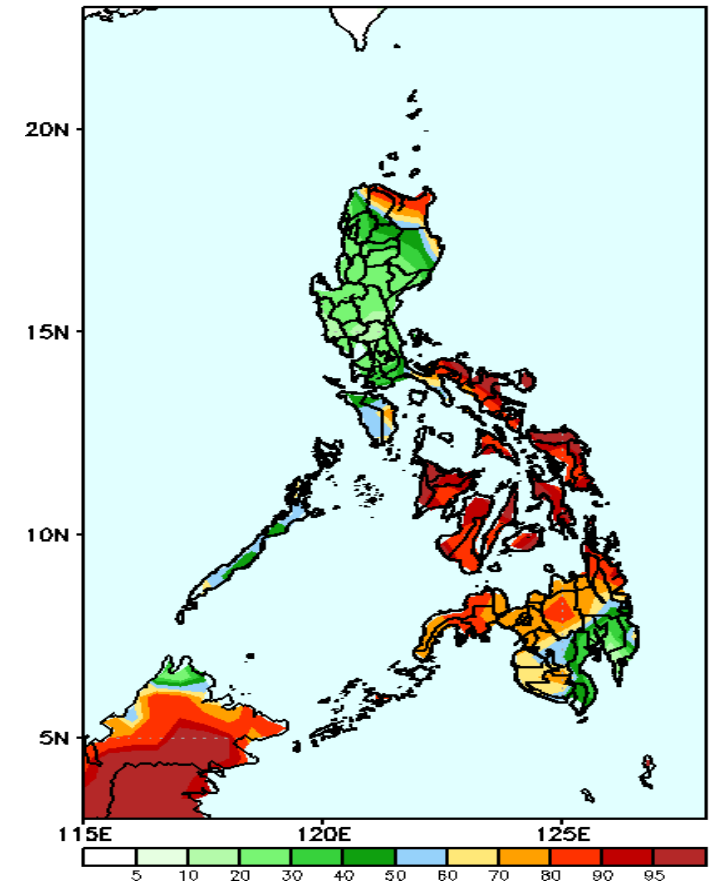
Increase of rainfall of 40-85mm is expected in Ilocos Norte, Apayao, Cagayan, Quezon, Bicol Region, Visayas and southern Mindanao while 20-40mm rainfall deficit in Mt. Province, Ifugao, Mindoro and southern Mindanao during the forecast period.

GEFS Week-1 Exceedance Prob. > 25mm
Valid: 20221026 - 20221101



High probability of rainfall to exceed 25mm in Apayao, Cagayan, Isabela, most parts of Southern Luzon, Visayas and Mindanao while less likely for the rest of Luzon during the forecast period.

GEFS Week-1 Exceedance Prob. > 50mm
Valid: 20221026 - 20221101

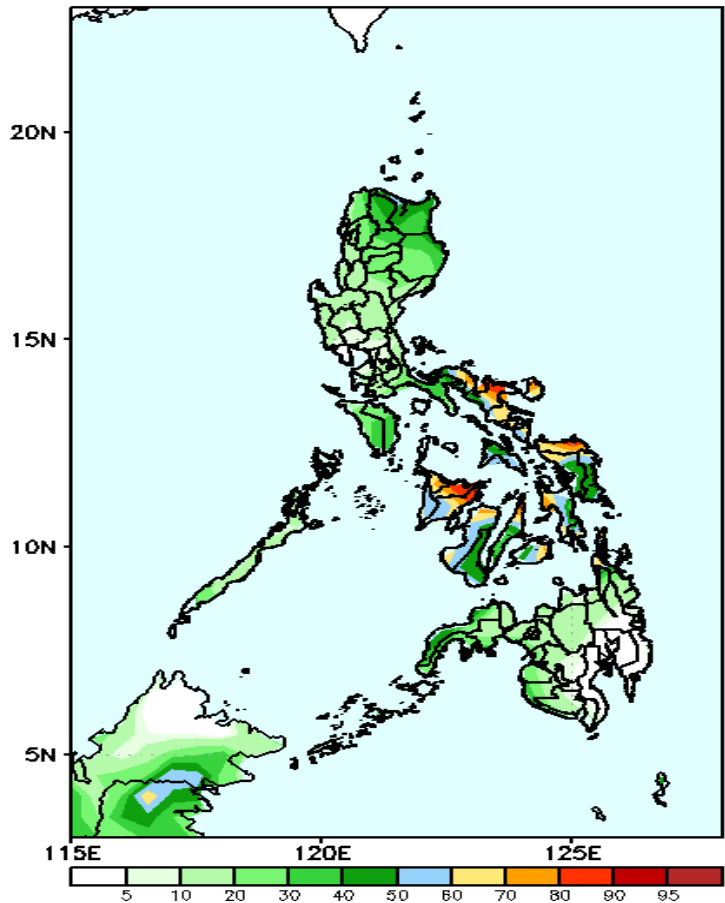


High probability of rainfall to exceed 50mm in Apayao, Cagayan, Isabela, most parts of Southern Luzon, Visayas and Mindanao while less likely for the rest of the country during the forecast period.

Exceedance Probability > 100/150/200 mm

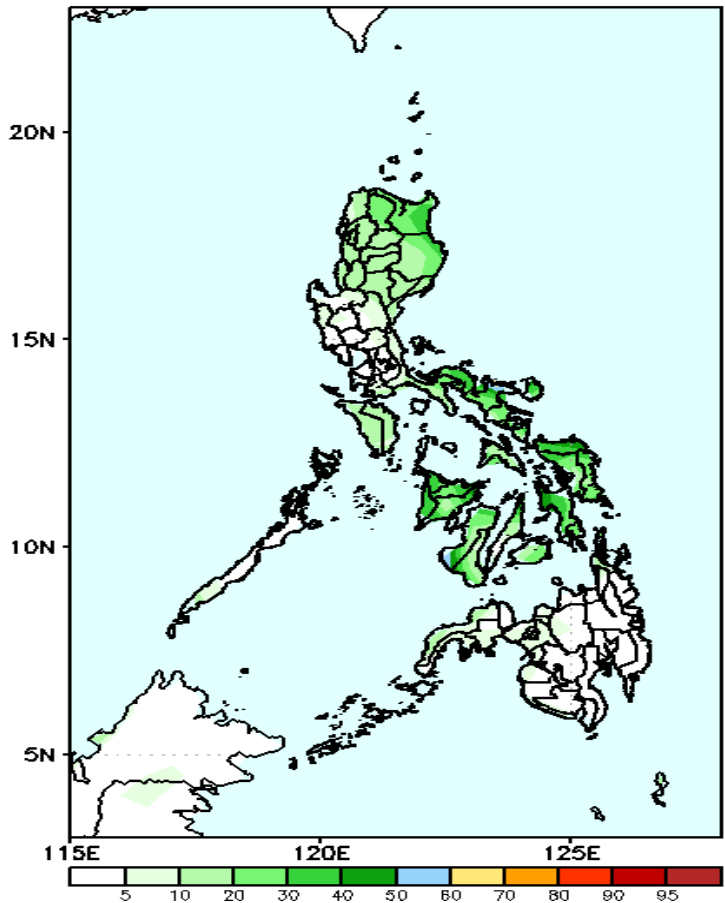
Week 1: Oct 26- Nov 01, 2022

GEFS Week-1 Exceedance Prob. > 100mm
Valid: 20221026 – 20221101



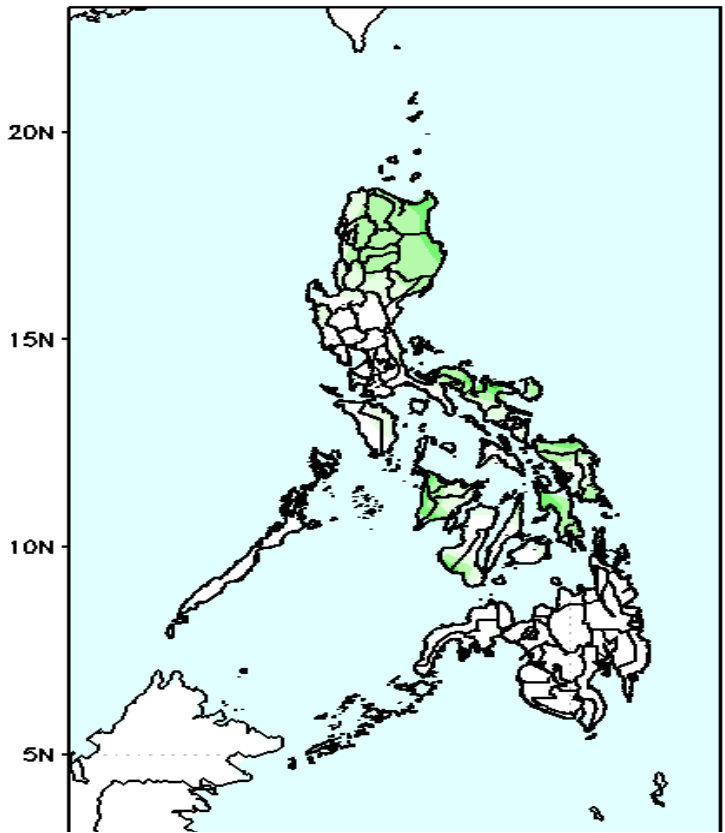
High probability of rainfall to exceed 100mm in most parts of Bicol region and Visayas while less likely for the rest of the country during the forecast period.

GEFS Week-1 Exceedance Prob. > 150mm
Valid: 20221026 – 20221101



Low probability of rainfall to exceed 150mm in most parts of the country during the forecast period.

GEFS Week-1 Exceedance Prob. > 200mm
Valid: 20221026 – 20221101

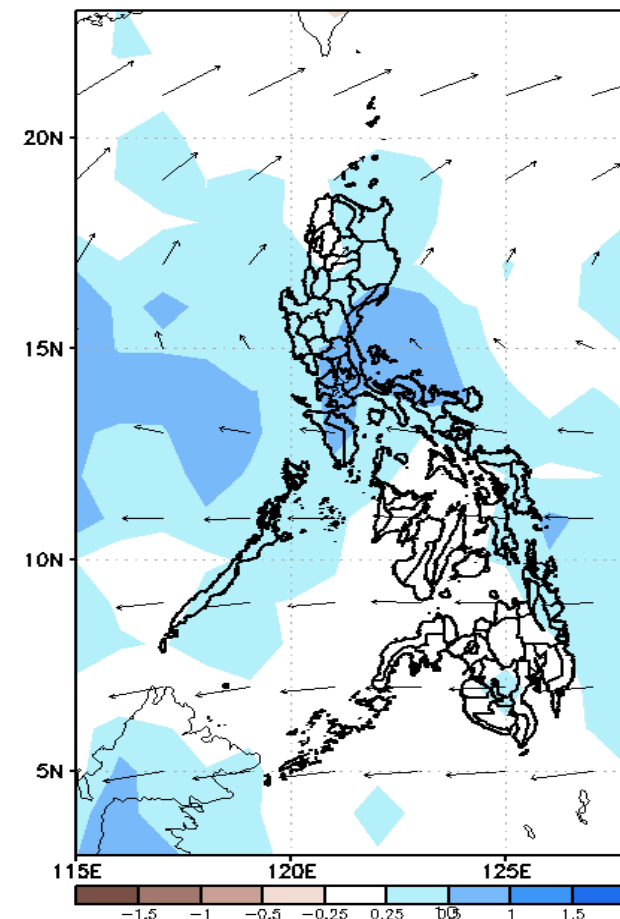
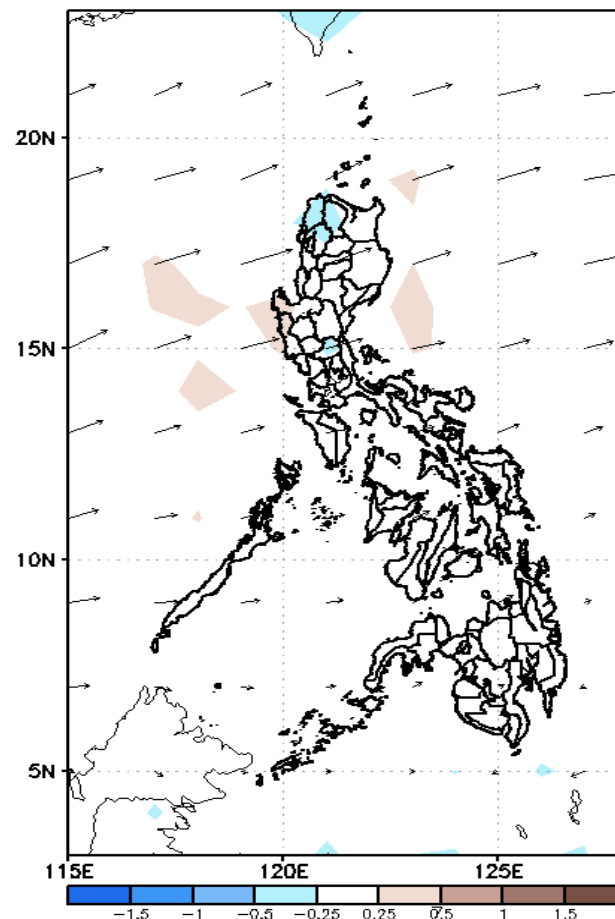
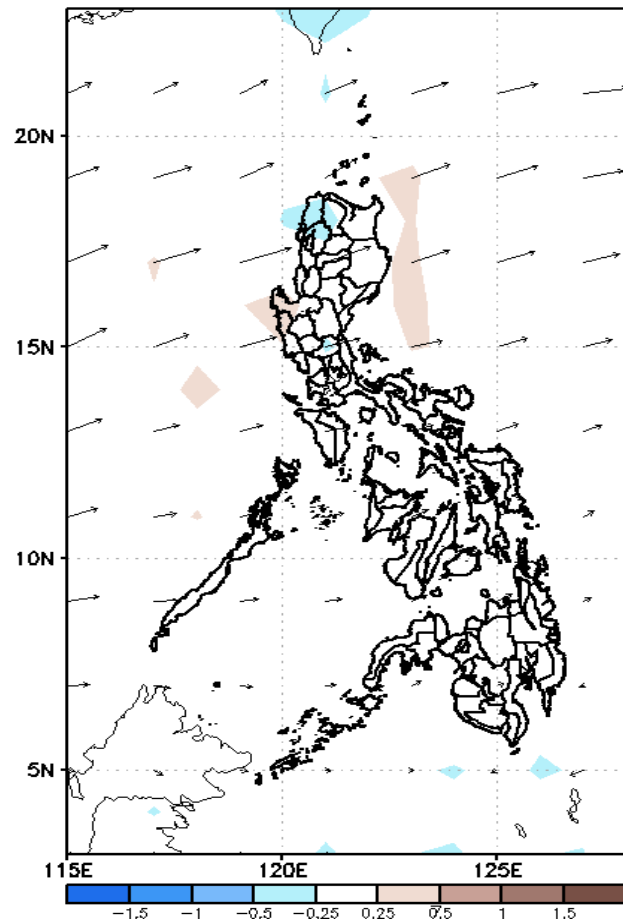


High probability of rainfall to exceed 100mm in most parts of Bicol region and Visayas while less likely for the rest of the country during the forecast period.

GEFS Week-2 Forecasts: Wind Anomaly Forecast

Week 2: Nov 02-08, 2022

GEFS Week-2 850-hPa Divergence and Wind Anomaly
Valid: 20221102 - 20221108

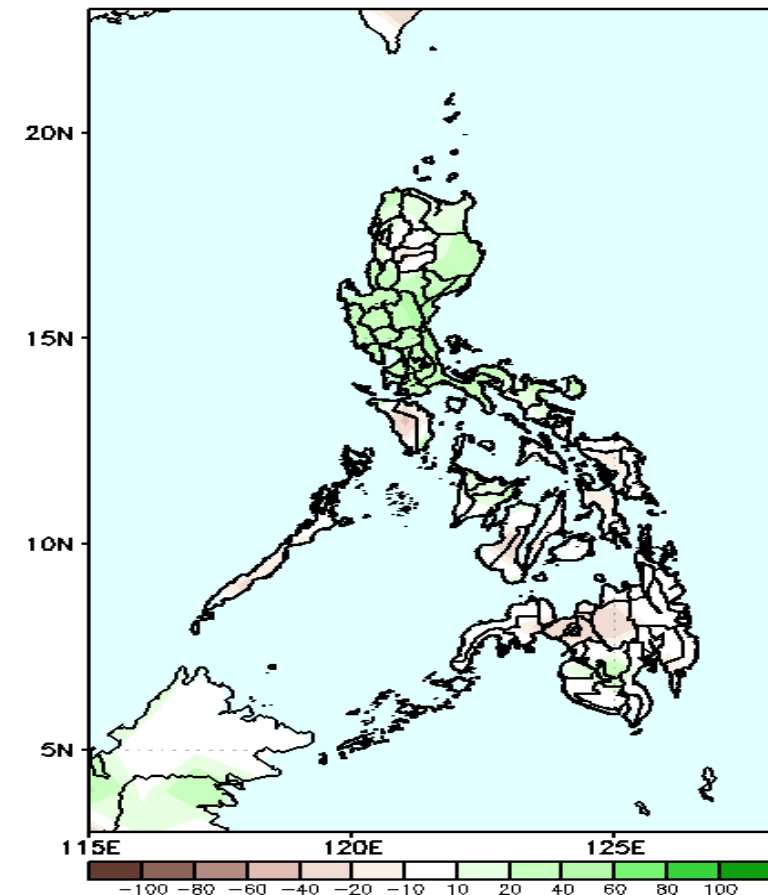


Westerly wind is forecasted to affect most parts of the country during the forecast period.

Precipitation Anomaly and Exceedance Probability > 25/50 mm

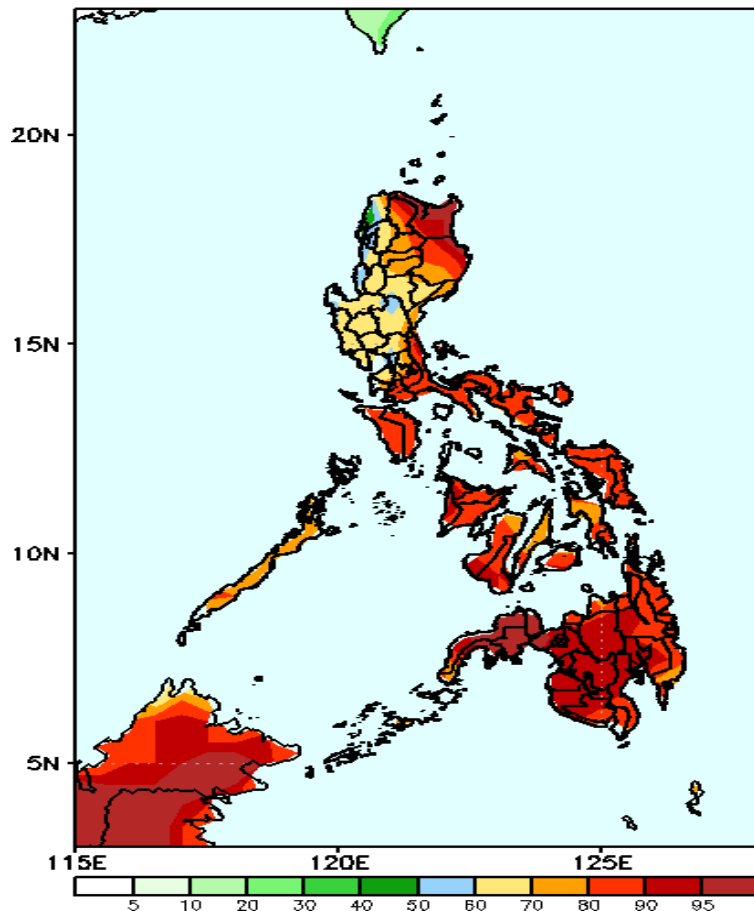
Week 2: Nov 02-08, 2022

GEFS Week-2 Precip Anomaly
Valid: 20221102 - 20221108



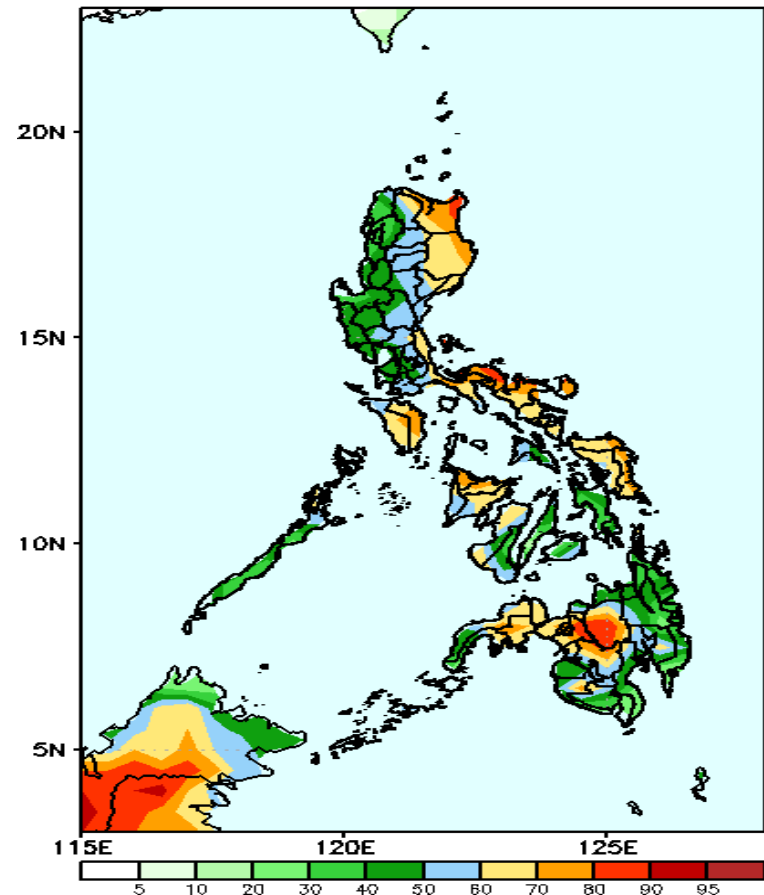
Increase of rainfall of 40-80mm is expected in most parts of Luzon while 20-40mm rainfall deficit in Visayas and Mindanao during the forecast period.

GEFS Week-2 Exceedance Prob. > 25mm
Valid: 20221102 - 20221108



High probability of rainfall to exceed 25mm in most parts of the country during the forecast period.

GEFS Week-2 Exceedance Prob. > 50mm
Valid: 20221102 - 20221108

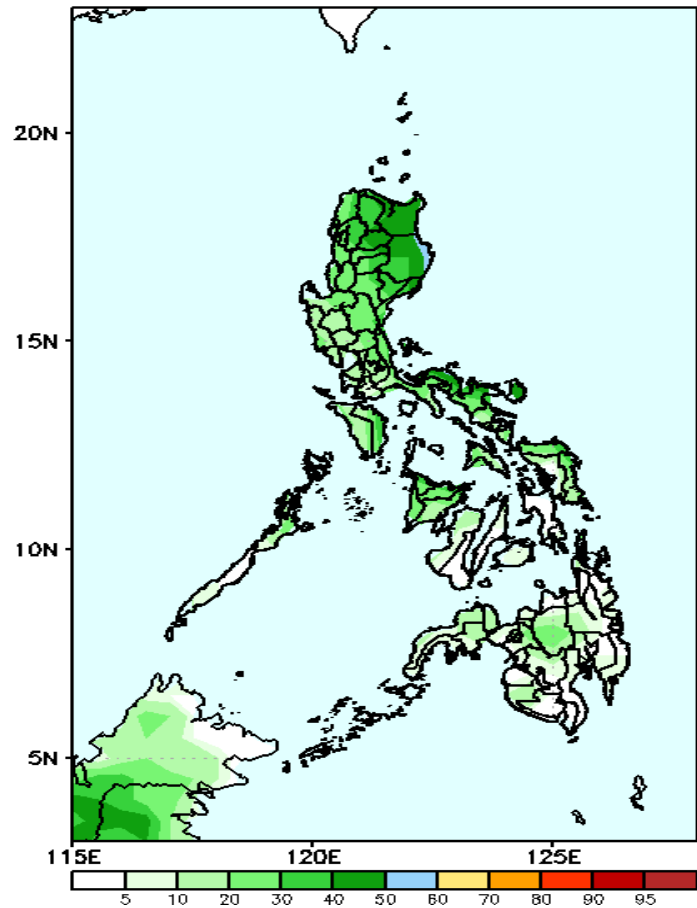


High probability to exceed 50mm of rainfall in most parts of Eastern and Southern Luzon, Western Visayas, Samar provinces, Central Mindanao and Zamboanga peninsula while less likely for the rest of the country during the forecast period.

Exceedance Probability > 100/150/200 mm

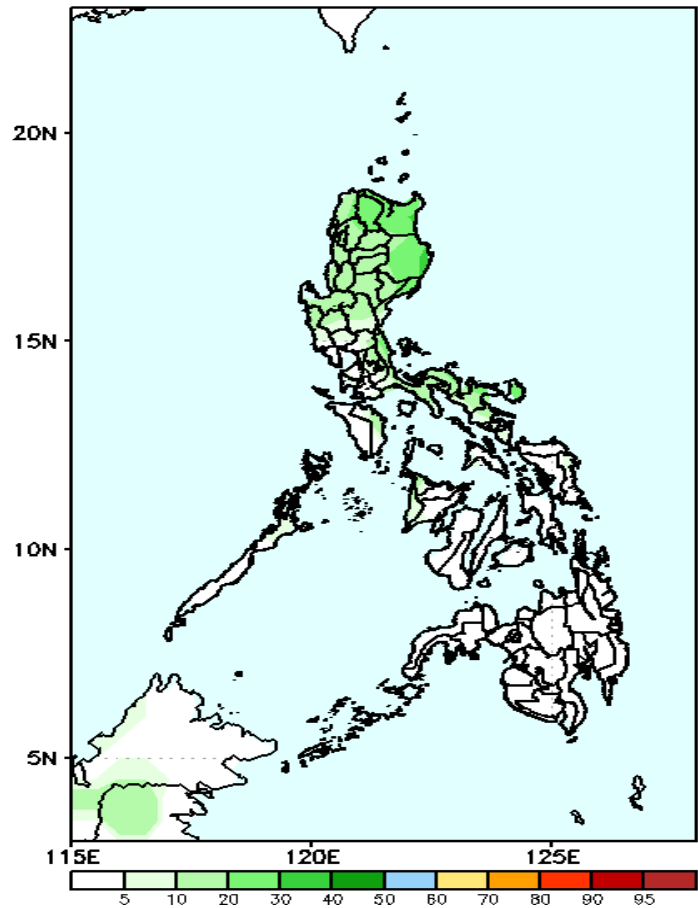
Week 2: Nov 02-08, 2022

GEFS Week-2 Exceedance Prob. > 100mm
Valid: 20221102 – 20221108



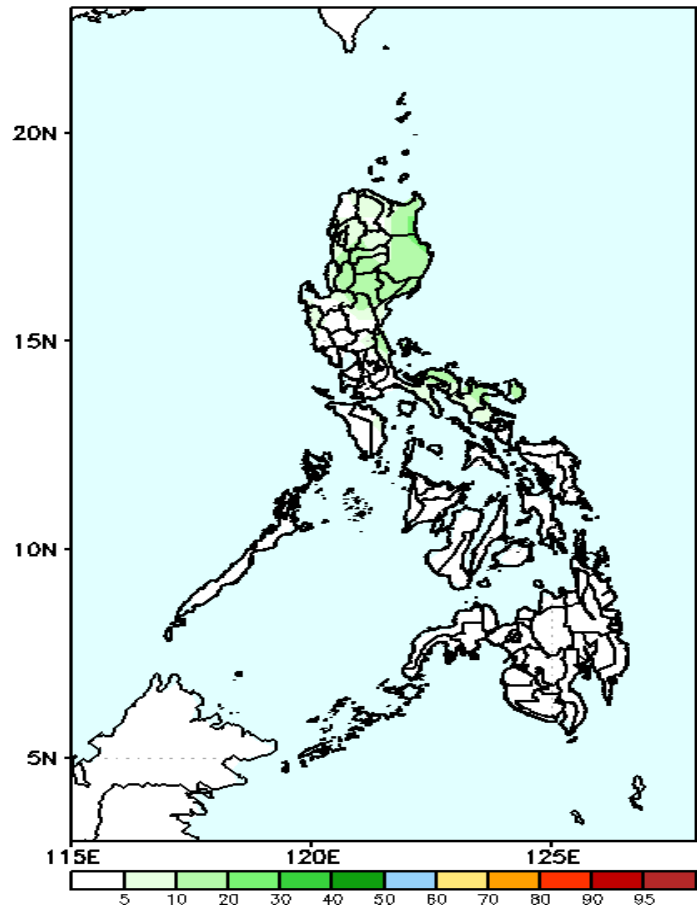
Low probability of rainfall to exceed 100mm in most parts of the country during the forecast period.

GEFS Week-2 Exceedance Prob. > 150mm
Valid: 20221102 – 20221108



Low probability of rainfall to exceed 150mm in most parts of the country during the forecast period.

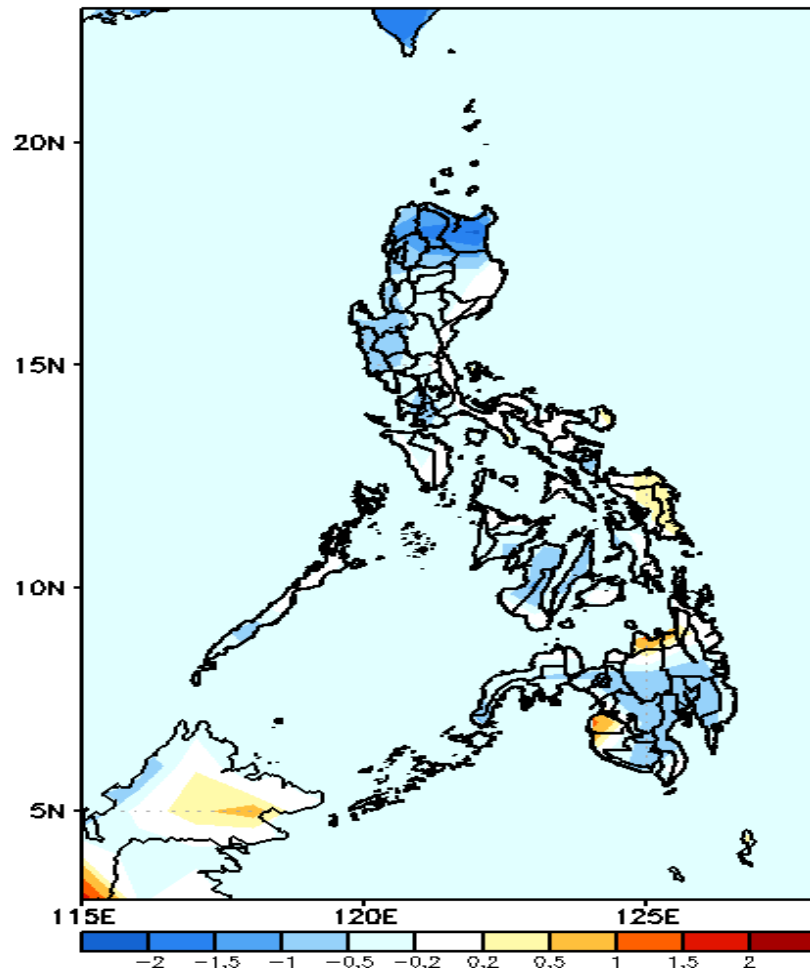
GEFS Week-2 Exceedance Prob. > 200mm
Valid: 20221102 – 20221108



Low probability of rainfall to exceed 200mm in most parts of the country during the forecast period.

GEFS Week-1 & 2 Forecasts: T2m Anomaly

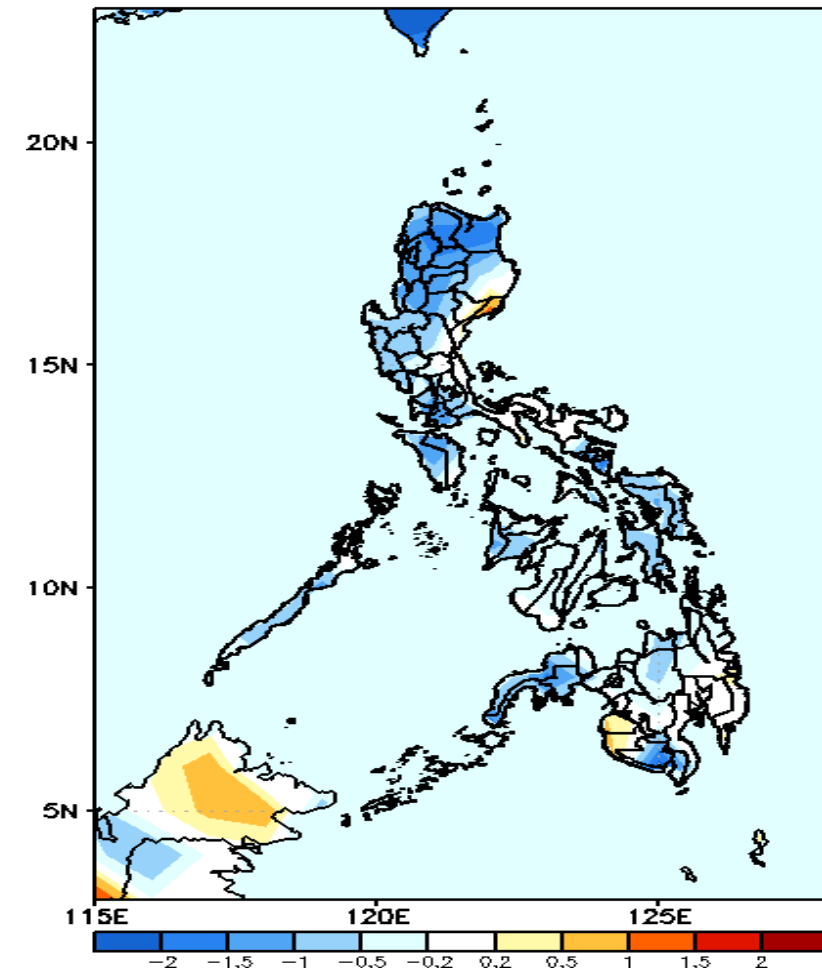
GEFS Week-1 T2m Anomaly
Valid: 20221026 - 20221101



2m Temperature Week 1: Oct 26- Nov 01, 2022

Near to cooler than average surface air temperature will likely experience in most parts of the country except in Samar provinces, Misamis Occ. and Maguindanao where slightly warmer than average surface air temperature is expected during the forecast period.

GEFS Week-2 T2m Anomaly
Valid: 20221102 - 20221108



2m Temperature Week 2: Nov 02-08, 2022

Near to cooler than average surface air temperature will likely experience in most parts of the country except in some areas in eastern Luzon, Maguindanao and Sultan Kudarat where slightly warmer than average surface air temperature is expected during the forecast period.