



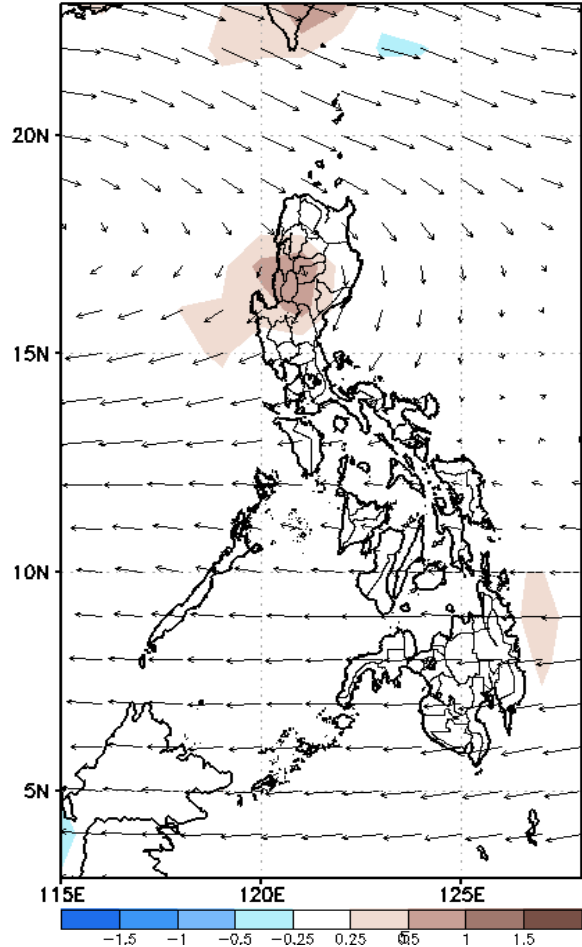
# Week 1 & Week 2 Forecast for the Philippines using GEFS Model



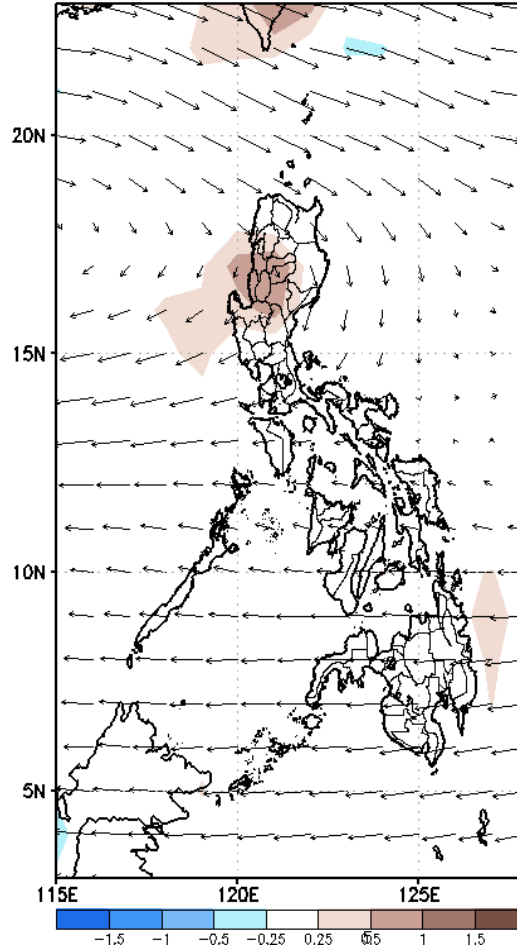
# GEFS Week-1 Forecasts: Divergence & Wind Anomaly

**Week 1: April 26 - May 02, 2021**

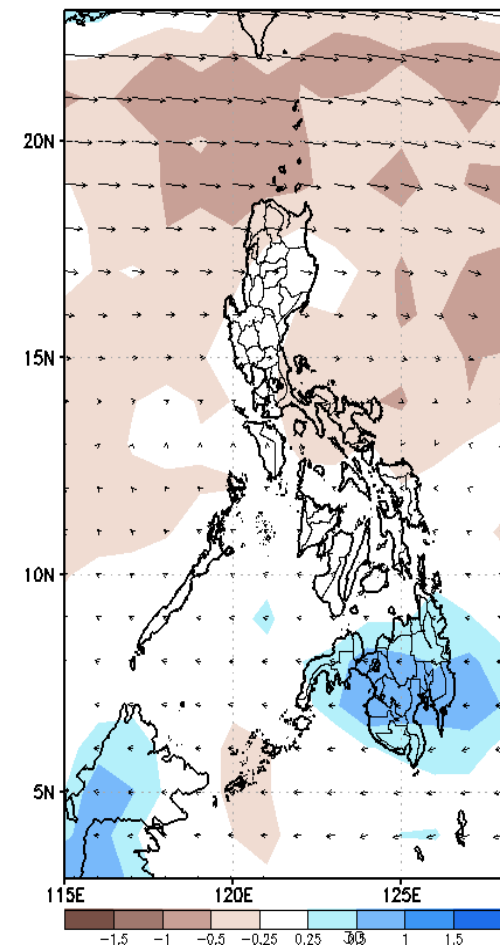
GEFS Week-1 850-hPa Divergence and Wind Anomaly  
Valid: 20210426 - 20210502



GEFS Week-1 700-hPa Divergence and Wind Anomaly  
Valid: 20210426 - 20210502



GEFS Week-1 200-hPa Divergence and Wind Anomaly  
Valid: 20210426 - 20210502

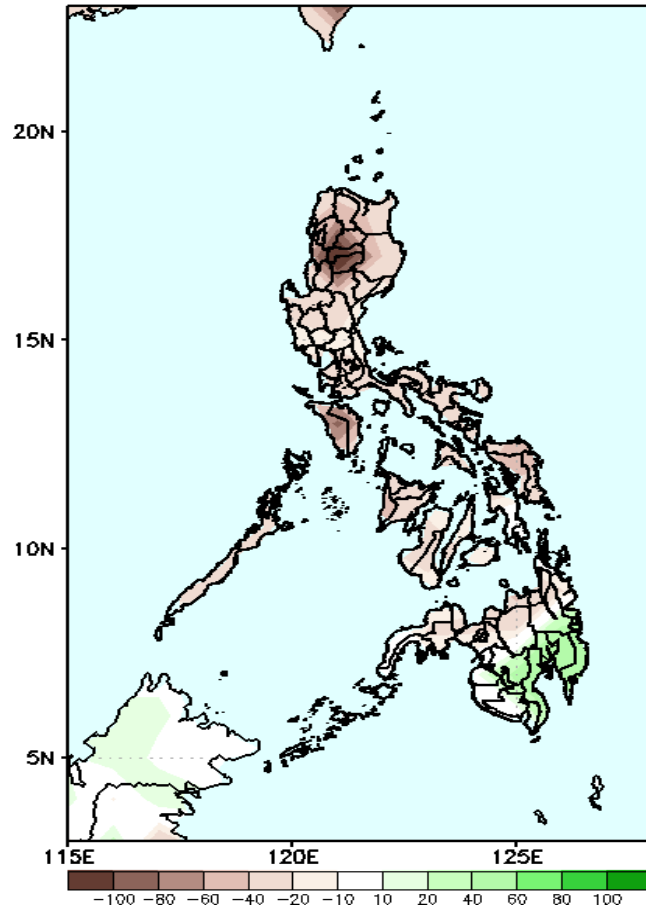


Upper and low level Divergence suggest likelihood of precipitation in most parts of Mindanao. Easterlies affecting most parts of the country attributing to warmer temperatures during the forecast period. Meanwhile a cyclonic circulation was observe near eastern Philippines.

# Precipitation Anomaly and Exceedance Probability > 25/50 mm

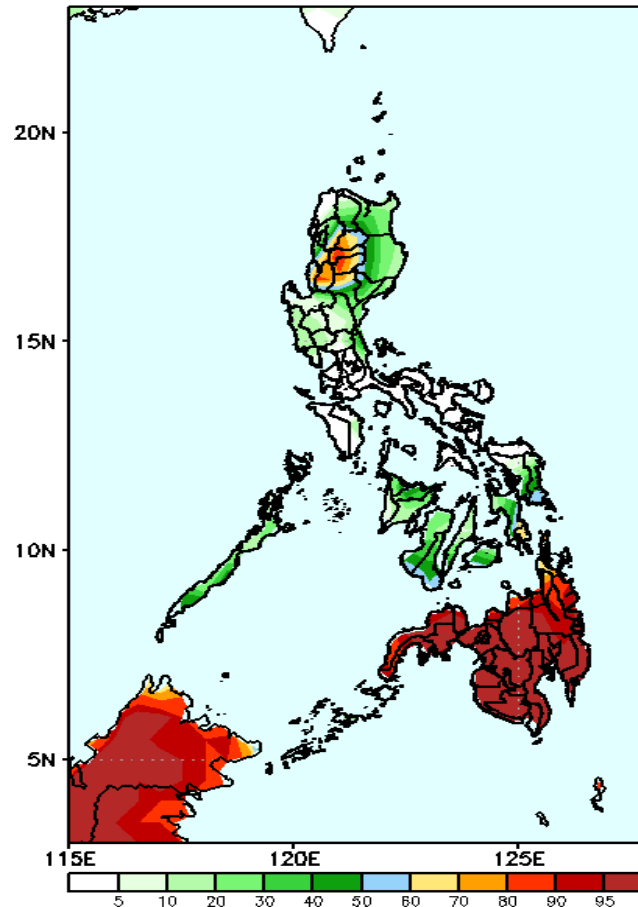
**Week 1: Apr 26- May 02, 2021**

GEFS Week-1 Precip Anomaly  
Valid: 20210426 - 20210502



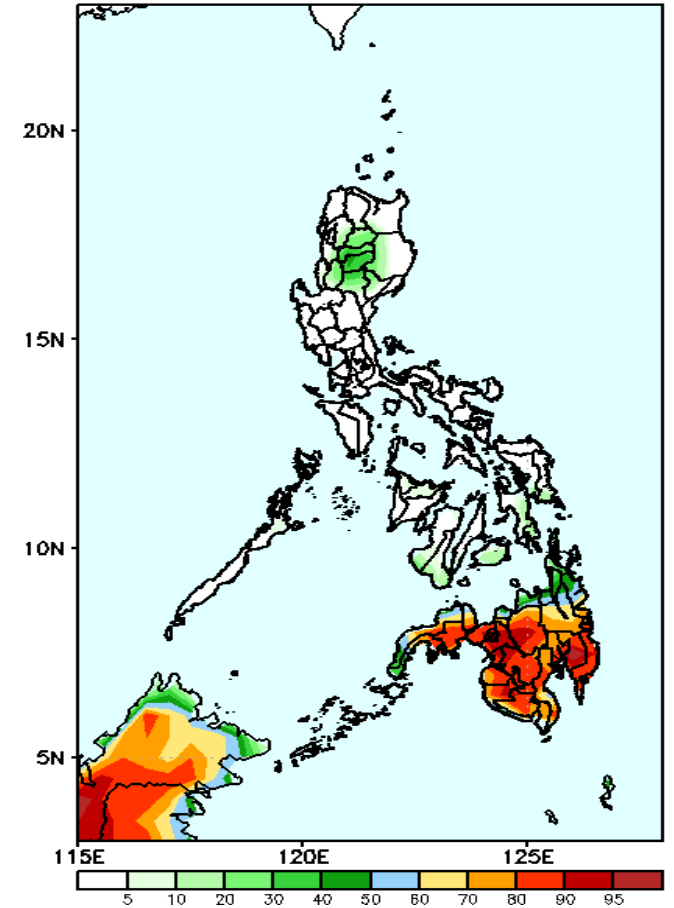
Rainfall deficit of 40-100mm is expected in most parts of the country is expected except in southern Mindanao where above normal rainfall is more likely during the forecast period.

GEFS Week-1 Exceedance Prob. > 25mm  
Valid: 20210426 - 20210502



High probability of rainfall to exceed 25mm in Cordillera Region and most parts of Mindanao while less likely for the rest of the country during the forecast period.

GEFS Week-1 Exceedance Prob. > 50mm  
Valid: 20210426 - 20210502



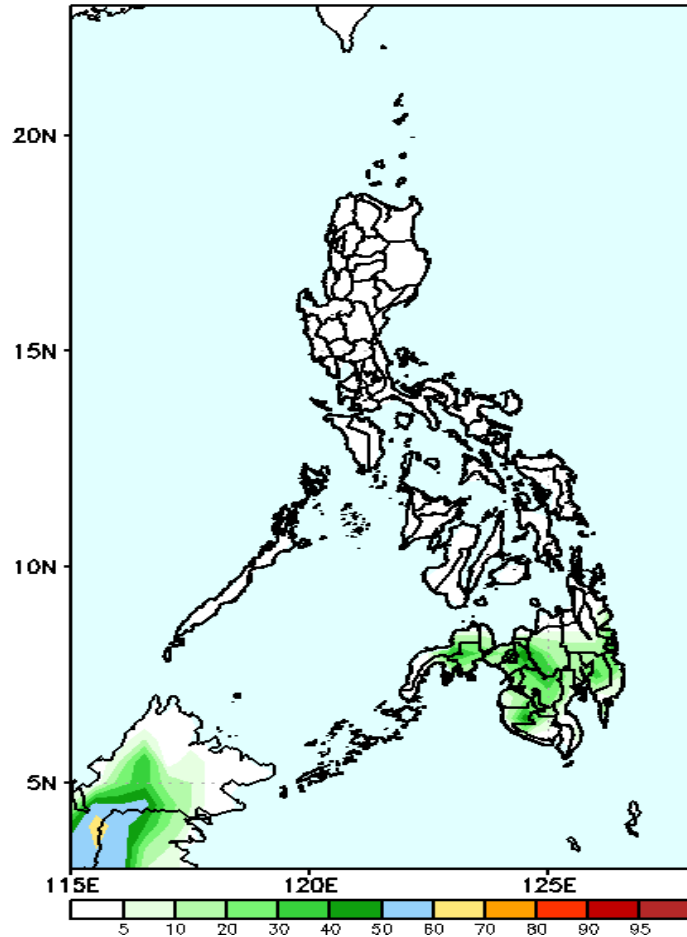
High probability of rainfall to exceed 50mm in most parts of Mindanao while less likely for the rest of the country during the forecast period.



# Exceedance Probability > 100/150/200 mm

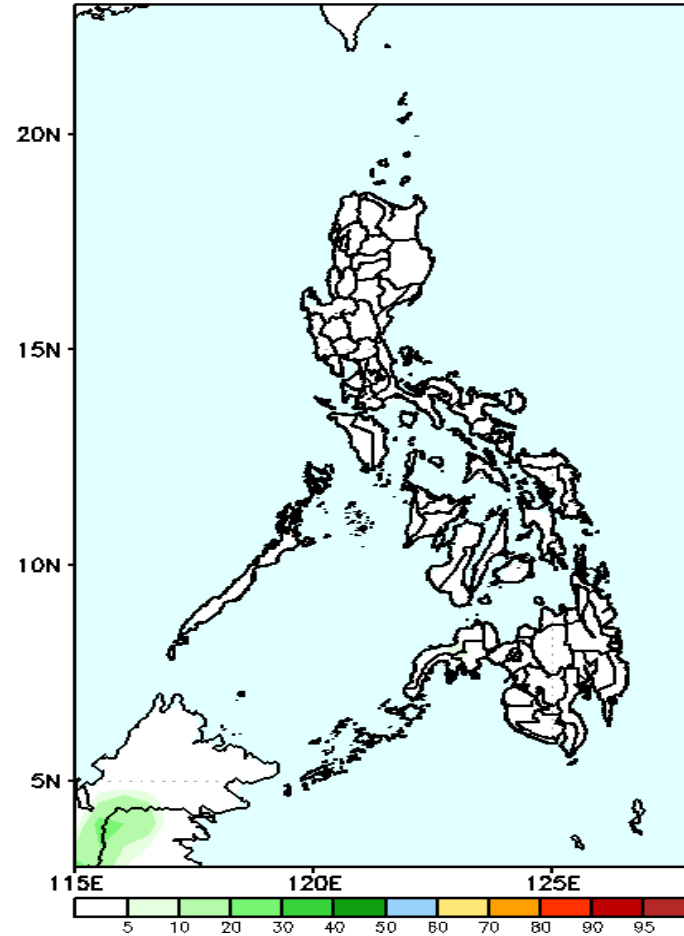
## Week 1: Apr 26- May 02, 2021

GEFS Week-1 Exceedance Prob. > 100mm  
Valid: 20210426 - 20210502



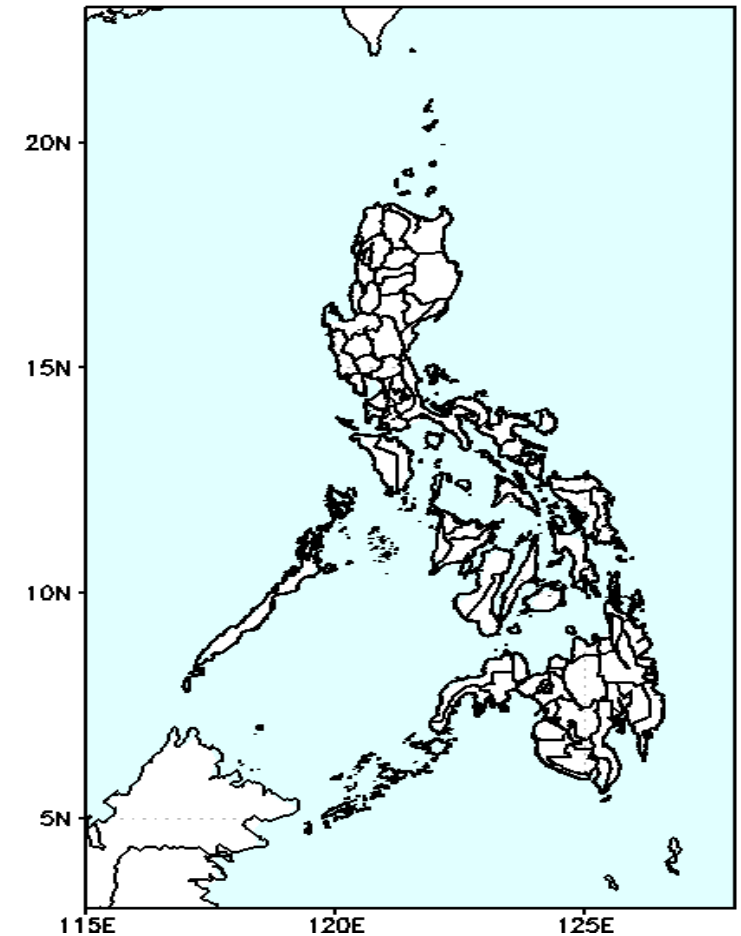
Less probability of rainfall to exceed 100mm in most parts of the country during the forecast period.

GEFS Week-1 Exceedance Prob. > 150mm  
Valid: 20210426 - 20210502



Less probability of rainfall to exceed 150mm in most parts of the country during the forecast period.

GEFS Week-1 Exceedance Prob. > 200mm  
Valid: 20210426 - 20210502

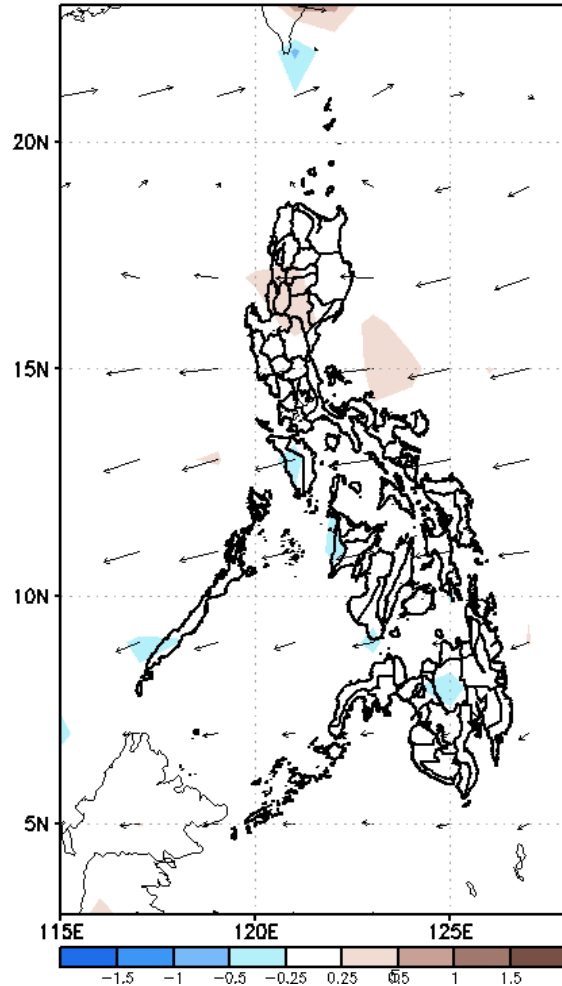


Less probability of rainfall to exceed 200mm in most parts of the country during the forecast period.

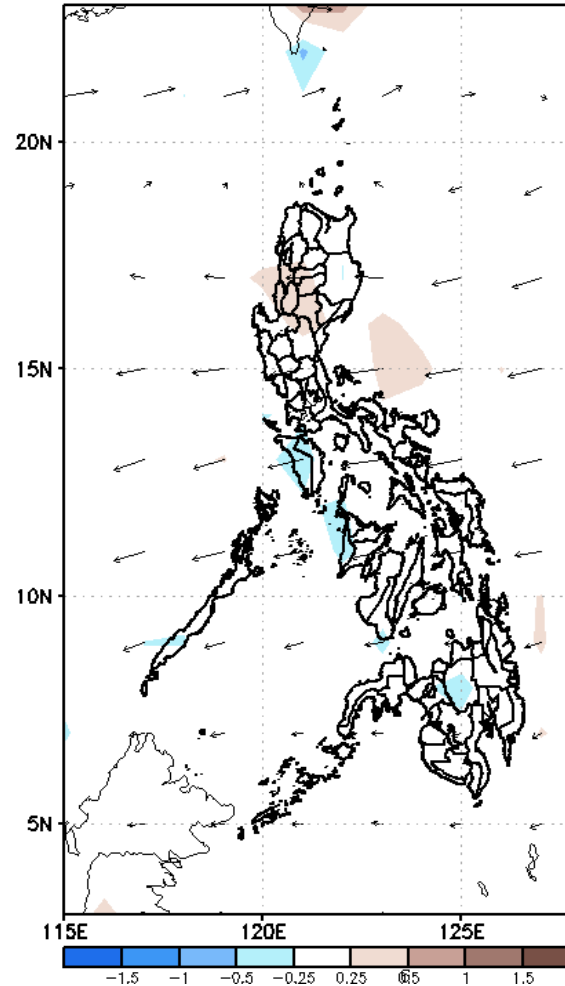
# GEFS Week-2 Forecasts: Divergence & Wind Anomaly

## Week 2: May 03 – 09, 2021

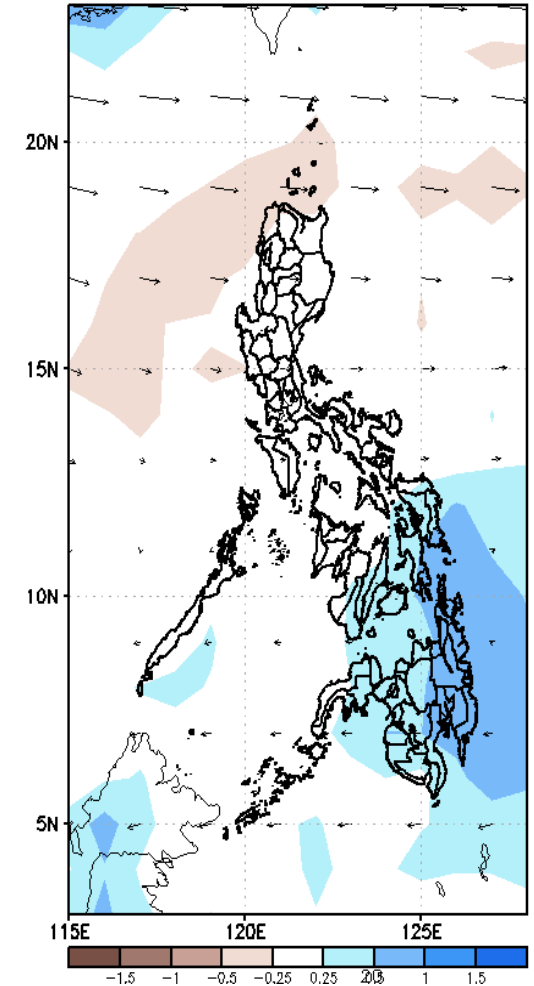
GEFS Week-2 850-hPa Divergence and Wind Anomaly  
Valid: 20210503 – 20210509



GEFS Week-2 700-hPa Divergence and Wind Anomaly  
Valid: 20210503 – 20210509



GEFS week-2 200-hPa Divergence and Wind Anomaly  
Valid: 20210503 – 20210509

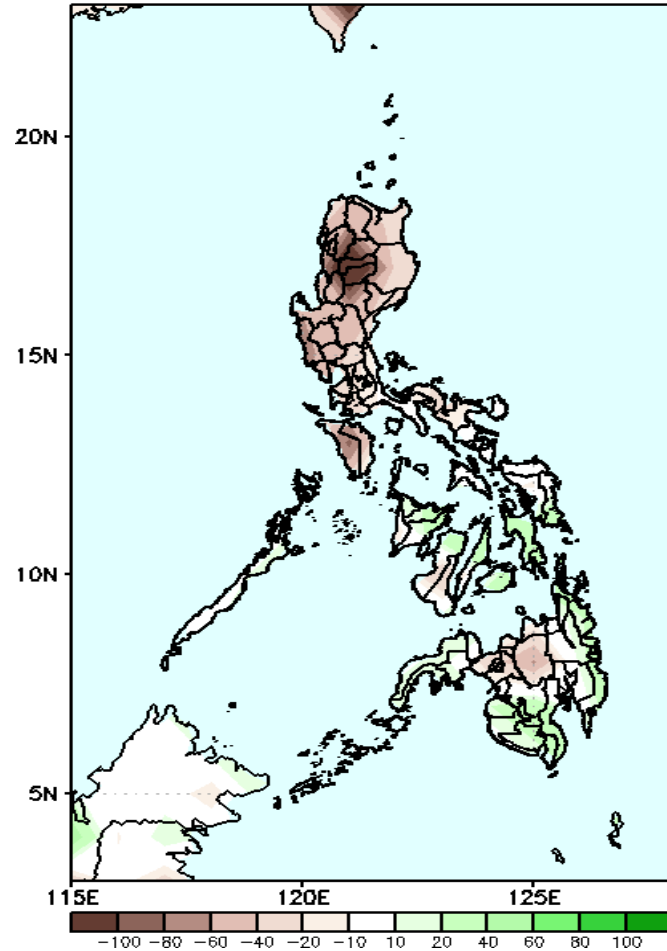


Upper and low level Divergence suggest likelihood of precipitation in Eastern and Central Visayas and most parts of Mindanao. Easterlies affecting most parts of the country attributing to warmer temperatures during the forecast period.

# Precipitation Anomaly and Exceedance Probability > 25/50 mm

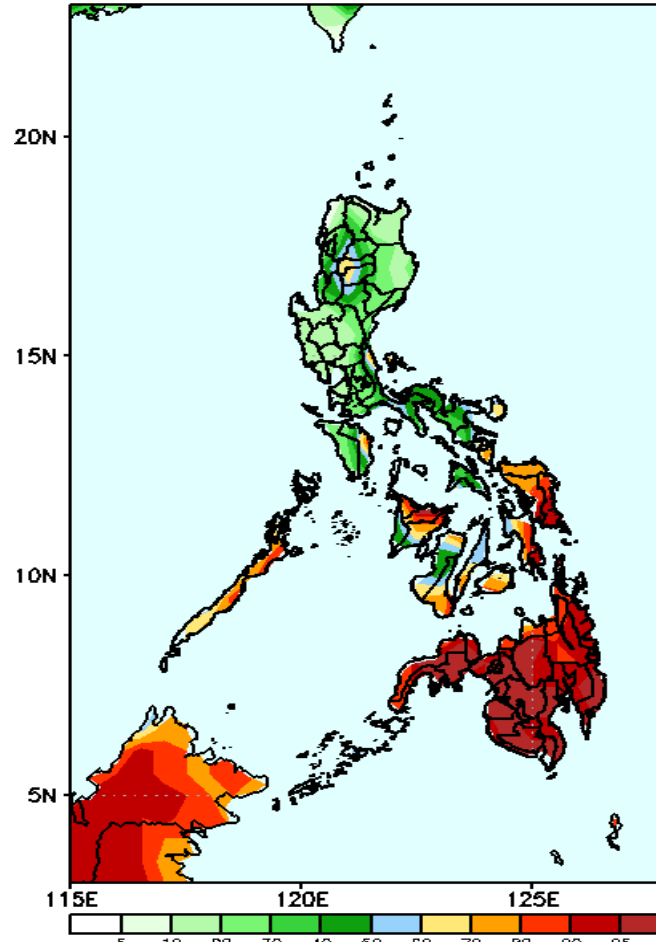
## Week 2: May 03- May 09, 2021

GEFS Week-2 Precip. Anomaly  
Valid: 20210503 - 20210509



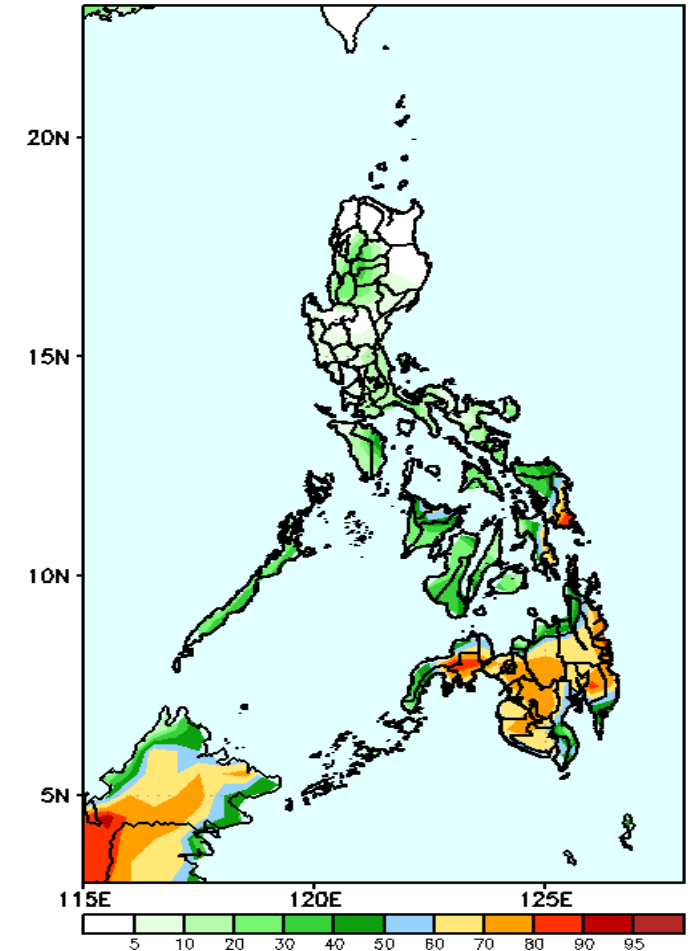
Rainfall deficit of up to 100mm is expected in most parts of Luzon during the forecast period.

GEFS Week-2 Exceedance Prob. > 25mm  
Valid: 20210503 - 20210509



High probability of rainfall to exceed 25mm in most parts of Visayas and Mindanao is expected while less likely for the rest of the country during the forecast period.

GEFS Week-2 Exceedance Prob. > 50mm  
Valid: 20210503 - 20210509



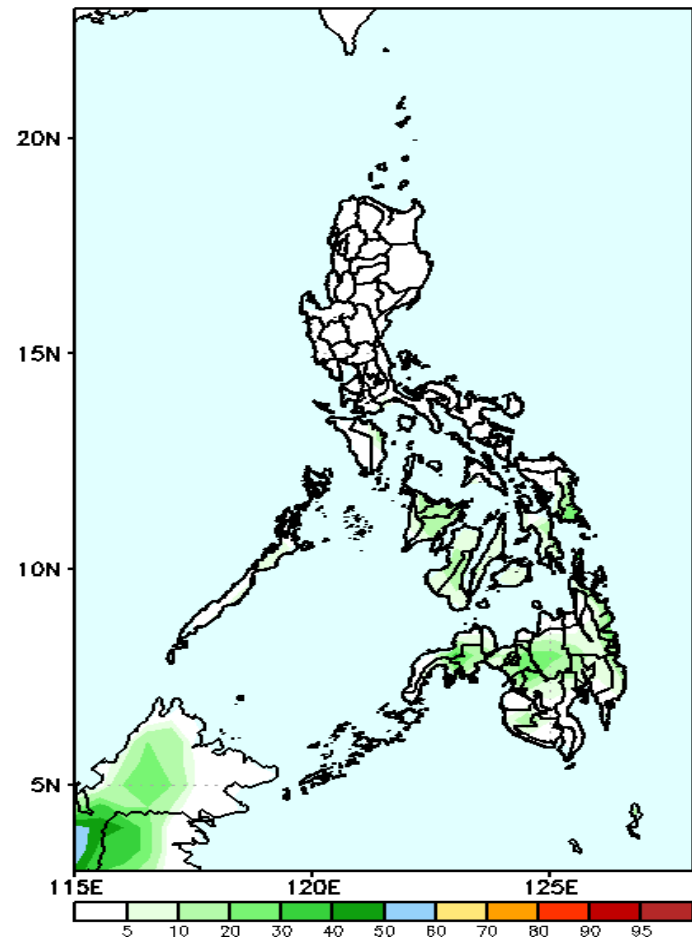
60-80% probability of rainfall to exceed 50mm in Eastern Samar and most parts of Mindanao while less likely for the rest of the country during the forecast period.



# Exceedance Probability > 100/150/200 mm

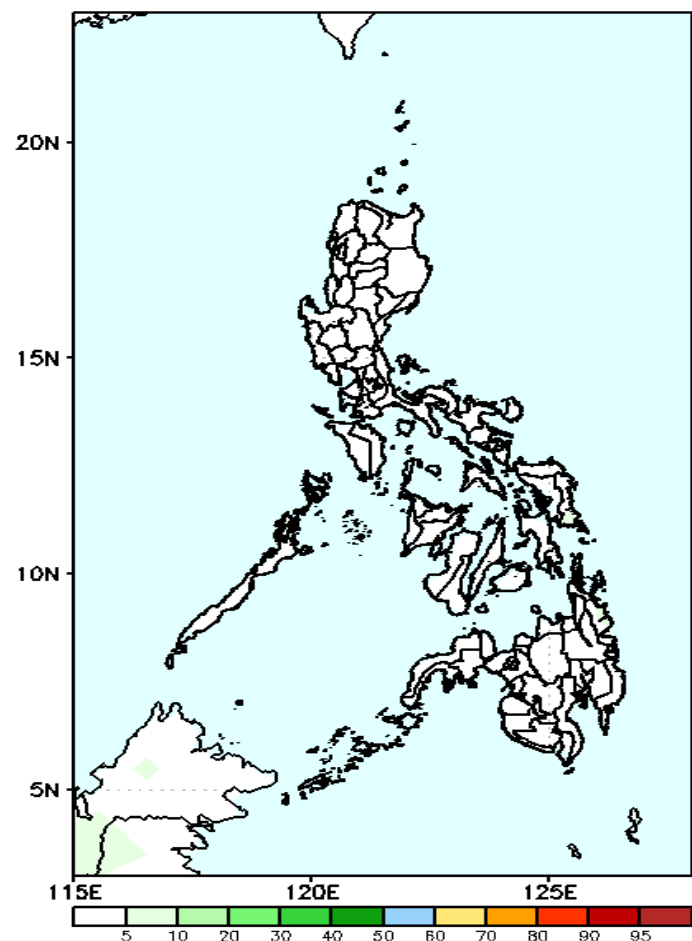
Week 2: May 03- May 09, 2021

GEFS Week-2 Exceedance Prob. > 100mm  
Valid: 20210503 – 20210509



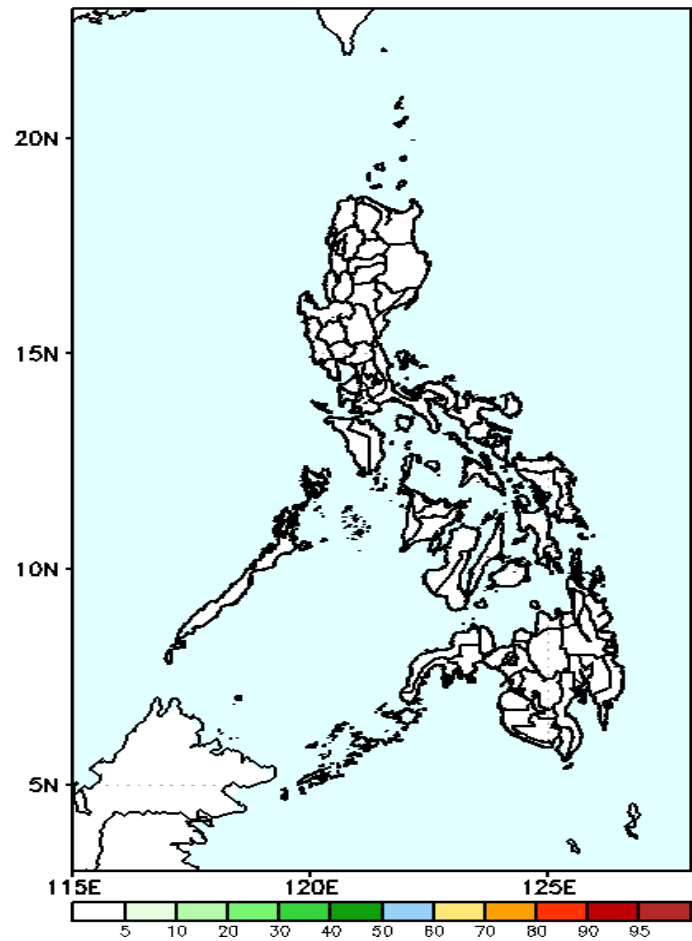
Less probability of rainfall to exceed 100mm in most parts of the country during the forecast period.

GEFS Week-2 Exceedance Prob. > 150mm  
Valid: 20210503 – 20210509



Less probability of rainfall to exceed 150mm in most parts of the country during the forecast period.

GEFS Week-2 Exceedance Prob. > 200mm  
Valid: 20210503 – 20210509

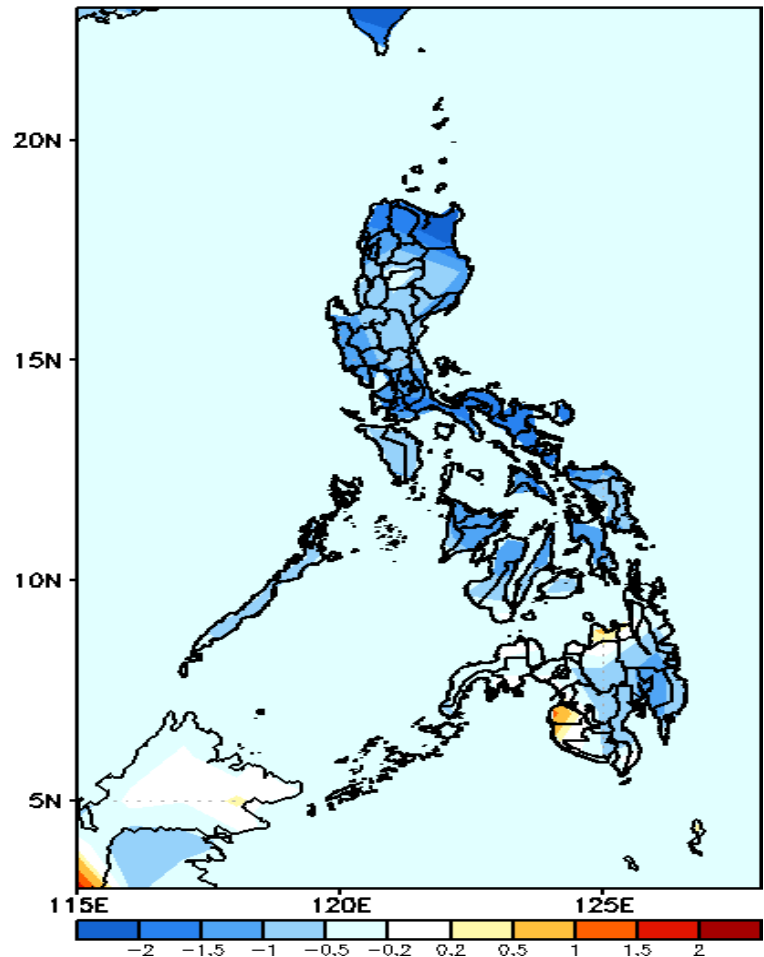


Less probability of rainfall to exceed 200mm in most parts of the country during the forecast period.



# GEFS Week-1 & 2 Forecasts: T2m Anomaly

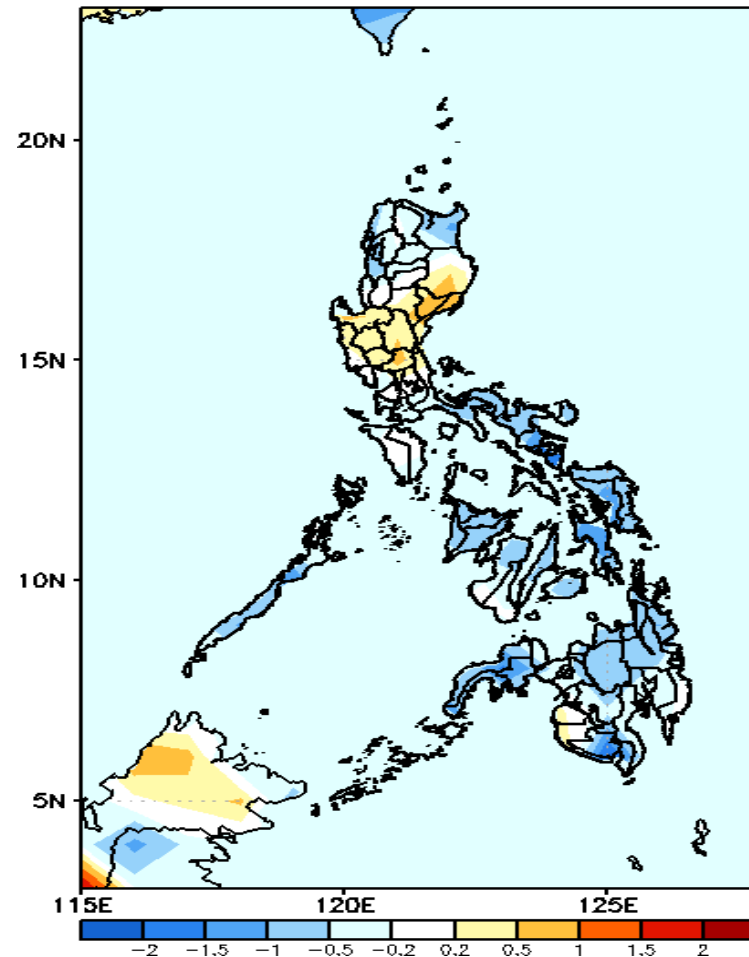
GEFS Week-1 T2m Anomaly  
Valid: 20210426 - 20210502



**2m Temperature Week 1: Apr 26- May 02, 2021**

Slightly cooler to cooler than average surface air temperature will likely experience in most parts of the country during the forecast period.

GEFS Week-2 T2m Anomaly  
Valid: 20210503 - 20210509



**2m Temperature Week 2: May 03- May 09, 2021**

Slightly cooler to cooler than average surface air temperature will likely experience in most parts Visayas and Mindanao while Luzon will likely receive average to slightly warmer temperature during the forecast period.