



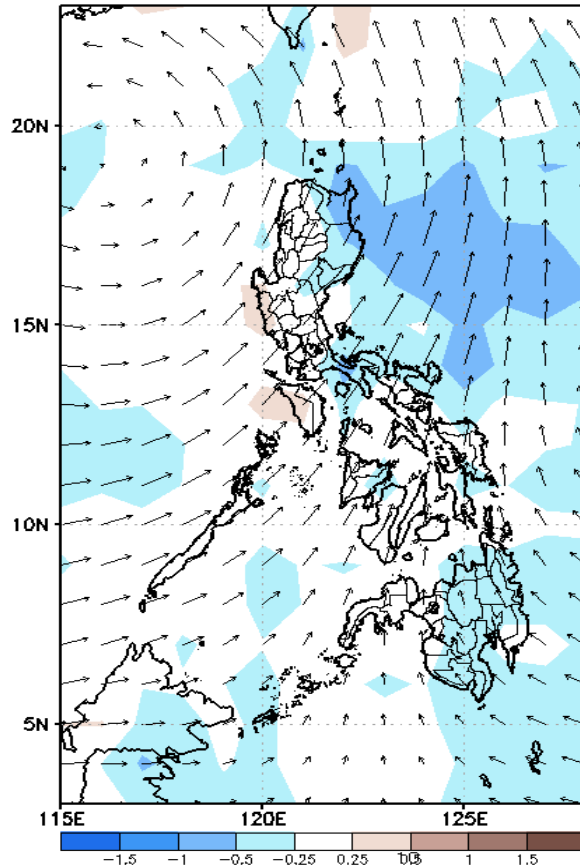
Week 1 & Week 2 Forecast for the Philippines using GEFS Model



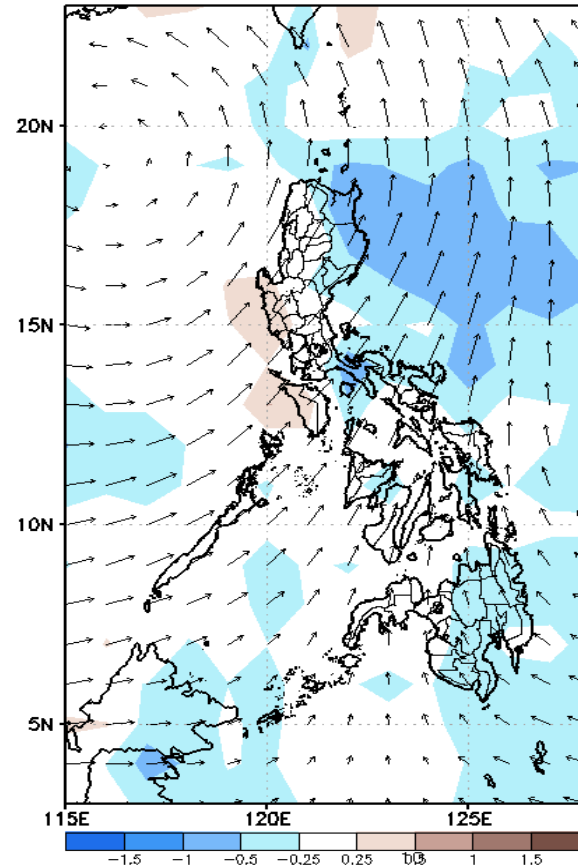
GEFS Week-1 Forecasts: Wind Anomaly Forecast

Week 1: Jun 27- Jul 03, 2022

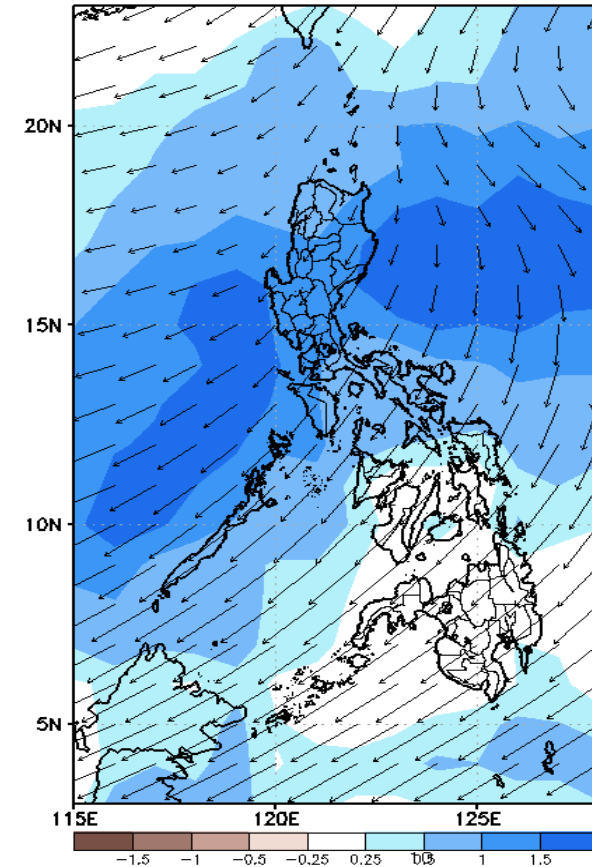
GEFS Week-1 850-hPa Divergence and Wind Anom
Valid: 20220627 - 20220703



GEFS Week-1 700-hPa Divergence and Wind Anom
Valid: 20220627 - 20220703



GEFS Week-1 200-hPa Divergence and Wind Anom
Valid: 20220627 - 20220703

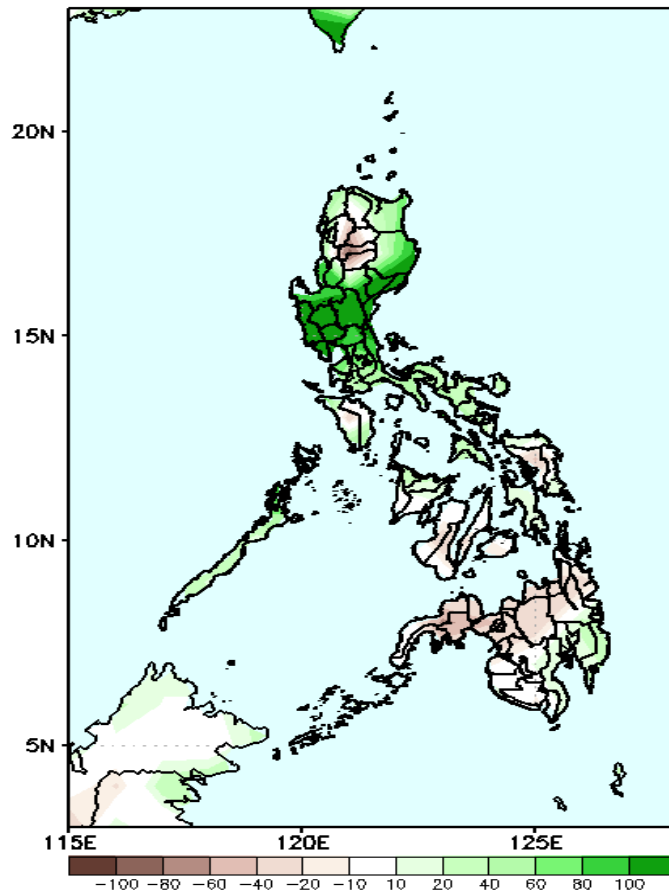


Southwest monsoon affecting most parts of Luzon and western sections of Visayas and Mindanao while Easterlies affecting the rest of the country during the forecast period.

Precipitation Anomaly and Exceedance Probability > 25/50 mm

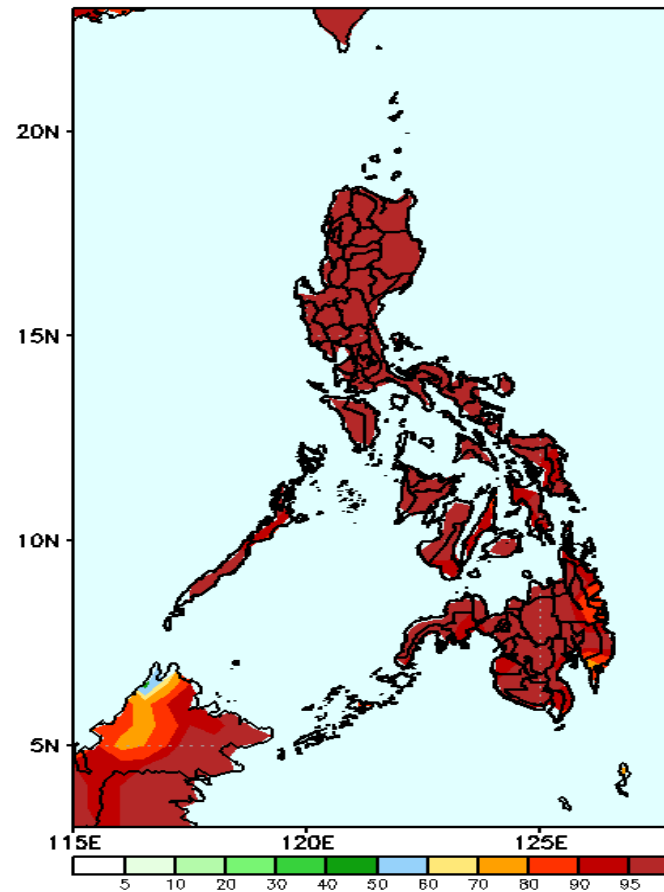
Week 1: Jun 27- Jul 03, 2022

GEFS Week-1 Precip Anomaly
Valid: 20220627 - 20220703



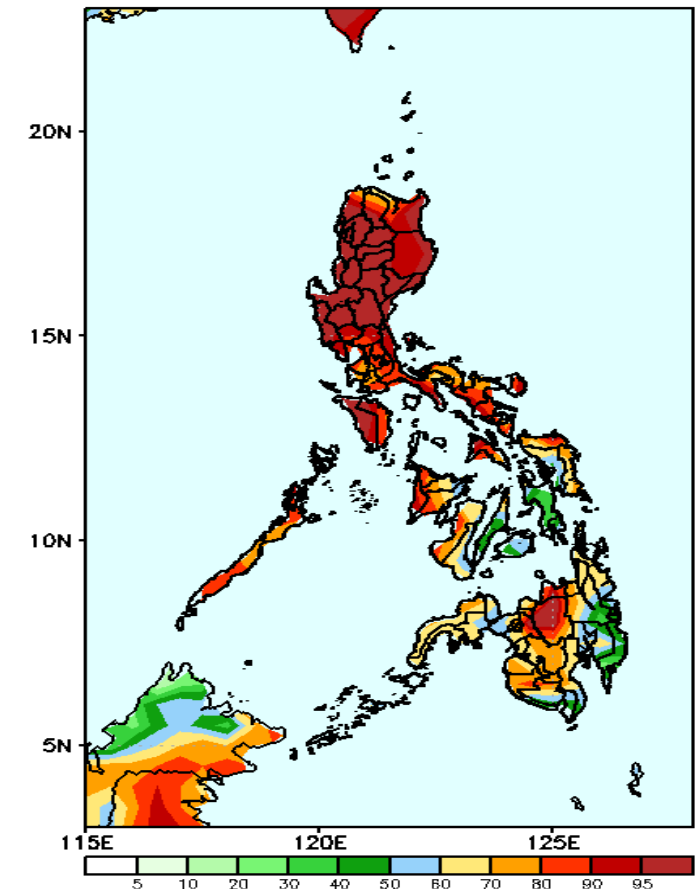
Increase of rainfall of more than 100mm is expected in most parts of Central Luzon, Pangasinan and Quirino, 40-100mm for the rest of Luzon and Davao Region while 20-50mm rainfall deficit in most parts of Visayas and Mindanao during the forecast period.

GEFS Week-1 Exceedance Prob. > 25mm
Valid: 20220627 - 20220703



High probability of rainfall to exceed 25mm in most parts of the country during the forecast period.

GEFS Week-1 Exceedance Prob. > 50mm
Valid: 20220627 - 20220703



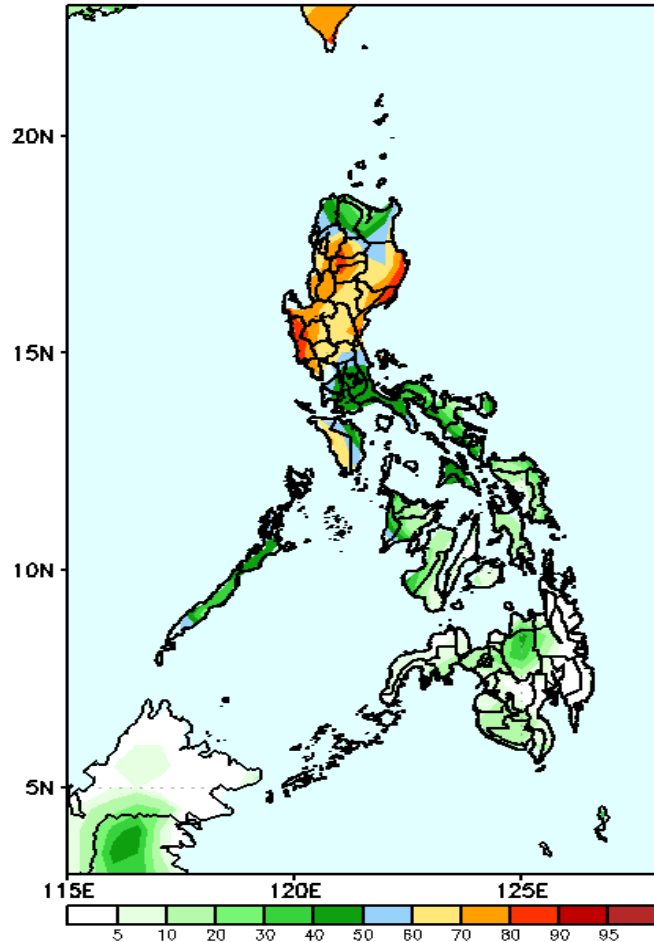
High probability of rainfall to exceed 50mm in most parts of the country except in Cebu, Bohol, Leyte provinces, and Davao Region during the forecast period.



Exceedance Probability > 100/150/200 mm

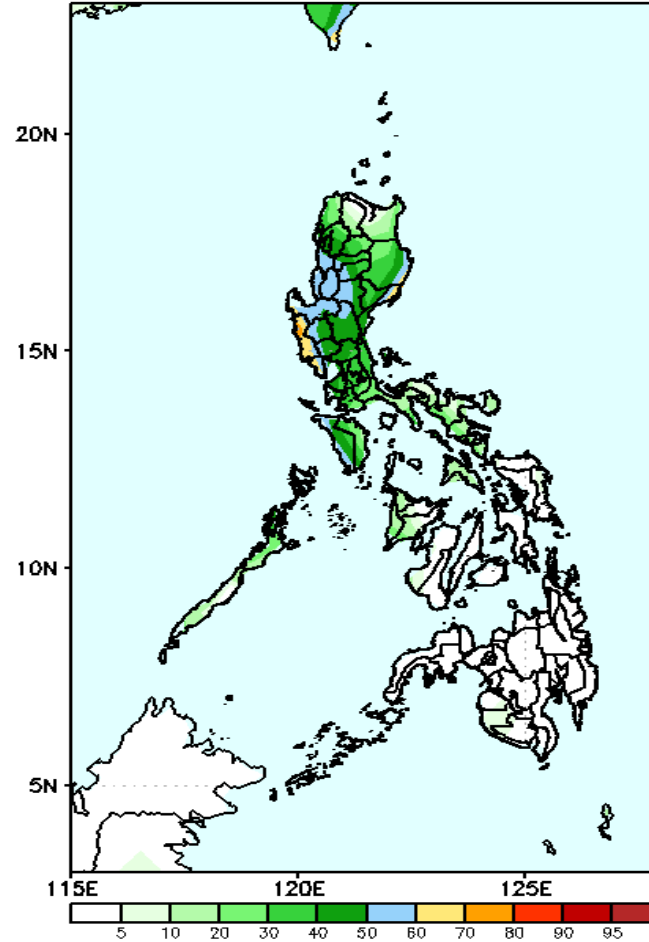
Week 1: Jun 27- Jul 03, 2022

GEFS Week-1 Exceedance Prob. > 100mm
Valid: 20220627 – 20220703



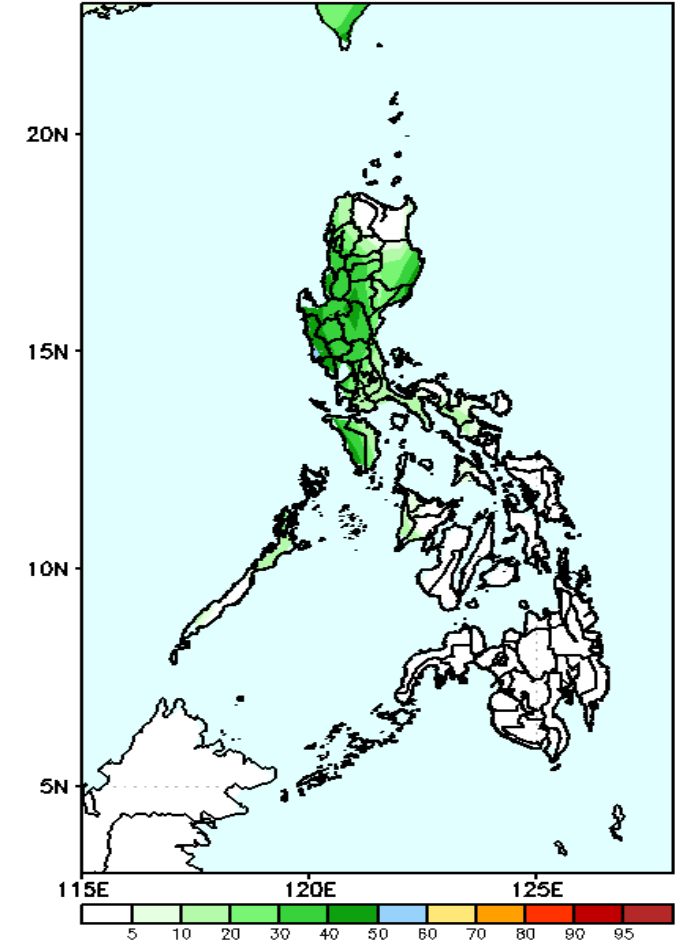
60-90% probability of rainfall to exceed 100mm in most parts of Luzon while less chance in Visayas and Mindanao during the forecast period.

GEFS Week-1 Exceedance Prob. > 150mm
Valid: 20220627 – 20220703



Low probability of rainfall to exceed 150mm in most parts of the country during the forecast period.

GEFS Week-1 Exceedance Prob. > 200mm
Valid: 20220627 – 20220703



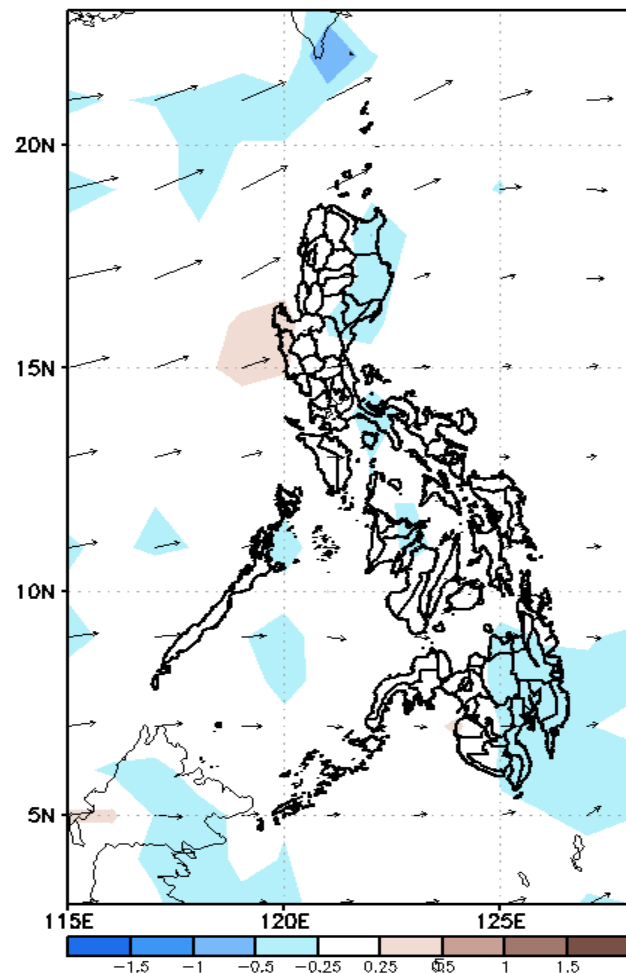
Low probability of rainfall to exceed 200mm in most parts of the country during the forecast period.



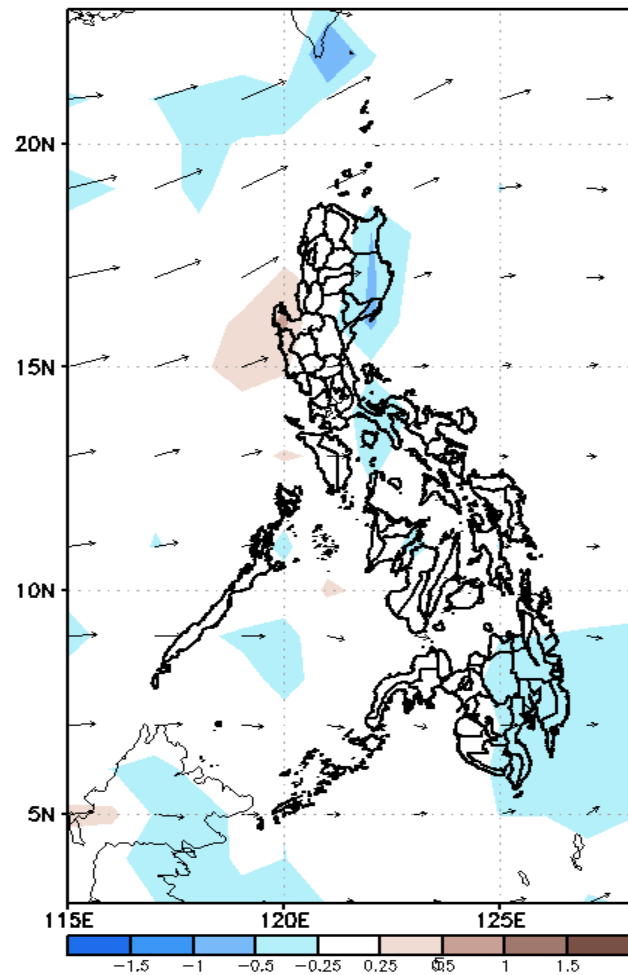
GEFS Week-2 Forecasts: Wind Anomaly Forecast

Week 2: Jul 04-10, 2022

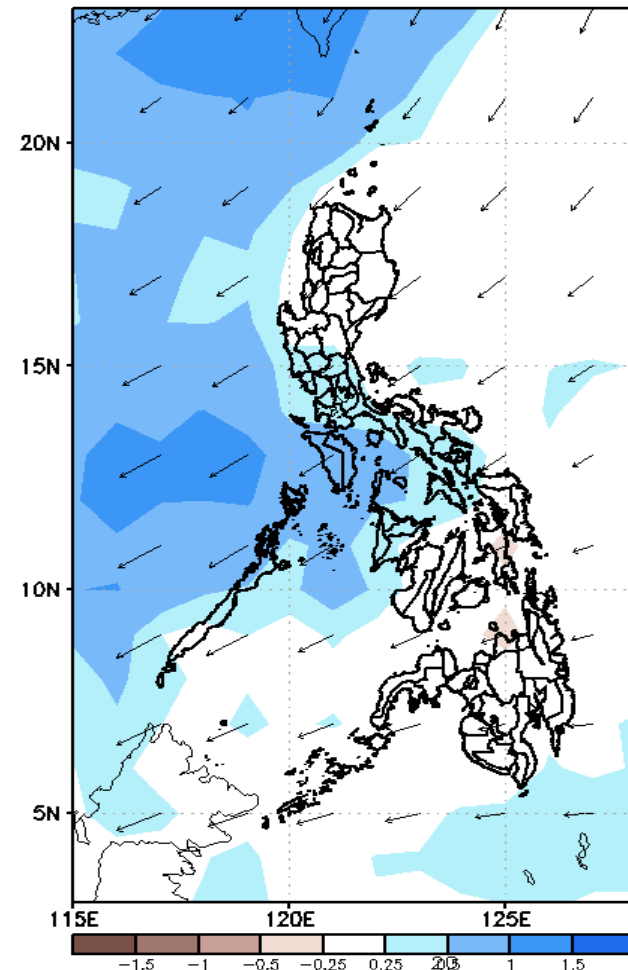
GEFS Week-2 850-hPa Divergence and Wind Anom
Valid: 20220704 - 20220710



GEFS Week-2 700-hPa Divergence and Wind Anom
Valid: 20220704 - 20220710



GEFS week-2 200-hPa Divergence and Wind Anom
Valid: 20220704 - 20220710

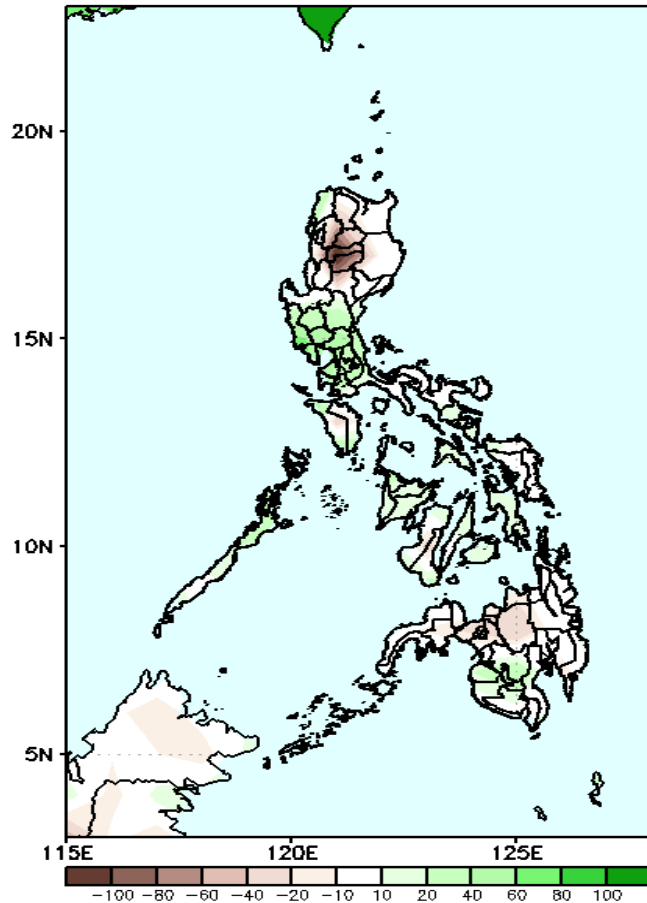


Southwest monsoon affecting most parts of Luzon and western sections of Visayas and Mindanao while Easterlies affecting the rest of the country during the forecast period.

Precipitation Anomaly and Exceedance Probability > 25/50 mm

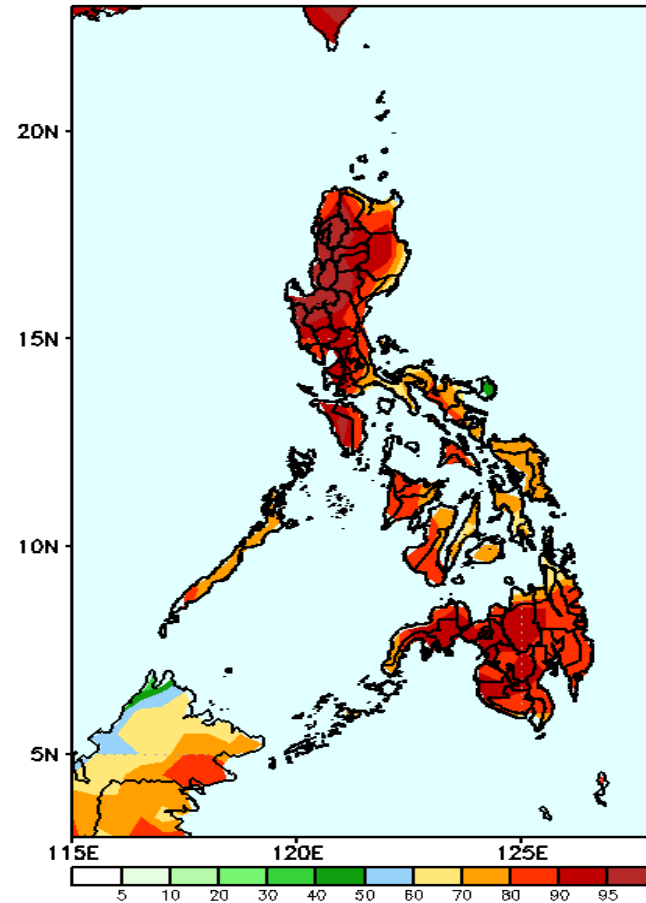
Week 2: Jul 04-10, 2022

GEFS Week-2 Precip. Anomaly
Valid: 20220704 - 20220710



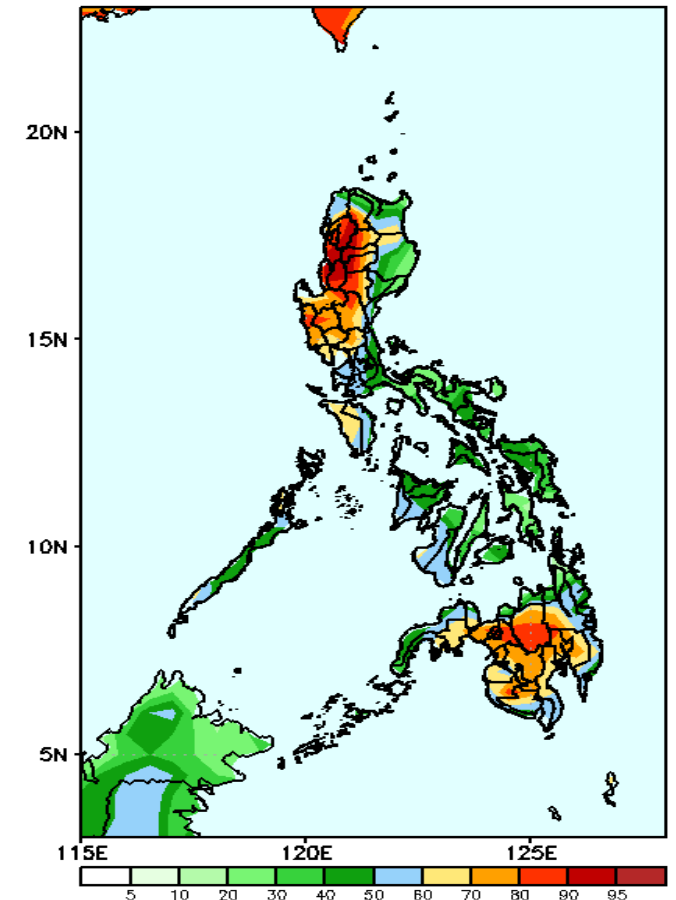
Rainfall deficit of 40-80mm is expected in Cordillera Region and Bukidnon while 40-60mm increase of rainfall in Central and Southern Luzon during the forecast period.

GEFS Week-2 Exceedance Prob. > 25mm
Valid: 20220704 - 20220710



High probability of rainfall to exceed 25mm in most parts of the country during the forecast period.

GEFS Week-2 Exceedance Prob. > 50mm
Valid: 20220704 - 20220710

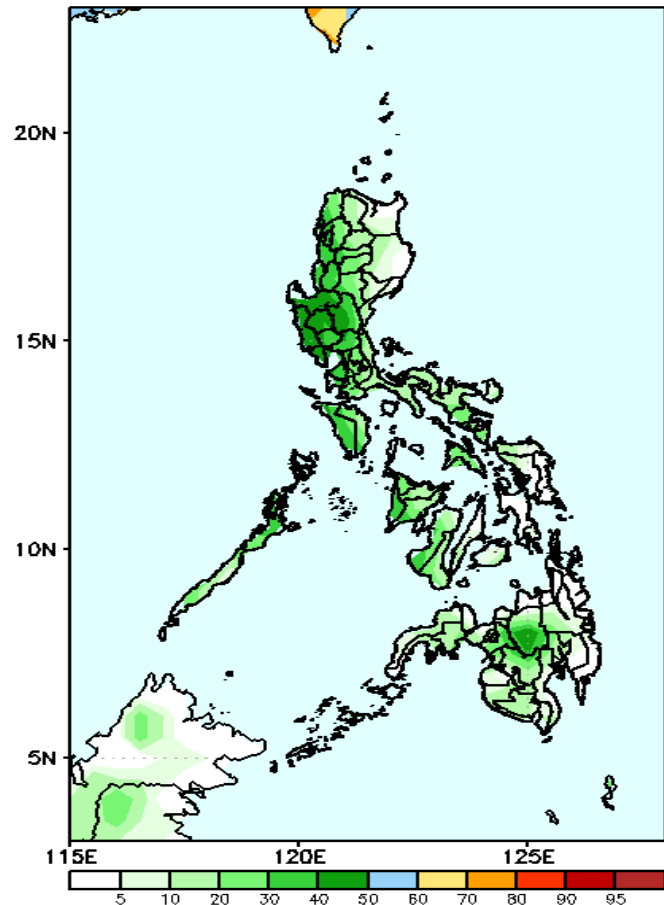


High probability of rainfall to exceed 50mm in most parts of Ilocos & Cordillera Region, Central Luzon and most parts of Mindanao while less chance for the rest of the country during the forecast period

Exceedance Probability > 100/150/200 mm

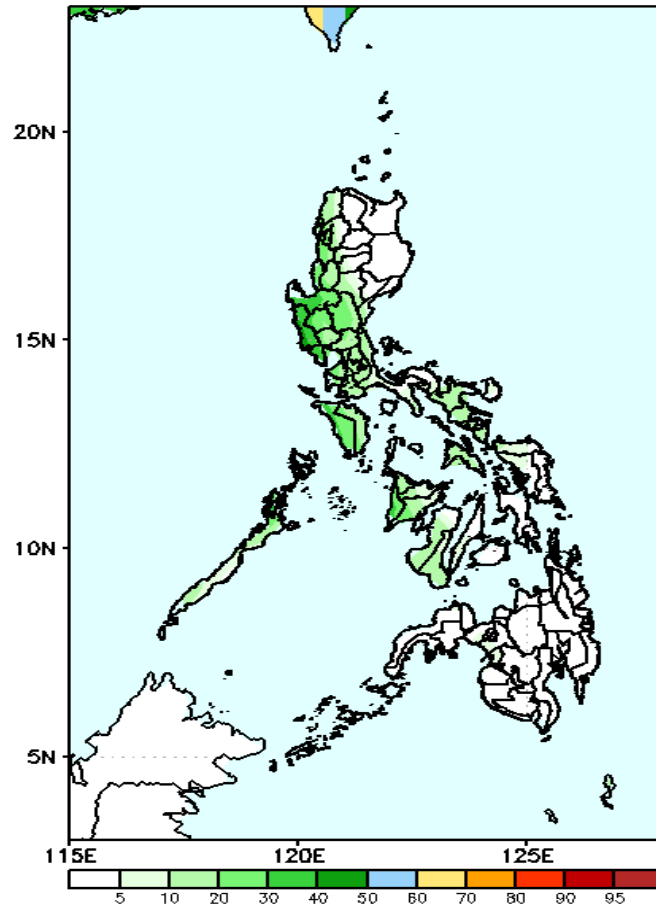
Week 2: Jul 04-10, 2022

GEFS Week-2 Exceedance Prob. > 100mm
Valid: 20220704 – 20220710



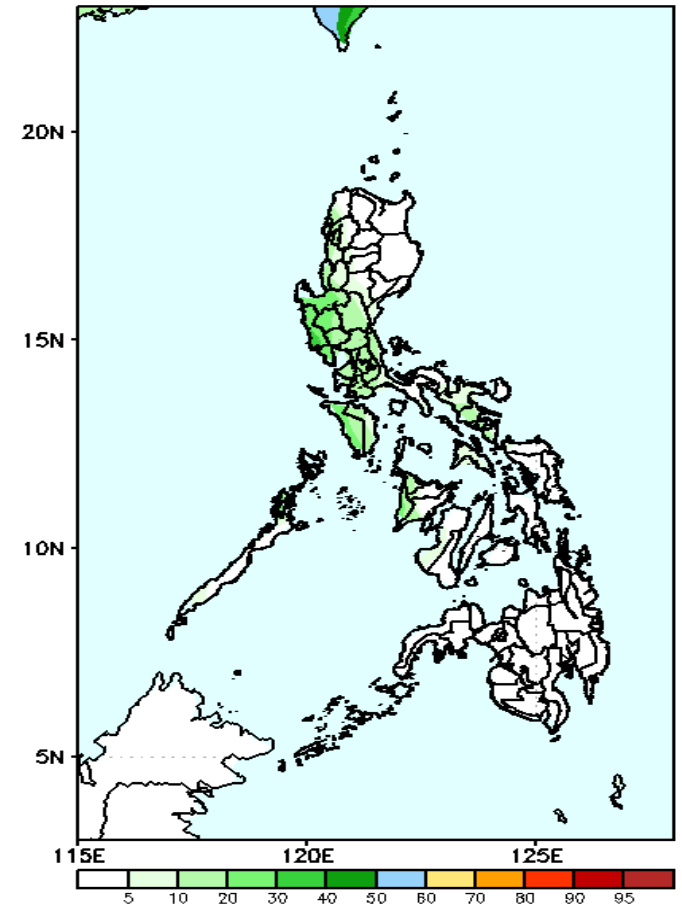
Low probability of rainfall to exceed 100mm in most parts of the country during the forecast period.

GEFS Week-2 Exceedance Prob. > 150mm
Valid: 20220704 – 20220710



Low probability of rainfall to exceed 150mm in most parts of the country during the forecast period.

GEFS Week-2 Exceedance Prob. > 200mm
Valid: 20220704 – 20220710



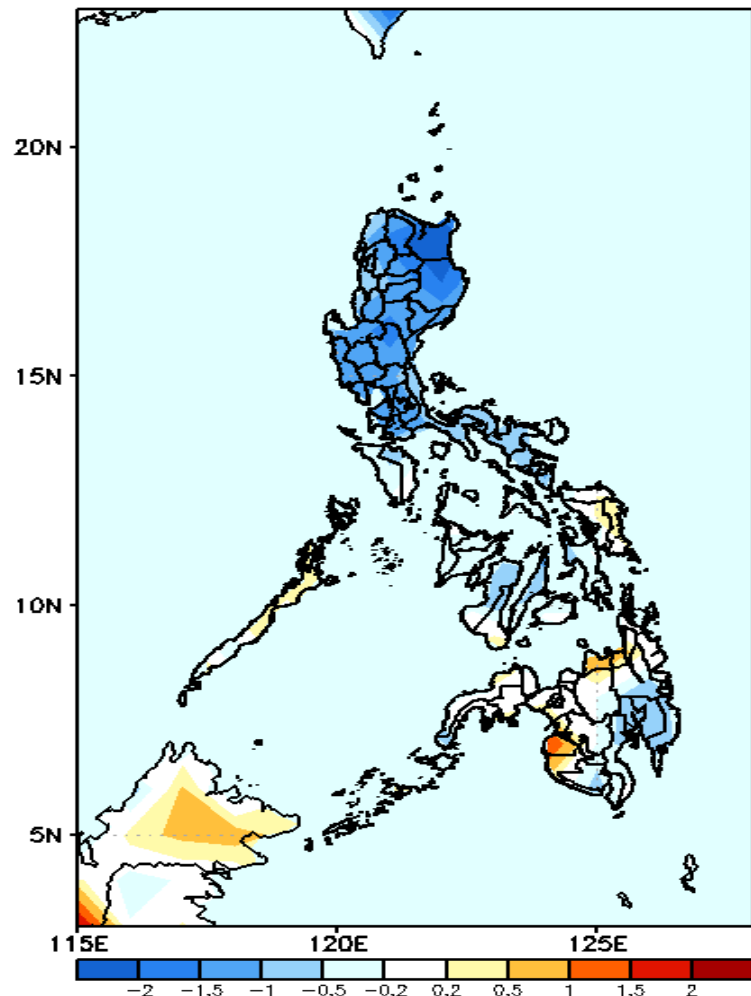
Low probability of rainfall to exceed 200mm in most parts of the country during the forecast period.

19
SA



GEFS Week-1 & 2 Forecasts: T2m Anomaly

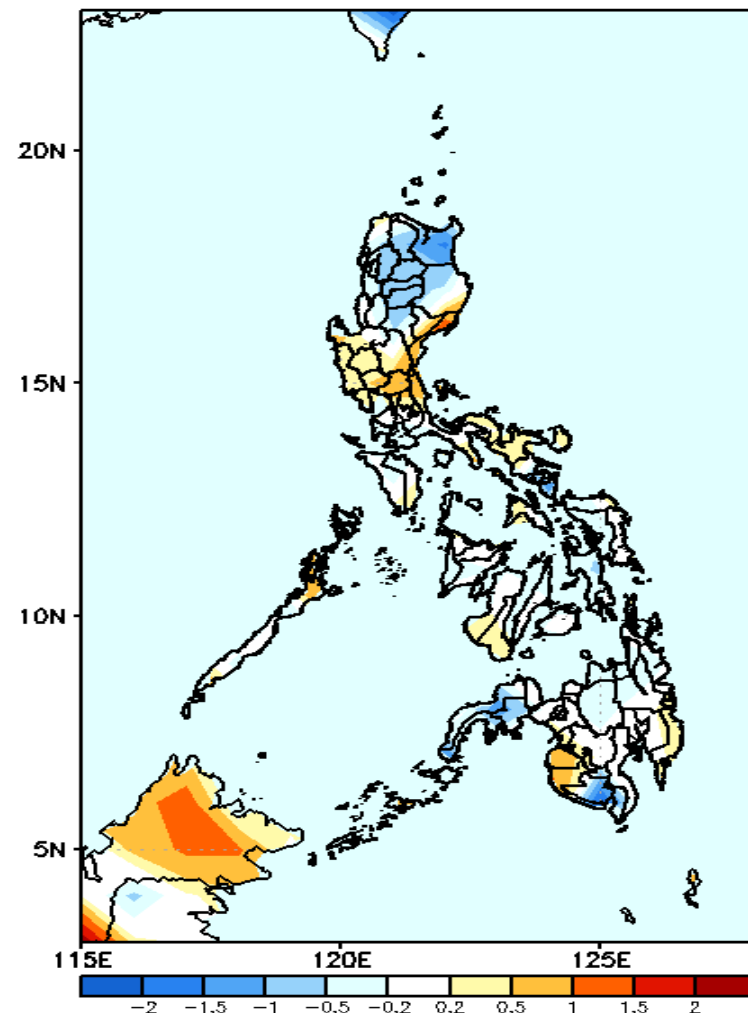
GEFS Week-1 T2m Anomaly
Valid: 20220627 - 20220703



2m Temperature Week 1: Jun 27- Jul 03, 2022

Cooler surface air temperature will likely experience in most parts of Luzon while average to slightly cooler in Visayas and Mindanao (except with some slightly warmer temperature in Misamis Oriental, Maguindanao and Sultan Kudarat) during the forecast period.

GEFS Week-2 T2m Anomaly
Valid: 20220704 - 20220710



2m Temperature Week 2: Jul 04-10, 2022

Slightly cooler than surface air temperature will likely experience in most parts of Northern Luzon, Zamboanga Peninsula and South Cotabato while average to warmer temperature for the rest of the country during the forecast period.