



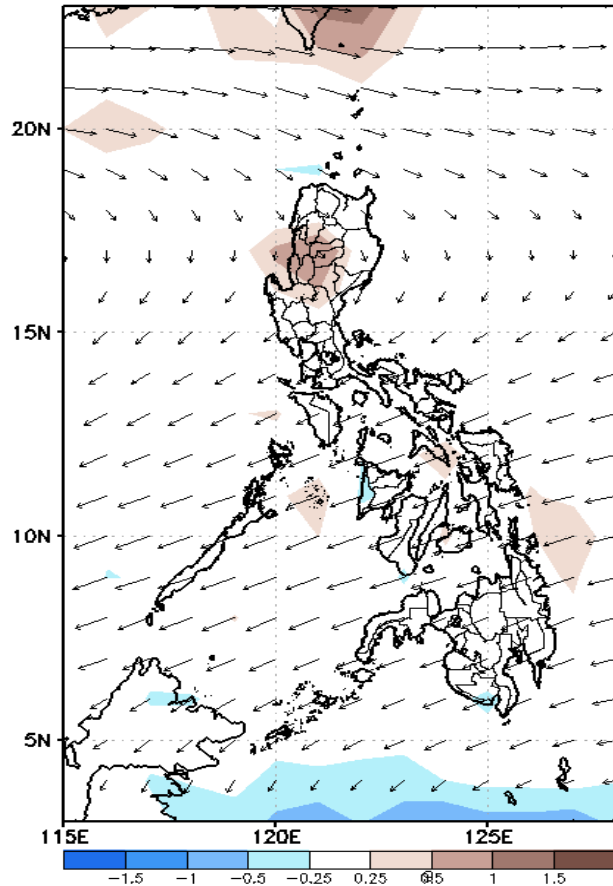
Week 1 & Week 2 Forecast for the Philippines using GEFS Model



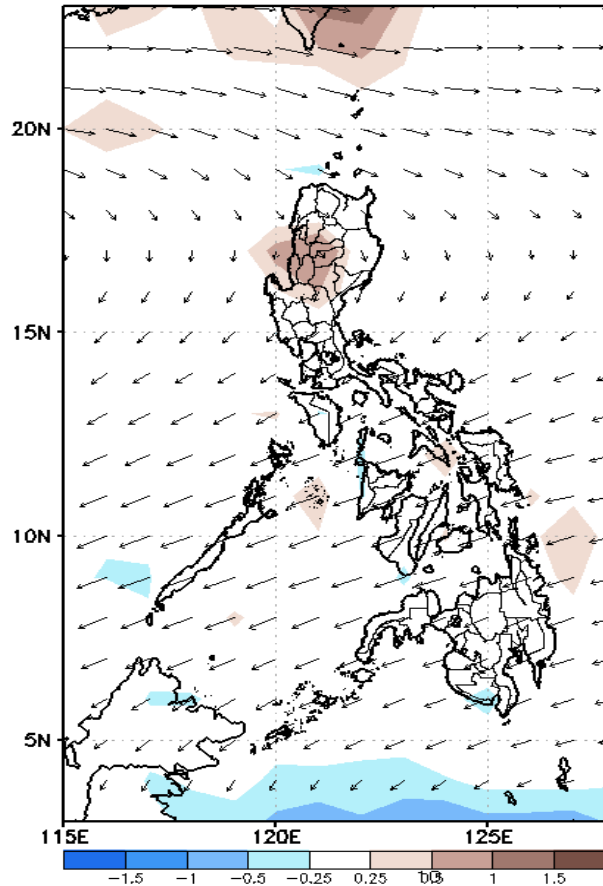
GEFS Week-1 Forecasts: Wind Anomaly Forecast

Week 1: Mar 27-Apr 02, 2023

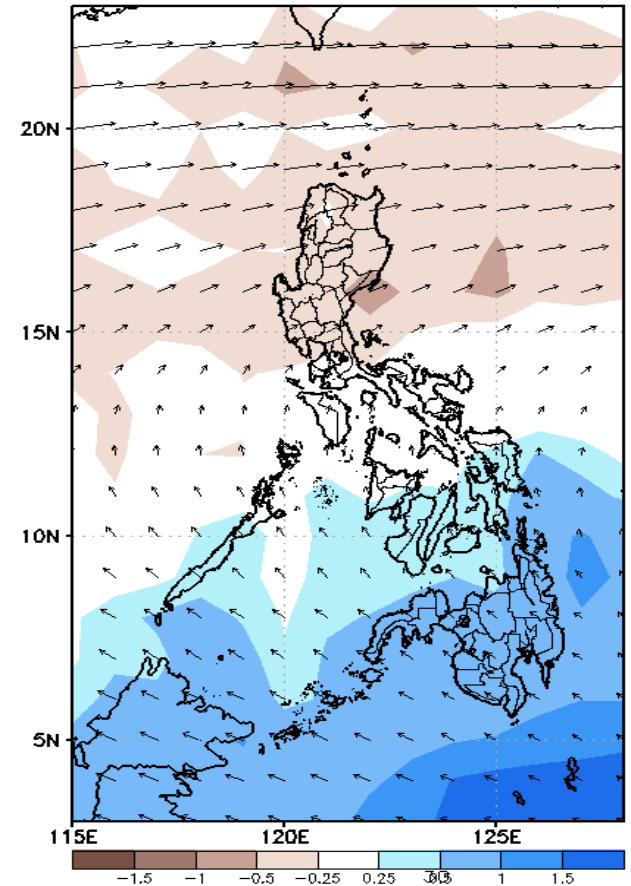
GEFS Week-1 850-hPa Divergence and Wind Anom
Valid: 20230327 - 20230402



GEFS Week-1 700-hPa Divergence and Wind Anom
Valid: 20230327 - 20230402



GEFS Week-1 200-hPa Divergence and Wind Anom
Valid: 20230327 - 20230402

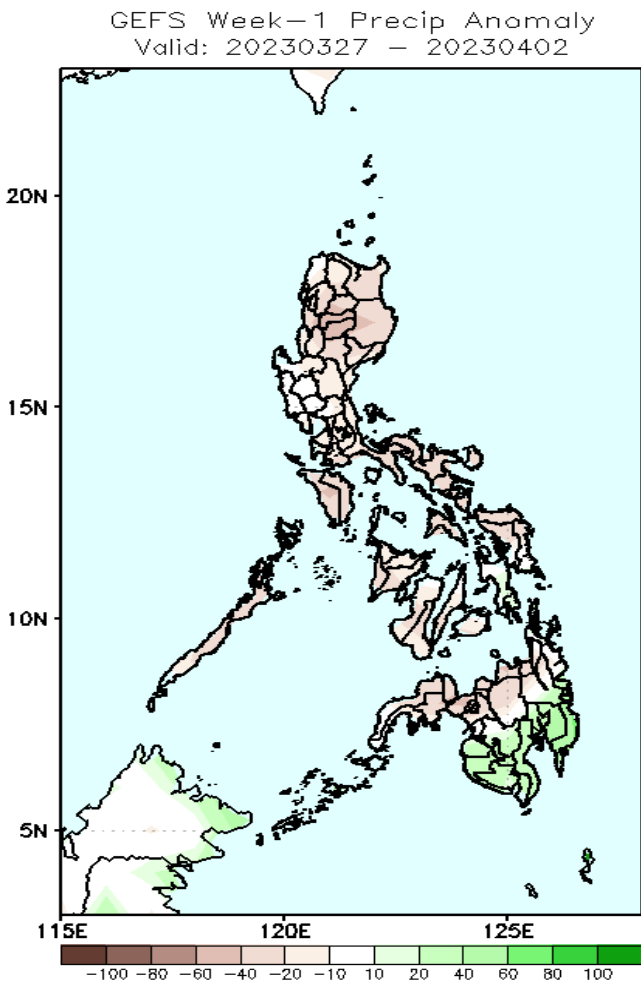


Easterlies is forecasted to affect most parts of the country; expect dry and hot weather during the forecast period.

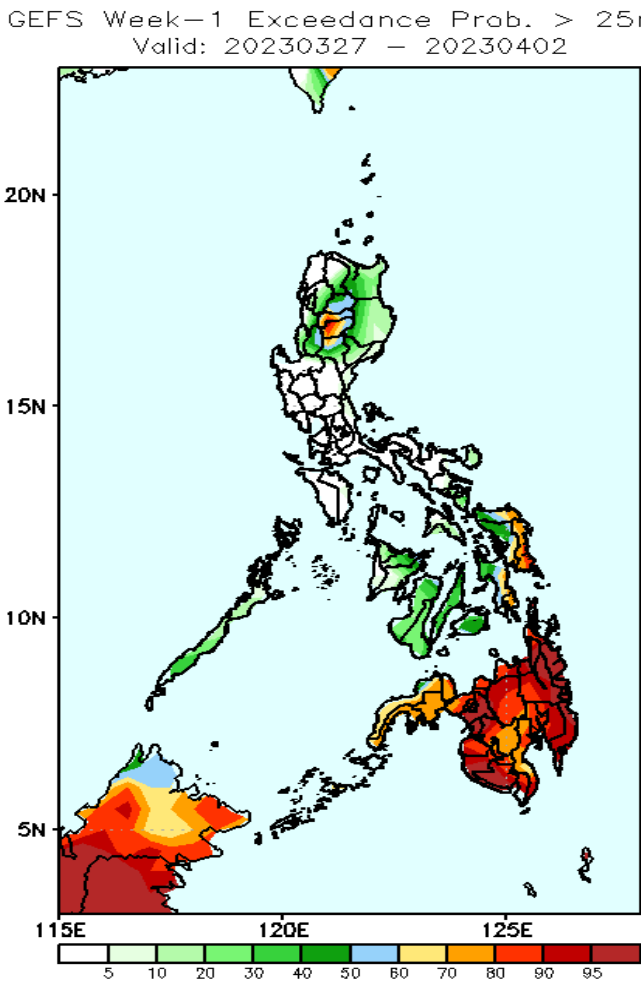
Precipitation Anomaly and Exceedance Probability > 25/50 mm

- Very high probability
- High Probability
- Moderate Probability
- Low Probability

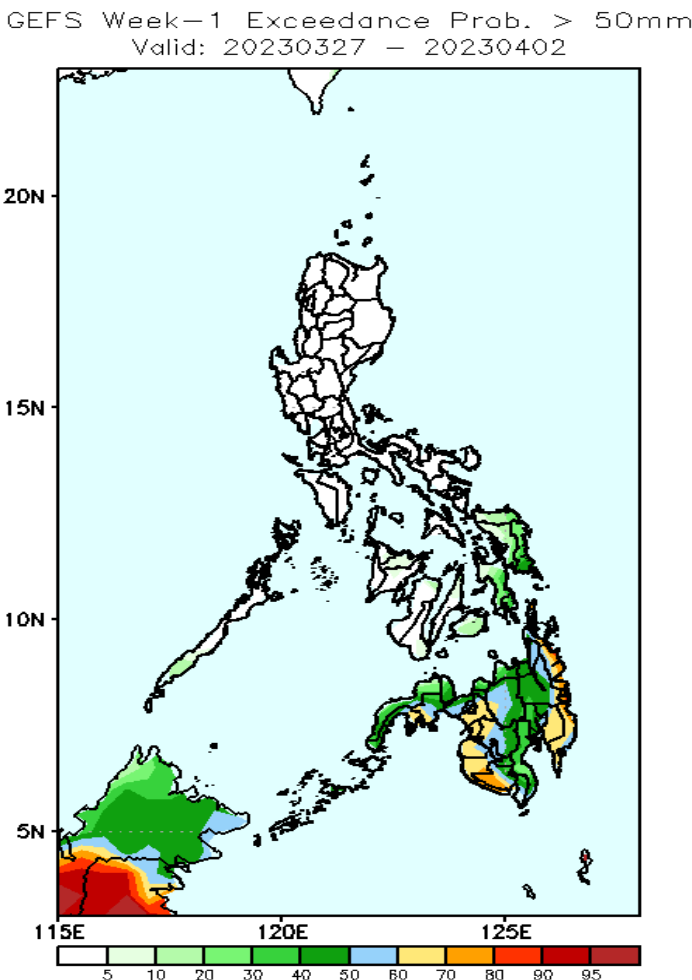
Week 1: Mar 27-Apr 02, 2023



Rainfall deficit of 20-80mm is expected in most parts Luzon, Visayas and northern Mindanao while southern Mindanao will likely have 40-80mm increase of rainfall during the forecast period.



High to very high probability of rainfall to exceed 25mm in most parts of Mindanao, Mountain Province, Ifugao and some portion of Eastern Visayas while low chance over the rest of the country.



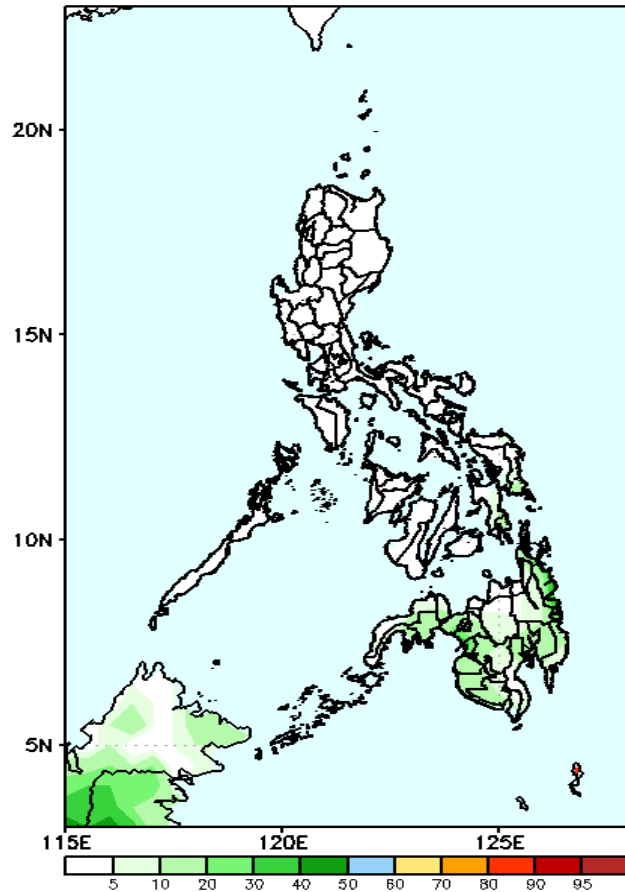
Moderate to high probability of rainfall to exceed 50mm in the eastern and western part of Mindanao including some parts of Zamboanga peninsula while low chance over the rest of the country.



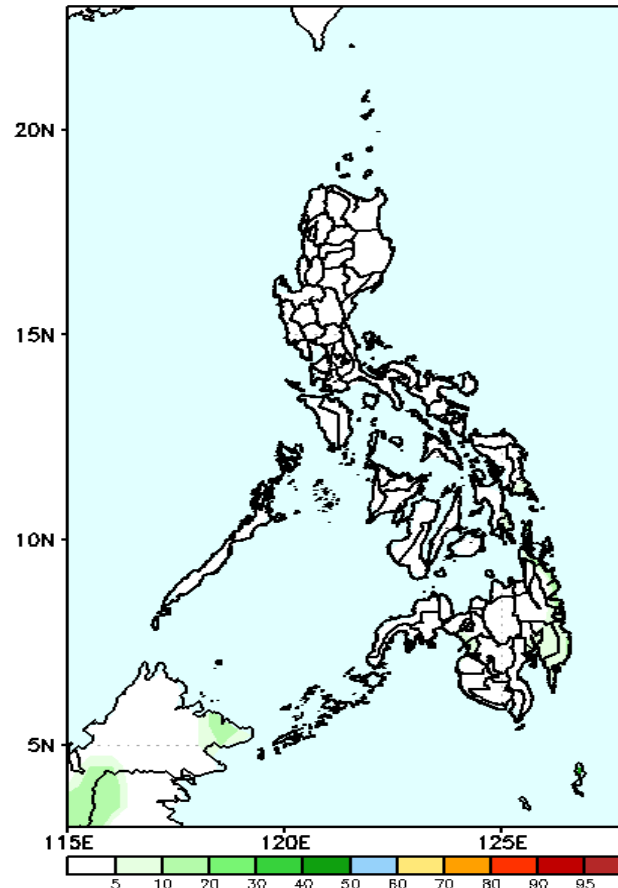
Exceedance Probability > 100/150/200 mm

Week 1: Mar 27-Apr 02, 2023

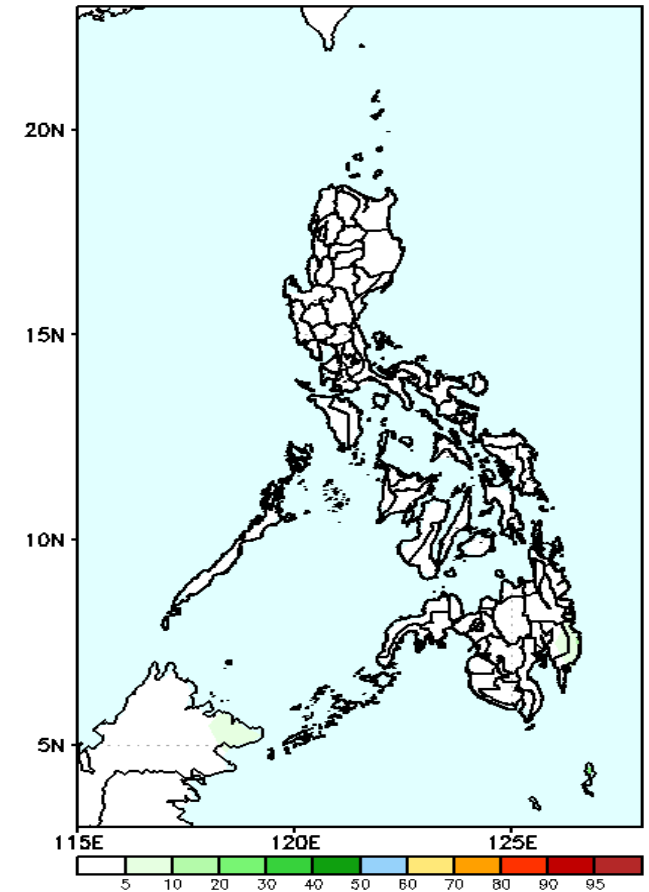
GEFS Week-1 Exceedance Prob. > 100mm
Valid: 20230327 - 20230402



GEFS Week-1 Exceedance Prob. > 150mm
Valid: 20230327 - 20230402



GEFS Week-1 Exceedance Prob. > 200mm
Valid: 20230327 - 20230402



Low probability of rainfall to exceed 100mm in most parts of the country during the forecast period.

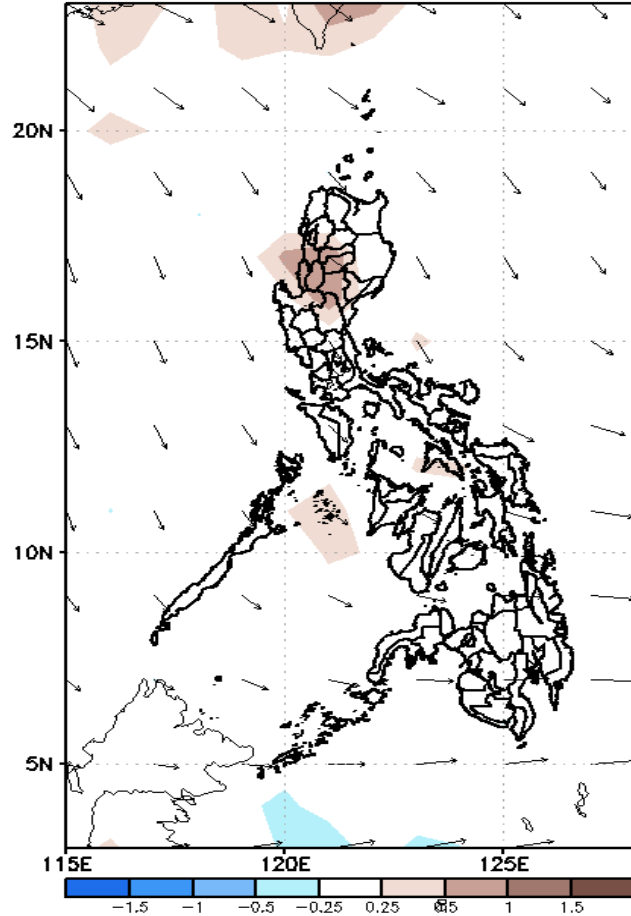
Low probability of rainfall to exceed 150mm in most parts of the country during the forecast period.

Low probability of rainfall to exceed 200mm in most parts of the country during the forecast period.

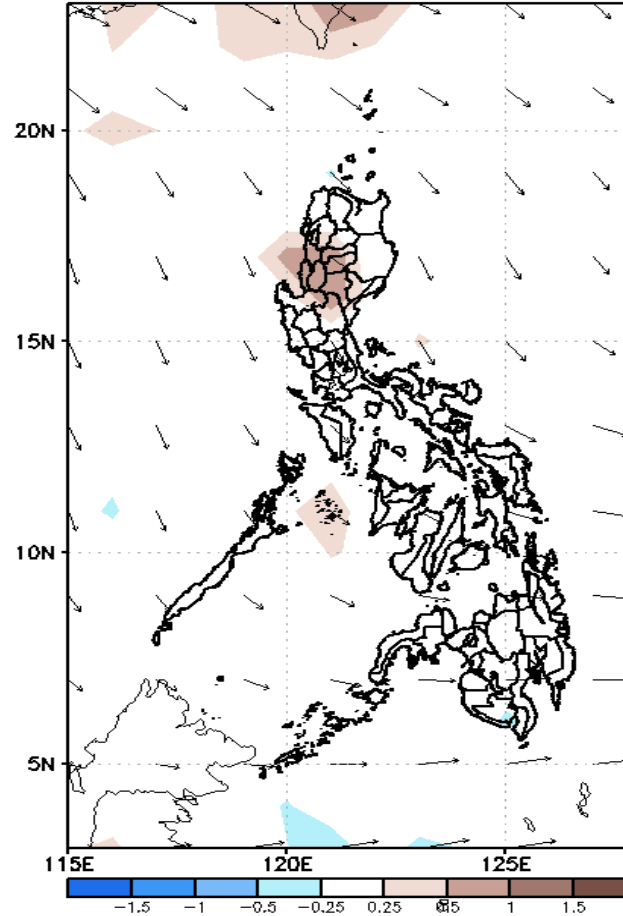
GEFS Week-2 Forecasts: Wind Anomaly Forecast

Week 2: Mar 31-Apr 06, 2023

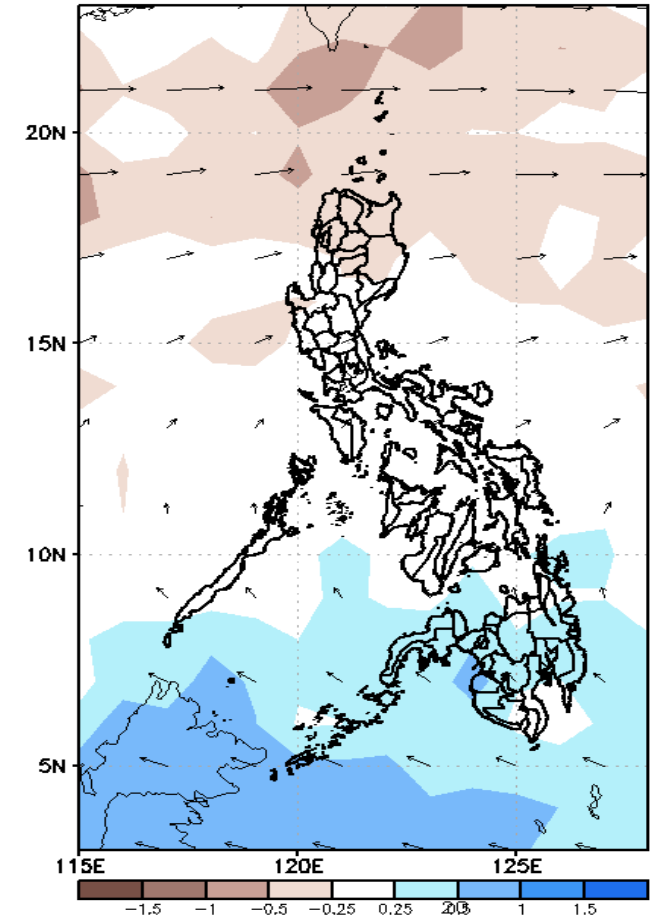
GEFS Week-2 850-hPa Divergence and Wind Anom
Valid: 20230403 - 20230409



GEFS Week-2 700-hPa Divergence and Wind Anom
Valid: 20230403 - 20230409

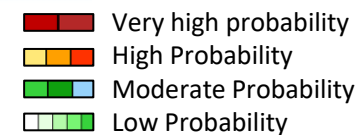


GEFS week-2 200-hPa Divergence and Wind Anom
Valid: 20230403 - 20230409



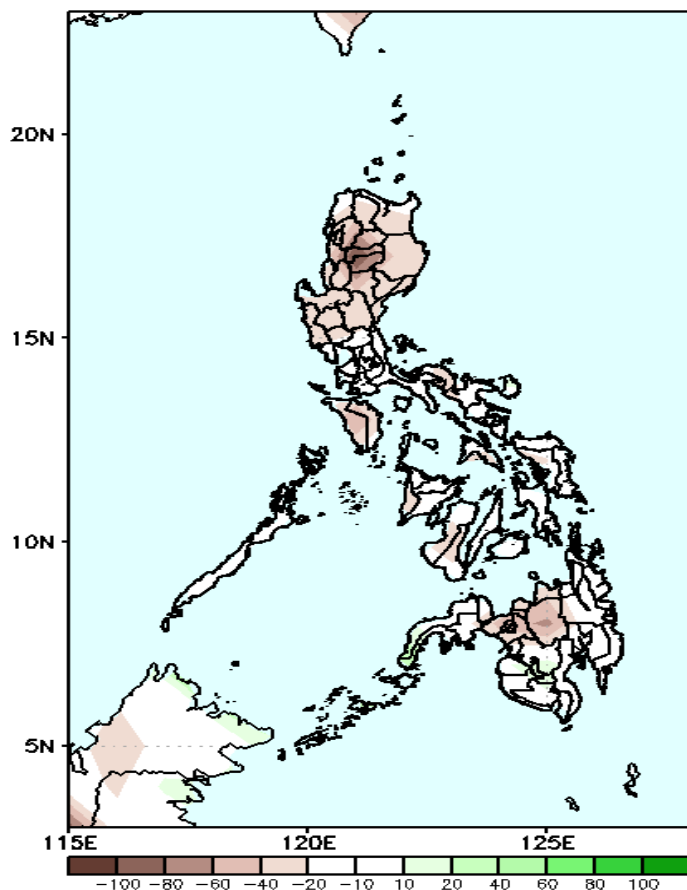
Easterlies is forecasted to affect most parts of the country; expect dry and hot weather during the forecast period.

Precipitation Anomaly and Exceedance Probability > 25/50 mm



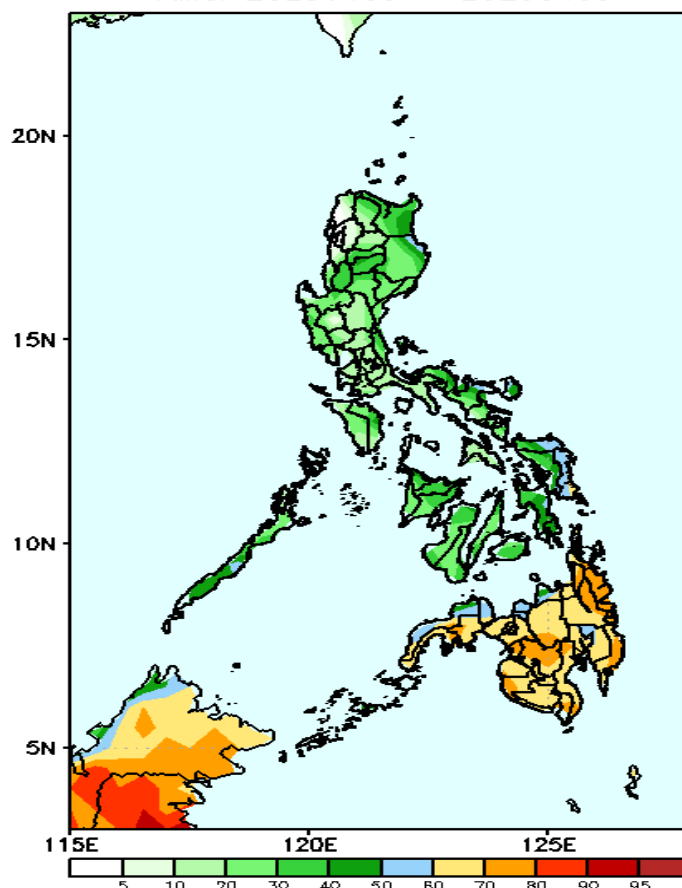
Week 2: Mar 31-Apr 06, 2023

GEFS Week-2 Precip Anomaly
Valid: 20230403 - 20230409



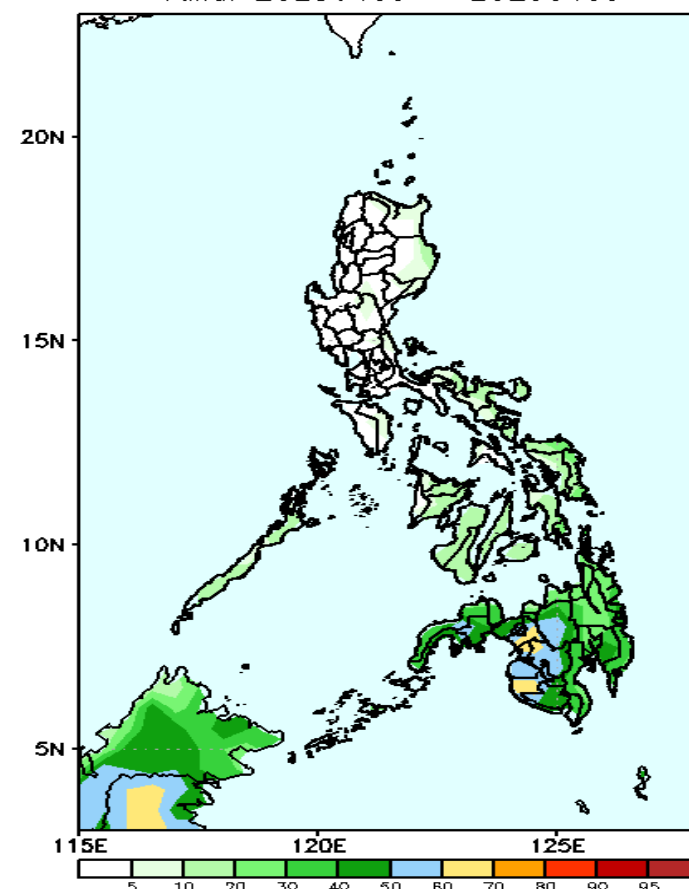
Rainfall deficit of 20-80mm is expected in most parts of the country during the forecast period.

GEFS Week-2 Exceedance Prob. > 25mm
Valid: 20230403 - 20230409



Moderate to high probability of rainfall to exceed 25mm in most parts of Mindanao and Eastern Samar while low chance over the rest of the country.

GEFS Week-2 Exceedance Prob. > 50mm
Valid: 20230403 - 20230409

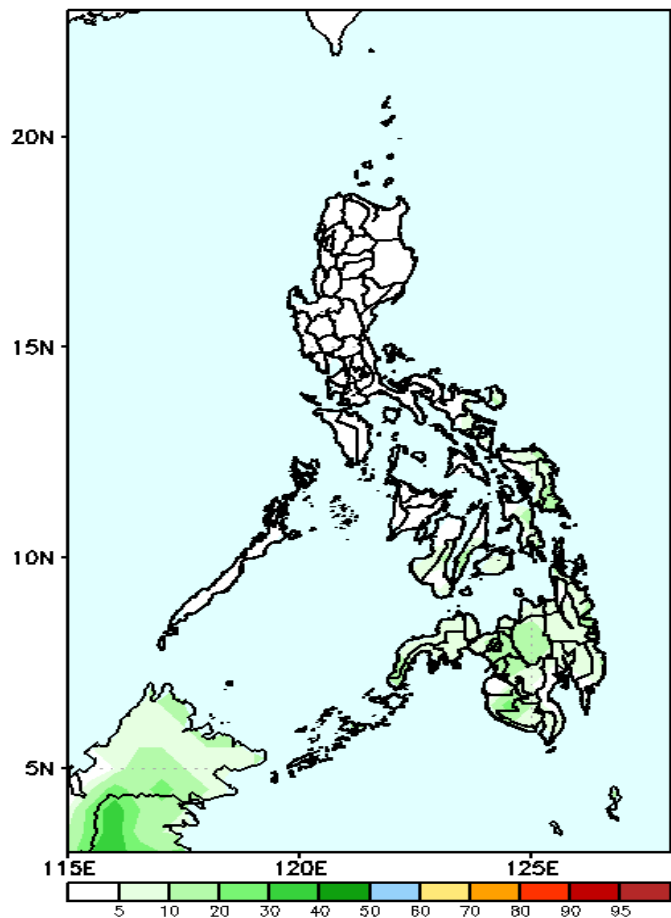


Moderate to high probability of rainfall to exceed 50mm in some portions of Western and Central part of Mindanao while low chance over the rest of the country.

Exceedance Probability > 100/150/200 mm

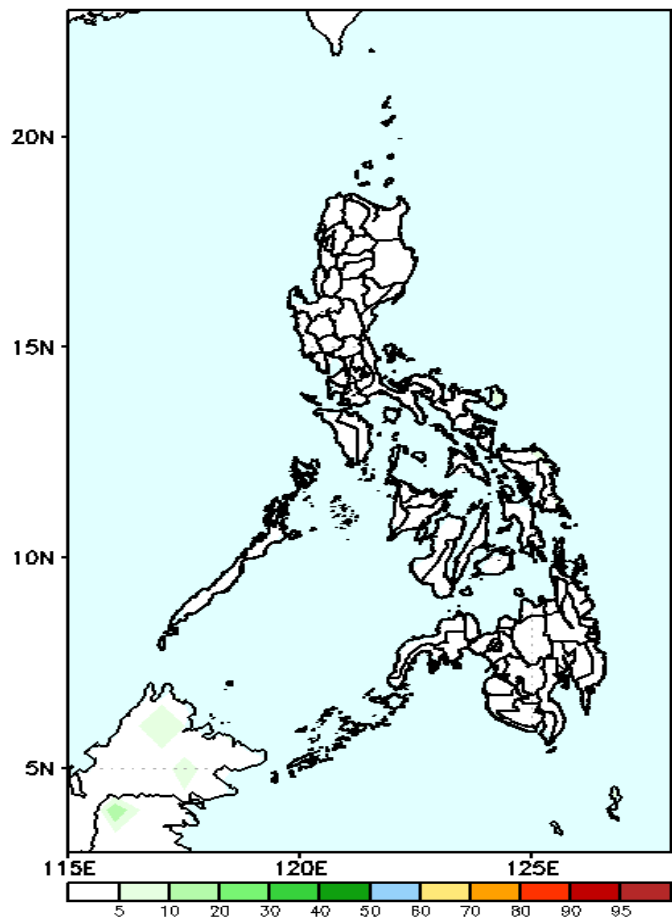
Week 2: Mar 31-Apr 06, 2023

GEFS Week-2 Exceedance Prob. > 100mm
Valid: 20230403 – 20230409



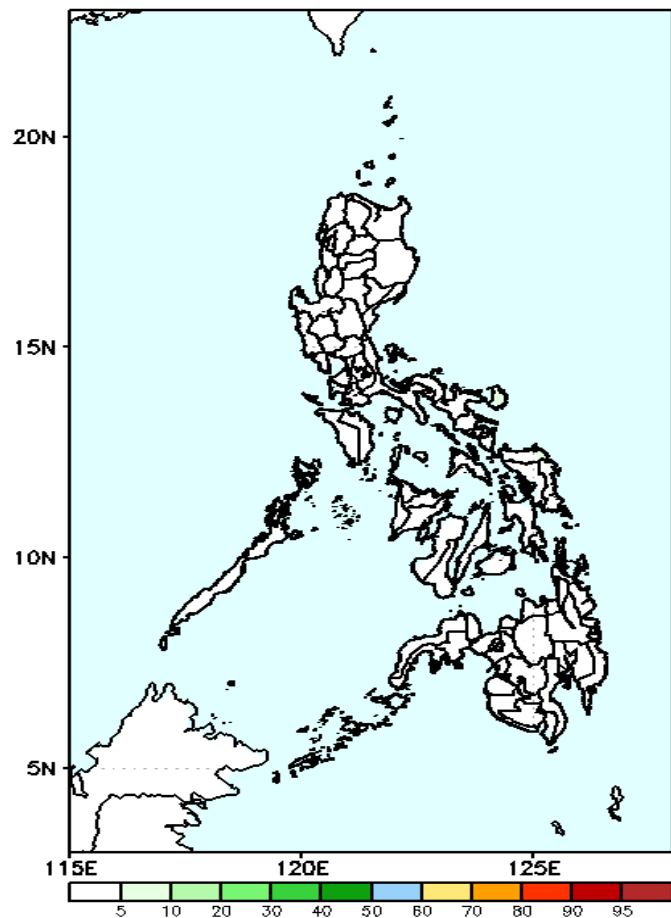
Low probability of rainfall to exceed 100mm in most parts of the country during the forecast period.

GEFS Week-2 Exceedance Prob. > 150mm
Valid: 20230403 – 20230409



Low probability of rainfall to exceed 150mm in most parts of the country during the forecast period.

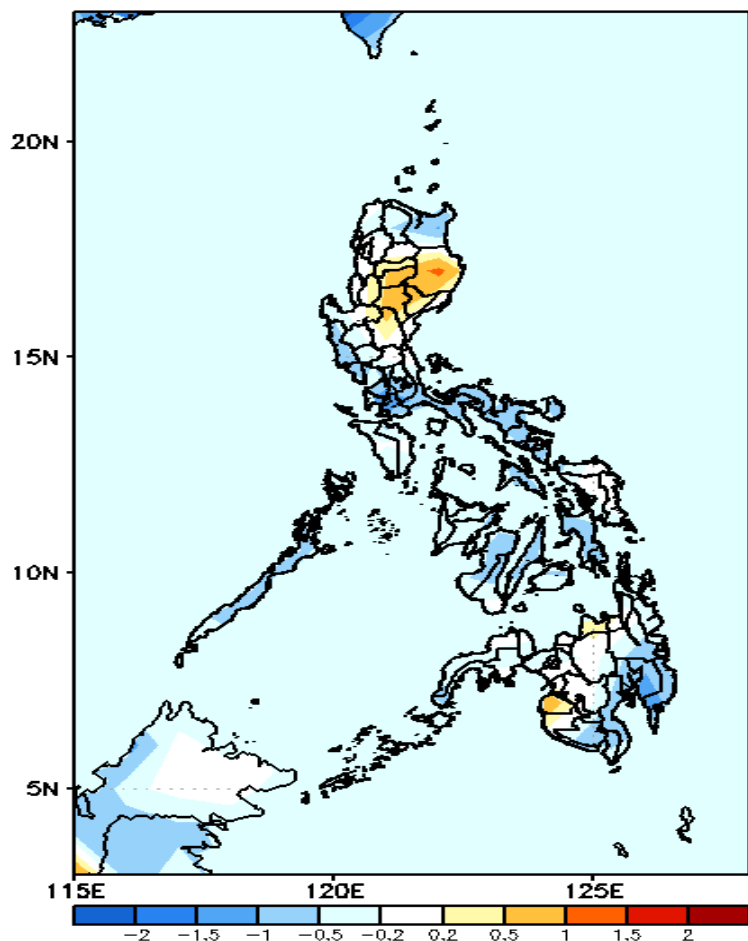
GEFS Week-2 Exceedance Prob. > 200mm
Valid: 20230403 – 20230409



Low probability of rainfall to exceed 200mm in most parts of the country during the forecast period.

GEFS Week-1 & 2 Forecasts: T2m Anomaly

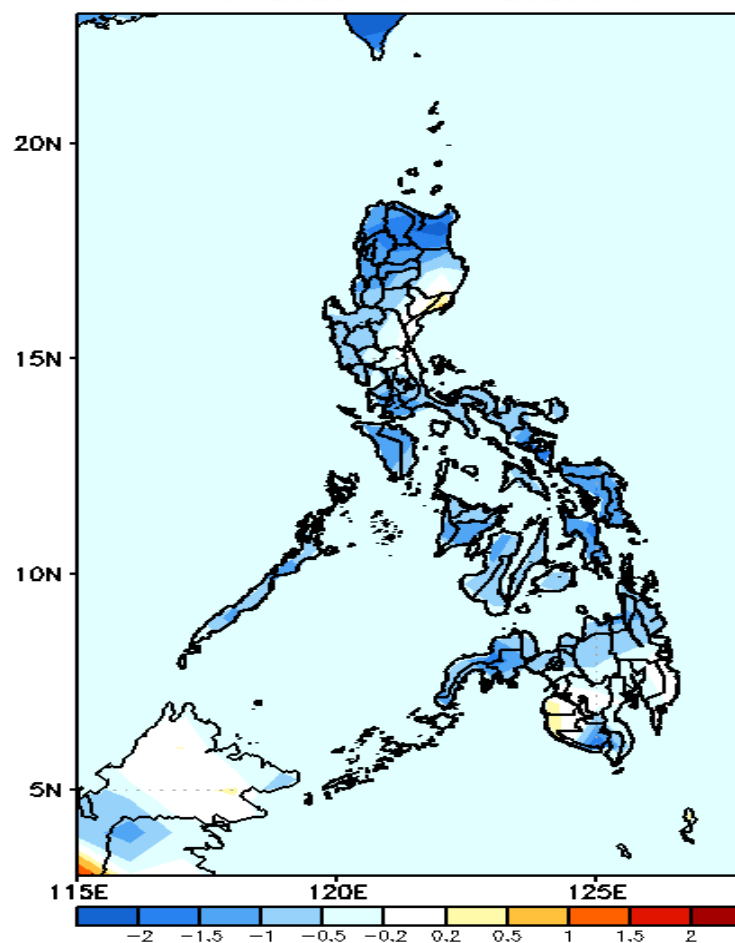
GEFS Week-1 T2m Anomaly
Valid: 20230327 - 20230402



2m Temperature Week 1: Mar 27-Apr 02, 2023

Slightly warmer than average surface air temperature will likely experience in most parts of CAR, Isabela and Maguindanao while the rest of the country will likely have average to slightly cooler temperature during the forecast period.

GEFS Week-2 T2m Anomaly
Valid: 20230403 - 20230409



2m Temperature Week 2: Apr 03-09, 2023

Average to cooler than average surface air temperature will likely experience in most parts of the country during the forecast period.