



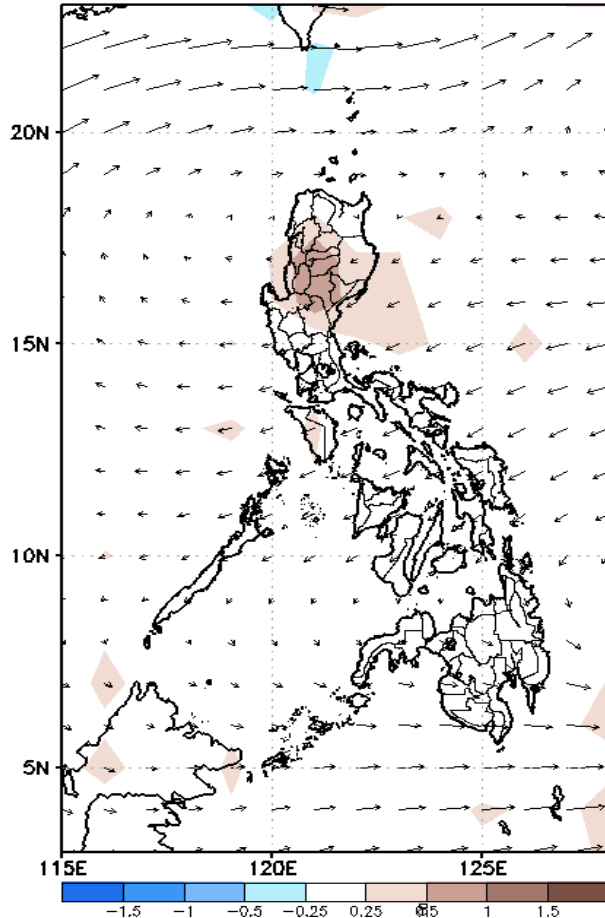
# Week 1 & Week 2 Forecast for the Philippines using GEFS Model



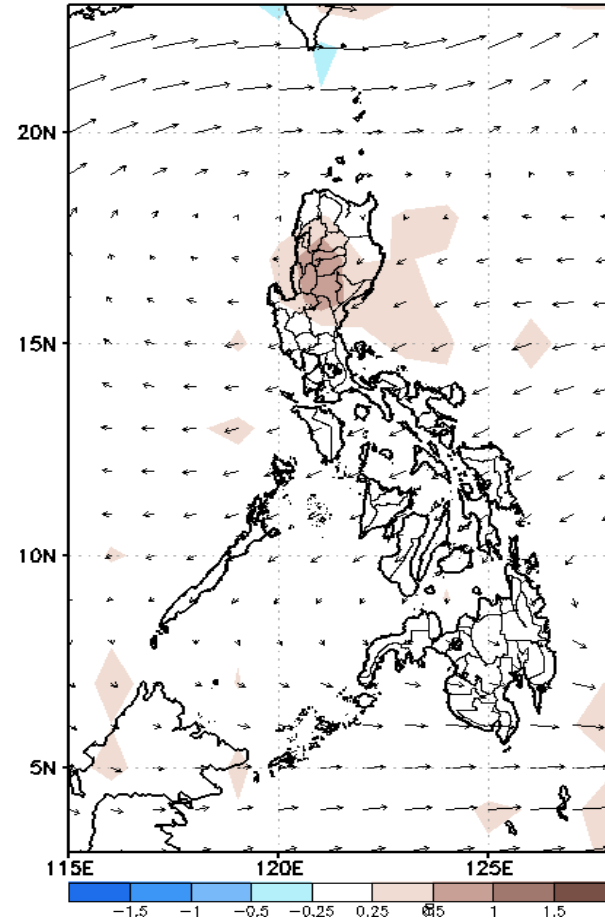
# GEFS Week-1 Forecasts: Divergence & Wind Anomaly

**Week 1: May 27 – June 02, 2021**

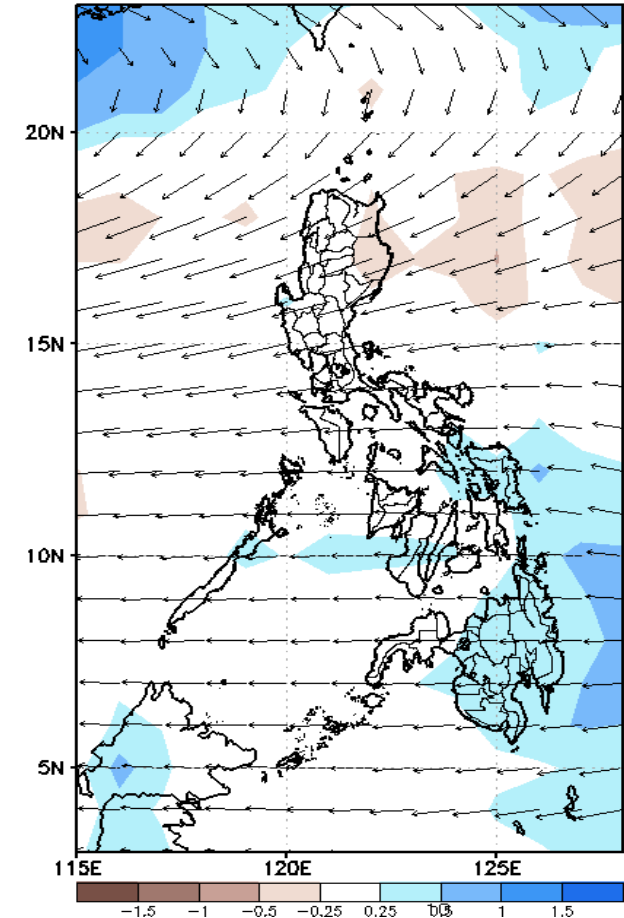
GEFS Week-1 850-hPa Divergence and Wind Anom  
Valid: 20210527 – 20210602



GEFS Week-1 700-hPa Divergence and Wind Anom  
Valid: 20210527 – 20210602



GEFS Week-1 200-hPa Divergence and Wind Anom  
Valid: 20210527 – 20210602



Upper and low level Divergence suggest likelihood of precipitation in most parts of Visayas and Mindanao. Easterlies affecting most parts of the country. Attributing to warmer temperature and higher heat index during the forecast period.

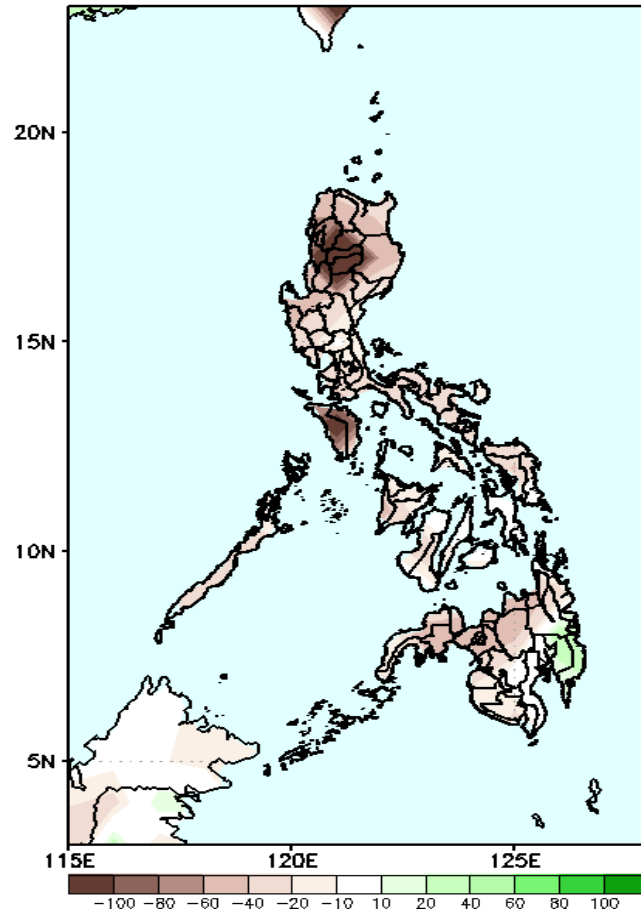
Mayong  
AGASA



# Precipitation Anomaly and Exceedance Probability > 25/50 mm

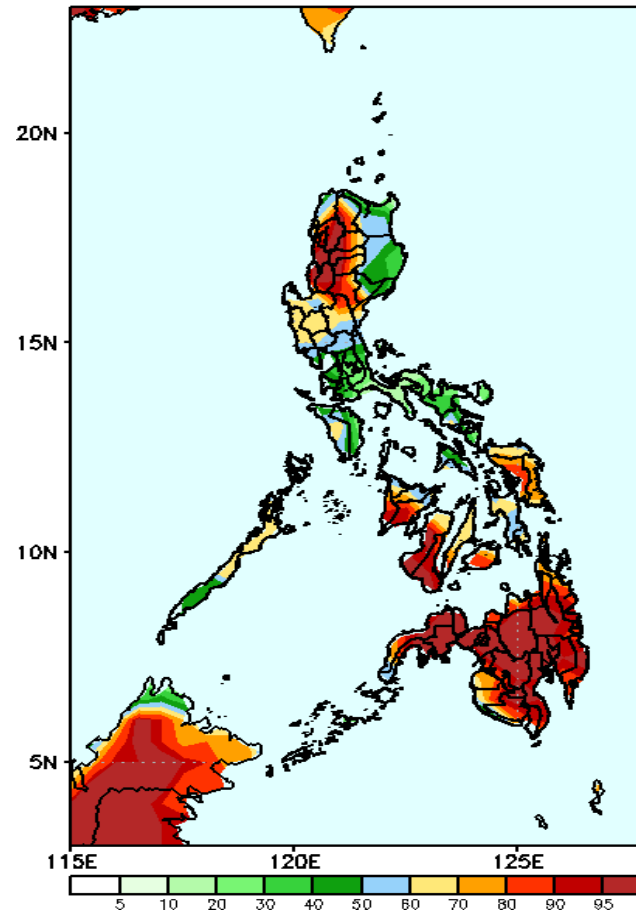
**Week 1: May 27 – June 02, 2021**

GEFS Week-1 Precip Anomaly  
Valid: 20210527 – 20210602



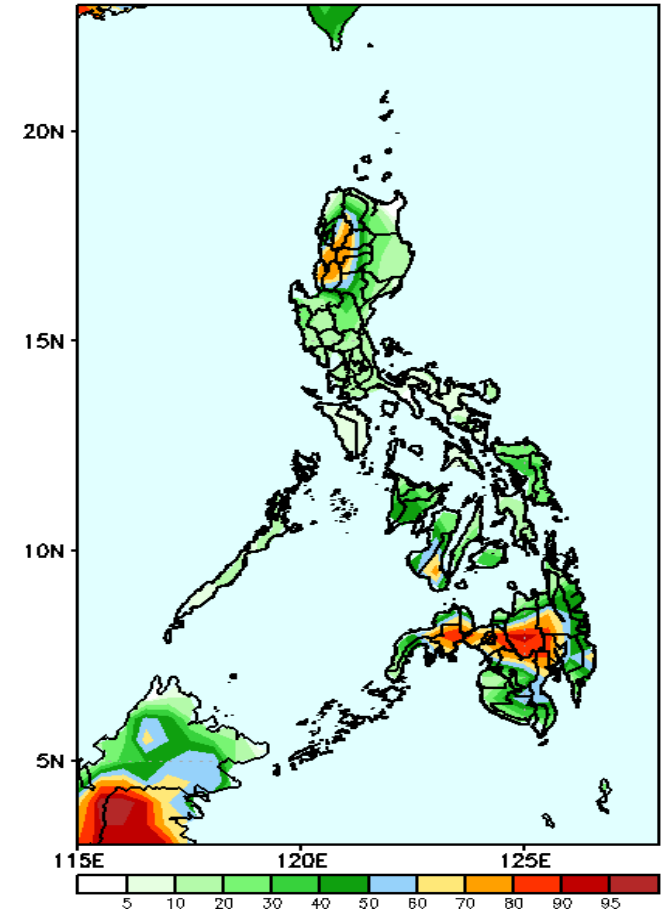
Rainfall deficit of 60-150mm is expected in most parts of the country (specially in Cordillera Region & Mindoro) except in the Davao Region and North Cotabato where 40-60mm increase of rainfall is more likely.

GEFS Week-1 Exceedance Prob. > 25mm  
Valid: 20210527 – 20210602



High probability of rainfall to exceed 25mm in Ilocos Region, CAR and most parts of Visayas and Mindanao while less likely for the remaining parts of the country during the forecast period.

GEFS Week-1 Exceedance Prob. > 50mm  
Valid: 20210527 – 20210602

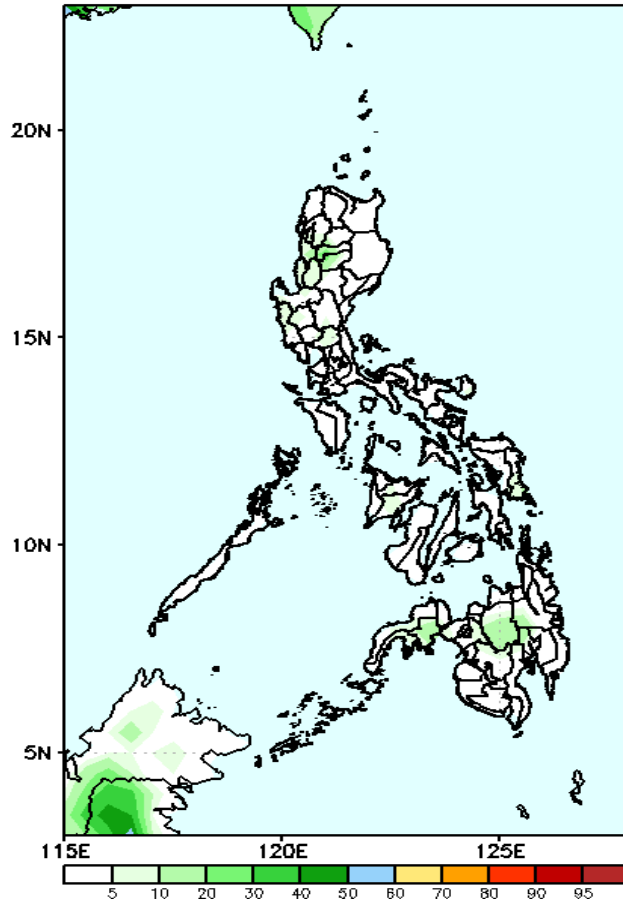


High probability of rainfall to exceed 50mm in most parts of Cordillera Region, La Union, Zamboanga del Sur, Northern Mindanao and Lanao del Sur while less likely for the rest of the country during the forecast period.

# Exceedance Probability > 100/150/200 mm

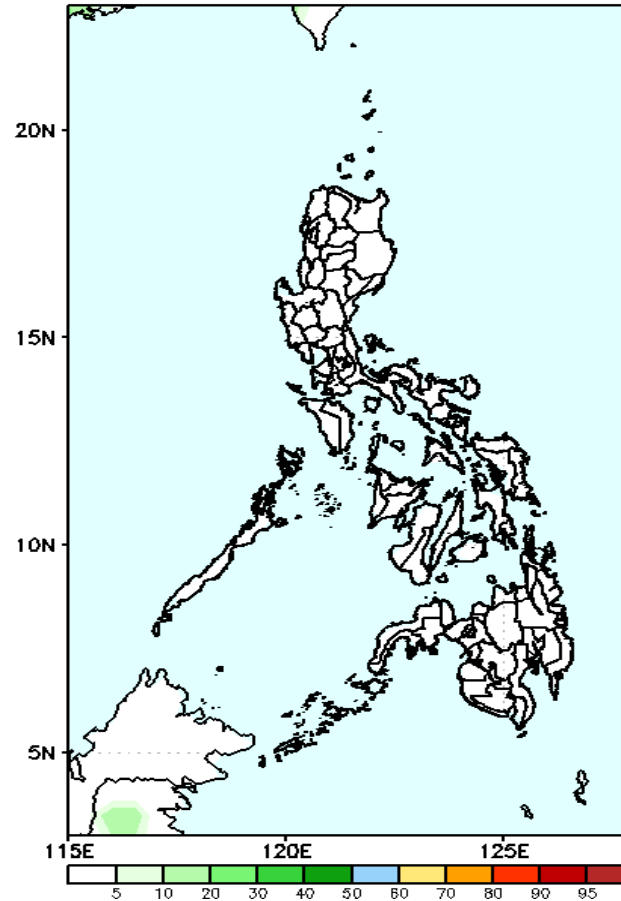
Week 1: May 27 – June 02, 2021

GEFS Week-1 Exceedance Prob. > 100mm  
Valid: 20210527 – 20210602



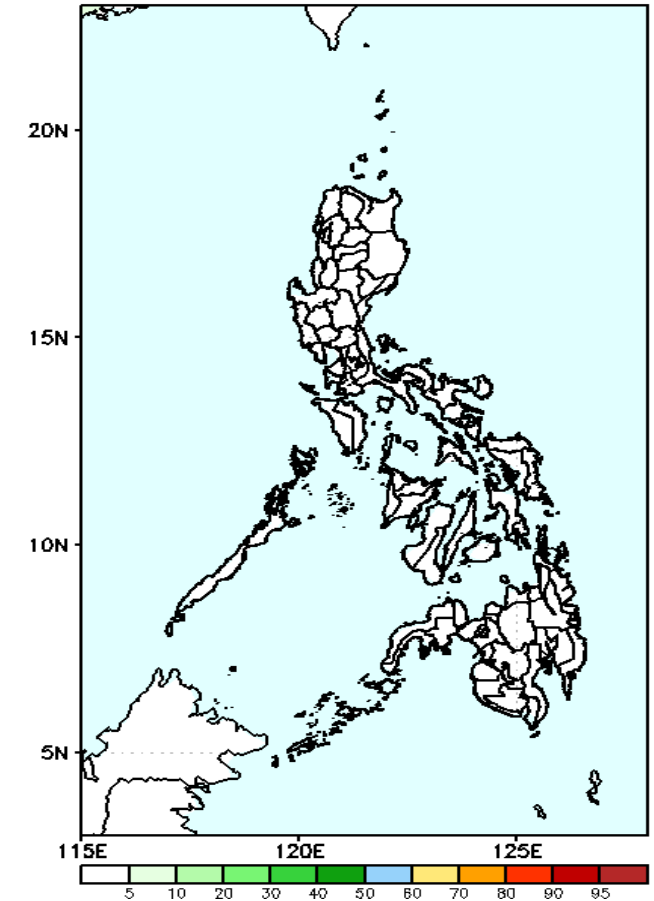
Less probability of rainfall to exceed 100mm in most parts of the country during the forecast period.

GEFS Week-1 Exceedance Prob. > 150mm  
Valid: 20210527 – 20210602



Less probability of rainfall to exceed 150mm in most parts of the country during the forecast period.

GEFS Week-1 Exceedance Prob. > 200mm  
Valid: 20210527 – 20210602



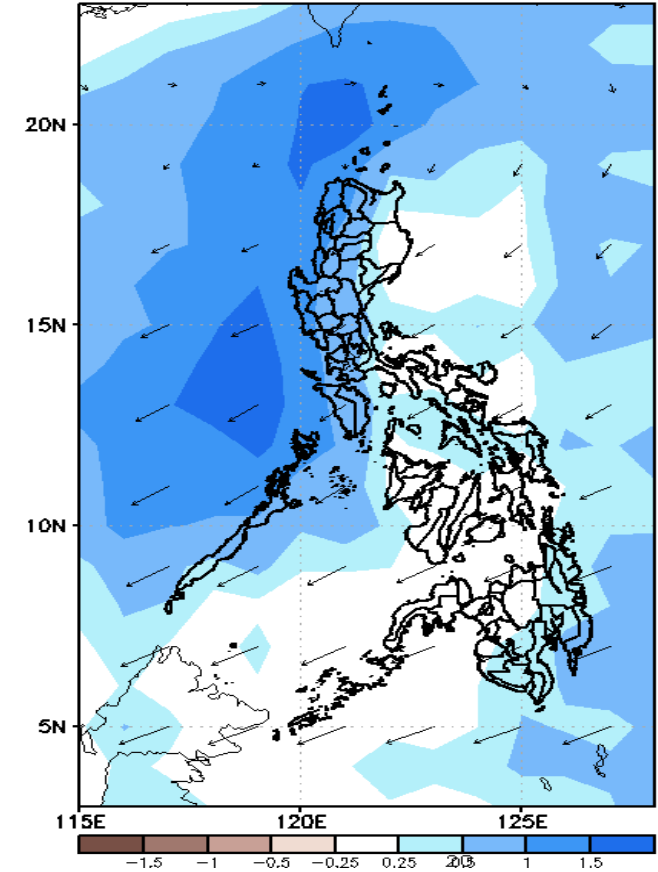
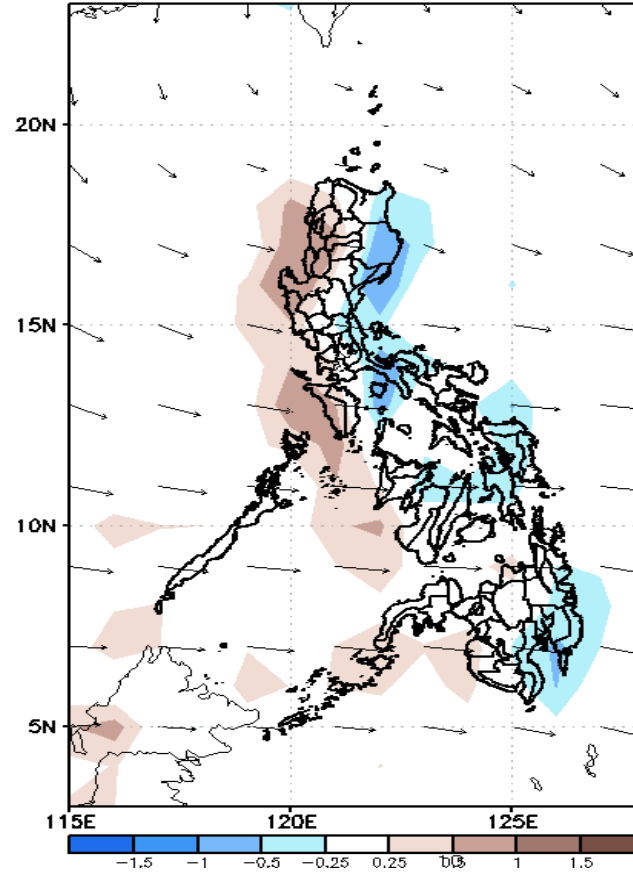
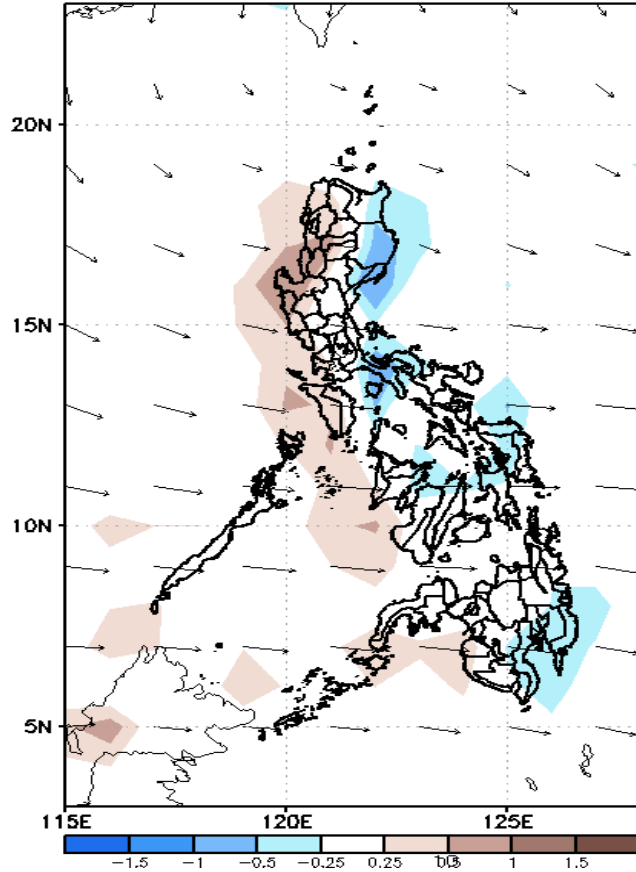
Less probability of rainfall to exceed 200mm in most parts of the country during the forecast period.



# GEFS Week-2 Forecasts: Divergence & Wind Anomaly

Week 2: June 03-09, 2021

GEFS Week-2 850-hPa Divergence and Wind Anom  
Valid: 20210603 - 20210609

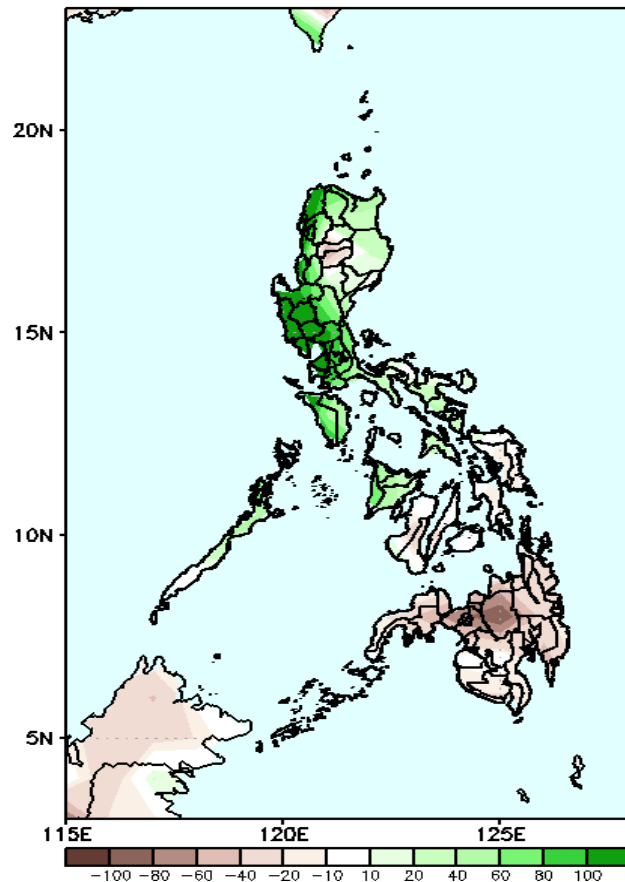


Upper and low level Divergence suggest likelihood of precipitation in most parts of the country. Southwesterly windflow affecting most parts of the country. Attributing to warmer temperature and humid environment during the forecast period.

# Precipitation Anomaly and Exceedance Probability > 25/50 mm

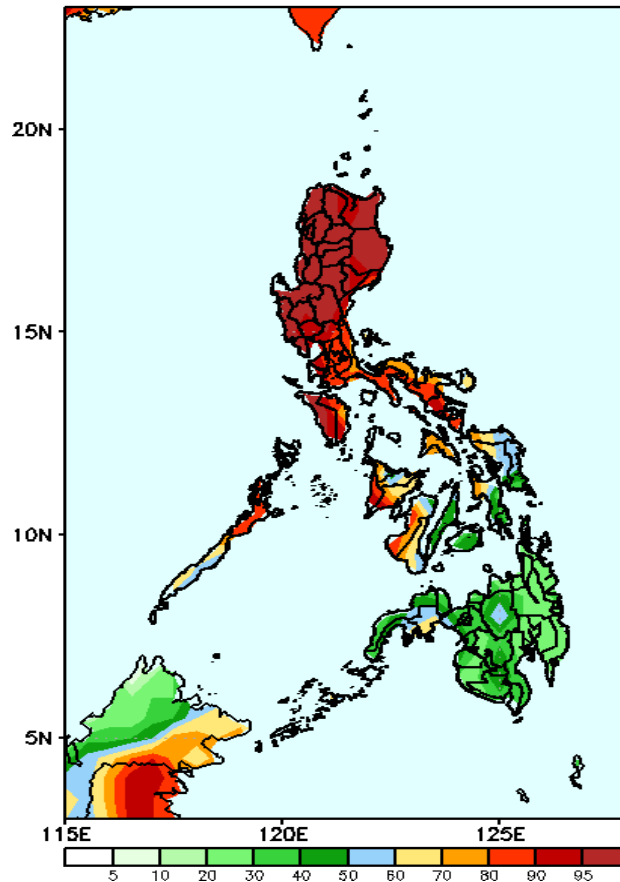
## Week 2: June 03-09, 2021

GEFS Week-2 Precip. Anomaly  
Valid: 20210603 – 20210609



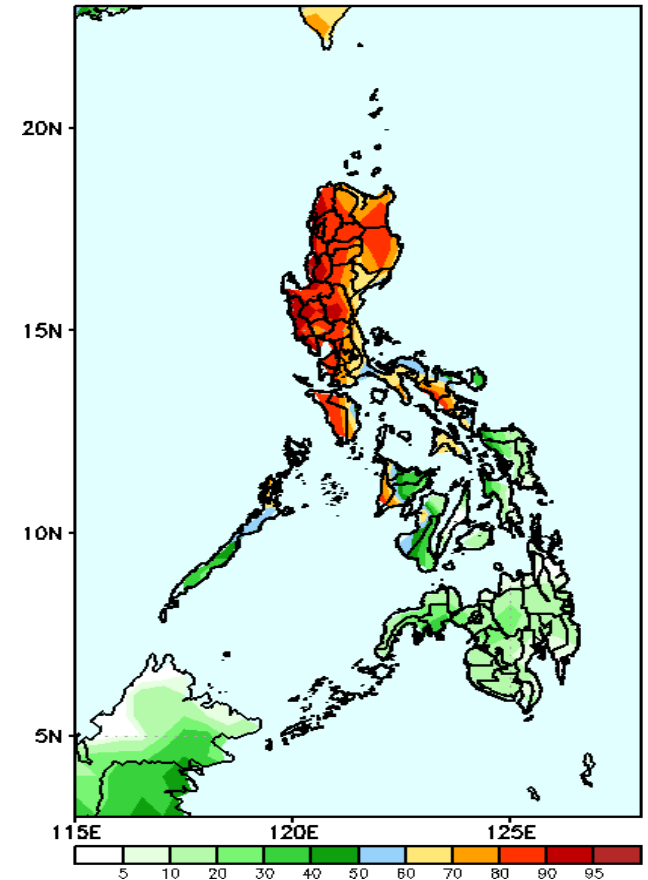
Rainfall deficit of 40-100mm is expected in Mt. Province and Ifugao, most parts of Visayas and Mindanao while increase of rainfall of 60-150mm in most parts of Luzon. (up to 150mm in the western sections)

GEFS Week-2 Exceedance Prob. > 25mm  
Valid: 20210603 – 20210609



High probability of rainfall to exceed 25mm in most parts of Luzon, western & central Visayas and northern Samar while less likely for the rest of the country during the forecast period.

GEFS Week-2 Exceedance Prob. > 50mm  
Valid: 20210603 – 20210609



High probability of rainfall to exceed 50mm in most parts of Luzon, Antique and Iloilo while less likely for the rest of the country during the forecast period.

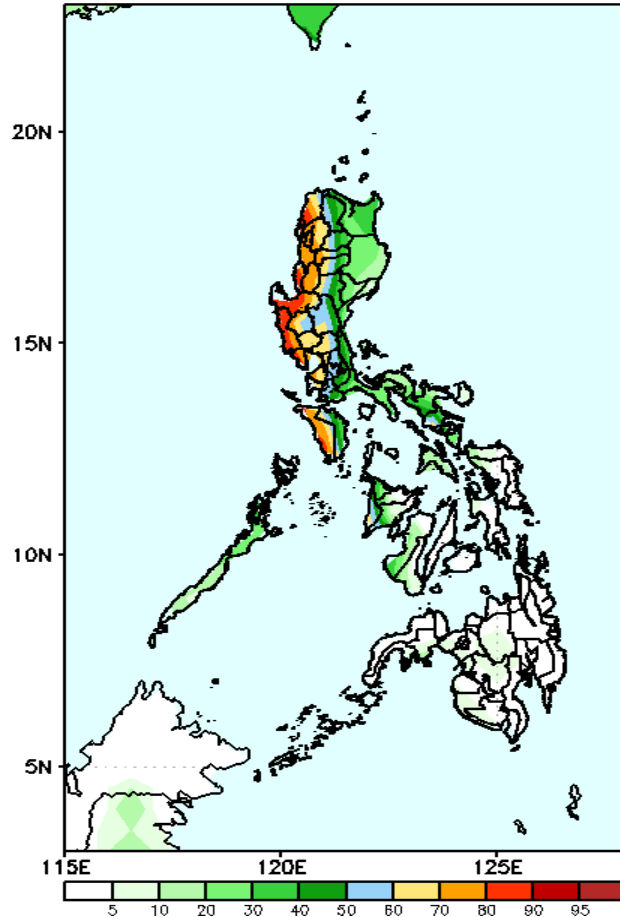




# Exceedance Probability > 100/150/200 mm

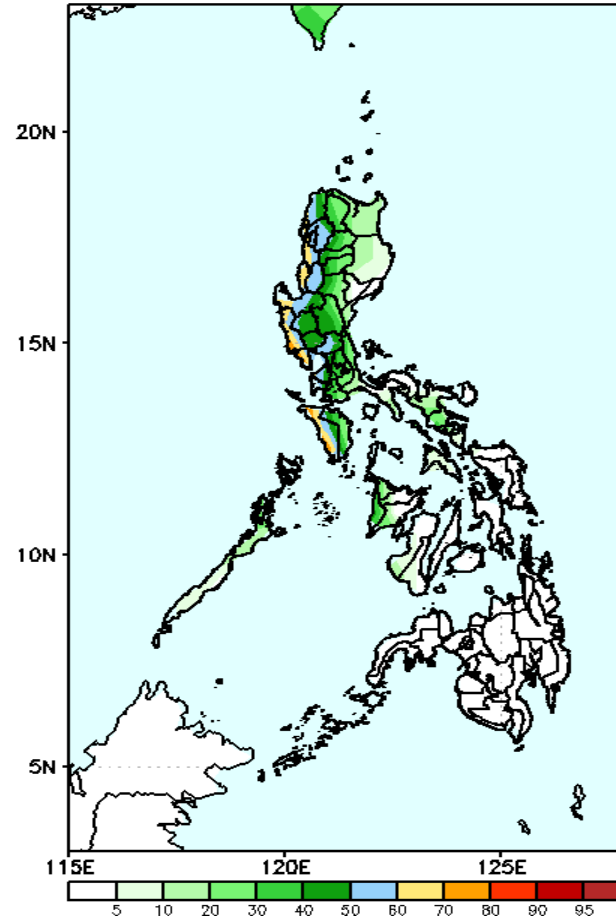
**Week 2: June 03-09, 2021**

GEFS Week-2 Exceedance Prob. > 100mm  
Valid: 20210603 – 20210609



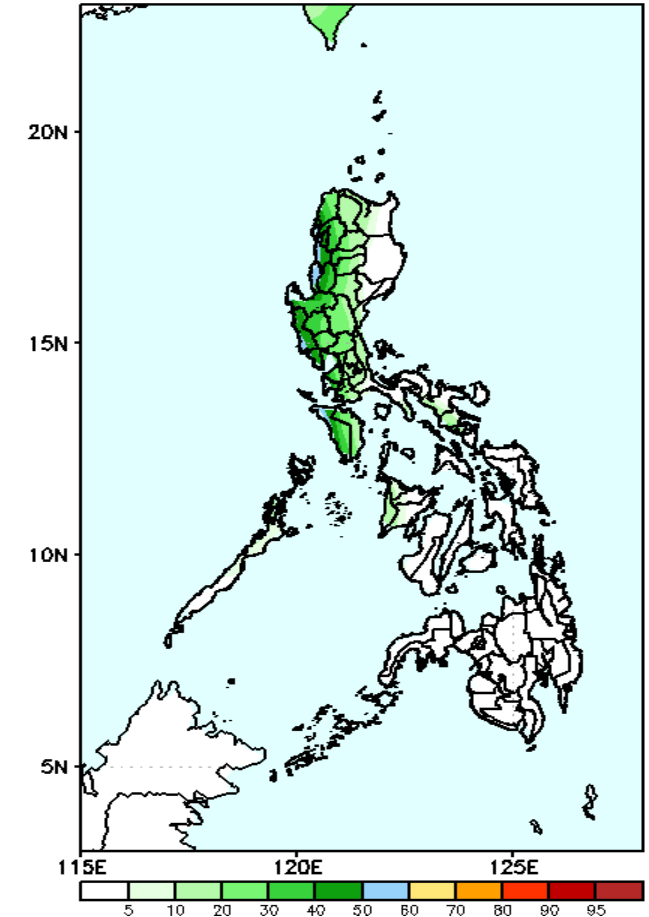
High probability of rainfall to exceed 100mm in most parts of Western Luzon while less likely for the rest of the country during the forecast period.

GEFS Week-2 Exceedance Prob. > 150mm  
Valid: 20210603 – 20210609



60-80% probability of rainfall to exceed 150mm in most parts of the country during the forecast period.

GEFS Week-2 Exceedance Prob. > 200mm  
Valid: 20210603 – 20210609

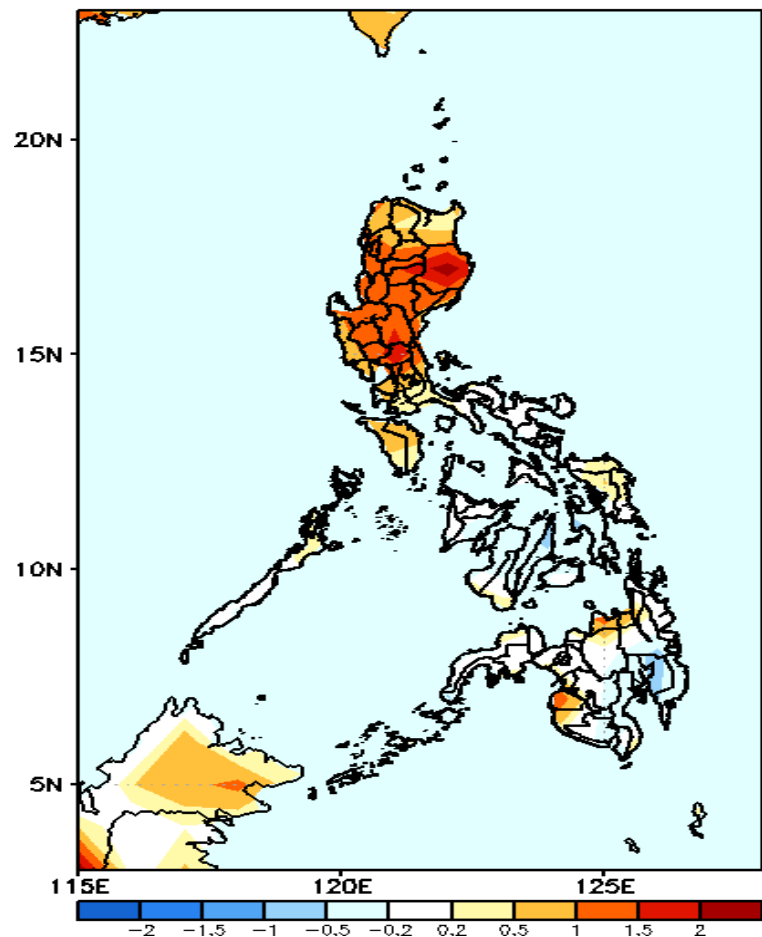


Less probability of rainfall to exceed 200mm in most parts of the country during the forecast period.



# GEFS Week-1 & 2 Forecasts: T2m Anomaly

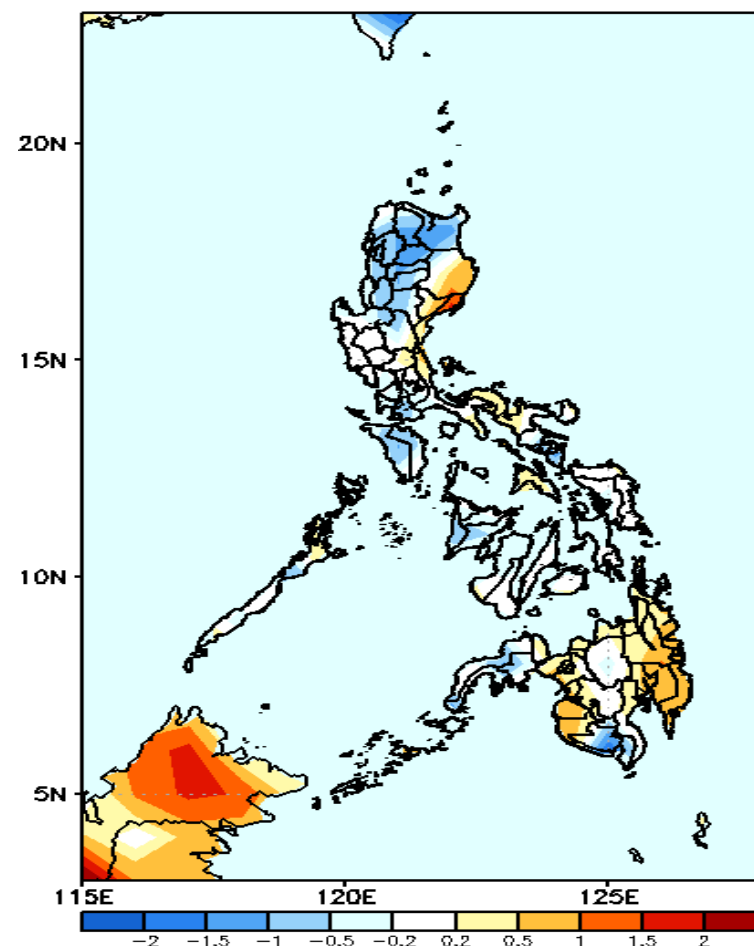
GEFS Week-1 T2m Anomaly  
Valid: 20210527 – 20210602



**2m Temperature Week 1: May 27 – June 02, 2021**

Warmer than average surface air temperature will likely experience in most parts of Luzon, Misamis Oriental and Maguindanao while average to slightly warmer than average temperature for the rest of the country during the forecast period.

GEFS Week-2 T2m Anomaly  
Valid: 20210603 – 20210609



**2m Temperature Week 2: June 03-09, 2021**

Slightly warmer to warmer than average surface air temperature will likely experience in Isabela, Quirino, Aurora, Bicol region and most parts of Mindanao while average to slightly cooler than average temperature for the rest of the country during the forecast period.