



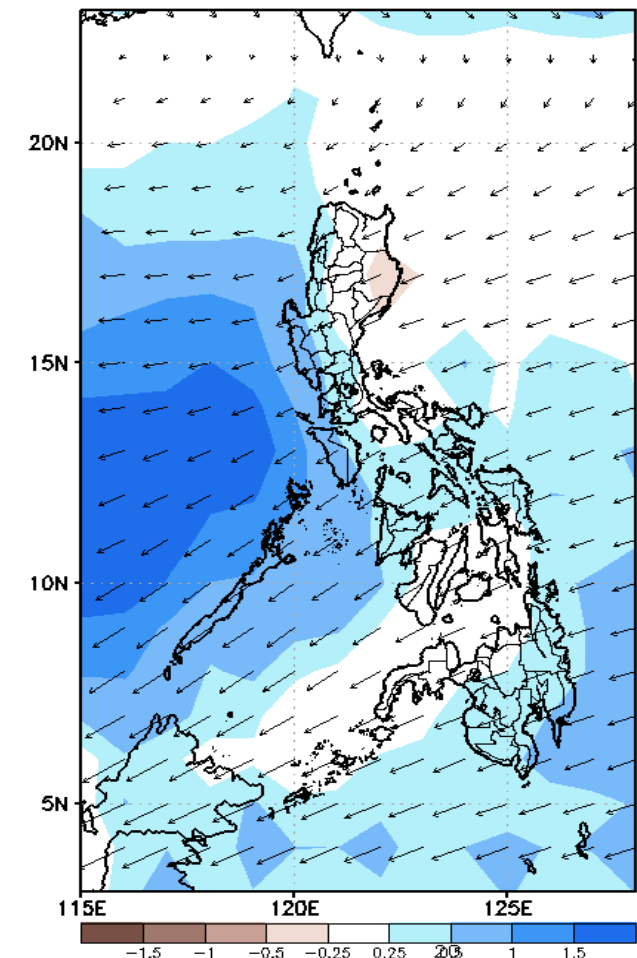
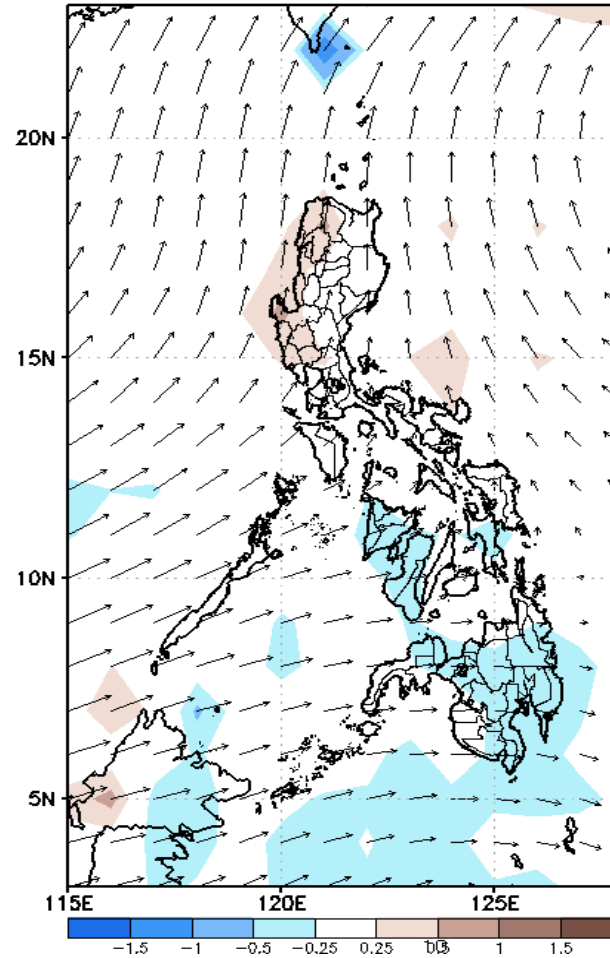
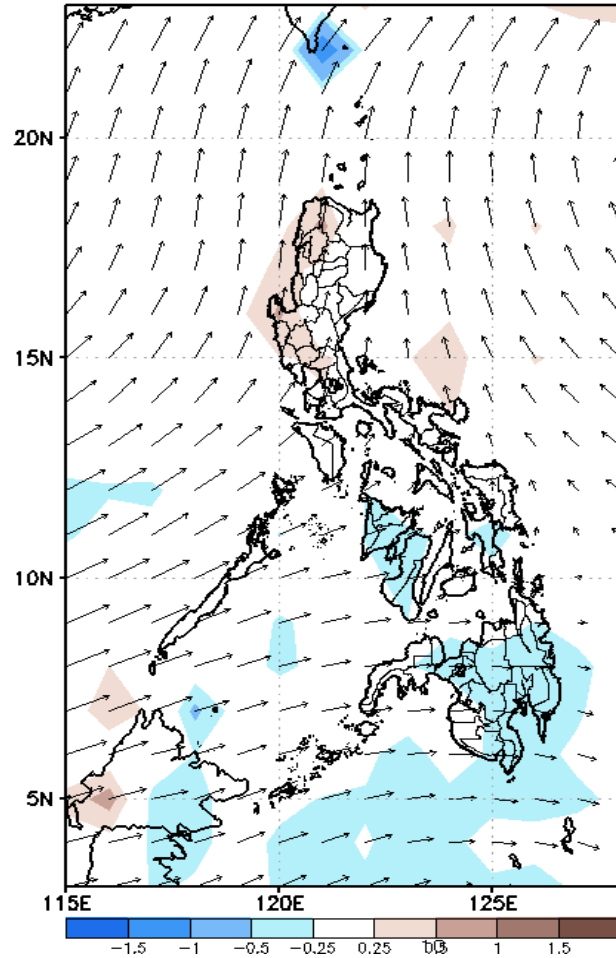
Week 1 & Week 2 Forecast for the Philippines using GEFS Model



GEFS Week-1 Forecasts: Wind Anomaly Forecast

Week 1: May 27- Jun 02, 2022

GEFS Week-1 850-hPa Divergence and Wind Anom
Valid: 20220527 - 20220602

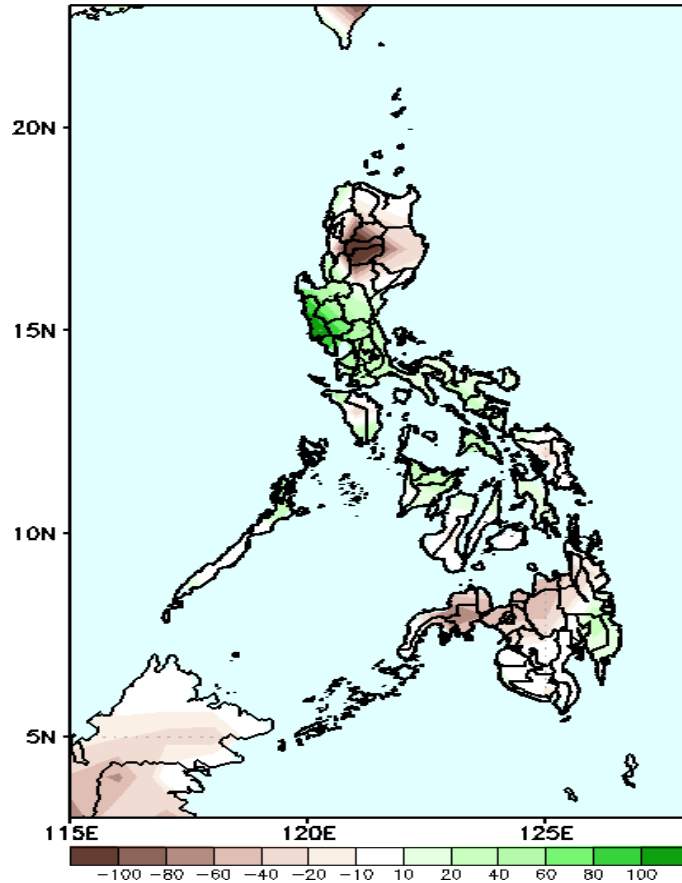


Southwest Monsoon is forecasted to affect the western sections of Luzon and Visayas while Easterlies affecting Mindanao and the eastern sections of the country during the forecast period

Precipitation Anomaly and Exceedance Probability > 25/50 mm

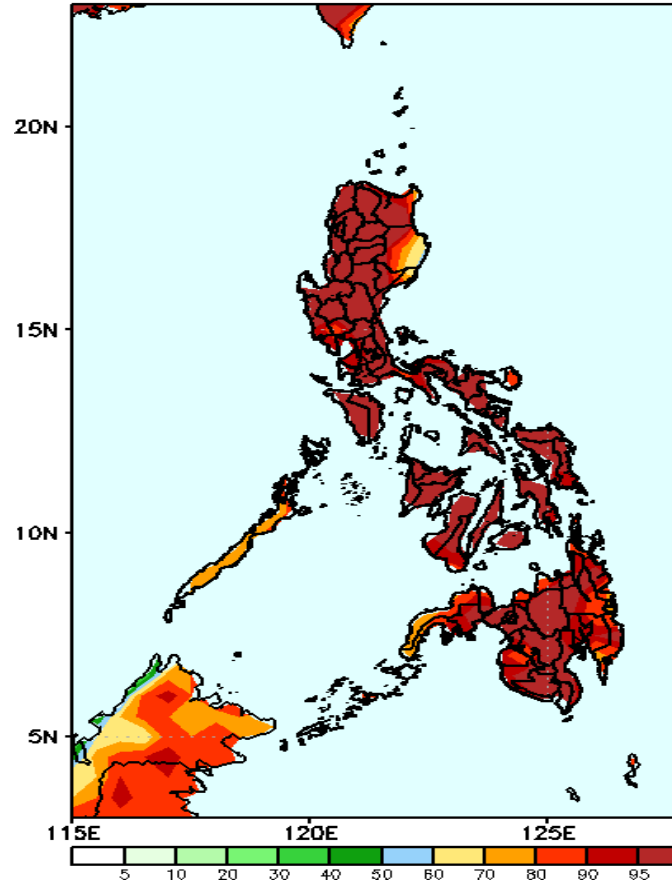
Week 1: May 27- Jun 02, 2022

GEFS Week-1 Precip Anomaly
Valid: 20220527 - 20220602



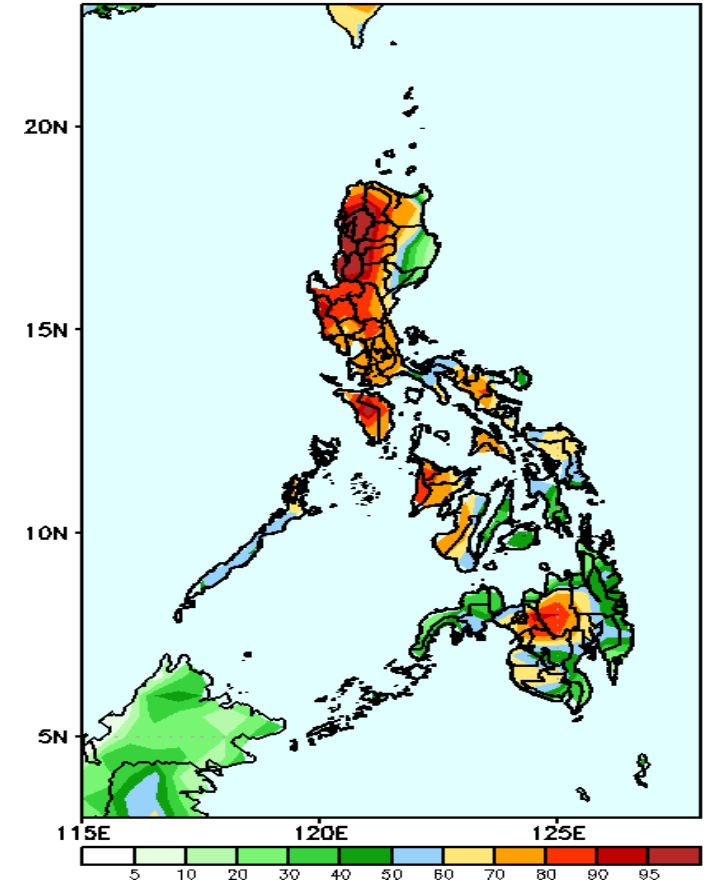
Rainfall deficit of more than 100mm is expected in Cordillera Region and 20-80mm in Samar Provinces and most parts of Mindanao while 40-100mm increase of rainfall in Pangasinan, Central and Southern Luzon (including Bicol region), Panay island and Davao Region during the forecast period.

GEFS Week-1 Exceedance Prob. > 25mm
Valid: 20220527 - 20220602



High probability of rainfall to exceed 25mm in most parts of the country during the forecast period.

GEFS Week-1 Exceedance Prob. > 50mm
Valid: 20220527 - 20220602

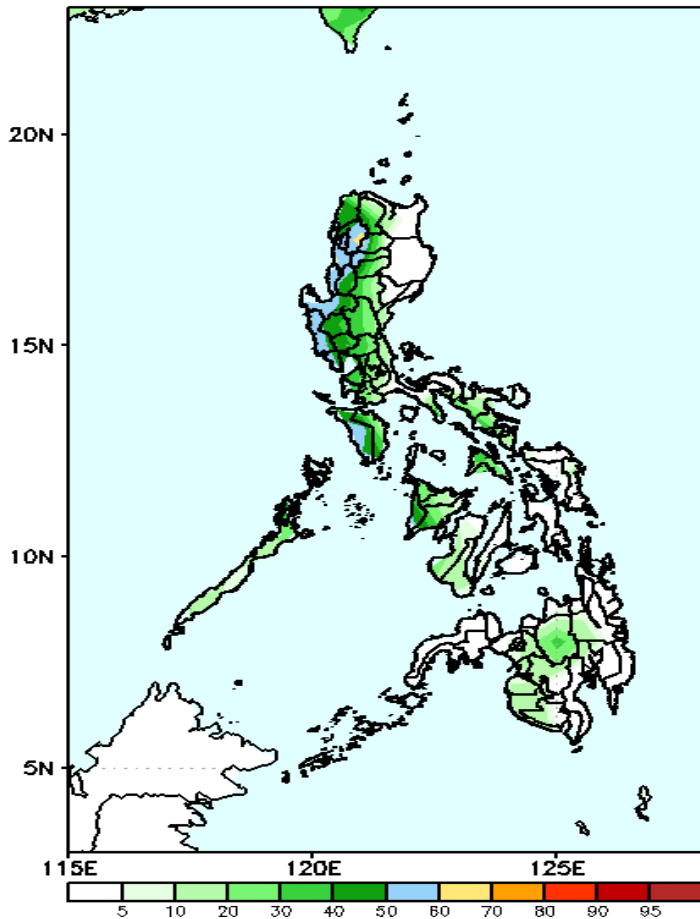


High probability of rainfall to exceed 50mm in most parts of Luzon, eastern and western Visayas and central parts of Mindanao while less likely in eastern isabela, Quirino and Baler, Central Visayas and the rest of Mindanao during the forecast period.

Exceedance Probability > 100/150/200 mm

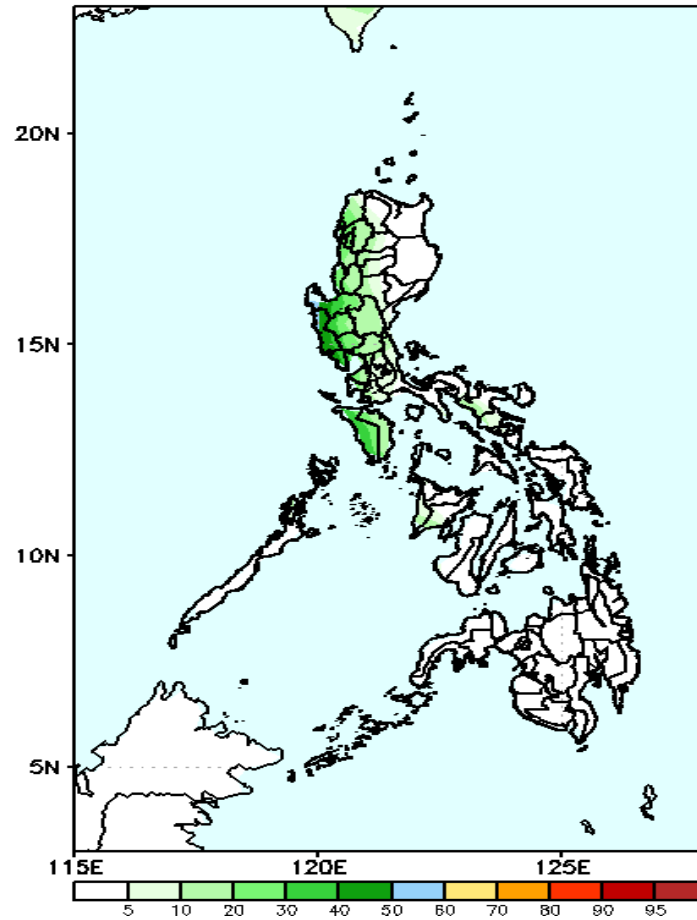
Week 1: May 27- Jun 02, 2022

GEFS Week-1 Exceedance Prob. > 100mm
Valid: 20220527 - 20220602



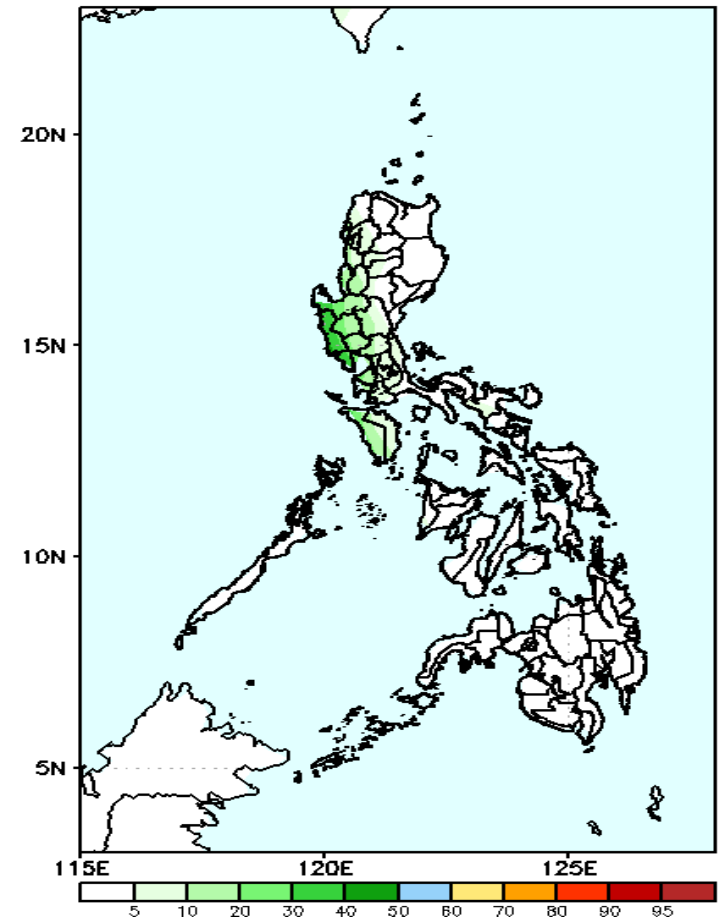
Low probability of rainfall to exceed 100mm in most parts of the country during the forecast period.

GEFS Week-1 Exceedance Prob. > 150mm
Valid: 20220527 - 20220602



Low probability of rainfall to exceed 150mm in most parts of the country during the forecast period.

GEFS Week-1 Exceedance Prob. > 200mm
Valid: 20220527 - 20220602



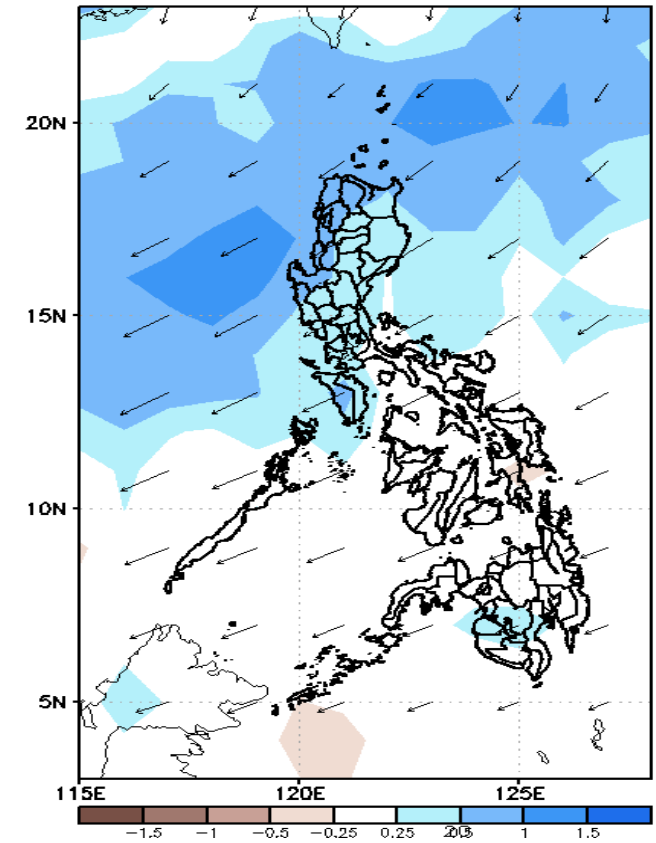
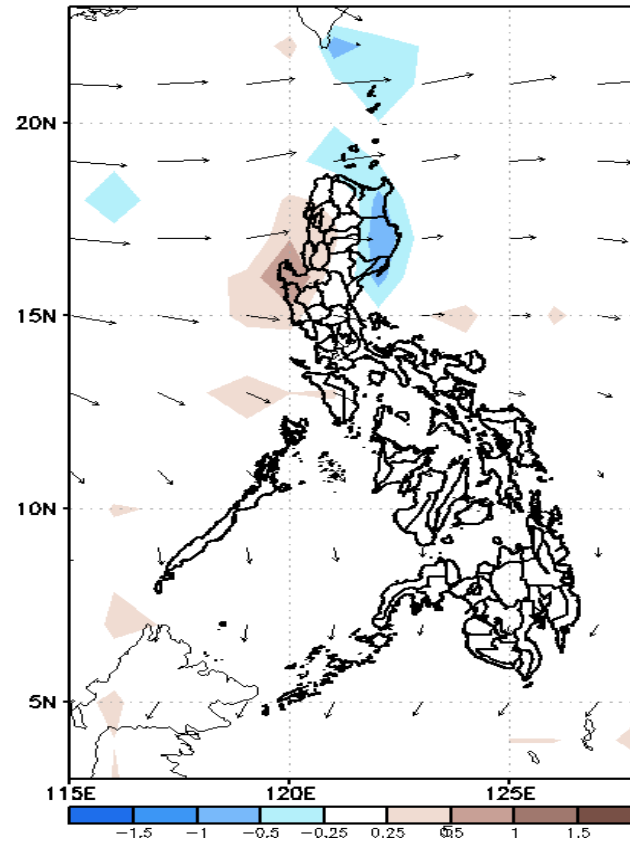
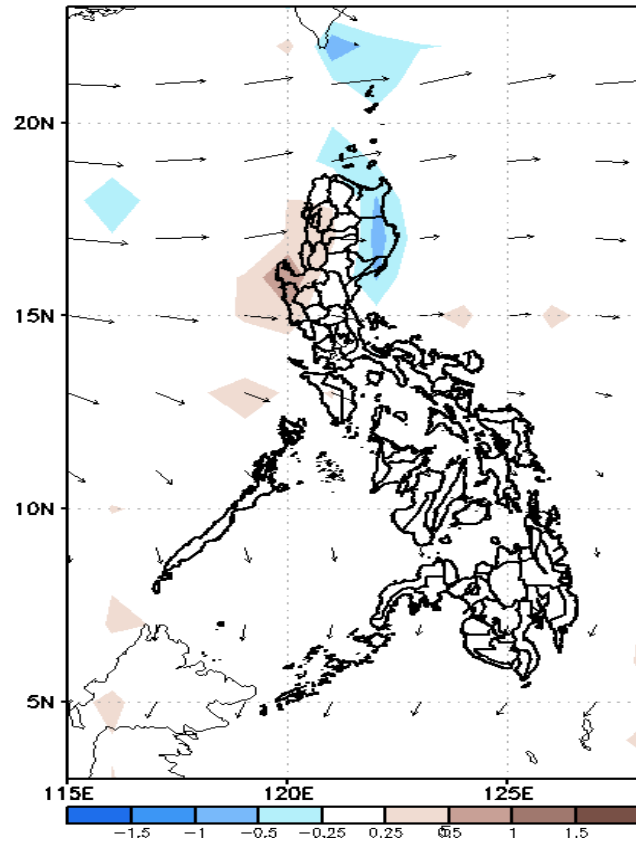
Low probability of rainfall to exceed 200mm in most parts of the country during the forecast period.



GEFS Week-2 Forecasts: Wind Anomaly Forecast

Week 2: Jun 03-9, 2022

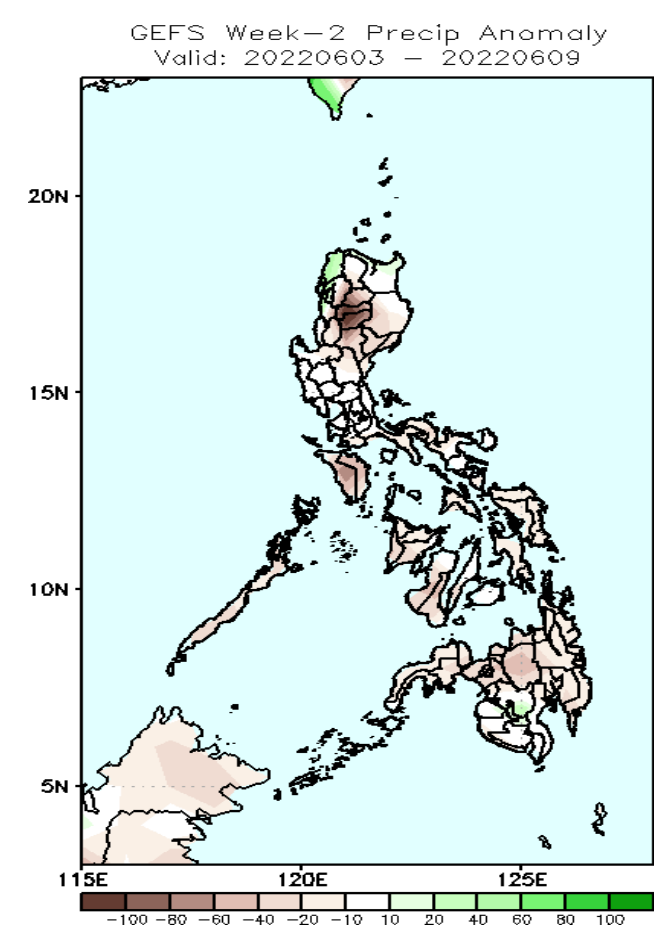
GEFS Week-2 850-hPa Divergence and Wind Anom
Valid: 20220603 - 20220609



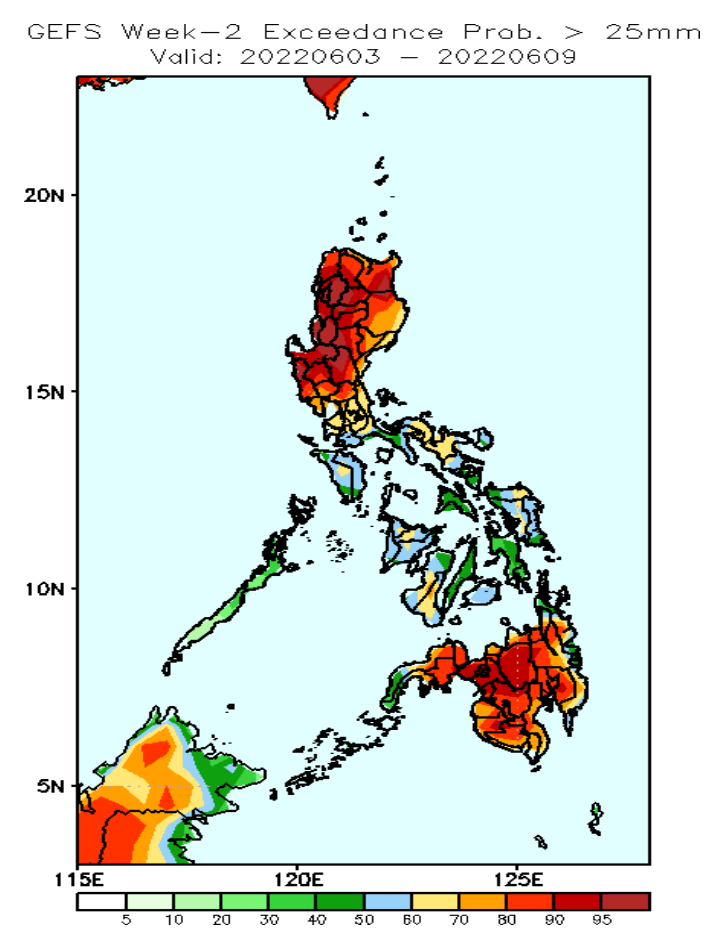
Southwest Monsoon is forecasted to affect most parts of the country during the forecast period.

Precipitation Anomaly and Exceedance Probability > 25/50 mm

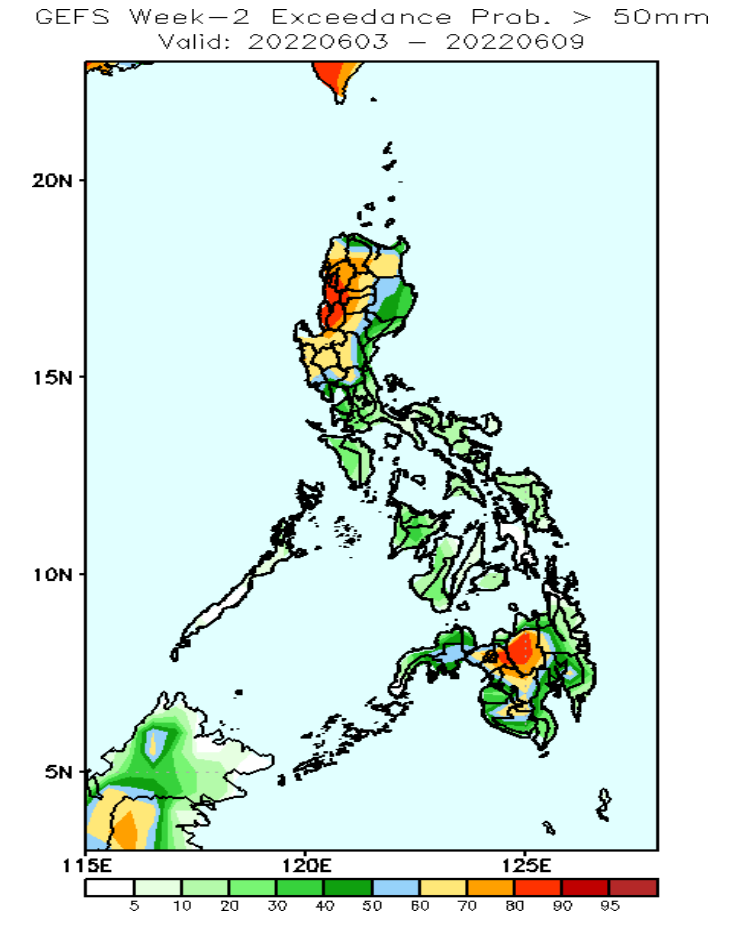
Week 2: Jun 03-9, 2022



Rainfall deficit of 40-80mm is expected in most parts of the country during the forecast period .



High probability of rainfall to exceed 25mm in most parts of Luzon and Mindanao while 50-80% chance in Visayas during the forecast period.

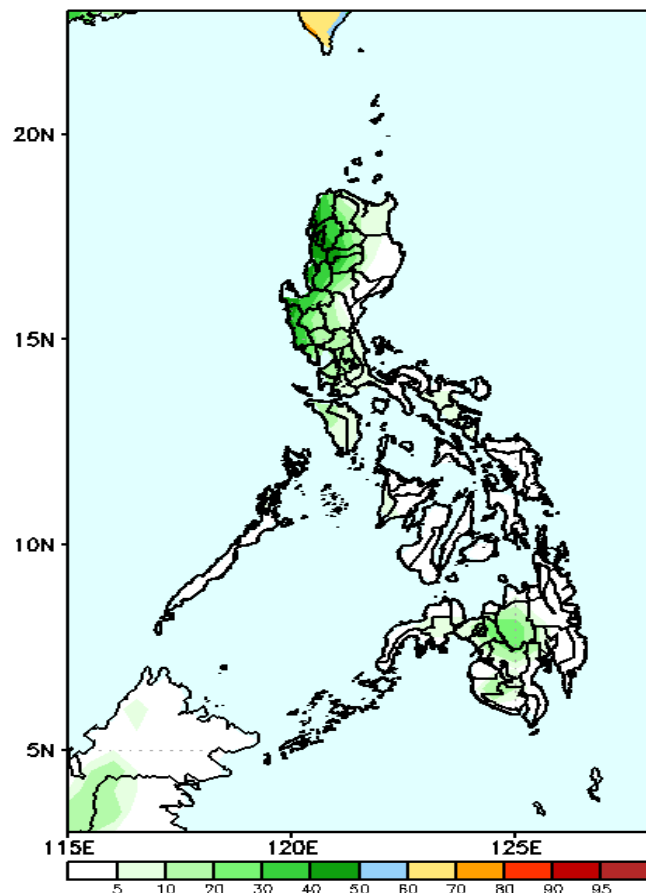


High probability of rainfall to exceed 50mm in most areas of Ilocos Region, CAR, Central Luzon, Bukidnon and Lanao del Sur while less likely for the rest of the county during the forecast period.

Exceedance Probability > 100/150/200 mm

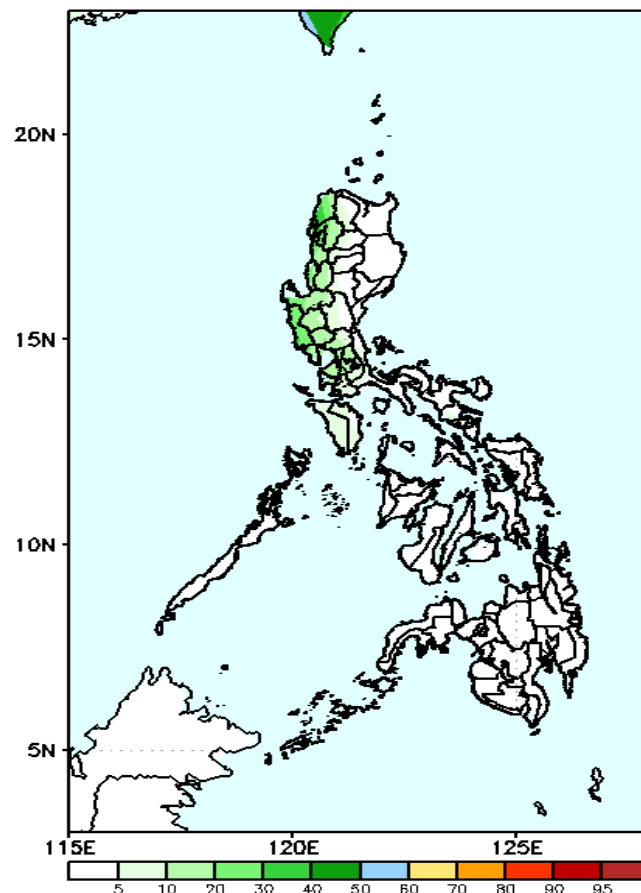
Week 2: Jun 03-9, 2022

GEFS Week-2 Exceedance Prob. > 100mm
Valid: 20220603 – 20220609



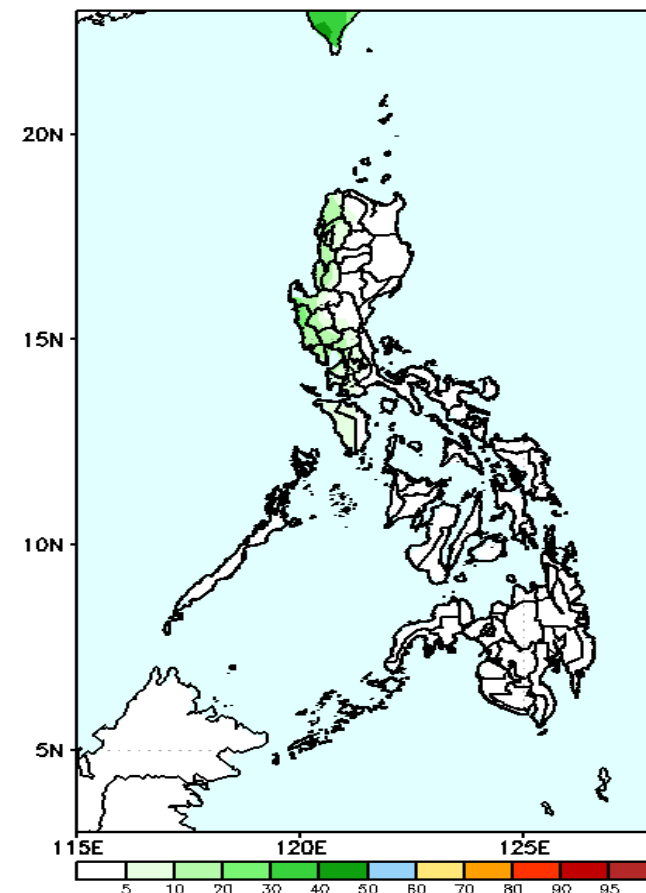
Low probability of rainfall to exceed 100mm in most parts of the country except some parts of Western Luzon during the forecast period.

GEFS Week-2 Exceedance Prob. > 150mm
Valid: 20220603 – 20220609



Low probability of rainfall to exceed 150mm in most parts of the country during the forecast period.

GEFS Week-2 Exceedance Prob. > 200mm
Valid: 20220603 – 20220609

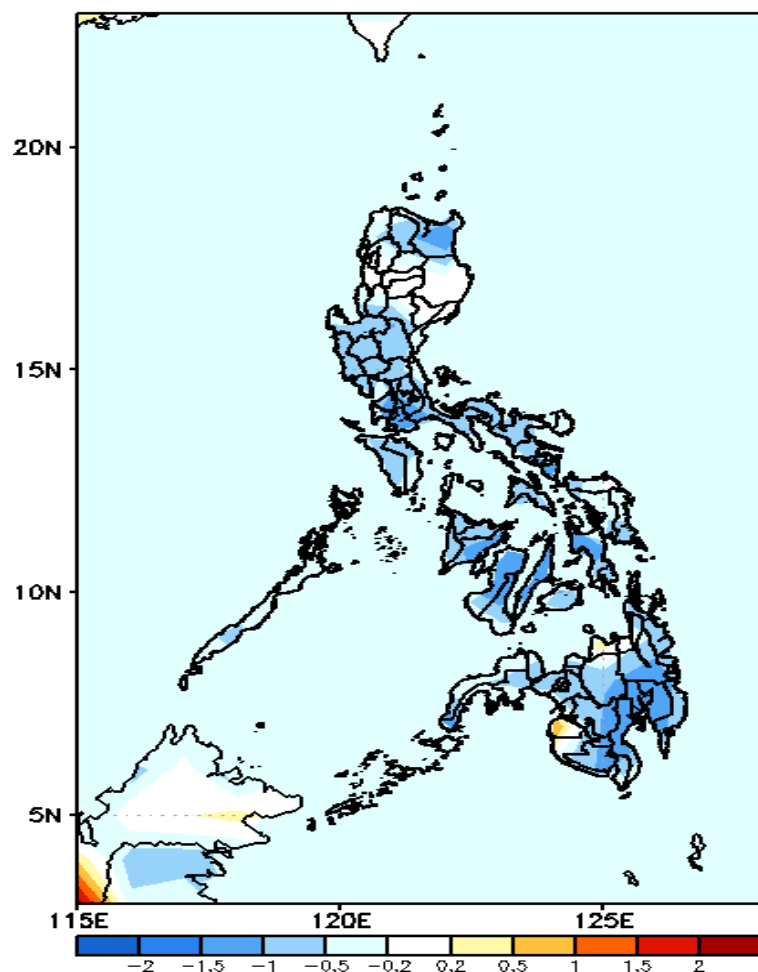


Low probability of rainfall to exceed 200mm in most parts of the country during the forecast period.



GEFS Week-1 & 2 Forecasts: T2m Anomaly

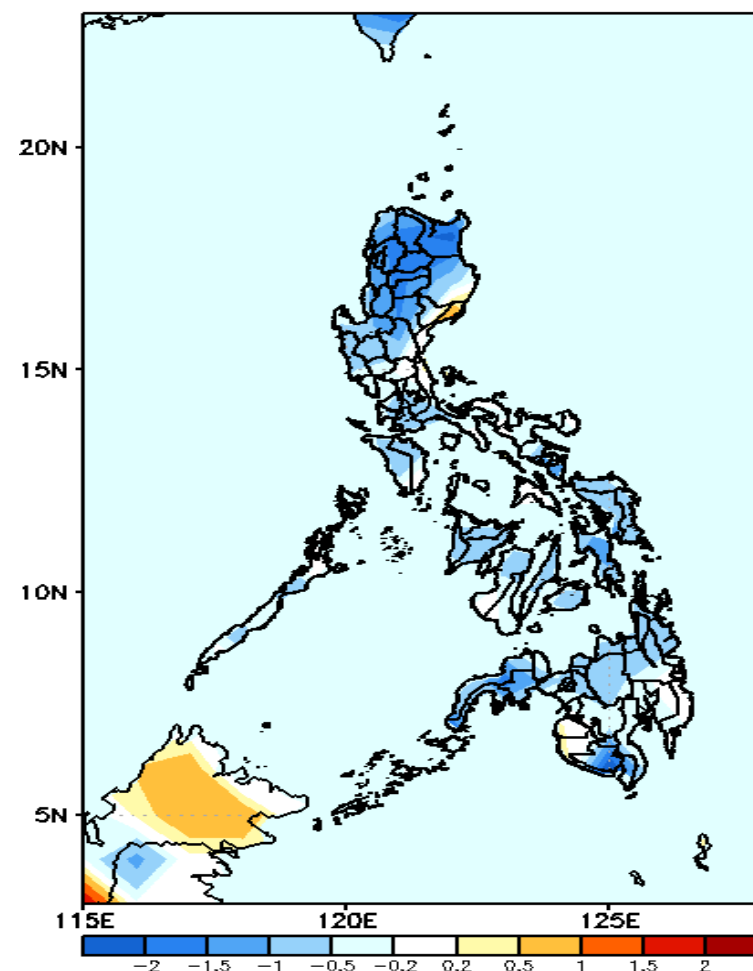
GEFS Week-1 T2m Anomaly
Valid: 20220527 - 20220602



2m Temperature Week 1: May 27- Jun 02, 2022

Slightly cooler to cooler surface air temperature will likely experience in most parts of the country except in Isabela and some areas in Ilocos and cordillera Region where average temperature is expected during the forecast period.

GEFS Week-2 T2m Anomaly
Valid: 20220603 - 20220609



2m Temperature Week 2: Jun 03-9, 2022

Slightly cooler to cooler surface air temperature will likely experience in most parts of the country except in Davao Region. Maguindanao and Sultan Kudarat where average temperature is expected during the forecast period.