



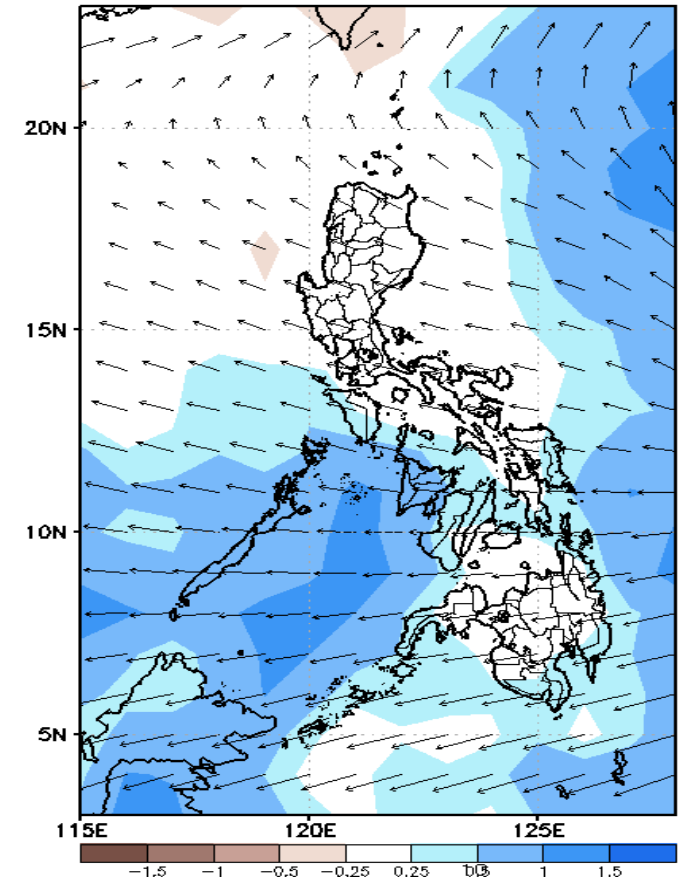
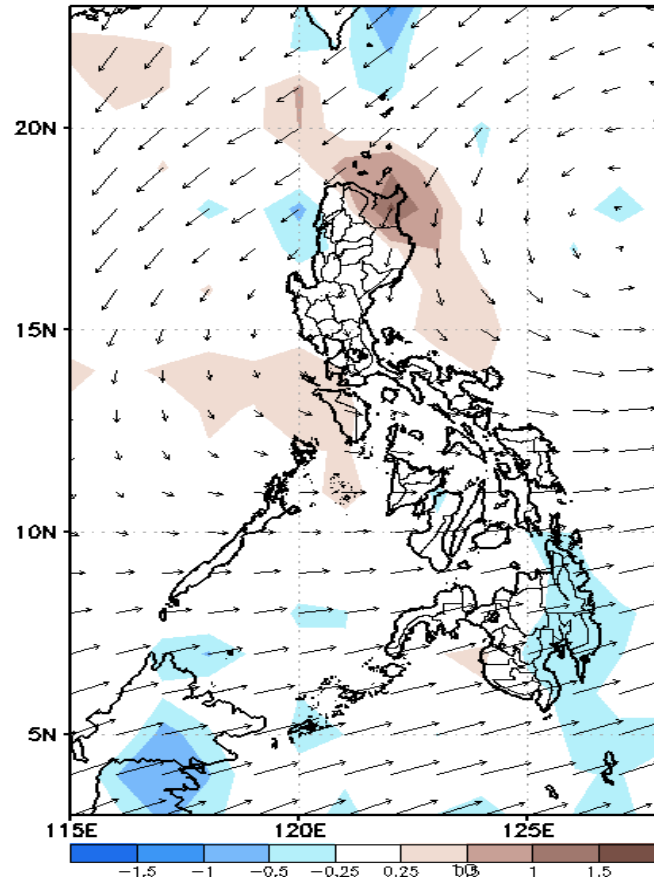
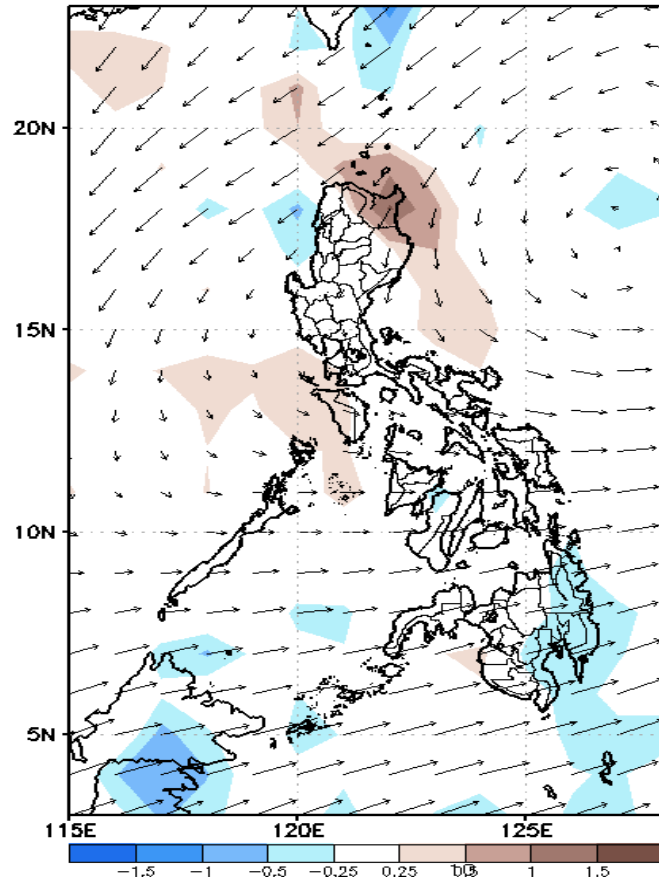
Week 1 & Week 2 Forecast for the Philippines using GEFS Model



GEFS Week-1 Forecasts: Wind Anomaly Forecast

Week 1: Oct 27- Nov 02, 2022

GEFS Week-1 850-hPa Divergence and Wind AnomGEFS Week-1 700-hPa Divergence and Wind AnorGEFS Week-1 200-hPa Divergence and Wind An
Valid: 20221027 - 20221102 Valid: 20221027 - 20221102 Valid: 20221027 - 20221102



Northeast Monsoon continues to affect Extreme Northern Luzon while a Cyclonic circulation affecting Bicol region) and Eastern Visayas. Westerly wind affecting Southern Mindanao. While a cyclonic circulation affecting Eastern Visayas during the forecast period.

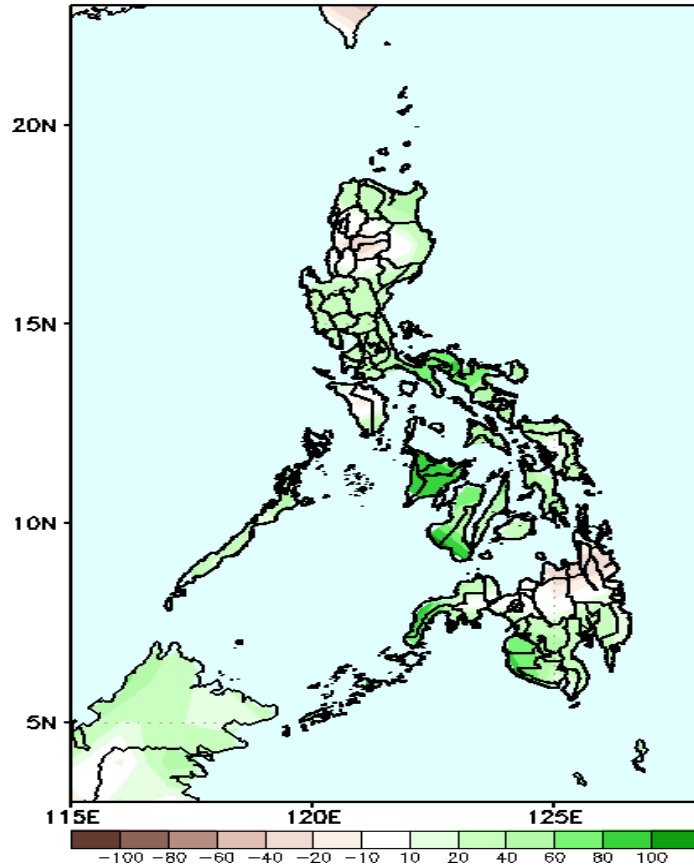
Bayong
AGASA



Precipitation Anomaly and Exceedance Probability > 25/50 mm

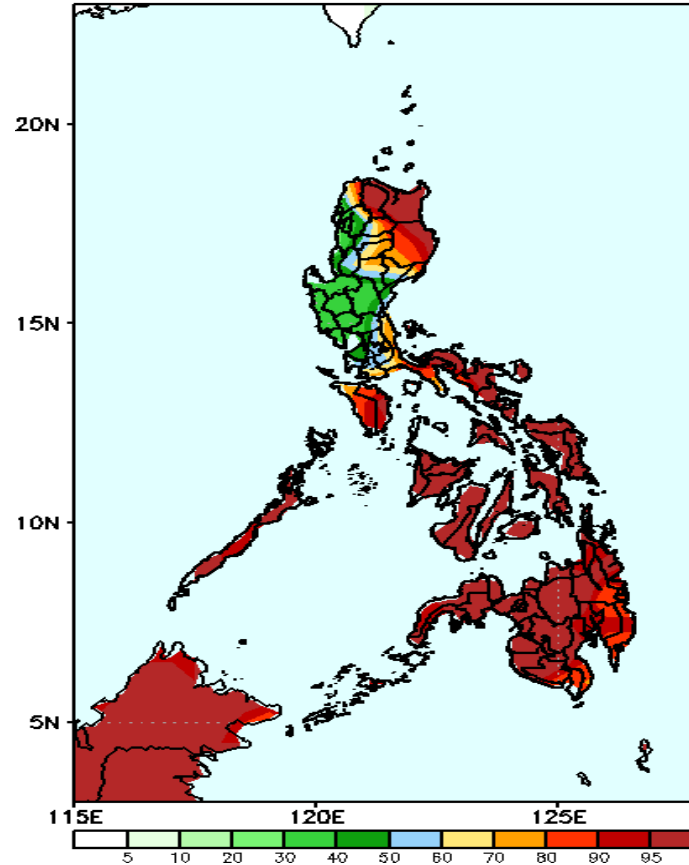
Week 1: Oct 27- Nov 02, 2022

GEFS Week-1 Precip Anomaly
Valid: 20221027 - 20221102



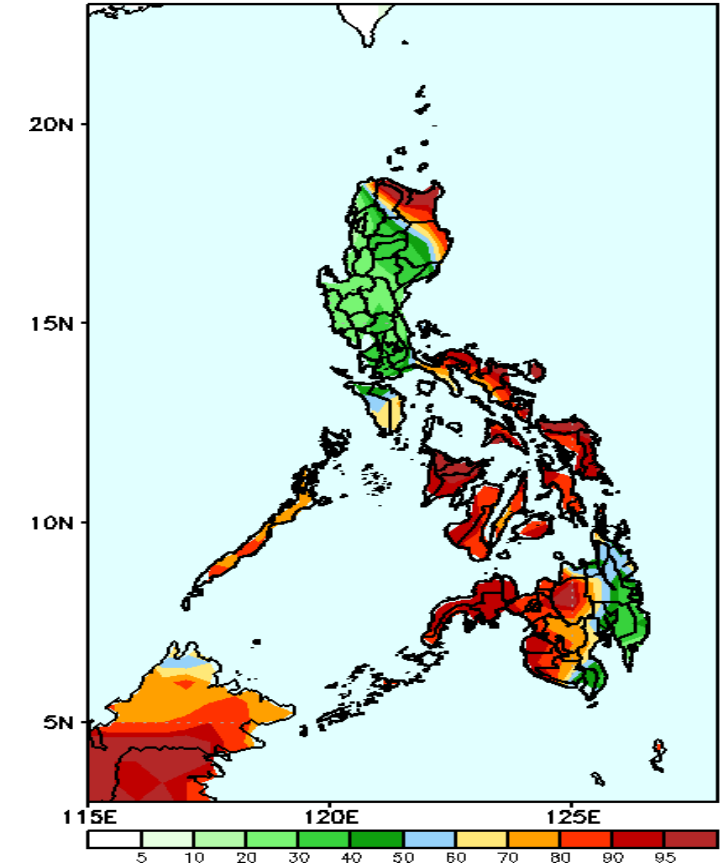
Increase of rainfall of 40-100mm is expected in most parts of the country except in Mt. Province, Ifugao and CARAGA Region where there is 10-40mm rainfall deficit during the forecast period.

GEFS Week-1 Exceedance Prob. > 25mm
Valid: 20221027 - 20221102



High probability of rainfall to exceed 25mm in most parts of northern & southern Luzon, Visayas and Mindanao while less likely for the rest of Luzon during the forecast period.

GEFS Week-1 Exceedance Prob. > 50mm
Valid: 20221027 - 20221102

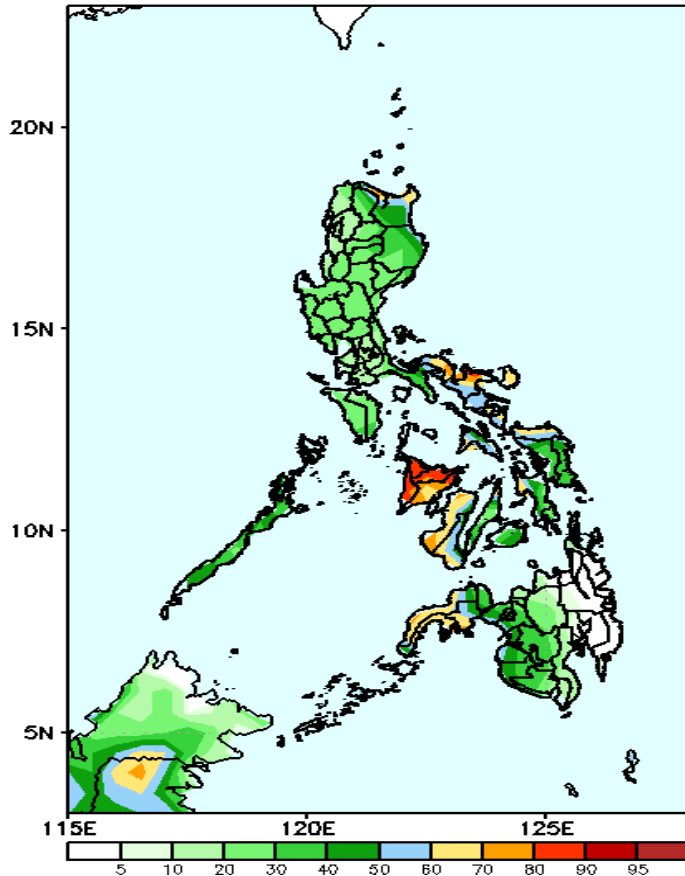


High probability of rainfall to exceed 50mm in Apayao, Cagayan, Isabela, Southern Luzon, Visayas, western Mindanao and Bukidnon while less likely for the rest of the country during the forecast period.

Exceedance Probability > 100/150/200 mm

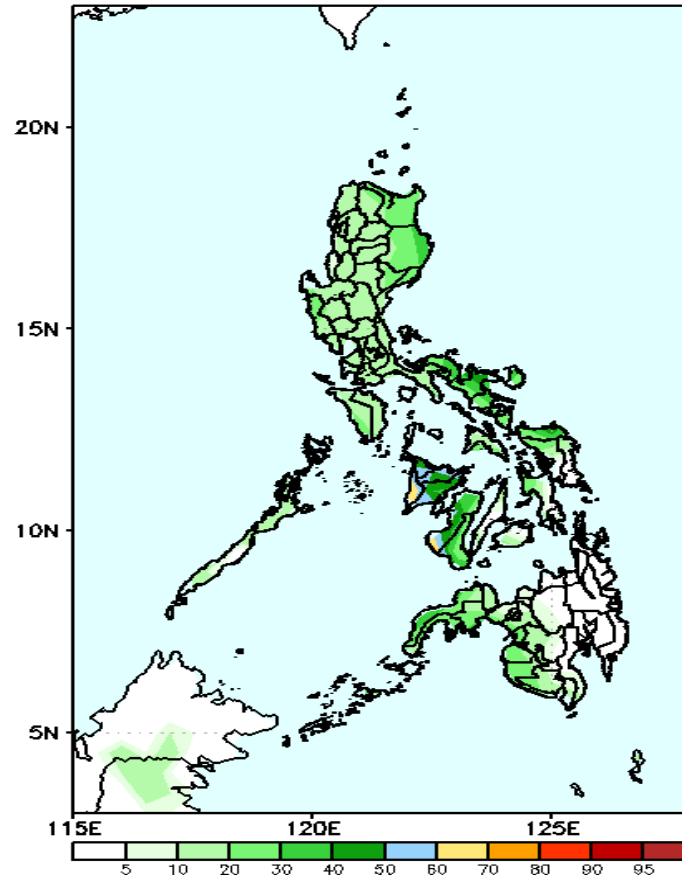
Week 1: Oct 27- Nov 02, 2022

GEFS Week-1 Exceedance Prob. > 100mm
Valid: 20221027 - 20221102



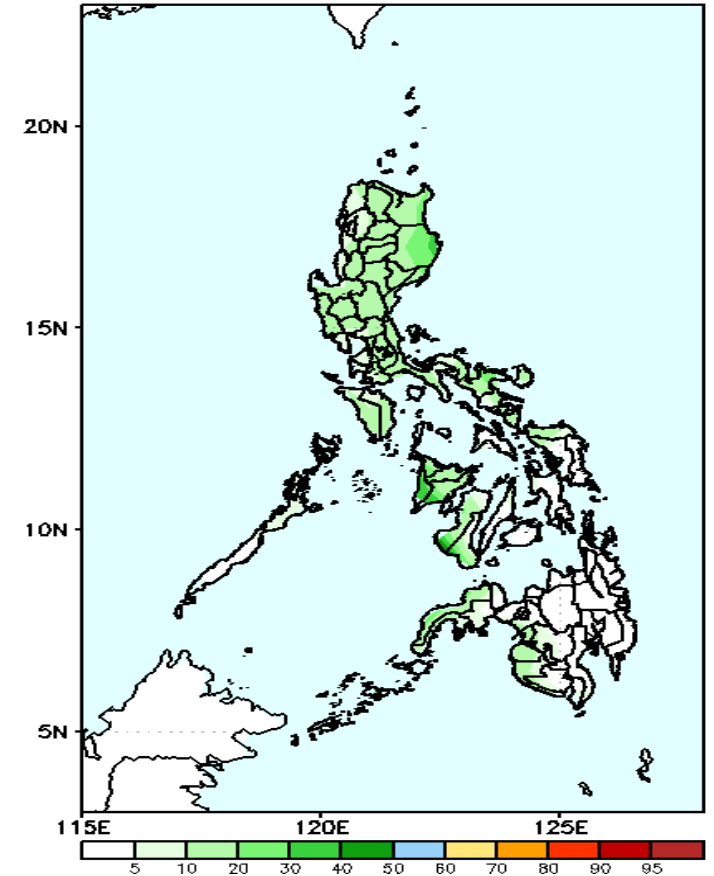
High probability of rainfall to exceed 100mm in some areas in Bicol Region, western Visayas and Zamboanga Peninsula while less likely for the rest of the country during the forecast period.

GEFS Week-1 Exceedance Prob. > 150mm
Valid: 20221027 - 20221102



Low probability of rainfall to exceed 150mm in most parts of the country during the forecast period.

GEFS Week-1 Exceedance Prob. > 200mm
Valid: 20221027 - 20221102

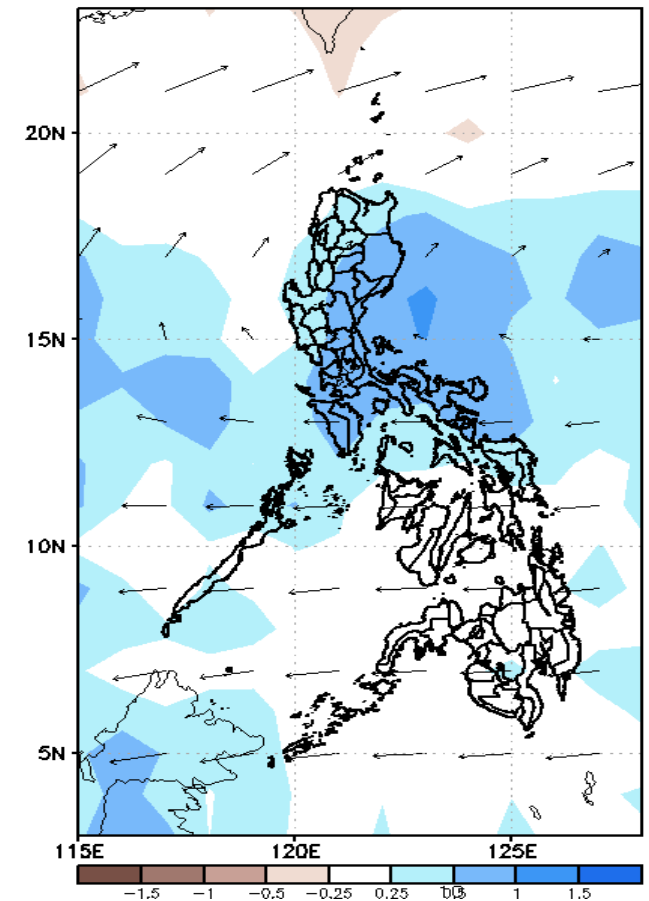
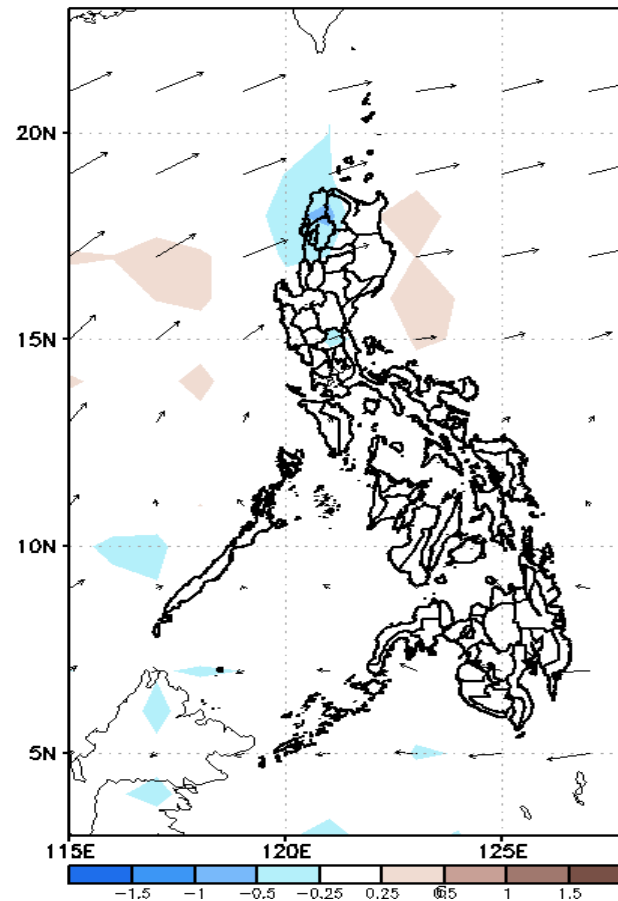
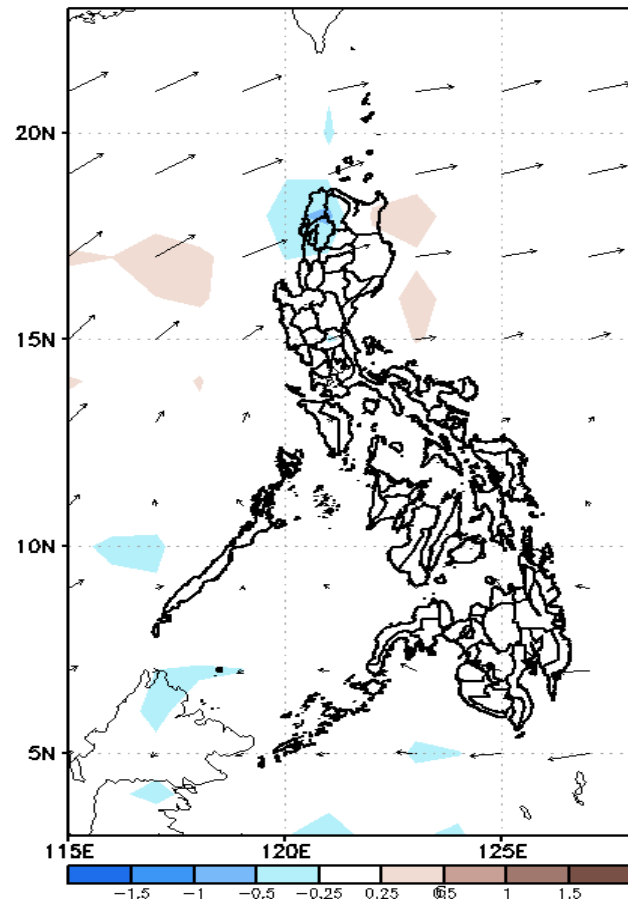


Low probability of rainfall to exceed 200mm in most parts of the country during the forecast period.

GEFS Week-2 Forecasts: Wind Anomaly Forecast

Week 2: Nov 03-09, 2022

GEFS Week-2 850-hPa Divergence and Wind Anom
Valid: 20221103 - 20221109

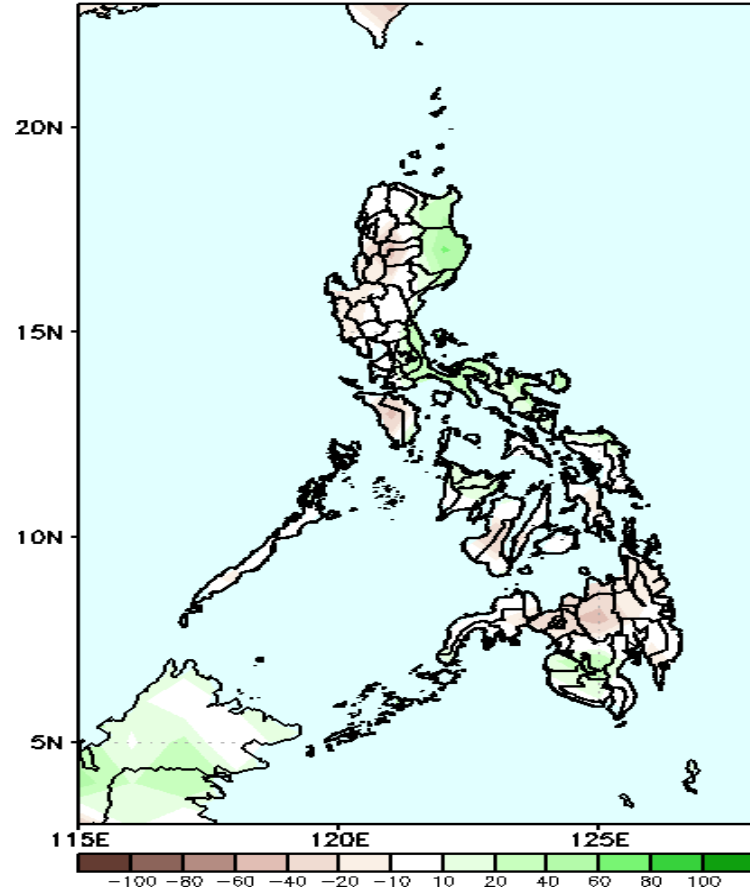


A cyclonic circulation is forecasted to affect Luzon and Visayas; while easterlies affecting Mindanao during the forecast period.

Precipitation Anomaly and Exceedance Probability > 25/50 mm

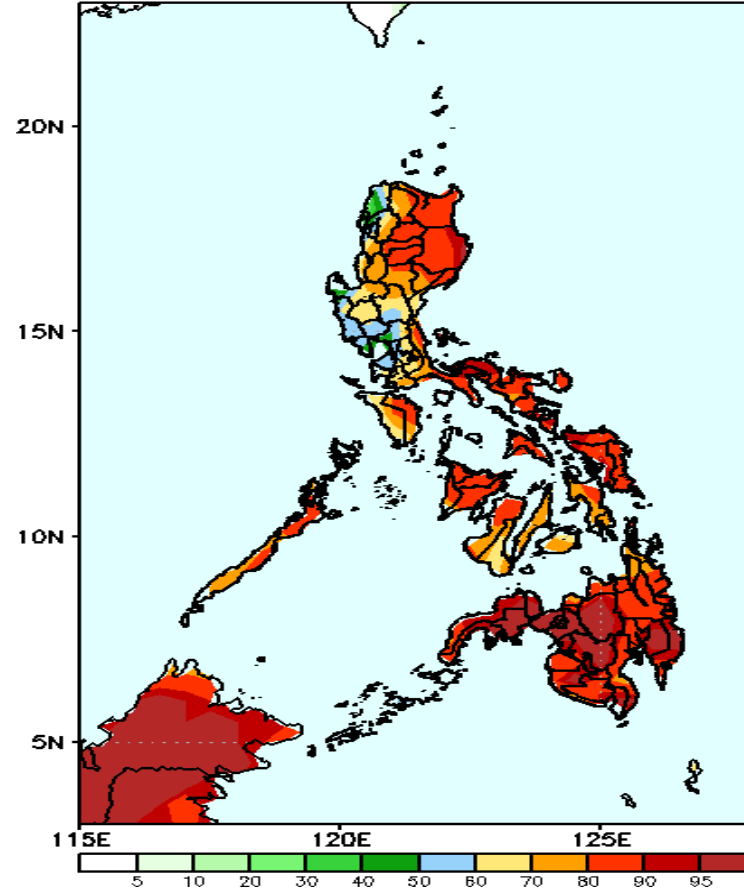
Week 2: Nov 03-09, 2022

GEFS Week-2 Precip Anomaly
Valid: 20221103 - 20221109



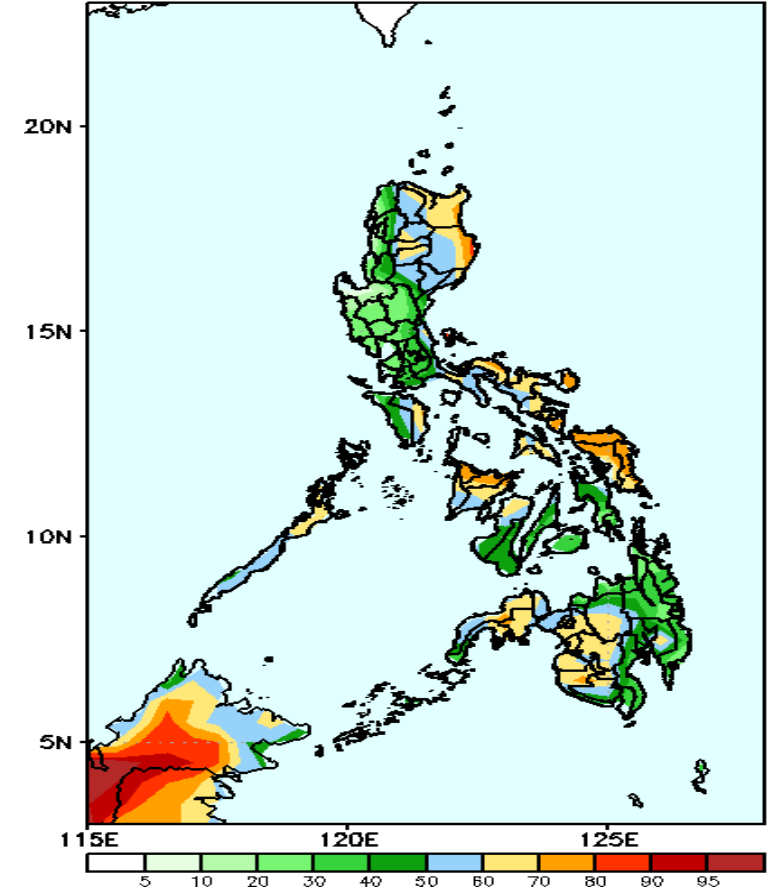
Rainfall deficit of 40-80mm is expected in most parts of the country except in some areas in eastern Luzon and southwestern Mindanao where there is 20-70mm increase of rainfall during the forecast period.

GEFS Week-2 Exceedance Prob. > 25mm
Valid: 20221103 - 20221109



High probability of rainfall to exceed 25mm in most parts of the country during the forecast period.

GEFS Week-2 Exceedance Prob. > 50mm
Valid: 20221103 - 20221109



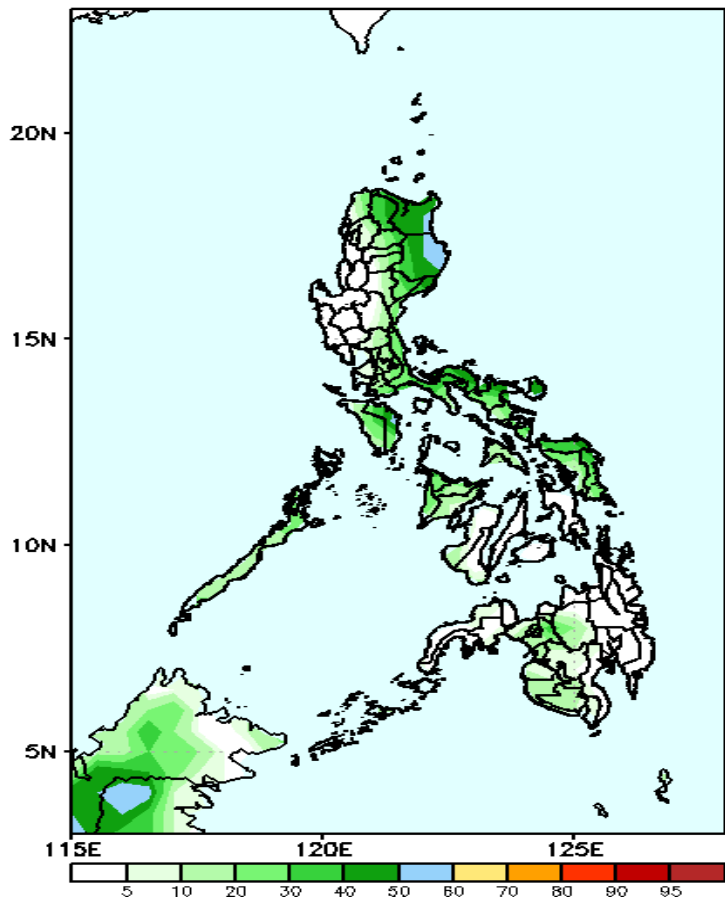
50-80% probability of rainfall to exceed 50mm in most parts of the country during the forecast period.



Exceedance Probability > 100/150/200 mm

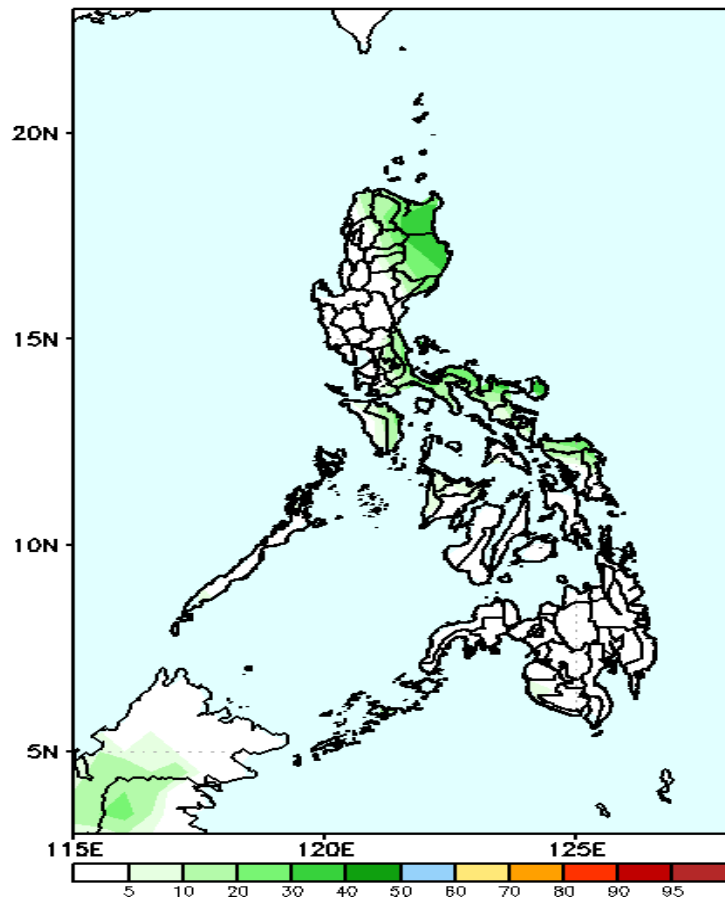
Week 2: Nov 03-09, 2022

GEFS Week-2 Exceedance Prob. > 100mm
Valid: 20221103 – 20221109



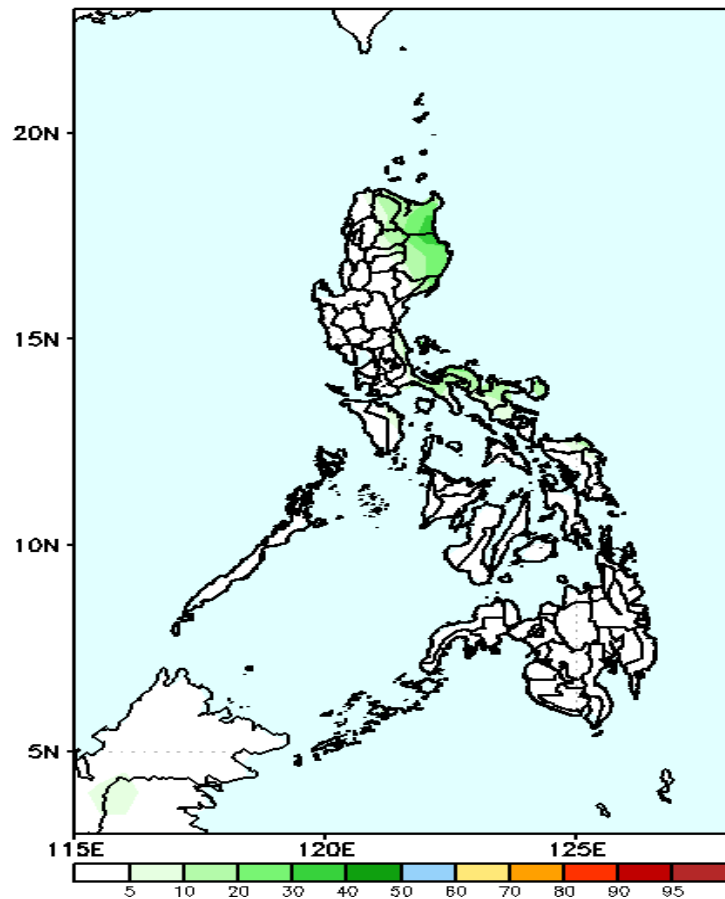
Low probability of rainfall to exceed 100mm in most parts of the country during the forecast period.

GEFS Week-2 Exceedance Prob. > 150mm
Valid: 20221103 – 20221109



Low probability of rainfall to exceed 150mm in most parts of the country during the forecast period.

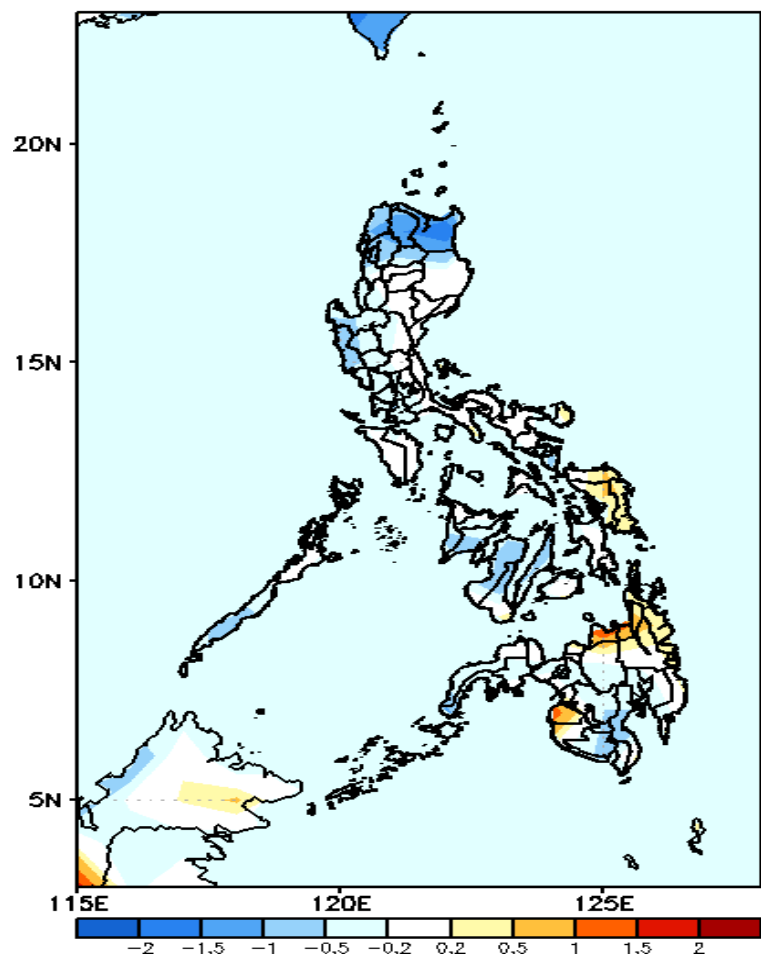
GEFS Week-2 Exceedance Prob. > 200mm
Valid: 20221103 – 20221109



Low probability of rainfall to exceed 200mm in most parts of the country during the forecast period.

GEFS Week-1 & 2 Forecasts: T2m Anomaly

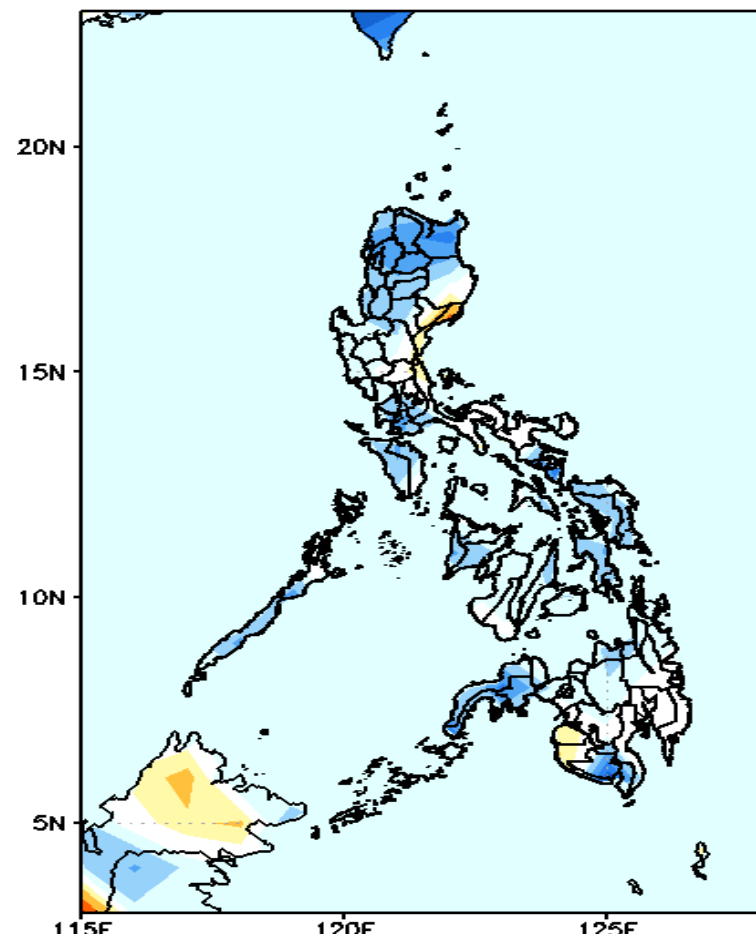
GEFS Week-1 T2m Anomaly
Valid: 20221027 - 20221102



2m Temperature Week 1: Oct 27- Nov 02, 2022

Near to cooler than average surface air temperature will likely experience in most parts of the country except in Samar provinces, Misamis Or., Agusan del Norte & Sur and Maguindanao where slightly warmer to warmer than average surface air temperature is expected during the forecast period.

GEFS Week-2 T2m Anomaly
Valid: 20221103 - 20221109



2m Temperature Week 2: Nov 03-09, 2022

Near to cooler than average surface air temperature will likely experience in most parts of the country except in some areas in eastern Luzon, Maguindanao and Sultan Kudarat where slightly warmer than average surface air temperature is expected during the forecast period.