



USAID
FROM THE AMERICAN PEOPLE



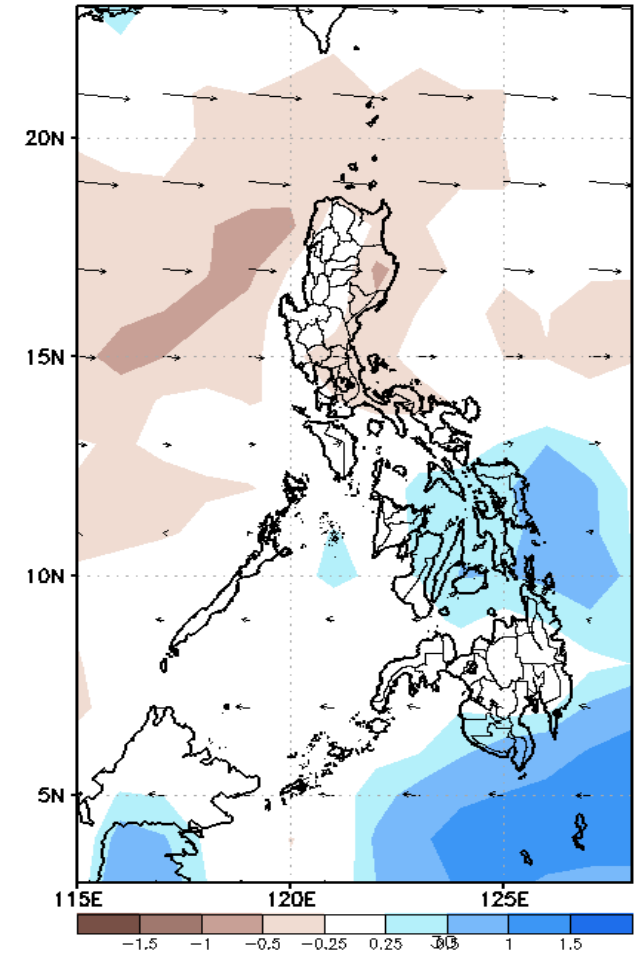
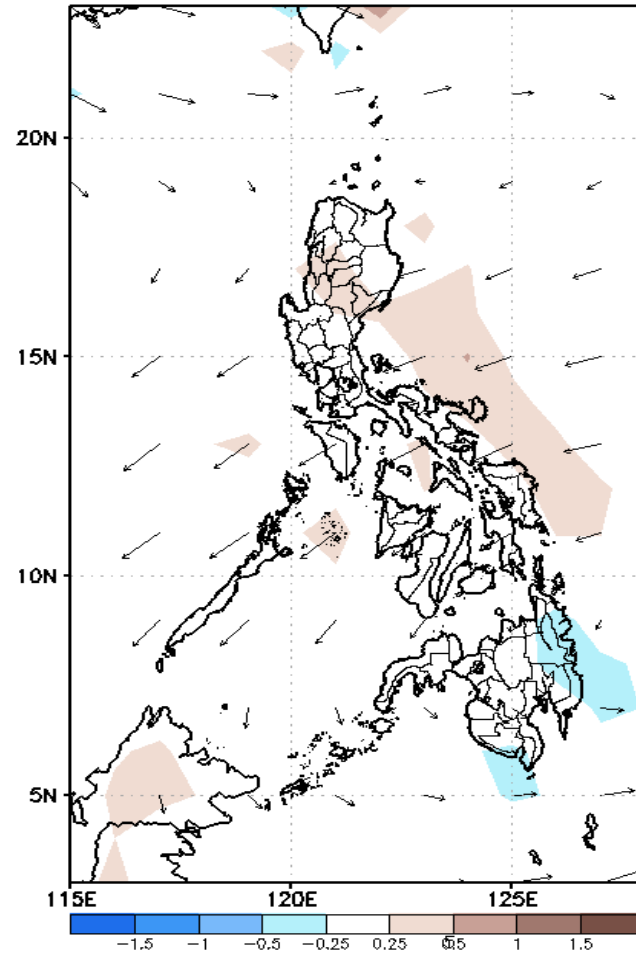
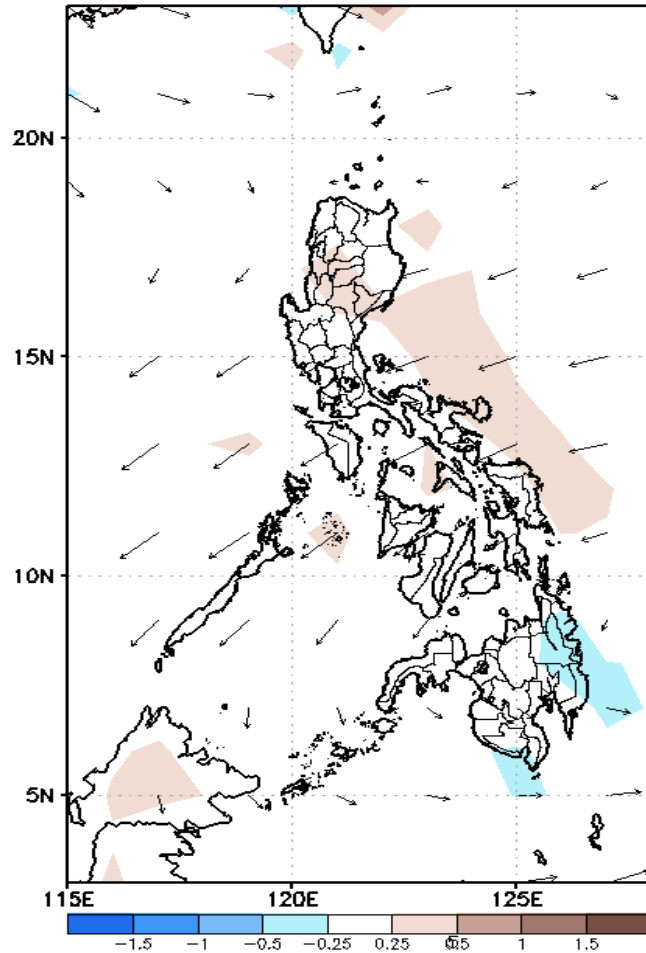
Week 1 & Week 2 Forecast for the Philippines using GEFS Model



GEFS Week-1 Forecasts: Divergence & Wind Anomaly

Week 1: April 27 – May 03, 2020

GEFS Week-1 850-hPa Divergence and Wind Anom GEFS Week-1 700-hPa Divergence and Wind Anom GEFS Week-1 200-hPa Divergence and Wind Anom
Valid: 20200427 – 20200503 Valid: 20200427 – 20200503 Valid: 20200427 – 20200503



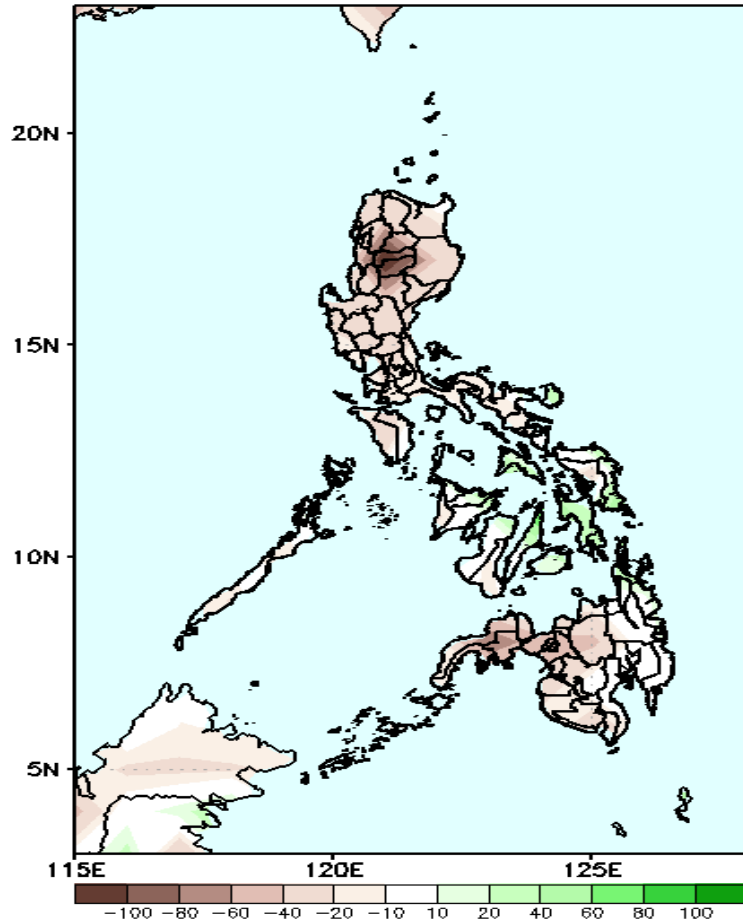
Upper level (750 hPa) Divergence suggest likelihood of precipitation in some parts of Luzon, Visayas and northern Mindanao due to localize thunderstorm. Easterlies affecting most parts of the country during the forecast period.



Precipitation Anomaly and Exceedance Probability > 25/50 mm

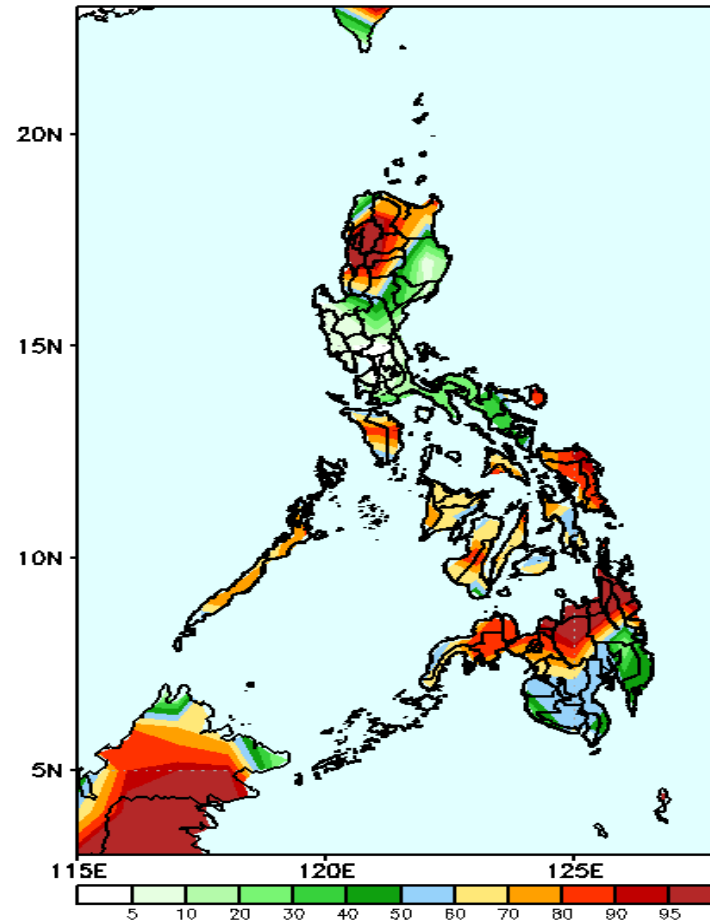
Week 1: April 27 – May 03, 2020

GEFS Week-1 Precip Anomaly
Valid: 20200427 – 20200503



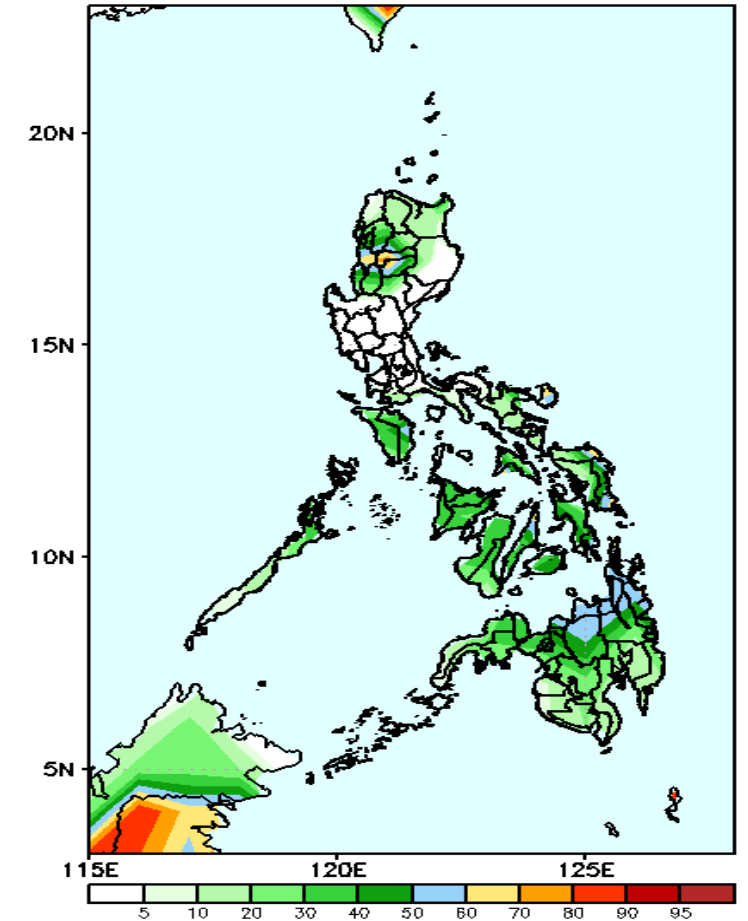
Rainfall deficit of 20-60 mm is likely in most parts of the country except in Cordillera Region where 60-90mm rainfall deficit is expected during the forecast period.

GEFS Week-1 Exceedance Prob. > 25mm
Valid: 20200427 – 20200503



High probability of rainfall to exceed 25mm in northwestern Luzon, Catanduanes, Mindoro, eastern Samar and northern part of Mindanao including Zamboanga Peninsula is expected while less likely for the rest of the country during the forecast period.

GEFS Week-1 Exceedance Prob. > 50mm
Valid: 20200427 – 20200503

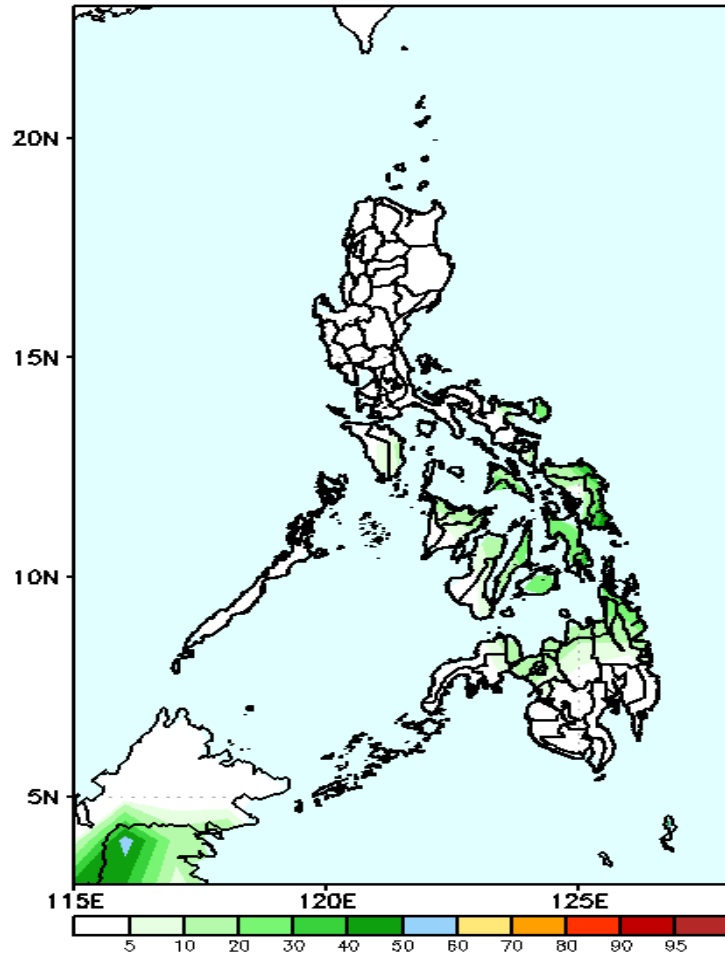


Less probability of rainfall to exceed 50mm in most parts of the country except in CAR where there is 50-70% probability during the forecast period.

Exceedance Probability > 100/150/200 mm

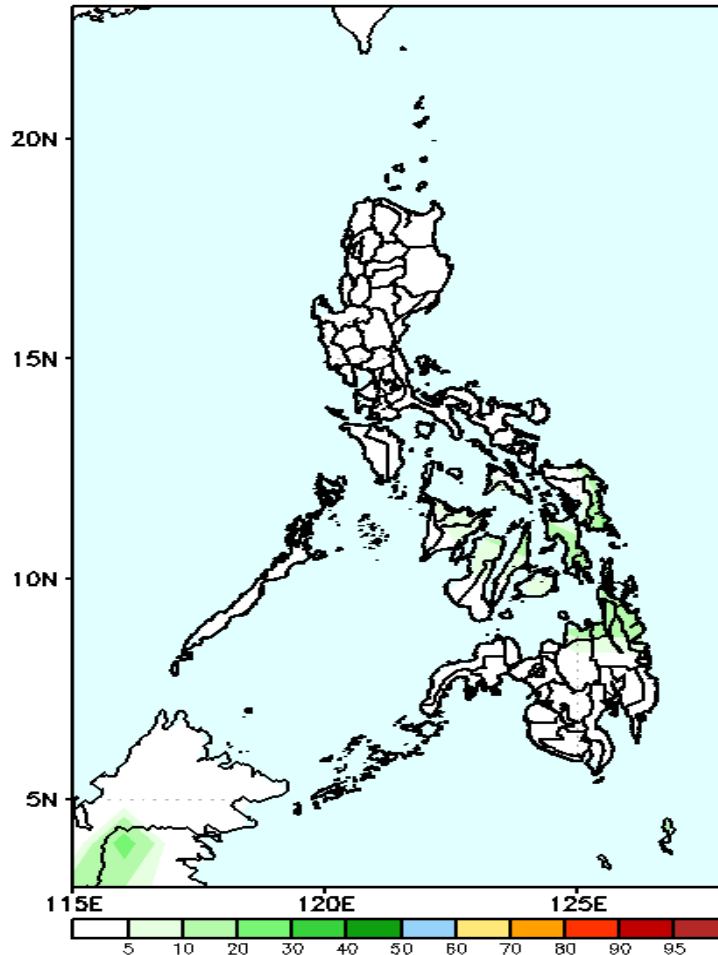
Week 1: April 27 – May 03, 2020

GEFS Week-1 Exceedance Prob. > 100mm
Valid: 20200427 – 20200503



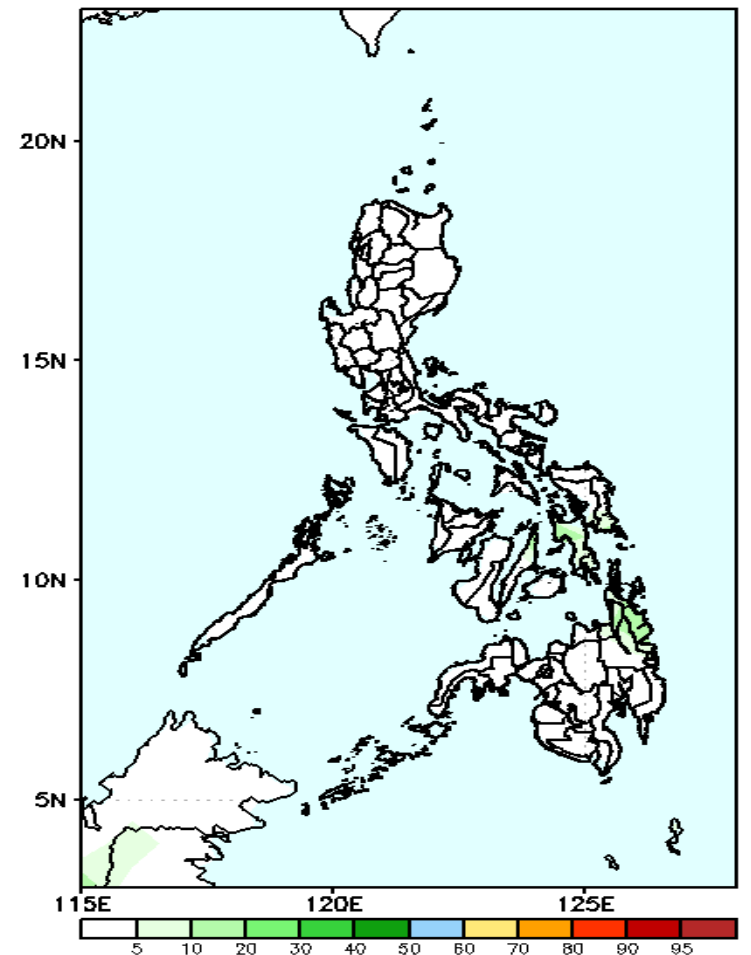
Less probability of rainfall to exceed 100mm in most parts of the country during the forecast period.

GEFS Week-1 Exceedance Prob. > 150mm
Valid: 20200427 – 20200503



Less probability of rainfall to exceed 150mm in most parts of the country during the forecast period.

GEFS Week-1 Exceedance Prob. > 200mm
Valid: 20200427 – 20200503

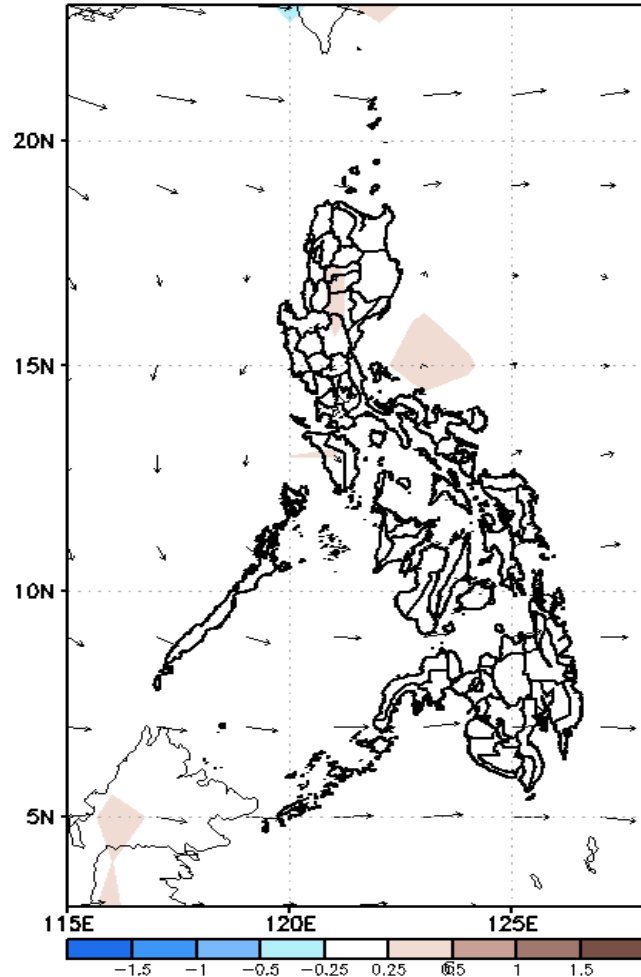


Less probability of rainfall to exceed 200mm in most parts of the country during the forecast period.

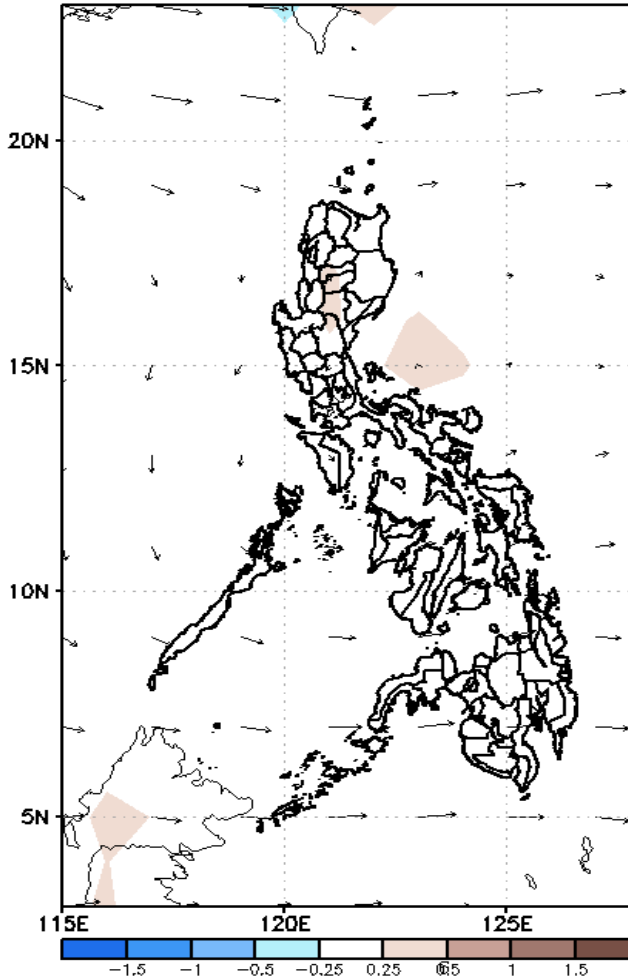
GEFS Week-2 Forecasts: Divergence & Wind Anomaly

Week 2: May 04-10, 2020

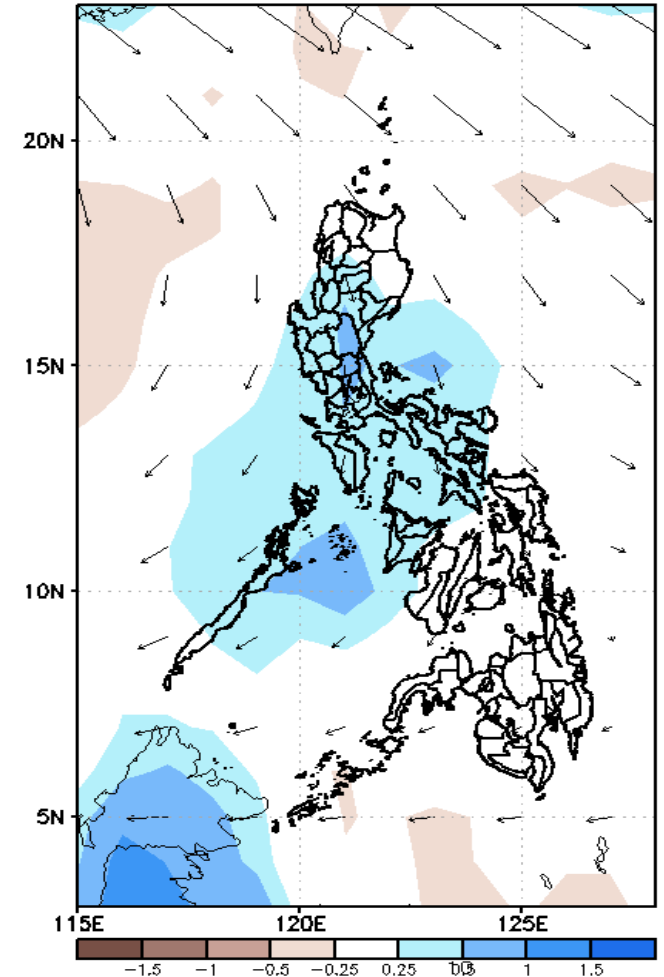
GEFS Week-2 850-hPa Divergence and Wind Anom
Valid: 20200504 - 20200510



GEFS Week-2 700-hPa Divergence and Wind Anom
Valid: 20200504 - 20200510



GEFS week-2 200-hPa Divergence and Wind Anom
Valid: 20200504 - 20200510

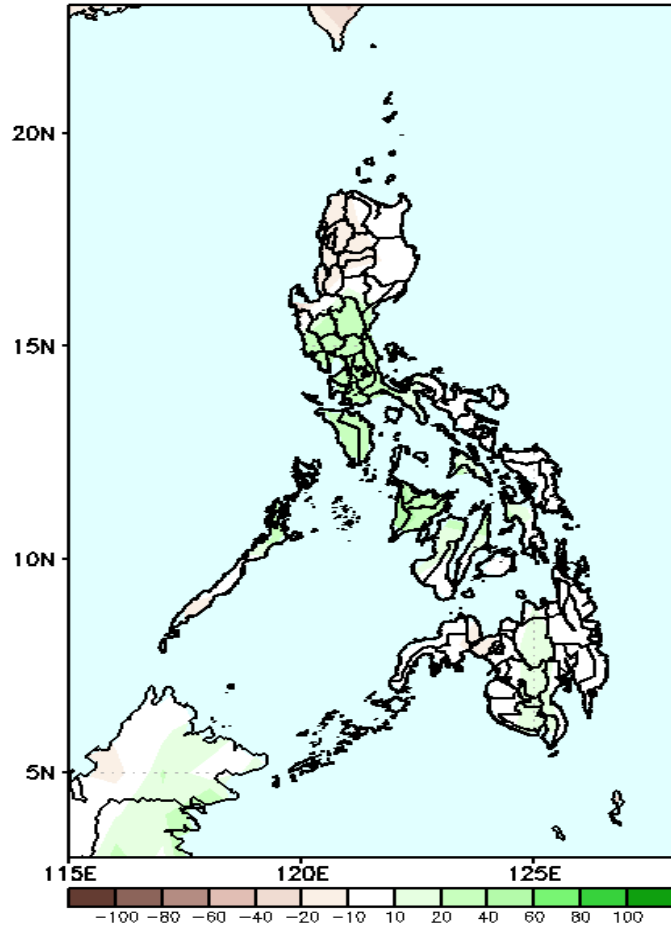


Upper level (750 hPa) Divergence suggest likelihood of precipitation in most parts of Luzon, eastern Visayas and most parts of Mindanao due to localize and widespread thunderstorm activity. Easterlies affecting most parts of the country while southwest surface windflow affecting southern Mindanao during the forecast period.

Precipitation Anomaly and Exceedance Probability > 25/50 mm

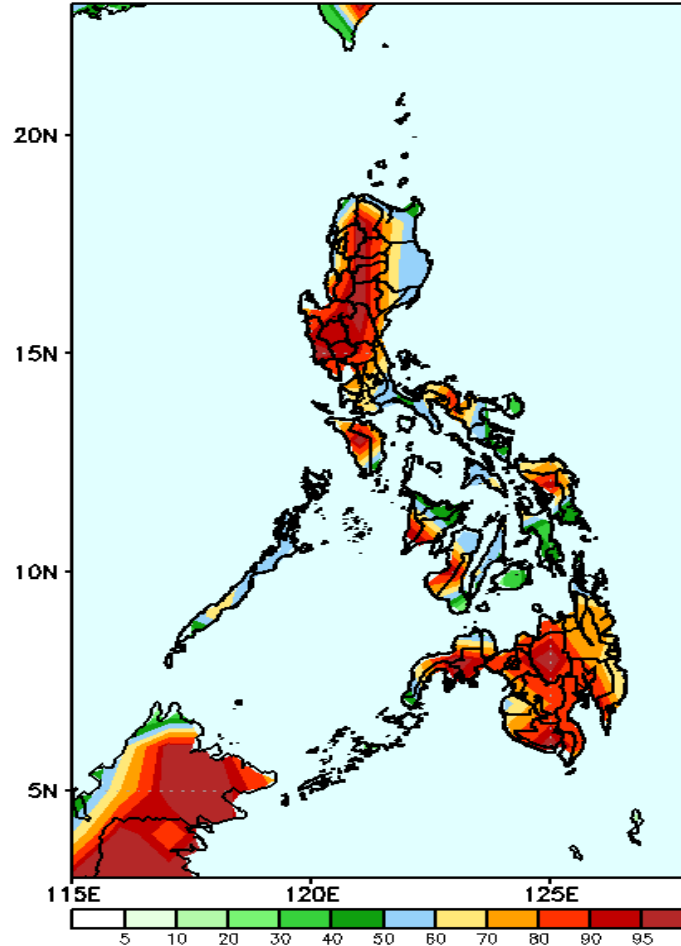
Week 2: May 04-10, 2020

GEFS Week-2 Precip Anomaly
Valid: 20200504 - 20200510



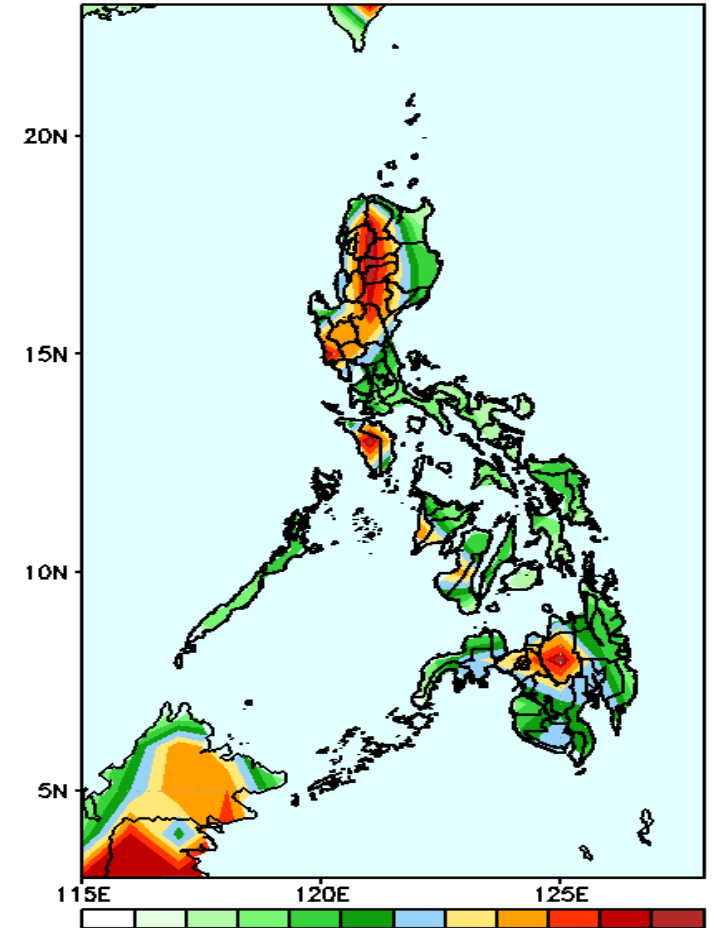
Central and Southern Luzon, Mindoro and Panay Island will likely to have rainfall of more than 40mm.

GEFS Week-2 Exceedance Prob. > 25mm
Valid: 20200504 - 20200510



High probability of rainfall to exceed 25mm in most parts of the country is expected except Cagayan Valley, Central Visayas and provinces of Leyte where there is 40-60% probability during the forecast period.

GEFS Week-2 Exceedance Prob. > 50mm
Valid: 20200504 - 20200510

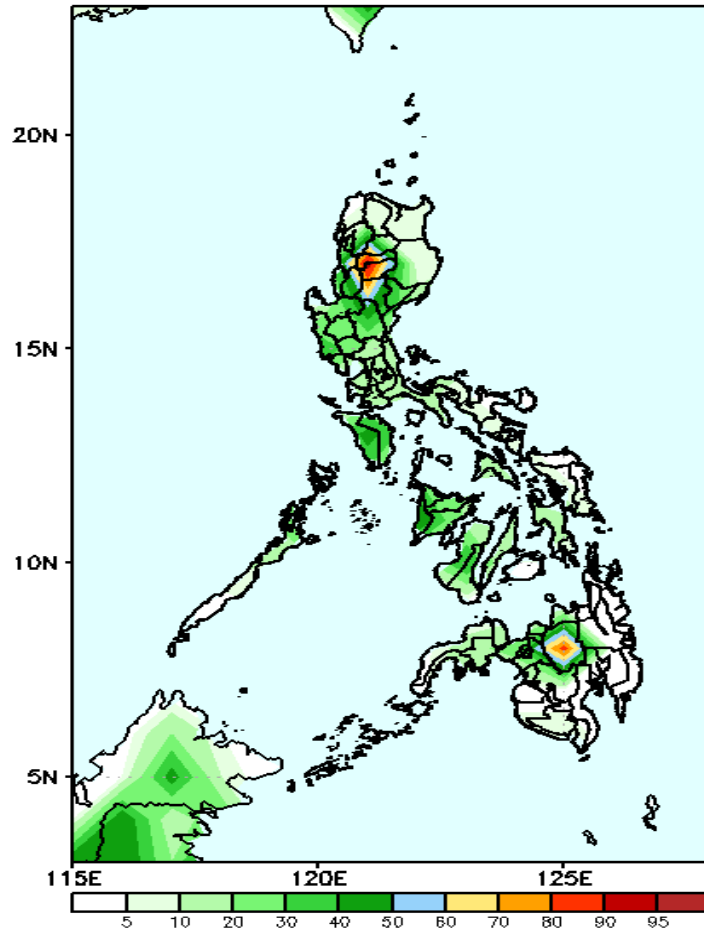


High probability of rainfall to exceed 25mm in western and central part of Luzon, Mindoro and Bukidnon is expected while the rest of the country will have 40-60% probability during the forecast period.

Exceedance Probability > 100/150/200 mm

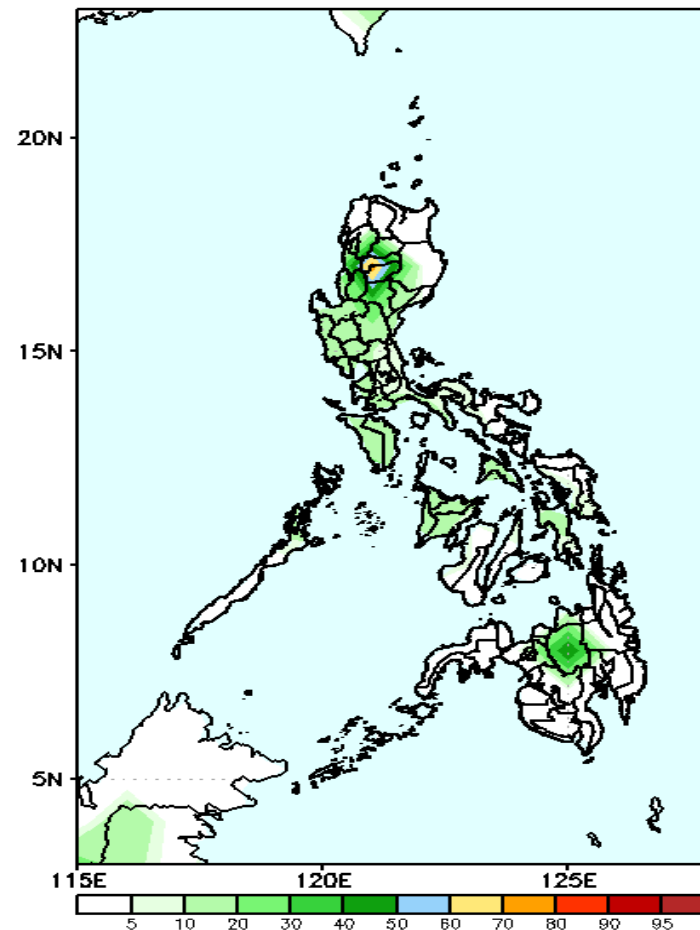
Week 2: May 04-10, 2020

GEFS Week-2 Exceedance Prob. > 100mm
Valid: 20200504 - 20200510



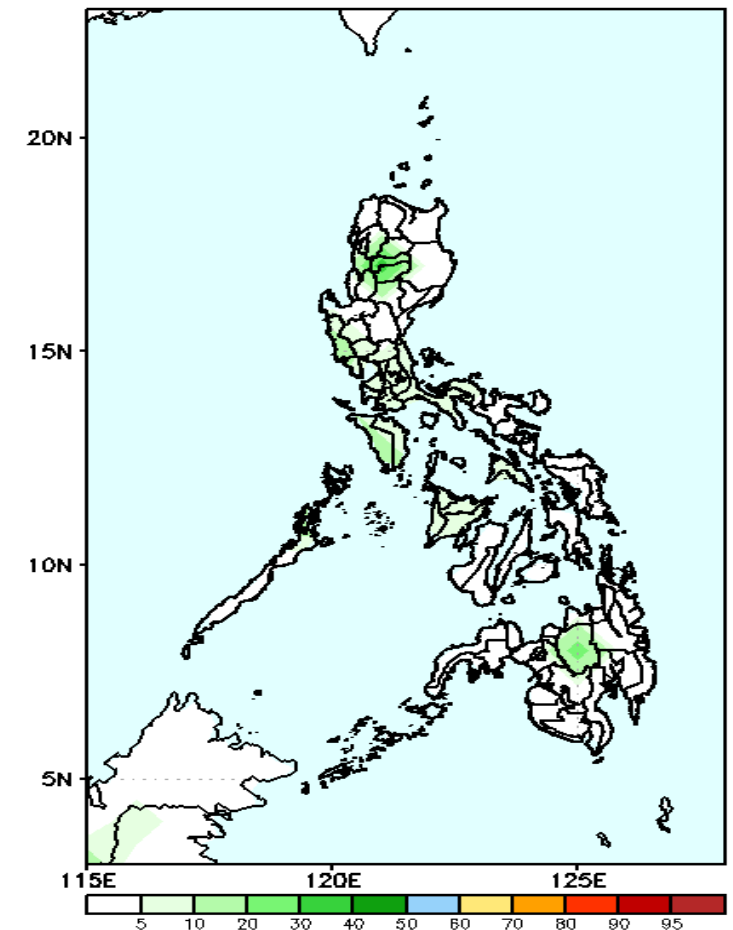
Less probability of rainfall to exceed 100mm in most parts of the country except in CAR and Bukidnon where there is 70-90% probability during the forecast period.

GEFS Week-2 Exceedance Prob. > 150mm
Valid: 20200504 - 20200510



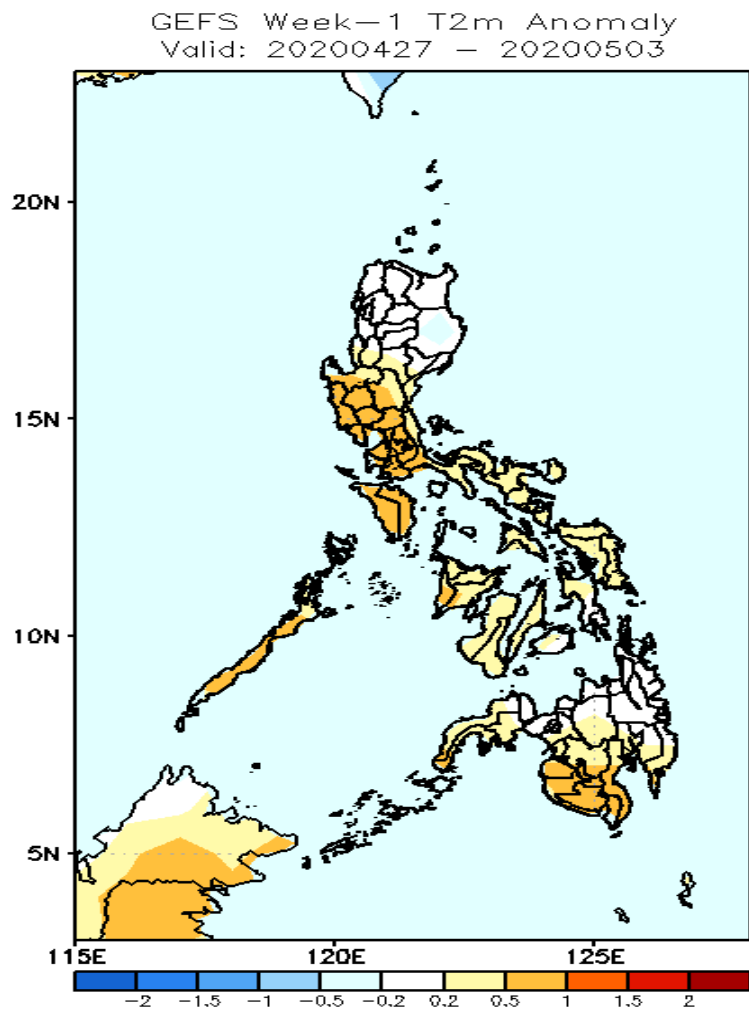
Less probability of rainfall to exceed 150 mm in most parts of the country except in CAR where there is 50-70% probability during the forecast period.

GEFS Week-2 Exceedance Prob. > 200mm
Valid: 20200504 - 20200510



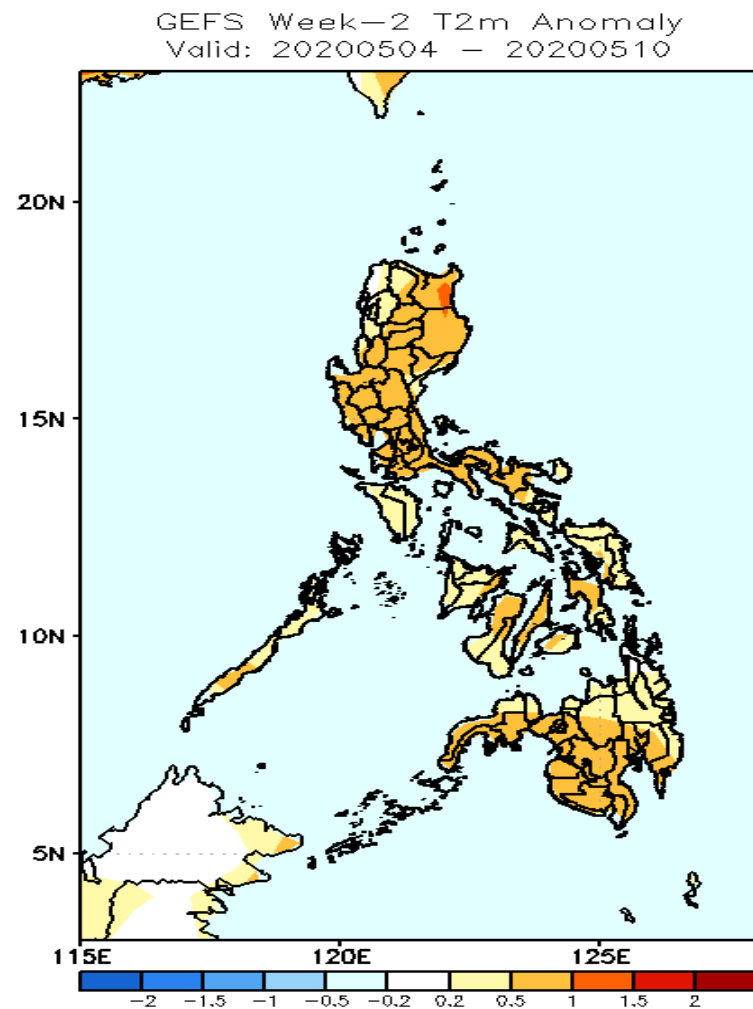
Less probability of rainfall to exceed 200 mm in most parts of the country during the forecast period.

GEFS Week-1 & 2 Forecasts: T2m Anomaly



2m Temperature Week 1: April 27 – May 03, 2020

Average to slightly warmer than average surface air temperature will likely experience in most parts of the country during the forecast period.



2m Temperature Week 2 May 04-10, 2020

Slightly warmer than average surface air temperature will likely experience in most parts of the country during the forecast period.