



Week 1 & Week 2 Forecast for the Philippines using GEFS Model



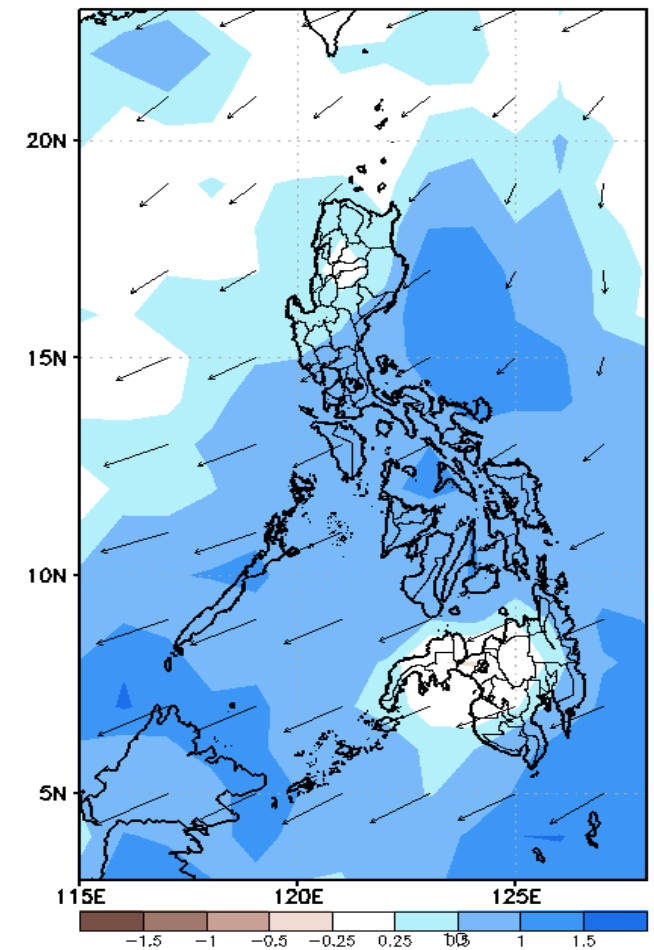
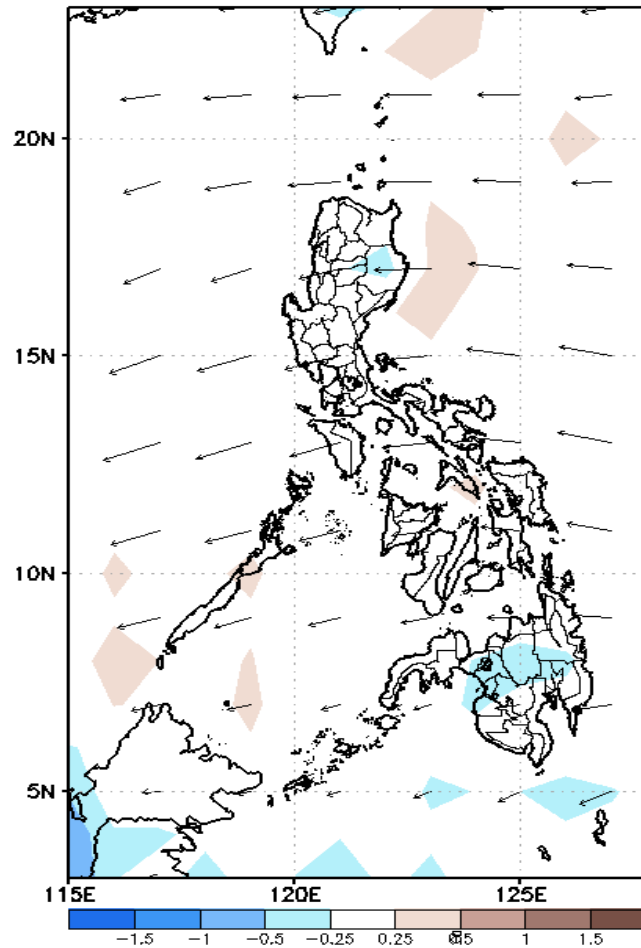
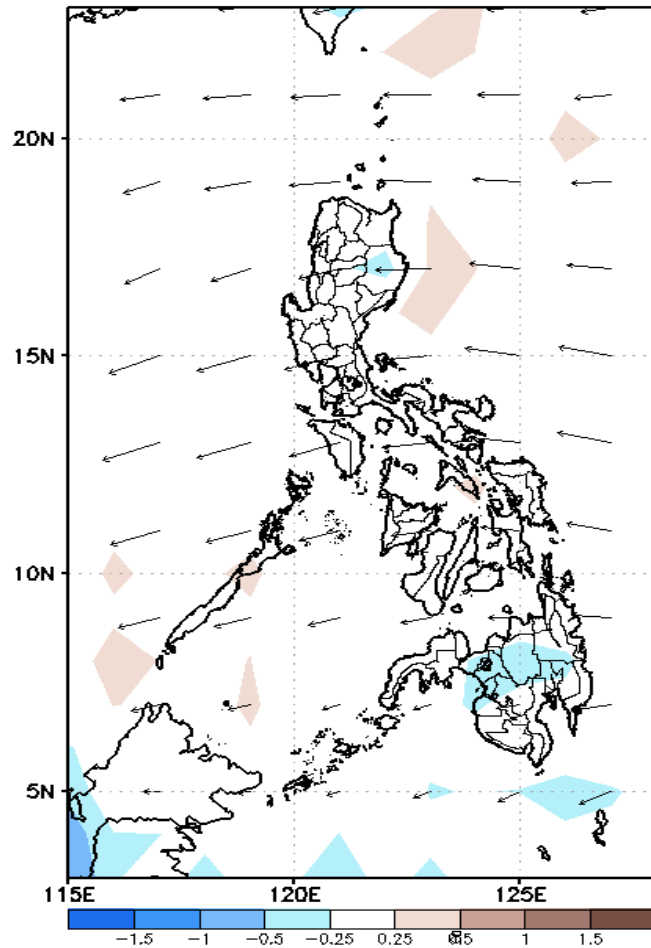
GEFS Week-1 Forecasts: Divergence & Wind Anomaly

Week 1: July 27-Aug 02, 2020

GEFS Week-1 850-hPa Divergence and Wind Anom
Valid: 20200727 - 20200802

GEFS Week-1 700-hPa Divergence and Wind Anom
Valid: 20200727 - 20200802

GEFS Week-1 200-hPa Divergence and Wind Anom
Valid: 20200727 - 20200802

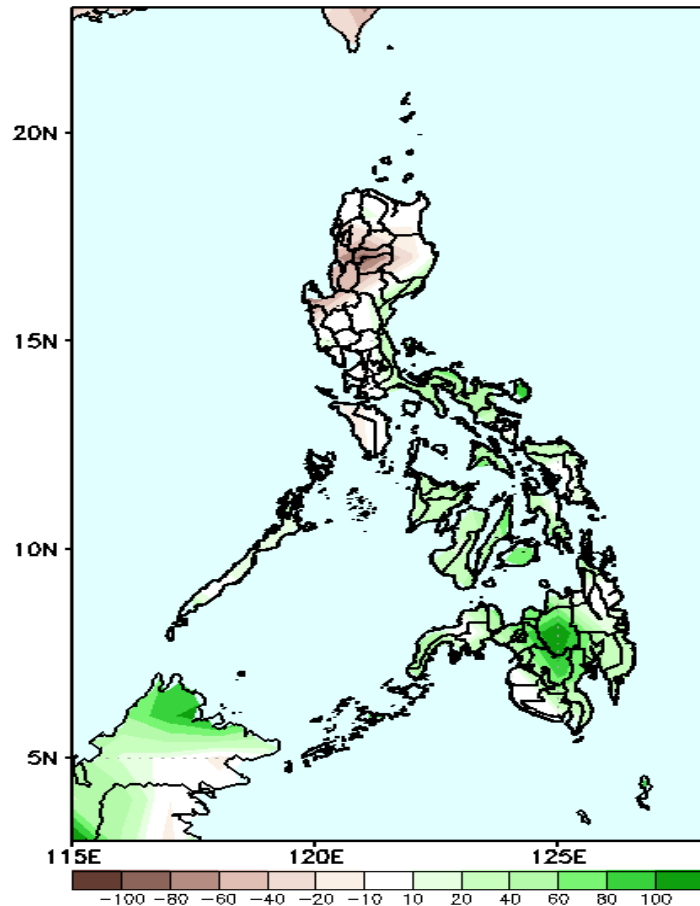


Upper level (200 hPa) Divergence suggest likelihood of precipitation in most parts of the country. Southwest monsoon affecting western Luzon and Visayas while easterlies affecting the remaining parts of the country during the forecast period.

Precipitation Anomaly and Exceedance Probability > 25/50 mm

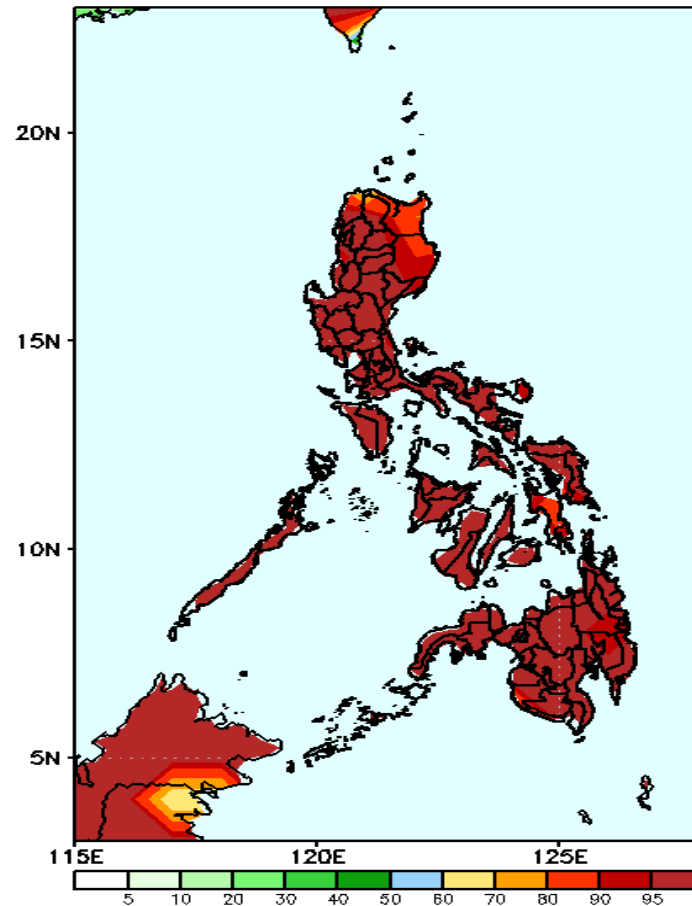
Week 1: July 27-Aug 02, 2020

GEFS Week-1 Precip Anomaly
Valid: 20200727 - 20200802



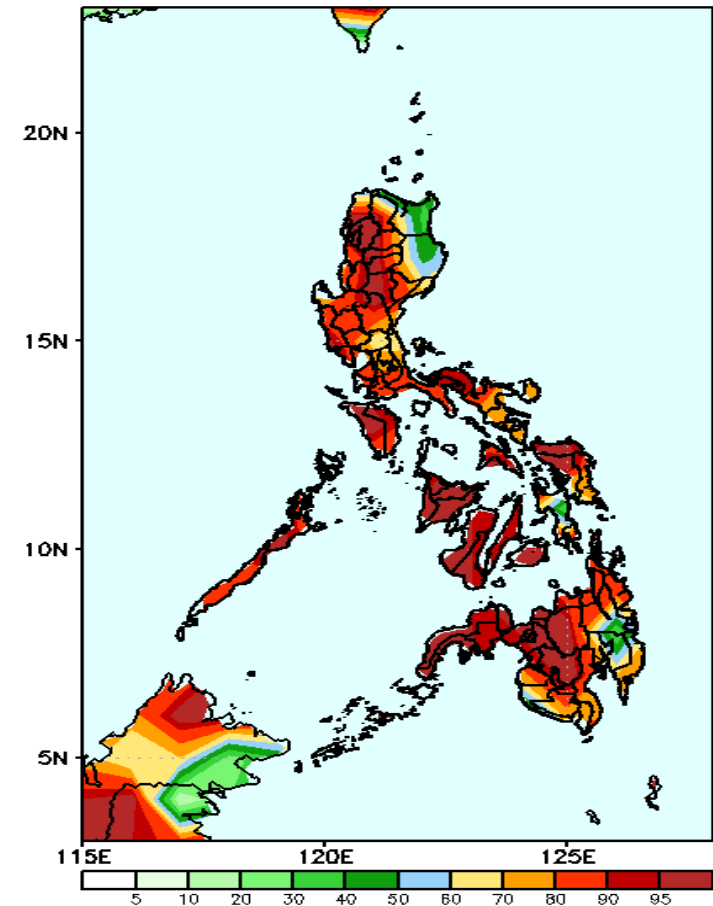
Rainfall deficit of 50-80mm in Mt. Province and Ifugao while increase of rainfall of up to 80mm in Northern Mindanao Lanao del Sur during the forecast period.

GEFS Week-1 Exceedance Prob. > 25mm
Valid: 20200727 - 20200802



High probability of rainfall to exceed 25mm in most parts the country is expected during the forecast period.

GEFS Week-1 Exceedance Prob. > 50mm
Valid: 20200727 - 20200802

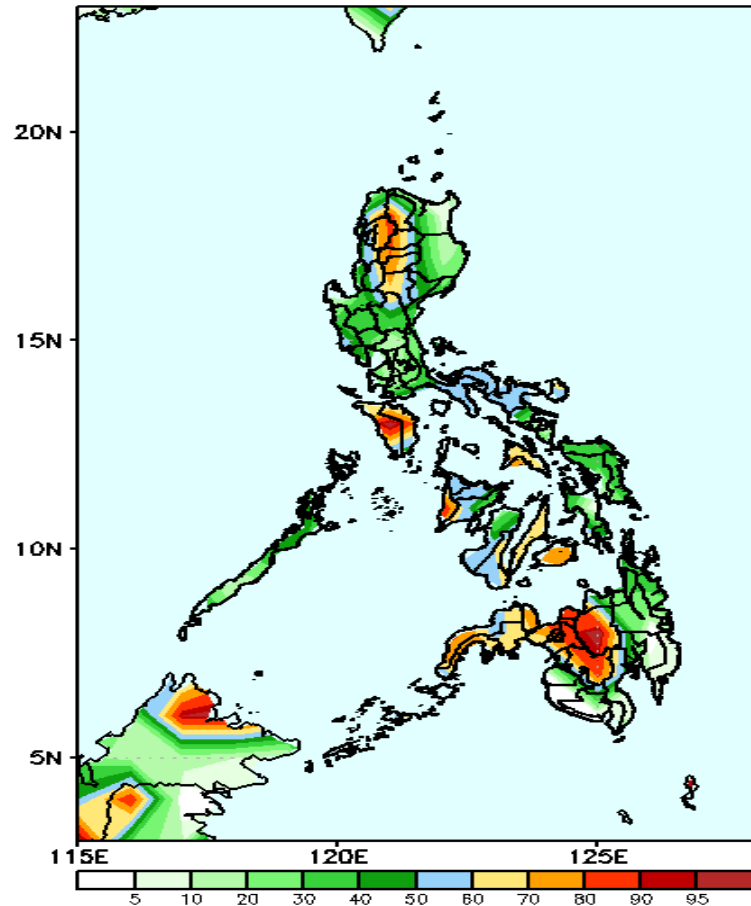


High probability of rainfall to exceed 50mm in most parts the country is expected except in northeastern parts of Luzon during the forecast period.

Exceedance Probability > 100/150/200 mm

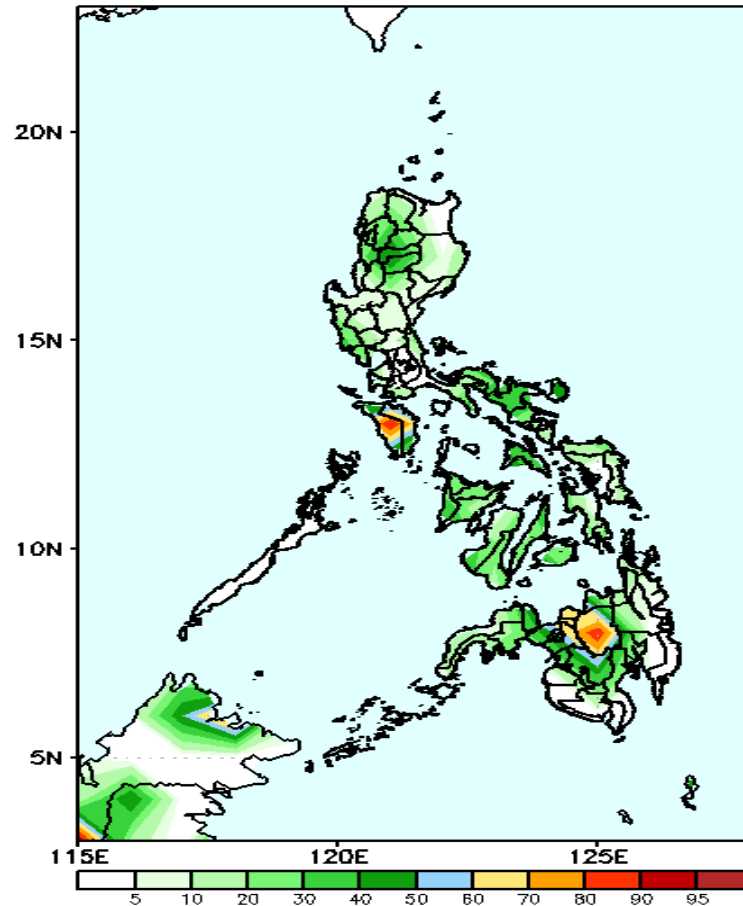
Week 1: July 27-Aug 02, 2020

GEFS Week-1 Exceedance Prob. > 100mm
Valid: 20200727 - 20200802



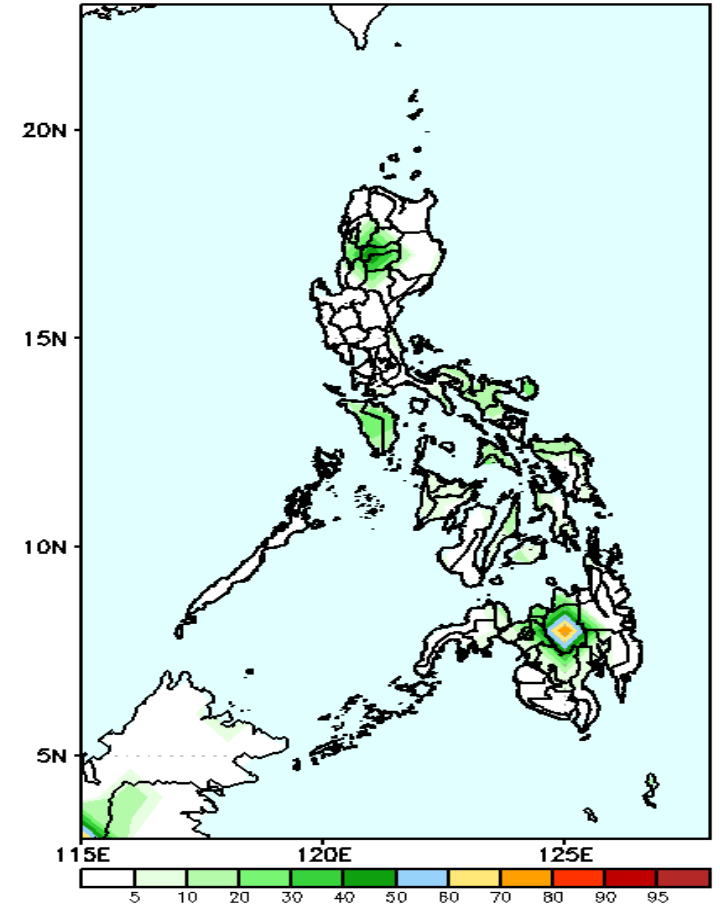
High probability of rainfall to exceed 100mm in Cordillera Region, Mindoro and in northwestern Mindanao while less likely for the rest of the country during the forecast period.

GEFS Week-1 Exceedance Prob. > 150mm
Valid: 20200727 - 20200802



50-90% probability of rainfall to exceed 150mm in Mindoro and Bukidnon while less likely for the rest of the country during the forecast period.

GEFS Week-1 Exceedance Prob. > 200mm
Valid: 20200727 - 20200802



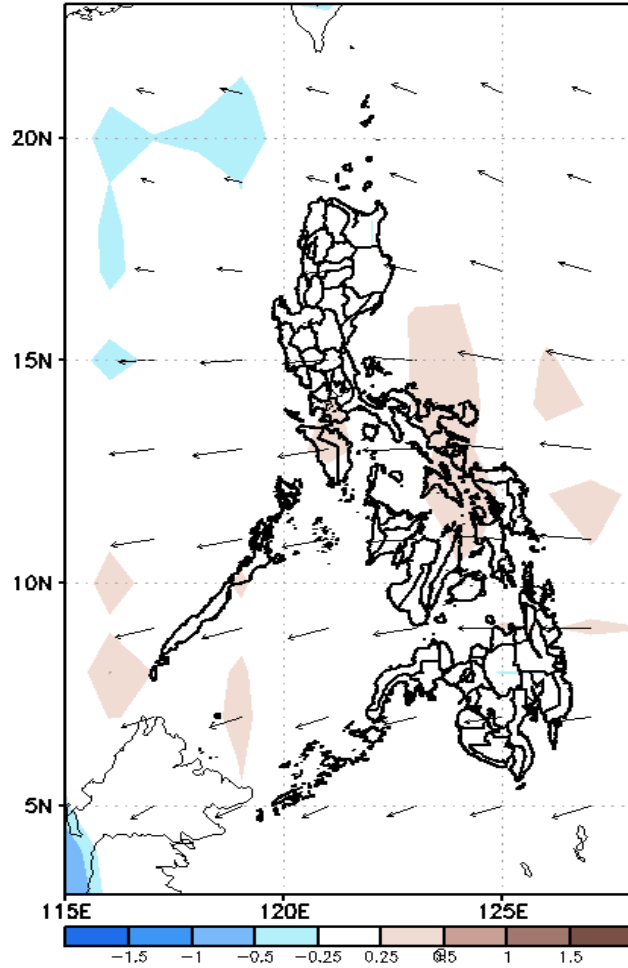
Less probability of rainfall to exceed 200mm in most parts of the country during the forecast period.



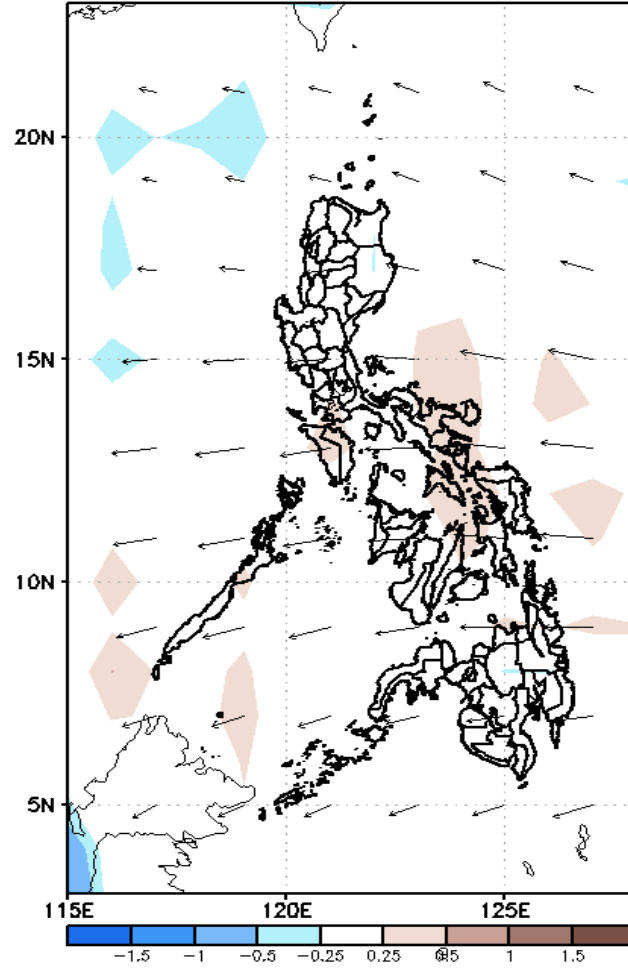
GEFS Week-2 Forecasts: Divergence & Wind Anomaly

Week 2: Aug 3-9, 2020

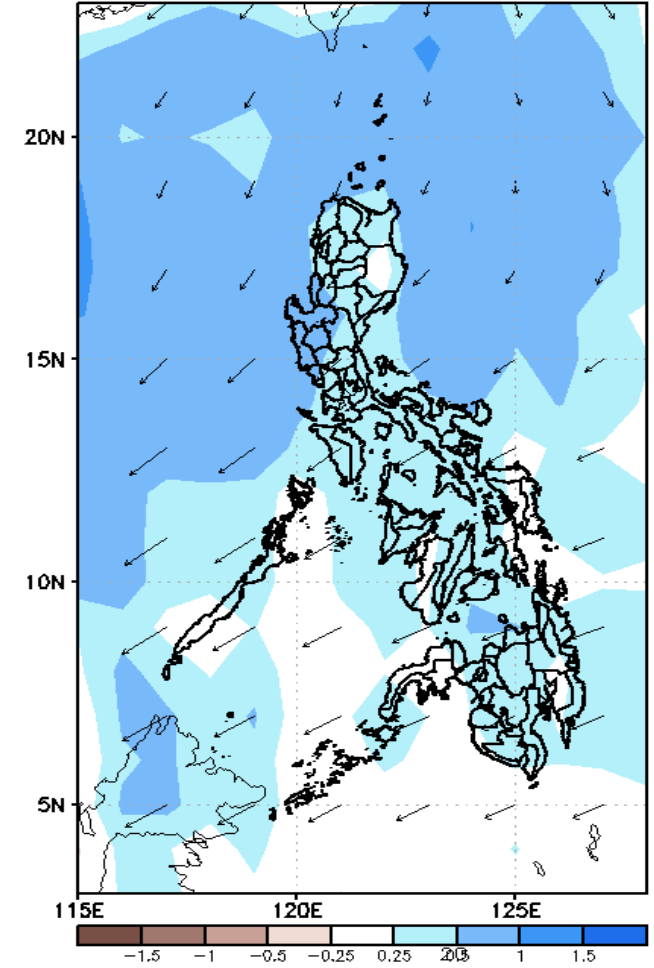
GEFS Week-2 850-hPa Divergence and Wind Anom
Valid: 20200803 – 20200809



GEFS Week-2 700-hPa Divergence and Wind Anom
Valid: 20200803 – 20200809



GEFS week-2 200-hPa Divergence and Wind Anom
Valid: 20200803 – 20200809

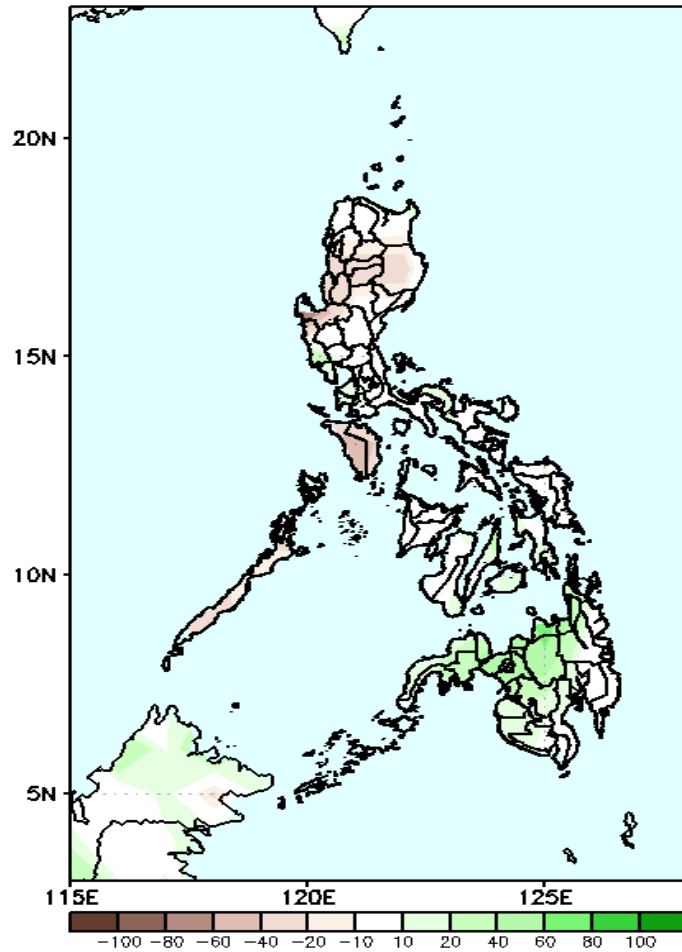


Upper level (200 hPa) Divergence suggest likelihood of precipitation in most parts of the country. Easterlies affecting most parts of the country during the forecast period.

Precipitation Anomaly and Exceedance Probability > 25/50 mm

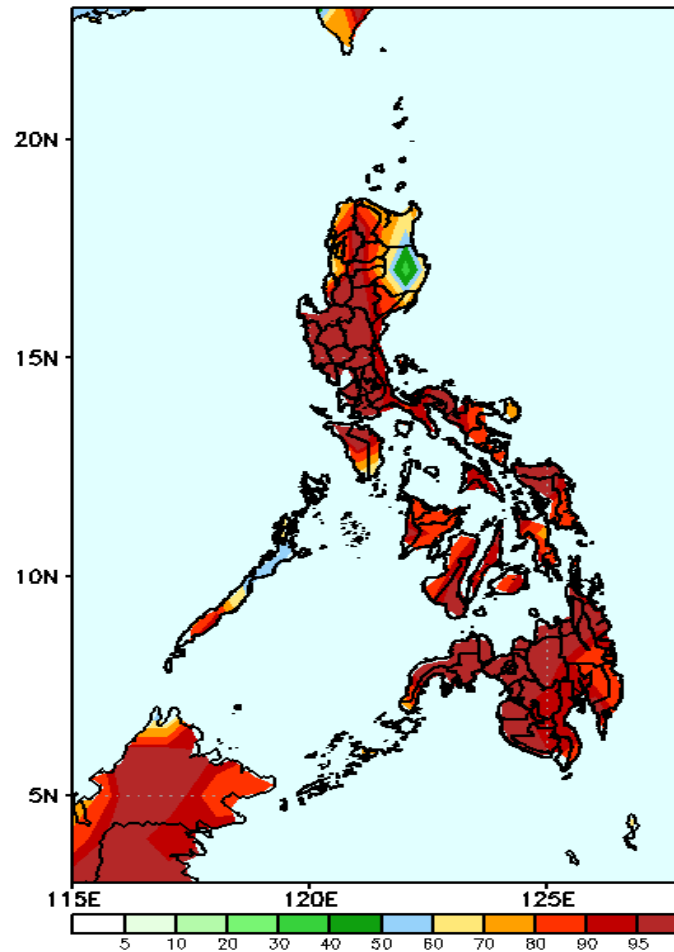
Week 2: Aug 3-9, 2020

GEFS Week-2 Precip Anomaly
Valid: 20200803 – 20200809



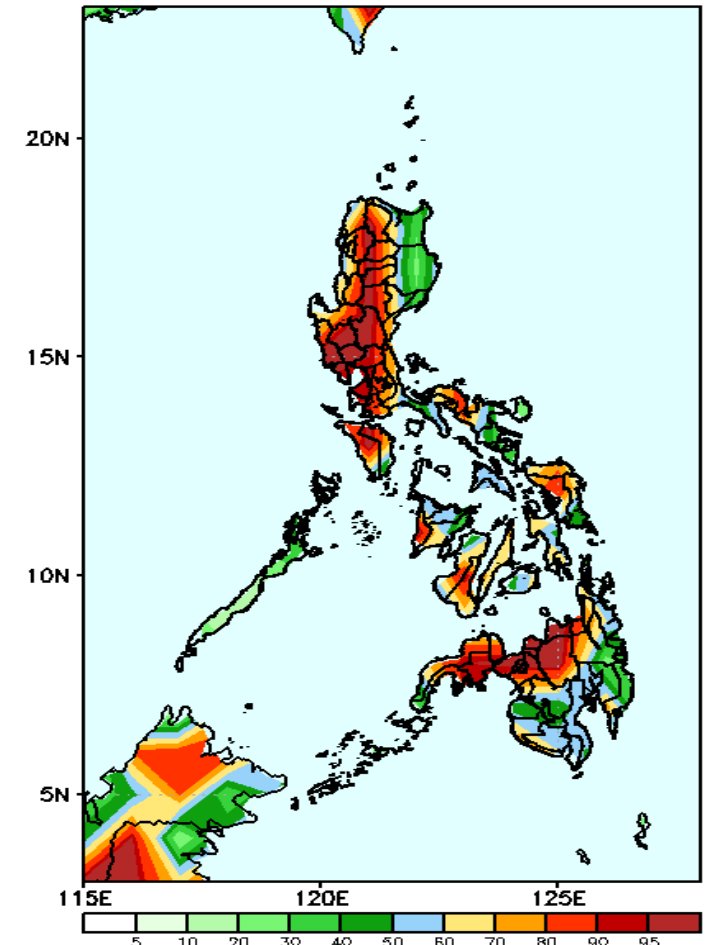
Rainfall deficit of 20-60mm is expected in most parts of Luzon while increase of up to 60mm in Northern Mindanao during the forecast period.

GEFS Week-2 Exceedance Prob. > 25mm
Valid: 20200803 – 20200809



High probability of rainfall to exceed 25mm in most parts of the country is expected except in Isabela during the forecast period.

GEFS Week-2 Exceedance Prob. > 50mm
Valid: 20200803 – 20200809

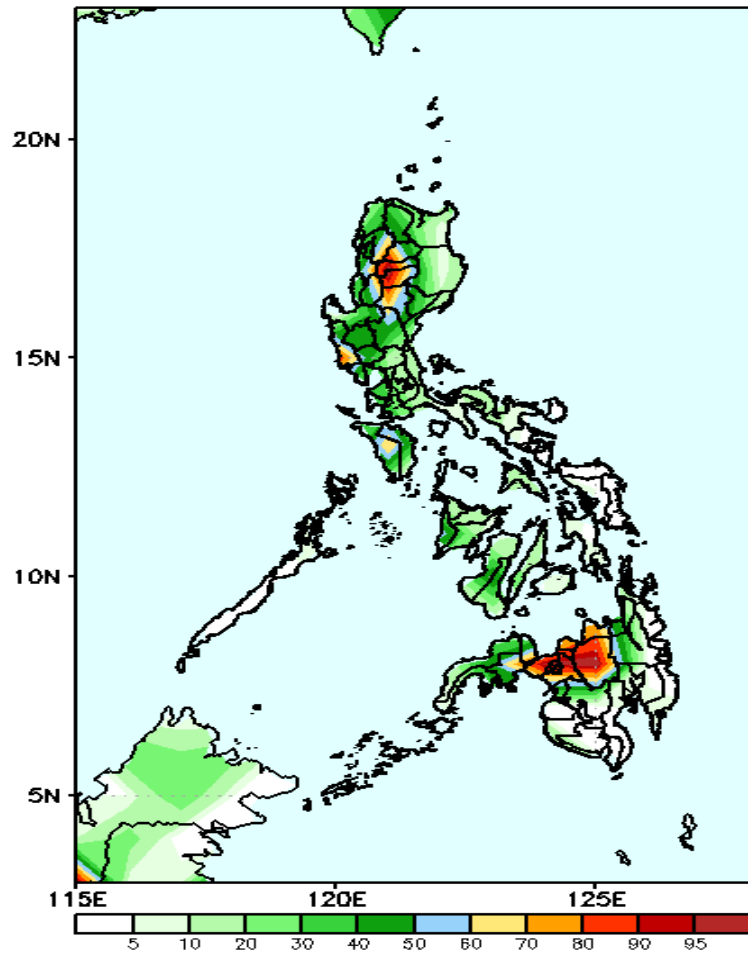


High probability of rainfall to exceed 50mm most parts of Luzon (except Cagayan and Isabela), in Samar provinces and western Visayas and in northern Mindanao and Zamboanga Peninsula while less likely for the rest of the country during the forecast period.

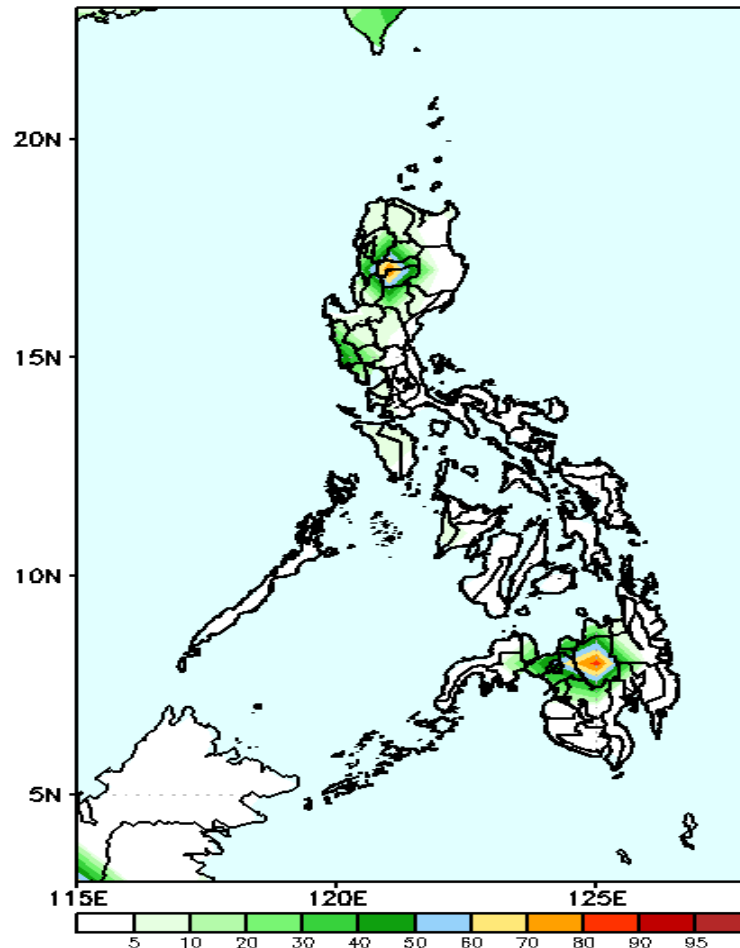
Exceedance Probability > 100/150/200 mm

Week 2: Aug 3-9, 2020

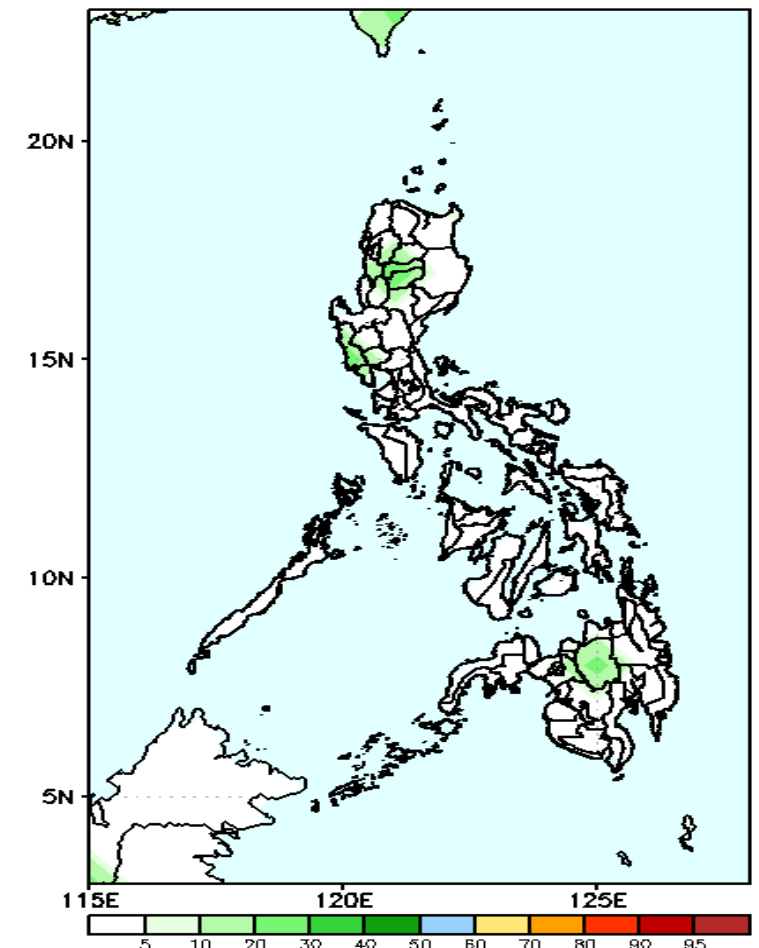
GEFS Week-2 Exceedance Prob. > 100mm
Valid: 20200803 – 20200809



GEFS Week-2 Exceedance Prob. > 150mm
Valid: 20200803 – 20200809



GEFS Week-2 Exceedance Prob. > 200mm
Valid: 20200803 – 20200809

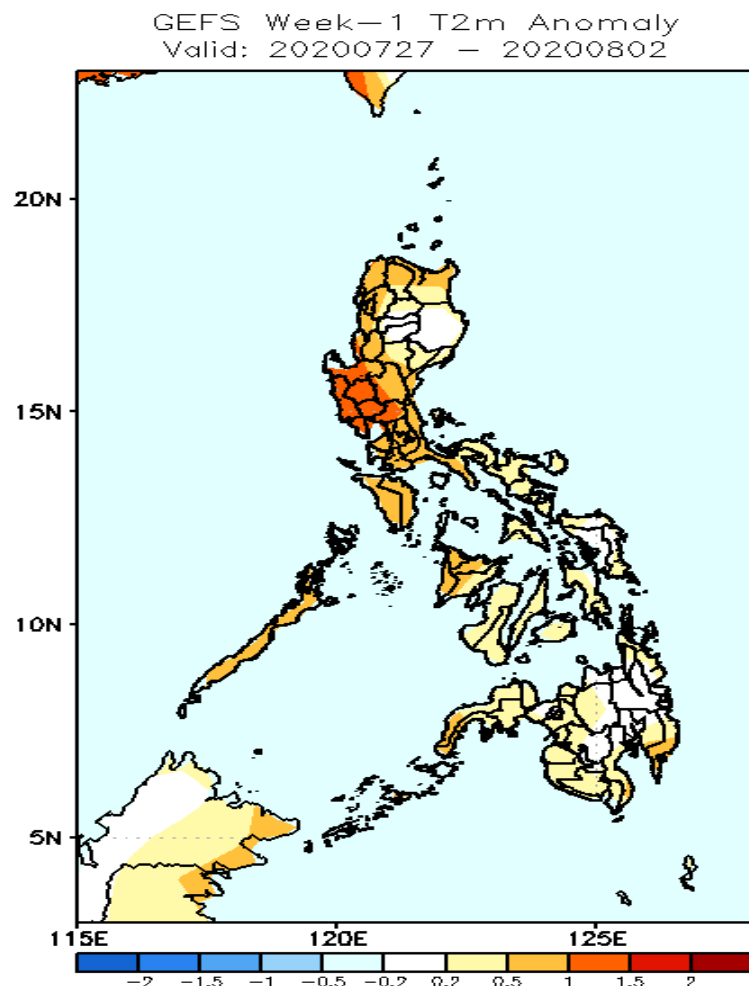


50-90% probability of rainfall to exceed 100mm in Cordillera Region, Zambales and Northern Mindanao while less likely for the rest of the country during the forecast period.

50-80% probability of rainfall to exceed 150mm in Mt. Province, Ifugao and Bukidnon while less likely for the rest of the country during the forecast period.

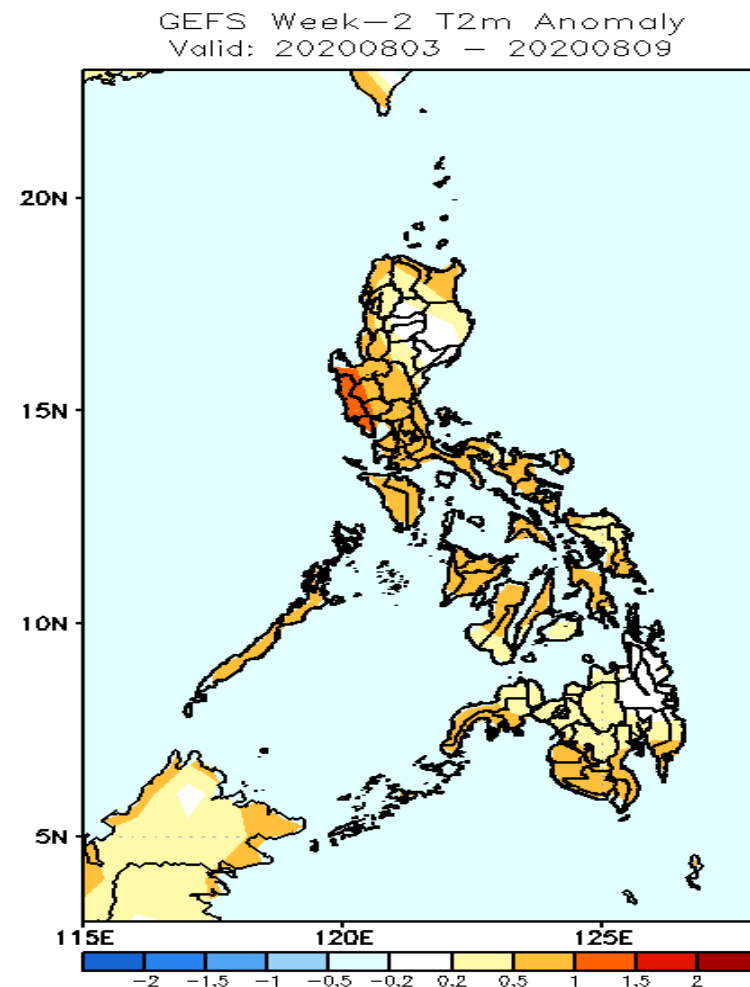
Less probability of rainfall to exceed 200mm in most parts of the country during the forecast period.

GEFS Week-1 & 2 Forecasts: T2m Anomaly



2m Temperature Week 1: July 27-Aug 02, 2020

Slightly warmer to warmer than average surface air temperature will likely experience in most parts of Luzon while average to slightly warmer than average temperature in Visayas and Mindanao is expected during the forecast period.



2m Temperature Week 2: Aug 3-9, 2020

Average to slightly warmer than average surface air temperature will likely experience in most parts of the country is expected except in Bataan and Zambales where warmer temperature is expected during the forecast period.